

BRIAN SANDOVAL  
Governor

STATE OF NEVADA



JULIE KOTCHEVAR, Ph.D.  
Administrator, DPBH

RICHARD WHITLEY, MS  
Director, DHHS

IHSAN AZZAM Ph.D, M.D.  
Chief Medical Officer


**DEPARTMENT OF HEALTH AND HUMAN SERVICES  
DIVISION OF PUBLIC AND BEHAVIORAL HEALTH**

**Bureau of Health Protection and Preparedness**  
Radiation Control Program  
675 Fairview Drive, Suite 218  
Carson City, Nevada 89701  
Telephone: (775) 687-7550 · Fax: (775) 687-7552

August 20, 2018

MEMORANDUM

To: Beatty File

From: John Follette, Radiation Control Specialist 

Subject: Beatty Inspection Summary August 17, 2018

---

An inspection of the Beatty Low-Level Waste landfill (closed) was conducted on August 17, 2018 by Haley Brown and John Follette. The radiological survey was performed by driving the BNC Model RD-120 GN (SN 120009) backpack around the site boundary access road and in a grid pattern across the cap to detect radiological anomalies. None were detected. Dose rate readings on the cap remain about twice background\*, as read on the access road.

**Status of Previous Inspection Items:**

The markers for the trenches are not in place on the cap. They are still stacked off to the side of the cap, inside of the fenced area.

**Radiological Postings Adequate:**

All of the postings along the fence are adequate. However, we may want to add additional radiological postings to the new gate.

**Site Observations:**

**Radiological Postings Adequate:**

All of the postings along the fence are adequate. However, we may want to add additional radiological postings to the new gate.

Site Boundary Fence Undamaged and Gate(s) Locked: Yes

Site Boundary, Access Road, and Buffer Areas Maintained: Yes

**Rain Since Last Inspection:**

May - 0.14", June - 0.0", July - 0.58", and August - 0.0.0" as of August 16, 2018.

Erosion, Fissures, Water Pooling, or Subsidence Concerns:

There are erosion areas along the South fence. Pictures of the erosion were taken starting about 5 feet from the southeast corner heading west to the gate. The erosion seems to be limited to the area that includes the rock that wraps the site and the berm to the road around the site. No erosion was identified above the rocks or on the cap. See attached pictures.

### **Radiation Survey Results:**

Instrument: BNC Model RD-120 GN (SN 120009) Calibration date: Daily by self-calibration

Background Location: Between US 95 and the site, at the south-east side of the site entrance gate.

Background measurement: 16-20 urem/hr

Value used for twice background: 40 urem/hr

Site Boundary Highest Measurement: Within twice background\*

Cap Highest Measurement: Within twice background\*

\*If sustained radiation measurements are above twice background, record the measurement and identify the location. Otherwise, indicate all measurements were within twice background.

For any reading above 0.5 mrem/hr contact a supervisor or the State of Nevada Radiation Control Program Manager. (Site Stabilization and Closure Plan Closure Plan for Low-Level Radioactive Waste Management Facility US Ecology, Inc. Beatty, Nevada, submittal date December 1988.)

Contacts:	Karen Beckley:	775-687-7540, <a href="mailto:kbeckley@health.nv.gov">kbeckley@health.nv.gov</a>
	Adrian Howe:	775-687-7531, <a href="mailto:ahowe@health.nv.gov">ahowe@health.nv.gov</a>
	Glen Gimenez:	775-687-7542, <a href="mailto:glgimenez@health.nv.gov">glgimenez@health.nv.gov</a>
	John Follette:	702-486-3017, <a href="mailto:jfollette@health.nv.gov">jfollette@health.nv.gov</a>
	Brandie Peretz:	702-486-5286, <a href="mailto:bperetz@health.nv.gov">bperetz@health.nv.gov</a>
	Haley Brown:	702-486-3015, <a href="mailto:habrown@health.nv.gov">habrown@health.nv.gov</a>

## Station Summary

### Beatty 11SSE US Ecology Nevada Monthly Summary for

May, 2018

Day of Month	Day of Year	Total Solar Rad. ly.	Wind		Air Temperature			Humidity			Dew Point Deg. Fahrenheit	Wet Bulb Deg. Fahrenheit	Total Precip inches	
			Ave mph	V. Dir. Deg	Max mph	Mean	Max	Min	Mea n	Ma x				Mi n
<a href="#">1</a>	121	319	8.4	135	27.6	56	67	47	52	90	17	36	46	0.06
<a href="#">2</a>	122	539	6.9	150	22.4	57	69	48	61	93	34	42	49	0.05
<a href="#">3</a>	123	701	6.6	223	28.7	66	81	46	33	69	12	31	48	0.00
<a href="#">4</a>	124	692	5.5	239	20.6	72	87	52	20	39	10	26	49	0.00
<a href="#">5</a>	125	602	5.2	231	25.2	76	91	56	15	30	7	23	50	0.00
<a href="#">6</a>	126	525	10.0	178	32.5	79	95	62	11	20	4	18	50	0.00
<a href="#">7</a>	127	722	5.8	260	17.1	80	95	61	8	17	2	10	49	0.00
<a href="#">8</a>	128	707	5.7	240	22.7	82	99	59	7	11	4	10	49	0.00
<a href="#">9</a>	129	703	8.6	229	32.5	85	101	67	9	14	5	20	52	0.00
<a href="#">10</a>	130	671	11.0	288	32.6	83	94	73	12	19	8	24	53	0.00
<a href="#">11</a>	131	671	16.4	36	53.5	73	89	61	18	28	11	26	49	0.00
<a href="#">12</a>	132	695	11.9	316	33.7	66	79	53	21	36	9	23	46	0.00
<a href="#">13</a>	133	681	10.6	290	39.9	70	82	57	27	43	14	33	50	0.00
<a href="#">14</a>	134	592	12.2	331	38.8	70	82	62	32	45	19	38	52	0.00
<a href="#">15</a>	135	694	6.3	168	28.3	73	87	56	26	53	9	33	52	0.00
<a href="#">16</a>	136	735	12.9	195	35.4	74	88	53	12	31	5	16	47	0.00
<a href="#">17</a>	137	729	12.8	290	30.0	71	83	59	18	32	9	23	48	0.00
<a href="#">18</a>	138	696	11.0	304	28.1	77	90	63	22	33	15	34	53	0.00
<a href="#">19</a>	139	615	8.5	208	43.8	77	90	64	24	41	10	36	54	0.00
<a href="#">20</a>	140	635	7.9	171	37.3	76	90	58	26	52	12	35	53	0.00
<a href="#">21</a>	141	478	12.9	97	34.1	72	82	64	29	53	15	36	52	0.03
<a href="#">22</a>	142	538	4.3	162	16.3	73	85	62	30	52	16	37	53	0.00
<a href="#">23</a>	143	659	9.8	170	26.5	76	91	58	24	43	13	34	53	0.00
<a href="#">24</a>	144	727	12.7	142	33.1	78	89	59	19	36	11	31	53	0.00
<a href="#">25</a>	145	737	16.7	154	45.5	73	84	62	18	31	11	26	49	0.00
<a href="#">26</a>	146	675	13.2	128	37.9	68	83	56	33	70	17	36	50	0.00
<a href="#">27</a>	147	605	14.7	322	32.5	72	83	58	31	70	15	38	53	0.00
<a href="#">28</a>	148	706	15.1	337	33.9	79	90	66	24	38	13	38	55	0.00

<a href="#">29</a>	149	736	5.1	172	19.5	83	97	65	18	30	9	34	55	0.00
<a href="#">30</a>	150	709	14.8	181	35.8	84	97	65	17	29	8	32	55	0.00
<a href="#">31</a>	151	702	14.8	154	31.1	77	89	67	19	40	6	27	52	0.00

MONTHLY STATISTICS

	Total	Wind			Air Temperature			Humidity			Dew	Wet	Total
	Solar Rad.	Ave .	V. Dir.	Max .	Mean	Max	Min	Mea n	Ma x	Mi n	Point	Bulb	Precip .
	ly.	mph	Deg	mph	Deg. Fahrenheit			Percent			Deg. Fahrenheit		inches
Total	20196												0.14
Ave.	651	10.3	209	31.5	74.0	87.3	59.3	23	42	11	29	51	
Max.	737	16.7		53.5	85	101	73	61	93	34	42	55	0.06
Min.	319	4.3		16.3	56	67	46	7	11	2	10	46	0.00

Data are subject to further review and editing. Please refer any questions to the Western Regional Climate Center.

$$^{\circ} 1 \text{ ly} = 1 \text{ cal/cm}^2 = 4.1855 \text{ J/cm}^2 = 3.6855 \text{ BTU/ft}^2 = .01163 \text{ KW-hr/m}^2$$

## Station Summary

### Beatty 11SSE US Ecology Nevada

Monthly Summary for

**June, 2018**

Day of Month	Day of Year	Total Solar Rad. ly.	Wind		Air Temperature			Humidity			Dew Point	Wet Bulb	Total Precip inches	
			Ave Dir. mph	V. Dir. mph	Max Dir. mph	Mea n Deg. Fahrenheit	Max Dir. Deg. Fahrenheit	Min Dir. Deg. Fahrenheit	Mea n Percent	Ma x Percent				Mi n Percent
<u>1</u>	152	758	12.2	331	31.8	78	91	54	12	26	4	16	49	0.00
<u>2</u>	153	754	8.4	278	27.0	84	99	67	9	14	5	18	52	0.00
<u>3</u>	154	761	5.6	202	24.5	87	102	65	8	14	4	16	53	0.00
<u>4</u>	155				25.0		99	67		13	5			
<u>5</u>	156	744	10.7	162	28.8	87	100	75	13	22	6	29	55	0.00
<u>6</u>	157	753	15.3	152	35.6	84	96	74	13	24	4	24	53	0.00
<u>7</u>	158	732	9.2	145	22.2	82	95	70	14	25	7	26	53	0.00
<u>8</u>	159	748	7.0	180	21.7	84	98	63	10	18	6	20	52	0.00
<u>9</u>	160	744	13.8	154	35.7	84	101	64	12	21	5	25	53	0.00
<u>10</u>	161	750	13.5	319	35.8	79	94	68	9	22	4	13	49	0.00
<u>11</u>	162	755	6.6	216	22.9	86	100	68	9	16	5	19	52	0.00
<u>12</u>	163	751	5.3	197	19.7	89	104	67	9	15	6	22	54	0.00
<u>13</u>	164	742	9.0	190	27.4	90	105	69	10	18	4	23	55	0.00
<u>14</u>	165	754	10.8	154	24.3	89	103	72	13	23	7	31	57	0.00
<u>15</u>	166	713	13.2	148	29.1	86	99	77	13	22	5	28	55	0.00
<u>16</u>	167	750	14.0	150	36.7	82	97	72	14	25	5	27	53	0.00
<u>17</u>	168	753	13.8	160	30.2	75	89	64	20	34	9	30	51	0.00
<u>18</u>	169	748	7.0	273	23.4	78	91	63	18	31	6	29	52	0.00
<u>19</u>	170	750	11.3	288	27.7	85	98	73	14	21	9	30	55	0.00
<u>20</u>	171	758	6.0	171	22.3	91	107	72	11	19	6	27	56	0.00
<u>21</u>	172	769	8.8	243	42.2	93	110	71	8	17	3	19	56	0.00
<u>22</u>	173	776	12.7	291	27.9	94	109	76	5	9	3	12	55	0.00
<u>23</u>	174	766	6.6	219	25.1	93	109	73	6	8	4	14	55	0.00
<u>24</u>	175	751	9.3	301	28.8	94	106	82	8	11	5	22	56	0.00
<u>25</u>	176	737	7.6	176	24.4	93	107	71	11	18	5	29	58	0.00
<u>26</u>	177	751	8.6	167	24.2	93	108	73	10	19	5	28	57	0.00
<u>27</u>	178	752	11.4	155	33.5	91	105	72	11	20	5	27	56	0.00

<a href="#">28</a>	179	755	12.4	139	27.1	89	104	77	10	18	4	23	55	0.00
<a href="#">29</a>	180	739	7.7	167	22.9	87	100	68	12	18	7	27	55	0.00
<a href="#">30</a>	181	741	12.0	318	29.2	90	102	77	10	14	7	26	56	0.00

MONTHLY STATISTICS

	Total	Wind			Air Temperature			Humidity			Dew	Wet	Total
	Solar Rad.	Ave	V. Dir.	Max	Mea n	Max	Min	Mea n	Ma x	Mi n	Point	Bulb	Precip
	ly.	mph	Deg	mph	Deg. Fahrenheit			Percent			Deg. Fahrenheit		inches
Total	21754												0.00
Ave.	750	10.0	187	27.9	86.9	101.0	70.1	11	19	5	23	54	
Max.	776	15.3		42.2	94	110	82	20	34	9	31	58	0.00
Min.	713	5.3		19.7	75	89	54	5	8	3	12	49	0.00

Data are subject to further review and editing. Please refer any questions to the Western Regional Climate Center.

° 1 ly = 1 cal/cm<sup>2</sup> = 4.1855 J/cm<sup>2</sup> = 3.6855 BTU/ft<sup>2</sup> = .01163 KW-hr/m<sup>2</sup>

## Station Summary

### Beatty 11SSE US Ecology Nevada

Monthly Summary for

**July, 2018**

Day of Month	Day of Year	Total Solar Rad. ly.	Wind		Air Temperature			Humidity			Dew Point Deg. Fahrenheit	Wet Bulb Deg. Fahrenheit	Total Precip inches	
			Ave V. Dir. mph	Max mph	Mea n Deg. Fahrenheit	Max	Min	Mea n Percent	Ma x	Mi n				
<a href="#">1</a>	182	744	5.6	166	20.8	93	106	74	10	16	6	26	57	0.00
<a href="#">2</a>	183	738	9.8	168	27.0	92	106	71	10	19	5	26	57	0.00
<a href="#">3</a>	184	726	14.6	156	27.9	91	103	80	16	27	7	37	59	0.00
<a href="#">4</a>	185	736	14.6	154	45.2	88	100	77	14	29	5	29	56	0.00
<a href="#">5</a>	186	727	7.2	218	24.0	88	104	67	8	17	3	15	53	0.00
<a href="#">6</a>	187	739	5.6	245	22.0	92	109	69	6	10	3	13	54	0.00
<a href="#">7</a>	188	587	9.2	172	26.0	94	109	76	14	24	9	38	61	0.00
<a href="#">8</a>	189	636	8.2	184	22.6	97	111	80	19	30	10	45	64	0.00
<a href="#">9</a>	190	620	10.8	141	36.0	96	107	83	19	34	12	46	64	0.00
<a href="#">10</a>	191	648	12.0	143	38.0	89	101	75	35	65	19	56	66	0.00
<a href="#">11</a>	192	529	7.2	159	29.4	89	101	79	35	47	23	57	67	0.00
<a href="#">12</a>	193	444	10.6	136	55.7	82	101	64	53	100	24	62	68	0.45
<a href="#">13</a>	194	673	6.3	165	21.0	86	100	70	47	82	23	61	68	0.00
<a href="#">14</a>	195	625	7.2	96	28.0	92	105	77	34	60	18	58	68	0.00
<a href="#">15</a>	196	682	7.3	150	20.2	94	108	80	30	53	15	56	68	0.00
<a href="#">16</a>	197	693	6.9	176	28.7	96	108	81	24	44	13	52	67	0.00
<a href="#">17</a>	198	697	8.4	147	25.0	98	111	81	19	36	11	48	65	0.00
<a href="#">18</a>	199	611	11.5	146	29.0	96	108	86	26	37	16	55	68	0.00
<a href="#">19</a>	200	683	13.3	129	31.4	95	109	84	30	46	12	56	68	0.13
<a href="#">20</a>	201	618	8.1	190	30.2	91	104	75	33	62	17	56	67	0.00
<a href="#">21</a>	202	525	12.1	152	39.1	91	102	78	27	42	16	51	65	0.00
<a href="#">22</a>	203	677	8.4	242	33.7	91	105	74	26	43	13	50	64	0.00
<a href="#">23</a>	204	695	8.3	290	26.0	95	108	79	21	38	11	46	64	0.00
<a href="#">24</a>	205	628	8.0	190	26.6	98	111	84	16	26	9	44	64	0.00
<a href="#">25</a>	206	689	9.1	221	40.8	99	112	83	17	31	8	45	65	0.00
<a href="#">26</a>	207	648	8.4	311	39.2	98	112	83	15	27	8	41	63	0.00
<a href="#">27</a>	208	687	7.2	276	26.2	98	112	80	13	26	6	37	62	0.00

<a href="#">28</a>	209	685	8.0	202	23.2	97	110	79	12	22	5	34	60	0.00
<a href="#">29</a>	210	676	10.5	147	26.4	97	110	86	15	28	7	40	62	0.00
<a href="#">30</a>	211	616	7.7	185	21.8	96	108	79	22	38	12	49	65	0.00
<a href="#">31</a>	212	578	11.6	137	32.1	95	108	86	25	39	16	53	67	0.00

MONTHLY STATISTICS

	Total	Wind			Air Temperature			Humidity			Dew	Wet	Total
	Solar Rad.	Ave	V. Dir.	Max	Mea n	Max	Min	Mea n	Ma x	Mi n	Point	Bulb	Precip
	ly.	mph	Deg	mph	Deg. Fahrenheit			Percent			Deg. Fahrenheit		inches
Total	20259												0.58
Ave.	654	9.2	166	29.8	93.3	106.7	78.0	22	39	12	44	63	
Max.	744	14.6		55.7	99	112	86	53	100	24	62	68	0.45
Min.	444	5.6		20.2	82	100	64	6	10	3	13	53	0.00

Data are subject to further review and editing. Please refer any questions to the Western Regional Climate Center.

° 1 ly = 1 cal/cm<sup>2</sup> = 4.1855 J/cm<sup>2</sup> = 3.6855 BTU/ft<sup>2</sup> = .01163 KW-hr/m<sup>2</sup>





- [28](#) 240
- [29](#) 241
- [30](#) 242
- [31](#) 243

MONTHLY STATISTICS

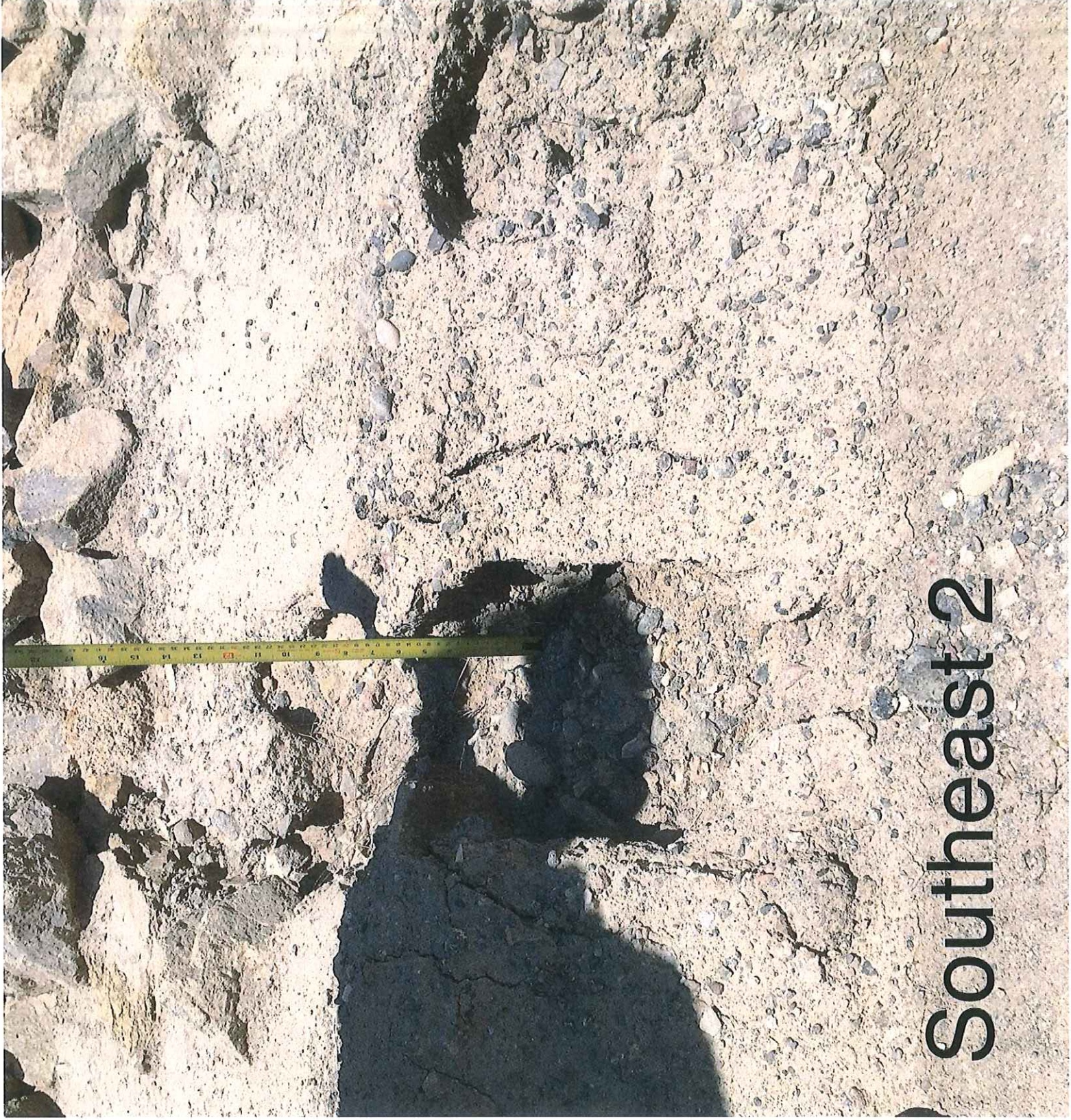
	Total Solar Rad. ly.	Wind		Air Temperature			Humidity			Dew	Wet	Total	
		Ave .	V. Dir.	Max .	Mea n	Max	Min	Mea n	Ma x	Mi n	Point	Bulb	Precip .
		mph	Deg Deg	mph	Deg. Fahrenheit			Percent			Deg. Fahrenheit		inches
Total	9544											0.00	
Ave.	636	8.2	200	27.5	92.2	106. 0	76. 3	18	30	10	38	61	
Max.	702	11.0		37.8	95	109	84	26	46	16	52	66	0.00
Min.	590	5.6		19.5	90	102	71	8	12	3	18	54	0.00

Data are subject to further review and editing. Please refer any questions to the Western Regional Climate Center.

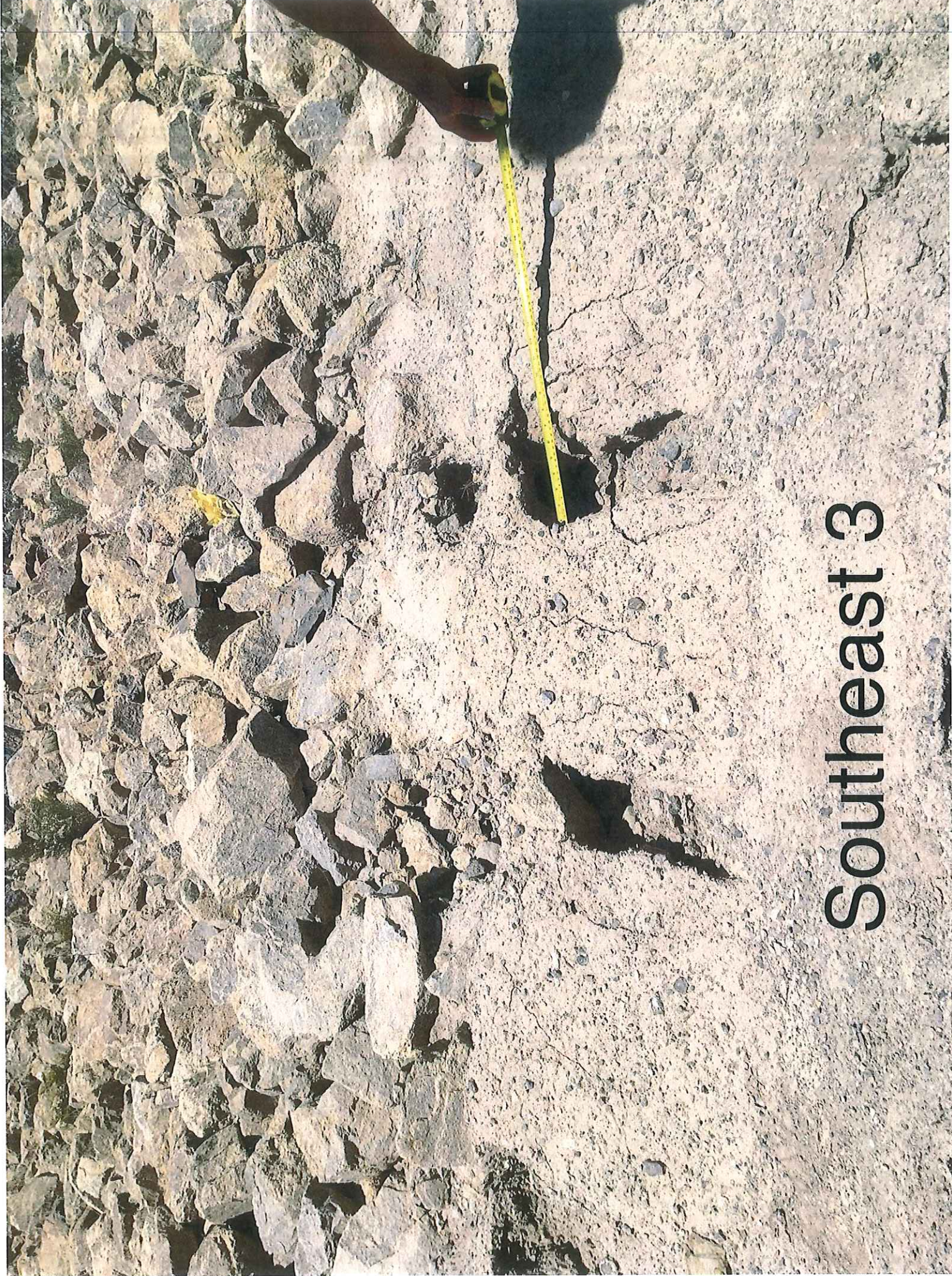
° 1 ly = 1 cal/cm<sup>2</sup> = 4.1855 J/cm<sup>2</sup> = 3.6855 BTU/ft<sup>2</sup> = .01163 KW-hr/m<sup>2</sup>



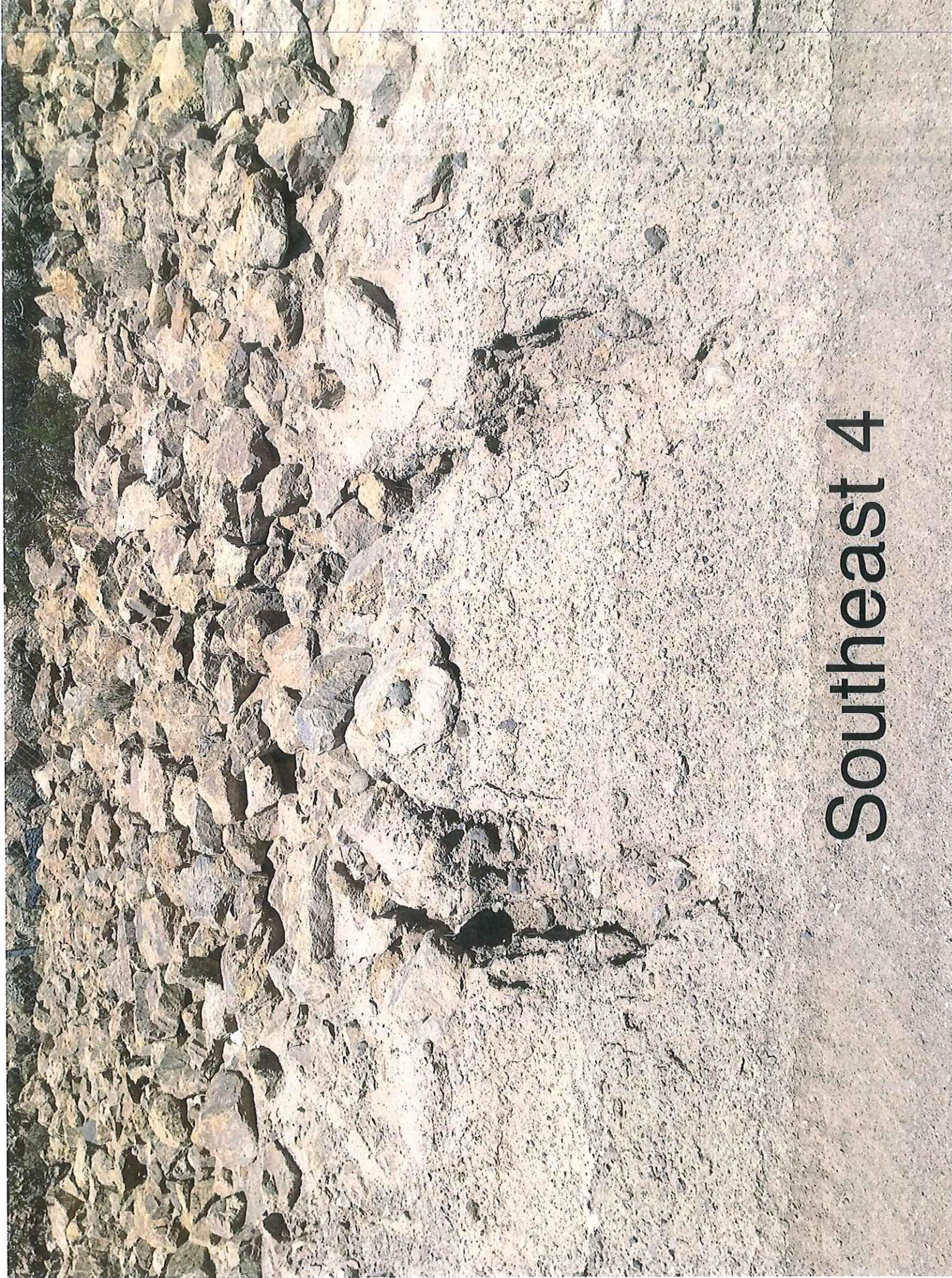
Southeast t



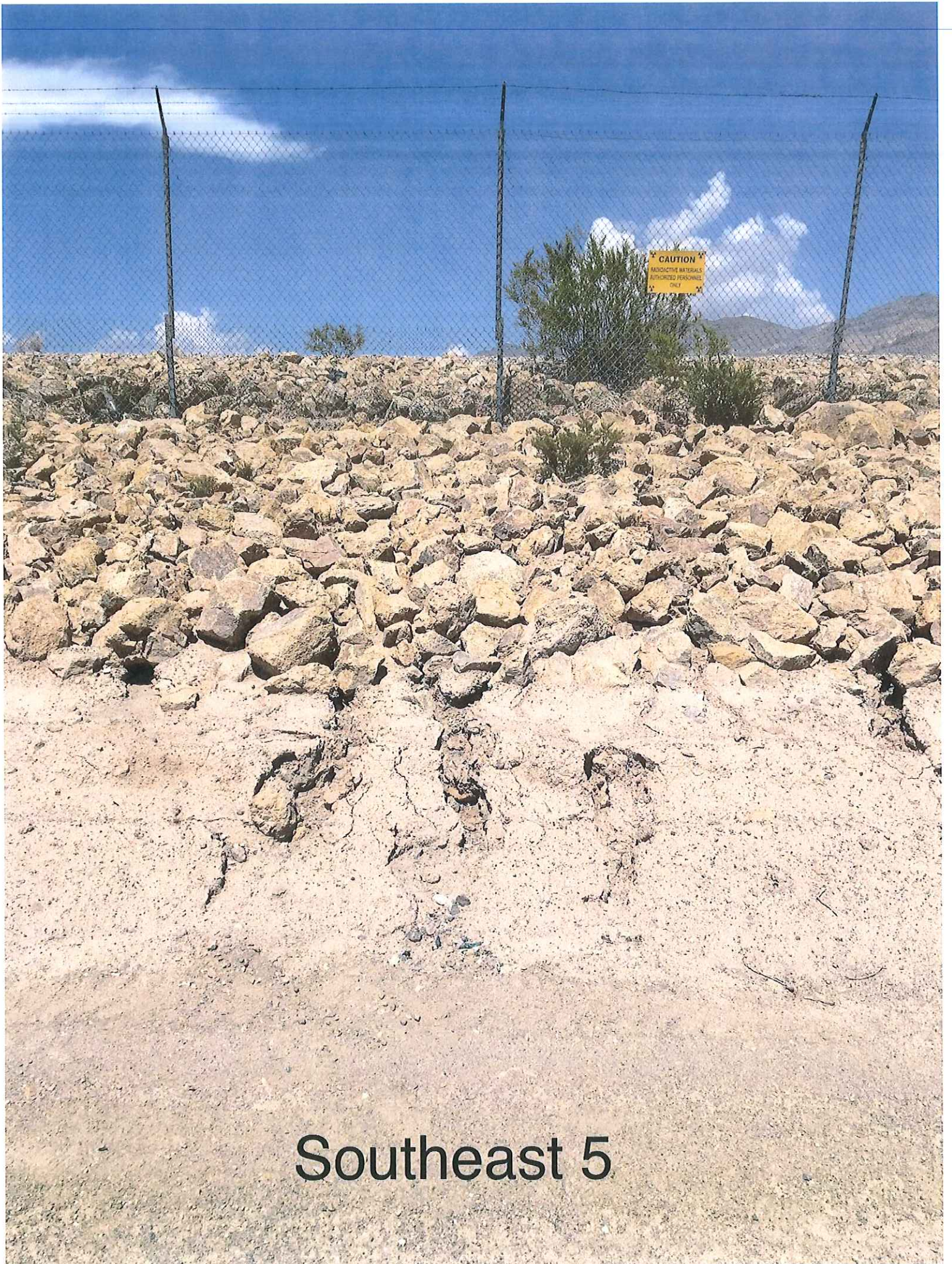
Southeast 2



Southeast 3



# Southeast 4

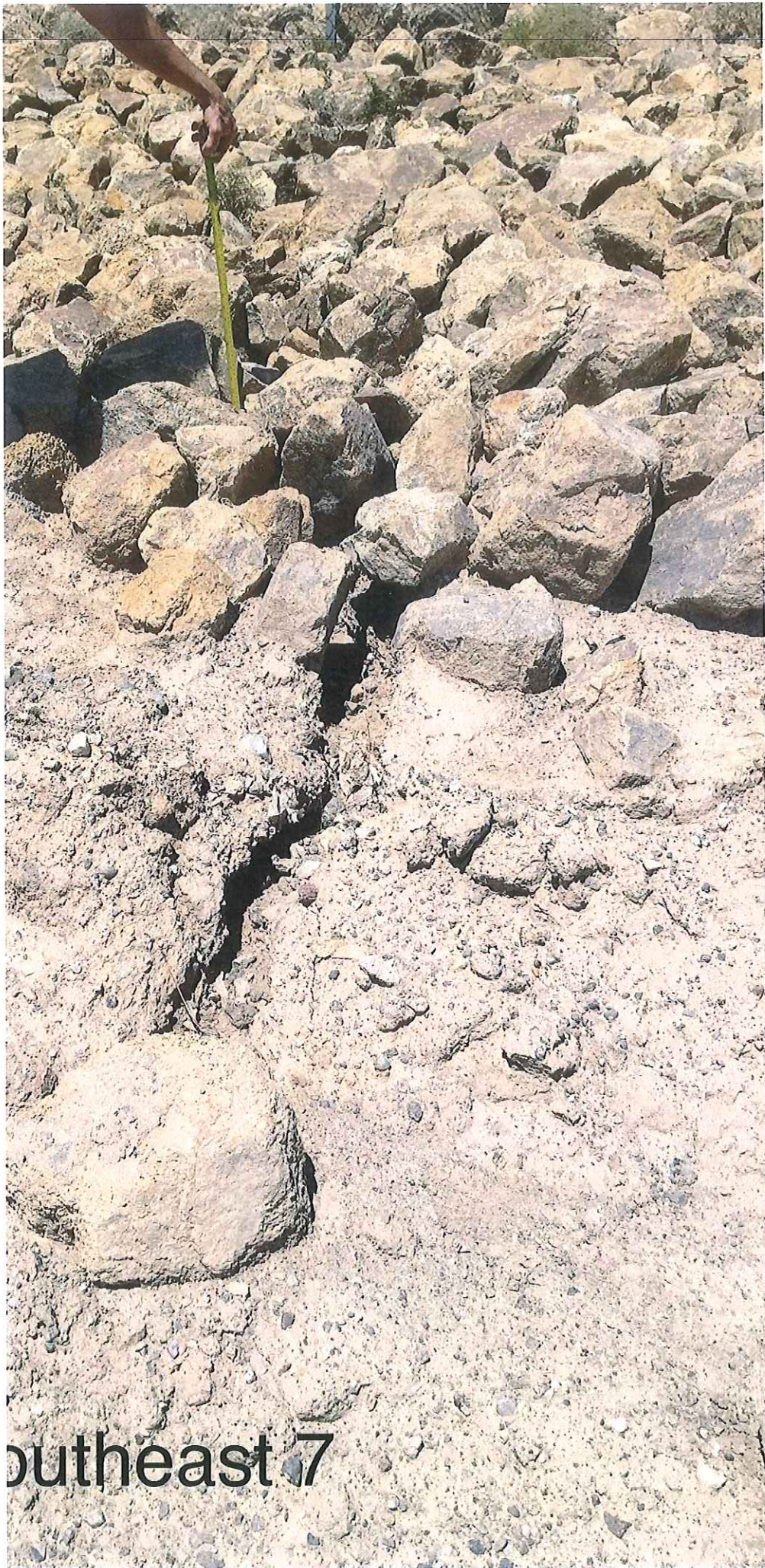


**Southeast 5**



Southwest 6





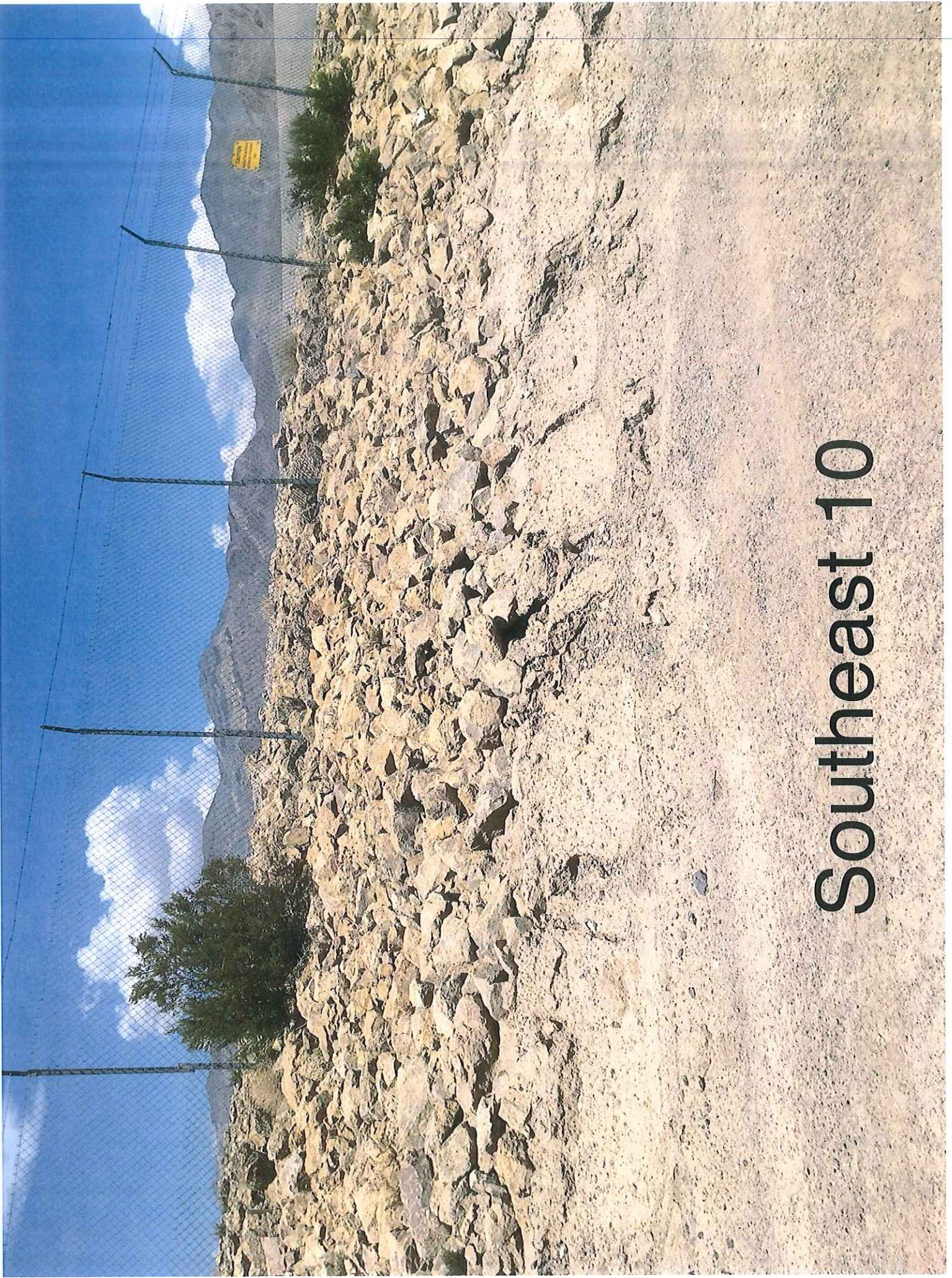
outheast 7



**Southeast 8**



Southeast 9



# Southeast 10



**Southeast 11**





