

Prescription Drug Monitoring Program Surveillance

Opioid Prescription Pattern Pre- and Post- Implementation of AB474

Excluding Medication Assisted Treatment Drugs

2017-2019

Prescription Drug Monitoring Program: January 1, 2017 - October 31, 2019



Office of Analytics

Department of Health and Human Services

Steve Sisolak

Governor

State of Nevada

Richard Whitley, MS

Director

Department of Health and Human Services

Department of Health and Human Services
Office of Analytics

Prescription Database Monitoring Program

Data Source: Department of Health and Human Services, Prescription Drug Monitoring Program System.

A new patient ID system was implemented in Quarter 1 of SFY2019. As a result, the values listed here may slightly differ from previous versions.

Data Provided by: Office of Analytics.

Opioid analgesic controlled substance prescriptions dispensed including schedule II, III, and IV prescription opioids dispensed to patients, as entered into the state prescription drug monitoring program (PDMP) system.

Data are total number of prescriptions filled to Nevada residents, this does not capture whether the medications were taken as prescribed or taken by the prescribed patient. A person can be included for more than one prescription and therefore the not mutually exclusive.

Opioids used to treat opioid addiction, moderate acute pain and moderate chronic pain are excluded from this report. These prescriptions include variations of the drugs listed below:

<i>Naloxone</i>	<i>52544</i>
<i>Buprenorphine/ Naloxone</i>	<i>00054, 00093, 00228, 00406, 42291, 50268, 50383, 53217, 54569, 55700, 60429, 65162</i>
<i>Probuphine</i>	<i>58284</i>
<i>Suboxone/Zubsolv</i>	<i>00490, 12496, 16590, 23490, 35356, 43063, 49999, 52959, 54123, 54569</i>
<i>Sublocade</i>	<i>49000</i>
<i>Methadone</i>	<i>00054, 54868, 55887, 57866, 66336, 68115</i>
<i>Buprenorphine</i>	<i>00054, 00093, 00228, 00378, 35356, 42858, 43063, 50383, 53217, 54569, 55700, 62756, 68258, 68308, 68308</i>

Please use caution when interpreting rates corresponding to small counts.

Impact Analysis: Opioid Prescription Patterns Pre and Post Implementation of AB 474

Excluding Medication Assisted Treatment Drugs

Prescription Drug Monitoring Program Data, January 2017 - October 2019

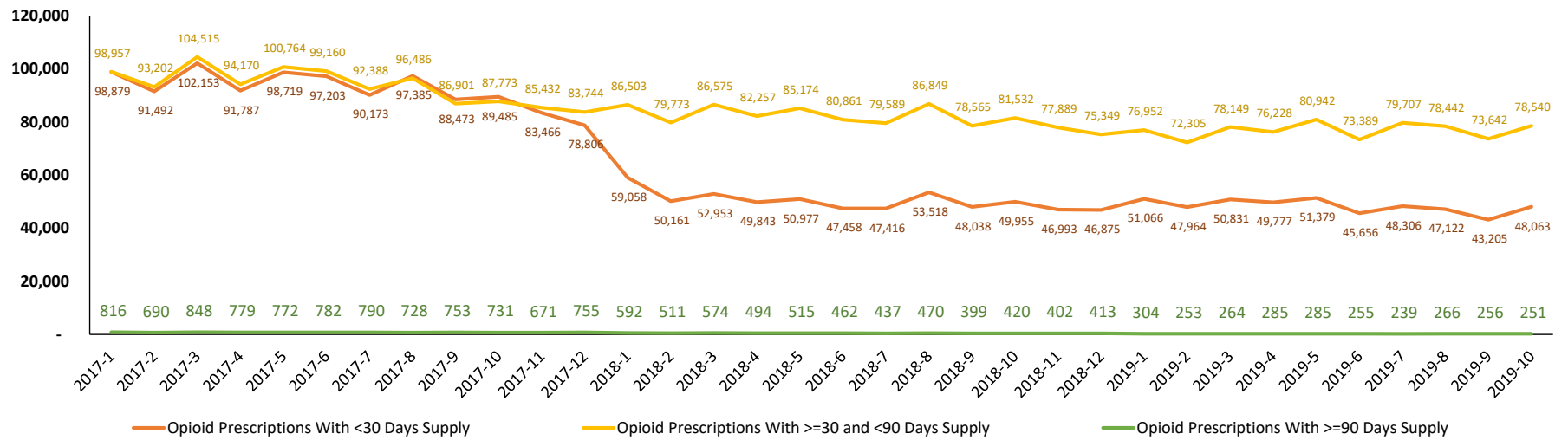
Summary Highlights:

- From January of 2017 to October of 2019, there was a 38% decrease in the rate of opioid prescriptions per 100 Nevada residents.
 - Opioid prescriptions with less than a 30 days supply decreased by 53%.
 - Opioid prescriptions with greater than or equal to a 30 days supply and less than a 90 days supply decreased by 23%.
 - Opioid prescriptions with greater than or equal to a 90 days supply decreased by 70%.
- All Nevada counties observed a decrease in both the number of and rate of opioid prescriptions by month, with the decrease in rates ranging from 33% (Nye) to 55% (Humboldt).
- The number of unique patients receiving less than 50 MMEs per month decreased 30% from January of 2017 to October of 2019.
- The number of unique patients receiving 50 MMEs to 90 MMEs per month decreased approximately 47% from January of 2017 to October of 2019.
- The number of unique patients receiving greater than 90 MMEs per month decreased 49% from January of 2017 to October of 2019.
- Diagnosis information is available for 2019 only (January - October):
 - Diseases of the Nervous System, Pain (ICD-10-CM code G89) was the most common diagnosis code on prescriptions with less than a 30 days supply, the fourth most common diagnosis code on prescriptions with a 30-89 days supply, and the second most common diagnosis code on prescriptions with a 90 day or greater days supply. Medication Assisted Treatment drugs (MAT) were excluded from this analysis, therefore Opioid Related Disorders (F11) did not appear as a top diagnosis.
 - Dorsalgia (back pain) was the second most common diagnosis code on prescriptions with less than a 30 days supply, the most common diagnosis code on prescriptions with a 30-89 days supply, and the most common diagnosis code on prescriptions with a 90 day or greater days supply.
- The number of individuals who were co-prescribed Opioid and Benzodiazepines during the same month also decreased significantly, by 60% in Nevada overall.

Opioid Prescription Counts and Rates per 100 Population For Less Than and Greater Than 30 Days and 90 Days by Month, January 2017 - October 2019

	Opioid Prescriptions With <30 Days Supply		Opioid Prescriptions With >=30 and <90 Days Supply		Opioid Prescriptions With >=90 Days Supply		Total Opioid Prescriptions by Month	
	N	Rate per 100 Population	N	Rate per 100 Population	N	Rate per 100 Population	N	Rate per 100 Population
2017-1	98,879	3.31	98,957	3.31	816	0.03	198,652	6.65
2017-2	91,492	3.06	93,202	3.12	690	0.02	185,384	6.21
2017-3	102,153	3.42	104,515	3.50	848	0.03	207,516	6.95
2017-4	91,787	3.07	94,170	3.15	779	0.03	186,736	6.25
2017-5	98,719	3.31	100,764	3.37	772	0.03	200,255	6.70
2017-6	97,203	3.25	99,160	3.32	782	0.03	197,145	6.60
2017-7	90,173	3.02	92,388	3.09	790	0.03	183,351	6.14
2017-8	97,385	3.26	96,486	3.23	728	0.02	194,599	6.52
2017-9	88,473	2.96	86,901	2.91	753	0.03	176,127	5.90
2017-10	89,485	3.00	87,773	2.94	731	0.02	177,989	5.96
2017-11	83,466	2.79	85,432	2.86	671	0.02	169,569	5.68
2017-12	78,806	2.64	83,744	2.80	755	0.03	163,305	5.47
2018-1	59,058	1.95	86,503	2.85	592	0.02	146,153	4.82
2018-2	50,161	1.65	79,773	2.63	511	0.02	130,445	4.30
2018-3	52,953	1.75	86,575	2.86	574	0.02	140,102	4.62
2018-4	49,843	1.64	82,257	2.71	494	0.02	132,594	4.37
2018-5	50,977	1.68	85,174	2.81	515	0.02	136,666	4.51
2018-6	47,458	1.57	80,861	2.67	462	0.02	128,781	4.25
2018-7	47,416	1.56	79,589	2.63	437	0.01	127,442	4.20
2018-8	53,518	1.77	86,849	2.86	470	0.02	140,837	4.65
2018-9	48,038	1.58	78,565	2.59	399	0.01	127,002	4.19
2018-10	49,955	1.65	81,532	2.69	420	0.01	131,907	4.35
2018-11	46,993	1.55	77,889	2.57	402	0.01	125,284	4.13
2018-12	46,875	1.55	75,349	2.49	413	0.01	122,637	4.04
2019-1	51,066	1.66	76,952	2.50	304	0.01	128,322	4.18
2019-2	47,964	1.56	72,305	2.35	253	0.01	120,522	3.92
2019-3	50,831	1.65	78,149	2.54	264	0.01	129,244	4.21
2019-4	49,777	1.62	76,228	2.48	285	0.01	126,290	4.11
2019-5	51,379	1.67	80,942	2.63	285	0.01	132,606	4.31
2019-6	45,656	1.49	73,389	2.39	255	0.01	119,300	3.88
2019-7	48,306	1.57	79,707	2.59	239	0.01	128,252	4.17
2019-8	47,122	1.53	78,442	2.55	266	0.01	125,830	4.09
2019-9	43,205	1.41	73,642	2.40	256	0.01	117,103	3.81
2019-10	48,063	1.56	78,540	2.56	251	0.01	126,854	4.13
% Change	-51.39%	-52.76%	-20.63%	-22.87%	-69.24%	-70.11%	-36.14%	-37.94%

Opioid Prescription Counts and Rates per 100 Population For Less Than and Greater Than 30 Days and 90 Days by Month, January 2017 - October 2019



Note: Annual population estimates were used for the denominator each month because monthly populations are not available. Therefore this representation is not comparable to annual prescription rates per 100 population.

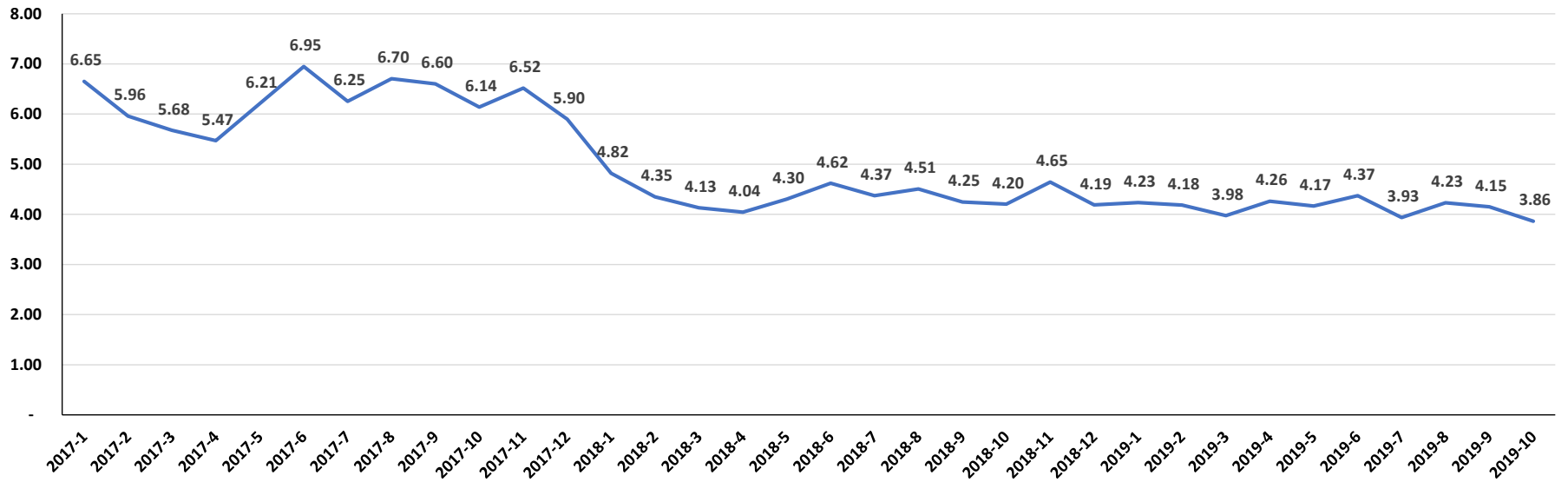
Opioid Prescription Counts by Month and Resident County, January 2017 - October 2019

	Carson City	Churchill	Clark	Douglas	Elko	Esmeralda	Eureka	Humboldt	Lander	Lincoln	Lyon	Mineral	Nye	Pershing	Storey	Washoe	White Pine	Total
2017-1	4,523	2,180	141,000	3,909	2,982	52	160	1,035	408	372	5,300	482	5,370	377	442	29,312	748	198,652
2017-2	4,113	2,048	124,916	3,611	2,792	36	127	916	373	374	4,957	510	4,870	312	398	26,893	743	177,989
2017-3	3,887	1,833	117,874	3,349	2,756	36	123	910	384	363	4,723	485	4,553	313	408	26,861	711	169,569
2017-4	3,774	1,873	113,637	3,450	2,357	31	106	853	318	335	4,584	485	4,324	294	403	25,819	662	163,305
2017-5	4,095	1,981	132,188	3,525	2,690	44	142	967	383	320	4,981	419	4,962	359	435	27,174	719	185,384
2017-6	4,537	2,285	147,793	4,074	3,100	58	142	1,047	469	312	5,665	482	5,547	384	469	30,378	774	207,516
2017-7	4,143	1,995	132,745	3,638	2,716	45	142	955	408	341	5,067	491	5,072	328	411	27,472	767	186,736
2017-8	4,508	2,229	142,232	3,823	3,015	49	145	920	400	448	5,302	452	5,334	397	465	29,706	830	200,255
2017-9	4,256	2,145	140,454	3,811	2,823	52	158	960	419	411	5,126	544	5,249	374	442	29,144	777	197,145
2017-10	4,031	2,068	130,630	3,456	2,868	56	132	900	418	356	4,960	456	4,861	296	392	26,704	767	183,351
2017-11	4,500	2,241	137,995	3,871	2,923	48	139	964	400	368	5,246	520	5,109	358	434	28,702	781	194,599
2017-12	4,113	2,061	124,041	3,570	2,768	47	137	892	377	373	4,923	506	4,723	298	415	26,166	717	176,127
2018-1	3,451	1,615	102,030	3,182	1,883	31	95	678	295	356	4,129	403	4,112	262	337	22,670	624	146,153
2018-2	3,016	1,504	93,475	2,955	1,781	23	94	533	230	311	3,732	344	3,938	279	295	18,836	561	131,907
2018-3	2,882	1,405	88,634	2,770	1,736	28	63	498	219	281	3,581	333	3,726	273	265	18,076	514	125,284
2018-4	2,857	1,332	86,397	2,751	1,734	22	71	500	217	297	3,512	333	3,683	244	262	17,890	535	122,637
2018-5	3,028	1,447	91,355	2,808	1,717	36	84	651	261	302	3,627	344	3,795	236	283	20,050	421	130,445
2018-6	3,258	1,570	97,911	3,026	1,836	34	97	672	265	324	3,945	383	4,059	265	337	21,552	568	140,102
2018-7	3,099	1,424	92,908	2,791	1,837	33	91	616	253	316	3,774	312	3,894	250	299	20,123	574	132,594
2018-8	3,148	1,526	95,910	2,990	1,912	30	98	673	281	316	4,012	337	4,043	257	345	20,198	590	136,666
2018-9	3,004	1,398	90,858	2,872	1,768	34	93	633	259	318	3,688	335	3,767	247	317	18,608	582	128,781
2018-10	2,994	1,381	89,855	2,851	1,786	33	86	565	288	333	3,680	314	3,730	227	328	18,459	532	127,442
2018-11	3,282	1,594	100,417	3,017	1,879	33	92	597	260	324	3,917	341	4,041	261	350	19,881	551	140,837
2018-12	2,919	1,351	90,754	2,797	1,667	26	79	470	228	276	3,539	276	3,673	211	316	17,921	499	127,002
2019-1	2,961	1,372	91,383	2,658	1,851	23	96	480	235	311	3,610	342	3,879	268	262	18,048	543	128,322
2019-2	3,111	1,110	90,562	2,750	1,748	27	68	504	207	272	3,310	338	3,938	215	254	17,953	487	126,854
2019-3	2,646	1,252	86,694	2,536	1,697	17	80	429	199	251	3,221	298	3,600	238	243	16,646	475	120,522
2019-4	2,982	1,213	92,445	2,741	1,705	23	78	437	138	285	3,608	337	3,911	216	244	18,379	502	129,244
2019-5	2,906	1,163	90,299	2,732	1,792	34	63	453	86	304	3,419	312	3,832	235	243	17,916	501	126,290
2019-6	2,947	1,254	95,325	2,714	1,779	31	84	500	226	312	3,584	335	3,977	237	257	18,533	511	132,606
2019-7	3,024	1,109	85,043	2,572	1,568	28	80	473	203	260	3,285	306	3,595	204	223	16,908	419	119,300
2019-8	3,306	1,246	91,222	2,757	1,729	30	85	480	226	316	3,551	340	3,969	212	246	18,109	428	128,252
2019-9	3,178	1,182	89,693	2,729	1,746	22	75	470	209	289	3,311	364	3,876	218	227	17,760	481	125,830
2019-10	2,980	1,020	83,760	2,517	1,585	32	72	468	193	198	3,153	295	3,633	207	215	16,315	460	117,103
% Change	-34.11%	-53.21%	-40.60%	-35.61%	-46.85%	-38.46%	-55.00%	-54.78%	-52.70%	-46.77%	-40.51%	-38.80%	-32.35%	-45.09%	-51.36%	-44.34%	-38.50%	-41.05%

Opioid Prescription Rates per 100 Population by Month and Resident County, January 2017 - October 2019

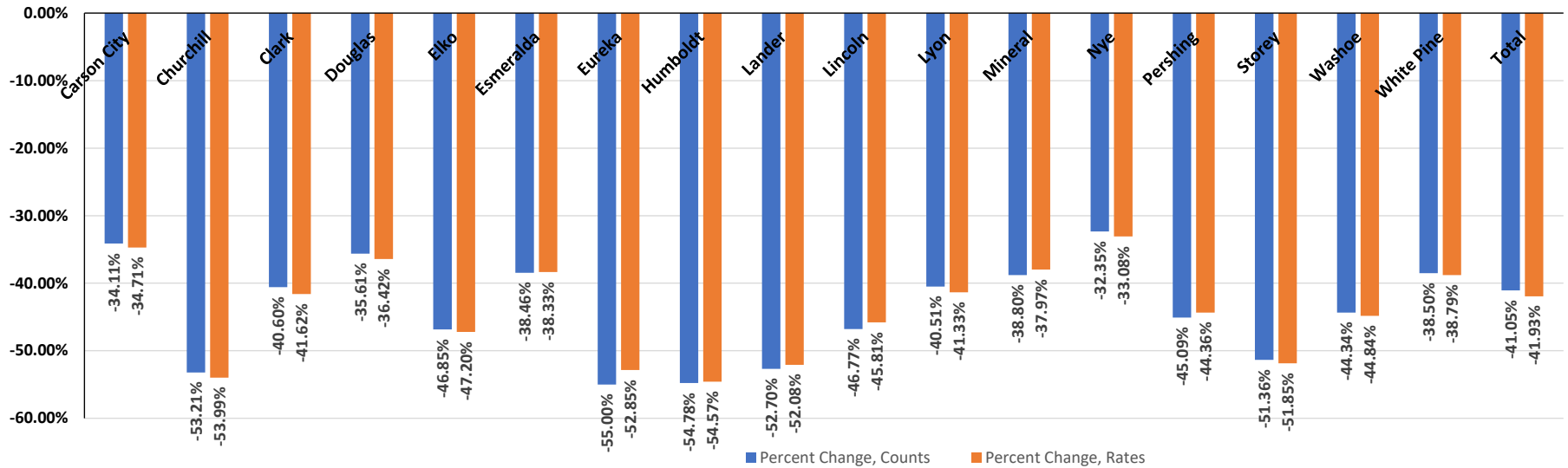
	Carson City	Churchill	Clark	Douglas	Elko	Esmeralda	Eureka	Humboldt	Lander	Lincoln	Lyon	Mineral	Nye	Pershing	Storey	Washoe	White Pine	Total
2017-1	8.16	8.59	6.43	8.09	5.60	5.36	8.28	6.10	6.58	7.20	9.70	10.31	11.58	5.59	10.82	6.49	6.99	6.65
2017-2	7.42	8.07	5.69	7.48	5.24	3.71	6.57	5.40	6.02	7.23	9.07	10.91	10.50	4.63	9.75	5.95	6.94	5.96
2017-3	7.01	7.22	5.37	6.93	5.17	3.71	6.37	5.36	6.19	7.02	8.64	10.38	9.81	4.64	9.99	5.94	6.64	5.68
2017-4	6.81	7.38	5.18	7.14	4.42	3.20	5.49	5.02	5.13	6.48	8.39	10.38	9.32	4.36	9.87	5.71	6.18	5.47
2017-5	7.39	7.80	6.03	7.30	5.05	4.54	7.35	5.70	6.18	6.19	9.11	8.96	10.70	5.32	10.65	6.01	6.72	6.21
2017-6	8.18	9.00	6.74	8.43	5.82	5.98	7.35	6.17	7.56	6.03	10.36	10.31	11.96	5.69	11.48	6.72	7.23	6.95
2017-7	7.47	7.86	6.05	7.53	5.10	4.64	7.35	5.62	6.58	6.60	9.27	10.50	10.93	4.86	10.06	6.08	7.16	6.25
2017-8	8.13	8.78	6.48	7.92	5.66	5.05	7.51	5.42	6.45	8.67	9.70	9.67	11.50	5.89	11.39	6.57	7.75	6.70
2017-9	7.68	8.45	6.40	7.89	5.30	5.36	8.18	5.65	6.76	7.95	9.38	11.64	11.31	5.55	10.82	6.45	7.26	6.60
2017-10	7.27	8.15	5.95	7.16	5.38	5.77	6.83	5.30	6.74	6.89	9.07	9.76	10.48	4.39	9.60	5.91	7.16	6.14
2017-11	8.12	8.83	6.29	8.01	5.49	4.95	7.19	5.68	6.45	7.12	9.60	11.13	11.01	5.31	10.63	6.35	7.30	6.52
2017-12	7.42	8.12	5.65	7.39	5.19	4.85	7.09	5.25	6.08	7.21	9.01	10.83	10.18	4.42	10.16	5.79	6.70	5.90
2018-1	6.17	6.26	4.57	6.51	3.51	3.20	5.15	4.01	4.82	7.01	7.45	8.74	8.77	3.94	8.17	4.97	5.80	4.82
2018-2	5.39	5.83	4.19	6.04	3.32	2.38	5.10	3.15	3.76	6.12	6.73	7.46	8.40	4.19	7.15	4.13	5.22	4.35
2018-3	5.15	5.44	3.97	5.66	3.24	2.89	3.42	2.95	3.58	5.53	6.46	7.22	7.94	4.10	6.42	3.96	4.78	4.13
2018-4	5.11	5.16	3.87	5.62	3.23	2.27	3.85	2.96	3.55	5.85	6.34	7.22	7.85	3.67	6.35	3.92	4.97	4.04
2018-5	5.41	5.61	4.09	5.74	3.20	3.72	4.56	3.85	4.26	5.95	6.54	7.46	8.09	3.55	6.86	4.40	3.91	4.30
2018-6	5.82	6.08	4.39	6.19	3.42	3.51	5.26	3.98	4.33	6.38	7.12	8.30	8.65	3.98	8.17	4.73	5.28	4.62
2018-7	5.54	5.52	4.16	5.71	3.42	3.41	4.93	3.65	4.13	6.22	6.81	6.76	8.30	3.76	7.25	4.41	5.34	4.37
2018-8	5.63	5.91	4.30	6.11	3.56	3.10	5.31	3.98	4.59	6.22	7.24	7.31	8.62	3.86	8.36	4.43	5.49	4.51
2018-9	5.37	5.42	4.07	5.87	3.30	3.51	5.04	3.75	4.23	6.26	6.65	7.26	8.03	3.71	7.68	4.08	5.41	4.25
2018-10	5.35	5.35	4.03	5.83	3.33	3.41	4.66	3.34	4.71	6.56	6.64	6.81	7.95	3.41	7.95	4.05	4.95	4.20
2018-11	5.87	6.17	4.50	6.17	3.50	3.41	4.99	3.53	4.25	6.38	7.07	7.39	8.62	3.92	8.48	4.36	5.12	4.65
2018-12	5.22	5.23	4.07	5.72	3.11	2.69	4.28	2.78	3.73	5.44	6.39	5.98	7.83	3.17	7.66	3.93	4.64	4.19
2019-1	5.29	5.31	4.09	5.43	3.45	2.38	5.21	2.84	3.84	6.12	6.51	7.42	8.27	4.03	6.35	3.96	5.05	4.23
2019-2	5.56	4.30	4.06	5.62	3.26	2.79	3.69	2.98	3.38	5.36	5.97	7.33	8.40	3.23	6.16	3.94	4.53	4.18
2019-3	4.73	4.85	3.88	5.18	3.16	1.76	4.34	2.54	3.25	4.94	5.81	6.46	7.68	3.58	5.89	3.65	4.42	3.98
2019-4	5.33	4.70	4.14	5.60	3.18	2.38	4.23	2.59	2.25	5.61	6.51	7.31	8.34	3.25	5.91	4.03	4.67	4.26
2019-5	5.19	4.50	4.05	5.59	3.34	3.51	3.42	2.68	1.41	5.99	6.17	6.76	8.17	3.53	5.89	3.93	4.66	4.17
2019-6	5.27	4.86	4.27	5.55	3.32	3.20	4.56	2.96	3.69	6.14	6.47	7.26	8.48	3.56	6.23	4.06	4.75	4.37
2019-7	5.41	4.30	3.81	5.26	2.92	2.89	4.34	2.80	3.32	5.12	5.93	6.63	7.67	3.07	5.40	3.71	3.90	3.93
2019-8	5.91	4.83	4.09	5.64	3.22	3.10	4.61	2.84	3.69	6.22	6.41	7.37	8.46	3.19	5.96	3.97	3.98	4.23
2019-9	5.68	4.58	4.02	5.58	3.25	2.27	4.07	2.78	3.42	5.69	5.97	7.89	8.26	3.28	5.50	3.89	4.47	4.15
2019-10	5.33	3.95	3.75	5.15	2.95	3.31	3.90	2.77	3.15	3.90	5.69	6.40	7.75	3.11	5.21	3.58	4.28	3.86
% Change	-34.71%	-53.99%	-41.62%	-36.42%	-47.20%	-38.33%	-52.85%	-54.57%	-52.08%	-45.81%	-41.33%	-37.97%	-33.08%	-44.36%	-51.85%	-44.84%	-38.79%	-41.93%

Nevada Opioid Prescription Rate per 100 Population, by Month, January 2017 - October 2019



Note: Annual population estimates were used for the denominator each month because monthly populations are not available. Therefore this representation is not comparable to **annual** prescription rates per 100 population.

Overall Percent Change (from January of 2017 to October of 2019) in Opioid Prescription Rates per 100 Population, by Resident County



Number of Opioid Prescriptions and Patients with Less Than 50 MMEs per Month, by Month and Resident County, January 2017 - October 2019

Carson City - Lander Counties

	Carson City		Churchill		Clark		Douglas		Elko		Esmeralda		Eureka		Humboldt		Lander	
	Prescriptions	Patients	Prescriptions	Patients	Prescriptions	Patients	Prescriptions	Patients	Prescriptions	Patients	Prescriptions	Patients	Prescriptions	Patients	Prescriptions	Patients	Prescriptions	Patients
2017-1	3,115	2,637	1,533	1,237	95,405	83,047	2,594	2,220	2,211	1,863	36	32	89	71	748	614	328	257
2017-2	2,775	2,443	1,372	1,144	89,680	79,256	2,378	2,049	1,957	1,699	31	28	75	63	677	588	306	250
2017-3	3,116	2,657	1,586	1,262	100,131	85,854	2,719	2,296	2,289	1,915	42	37	81	64	758	603	368	292
2017-4	2,831	2,462	1,392	1,173	90,222	79,730	2,401	2,063	2,009	1,746	31	28	72	65	694	598	334	266
2017-5	3,132	2,637	1,529	1,252	96,894	83,396	2,562	2,187	2,234	1,884	37	35	77	63	642	554	320	246
2017-6	2,948	2,509	1,457	1,174	95,568	82,374	2,555	2,183	2,118	1,833	36	32	88	78	683	585	324	249
2017-7	2,857	2,438	1,402	1,152	89,063	77,751	2,347	2,025	2,151	1,807	40	38	79	67	640	543	332	277
2017-8	3,130	2,558	1,514	1,171	94,451	81,177	2,629	2,203	2,172	1,805	35	28	83	73	689	583	308	233
2017-9	2,869	2,411	1,416	1,161	85,984	75,648	2,418	2,071	2,054	1,739	29	28	86	69	655	551	298	245
2017-10	2,856	2,423	1,380	1,165	85,987	75,341	2,470	2,106	2,069	1,710	26	24	81	70	667	553	295	226
2017-11	2,711	2,339	1,247	1,014	80,078	70,088	2,233	1,937	2,099	1,749	27	26	75	62	676	561	303	246
2017-12	2,646	2,255	1,270	1,039	77,877	67,925	2,375	2,039	1,755	1,495	22	21	64	56	599	507	249	200
2018-1	2,477	2,177	1,200	1,002	72,444	63,801	2,312	1,981	1,473	1,242	25	23	64	56	518	455	236	184
2018-2	2,191	1,949	1,084	924	65,341	58,948	2,083	1,814	1,317	1,148	30	26	56	47	508	458	215	175
2018-3	2,336	2,019	1,206	997	70,158	61,467	2,237	1,936	1,426	1,244	25	22	73	63	530	452	206	173
2018-4	2,270	1,989	1,083	926	67,031	59,991	2,067	1,836	1,438	1,232	24	21	61	51	481	435	195	166
2018-5	2,277	1,987	1,172	977	68,828	60,233	2,235	1,943	1,528	1,297	24	19	69	55	511	454	217	178
2018-6	2,237	1,976	1,073	924	65,699	58,456	2,179	1,929	1,399	1,195	29	26	67	57	486	441	207	170
2018-7	2,228	1,921	1,061	911	64,837	57,536	2,162	1,855	1,417	1,217	24	22	62	52	451	408	237	186
2018-8	2,497	2,147	1,262	1,047	72,029	62,657	2,299	1,963	1,513	1,283	29	27	66	57	452	384	226	179
2018-9	2,162	1,922	1,080	922	65,288	58,030	2,121	1,848	1,306	1,143	21	19	57	51	377	328	182	149
2018-10	2,256	1,975	1,203	988	68,153	59,475	2,281	1,955	1,415	1,222	18	16	78	70	419	366	185	149
2018-11	2,144	1,877	1,102	939	64,527	56,681	2,127	1,860	1,385	1,195	24	21	48	43	385	333	186	161
2018-12	2,120	1,867	1,033	892	62,696	55,547	2,098	1,839	1,390	1,213	17	17	55	51	375	345	178	155
2019-1	2,218	1,927	1,077	916	65,876	57,626	2,049	1,797	1,500	1,283	15	14	71	66	359	310	201	162
2019-2	1,970	1,728	983	862	62,374	55,731	1,988	1,744	1,380	1,189	13	11	58	52	335	296	170	150
2019-3	2,206	1,905	980	848	66,878	58,692	2,130	1,863	1,390	1,220	17	16	62	52	341	301	108	94
2019-4	2,201	1,917	943	824	65,487	57,375	2,126	1,865	1,456	1,224	26	19	53	47	365	326	59	51
2019-5	2,227	1,908	1,017	877	68,649	59,175	2,108	1,801	1,461	1,220	23	19	70	61	402	345	181	143
2019-6	2,275	1,958	910	790	61,685	55,192	2,001	1,755	1,277	1,105	22	21	62	57	369	328	168	145
2019-7	2,512	2,058	1,034	869	65,788	57,763	2,150	1,855	1,398	1,188	21	20	66	55	377	328	192	155
2019-8	2,396	1,981	953	805	64,722	57,093	2,147	1,819	1,434	1,238	16	14	58	50	373	326	177	151
2019-9	2,265	1,908	838	725	60,515	54,474	1,954	1,702	1,293	1,114	26	22	55	50	367	328	161	136
2019-10	2,346	1,934	916	788	65,556	57,329	2,171	1,868	1,461	1,231	20	19	55	47	398	336	176	142
% Change	-24.7%	-26.7%	-40.2%	-36.3%	-31.3%	-31.0%	-16.3%	-15.9%	-33.9%	-33.9%	-44.4%	-40.6%	-38.2%	-33.8%	-46.8%	-45.3%	-46.3%	-44.7%

Number of Opioid Prescriptions and Patients with Less Than 50 MMEs per Month, by Month and Resident County, January 2017 - October 2019

Lincoln - White Pine Counties

	Lincoln		Lyon		Mineral		Nye		Pershing		Storey		Washoe		White Pine	
	Prescriptions	Patients	Prescriptions	Patients	Prescriptions	Patients	Prescriptions	Patients	Prescriptions	Patients	Prescriptions	Patients	Prescriptions	Patients	Prescriptions	Patients
2017-1	255	222	3,576	3,036	321	271	3,592	3,149	275	223	293	247	19,959	16,869	514	413
2017-2	226	209	3,330	2,907	280	243	3,321	2,968	269	219	290	247	18,448	15,884	469	392
2017-3	233	189	3,829	3,174	321	267	3,745	3,227	288	232	309	265	20,638	17,091	503	396
2017-4	233	208	3,450	2,998	342	294	3,423	3,034	247	206	273	239	18,682	16,095	508	411
2017-5	317	237	3,622	3,074	320	272	3,626	3,152	309	253	313	264	20,230	16,813	562	440
2017-6	283	225	3,498	2,969	369	296	3,551	3,095	281	229	287	250	19,919	16,716	515	392
2017-7	235	208	3,395	2,909	309	265	3,317	2,919	221	184	263	221	18,284	15,626	536	418
2017-8	256	215	3,569	3,015	350	287	3,477	3,036	253	199	283	249	19,892	16,661	526	397
2017-9	256	226	3,372	2,925	344	285	3,276	2,889	226	182	289	253	18,185	15,626	474	378
2017-10	260	227	3,467	2,989	347	277	3,378	2,949	235	199	283	245	19,083	15,798	524	414
2017-11	256	218	3,242	2,802	315	269	3,143	2,738	228	194	287	247	19,106	15,122	477	375
2017-12	234	210	3,162	2,732	338	282	2,979	2,617	213	182	271	236	18,382	14,592	457	379
2018-1	258	209	2,983	2,589	301	261	2,913	2,569	204	167	246	216	17,062	13,550	456	369
2018-2	231	209	2,670	2,371	250	219	2,695	2,425	182	157	199	177	15,017	12,294	309	261
2018-3	239	211	2,887	2,514	283	238	2,895	2,507	208	178	228	201	16,235	12,946	421	343
2018-4	234	203	2,799	2,490	240	213	2,853	2,511	195	170	207	189	15,158	12,181	419	344
2018-5	234	200	2,982	2,544	253	210	2,968	2,569	198	162	237	207	15,096	12,497	422	347
2018-6	246	222	2,770	2,434	251	216	2,780	2,424	205	166	229	206	13,861	12,064	419	338
2018-7	254	215	2,789	2,420	240	215	2,734	2,411	185	158	224	193	13,851	12,057	384	316
2018-8	241	221	2,963	2,577	255	219	2,976	2,605	217	185	239	198	15,032	12,869	414	341
2018-9	207	189	2,650	2,355	204	186	2,696	2,436	177	155	223	201	13,500	11,854	363	308
2018-10	234	206	2,824	2,437	259	212	2,939	2,545	232	192	205	179	14,270	12,278	413	334
2018-11	212	192	2,703	2,366	251	217	2,746	2,418	222	181	187	166	13,770	11,909	379	311
2018-12	222	194	2,655	2,329	253	225	2,714	2,373	200	168	185	164	13,562	11,693	386	331
2019-1	238	205	2,731	2,362	252	217	2,883	2,511	216	182	195	168	13,724	11,731	402	331
2019-2	191	172	2,438	2,139	224	200	2,694	2,396	183	160	175	154	12,713	11,101	346	303
2019-3	214	200	2,760	2,401	253	222	2,933	2,576	182	158	175	152	14,066	12,163	362	313
2019-4	226	202	2,626	2,297	237	204	2,867	2,519	189	159	173	153	13,841	11,979	362	312
2019-5	225	195	2,774	2,403	256	209	2,983	2,574	191	163	193	162	14,300	12,173	378	316
2019-6	200	182	2,546	2,254	238	200	2,678	2,398	162	144	165	141	13,127	11,478	309	272
2019-7	232	201	2,756	2,376	250	215	2,972	2,565	167	138	183	154	14,040	11,949	307	246
2019-8	215	187	2,535	2,210	276	217	2,924	2,508	173	149	178	156	13,981	11,858	363	295
2019-9	141	133	2,451	2,147	220	184	2,733	2,430	157	134	165	144	12,715	11,134	347	299
2019-10	198	179	2,622	2,269	255	206	2,936	2,543	168	150	199	160	14,051	11,937	360	306
% Change	-22.4%	-19.4%	-26.7%	-25.3%	-20.6%	-24.0%	-18.3%	-19.2%	-38.9%	-32.7%	-32.1%	-35.2%	-29.6%	-29.2%	-30.0%	-25.9%

Number of Opioid Prescriptions and Patients with more than 50 and Less Than 90 MMEs per Month, by Month and Resident County, January 2017 - October 2019

Carson City - Lander Counties

	Carson City		Churchill		Clark		Douglas		Elko		Esmeralda		Eureka		Humboldt		Lander	
	Prescriptions	Patients	Prescriptions	Patients	Prescriptions	Patients	Prescriptions	Patients	Prescriptions	Patients	Prescriptions	Patients	Prescriptions	Patients	Prescriptions	Patients	Prescriptions	Patients
2017-1	791	689	445	388	25,570	22,724	762	682	524	468	9	8	42	37	172	143	63	58
2017-2	753	688	411	375	23,849	21,577	662	612	496	457	7	7	42	35	169	145	55	51
2017-3	810	705	496	420	26,874	23,239	785	692	550	479	9	8	40	37	166	145	76	63
2017-4	735	656	425	375	24,181	21,721	734	673	492	449	7	6	44	40	140	123	48	44
2017-5	750	654	486	411	25,764	22,474	724	653	538	473	4	4	44	40	165	147	49	43
2017-6	709	631	497	422	25,596	22,222	746	662	475	425	9	9	48	47	175	146	64	54
2017-7	657	598	473	402	23,662	20,865	646	585	480	422	9	9	34	33	160	144	61	53
2017-8	793	648	511	420	24,984	21,729	746	640	499	438	7	5	43	39	164	143	61	51
2017-9	714	615	475	407	22,139	19,922	696	620	474	425	14	11	36	35	141	120	60	53
2017-10	709	613	498	419	22,710	20,297	695	602	485	435	7	6	29	26	149	126	60	50
2017-11	666	591	426	354	21,678	19,240	646	580	437	396	7	7	35	31	141	118	57	49
2017-12	622	553	438	382	20,059	17,696	632	566	396	351	6	6	31	27	156	138	44	40
2018-1	520	450	288	258	15,609	13,822	510	460	263	223	4	4	23	20	98	92	36	31
2018-2	471	437	268	242	13,753	12,477	434	401	271	237	4	4	24	24	91	82	31	30
2018-3	526	455	264	238	14,587	12,747	492	443	273	232	5	5	19	17	84	77	42	36
2018-4	461	425	267	240	13,450	12,142	442	408	277	237	5	5	23	21	83	76	42	34
2018-5	498	423	263	235	14,079	12,272	461	420	258	217	3	3	25	23	101	94	41	34
2018-6	422	391	238	219	13,158	11,789	415	389	259	222	3	3	24	22	93	80	33	31
2018-7	437	397	228	203	12,931	11,501	412	371	254	207	7	5	21	21	64	61	34	31
2018-8	446	400	226	198	15,666	13,659	456	404	238	209	2	2	22	19	85	68	22	21
2018-9	417	379	193	181	14,000	12,707	425	404	240	215	4	4	15	15	55	50	32	28
2018-10	430	392	229	203	13,424	11,665	411	380	249	214	5	5	14	13	58	52	24	22
2018-11	406	374	226	189	12,659	11,233	410	376	230	199	4	4	14	11	68	60	20	20
2018-12	408	364	231	205	12,626	11,238	415	384	216	189	5	5	15	15	80	69	25	21
2019-1	419	371	216	191	13,994	12,427	394	346	224	186	7	5	22	19	73	60	18	17
2019-2	407	373	197	185	13,937	12,779	364	344	198	183	2	2	18	18	55	47	17	17
2019-3	440	390	155	139	14,668	13,040	404	362	201	181	5	4	13	13	52	47	14	11
2019-4	404	365	150	139	14,063	12,645	395	348	229	197	8	6	8	8	52	47	13	13
2019-5	419	372	166	148	15,024	13,057	390	344	197	173	6	6	11	11	62	53	23	19
2019-6	451	400	137	127	13,367	12,234	370	336	177	171	5	5	17	16	66	59	20	18
2019-7	474	407	142	125	14,506	12,804	383	340	200	179	6	6	17	15	69	60	12	12
2019-8	481	412	152	138	14,244	12,725	373	336	200	175	3	3	16	12	61	55	17	15
2019-9	436	387	126	122	13,403	12,340	376	340	183	159	4	4	15	12	68	60	15	11
2019-10	454	404	135	124	14,421	12,751	381	339	186	162	5	4	10	10	69	58	17	16
% Change	-42.60%	-41.36%	-69.66%	-68.04%	-43.60%	-43.89%	-50.00%	-50.29%	-64.50%	-65.38%	-44.44%	-50.00%	-76.19%	-72.97%	-59.88%	-59.44%	-73.02%	-72.41%

Number of Opioid Prescriptions and Patients with more than 50 and Less Than 90 MMEs per Month, by Month and Resident County, January 2017 - October 2019

Lincoln - White Pine Counties

	Lincoln		Lyon		Mineral		Nye		Pershing		Storey		Washoe		White Pine	
	Prescriptions	Patients	Prescriptions	Patients	Prescriptions	Patients	Prescriptions	Patients	Prescriptions	Patients	Prescriptions	Patients	Prescriptions	Patients	Prescriptions	Patients
2017-1	76	69	1,025	914	101	89	989	872	69	61	91	82	5,744	5,115	139	117
2017-2	52	49	1,006	922	89	81	932	860	64	58	86	79	5,358	4,813	136	122
2017-3	47	45	1,123	955	85	79	996	881	72	59	96	86	6,024	5,203	151	131
2017-4	67	62	995	891	84	80	941	851	55	53	80	75	5,474	4,899	157	133
2017-5	75	65	1,040	908	77	74	985	860	55	53	93	87	5,858	5,126	149	123
2017-6	73	66	1,013	873	104	89	994	872	64	58	96	89	5,716	5,037	150	118
2017-7	72	66	976	865	82	75	870	774	53	46	84	76	5,241	4,680	126	108
2017-8	68	58	1,051	907	93	84	932	805	67	55	101	90	5,489	4,827	135	108
2017-9	77	71	999	888	95	85	840	737	41	36	81	73	4,986	4,472	119	100
2017-10	74	63	967	860	86	81	858	750	44	40	79	68	4,891	4,371	128	112
2017-11	74	61	934	829	100	87	810	722	54	49	78	67	4,918	4,342	135	107
2017-12	70	61	903	795	80	77	786	689	54	48	81	73	4,639	4,165	118	94
2018-1	71	62	727	652	61	56	675	594	34	32	44	39	3,451	3,124	104	90
2018-2	53	47	606	557	53	51	613	566	32	27	42	40	3,077	2,833	73	68
2018-3	58	52	684	605	56	49	678	584	35	30	57	50	3,236	2,843	87	80
2018-4	63	54	638	578	41	40	594	546	40	36	46	45	3,001	2,714	97	81
2018-5	59	53	666	587	55	47	646	555	39	34	59	55	3,039	2,713	106	92
2018-6	55	50	596	540	54	46	582	531	23	23	47	43	2,891	2,638	99	84
2018-7	63	51	542	490	42	40	603	544	24	23	59	50	2,798	2,508	92	81
2018-8	62	54	619	541	54	48	644	574	25	23	64	56	2,990	2,653	87	78
2018-9	57	53	564	517	47	45	603	551	20	20	56	52	2,801	2,560	88	80
2018-10	58	53	604	529	58	50	613	540	31	28	41	38	2,887	2,552	88	74
2018-11	54	47	565	517	58	51	597	518	30	28	37	36	2,756	2,458	90	76
2018-12	56	49	575	522	51	50	592	524	28	27	34	31	2,724	2,457	96	78
2019-1	54	50	599	535	60	51	613	551	31	28	37	36	2,777	2,476	95	76
2019-2	42	36	532	497	48	44	576	534	37	32	37	36	2,508	2,317	81	72
2019-3	54	49	569	517	53	49	597	534	23	21	43	41	2,839	2,534	91	75
2019-4	63	53	541	489	50	49	582	530	30	27	44	41	2,621	2,351	91	79
2019-5	68	56	546	479	52	44	624	547	29	28	39	36	2,773	2,423	82	70
2019-6	47	45	513	473	46	43	552	503	29	26	42	36	2,526	2,295	66	61
2019-7	65	51	528	475	66	55	597	526	25	25	39	34	2,648	2,328	68	56
2019-8	58	51	533	477	65	52	584	528	26	22	32	30	2,499	2,234	75	70
2019-9	43	39	469	434	55	51	550	504	34	32	33	28	2,383	2,166	70	60
2019-10	56	47	450	415	59	50	592	533	28	26	38	33	2,603	2,290	79	68
% Change	-26.32%	-31.88%	-56.10%	-54.60%	-41.58%	-43.82%	-40.14%	-38.88%	-59.42%	-57.38%	-58.24%	-59.76%	-54.68%	-55.23%	-43.17%	-41.88%

Number of Opioid Prescriptions and Patients with more than 90 MMEs per Month, by Month and Resident County, January 2017 - October 2019

Carson City - Lander Counties

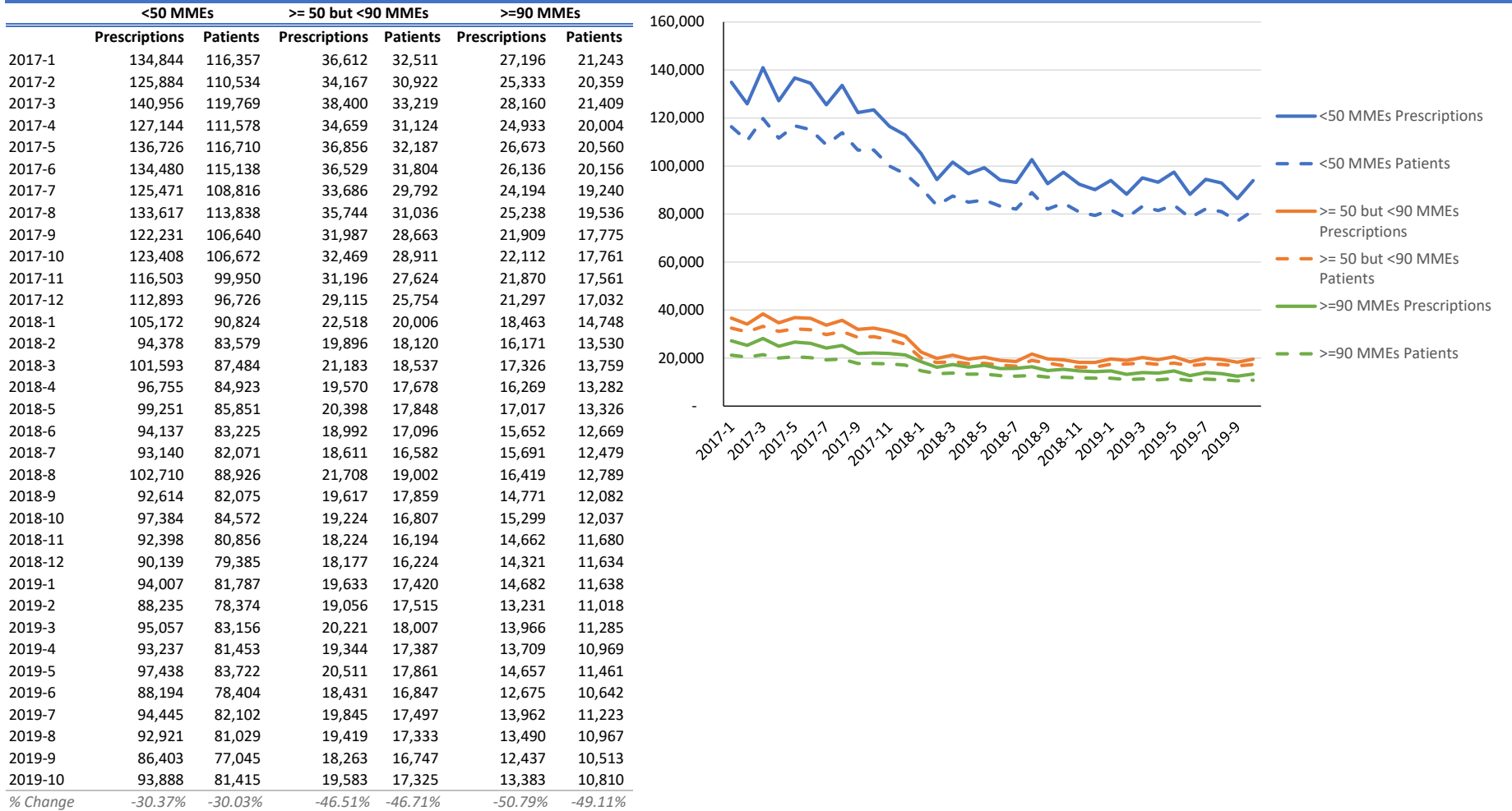
	Carson City		Churchill		Clark		Douglas		Elko		Esmeralda		Eureka		Humboldt		Lander	
	Prescriptions	Patients	Prescriptions	Patients	Prescriptions	Patients	Prescriptions	Patients	Prescriptions	Patients	Prescriptions	Patients	Prescriptions	Patients	Prescriptions	Patients	Prescriptions	Patients
2017-1	617	484	202	164	20,025	15,536	553	451	247	205	7	6	29	25	115	87	17	14
2017-2	567	455	198	168	18,659	14,947	485	403	237	191	6	5	25	22	121	98	22	18
2017-3	611	482	203	167	20,788	15,680	570	440	261	205	7	5	21	18	123	90	25	22
2017-4	577	459	178	148	18,342	14,652	503	418	215	179	7	7	26	21	121	99	26	24
2017-5	626	476	214	163	19,574	15,022	537	441	243	194	8	6	24	16	113	88	31	25
2017-6	599	477	191	147	19,290	14,832	510	411	230	186	7	5	22	14	102	81	31	22
2017-7	517	423	193	149	17,905	14,155	463	387	237	191	7	6	19	14	100	78	25	20
2017-8	577	435	216	157	18,560	14,361	496	382	252	192	6	5	13	10	111	79	31	25
2017-9	530	414	170	133	15,918	12,926	456	378	240	198	4	4	15	13	96	75	19	16
2017-10	548	441	170	130	16,219	13,027	446	364	238	197	3	3	17	13	100	78	18	15
2017-11	510	420	160	131	16,118	12,885	470	386	220	180	2	2	13	10	93	76	24	20
2017-12	506	411	165	135	15,701	12,504	443	365	206	175	3	2	11	10	98	73	25	23
2018-1	454	364	127	101	13,977	11,180	360	290	147	117	2	2	8	6	62	48	23	18
2018-2	366	323	95	77	12,261	10,272	291	256	129	111	2	2	4	3	52	40	15	12
2018-3	396	327	100	76	13,166	10,467	297	252	137	108	4	4	5	4	58	47	17	14
2018-4	368	313	74	61	12,427	10,158	282	241	122	97	4	4	7	4	52	42	16	13
2018-5	373	308	91	76	13,003	10,184	294	254	126	100	3	3	4	3	61	43	23	16
2018-6	345	295	87	65	12,001	9,726	278	241	110	93	2	2	2	2	54	43	19	13
2018-7	329	274	92	77	12,087	9,633	277	236	115	91	2	2	3	3	50	36	17	15
2018-8	339	280	106	79	12,722	9,906	262	228	128	102	2	2	4	3	60	46	12	10
2018-9	340	291	78	61	11,466	9,355	251	223	121	93	1	1	7	4	38	34	14	9
2018-10	330	271	72	55	11,898	9,359	263	222	117	91	-	-	2	2	56	39	21	12
2018-11	332	276	77	58	11,448	9,100	233	203	121	94	-	-	1	1	45	34	13	10
2018-12	329	272	68	58	11,075	9,073	238	202	128	98	-	-	1	1	45	34	14	11
2019-1	324	266	79	65	11,513	9,139	215	187	127	96	1	1	3	3	48	32	16	11
2019-2	269	232	72	61	10,383	8,673	184	163	119	93	2	2	4	4	39	28	12	9
2019-3	336	273	78	58	10,899	8,851	207	172	114	89	1	1	3	2	44	33	16	10
2019-4	301	251	70	54	10,749	8,638	211	182	107	73	-	-	2	2	36	29	14	10
2019-5	301	242	71	58	11,652	9,125	216	176	121	87	2	2	3	3	36	30	22	15
2019-6	298	246	62	52	9,991	8,442	201	173	114	82	1	1	1	1	38	29	15	11
2019-7	320	240	70	51	10,928	8,859	224	193	131	98	3	3	2	2	34	28	22	15
2019-8	301	241	77	55	10,727	8,727	209	176	112	86	3	3	1	1	36	27	15	12
2019-9	279	224	56	43	9,842	8,356	187	164	109	89	2	2	2	1	33	26	17	11
2019-10	311	249	59	51	10,585	8,572	198	168	101	79	2	2	3	2	37	30	14	10
% Change	-49.59%	-48.55%	-70.79%	-68.90%	-47.14%	-44.82%	-64.20%	-62.75%	-59.11%	-61.46%	-71.43%	-66.67%	-89.66%	-92.00%	-67.83%	-65.52%	-17.65%	-28.57%

Number of Opioid Prescriptions and Patients with more than 90 MMEs per Month, by Month and Resident County, January 2017 - October 2019

Lincoln - White Pine Counties

	Lincoln		Lyon		Mineral		Nye		Pershing		Storey		Washoe		White Pine	
	Prescriptions	Patients	Prescriptions	Patients	Prescriptions	Patients	Prescriptions	Patients	Prescriptions	Patients	Prescriptions	Patients	Prescriptions	Patients	Prescriptions	Patients
2017-1	41	35	699	584	60	51	789	628	33	28	58	53	3,609	2,821	95	75
2017-2	42	36	645	550	50	45	709	585	26	22	59	52	3,368	2,683	114	87
2017-3	32	27	713	579	76	60	806	630	24	22	64	57	3,716	2,847	120	87
2017-4	41	34	622	515	65	58	708	585	26	21	58	48	3,316	2,664	102	80
2017-5	56	37	640	535	55	48	723	570	33	30	59	49	3,618	2,780	119	88
2017-6	55	35	615	502	71	60	704	559	29	24	59	48	3,509	2,677	112	82
2017-7	49	40	589	492	65	57	674	541	22	20	45	41	3,179	2,545	105	85
2017-8	44	37	626	507	77	60	700	544	38	29	50	43	3,321	2,592	120	85
2017-9	40	37	552	462	67	58	607	496	31	26	45	38	2,995	2,420	124	86
2017-10	40	34	523	440	77	61	634	499	33	27	36	34	2,919	2,335	91	72
2017-11	33	29	547	453	70	61	600	484	31	23	43	39	2,837	2,297	99	73
2017-12	31	28	519	436	67	55	559	448	27	22	51	43	2,798	2,237	87	70
2018-1	27	22	419	347	41	33	524	414	24	20	47	35	2,157	1,709	64	50
2018-2	18	14	351	311	41	34	487	405	22	18	42	36	1,956	1,592	39	31
2018-3	27	23	374	317	44	32	486	388	22	15	52	41	2,081	1,599	60	48
2018-4	19	17	337	292	31	24	447	367	15	13	46	38	1,964	1,559	58	43
2018-5	23	18	364	299	29	24	429	348	20	17	49	40	2,063	1,559	62	40
2018-6	17	15	322	268	30	26	405	329	19	15	41	31	1,856	1,465	64	43
2018-7	16	14	349	288	32	31	393	310	18	15	45	35	1,810	1,382	56	41
2018-8	21	17	335	271	32	25	421	319	19	12	47	36	1,859	1,418	50	39
2018-9	12	11	325	274	25	23	374	309	14	11	37	30	1,620	1,315	48	40
2018-10	19	12	304	245	27	23	386	302	16	14	49	35	1,679	1,316	60	44
2018-11	15	13	313	253	24	22	383	309	21	14	41	29	1,550	1,232	45	35
2018-12	19	14	282	224	29	26	377	294	16	14	43	28	1,604	1,249	53	39
2019-1	19	17	280	233	30	25	383	300	21	11	30	21	1,547	1,197	46	36
2019-2	18	17	251	222	26	22	330	279	18	15	31	25	1,425	1,137	48	36
2019-3	17	17	279	229	31	26	381	301	11	10	26	20	1,474	1,156	49	38
2019-4	15	13	252	216	25	23	383	299	16	14	26	17	1,454	1,117	48	34
2019-5	19	15	264	219	27	24	370	298	17	13	25	17	1,460	1,101	51	38
2019-6	13	12	226	195	22	21	365	299	13	12	16	15	1,255	1,020	44	34
2019-7	19	14	267	220	24	22	400	319	20	14	24	18	1,421	1,097	53	34
2019-8	16	15	243	212	23	20	368	298	19	12	17	15	1,280	1,037	43	33
2019-9	14	13	233	204	20	19	350	289	16	14	17	15	1,217	1,018	43	30
2019-10	18	17	238	207	24	20	410	322	19	13	17	15	1,299	1,023	48	36
% Change	-56.10%	-51.43%	-65.95%	-64.55%	-60.00%	-60.78%	-48.04%	-48.73%	-42.42%	-53.57%	-70.69%	-71.70%	-64.01%	-63.74%	-49.47%	-52.00%

Nevada Opioid Prescriptions and Patients by MME per Month, by Month, January 2017 - October 2019



Opioid Prescriptions by Days Supply and Top 10 ICD-10-CM Group, January – October 2019

< 30 Days Supply		
Top 10 Diagnosis Groups	Prescriptions	
Diseases of the Nervous System, Pain, not elsewhere classified	G89	43,178
Dorsalgia	M54	39,706
Other joint disorder, not elsewhere classified	M25	13,043
Dental caries	K02	11,013
Thoracic, thoracolumbar, and lumbosacral intervertebral disc disorders	M51	10,036
Pain, unspecified	R52	9,343
Diseases of pulp and periapical tissues	K04	9,195
Spondylosis	M47	8,322
Abdominal and pelvic pain	R10	7,060
Other disorders of teeth and supporting structures	K08	5,173

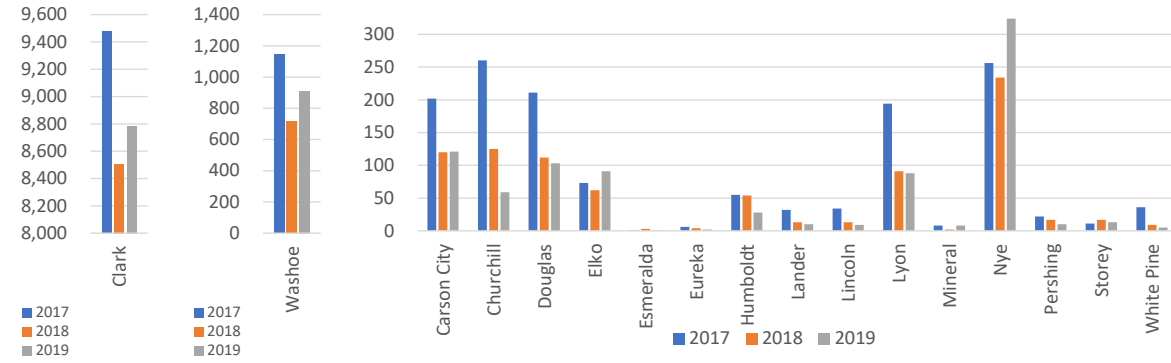
>= 30 but < 90 Days Supply		
Top 10 Diagnosis Groups	Prescriptions	
Dorsalgia	M54	163,395
Thoracic, thoracolumbar, and lumbosacral intervertebral disc disorders	M51	77,180
Spondylosis	M47	74,807
Diseases of the Nervous System, Pain, not elsewhere classified	G89	36,464
Other joint disorder, not elsewhere classified	M25	27,788
Intraoperative and postprocedural complications and disorders of musculoskeletal system, not elsewhere classified	M96	22,920
Cervical disc disorder w radiculopathy, unsp cervical region	M50	17,042
Other spondylopathies	M48	13,180
Neuralgia	M79	12,614
Osteoarthritis of knee	M17	10,517

>= 90 Days Supply		
Top 10 Diagnosis Groups	Prescriptions	
Dorsalgia	M54	457
Diseases of the Nervous System, Pain, not elsewhere classified	G89	140
Thoracic, thoracolumbar, and lumbosacral intervertebral disc disorders	M51	120
Other joint disorder, not elsewhere classified	M25	103
Neuralgia	M79	86
Other and unspecified osteoarthritis	M19	76
Spondylosis	M47	61
Migraine	G43	56
Polyosteoarthritis	M15	55
Osteoarthritis of knee	M17	44

Opioid Prescriptions with Refills Where Initial Rx is for < 15 Days Supply, by Month and Resident County, January 2017 - October 2019

	2017	2018	2019
Carson City	202	120	121
Churchill	260	125	59
Clark	9,475	8,506	8,785
Douglas	211	112	103
Elko	73	62	91
Esmeralda	1	3	1
Eureka	6	4	2
Humboldt	55	54	28
Lander	32	13	10
Lincoln	34	13	9
Lyon	194	91	88
Mineral	8	2	8
Nye	256	234	324
Pershing	22	17	10
Storey	11	17	13
Washoe	1,143	716	911
White Pine	36	9	5
Total	12,019	10,098	10,568

Only initial prescriptions filled in January of 2017, 2018, and 2019 were considered, respectively. Then, for each year, refill prescriptions were considered for January-October of 2017, 2018, and 2019 respectively. This was done in order to compare year over year between 2017 through 2019, since 2019 data are only through October.



Note: Clark and Washoe Counties are represented separately above due to the volume of prescriptions in those regions, and so that the differences in the smaller regions can be seen in the graphs.

Number of Individuals who were Co-Prescribed Benzodiazepines and Opioids in the Same Month, by Month and Resident County, January 2017 - October 2019

	Carson City	Churchill	Clark	Douglas	Elko	Esmeralda	Eureka	Humboldt	Lander	Lincoln	Lyon	Mineral	Nye	Pershing	Storey	Washoe	White Pine	Total
2017-1	653	285	22,328	515	320	4	24	101	55	59	651	49	871	47	71	3,848	93	29,974
2017-2	577	246	20,688	446	294	4	21	119	55	49	598	57	832	40	69	3,486	99	27,680
2017-3	650	280	22,797	500	368	8	26	123	46	47	665	61	896	49	66	3,800	101	30,483
2017-4	577	256	20,281	441	311	5	22	102	45	60	592	55	802	42	56	3,493	92	27,232
2017-5	656	266	21,469	486	341	5	23	103	37	52	608	46	883	53	61	3,664	115	28,868
2017-6	607	262	20,850	484	303	4	22	109	39	54	589	59	804	48	56	3,557	101	27,948
2017-7	537	232	19,370	438	313	7	21	96	37	50	523	47	744	34	50	3,226	102	25,827
2017-8	581	275	20,314	484	330	7	24	105	41	49	566	56	761	34	53	3,457	92	27,229
2017-9	551	272	18,317	455	294	5	25	94	31	45	534	50	688	26	58	3,202	89	24,736
2017-10	615	262	18,614	458	314	4	15	111	36	53	540	50	741	27	54	3,281	100	25,275
2017-11	556	246	17,311	427	291	7	18	97	34	45	541	56	651	34	55	3,173	84	23,626
2017-12	539	255	16,554	479	230	4	16	107	34	50	534	57	645	32	58	2,991	85	22,670
2018-1	516	229	15,039	405	202	6	9	87	34	50	464	37	608	27	40	2,652	81	20,486
2018-2	431	217	12,787	370	173	3	14	67	30	48	431	44	520	26	38	2,374	53	17,626
2018-3	456	203	13,673	394	198	6	14	72	25	44	423	40	568	29	44	2,484	79	18,752
2018-4	459	186	13,074	375	182	6	12	71	25	49	413	31	538	24	40	2,366	76	17,927
2018-5	434	208	12,690	374	178	3	12	67	29	46	411	33	520	27	38	2,229	88	17,387
2018-6	419	161	11,427	368	186	3	11	61	23	45	362	32	476	23	35	1,975	82	15,689
2018-7	372	167	10,786	350	192	2	9	55	26	41	357	39	476	22	33	1,909	82	14,918
2018-8	409	167	11,309	376	183	3	11	40	26	49	383	36	488	27	37	1,974	79	15,597
2018-9	362	133	10,049	322	164	3	13	30	20	39	339	33	436	26	39	1,812	76	13,896
2018-10	391	149	10,195	356	170	3	10	34	23	54	361	37	445	29	28	1,878	78	14,241
2018-11	339	157	9,686	347	154	4	8	31	28	45	334	42	395	28	30	1,749	75	13,452
2018-12	364	142	9,248	352	162	3	8	35	17	45	355	35	413	22	31	1,820	80	13,132
2019-1	363	138	9,712	306	168	3	10	23	25	52	361	44	443	23	26	1,758	74	13,529
2019-2	322	114	8,849	292	132	2	8	29	15	48	297	33	394	20	26	1,537	74	12,192
2019-3	362	67	9,380	306	157	3	6	33	12	57	342	34	415	19	26	1,784	75	13,078
2019-4	347	83	9,199	304	131	3	7	23	4	63	314	30	434	21	24	1,764	75	12,826
2019-5	346	94	9,767	300	157	2	11	21	20	58	352	32	428	20	21	1,827	73	13,529
2019-6	334	65	8,626	321	121	1	12	25	20	54	279	27	429	18	23	1,572	66	11,993
2019-7	355	73	9,004	323	146	3	8	32	17	64	292	31	406	17	21	1,636	59	12,487
2019-8	328	76	8,511	324	134	4	6	19	20	60	276	32	391	17	26	1,624	66	11,914
2019-9	311	57	8,114	273	121	2	6	17	21	41	245	25	346	15	16	1,446	59	11,115
2019-10	315	82	8,585	284	148	2	6	26	17	52	251	30	389	19	22	1,589	59	11,876
Total	15,434	6,105	468,603	13,035	7,268	134	468	2,165	967	1,717	14,583	1,400	19,276	965	1,371	82,937	2,762	639,190
% Change	-51.76%	-71.23%	-61.55%	-44.85%	-53.75%	-50.00%	-75.00%	-74.26%	-69.09%	-11.86%	-61.44%	-38.78%	-55.34%	-59.57%	-69.01%	-58.71%	-36.56%	-60.38%

Number of Individuals who were Co-Prescribed Benzodiazepines and Opioids in the Same Month, by Month and Resident County, January 2017 - October 2019

