

Battle Mountain General Hospital Construction Project

PRESENTED BY: JASON BLEAK, CEO
TOM CALLA, CTA

MIKE SHEPPARD, MICHAEL CLAY CORP.
AMY LINDGREN, CTA

- Lander County Hospital District dba Battle Mountain General Hospital established June 16, 1983. It is the only hospital service in Lander County.
- 5 Member Elected Board
- Lander County Population: 6,195 in 2021
- Provide Full Spectrum of Care. (Primary Care, Outpatient Behavioral Health, Outpatient Ancillaries, EMS, Emergency Room, Acute, Swing-Bed, Long-Term Care)



Current Hospital

- 5 Licensed beds in 3 rooms (Acute and Swing-bed)
- 5 Emergency Department gurneys
- 25 Long-term Care Beds
- X-ray, CT, Ultrasound and Mobile MRI Imaging
- In-house and Reference Lab Services
- No surgical procedures or specialty services
- 10 Medical Providers (5 clinic; 5 ER)
- Recent introduction of outpatient specialists to Battle Mountain
- Parts of the hospital and grounds in need of upgrade and replacement



Obstacles to Care

- Two double occupancy rooms
- Walls separating nursing staff from acute/swing-bed patients
- Long-term care without barrier of separation from acute patient population
- No space to expand specialty outpatient services
- Old work spaces need updating
- No space to quarantine or cohort infectious illness
- Steep grade from parking lot to facility entrance
- Narrow ambulance driveway
- Very old air handlers
- No safe place for behavioral health patients



Strategic Goals of Construction

Enhance hospital's ability to care for county residents and visitors:

- Support provider recruitment efforts
- Provide space for specialty outpatient procedures
- Avoid costly transfers by admitting more patients.

7 private acute/swing-bed rooms:

- Provides for better control of infectious disease
- Provide comfortable private patient rooms
- Protects personal and cultural lifestyles
- Provides recovery space for outpatient procedures
- Provides space to quarantine / cohort infections
- Each room will have a private restroom with shower
- Provide better HIPPA compliant care area

Doors to separate long-term care residents from hospital patients:

- This separation will better protect the long-term care residents



Strategic Goals of Construction (Continued)

Centralized Nursing Station:

- Nursing staff will be able to easily flow from the Emergency Department to the acute rooms without structural barriers.
- Staff efficiency and care will improve

Observation Room for Behavioral Health Patients:

- Provide a safe room designed for a behavioral health patient in crisis

Redesign Parking Lot and Build Covered Drop-off Area:

- Provide a level and safe entrance for elderly and handicap patients
- Provide a covered drop-off area during inclement weather

Enlarge patient waiting area:

- Improved comfort and confidentiality for patients



Financial Stability

- ❖ Battle Mountain General Hospital will pay for this project with funds that have been saved and designated for construction and capital expenditures. (Current construction account contains approximately \$18,000,000)
- ❖ BMGH hopes to provide new and enhanced services that will better serve the community and bring additional revenues for the future.
- ❖ BMGH will not increase service rates due to the cost of this construction project.

Existing Plan

Main Entry:

- Inefficient waiting area in the middle of circulation.
- Unsecured reception space.
- Oversized reception area.
- Undersized staff work area.

Emergency Department:

- Exterior emergency vehicle and public vehicle traffic enter in the same location causing congestion and confusion.
- Treatment and Exam rooms are under sized and disorganized.
- Poor connection with staff in Acute Care.

Acute Care:

- Three rooms, two are double occupancy and one is isolation.
- Isolation is not up to current codes and standards.
- Poor connection to ED.

Imaging/Radiology:

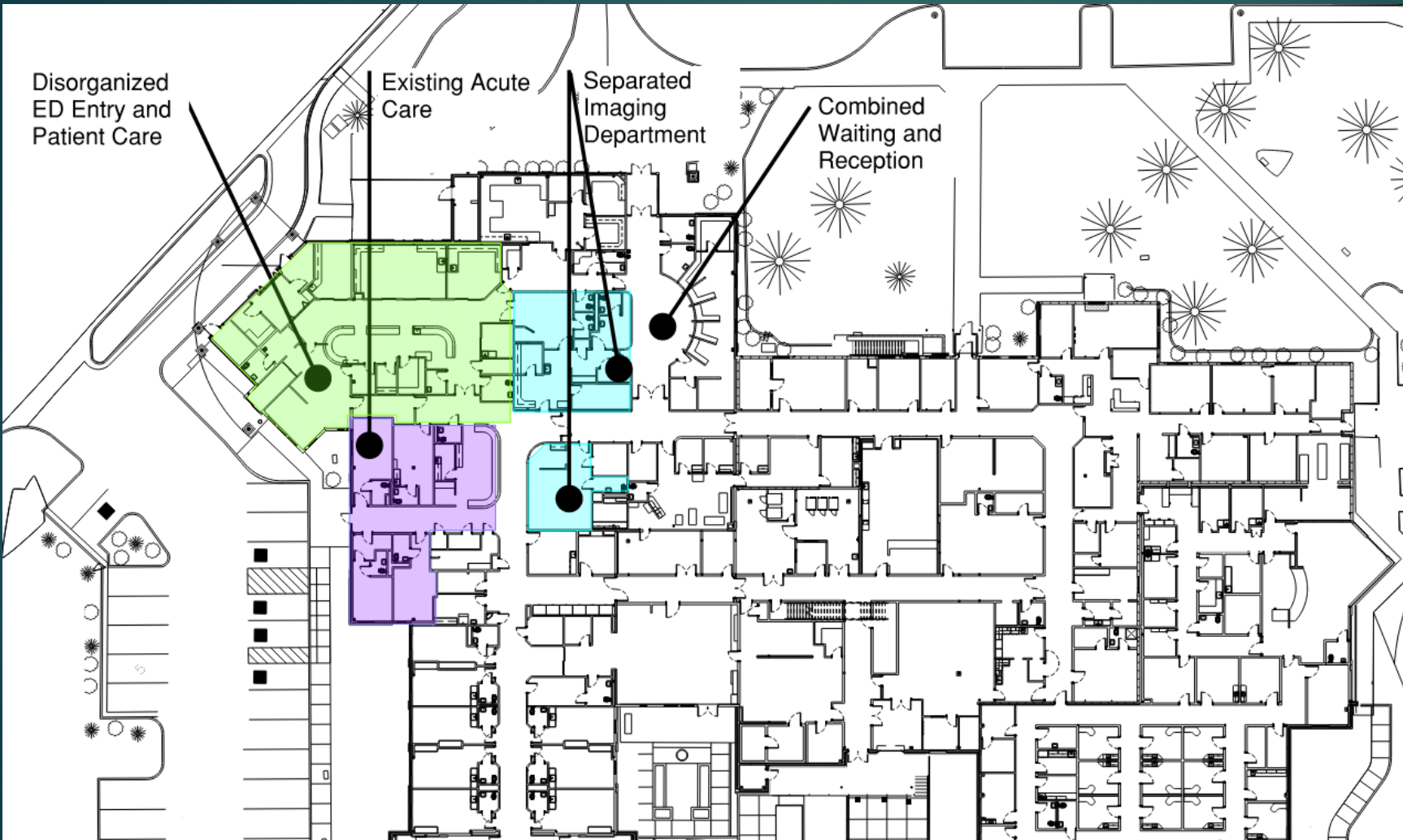
- CT is not part of the Imaging Suite; it is across a public corridor.
- Imaging rooms are slightly undersized for any future equipment upgrades.

Procedure Room:

- Added procedure room allows for visiting Physicians to perform small procedures in the hospital with access to Acute care.

Laboratory:

- Improved finishes provide durability in the lab.



Remodeled Plan

Main Entry:

- New entry adds security and safety for staff.
- Consolidates and improves waiting
- Consolidates and improves staff work areas.

Emergency Department:

- Improved patient treatment areas
- Improved staff areas
- Improved connection to Acute care area for admitting and staff utilization.

Acute Care:

- Improved connection for staff visibility
- All single rooms.
- Two Isolation rooms.
- Better connection to public corridors for improved wayfinding.

Imaging/Radiology:

- Consolidates and improves patient flow from ED and Public.
- Allows all equipment to be in one suite.

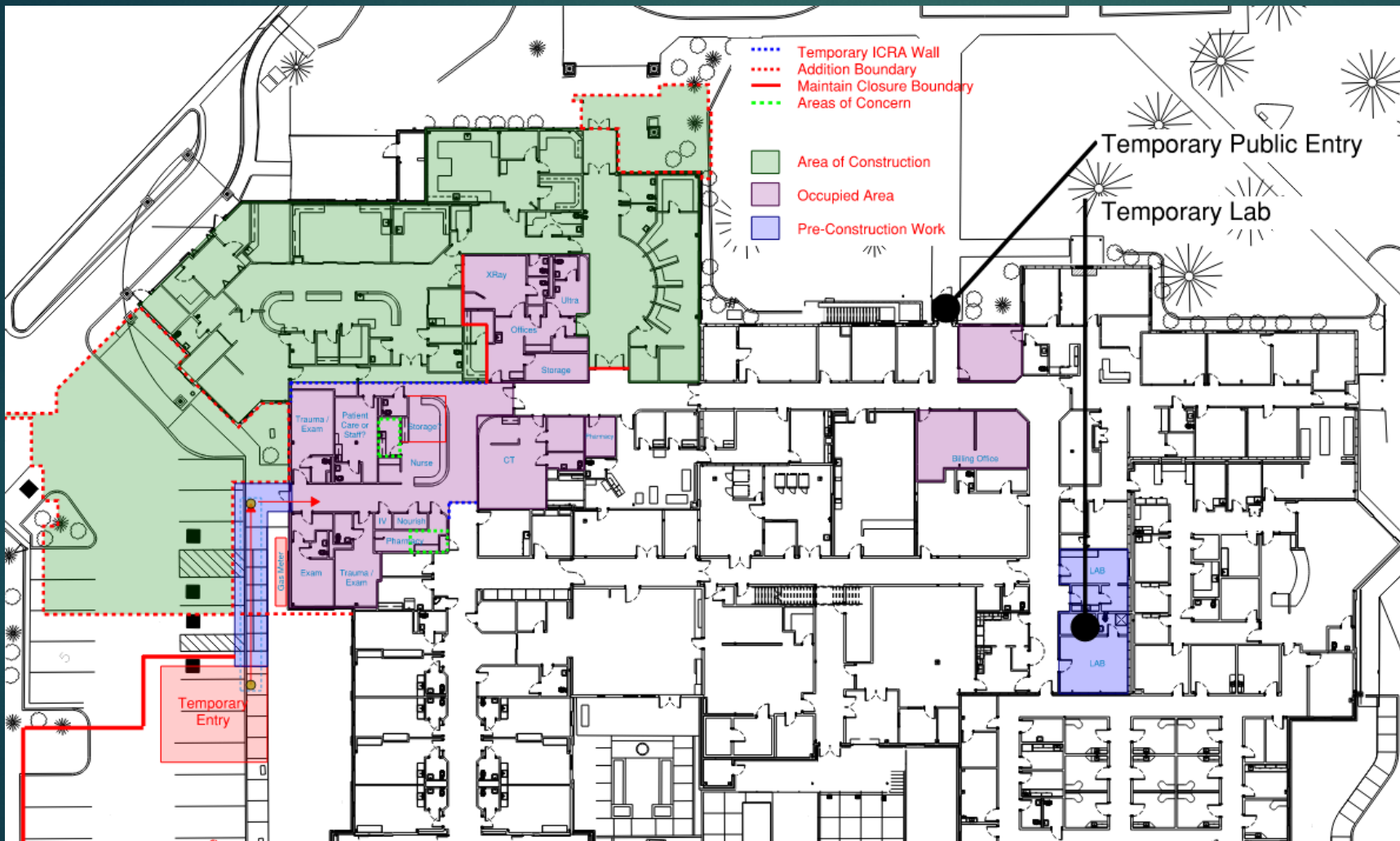
Procedure Room:

- Added procedure room allows for visiting Physicians to perform small procedures in the hospital with access to Acute care.

Laboratory:

- Improved finishes provide durability in the lab.





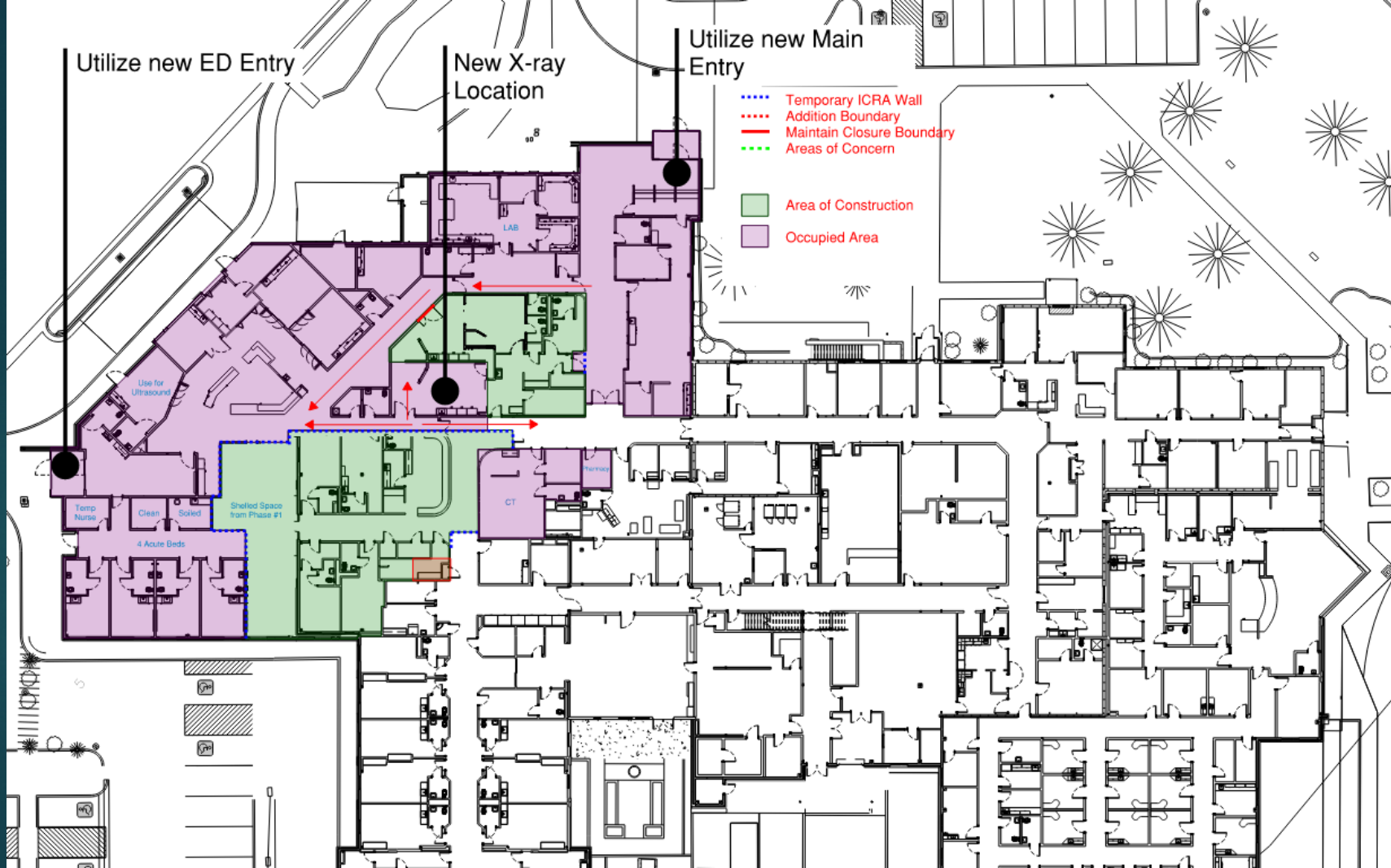
Phasing Plan

Pre-Construction Phase:

- Relocate Lab to temporary location
- Construct temporary ED Access and Waiting.
- Emergency Responders have reviewed and approved the temporary access.

Phase 1:

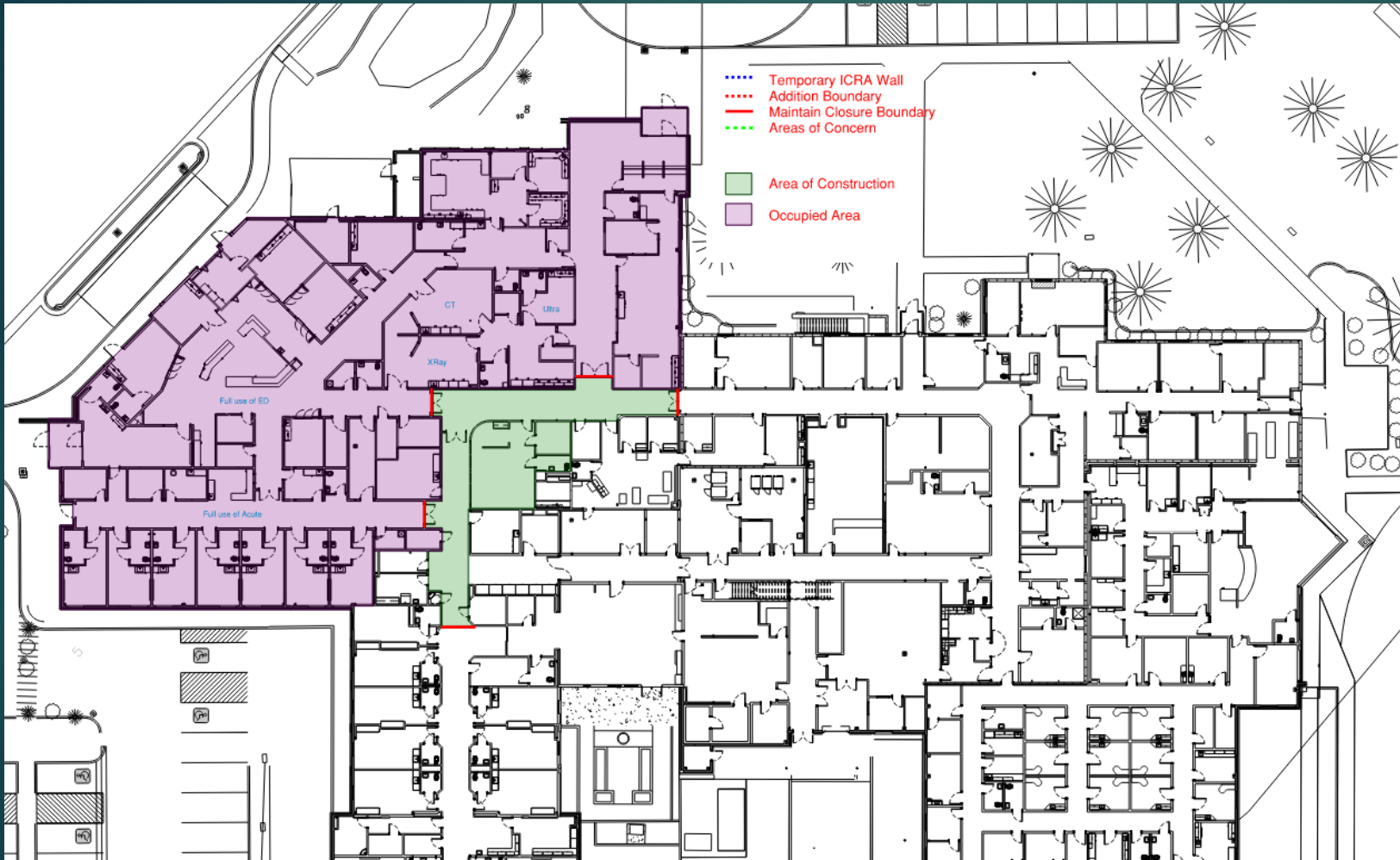
- Turn over area in Green to General Contractor.
- Emergency and Acute Departments operate out of the area in light Purple.
- Temporary Public Entrance is relocated, and Staff do intake in the light purple area.
- Billing Operates out of office area indicated in light purple south of temporary entry.



Phasing Plan

Phase 2:

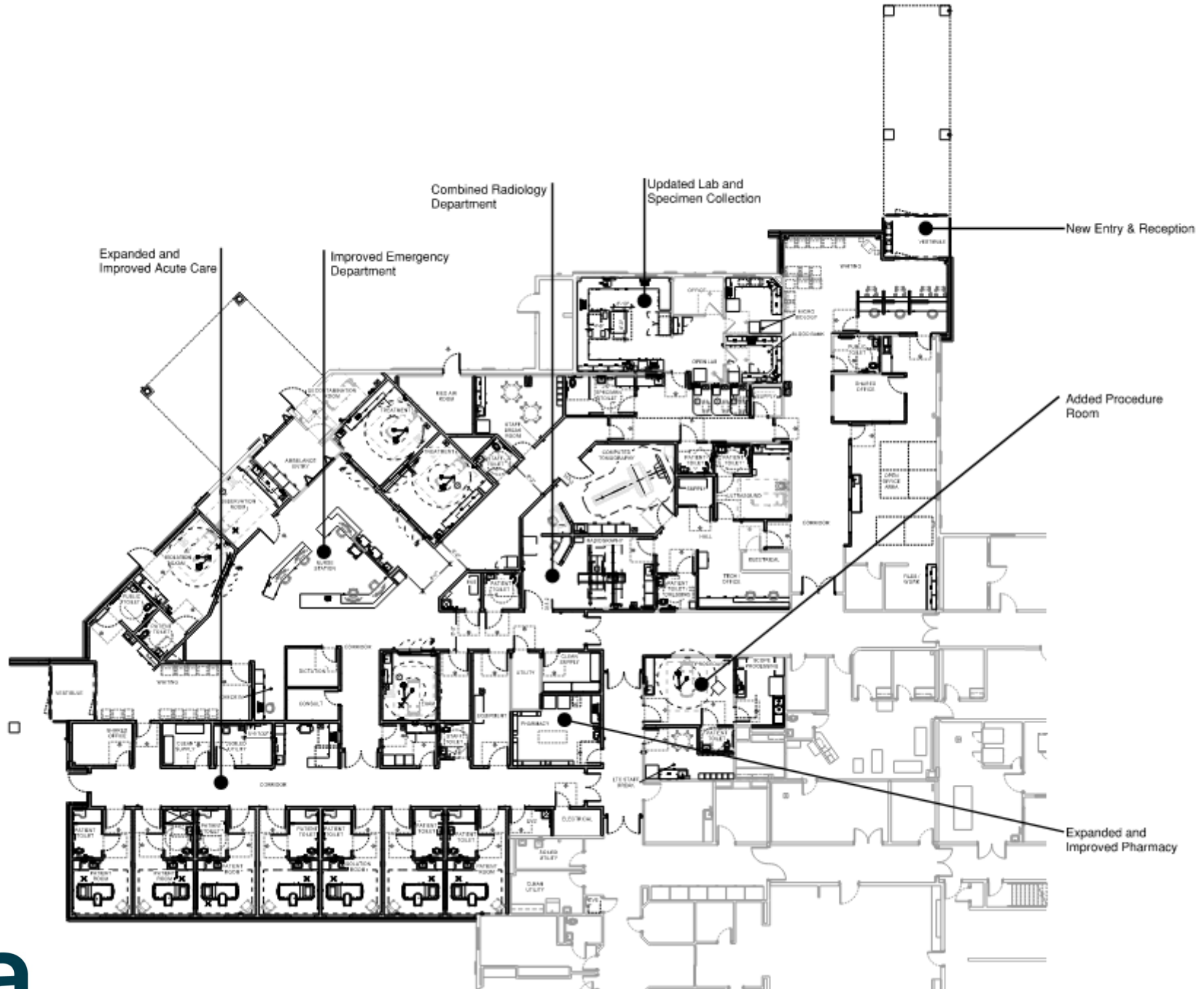
- Hospital occupies new ED and Four Acute Care Rooms.
- Public entry for ED Main Hospital are operational.
- CT remains in place, new room for X-ray is operational.
- Contractor works out of Green area.



Phasing Plan

Phase 3:

- Hospital occupies all new and remodeled space.
- CT is now in the relocated area.
- Contractor finishes remaining corridors and builds the Procedure Room.





Battle Mountain General Hospital
Schematic Design Images

FRONT LOBBY/CHECK-IN
RENDERINGS



ED NURSE STATION
RENDERINGS



PATIENT ROOM
RENDERINGS

