



Molina Healthcare of Nevada

We think of you as Family



Presenter:

Dr. Tracey Green, Chief Medical Officer

Agenda

- **Brief overview of Molina**
- **Behavioral Health Initiatives**
- **Innovations to address Social Determinants of Health and Health Equity**
- **Molina's Impact to Nevada for new Medicaid Contracts**

Vision, Mission and Values

We improve the health and lives of our members by delivering high-quality health care

Molina provides our members
with access to high-quality
healthcare



The mission is equally balanced
among
all those we serve



Advocates



Providers



Members



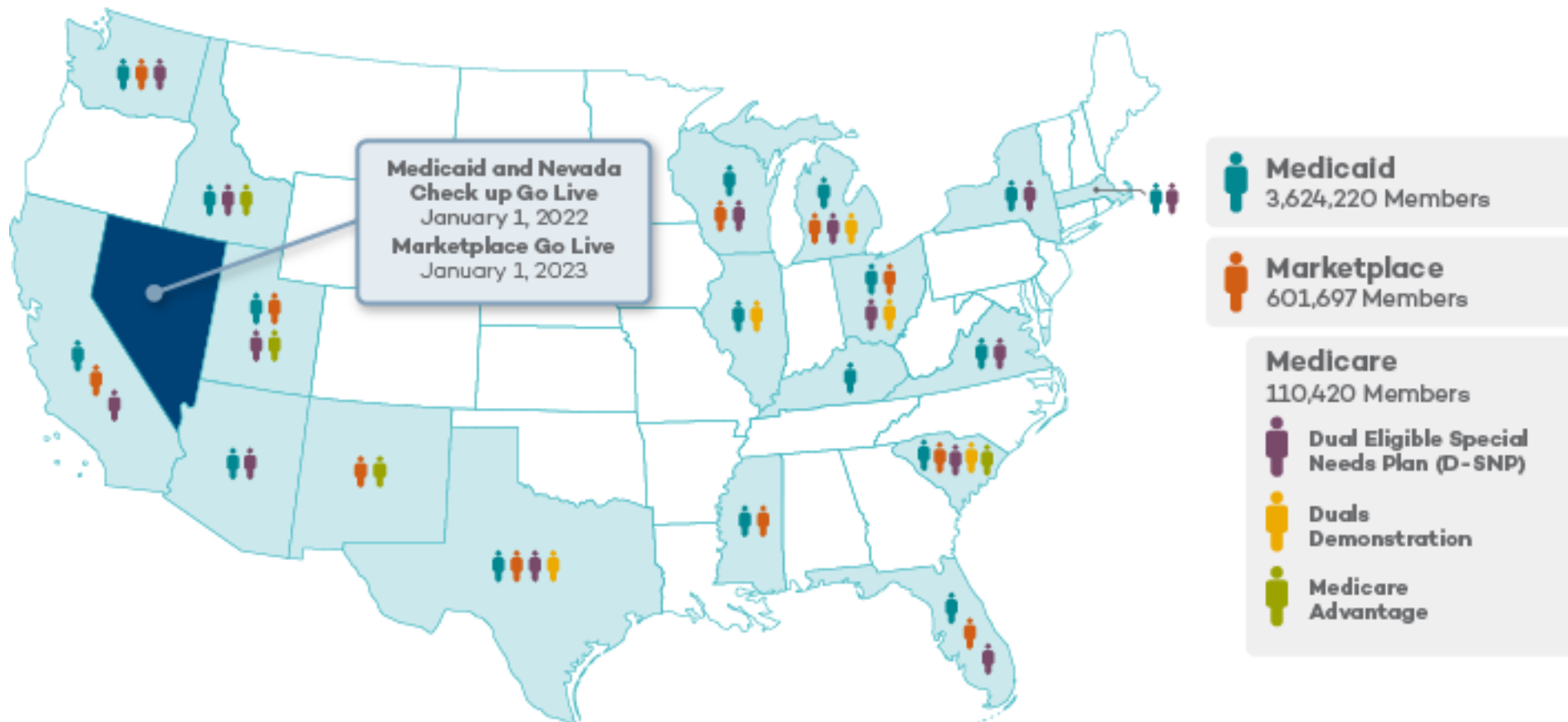
Government
Agencies



Employees

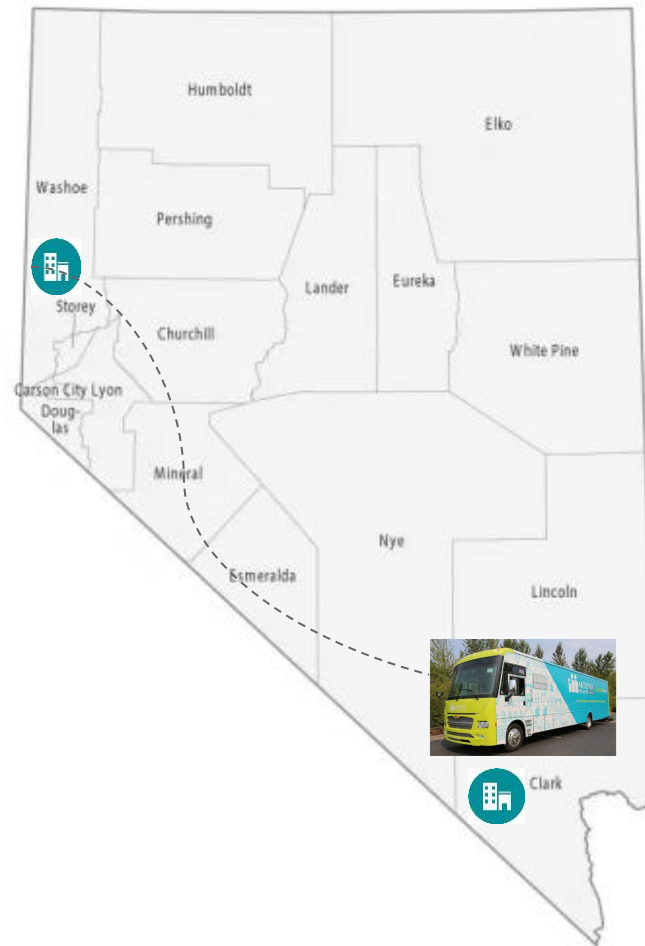
Molina's Footprint

Molina Healthcare was founded in 1980 with a mission to provide quality health care to those who need it most. Today, Molina continues this mission with Medicaid and Health Insurance Marketplace products in 19 states.



Nevada Locations

Offices in Clark, Washoe, Regional Call Center, Molina One-Stop Help Centers and Mobile Unit



Commitment to Quality

Molina Healthcare was founded in 1980 with a mission to provide quality health care to those who need it most. Today, Molina continues this mission with our health plans recognized by the National Committee for Quality Assurance (NCQA), and Medicare plans rated by the Centers for Medicare and Medicaid Services.

NCQA Health Plan Accreditation

13 Medicaid Plans

10 Marketplace Plans

NCQA Voluntary Distinction

Multicultural Healthcare Distinction

11 Medicaid Plans
7 Marketplace Plans

Long Term Services and Supports Distinction
8 Health Plans

Health Plan/Star Ratings

2 Medicaid Plans achieved 4 out of 5 stars

Averaged 3.3 Stars over 14 Plans

1 Medicare Plan achieved 4.5 stars

Averaged 3.5 stars over 11 Plans

Molina Behavioral Health Integrated Model

Molina's BH Model is a non delegated model that is managed in house and focused on whole person care.



NON DELEGATED

Molina does not outsource BH to an outside entity.



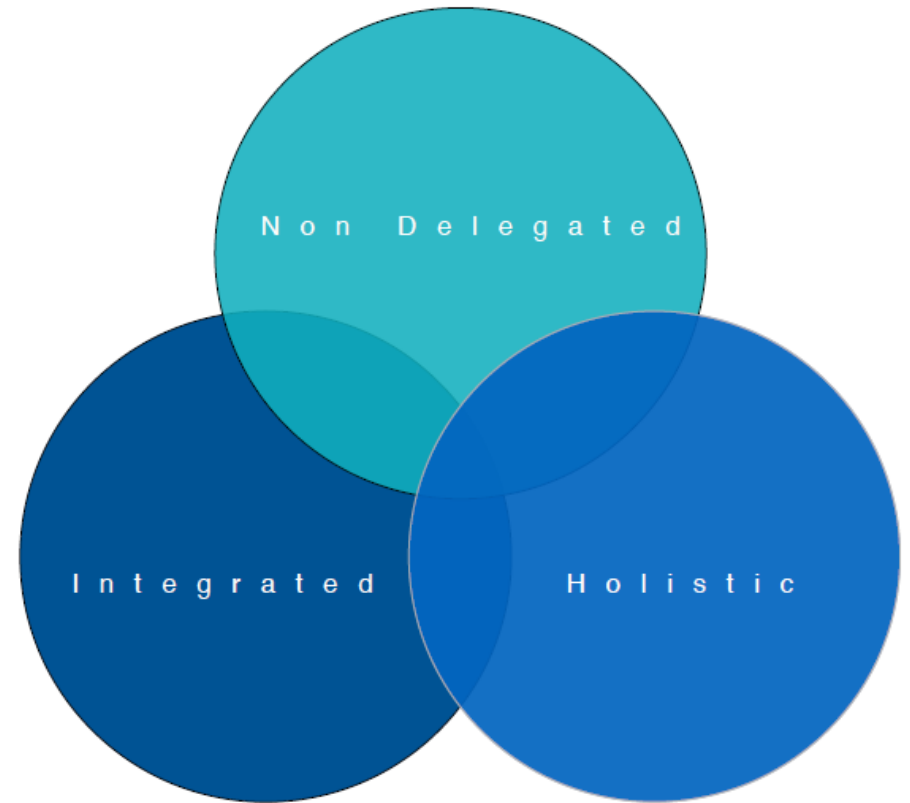
WHOLE PERSON CARE

Molina supports a person centered, evidence based, trauma focused and recovery oriented model.



INTEGRATED PRINCIPLES

- Early Intervention
- Evidence based
- Seamless transition
- Recovery Oriented framework
- Innovation/Technology



Behavioral Health Managed Services

Molina supports a continuum of service that provides a framework for early intervention, treatment, and recovery while promoting collaboration and integration across all settings. The member can self refer without a PCP referral.



Integrated Care Coordination

Integrated UM and CM teams consults and collaborates during multi-specialty rounds.



Molina Healthcare Behavioral Health Provider Support

We partner with all providers to deliver seamless and coordinated BH services.



Learning modules

Evidence based learning tools for providers, members and care givers. Molina has partnered with Psych Hub to develop modules for BH specific topics.



BH Provider Toolkits

Provides online PCP provider resources to manage BH in the Physical Health setting. Provider network teams provide education for authorization and claims processes.



Care Coordination

Offers partnerships with our care coordination and recovery specialists for access and linkage to community resources.

Social Determinants of Health

SDOH impact society at large, are categorized into five domains, and are linked to health outcomes.

The conditions in which people are born, grow, work, live, and age, and the wider set of forces and systems shaping the conditions of daily life.

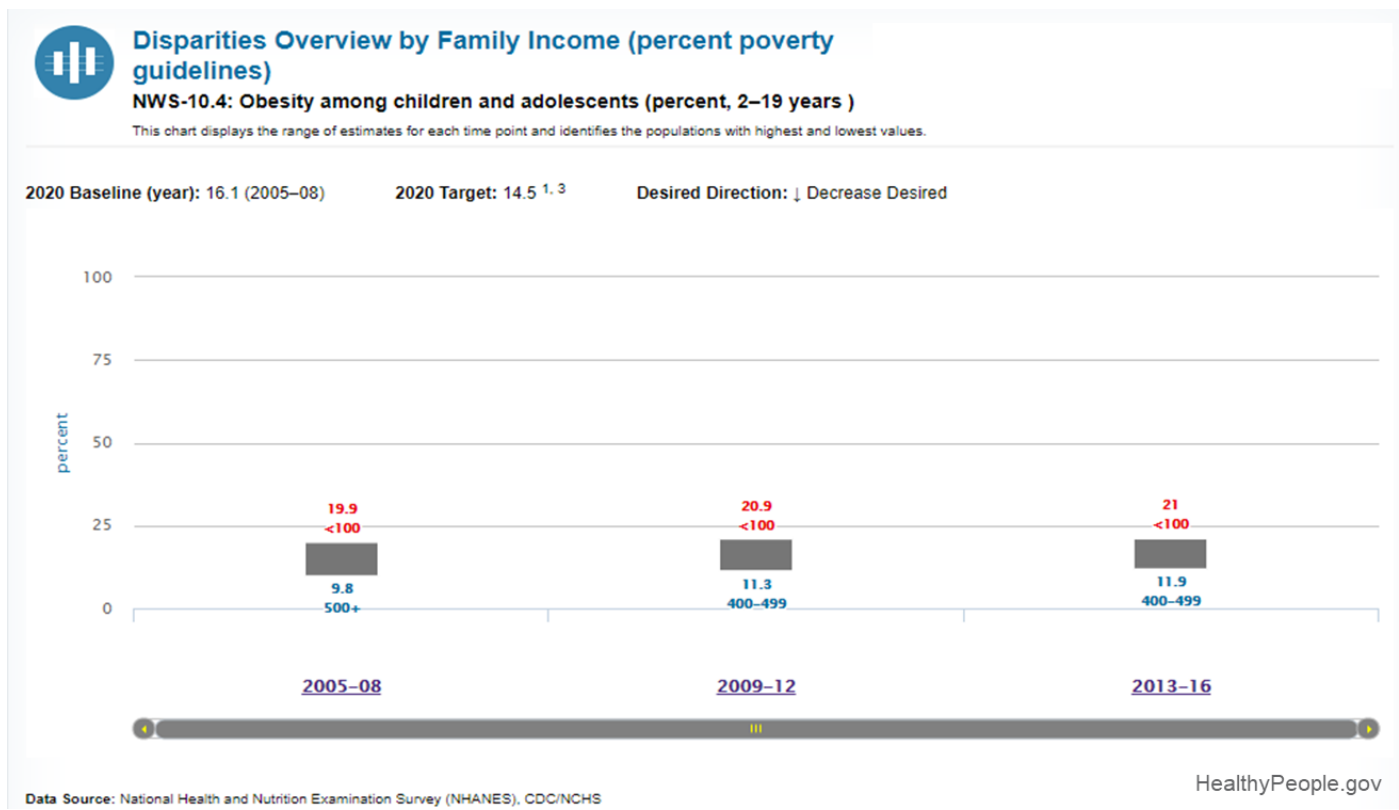
-World Health Organization



HealthyPeople.gov

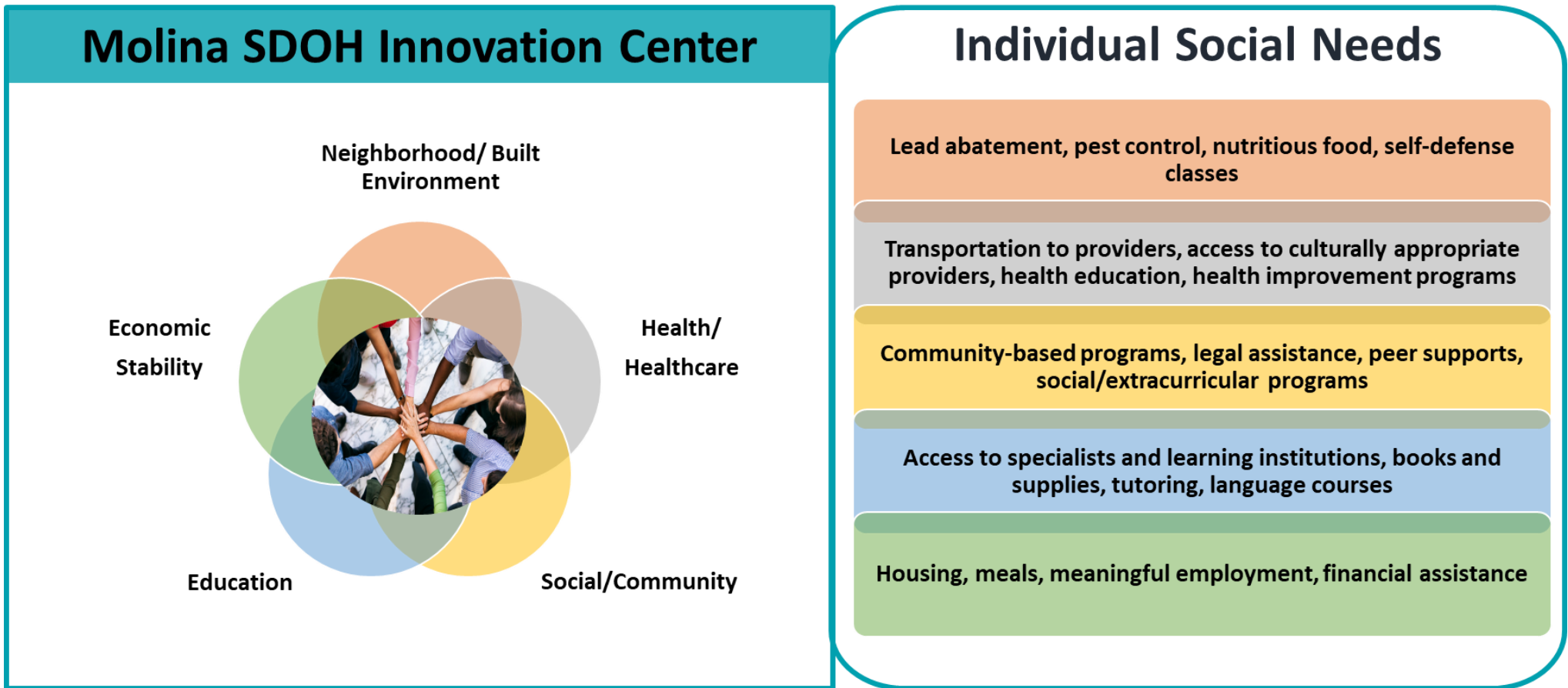
Health Disparities

Health disparities, like the prevalence of obesity amongst impoverished youth, are linked to SDOH that impact communities while risk factors and social needs are specific to populations and individuals.



Molina Social Determinant of Health Innovation Center

We collaborate across SDOH domains to implement innovative solutions that promote health equity, eliminate social risk factors, and meet individual social needs of Molina members to improve health and wellness.



Commitments to Nevada



Molina will generate 100+ new jobs throughout the state, predominantly Clark and Washoe Counties.



Collaborating with Community Partners, such as HOPE for Prisoners, Ready Responders, 100 Black Men of Las Vegas and Crisis Support Services of Nevada (CCSNV) to provide crucial services and promote health equity.



Partnership with Ready Responders for in-home care, hospital transitions and Community Cares program.



Tailored Staffing for Maximum Impact to achieve State goals through the creation of uniquely focused positions such as Justice-involved Liaisons and Access to Care Specialists.



Bringing GrowBaby and Pacify programs to address poor maternal and infant birth outcomes.

Impact to Nevada

- Molina will build Resilient Communities by partnering with 300+ community-based organizations to address the increased need for essential food and supplies, rental and utility assistance, employment support and other needs.
- The MolinaCares Accord Foundation will commit \$3 million over the next four years to address critical priorities, such as the need for equity and fairness in healthcare.
 - \$1 million will fund each of the following:
 - The MolinaCares Health Equity Innovation Fund,
 - Developing an SUD Community of Care
 - Eradicate syphilis in partnership with UNLV, NV Health Centers, Southern NV Health District and the Washoe County Health District.
- Implement the Molina Cares Connections Programs to ensure members receive access to care, provide services to their homes, telehealth or mobile clinics and provide behavioral health support.



Thank you.
We welcome any questions or comments.

