

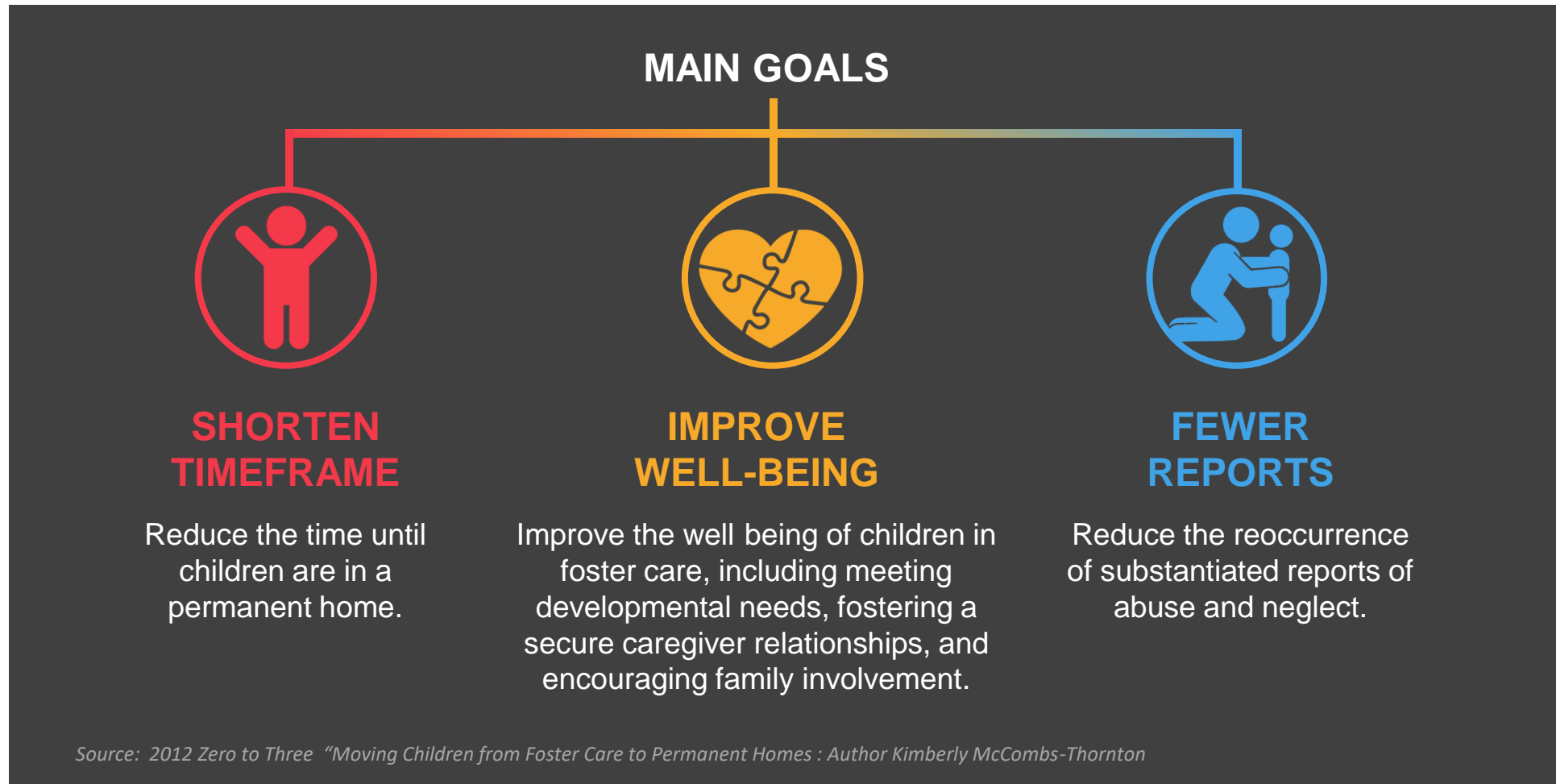


HUMAN SERVICES
AGENCY

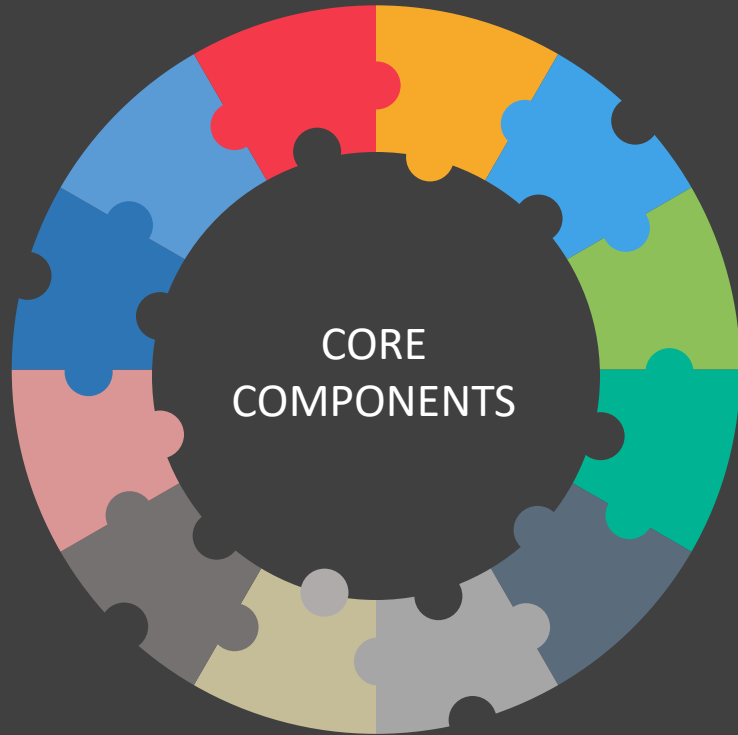
WASHOE COUNTY SAFE BABIES COURT

WHAT IS SAFE BABIES COURT TEAM?

The National Center for Infants, Toddlers, and Families developed a child welfare system change initiative called Zero to Three Safe Babies Court Team. This initiative was designed to address the needs of young children placed in foster care, with an emphasis on the reduction of traumatic experiences.



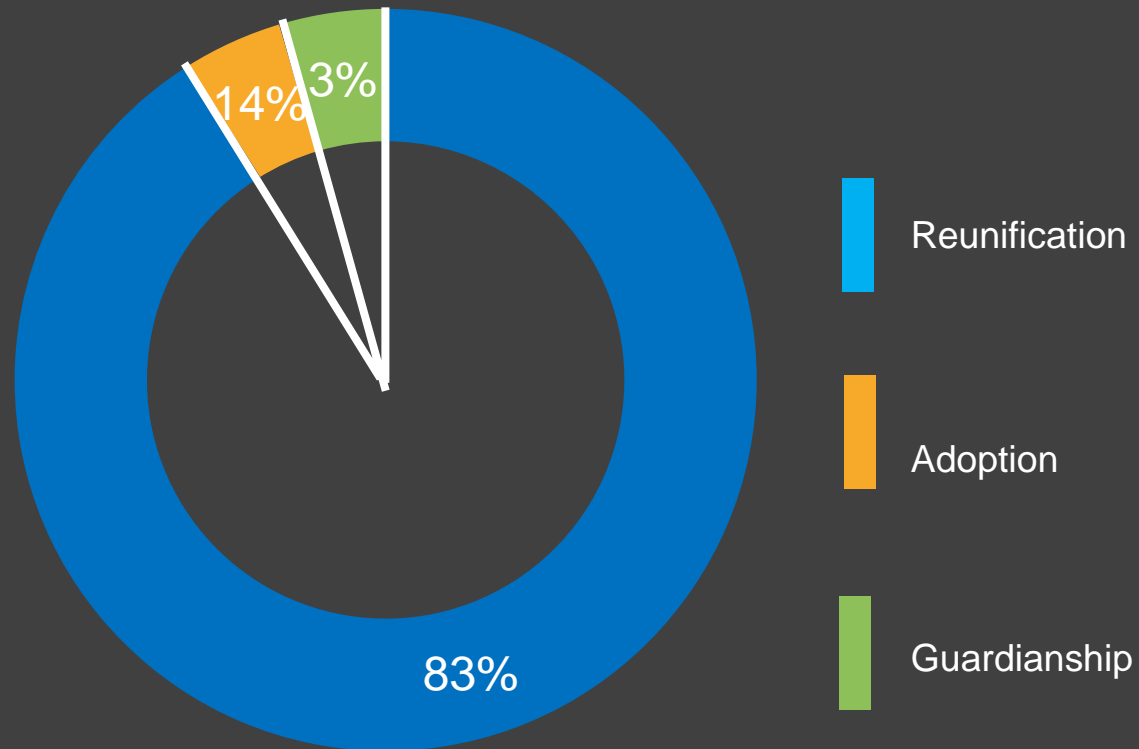
SAFE BABIES COURT TEAM CORE COMPONENTS



- ◆ Judicial Leadership and Child Welfare Leadership
- ◆ Local Community Coordinator
- ◆ Active Community Team
- ◆ Pre/Post-Removal Conferences & Family Team Meetings
- ◆ Continuum of Services for Children and Families
- ◆ Meeting the Parents Where They Are
- ◆ Nurturing Parent's Relationships and building Supports in the Community
- ◆ Frequent, Quality Family Time
- ◆ Concurrent Planning
- ◆ System Commitment to Continuous Learning and Improvement

- ◆ The Safe Babies Court team receives support and the opportunity for specialized training to help identify and provide services for families with infants and toddlers.
- ◆ Families have community coordinators who will work to support individualized case plans in order to support the needs of each family. The community coordinator serves as the primary liaison between the Court and the respective stakeholders that are involved with each individual case.
- ◆ SBCT families have more frequent court hearings that are scheduled every other month to review their progress.
- ◆ SBCT families have monthly Family Team Meetings typically monthly but at minimum every other month to help and support the families with a team approach to address the needs of the parents and children.
- ◆ SBCT families aim at establishing frequent and quality family contact. Families are also encouraged and given an opportunity to participate in program called 2-4-2 books. Resource families/Relative caregivers co-parent with the birth parents and help guide and mentor the birth parents.
- ◆ Referrals and timeliness to services for the children such as early intervention services, early head start home based visiting program, child parent psychotherapy.
- ◆ Referrals for parents to mental health, substance use disorder treatment, parenting and community resources.
- ◆ Concurrent planning for the child to have stable and nurturing relationships.
- ◆ Mentoring, advocacy and support for parents through the Parent Partner.

PERMANENCY PLANS OF CHILDREN IN WASHOE COUNTY SAFE BABIES COURT CLOSED CASES



WASHOE COUNTY SAFE BABIES COURT FAMILIES



Total of 57 Families have been on the SBC docket.

29 Families have had their cases closed

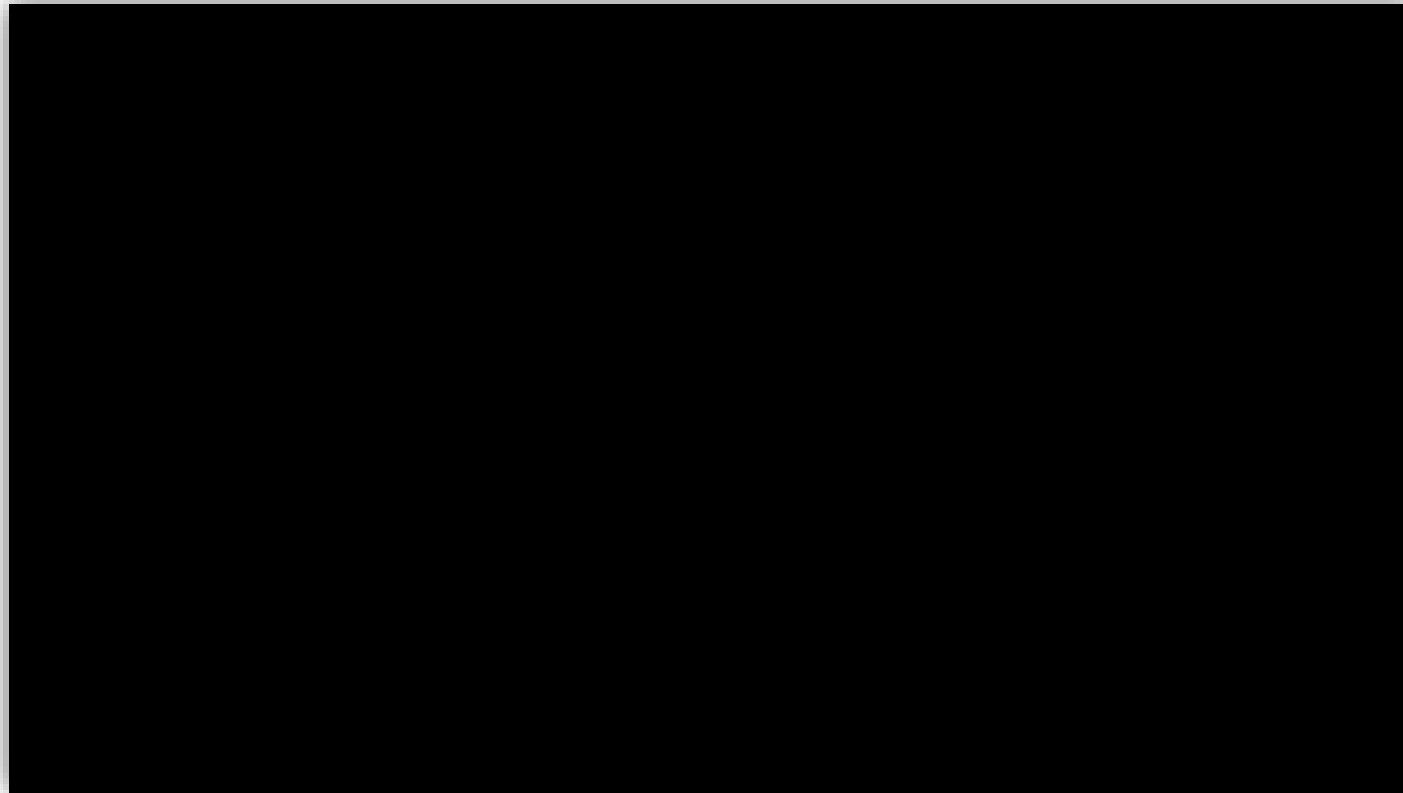


- ❖ 24 Families case closed with 34 children reunifying with their parents
 - 8.8 Average months a child returns home to a parent in SBC
 - 11.5 Average months closure in reunification cases
- ❖ 1 Family's case closed with 1 child in guardianship with relative
 - 17.2 Months to closure in guardianship case
- ❖ 4 Families case closed with 3 children adopted
 - 25.6 Months to closure in adoption case



Currently there are 28 families; 31 children under three when assigned to SBC docket; 1 child over the age of 3; total of 32 children in Safe Babies Court.

SAFE BABIES COURT TEAMS **MOVIE TRAILER**





Lower rates of child abuse and neglect; Reduced racial disparities; Improved child and family health and well-being

Increased coordination of early childhood preventive services; New policies/procedures that ensure equitable services

Attachment relationships are nurtured and protected; Parent protective factors are strengthened; Early childhood development is on a healthy track

IMPACT

Children and families that participate in SBCTs experience better outcomes.
Over time, SBCTs lead to systems improvements and community-wide benefits.

KEY ACTIVITIES

Interdisciplinary, Collaborative, and Proactive Teamwork
-Family Team
-Active Community Team

Enhanced Oversight & Collaborative Problem Solving

Expedited, Appropriate, & Effective Services

Trauma-Responsive Support

Continuous Quality Improvement

LOCAL COMMUNITY

Community partners and leaders

Judge SBCT Community Coordinator

Child welfare agency decision-makers

System stakeholders

A state-level team supports SBCT implementation in states with multiple sites

The National Resource Center for the Infant-Toddler Court Program

Supports SBCT sites and states through technical assistance and training

THE CHALLENGE

- Child welfare and dependency court systems are not designed to address the urgent needs of infants, toddlers and their families
- Risk and protective factors are not adequately addressed