



Amy Roukie, BS/MBA

Director, Growth Strategy

Administrator, CTC

**AN INTEGRATED BEHAVIORAL HEALTH ORGANIZATION**

## OUR MISSION

To create innovative programs and solutions to improve ACCESS to comprehensive care for the underserved, and to reduce overall costs of hospitalizations, while improving patient outcomes.

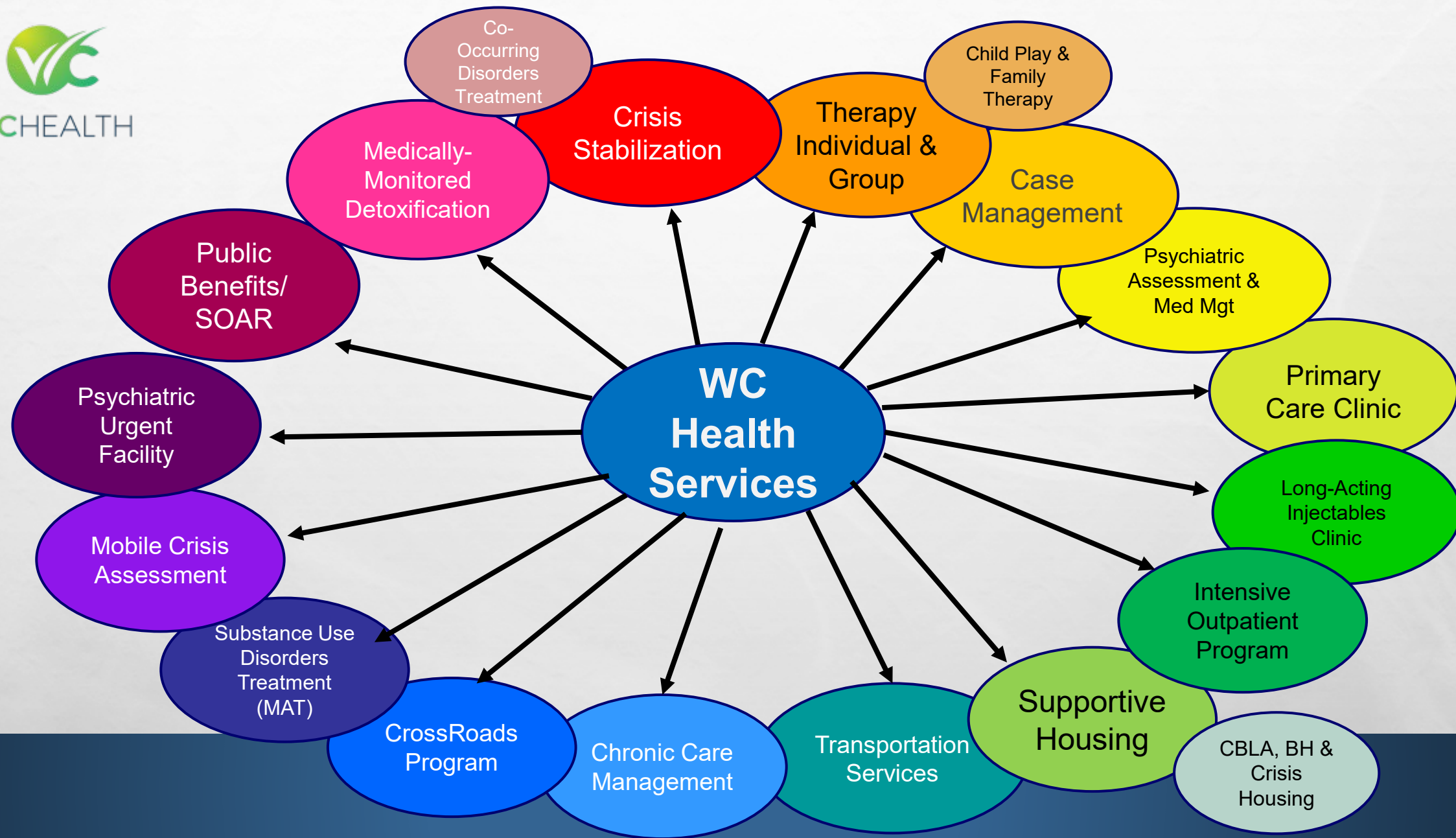
## STRATEGY

To offer services that are flexible, adaptable and ready when needed to address the needs of those individuals and communities we serve.

## WC Health offers:

- Integrated Behavioral Healthcare programs to aid in becoming independent, fully-self sufficient members of the community.
- Our goal is to show the individual a path towards wellness by offering them the best experience and breaking down barriers
- Promotion of positive outcomes for each person, encouraging each person to reach their potential
- Belief in them, and that they can believe in themselves





# THE WC HEALTH CONTINUUM OF CARE

## CTC Services:

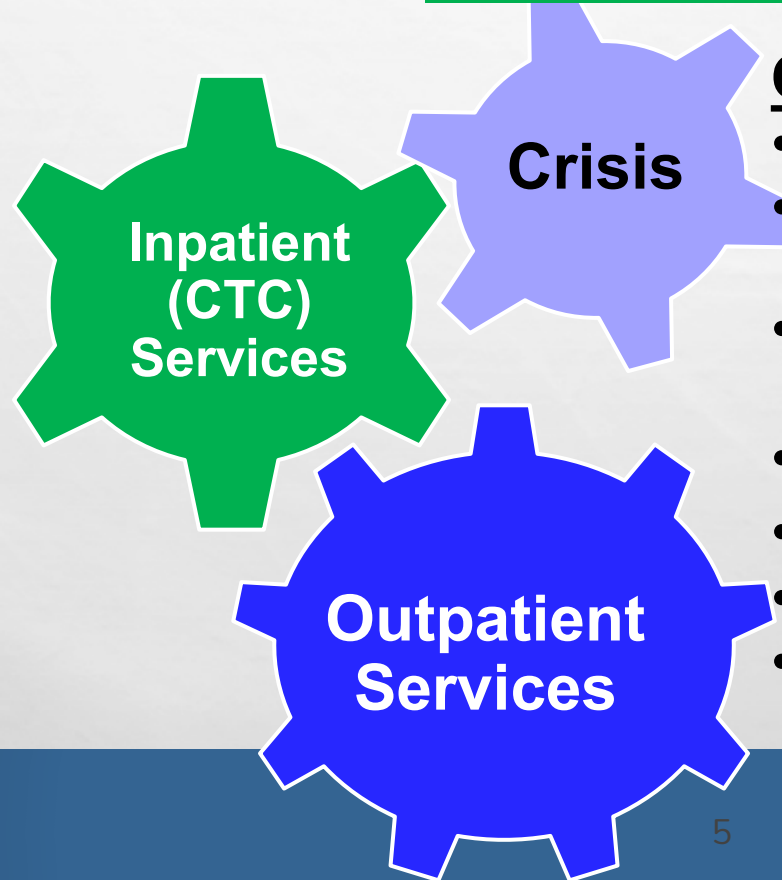
- Medical & Psych Evaluation
- Detoxification- MAT
- Crisis Stabilization
- Psychotherapy
- Case Management
- Linkage to ensure Continuity of Care

## Factors Contributing to Crisis:

- Homelessness
- Psychiatric Instability
- Substance Abuse
- Unmanaged Chronic Health

## Outpatient Services:

- Crisis Stabilization/ PUF
- Supportive Housing (BH/Crisis & CrossRoads)
- Medication Mgt (PSYCH/MED/MAT/LAI)
- Outpatient (Individual & Group)
- Transportation
- Primary Care
- Intensive Case Mgt, (30 days & beyond)



# Crisis Cycle



- EMS Response- (Police /Fire)
- Mobile Crisis Team Assessment
- Utilize the PUF
- WC Health transports to CTC
- Transport to the Emergency Room via Ambulance
- CTC stabilizes & links to Outpatient services
- Hospital stabilizes & refers to CTC



# WC HEALTH METRICS

- Reduces ER overcrowding, unnecessary admissions and readmissions to hospitals which will mitigate costs.
- Arrests for CPC, (Civil Protective Custody) and other non-violent and nuisance complaints, will be reduced, saving law enforcement time and resources.
- Measurable outcomes will provide evidence of improvement in the management of this population.
- Return on Investment- will be evident as this population is managed on an improved level and for long periods of time.

# CONTACT INFORMATION

AMY ROUKIE, DIRECTOR

(775) 571-0281

[A.ROUKIE@WC-HEALTH.COM](mailto:A.ROUKIE@WC-HEALTH.COM)

8

