

Supportive Housing Models

Rural Regional Behavioral Health Policy Board,
June 22, 2022



CSH is a touchstone for new ideas and best practices, a collaborative and pragmatic community partner, and an influential advocate for supportive housing



TRAINING AND
EDUCATION



LENDING

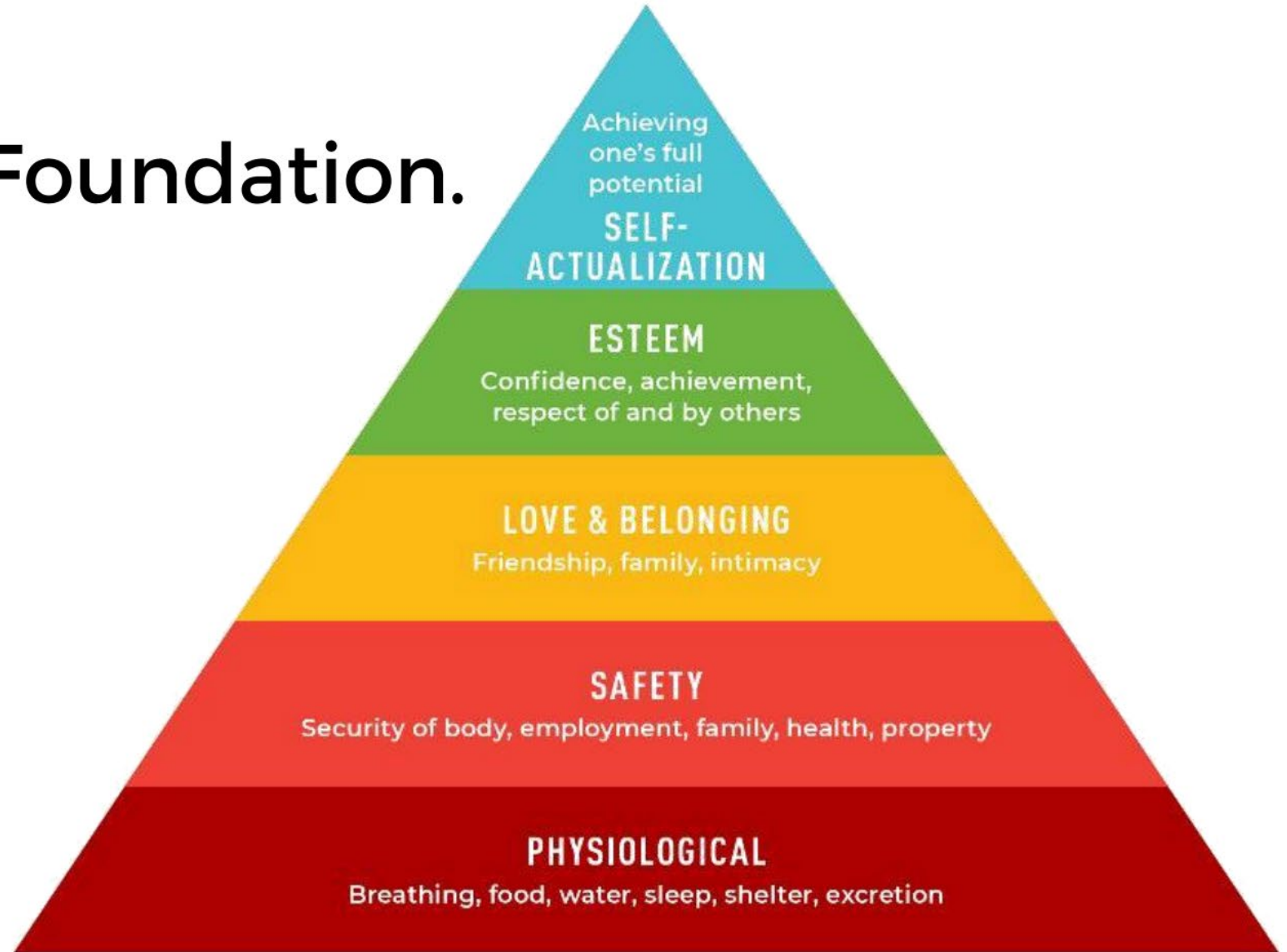


POLICY REFORM



CONSULTING &
TECHNICAL
ASSISTANCE


Housing First. Housing as a Foundation.



Maslow's Hierarchy of Needs

© All rights reserved. No utilization or reproduction of this material is allowed without the written permission of CSH.

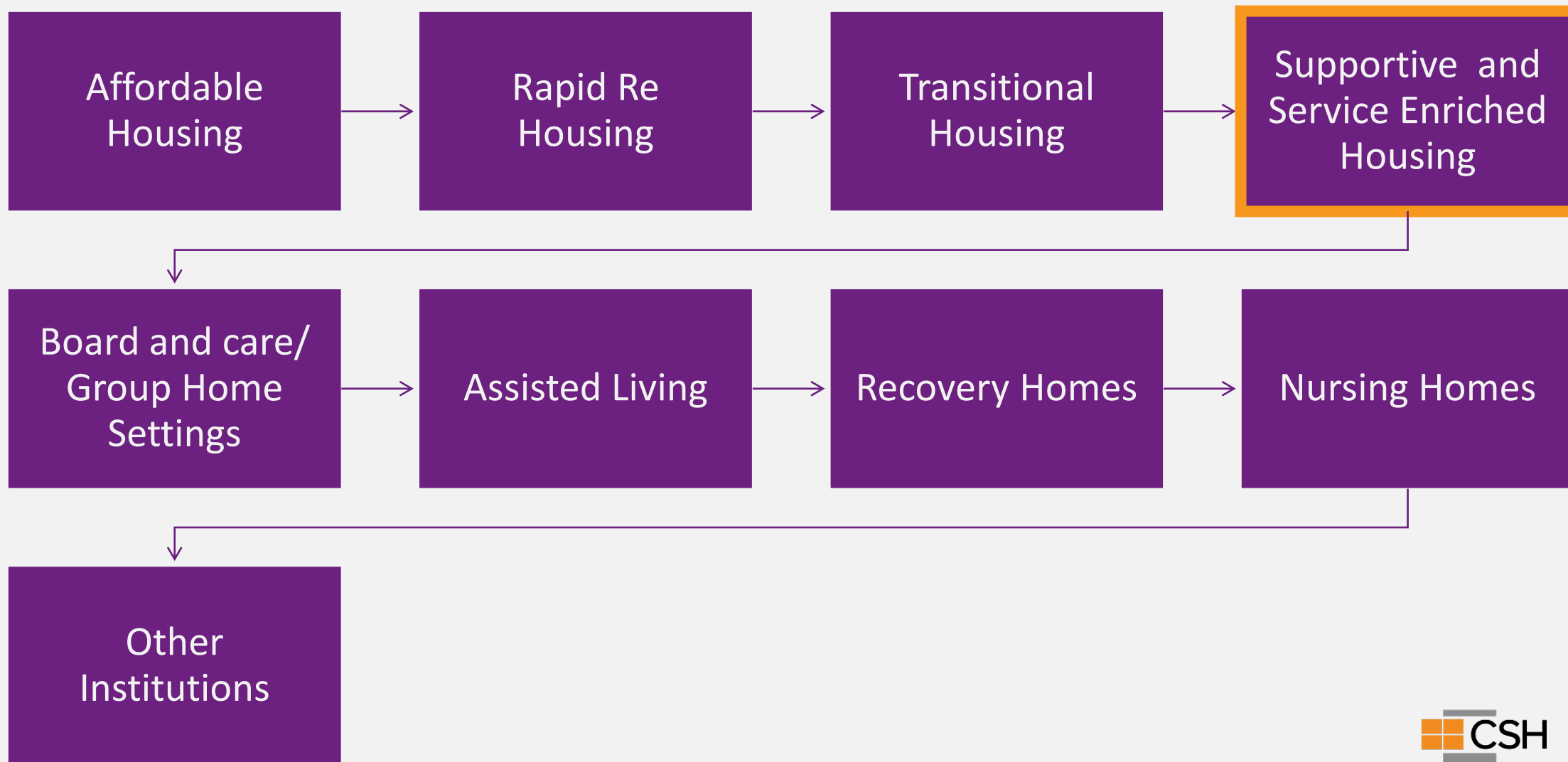




What is Supportive Housing?

Supportive housing combines affordable housing with services that help people who face the most complex challenges to live with stability, autonomy and dignity.

Continuum of Housing Models



Supportive Housing is for People Who:

Are experiencing chronic homelessness.

Cycle through institutional and emergency systems and are at risk of long-term homelessness.

Are living with intellectual and developmental disabilities

Are living with chronic health conditions

Are being discharged from institutions and systems of care.

Without housing, cannot access and make effective use of treatment and supportive services.



Supportive Housing is the Solution



Housing:
Affordable
Permanent
Independent

Support:
Flexible
Voluntary
Tenant-centered
Coordinated Services

Ideal Tenant Journey

Pre-tenancy

- Outreach and in reach
- Building rapport
- Care coordination



Pre-tenancy

- Referrals to services and programs



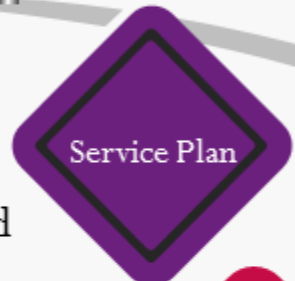
Pre-tenancy

- Conducting a screening and assessment of housing preferences/ barriers related to successful tenancy



Pre-tenancy

- Developing an individualized housing support plan based on assessment
- Assisting with rent subsidy application/ certification and housing application processes
- Developing an individualized housing support crisis plan

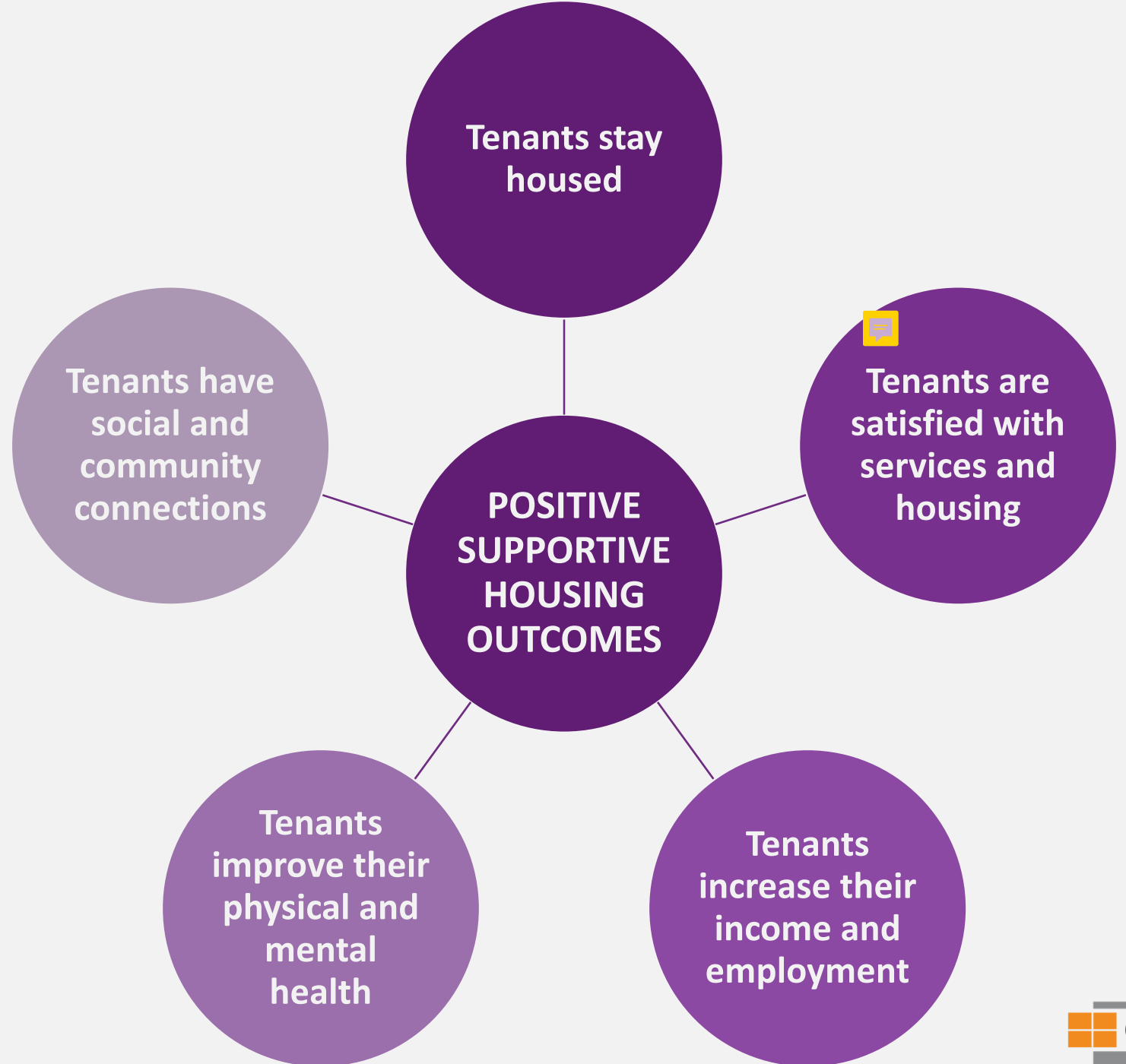


Tenancy Sustaining

- Assisting with housing search process
- Identifying resources to cover start-up expenses
- Ensuring housing unit is safe/ready for move-in
- Providing early identification/ intervention for behaviors that may jeopardize housing
- Education/ training on the role, rights and responsibilities of the tenant and landlord
- Coaching on relationships with landlords/ property managers
- Assisting in resolving disputes with landlords and/ or neighbors
- Advocacy/ linkage with resources to prevent eviction
- Assisting with the housing recertification process
- Coordinating with tenant to review/ update/ modify housing support and crisis plan



Quality Practices Result in Positive Outcomes



CAPITAL - Building the development finance structure

- Housing Trust Fund
- Affordable Housing Fund
- HOME and HOME-ARP
- LIHTCs
- CDBG and CDBG-CV

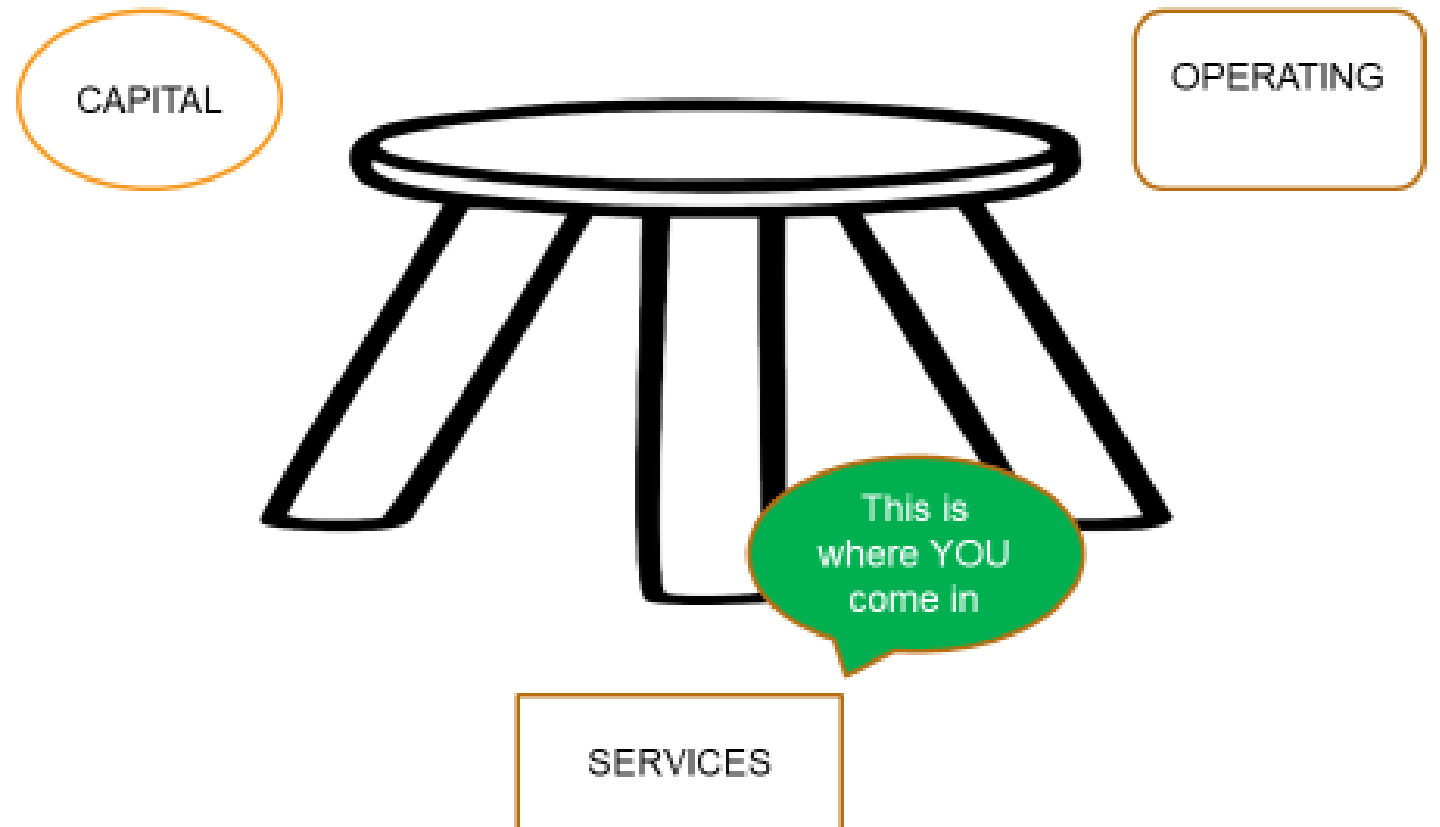
SERVICES – From Affordable to Supportive

- SAMHSA funds
- Medicaid Benefit
- ARP

OPERATING – Keeping the housing deeply affordable to the lowest income persons

- Project Based Rental Assistance
- Housing Choice Vouchers
- Resident payments/Rent

The 3 legged stool of Supportive Housing Financing



© All rights reserved. No utilization or reproduction of this material is allowed without the written permission of CSH.



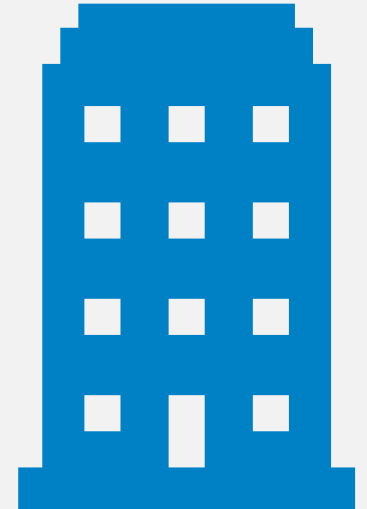
It Costs the Same to Provide:



=



=



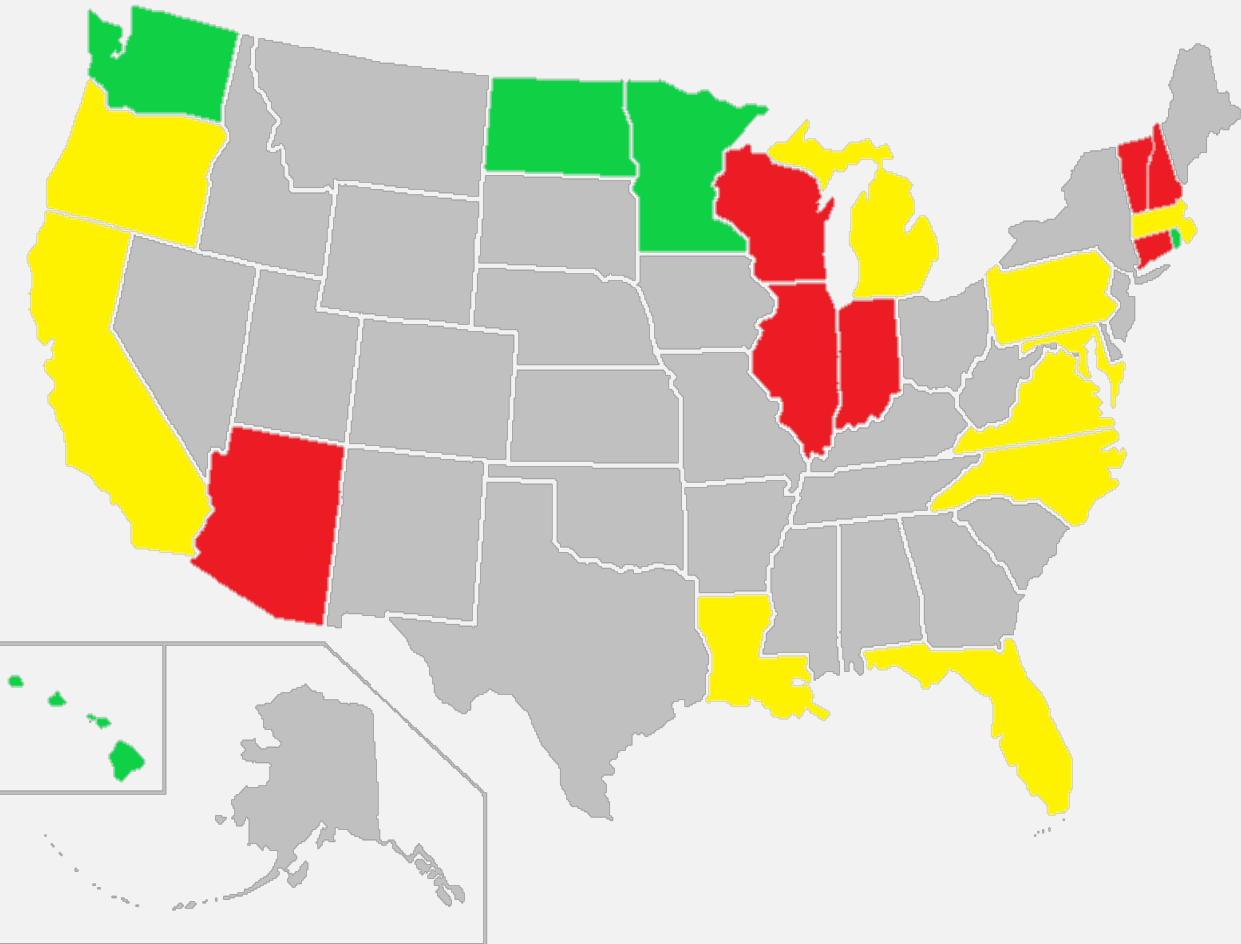
3 Days at UMC

3 Months at CCDC

One Year of
Supportive Housing



A piece of the solution: State Medicaid Programs Covering Tenancy Support Services?



YES, statewide

- Via 1115: Washington, Hawaii, Rhode Island
- Via 1915(i): Minnesota, North Dakota, Connecticut

Yes, with limits on

- California, Florida, Maryland
(Geography)
- LA, MI, OR, PA, VA
(Populations)
- Massachusetts
(if you can get a contract with an ACO)
- North Carolina- as pilots

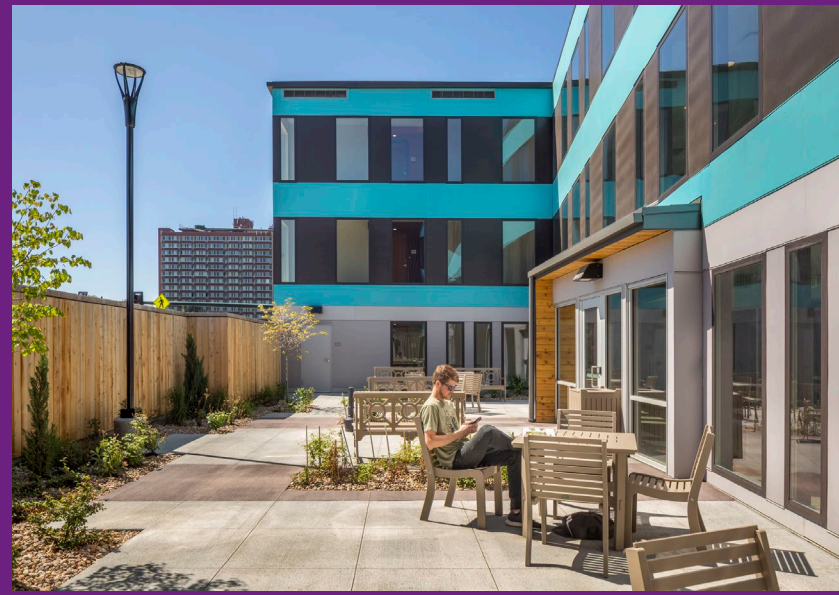
NOT YET

- 1115s: AZ, VT
- 1915(i): DC, IL, NH, WI
- ARPA HCBS plans: CA, CO, IN

Sanderson Apartments

- **Permanent Supportive Apartments Homes**
- Provides a safe, open and inviting environment that minimizes the effects of trauma, avoids any sense of confinement, and ensures that residents feel safe.
- Visit: [Permanent Supportive Housing \(mhcd.org\)](https://mhcd.org)





LOOK AND FEEL OPEN BUT AT THE SAME TIME BE SECURE

- (INDIRECT OBSERVATION)

Blackburn Center - Portland OR

Mixed Use Model: Integrated FQHC, Behavioral Health, Respite Care



Project Details:

- Fully integrated FQHC, BH and Housing
- 51 medical respite; 10 palliative care
- 80 Transitional; 34 PSH focus on SUD programs

Ownership

- Central City Concern, experienced supportive housing provider and FQHC

Financing

- Total Development Costs: \$52 million
- Financing: NMTC, Housing is Health/Health System grant
- Local rent subsidies for some of the units;
- Medicaid Managed Care for respite units, HC revenues and 330 Grant



Ways to Get Involved!

Support advocacy efforts for Supportive Housing

Advocate for TSS and other funding for support services

Host a Series of Conversations

Activate your Network to Lean into the Conversation

Thank You

Contact Details:

Ariana Saunders at

Ariana.Saunders@csh.org