

Nevada Dementia Care Specialist Proposal

**Presentation to the Southern Nevada Regional
Behavioral Health Policy Board**

August 25, 2022

alzheimer's  association®

Overview

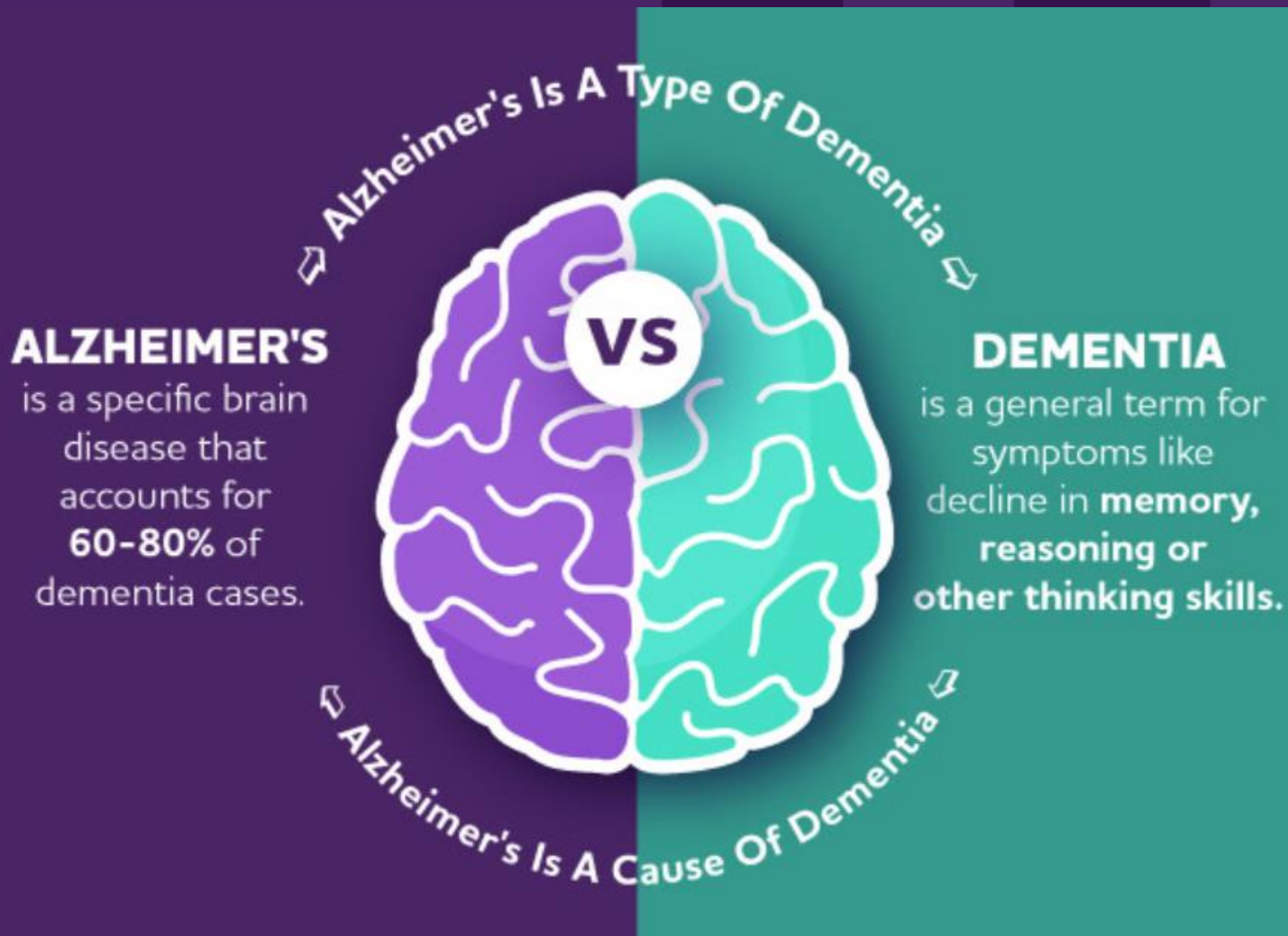
- Facts and Figures – The Problem
- Wisconsin DCS Program
- Nevada Proposal
- Questions

Facts and Figures

Source: 2021 Alzheimer's Association Facts and Figures

alzheimer's  association®

What is the difference between Alzheimer's disease and dementia??





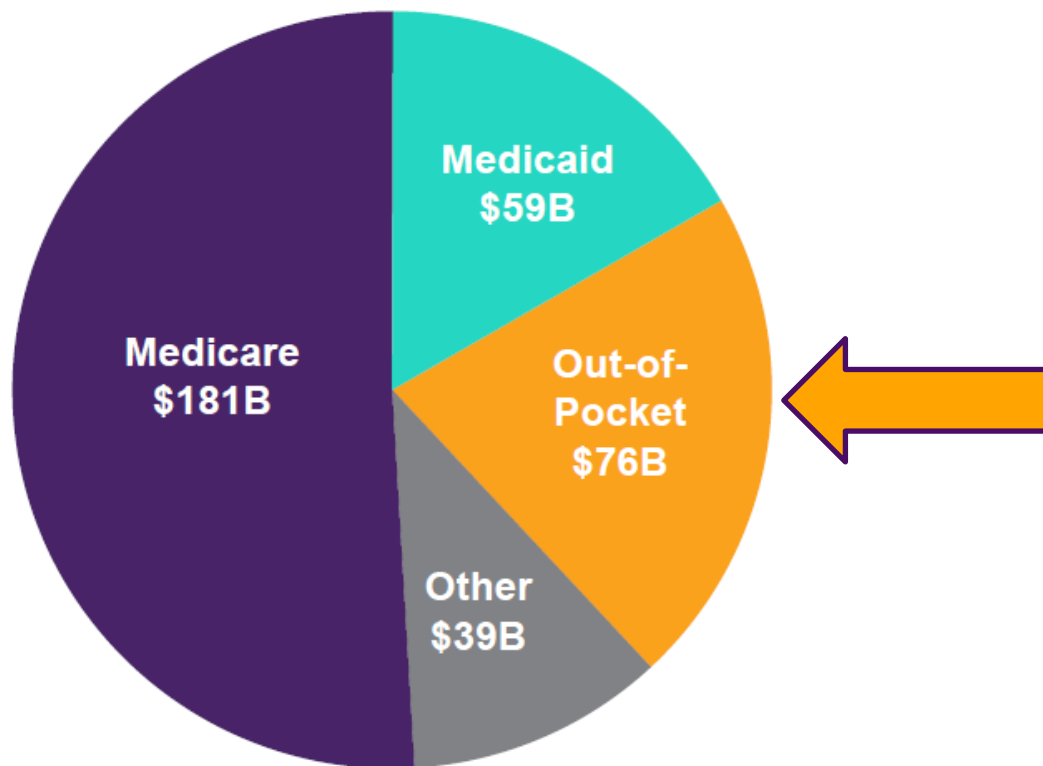
More than
6 million Americans
are living with
Alzheimer's.



1 in 3 seniors dies
with **Alzheimer's** or
another dementia.

Out-of-Pocket Cost of Alzheimer's Disease

2021 Costs of Alzheimer's = \$355 Billion





NEVADA

ALZHEIMER'S STATISTICS



PREVALENCE

65+ NUMBER OF PEOPLE AGED 65 AND OLDER WITH ALZHEIMER'S

Year	TOTAL	ESTIMATED % CHANGE
2020	49,000	30.6%
2025	64,000	



MORTALITY



DEMENTIA DEATHS DURING THE COVID-19 PANDEMIC

486 more deaths than expected from dementia in 2020 **29.7%** higher than average

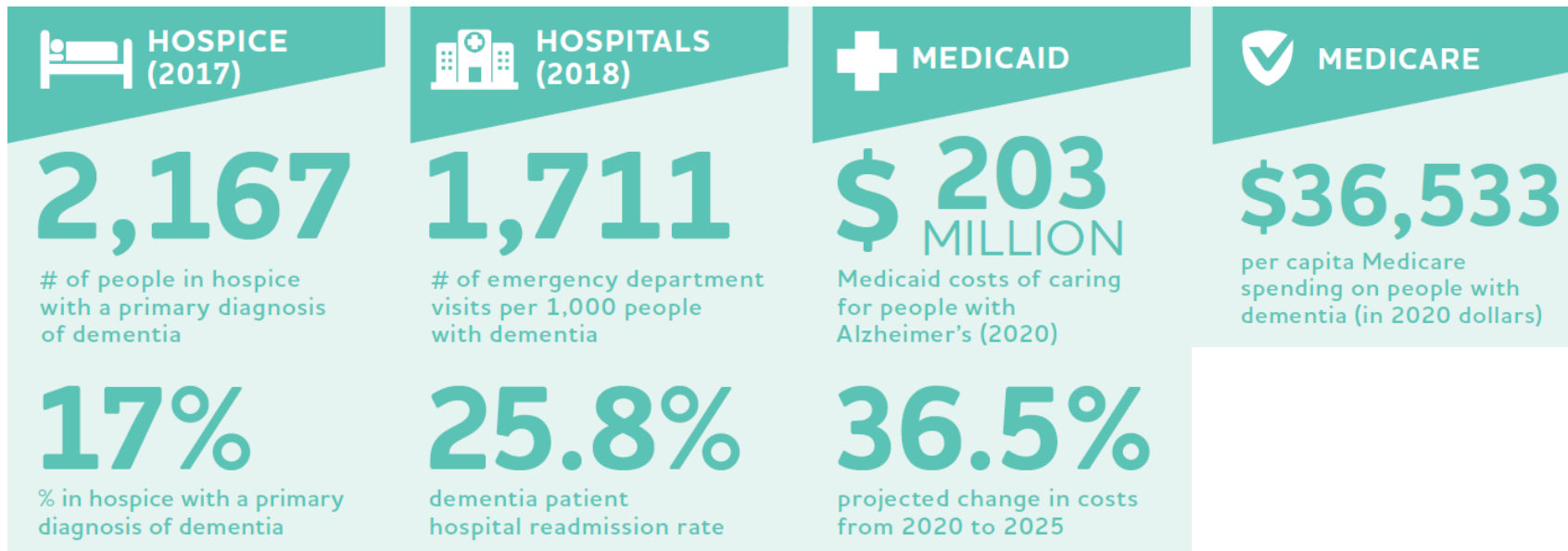
OF DEATHS FROM ALZHEIMER'S DISEASE (2019)

678

247.7% increase in Alzheimer's deaths since 2000

Source: 2021 Alzheimer's Association Facts and Figures

Cost of Alzheimer's Disease in Nevada



Source: 2021 Alzheimer's Association Facts and Figures

Caregiving in Nevada



CAREGIVING
(2020)

48,000

Number of Caregivers

78,000,000

Total Hours of Unpaid Care

\$1,334,000,000

Total Value of Unpaid Care

80.2%

% of caregivers with
chronic health conditions

18.3%

% of caregivers
with depression

10th

highest average number of hours per week per caregiver

Source: 2021 Alzheimer's Association Facts and Figures

Subjective Cognitive Decline in Nevada

1 in 7

people aged 45 years and older are experiencing

Subjective Cognitive Decline



SCD is self-reported **MEMORY PROBLEMS** that have been **GETTING WORSE** over the past year.

82% of people with SCD have at least one chronic condition



Source: 2019 Behavioral Risk Factor Surveillance System (BRFSS)

Subjective Cognitive Decline in Nevada (continued)



27% of people with SCD had to give up day-to-day activities

less than half of people with SCD have discussed their symptoms with a healthcare provider



nearly a quarter of people with SCD say it interfered with social activities, work, or volunteering



28% of people with SCD need help with household tasks



Source: 2019 Behavioral Risk Factor Surveillance System (BRFSS)

Wisconsin DCS Program

alzheimer's  association®

What is a Dementia Care Specialist?

- DCSs work to improve the quality of life for people with the condition who are living at home. They also support caregivers.
- Usually Masters or Bachelors Level Social Workers (Not LCSWs).
- Based in county or non-profit entities within the regions they serve.
- They support:
 - Individuals with dementia;
 - Care partners and families
 - Communities

DCS “Pillars”

Scope of work for DCSs in Wisconsin include:

1. Train staff at the Aging and Disability Resource Centers (ADRCs) and other county and municipal offices to assist local systems to become dementia-capable.
2. Help communities become dementia-friendly where people with dementia can remain active and safe, and caregivers can feel supported.
3. Provide education and support to people with memory concerns or dementia, and their families, to allow them to live at home safely.

DCS Role in Crisis Planning and Response

- Provide training on dementia, and how to work effectively with a person who has dementia in a crisis situation, including law enforcement, EMS, fire and rescue teams, and APS workers.
- Accompany adult protective services workers on home visits when dementia is suspected to be involved in the case.
- Consult with crisis workers and other emergency responders on individual cases.
- Consult with or serve on local coalitions or task forces that are working to improve local systemic responses for people with dementia.

Other DCS Duties

- Work with all individuals living with dementia and their families to create individual care plans and crisis prevention and preparation plans.
- Collaborate with other Aging and Disability Programs.
- Provide training to non-medical staff in clinical settings.
- Train volunteers to conduct community dementia screenings.

Nevada DCS Proposal

alzheimer's  association®

Dementia Care Specialist (DCS) Program

- Based on work out of Wisconsin.
- Uses trained DCSs and involves: Crisis intervention; crisis stabilization and long-term support.
- The DCS program is also proactive, providing training to make communities more dementia-friendly and dementia-capable.
- Provides dementia screening and referrals.

Proposed NV DCS Program Structure and Funding

- Legislative request to fund NV DHHS for 3 DCS positions.
- Funding released via RFP to eligible county and non-profit entities.
- Training and administrative oversight provided by the UNR Dementia, Engagement, Education and Research Program.
- Program evaluation conducted by the UNR Sanford Center on Aging.

Two-Year Funding Request

	Year 1	Year 2	Total
State Staff	\$13,000	\$13,000	\$26,000
DCS Staff	\$204,000	\$204,000	\$408,000
Operating	\$1,452	\$1,452	\$2,904
Contractual	\$50,000	\$45,000	\$95,000
Total	\$268,452	\$263,452	\$531,904

Questions

Contact Information

Charles Duarte | Nevada Director of Public Policy and Advocacy | Alzheimer's Association | 639 Isbell Road, #240, Reno, NV 89509 | (775.241.1501, x1234 | Cell 775.781.1603 | 24/7 Helpline 800.272.3900 | ccduarte@alz.org | alz.org/Nevada