

1

CrossRoads is a Washoe County Human Services Agency (HSA) funded & lead initiative providing a tiered/modified housing first approach, that focuses on identifying, intervening and stabilizing traditionally high complexity homeless or near homeless individuals through effective programming, services, and community collaboration.



HUMAN SERVICES
AGENCY

2

CROSSROADS PROGRAMS

MEN'S MAIN (110 TOTAL BEDS)

WOMEN'S (42 TOTAL BEDS)

-> **RIVER HOUSE (24 BEDS)**

-> **HOPE HOUSE (11 BEDS)**

-> **JANE AUBREY HOUSE (7 BEDS)**

WOMEN & CHILDREN (24 TOTAL BEDS)

-> **HOPE 1ST COTTAGES**

CROSSROADS OFF-CAMPUS (CROC)

HOPE HOME TAY PROGRAM (50 BEDS)

3

CROSSROADS PRIMARY ELEMENTS



Alcohol and Drug Free Supportive Community

- Experiential learning environment.
- Phased/tiered approach encompassing gradual increases in privileges/independence and responsibilities.
- Peer lead support services.
 - leisure and recreational activities.
 - mutual-self help meetings.
 - Life skill development seminars & classes.
 - Transportation
 - On-site Preliminary Breath & Urine Analysis screening.



Intensive and Targeted Case Management

- Development of the participant's Master Case Plan from entry through continuing care.
 - Encompassing direct, strength-based, change- focused, and individualized interventions and service planning.
- Serving in the role of '*participant navigator*' by directly brokering access to needed resources & services.
- Proactive case collaboration with contracted & community mental health & addiction treatment service providers.



Life Skills/ Life Management Programming

- Employment & career readiness evaluation.
- Structured programs to address educational & vocational needed.
- Job skill development, placement & continued employment support.
- Budgeting, time & money management courses.
- Weekly peer-facilitated seminars & classes on topics ranging from shopping & cooking to how to offer support to others.



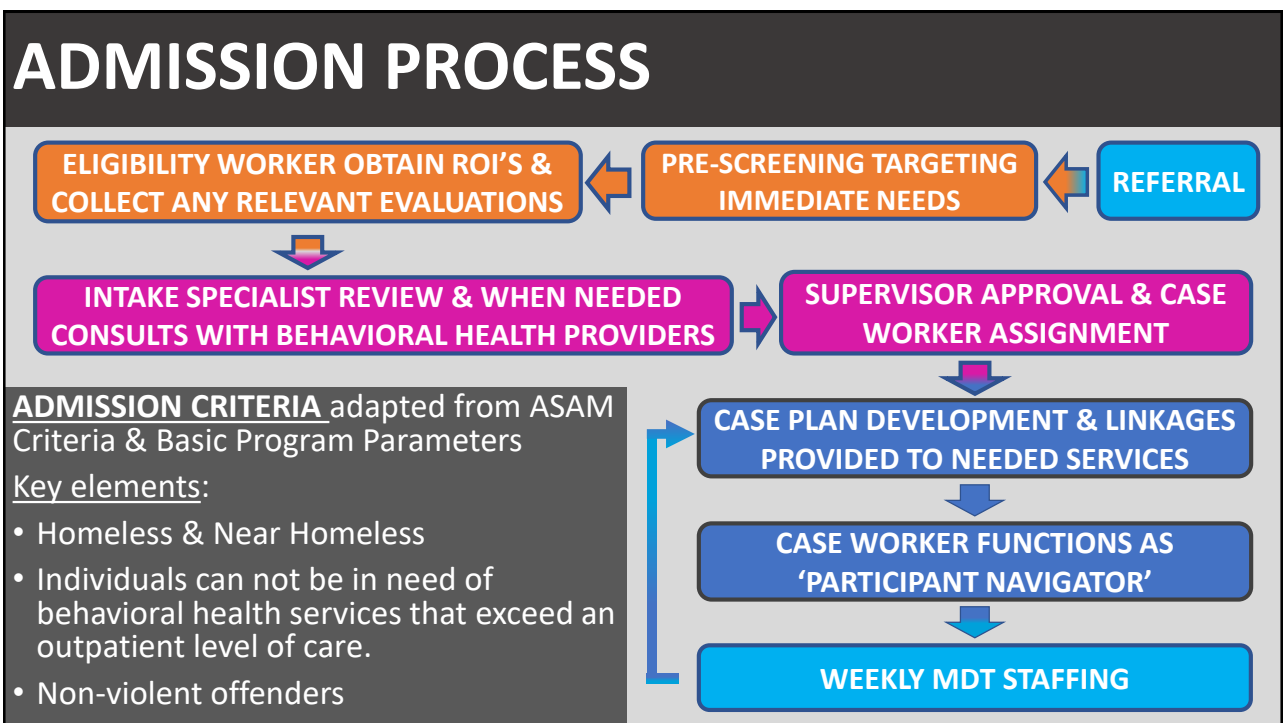
Linkage to Medical & Behavioral Health Services

- Comprehensive Addiction & Mental Health Evaluation.
- On and off-site Addiction & Mental Health individual and family therapies.
- A menu of group counseling services.
 - Psychoeducational, skill-building, and CBT groups.
 - Clinician facilitated interpersonal process & targeted psychotherapy groups.
- A full-time on-site community Registered Nurse.

4



5



6

MEN'S PROGRAM



- Contracted by CCSNN for all aspects of the program
 - CCSNN Case Management Staff
 - CCSNN Supportive Living Community Staffing
 - *HSA Oversight*
- Contact: (775) 785-4006
- Email: crossroads@washoecounty.us

7

WOMEN'S, WOMEN & CHILDREN'S PROGRAM, OFF-CAMPUS (CROC)



- Collaborative Delivery Approach
 - HSA- Case Management Staff
 - AVHM Supportive Living Community Staffing
 - *HSA Oversight*
- Contact: (775) 328-2700
- Email: crossroads@washoecounty.us

8

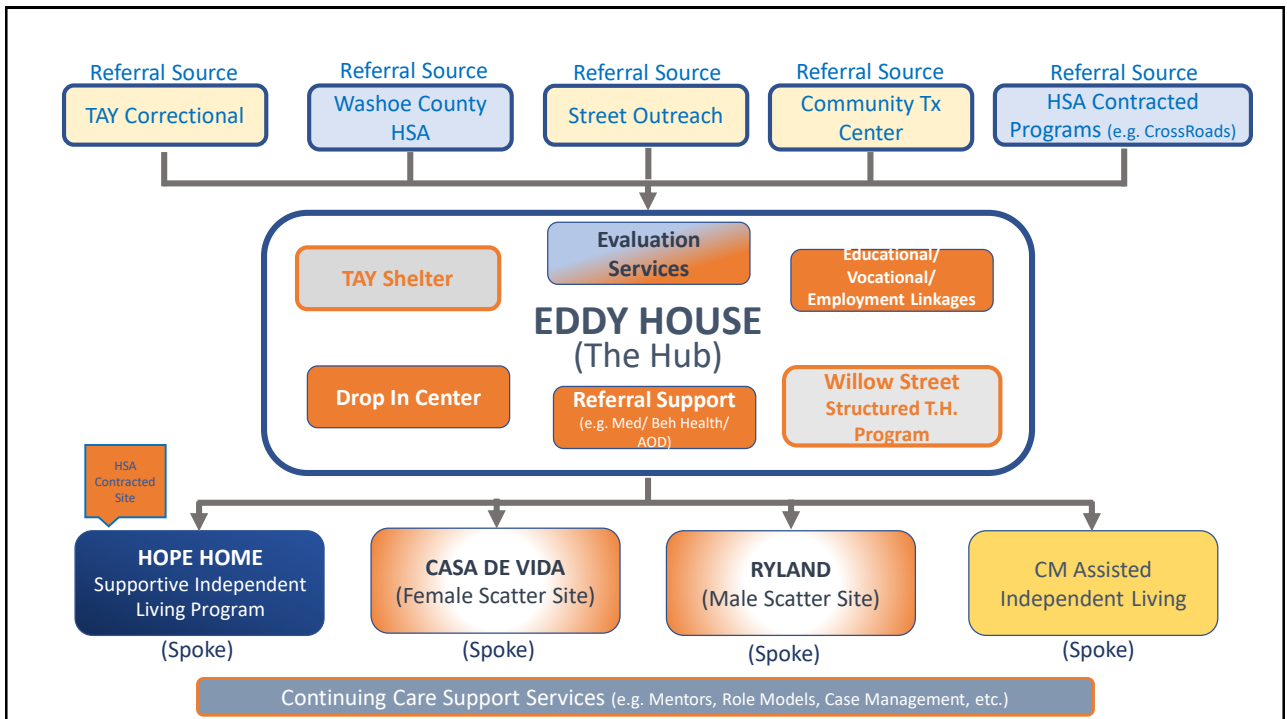
THE HOPE HOME



Serving Transitional Age Youth (TAY)
18 to 24 years of age

Under the oversight of HSA, the **HOPE HOME** will utilize a range of professional & paraprofessional staff to provide homeless Transitional Age Youth (TAY) with a safe & supportive **LAUNCHING PAD** to develop the key skills for self-sustained independence.

9



10



- DEVELOPING HEALTHY SUPPORTIVE RELATIONSHIPS OUTSIDE OF THE SOCIAL SERVICE SYSTEM
- NAVIGATING AND ACCESSING NEEDED SERVICES & COMMUNITY RESOURCES THROUGH INDIVIDUALIZED CASE MANAGEMENT SERVICES
- PROVIDING LIFE SKILLS/LIFE MANAGEMENT TRAINING, COACHING & DEVELOPMENT
- ENGAGING IN EDUCATIONAL/ VOCATIONAL/ EMPLOYMENT READINESS
- LINKAGES TO PRIMARY & BEHAVIORAL HEALTH SERVICES TO ADDRESS ANY MEDICAL, SUBSTANCE RELATED AND/OR MENTAL HEALTH CONDITIONS

11

HOPE HOME

Contact: **EDDY HOUSE**

Austin Solheim
775-384-1129
Austin@eddyhouse.org



12

**CONTACT
INFORMATION**



**HUMAN SERVICES
AGENCY**

AMY REYNOLDS, LSW

*ADULT SERVICES
COORDINATOR*

HUMAN SERVICES AGENCY

(775) 337-4548

AREYNOLDS@WASHOECOUNTY.US

FRANKIE D. LEMUS, MA, MFT

*BEHAVIORAL HEALTH
PROGRAMS COORDINATOR*

HUMAN SERVICES AGENCY

(775) 379-4729

FLEMUS@WASHOECOUNTY.US