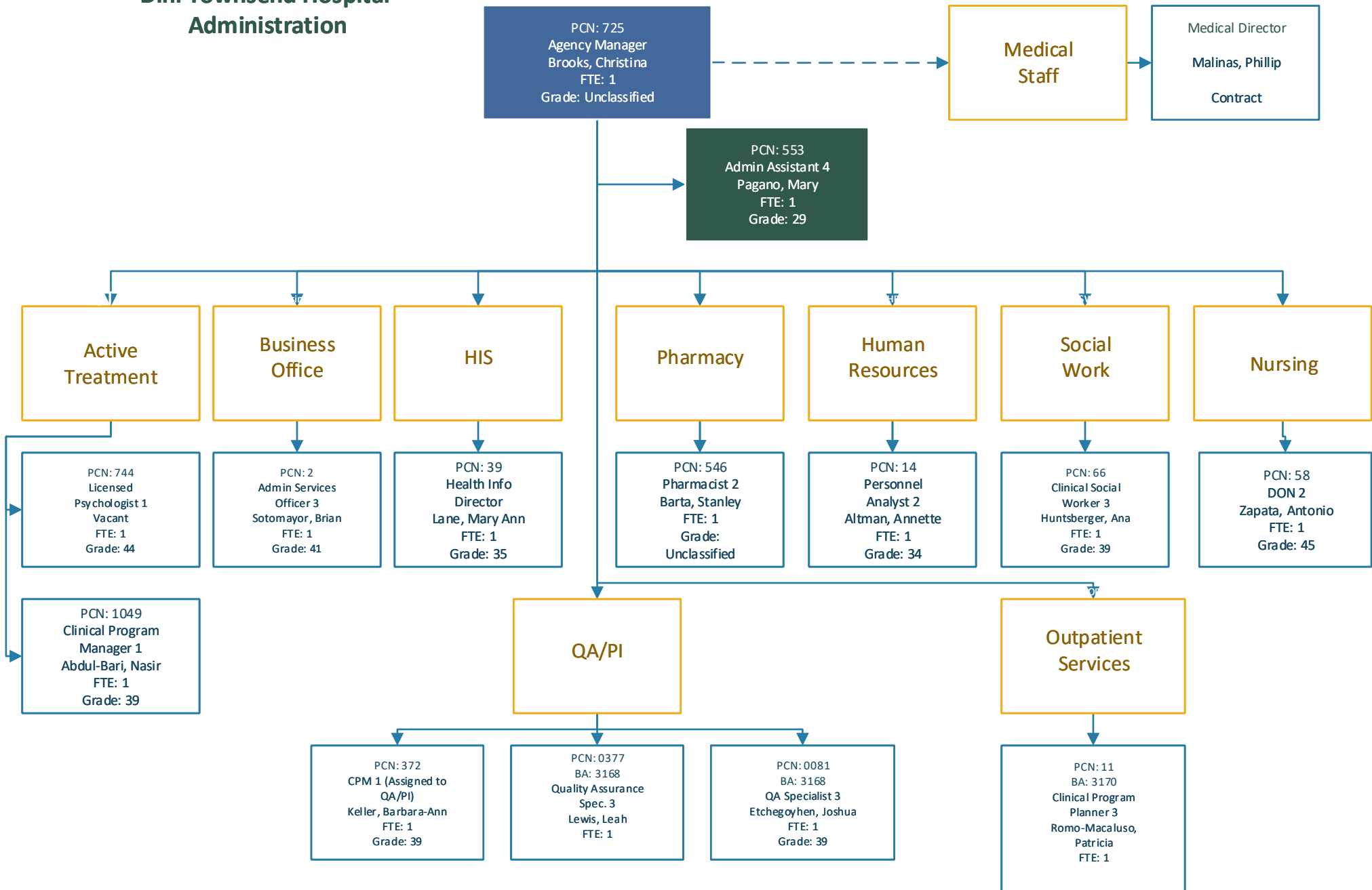


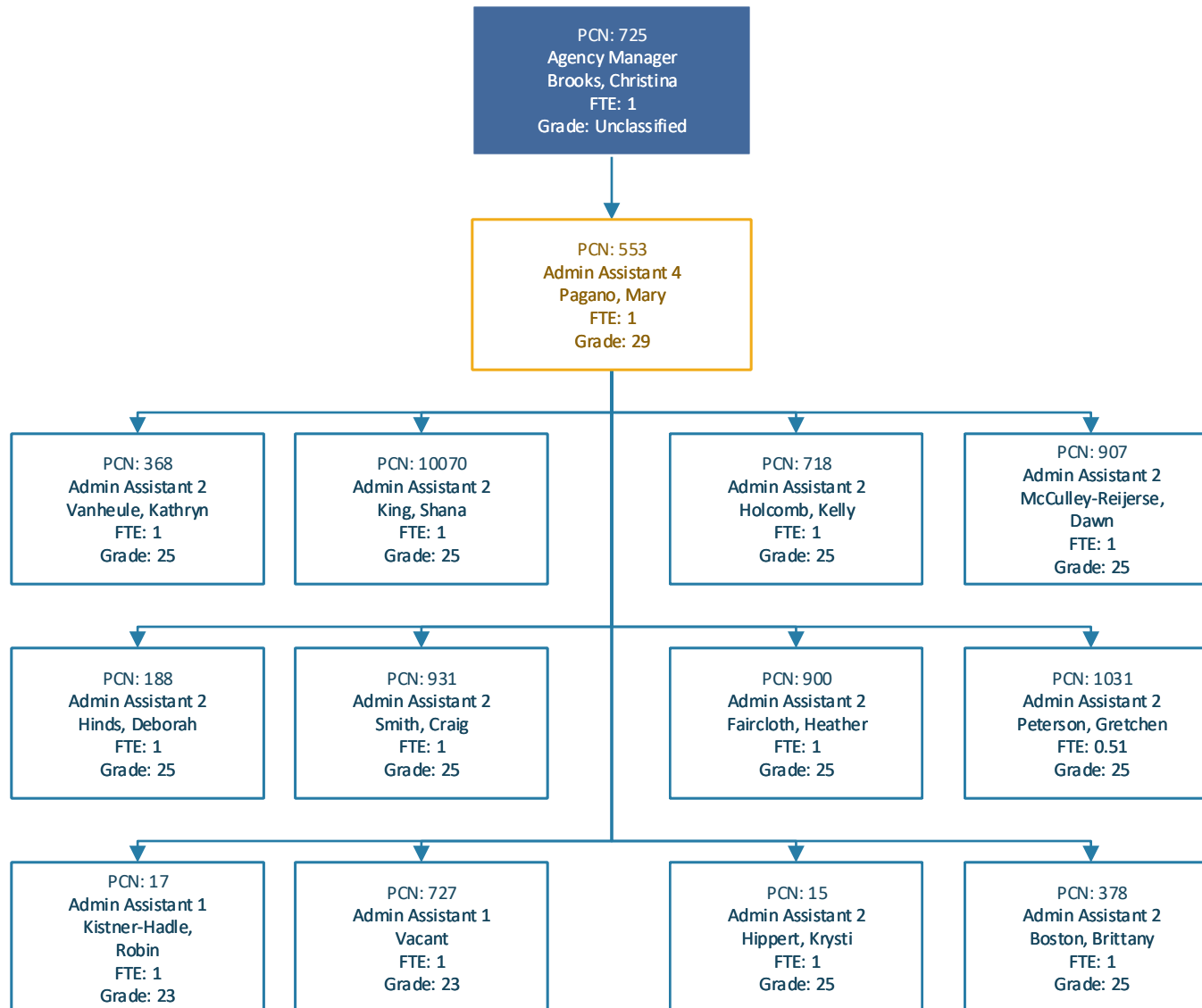
**Division of Public and Behavioral Health  
Northern Nevada Adult Mental Health Services  
11/27/2018  
Dini Townsend Hospital  
Administration**



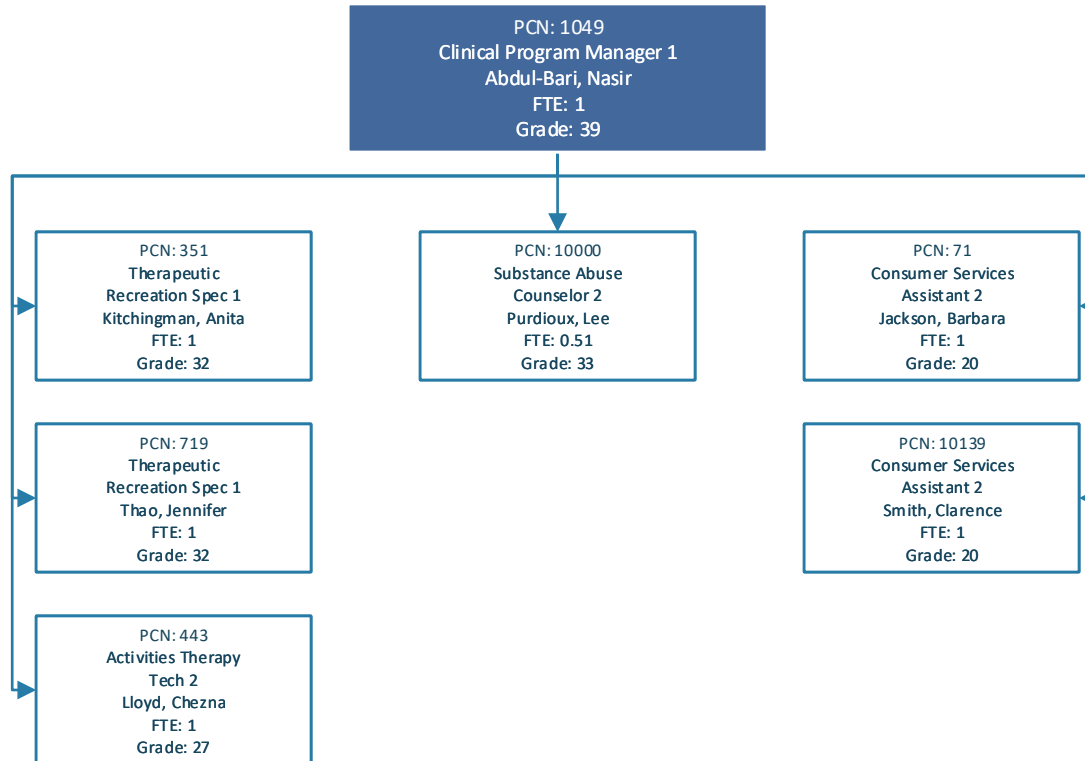
**Division of Public and Behavioral Health  
Northern Nevada Adult Mental Health Services**

**11/27/2018**

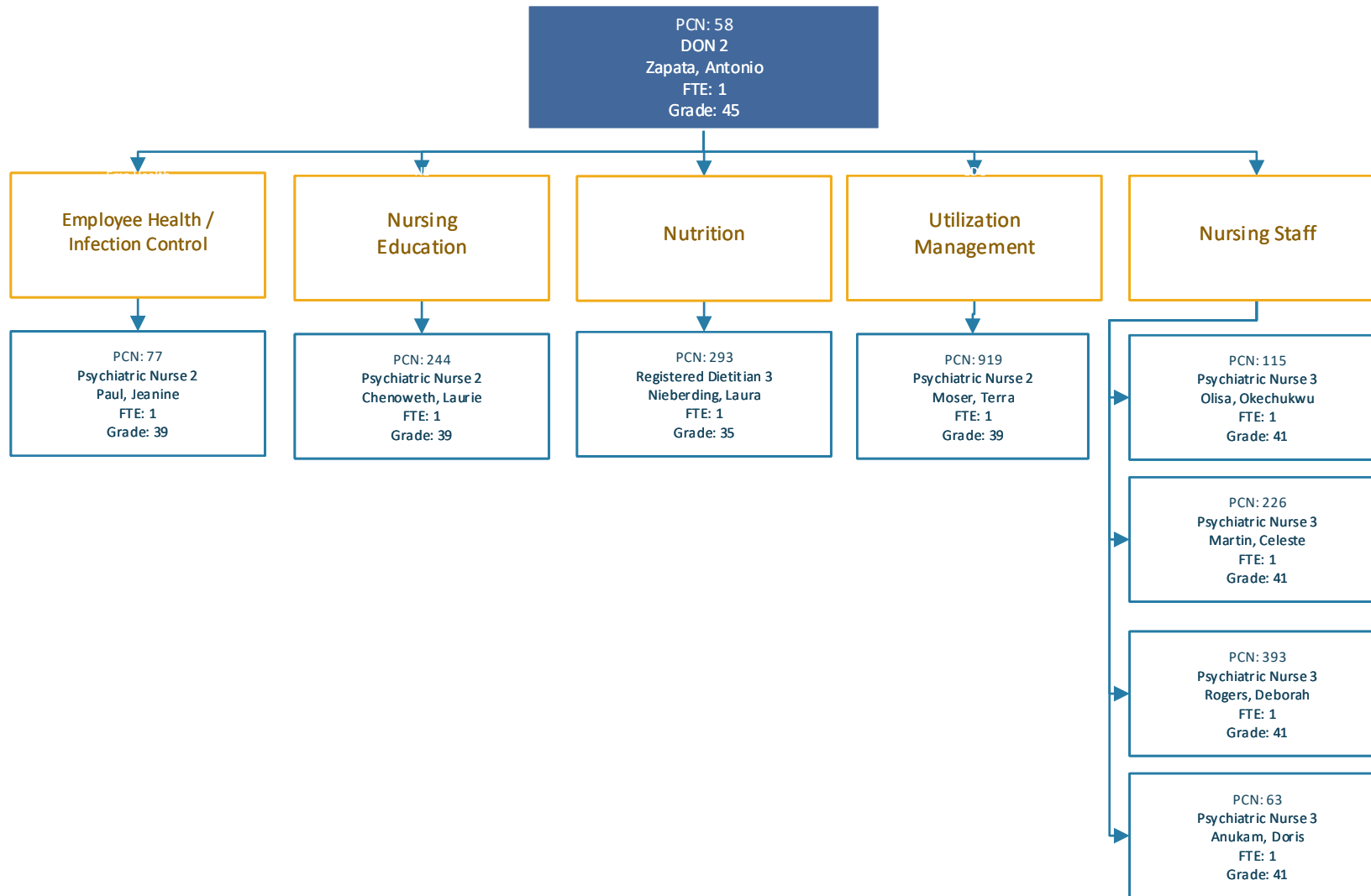
**Dini Townsend Hospital  
Administrative Support**



**Division of Public and Behavioral Health  
Northern Nevada Adult Mental Health Services  
11/27/2018  
Dini Townsend Hospital  
Active Treatment**



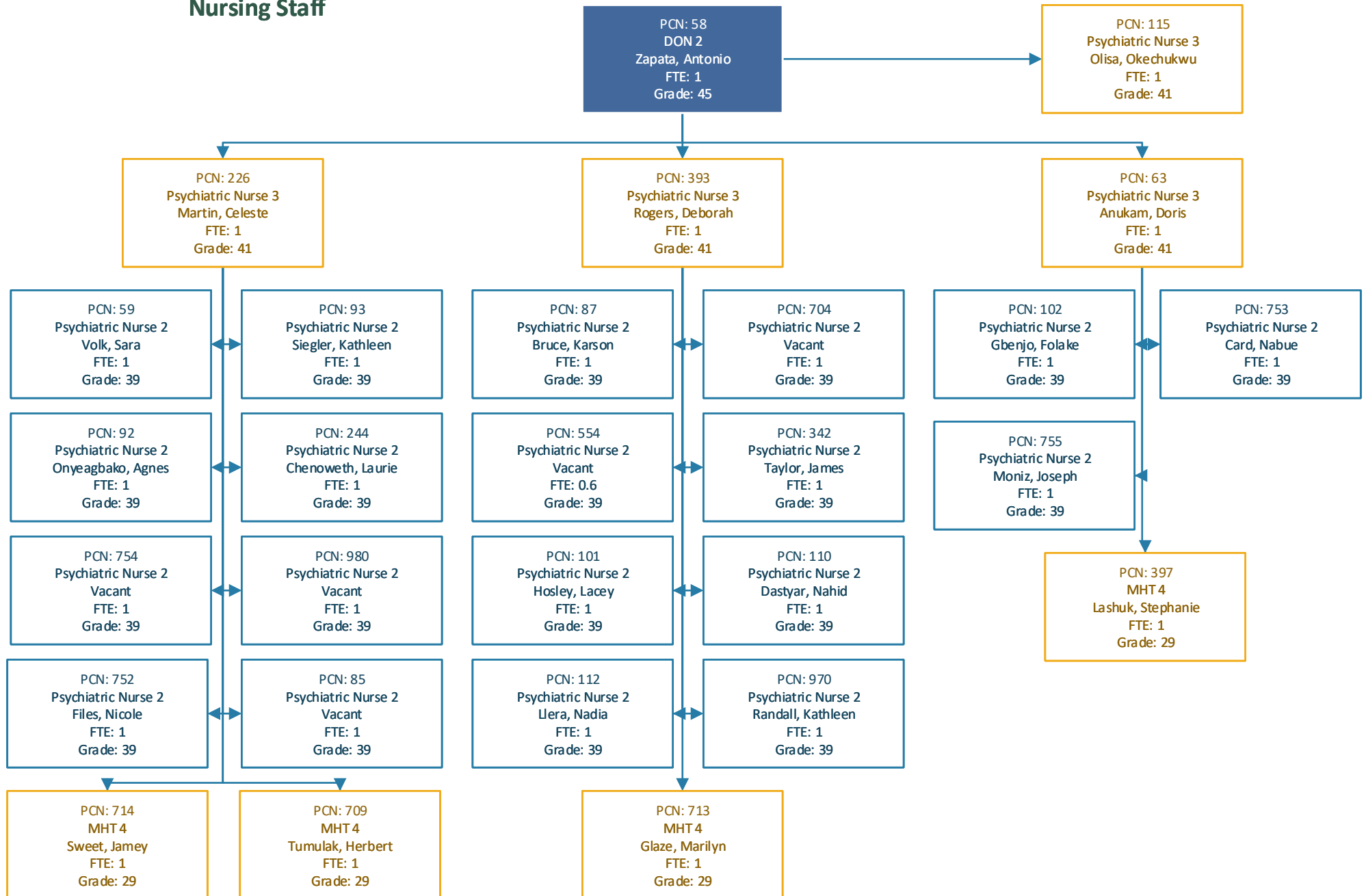
**Division of Public and Behavioral Health  
Northern Nevada Adult Mental Health Services  
11/27/2018  
Dini Townsend Hospital  
Nursing Department**



**Division of Public and Behavioral Health  
Northern Nevada Adult Mental Health Services**

**11/27/2018**

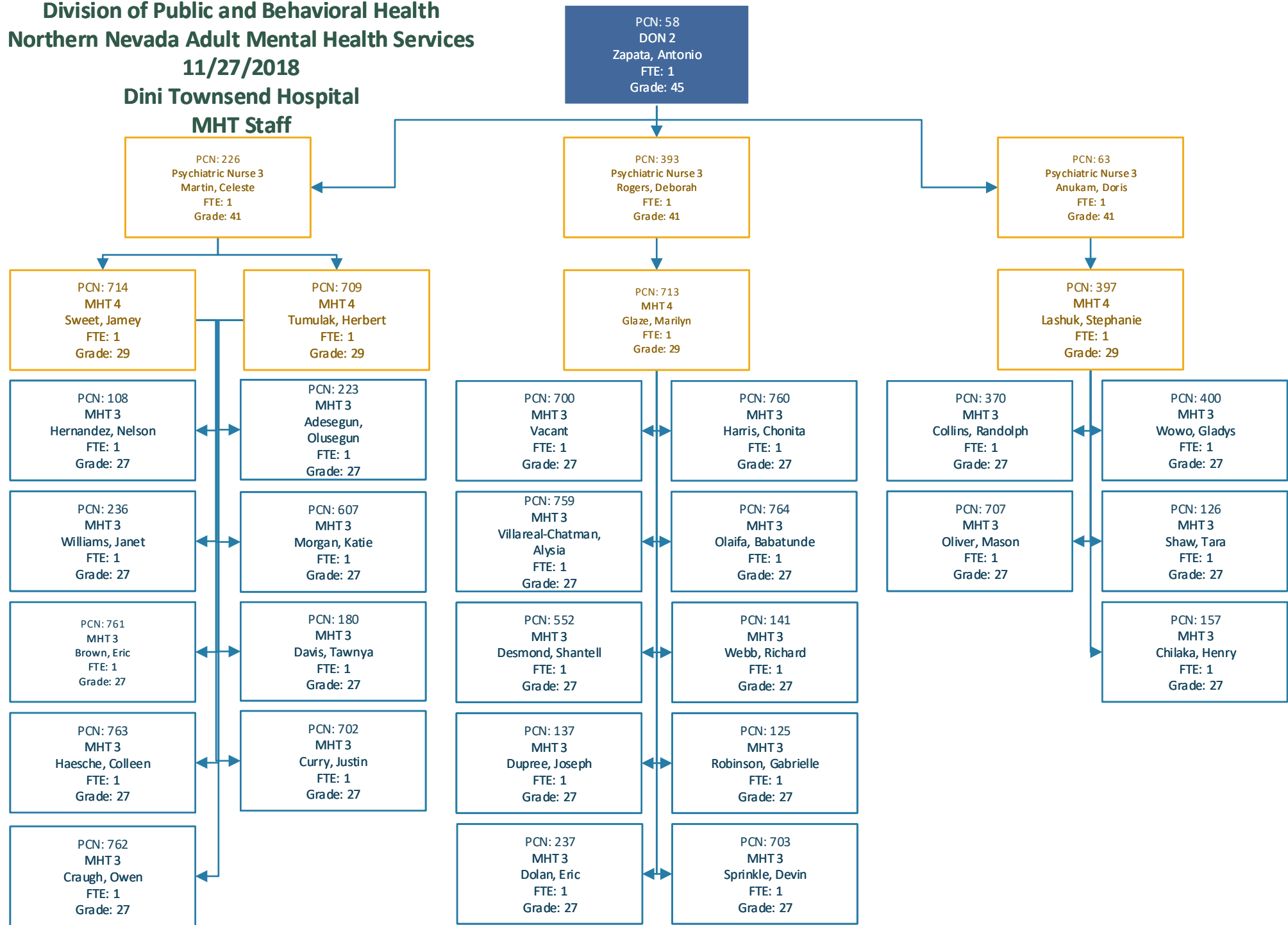
**Dini Townsend Hospital  
Nursing Staff**



**Division of Public and Behavioral Health  
Northern Nevada Adult Mental Health Services**

**11/27/2018**

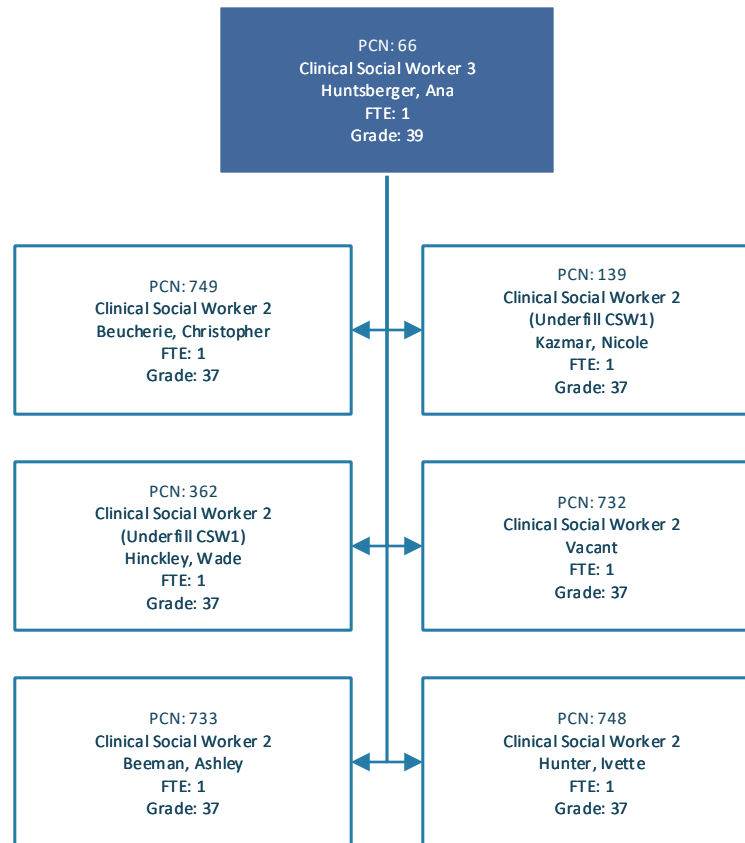
**Dini Townsend Hospital  
MHT Staff**



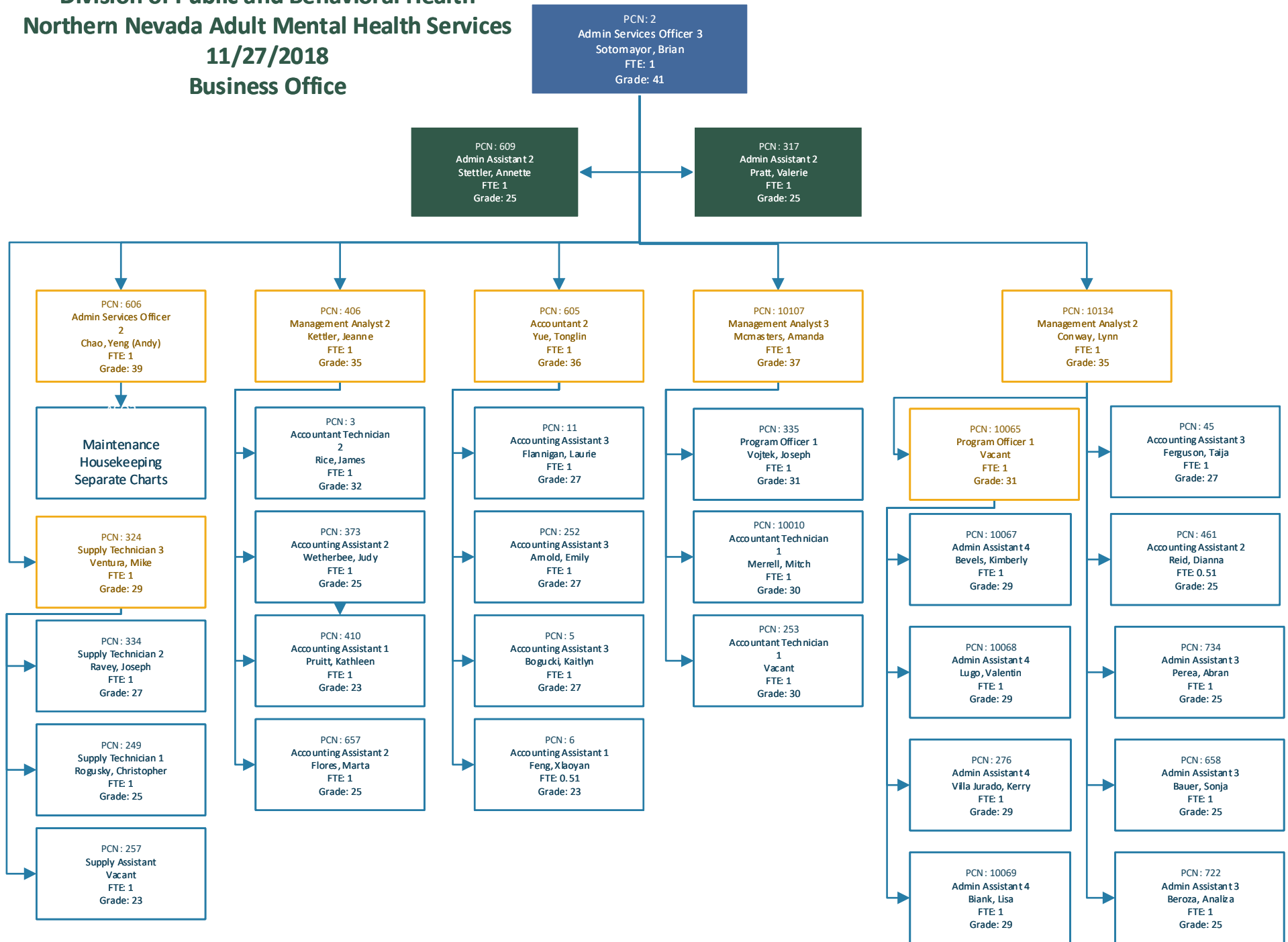
**Division of Public and Behavioral Health  
Northern Nevada Adult Mental Health Services**

**11/27/2018**

**Dini Townsend Hospital  
Social Work Dept.**



**Division of Public and Behavioral Health  
Northern Nevada Adult Mental Health Services  
11/27/2018  
Business Office**

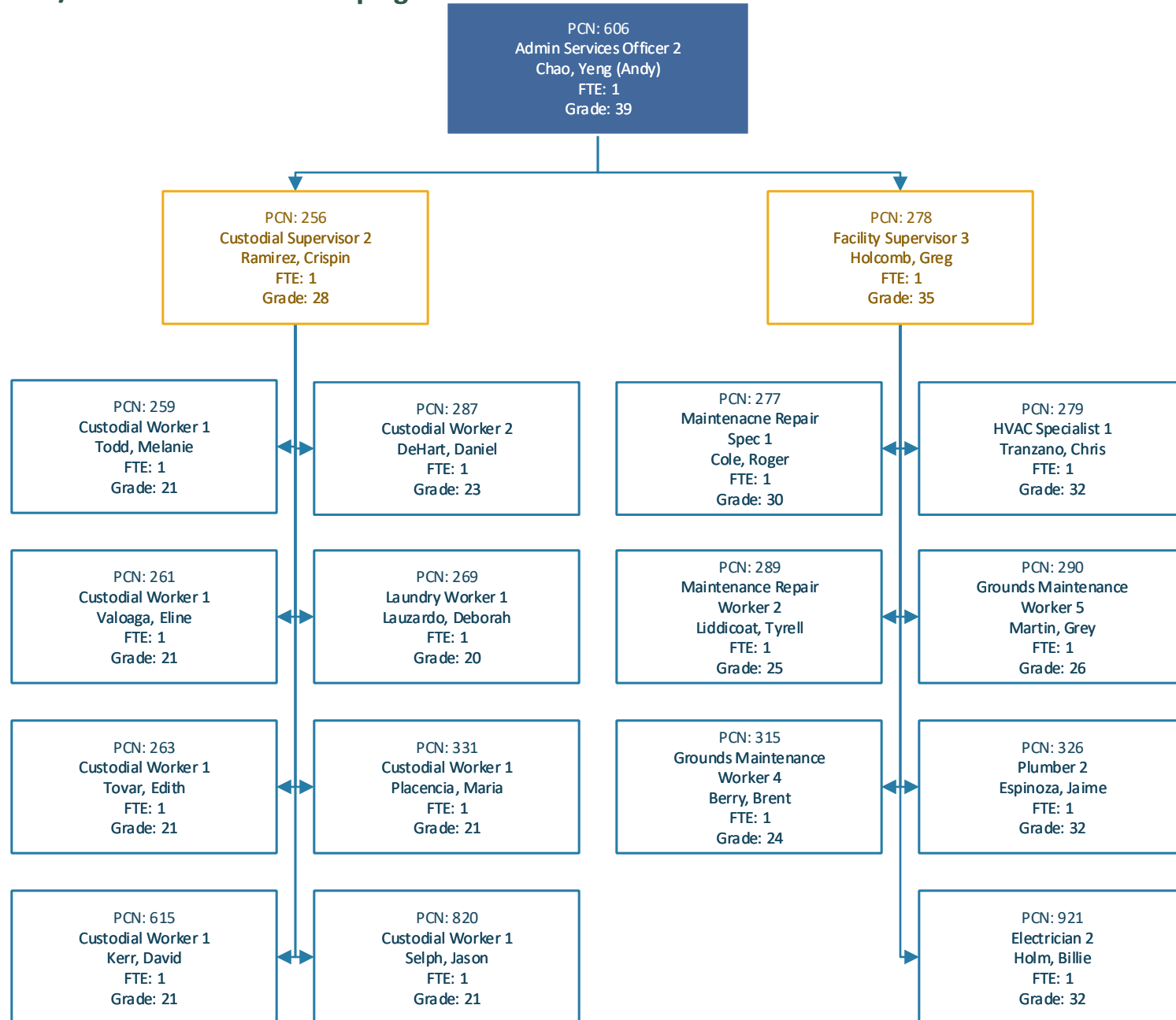




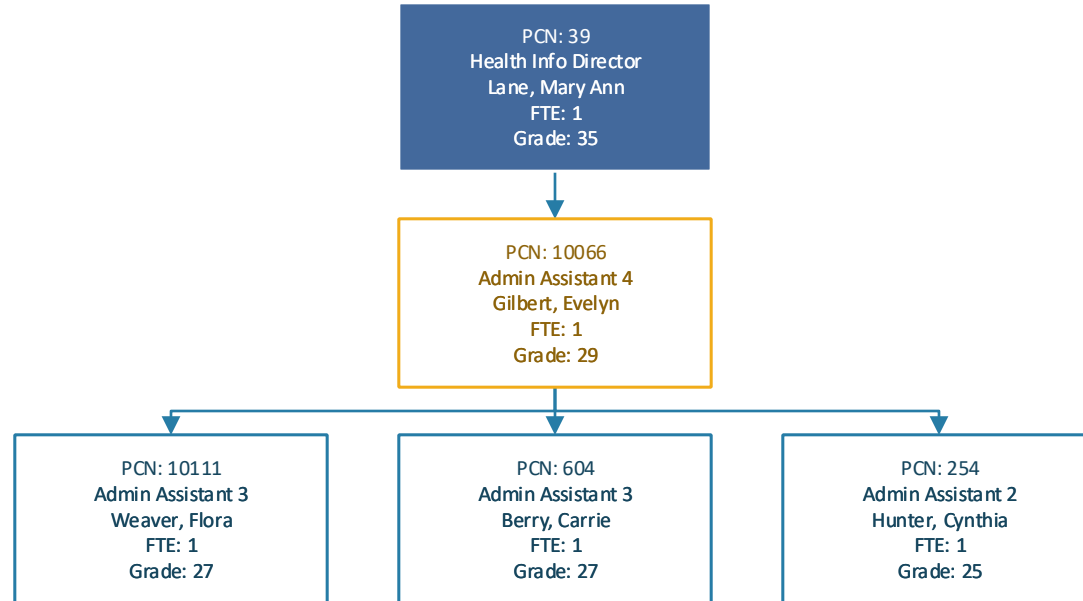
**Division of Public and Behavioral Health  
Northern Nevada Adult Mental Health Services**

**11/27/2018**

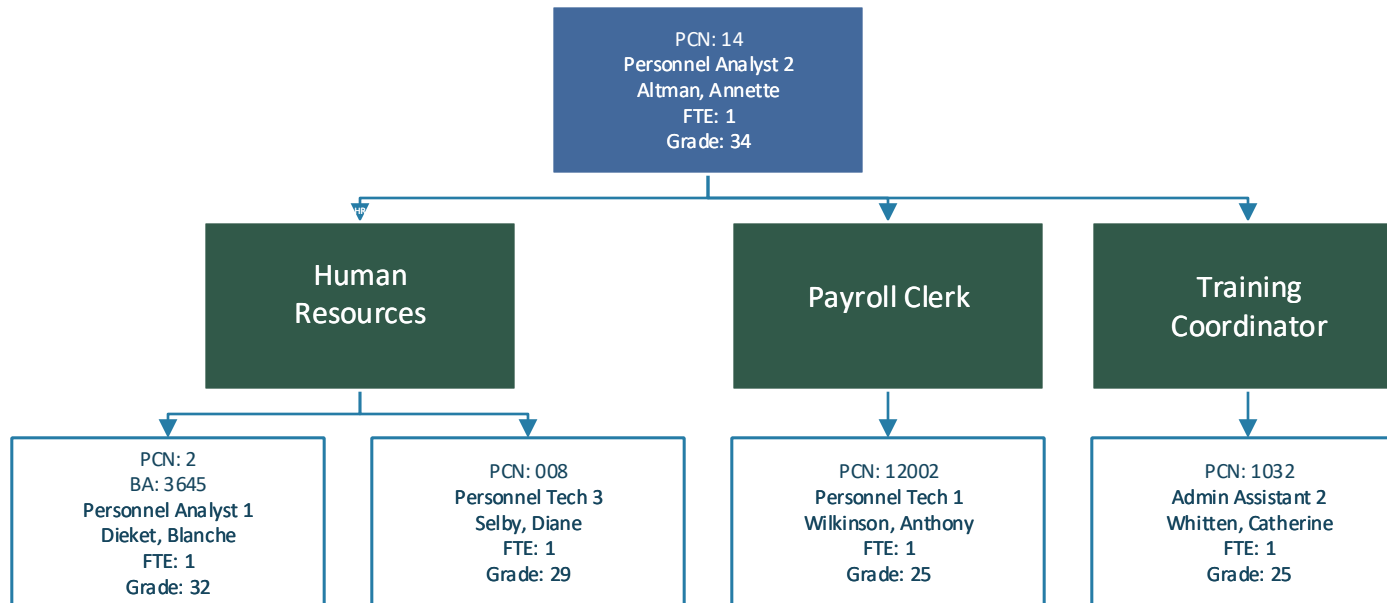
**Maintenance/Grounds and Housekeeping**



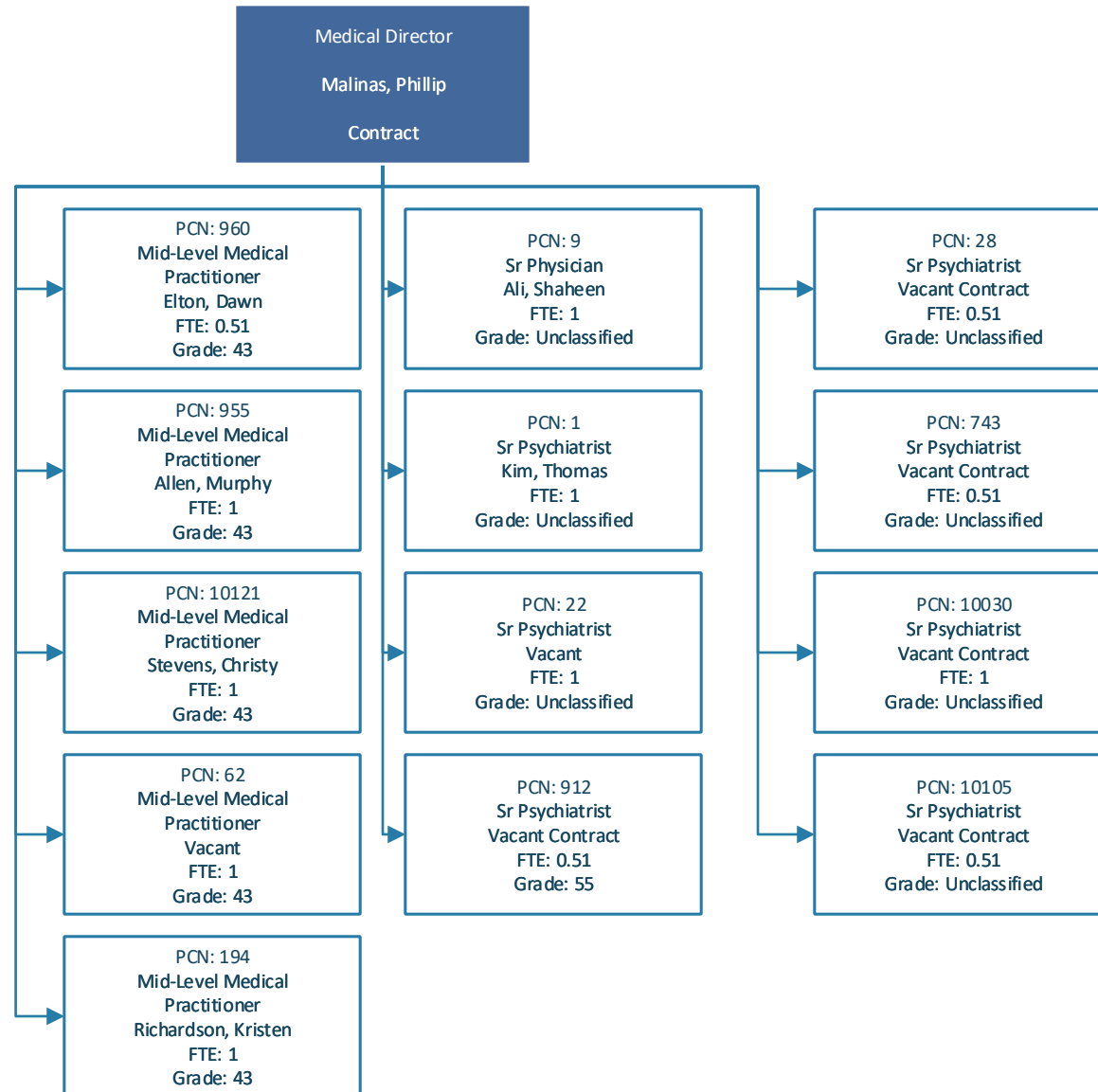
**Division of Public and Behavioral Health  
Northern Nevada Adult Mental Health Services  
11/27/2018  
Health Information Services (HIS)**



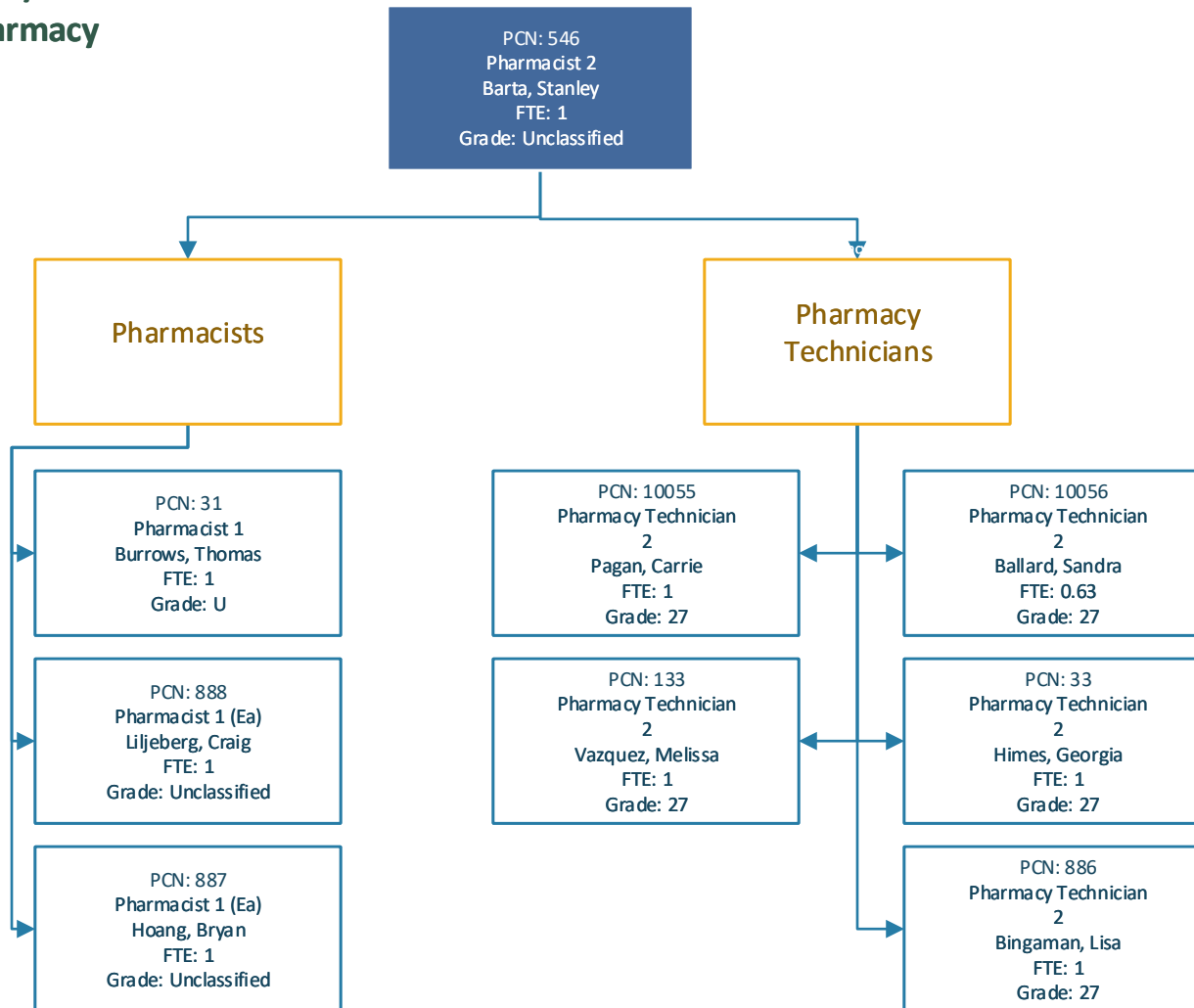
**Division of Public and Behavioral Health  
Northern Nevada Adult Mental Health Services  
11/27/2018  
Human Resources / Payroll / Training**



**Division of Public and Behavioral Health**  
**Northern Nevada Adult Mental Health Services**  
**11/27/2018**  
**Medical Staff**



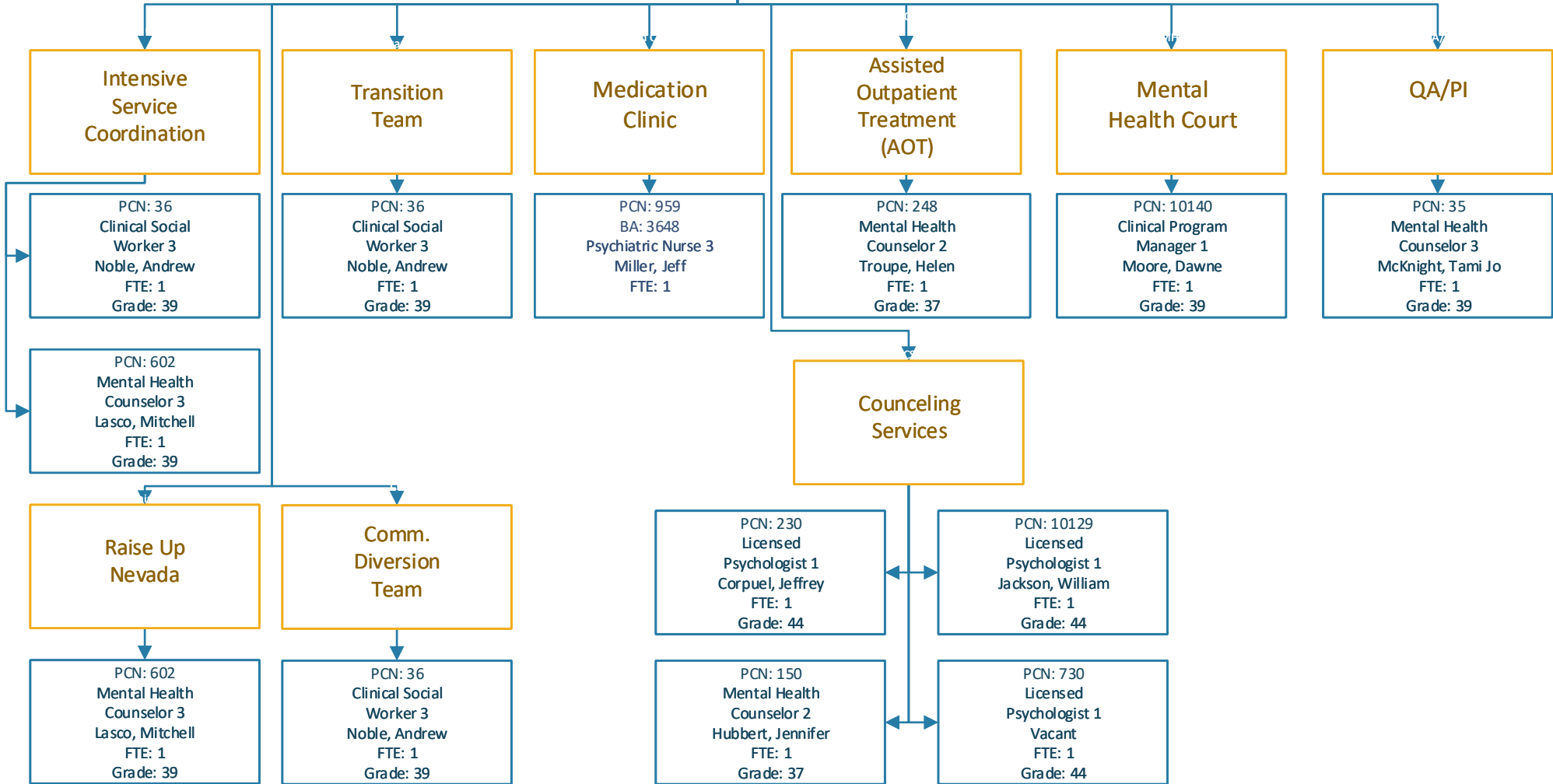
**Division of Public and Behavioral Health  
Northern Nevada Adult Mental Health Services  
11/27/2018  
Pharmacy**



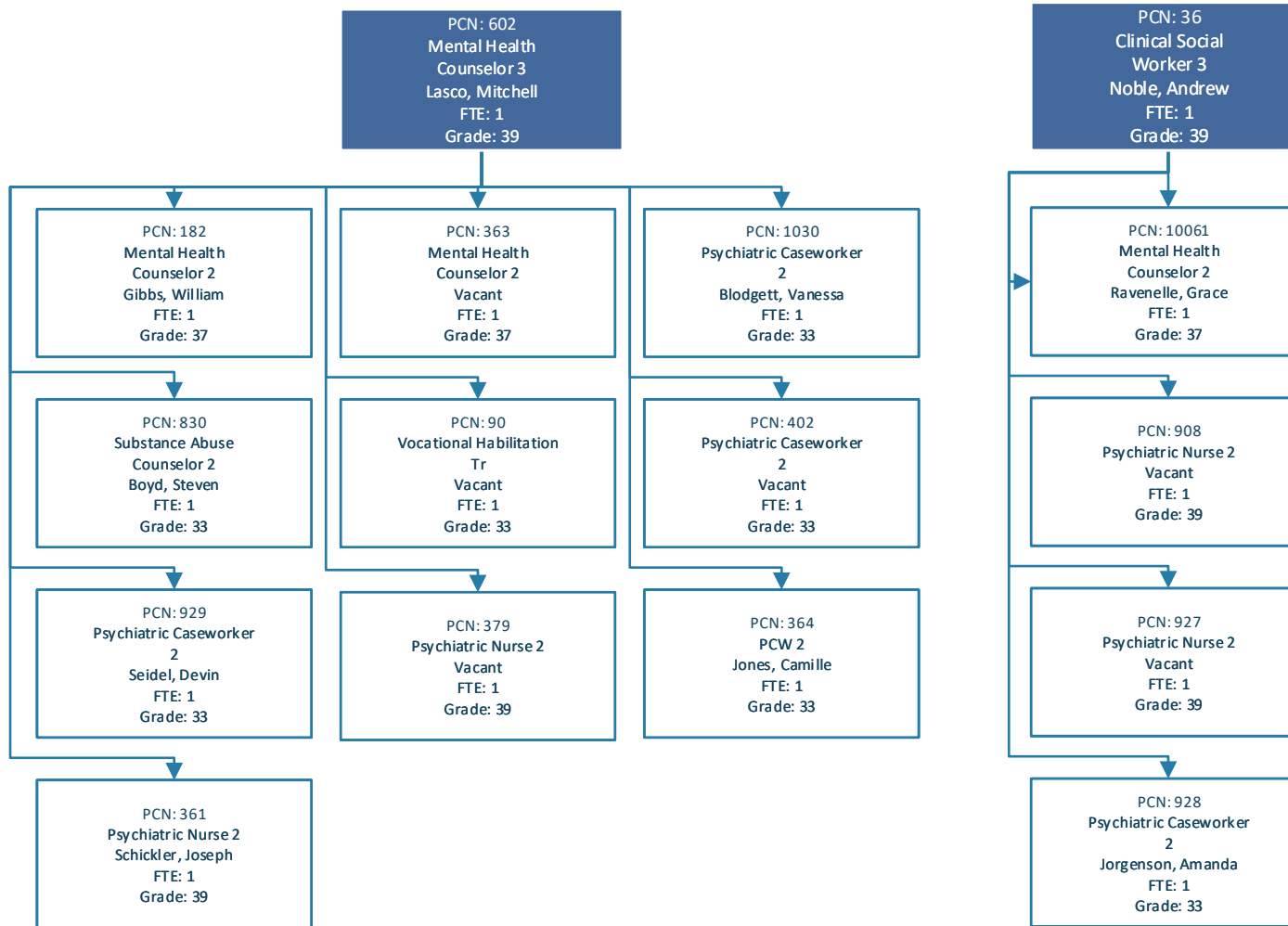
**Division of Public and Behavioral Health  
Northern Nevada Adult Mental Health Services  
11/27/2018  
Outpatient Services  
Administration**

PCN: 725  
Agency Manager  
Brooks, Christina  
FTE: 1  
Grade: Unclassified

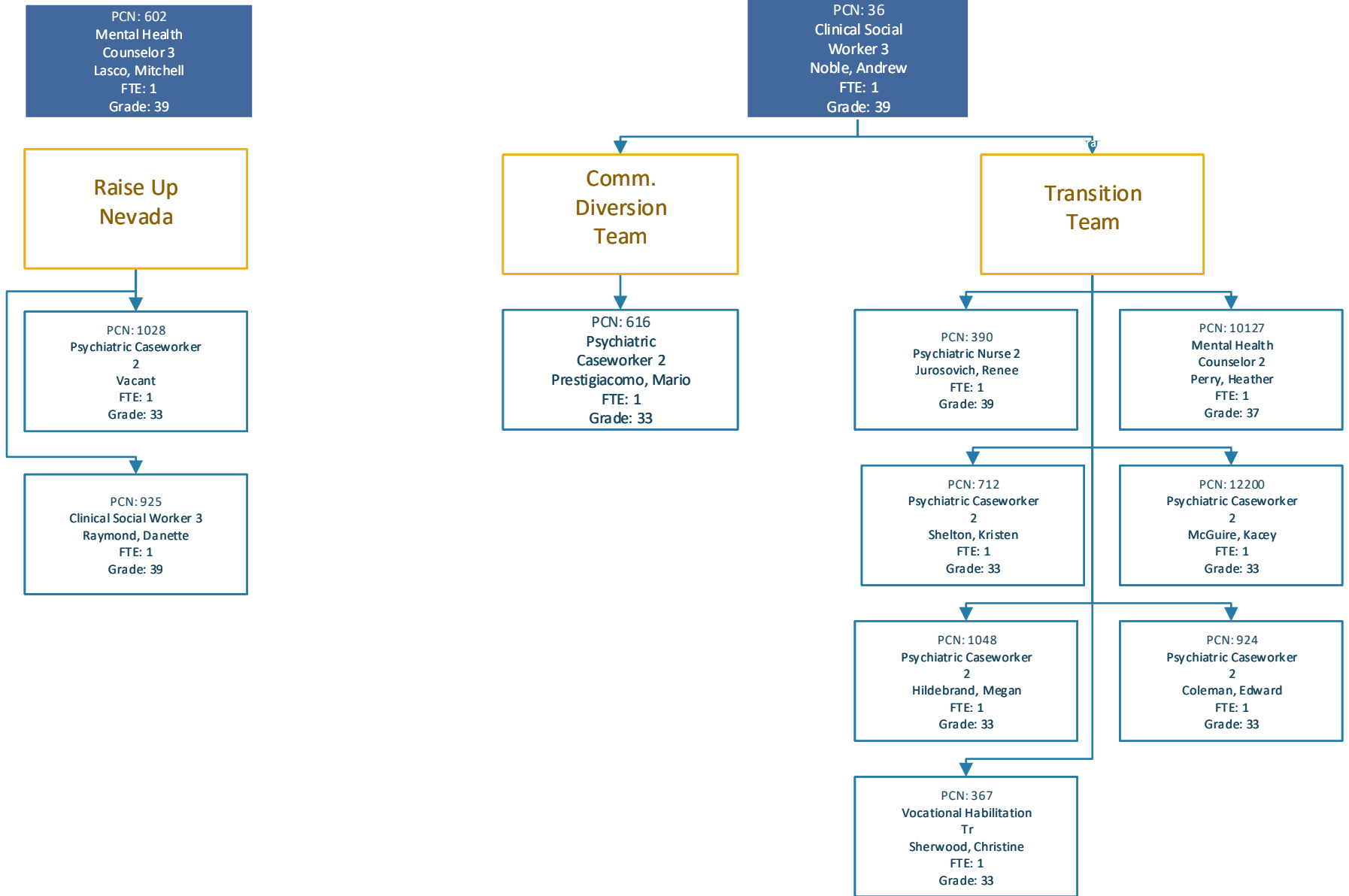
PCN: 11  
BA: 3170  
Clinical Program Planner 3  
Romo-Macaluso, Patricia  
FTE: 1



**Division of Public and Behavioral Health  
Northern Nevada Adult Mental Health Services  
11/27/2018  
Outpatient Services  
Intensive Service Coordination**



**Division of Public and Behavioral Health**  
**Northern Nevada Adult Mental Health Services**  
**11/27/2018**  
**Outpatient Services**  
**Raise Up NV/Comm. Diversion/Transition Team**

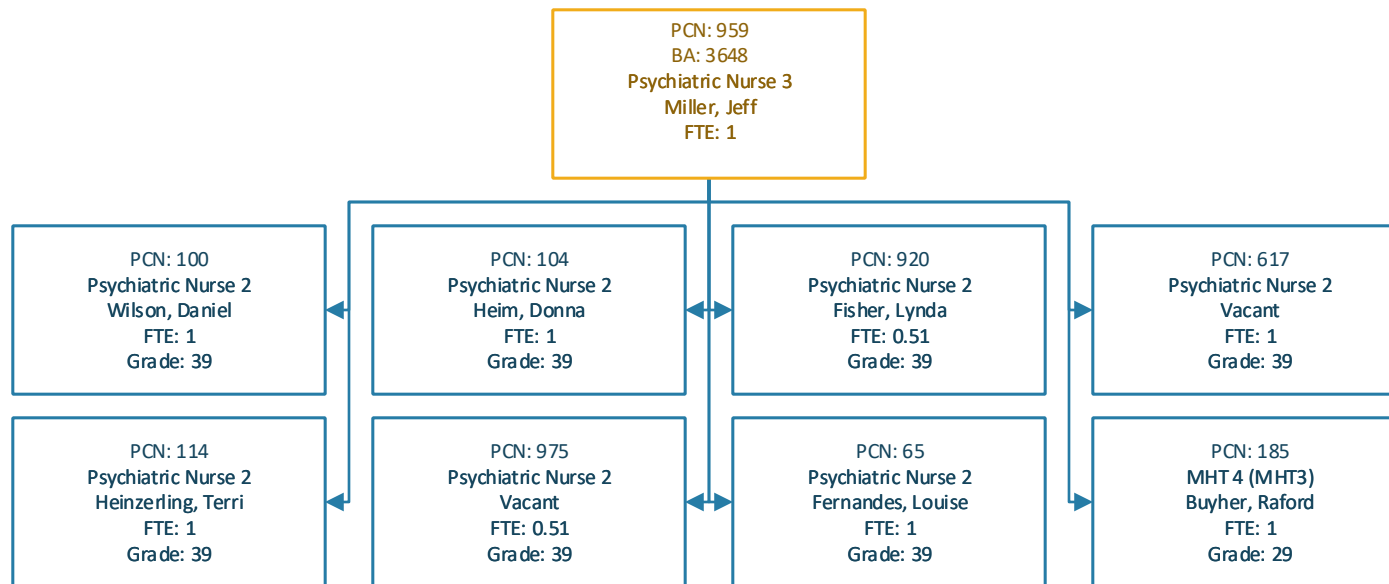




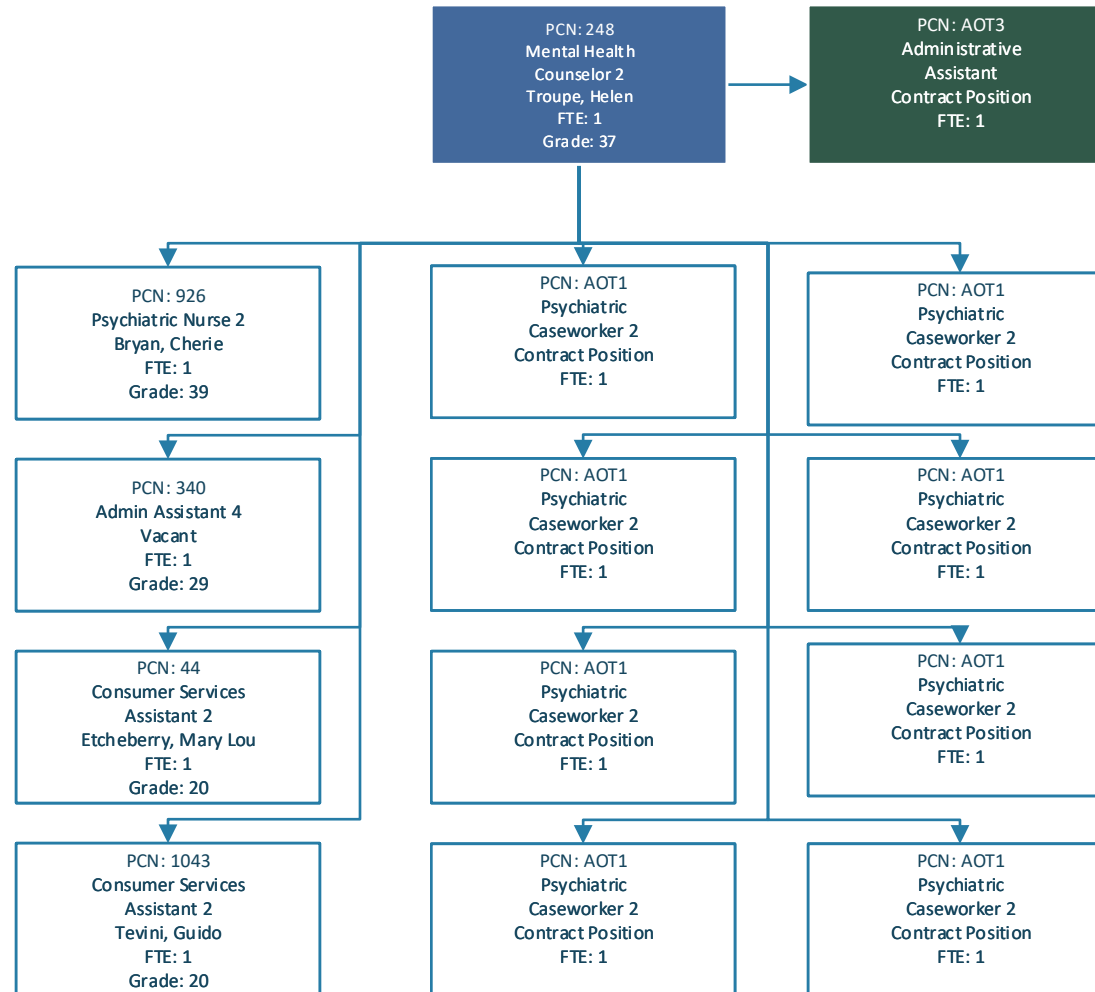
**Division of Public and Behavioral Health  
Northern Nevada Adult Mental Health Services**

**11/27/2018**

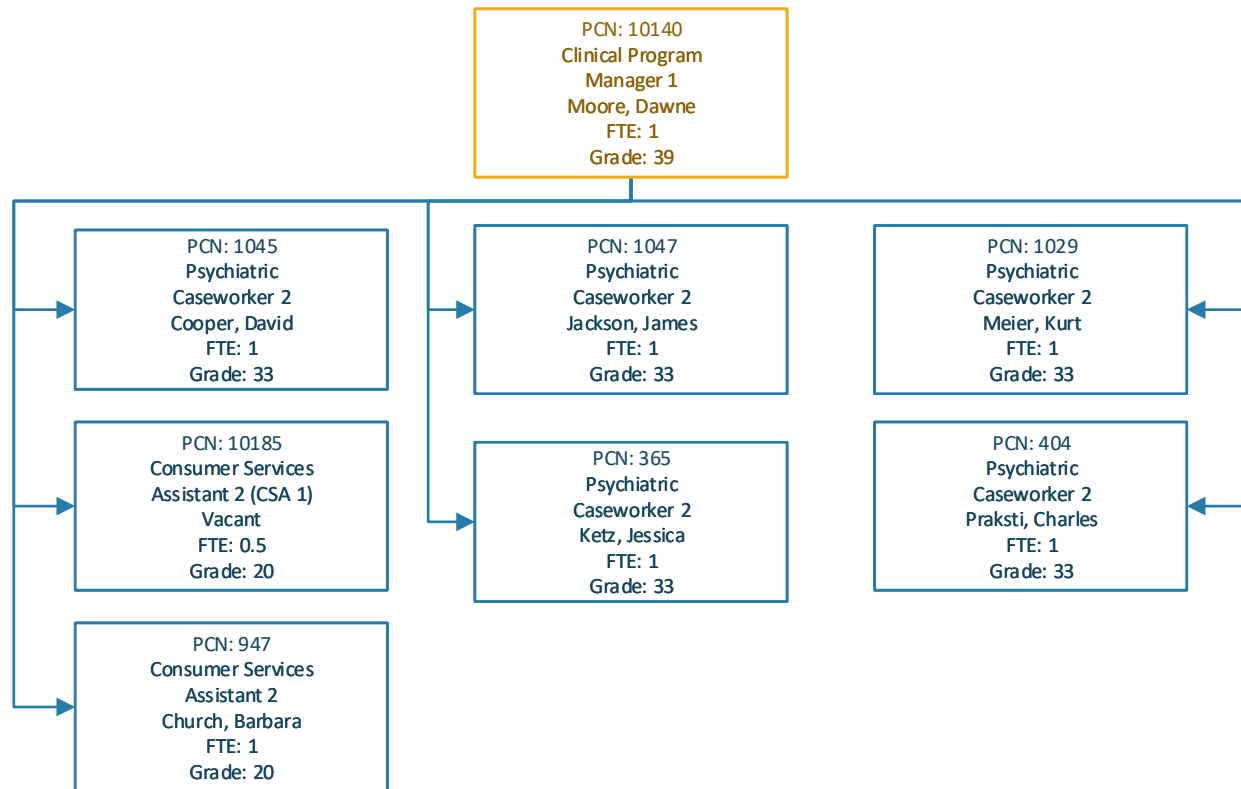
**Outpatient Services  
Medication Clinic**



**Division of Public and Behavioral Health**  
**Northern Nevada Adult Mental Health Services**  
**11/27/2018**  
**Outpatient Services**  
**AOT**



**Division of Public and Behavioral Health  
Northern Nevada Adult Mental Health Services  
11/27/2018  
Outpatient Services  
Mental Health Court**



**Division of Public and Behavioral Health  
Northern Nevada Adult Mental Health Services  
11/27/2018  
Community Partnerships**

DPBH	LCC	Washoe County	Laboratory
PCN: 906 Clinical Program Manager 2 Valentine, Laura FTE: 1 Grade: 42	PCN: 915 Licensed Psychologist 1 (Assigned LCC) Loring, Susan FTE: 1 Grade: 44	PCN: 12000 Mental Health Counselor 2 Washoe County-MOST FTE: 1 Grade: 37	PCN: 51 Microbiologist 4 Vacant FTE: 1 Grade: 36
PCN: 78 Psychiatric Nurse 4 Kitchingman, Gregory FTE: 1 Grade: 43	PCN: 239 Psychiatric Nurse 2 (Assigned to LCC) Vacant FTE: 1 Grade: 39	PCN: 12001 Mental Health Counselor 2 Washoe County-MOST FTE: 1 Grade: 37	PCN: 10114 Laboratory Technician 1 Vacant FTE: 0.5 Grade: 25
PCN: 405 PCW 2 (HCQC) Boothe, Osiris FTE: 1 Grade: 33	PCN: 86 Psychiatric Nurse 2 (Assigned to LCC) Vacant FTE: 1 Grade: 39	PCN: 34 Mental Health Counselor 2 Washoe County-MOST FTE: 1 Grade: 37	
PCN: 909 PCW 2 (HCQC) Spurgeon, Gregory FTE: 1 Grade: 33			