



Nevada Ryan White Part B CAREWare Guidance Documents Logging into CAREWare Guide

Access the Remote Desktop Access Website via the URL:

<https://careware-nv.ixn.com>

There will be multiple log-in screens, the first of which looks like this:

RD Web Access

Work Resources
RemoteApp and Desktop Connection

Help

Domain\user name:

Password:

Security ([show explanation](#))

This is a public or shared computer

This is a private computer

[Password Reset Utility](#)

Sign in

To protect against unauthorized access, your RD Web Access session will automatically time out after a period of inactivity. If your session ends, refresh your browser and sign in again.

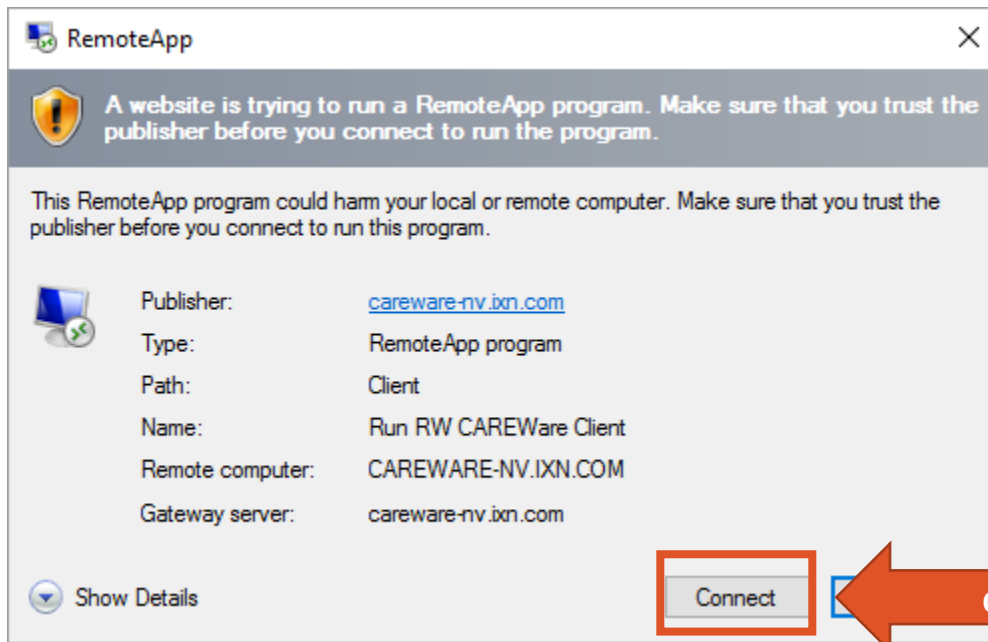
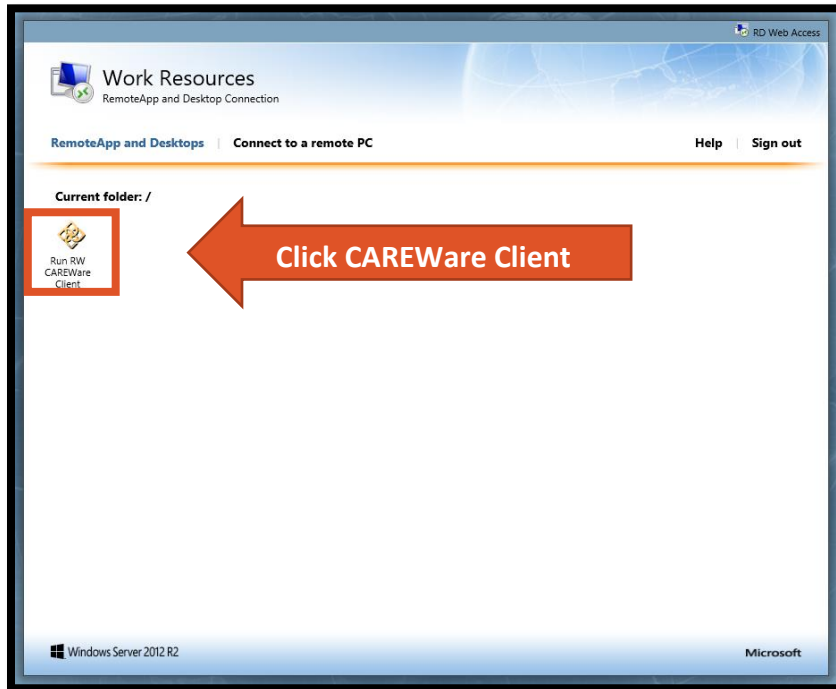
Windows Server 2012 R2 Microsoft

The **Domain** for this log-in is **ixn**. Your username for the Remote Desktop Access Website uses the first **letter of your first name** then your **full last name**. As an example for user John Cook, the entry in the first box would be **ixn\jcook**. The **password** for the Remote Access Desktop Website is obtained from the Nevada Office of HIV/AIDS. If you need a Remote Desktop Access Website password reset please contact CAREWareHelp@health.nv.gov.



Nevada Ryan White Part B CAREWare Guidance Documents Logging into CAREWare Guide

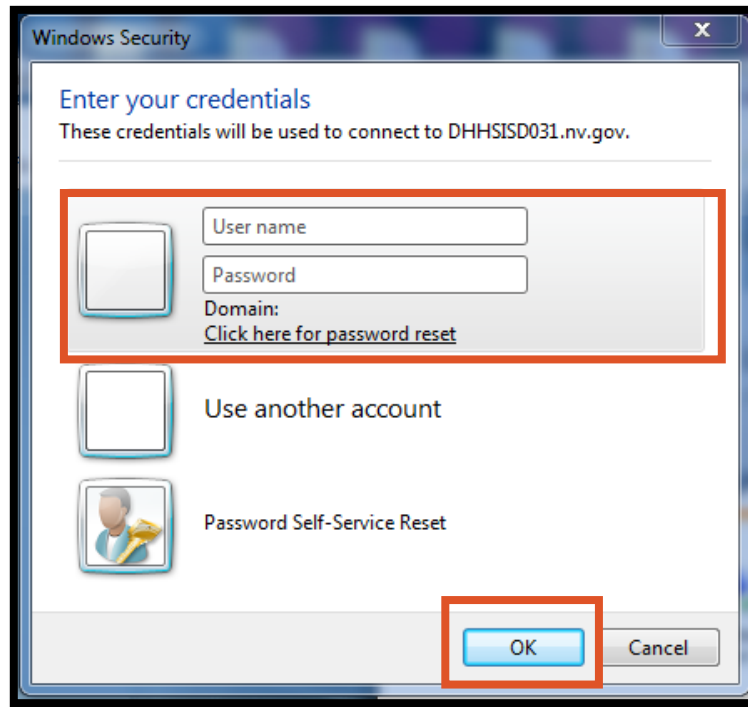
Once you log in to the Remote Desktop Access Website you will have to navigate through various screens – see below.





Nevada Ryan White Part B CAREWare Guidance Documents Logging into CAREWare Guide

Windows Security will issue a pop-up asking you to enter your credentials. This is the build-in defense that Microsoft Windows computers have for any connections to Remote Desktop Website Access. The credentials will be the same ones just used from Page 1 of this guide.



The **Domain** for this log-in is **ixn**. Your username for the Remote Desktop Access Website uses the first **letter of your first name** then your **full last name**. As an example for user John Cook, the entry in the first box would be **ixn\jcook**. The **password** for the Remote Access Desktop Website is obtained from the Nevada Office of HIV/AIDS. If you need a Remote Desktop Access Website password reset please contact CAREWareHelp@health.nv.gov.



Nevada Ryan White Part B CAREWare Guidance Documents Logging into CAREWare Guide

RW CAREWare Login

Department of Health and Human Services
HRSA
Health Resources and Services Administration

RW CAREWare

Version 5.0
Build 827

User Name:

Password:

Login Cancel Options>>

2.0.50727.8009

Finally, you will get to the HRSA- CAREWARE Log-in Window. The **username and password** will be given to you by the Office of HIV/AIDS upon initial access. When you log-in you will be taken directly to your agency's CAREWare home page. If you need a password reset for this window, please email CAREWAREHelp@health.nv.gov. You will successfully be in CAREWare if you are brought to this Main Menu. Please contact our office via CAREWAREHelp@health.nv.gov if you run into any questions.

Main Menu

Department of Health and Human Services
HRSA
Health Resources and Services Administration

Add Client

Find Client

Reports

Drug Inventory System

Appointments

Orders

Administrative Options

My Settings

Rapid Service Entry

Log Off

Exit

System Messages

[18 Administrative alarms.](#)

[User Messages](#)

[About CAREWare](#)

[Refresh Messages](#)

Welcome to CAREWare!