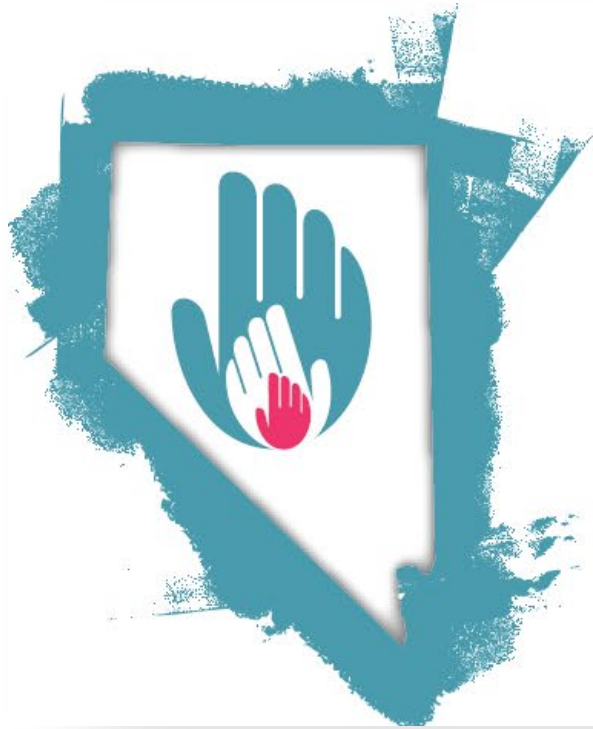


Peer Recovery Support Specialist (PRSS) Certification
SB69 (2021)



NEVADA
Certification Board

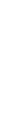
Nevada Certification Board (NCB)

est. 2015

As an affiliate member board of the International Certification and Reciprocity Consortium (IC&RC) NCB provides Nevada with a community and behavioral health workforce that is well trained, educated, and skilled in providing appropriate services.

Credentials

Certification	Number of Applicants	Number currently Certified
Prevention Specialist (CPS)	118	28
Community Health Worker I (CCHW)	541	500
Community Health Worker II (CCHW)	196	76
Peer Recovery Support Specialist (CPRSS & PRSS-I)	772	317
Peer Recovery Support Specialist Supervisor (CPRSS-S)	68	55
Birth Doula	54	20
Postpartum Doula – Coming Soon	N/A	N/A



Credentials by Year

Certification	2017	2018	2019	2020	2021	2022	2023
Prevention	28	2	2	2	1	4	7
CHW I			16	30	56	201	260
CHW II			5	15	1	45	21
PRSS	57	38	20	29	39	40	58
PRSS-S						18	38
Birth Doula						7	13

Endorsements

Endorsements are on a specific topic and is a formal recognition that verifies an individual's knowledge, skills, and expertise in that area. Individuals need to be certified for 1 year in their credential prior to obtaining an endorsement.

- PRSS Problem Gambling Endorsement: 15 hr training
- PRSS Trauma Informed Care Endorsement: 20 hr training
- CHW Early Childhood Endorsement: 25 hr training and work experience

NCB Functions

- Educate the State on existing paraprofessional behavioral health workforce certifications and expand the workforce through the creation of new relevant certifications and endorsements
- Design and approve all certification applications and renewals
- Approve core trainings and continuing education units (CEUs) for all certifications
- Maintain the [Public Registry](#) of NCB certified professionals
- Coordinate with IC&RC for reciprocity of CPS and CPRSS
- Investigate potential ethics violations

NCB Structure

Board of Directors

Board of Directors and Executive Committee (Chair, Vice-Chair, Secretary/Treasurer) serve as the governing body and ethics violations committee for the Nevada Certification Board.

Advisory Committees

- Community Health Worker (CHW) Certification Advisory Committee
- Doula Certification Advisory Committee
- Peer Recovery and Support Specialist (PRSS) and PRSS Supervisor Certification Advisory Committee
- Prevention Specialist Certification Advisory Committee
- Curriculum and Continuing Education Advisory Committee



Senate Bill 69 (2021)

Definition of Peer Recovery Support Services

Section 5: defines the term “peer recovery support services” to mean nonclinical supportive services that use lived experience in recovery from a substance use disorder or other behavioral health disorder to promote recovery in another person with a substance use disorder or other behavioral health disorder by advocating, mentoring, educating, offering hope and providing assistance in navigating systems.

SB 69 (2021) Senate Bill Enforcement

Section 8: requires:


- (1) an adult to be certified by the Nevada Certification Board, or its successor organization, as a peer recovery support specialist or peer recovery support specialist supervisor before providing or supervising the provision of, as applicable, peer recovery support services for compensation as a regular part of his or her job duties;
- (2) provides for the imposition of a civil penalty against an adult who violates that requirement;
- and
- (3)** authorizes an adult who is not certified to provide peer recovery support services to adults for compensation while the person is acquiring the experience necessary for certification as a peer recovery support specialist.

**** PRSS-I certificate was created in response align with SB 69 (2021).**

Senate Bill 69 (2021): Revisions to PRSS Services

As of August 1, 2023, all individuals receiving compensation for delivering Peer Recovery Support Services must be certified.

Prior to receiving compensation, an individual needs to have the following to achieve a PRSS Intern Certificate:

- HS diploma or equivalency (GED or HiSET)
 - Completed an NCB approved PRSS training
 - Signed a Code of Ethics
 - Pay \$35 application fee
 - Approved PRSS-I application in Certemy
- 

New PRSS Supervisor Certification

As of August 1st, 2023, all individuals who are Supervising Peer Workers must be certified as a PRSS-S in Nevada.

- Completed an NCB approved Peer Supervisor Training
- Pay \$125 application fee
- Approved PRSS-S application in Certemy

Track A: Peers with lived experience	Track B: Non-peers
<p data-bbox="912 722 1302 746">NCB Approved Peer Supervisor Training</p> <p data-bbox="912 798 1391 861">Have been a certified PRSS for at least two years (At first renewal)</p> <p data-bbox="912 915 1340 939">Maximum number of peers to supervise – 8</p> <p data-bbox="912 1022 1314 1046">At a minimum, certified peer supervisors:</p> <p data-bbox="912 1098 1103 1122">ATTESTATION</p> <ul data-bbox="958 1136 1638 1303" style="list-style-type: none">• Must meet with each supervisee biweekly• Meet with the entire group of supervisees monthly• Observations of each supervisee quarterly• Supervision template, mentorship agreement, best practice offered as tool	<p data-bbox="1671 722 2061 746">NCB Approved Peer Supervisor Training</p> <p data-bbox="1671 798 2397 896">A minimum of a bachelor's degree and two years working in the field of behavioral health, OR a master's degree and one year working in the field of behavioral health.</p> <p data-bbox="1671 951 2099 975">Maximum number of peers to supervise – 8</p> <p data-bbox="1671 1058 2074 1082">At a minimum, certified peer supervisors:</p> <p data-bbox="1671 1133 1862 1158">ATTESTATION</p> <ul data-bbox="1717 1172 2397 1339" style="list-style-type: none">• Must meet with each supervisee biweekly• Meet with the entire group of supervisees monthly• Observations of each supervisee quarterly• Supervision template, mentorship agreement, best practice offered as tool

SB 69 (2021): Imposition of Civil Penalties

Section 15 of the bill authorizes the Division to bring an action to enjoin any adult from providing or supervising the provision of peer recovery support services in violation of section 8.

NRS 640E.370 Penalties.

1. A person who violates any provision of this chapter or any regulation adopted pursuant thereto is guilty of a misdemeanor.
2. In addition to any criminal penalty that may be imposed pursuant to subsection 1, the Board may, after notice and hearing, impose a civil penalty of not more than \$100 for each such violation. For the purposes of this subsection, each day on which a violation occurs constitutes a separate offense, except that the aggregate civil penalty that may be imposed against a person pursuant to this subsection may not exceed \$10,000.

Questions?

Contactus@nevadacertboard.org

775-784-1282

Nevadacertboard.org