



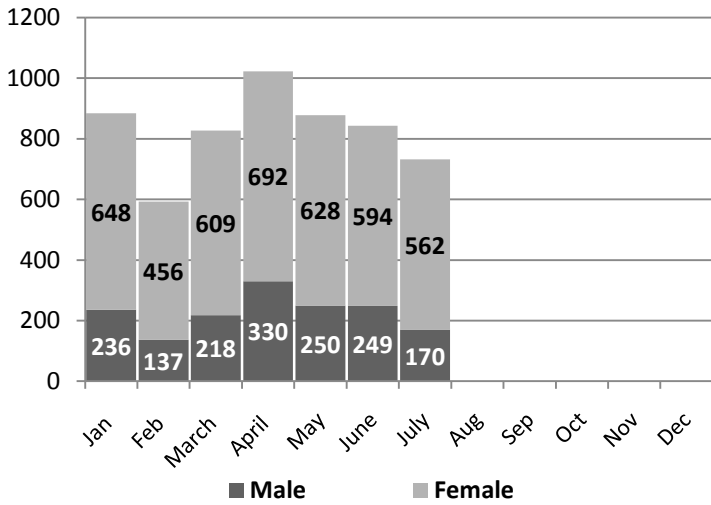
# Nevada Monthly STD Report - GC and CT: JULY 2010

## Chlamydia (CT)

**Table 1: Number of Reported Male and Female CT Cases**

	Total- 2010 Month	YTD	Total- 2009 Month	YTD	YTD % Change
<b>Male</b>	170	1,590	285	1,634	-2.7%
<b>Female</b>	562	4,189	662	4,158	0.7%
<b>Total</b>	732	5,779	947	5,793	-0.2%

**Figure 1: Number of Reported CT Cases by Sex and Month**



**Table 2: Number of Reported CT Cases by Race/Ethnicity**

	Month	%	YTD	YTD % Change
<b>Hispanic</b>	102	14%	997	-1%
<b>AI/AN*</b>	6	1%	41	-44%
<b>API*</b>	19	3%	215	19%
<b>Black</b>	115	16%	1066	-6%
<b>White</b>	176	24%	1229	-13%
<b>Other</b>	314	43%	2232	-26%

**Table 3: Number of Reported CT Cases by Age**

	Month	%	YTD	YTD % Change
<b>0-12</b>	2	0%	10	233%
<b>13-24</b>	492	67%	3,957	-14%
<b>25-34</b>	174	24%	1,392	-21%
<b>35-44</b>	49	7%	306	-7%
<b>45-54</b>	11	2%	82	-13%
<b>55+</b>	2	0%	27	17%
<b>Unknown</b>	2	0%	6	0%

**Table 4: Number of Reported CT Cases by County**

	Month	%	YTD	YTD % Change
<b>Clark</b>	560	77%	4,619	-1%
<b>Washoe</b>	119	16%	816	12%
<b>All Other**</b>	49	7%	326	-14%
<b>Unknown</b>	4	1%	19	27%

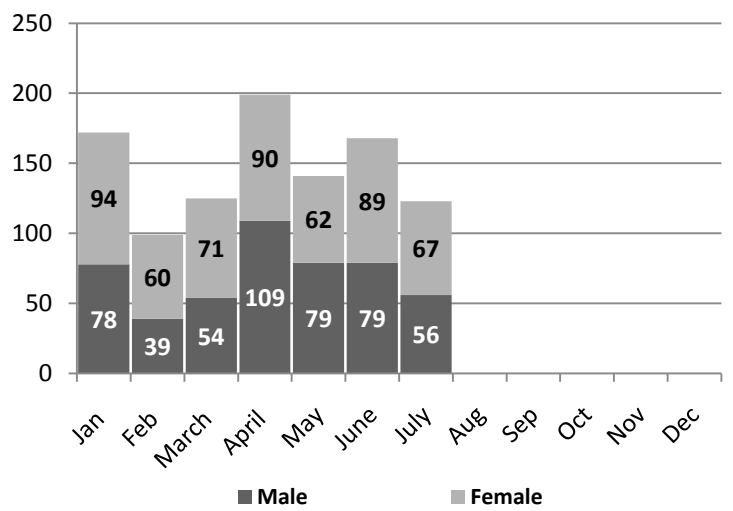
\*API= Asian/Pacific Islander and AI/AN= American Indian/Alaskan Native  
 \*\*All Other Counties include the counties of Carson, Churchill, Douglas, Elko, Esmeralda, Eureka, Humboldt, Lander, Lincoln, Lyon, Mineral, Nye, Pershing, Storey, and White Pine.

## Gonorrhea (GC)

**Table 5: Number of Reported Male and Female GC Cases**

	Total- 2010 Month	YTD	Total- 2009 Month	YTD	YTD % Change
<b>Male</b>	56	494	92	514	-3.9%
<b>Female</b>	67	533	62	489	9.0%
<b>Total</b>	123	1027	154	1003	2.4%

**Figure 2: Number of Reported GC Cases by Sex and Month**



**Table 6: Number of Reported GC Cases by Race/Ethnicity**

	Month	%	YTD	YTD % Change
<b>Hispanic</b>	8	7%	59	-40%
<b>AI/AN*</b>	0	0%	3	-50%
<b>API*</b>	2	2%	21	5%
<b>Black</b>	50	41%	442	11%
<b>White</b>	19	15%	143	-26%
<b>Other</b>	44	36%	359	-22%

**Table 7: Number of Reported GC Cases by Age**

	Month	%	YTD	YTD % Change
<b>0-12</b>	2	2%	4	33%
<b>13-24</b>	78	63%	659	8%
<b>25-34</b>	19	15%	205	-12%
<b>35-44</b>	15	12%	100	-5%
<b>45-54</b>	7	6%	38	0%
<b>55+</b>	2	2%	21	62%
<b>Unknown</b>	0	0%	0	0%

**Table 8: Number of Reported GC Cases by County**

	Month	%	YTD	YTD % Change
<b>Clark</b>	110	89%	968	10%
<b>Washoe</b>	10	8%	45	-46%
<b>All Other**</b>	2	2%	12	-59%
<b>Unknown</b>	1	1%	2	-75%



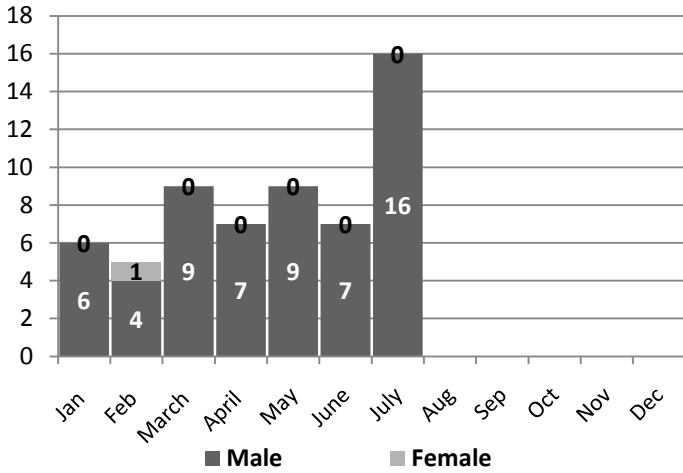
# Nevada Monthly STD Report - Syphilis: JULY 2010

## P&S Syphilis

**Table 9: Number of Reported P&S Syphilis Cases**

	Total- 2010		Total- 2009		YTD % Change
	Month	YTD	Month	YTD	
<b>Male</b>	16	58	4	73	-20.5%
<b>Female</b>	0	1	0	6	-83.3%
<b>Total</b>	16	59	4	79	-25.3%

**Figure 3: Number of Reported P&S Syphilis Cases by Sex and Month**



**Table 10: Number of Reported P&S Syphilis Cases by Race/Ethnicity**

	Month	%	YTD	YTD % Change
<b>Hispanic</b>	5	31%	14	8%
<b>AI/AN*</b>	0	0%	0	0%
<b>API*</b>	0	0%	1	-50%
<b>Black</b>	2	13%	13	-19%
<b>White</b>	9	56%	27	50%
<b>Other</b>	0	0%	4	-50%

**Table 11: Number of Reported P&S Syphilis Cases by Age**

	Month	%	YTD	YTD % Change
<b>0-12</b>	0	0%	0	0%
<b>13-24</b>	3	19%	10	-38%
<b>25-34</b>	7	44%	20	5%
<b>35-44</b>	3	19%	16	45%
<b>45-54</b>	3	19%	11	10%
<b>55+</b>	0	0%	2	100%
<b>Unknown</b>	0	0%	0	0%

**Table 12: Number of Reported P&S Syphilis Cases by County**

	Month	%	YTD	YTD % Change
<b>Clark</b>	16	100%	58	9%
<b>Washoe</b>	0	0%	1	-50%
<b>All Other**</b>	0	0%	0	-100%
<b>Unknown</b>	0	0%	0	0%

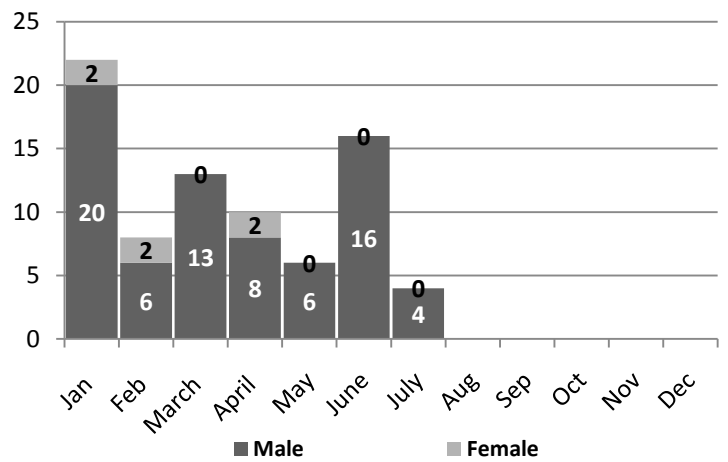
\*API= Asian/Pacific Islander and AI/AN= American Indian/Alaskan Native  
 \*\*All Other Counties include the counties of Carson, Churchill, Douglas, Elko, Esmeralda, Eureka, Humboldt, Lander, Lincoln, Lyon, Mineral, Nye, Pershing, Storey, and White Pine.

## Early Latent Syphilis

**Table 13: Number of Reported Early Latent Cases**

	Total- 2010		Total- 2009		YTD % Change
	Month	YTD	Month	YTD	
<b>Male</b>	12	93	9	61	52.5%
<b>Female</b>	3	11	2	20	-45.0%
<b>Total</b>	15	104	11	81	28.4%

**Figure 4: Number of Reported Early Latent Syphilis Cases by Sex and Month**



**Table 14: Number of Reported Early Latent Syphilis Cases by Race/Ethnicity**

	Month	%	YTD	YTD % Change
<b>Hispanic</b>	5	33%	35	35%
<b>AI/AN*</b>	0	0%	0	0%
<b>API*</b>	0	0%	2	-60%
<b>Black</b>	2	13%	34	79%
<b>White</b>	4	27%	26	37%
<b>Other</b>	4	27%	7	-42%

**Table 15: Number of Reported Early Latent Cases by Age**

	Month	%	YTD	YTD % Change
<b>0-12</b>	0	0%	0	0%
<b>13-24</b>	4	27%	23	64%
<b>25-34</b>	3	20%	32	7%
<b>35-44</b>	5	33%	27	29%
<b>45-54</b>	3	20%	17	13%
<b>55+</b>	0	0%	5	400%
<b>Unknown</b>	0	0%	0	0%

**Table 16: Number of Reported Early Latent Cases by County**

	Month	%	YTD	YTD % Change
<b>Clark</b>	15	100%	103	30%
<b>Washoe</b>	0	0	1	-50%
<b>All Other**</b>	0	0	0	0%
<b>Unknown</b>	0	0	0	0%

# Nevada Monthly STD Report- Cumulative Monthly Trends

Figure 5: Cumulative Number of Chlamydia Cases in Nevada by Month Reported, 2008-2010

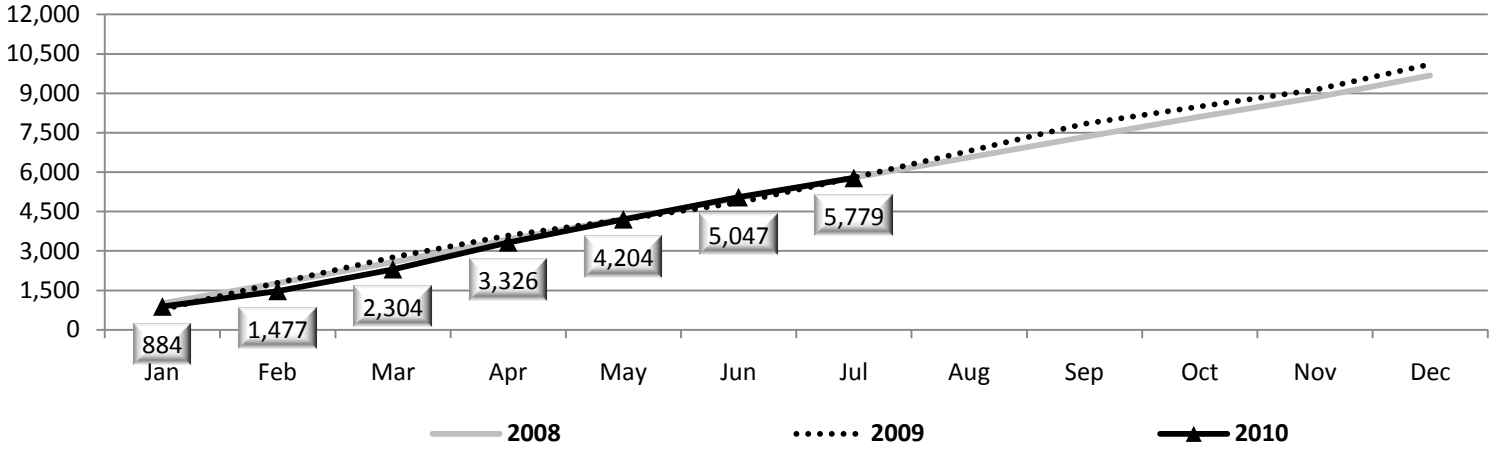


Figure 6: Cumulative Number of Gonorrhea Cases in Nevada by Month Reported, 2008-2010

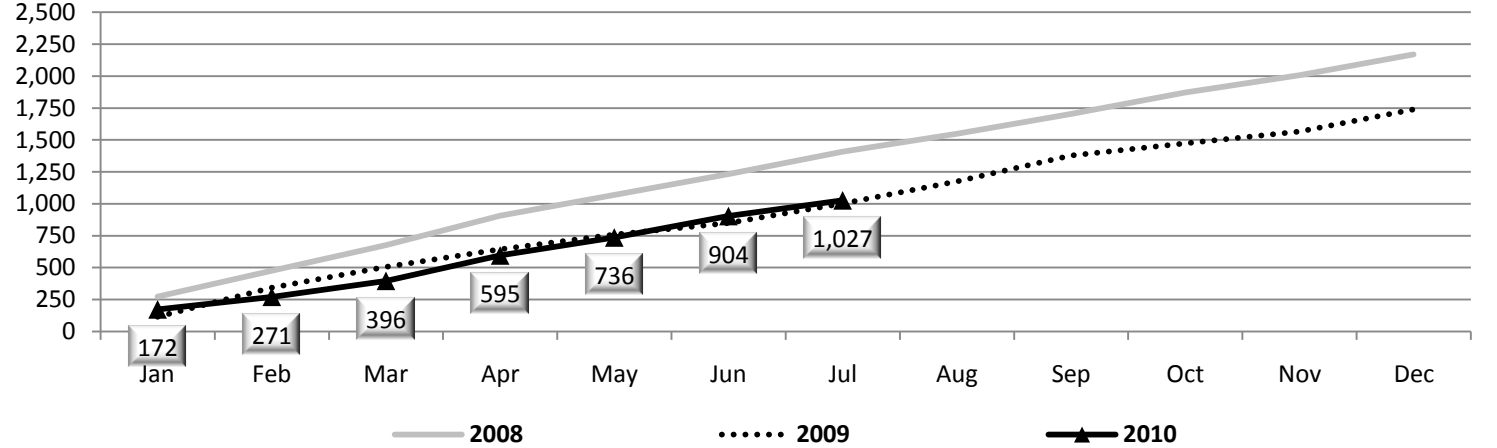


Figure 7: Cumulative Number of Primary & Secondary Syphilis Cases in Nevada by Month Reported, 2008-2010

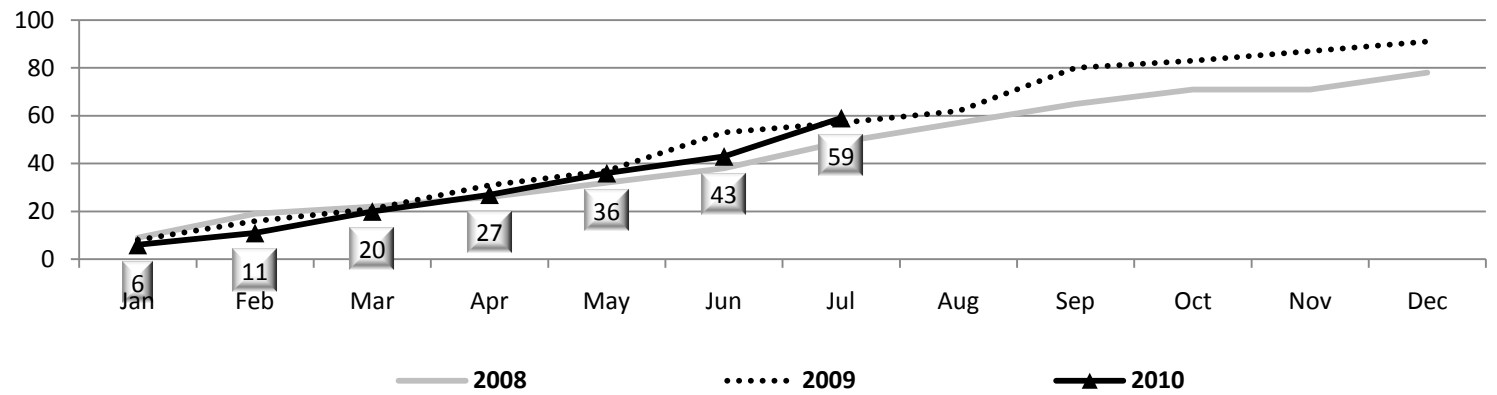


Figure 8: Cumulative Number of Early Latent Syphilis Cases in Nevada by Month Reported, 2008-2010

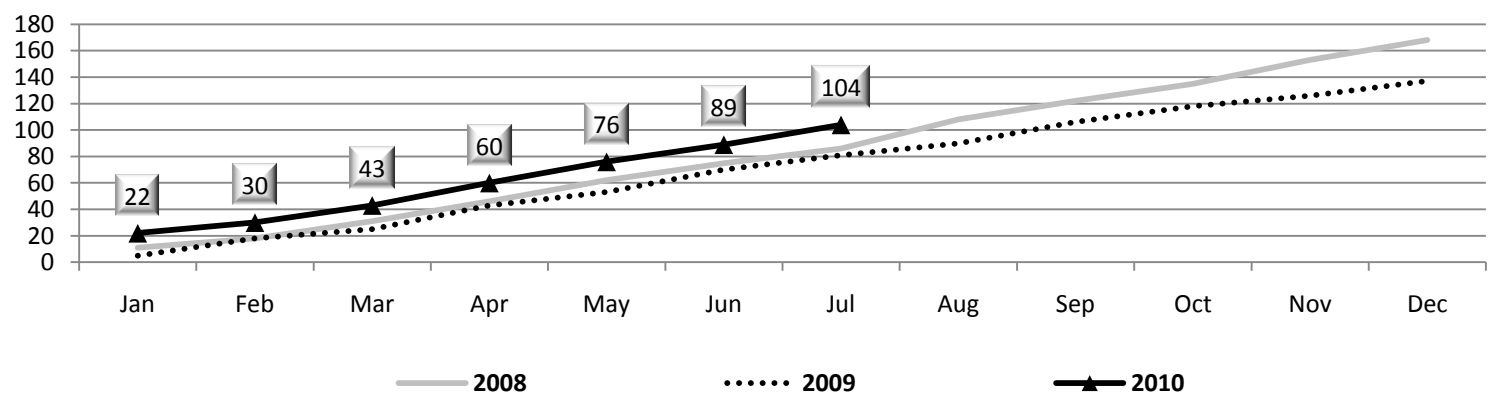


Figure 9: Cumulative Number of Congenital Syphilis Cases in Nevada by Month Reported, 2008-2010

