



Nevada Monthly STD Report - GC and CT: DEC 2010

Chlamydia (CT)

Table 1: Number of Reported Male and Female CT Cases

	Total- 2010 Month	YTD	Total- 2009 Month	YTD	YTD % Change
Male	170	2,600	331	2,957	-12.1%
Female	563	6,830	636	7,142	-4.4%
Total	733	9,430	968	10,101	-6.6%

Figure 1: Number of Reported CT Cases by Sex and Month

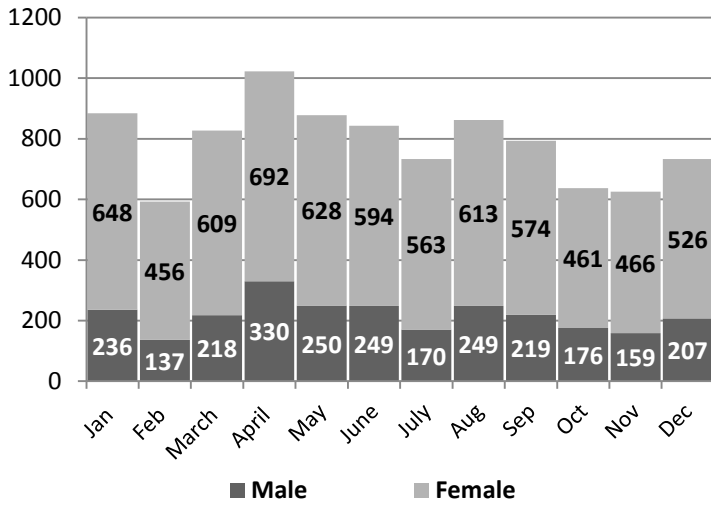


Table 2: Number of Reported CT Cases by Race/Ethnicity

	Month	%	YTD	YTD % Change
Hispanic	131	18%	1,630	5%
AI/AN*	11	2%	83	-16%
API*	12	2%	306	15%
Black	130	18%	1,696	-1%
White	156	21%	2,071	0%
Other	293	40%	3,645	-17%

Table 3: Number of Reported CT Cases by Age

	Month	%	YTD	YTD % Change
0-12	2	0%	15	88%
13-24	487	66%	6,422	-5%
25-34	171	23%	2,251	-13%
35-44	60	8%	562	7%
45-54	10	1%	135	-9%
55+	3	0%	38	-17%
Unknown	0	0%	8	167%

Table 4: Number of Reported CT Cases by County

	Month	%	YTD	YTD % Change
Clark	560	76%	7,363	-10%
Washoe	120	16%	1,429	14%
All Other**	49	7%	613	-1%
Unknown	4	1%	26	-33%

*API= Asian/Pacific Islander and AI/AN= American Indian/Alaskan Native
 **All Other Counties include the counties of Carson, Churchill, Douglas, Elko, Esmeralda, Eureka, Humboldt, Lander, Lincoln, Lyon, Mineral, Nye, Pershing, Storey, and White Pine.

Gonorrhea (GC)

Table 5: Number of Reported Male and Female GC Cases

	Total- 2010 Month	YTD	Total- 2009 Month	YTD	YTD % Change
Male	79	821	99	910	-9.8%
Female	59	824	73	829	-0.6%
Total	138	1645	172	1739	-5.4%

Figure 2: Number of Reported GC Cases by Sex and Month

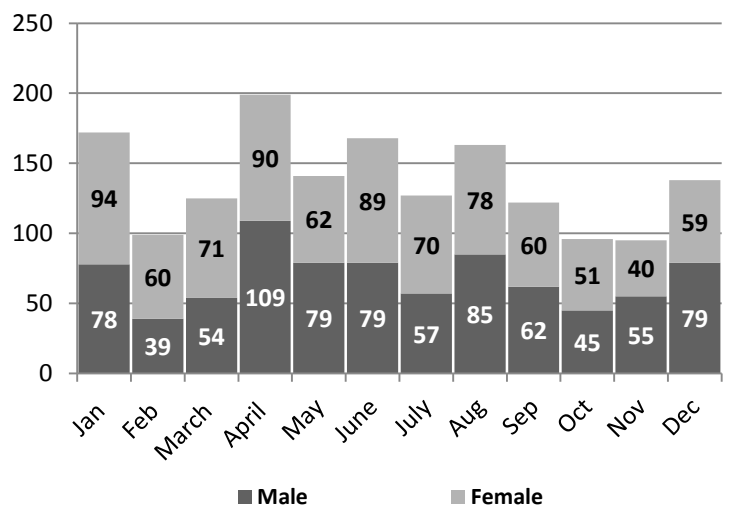


Table 6: Number of Reported GC Cases by Race/Ethnicity

	Month	%	YTD	YTD % Change
Hispanic	19	14%	115	-27%
AI/AN*	0	0%	3	-50%
API*	2	1%	29	-9%
Black	51	37%	670	9%
White	26	19%	259	-6%
Other	40	29%	569	-13%

Table 7: Number of Reported GC Cases by Age

	Month	%	YTD	YTD % Change
0-12	0	0%	7	75%
13-24	73	53%	1014	-3%
25-34	40	29%	349	-15%
35-44	15	11%	171	-10%
45-54	8	6%	73	1%
55+	2	1%	30	50%
Unknown	0	0%	1	-50%

Table 8: Number of Reported GC Cases by County

	Month	%	YTD	YTD % Change
Clark	122	88%	1511	-3%
Washoe	11	8%	100	-25%
All Other**	3	2%	24	-40%
Unknown	2	1%	10	-17%



Nevada Monthly STD Report - Syphilis: DECEMBER 2010

P&S Syphilis

Table 9: Number of Reported P&S Syphilis Cases

	Total- 2010		Total- 2009		YTD % Change
	Month	YTD	Month	YTD	
Male	18	127	4	103	23.3%
Female	3	7	0	10	-30.0%
Total	21	134	4	113	18.6%

Figure 3: Number of Reported P&S Syphilis Cases by Sex and Month

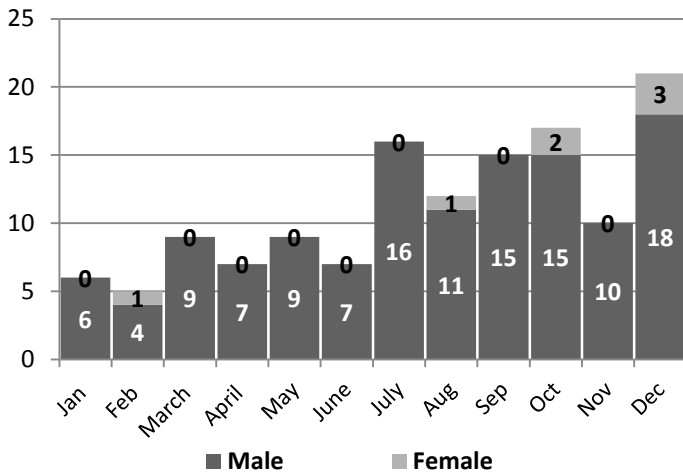


Table 10: Number of Reported P&S Syphilis Cases by Race/Ethnicity

	Month	%	YTD	YTD % Change
Hispanic	5	31%	30	58%
AI/AN*	0	0%	1	0%
API*	0	0%	2	-50%
Black	2	13%	40	54%
White	9	56%	48	66%
Other	0	0%	13	0%

Table 11: Number of Reported P&S Syphilis Cases by Age

	Month	%	YTD	YTD % Change
0-12	0	0%	0	0%
13-24	3	19%	33	27%
25-34	7	44%	46	48%
35-44	3	19%	32	100%
45-54	3	19%	16	7%
55+	0	0%	7	133%
Unknown	0	0%	0	0%

Table 12: Number of Reported P&S Syphilis Cases by County

	Month	%	YTD	YTD % Change
Clark	16	100%	126	47%
Washoe	0	0%	2	-33%
All Other**	0	0%	3	50%
Unknown	0	0%	3	0%

*API= Asian/Pacific Islander and AI/AN= American Indian/Alaskan Native
 **All Other Counties include the counties of Carson, Churchill, Douglas, Elko, Esmeralda, Eureka, Humboldt, Lander, Lincoln, Lyon, Mineral, Nye, Pershing, Storey, and White Pine.

Early Latent Syphilis

Table 13: Number of Reported Early Latent Cases

	Total- 2010		Total- 2009		YTD % Change
	Month	YTD	Month	YTD	
Male	12	162	9	61	165.6%
Female	3	22	2	20	10.0%
Total	15	184	11	81	127.2%

Figure 4: Number of Reported Early Latent Syphilis Cases by Sex and Month

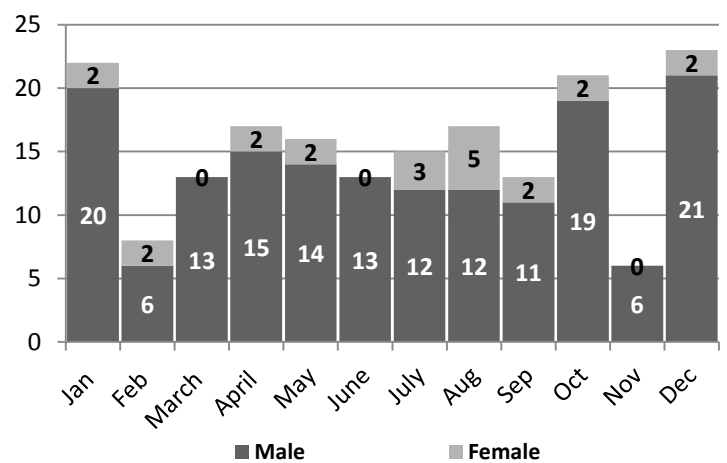


Table 14: Number of Reported Early Latent Syphilis Cases by Race/Ethnicity

	Month	%	YTD	YTD % Change
Hispanic	5	33%	52	33%
AI/AN*	0	0%	0	0%
API*	0	0%	4	-43%
Black	2	13%	59	37%
White	4	27%	54	100%
Other	4	27%	15	-29%

Table 15: Number of Reported Early Latent Cases by Age

	Month	%	YTD	YTD % Change
0-12	0	0%	0	0%
13-24	4	27%	39	-33%
25-34	3	20%	52	-40%
35-44	5	33%	46	-65%
45-54	3	20%	35	-57%
55+	0	0%	12	-75%
Unknown	0	0%	0	0%

Table 16: Number of Reported Early Latent Cases by County

	Month	%	YTD	YTD % Change
Clark	15	100%	180	33%
Washoe	0	0	4	100%
All Other**	0	0	0	0%
Unknown	0	0	0	0%

Nevada Monthly STD Report- Cumulative Monthly Trends

Figure 5: Cumulative Number of Chlamydia Cases in Nevada by Month Reported, 2008-2010

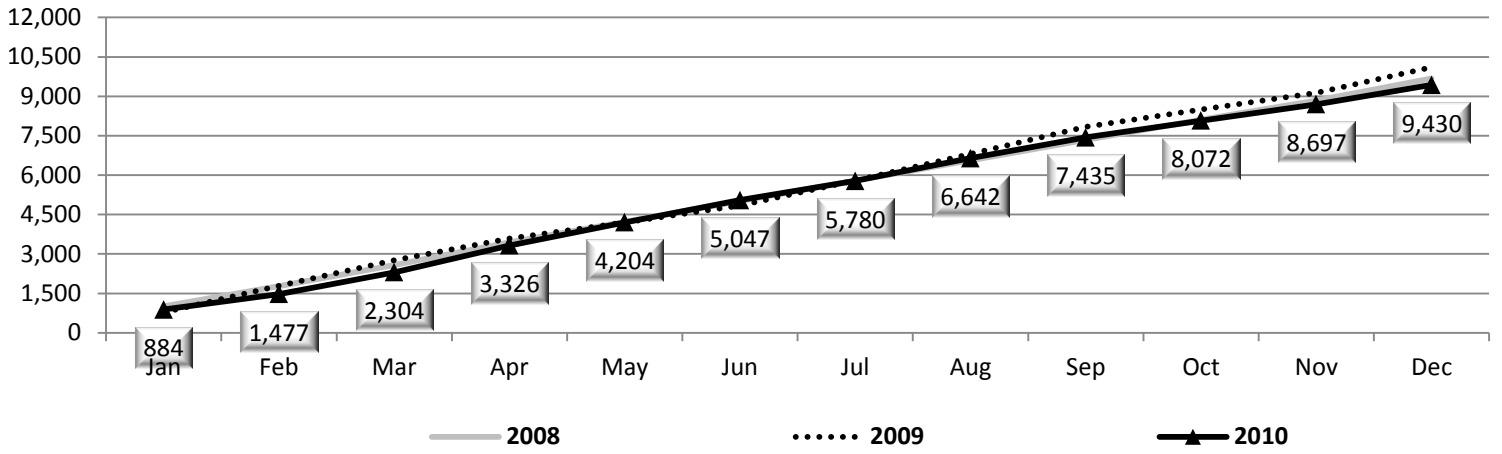


Figure 6: Cumulative Number of Gonorrhea Cases in Nevada by Month Reported, 2008-2010

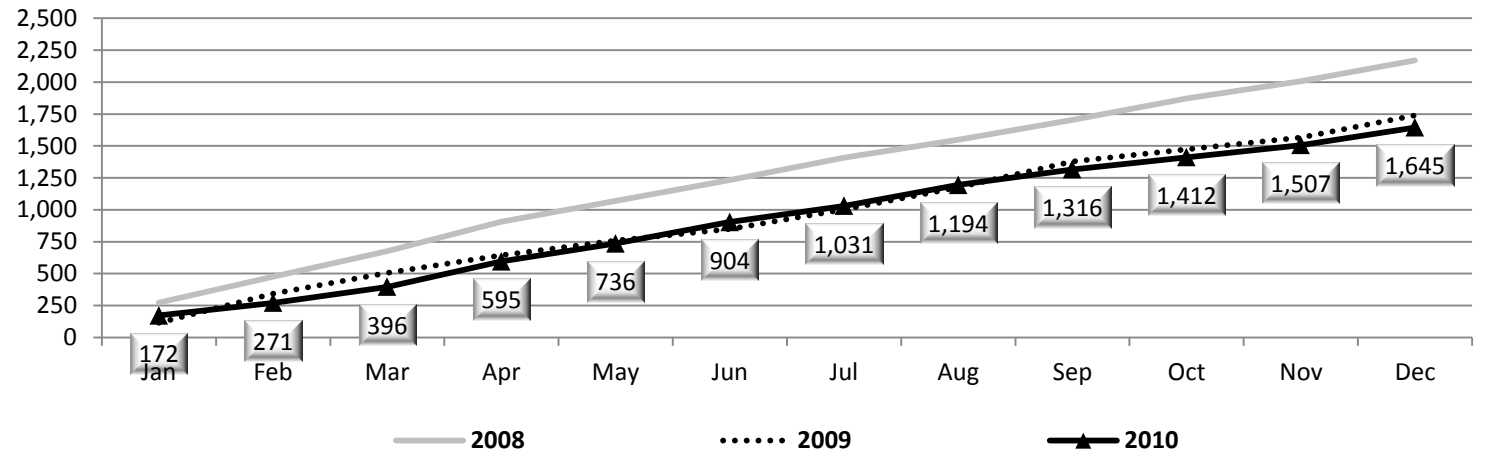


Figure 7: Cumulative Number of Primary & Secondary Syphilis Cases in Nevada by Month Reported, 2008-2010

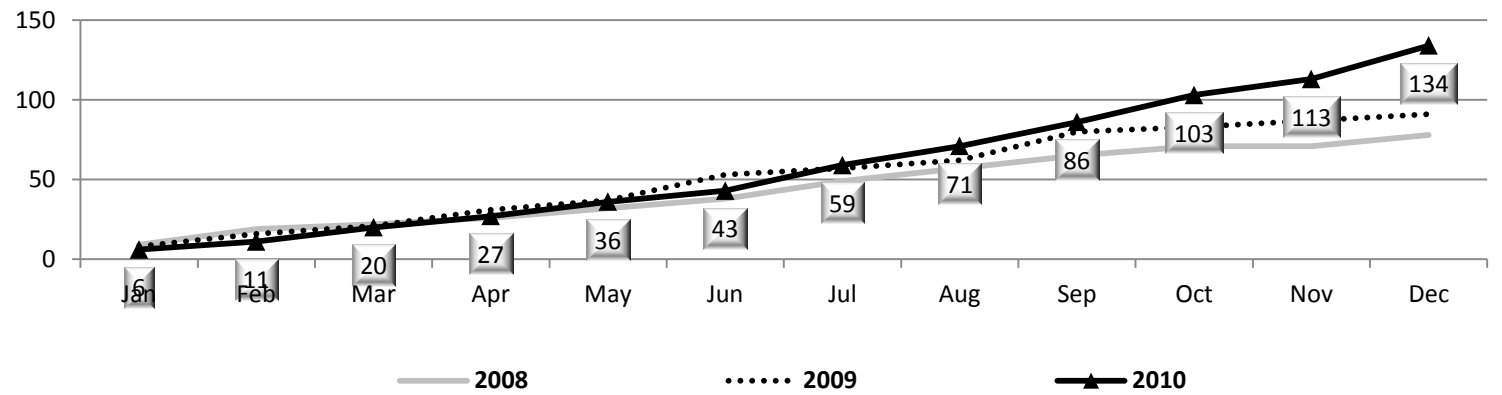


Figure 8: Cumulative Number of Early Latent Syphilis Cases in Nevada by Month Reported, 2008-2010

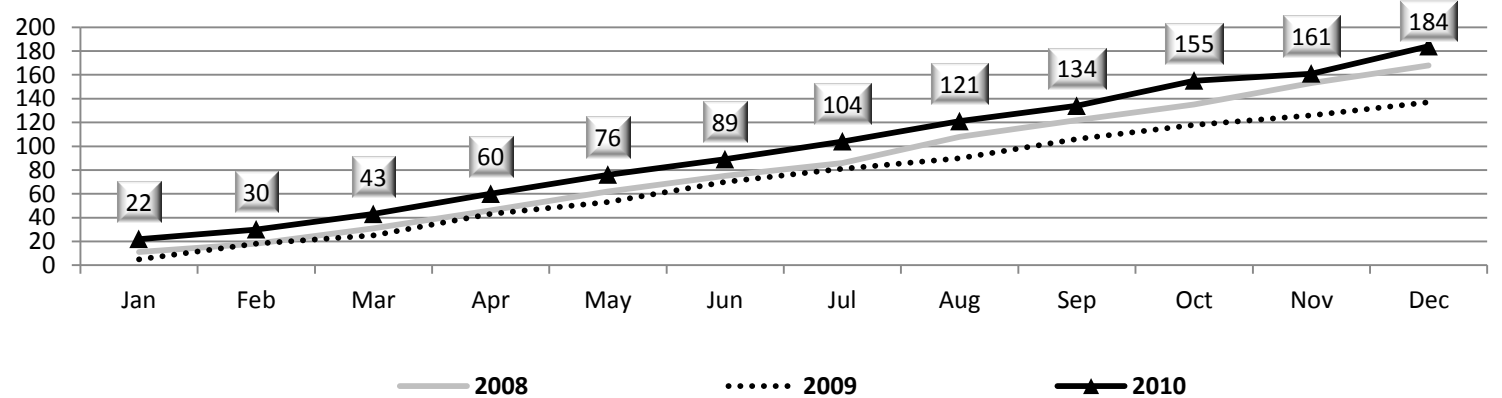


Figure 9: Cumulative Number of Congenital Syphilis Cases in Nevada by Month Reported, 2008-2010

