



# Nevada Quarterly STD Report - GC and CT: *October - December 2011*

## Chlamydia (CT)

Table 1: Number of Reported Male and Female CT Cases

	2011		2010		YTD % Change
	Quarter	YTD	Quarter	YTD	
Male	643	3,302	700	2,901	14%
Female	1,643	7,226	1,564	6,989	3%
<b>Total</b>	<b>2,286</b>	<b>10,528</b>	<b>2,264</b>	<b>9,890</b>	<b>6%</b>

Figure 1: Number of Reported CT Cases by Sex and Month

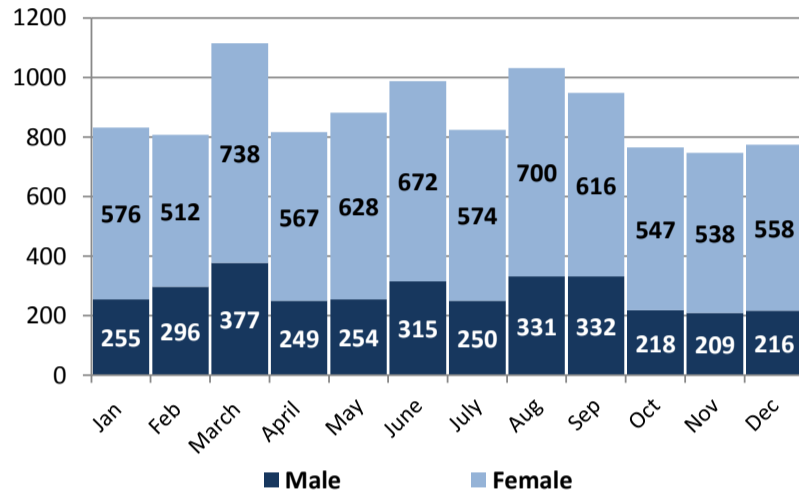


Table 2: Number of Reported CT Cases by Race/Ethnicity

	Quarter	%	YTD	YTD % Change (2010 -2011)
White, non-Hispanic	540	24%	2,296	5%
Black, non-Hispanic	432	19%	2,086	9%
Hispanic	506	22%	2,254	26%
AI/AN*	27	1%	96	12%
API*	24	1%	110	9%
Other	757	33%	3,686	-3%
<b>Total</b>	<b>2,286</b>	<b>100%</b>	<b>10,528</b>	<b>6%</b>

Table 3: Number of Reported CT Cases by Age

	Quarter	%	YTD	YTD % Change (2010 -2011)
<14	22	1%	101	-2%
15-19	712	31%	3,208	1%
20-24	867	38%	3,900	13%
25-29	335	15%	1,680	6%
30-34	170	7%	821	6%
35-39	90	4%	388	-3%
40-44	47	2%	219	2%
45-54	37	2%	157	12%
55-64	6	0%	37	19%
65+	0	0%	13	117%
Unknown	0	0%	4	0%
<b>Total</b>	<b>2,286</b>	<b>100%</b>	<b>10,528</b>	<b>6%</b>

Table 4: Number of Reported CT Cases by County

	Quarter	%	YTD	YTD % Change (2010 -2011)
Clark	1,696	74%	8,336	7%
Washoe	403	18%	1,490	4%
Carson/Douglas/Lyon Counties	96	4%	364	12%
All Other**	88	4%	314	4%
Unknown	3	0%	24	-11%
<b>Total</b>	<b>2,286</b>	<b>100%</b>	<b>10,528</b>	<b>6%</b>

\*API= Asian/Pacific Islander and AI/AN= American Indian/Alaskan Native

\*\*All Other Counties include the counties of Churchill, Elko, Esmeralda, Eureka, Humboldt, Lander, Lincoln, Mineral, Nye, Pershing, Storey, and White Pine.

## Gonorrhea (GC)

Table 5: Number of Reported Male and Female GC Cases

	2011		2010		YTD % Change
	Quarter	YTD	Quarter	YTD	
Male	227	1,130	249	956	18%
Female	209	880	171	849	4%
<b>Total</b>	<b>436</b>	<b>2,010</b>	<b>420</b>	<b>1,805</b>	<b>11%</b>

Figure 2: Number of Reported GC Cases by Sex and Month

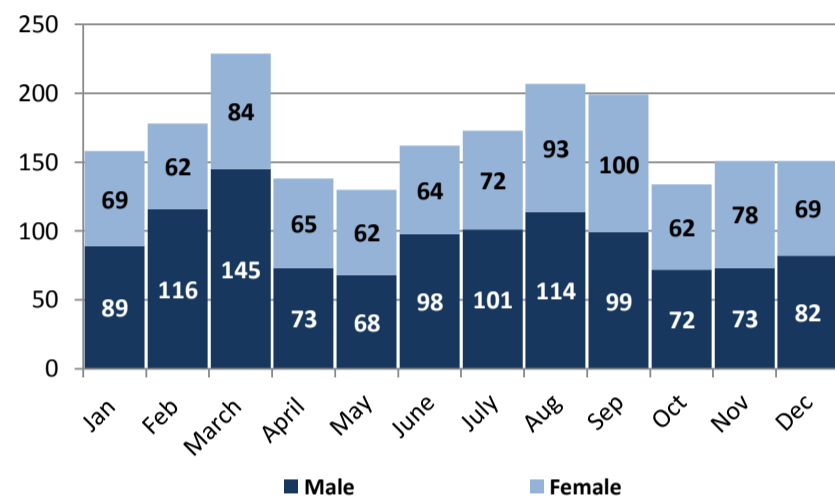


Table 6: Number of Reported GC Cases by Race/Ethnicity

	Quarter	%	YTD	YTD % Change (2010 -2011)
White, non-Hispanic	100	23%	409	43%
Black, non-Hispanic	147	34%	743	-4%
Hispanic	57	13%	261	83%
AI/AN*	7	2%	12	71%
API*	3	1%	13	8%
Other	122	28%	572	-2%
<b>Total</b>	<b>436</b>	<b>100%</b>	<b>2,010</b>	<b>11%</b>

Table 7: Number of Reported GC Cases by Age

	Quarter	%	YTD	YTD % Change (2010 -2011)
<14	7	2%	30	76%
15-19	119	27%	528	-6%
20-24	126	29%	574	7%
25-29	55	13%	316	20%
30-34	48	11%	197	56%
35-39	31	7%	131	19%
40-44	27	6%	109	42%
45-54	21	5%	93	16%
55-64	2	0%	25	14%
65+	0	0%	6	-25%
Unknown	0	0%	1	0%
<b>Total</b>	<b>436</b>	<b>100%</b>	<b>2,010</b>	<b>11%</b>

Table 8: Number of Reported GC Cases by County

	Quarter	%	YTD	YTD % Change (2010 -2011)
Clark	358	82%	1,740	4%
Washoe	69	16%	213	113%
Carson/Douglas/Lyon Counties	6	1%	30	150%
All Other**	2	0%	17	21%
Unknown	1	0%	10	0%
<b>Total</b>	<b>436</b>	<b>100%</b>	<b>2,010</b>	<b>11%</b>



# Nevada Quarterly STD Report - Syphilis: *October - December 2011*

## P&S Syphilis

Table 9: Number of Reported P&S Syphilis Cases

	2011		2010		YTD % Change
	Quarter	YTD	Quarter	YTD	
Male	36	129	42	126	2%
Female	4	7	1	7	0%
<b>Total</b>	<b>40</b>	<b>136</b>	<b>43</b>	<b>133</b>	<b>2%</b>

Figure 3: Number of Reported P&S Syphilis Cases by Sex and Month

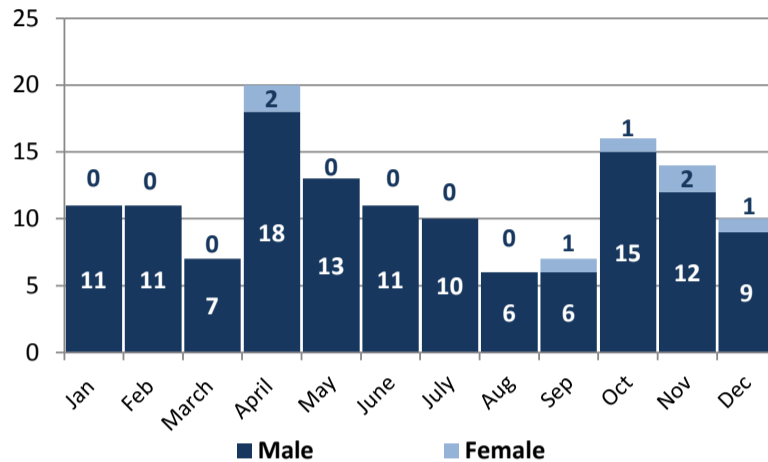


Table 10: Number of Reported P&S Syphilis Cases by Race/Ethnicity

	Quarter	%	YTD	YTD % Change (2010-2011)
White, non-Hispanic	19	48%	59	26%
Black, non-Hispanic	7	18%	30	-25%
Hispanic	6	15%	25	-17%
AI/AN*	0	0%	2	N/A
API*	1	3%	1	N/A
Other	7	18%	19	27%
<b>Total</b>	<b>40</b>	<b>100%</b>	<b>136</b>	<b>2%</b>

Table 11: Number of Reported P&S Syphilis Cases by Age

	Quarter	%	YTD	YTD % Change (2010-2011)
<14	1	3%	1	N/A
15-19	2	5%	7	N/A
20-24	8	20%	27	0%
25-29	6	15%	29	7%
30-34	6	15%	19	0%
35-39	5	13%	13	-13%
40-44	2	5%	13	-19%
45-54	8	20%	23	44%
55-64	1	3%	2	-60%
65+	1	3%	2	N/A
Unknown	0	0%	0	N/A
<b>Total</b>	<b>40</b>	<b>100%</b>	<b>136</b>	<b>2%</b>

Table 12: Number of Reported P&S Syphilis Cases by County

	Quarter	%	YTD	YTD % Change (2010-2011)
Clark	36	90%	126	1%
Washoe	2	5%	8	300%
Carson/Douglas/Lyon Counties	0	0%	0	0%
All Other**	2	5%	2	0%
Unknown	0	0%	0	0%
<b>Total</b>	<b>40</b>	<b>100%</b>	<b>136</b>	<b>2%</b>

\*API= Asian/Pacific Islander and AI/AN= American Indian/Alaskan Native

\*\*All Other Counties include the counties of Churchill, Elko, Esmeralda, Eureka, Humboldt, Lander, Lincoln, Mineral, Nye, Pershing, Storey, and White Pine.

## Early Latent Syphilis

Table 13: Number of Reported Early Latent Cases

	2011		2010		YTD % Change
	Quarter	YTD	Quarter	YTD	
Male	27	143	35	158	-9%
Female	5	24	10	21	14%
<b>Total</b>	<b>32</b>	<b>167</b>	<b>45</b>	<b>179</b>	<b>-7%</b>

Figure 4: Number of Reported Early Latent Syphilis Cases by Sex and Month

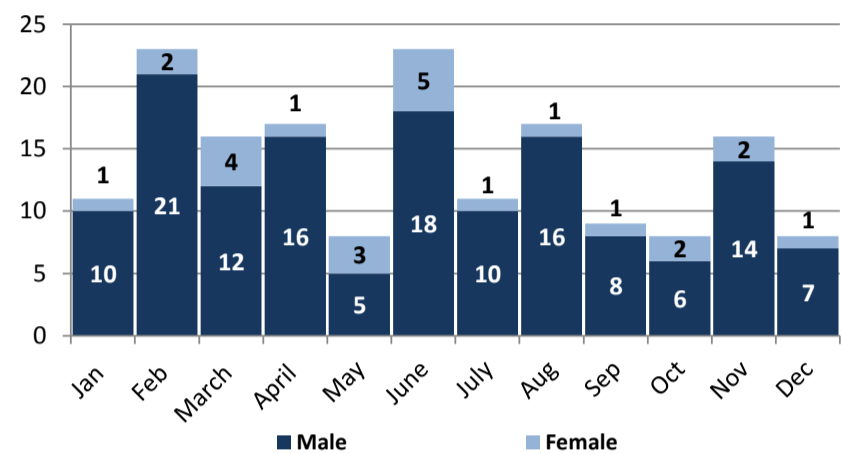


Table 14: Number of Reported Early Latent Syphilis Cases by Race/Ethnicity

	Quarter	%	YTD	YTD % Change (2010-2011)
White, non-Hispanic	10	31%	57	8%
Black, non-Hispanic	8	25%	43	-26%
Hispanic	9	28%	48	-2%
AI/AN*	0	0%	1	N/A
API*	0	0%	1	1%
Other	5	16%	17	-11%
<b>Total</b>	<b>32</b>	<b>100%</b>	<b>167</b>	<b>-7%</b>

Table 15: Number of Reported Early Latent Cases by Age

	Quarter	%	YTD	YTD % Change (2010-2011)
<14	0	0%	0	N/A
15-19	3	9%	9	-18%
20-24	3	9%	27	0%
25-29	7	22%	26	13%
30-34	6	19%	30	11%
35-39	4	13%	17	6%
40-44	2	6%	19	-34%
45-54	5	16%	28	-18%
55-64	2	6%	10	11%
65+	0	0%	1	N/A
Unknown	0	0%	0	N/A
<b>Total</b>	<b>32</b>	<b>100%</b>	<b>167</b>	<b>-7%</b>

Table 16: Number of Reported Early Latent Cases by County

	Quarter	%	YTD	YTD % Change (2010-2011)
Clark	32	100%	163	-7%
Washoe	0	0%	3	-25%
Carson/Douglas/Lyon Counties	0	0%	0	0%
All Other**	0	0%	1	0%
Unknown	0	0%	0	0%
<b>Total</b>	<b>32</b>	<b>100%</b>	<b>167</b>	<b>-7%</b>



## Nevada Monthly STD Report- Cumulative Monthly Trends

Figure 5: Cumulative Number of Chlamydia Cases in Nevada by Month Reported, 2009-2011

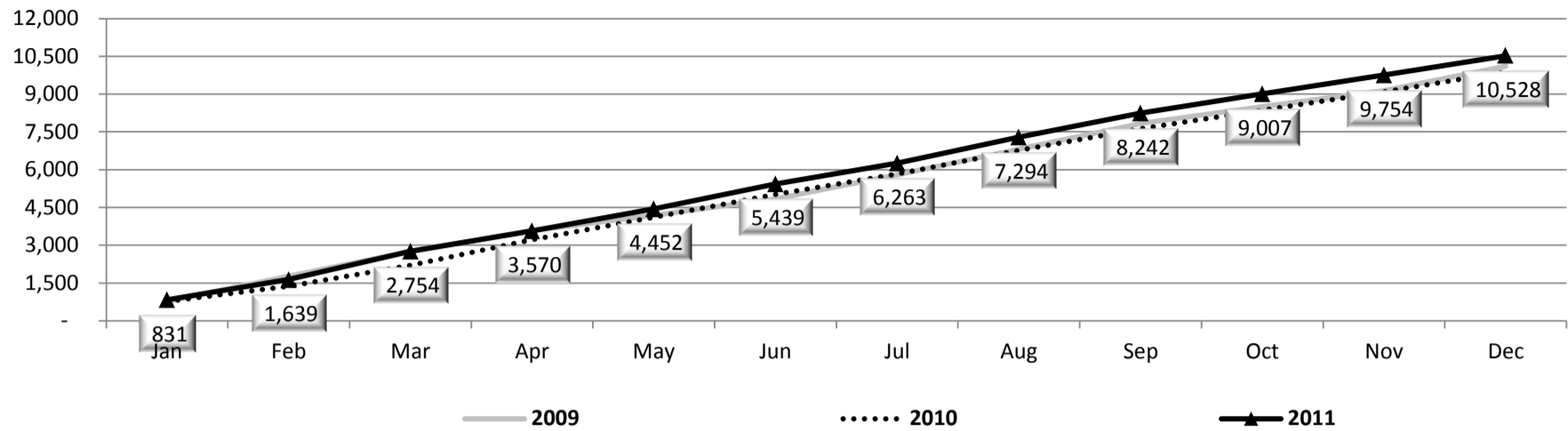


Figure 6: Cumulative Number of Gonorrhea Cases in Nevada by Month Reported, 2009-2011

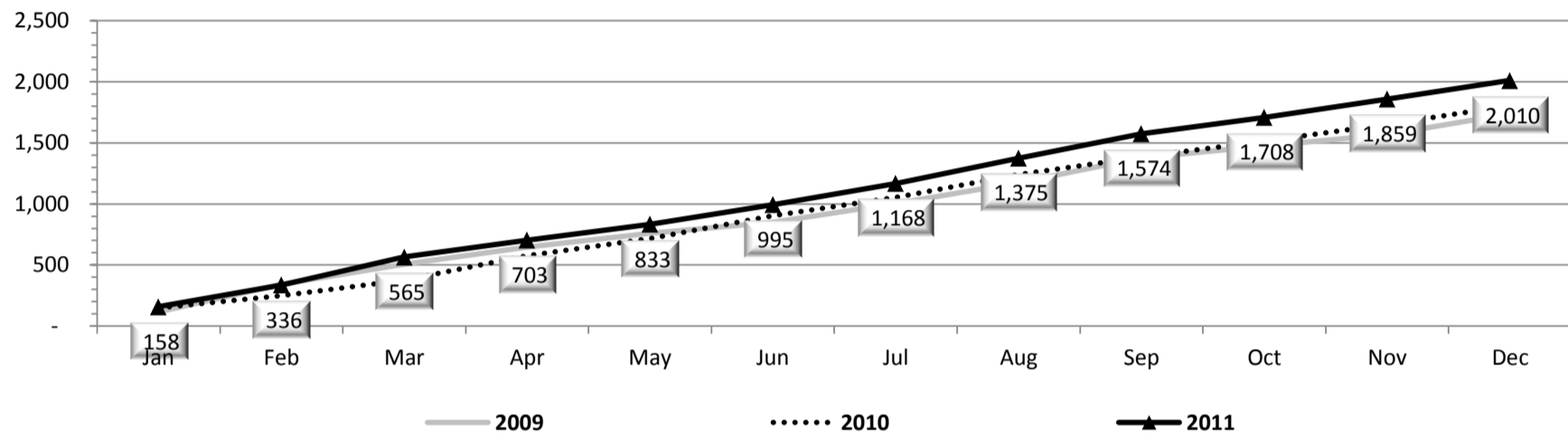


Figure 7: Cumulative Number of Primary & Secondary Syphilis Cases in Nevada by Month Reported, 2009-2011

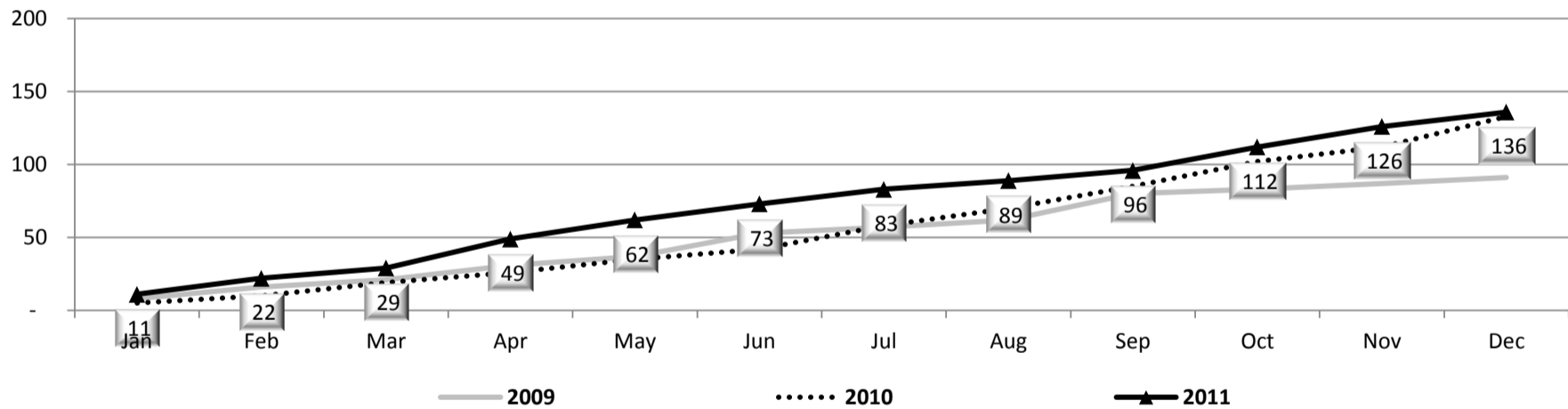
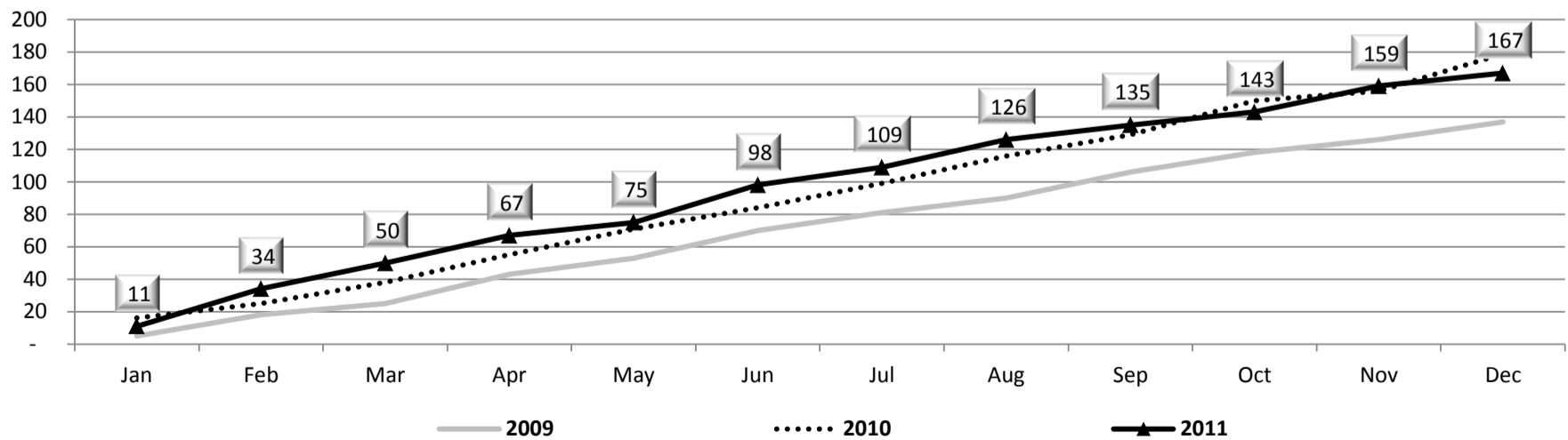


Figure 8: Cumulative Number of Early Latent Syphilis Cases in Nevada by Month Reported, 2009-2011



For more information on STD statistics in Nevada, please visit our website at:  
[http://health.nv.gov/CD\\_HIV\\_STDProgram.htm](http://health.nv.gov/CD_HIV_STDProgram.htm)