



# Nevada Quarterly STD Report - GC and CT: July - September 2011

## Chlamydia (CT)

Table 1: Number of Reported Male and Female CT Cases

	2011		2010		YTD % Change
	Quarter	YTD	Quarter	YTD	
Male	913	2,659	758	2,201	21%
Female	1,890	5,583	1,850	5,425	3%
<b>Total</b>	<b>2,803</b>	<b>8,242</b>	<b>2,608</b>	<b>7,626</b>	<b>8%</b>

Figure 1: Number of Reported CT Cases by Sex and Month

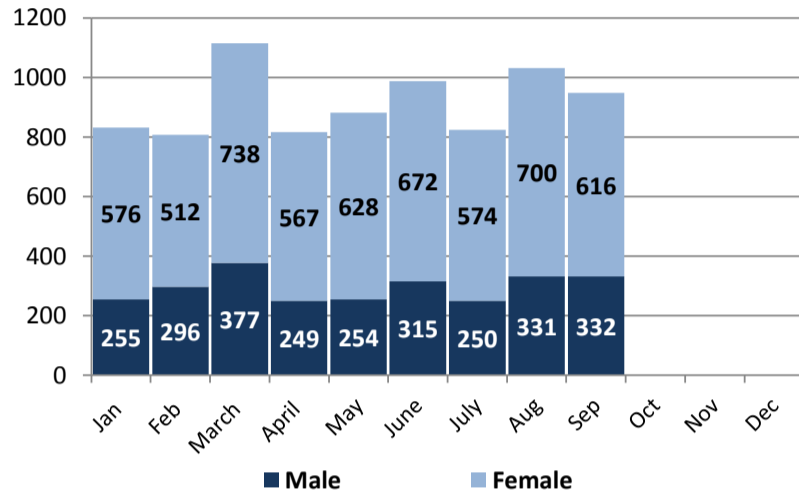


Table 2: Number of Reported CT Cases by Race/Ethnicity

	Quarter	%	YTD	YTD % Change (2010 -2011)
White, non-Hispanic	586	21%	1756	5%
Black, non-Hispanic	557	20%	1654	12%
Hispanic	568	20%	1748	28%
AI/AN*	23	1%	69	17%
API*	31	1%	86	-9%
Other	1038	37%	2929	-1%
<b>Total</b>	<b>2,803</b>	<b>100%</b>	<b>8,242</b>	<b>8%</b>

Table 3: Number of Reported CT Cases by Age

	Quarter	%	YTD	YTD % Change (2010 -2011)
<14	23	1%	79	13%
15-19	840	30%	2,496	2%
20-24	1018	36%	3,033	13%
25-29	467	17%	1,345	12%
30-34	223	8%	651	9%
35-39	109	4%	298	-3%
40-44	51	2%	172	8%
45-54	48	2%	120	9%
55-64	17	1%	31	29%
65+	6	0%	13	160%
Unknown	1	0%	4	0%
<b>Total</b>	<b>2,803</b>	<b>100%</b>	<b>8,242</b>	<b>8%</b>

Table 4: Number of Reported CT Cases by County

	Quarter	%	YTD	YTD % Change (2010 -2011)
Clark	2,222	79%	6,640	9%
Washoe	393	14%	1,087	4%
Carson/Douglas/Lyon Counties	99	4%	268	19%
All Other**	78	3%	226	-6%
Unknown	11	0%	21	-5%
<b>Total</b>	<b>2,803</b>	<b>100%</b>	<b>8,242</b>	<b>8%</b>

\*API= Asian/Pacific Islander and AI/AN= American Indian/Alaskan Native

\*\*All Other Counties include the counties of Churchill, Elko, Esmeralda, Eureka, Humboldt, Lander, Lincoln, Mineral, Nye, Pershing, Storey, and White Pine.

## Gonorrhea (GC)

Table 5: Number of Reported Male and Female GC Cases

	2011		2010		YTD % Change
	Quarter	YTD	Quarter	YTD	
Male	314	903	254	707	28%
Female	265	671	226	678	-1%
<b>Total</b>	<b>579</b>	<b>1,574</b>	<b>480</b>	<b>1,385</b>	<b>14%</b>

Figure 2: Number of Reported GC Cases by Sex and Month

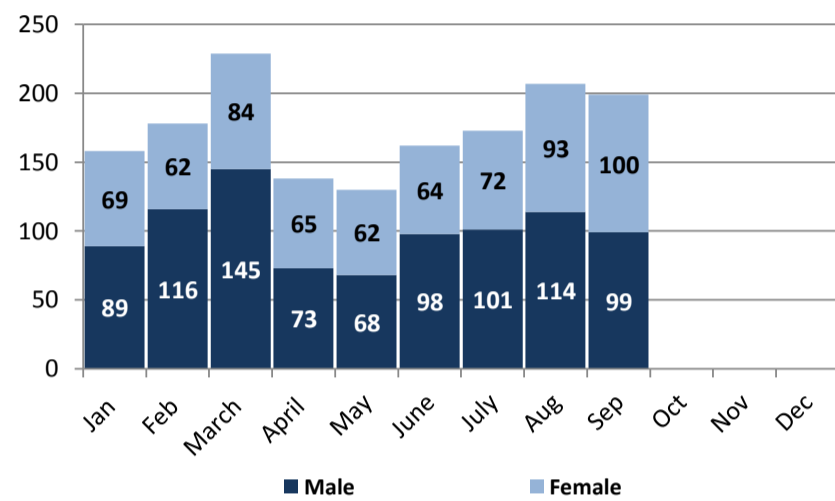


Table 6: Number of Reported GC Cases by Race/Ethnicity

	Quarter	%	YTD	YTD % Change (2010 -2011)
White, non-Hispanic	122	21%	309	51%
Black, non-Hispanic	198	34%	596	-2%
Hispanic	73	13%	204	108%
AI/AN*	2	0%	5	25%
API*	4	1%	10	-9%
Other	180	31%	450	-2%
<b>Total</b>	<b>579</b>	<b>100%</b>	<b>1,574</b>	<b>14%</b>

Table 7: Number of Reported GC Cases by Age

	Quarter	%	YTD	YTD % Change (2010 -2011)
<14	7	1%	23	53%
15-19	148	26%	409	-10%
20-24	166	29%	448	8%
25-29	101	17%	261	39%
30-34	58	10%	149	64%
35-39	38	7%	100	19%
40-44	23	4%	82	39%
45-54	28	5%	72	36%
55-64	6	1%	23	28%
65+	4	1%	6	-14%
Unknown	0	0%	1	0%
<b>Total</b>	<b>579</b>	<b>100%</b>	<b>1,574</b>	<b>14%</b>

Table 8: Number of Reported GC Cases by County

	Quarter	%	YTD	YTD % Change (2010 -2011)
Clark	479	83%	1,382	7%
Washoe	77	13%	144	112%
Carson/Douglas/Lyon Counties	15	3%	24	167%
All Other**	5	1%	15	88%
Unknown	3	1%	9	0%
<b>Total</b>	<b>579</b>	<b>100%</b>	<b>1,574</b>	<b>14%</b>

Report Prepared October 2011  
Report data through September 30, 2011



# Nevada Quarterly STD Report - Syphilis: July - September 2011

## P&S Syphilis

Table 9: Number of Reported P&S Syphilis Cases

	2011		2010		YTD % Change
	Quarter	YTD	Quarter	YTD	
Male	22	93	42	83	12%
Female	1	3	1	2	50%
<b>Total</b>	<b>23</b>	<b>96</b>	<b>43</b>	<b>85</b>	<b>13%</b>

Figure 3: Number of Reported P&S Syphilis Cases by Sex and Month

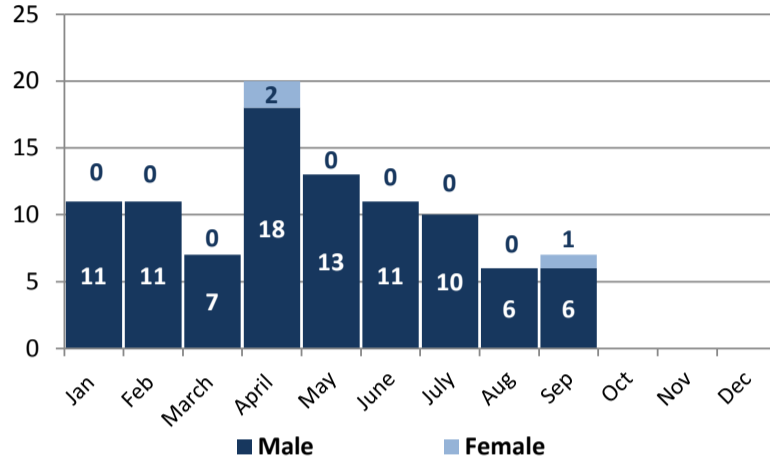


Table 10: Number of Reported P&S Syphilis Cases by Race/Ethnicity

	Quarter	%	YTD	YTD % Change (2010-2011)
White, non-Hispanic	11	48%	40	8%
Black, non-Hispanic	6	26%	23	15%
Hispanic	2	9%	19	-5%
AI/AN*	1	4%	2	N/A
API*	0	0%	0	N/A
Other	3	13%	12	50%
<b>Total</b>	<b>23</b>	<b>100%</b>	<b>96</b>	<b>13%</b>

Table 11: Number of Reported P&S Syphilis Cases by Age

	Quarter	%	YTD	YTD % Change (2010-2011)
<14	0	0%	0	N/A
15-19	0	0%	5	N/A
20-24	4	17%	19	12%
25-29	5	22%	23	64%
30-34	6	26%	13	-13%
35-39	3	13%	8	-11%
40-44	2	9%	11	0%
45-54	3	13%	15	15%
55-64	0	0%	1	-67%
65+	0	0%	1	N/A
Unknown	0	0%	0	N/A
<b>Total</b>	<b>23</b>	<b>100%</b>	<b>96</b>	<b>13%</b>

Table 12: Number of Reported P&S Syphilis Cases by County

	Quarter	%	YTD	YTD % Change (2010-2011)
Clark	21	91%	90	11%
Washoe	2	9%	6	500%
Carson/Douglas/Lyon Counties	0	0%	0	0%
All Other**	0	0%	0	0%
Unknown	0	0%	0	0%
<b>Total</b>	<b>23</b>	<b>100%</b>	<b>96</b>	<b>13%</b>

\*API= Asian/Pacific Islander and AI/AN= American Indian/Alaskan Native

\*\*All Other Counties include the counties of Churchill, Elko, Esmeralda, Eureka, Humboldt, Lander, Lincoln, Mineral, Nye, Pershing, Storey, and White Pine.

## Early Latent Syphilis

Table 13: Number of Reported Early Latent Cases

	2011		2010		YTD % Change
	Quarter	YTD	Quarter	YTD	
Male	34	116	35	112	4%
Female	3	19	10	17	12%
<b>Total</b>	<b>37</b>	<b>135</b>	<b>45</b>	<b>129</b>	<b>5%</b>

Figure 4: Number of Reported Early Latent Syphilis Cases by Sex and Month

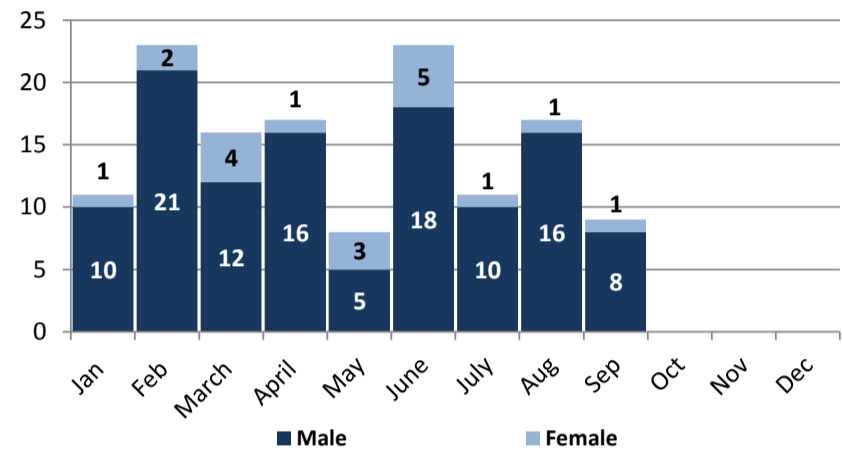


Table 14: Number of Reported Early Latent Syphilis Cases by Race/Ethnicity

	Quarter	%	YTD	YTD % Change (2010-2011)
White, non-Hispanic	13	35%	47	34%
Black, non-Hispanic	11	30%	35	-20%
Hispanic	10	27%	39	5%
AI/AN*	0	0%	1	N/A
API*	1	3%	1	1%
Other	2	5%	12	-8%
<b>Total</b>	<b>37</b>	<b>100%</b>	<b>135</b>	<b>5%</b>

Table 15: Number of Reported Early Latent Cases by Age

	Quarter	%	YTD	YTD % Change (2010-2011)
<14	0	0%	0	N/A
15-19	1	3%	6	-33%
20-24	8	22%	24	4%
25-29	4	11%	19	27%
30-34	5	14%	24	4%
35-39	7	19%	13	0%
40-44	6	16%	17	0%
45-54	4	11%	23	10%
55-64	2	5%	8	14%
65+	0	0%	1	N/A
Unknown	0	0%	0	N/A
<b>Total</b>	<b>37</b>	<b>100%</b>	<b>135</b>	<b>5%</b>

Table 16: Number of Reported Early Latent Cases by County

	Quarter	%	YTD	YTD % Change (2010-2011)
Clark	36	97%	131	4%
Washoe	1	3%	3	0%
Carson/Douglas/Lyon Counties	0	0%	0	0%
All Other**	0	0%	1	0%
Unknown	0	0%	0	0%
<b>Total</b>	<b>37</b>	<b>100%</b>	<b>135</b>	<b>5%</b>



## Nevada Monthly STD Report- Cumulative Monthly Trends

Figure 5: Cumulative Number of Chlamydia Cases in Nevada by Month Reported, 2009-2011

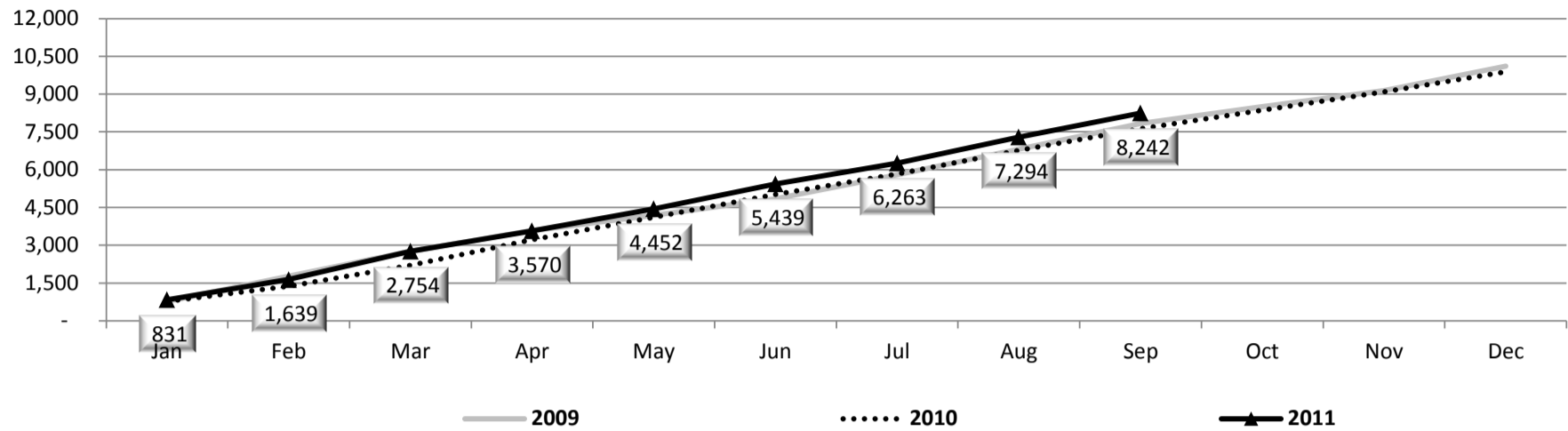


Figure 6: Cumulative Number of Gonorrhea Cases in Nevada by Month Reported, 2009-2011

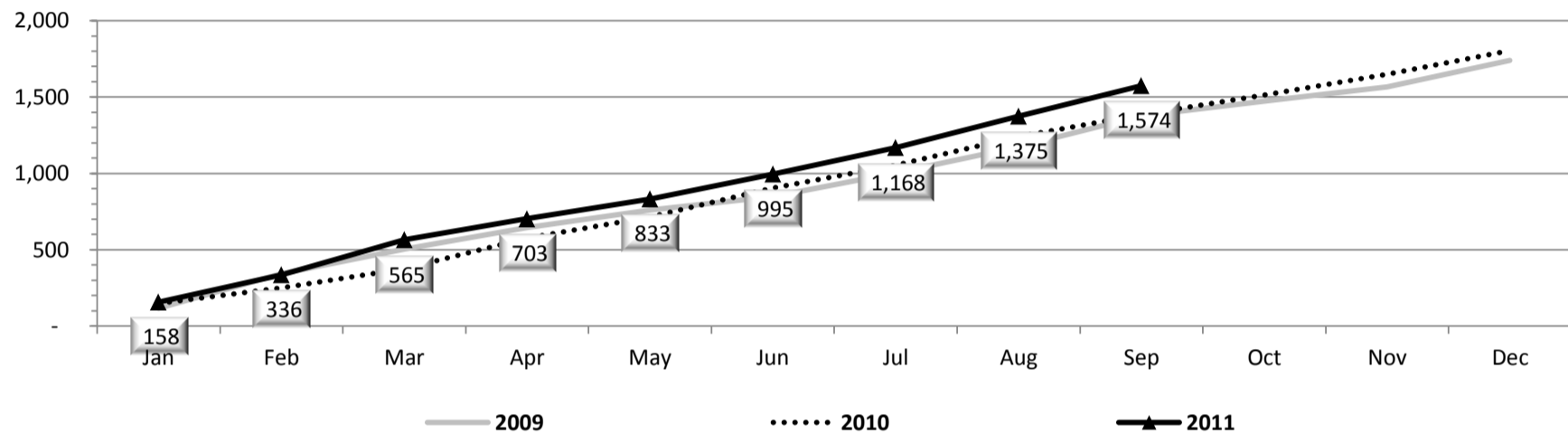


Figure 7: Cumulative Number of Primary & Secondary Syphilis Cases in Nevada by Month Reported, 2009-2011

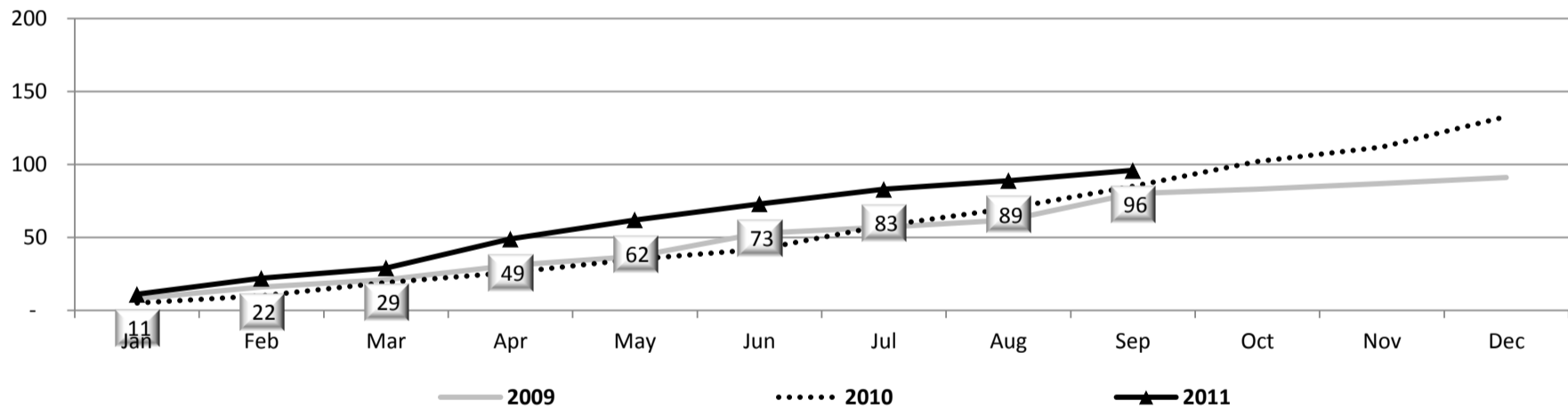
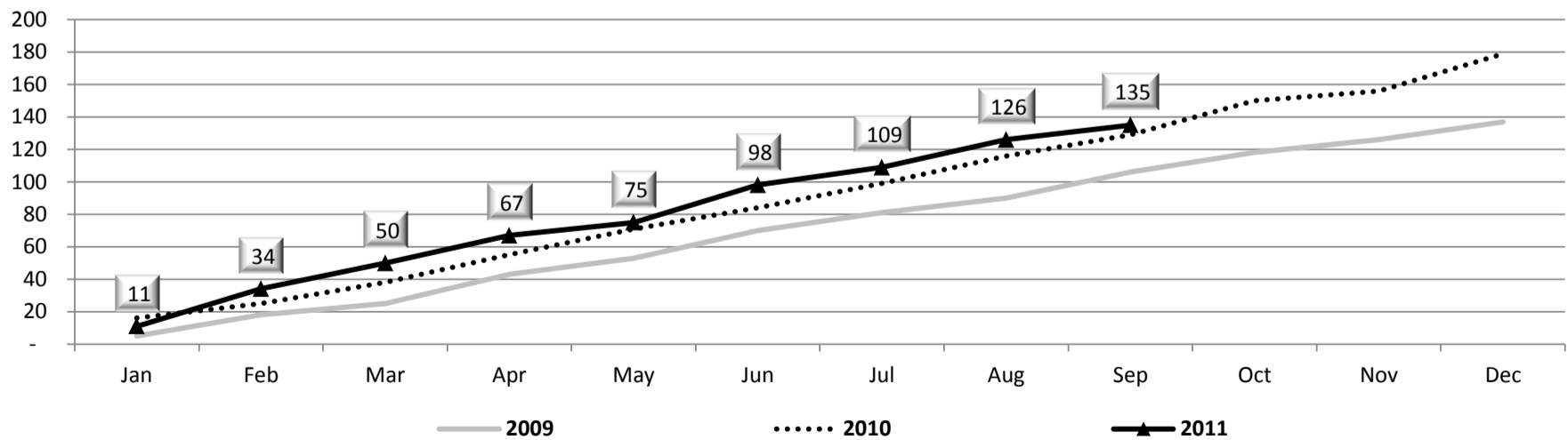


Figure 8: Cumulative Number of Early Latent Syphilis Cases in Nevada by Month Reported, 2009-2011



For more information on STD statistics in Nevada, please visit our website at:  
[http://health.nv.gov/CD\\_HIV\\_STDProgram.htm](http://health.nv.gov/CD_HIV_STDProgram.htm)