



Nevada Quarterly STD Report - GC and CT: April - June 2011

Chlamydia (CT)

Table 1: Number of Reported Male and Female CT Cases

	2011		2010		YTD % Change
	Quarter	YTD	Quarter	YTD	
Male	818	1,746	873	1,443	21%
Female	1,867	3,693	1,948	3,575	3%
Total	2,685	5,439	2,821	5,018	8%

Figure 1: Number of Reported CT Cases by Sex and Month

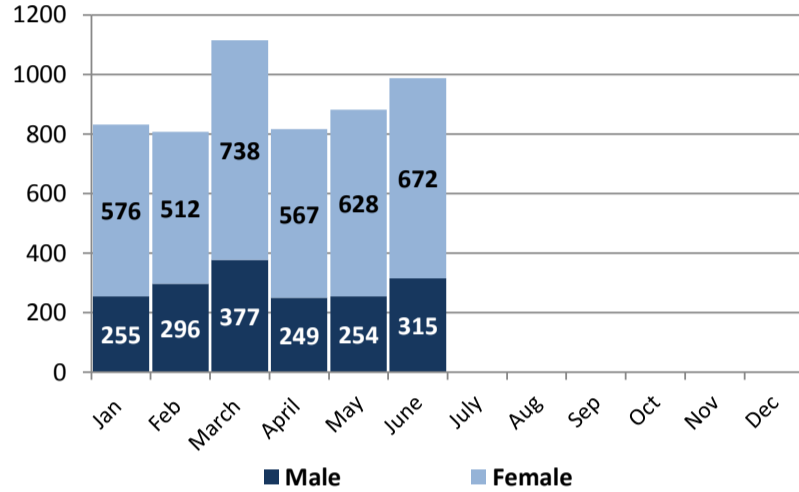


Table 2: Number of Reported CT Cases by Race/Ethnicity

	Quarter	%	YTD	YTD % Change (2010 -2011)
White, non-Hispanic	593	22%	1,170	10%
Black, non-Hispanic	527	20%	1,097	14%
Hispanic	606	23%	1,180	29%
AI/AN*	31	1%	46	31%
API*	24	1%	55	-21%
Other	904	34%	1,891	-4%
Total	2,685	100%	5,439	8%

Table 3: Number of Reported CT Cases by Age

	Quarter	%	YTD	YTD % Change (2010 -2011)
<14	28	1%	56	17%
15-19	785	29%	1,656	2%
20-24	1,042	39%	2,015	14%
25-29	417	16%	878	7%
30-34	216	8%	428	11%
35-39	88	3%	189	15%
40-44	57	2%	121	27%
45-54	39	1%	72	1%
55-64	6	0%	14	-30%
65+	5	0%	7	75%
Unknown	2	0%	3	0%
Total	2,685	100%	5,439	8%

Table 4: Number of Reported CT Cases by County

	Quarter	%	YTD	YTD % Change (2010 -2011)
Clark	2,182	81%	4,418	10%
Washoe	349	13%	694	0%
Carson/Douglas/Lyon Counties	73	3%	169	31%
All Other**	76	3%	148	-6%
Unknown	5	0%	10	-33%
Total	2,685	100%	5,439	8%

*API= Asian/Pacific Islander and AI/AN= American Indian/Alaskan Native

**All Other Counties include the counties of Churchill, Elko, Esmeralda, Eureka, Humboldt, Lander, Lincoln, Mineral, Nye, Pershing, Storey, and White Pine.

Gonorrhea (GC)

Table 5: Number of Reported Male and Female GC Cases

	2011		2010		YTD % Change
	Quarter	YTD	Quarter	YTD	
Male	239	589	286	453	30%
Female	191	406	243	452	-10%
Total	430	995	529	905	10%

Figure 2: Number of Reported GC Cases by Sex and Month

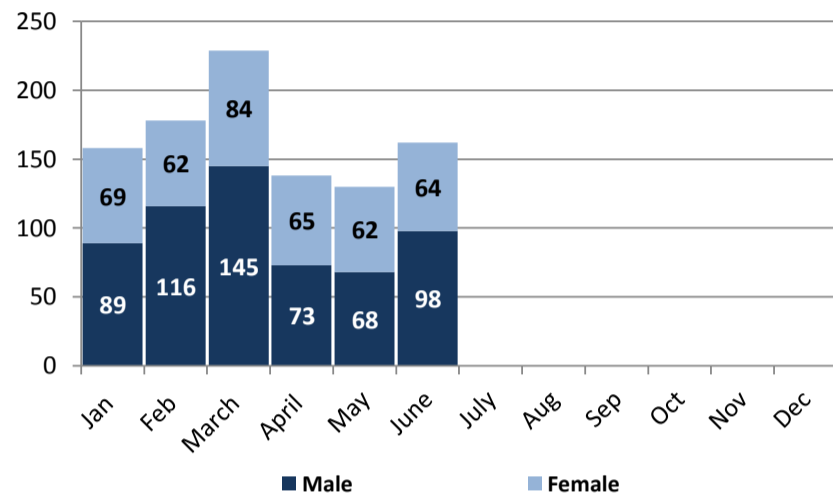


Table 6: Number of Reported GC Cases by Race/Ethnicity

	Quarter	%	YTD	YTD % Change (2010 -2011)
White, non-Hispanic	90	21%	187	51%
Black, non-Hispanic	162	38%	398	1%
Hispanic	42	10%	131	130%
AI/AN*	1	0%	3	0%
API*	2	0%	6	-25%
Other	133	31%	270	-15%
Total	430	100%	995	10%

Table 7: Number of Reported GC Cases by Age

	Quarter	%	YTD	YTD % Change (2010 -2011)
<14	10	2%	16	129%
15-19	109	25%	261	-13%
20-24	120	28%	282	3%
25-29	61	14%	160	29%
30-34	45	10%	91	40%
35-39	37	9%	62	22%
40-44	20	5%	59	69%
45-54	20	5%	44	42%
55-64	8	2%	17	21%
65+	0	0%	2	-33%
Unknown	0	0%	1	0%
Total	430	100%	995	10%

Table 8: Number of Reported GC Cases by County

	Quarter	%	YTD	YTD % Change (2010 -2011)
Clark	384	89%	903	5%
Washoe	30	7%	67	91%
Carson/Douglas/Lyon Counties	6	1%	9	50%
All Other**	8	2%	10	150%
Unknown	2	0%	6	0%
Total	430	100%	995	10%



Nevada Quarterly STD Report - Syphilis: April - June 2011

P&S Syphilis

Table 9: Number of Reported P&S Syphilis Cases

	2011		2010		YTD % Change
	Quarter	YTD	Quarter	YTD	
Male	42	71	23	41	73%
Female	2	2	0	1	100%
Total	44	73	23	42	74%

Figure 3: Number of Reported P&S Syphilis Cases by Sex and Month

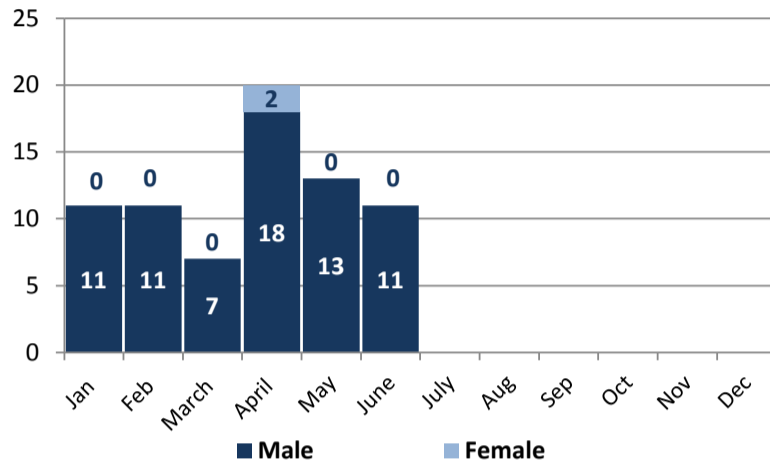


Table 10: Number of Reported P&S Syphilis Cases by Race/Ethnicity

	Quarter	%	YTD	YTD % Change (2010-2011)
White, non-Hispanic	17	39%	29	71%
Black, non-Hispanic	8	18%	17	55%
Hispanic	12	27%	17	89%
AI/AN*	1	2%	1	N/A
API*	0	0%	0	N/A
Other	6	14%	9	80%
Total	44	100%	73	74%

Table 11: Number of Reported P&S Syphilis Cases by Age

	Quarter	%	YTD	YTD % Change (2010-2011)
<14	0	0%	0	N/A
15-19	2	5%	5	N/A
20-24	11	25%	15	114%
25-29	11	25%	18	125%
30-34	3	7%	7	40%
35-39	4	9%	5	-17%
40-44	4	9%	9	50%
45-54	7	16%	12	50%
55-64	1	2%	1	-50%
65+	1	2%	1	N/A
Unknown	0	0%	0	N/A
Total	44	100%	73	74%

Table 12: Number of Reported P&S Syphilis Cases by County

	Quarter	%	YTD	YTD % Change (2010-2011)
Clark	41	93%	69	73%
Washoe	3	7%	4	300%
Carson/Douglas/Lyon Counties	0	0%	0	0%
All Other**	0	0%	0	0%
Unknown	0	0%	0	0%
Total	44	100%	73	74%

*API= Asian/Pacific Islander and AI/AN= American Indian/Alaskan Native

**All Other Counties include the counties of Churchill, Elko, Esmeralda, Eureka, Humboldt, Lander, Lincoln, Mineral, Nye, Pershing, Storey, and White Pine.

Early Latent Syphilis

Table 13: Number of Reported Early Latent Cases

	2011		2010		YTD % Change
	Quarter	YTD	Quarter	YTD	
Male	39	82	42	77	6%
Female	9	16	4	7	129%
Total	48	98	46	84	17%

Figure 4: Number of Reported Early Latent Syphilis Cases by Sex and Month

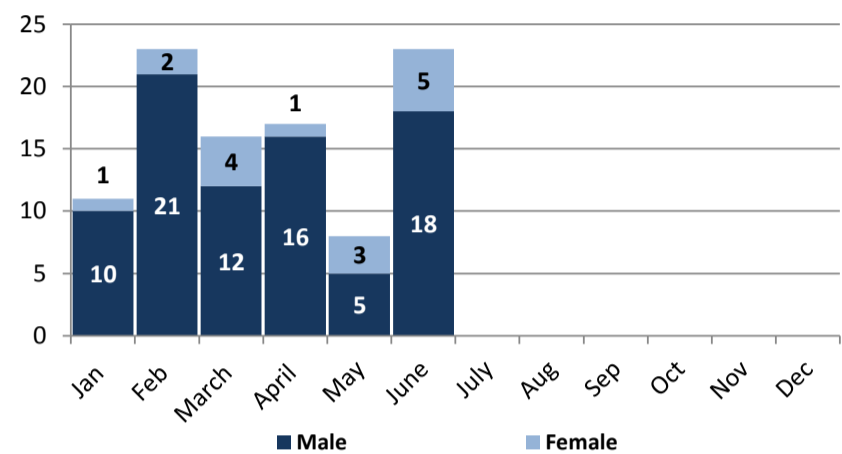


Table 14: Number of Reported Early Latent Syphilis Cases by Race/Ethnicity

	Quarter	%	YTD	YTD % Change (2010-2011)
White, non-Hispanic	18	38%	34	62%
Black, non-Hispanic	12	25%	24	-23%
Hispanic	11	23%	29	7%
AI/AN*	1	2%	1	N/A
API*	0	0%	0	0%
Other	6	13%	10	100%
Total	48	100%	98	17%

Table 15: Number of Reported Early Latent Cases by Age

	Quarter	%	YTD	YTD % Change (2010-2011)
<14	0	0%	0	N/A
15-19	3	6%	5	-17%
20-24	10	21%	16	33%
25-29	10	21%	15	36%
30-34	9	19%	19	19%
35-39	1	2%	6	-25%
40-44	4	8%	11	-15%
45-54	10	21%	19	46%
55-64	1	2%	6	20%
65+	0	0%	1	N/A
Unknown	0	0%	0	N/A
Total	48	100%	98	17%

Table 16: Number of Reported Early Latent Cases by County

	Quarter	%	YTD	YTD % Change (2010-2011)
Clark	46	96%	95	14%
Washoe	1	2%	2	100%
Carson/Douglas/Lyon Counties	0	0%	0	0%
All Other**	1	2%	1	0%
Unknown	0	0%	0	0%
Total	48	100%	98	17%



Nevada Monthly STD Report- Cumulative Monthly Trends

Figure 5: Cumulative Number of Chlamydia Cases in Nevada by Month Reported, 2009-2011

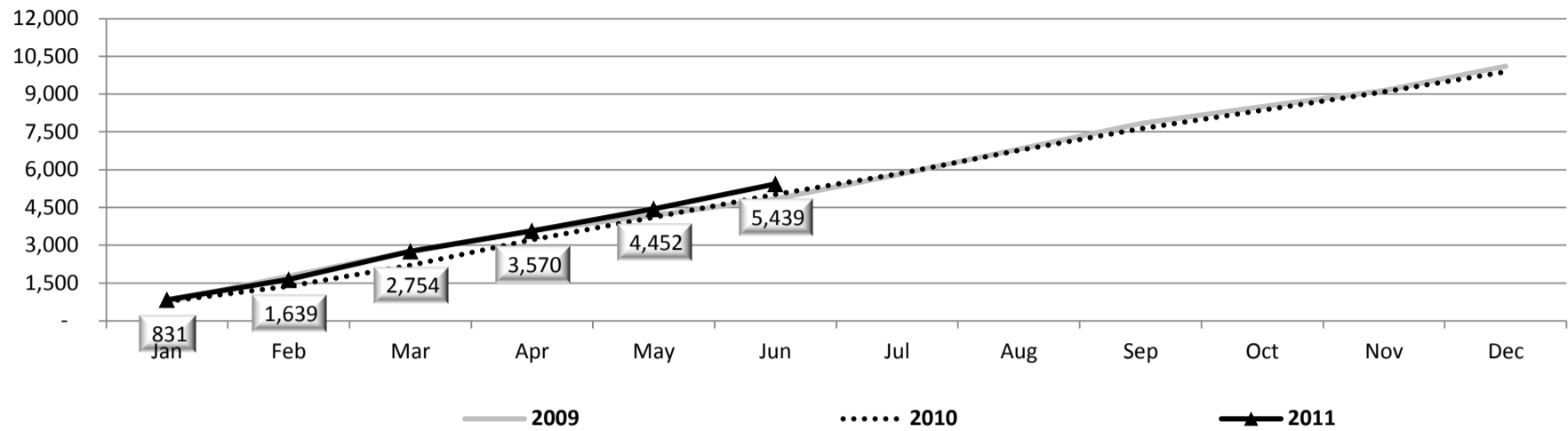


Figure 6: Cumulative Number of Gonorrhea Cases in Nevada by Month Reported, 2009-2011

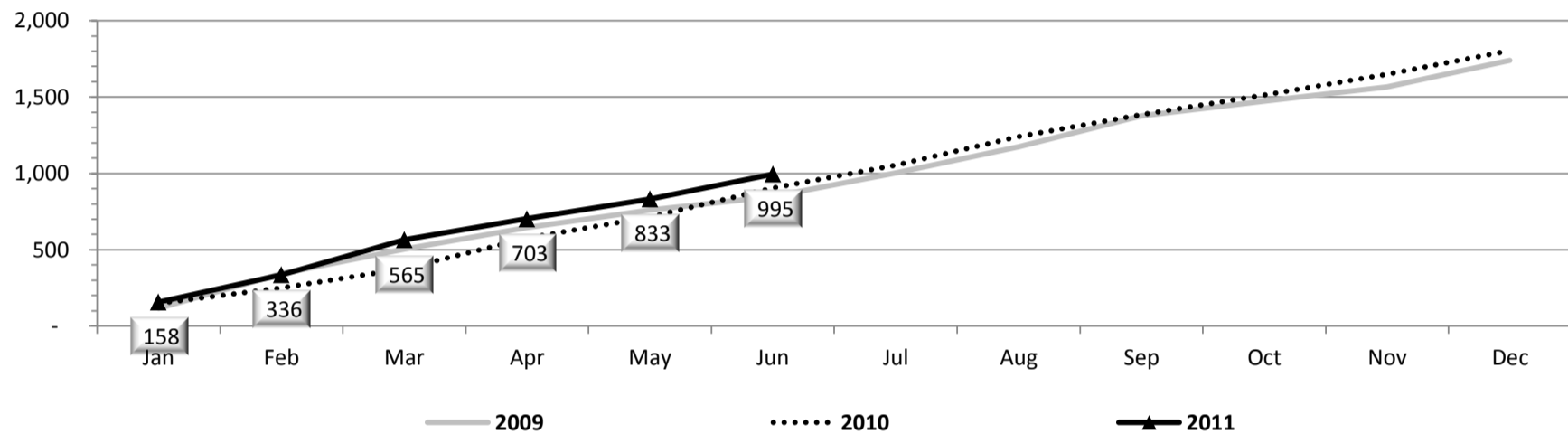


Figure 7: Cumulative Number of Primary & Secondary Syphilis Cases in Nevada by Month Reported, 2009-2011

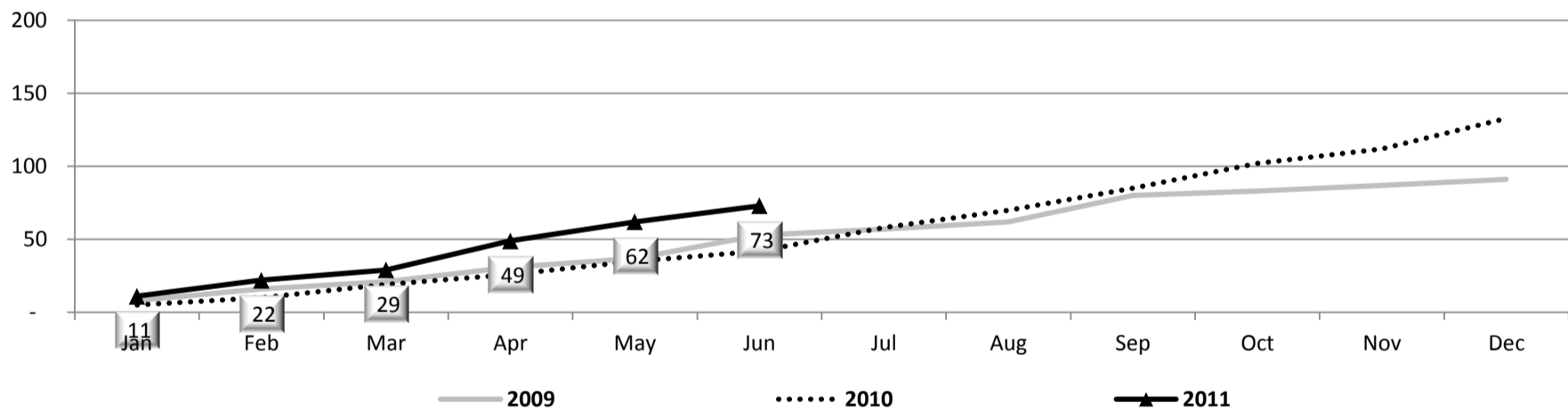
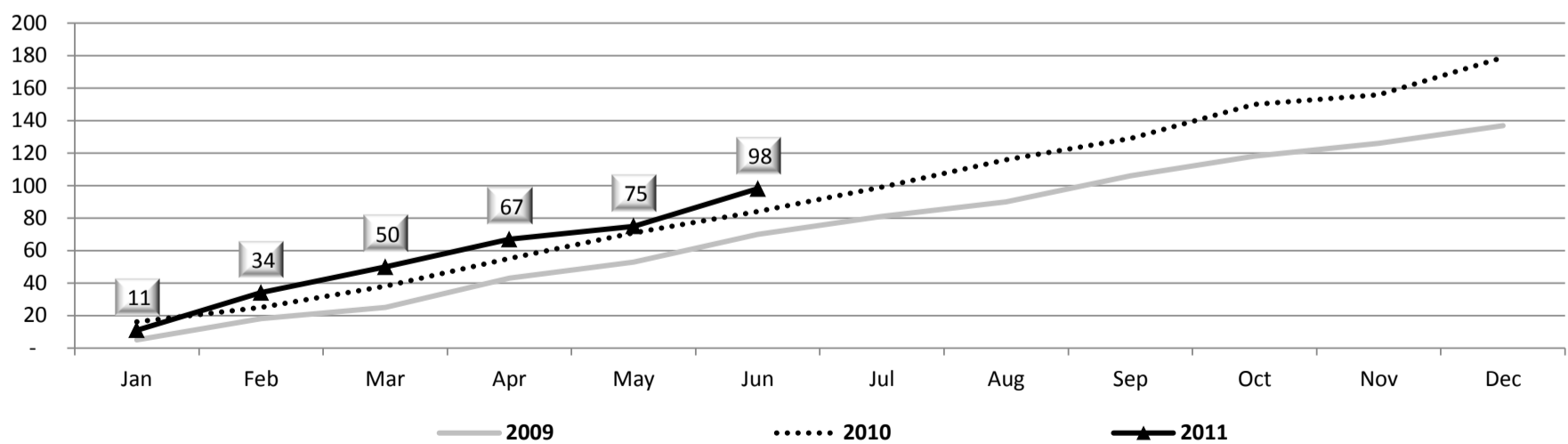


Figure 8: Cumulative Number of Early Latent Syphilis Cases in Nevada by Month Reported, 2009-2011



For more information on STD statistics in Nevada, please visit our website at:
http://health.nv.gov/CD_HIV_STDProgram.htm