



Nevada Quarterly STD Report - GC and CT: *January - March 2011*

Chlamydia (CT)

Table 1: Number of Reported Male and Female CT Cases

	2011		2010		YTD % Change
	Quarter	YTD	Quarter	YTD	
Male	928	928	570	570	63%
Female	1,826	1,826	1,627	1,627	12%
Total	2,754	2,754	2,197	2,197	25%

Figure 1: Number of Reported CT Cases by Sex and Month

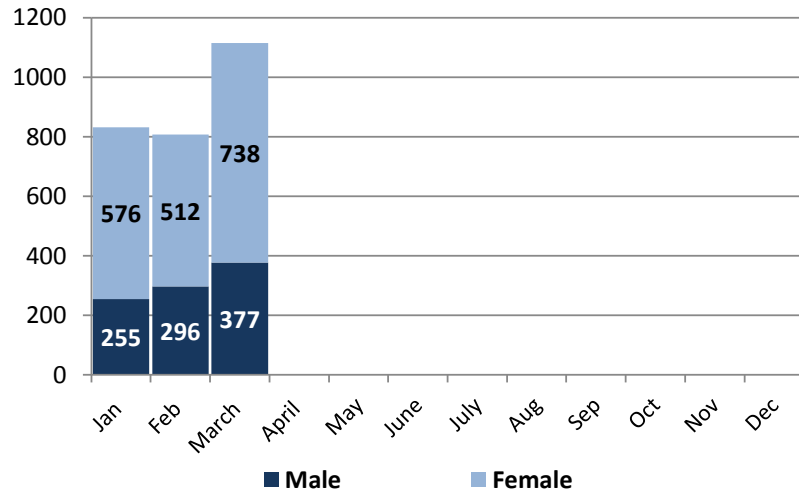


Table 2: Number of Reported CT Cases by Race/Ethnicity

	Quarter	%	YTD	YTD % Change (2010 -2011)
White, non-Hispanic	577	21%	577	23%
Black, non-Hispanic	570	21%	570	52%
Hispanic	574	21%	574	60%
AI/AN*	15	1%	15	-29%
API*	31	1%	31	11%
Other	987	36%	987	5%
Total	2,754	100%	2,754	25%

Table 3: Number of Reported CT Cases by Age

	Quarter	%	YTD	YTD % Change (2010 -2011)
<14	28	1%	28	22%
15-19	871	32%	871	18%
20-24	973	35%	973	31%
25-29	461	17%	461	24%
30-34	212	8%	212	20%
35-39	101	4%	101	36%
40-44	64	2%	64	64%
45-54	33	1%	33	43%
55-64	8	0%	8	14%
65+	2	0%	2	0%
Unknown	1	0%	1	0%
Total	2,754	100%	2,754	25%

Table 4: Number of Reported CT Cases by County

	Quarter	%	YTD	YTD % Change (2010 -2011)
Clark	2,236	81%	2,236	31%
Washoe	345	13%	345	-3%
Carson/Douglas/Lyon Counties	96	3%	96	140%
All Other**	72	3%	72	-15%
Unknown	5	0%	5	-38%
Total	2,754	100%	2,754	25%

*API= Asian/Pacific Islander and AI/AN= American Indian/Alaskan Native

**All Other Counties include the counties of Churchill, Elko, Esmeralda, Eureka, Humboldt, Lander, Lincoln, Mineral, Nye, Pershing, Storey, and White Pine.

Gonorrhea (GC)

Table 5: Number of Reported Male and Female GC Cases

	2011		2010		YTD % Change
	Quarter	YTD	Quarter	YTD	
Male	350	350	167	167	110%
Female	215	215	209	209	3%
Total	565	565	376	376	50%

Figure 2: Number of Reported GC Cases by Sex and Month

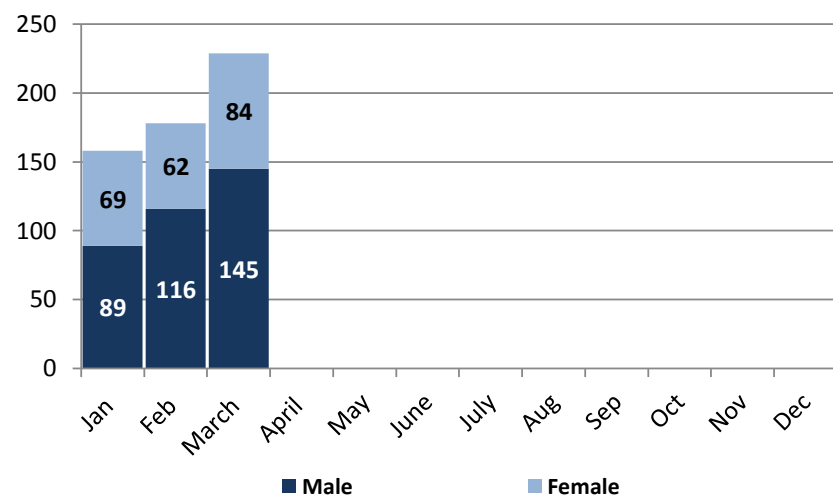


Table 6: Number of Reported GC Cases by Race/Ethnicity

	Quarter	%	YTD	YTD % Change (2010 -2011)
White, non-Hispanic	97	17%	97	83%
Black, non-Hispanic	236	42%	236	50%
Hispanic	89	16%	89	345%
AI/AN*	2	0%	2	100%
API*	4	1%	4	0%
Other	137	24%	137	-3%
Total	565	100%	565	50%

Table 7: Number of Reported GC Cases by Age

	Quarter	%	YTD	YTD % Change (2010 -2011)
<14	6	1%	6	50%
15-19	152	27%	152	18%
20-24	162	29%	162	53%
25-29	99	18%	99	106%
30-34	46	8%	46	35%
35-39	25	4%	25	19%
40-44	39	7%	39	255%
45-54	24	4%	24	71%
55-64	9	2%	9	50%
65+	2	0%	2	-33%
Unknown	1	0%	1	0%
Total	565	100%	565	50%

Table 8: Number of Reported GC Cases by County

	Quarter	%	YTD	YTD % Change (2010 -2011)
Clark	519	92%	519	47%
Washoe	37	7%	37	106%
Carson/Douglas/Lyon Counties	3	1%	3	50%
All Other**	2	0%	2	-33%
Unknown	4	1%	4	0%
Total	565	100%	565	50%



Nevada Quarterly STD Report - Syphilis: *January - March 2011*

P&S Syphilis

Table 9: Number of Reported P&S Syphilis Cases

	2011		2010		YTD % Change
	Quarter	YTD	Quarter	YTD	
Male	29	29	18	18	61%
Female	0	0	1	1	-100%
Total	29	29	19	19	53%

Figure 3: Number of Reported P&S Syphilis Cases by Sex and Month

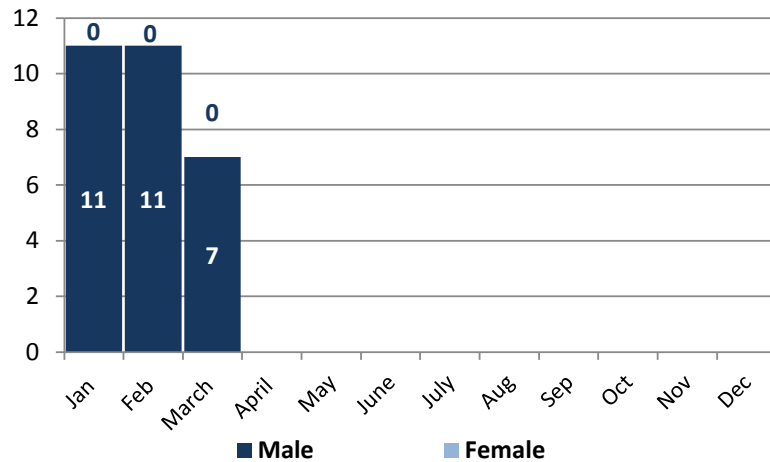


Table 10: Number of Reported P&S Syphilis Cases by Race/Ethnicity

	Quarter	%	YTD	YTD % Change (2010-2011)
White, non-Hispanic	12	41%	12	71%
Black, non-Hispanic	9	31%	9	125%
Hispanic	5	17%	5	0%
AI/AN*	0	0%	0	N/A
API*	0	0%	0	N/A
Other	3	10%	3	0%
Total	29	100%	29	53%

Table 11: Number of Reported P&S Syphilis Cases by Age

	Quarter	%	YTD	YTD % Change (2010-2011)
<14	0	0%	0	N/A
15-19	3	10%	3	N/A
20-24	4	14%	4	33%
25-29	7	24%	7	40%
30-34	4	14%	4	300%
35-39	1	3%	1	-67%
40-44	5	17%	5	400%
45-54	5	17%	5	0%
55-64	0	0%	0	-100%
65+	0	0%	0	N/A
Unknown	0	0%	0	N/A
Total	29	100%	29	53%

Table 12: Number of Reported P&S Syphilis Cases by County

	Quarter	%	YTD	YTD % Change (2010-2011)
Clark	28	97%	28	47%
Washoe	1	3%	1	0%
Carson/Douglas/Lyon Counties	0	0%	0	0%
All Other**	0	0%	0	0%
Unknown	0	0%	0	0%
Total	29	100%	29	53%

*API= Asian/Pacific Islander and AI/AN= American Indian/Alaskan Native

**All Other Counties include the counties of Churchill, Elko, Esmeralda, Eureka, Humboldt, Lander, Lincoln, Mineral, Nye, Pershing, Storey, and White Pine.

Early Latent Syphilis

Table 13: Number of Reported Early Latent Cases

	2011		2010		YTD % Change
	Quarter	YTD	Quarter	YTD	
Male	43	43	35	35	23%
Female	7	7	3	3	133%
Total	50	50	38	38	32%

Figure 4: Number of Reported Early Latent Syphilis Cases by Sex and Month

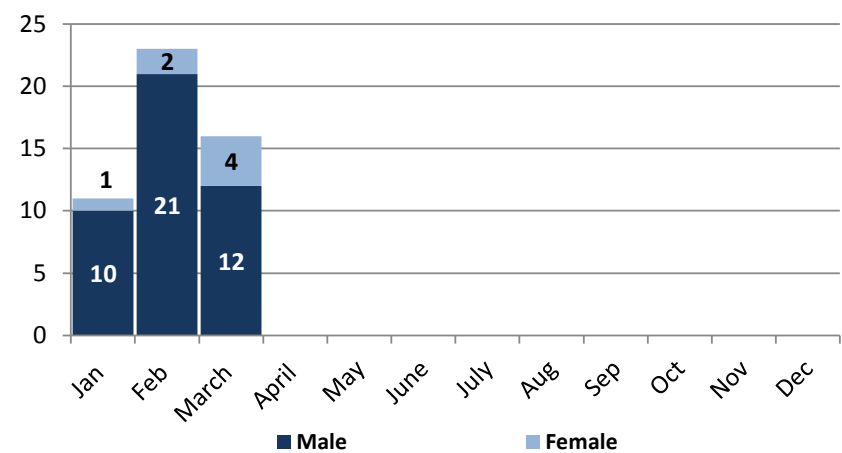


Table 14: Number of Reported Early Latent Syphilis Cases by Race/Ethnicity

	Quarter	%	YTD	YTD % Change (2010-2011)
White, non-Hispanic	16	32%	16	129%
Black, non-Hispanic	12	24%	12	-25%
Hispanic	18	36%	18	38%
AI/AN*	0	0%	0	N/A
API*	0	0%	0	0%
Other	4	8%	4	100%
Total	50	100%	50	32%

Table 15: Number of Reported Early Latent Cases by Age

	Quarter	%	YTD	YTD % Change (2010-2011)
<14	0	0%	0	N/A
15-19	2	4%	2	0%
20-24	6	12%	6	-33%
25-29	5	10%	5	0%
30-34	10	20%	10	11%
35-39	5	10%	5	25%
40-44	7	14%	7	75%
45-54	9	18%	9	125%
55-64	5	10%	5	400%
65+	1	2%	1	N/A
Unknown	0	0%	0	N/A
Total	50	100%	50	32%

Table 16: Number of Reported Early Latent Cases by County

	Quarter	%	YTD	YTD % Change (2010-2011)
Clark	49	98%	49	29%
Washoe	1	2%	1	0%
Carson/Douglas/Lyon Counties	0	0%	0	0%
All Other**	0	0%	0	0%
Unknown	0	0%	0	0%
Total	50	100%	50	32%



Nevada Monthly STD Report- Cumulative Monthly Trends

Figure 5: Cumulative Number of Chlamydia Cases in Nevada by Month Reported, 2009-2011

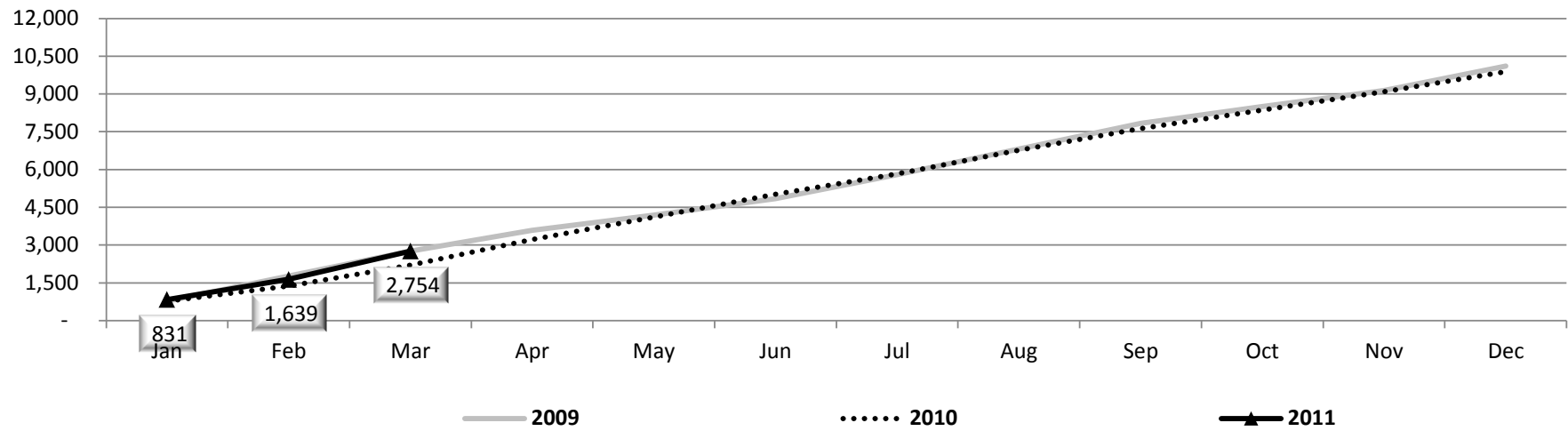


Figure 6: Cumulative Number of Gonorrhea Cases in Nevada by Month Reported, 2009-2011

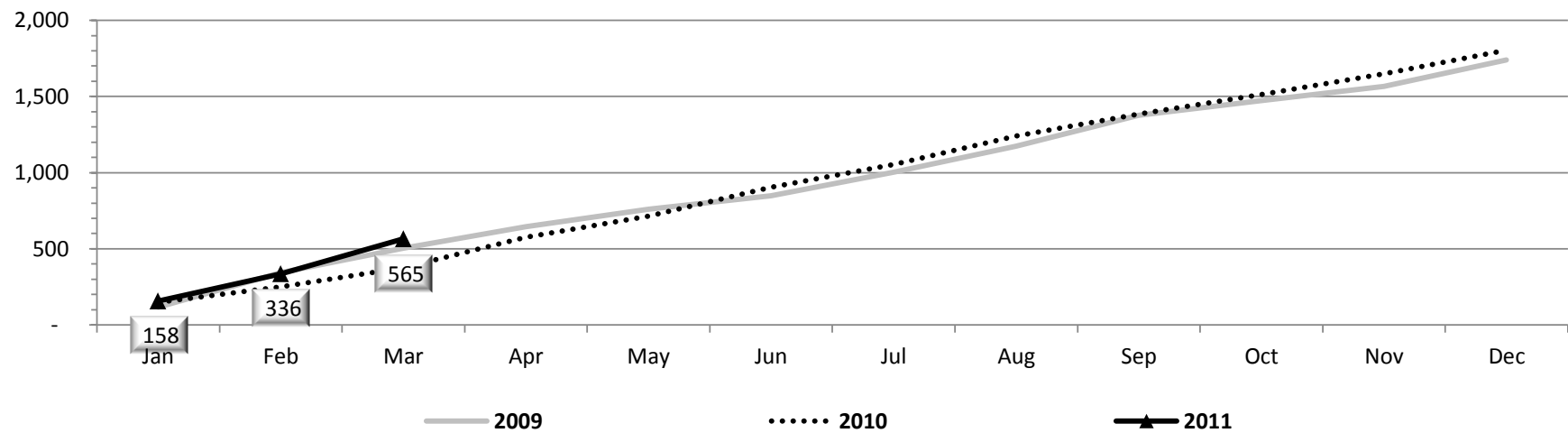


Figure 7: Cumulative Number of Primary & Secondary Syphilis Cases in Nevada by Month Reported, 2009-2011

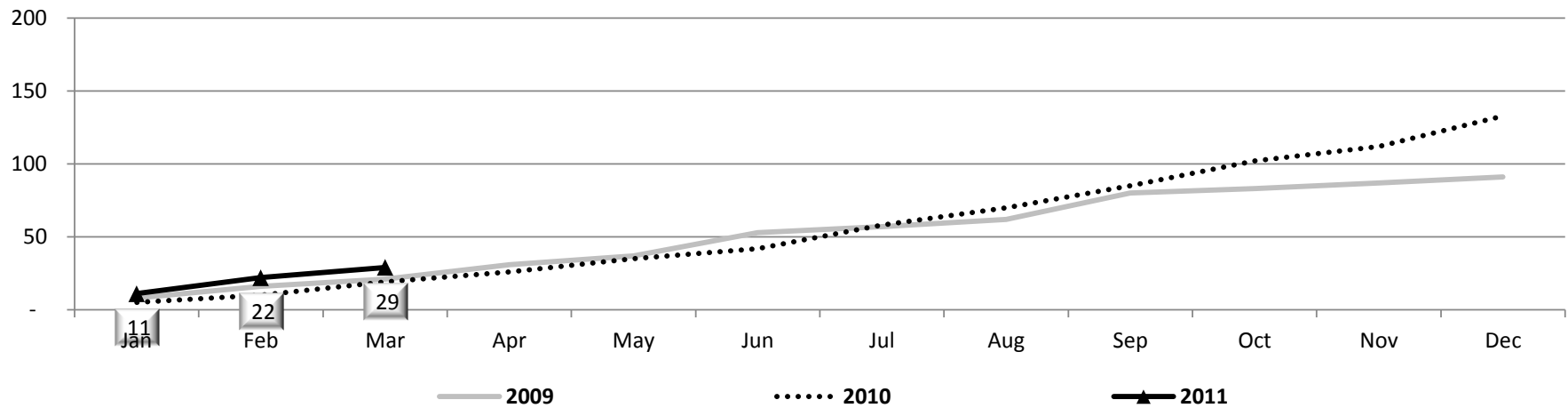
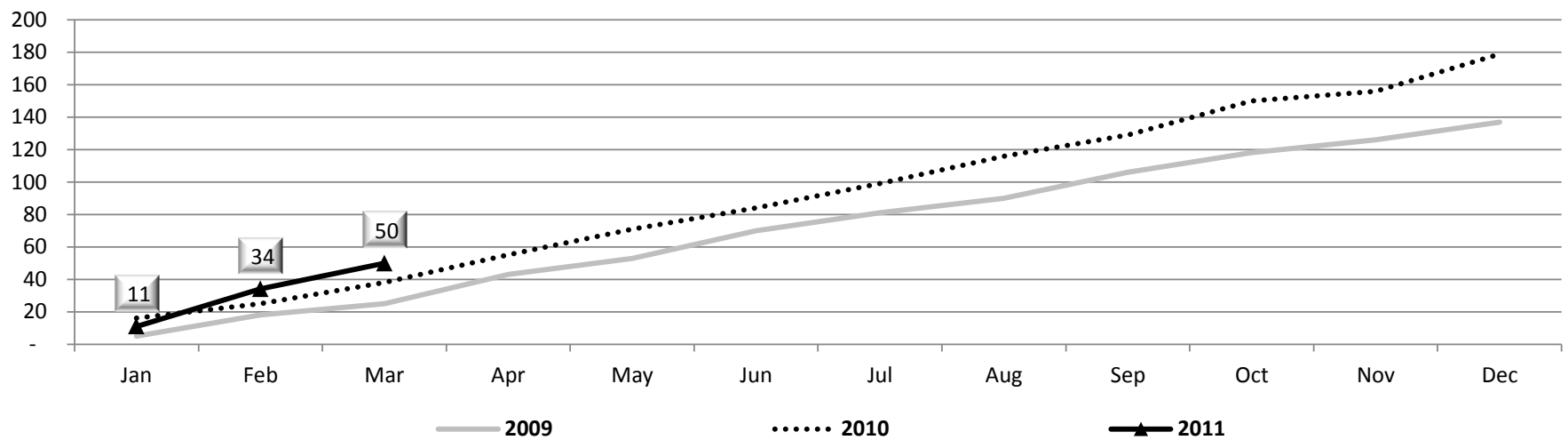


Figure 8: Cumulative Number of Early Latent Syphilis Cases in Nevada by Month Reported, 2009-2011



For more information on STD statistics in Nevada, please visit our website at:
http://health.nv.gov/CD_HIV_STDProgram.htm