

Washoe County



Population (2008) 423,833

Land Area (square miles) 6,342

Persons per square mile 66.8

Race/Ethnicity

- White 69.5%
- Black 2.2%
- American Indian & Alaskan Native 1.9%
- Asian 5.9%
- Hispanic or Latino origin 20.5%

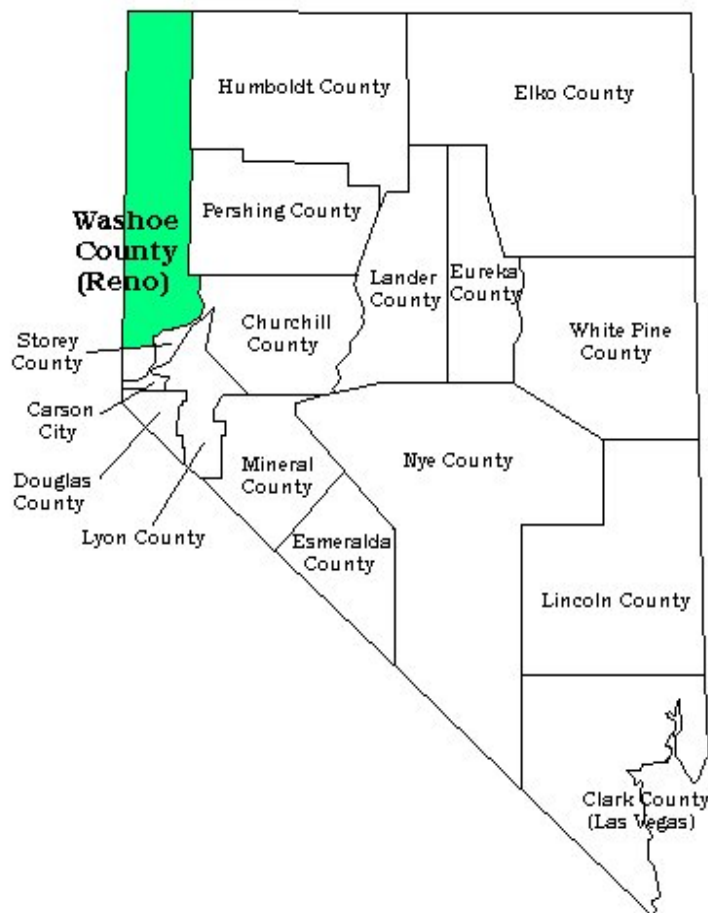
Median Household Income \$54,524

Persons Below Poverty 10.2%

Population and race/ethnicity data are from the Nevada State Demographer; Income and poverty data are from the U.S. Census Bureau

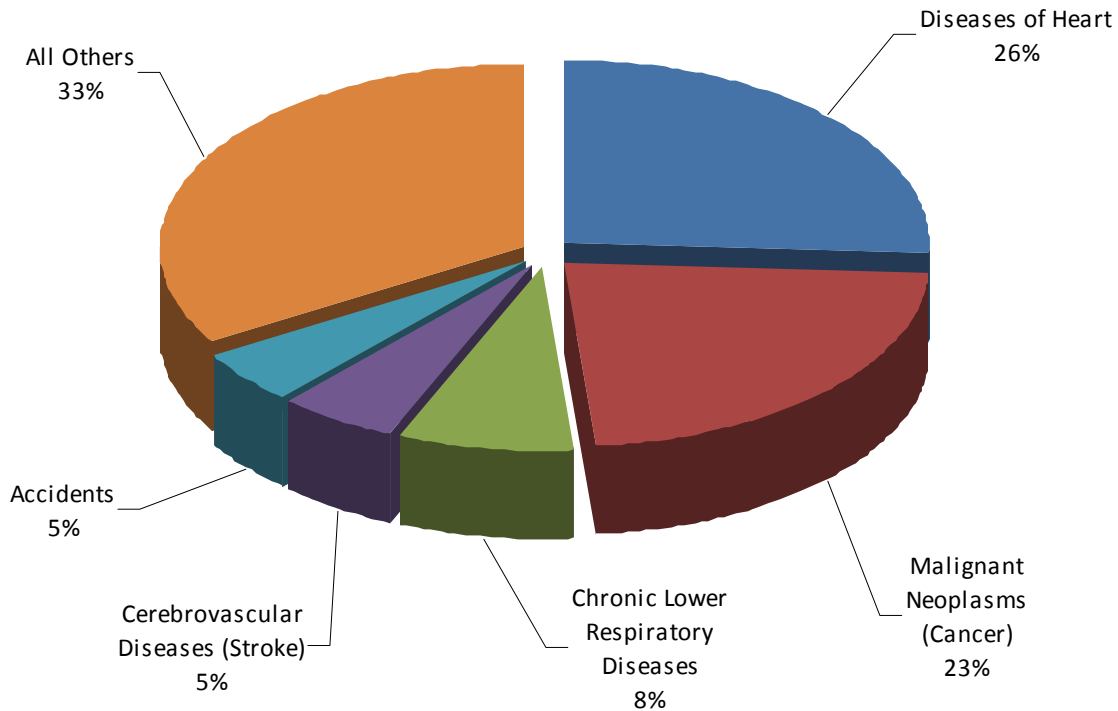
Healthy People Highlights:

- Washoe County saw a notable increase in its lung cancer mortality rate in 2008, after a three year decline during the years 2005—2007.
- The colorectal cancer mortality rate declined for Nevada and Washoe County from 2000-2009.
- The rate of persons with clinically diagnosed diabetes rose for Washoe County and Nevada from 2000-2006. Since 2007, the Washoe County rate steadied and the higher state rate declined.
- The high school completion rate for Washoe County rose from 2004-2009 to meet the Healthy People 2010 target in the year 2009.
- The rate of adolescent pregnancy among females, aged 15 to 17 years, declined for Washoe County from 2000-2008.
- The Washoe County rate for meningococcal disease was approximately triple the state rate from 2004-2008.
- The mortality rate for falls increased for Washoe County from 2003-2008 to triple the Healthy People 2010 target.



Leading Causes of Death

Washoe



2000 - 2008 Pooled Data

The list of Washoe County's top five leading causes of death is led by heart disease (26%), closely followed by malignant neoplasms—cancer (23%). Chronic lower respiratory diseases (8%), cerebrovascular diseases—stroke (5%), and accidents (5%) round out the list. All other causes of death account for the remaining 33% of the county's mortality.

Similarly, the leading cause of death for Nevada is heart disease (26%), followed by malignant neoplasms—cancer (23%), chronic lower respiratory diseases (6%), accidents (5%), and cerebrovascular diseases (5%).

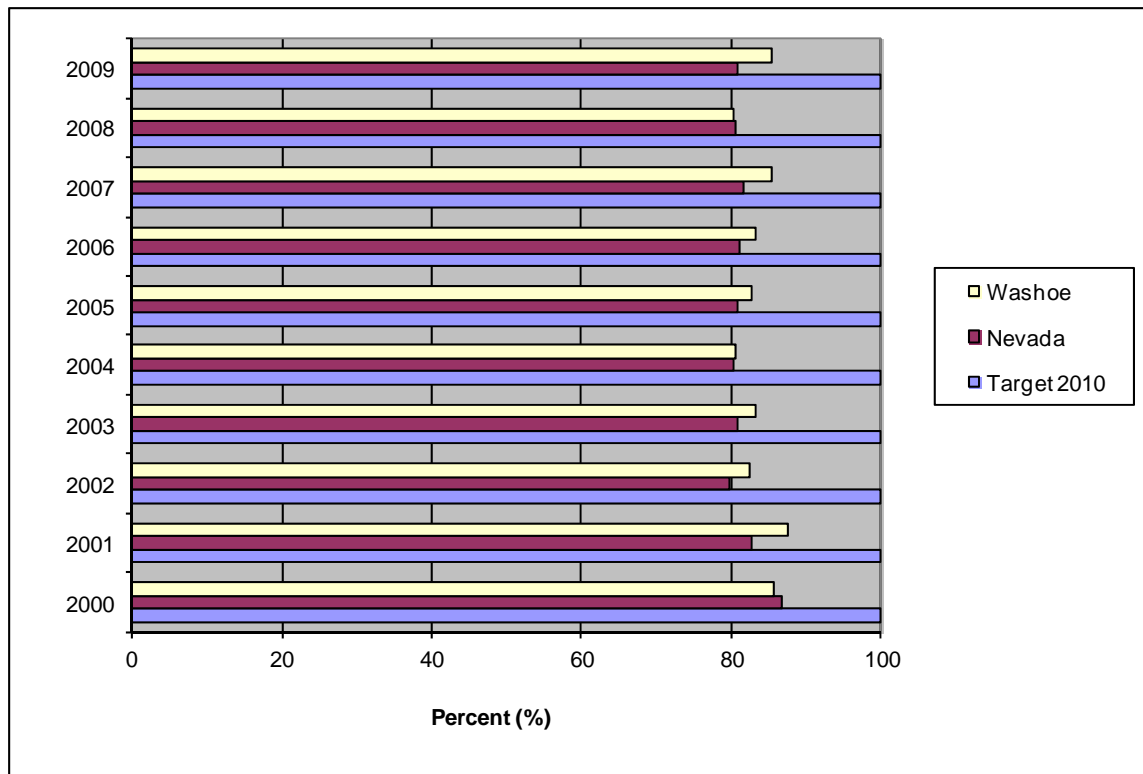
*The data are from Nevada Vital Statistics Records.
Note: 2007 and 2008 data are not final and are subject to change.

Access to Quality Health Services

Healthy People 2010 Objective (1-1): Increase the proportion of persons with health insurance.

Healthy People 2020 Objective AHS HP2020-1: Increase the proportion of persons with health insurance.

Proportion of Persons with Health Insurance, Washoe County and Nevada, BRFSS Data, 2000 - 2009.*



The percentage of persons with health insurance remained fairly steady in Nevada around 80% after a slight decline during the years 2000—2001. Washoe County has seen a stronger fluctuation in its rate. The county rate averaged over 82% during the years 2002—2009. The Healthy People 2010 target of 100 percent was not attained.

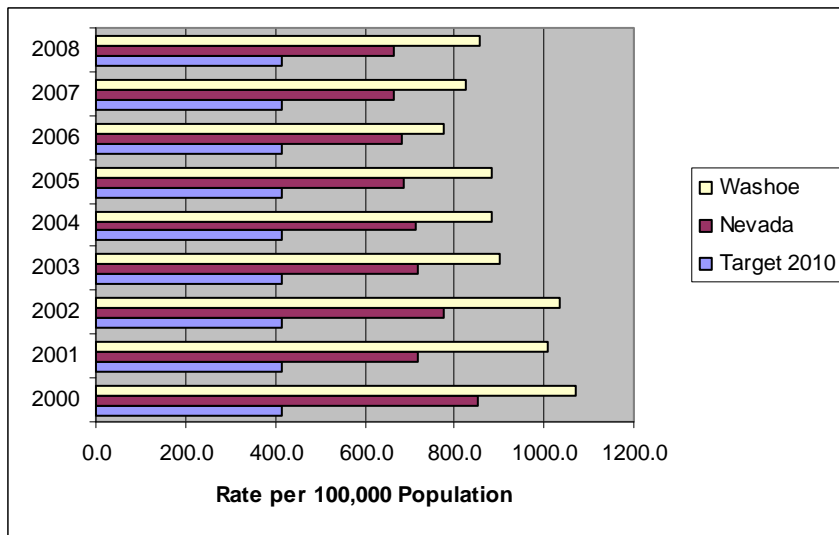
*These percentages are weighted to survey population characteristics. Not all counties were included in the survey results.

Arthritis, Osteoporosis, and Chronic Back Conditions

Healthy People 2010 Objective (15-28): Reduce hip fractures among females and males aged 65 and older.

Healthy People 2020 Objective AOCBC HP2020-11: Reduce hip fractures among older adults.

Hospitalization Rate for Hip Fractures Among Females Aged 65 Years and Older, Washoe County and Nevada, 2000 - 2008.*



The hospitalization rate for hip fractures among females, aged 65 years and over, declined for the state and Washoe County from 2000-2006.

The county rate was higher than the Nevada rate for all study years.

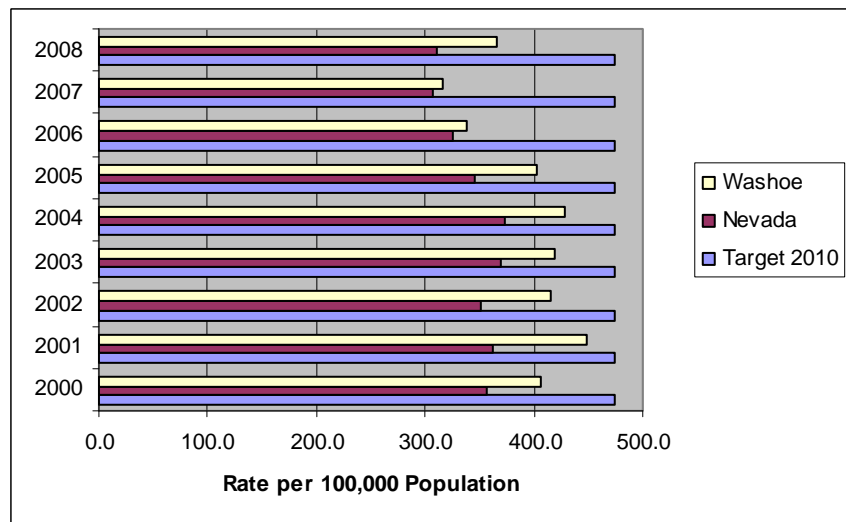
The target rate of 416 per 100,000 population as set by Healthy People 2010 was not met.

For the study years 2000-2008, the hospitalization rate for hip fractures among males, aged 65 years and older, fluctuated for both the state and the county.

The Washoe County rate consistently averaged higher than the Nevada rate.

The Healthy People 2010 goal rate of 474 per 100,000 was not attained.

Hospitalization Rate for Hip Fractures Among Males Aged 65 Years and Older, Washoe County and Nevada, 2000 - 2008.*



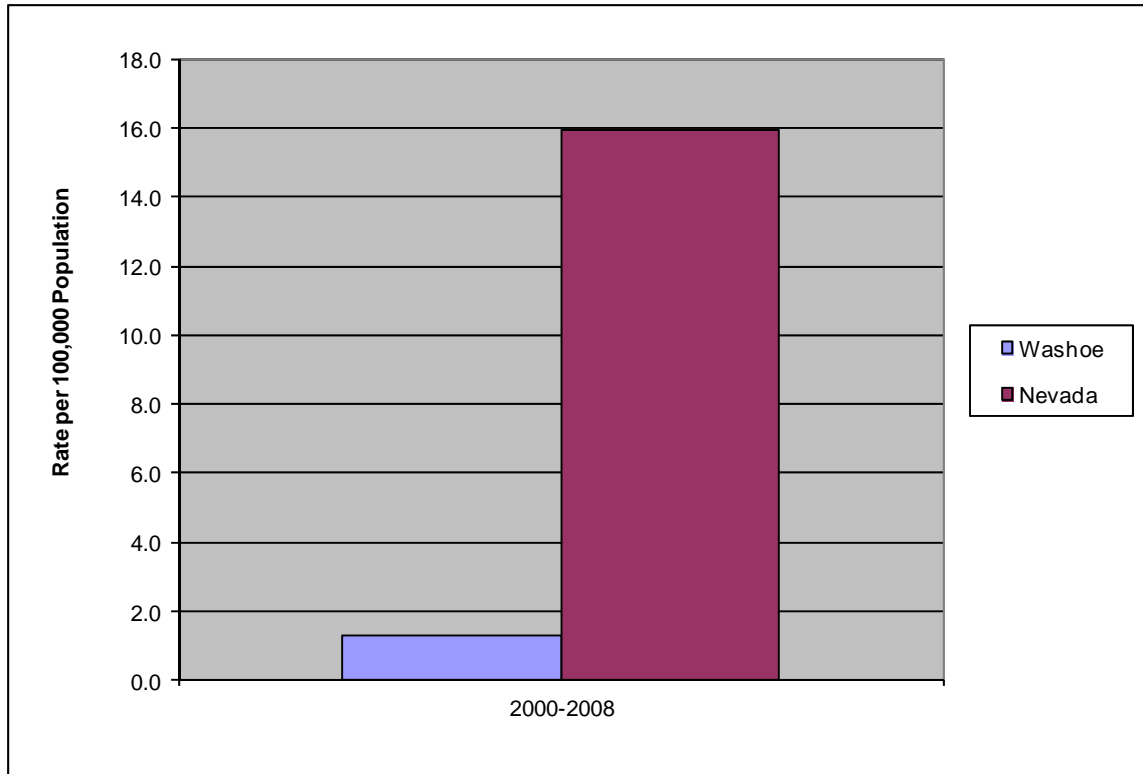
*The Nevada data are from Nevada Inpatient Hospital Discharge (NIHDD).

Blood Disorders and Blood Safety

Healthy People 2020 Objective BDBS HP2020-2: Reduce hospitalization for sickle cell disease among children aged 9 years and younger.

NOTE: This objective was removed from the final HP 2020 release.

Aggregated Hospitalization Rate for Sickle Cell Disease Among Children Aged 9 Years and Younger, Washoe County and Nevada, 2000 - 2008.*



Washoe County's rate for sickle cell disease among children, aged 9 years and younger, was on aggregate, approximately one-sixteenth of the Nevada rate for the years 2000 to 2008.

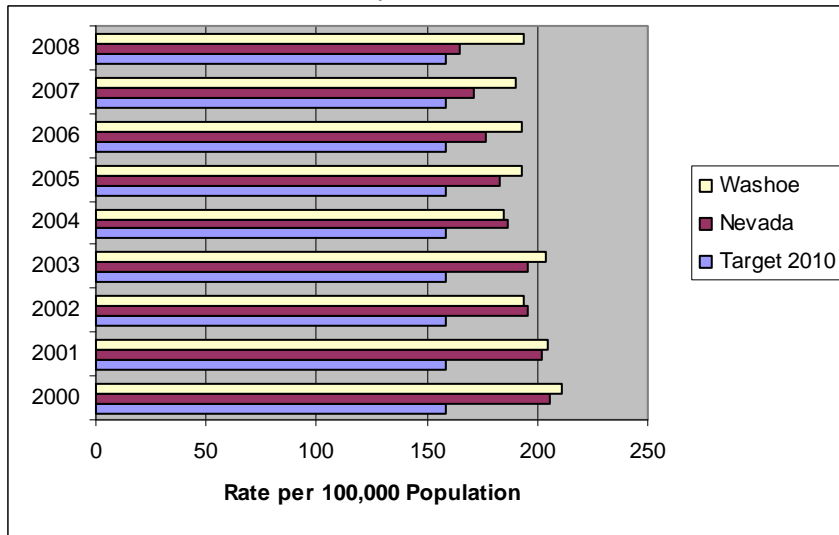
*The Nevada data are from Nevada Inpatient Hospital Discharge (NIHDD).

Cancer

Healthy People 2010 Objective (3-1): Reduce the overall cancer death rate.

Healthy People 2020 Objective C HP2020-1: Reduce the overall cancer death rate.

Age-Adjusted Overall Cancer Death Rate, Washoe County and Nevada, 2000 - 2008.*



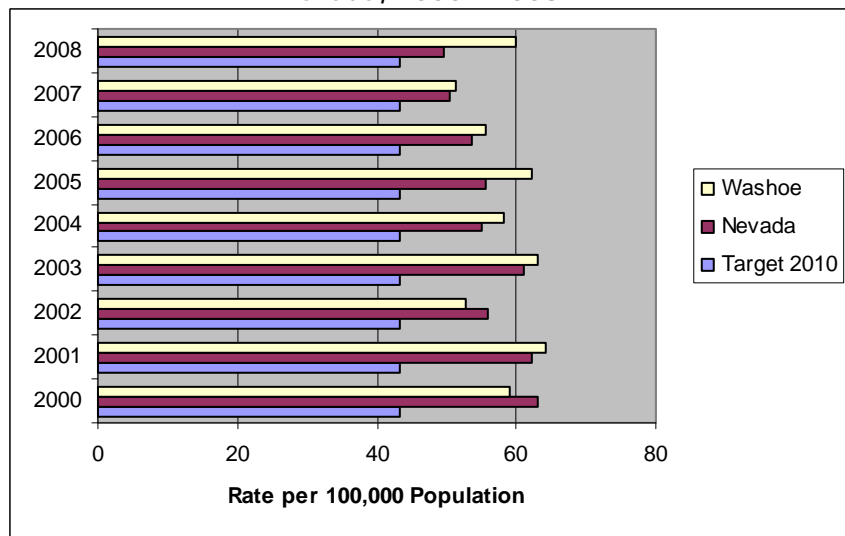
This decade, the overall cancer mortality rate for Nevada declined, while the Washoe County rate fluctuated.

The objective rate of 158.6 per 100,000 population as set by Healthy People 2010 was not met.

Healthy People 2010 Objective (3-2): Reduce the lung cancer death rate.

Healthy People 2020 Objective C HP2020-2: Reduce the lung cancer death rate.

Age-Adjusted Lung Cancer Death Rate, Washoe County and Nevada, 2000 - 2008.*



The lung cancer mortality rate for Washoe County and Nevada fluctuated over the years 2000—2008.

Washoe County saw a notable increase in lung cancer deaths in 2008, after a three year decline.

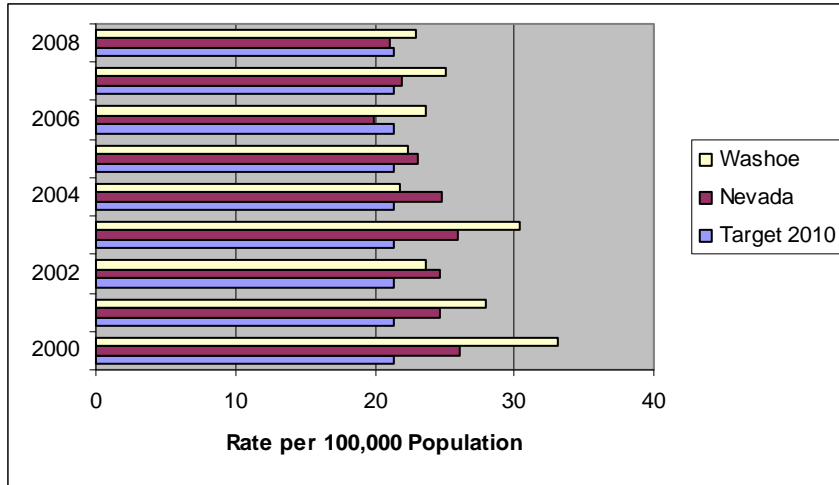
The Healthy People 2010 target rate of 43.3 per 100,000 population was not reached.

*These rates are age-adjusted to the 2000 U.S. standard population. The Nevada data are from Nevada Vital Statistics Records. Note: 2007 and 2008 data are not final and are subject to change.

Healthy People 2010 Objective (3-3): Reduce the breast cancer death rate.

Healthy People 2020 Objective C HP2020-3: Reduce the female breast cancer death rate.

Age-Adjusted Female Breast Cancer Death Rate, Washoe County and Nevada, 2000 - 2008.*



During the study years 2000-2008, the female breast cancer mortality rate fluctuated for the state and Washoe County. However, both were lower in 2008 than in 2000.

Nevada met the Healthy People 2010 goal rate of 21.3 deaths per 100,000 population in the years 2006 and 2008, but the county did not reach the target.

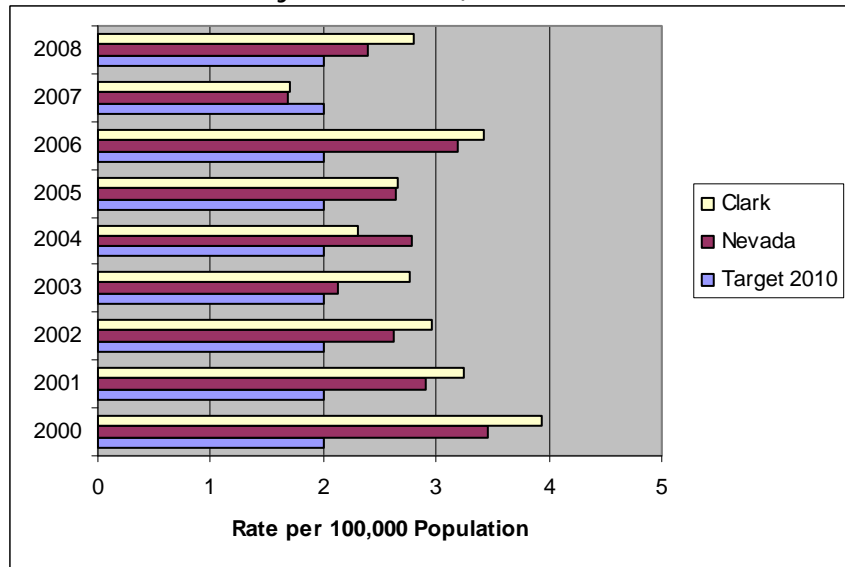
Healthy People 2010 Objective (3-4): Reduce deaths from cancer of the uterine cervix.

Healthy People 2020 Objective C HP2020-4: Reduce deaths from cancer of the uterine cervix.

Age-Adjusted Uterine Cervix Cancer Death Rate, Washoe County and Nevada, 2000 - 2008.*

The uterine cervix cancer mortality rate fluctuated for Washoe County and Nevada. The county rate was higher than the state rate during the years 2000—2008.

Both the county and the state met the Healthy People 2010 target rate of 2.0 deaths per 100,000 population in the year 2007.

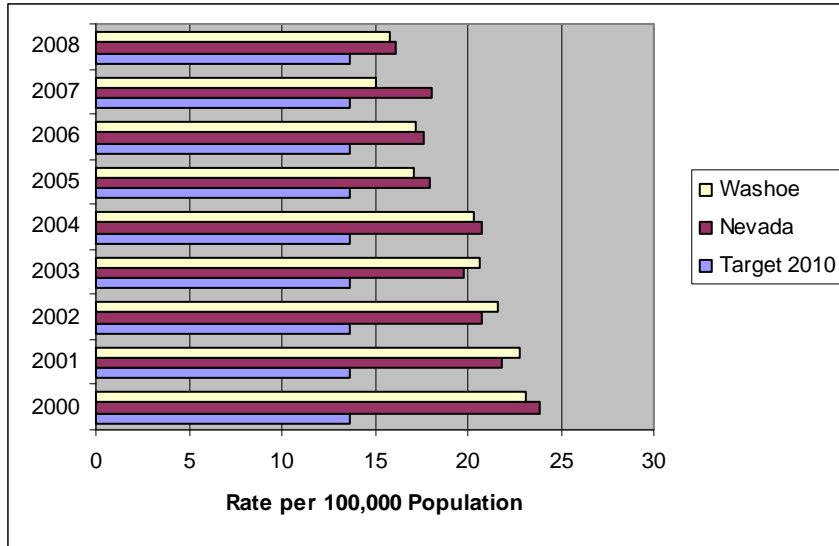


*These rates are age-adjusted to the 2000 U.S. standard population. The Nevada data are from Nevada Vital Statistics Records. Note: 2007 and 2008 data are not final and are subject to change.

Healthy People 2010 Objective (3-5): Reduce the colorectal cancer death rate.

Healthy People 2020 Objective C HP2020-5: Reduce the colorectal cancer death rate.

Age-Adjusted Colorectal Cancer Death Rate, Washoe County and Nevada, 2000 - 2008.*



The colorectal cancer mortality rate declined for Nevada and Washoe County from 2000-2008.

The Healthy People 2010 objective rate of 13.7 deaths per 100,000 population was not met.

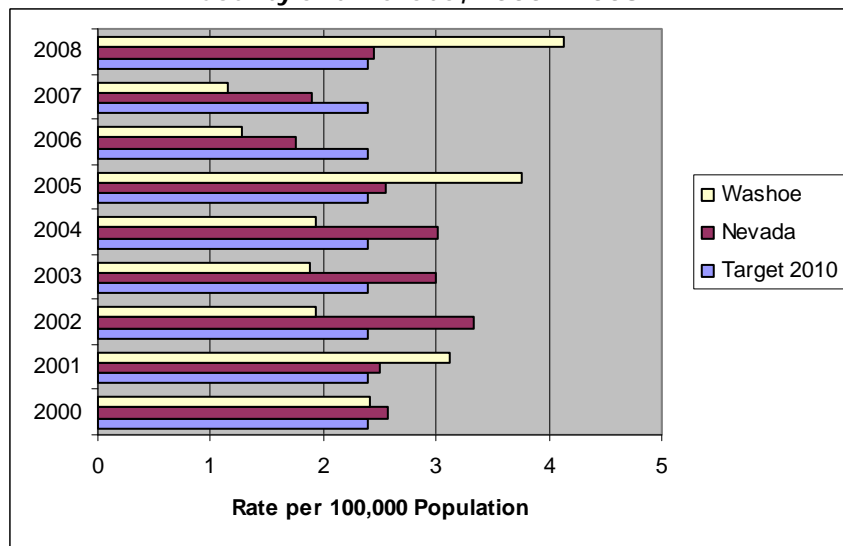
Healthy People 2010 Objective (3-6): Reduce the oropharyngeal cancer death rate.

Healthy People 2020 Objective C HP2020-6: Reduce the oropharyngeal cancer death rate.

Age-Adjusted Oropharyngeal Cancer Death Rate, Washoe County and Nevada, 2000 - 2008.*

The oropharyngeal cancer mortality rate fluctuated between 2000-2008 for Washoe County and Nevada.

Washoe County met the Healthy People 2010 goal rate of 2.4 per 100,000 population in the years 2002—2004, and 2006—2007. Nevada attained the target in 2006 and 2007.

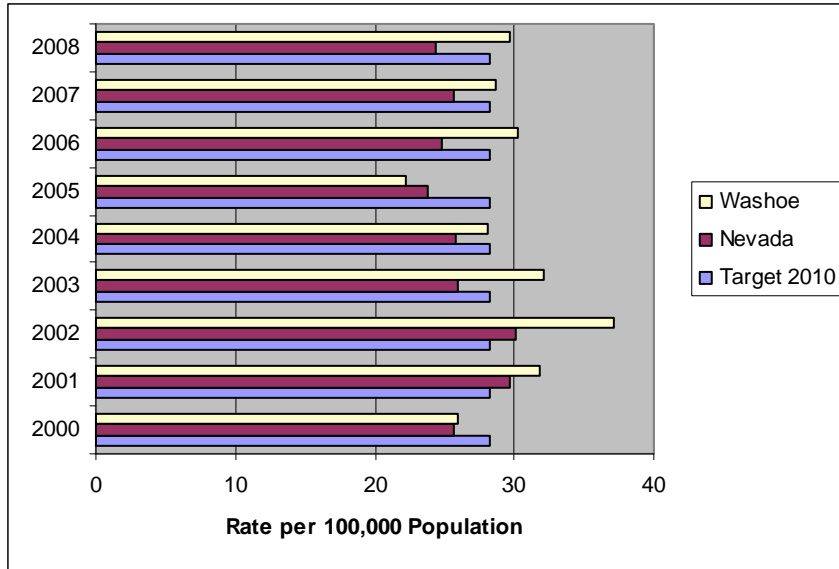


*These rates are age-adjusted to the 2000 U.S. standard population. The Nevada data are from Nevada Vital Statistics Records. Note: 2007 and 2008 data are not final and are subject to change.

Healthy People 2010 Objective (3-7): Reduce the prostate cancer death rate.

Healthy People 2020 Objective C HP2020-7: Reduce the prostate cancer death rate.

Age-Adjusted Prostate Cancer Death Rate, Washoe County and Nevada, 2000 - 2008.*



The prostate cancer mortality rate fluctuated for Nevada and Washoe County.

Over the study years 2000-2008 the county rate averaged higher than the state rate.

The Healthy People 2010 target rate of 28.2 per 100,000 population was met by Washoe County in 2000, 2004, and 2005. Nevada met the objective in the years 2000, and 2003—2008.

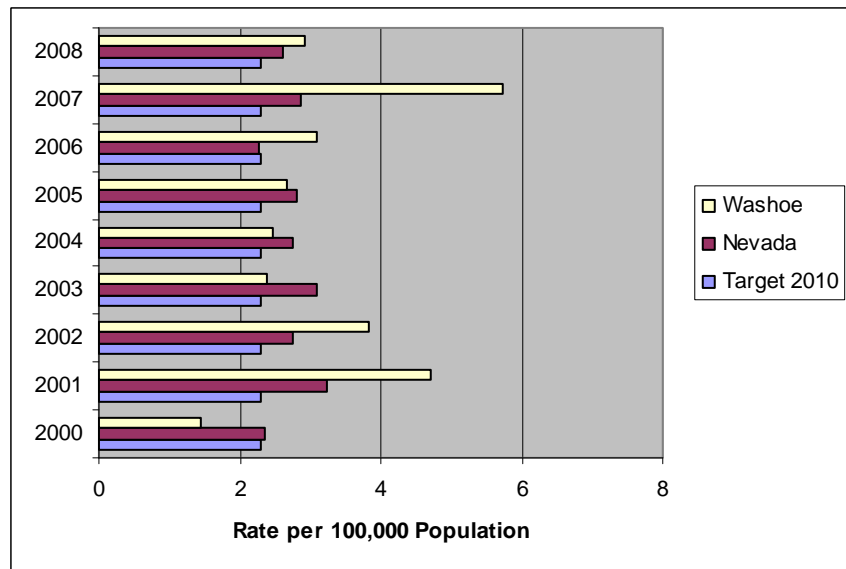
Healthy People 2010 Objective (3-8): Reduce the rate of melanoma cancer.

Healthy People 2020 Objective C HP2020-8: Reduce melanoma cancer death rate.

Age-Adjusted Melanoma Cancer Death Rate, Washoe County and Nevada, 2000 - 2008.*

Between the years 2000 -2008, the melanoma cancer mortality rate fluctuated for Washoe County and Nevada.

Washoe County attained the Healthy People 2010 goal rate of 2.3 deaths per 100,000 population in the year 2000. Nevada met the target in the year 2006.

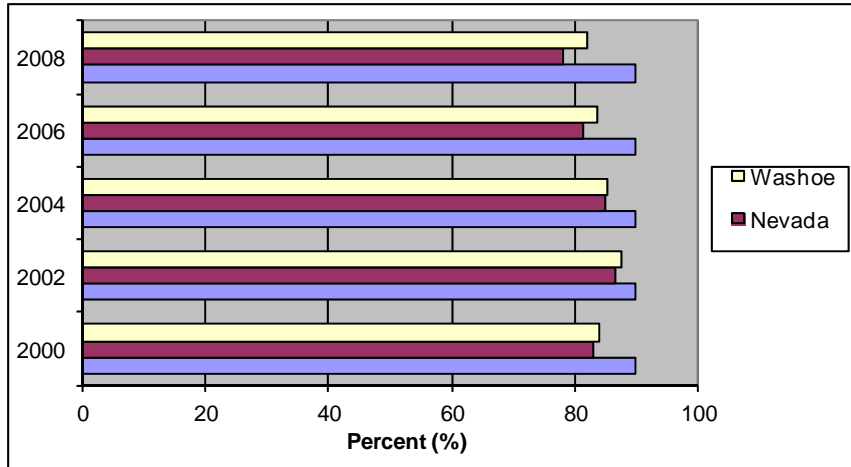


*These rates are age-adjusted to the 2000 U.S. standard population. The Nevada data are from Nevada Vital Statistics Records. Note: 2007 and 2008 data are not final and are subject to change.

Healthy People 2010 Objective (3-11b.): Increase the proportion of women aged 18 years and older who have had a Pap test in the preceding three years.

Healthy People 2020 Objective C HP2020-15: Increase the proportion of women who receive a cervical cancer screening based on the most recent guidelines.

Proportion of Women Aged 18 and Older Receiving a Pap Test within Three Years, Washoe County and Nevada, BRFSS Data, 2000, 2002, 2004, 2006, 2008.*



The percentage of women, aged 18 and older, receiving a pap test within three years declined for Washoe County and Nevada after the year 2002.

The Healthy People 2010 target of 90 percent was not met.

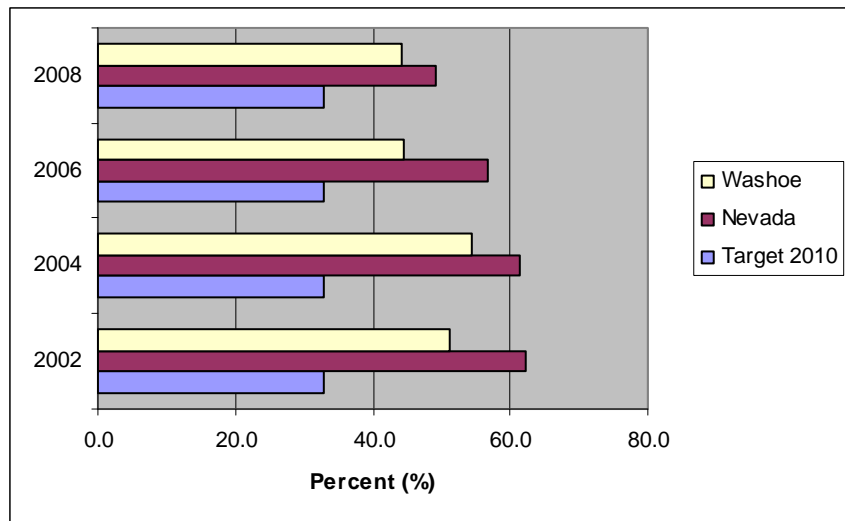
Healthy People 2010 Objective (3-12a.): Increase the proportion of adults aged 50+ who have had a fecal occult blood test in the preceding two years.

Healthy People 2020 Objective C HP2020-16: Increase the proportion of adults who receive a colorectal cancer screening based on the most recent guidelines.

Proportion of Adults Aged 50+ Who Have Had A Fecal Occult Blood Test Within the Preceding 2 Years, Washoe County and Nevada, BRFSS Data, 2002, 2004, 2006, 2008.*

The percentage of adults, aged 50 years and older, who had a fecal occult blood test within the preceding two years for Nevada and Washoe County decreased over the study years 2002-2008.

The goal of 33 percent set by Healthy People 2010 was not met.

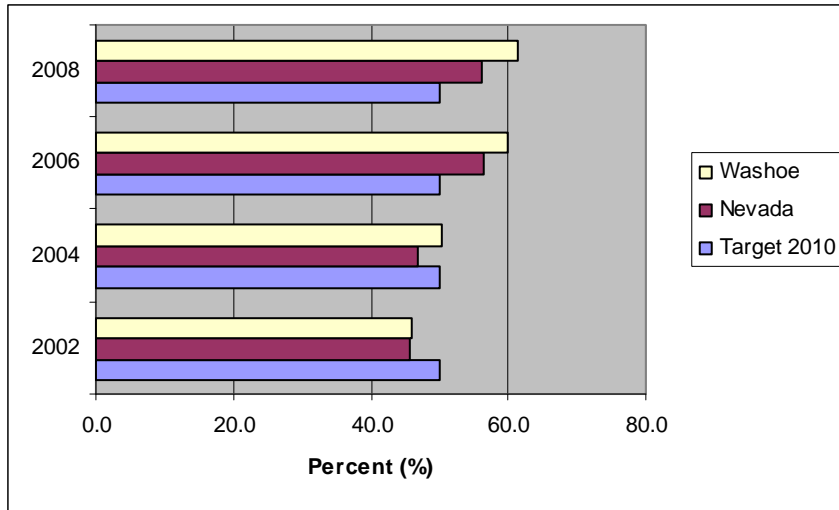


*These percentages are weighted to survey population characteristics. Not all counties were included in the survey results.

Healthy People 2010 Objective (3-12b.): Increase the proportion of adults aged 50+ who have ever had a sigmoidoscopy or colonoscopy.

Healthy People 2020 Objective C HP2020-16: Increase the proportion of adults who receive a colorectal cancer screening based on the most recent guidelines.

Proportion of Adults Aged 50+ Who Have Ever Had a Sigmoidoscopy or Colonoscopy, Washoe County and Nevada, BRFSS Data, 2002, 2004, 2006, 2008.*



The percentage of adults, aged 50 years and older, who have ever had a sigmoidoscopy or colonoscopy increased for Washoe County and the state.

The Healthy People 2010 target of 50 percent was met by Nevada and the county for the years 2006 and 2008.

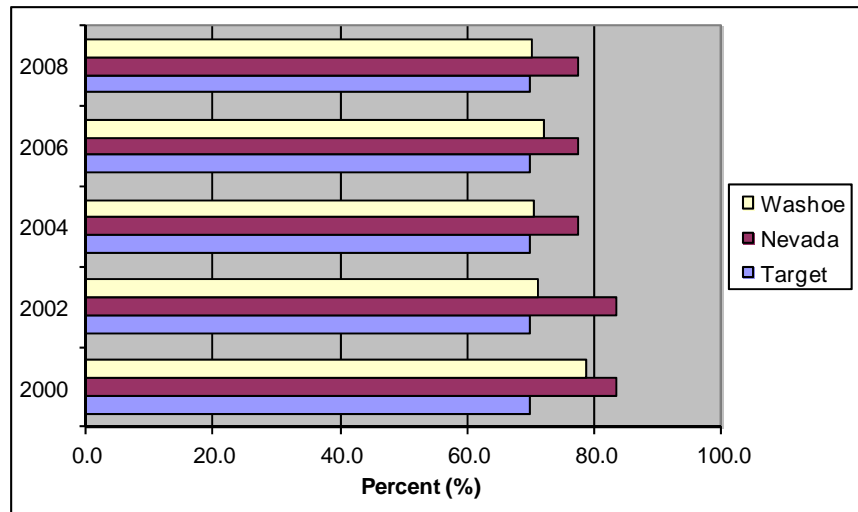
Healthy People 2010 Objective (3-13): Increase the proportion of women aged 40+ who have had a mammogram in the preceding two years.

Healthy People 2020 Objective C HP2020-17: Increase the proportion of women who receive a breast cancer screening based on the most recent guidelines.

Proportion of Women Aged 40+ Who Have Had A Mammogram in The Preceding 2 Years, Washoe County and Nevada, BRFSS Data, 2000, 2002, 2004, 2006, 2008.*

The rate of women, aged 40 and older, who have had a mammogram in the preceding two years decreased for Washoe County and the state.

However, the objective of 70 percent set by Healthy People 2010 was met in each of the study years.



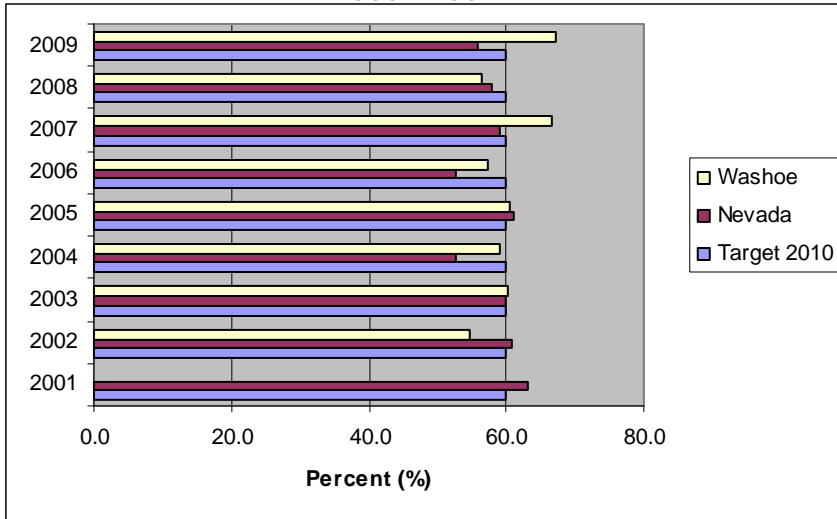
*These percentages are weighted to survey population characteristics. Not all counties were included in the survey results.

Diabetes

Healthy People 2010 Objective (5-1): Increase the proportion of persons with diabetes who receive formal diabetes education.

Healthy People 2020 Objective D HP2020-14: Increase the proportion of persons with diabetes who receive formal diabetes education.

Proportion of Persons With Diabetes Receiving Formal Diabetes Education, Washoe County and Nevada, BRFSS Data, 2000 - 2009.*



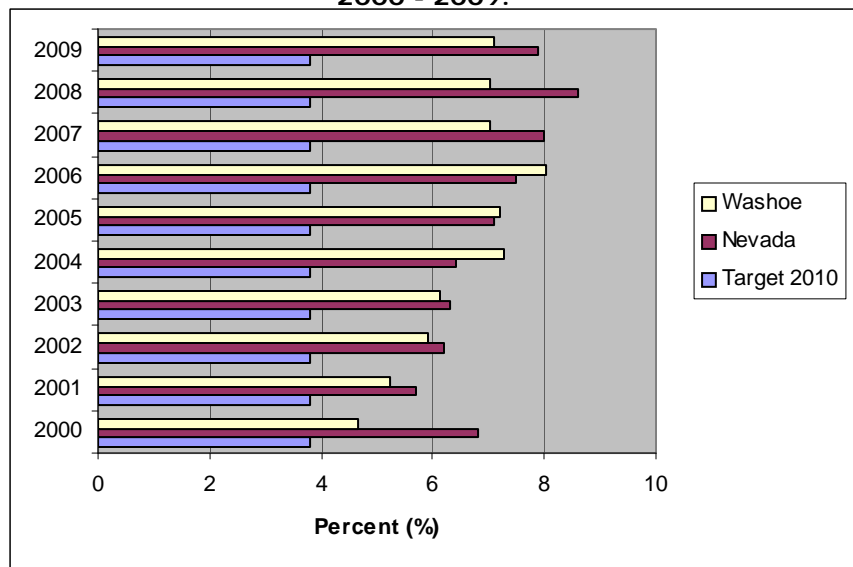
According to the Behavioral Risk Factor Surveillance System, the proportion of persons with diabetes receiving formal diabetes education fluctuated from 2001-2009 for both the state and for Washoe County.

The Healthy People 2010 target rate of 60 percent was met by the county in the years 2003, 2005, 2007, and 2009. Nevada met the goal in 2001-2003 and 2005.

Healthy People 2010 Objective (5-3): Reduce the overall percentage of diabetes that is clinically diagnosed.

Healthy People 2020 Objective D HP2020-1: Reduce the annual number of new cases of diagnosed diabetes in the population.

Proportion of Persons with Clinically Diagnosed Diabetes, Washoe County and Nevada and United States, BRFSS Data, 2000 - 2009.*



The proportion of persons with clinically diagnosed diabetes rose for Washoe County and Nevada from 2001-2008.

Since 2007, the Washoe County rate steadied and the state rate declined in 2008.

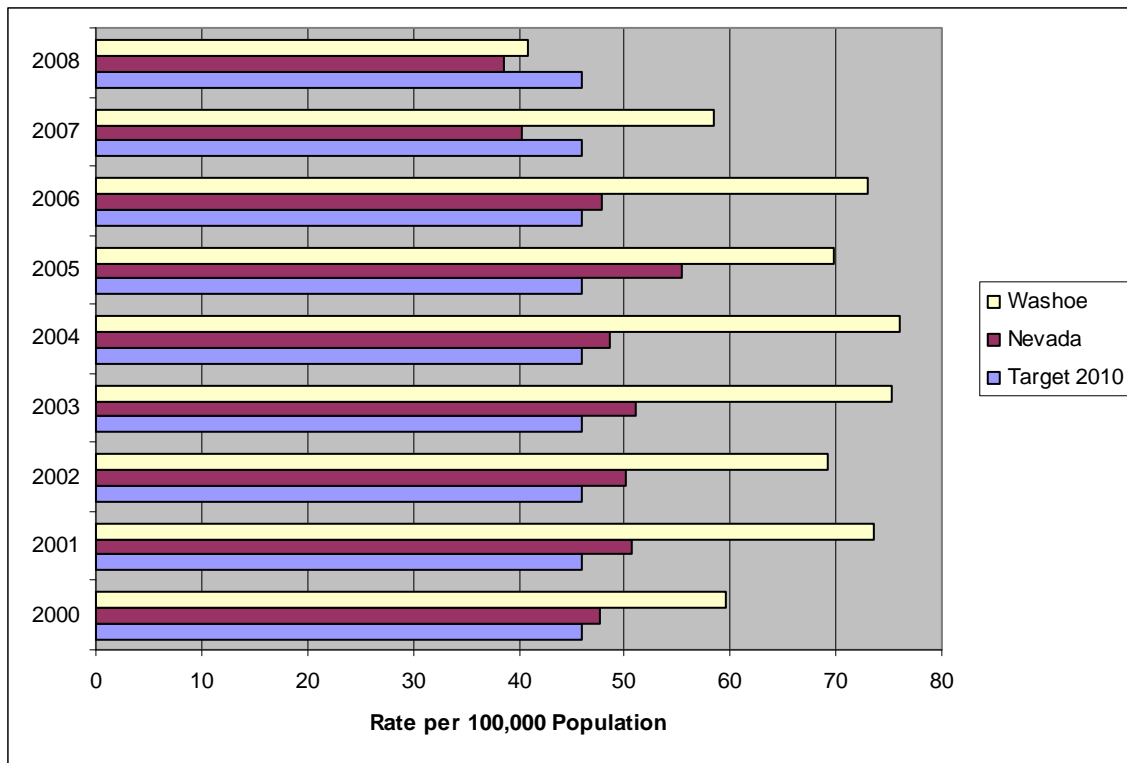
The Healthy People 2010 target of 3.8 percent was not met.

*These percentages are weighted to survey population characteristics. Not all counties were included in the survey results.

Healthy People 2010 Objective (5-5): Reduce the diabetes death rate.

Healthy People 2020 Objective D HP2020-3: Reduce the diabetes death rate.

Age-Adjusted Diabetes Death Rate, Washoe County and Nevada, 2000 - 2008.*



The diabetes mortality rate fluctuated for Washoe County and Nevada from 2000-2008, but ended lower in 2008 than when it started in 2000.

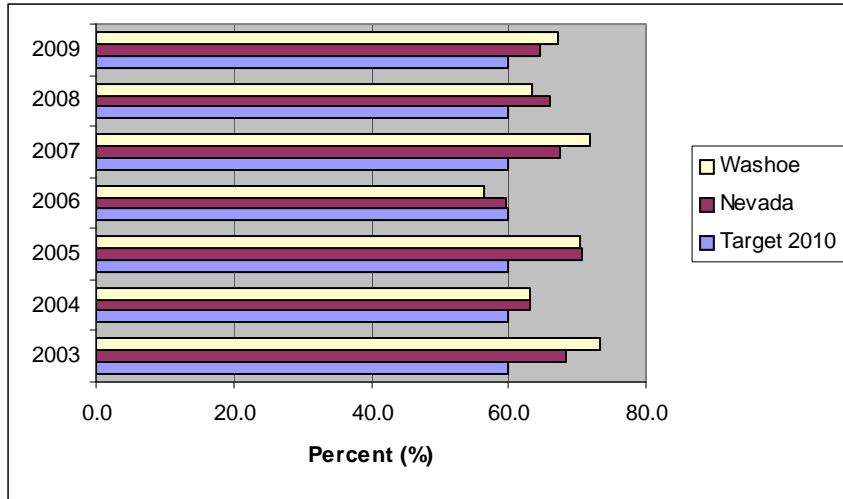
In 2008, both the county and the state met the Healthy People 2010 objective rate of 46 deaths per 100,000 population. Nevada has met the goal since 2007 as well.

*These rates are age-adjusted to the 2000 U.S. standard population. The Nevada data are from Nevada Vital Statistics Records. Note: 2007 and 2008 data are not final and are subject to change.

Healthy People 2010 Objective (5-12): Increase the proportion of adults with diabetes who have had a glycosylated hemoglobin measurement at least two times a year.

Healthy People 2020 Objective D HP2020-11: Increase the proportion of adults with diabetes who have a glycosylated hemoglobin measurement at least twice a year.

Proportion of Adults with Diabetes Who Have Had a Glycosylated Hemoglobin Measurement at Least Two Times a Year, Washoe County and Nevada, BRFSS Data, 2003 - 2009.*



According to the Behavioral Risk Factor Surveillance System, the proportion of diabetic persons in Washoe County who have had at least two glycosylated hemoglobin measurements in the past year was consistently above the Healthy People 2010 target of 60 percent during the study period for both the state and the county.

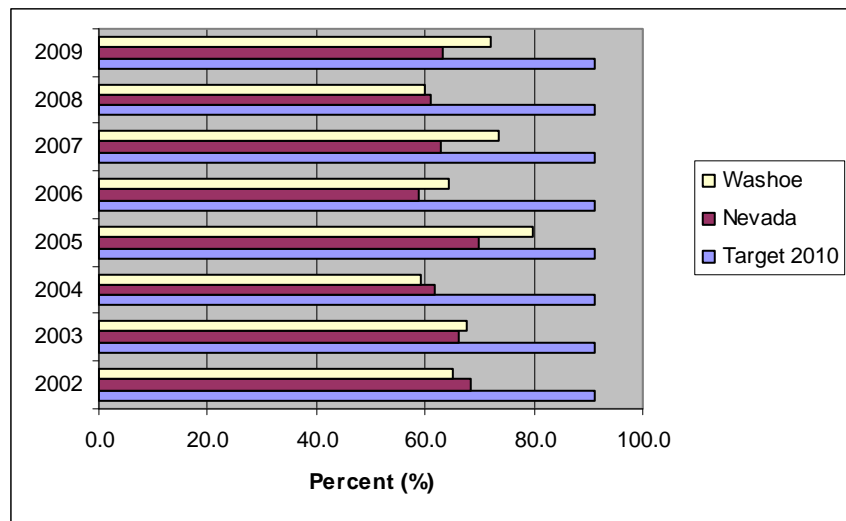
Healthy People 2010 Objective (5-14): Increase the proportion of adults with diabetes who have had at least an annual foot examination.

Healthy People 2020 Objective D HP2020-9: Increase the proportion of adults with diabetes who have had at least an annual foot examination.

Proportion of Adults with Diabetes Who Have Had at Least an Annual Foot Examination, Washoe County and Nevada, BRFSS Data, 2002 - 2009.*

The proportion of diabetic persons in Washoe County who had at least an annual foot examination was above the Nevada rate in five out of eight study years.

This proportion fluctuated over 2002-2009 for both the county and the state, neither reaching the Healthy People 2010 target of 90 percent.



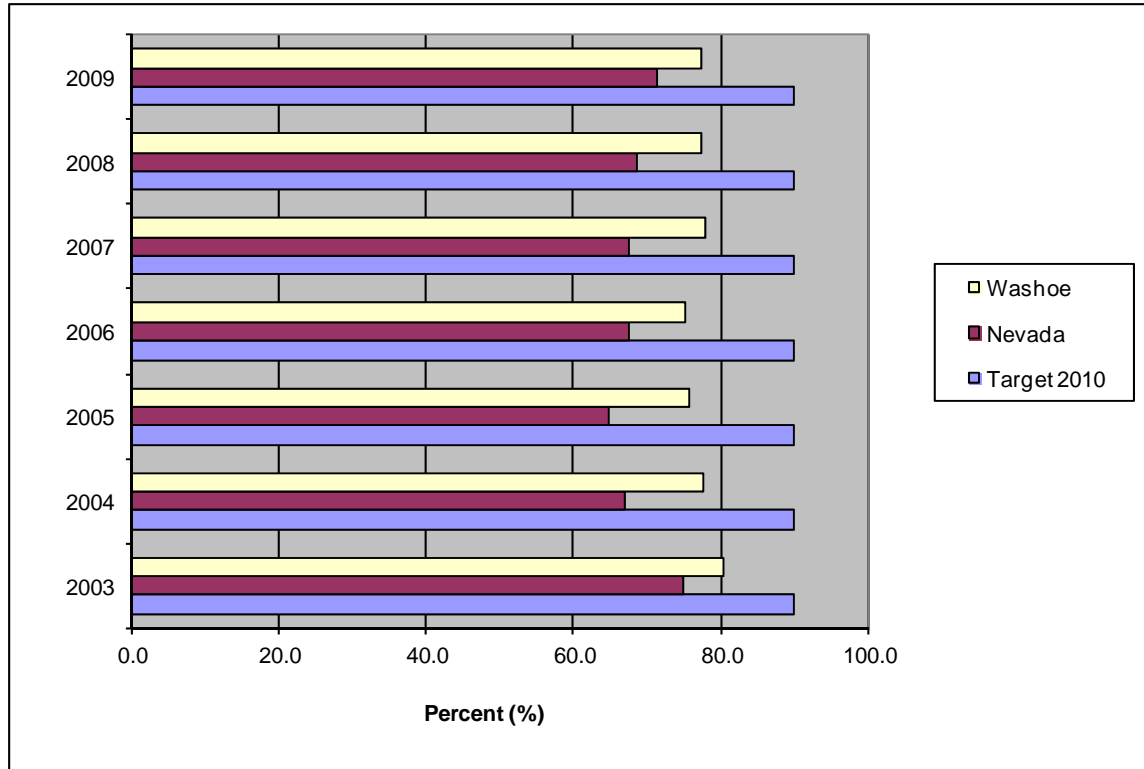
*These percentages are weighted to survey population characteristics. Not all counties were included in the survey results.

Education and Community-Based Programs

Healthy People 2010 Objective ECBP HP2010-1: Increase high school completion.

Healthy People 2020 Objective ECBP HP2020-6: Increase the proportion of the population that completes high school education.

High School Completion Rate (Percent), Washoe County and Nevada, 2003 - 2009.*



After an initial decline from 2003, the high school completion rate for Washoe County slightly increased over the study years 2004-2009. Neither Nevada nor Washoe County met the Healthy People 2010 target of 90 percent.

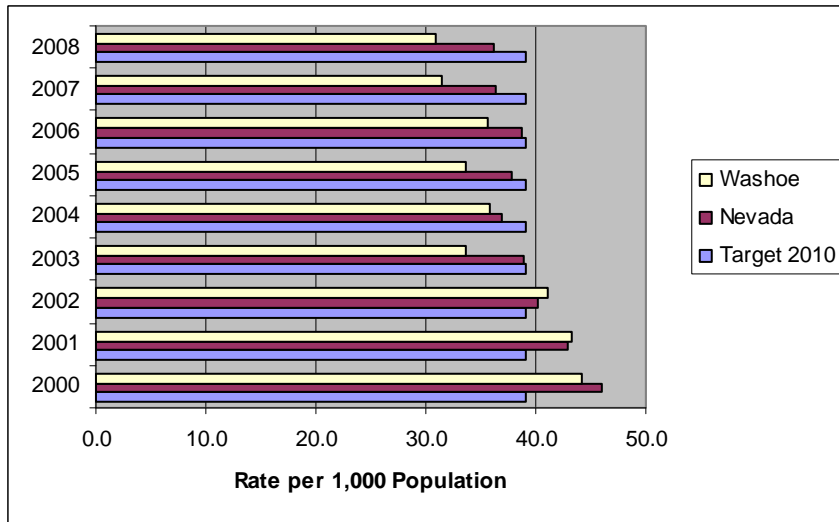
*The Nevada data are from the Nevada Annual Reports of Accountability

Family Planning

Healthy People 2010 Objective (9-7): Reduce pregnancies among adolescent females.

Healthy People 2020 Objective FP HP2020-8: Reduce pregnancies among adolescent females, aged 15-17 and aged 18-19.

Adolescent Pregnancy Rate Among Females Aged 15 to 17 Years, Washoe County and Nevada, 2000 - 2008.*

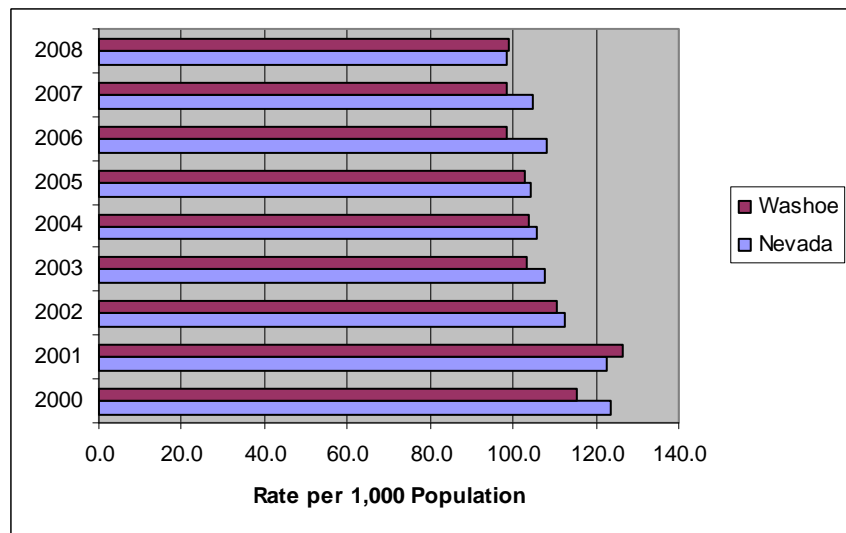


The rate of adolescent pregnancy among females, aged 15 to 17 years, declined for Washoe County from 2000-2008.

The Nevada rate, after a decline from 2000—2004, steadied after a slight increase in 2005-2006.

The Healthy People 2010 target rate of 39 per 1,000 was met by both the county and the state from 2003-2008.

Adolescent Pregnancy Rate Among Females Aged 18 to 19 Years, Washoe County and Nevada, 2000 - 2008.*



After an initial increase in the year 2001, the adolescent pregnancy rate among females, aged 18 to 19 years, declined and steadied, only slightly fluctuating for Nevada and Washoe County from 2002-2008.

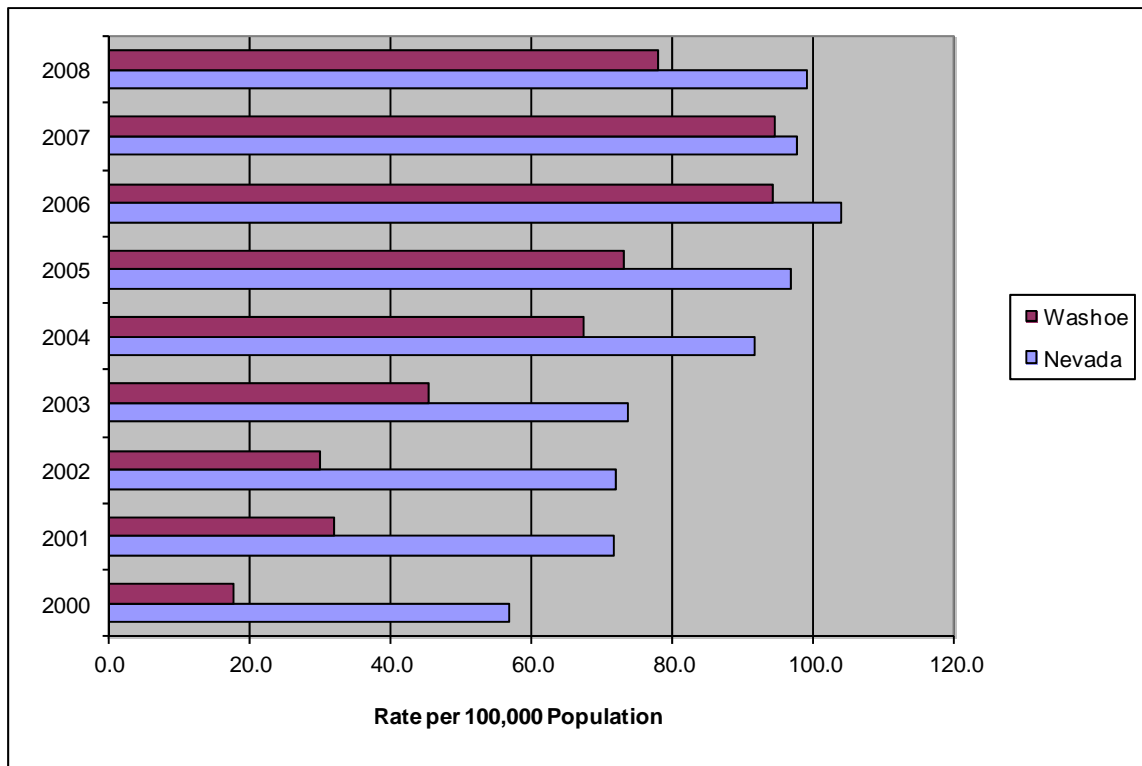
This is a new Healthy People 2020 objective, so no Healthy People 2010 target exists.

*The Nevada data are from Nevada Vital Statistics Records.
Note: 2008 data are not final and are subject to change.

Healthcare-Associated Infections

Healthy People 2020 Objective HAI HP2020-2: Reduce invasive methicillin-resistant staphylococcus aureus (MRSA) infections.

Rate of Invasive Methicillin-Resistant Staphylococcus Aureus (MRSA) Infections, Nevada, 2000 - 2008.*



The rate of methicillin-resistant staphylococcus aureus (MRSA) infections markedly increased for both Washoe County and Nevada during the years 2000—2006, then decreased for 2007-2008. The county rate was consistently lower than the state rate.

This is a new objective for Healthy People 2020, therefore no Healthy People 2010 target exists.

From 2004-2008, Washoe County consistently reported a MRSA infection rate over ten times the new Healthy People 2020 target rate of 6.56 infections per 100,000 population during the years 2004-2008.

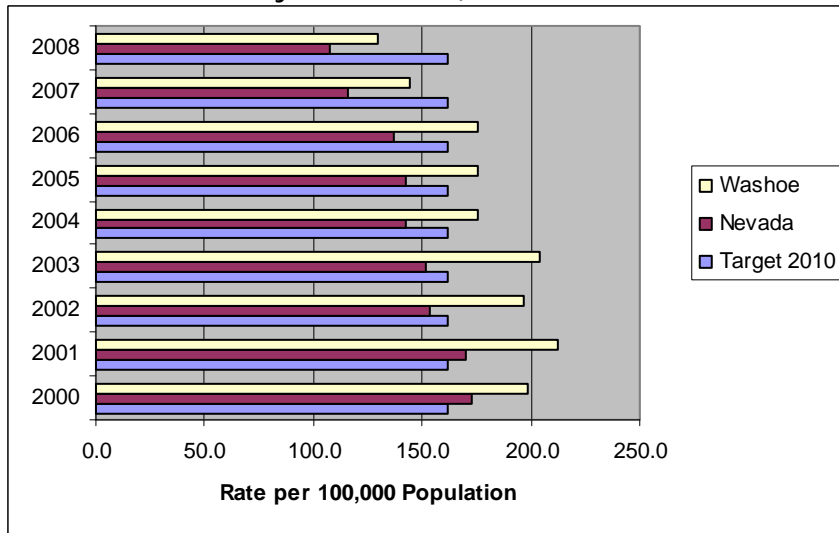
*The Nevada data are from the Nevada Inpatient Hospital Discharge Database (NIHDD).

Heart Disease and Stroke

Healthy People 2010 Objective (12-1): Reduce coronary heart disease deaths.

Healthy People 2020 Objective HDS HP2020-2: Reduce coronary heart disease deaths.

Age-Adjusted Coronary Heart Disease Death Rate, Washoe County and Nevada, 2000 - 2008.*



The coronary heart disease mortality rate declined for Washoe County and Nevada from 2000-2008.

Nevada met the goal rate of 162 deaths per 100,000 population set by Healthy People 2010 from the year 2002 and the county has met the goal from 2007.

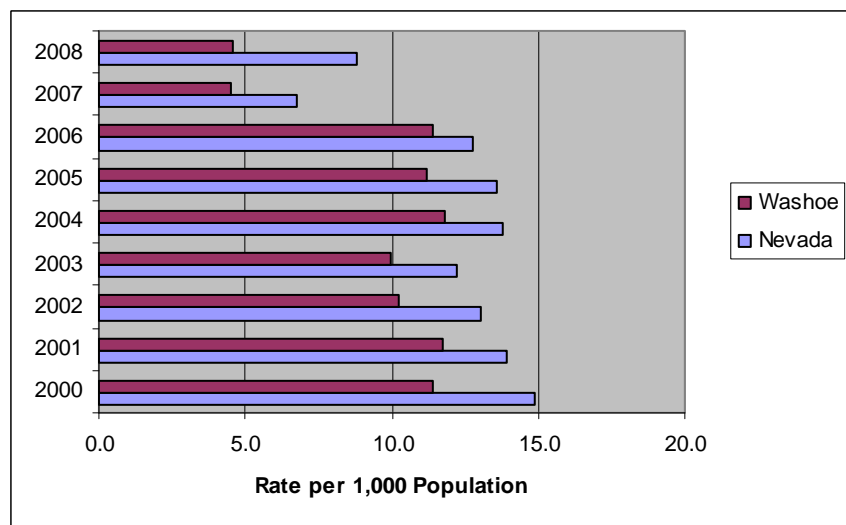
*These rates are age-adjusted to the 2000 U.S. standard population. The Nevada data are from Nevada Vital Statistics Records. Note: 2007 and 2008 data are not final and are subject to change.

Healthy People 2010 Objective (12-6.): Reduce the rate of hospitalizations of older adults aged 65 years and older with congestive heart failure.

Hospitalization Rate of Older Adults Aged 65 Years and Older With Congestive Heart Failure, Washoe County and Nevada, 2000 - 2008.*

The rate of hospitalizations for older adults, aged 65 years and older, with congestive heart failure fluctuated for both Nevada and Washoe County over the study years 2000-2008.

Washoe County's 2008 rate was approximately half of the state rate for the year.

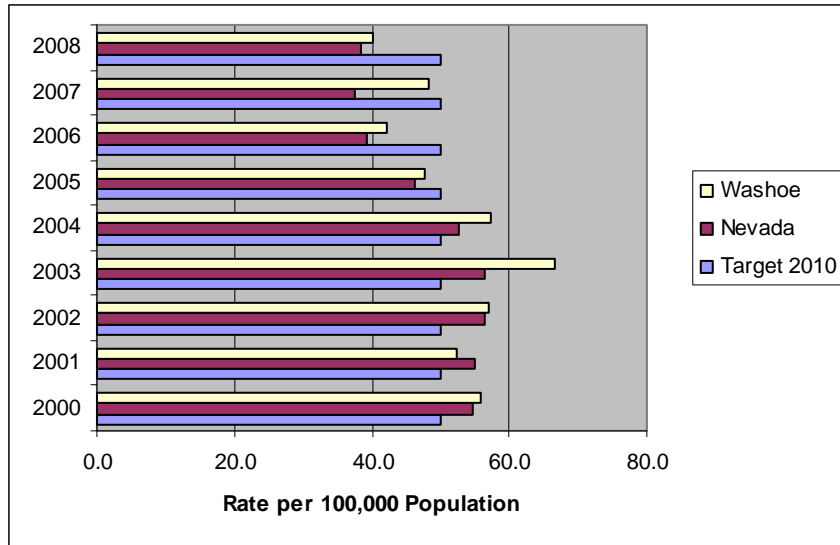


*The Nevada data are from Nevada Inpatient Hospital Discharge (NIHDD).

Healthy People 2010 Objective (12-7): Reduce stroke deaths.

Healthy People 2020 Objective HDS HP2020-3: Reduce stroke deaths.

Age-Adjusted Stroke Death Rate, Washoe County and Nevada, 2000 - 2008.*



The stroke mortality rate declined for the state and fluctuated for Washoe County from 2000-2008.

The target rate of 50 deaths per 100,000 population set by Healthy People 2010 was met by both the state and the county from the year 2005.

*These rates are age-adjusted to the 2000 U.S. standard population. The Nevada data are from Nevada Vital Statistics Records. Note: 2007 and 2008 data are not final and are subject to change.

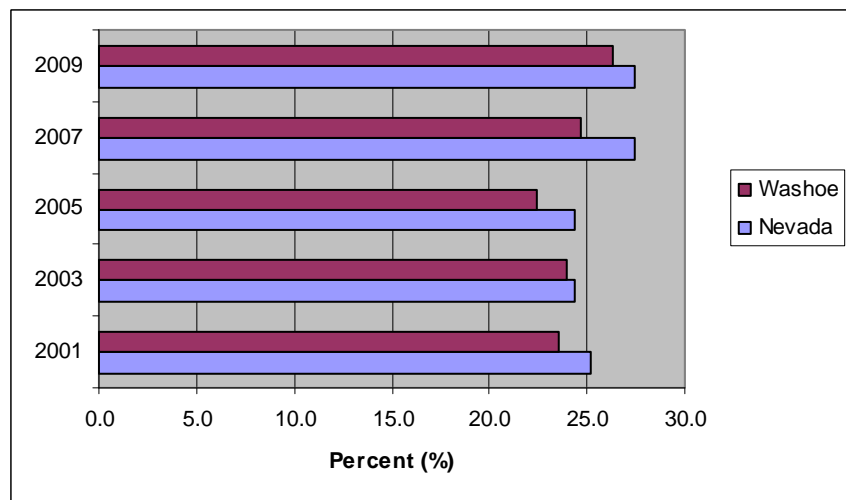
Healthy People 2010 Objective (12-9a.): Reduce the proportion of adults with high blood pressure.

Healthy People 2020 Objective HDS HP2020-5.1: Reduce the proportion of adults with hypertension.

Proportion of Adults with High Blood Pressure, Washoe County and Nevada, BRFSS Data, 2001, 2003, 2005, 2007, 2009.*

The proportion of adults with high blood pressure increased for Washoe County and Nevada since 2005. The county rate was lower than the state rate over the study years.

The Healthy People 2010 target of 14 percent was not attained by either Washoe County or Nevada.

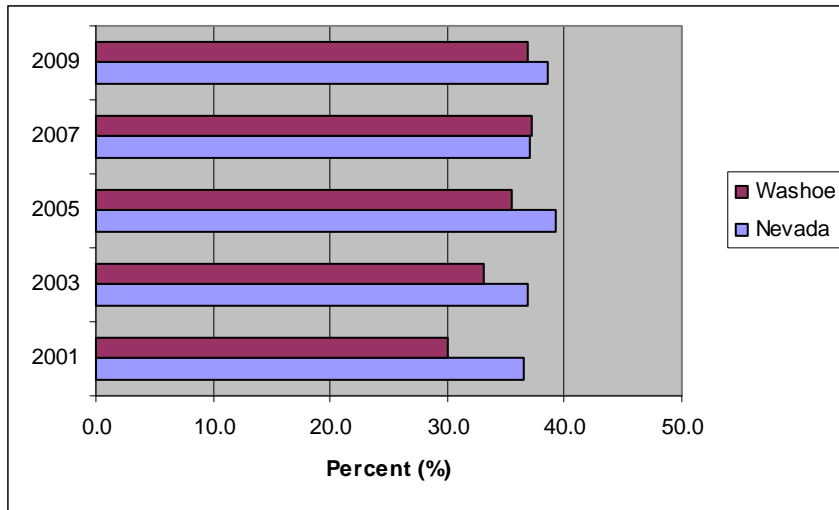


*The Nevada data are from Nevada Inpatient Hospital Discharge (NIHDD).

Healthy People 2010 Objective (12-14): Reduce the proportion of adults with high blood cholesterol levels.

Healthy People 2020 Objective HDS HP2020-7: Reduce the proportion of adults with high blood cholesterol levels.

Proportion of Adults with High Blood Cholesterol Levels, Washoe County and Nevada, BRFSS Data, 2001, 2003, 2005, 2007, 2009.*



According to the Behavioral Risk Factor Surveillance System, the proportion of adults with high blood cholesterol levels fluctuated for Nevada for the study years.

The Washoe County rate increased from 2001. The county rate was lower than the state rate for each of the study years. The Healthy People 2010 goal of 17 percent was not met.

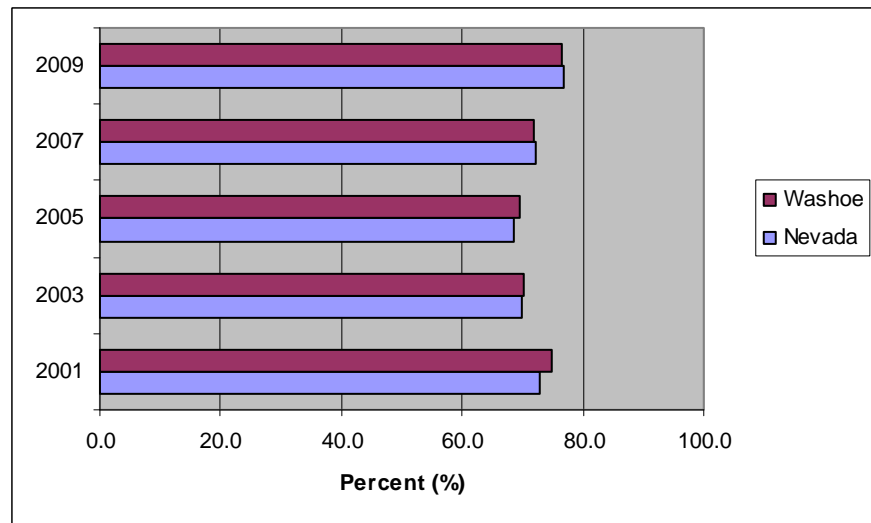
Healthy People 2010 Objective (12-15): Increase the proportion of adults having had their blood cholesterol checked within the preceding 5 years.

Healthy People 2020 Objective HDS HP2020-6: Increase the proportion of adults having had their blood cholesterol checked within the preceding 5 years.

Proportion of Adults Having Their Blood Cholesterol Checked Within the Preceding 5 Years, Washoe County and Nevada, BRFSS Data, 2001, 2003, 2005, 2007, 2009.*

The percentage of adults having their blood cholesterol checked within the preceding five years fluctuated for Washoe County and Nevada.

The Healthy People 2010 goal of 80 percent was not attained by the county nor the state.



*These percentages are weighted to survey population characteristics. Not all counties were included in the survey results.

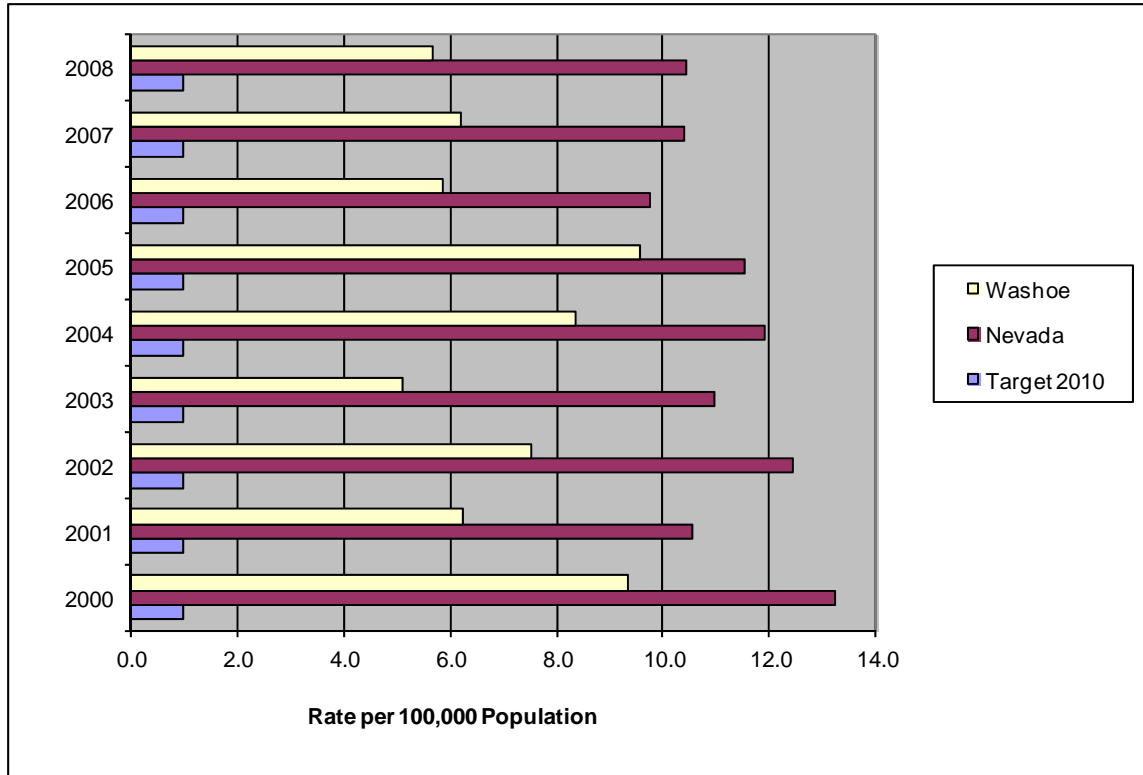
Human Immunodeficiency Virus (HIV)

Healthy People 2010 Objective (13-1): Reduce AIDS among adults and adolescents.

Healthy People 2020 Objective HIV HP2020-1: Reduce acquired immune deficiency syndrome (AIDS) among adults and adolescents.

NOTE: This objective was removed from the final HP 2020 release.

Reported AIDS Cases, Washoe County and Nevada, 2000 - 2008.*



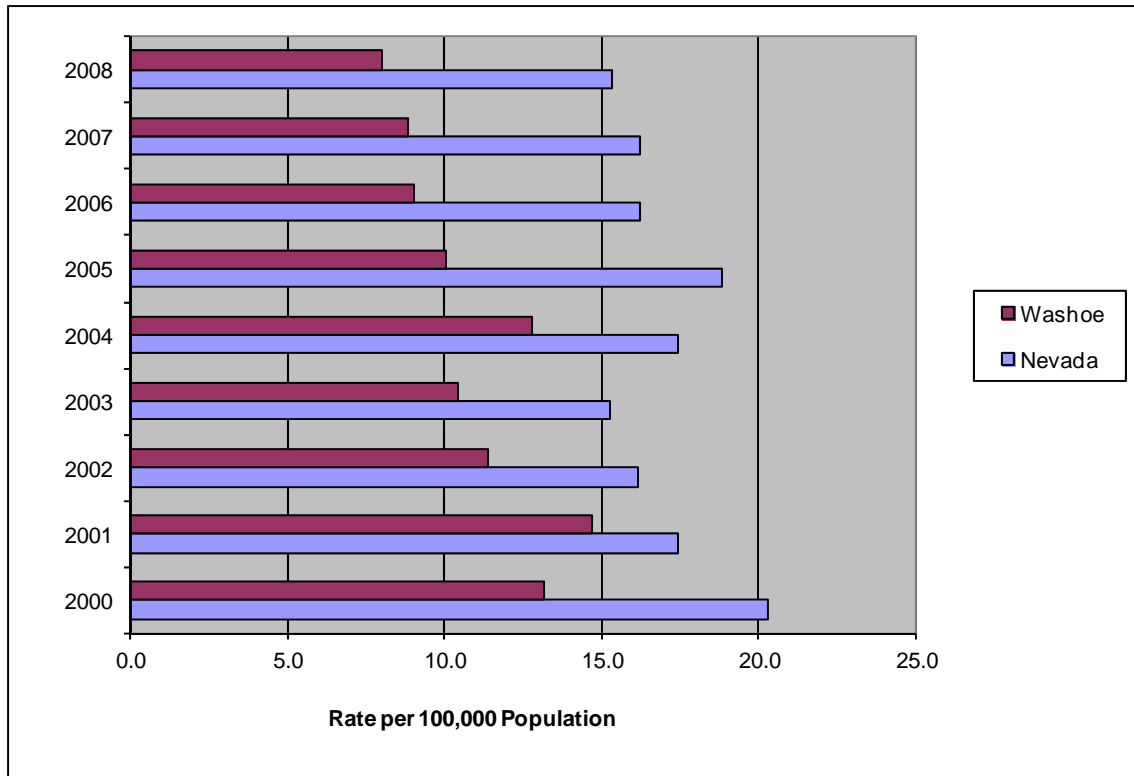
The number of reported AIDS cases from 2000-2008 fluctuated for Washoe County and Nevada. The rate declined between the years 2005 and 2008 for both. Washoe County's rate was lower than the state rate for each of the study years. The Healthy People 2010 target rate of 1.0 per 100,000 population was not met.

*The Nevada data are from the Enhanced HIV/AIDS Reporting System (eHARS).

Healthy People 2010 Objective (13-5): Reduce the number of new cases of human immunodeficiency virus (HIV) and acquired immune deficiency syndrome (AIDS) diagnosed among adults and adolescents.

Healthy People 2020 Objective HIV HP2020-4: Reduce the number of new AIDS cases among adults and adolescents.

Reported New Cases of HIV/AIDS, Washoe County and Nevada, 2000 - 2008.*



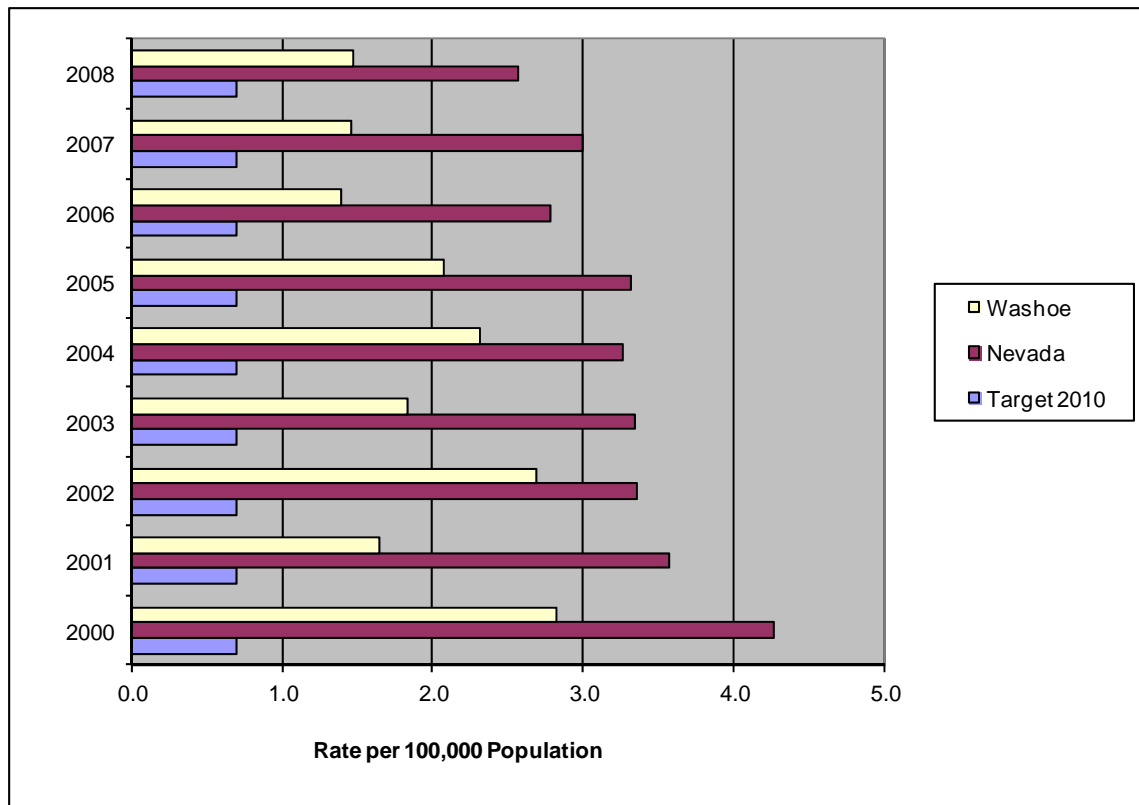
The number of reported new cases of HIV/AIDS fluctuated for Nevada and declined for Washoe County over the study years 2000-2008. In 2008, the county rate was approximately half of the state rate. The Healthy People 2010 target is still to be determined.

*The Nevada data are from the Enhanced HIV/AIDS Reporting System (eHARS).

Healthy People 2010 Objective (13-14): Reduce the deaths from HIV infection.

Healthy People 2020 Objective HIV HP2020-12: Reduce deaths from HIV infection.

Age-Adjusted HIV Infection Death Rate, Washoe County and Nevada, 2000 - 2008. *



Between 2000-2008, the HIV infection mortality rate declined for both Washoe County and Nevada. Neither the county, nor the state, met the Healthy People 2010 objective rate of .7 deaths per 100,000 population. Washoe County's rate was lower than the Nevada rate for each of the study years.

*These rates are age-adjusted to the year 2000 U.S. standard population. The Nevada data are from the Nevada Vital Statistics Records.

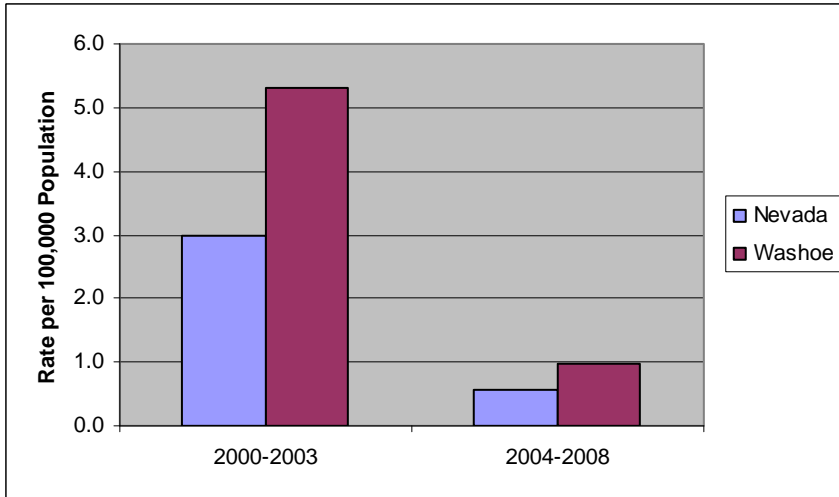
Note: 2007 and 2008 data are not final and are subject to change.

Immunization and Infectious Diseases

Healthy People 2010 Objective (14-6.): Reduce new cases of Hepatitis A.

Healthy People 2020 Objective IID HP2020-23: Reduce Hepatitis A.

Aggregated Rate of Reported New Cases of Hepatitis A, Washoe County and Nevada, NEDSS Data, 2000 - 2003 and 2004 - 2008.*



The rate of reported new cases of hepatitis A declined for the state and Washoe County during the years 2000—2008.

Both rates were lower than the Healthy People 2010 objective rate of 4.3 per 100,000 population for the years 2004-2008.

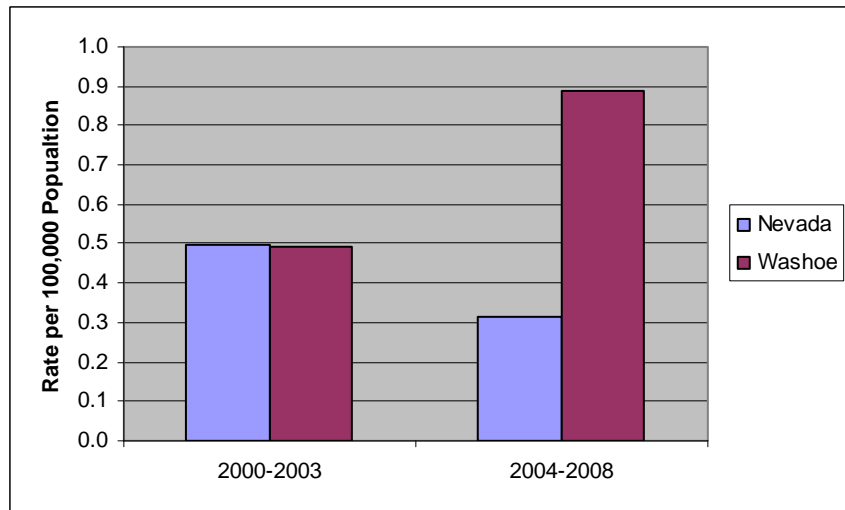
Healthy People 2010 Objective (14-7): Reduce new cases of meningococcal disease.

Healthy People 2020 Objective IID HP2020-3: Reduce meningococcal disease.

The rate of reported new cases of meningococcal disease declined for Nevada, but increased for Washoe County during the study years 2000-2008. The Washoe County rate for meningococcal disease was almost three times the state rate on aggregate for the years 2004-2008.

However, both the county and the state exceeded the goal rate of 1.0 per 100,000.

Aggregated Rate of Reported New Cases of Meningococcal Disease, Washoe County and Nevada, NEDSS Data, 2000 - 2003 and 2004 - 2008.*

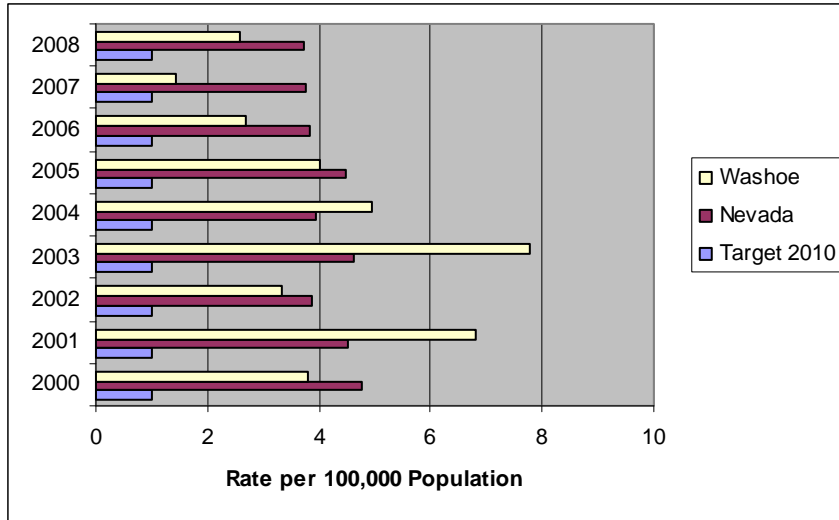


*The Nevada data are from the National Electronic Telecommunications System for Surveillance (NEDSS).

Healthy People 2010 Objective (14-11): Reduce new cases of tuberculosis.

Healthy People 2020 Objective IID HP2020-29: Reduce tuberculosis (TB).

Rate of Reported New Cases of Tuberculosis, Washoe County and Nevada, NEDSS Data, 2000 - Most 2008.*



The rate of reported new cases of tuberculosis declined in Washoe County from 2003—2007. The 2008 rate was less than the 2000.

The rate has fluctuated this decade for both the state and the county.

The Healthy People 2010 target rate of 1.0 per 100,000 population was not met.

*The Nevada data are from the National Electronic Telecommunications System for Surveillance (NEDSS).

Healthy People 2010 Objective (14-17): Reduce hospitalization caused by peptic ulcer disease in the United States.

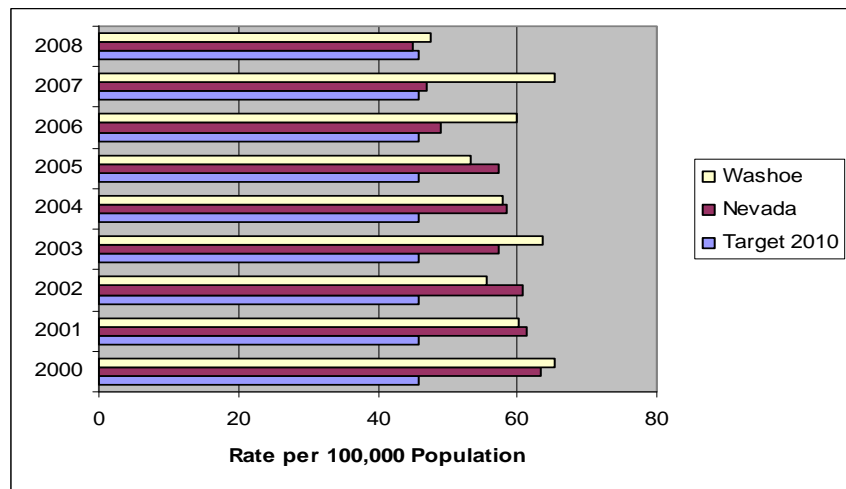
Healthy People 2020 Objective IID HP2020-10: Reduce hospitalization caused by peptic ulcer disease in the United States.

NOTE: This objective was removed from the final HP 2020 release.

Age-Adjusted Rate of Hospitalizations for Peptic Ulcer Disease, Washoe County and Nevada, 2000 - 2008*.

The hospitalization rate for peptic ulcer disease declined for Nevada and fluctuated for Washoe County during the years 2000 to 2008.

The goal rate of 46 per 100,000 population set by Healthy People 2010 was met only by Nevada in the year 2008.

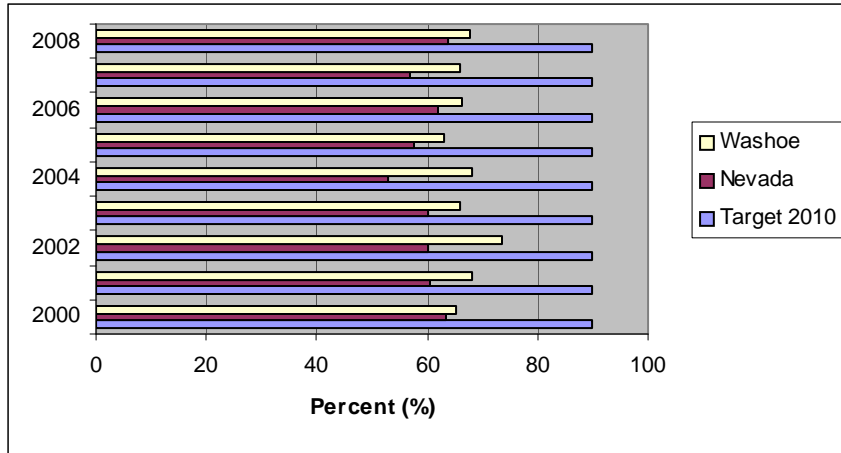


*These rates are age-adjusted to the 2000 U.S. standard population. The Nevada data are from the National Electronic Telecommunications System for Surveillance (NEDSS).

Healthy People 2010 Objective (14-29a.): Increase the proportion of adults, aged 65 years and older, who are vaccinated annually against influenza.

Healthy People 2020 Objective IID HP2020-12.7: Increase the proportion of non-institutionalized adults, aged 65 years and older, who are vaccinated annually against seasonal influenza.

Proportion of Adults Aged 65 Years and Older Who Are Vaccinated Against Influenza, Nevada and United States, BRFSS Data, 2000 - Most Current Data.*



The percentage of adults, aged 65 years and older, who were vaccinated against influenza fluctuated for Nevada and Washoe County from 2000-2008.

The Healthy People 2010 objective of 90 percent was not met.

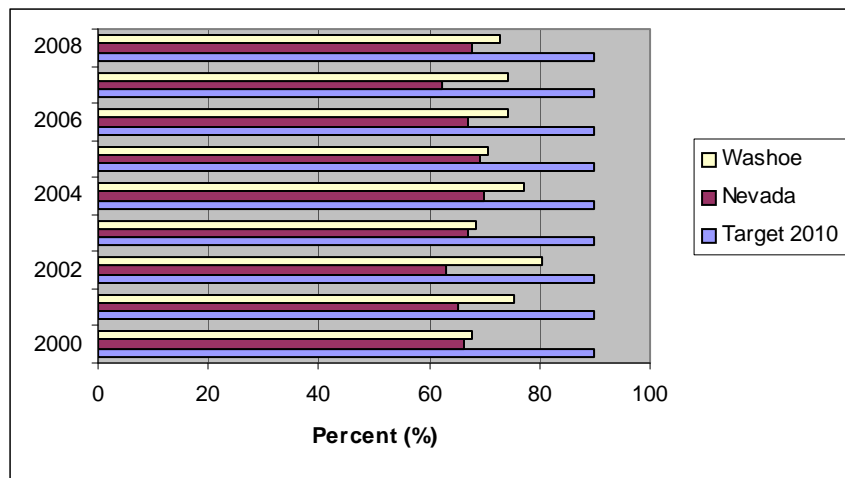
Healthy People 2010 Objective (14-29b.): Increase the proportion of adults, aged 65 years and older, who have ever received the pneumococcal vaccine.

Healthy People 2010 Objective IID HP 2020-13.1: Increase the proportion of non-institutionalized adults, aged 65 years and older, who are vaccinated against pneumococcal disease.

Proportion of Adults Aged 65 Years and Older Who Have Ever Received the Pneumococcal Vaccine, Nevada and United States, BRFSS Data, 2000 - Most Current Data.*

The percentage of adults, aged 65 years and older, who received the pneumococcal vaccine fluctuated for the state and Washoe County. The county's rate has steadied during the years 2006—2008.

The target of 90 percent set by Healthy People 2010 was not met.



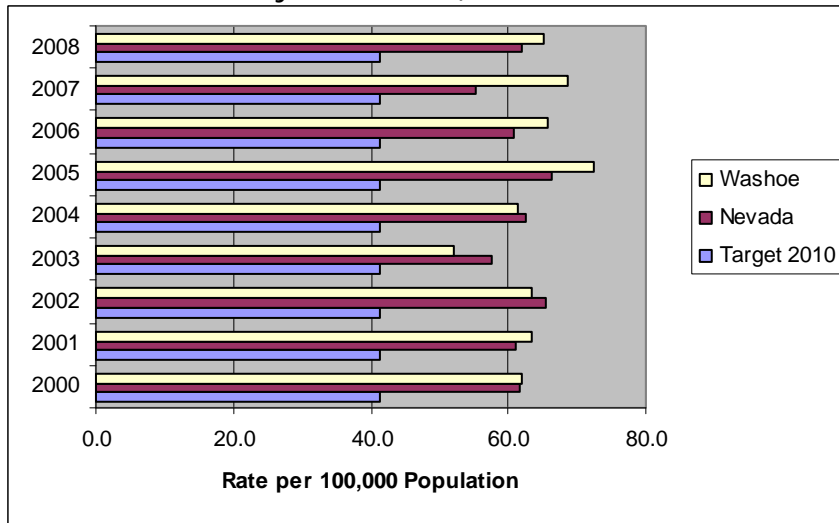
*These percentages are weighted to survey population characteristics. Not all counties were included in the survey results.

Injury and Violence Prevention

Healthy People 2010 Objective (15-1): Reduce hospitalizations for nonfatal head injuries.

Healthy People 2020 Objective IVP HP2020-2.2: Reduce hospitalizations for nonfatal traumatic brain injuries.

Hospitalization Rate for Non-Fatal Head Injuries, Washoe County and Nevada, 2000 - 2008.*



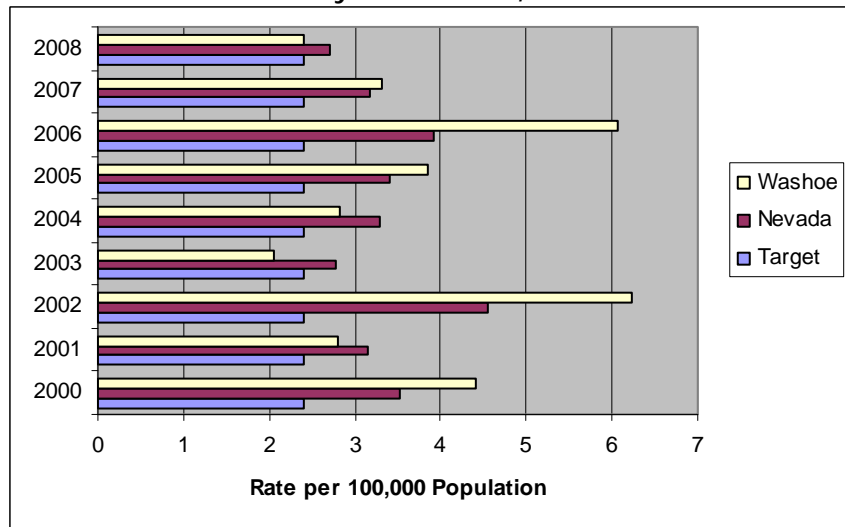
From 2000-2008, the rate of hospitalizations for non-fatal head injuries fluctuated for Nevada and Washoe County.

The target rate of 41.2 hospitalizations per 100,000 population set by Healthy People 2010 was not met.

Healthy People 2010 Objective (15-2): Reduce hospitalizations for nonfatal spinal cord injuries.

Healthy People 2020 Objective IVP HP2020-3: Reduce fatal and nonfatal traumatic spinal cord injuries.

Hospitalization Rate for Non-Fatal Spinal Cord Injuries, Washoe County and Nevada, 2000 - 2008.*



The hospitalization rate for non-fatal spinal cord injuries fluctuated for Washoe County and Nevada from 2000—2008.

The rate declined from 2006-2008.

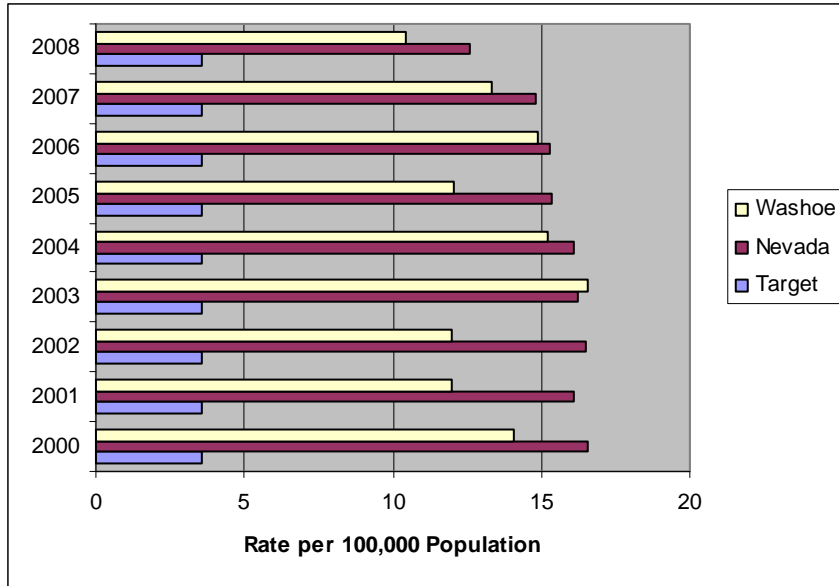
The Healthy People 2010 objective rate of 2.4 per 100,000 population was met by Washoe County in the years 2003 and 2008.

*The Nevada data are from the Nevada Inpatient Hospital Discharge Database (NIHDD).

Healthy People 2010 Objective (15-3): Reduce firearm-related deaths.

Healthy People 2020 Objective IVP HP2020-30: Reduce firearm-related deaths.

Age-Adjusted Firearm Related Death Rate, Washoe County and Nevada, 2000 - 2008.*



The firearm related mortality rate declined in Nevada, while the Washoe County rate fluctuated from 2000-2008. The state rate was consistently higher during the study years.

The Healthy People 2010 goal rate of 3.6 per 100,000 population was not met.

Healthy People 2010 Objective (15-8): Reduce deaths caused by poisonings.

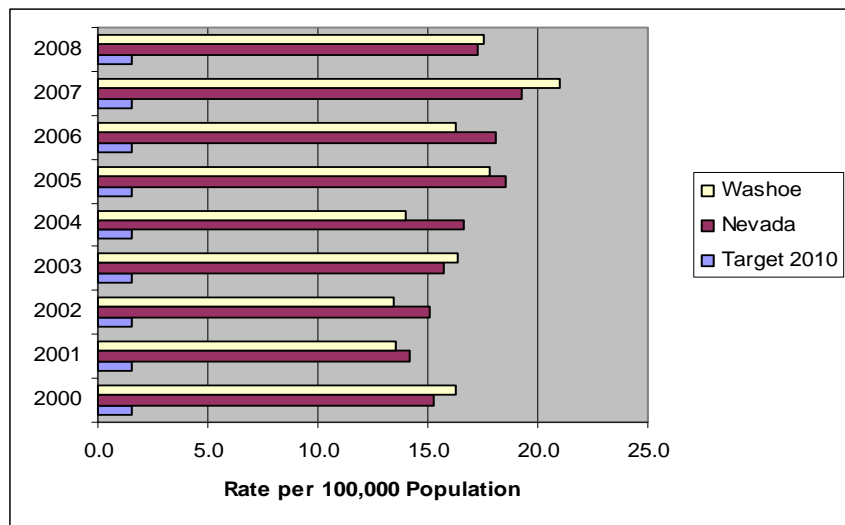
Healthy People 2020 Objective IVP HP2020-9: Prevent an increase in the rate of poisoning deaths.

Age-Adjusted Death Rate Caused by Poisoning, Washoe County and Nevada, 2000 - 2008.*

During the years 2001—2007, the poisoning mortality rate increased in Nevada.

The Washoe County rate fluctuated from 2000-2008.

The goal rate of 1.5 deaths per 100,000 population set by Healthy People 2010 was not attained by either the county or the state.

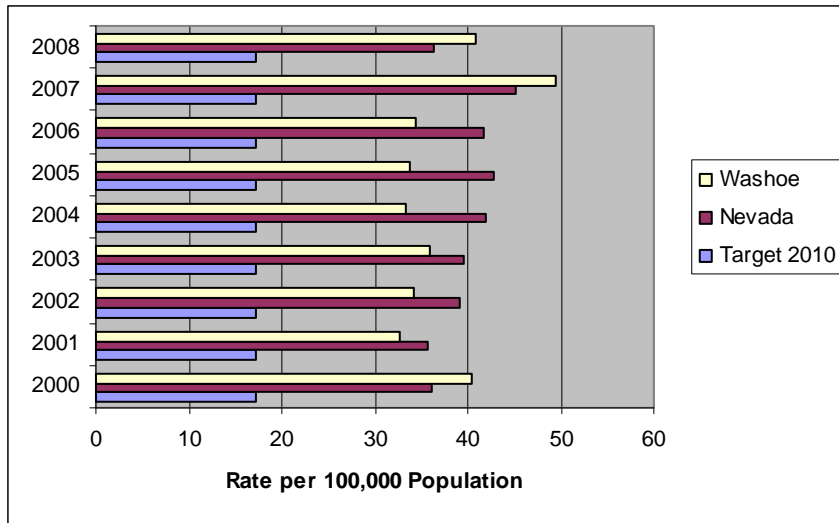


*These rates are age-adjusted to the 2000 U.S. standard population. The Nevada data are from Nevada Vital Statistics Records. Note: 2007 and 2008 data are not final and are subject to change.

Healthy People 2010 Objective (15-13): Reduce deaths caused by unintentional injuries.

Healthy People 2020 Objective IVP HP2020-11: Reduce unintentional injury deaths.

Age-Adjusted Death Rate Caused by Unintentional Injuries, Washoe County and Nevada, 2000 - 2008.*



The unintentional injury mortality rate fluctuated for Washoe County from 2000-2008, while the Nevada rate rose from 2000—2007, before declining in 2008.

The Healthy People 2010 target rate of 17.1 per 100,000 population was not met during any of the study years.

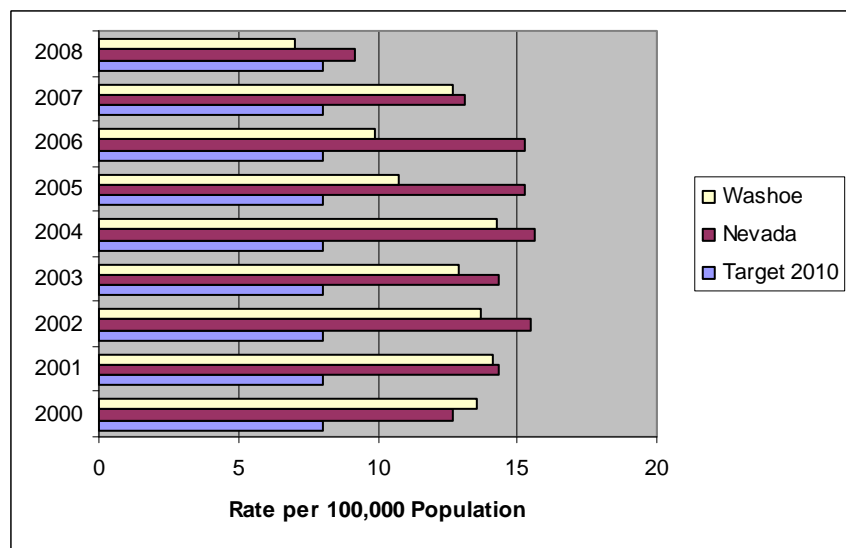
Healthy People 2010 Objective (15-15a.): Reduce deaths caused by motor vehicle crashes.

Healthy People 2020 Objective IVP HP2020-13: Reduce motor vehicle crash-related deaths.

Age-Adjusted Death Rate Caused by Motor Vehicle Crashes, Washoe County and Nevada, 2000 - 2008.*

From the years 2000-2008, the motor vehicle crash mortality rate fluctuated for the state and Washoe County.

Washoe County met the Healthy People 2010 goal rate of 8 deaths per 100,000 population in 2008.

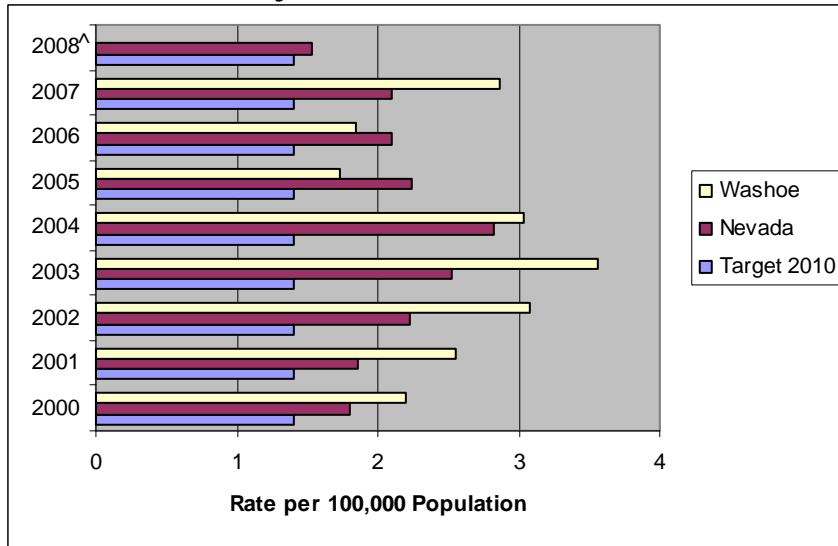


*These rates are age-adjusted to the 2000 U.S. standard population. The Nevada data are from Nevada Vital Statistics Records. Note: 2007 and 2008 data are not final and are subject to change.

Healthy People 2010 Objective (15-16): Reduce pedestrian deaths on public roads.

Healthy People 2020 Objective IVP HP2020-18: Reduce pedestrian deaths on public roads.

Age-Adjusted Pedestrian Death Rate on Public Roads, Washoe County and Nevada, 2000 - 2008.*



During 2000—2008, the pedestrian mortality rate on public roads has fluctuated in Nevada and Washoe County.

The target rate of 1.4 deaths per 100,000 population set by Healthy People 2010 was met by Washoe County in 2008.

[^] No rate was reported for Washoe County in 2008 due to small counts.

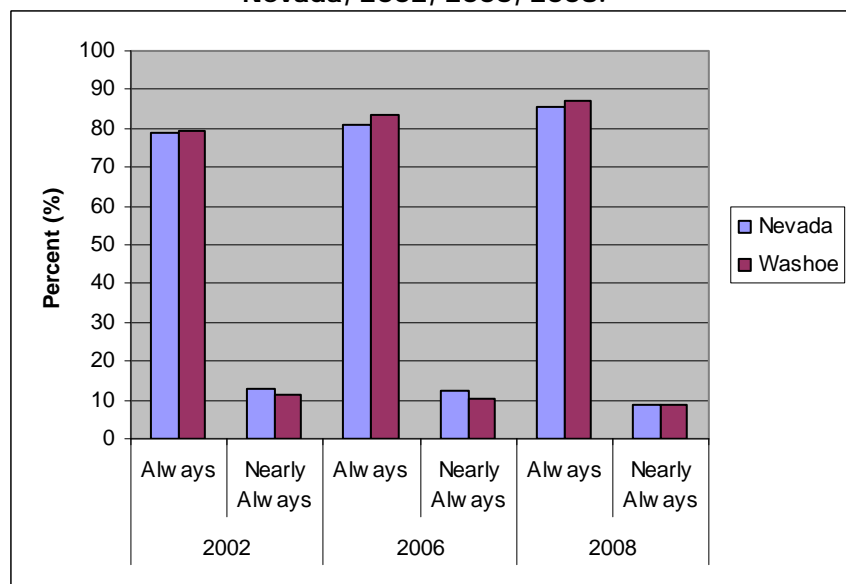
*These rates are age-adjusted to the 2000 U.S. standard population. The Nevada data are from Nevada Vital Statistics Records. Note: 2007 and 2008 data are not final and are subject to change.

Healthy People 2010 Objective (15-19): Increase the use of safety belts.

Healthy People 2020 Objective IVP HP2020-15: Increase use of safety belts.

Proportion of People Using Safety Belts, Washoe County and Nevada, 2002, 2006, 2008.*

The number of people always using safety belts increased for the state and Washoe County during the study years. Both are close to the Healthy People 2010 objective of 89 percent.

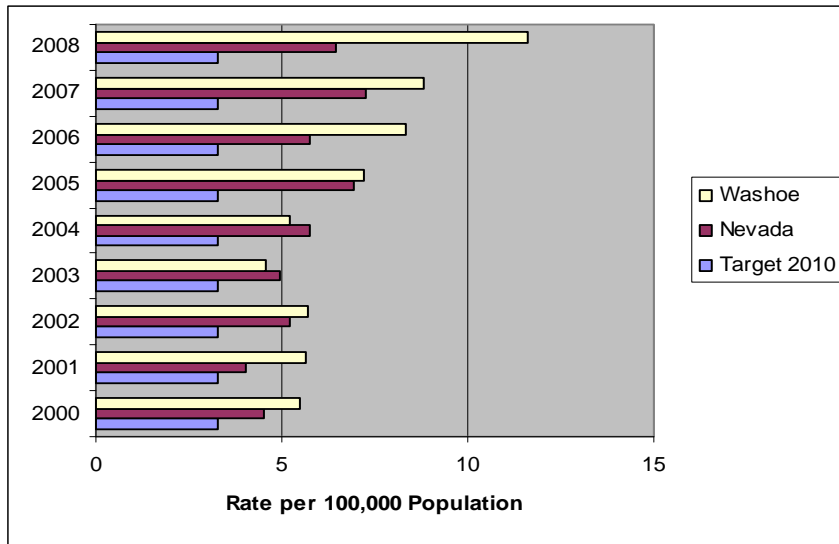


*These percentages are weighted to survey population characteristics. Not all counties were included in the survey results.

Healthy People 2010 Objective (15-27): Reduce deaths from falls.

Healthy People 2020 Objective IVP HP2020-23: Prevent an increase in the rate of fall-related deaths.

Age-Adjusted Death Rate From Falls, Washoe County and Nevada, 2000 - 2008.*



The fall mortality rate increased from 2000-2008 for Washoe County and the state.

The Healthy People 2010 goal rate of 3.3 deaths per 100,000 population was not met during 2000-2008.

The county trend is moving away from the target, with a rate approximately four times higher than the Healthy People 2010 goal.

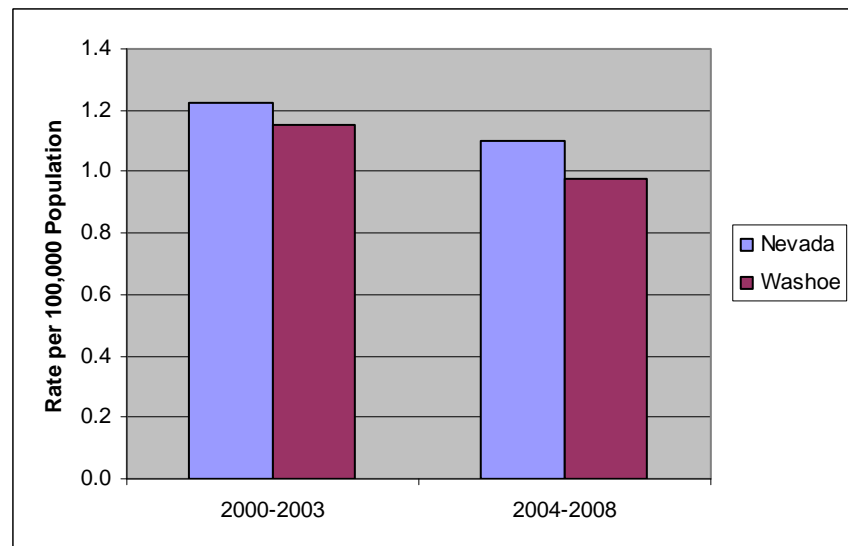
Healthy People 2010 Objective (15-29): Reduce deaths from drowning.

Healthy People 2020 Objective IVP HP2020-27: Reduce drowning deaths.

Aggregated Age-Adjusted Death Rate From Drowning, Washoe County and Nevada, 2000 - 2003 and 2004 - 2008.*

The average drowning mortality rate decreased for Nevada and Washoe County during the study years.

Both the county and state are moving towards the Healthy People 2010 target rate of .7 deaths per 100,000 population, but have not met it yet.

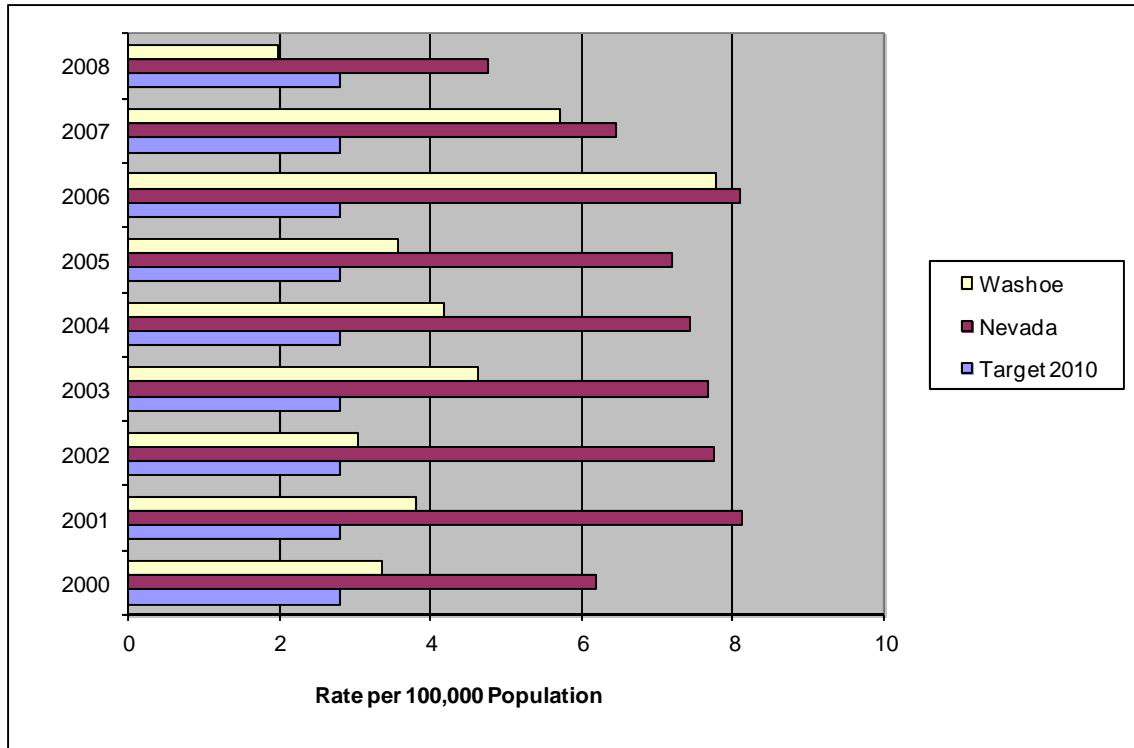


*These rates are age-adjusted to the 2000 U.S. standard population. The Nevada data are from Nevada Vital Statistics Records. Note: 2007 and 2008 data are not final and are subject to change.

Healthy People 2010 Objective (15-32): Reduce homicides.

Healthy People 2020 Objective IVP HP2020-29: Reduce homicides.

Age-Adjusted Death Rate from Homicides, Washoe County and Nevada, 2000 - 2008.*



The homicide mortality rate fluctuated over the study years 2000-2008, but declined for both the state and Washoe County after the year 2006. The Nevada rate was higher than the county rate during this period. The Healthy People 2010 target rate of 2.8 homicide deaths per 100,000 population was met by Washoe County in the year 2008.

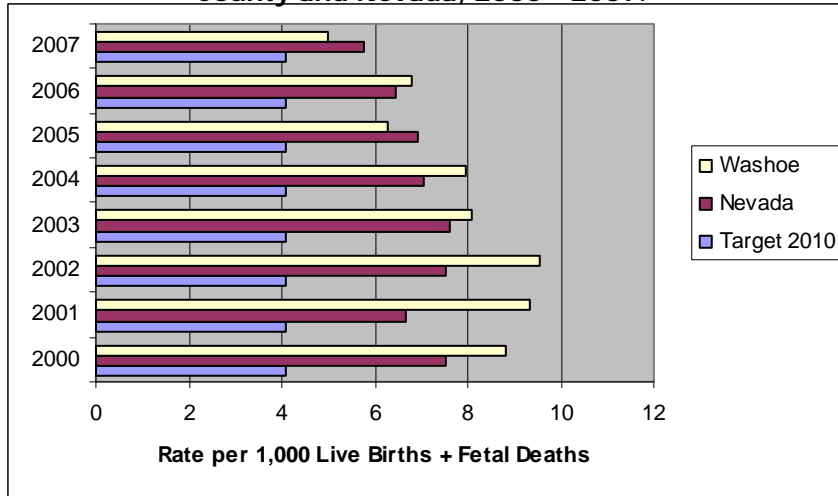
*These rates are age-adjusted to the 2000 U.S. standard population. The Nevada data are from Nevada Vital Statistics Records. Note: 2007 and 2008 data are not final and are subject to change.

Maternal, Infant, Child Health

Healthy People 2010 Objective (16-1a.): Reduce fetal deaths at 20 or more weeks of gestation.

Healthy People 2020 Objective MICH HP2020-1.1: Reduce fetal deaths at 20 or more weeks of gestation.

Fetal Deaths at 20 or More Weeks of Gestation, Washoe County and Nevada, 2000 - 2007.*



The rate of fetal mortality at 20 or more weeks of gestation, declined for Washoe County and Nevada since the years 2002—2003.

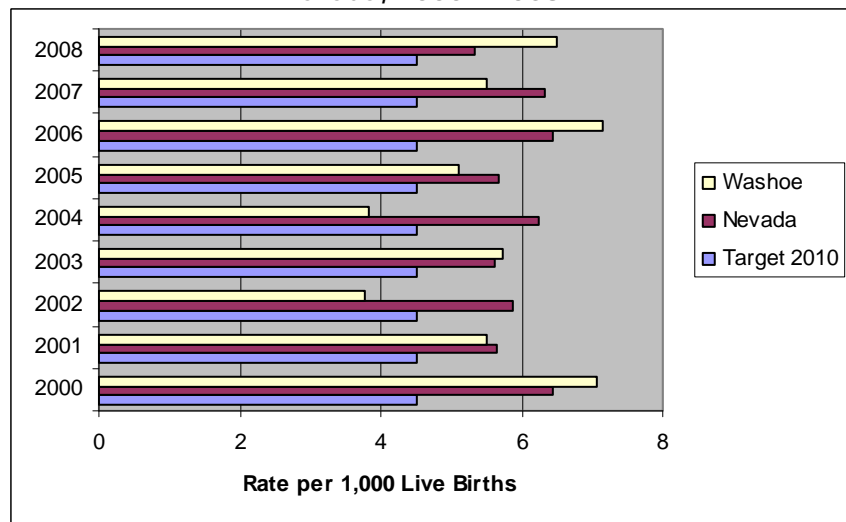
The Healthy People 2010 target rate of 4.1 per 1,000 live births was not achieved, but the trend is moving in the right direction.

Healthy People 2010 Objective (16-1c.): Reduce infant death rate (within 1 year of life).

Healthy People 2020 Objective MICH HP2020-1.3: Reduce infant death rate (within 1 year of life).

Infant Death Rate (Within 1 Year of Life), Washoe County and Nevada, 2000 - 2008.*

The infant mortality rate, within one year of life, fluctuated for Washoe County and Nevada from 2000-2008. Washoe County met the Healthy People 2010 target rate of 4.5 per 1,000 live births in the years 2002 and 2004.



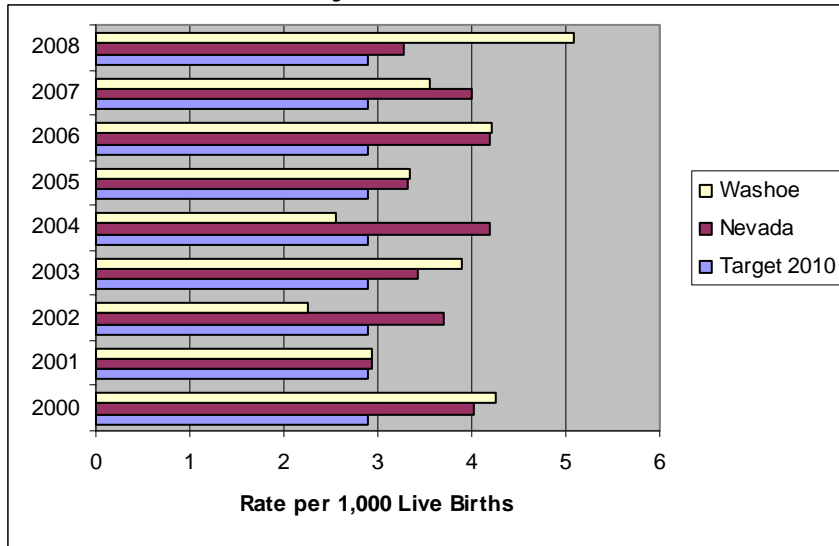
*The Nevada data are from Nevada Vital Statistics Records. The U.S. data are from the National Vital Statistics System - Mortality.

Note: 2008 data are not final and are subject to change.

Healthy People 2010 Objective (16-1d.): Reduce neonatal deaths (within the first 28 days of life).

Healthy People 2020 Objective MICH HP2020-1.4: Reduce neonatal deaths (within the first 28 days of life).

Neonatal Death Rate (Within the First 28 Days of Life), Washoe County and Nevada, 2000 - 2008.*



The neonatal mortality rate, within the first 28 days of life, fluctuated for the state and Washoe County during the years 2000—2008. Washoe County saw a marked increase in their rate in 2008.

Washoe County met the Healthy People 2010 target rate of 2.9 deaths per 1,000 live births in 2002 and 2004, however the most recent year of data was well above the target.

Healthy People 2010 Objective (16-1e.): Reduce postneonatal death rate (between 28 days and 1 year).

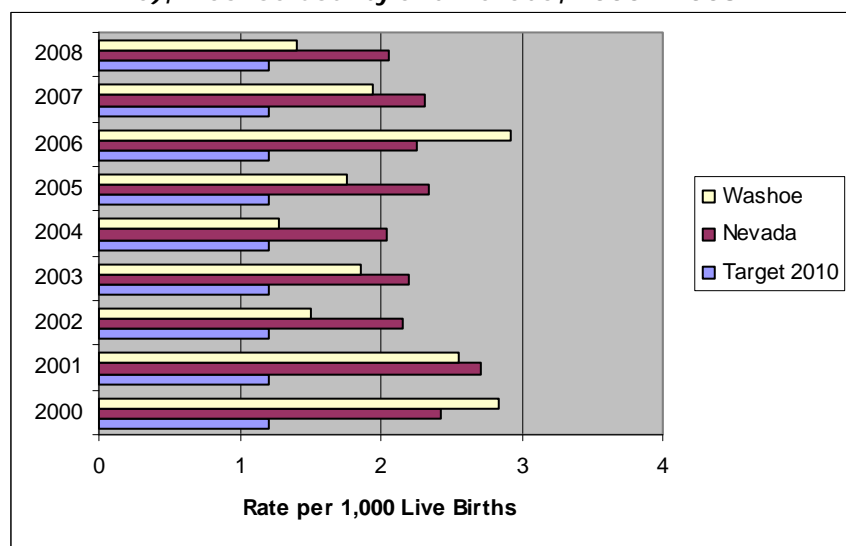
Healthy People 2020 Objective MICH HP2020-1.5: Reduce postneonatal deaths (between 28 days and 1 year).

The rate for post neonatal mortality, between 28 days and one year of life, has fluctuated for Washoe County and Nevada over the study years 2000-2008.

Neither the state, nor the county, have met the Healthy People 2010 goal rate of 1.2 per 1,000 live births.

The county's rate decreased to almost target level in the final year of data.

Postneonatal Death Rate (Between 28 Days and 1 Year of Life), Washoe County and Nevada, 2000 - 2008.*



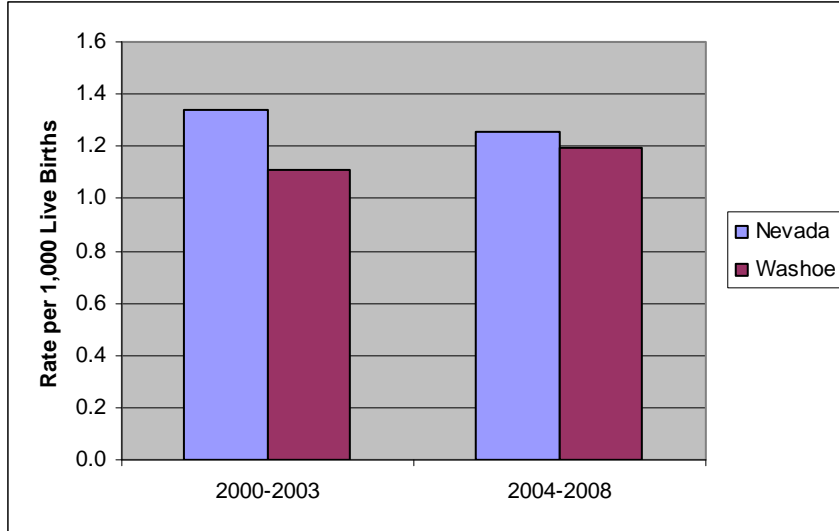
*The Nevada data are from Nevada Vital Statistics Records. The U.S. data are from the National Vital Statistics System - Mortality.

Note: 2008 data are not final and are subject to change.

Healthy People 2010 Objective (16-1f.): Reduce infant deaths due to birth defects.

Healthy People 2020 Objective MICH HP2020-1.6: Reduce infant death rates related to birth defects.

Aggregated Infant Death Rate From Birth Defects, Washoe County and Nevada, 2000 - 2003 and 2004 - 2008.*



Since 2000, the average infant mortality rate from birth defects declined for Nevada and climbed slightly for Washoe County.

On aggregate, the state rate was higher than the county rate.

The Healthy People objective rate of .7 deaths per 1,000 live births was not attained by either the state or the county.

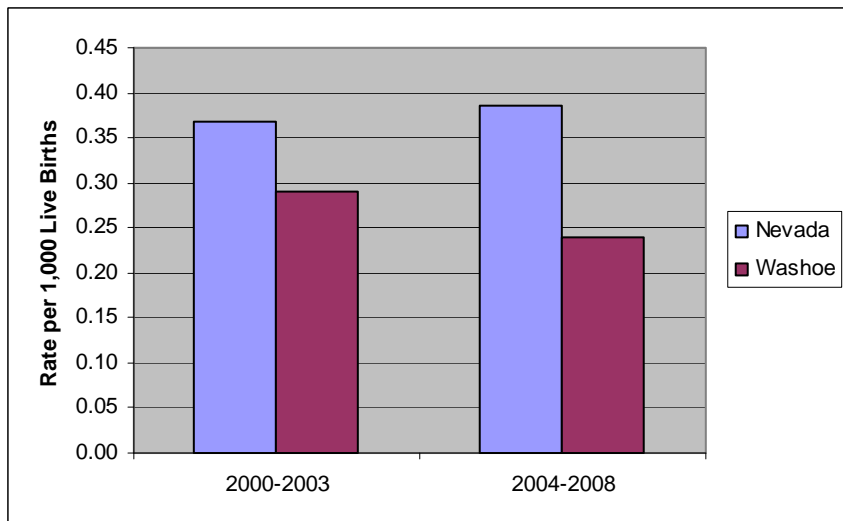
Healthy People 2010 Objective (16-1g.): Reduce infant rate from congenital heart defects.

Healthy People 2020 Objective MICH HP2020-1.7: Reduce infant rate from congenital heart defects.

Aggregated Infant Death Rate From Congenital Heart Defects, Washoe County and Nevada, 2000 - 2003 and 2004 - 2008.*

The infant mortality rate from congenital heart defects declined for Washoe County and increased for the state for the years studied.

On aggregate in 2004-2008, Washoe County was very close to the Healthy People target rate of .23 per 1,000 live births.



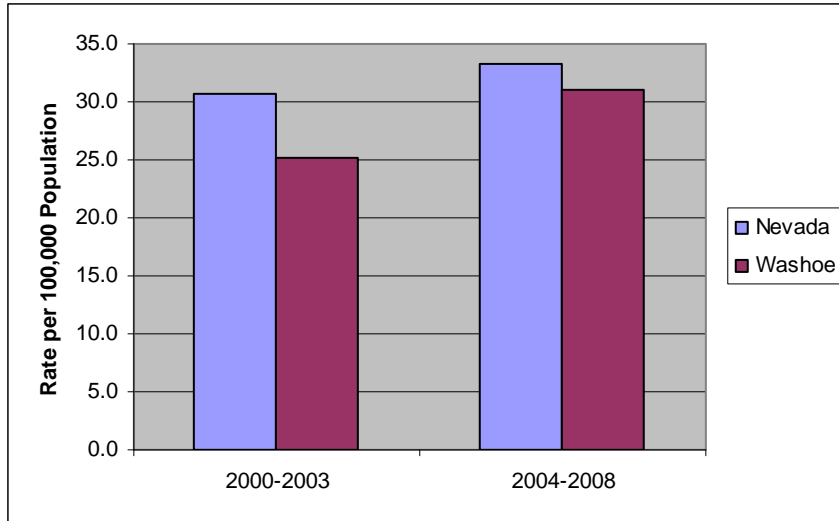
*The Nevada data are from Nevada Vital Statistics Records. The U.S. data are from the National Vital Statistics System - Mortality.

Note: 2008 data are not final and are subject to change.

Healthy People 2010 Objective (16-2a.): Reduce the rate of child deaths, aged 1 to 4 years.

Healthy People 2020 Objective MICH HP2020-3.1: Reduce the rate of child deaths, aged 1 to 4 years.

Aggregated Death Rate of Children Aged 1 to 4, Washoe County and Nevada, 2000 - 2003 and 2004 - 2008.*



During 2000—2008, the average mortality rate for children, aged under five years, increased for Washoe County and Nevada. The county rate was lower than the state rate on aggregate.

The Healthy People 2010 target rate of 20 deaths per 100,000 population was not met.

Healthy People 2010 Objective (16-2b.): Reduce the rate of child deaths, aged 5 to 9 years.

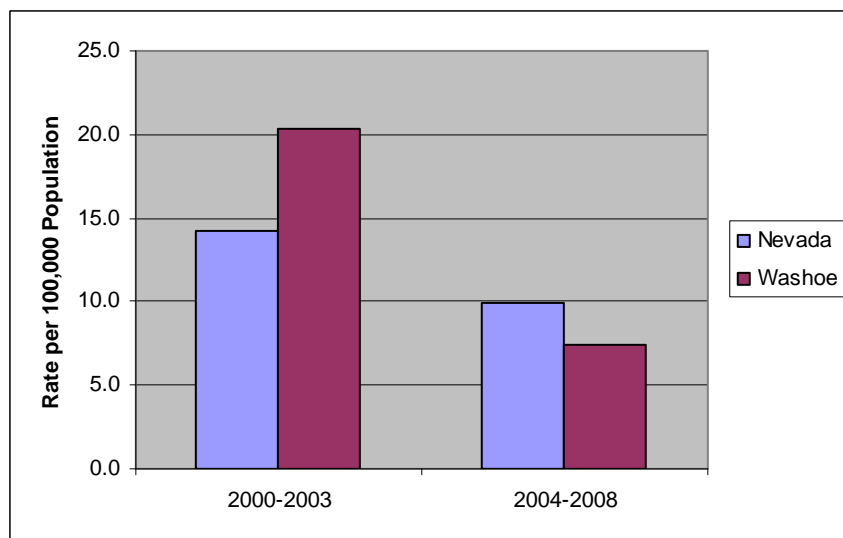
Healthy People 2020 Objective MICH HP2020-3.2: Reduce the rate of child deaths, aged 5 to 9 years.

Aggregated Death Rate of Children Aged 5 to 9, Washoe County and Nevada, 2000 - 2003 and 2004 - 2008.*

The mortality rate of children, aged 5 to 9 years, decreased for Nevada and Washoe County over the study years 2000-2008.

The county rate fell below the state rate on aggregate from 2004-2008.

Both met the Healthy People 2010 goal rate of 13 deaths per 100,000 population.

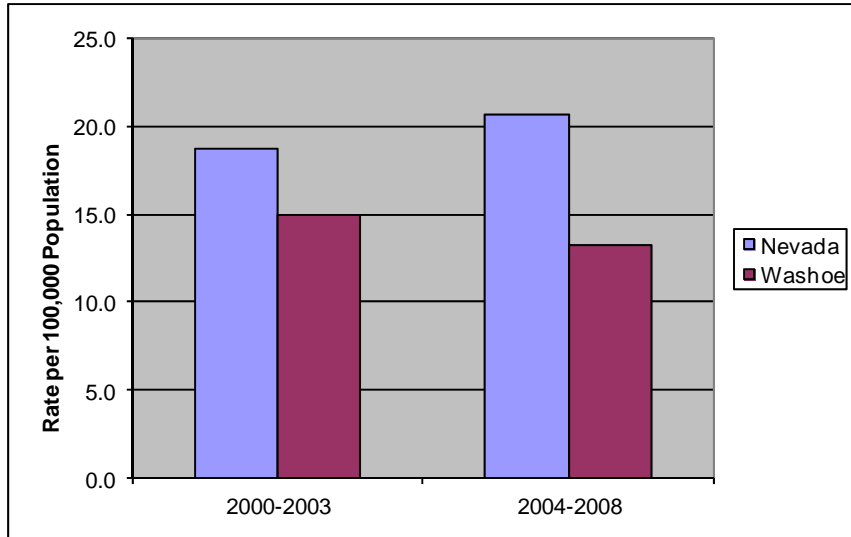


*The Nevada data are from Nevada Vital Statistics Records. The U.S. data are from the National Vital Statistics System - Mortality.
 Note: 2007 and 2008 data are not final and are subject to change.

Healthy People 2010 Objective (16-3a.): Reduce the rate of adolescent deaths, aged 10 to 14 years.

Healthy People 2020 Objective MICH HP2020-4.1: Reduce the rate of adolescent deaths, aged 10 to 14 years.

Aggregated Death Rate of Adolescents Aged 10 to 14, Washoe County and Nevada, 2000 - 2003 and 2004 - 2008.*



The average mortality rate for adolescents, aged 10 to 14 years, increased for Nevada, and decreased for Washoe County from 2000-2008.

On aggregate, the county met the Healthy People 2010 target of 16.5 deaths per 100,000 population for all study years.

Healthy People 2010 Objective (16-3b.): Reduce the rate of adolescent deaths, aged 15 to 19 years.

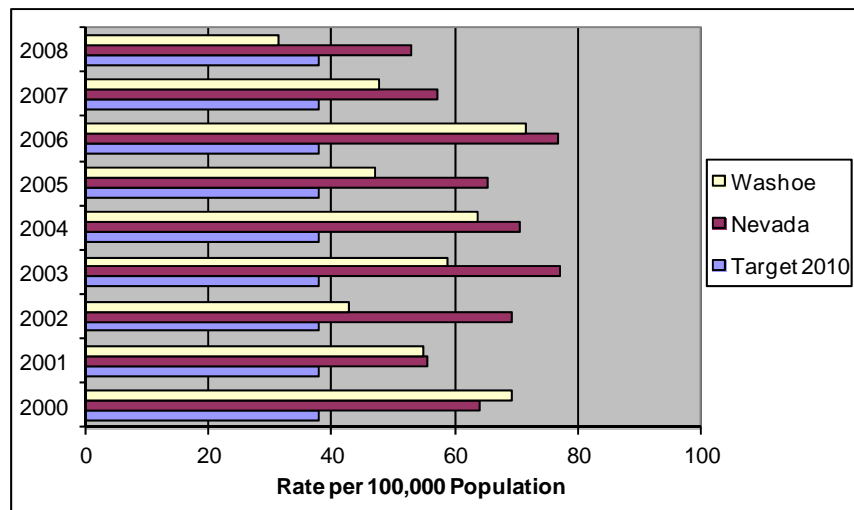
Healthy People 2020 Objective MICH HP2020-4.2: Reduce the rate of adolescent deaths, aged 15 to 19 years.

Death Rate of Adolescents Aged 15 to 19, Washoe County and Nevada, 2000 - 2008.*

The mortality rate of adolescents, aged 15 to 19, fluctuated for Washoe County and Nevada.

Both rates declined from 2006-2008.

The Healthy People 2010 goal rate of 38 deaths per 100,000 population was not attained by the state nor the county.



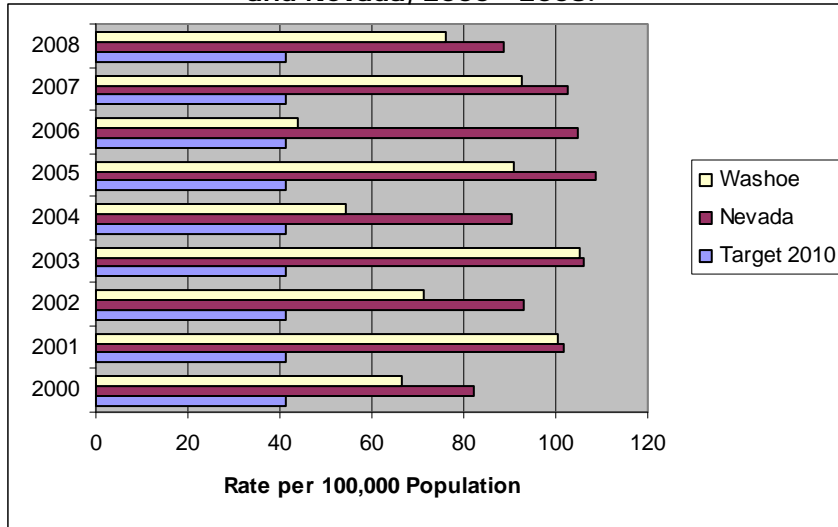
*The Nevada data are from Nevada Vital Statistics Records. The U.S. data are from the National Vital Statistics System - Mortality.

Note: 2007 and 2008 data are not final and are subject to change.

Healthy People 2010 Objective (16-3c.): Reduce the rate of young adult deaths, aged 20 to 24 years.

Healthy People 2020 Objective MICH HP2020-4.3: Reduce the rate of young adult deaths, aged 20 to 24 years.

Death Rate of Young Adults Aged 20 to 24, Washoe County and Nevada, 2000 - 2008.*



The mortality rate for young adults, aged 20—24, fluctuated during the years 2000 to 2008.

The objective rate of 41.5 deaths per 100,000 population set by Healthy People 2010 was not reached in any of the study years.

*The Nevada data are from Nevada Vital Statistics Records. The U.S. data are from the National Vital Statistics System - Mortality. 2007 and 2008 data are not final and are subject to change.

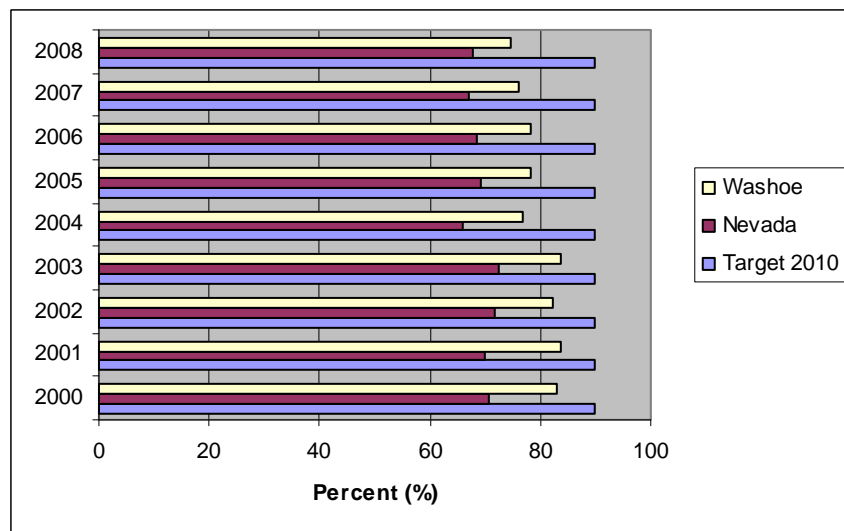
Healthy People 2010 Objective (16-6b.): Increase the proportion of pregnant women receiving early and adequate prenatal care.

Healthy People 2020 Objective MICH HP2020-10: Increase the proportion of women receiving early and adequate prenatal care.

Proportion of Pregnant Women Receiving Early and Adequate Prenatal Care, Washoe County and Nevada, 2000 - 2008.*

The proportion of pregnant women receiving prenatal care in the first trimester of pregnancy was steady during the study years 2000—2008.

The Healthy People 2010 goal of 90 percent was not met by Washoe County nor Nevada.

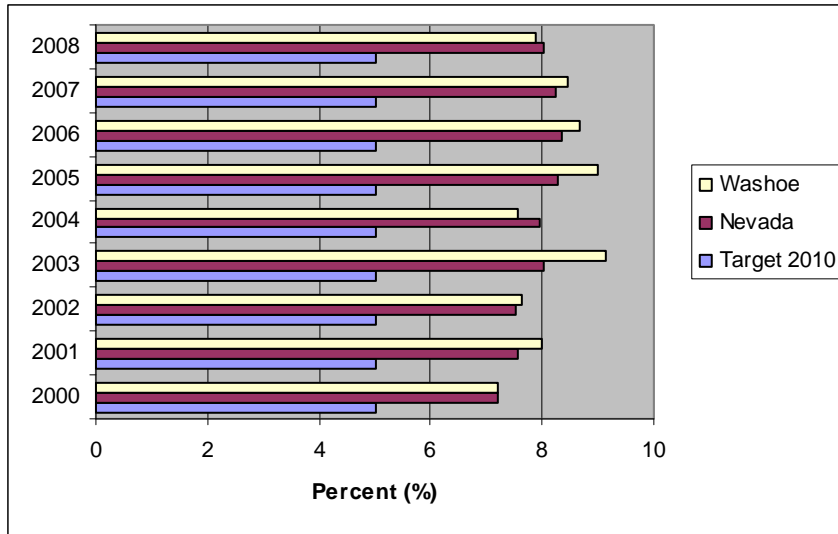


*The Nevada data are from Nevada Vital Statistics Records. The U.S. data are from the National Vital Statistics System - Natality. Note: 2008 data are not final and are subject to change.

Healthy People 2010 Objective (16-10a.): Reduce the proportion of low birth weight infants.

Healthy People 2020 Objective MICH HP2020-8.1: Reduce the proportion of low birth weight infants.

Proportion of Low Birth Weight Infants, Washoe County and Nevada, 2000 - 2008.*



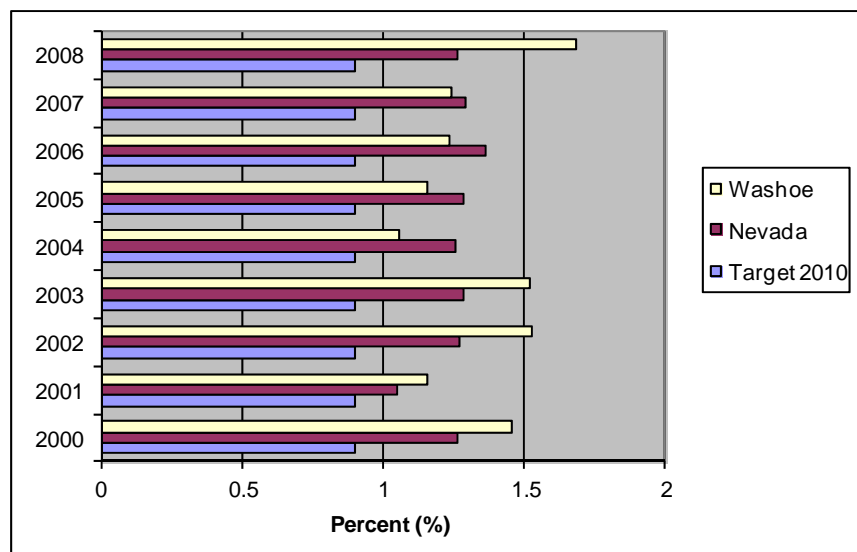
The percentage of low birth weight infants has fluctuated between 7-9 percent from 2000-2008 for Washoe County and the state.

The goal of 5 percent set by Healthy People 2010 was not achieved.

Healthy People 2010 Objective (16-10b.): Reduce the proportion of very low birth weight infants.

Healthy People 2020 Objective MICH HP2020-8.2: Reduce the proportion of very low birth weight infants.

Proportion of Very Low Birth Weight Infants, Washoe County and Nevada, 2000 - 2008.*



The proportion of very low birth weight infants fluctuated for the state and Washoe County from 2000-2008.

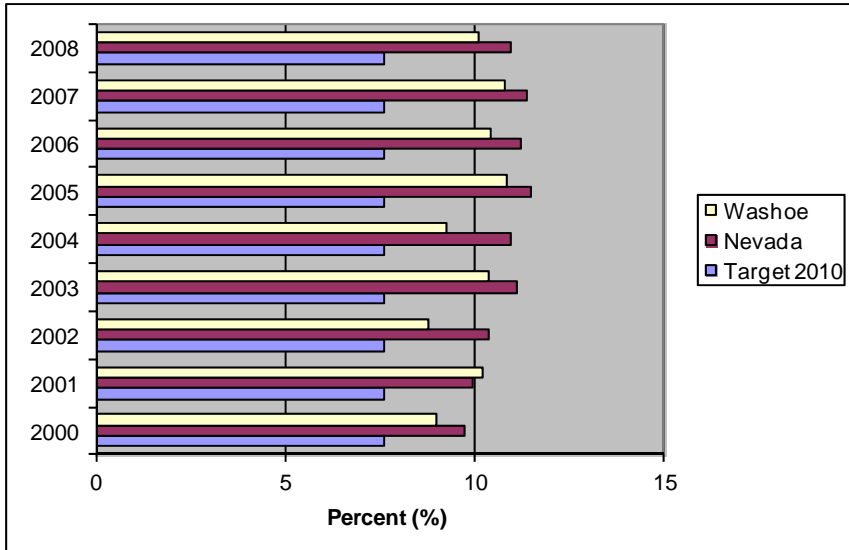
The Healthy People 2010 target of .9 percent was not met.

*The Nevada data are from Nevada Vital Statistics Records. The U.S. data are from the National Vital Statistics System - Natality. Note: 2008 data are not final and are subject to change.

Healthy People 2010 Objective (16-11a.): Reduce preterm birth, infants born prior to 37 completed weeks of gestation.

Healthy People 2020 Objective MICH HP2020-9.1: Reduce total preterm births.

Proportion of Pre-Term Births, Infants Born Prior to 37 Completed Weeks of Gestation, Washoe County and Nevada, 2000 - 2008.*



From 2000-2008, the percentage of pre-term births, infants born prior to 37 completed weeks of gestation, increased for both Washoe County and Nevada.

The goal of 7.6 percent set by Healthy People 2010 was not achieved by either the county or the state.

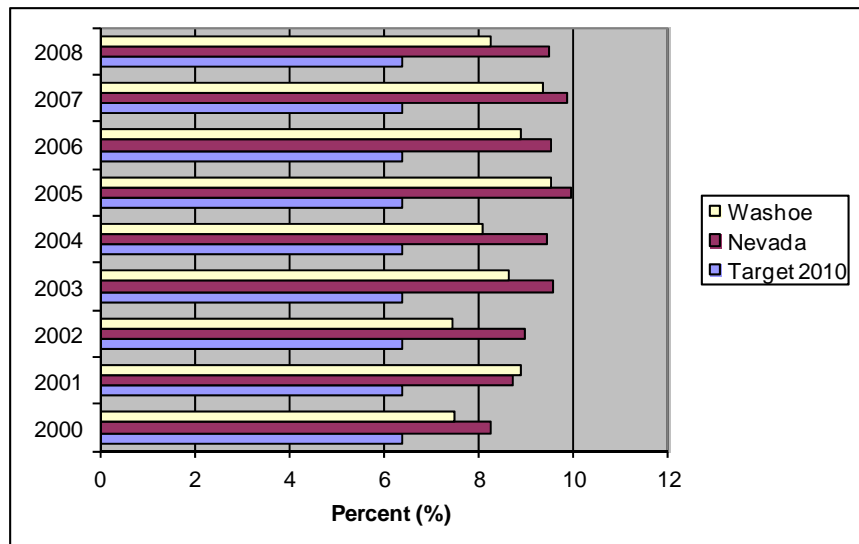
Healthy People 2010 Objective (16-11b.): Reduce the proportion of live births at 32 to 36 completed weeks of gestation.

Healthy People 2020 Objective MICH HP2020-9.2: Reduce the proportion of live births at 34 to 36 completed weeks of gestation.

Proportion of Live Births at 32 to 36 Completed Weeks of Gestation, Washoe County and Nevada, 2000 - 2008.*

The proportion of live births at 32 to 36 completed weeks of gestation fluctuated for Washoe County and Nevada after an initial increase during 2000-2005.

The Healthy People 2010 target of 6.4 percent was not met.

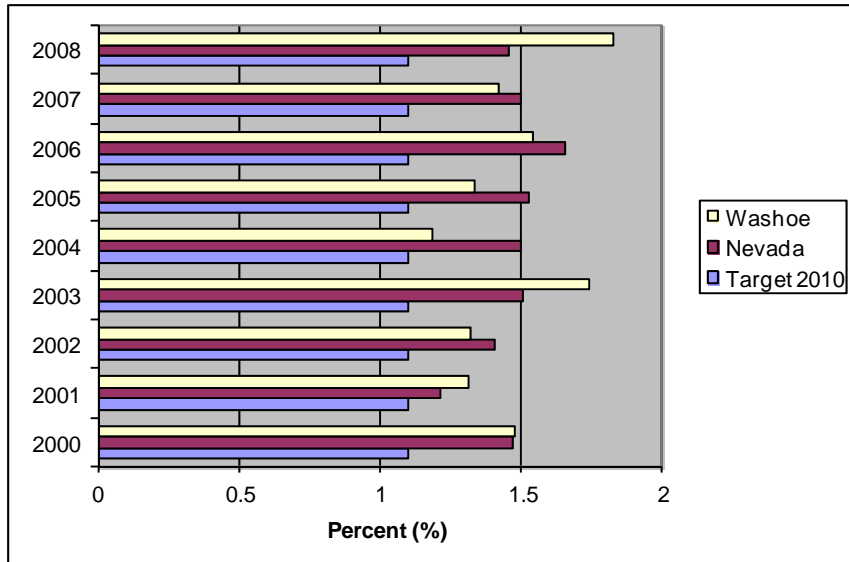


*The Nevada data are from Nevada Vital Statistics Records. The U.S. data are from the National Vital Statistics System - Natality. Note: 2008 data are not final and are subject to change.

Healthy People 2010 Objective (16-11c.): Reduce the proportion of live births at less than 32 completed weeks of gestation.

Healthy People 2020 Objective MICH HP2020-9.4: Reduce the proportion of very preterm or live births at less than 32 completed weeks of gestation.

Proportion of Live Births at Less Than 32 Completed Weeks of



The proportion of live births at less than 32 completed weeks of gestation fluctuated for Washoe County and Nevada over the study years 2000-2008.

The objective of 1.1 percent set by Healthy People 2010 was not achieved.

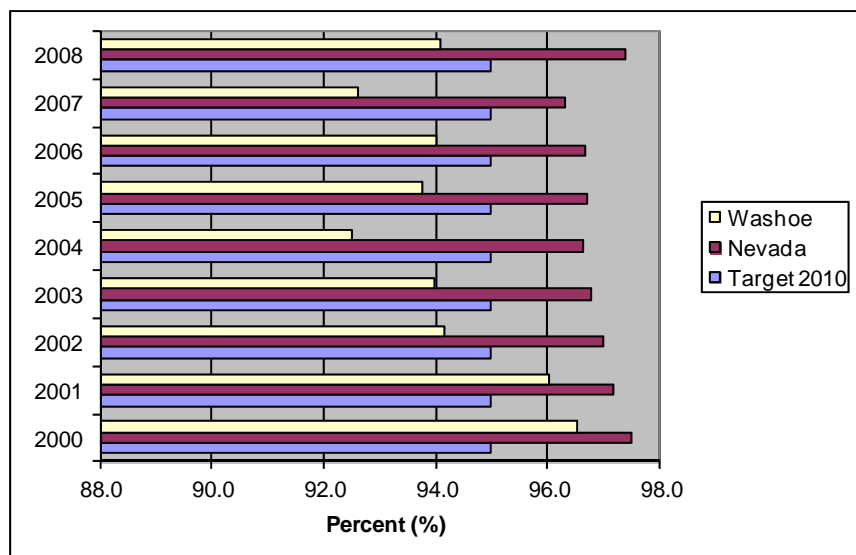
Healthy People 2010 Objective (16-17a.): Increase the proportion of pregnant women abstaining from alcohol.

Healthy People 2020 Objective MICH HP2020-11.1: Increase abstinence from alcohol among pregnant women.

Proportion of Pregnant Women, Aged 15 to 44, Abstaining from Alcohol, Washoe County and Nevada, 2000 - 2008.*

The percentage of pregnant women abstaining from alcohol during the years 2000—2008 fluctuated for Washoe County, while the Nevada rate declined until 2008.

Washoe County met the Healthy People 2010 target of 95 percent over the years 2002 to 2008.

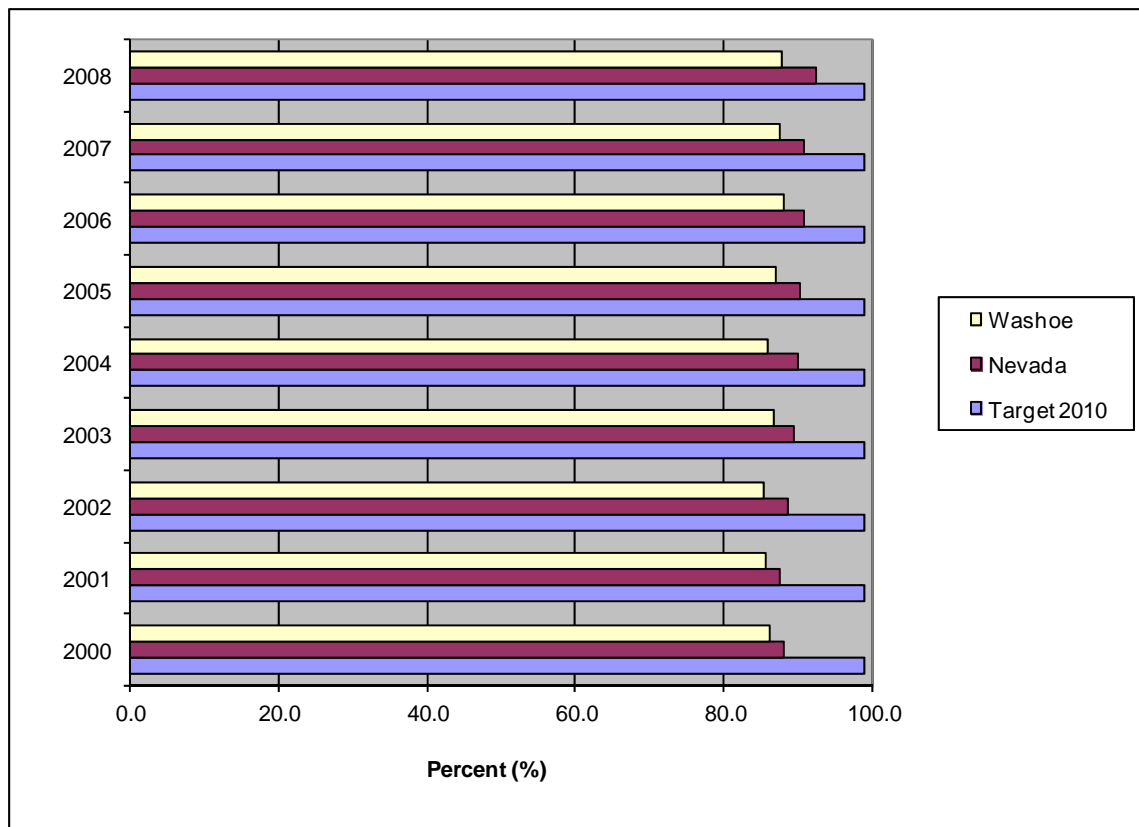


*The Nevada data are from Nevada Vital Statistics Records. The U.S. data are from the National Vital Statistics System - Natality. Note: 2008 data are not final and are subject to change.

Healthy People 2010 Objective (16-17c.): Increase the proportion of pregnant women, aged 15-44 years, abstaining from cigarette smoking.

Healthy People 2020 Objective MICH HP2020-11.3: Increase abstinence from cigarettes among pregnant women.

Proportion of Pregnant Women Abstaining from Tobacco, Washoe County and Nevada, 2000 - 2008.*



The percentage of pregnant women abstaining from tobacco increased for Nevada and Washoe County. The county rate was lower than the state rate. Neither the state, nor the county, met the Healthy People 2010 goal of 99 percent.

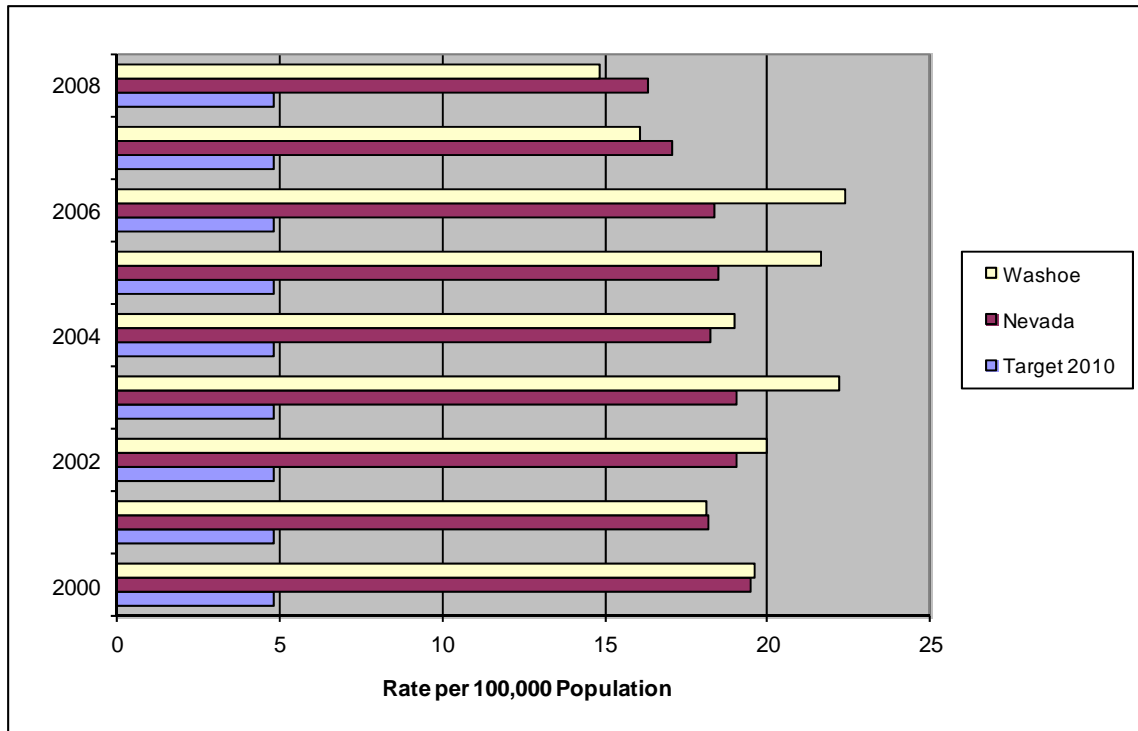
*The Nevada data are from Nevada Vital Statistics Records. The U.S. data are from the National Vital Statistics System - Natality. Note: 2008 data are not final and are subject to change.

Mental Health and Mental Disorders

Healthy People 2010 Objective (18-1.): Reduce the suicide rate.

Healthy People 2020 Objective MHMD HP2020-1: Reduce the suicide rate.

Age-Adjusted Suicide Death Rate, Washoe County and Nevada, 2000 - 2008.*



During the years 2000 to 2008, the suicide mortality rate fluctuated for Washoe County and Nevada. The county and state rates declined from 2006-2008. The objective rate of 4.8 suicide deaths per 100,000 population as set by Healthy People 2010 was not achieved.

Both Nevada and Washoe County suicide rates were three times higher than the Healthy People 2010 target in the last study year of 2008.

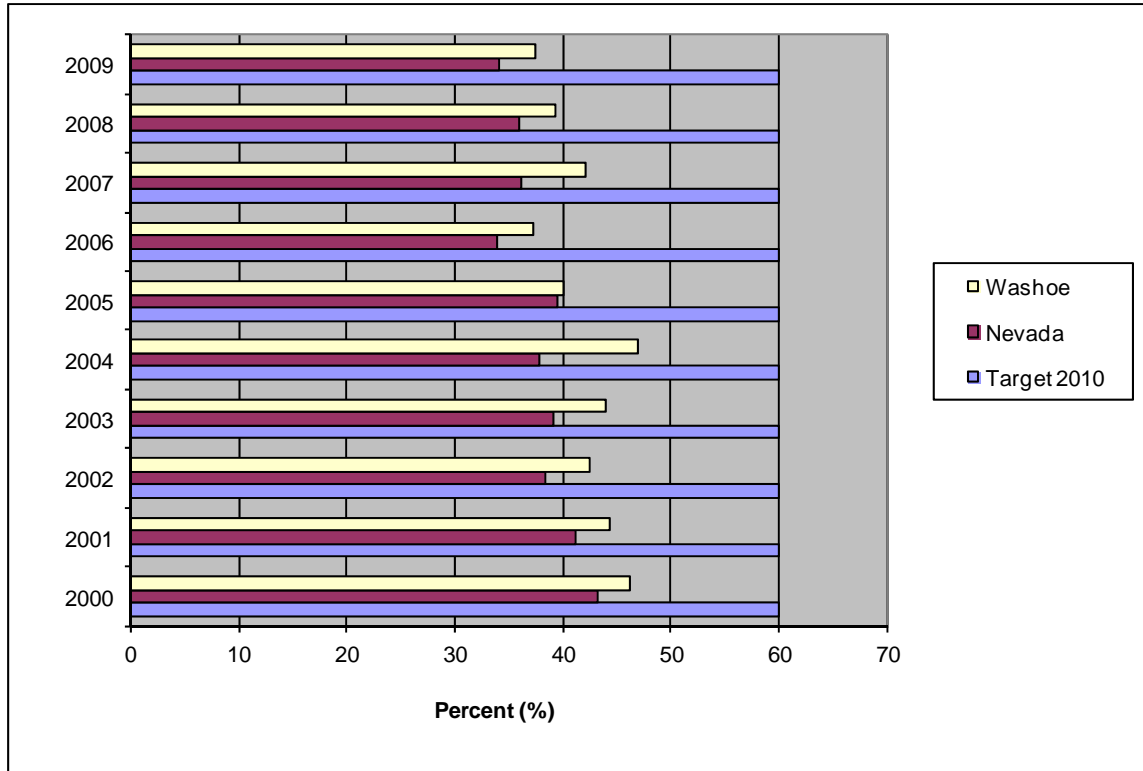
*These rates are age-adjusted to the 2000 U.S. standard population. The Nevada data is from Nevada Vital Statistics Records (NVSR), and the U.S. data is from the National Vital Statistics System (NVSS)– Mortality. Note: 2007 and 2008 data are not final and are subject to change.

Nutrition and Weight Status

Healthy People 2010 Objective (19-1): Increase the proportion of adults who are at a healthy weight.

Healthy People 2010 Objective NWS HP2020-8: Increase the proportion of adults who are at a healthy weight.

Proportion of Adults Who Are At a Healthy Weight, Washoe County and Nevada, BRFSS Data, 2000 - 2009. *



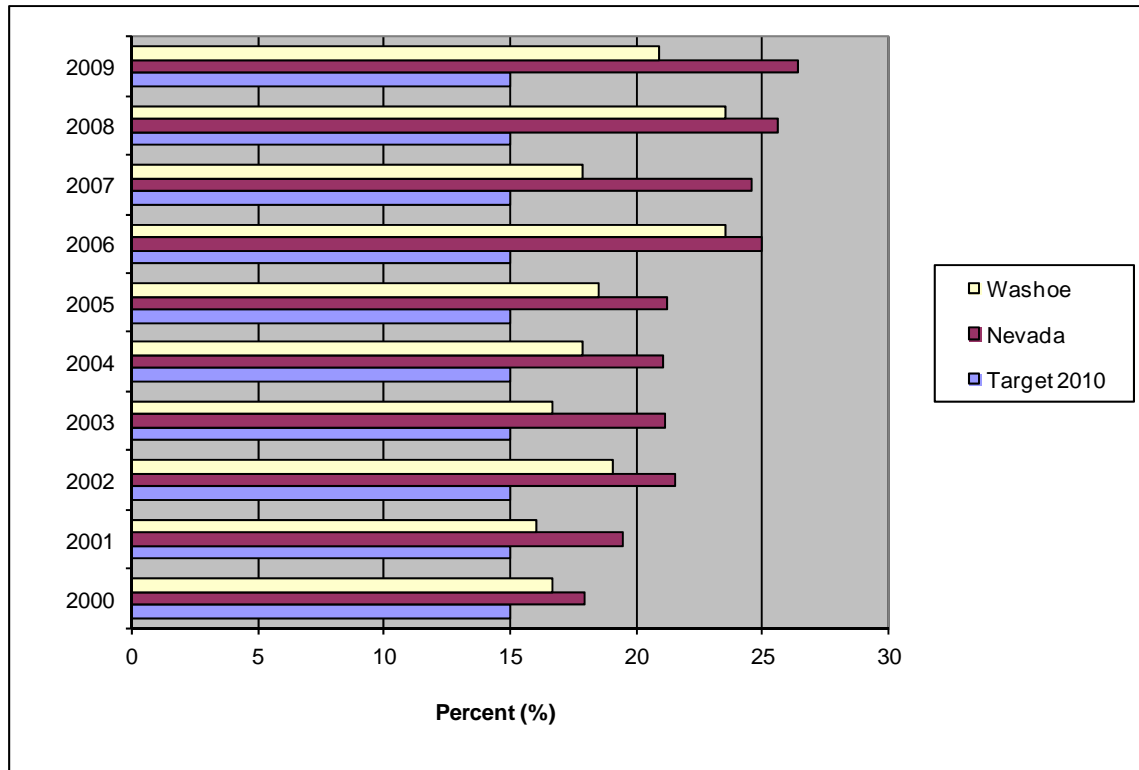
Washoe County reported a consistently higher percentage of adults who are at a healthy weight than the state. The Healthy People 2010 goal of 60 percent was not reached by Nevada nor the county. However, this percentage decreased from 2000-2009.

*These percentages are weighted to survey population characteristics. Not all counties were included in the survey results. Note: Body weight estimates from self-reported heights and weights tend to be lower than those from measured height and weight.

Healthy People 2010 Objective (19-2): Reduce the proportion of adults who are obese.

Healthy People 2020 Objective NWS HP2020-9: Reduce the proportion of adults who are obese.

Proportion of Adults Who Are Obese, Washoe County and Nevada, BRFSS Data, 2000 - 2009* .



The percentage of adults who are obese was consistently higher for Nevada than Washoe County from 2000-2007. Neither the state, nor the county, met the Healthy People 2010 objective of 15 percent.

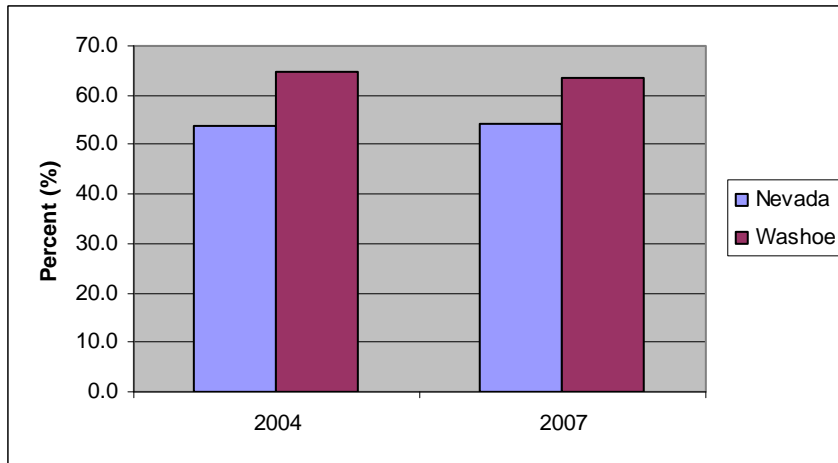
*These percentages are weighted to survey population characteristics. Not all counties were included in the survey results. Note: Body weight estimates from self-reported heights and weights tend to be lower than those from measured height and weight.

Oral Health

Healthy People 2010 Objective (21-1a.): Reduce the proportion of children, aged 3– to 5 years, with dental caries experience in primary and permanent teeth.

Healthy People 2020 Objective OH HP2020-1.1: Reduce the proportion of young children with dental caries experience in their primary teeth (aged 3 to 5 years).

Proportion of Children Aged 3 to 5 Years With Dental Caries Experience in Primary and Permanent Teeth, Washoe County and Nevada, 2004 and 2007.*



The percentage of children, aged two to five years, with dental caries experience in primary and permanent teeth was higher for Washoe County than for Nevada in the reported years 2004 and 2007.

Washoe County does not have fluoridated water, Clark County does. Both counties are well above the Healthy People 2010 target of 11 percent.

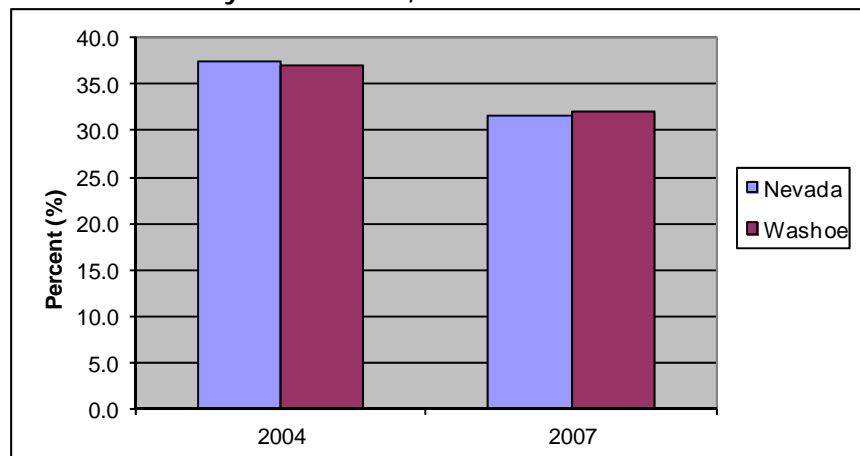
Healthy People 2010 Objective (21-2a.): Reduce the proportion of children aged 3 to 5 years with untreated dental decay.

Healthy People 2020 Objective OH HP2020-2.1: Reduce the proportion of young children with untreated dental decay in primary and permanent teeth (aged 3 to 5 years).

The percentage of children, aged two to five years, with untreated dental decay in primary and permanent teeth decreased by more than 5 percent for both the county and the state from 2004 to 2007.

However, both are well above the Healthy People 2010 goal of 9 percent.

Proportion of Children Aged 3 to 5 Years With Untreated Dental Decay in Primary and Permanent Teeth, Washoe County and Nevada, 2004 and 2007.*



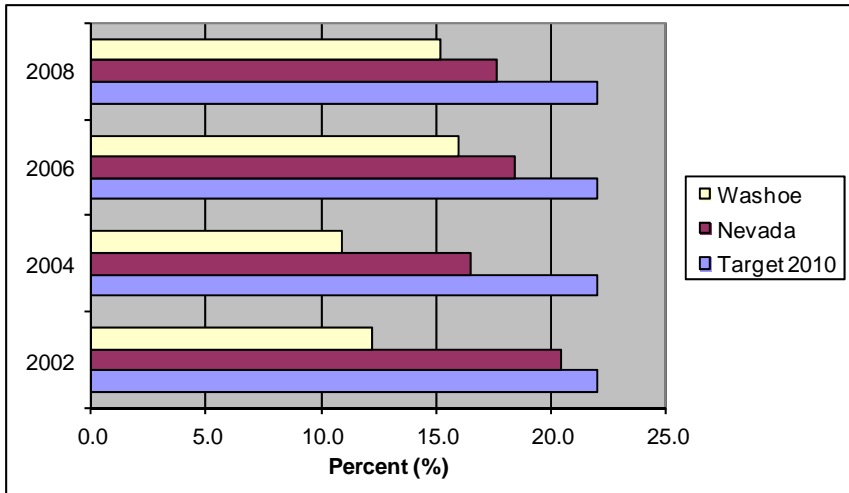
*The Nevada data are from the Head Start Oral Health Survey, Bureau of Child, Family and Community Wellness, Nevada State Health Division (NSHD).

Note: These results are not weighted.

Healthy People 2010 Objective (21-4.): Reduce the proportion of older adults, aged 65 years and older, reporting having all their natural teeth extracted.

Healthy People 2020 Objective OH HP2020-4.2: Reduce the proportion of older adults who have lost all their natural teeth (aged 65 to 74 years).

Proportion of Older Adults Aged 65 Years and Older Reporting Having All of Their Natural Teeth Extracted, Washoe County and Nevada, BRFSS Data, 2002, 2004, 2006, 2008.*



The percentage of older adults, aged 65 years and older, reporting having all of their natural teeth extracted, fluctuated for the state and increased for Washoe County from 2002-2008.

The Healthy People 2010 goal of 22 percent was surpassed by both the county and the state.

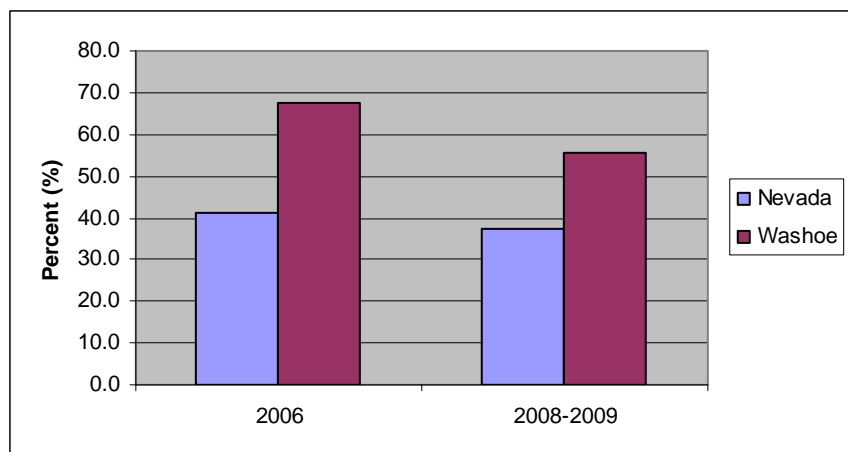
*These percentages are weighted to survey population characteristics. Not all counties were included in the survey results.

Healthy People 2010 Objective (21-8a.): Increase the proportion of children aged 8 years, who have received dental sealants on their molar teeth.

Healthy People 2020 Objective OH HP2020-12.2: Increase the proportion of children who have received dental sealants on their molar teeth (aged 6 to 9 years).

The percentage of third graders who have received dental sealants on their molar teeth was consistently higher for Washoe County than for Nevada during the study years 2006, 2008-2009. Washoe County did better than the Healthy People 2010 target of 50 percent.

Proportion of Third Graders Who Have Received Dental Sealants on Their Molar Teeth, Washoe County and Nevada, 2006 and 2008-2009.*



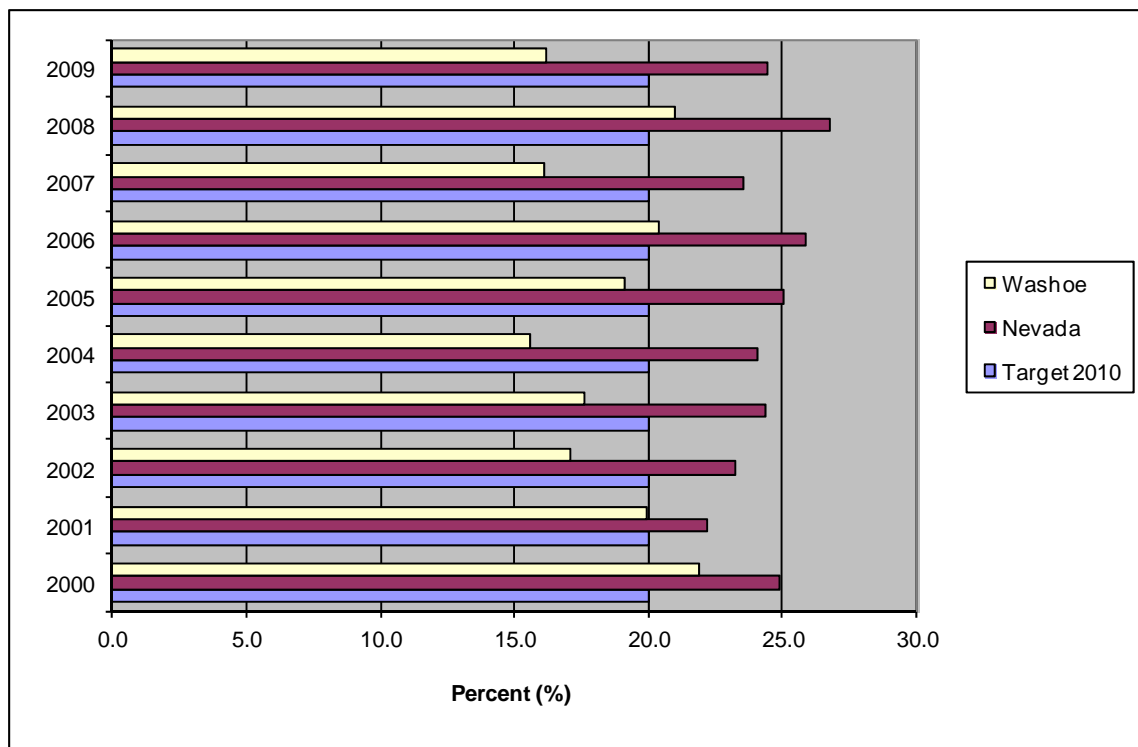
*The Nevada data are from the Oral Health Survey, Bureau of Child, Family and Community Wellness, Nevada State Health Division (NSHD). Note: These results are not weighted.

Physical Activity and Fitness

Healthy People 2010 Objective (22-1.): Reduce the proportion of adults who engage in no leisure-time physical activity.

Healthy People 2020 Objective PA HP2020-1: Reduce the proportion of adults who engage in no leisure-time physical activity.

Proportion of Adults Who Engage in No Leisure Time Physical Activity, Washoe County and Nevada, BRFSS Data, 2000 - 2009.*



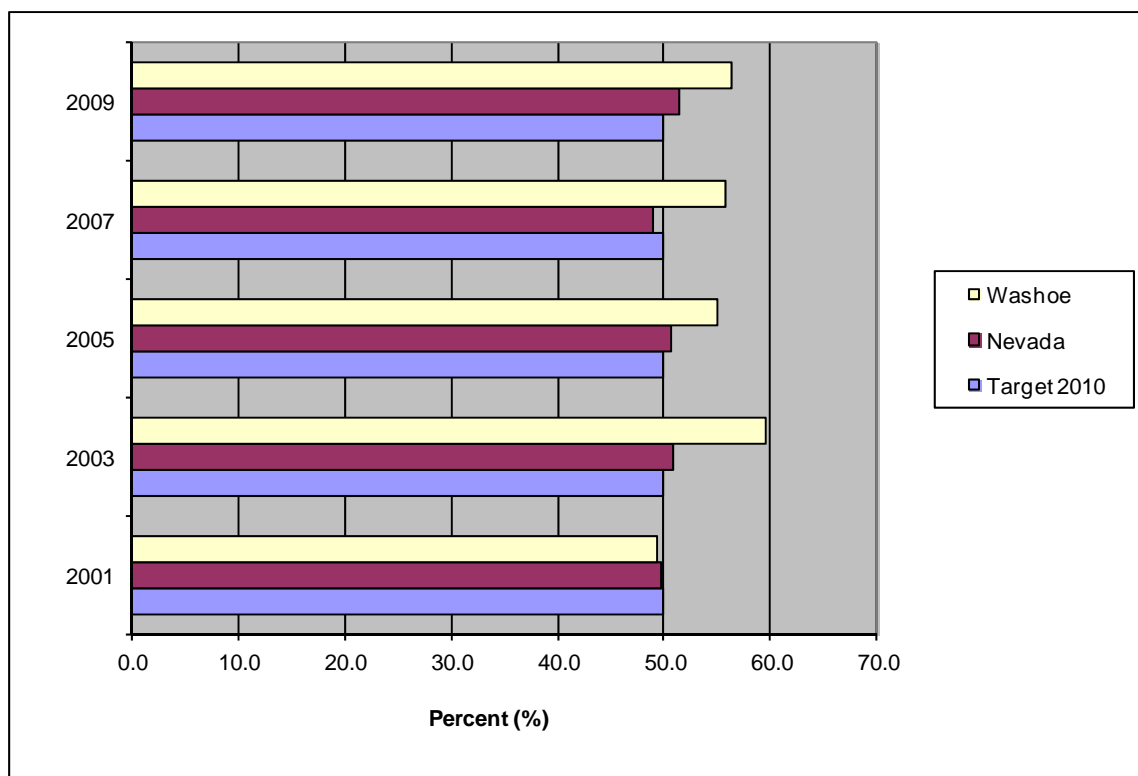
For most of the study years Washoe County met and exceeded the Healthy People 2010 target of 20 percent of adults engaging in no leisure time physical activity. For each of these years Washoe County did better than the state overall.

*These percentages are weighted to survey population characteristics. Not all counties were included in the survey results.

Healthy People 2010 Objective (22-2.): Increase the proportion of adults who engage regularly, preferably daily, in moderate physical activity for at least 30 minutes per day.

Healthy People 2020 Objective PA HP2020-2.1: Increase the proportion of adults who engage in aerobic physical activity of at least moderate intensity for at least 150 minutes/week or 75 minutes/week of vigorous intensity or an equivalent combination.

Proportion of Adults Who Engage in Aerobic Physical Activity of At Least Moderate Intensity for At Least 150 Minutes per Week or of Vigorous Intensity for At Least 75 Minutes per Week or an Equivalent Combination, Washoe County and Nevada, BRFSS Data, 2001, 2003, 2005, 2007, 2009.*



The percentage of adults who engage in aerobic physical activity of at least moderate intensity for at least 150 minutes per week or of vigorous intensity for at least 75 minutes per week or an equivalent combination, was consistently higher for Washoe County than for Nevada for the study years 2003, 2005, 2007, and 2009.

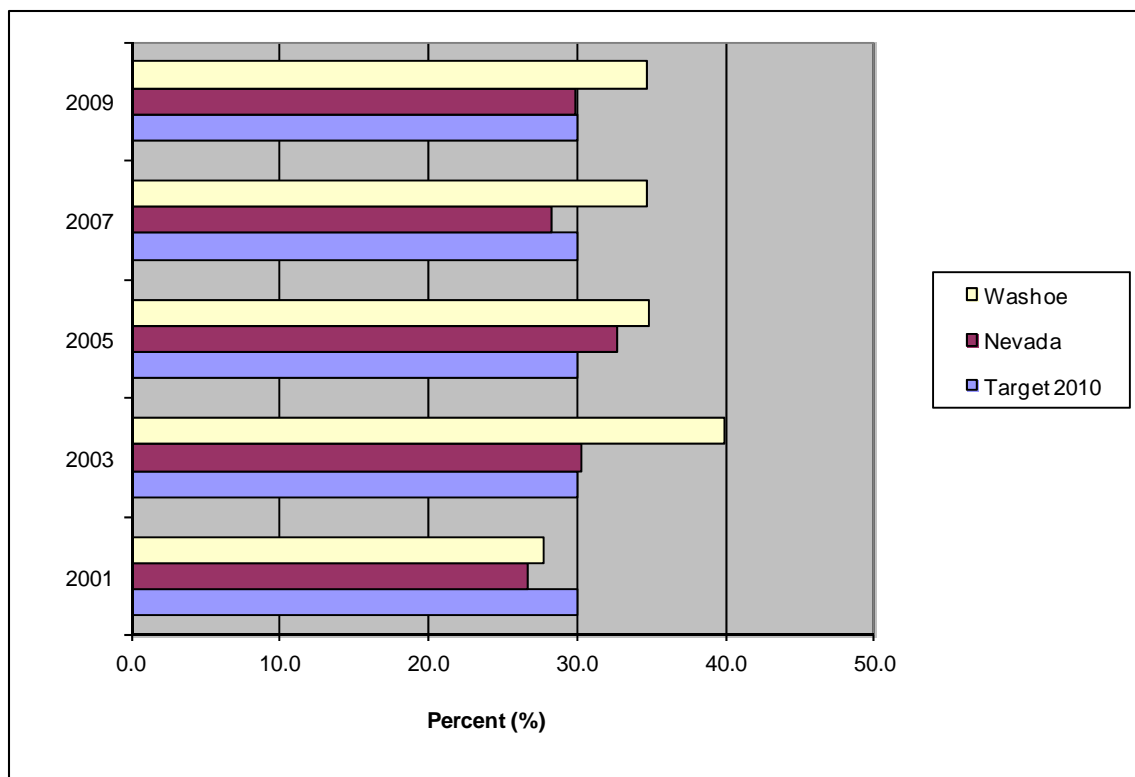
The Healthy People 2010 goal of 50 percent was attained by the state in the years 2001—2005 and 2009. Washoe County met the objective during the years 2003—2009.

*These percentages are weighted to survey population characteristics. Not all counties were included in the survey results.

Healthy People 2010 Objective (22-3.): Increase the proportion of adults who engage in vigorous physical activity promoting the development and maintenance of cardio-respiratory fitness for 20 or more minutes per day 3 or more days per week.

Healthy People 2020 Objective PA HP2020-2.2: Increase the proportion of adults who engage in aerobic physical activity of at least moderate intensity for more than 300 minutes/week or more than 150 minutes/week of vigorous intensity or an equivalent combination.

Proportion of Adults Who Engage in Aerobic Physical Activity of At Least Moderate Intensity for More Than 300 Minutes per Week or More Than 150 Minutes per Week of Vigorous Intensity or An Equivalent Combination, Washoe County and Nevada, BRFSS Data, 2001, 2003, 2005, 2007, 2009.*



The percentage of adults who engage in aerobic physical activity of at least moderate intensity for more than 300 minutes per week or of vigorous intensity for more than 150 minutes per week or an equivalent combination, was consistently higher for Washoe County than the rest of the state according to Behavioral Risk Factor Surveillance System data.

The Healthy People 2010 target was met by Nevada in the years 2003, 2005, and 2009. Washoe County met the goal of 30 percent in the years 2003– 2009.

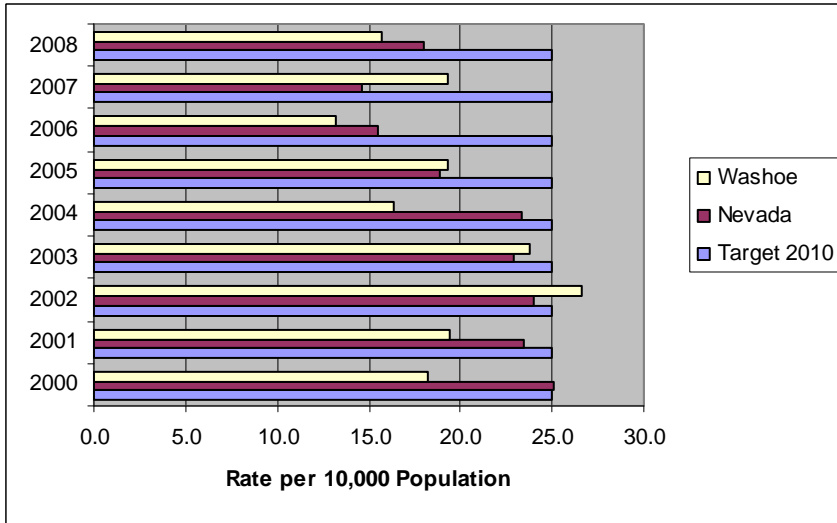
*These percentages are weighted to survey population characteristics. Not all counties were included in the survey results.

Respiratory Diseases

Healthy People 2010 Objective (24-2a.): Reduce hospitalizations for asthma in children under age 5 years.

Healthy People 2020 Objective RD HP2020-2.1: Reduce hospitalizations for asthma in children under age 5 years.

Hospitalizations for Asthma in Children Under Age 5 Years, Washoe County and Nevada, 2000 - 2008.*



Asthma hospitalizations for children, under the age of five years, fluctuated for Washoe County and Nevada from 2000-2003.

Except for an increase at the county level in the year 2002, the state and county met the Healthy People 2010 target of 25 per 10,000 population each study year.

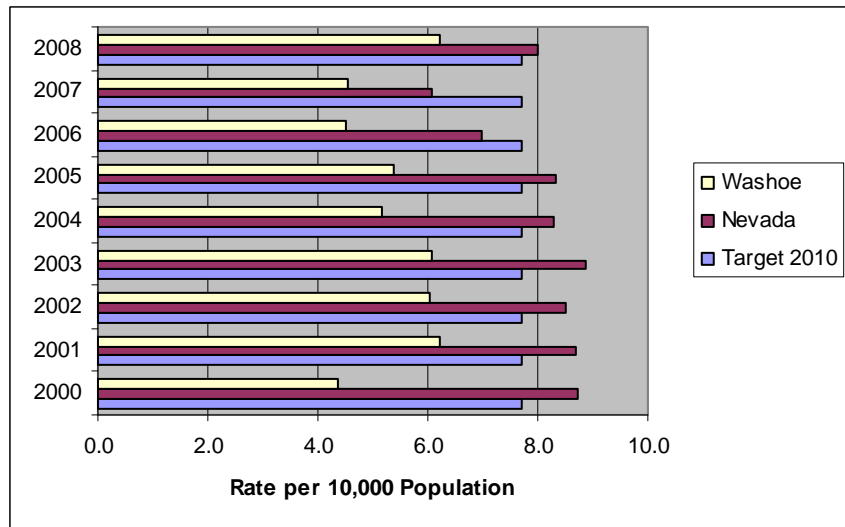
Healthy People 2010 Objective (24-2b.): Reduce hospitalizations for asthma in children and adults, aged 5 to 64 years.

Healthy People 2020 Objective RD HP2020-2.2: Reduce hospitalizations for asthma in children and adults, aged 5 to 64 years.

Hospitalizations for Asthma in Children and Adults Aged 5 to 64 Years, Washoe County and Nevada, 2000 - 2008.*

The rate of hospitalizations for asthma in children and adults, aged 5—64 years, fluctuated for Nevada and Washoe County.

Nevada met the Healthy People objective rate of 7.7 per 10,000 population in the years 2006 and 2007, while Washoe County met the goal throughout 2000—2008.

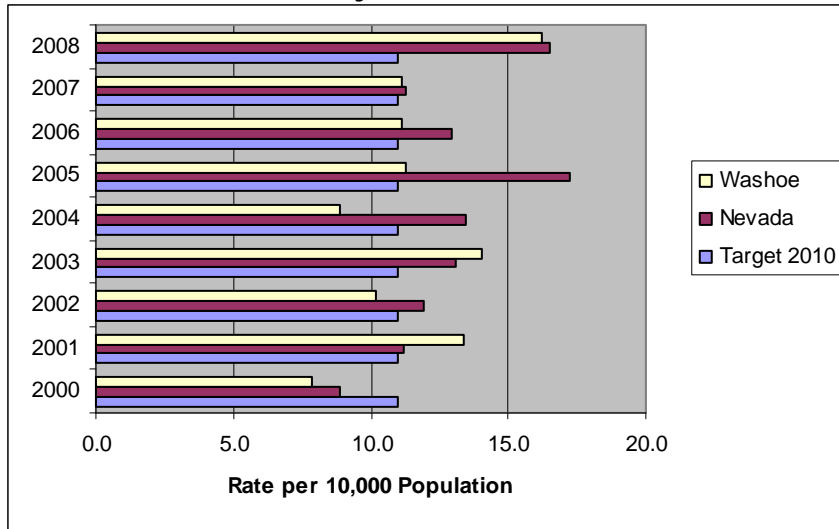


*The Nevada data are from Nevada Inpatient Hospital Discharge Database (NIHDD).

Healthy People 2010 Objective (24-2c.): Reduce hospitalizations for asthma in adults, aged 65 years and older.

Healthy People 2020 Objective RD HP2020-2.3: Reduce hospitalizations for asthma in adults, aged 65 years and older.

Hospitalizations for Asthma in Adults Aged 65 Years and Older, Washoe County and Nevada, 2000 - 2008.*



Asthma hospitalization rates for adults, aged 65 years and older, fluctuated for Nevada and Washoe County during the years 2000—2008.

The target rate of 11 per 10,000 population set by Healthy People 2010 was met by Washoe County in 2000, 2002, and 2004. Nevada met the goal in 2000.

*The Nevada data are from Nevada Inpatient Hospital Discharge Database (NIHDD).

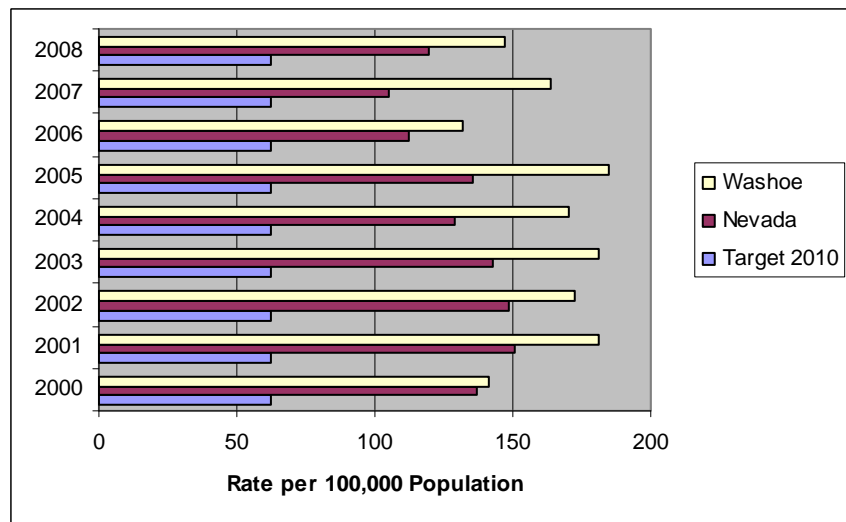
Healthy People 2010 Objective (24-10.): Reduce deaths from chronic obstructive pulmonary disease among adults.

Healthy People 2020 Objective RD HP2020-10: Reduce deaths from chronic obstructive pulmonary disease among adults.

Age-Adjusted Chronic Obstructive Pulmonary Disease Deaths, Washoe County and Nevada, 2000 - 2008.*

The mortality rate for chronic obstructive pulmonary disease (COPD) fluctuated from 2000-2008 for Washoe County and Nevada.

The Healthy People 2010 objective rate of 62.3 per 100,000 population was not met.



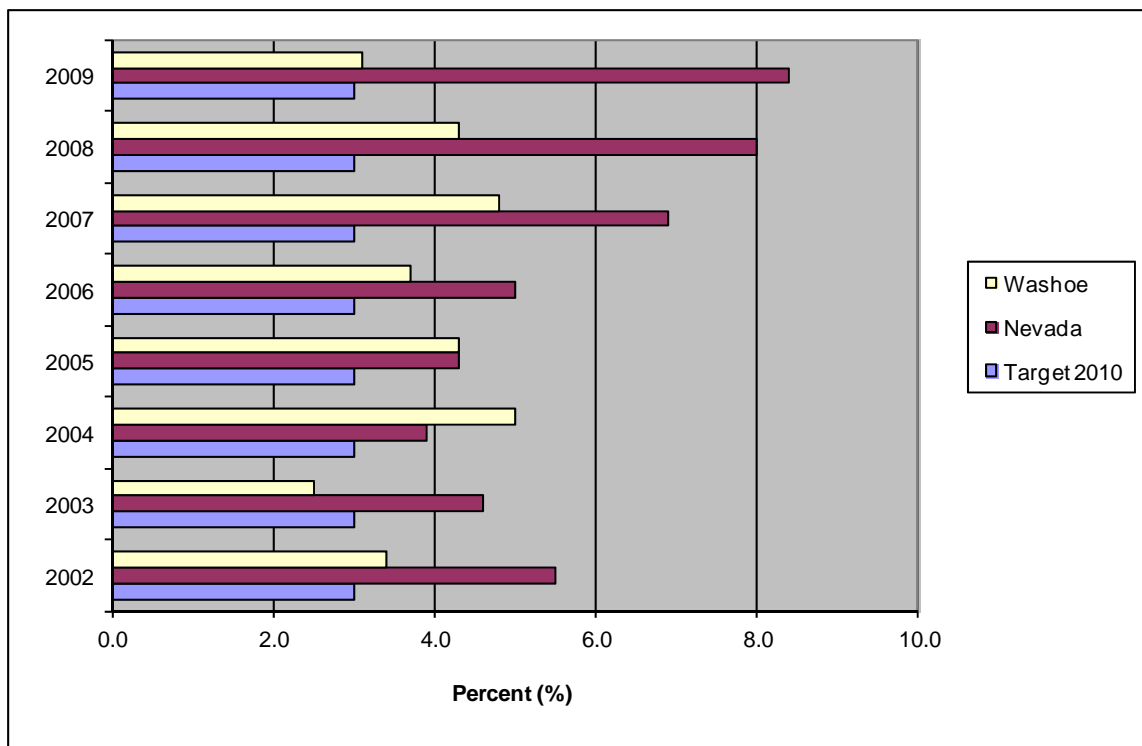
*These rates are age-adjusted to the 2000 U.S. standard population. The Nevada data are from Nevada Vital Statistics Records. Note: 2007 and 2008 data are not final and are subject to change.

Sexually Transmitted Diseases

Healthy People 2010 Objective (25-1a.): Reduce the proportion of females with Chlamydia trachomatis infections, aged 15-24 years, attending family planning clinics.

Healthy People 2020 Objective STD HP2020-1.1: Reduce the proportion of females with Chlamydia trachomatis infections, aged 15-24 years, attending family planning clinics.

Proportion of Females with Chlamydia Trachomatis Infections Attending Family Planning Clinics, Washoe County and Nevada, 2000 - 2009.*



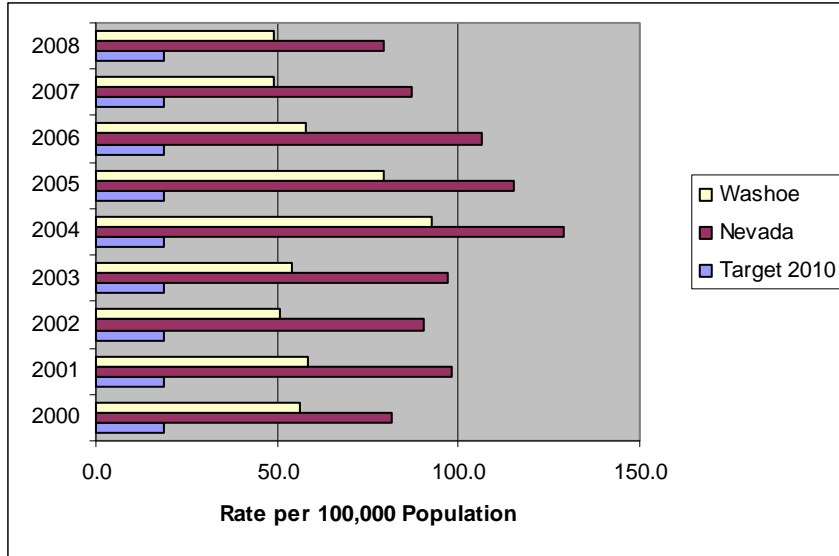
The percentage of females with Chlamydia trachomatis infections attending family planning clinics increased for the state and fluctuated for Washoe County during the years 2002—2009. The county rate was consistently lower than the Nevada rate. The Healthy People 2010 objective of 3 percent was met by Washoe County in 2003.

*Nevada data are provided by the Centers for Disease Control and Prevention (CDC) Infertility Prevention Program (IPP).

Healthy People 2010 Objective (25-2a.): Reduce gonorrhea rates.

Healthy People 2020 Objective STD HP2020-6: Reduce gonorrhea rates.

Rate of Gonorrhea, Washoe County and Nevada, 2000 - 2008.*



From 2004-2008, The gonorrhea rate for both Washoe County and Nevada declined steadily. Since 2004, the rate for both has been in decline.

However, the Healthy People 2010 target rate of 19 per 100,000 population was not met in any study year.

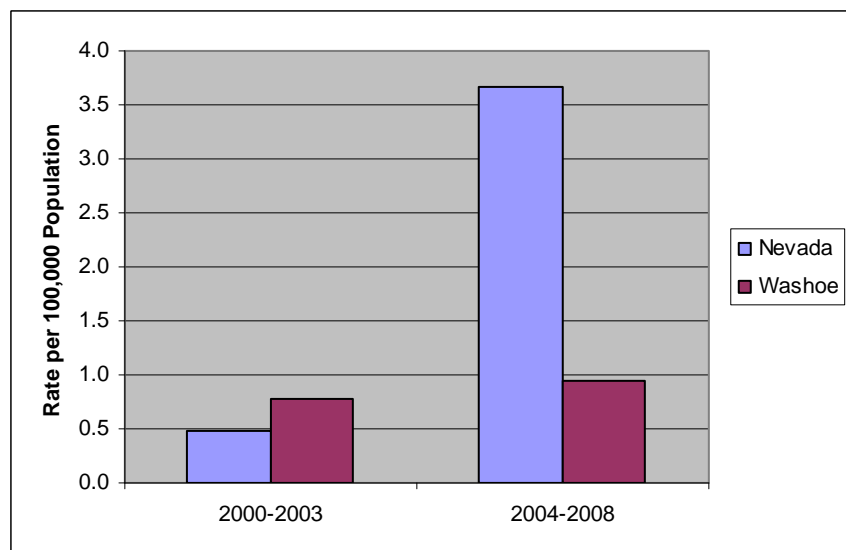
Healthy People 2010 Objective (25-3.): Reduce sustained transmission of primary and secondary syphilis.

Healthy People 2020 Objective STD HP2020-7: Reduce sustained domestic transmission of primary and secondary syphilis.

Aggregated Rate of Primary and Secondary Syphilis, Washoe County and Nevada, 2000 - 2003 and 2004 - 2008.*

The rate of primary and secondary syphilis increased sevenfold for Nevada to a rate which was more than three and a half times the Washoe County rate between 2000-2008.

Neither the state nor county reached the Healthy People 2010 goal rate of .2 per 100,000 population.



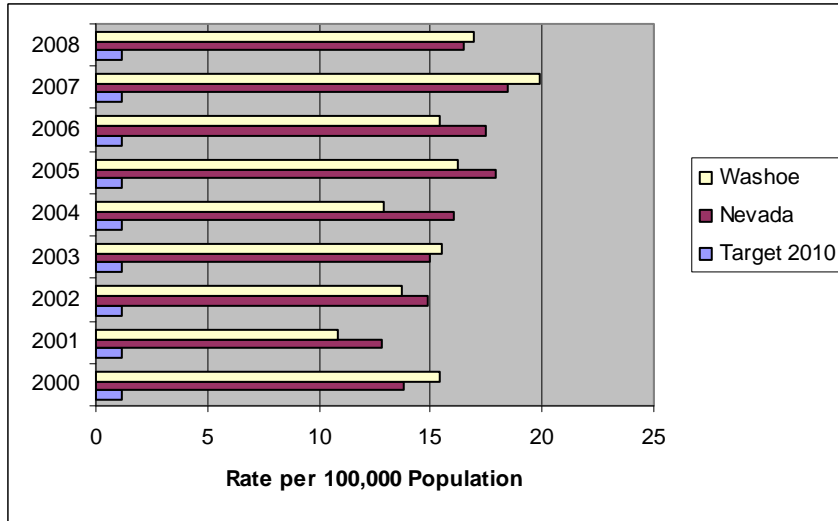
*Nevada data are provided by the STD-MIS database.

Substance Abuse

Healthy People 2010 Objective (26-3): Reduce drug-induced deaths.

Healthy People 2020 Objective SA HP2020-12: Reduce drug-induced deaths.

Age-Adjusted Drug-Induced Death Rate, Washoe County and Nevada 2000 - 2008.*



The drug induced mortality rate increased during the years 2001 to 2007 for both the state and Washoe County. The rate declined in 2008.

The Healthy People 2010 target rate of 1.2 per 100,000 population was not attained.

*These rates are age-adjusted to the 2000 U.S. standard population. The Nevada data are from Nevada Vital Statistics Records. Note: 2007 and 2008 are not final and are subject to change.

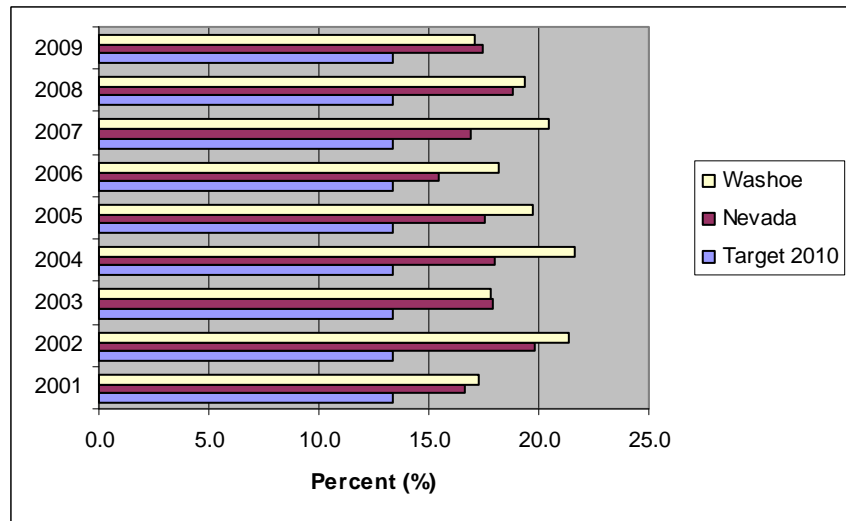
Healthy People 2010 Objective (26-11c.): Reduce the proportion of adults, aged 18 years and older, engaging in binge drinking of alcohol.

Healthy People 2020 Objective SA HP2020-14.3: Reduce the proportion of adults, aged 18 years and older, engaging in binge drinking of alcohol.

Proportion of Adults Aged 18 Years and Older Engaging in Binge Drinking Alcohol, Washoe County and Nevada, BRFSS Data, 2001 - 2009.*

During 2001—2009, the percentage of adults, aged 18 years and older, engaged in the binge drinking of alcohol fluctuated for both Nevada and Washoe County.

The goal of 13.4 percent as set by Healthy People 2010 was not achieved.



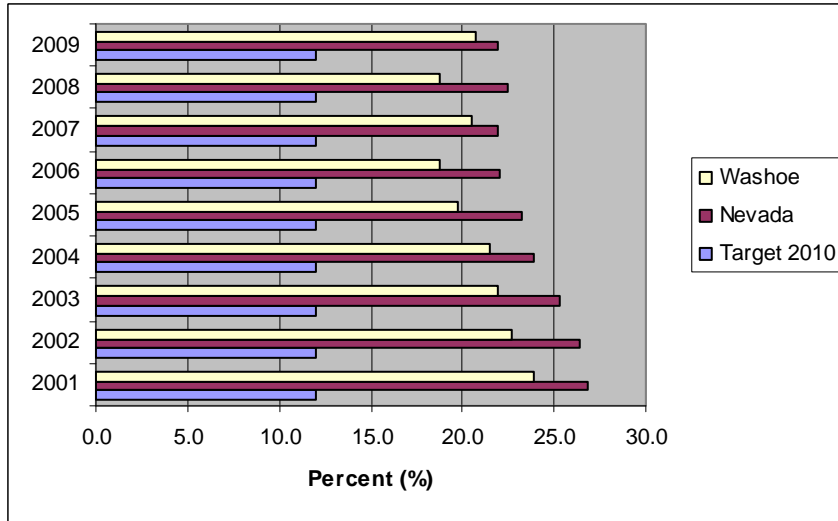
*These percentages are weighted to survey population characteristics. Not all counties were included in the survey results.

Tobacco Use

Healthy People 2010 Objective (27-1a.): Reduce cigarette smoking by adults.

Healthy People 2020 Objective TU HP2020-1.1: Reduce tobacco use by adults – cigarette smoking.

Proportion of Cigarette Smoking Adults, Washoe County and Nevada, BRFSS Data, 2001 - 2009.*



The percentage of cigarette smoking adults declined for Washoe County and Nevada during 2001 to 2006.

The two rates steadied in 2007, and then slightly fluctuated in opposite directions in 2008, before returning to very near the 2007 level in 2009.

The Healthy People 2010 goal of 12 percent was not met.

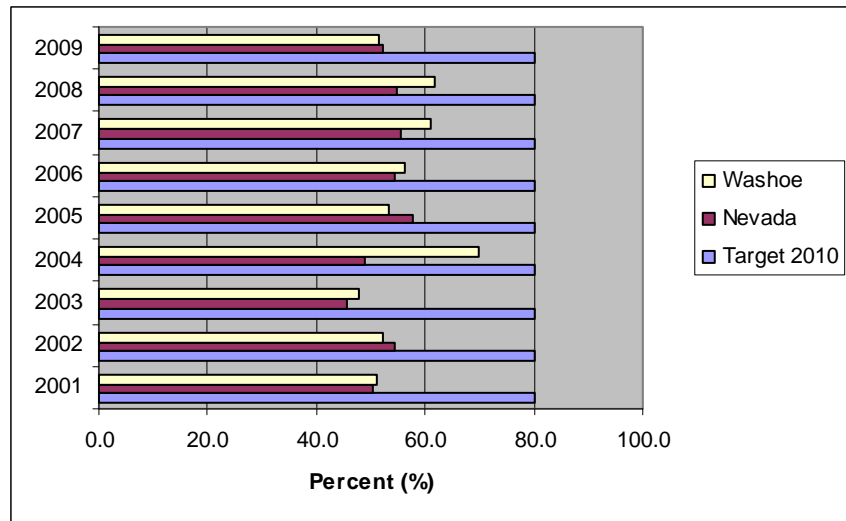
Healthy People 2010 Objective (27-5.): Increase smoking cessation attempts by adult smokers.

Healthy People 2020 Objective TU HP2020-4.1: Increase smoking cessation attempts by adult smokers.

Proportion of Adults Reporting Smoking Cessation Attempts in the Past Year, Washoe County and Nevada, BRFSS Data, 2001 - 2009.*

The percentage of adults reporting smoking cessation attempts in the past year fluctuated over the years 2001—2009 for Nevada and Washoe County.

The Healthy People 2010 target of 80 percent was not reached by the state nor the county.



*These percentages are weighted to survey population characteristics. Not all counties were included in the survey results.

Healthy People 2010: Washoe County Indicator Exemptions

The following Healthy People 2010 objectives were not reported in the Washoe County Report due to a lack of available data:

- Adolescent Health (AH):
 - AH HP2020-1c: Increase the percentage of students whose reading skills are at or above the proficient achievement level for their grade.
 - AH HP2020-1d: Increase the percentage of students whose mathematical skills are at or above the proficient achievement level for their grade.
- Early and Middle Childhood (EMC):
 - EMC HP2020-3: Increase the proportion of elementary, middle, and senior high schools that require school health education.
- Family Planning (FP):
 - FP HP2020-9c: Increase the proportion of female adolescents aged 15 years who have never had sexual intercourse.
 - FP HP2020-9d: Increase the proportion of male adolescents aged 15 who have never had sexual intercourse.
 - FP HP2020-10e: The proportion of sexually active females aged 15 to 19 who used a condom at last intercourse.
 - FP HP2020-10f: The proportion of sexually active males aged 15 to 19 who used a condom at last intercourse.
- Immunizations and Infectious Diseases (IID):
 - IID HP2020-18: Percentage of children aged 19 to 35 months who receive recommended vaccines.
 - IID HP2020-20: Increase the percentage of children aged 19 to 35 months who receive the recommended vaccines.
- Injury and Violence Prevention (IVP):
 - IVP HP2020-13: Reduce physical fighting among adolescents.
 - IVP HP2020-14: Reduce weapon carrying by adolescents on school property.
- Mental Health and Mental Disorders (MHMD):
 - MHMD HP2020-2: Proportion of adolescents, grades 9 through 12, reporting suicide attempts in the past 12 months.
- Nutrition and Weight Status (NWS):
 - NWS HP2020-5c: Reduce the proportion of adolescents, aged 12 to 19 years, who are overweight or obese.
- Occupational Safety and Health (OSH):
 - OSH HP2020-7a: Work-related injury death rate, aged 16 years and older.
- Physical Activity and Fitness (PAF):
 - PAF HP2020-7: Increase the proportion of adolescents that meet the current physical activity guidelines for aerobic physical activity and for muscle-strengthening activity.

- Substance Abuse (SA):
 - SA HP2020-4: Percentage of adolescents who report they rode during the previous 30 days with a driver who had been drinking alcohol, grades 9 through 12.
 - SA HP2020-7d: Proportion of adolescents engaging in binge drinking of alcohol.
 - SA HP2020-9b: Proportion of adolescents in the 10th grade reporting steroid use.
 - SA HP2020-9c: Proportion of adolescents in the 12th grade reporting steroid use.
 - SA HP1010-10: Reduce the proportion of adolescents who use inhalants.
- Tobacco Use (TU):
 - TU HP2020-6b: Proportion of adolescents reporting cigarette use in the past month.
 - TU HP2020-6c: Proportion of adolescents reporting spit tobacco use in the past month.

The following Healthy People 2010 objectives were not reported in the Washoe County Report due to a lack of available data, counts below 5 but greater than 0:

- Immunizations and Infectious Diseases (IID):
 - IID HP2020-14: Reduce or eliminate cases of vaccine preventable diseases.