

# Nye County

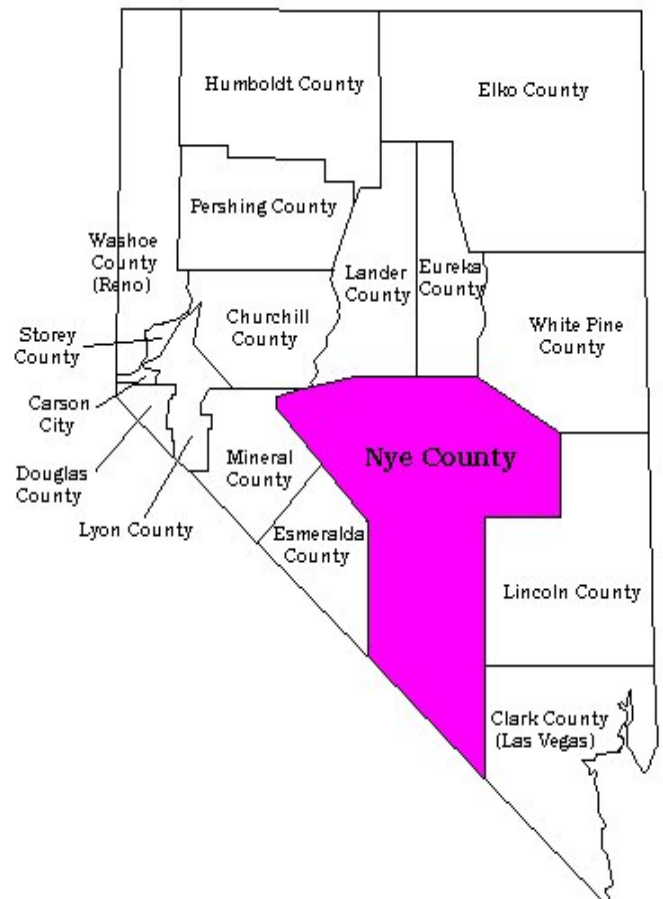


Population (2008)	47,370
Land Area (square miles)	18,147
Persons per square mile	2.6
Race/Ethnicity	
• White	86.1%
• Black	1.2%
• American Indian & Alaskan Native	2.3%
• Asian	1.5%
• Hispanic or Latino origin	8.8%
Median Household Income	\$42,348
Persons Below Poverty	12.5%

Population and race/ethnicity data are from the Nevada State Demographer; Income and poverty data are from the U.S. Census Bureau

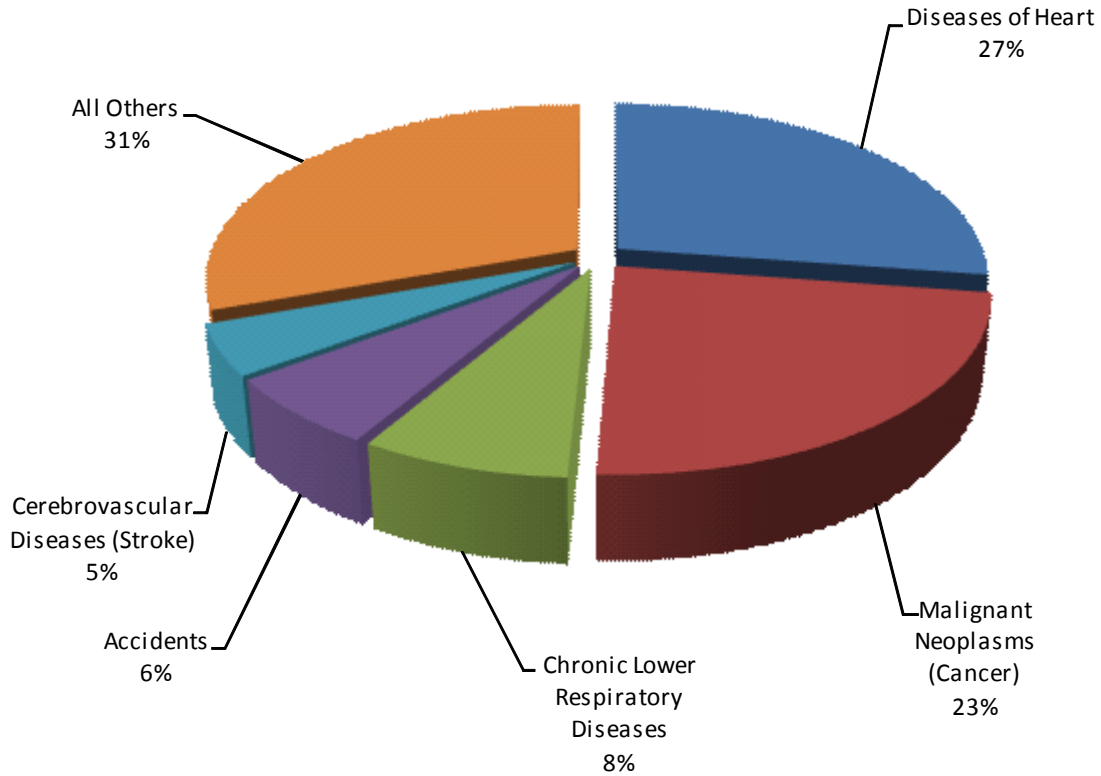
## Healthy People Highlights:

- The Nye County rate for the percentage of persons diagnosed with diabetes sharply increased from 2000-2009.
- Nye County nearly met the Healthy People 2010 target for high school completion rate, the county has consistently exceeded the Nevada rate over the reported years 2003 to 2009.
- Nye County consistently met the Healthy People 2010 adolescent pregnancy rate among females, ages 15 to 17 years, and reported a rate lower than the state on average from 2000-2008.
- Nye County had a higher percentage of adults with high blood pressure on average than Nevada during 2000-2008.
- From 2000-2008, the fall mortality rate for Nye County more than doubled.
- The mortality rate for children, ages 1 to 4 years, for Nye County averaged over twice that of the state rate from 2000-2009.
- Nye County's drug-induced death rate was more than 12 times the Healthy People 2010 target.



# Leading Causes of Death

## Nye



2000 - 2008 Pooled Data

The list of Nye County's top five leading causes of death was led by heart disease (27%), closely followed by malignant neoplasms—cancer (23%). Chronic lower respiratory diseases (8%), accidents (6%), and cerebrovascular diseases—stroke (5%) rounded out the list. All other causes of death accounted for the remaining 31% of the county's mortality.

Similarly, the leading cause of death for Nevada was heart disease (26%), followed by malignant neoplasms—cancer (23%), chronic lower respiratory diseases (6%), accidents (5%), and cerebrovascular diseases (5%).

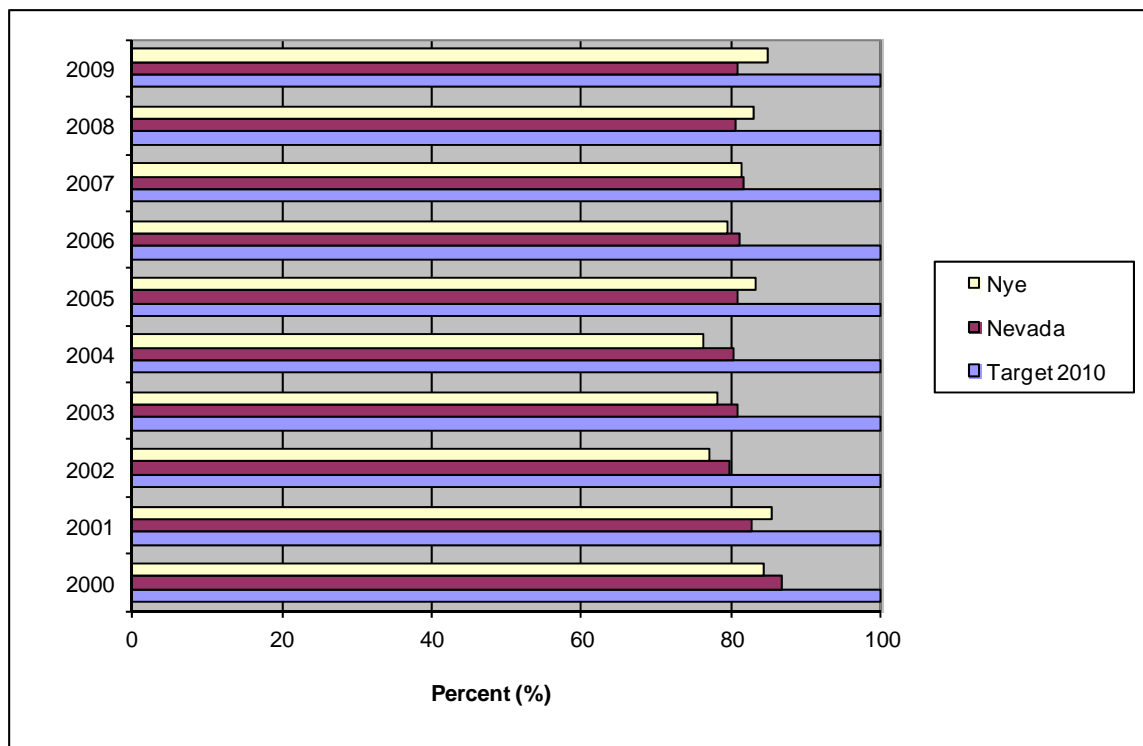
\*The data are from Nevada Vital Statistics Records.  
Note: 2007 and 2008 data are not final and are subject to change.

# Access to Quality Health Services

**Healthy People 2010 Objective (1-1):** Increase the proportion of persons with health insurance.

**Healthy People 2020 Objective AHS HP2020-1:** Increase the proportion of persons with health insurance.

**Proportion of Persons with Health Insurance, Nye County and Nevada, BRFSS Data, 2000 - 2009.\***



Neither Nye County nor the state attained the Healthy People 2010 target of 100 percent for the proportion of persons with health insurance. Both the county and Nevada rates remained steady around 80% over the Behavioral Risk Factor Surveillance System data years, 2000 to 2009.

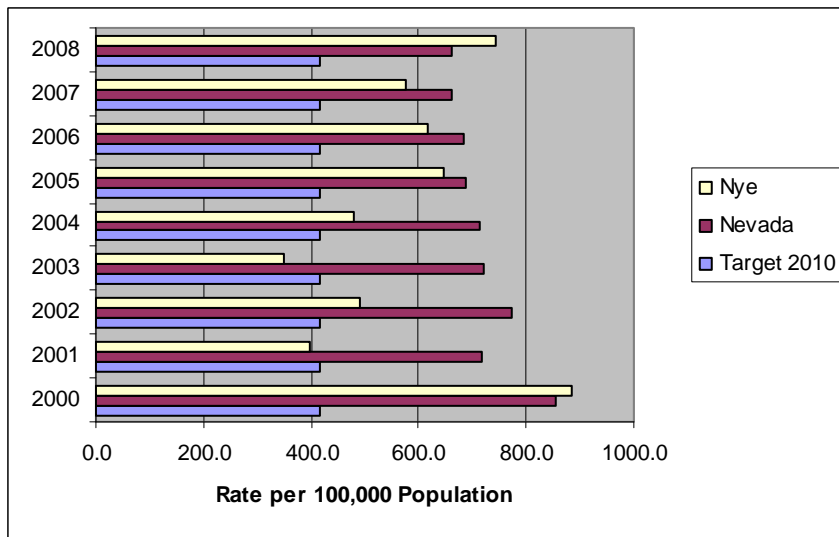
\*These percentages are weighted to survey population characteristics. Not all counties were included in the survey results.

# Arthritis, Osteoporosis, and Chronic Back Conditions

**Healthy People 2010 Objective (15-28):** Reduce hip fractures among females and males aged 65 and older.

**Healthy People 2020 Objective AOCBC HP2020-11:** Reduce hip fractures among older adults.

**Hospitalization Rate for Hip Fractures Among Females Aged 65 Years and Older, Nye County and Nevada, 2000 - 2008.\***

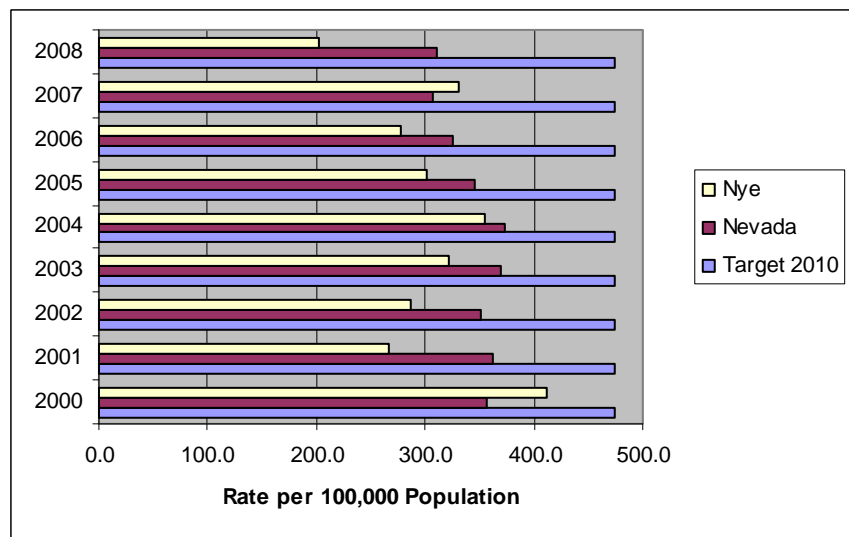


Nye County's hospitalization rate for hip fractures among females, ages 65 years and older decreased to meet the Healthy People 2010 target rate of 416 per 100,000 population in the years 2001 and 2003. However, after 2003 it increased again to almost twice the target rate.

**Hospitalization Rate for Hip Fractures Among Males Aged 65 Years and Older, Nye County and Nevada, 2000 - 2008.\***

Both Nye County and Nevada had lower rates for hip fractures among males, ages 65 years and older, over the reporting period.

Both met the Healthy People target rate of 474 per 100,000 population for each year between 2000-2008.



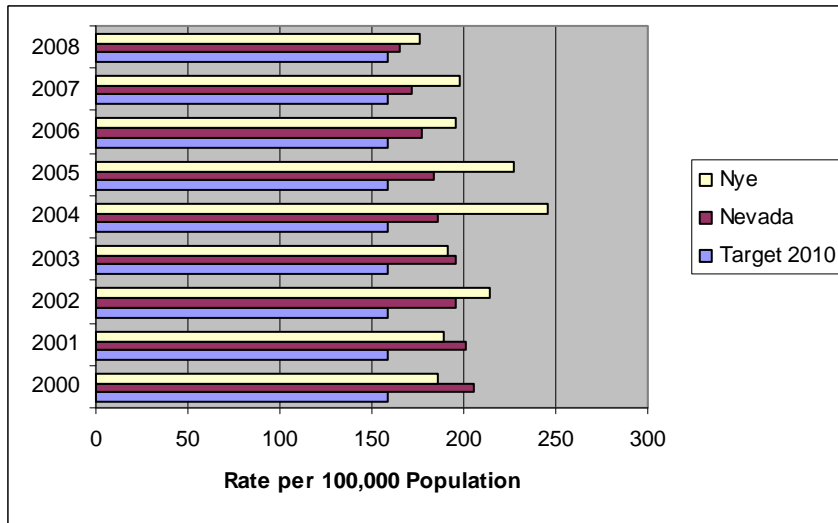
\*The Nevada data are from Nevada Inpatient Hospital Discharge (NIHDD).

# Cancer

**Healthy People 2010 Objective (3-1):** Reduce the overall cancer death rate.

**Healthy People 2020 Objective C HP2020-1:** Reduce the overall cancer death rate.

**Age-Adjusted Overall Cancer Death Rate, Nye County and Nevada, 2000 - 2008.\***



Nevada's cancer mortality rate declined over the years 2000—2008.

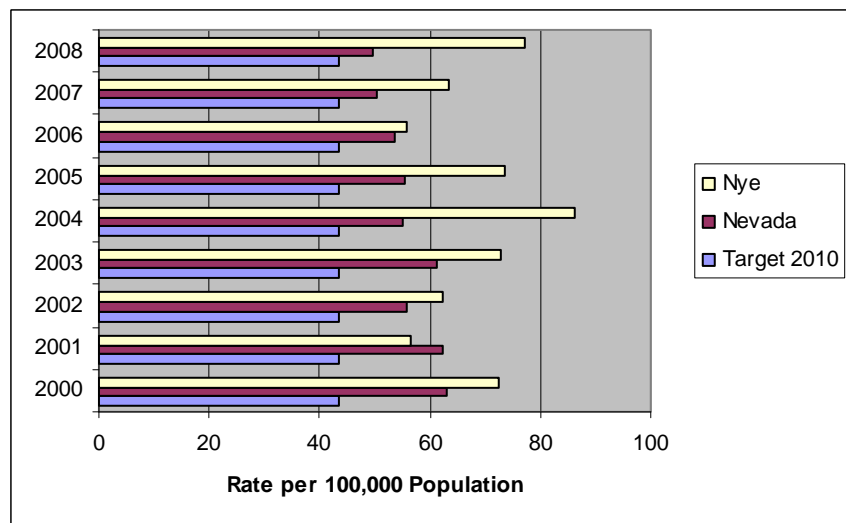
Nye County's declined from 2004-2008.

The Healthy People 2010 target rate of 158.6 deaths per 100,000 population was not met by either Nye County nor Nevada.

**Healthy People 2010 Objective (3-2):** Reduce the lung cancer death rate.

**Healthy People 2020 Objective C HP2020-2:** Reduce the lung cancer death rate.

**Age-Adjusted Lung Cancer Death Rate, Nye County and Nevada, 2000 - 2008.\***



The lung cancer mortality rate fluctuated for Nye County from 2000-2008, ending up higher in 2008 than in 2000.

Nevada's rate has been in decline since the year 2005.

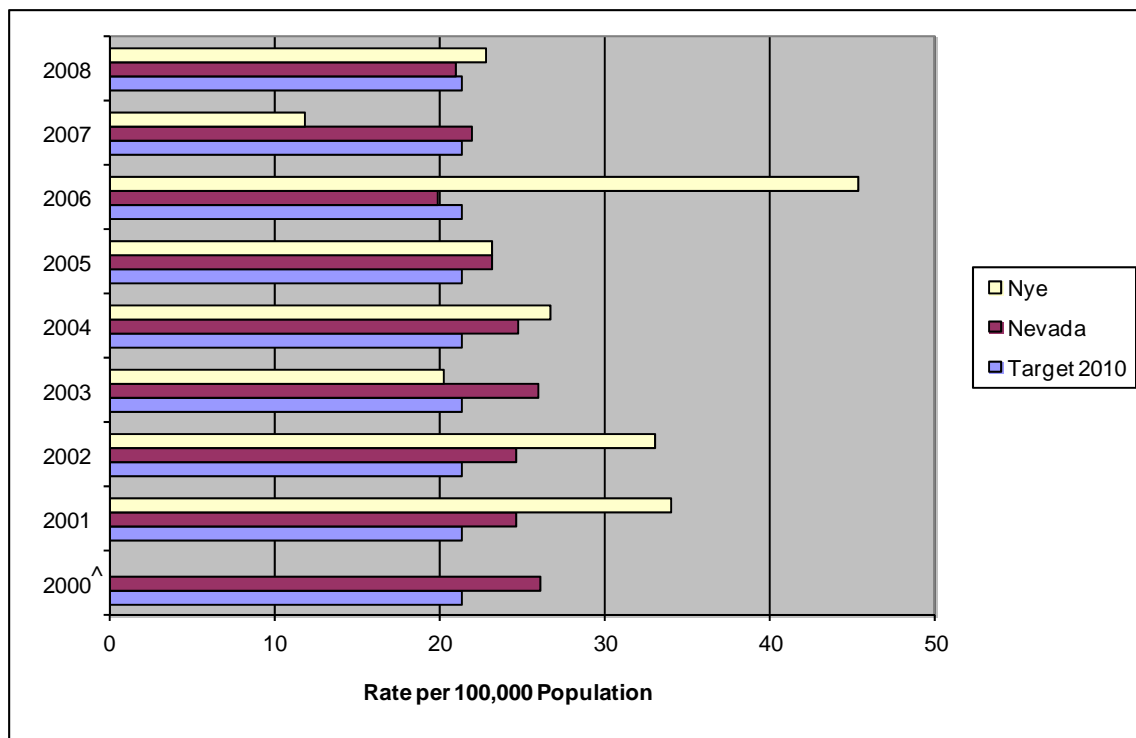
Neither the county, nor the state, have attained the Healthy People 2010 objective rate of 43.3 deaths per 100,000 population.

\*These rates are age-adjusted to the 2000 U.S. standard population. The Nevada data are from Nevada Vital Statistics Records. Note: 2007 and 2008 data are not final and are subject to change.

**Healthy People 2010 Objective (3-3):** Reduce the breast cancer death rate.

**Healthy People 2020 Objective C HP2020-3:** Reduce female the breast cancer death rate.

**Age-Adjusted Female Breast Cancer Death Rate, Nye County and Nevada, 2000 - 2008.\***



<sup>^</sup> 2000 data are not available for Nye County due to small counts.

The rate of female breast cancer mortality fluctuated from 2000-2008 for Nye county and decreased for Nevada overall.

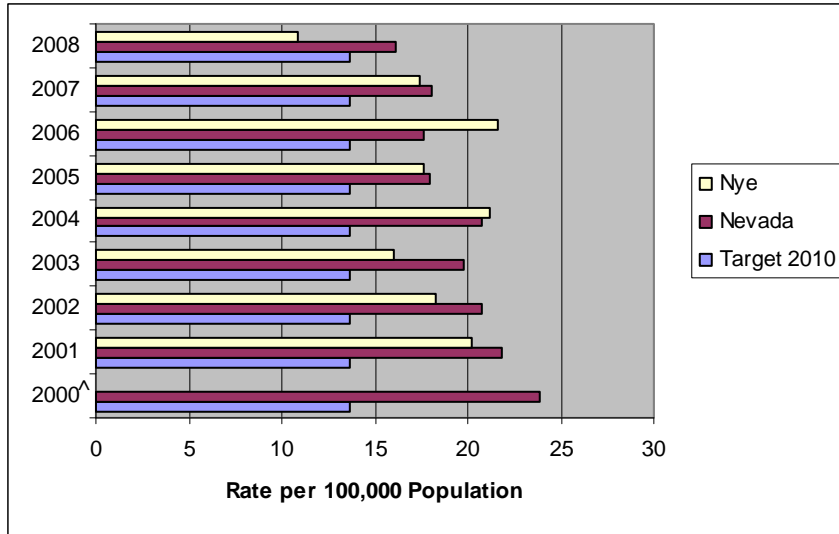
Nevada met the Healthy People 2010 target rate of 21.3 deaths per 100,000 population in the years 2006 and 2008. Nye County reached the goal in 2003 and 2007.

\*These rates are age-adjusted to the 2000 U.S. standard population. The Nevada data are from Nevada Vital Statistics Records. Note: 2007 and 2008 data are not final and are subject to change.

**Healthy People 2010 Objective (3-5):** Reduce the colorectal cancer death rate.

**Healthy People 2020 Objective C HP2020-5:** Reduce the colorectal cancer death rate.

**Age-Adjusted Colorectal Cancer Death Rate, Nye County and Nevada, 2000 - 2008.\***



The mortality rate for colorectal cancer has declined during the decade in Nevada and fluctuated for Nye County from 2000-2008.

Nye County's rate decreased from 2006-2008. In 2008, the county hit and surpassed the Healthy People 2010 target rate of 13.7 deaths per 100,000 population.

<sup>^</sup> 2000 data are not available for Nye County due to small counts.

**Healthy People 2010 Objective (3-6):** Reduce the oropharyngeal cancer death rate.

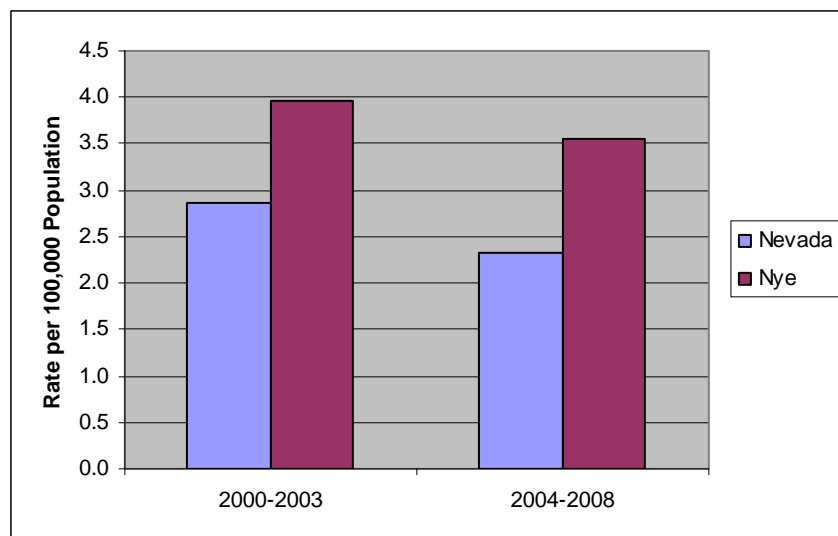
**Healthy People 2020 Objective C HP2020-6:** Reduce the oropharyngeal cancer death rate.

Oropharyngeal cancer mortality rates declined for both Nevada and Nye County on average from 2000-2008.

The Nye County rate was higher than the state rate in both reporting periods, 2000—2003 and 2004—2008.

Nevada met the Healthy People 2010 target rate of 2.4 deaths per 100,000 population in 2004-2008.

**Aggregated Age-Adjusted Oropharyngeal Cancer Death Rate, Nye County and Nevada, 2000 - 2003 and 2004 - 2008.\***

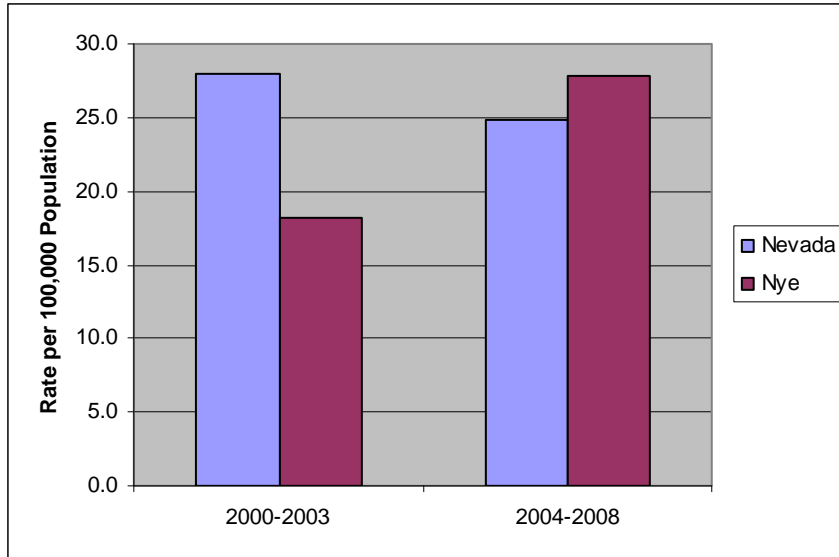


\*These rates are age-adjusted to the 2000 U.S. standard population. The Nevada data are from Nevada Vital Statistics Records. Note: 2007 and 2008 data are not final and are subject to change.

**Healthy People 2010 Objective (3-7):** Reduce the prostate cancer death rate.

**Healthy People 2020 Objective C HP2020-7:** Reduce the prostate cancer death rate.

**Aggregated Age-Adjusted Prostate Cancer Death Rate, Nye County and Nevada, 2000—2003 and 2004—2008.\***



In the years 2000—2003, the state had a higher rate of prostate cancer mortality than Nye County.

In 2004—2008, the county rate surpassed the state rate, which had declined.

From 2000-2008, the Nye County rate increased by more than 50 percent. However, this was still below the Healthy People 2010 target rate of 28.2 deaths per 100,000.

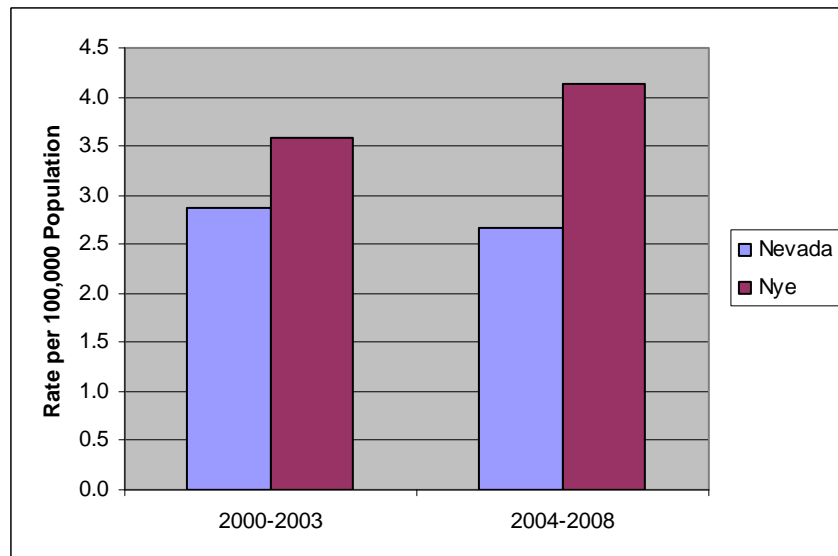
**Healthy People 2010 Objective (3-8):** Reduce the rate of melanoma cancer.

**Healthy People 2020 Objective C HP2020-8:** Reduce melanoma cancer death rate.

**Aggregated Age-Adjusted Melanoma Cancer Death Rate, Nye County and Nevada, 2000 - 2003 and 2004—2008.\***

On average from 2000-2008, the melanoma cancer mortality rate increased in Nye County and decreased for Nevada.

Neither the state nor the county met the Healthy People 2010 target rate of 2.3 deaths per 100,000 population.



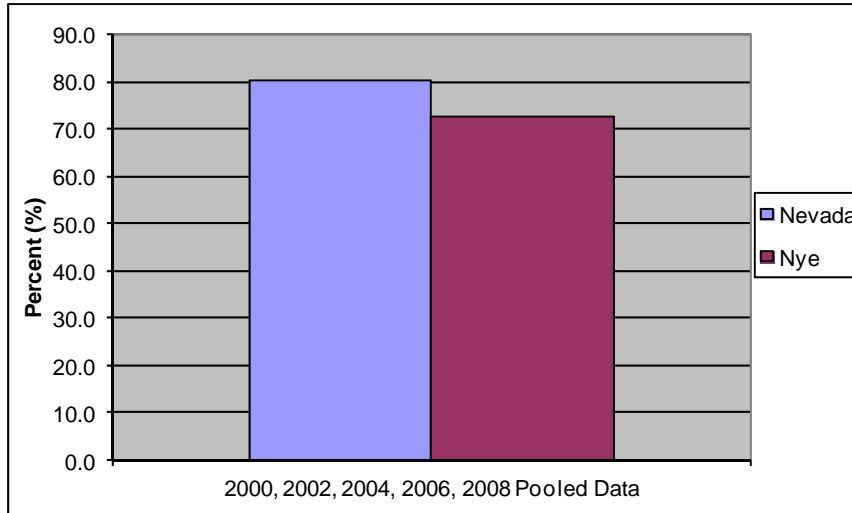
\*These rates are age-adjusted to the 2000 U.S. standard population. The Nevada data are from Nevada Vital Statistics Records. Note: 2007 and 2008 data are not final and are subject to change.



**Healthy People 2010 Objective (3-11b.):** Increase the proportion of women aged 18 years and older who have had a Pap test in the preceding three years.

**Healthy People 2020 Objective C HP2020-15:** Increase the proportion of women who receive a cervical cancer screening based on the most recent guidelines.

**Aggregated Proportion of Women Aged 18 and Older Receiving a Pap Test within Three Years, Nye County and Nevada, BRFSS Data, 2000, 2002, 2004, 2006, 2008.\***



The percentage of women, 18 years of age and older, receiving a Pap test within three years was lower in Nye County than in Nevada during the study years.

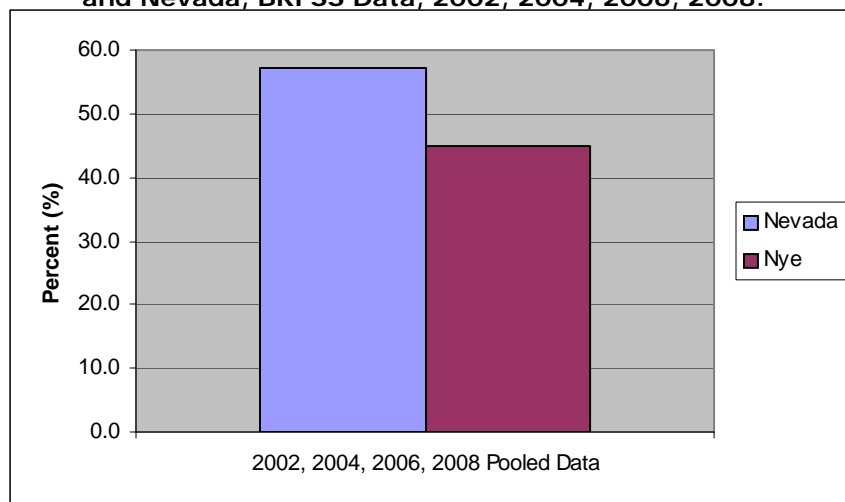
The Healthy People 2010 target of 90 percent was not reached by either the state nor by the county.

**Healthy People 2010 Objective (3-12a.):** Increase the proportion of adults aged 50+ who have had a fecal occult blood test in the preceding two years.

**Healthy People 2020 Objective C HP2020-16:** Increase the proportion of adults who receive a colorectal cancer screening based on the most recent guidelines.

**Aggregated Proportion of Adults Aged 50+ Who Have Had A Fecal Occult Blood Test Within the Preceding 2 Years, County and Nevada, BRFSS Data, 2002, 2004, 2006, 2008.\***

Nye County had a lower rate of adults, aged 50 and older, who have had a fecal occult blood test within the preceding two years, than the state during the reported years. Both met the Healthy People 2010 goal of 33 percent.

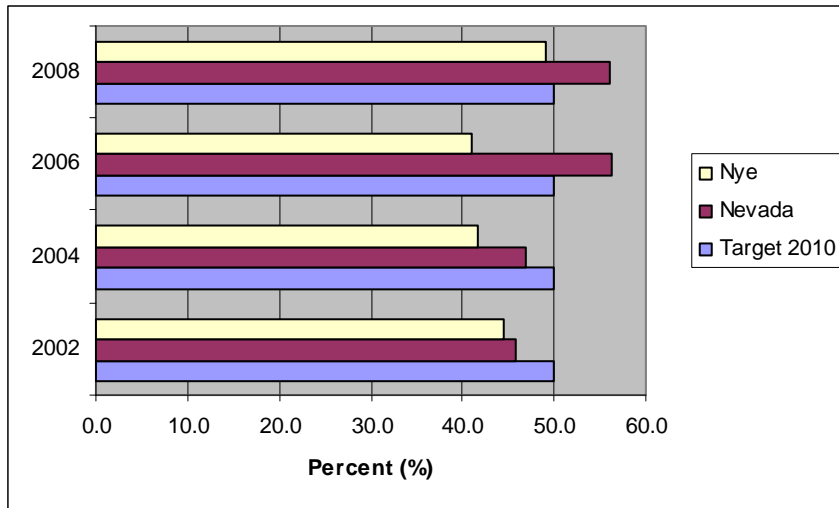


\*These percentages are weighted to survey population characteristics. Not all counties were included in the survey results.

**Healthy People 2010 Objective (3-12b.):** Increase the proportion of adults aged 50+ who have ever had a sigmoidoscopy or colonoscopy.

**Healthy People 2020 Objective C HP2020-16:** Increase the proportion of adults who receive a colorectal cancer screening based on the most recent guidelines.

**Proportion of Adults Aged 50+ Who Have Ever Had a Sigmoidoscopy or Colonoscopy, Nye County and Nevada, BRFSS Data, 2002, 2004, 2006, 2008.\***



The percentage of adults, aged 50 and older, who have ever had a sigmoidoscopy or colonoscopy increased for Nevada and fluctuated for Nye County from 2000-2008.

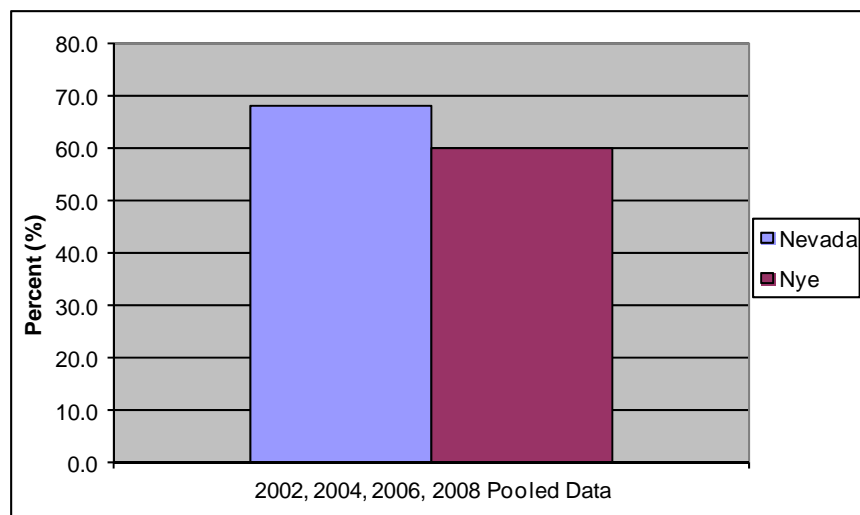
The Healthy People 2010 goal of 50 percent was consistently met by Nye County from 2002 to 2008. Nevada attained the target in 2002 and 2004.

**Healthy People 2010 Objective (3-13):** Increase the proportion of women aged 40+ who have had a mammogram in the preceding two years.

**Healthy People 2020 Objective C HP2020-17:** Increase the proportion of women who receive a breast cancer screening based on the most recent guidelines.

**Aggregated Proportion of Women Aged 40+ Who Have Had A Mammogram in The Preceding 2 Years, Nye County and Nevada, BRFSS Data, 2000, 2002, 2004, 2006, 2008.\***

On average from 2000-2008, both Nye County and Nevada met the Healthy People 2010 target of 70 percent for the proportion of women, ages 40 years and older, who have had a mammogram in the preceding two years.



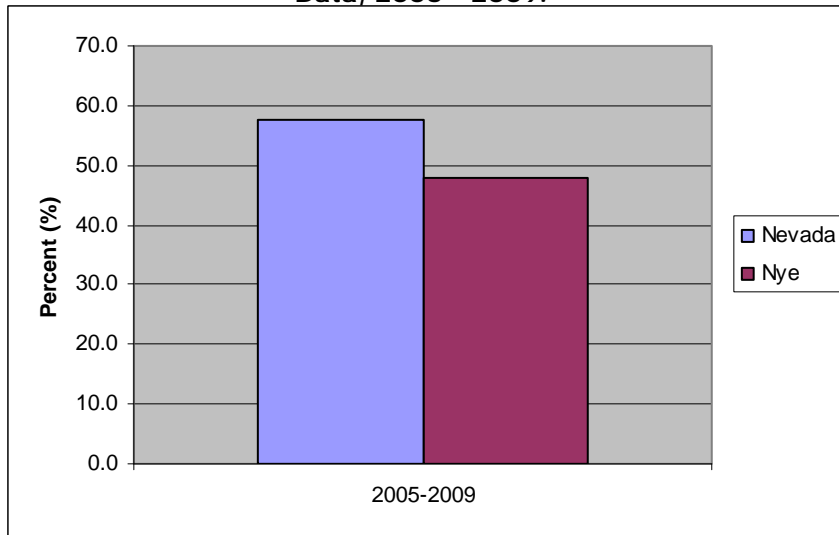
\*These percentages are weighted to survey population characteristics. Not all counties were included in the survey results.

# Diabetes

**Healthy People 2010 Objective (5-1):** Increase the proportion of persons with diabetes who receive formal diabetes education.

**Healthy People 2020 Objective D HP2020-14:** Increase the proportion of persons with diabetes who receive formal diabetes education.

**Aggregated Proportion of Persons With Diabetes Receiving Formal Diabetes Education, Nye County and Nevada, BRFSS Data, 2005 - 2009.\***



On average from 2005-2009, neither Nye County nor Nevada met the Healthy People 2010 goal of 60 percent of diabetics receiving formal diabetes education.

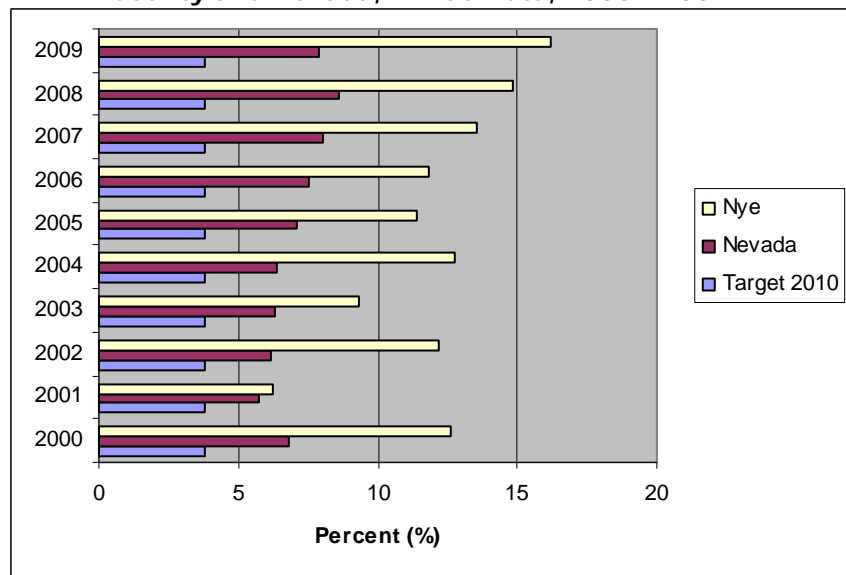
**Healthy People 2010 Objective (5-3):** Reduce the overall percentage of diabetes that is clinically diagnosed.

**Healthy People 2020 Objective D HP2020-2:** Reduce the annual number of new cases of diagnosed diabetes in the population.

**Proportion of Persons with Clinically Diagnosed Diabetes, Nye County and Nevada, BRFSS Data, 2000 - 2009.\***

Neither Nye County nor Nevada attained the Healthy People 2010 target of 3.8 percent for the percentage of persons diagnosed with diabetes.

Nye County's rate increased nearly 30 percent from 2000-2009 according to Behavioral Risk Factor Surveillance System data.

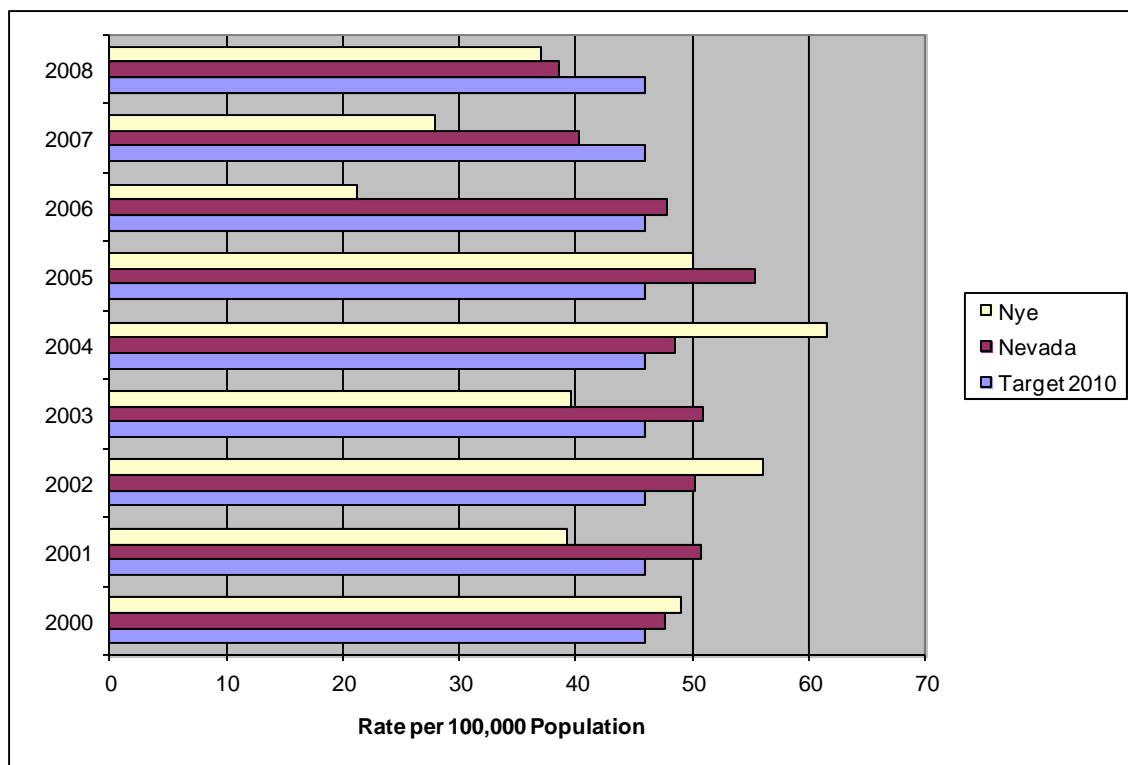


\*These percentages are weighted to survey population characteristics. Not all counties were included in the survey results.

**Healthy People 2010 Objective (5-5):** Reduce the diabetes death rate.

**Healthy People 2020 Objective D HP2020-3:** Reduce the diabetes death rate.

**Age-Adjusted Diabetes Death Rate, Nye County and Nevada, 2000 - 2008.\***



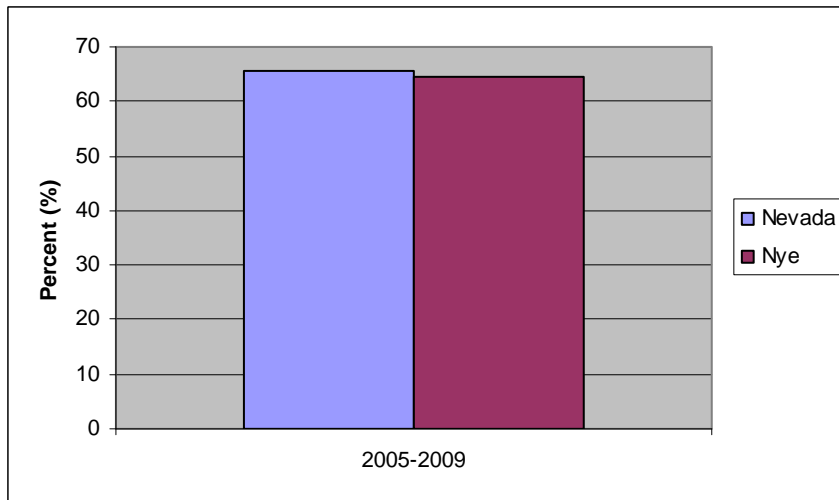
The diabetes mortality rate for the state declined from 2005 to 2008. The diabetes mortality rate for Nye County also met the Healthy People 2010 target rate of 46 deaths per 100,000 population from 2006-2008, although the county rate increased for each of those years. The county rate fluctuated during the study years 2000-2008.

\*These rates are age-adjusted to the 2000 U.S. standard population. The Nevada data are from Nevada Vital Statistics Records. Note: 2007 and 2008 data are not final and are subject to change.

**Healthy People 2010 Objective (5-12):** Increase the proportion of adults with diabetes who have had a glycosylated hemoglobin measurement at least two times a year.

**Healthy People 2020 Objective D HP2020-11:** Increase the proportion of adults with diabetes who have a glycosylated hemoglobin measurement at least twice a year.

**Aggregated Proportion of Adults with Diabetes Who Have Had a Glycosylated Hemoglobin Measurement at Least Two Times a Year, Nye County and Nevada, BRFSS Data, 2005 - 2009.\***



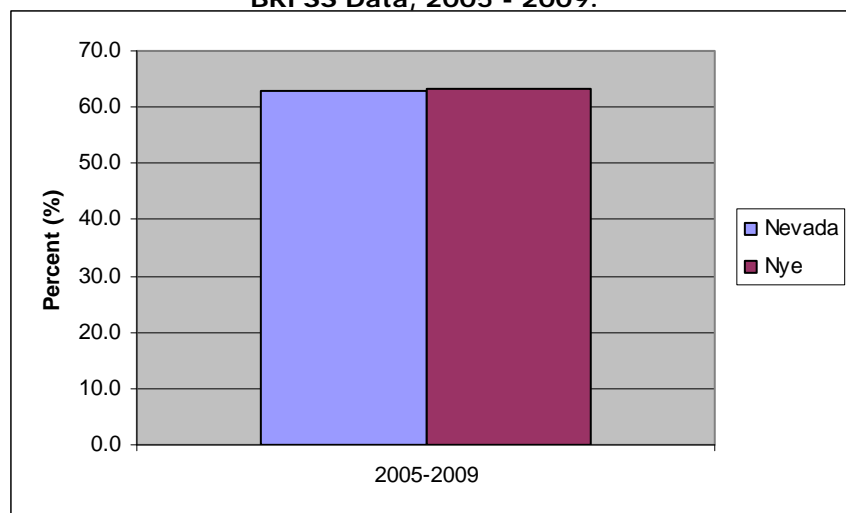
Both the state and Nye County met the Healthy People 2010 objective of 60 percent for the proportion of diabetics who have had an A1C test at least twice within the past year from 2005-2009.

**Healthy People 2010 Objective (5-14):** Increase the proportion of adults with diabetes who have had at least an annual foot examination.

**Healthy People 2020 Objective D HP2020-9:** Increase the proportion of adults with diabetes who have had at least an annual foot examination.

**Aggregated Proportion of Adults with Diabetes Who Have Had at Least an Annual Foot Examination, Nye County and Nevada, BRFSS Data, 2005 - 2009.\***

From 2005—2009 the percentage of adults with diabetes who have had at least an annual foot exam was reported below the Healthy People 2010 goal of 90 percent for both Nye County and Nevada.



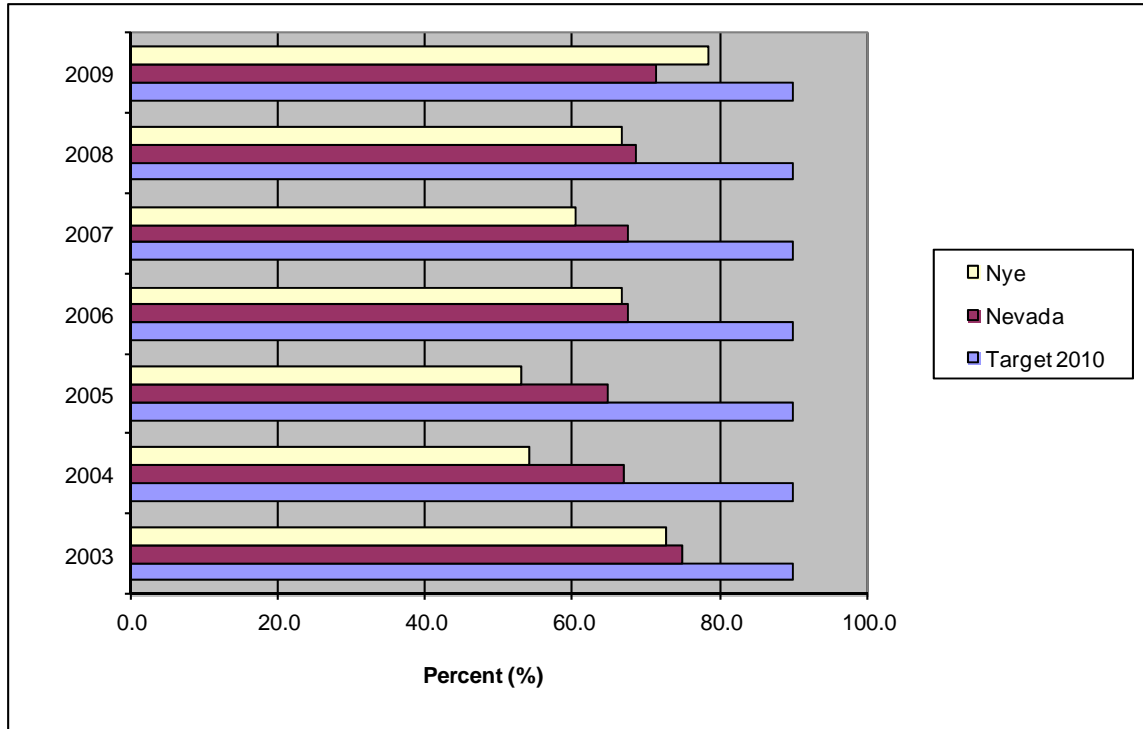
\*These percentages are weighted to survey population characteristics. Not all counties were included in the survey results.

# Education and Community-Based Programs

**Healthy People 2010 Objective ECBP HP2010-1:** Increase high school completion.

**Healthy People 2020 Objective ECBP HP2020-6:** Increase the proportion of the population that completes high school education.

**High School Completion Rate (Percent), Nye County and Nevada, 2003 - 2009.\***



From 2003-2009, neither Nye County nor Nevada met the Healthy People 2010 objective of 90 percent for high school completion. The county rate surpassed the state in 2009.

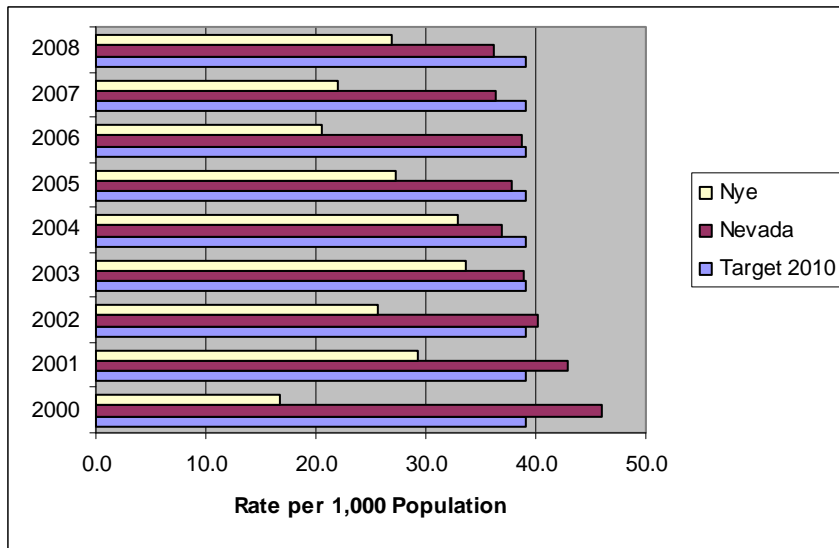
\*The Nevada data are from the Nevada Annual Reports of Accountability.

# Family Planning

**Healthy People 2010 Objective (9-7):** Reduce pregnancies among adolescent females.

**Healthy People 2020 Objective FP HP2020–8:** Reduce pregnancies among adolescent females, aged 15-17 and aged 18-19.

**Adolescent Pregnancy Rate Among Females Aged 15 to 17 Years, Nye County and Nevada, 2000 - 2008.\***

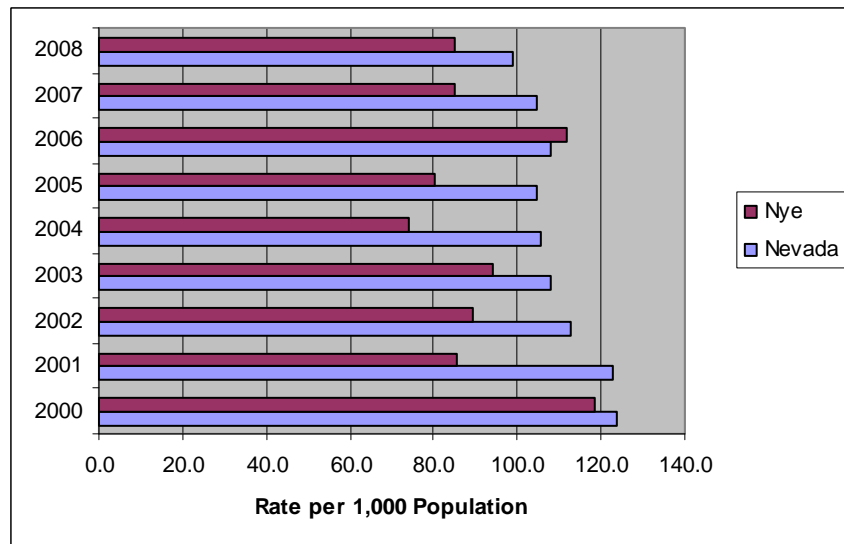


Nye County consistently met the Healthy People 2010 target rate of 39 per 1,000 population for the adolescent pregnancy rate among females, ages 15 to 17 years, and reported a rate lower than the state from 2000-2008.

**Adolescent Pregnancy Rate Among Females Aged 18 to 19 Years, Nye County and Nevada, 2000 - 2008.\***

Adolescent pregnancy rates among females, aged 18 to 19 years, fluctuated in Nye County over the years 2000 to 2008, while the Nevada rate declined.

This is a new objective for Healthy People 2020 so no 2010 target exists.

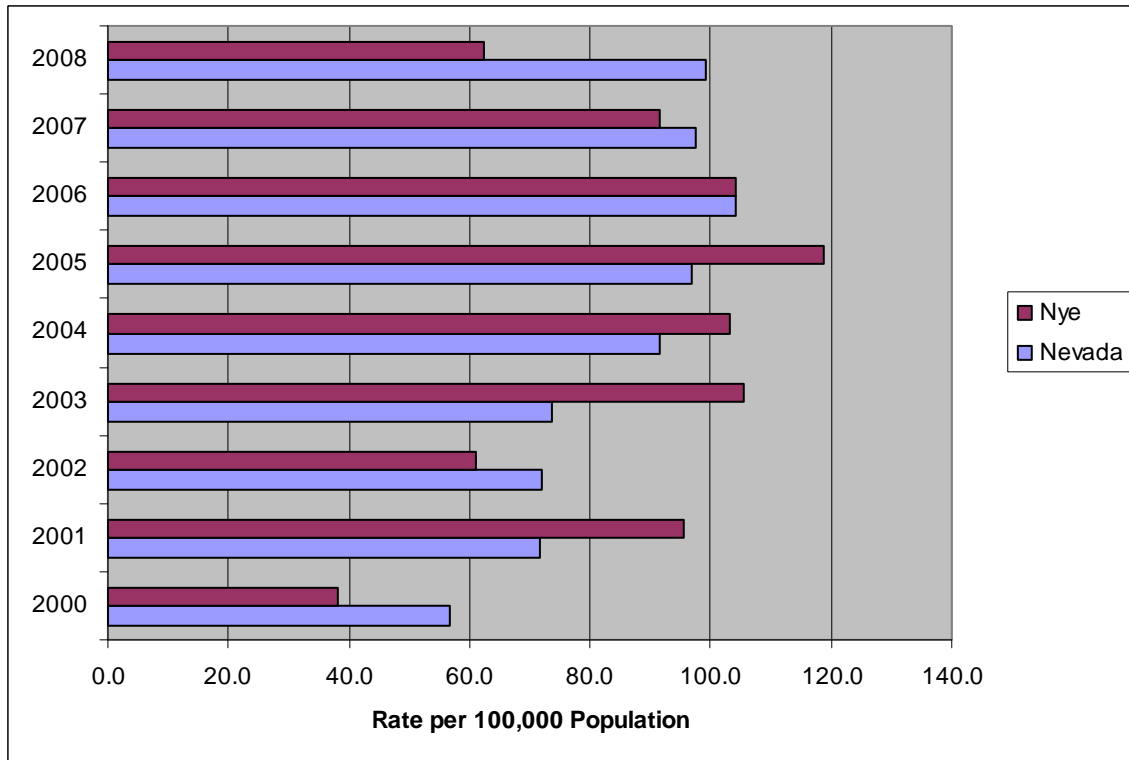


\*The Nevada data are from Nevada Vital Statistics Records.  
Note: 2008 data are not final and are subject to change.

# Healthcare-Associated Infections

**Healthy People 2020 Objective HAI HP2020-2:** Reduce invasive methicillin-resistant staphylococcus aureus (MRSA) infections.

**Rate of Invasive Methicillin-Resistant Staphylococcus Aureus (MRSA) Infections, Nye County and Nevada, 2000 - 2008.\***



The rate of invasive methicillin-resistant staphylococcus aureus (MRSA) infection declined in Nye County from 2005-2008, while the state rate of infection increased during those years to approach 100 per 100,000 population in 2008.

This is a new objective for Healthy People 2020, with a target rate of 6.56 infections per 100,000 population. Neither the state nor Nye County approached this new goal. In 2008 Nye County still had a rate more than nine times higher than the Healthy People 2020 target.

\*These rates are age-adjusted to the 2000 U.S. standard population. Nevada data are from the Nevada Inpatient Hospital Discharge Database (NIHDD).

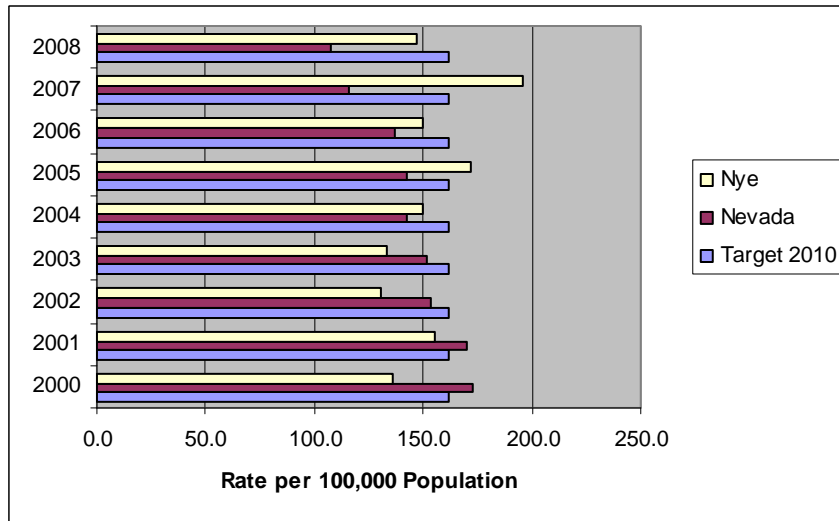


# Heart Disease and Stroke

**Healthy People 2010 Objective (12-1):** Reduce coronary heart disease deaths.

**Healthy People 2020 Objective HDS HP2020-2:** Reduce coronary heart disease deaths.

**Age-Adjusted Coronary Heart Disease Death Rate, Nye County and Nevada, 2000 - 2008.\***



In 2009, both Nye County and Nevada met the Healthy People 2010 target rate of 162 per 100,000 population for coronary heart disease mortality.

The state rate declined, and the county rate increased from 2000 to 2008.

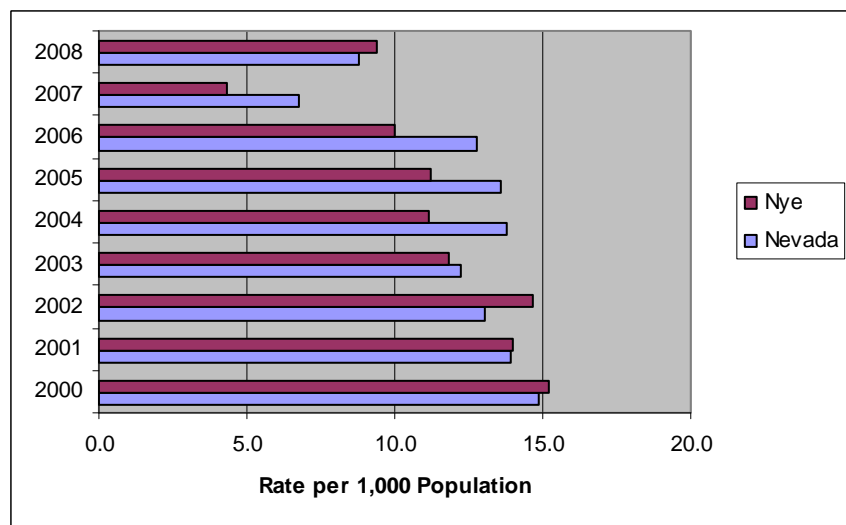
\*These rates are age-adjusted to the 2000 U.S. standard population. The Nevada data are from Nevada Vital Statistics Records. Note: 2007 and 2008 are not final and are subject to change.

**Healthy People 2010 Objective (12-6.):** Reduce the rate hospitalizations of older adults aged 65 years and older with congestive heart failure.

**Hospitalization Rate of Older Adults Aged 65 Years and Older With Congestive Heart Failure, Nye County and Nevada, 2000 - 2008.\***

From 2000 to 2008, both Nye County and Nevada reported lower hospitalization rates for older adults, ages 65 years and older, with congestive heart failure.

In 2008, Nye County's rate more than doubled from what it was in 2007.

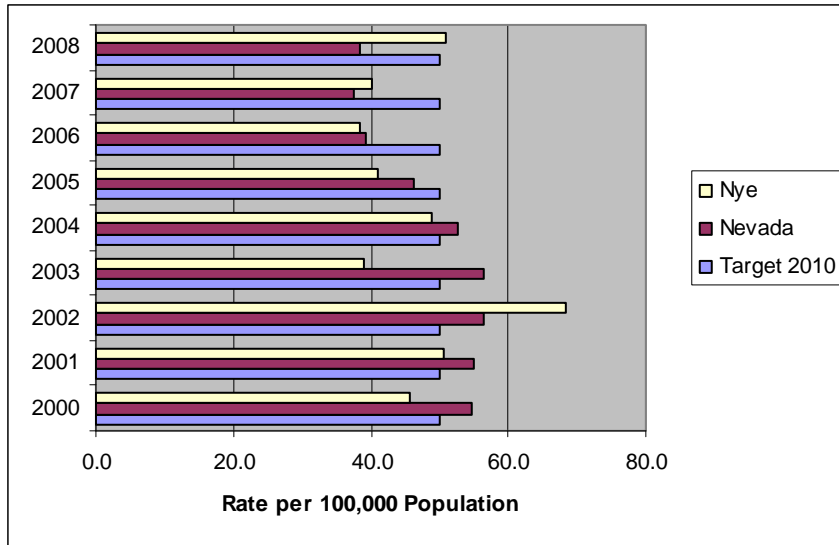


\*The Nevada data are from Nevada Inpatient Hospital Discharge (NIHDD).

**Healthy People 2010 Objective (12-7):** Reduce stroke deaths.

**Healthy People 2020 Objective HDS HP2020-3:** Reduce stroke deaths.

**Age-Adjusted Stroke Death Rate, Nye County and Nevada, 2000 - 2008.\***



Every year except 2002 and 2008, Nye County met the Healthy People 2010 target rate of 50 stroke deaths per 100,000 population.

The state trend decreased since 2003, while the county trend fluctuated from 2000-2008.

\*These rates are age-adjusted to the 2000 U.S. standard population. The Nevada data are from Nevada Vital Statistics Records. Note: 2007 and 2008 are not final and are subject to change.

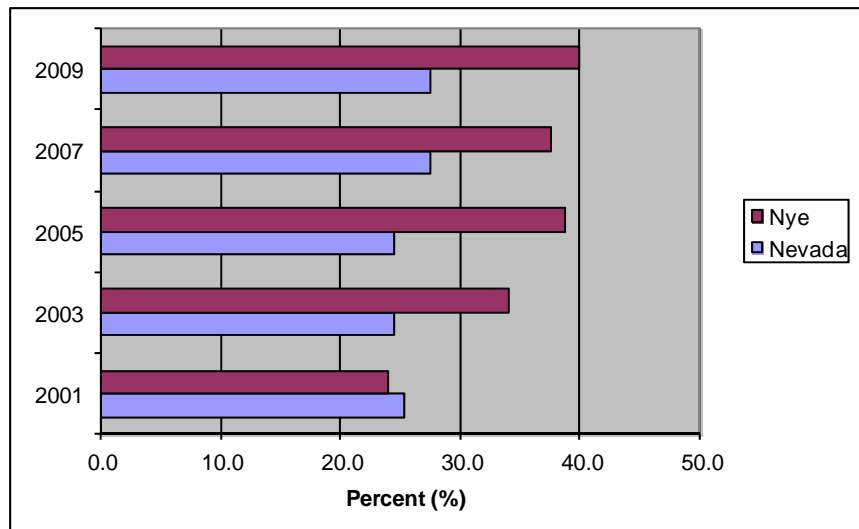
**Healthy People 2010 Objective (12-9a.):** Reduce the proportion of adults with high blood pressure.

**Healthy People 2020 Objective HDS HP2020-5.1:** Reduce the proportion of adults with hypertension.

**Proportion of Adults with High Blood Pressure, Nye County and Nevada, BRFSS Data, 2001, 2003, 2005, 2007, 2009.\***

Nye County had a higher percentage of adults with high blood pressure than Nevada.

This rate increased in Nye County from 2001-2009. It almost three times as high as the Healthy People 2010 goal of 14 percent.

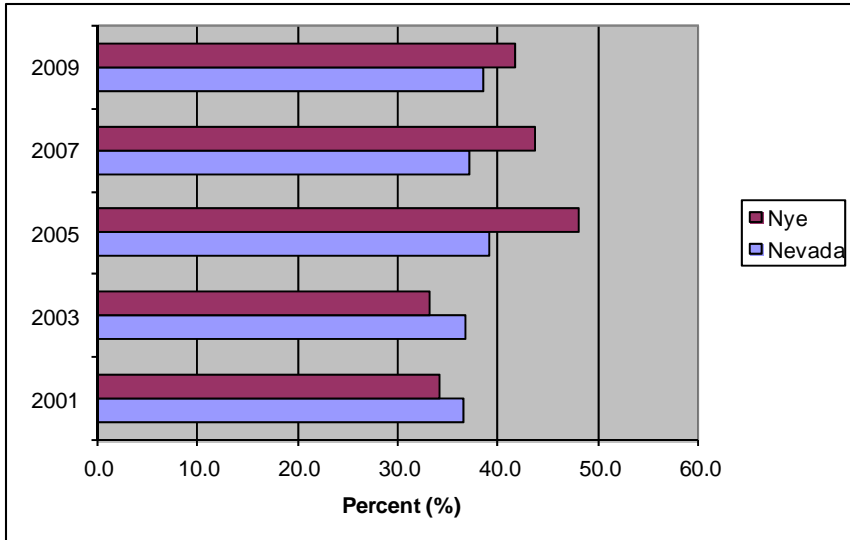


\*These percentages are weighted to survey population characteristics. Not all counties were included in the survey results.

**Healthy People 2010 Objective (12-14):** Reduce the proportion of adults with high blood cholesterol levels.

**Healthy People 2020 Objective HDS HP2020-7:** Reduce the proportion of adults with high blood cholesterol levels.

**Proportion of Adults with High Cholesterol Levels, Nye County and Nevada, BRFSS Data, 2001, 2003, 2005, 2007, 2009.\***



According to the Behavioral Risk Factor Surveillance System data for the study years 2001-2009, Nye County saw an increase in the number of adults with high cholesterol levels.

In 2009, the county rate was two and a half times higher than the Healthy People 2010 target of 17 percent.

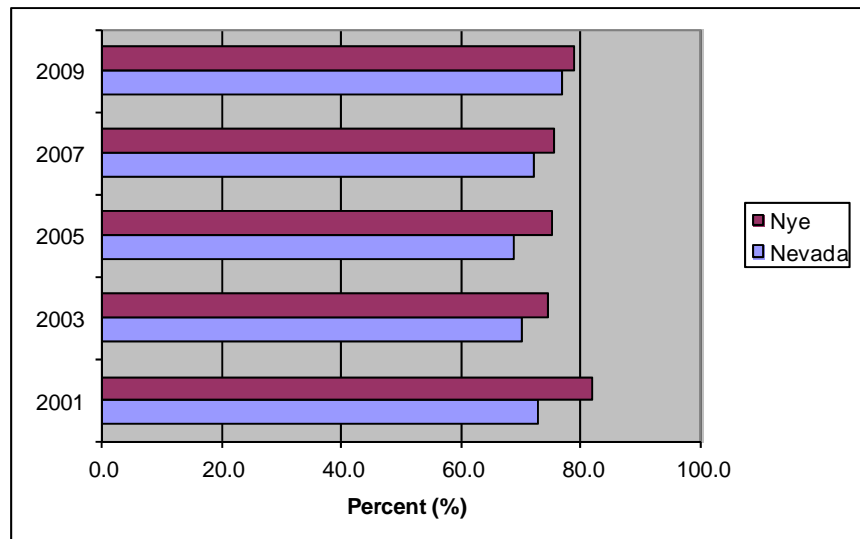
**Healthy People 2010 Objective (12-15):** Increase the proportion of adults having had their blood cholesterol checked within the preceding 5 years.

**Healthy People 2020 Objective HDS HP2020-6:** Increase the proportion of adults having had their blood cholesterol checked within the preceding 5 years.

**Proportion of Adults Having Their Blood Cholesterol Checked Within the Preceding 5 Years, Nye County and Nevada, BRFSS Data, 2001, 2003, 2005, 2007, 2009.\***

The percentage of Nye County adults having their blood cholesterol checked within the last five years was consistently higher than the state rate from 2001-2009.

Both rates increased from 2003-2009 and did not meet the Healthy People 2010 goal of 80 percent during these years.



\*These percentages are weighted to survey population characteristics. Not all counties were included in the survey results.

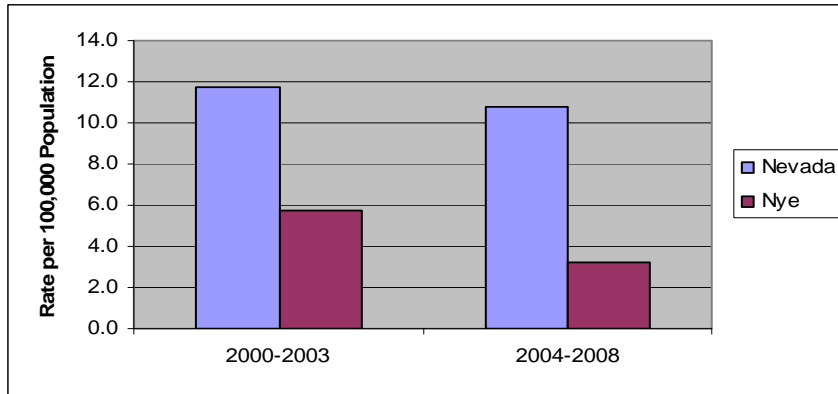
# Human Immunodeficiency Virus (HIV)

**Healthy People 2010 Objective (13-1):** Reduce AIDS among adults and adolescents.

**Healthy People 2020 Objective HIV HP2020-1:** Reduce acquired immune deficiency syndrome (AIDS) among adults and adolescents.

NOTE: This objective was removed from the final HP 2020 release.

**Aggregated Reported AIDS Cases, Nye County and Nevada, 2000 - 2003 and 2004 - 2008.\***



Reported AIDS cases declined in both Nye County and Nevada from 2000-2008.

Both were still above the Healthy People 2010 target rate of 1.0 per 100,000 population.

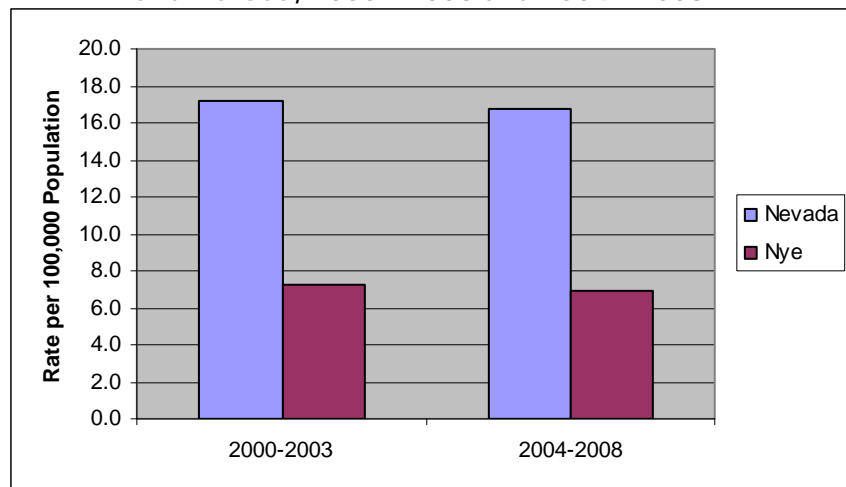
**Healthy People 2010 Objective (13-5):** Reduce the number of new cases of human immunodeficiency virus (HIV) and acquired immune deficiency syndrome (AIDS) diagnosed among adults and adolescents.

**Healthy People 2020 Objective HIV HP2020-4:** Reduce the number of new AIDS cases among adults and adolescents.

**Aggregated Reported New Cases of HIV/AIDS, Nye County and Nevada, 2000 - 2003 and 2004 - 2008.\***

On aggregate from 2000—2008, the number of reported new cases of HIV/AIDS declined slightly for both the state and Nye County.

Nye County consistently met the Healthy People 2010 target rate of 13 new HIV/AIDS cases per 100,000 population.

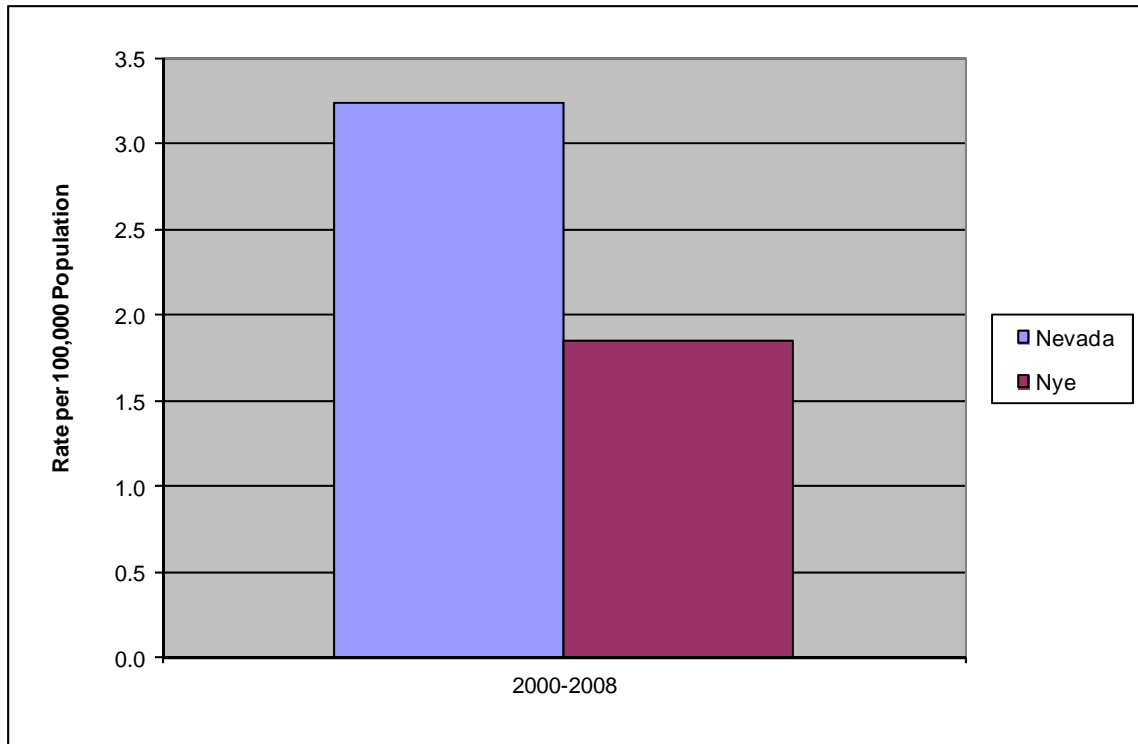


\*The Nevada data are from the Enhanced HIV/AIDS Reporting System (eHARS).

**Healthy People 2010 Objective (13-14):** Reduce the deaths from HIV infection.

**Healthy People 2020 Objective HIV HP2020-12:** Reduce deaths from HIV infection.

**Aggregated Age-Adjusted HIV Infection Death Rate, Nye County and Nevada, 2000 - 2008.\***



The HIV infection mortality rate averaged lower in Nye County than the state on aggregate from 2000-2008. Nye County's rate was still more than two and a half times the Healthy People 2010 target of .7 deaths per 100,000 population.

\*These rates are age-adjusted to the year 2000 U.S. standard population. The Nevada data is from the Nevada Vital Statistics Records.

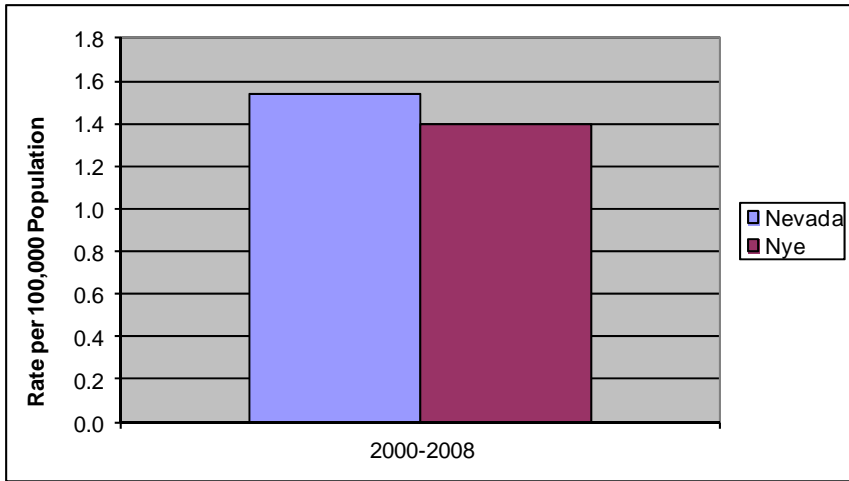
Note: 2007 and 2008 data are not final and are subject to change.

# Immunization and Infectious Diseases

**Healthy People 2010 Objective (14-6.):** Reduce new cases of Hepatitis A.

**Healthy People 2020 Objective IID HP2020-23:** Reduce Hepatitis A.

**Aggregated Rate of Reported New Cases of Hepatitis A, Nye County and Nevada, NEDSS Data, 2000 - 2008.\***



The aggregated rate of reported new cases of hepatitis A in Nye County was lower than the state over the years 2000—2008.

Both the state and the county met the Healthy People 2010 target rate of 4.3 new cases per 100,000 population.

\*The Nevada and U.S. data are from the National Electronic Telecommunications System for Surveillance (NEDSS).

**Healthy People 2010 Objective (14-17):** Reduce hospitalization caused by peptic ulcer disease in the United States.

**Healthy People 2020 Objective IID HP2020-10:** Reduce hospitalization caused by peptic ulcer disease in the United States.

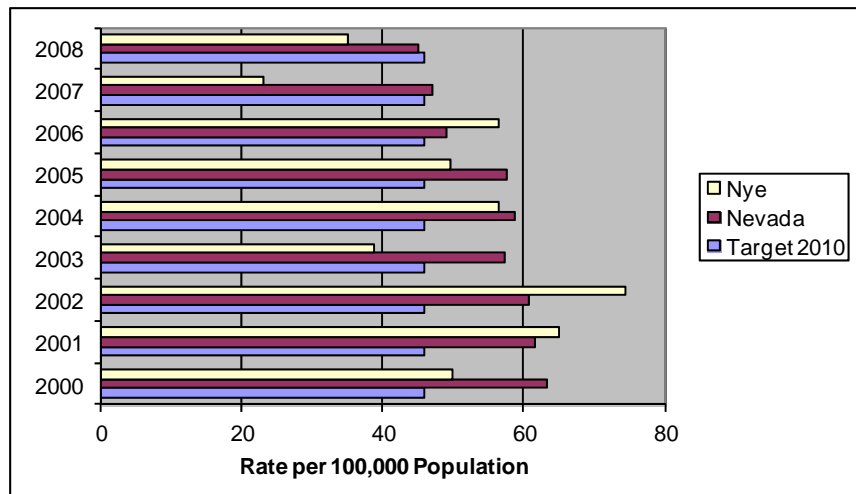
NOTE: This objective was removed in the final HP 2020 release.

During the years 2000 to 2008, the rate of hospitalizations for peptic ulcer disease fluctuated for Nye County and decreased for the state.

Both the state and the county met the Healthy People 2010 target rate of 46 per 100,000 population in 2008.

Nye County also met the target in 2003 and 2007.

**Age-Adjusted Rate of Hospitalizations for Peptic Ulcer Disease, Nye County and Nevada, 2000 - 2008.\***

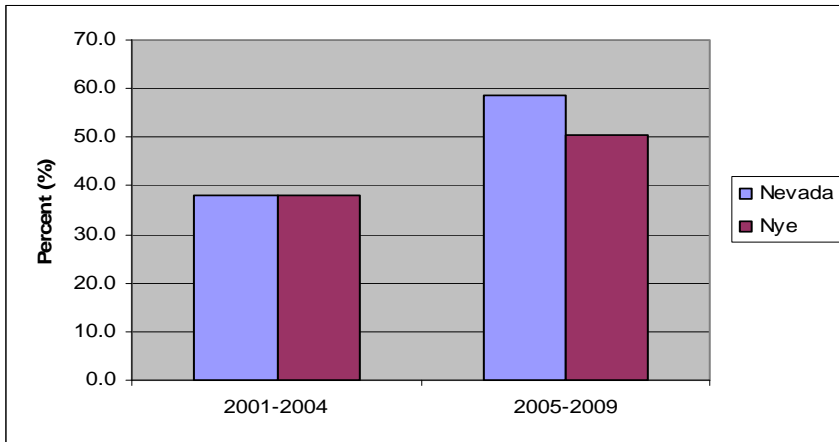


\*These rates are age-adjusted to the 2000 U.S. standard population. The Nevada data are from the National Electronic Telecommunications System for Surveillance (NEDSS).

**Healthy People 2010 Objective (14-29a.):** Increase the proportion of adults, aged 65 years and older, who are vaccinated annually against influenza.

**Healthy People 2020 Objective IID HP2020-12.7:** Increase the proportion of non-institutionalized adults, aged 65 years and older, who are vaccinated annually against seasonal influenza.

**Aggregated Proportion of Adults Aged 65 Years and Older Who Are Vaccinated Against Influenza, Nye County and Nevada, BRFSS Data, 2001 - 2004 and 2005 - 2009.\***



The rate of adults, ages 65 years and older, who are vaccinated against influenza was even at 38 percent for Nevada and Nye County during 2001—2004.

In 2005—2009, the state rate surpassed the county rate, both rates increased from 2004-2009. Neither the state nor the county met the Healthy People 2010 goal of 90 percent.

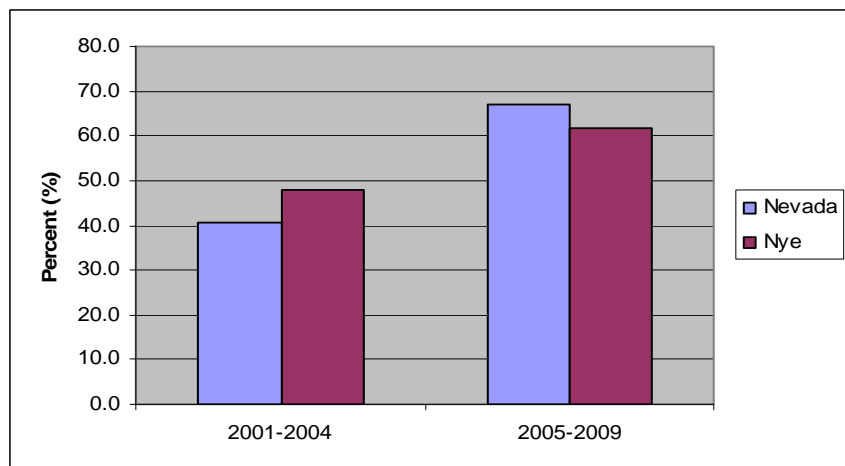
**Healthy People 2010 Objective (14-29b.):** Increase the proportion of adults, aged 65 years and older, who have ever received the pneumococcal vaccine.

**Healthy People 2010 Objective IID HP 2020-13.1:** Increase the proportion of non-institutionalized adults, aged 65 years and older, who are vaccinated against pneumococcal disease.

The percentage of adults, ages 65 years and older, who have ever received an pneumococcal vaccine, increased for both the state and Nye County during the reported years.

The Healthy People 2010 objective of 90 percent was not met by either the state or the county.

**Aggregated Proportion of Adults Aged 65 Years and Older Who Have Ever Received the Pneumococcal Vaccine, Nye County and Nevada, BRFSS Data, 2001 - 2004 and 2005 - 2009 -**



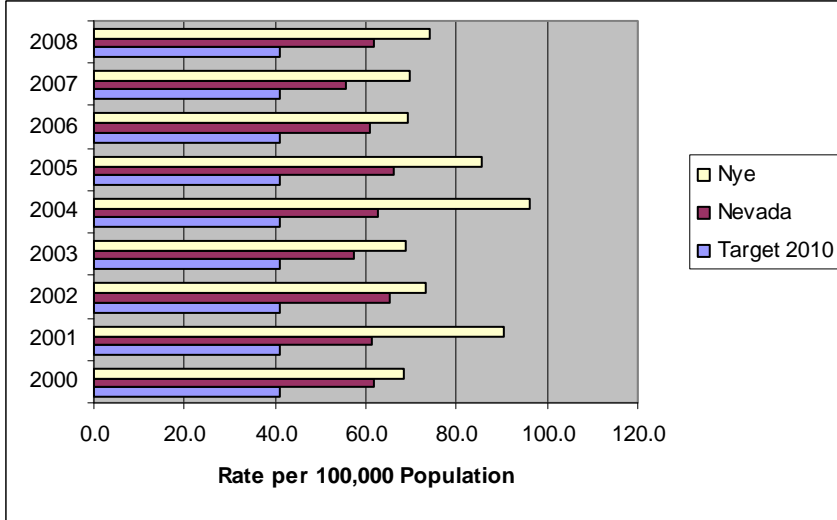
\*These percentages are weighted to survey population characteristics. Not all counties were included in the survey results.

# Injury and Violence Prevention

**Healthy People 2010 Objective (15-1):** Reduce hospitalizations for nonfatal head injuries.

**Healthy People 2020 Objective IVP HP2020-2.2:** Reduce hospitalizations for nonfatal traumatic brain injuries.

**Hospitalization Rate for Nonfatal Head Injuries, Nye County and Nevada, 2000 - 2008.\***



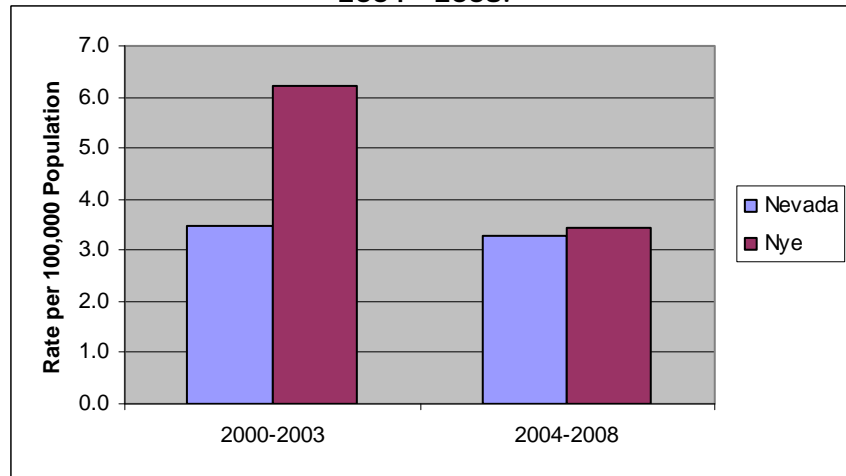
From 2000-2008, the hospitalization rate for nonfatal head injuries fluctuated for both Nye County and the state. Neither the state nor Nye County met the Healthy People 2010 target rate of 41.2 per 100,000 population.

**Healthy People 2010 Objective (15-2):** Reduce hospitalizations for nonfatal spinal cord injuries.

**Healthy People 2020 Objective IVP HP2020-3:** Reduce fatal and nonfatal traumatic spinal cord injury morbidity and mortality.

**Aggregated Hospitalization Rate for Nonfatal Spinal Cord Injuries, Nye County and Nevada, 2000 - 2003 and 2004 - 2008.\***

The hospitalization rate for nonfatal spinal cord injuries decreased from 2000-2008 for both Nevada and Nye County. Neither met the Healthy People 2010 target rate of 2.4 per 100,000 population.



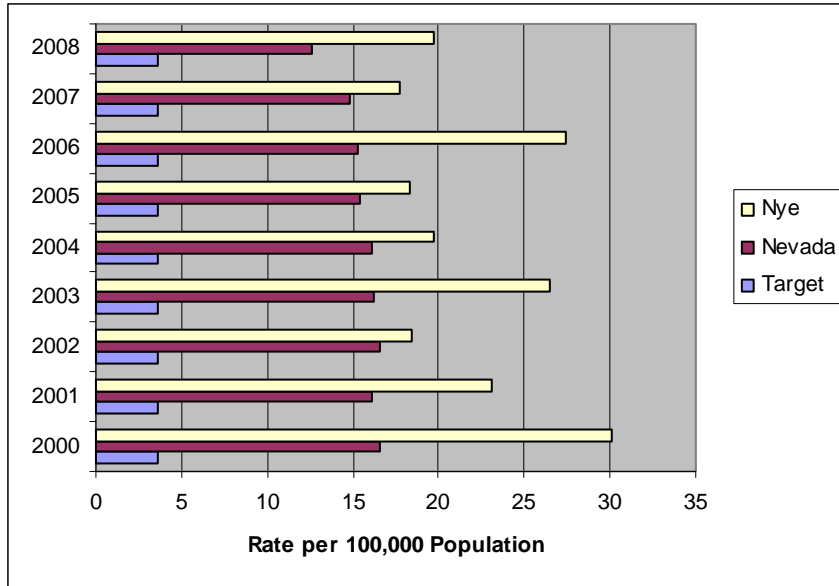
\*The Nevada data are from the Nevada Inpatient Hospital Discharge Database (NIHDD).



**Healthy People 2010 Objective (15-3):** Reduce firearm related deaths.

**Healthy People 2020 Objective IVP HP2020-30:** Reduce firearm related deaths.

**Age-Adjusted Firearm Related Death Rate, Nye County and Nevada, 2000 - 2008.\***



The rate of firearm related deaths decreased for the state and fluctuated for Nye County from 2000-2008.

Neither the state, nor Nye County, reached the Healthy People 2010 target rate of 3.6 deaths per 100,000 population.

Nye County was consistently at least four times as high as the Healthy People 2010 target each year.

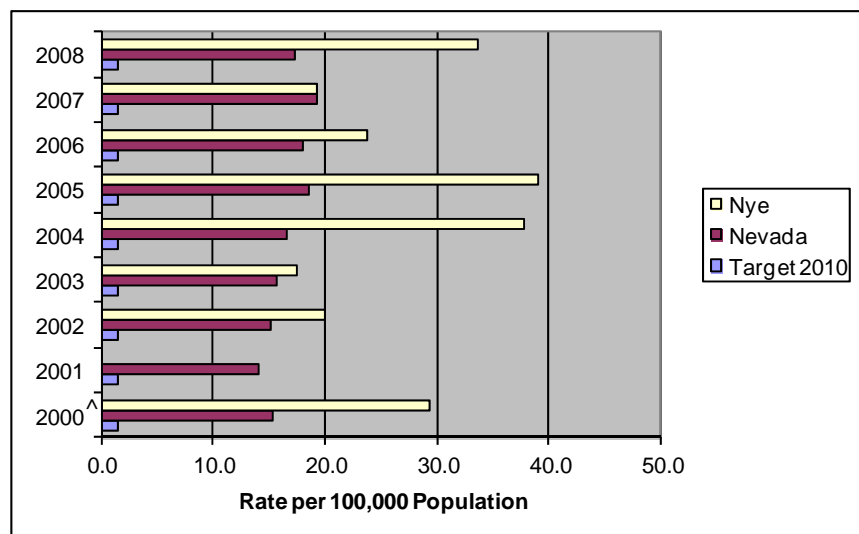
**Healthy People 2010 Objective (15-8):** Reduce deaths caused by poisonings.

**Healthy People 2020 Objective IVP HP2020-9:** Prevent an increase in the rate of poisoning deaths.

The poisoning mortality rate for both Nevada and Nye County fluctuated from 2000 -2008. Neither the state nor Nye County attained the Healthy People 2010 target rate of 1.5 deaths per 100,000 population.

The county rate was consistently more than five times the Healthy People 2010 target every year. In 2005 it was twenty-six times the goal.

**Age-Adjusted Death Rate Caused by Poisoning, Nye County and Nevada, 2000 - 2008.\***



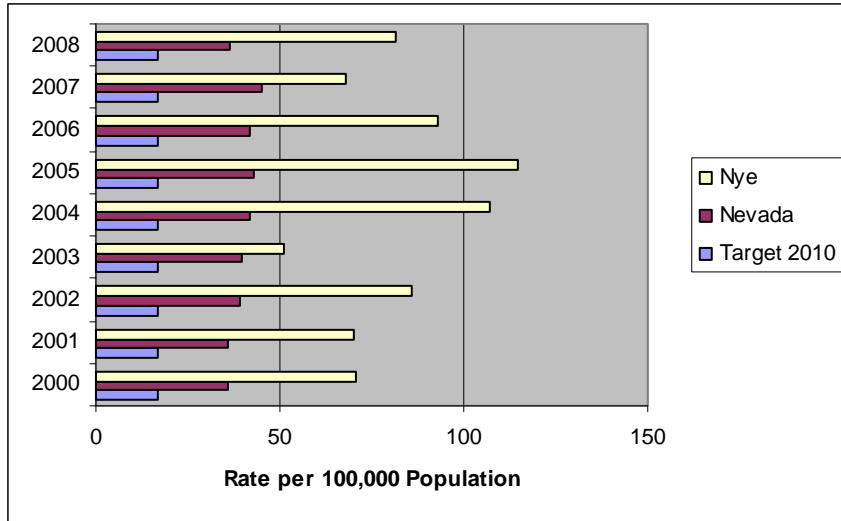
^ 2001 data are not available for Nye County due to small counts.

\*These rates are age-adjusted to the 2000 U.S. standard population. The Nevada data are from Nevada Vital Statistics Records. Note: 2007 and 2008 data are not final and are subject to change.

**Healthy People 2010 Objective (15-13):** Reduce deaths caused by unintentional injuries.

**Healthy People 2020 Objective IVP HP2020-11:** Reduce unintentional injury deaths.

**Age-Adjusted Death Rate Caused by Unintentional Injuries, Nye County and Nevada, 2000 - 2008.\***



The mortality rate for unintentional injuries fluctuated for both the state and Nye County from 2000-2008. Neither the state nor Nye County reached the Healthy People 2010 objective rate of 17.1 deaths per 100,000 population.

The county rate was more than three times higher than the Healthy People 2010 target each year.

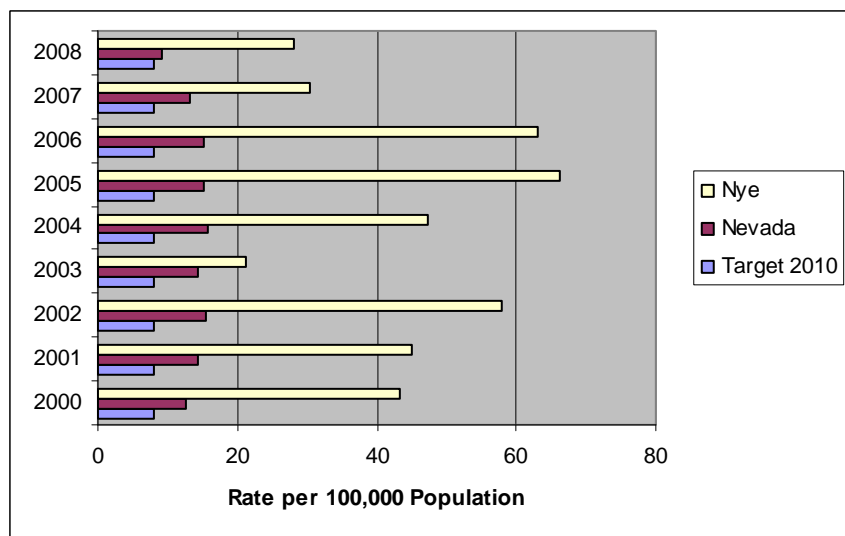
**Healthy People 2010 Objective (15-15a.):** Reduce deaths caused by motor vehicle crashes.

**Healthy People 2020 Objective IVP HP2020-13:** Reduce motor vehicle crash-related deaths.

The motor vehicle crash mortality rate fluctuated for both Nye County and Nevada from 2000-2008. Neither Nevada nor the county met the Healthy People 2010 target of 8.0 deaths per 100,000 population.

Nye County's rate was consistently between 2.6 and 8.1 times higher than the Healthy People 2010 objective every year.

**Age-Adjusted Death Rate Caused by Motor Vehicle Crashes, Nye County and Nevada, 2000 - 2008.\***

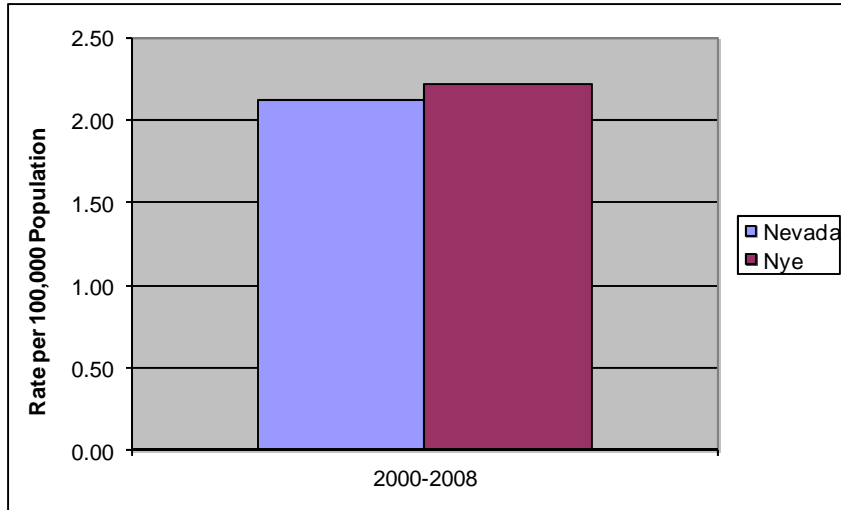


\*These rates are age-adjusted to the 2000 U.S. standard population. The Nevada data are from Nevada Vital Statistics Records. Note: 2007 and 2008 data are not final and are subject to change.

**Healthy People 2010 Objective (15-16):** Reduce pedestrian deaths on public roads.

**Healthy People 2020 Objective IVP HP2020-18:** Reduce pedestrian deaths on public roads.

**Aggregated Age-Adjusted Pedestrian Death Rate on Public Roads, Nye County and Nevada, 2000 - 2008.\***



The rate of pedestrian mortality on public roads was higher in Nye County on average than the state during the years 2000 to 2008.

Both Nevada and Nye County had rates higher than the Healthy People 2010 target rate of 1.4 deaths per 100,000 population.

\*These rates are age-adjusted to the 2000 U.S. standard population. The Nevada data are from Nevada Vital Statistics Records. Note: 2007 and 2008 data are not final and are subject to change.

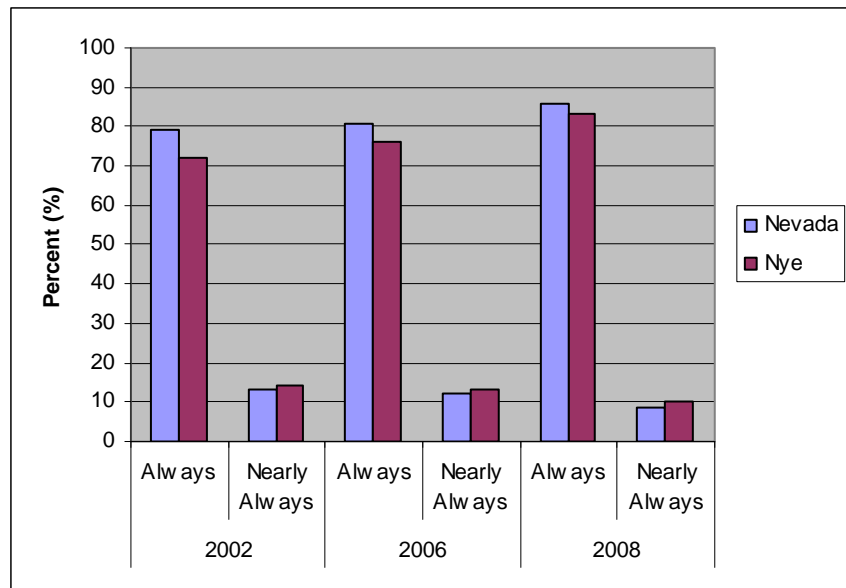
**Healthy People 2010 Objective (15-19):** Increase the use of safety belts.

**Healthy People 2020 Objective IVP HP2020-15:** Increase use of safety belts.

**Proportion of People Using Safety Belts, Nye County and Nevada, BRFSS Data, 2002, 2006, 2008.\***

The percentage of people always using safety belts increased in both Nye County and Nevada from 2002 to 2008.

In 2008, the percentage of people reporting that they "always" or "nearly always" used safety belts met the Healthy People 2010 objective of 89 percent in both the state and the county.

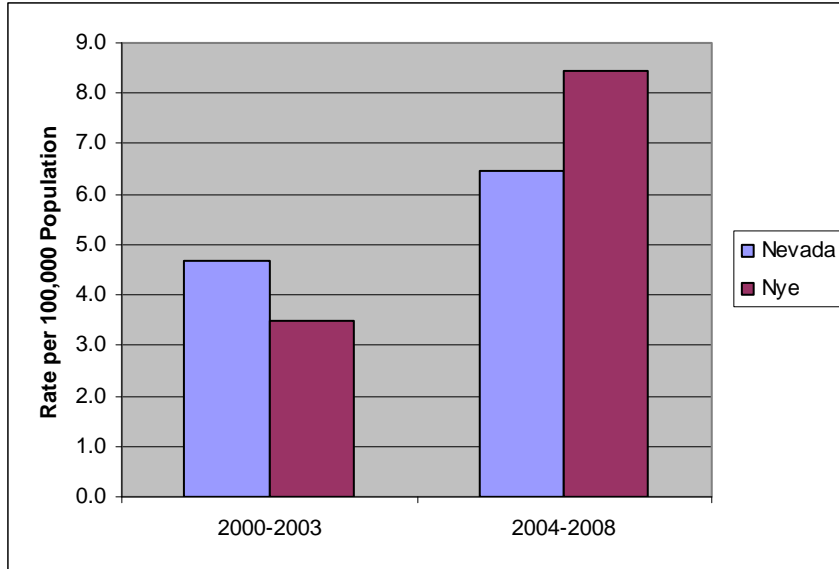


\*These percentages are weighted to survey population characteristics. Not all counties were included in the survey results.

**Healthy People 2010 Objective (15-27):** Reduce deaths from falls.

**Healthy People 2020 Objective IVP HP2020–26a:** Reduce fall-related deaths.

**Aggregated Age-Adjusted Death Rate From Falls, Nye County and Nevada, 2000 - 2003 and 2004 - 2008.\***



On average from 2000-2008, the fall mortality rate increased for both Nevada and Nye County. The Nye County rate more than doubled over that period.

In the most recent data from 2004-2008, both the state and the county rates were twice as high as the Healthy People 2010 target rate of 3.3 deaths per 100,000 population.

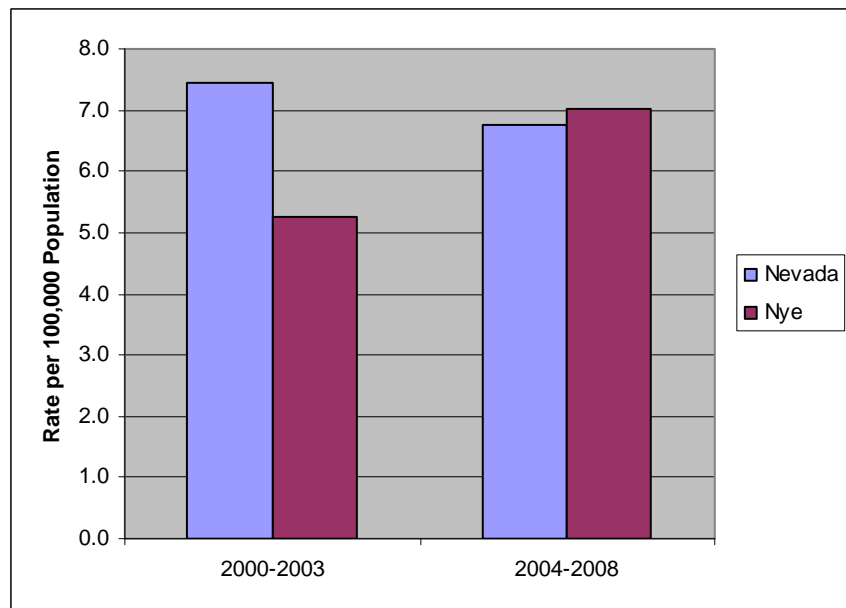
**Healthy People 2010 Objective (15-32):** Reduce homicides.

**Healthy People 2020 Objective IVP HP2020-2:** Reduce homicides.

**Aggregated Age-Adjusted Death Rate from Homicides, Nye County and Nevada, 2000 - 2003 and 2004 - 2008.\***

During the years 2000—2008, the homicide mortality rate for Nevada declined, while the rate for Nye County increased.

From 2004-2008, both Nevada and Nye County rates were twice as high as the Healthy People 2010 target rate of 2.8 deaths per 100,000 population.



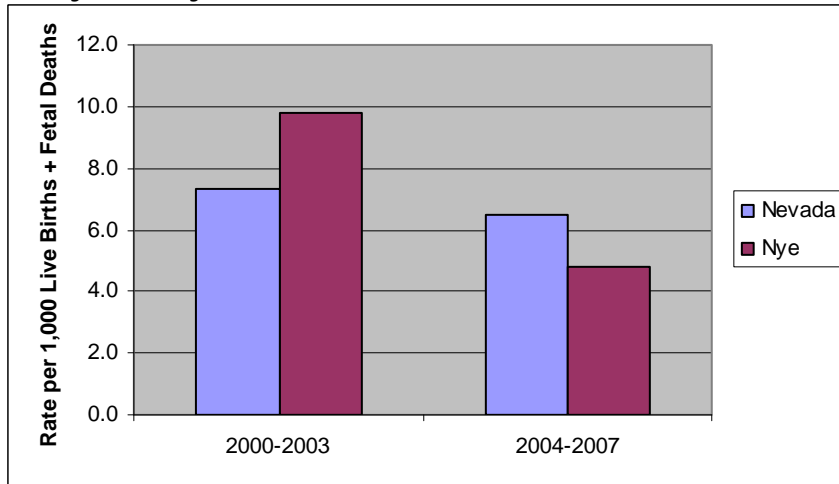
\*These rates are age-adjusted to the 2000 U.S. standard population. The Nevada data are from Nevada Vital Statistics Records. Note: 2007 and 2008 data are not final and are subject to change.

# Maternal, Infant, Child Health

**Healthy People 2010 Objective (16-1a.):** Reduce fetal deaths at 20 or more weeks gestation.

**Healthy People 2020 Objective MICH HP2020-1.1:** Reduce fetal deaths at 20 more weeks of gestation.

**Aggregated Fetal Deaths at 20 or More Weeks of Gestation, Nye County and Nevada, 2000 - 2003 and 2004 - 2007.\***



Fetal deaths at 20 or more weeks of gestation, declined for both Nevada and Nye County during the years 2000—2007.

On average from 2004-2007, Nye County nearly met the Healthy People 2010 target rate of 4.1 fetal deaths per 1,000 live births and fetal deaths.

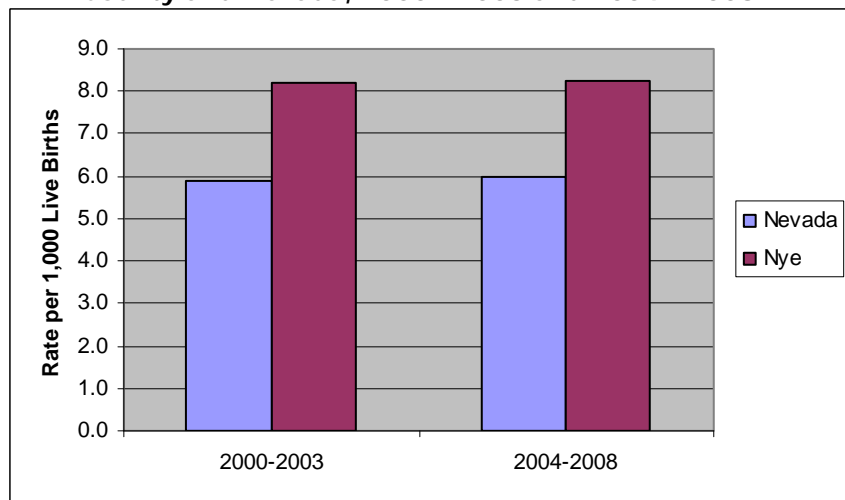
**Healthy People 2010 Objective (16-1c.):** Reduce infant death rate (within 1 year of life).

**Healthy People 2020 Objective MICH HP2020-1.3:** Reduce infant death rate (within 1 year of life).

**Aggregated Infant Death Rate (Within 1 Year of Life), Nye County and Nevada, 2000 - 2003 and 2004 - 2008.\***

The infant mortality rate, within one year of life, remained steady for both the state and Nye county from 2000-2008.

Both the state and the county rates are higher than the Healthy People 2010 target rate of 4.5 per 100,000 population.

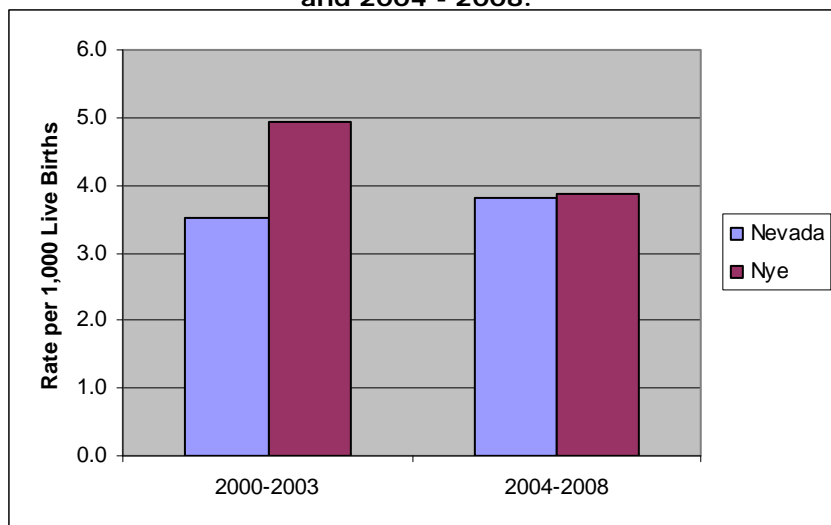


\*The Nevada data are from Nevada Vital Statistics Records. The U.S. data are from the National Vital Statistics System - Mortality.  
 Note: 2008 data are not final and are subject to change.

**Healthy People 2010 Objective (16-1d.):** Reduce neonatal deaths (within the first 28 days of life).

**Healthy People 2020 Objective MICH HP2020-1.4:** Reduce neonatal deaths (within the first 28 days of life).

**Aggregated Neonatal Death Rate (Within the First 28 Days of Life), Nye County and Nevada, 2000 - 2003 and 2004 - 2008.\***



The neonatal mortality rate, within the first 28 days of life, increased slightly in Nevada, and declined in Nye County from 2000-2008.

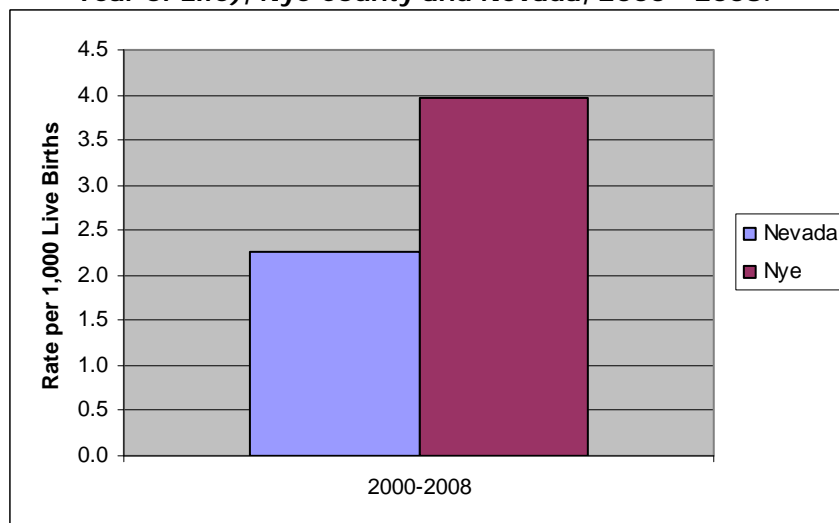
Neither Nevada nor Nye County met the Healthy People 2010 objective rate of 2.9 deaths per 1,000 live births.

**Healthy People 2010 Objective (16-1e.):** Reduce postneonatal death rate (between 28 days and 1 year).

**Healthy People 2020 Objective MICH HP2020-1.5:** Reduce postneonatal death rate (between 28 days and 1 year).

**Aggregated Postneonatal Death Rate (Between 28 Days and 1 Year of Life), Nye County and Nevada, 2000 - 2008.\***

The postneonatal mortality rate, between 28 days and one year of life, was almost twice as high in Nye County as it was in Nevada overall on average between 2000 and 2008. It was three times as high as the Healthy People 2010 target rate of 1.2 deaths per 1,000 live births.

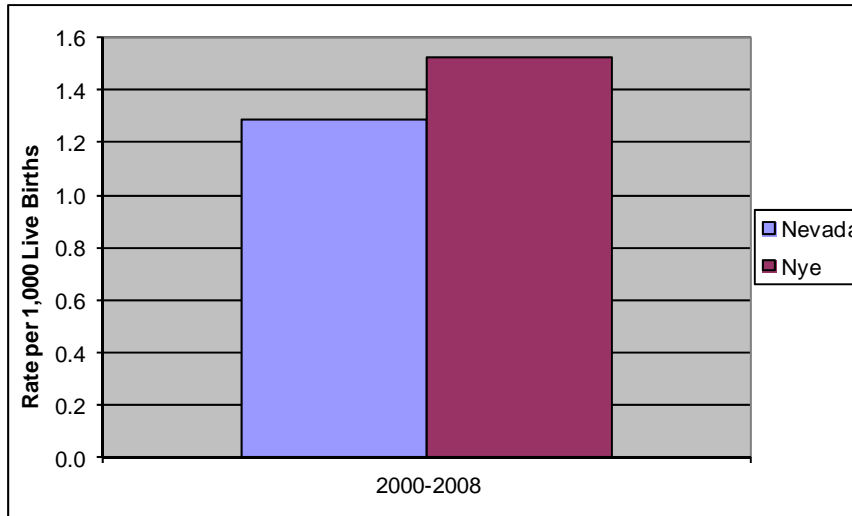


\*The Nevada data are from Nevada Vital Statistics Records. The U.S. data are from the National Vital Statistics System - Mortality.  
 Note: 2008 data are not final and are subject to change.

**Healthy People 2010 Objective (16-1f.):** Reduce infant deaths due to birth defects.

**Healthy People 2020 Objective MICH HP2020-1.6:** Reduce infant death rates related to birth defects.

**Aggregated Infant Death Rate From Birth Defects, Nye County and Nevada, 2000 - 2008.\***



The infant mortality rate from birth defects averaged higher in Nye County than the state on average between 2000-2008.

Neither the state nor the county met the Healthy People 2010 target rate of .7 deaths per 1,000 live births.

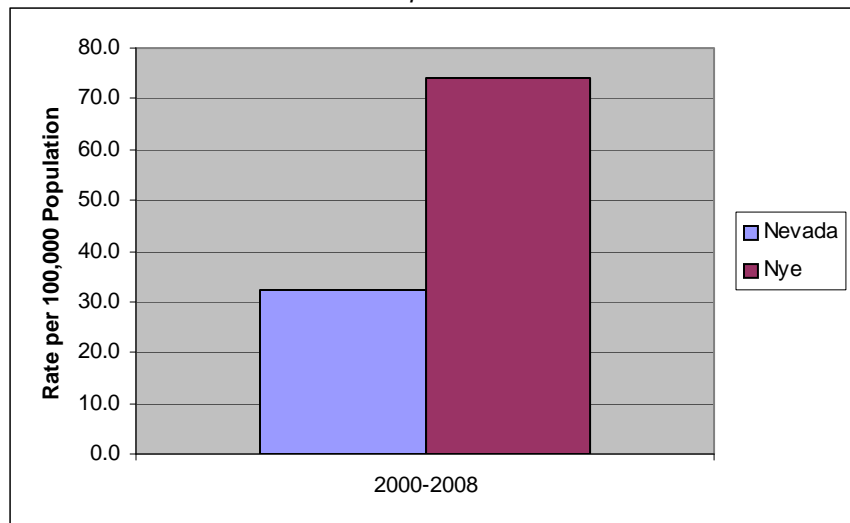
The county rate is more than twice as high as the Healthy People goal.

**Healthy People 2010 Objective (16-2a.):** Reduce the rate of child deaths, aged 1 to 4 years.

**Healthy People 2020 Objective MICH HP2020-3.1:** Reduce the rate of child deaths, aged 1 to 4 years.

**Aggregated Death Rate of Children Aged 1 to 4, Nye County and Nevada, 2000 - 2008.\***

The mortality rate for children, aged 1 to 4 years, for Nye County averaged over twice that of the state rate from 2000-2008, and more than three times the Healthy People 2010 target rate of 20 deaths per 100,000 population.

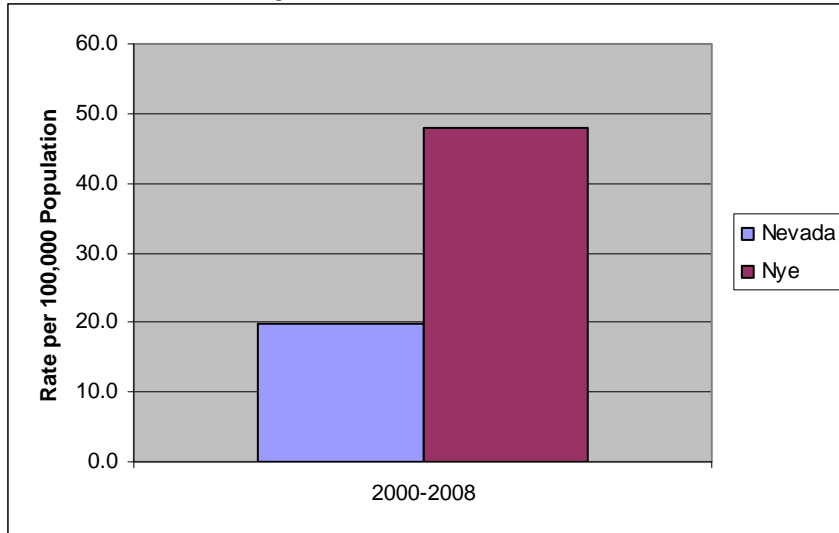


\*The Nevada data are from Nevada Vital Statistics Records. The U.S. data are from the National Vital Statistics System - Mortality.  
 Note: 2008 data are not final and are subject to change.

**Healthy People 2010 Objective (16-3a.):** Reduce the rate of adolescent deaths, aged 10 to 14 years.

**Healthy People 2020 Objective MICH HP2020-4.1:** Reduce the rate of adolescent deaths, aged 10 to 14 years.

**Aggregated Death Rate of Adolescents Aged 10 to 14, Nye County and Nevada, 2000 - 2008.\***



The mortality rate for adolescents, ages 10 to 14 years, in Nye County averaged over twice the Nevada rate from 2000-2008, and three times the Healthy People 2010 target rate of 16.5 deaths per 100,000 population.

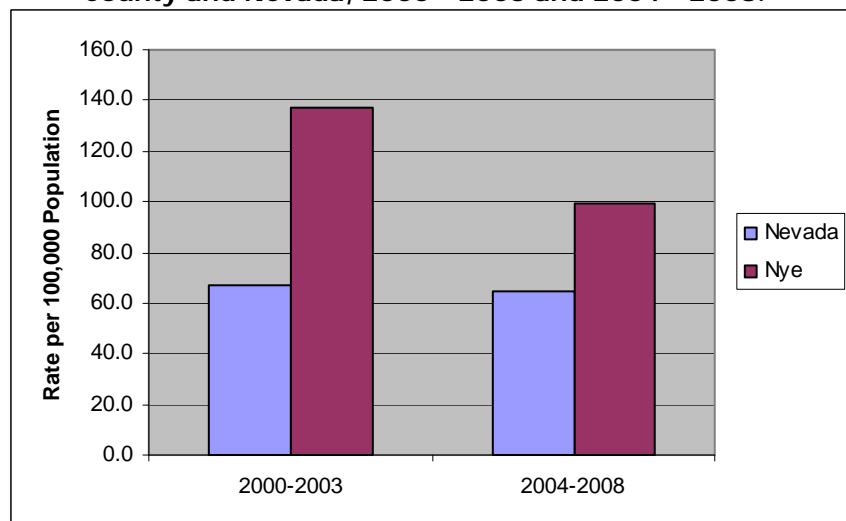
**Healthy People 2010 Objective (16-3b.):** Reduce the rate of adolescent deaths, aged 15 to 19 years.

**Healthy People 2020 Objective MICH HP2020-4.2:** Reduce the rate of adolescent deaths, aged 15 to 19 years.

**Aggregated Death Rate of Adolescents Aged 15 to 19, Nye County and Nevada, 2000 - 2003 and 2004 - 2008.\***

On average between 2000 and 2008, the mortality rate for adolescents, ages 15 to 19 years, declined for both the state and Nye County.

From 2004-2008, the county was still more than twice as high as the Healthy People 2010 target rate of 38 deaths per 100,000 population.



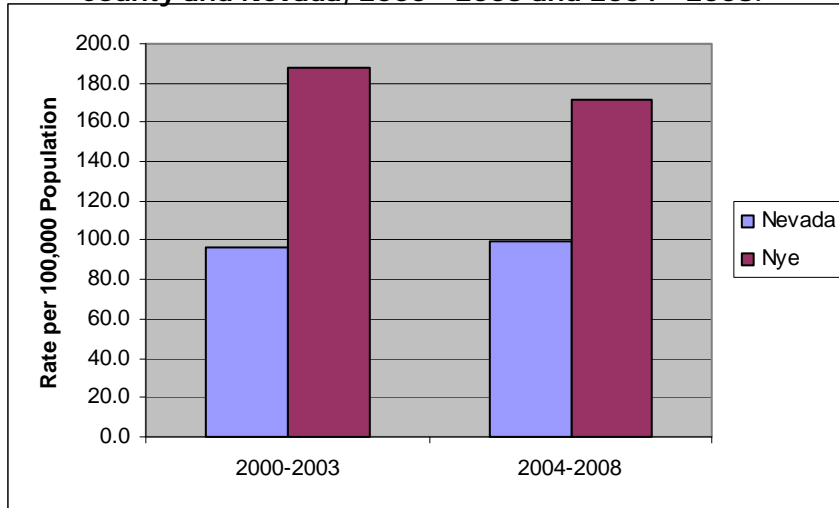
\*The Nevada data are from Nevada Vital Statistics Records. The U.S. data are from the National Vital Statistics System - Mortality.  
 Note: 2007 and 2008 data are not final and are subject to change.



**Healthy People 2010 Objective (16-3c.):** Reduce the rate of young adults deaths, aged 20 to 24 years.

**Healthy People 2020 Objective MICH HP2020-4.3:** Reduce the rate of young adults deaths, aged 20 to 24 years.

**Aggregated Death Rate of Young Adults Aged 20 to 24, Nye County and Nevada, 2000 - 2003 and 2004 - 2008.\***



On average from 2000-2008, the mortality rate of young adults, ages 20 to 24, increased slightly for Nevada, and decreased for Nye County.

From 2004-2008, the rate in Nye County was more than four times as high as the Healthy People 2010 target rate of 41.5 deaths per 100,000 population.

\*The Nevada data are from Nevada Vital Statistics Records. The U.S. data are from the National Vital Statistics System - Mortality.  
Note: 2007 and 2008 data are not final and are subject to change.

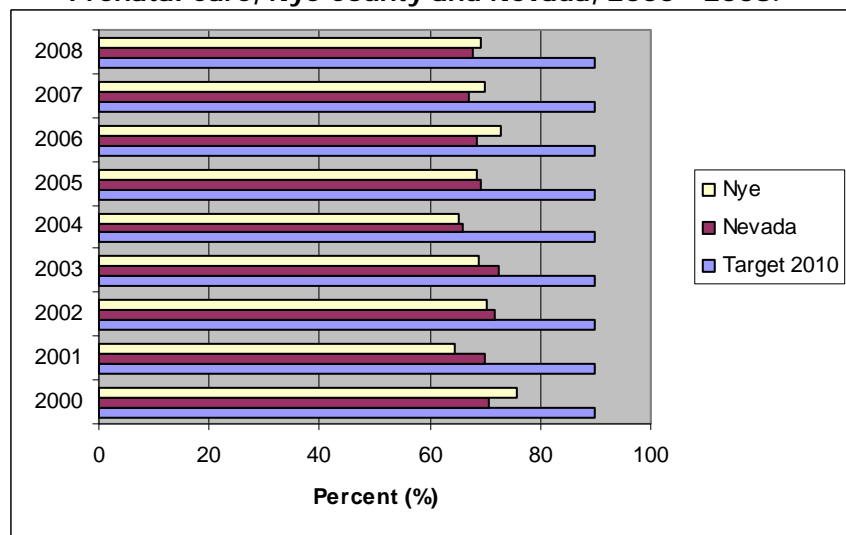
**Healthy People 2010 Objective (16-6b.):** Increase the proportion of pregnant women receiving early and adequate prenatal care.

**Healthy People 2020 Objective MICH HP2020-10:** Increase the proportion of women receiving early and adequate prenatal care.

**Proportion of Pregnant Women Receiving Early and Adequate Prenatal Care, Nye County and Nevada, 2000 - 2008.\***

The percentage of pregnant women receiving prenatal care in the first trimester of pregnancy, remained relatively stable between 64 and 72 percent for both the state and Nye County overall from 2000-2008.

Neither Nevada nor Nye County met the Healthy People 2010 goal of 90 percent.

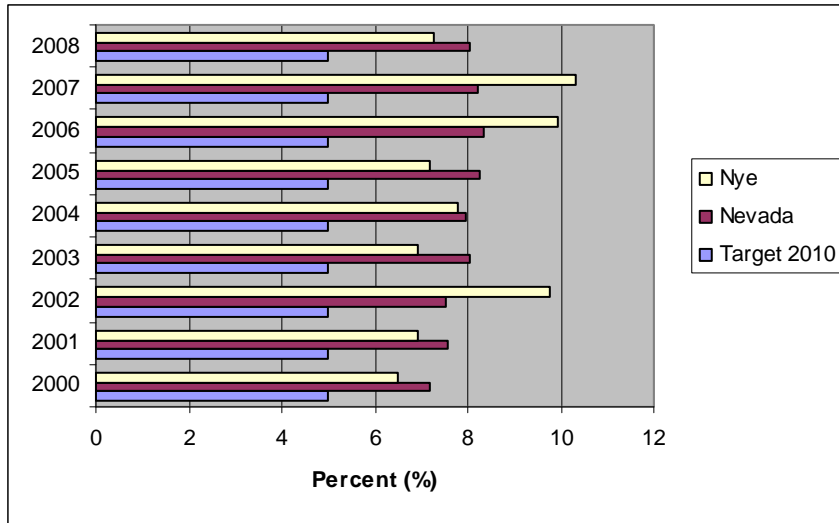


\*The Nevada data are from Nevada Vital Statistics Records. The U.S. data are from the National Vital Statistics System - Natality.  
Note: 2008 data are not final and are subject to change.

**Healthy People 2010 Objective (16-10a.):** Reduce the proportion of low birth weight infants.

**Healthy People 2020 Objective MICH HP2020-8.1:** Reduce the proportion of low birth weight infants.

**Proportion of Low Birth Weight Infants, Nye County and Nevada, 2000 - 2008.\***



Since 2000, the percentage of low birth weight infants fluctuated in Nye County and increased at the state level. Neither Nevada nor Nye County met the Healthy People 2010 goal of 5 percent.

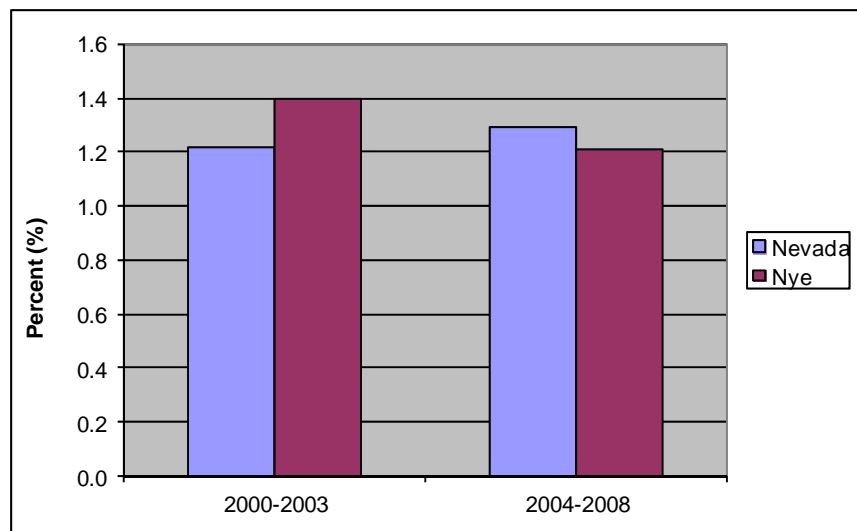
**Healthy People 2010 Objective (16-10b.):** Reduce the proportion of very low birth weight infants.

**Healthy People 2020 Objective MICH HP2020-8.2:** Reduce the proportion of very low birth weight infants.

**Aggregated Proportion of Very Low Birth Weight Infants, Nye County and Nevada, 2000 - 2003 and 2004 - 2008.\***

The percentage of very low birth weight infants increased in Nevada, and decreased in Nye County on average between 2000 and 2008.

Neither the state nor the county met the Healthy People 2010 objective of .9 percent during the study periods.

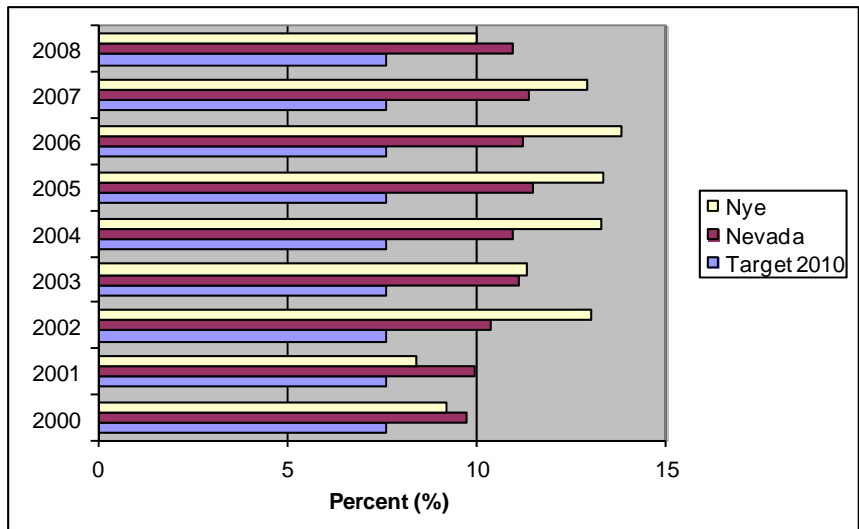


\*The Nevada data are from Nevada Vital Statistics Records. The U.S. data are from the National Vital Statistics System - Natality. Note: 2008 data are not final and are subject to change.

**Healthy People 2010 Objective (16-11a.):** Reduce preterm birth, infants born prior to 37 completed weeks of gestation.

**Healthy People 2020 Objective MICH HP2020-9.1:** Reduce total preterm births.

**Proportion of Pre-Term Births, Infants Born Prior to 37 Completed Weeks of Gestation, Nye County and Nevada, 2000 - 2008.\***



From 2000-2008, the percentage of pre-term births, infants born prior to 37 completed weeks of gestation, fluctuated for Nye County and increased at the state level.

Neither the state, nor Nye County, met the Healthy People 2010 target of 7.6 percent.

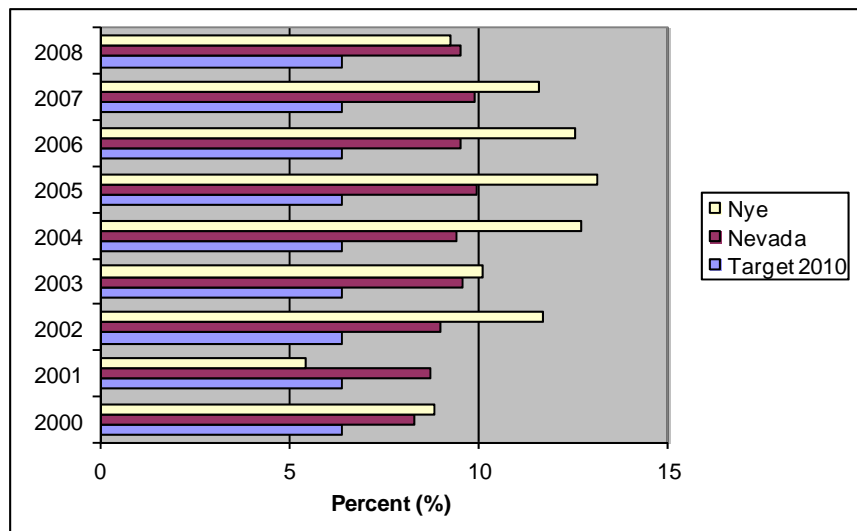
**Healthy People 2010 Objective (16-11b.):** Reduce the proportion of live births at 32 to 36 completed weeks of gestation.

**Healthy People 2020 Objective MICH HP2020-9.2:** Reduce the proportion of live births at 34 to 36 completed weeks of gestation.

**Proportion of Live Births at 32 to 36 Completed Weeks of Gestation, Nye County and Nevada, 2000 - 2008.\***

The percentage of live births at 32 to 36 completed weeks of gestation, fluctuated for both the state and Nye County this from 2000-2008.

Nye County only met the Healthy People 2010 objective of 6.4 percent in 2001.

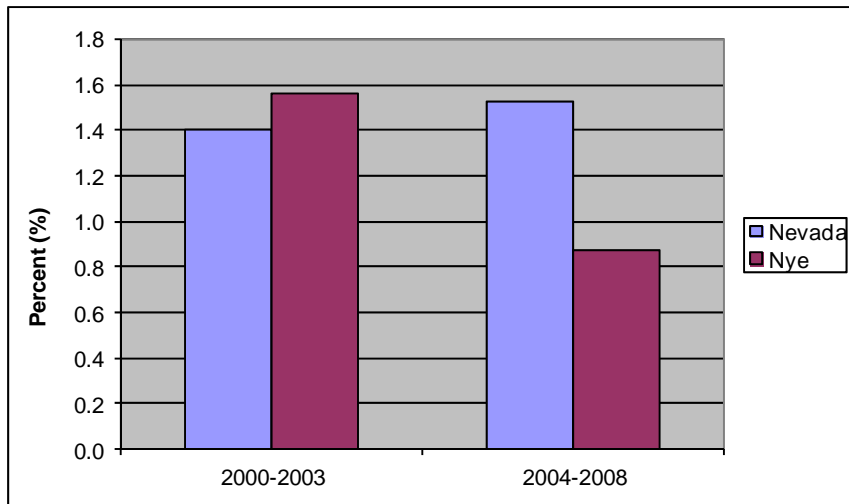


\*The Nevada data are from Nevada Vital Statistics Records. The U.S. data are from the National Vital Statistics System - Natality. Note: 2008 data are not final and are subject to change.

**Healthy People 2010 Objective (16-11c.):** Reduce the proportion of live births at less than 32 completed weeks of gestation.

**Healthy People 2020 Objective MICH HP2020-9.4:** Reduce the proportion of very preterm or live births at less than 32 completed weeks of gestation.

**Aggregated Proportion of Live Births at Less Than 32 Completed Weeks of Gestation, Nye County and Nevada, 2000 - 2003 and 2004 - 2008.\***



On average from 2000 -2008, the percentage of live births at less than 32 completed weeks of gestation, decreased for Nye County, while the state rate increased slightly during this time period.

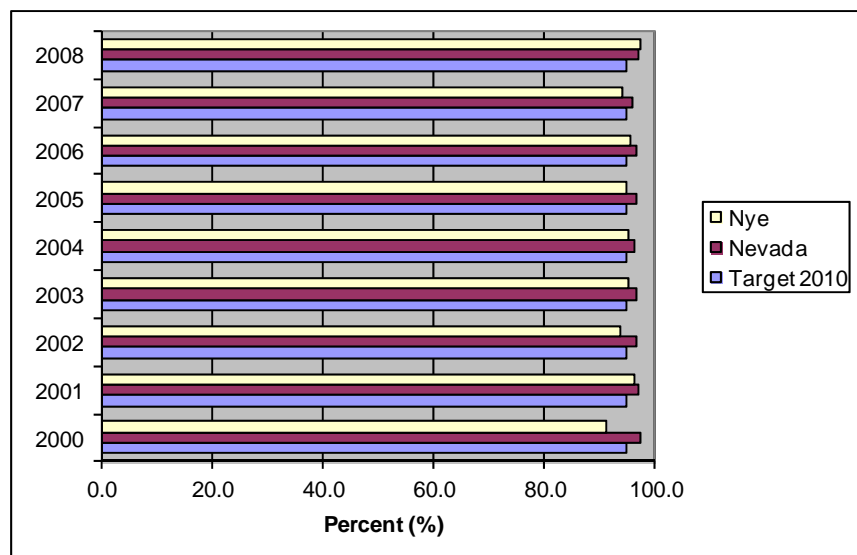
From 2004-2008, Nye County met and exceeded the Healthy People 2010 goal of 1.1 percent.

**Healthy People 2010 Objective (16-17a.):** Increase the proportion of pregnant women abstaining from alcohol.

**Healthy People 2020 Objective MICH HP2020-11.1:** Increase abstinence from alcohol among pregnant women.

**Proportion of Pregnant Women, Aged 15 to 44, Abstaining from Alcohol, Nye County and Nevada, 2000 - 2008.\***

Both the state and Nye County exceeded the Healthy People 2010 goal of 95 percent for the percentage of pregnant women abstaining from alcohol during most years from 2000 to 2008.

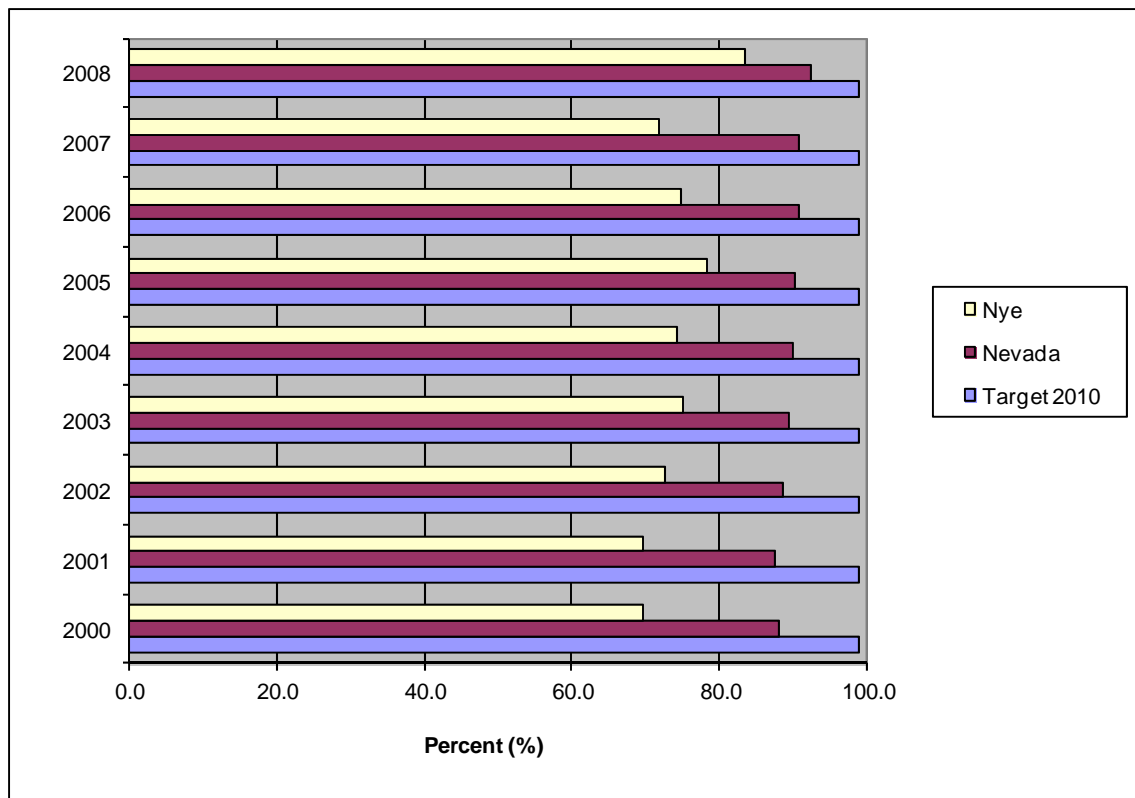


\*The Nevada data are from Nevada Vital Statistics Records. The U.S. data are from the National Vital Statistics System - Natality. Note: 2008 data are not final and are subject to change.

**Healthy People 2010 Objective (16-17c.):** Increase the proportion of pregnant women, aged 15-44 years, abstaining from cigarette smoking.

**Healthy People 2020 Objective MICH HP2020-11.3:** Increase abstinence from cigarettes among pregnant women.

**Proportion of Pregnant Women Abstaining from Tobacco, Nye County and Nevada, 2000 - 2008.\***



Neither Nevada nor Nye County attained the Healthy People 2010 objective of 99 percent for the proportion of pregnant women abstaining from tobacco from 2000 -2008. Both the state and Nye County improved these rates in 2008 as compared to 2000.

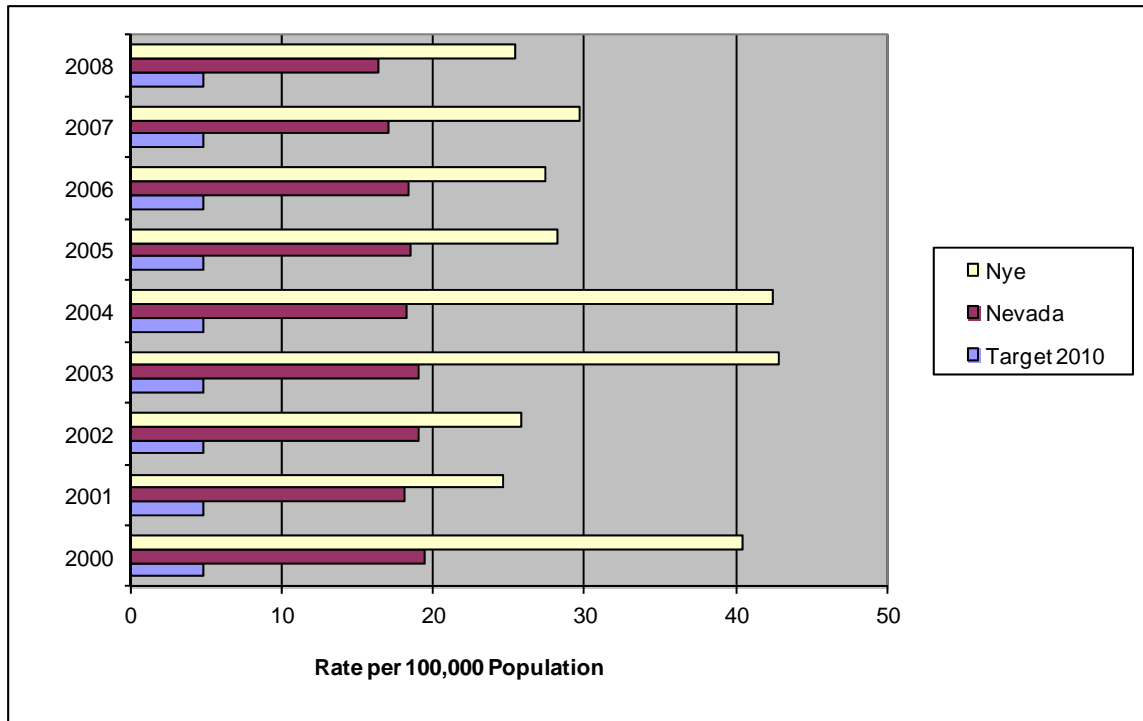
\*The Nevada data are from Nevada Vital Statistics Records. The U.S. data are from the National Vital Statistics System - Natality. Note: 2008 data are not final and are subject to change.

# Mental Health and Mental Disorders

Healthy People 2010 Objective (18-1.): Reduce the suicide rate.

Healthy People 2020 Objective MHMD HP2020-1: Reduce the suicide rate.

Age-Adjusted Suicide Death Rate, Nye County and Nevada, 2000 - 2008.\*



From 2000-2008, the suicide mortality rates for Nevada and Nye County fluctuated. The 2008 Nye County suicide death rate approached half of the 2000 rate, but was still more than five times the Healthy People 2010 target rate of 4.8 suicide deaths per 100,000 population. Neither Nevada nor Nye County met the Healthy People 2010 target.

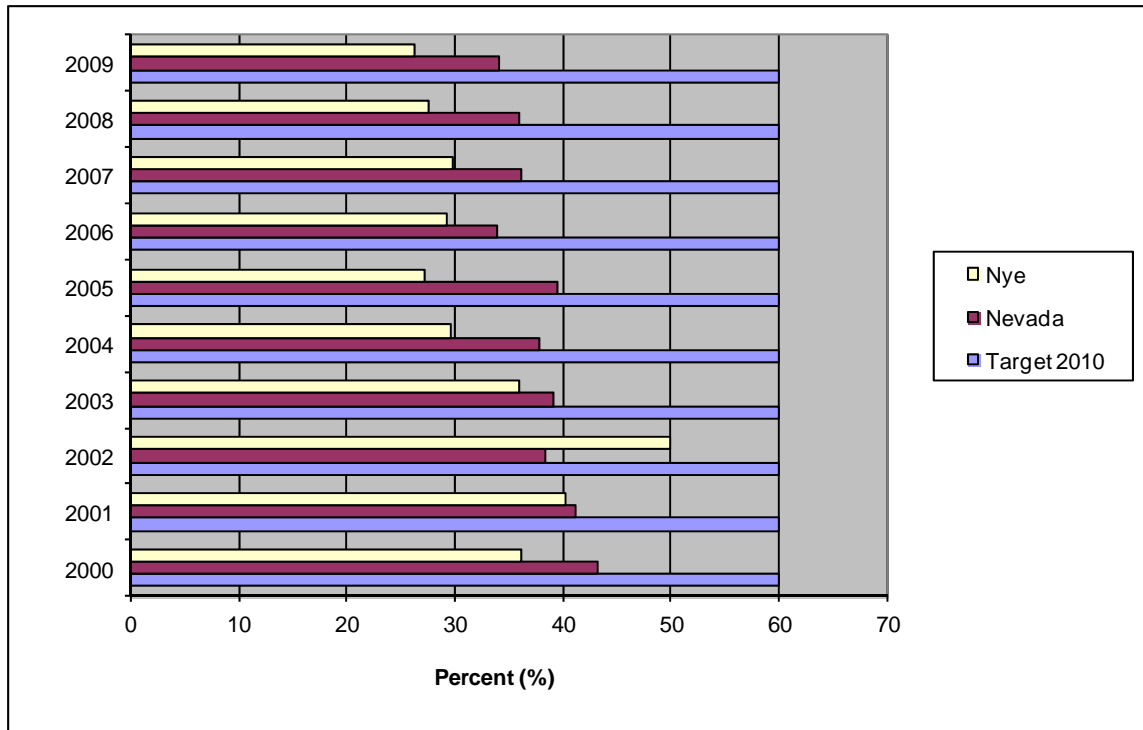
\*These rates are age-adjusted to the 2000 U.S. standard population. The Nevada data is from Nevada Vital Statistics Records (NVSR), and the U.S. data is from the National Vital Statistics System (NVSS)– Mortality. Note: 2007 and 2008 data are not final and are subject to change.

# Nutrition and Weight Status

**Healthy People 2010 Objective (19-1):** Increase the proportion of adults who are at a healthy weight.

**Healthy People 2010 Objective NWS HP2020-8:** Increase the proportion of adults who are at a healthy weight.

**Proportion of Adults Who Are At a Healthy Weight, Nye County and Nevada, BRFSS Data, 2000 - 2009.\***



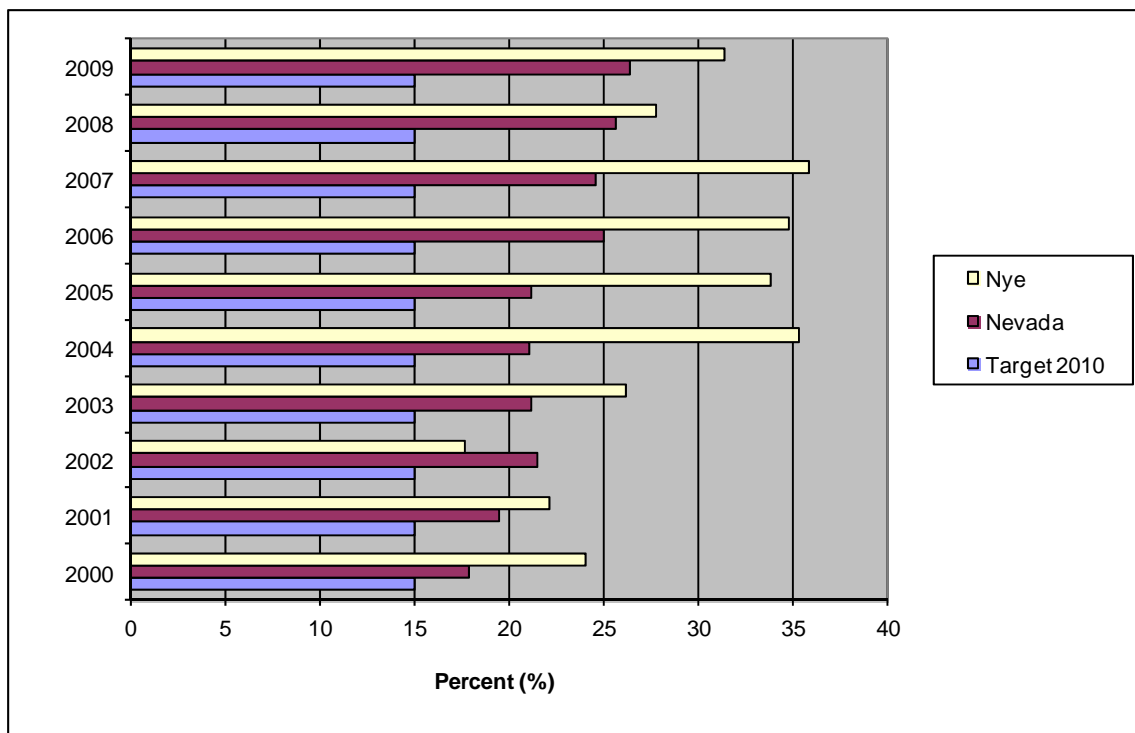
Between 2000-2009, both Nye County and Nevada overall had a decreasing trend in the percentage of adults who are at a healthy weight. From 2004-2009 the proportion of adults at a healthy weight in Nye County was less than half of the Healthy People 2010 goal of 60 percent. The Healthy People 2010 target was not attained by either the county or Nevada.

\*These percentages are weighted to survey population characteristics. Not all counties were included in the survey results. Note: Body weight estimates from self-reported heights and weights tend to be lower than those from measured height and weight.

**Healthy People 2010 Objective (19-2):** Reduce the proportion of adults who are obese.

**Healthy People 2020 Objective NWS HP2020-9:** Reduce the proportion of adults who are obese.

**Proportion of Adults Who Are Obese, Nye County and Nevada, BRFSS Data, 2000 - 2009.\***



The proportion of adults who are obese increased for both the state and Nye County from 2000-2008. Neither Nevada, nor the county, met the Healthy People 2010 target of 15 percent. In five of the ten study years, Nye County had a rate over twice the Healthy People 2010 target.

\*These percentages are weighted to survey population characteristics. Not all counties were included in the survey results. Note: Body weight estimates from self-reported heights and weights tend to be lower than those from measured height and weight.

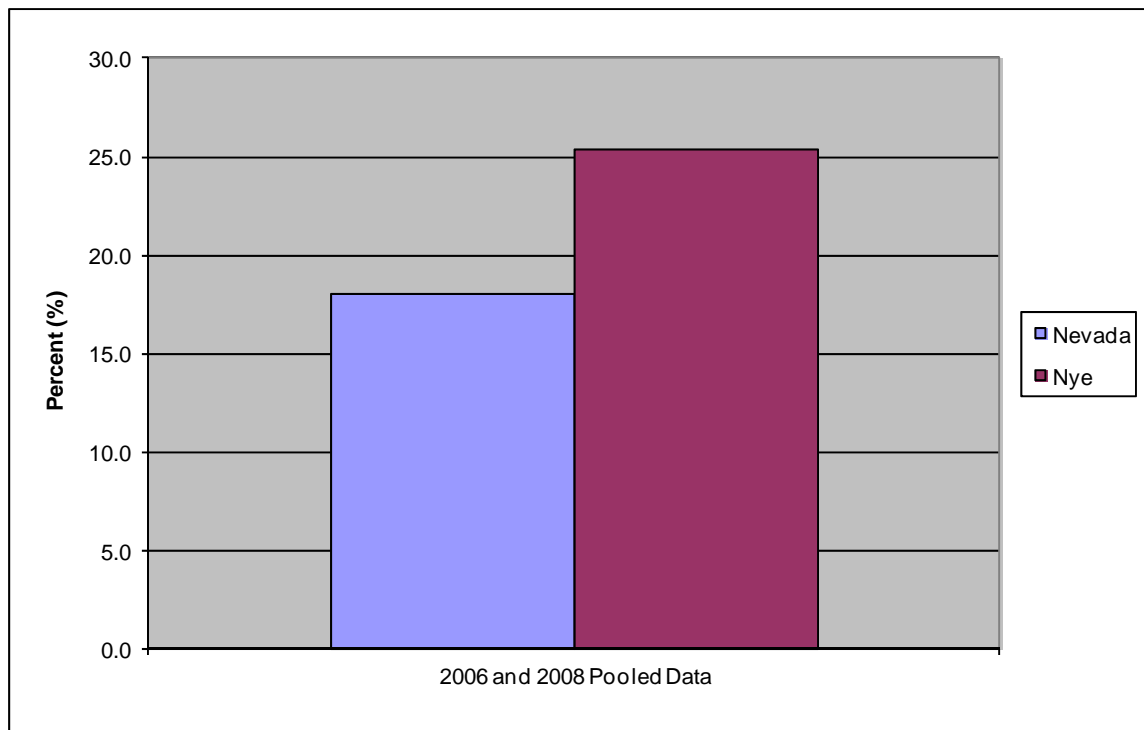


# Oral Health

**Healthy People 2010 Objective (21-4.):** Reduce the proportion of older adults, aged 65 years and older, reporting having all their natural teeth extracted.

**Healthy People 2020 Objective OH HP2020-4.2:** Reduce the proportion of older adults who have lost all their natural teeth (aged 65 to 74 years).

**Aggregated Proportion of Older Adults Aged 65 Years and Older Reporting Having All of Their Natural Teeth Extracted, Nye County and Nevada, BRFSS Data, 2006 and 2008 Pooled Data.\***



During the Behavioral Risk Factor Surveillance System study years, Nevada saw a lower percentage of older adults, ages 65 years and older, having had all of their natural teeth extracted than Nye County. Nye County exceeded the Healthy People 2010 target of 22 percent. Nevada met the Healthy People 2010 target.

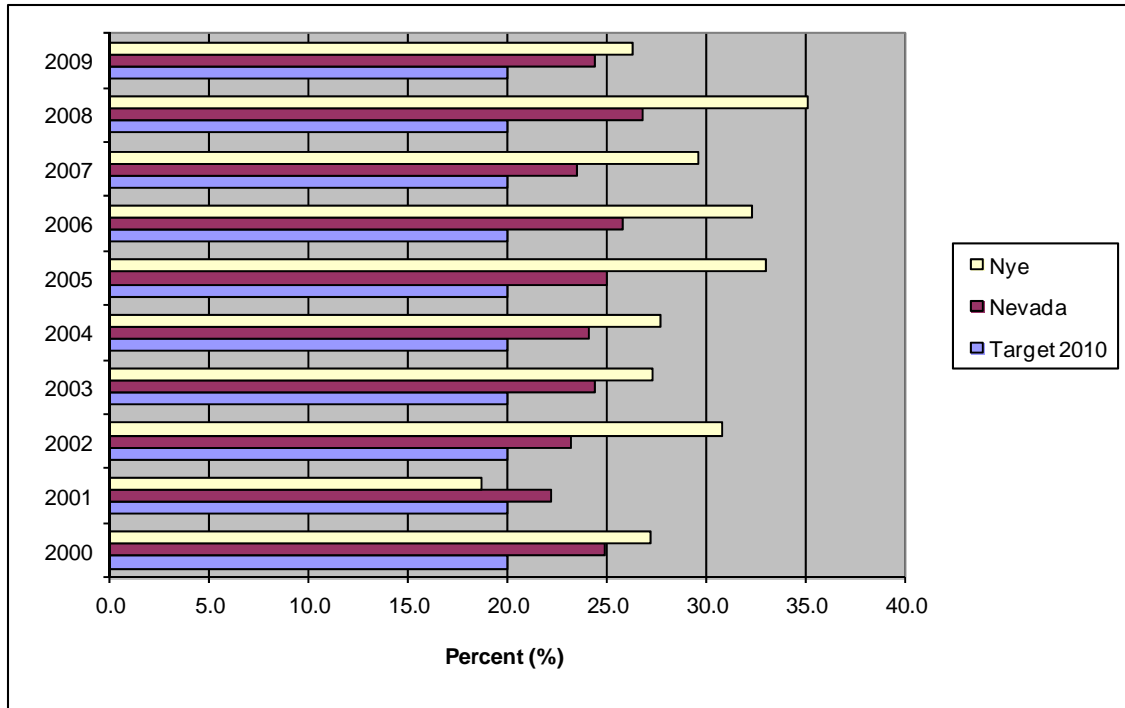
\*These percentages are weighted to survey population characteristics. Not all counties were included in the survey results.

# Physical Activity and Fitness

**Healthy People 2010 Objective (22-1.):** Reduce the proportion of adults who engage in no leisure-time physical activity.

**Healthy People 2020 Objective PA HP2020-1:** Reduce the proportion of adults who engage in no leisure-time physical activity.

**Proportion of Adults Who Engage in No Leisure Time Physical Activity, Nye County and Nevada, BRFSS Data, 2000 - 2009.\***



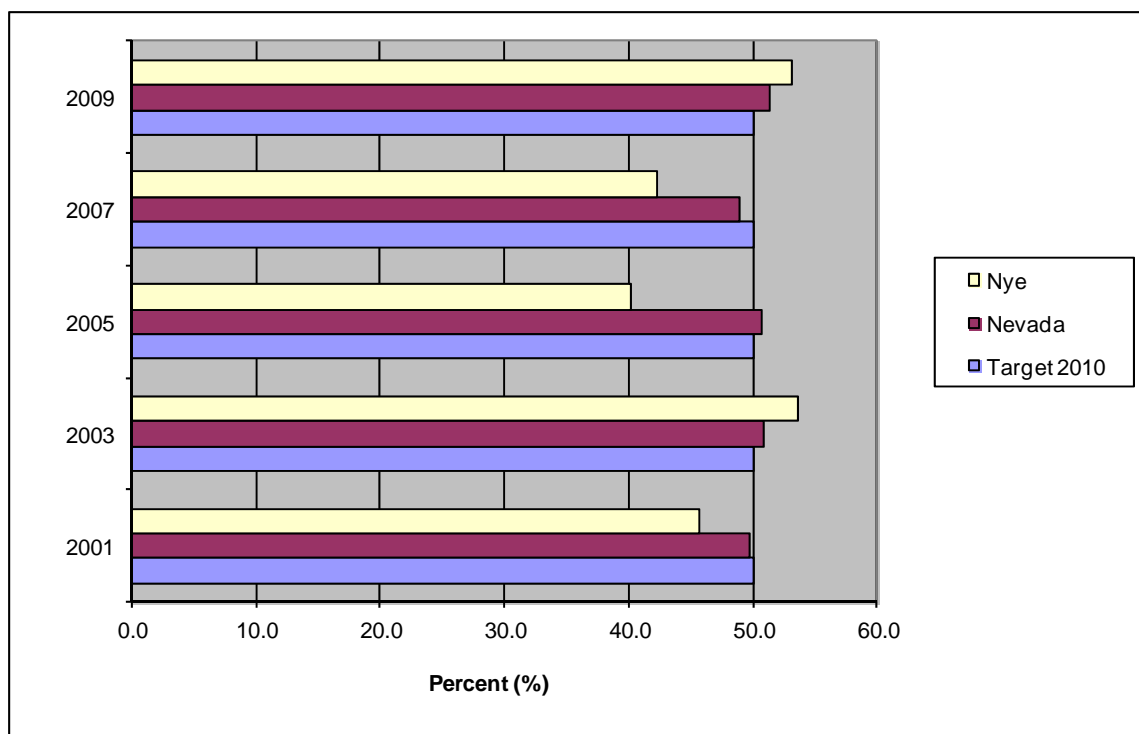
According to the Behavioral Risk Factor Surveillance System data for 2000-2009, the percentage of adults who engage in no leisure time physical activity fluctuated for both the state and Nye County this decade. The Healthy People 2010 target of 20 percent was not met by either the county or the state.

\*These percentages are weighted to survey population characteristics. Not all counties were included in the survey results.

**Healthy People 2010 Objective (22-2.):** Increase the proportion of adults who engage regularly, preferably daily, in moderate physical activity for at least 30 minutes per day.

**Healthy People 2020 Objective PA HP2020-2.1:** Increase the proportion of adults who engage in aerobic physical activity of at least moderate intensity for at least 150 minutes/week or 75 minutes/week of vigorous intensity or an equivalent combination.

**Proportion of Adults Who Engage in Aerobic Physical Activity of At Least Moderate Intensity for At Least 150 Minutes per Week or of Vigorous Intensity for At Least 75 Minutes per Week or an Equivalent Combination, Nye County and Nevada, BRFSS Data, 2001, 2003, 2005, 2007, 2009.\***



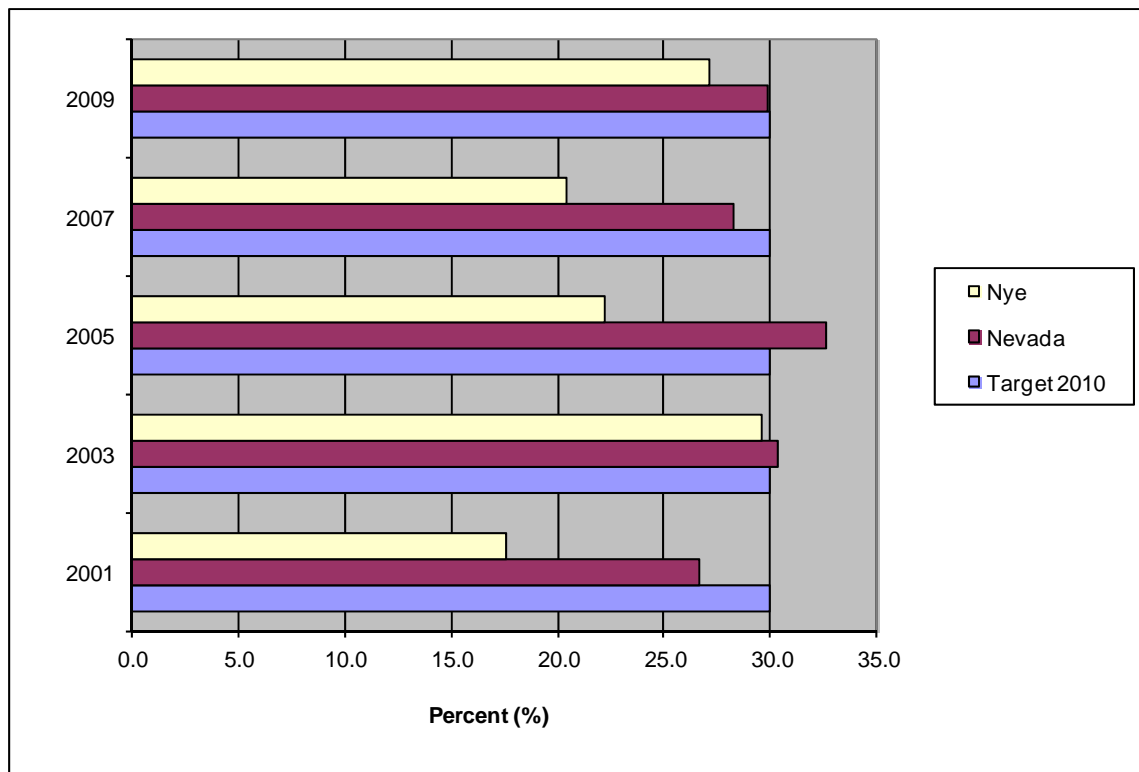
During the Behavioral Risk Factor Surveillance System study years 2001-2009, the proportion of adults who engage in aerobic physical activity of at least moderate intensity for at least 150 minutes per week or of vigorous intensity for at least 75 minutes per week or an equivalent combination fluctuated for both Nevada and Nye County. Both the county and the state met the Healthy People 2010 target of 50 percent in 2003 and 2009. Nevada also met the goal in the year 2005.

\*These percentages are weighted to survey population characteristics. Not all counties were included in the survey results.

**Healthy People 2010 Objective (22-3.):** Increase the proportion of adults who engage in vigorous physical activity promoting the development and maintenance of cardio-respiratory fitness for 20 or more minutes per day 3 or more days per week.

**Healthy People 2020 Objective PA HP2020-2.2:** Increase the proportion of adults who engage in aerobic physical activity of at least moderate intensity for more than 300 minutes/week or more than 150 minutes/week of vigorous intensity or an equivalent combination.

**Proportion of Adults Who Engage in Aerobic Physical Activity of At Least Moderate Intensity for More Than 300 Minutes per Week or More Than 150 Minutes per Week of Vigorous Intensity or An Equivalent Combination, Nye County and Nevada, BRFSS Data, 2001, 2003, 2005, 2007, 2009.\***



From 2001-2009, the proportion of adults who engage in aerobic physical activity of at least moderate intensity for at least 300 minutes per week or of vigorous intensity for at least 150 minutes per week or an equivalent combination fluctuated for both the state and the county. Nye County did not meet the Healthy People 2010 target of 30 percent in any of the Behavioral Risk Factor Surveillance System reported years between 2001 and 2009.

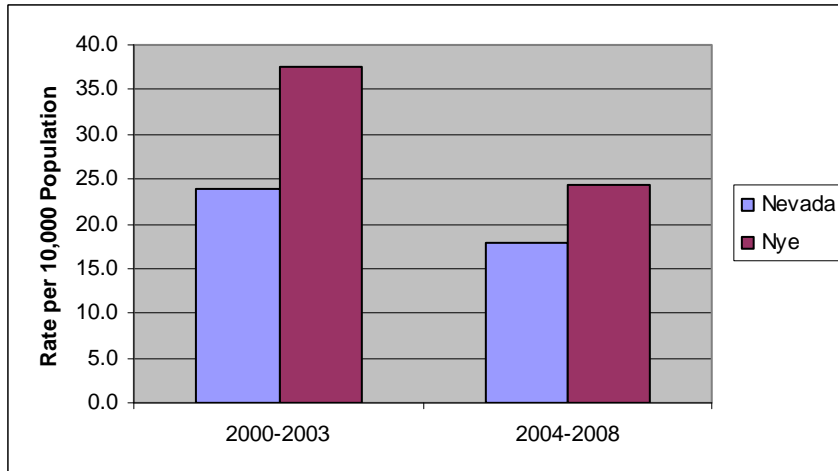
\*These percentages are weighted to survey population characteristics. Not all counties were included in the survey results.

# Respiratory Diseases

**Healthy People 2010 Objective (24-2a.):** Reduce hospitalizations for asthma in children under age 5 years.

**Healthy People 2020 Objective RD HP2020-2.1:** Reduce hospitalizations for asthma in children under age 5 years.

**Aggregated Hospitalizations for Asthma in Children Under Age 5 Years, Nye County and Nevada, 2000 - 2003 and 2004 - 2008.\***



On average from 2000-2008, the asthma hospitalization rate for children under age 5 years, in both Nye County and Nevada decreased.

From 2004-2008 both the county and the state averaged better than the Healthy People 2010 target rate of 25 hospitalizations per 10,000 population.

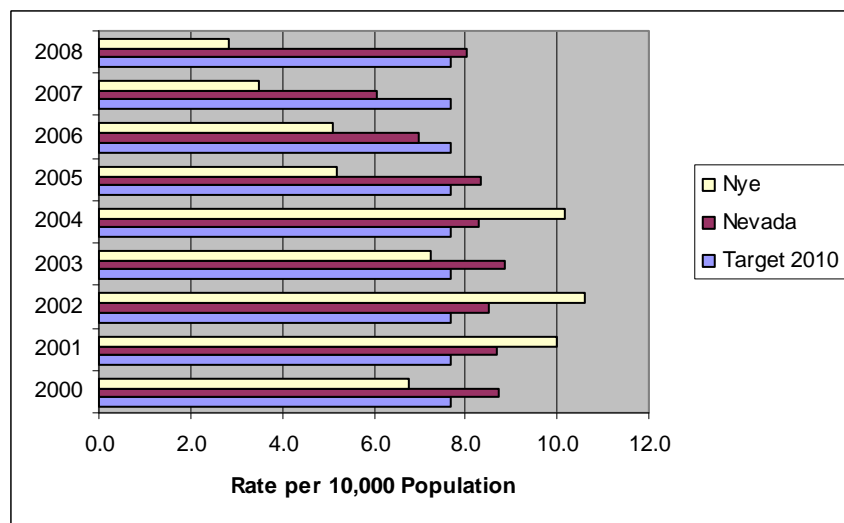
**Healthy People 2010 Objective (24-2b.):** Reduce hospitalizations for asthma in children and adults, aged 5 to 64 years.

**Healthy People 2020 Objective RD HP2020-2.2:** Reduce hospitalizations for asthma in children and adults, aged 5 to 64 years.

**Hospitalizations for Asthma in Children and Adults Aged 5 to 64 Years, Nye County and Nevada, 2000 - 2008.\***

From 2004-2008, the asthma hospitalization rate for children and adults, aged 5 to 64 years, has declined in Nye County.

Nye County met the Healthy People 2010 target rate of 7.7 hospitalizations per 10,000 population in 2006 and 2007.

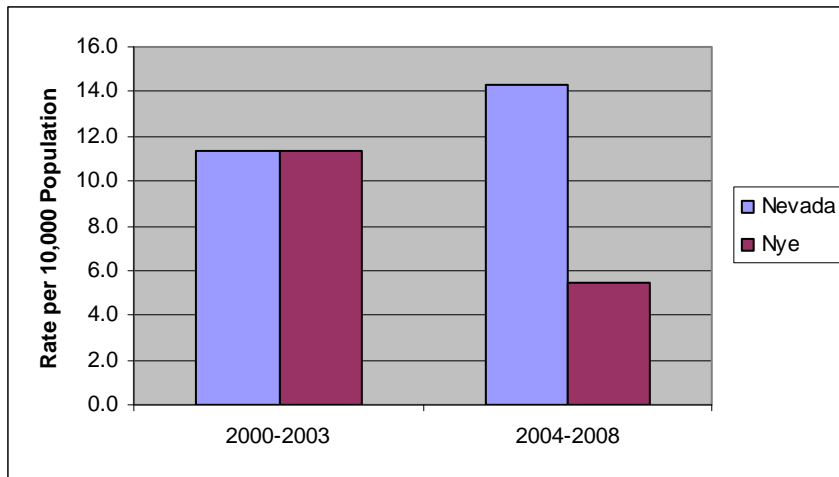


\*The Nevada data are from Nevada Inpatient Hospital Discharge Database (NIHDD).

**Healthy People 2010 Objective (24-2c.):** Reduce hospitalizations for asthma in adults, aged 65 years and older.

**Healthy People 2020 Objective RD HP2020-2.3:** Reduce hospitalizations for asthma in adults, aged 65 years and older.

**Aggregated Hospitalizations for Asthma in Adults Aged 65 Years and Older, Nye County and Nevada, 2000 - 2003 and 2004 - 2008.\***



On average from 2000-2008, the asthma hospitalizations for adults, ages 65 years and older, decreased by one-half in Nye County.

The county met the Healthy People 2010 target rate of 11.0 per 10,000 population over this time period.

\*The Nevada data are from Nevada Inpatient Hospital Discharge Database (NIHDD).

**Healthy People 2010 Objective (24-10.):** Reduce deaths from chronic obstructive pulmonary disease among adults.

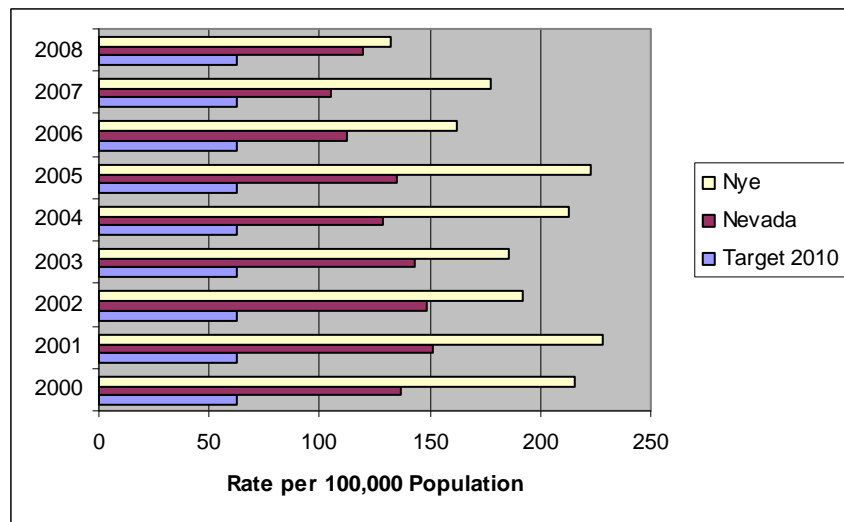
**Healthy People 2020 Objective RD HP2020-10:** Reduce deaths from chronic obstructive pulmonary disease among adults.

The mortality rate for chronic obstructive pulmonary disease (COPD) fluctuated for both the state and the county during 2000-2008.

The Healthy People 2010 objective rate of 62.3 per 100,000 population was not met.

However, both Nevada and Nye County had an overall downward trend from 2000-2008.

**Age-Adjusted Chronic Obstructive Pulmonary Disease Deaths, Nye County and Nevada, 2000 - 2008.\***



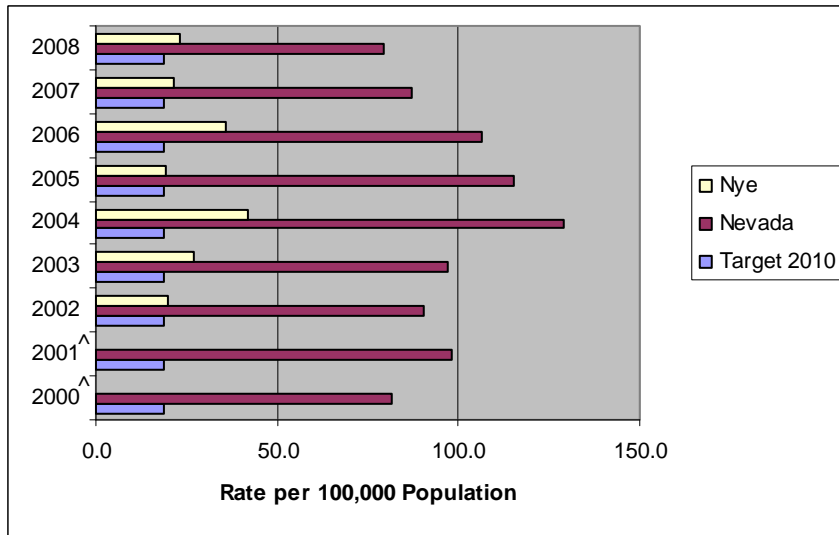
\*These rates are age-adjusted to the 2000 U.S. standard population. The Nevada data are from Nevada Vital Statistics Records. Note: 2007 and 2008 data are not final and are subject to change.

# Sexually Transmitted Diseases

**Healthy People 2010 Objective (25-2a.):** Reduce gonorrhea rates.

**Healthy People 2020 Objective STD HP2020-6:** Reduce gonorrhea rates.

**Rate of Gonorrhea, Nye County and Nevada, 2000 - 2008.\***



From 2004-2008, the rate of gonorrhea declined in Nevada. The Nye County rate fluctuated from 2000-2008.

Neither the state nor Nye County met the Healthy People 2010 target rate of 19 cases per 100,000 population.

<sup>^</sup> 2000 and 2001 data are not available for Nye County due to small counts.

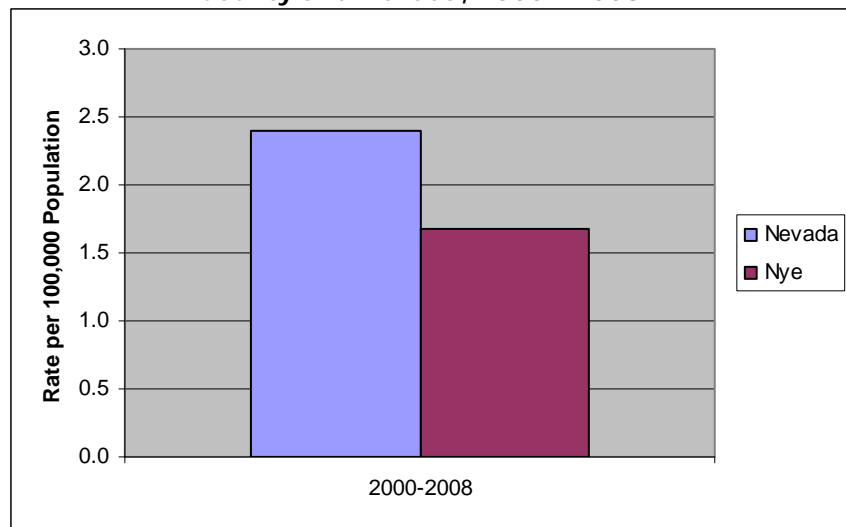
**Healthy People 2010 Objective (25-3.):** Reduce sustained transmission of primary and secondary syphilis.

**Healthy People 2020 Objective STD HP2020-5:** Reduce sustained transmission of primary and secondary syphilis.

**Aggregated Rate of Primary and Secondary Syphilis, Nye County and Nevada, 2000 - 2008.\***

The rate for primary and secondary syphilis averaged lower in Nye County than in the state from 2000-2008.

However, the county rate was still more than eight times higher than the Healthy People 2010 target rate of .2 cases per 100,000 population.



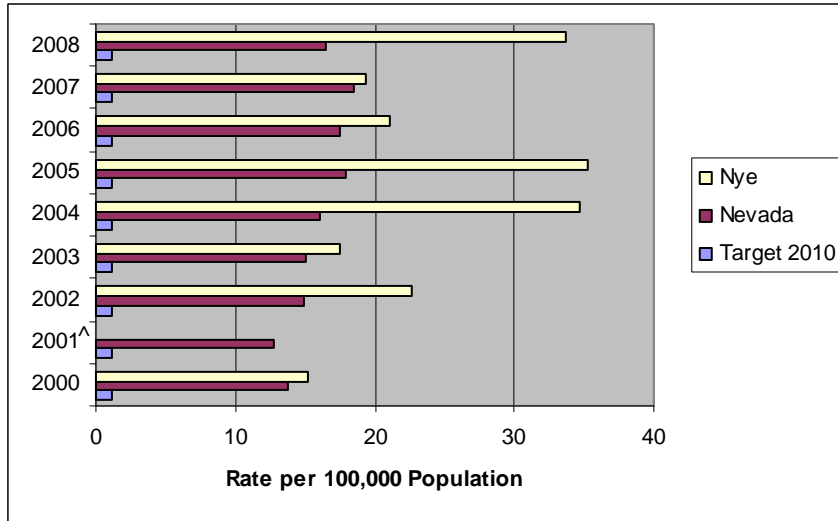
\* Nevada data are provided by the STD-MIS database.

# Substance Abuse

**Healthy People 2010 Objective (26-3):** Reduce drug-induced deaths.

**Healthy People 2020 Objective SA HP2020-12:** Reduce drug-induced deaths.

**Age-Adjusted Drug-Induced Death Rate, Nye County and Nevada 2000 - 2008.\***



From 2000-2008, the drug induced mortality rate for both the state and Nye County fluctuated.

Nye County's rate was more than 12 times higher than the Healthy People 2010 objective rate of 1.2 deaths per 100,000 population every year, and sometimes was as high as 29 times higher.

<sup>^</sup> 2001 data are not available for Nye County due to small counts.

\*These rates are age-adjusted to the 2000 U.S. standard population. The Nevada data are from Nevada Vital Statistics Records. Note: 2007 and 2008 data are not final and are subject to change.

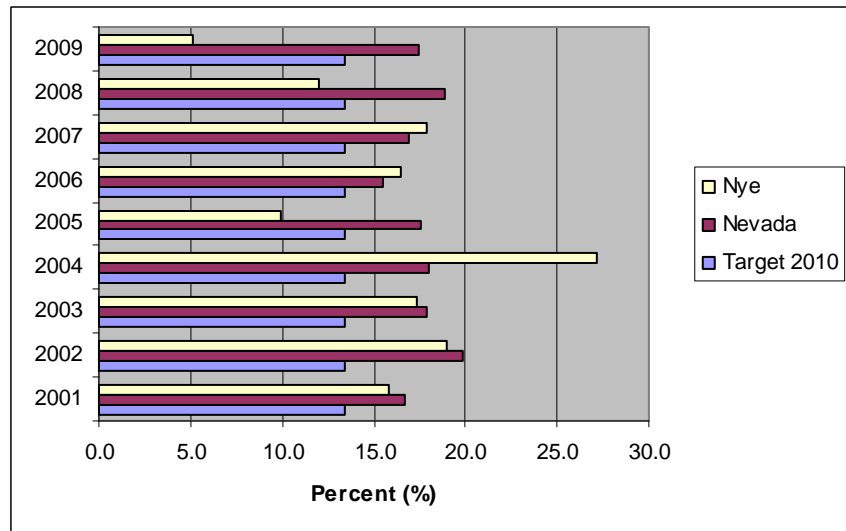
**Healthy People 2010 Objective (26-11c.):** Reduce the proportion of adults, aged 18 years and older, engaging in binge drinking of alcohol.

**Healthy People 2020 Objective SA HP2020-14.3:** Reduce the proportion of adults, aged 18 years and older, engaging in binge drinking of alcohol.

**Proportion of Adults Aged 18 Years and Older Engaging in Binge Drinking Alcohol, Nye County and Nevada, BRFSS Data, 2001 - 2009.\***

The percentage of adults, ages 18 years and older, engaging in binge drinking of alcohol fluctuated for both Nevada and Nye County from 2001-2009.

Since 2008, Nye County met the Healthy People 2010 target of 13.4 percent for binge drinking in 2008 and 2009.



\*These percentages are weighted to survey population characteristics. Not all counties were included in the survey results.

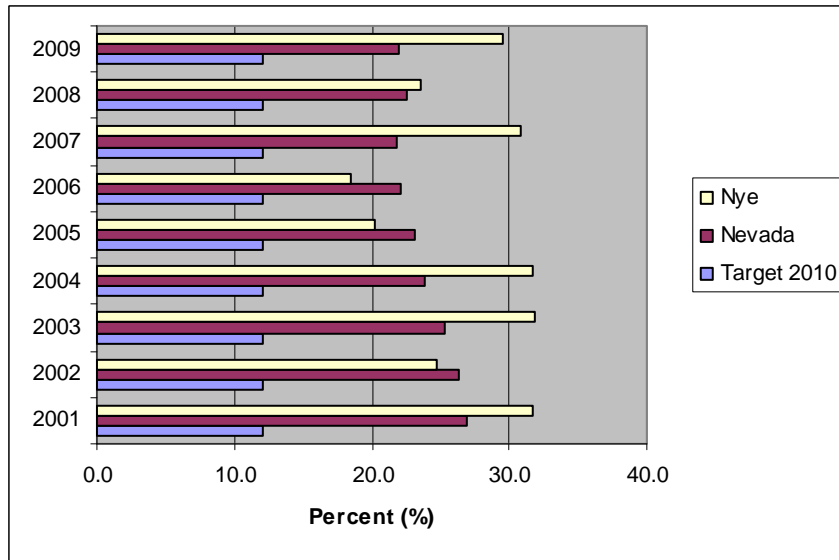


# Tobacco Use

**Healthy People 2010 Objective (27-1a.):** Reduce cigarette smoking by adults.

**Healthy People 2020 Objective TU HP2020-1.1:** Reduce tobacco use by adults – cigarette smoking.

**Proportion of Cigarette Smoking Adults, Nye County and Nevada, BRFSS Data, 2000 - 2009.\***



From 2001-2009, the Nevada rate for the percentage of cigarette smoking adults decreased. The Nye County rate fluctuated during this same time period.

Neither the state nor the county met the Health People 2010 objective of 12 percent in any given year.

In 2009, the county rate was more than three times the Healthy People 2010 target.

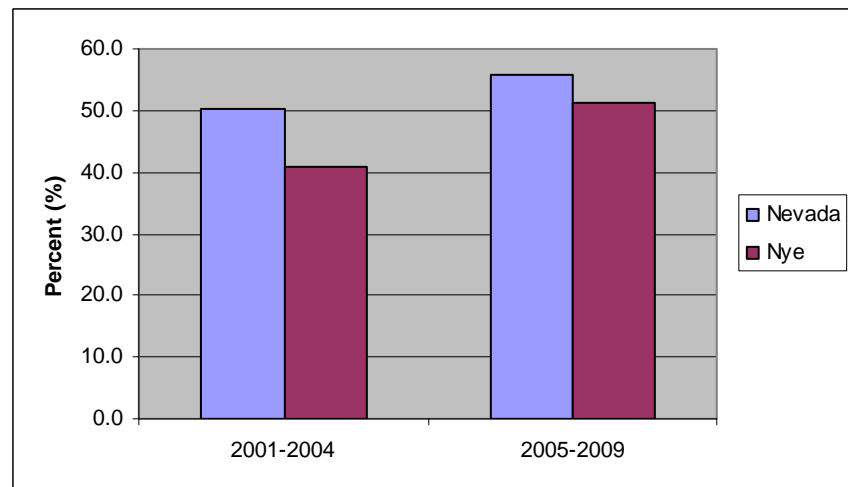
**Healthy People 2010 Objective (27-5.):** Increase smoking cessation attempts by adult smokers.

**Healthy People 2020 Objective TU HP2020-4.1:** Increase smoking cessation attempts by adult smokers.

**Aggregated Proportion of Adults Reporting Smoking Cessation Attempts in the Past Year, Nye County And Nevada, BRFSS Data, 2001 - 2004 and 2005 - 2009.\***

The percentage of adults reporting smoking cessation attempts in the past year increased for both Nevada and Nye County on average from 2001-2009.

However, neither met the Healthy People 2010 goal of 80 percent.



\*These percentages are weighted to survey population characteristics. Not all counties were included in the survey results.

## Healthy People 2010: Nye County Indicator Exemptions

The following Healthy People 2010 objectives were not reported in the Nye County Report due to a lack of available data:

- Adolescent Health (AH):
  - AH HP2020-1c: Increase the percentage of students whose reading skills are at or above the proficient achievement level for their grade.
  - AH HP2020-1d: Increase the percentage of students whose mathematical skills are at or above the proficient achievement level for their grade.
- Early and Middle Childhood (EMC):
  - EMC HP2020-3: Increase the proportion of elementary, middle, and senior high schools that require school health education.
- Family Planning (FP):
  - FP HP2020-9c: Increase the proportion of female adolescents aged 15 years who have never had sexual intercourse.
  - FP HP2020-9d: Increase the proportion of male adolescents aged 15 who have never had sexual intercourse.
  - FP HP2020-10e: The proportion of sexually active females aged 15 to 19 who used a condom at last intercourse.
  - FP HP2020-10f: The proportion of sexually active males aged 15 to 19 who used a condom at last intercourse.
- Immunizations and Infectious Diseases (IID):
  - IID HP2020-18: Percentage of children aged 19 to 35 months who receive recommended vaccines.
  - IID HP2020-20: Increase the percentage of children aged 19 to 35 months who receive the recommended vaccines.
- Injury and Violence Prevention (IVP):
  - IVP HP2020-13: Reduce physical fighting among adolescents.
  - IVP HP2020-14: Reduce weapon carrying by adolescents on school property.
- Mental Health and Mental Disorders (MHMD):
  - MHMD HP2020-2: Proportion of adolescents, grades 9 through 12, reporting suicide attempts in the past 12 months.
- Nutrition and Weight Status (NWS):
  - NWS HP2020-5c: Reduce the proportion of adolescents, aged 12 to 19 years, who are overweight or obese.
- Occupational Safety and Health (OSH):
  - OSH HP2020-7a: Work-related injury death rate, aged 16 years and older.
- Oral Health (OH):
  - OH HP2020-6a: Proportion of children aged 3 to 5 years with dental caries in primary and permanent teeth.

- OH HP2020-7a: Proportion of children aged 3 to 5 years with untreated dental decay.
  - OH HP2020-10b: Increase the proportion of children aged 8 years and older who have received dental sealants in their molar teeth.
- Physical Activity and Fitness (PAF):
  - PAF HP2020-7: Increase the proportion of adolescents that meet the current physical activity guidelines for aerobic physical activity and for muscle-strengthening activity.
- Sexually Transmitted Diseases (STD):
  - STD HP2020-3a: Reduce the proportion of females, aged 15 to 24 years with Chlamydia trachomatis infections attending family planning clinics.
- Substance Abuse (SA):
  - SA HP2020-4: Percentage of adolescents who report they rode during the previous 30 days with a driver who had been drinking alcohol, grades 9 through 12.
  - SA HP2020-7d: Proportion of adolescents engaging in binge drinking of alcohol.
  - SA HP2020-9b: Proportion of adolescents in the 10<sup>th</sup> grade reporting steroid use.
  - SA HP2020-9c: Proportion of adolescents in the 12<sup>th</sup> grade reporting steroid use.
  - SA HP1010-10: Reduce the proportion of adolescents who use inhalants.
- Tobacco Use (TU):
  - TU HP2020-6b: Proportion of adolescents reporting cigarette use in the past month.
  - TU HP2020-6c: Proportion of adolescents reporting spit tobacco use in the past month.

The following Healthy People 2010 objectives were not reported in the Nye County Report due to a lack of available data, counts of 0:

- Immunizations and Infectious Diseases (IID):
  - IID HP2020-4: Crude rate of reported cases of Meningococcal disease.

The following Healthy People 2010 objectives were not reported in the Nye County Report due to a lack of available data, counts below 5 but greater than 0:

- Blood Disorders and Blood Safety (BDDBS):
  - BDDBS HP2020-2: Reduce hospitalizations for sickle cell disease among children aged 9 years and younger.
- Cancer (C):
  - C HP2020-4: Cervical cancer death rate.
- Food Safety (FS):
  - FS HP2020-3c: Rate of reported cases of Listeriosis.

- Immunizations and Infectious Diseases (IID):
  - IID HP2020-5: Crude Rate of reported new cases of Tuberculosis.
  - IID HP2020-14: Reduce or eliminate cases of vaccine preventable diseases.
- Injury and Violence Prevention (IVP):
  - IVP HP2020-27: Death rate from drowning.
- Maternal, Infant, Child Health (MICH):
  - MICH HP2020-15g: Reduce infant death rate from birth defects (congenital heart failure).
  - MICH HP2020-1b: Death rate of children aged 5 to 9 years.