

# Eureka County

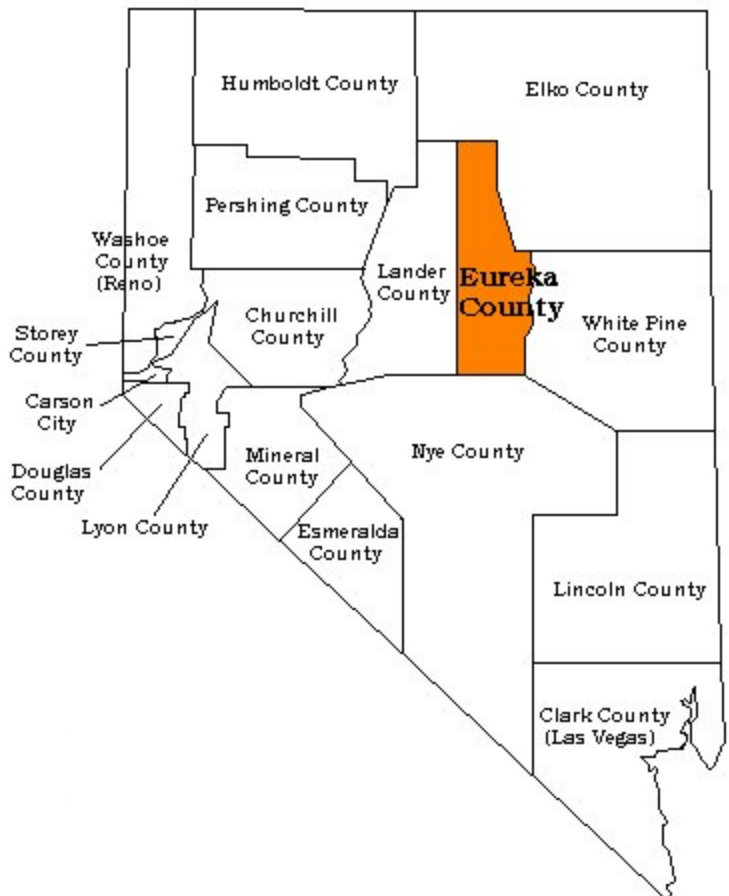


Population (2008)	1553
Land Area (square miles)	4,176
Persons per square mile	0.37
Race/Ethnicity	
• White	84.5%
• Black	0.6%
• American Indian & Alaskan Native	2.7%
• Asian	1.4%
• Hispanic or Latino origin	11.0%
Median Household Income	\$54,107
Persons Below Poverty	9.1%

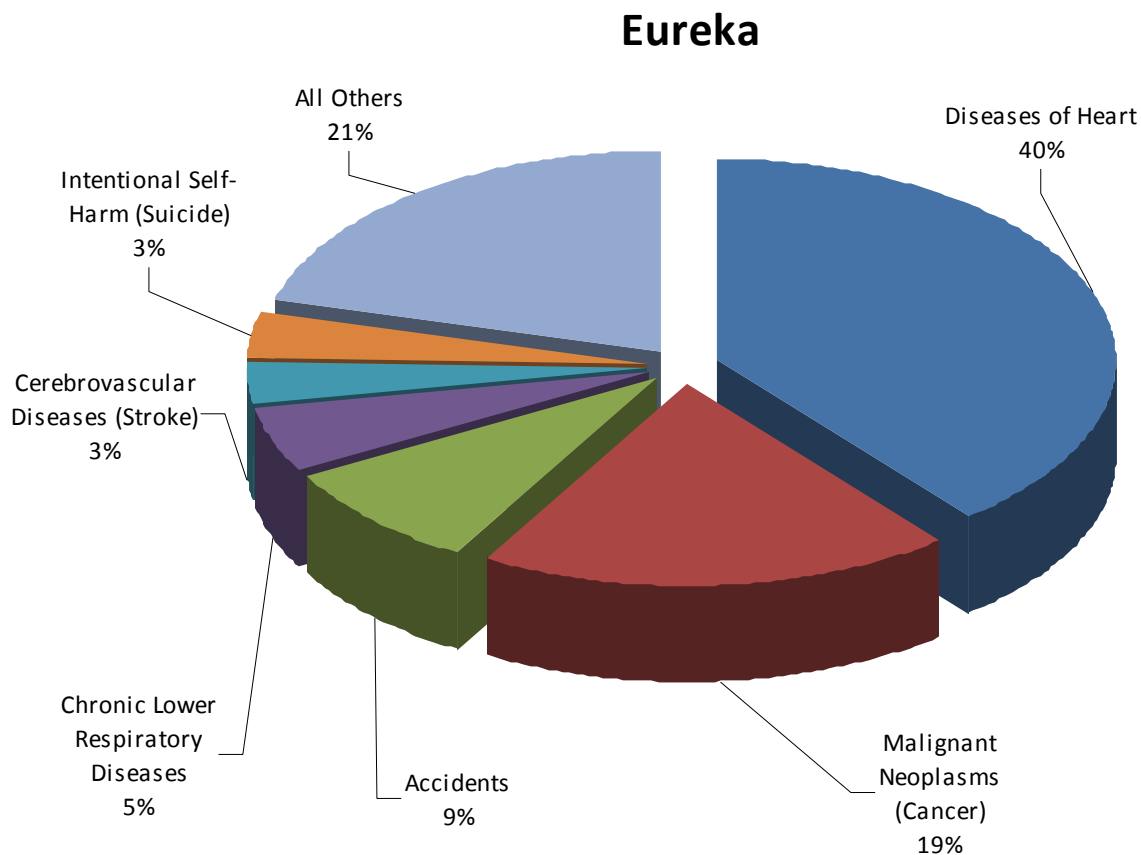
Population and race/ethnicity data are from the Nevada State Demographer; Income and poverty data are from the U.S. Census Bureau

## Healthy People Highlights:

- The percentage of pregnant women in Eureka County receiving adequate prenatal care in the first trimester of pregnancy increased from 69.2 percent to 87.0 percent.
- The average overall cancer death rate in Eureka County was less than that of the entire state of Nevada for the combined years 2000 through 2003 and 2004 through 2008.
- Eureka County's average adolescent pregnancy rate was lower than that of Nevada for the combined years 2000 through 2008, at 102.9 per 100,000 females aged 18 to 19.
- The average mortality rate for coronary heart disease in Eureka County was double that of Nevada as a whole for the combined years 2000 through 2003 and 2004 through 2008.
- The motor vehicle crash mortality rate for the combined years 2000 through 2008 in Eureka County was triple that for Nevada, at 47.2 per 100,000 people.



# Leading Causes of Death



### 2000 - 2008 Pooled Data

The list of Eureka County's top five leading causes of death is led by heart disease (40%), closely followed by malignant neoplasms—cancer (19%). Accidents (9%), chronic lower respiratory diseases (5%), cerebrovascular diseases—stroke and suicide tie for fifth place with each at (3%). All other causes of death account for the remaining 21% of the county's mortality.

Similarly, the leading cause of death for Nevada is heart disease (26%), followed by malignant neoplasms—cancer (23%), chronic lower respiratory diseases (6%), accidents (5%), and cerebrovascular diseases (5%).

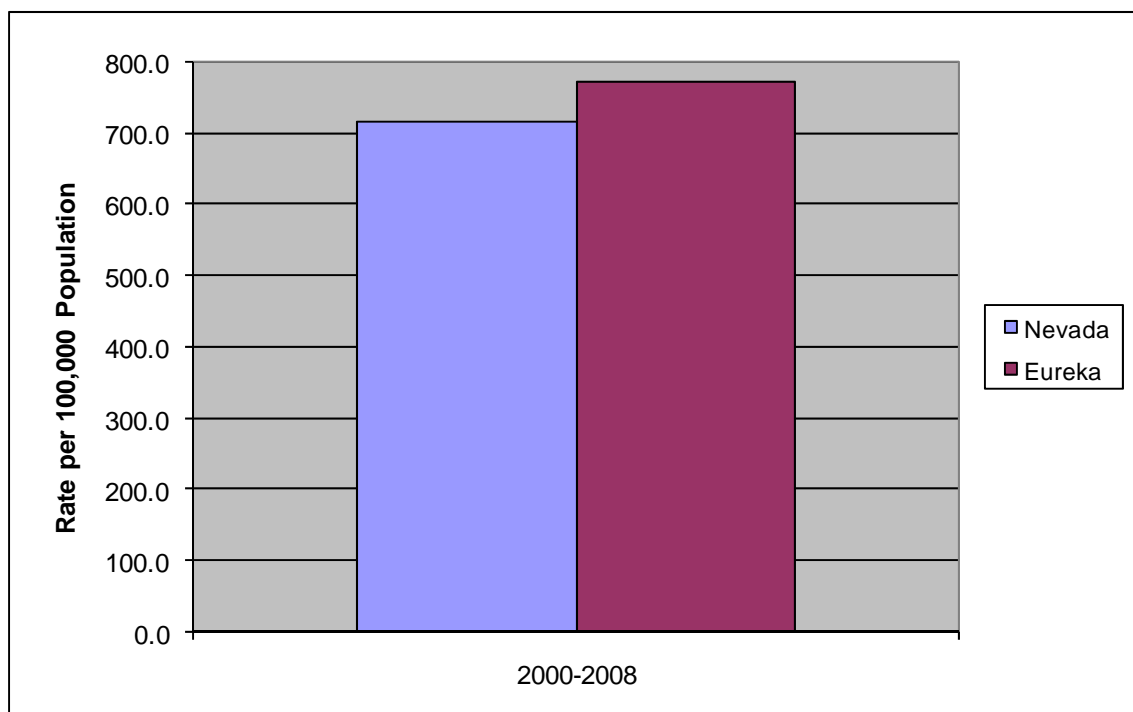
\*The data are from Nevada Vital Statistics Records.  
Note: 2007 and 2008 data are not final and are subject to change.

# Arthritis, Osteoporosis, and Chronic Back Conditions (AOCBC)

**Healthy People 2010 Objective (15-28):** Reduce hip fractures among females and males aged 65 and older.

**Healthy People 2020 Objective AOCBC HP2020-11:** Reduce hip fractures among older adults.

**Aggregated Hospitalization Rate for Hip Fractures Among Females Aged 65 Years and Older, Eureka County and Nevada, 2000 - 2008.\***



The Eureka County average hospitalization rate for hip fractures among females, aged 65 years and older, was higher than the state rate on average in the years 2000 through 2008. This was 85 percent higher than the Healthy People 2010 target rate of 416 per 100,000 population.

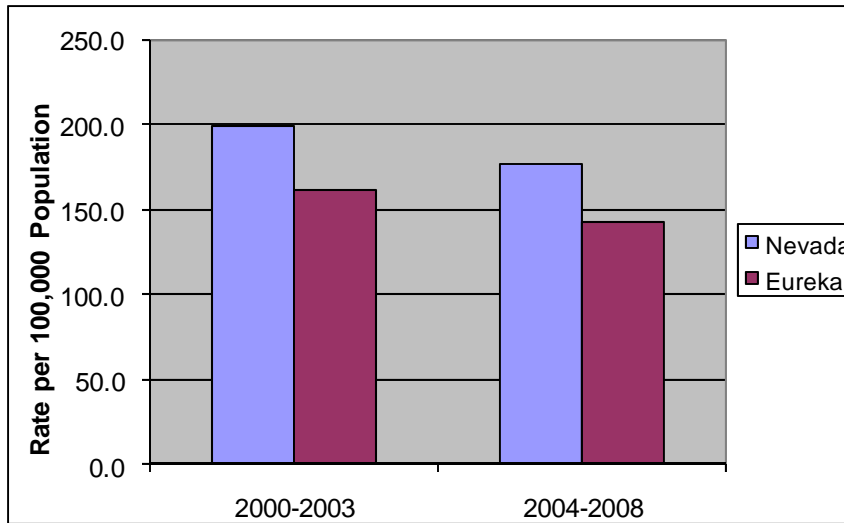
\*The Nevada data are from Nevada Inpatient Hospital Discharge (NIHDD).

# Cancer

**Healthy People 2010 Objective (3-1):** Reduce the overall cancer death rate.

**Healthy People 2020 Objective C HP2020-1:** Reduce the overall cancer death rate.

**Aggregated Age-Adjusted Overall Cancer Death Rate, Eureka County and Nevada, 2000 - 2003 and 2004 - 2008.\***



The overall cancer death rate for both the combined years 2000 through 2003 and the combined years 2004 through 2008 in Eureka County was lower than that of Nevada as a whole.

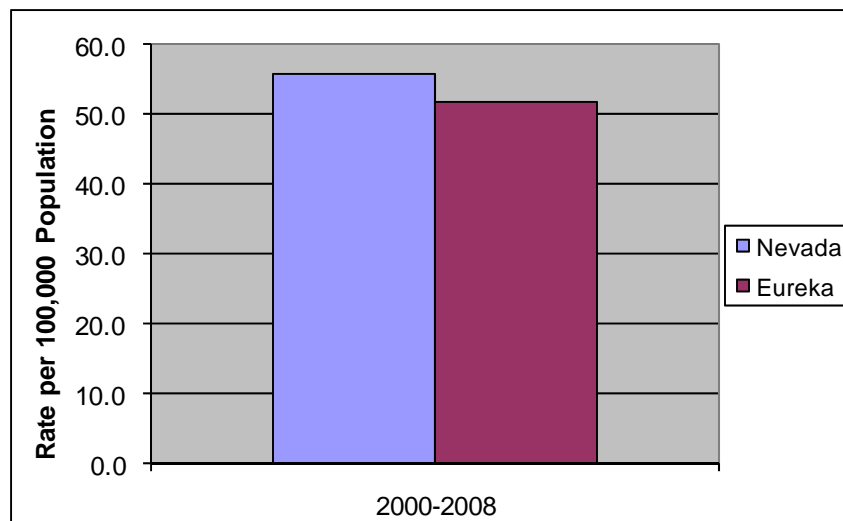
In both regions, Nevada and Eureka County, this rate has decreased. The county met the Healthy People 2010 target rate of 158.6 per 100,000 population.

**Healthy People 2010 Objective (3-2):** Reduce the lung cancer death rate.

**Healthy People 2020 Objective C HP2020-2:** Reduce the lung cancer death rate.

**Aggregated Age-Adjusted Lung Cancer Death Rate, Eureka County and Nevada, 2000 - 2008.\***

The lung cancer death rate in Eureka County averaged 20 percent higher than the Healthy People 2010 target rate of 43.3 per 100,000 population for the years 2000 through 2008.

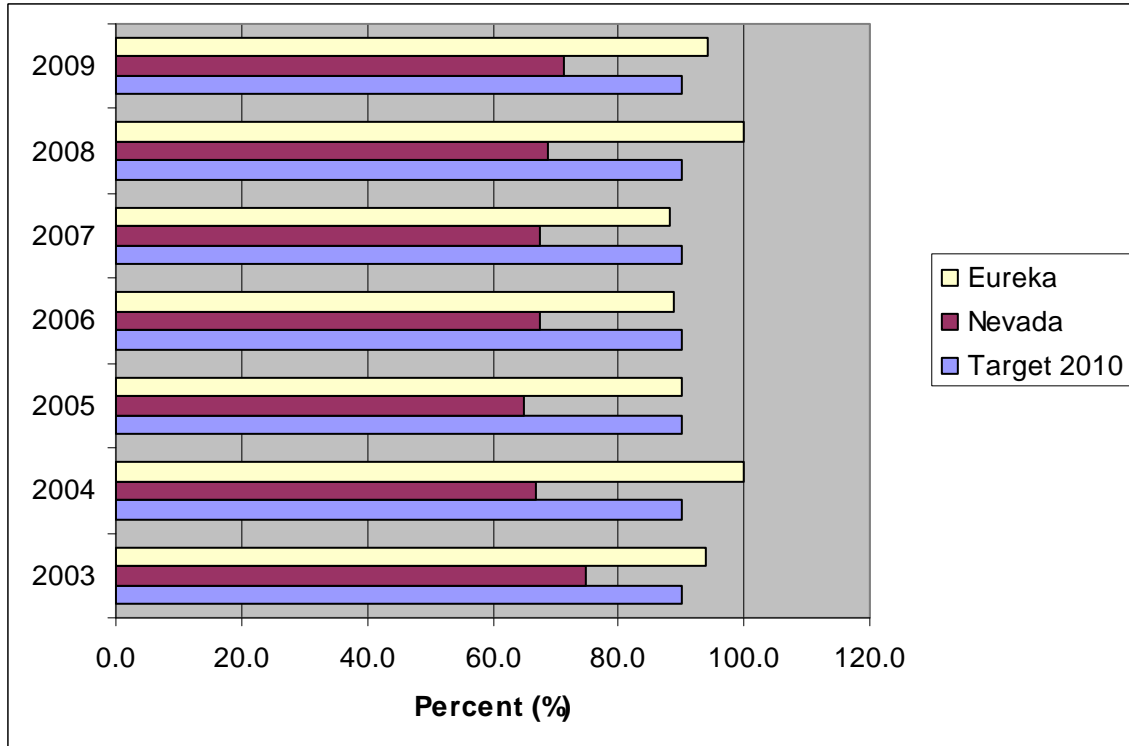


\*These rates are age-adjusted to the 2000 U.S. standard population. The Nevada data are from Nevada Vital Statistics Records. Note: 2007 and 2008 are not final and are subject to change.

# Education and Community-Based Programs (ECBP)

**Healthy People 2020 Objective ECBP HP2020-6:** Increase the proportion of the population that completes high school education.

**High School Completion Rate (Percent), Eureka County and Nevada, 2003 - 2009.\***



The Eureka County and state of Nevada high school completion rates fluctuated during the years 2003 through 2009.

Eureka County met or surpassed the Healthy People 2010 target of a 90 percent high school completion rate in five of the last seven years. In 2009, the high school completion rate for Eureka County was 94.1 percent.

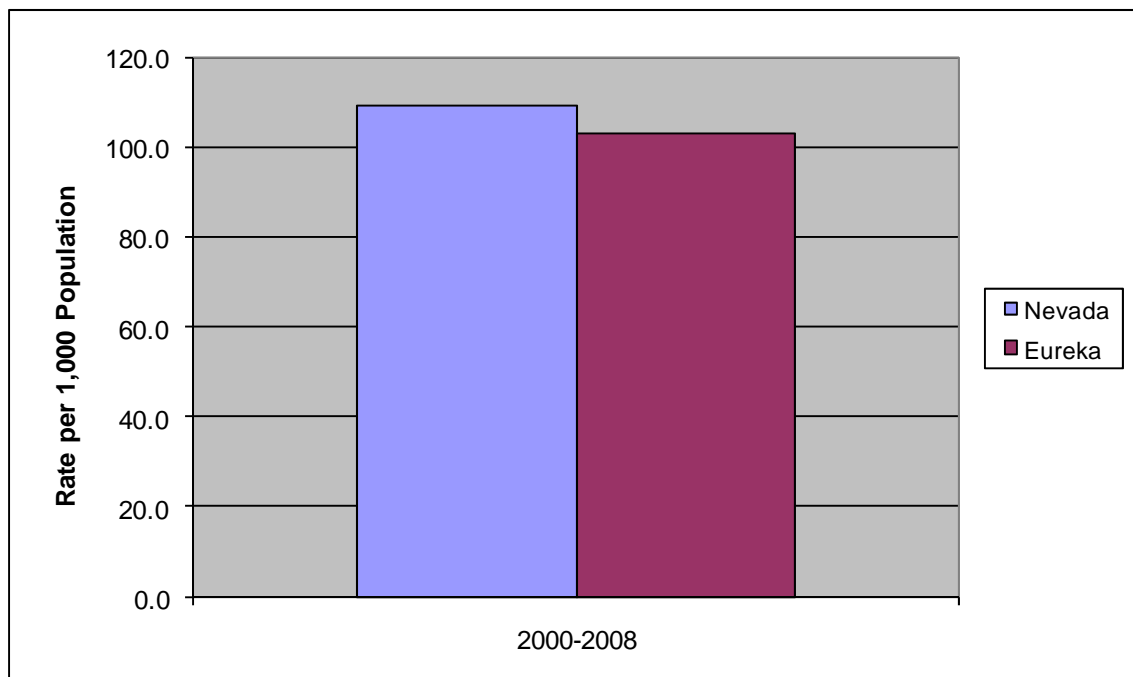
\*The Nevada data are from the Nevada Annual Reports of Accountability.

# Family Planning

**Healthy People 2010 Objective (9-7):** Reduce pregnancies among adolescent females.

**Healthy People 2020 Objective FP HP2020–8:** Reduce pregnancies among adolescent females, aged 15-17 and aged 18-19.

**Aggregated Adolescent Pregnancy Rate Among Females Aged 18 to 19 Years, Eureka County and Nevada, 2000 - 2008.\***



Eureka County's average adolescent pregnancy rate among females, aged 18 to 19 years, was 5 percent lower than the state of Nevada rate for the combined years 2000 through 2008.

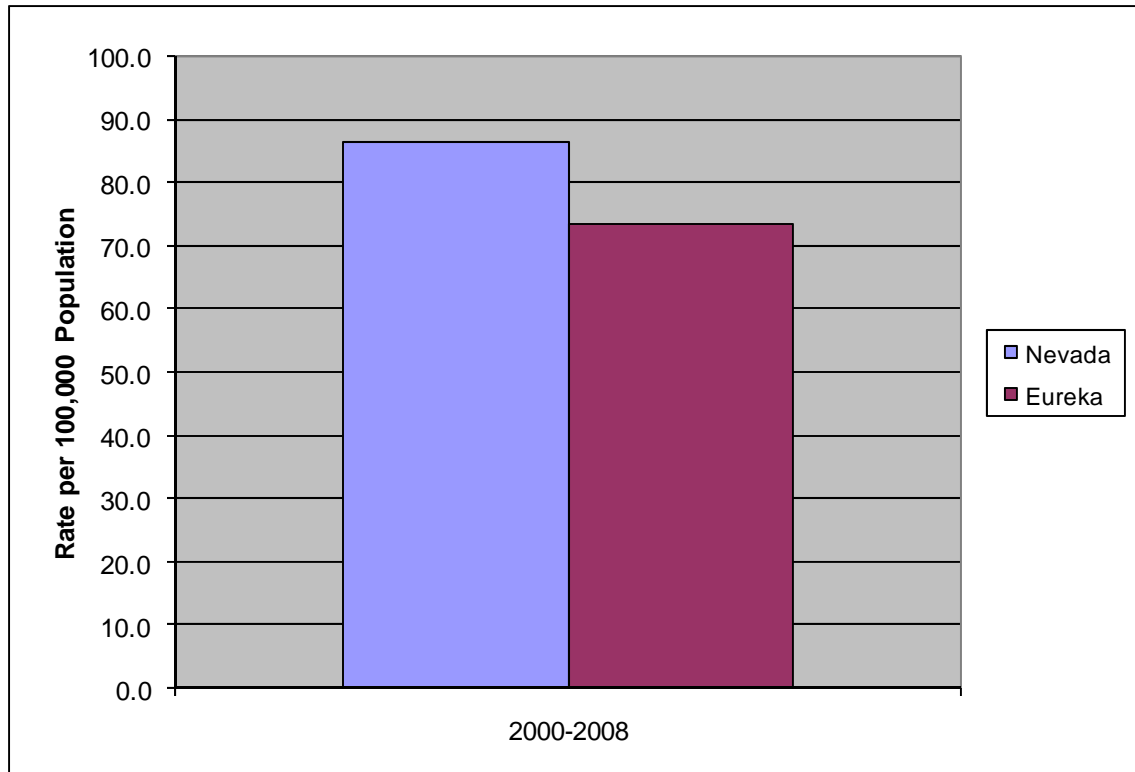
The Healthy People 2010 target rate was 39 per 1,000 population.

\*The Nevada data are from Nevada Vital Statistics Records—Births.  
Note: 2008 data are not final and are subject to change.

# Healthcare-Associated Infections (HAI)

**Healthy People 2020 Objective HAI HP2020-2:** Reduce invasive methicillin-resistant staphylococcus aureus (MRSA) infections.

**Aggregated Rate of Invasive Methicillin-Resistant Staphylococcus Aureus (MRSA) Infections, Eureka County and Nevada, 2000 - 2008.\***



The rate of invasive methicillin-resistant staphylococcus aureus (MRSA) infections was 14 percent lower for Eureka County than Nevada overall from 2000-2008. The Healthy People 2020 target rate of 6.56 per 100,000 population has yet to be met by the state or county.

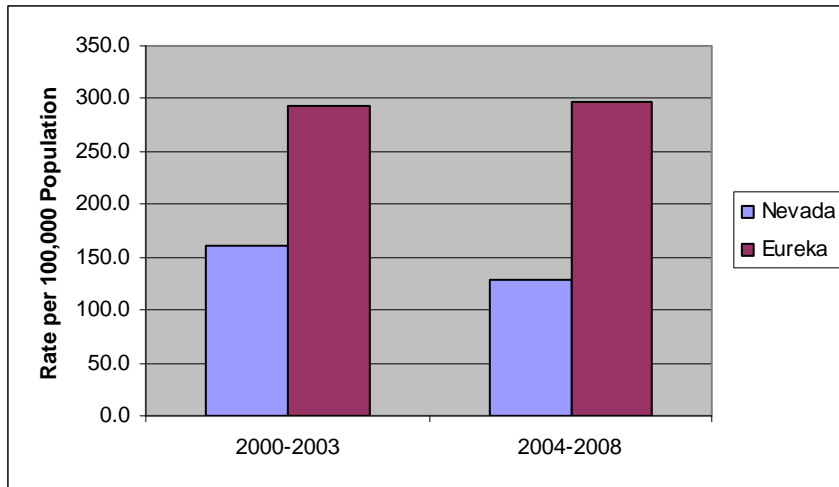
\*These rates are age-adjusted to the 2000 U.S. standard population. Nevada data are from the Nevada Inpatient Hospital Discharge Database (NIHDD)

# Heart Disease and Stroke (HDS)

**Healthy People 2010 Objective (12-1):** Reduce coronary heart disease deaths.

**Healthy People 2020 Objective HDS HP2020-2:** Reduce coronary heart disease deaths.

**Aggregated Age-Adjusted Coronary Heart Disease Death Rate, Eureka County and Nevada, 2000 - 2003 and 2004 - 2008.\***



The average mortality rate for coronary heart disease in Eureka County was double that of Nevada as a whole for the combined years 2000 through 2003 and 2004 through 2008.

The county rate was 85 percent higher than the Healthy People 2010 target rate of 162 per 100,000 population.

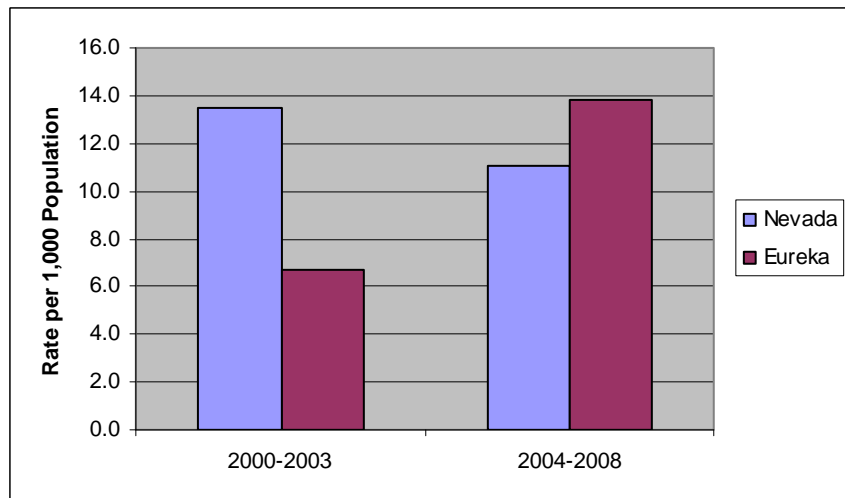
\*These rates are age-adjusted to the 2000 U.S. standard population. The Nevada data are from Nevada Vital Statistics Records. Note: 2007 and 2008 are not final and are subject to change.

**Healthy People 2010 Objective (12-6.):** Reduce the rate of hospitalizations of older adults aged 65 years and older with congestive heart failure.

The average hospitalization rate from congestive heart failure of adults, aged 65 years and older, was lower in Eureka County than in Nevada for the combined years 2000 through 2003, but was higher in Eureka County than in Nevada for the combined years 2004 through 2008.

The average hospitalization rate of older adults, aged 65 years and older, with congestive heart failure in Eureka County more than doubled from 2000-2008.

**Aggregated Hospitalization Rate of Older Adults Aged 65 Years and Older With Congestive Heart Failure, Eureka County and Nevada, 2000 - 2003 and 2004 - 2008.\***



\*The Nevada data are from Nevada Inpatient Hospital Discharge (NIHDD).



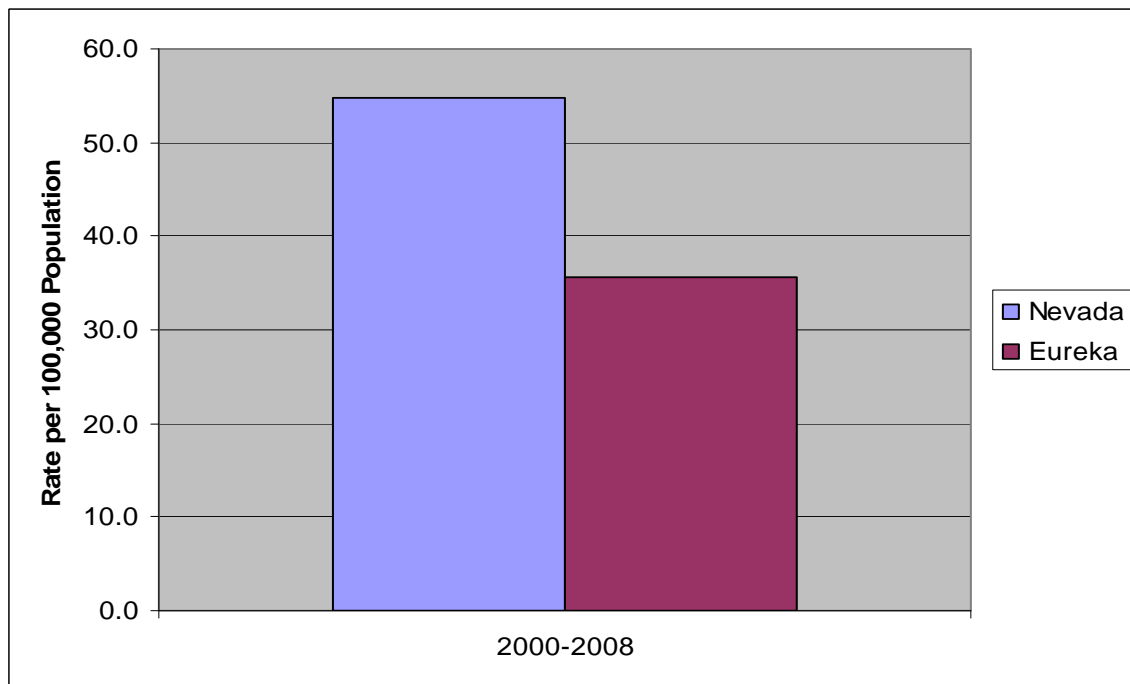
# Immunization and Infectious Diseases (IID)

**Healthy People 2010 Objective (14-17):** Reduce hospitalization caused by peptic ulcer disease in the United States.

**Healthy People 2020 Objective IID HP2020-10:** Reduce hospitalization caused by peptic ulcer disease in the United States.

NOTE: This objective was removed from the final HP 2020 release.

**Aggregated Age-Adjusted Rate of Hospitalizations for Peptic Ulcer Disease, Eureka County and Nevada, 2000 - 2008\*.**



The average hospitalization rate for peptic ulcer disease in Eureka County was lower than the Nevada rate for the combined years 2000 through 2008 and met the Healthy People target rate of 46 per 100,000 population.

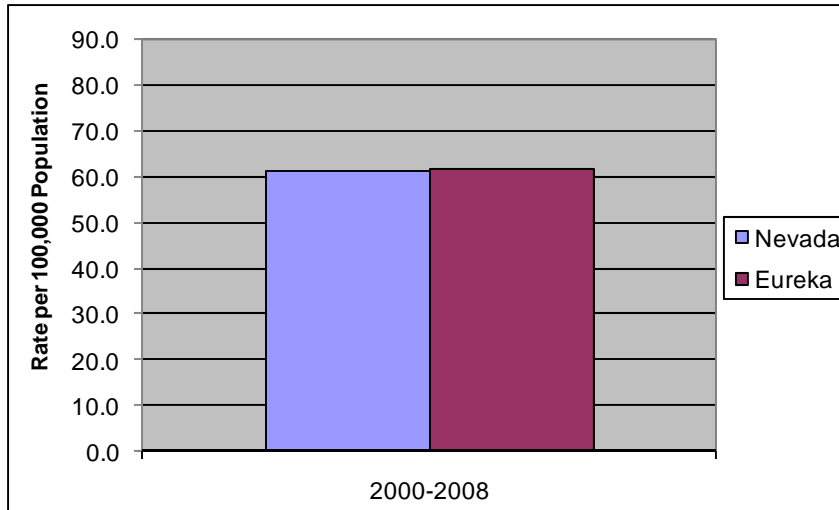
\*These rates are age-adjusted to the 2000 U.S. standard population. The Nevada data are from the National Electronic Telecommunications System for Surveillance (NEDSS).

# Injury and Violence Prevention (IVP)

**Healthy People 2010 Objective (15-1):** Reduce hospitalizations for non-fatal head injuries.

**Healthy People 2020 Objective IVP HP2020-2.2:** Reduce hospitalizations for nonfatal traumatic brain injuries.

**Aggregated Hospitalization Rate for Non-Fatal Head Injuries, Eureka County and Nevada, 2000 - 2008.\***



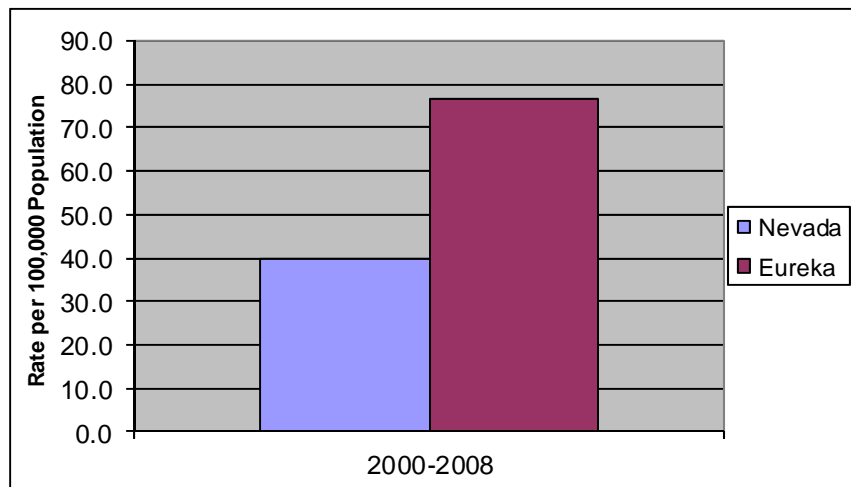
Eureka County's average rate of nonfatal head injuries was higher than the Nevada rate for the combined years 2000 through 2008, and almost 50 percent higher than the Healthy People 2010 target rate of 41.2 per 100,000 population.

**Healthy People 2010 Objective (15-13):** Reduce deaths caused by unintentional injuries.

**Healthy People 2020 Objective IVP HP2020-11:** Reduce unintentional injury deaths.

**Aggregated Age-Adjusted Death Rate Caused by Unintentional Injuries, Eureka County and Nevada, 2000 - 2008.\***

The unintentional injury mortality rate for the combined years 2000 through 2008 was almost twice as high in Eureka County than in Nevada, and more than four times as high as the Healthy People 2010 target rate of 17.1 per 100,000 population.

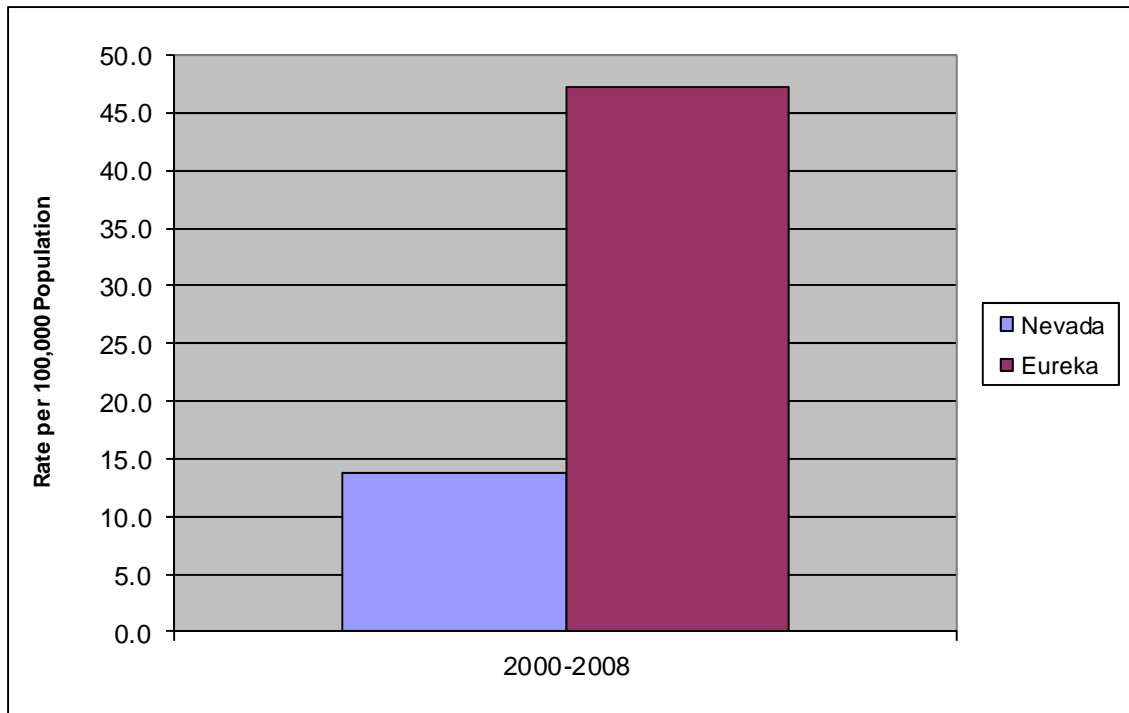


\*The Nevada data are from the Nevada Inpatient Hospital Discharge Database (NIHDD).

**Healthy People 2010 Objective (15-15a.):** Reduce deaths caused by motor vehicle crashes.

**Healthy People 2020 Objective IVP HP2020-13:** Reduce motor vehicle crash-related deaths.

**Age-Adjusted Death Rate Caused by Motor Vehicle Crashes, Eureka County and Nevada, 2000 - 2008.\***



The motor vehicle crash mortality rate for the combined years 2000 through 2008 in Eureka County was triple that for Nevada, at 47.2 per 100,000 people.

The county rate was more than five times as high as the Healthy People 2010 target rate of 8 per 100,000 population.

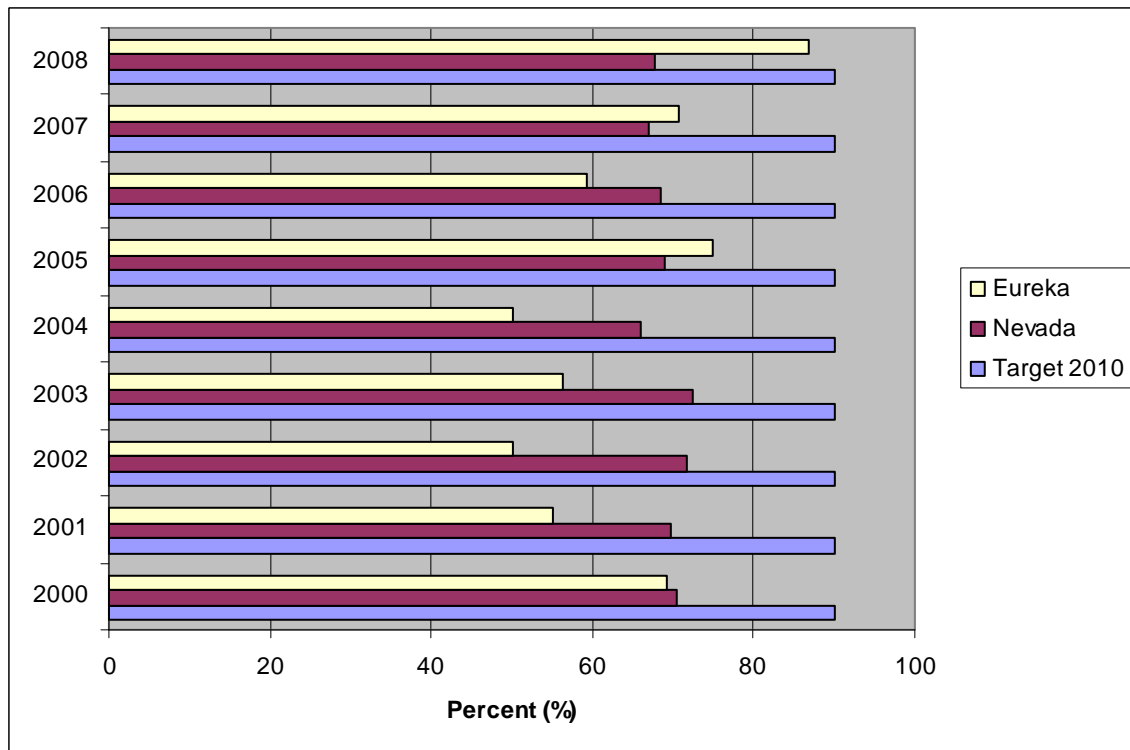
\*These rates are age-adjusted to the 2000 U.S. standard population. The Nevada data are from Nevada Vital Statistics Records - Mortality.  
Note: 2007 and 2008 are not final and are subject to change.

# Maternal, Infant, Child Health (MICH)

**Healthy People 2010 Objective (16-6b.):** Increase the proportion of pregnant women receiving early and adequate prenatal care.

**Healthy People 2020 Objective MICH HP2020-10:** Increase the proportion of women receiving early and adequate prenatal care.

**Proportion of Pregnant Women Receiving Early and Adequate Prenatal, Eureka County and Nevada, 2000 - 2008.\***



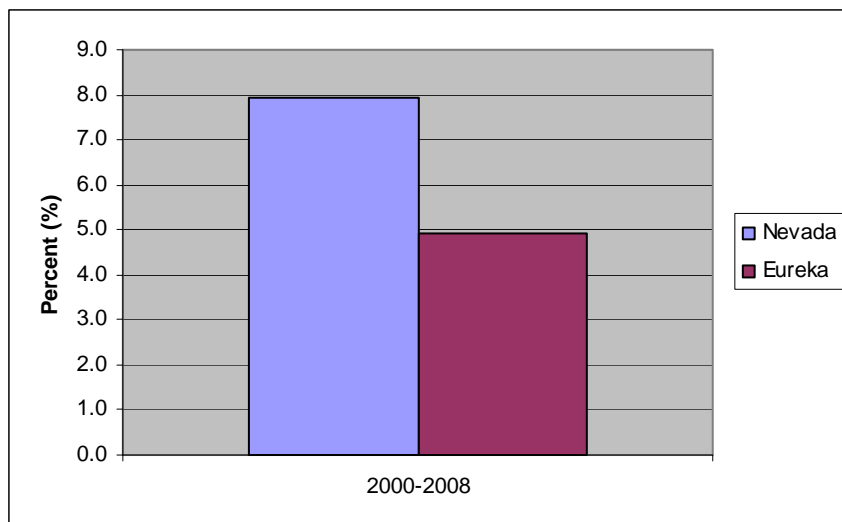
The percentage of pregnant women receiving prenatal care in their first trimester of pregnancy fluctuated from 2000-2008 for both the state and Eureka County. The Healthy People 2010 target rate of 90 percent was not reached by either region, however, Eureka County improved, with a rate of 87.0 percent in 2008.

\*The Nevada data are from Nevada Vital Statistics Records - Natality.  
Note: 2008 data are not final and are subject to change.

**Healthy People 2010 Objective (16-10a.):** Reduce the proportion of low birth weight infants.

**Healthy People 2020 Objective MICH HP2020-8.1:** Reduce the proportion of low birth weight infants.

**Aggregated Proportion of Low Birth Weight Infants, Eureka County and Nevada, 2000 - 2008.\***



The average rate of low birth weight infants in Eureka County was lower than that in Nevada for the combined years 2000 through 2008.

Eureka County met the Healthy People 2010 target of 5 percent.

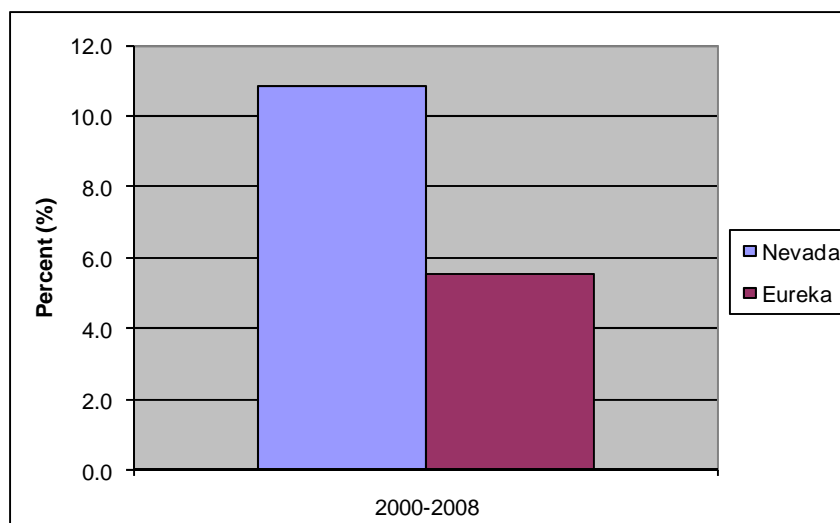
**Healthy People 2010 Objective (16-11a.):** Reduce preterm birth, infants born prior to 37 completed weeks of gestation.

**Healthy People 2020 Objective MICH HP2020-9.1:** Reduce total preterm births.

**Aggregated Proportion of Pre-Term Births, Infants Born Prior to 37 Completed Weeks of Gestation, Eureka County and Nevada, 2000 - 2008.\***

The average percentage of pre-term births, infants born prior to 37 completed weeks of Gestation, was lower in Eureka County, almost one-half the state rate overall.

Eureka County met the Healthy People 2010 target of 7.6 percent.

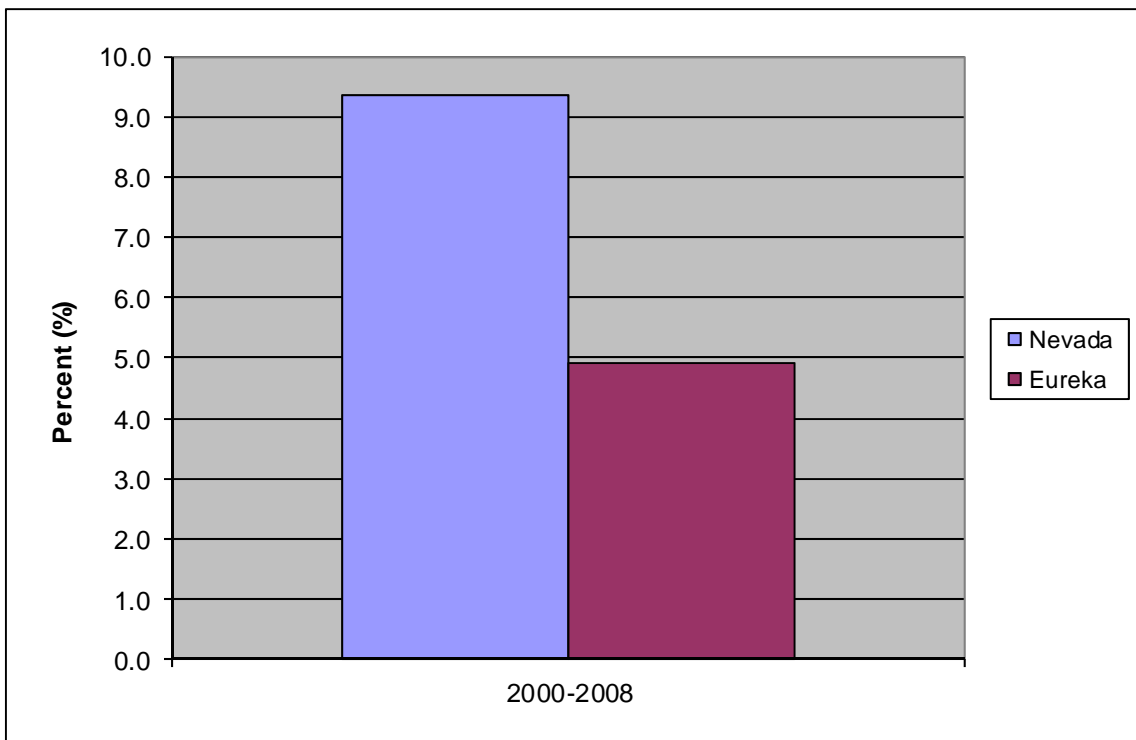


\* The Nevada data are from Nevada Vital Statistics Records- Natality.  
Note: 2008 data are not final and are subject to change.

**Healthy People 2010 Objective (16-11b.):** Reduce the proportion of live births at 32 to 36 completed weeks of gestation.

**Healthy People 2020 Objective MICH HP2020-9.2:** Reduce the proportion of live births at 34 to 36 completed weeks of gestation.

**Aggregated Proportion of Live Births at 32 to 36 Completed Weeks of Gestation, Eureka County and Nevada, 2000 - 2008.\***



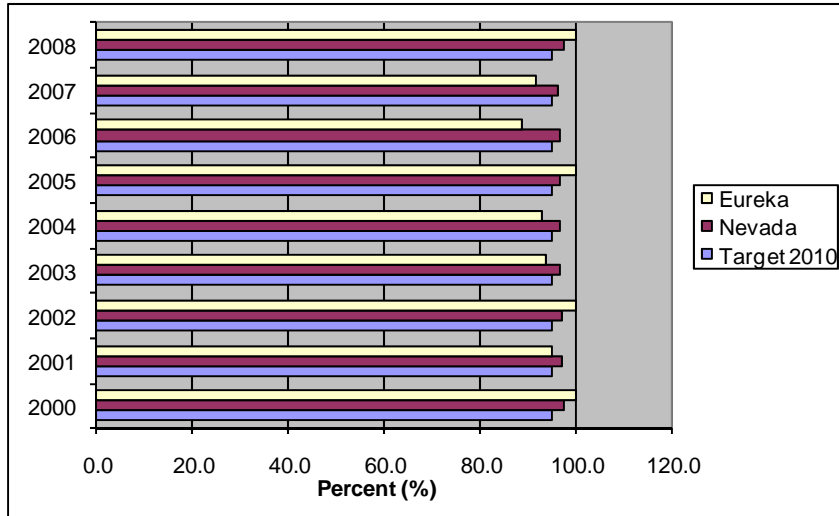
The average rate of live births at 32 to 36 completed weeks of gestation was lower for Eureka County than for Nevada in the combined years 2000 through 2008. Eureka County met the Healthy People 2010 target of 6.4 percent.

\*The Nevada data are from Nevada Vital Statistics Records - Natality. Note: 2008 data are not final and are subject to change.

**Healthy People 2010 Objective (16-17a.):** Increase the proportion of pregnant women abstaining from alcohol.

**Healthy People 2020 Objective MICH HP2020-11.1:** Increase abstinence from alcohol among pregnant women.

**Proportion of Pregnant Women, Aged 15 to 44, Abstaining from Alcohol, Eureka County and Nevada, 2000 - 2008.\***



The proportion of pregnant women abstaining from alcohol has fluctuated in Eureka County from 2000-2008.

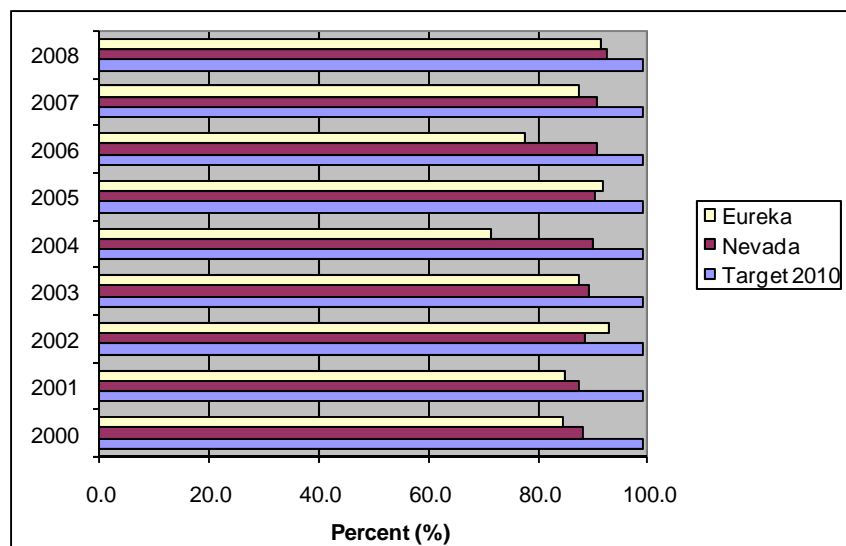
In 2008, Nevada and Eureka County both exceeded the Healthy People 2010 target of 95 percent, at 97.4 percent and 100 percent respectively.

**Healthy People 2010 Objective (16-17c.):** Increase the proportion of pregnant women, aged 15-44 years, abstaining from cigarette smoking.

**Healthy People 2020 Objective MICH HP2020-11.3:** Increase abstinence from cigarettes among pregnant women.

**Proportion of Pregnant Women Abstaining from Tobacco, Eureka County and Nevada, 2000 - 2008.\***

Neither Nevada nor Eureka County met the Healthy People 2010 objective of 99 percent for the proportion of pregnant women abstaining from tobacco during the years 2000 through 2008.



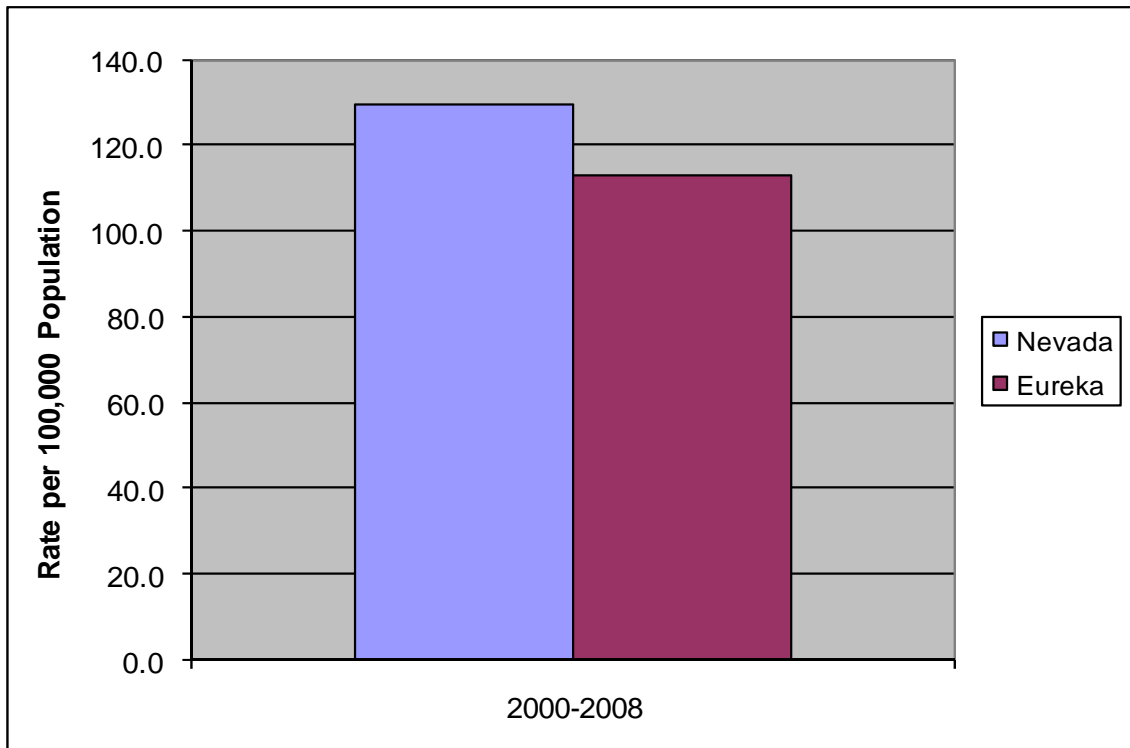
\*The Nevada data are from Nevada Vital Statistics Records - Natality.  
Note: 2008 data are not final and are subject to change.

# Respiratory Diseases (RD)

**Healthy People 2010 Objective (24-10.):** Reduce deaths from chronic obstructive pulmonary disease among adults.

**Healthy People 2020 Objective RD HP2020-10:** Reduce deaths from chronic obstructive pulmonary disease among adults.

**Aggregated Age-Adjusted Chronic Obstructive Pulmonary Disease Deaths, Eureka County and Nevada, 2000 –2008.\***



For the years 2000—2008, the average rate for chronic obstructive pulmonary disease mortality was 13 percent higher in the state of Nevada than in Eureka County.

Both the state and the county rates were at least double the Healthy People 2010 target rate of 62.3 per 100,000 population.

\*These rates are age-adjusted to the 2000 U.S. standard population. The Nevada data are from Nevada Vital Statistics Records - Mortality.  
Note: 2007 and 2008 data are not final and are subject to change.



## Healthy People 2010: Eureka County Indicator Exemptions

The following Healthy People 2010 indicators were not reported in the Eureka County Report due to a lack of available data:

- Adolescent Health (AH):
  - AH HP2020-1c: Increase the percentage of students whose reading skills are at or above the proficient achievement level for their grade.
  - AH HP2020-1d: Increase the percentage of students whose mathematical skills are at or above the proficient achievement level for their grade.
- Early and Middle Childhood (EMC):
  - EMC HP2020-3: Increase the proportion of elementary, middle, and senior high schools that require school health education.
- Family Planning (FP):
  - FP HP2020-9c: Increase the proportion of female adolescents aged 15 years who have never had sexual intercourse.
  - FP HP2020-9d: Increase the proportion of male adolescents aged 15 who have never had sexual intercourse.
  - FP HP2020-10e: The proportion of sexually active females aged 15 to 19 who used a condom at last intercourse.
  - FP HP2020-10f: The proportion of sexually active males aged 15 to 19 who used a condom at last intercourse.
- Immunizations and Infectious Diseases (IID):
  - IID HP2020-18: Percentage of children aged 19 to 35 months who receive recommended vaccines.
  - IID HP2020-20: Increase the percentage of children aged 19 to 35 months who receive the recommended vaccines.
- Injury and Violence Prevention (IVP):
  - IVP HP2020-13: Reduce physical fighting among adolescents.
  - IVP HP2020-14: Reduce weapon carrying by adolescents on school property.
- Mental Health and Mental Disorders (MHMD):
  - MHMD HP2020-2: Proportion of adolescents, grades 9 through 12, reporting suicide attempts in the past 12 months.
- Nutrition and Weight Status (NWS):
  - NWS HP2020-5c: Reduce the proportion of adolescents, aged 12 to 19 years, who are overweight or obese.
- Occupational Safety and Health (OSH):
  - OSH HP2020-7a: Work-related injury death rate, aged 16 years and older.
- Oral Health (OH):
  - OH HP2020-6a: Proportion of children aged 3 to 5 years with dental caries in primary and permanent teeth.

- OH HP2020-7a: Proportion of children aged 3 to 5 years with untreated dental decay.
  - OH HP2020-10b: Increase the proportion of children aged 8 years and older who have received dental sealants in their molar teeth.
- Physical Activity and Fitness (PAF):
  - PAF HP2020-7: Increase the proportion of adolescents that meet the current physical activity guidelines for aerobic physical activity and for muscle-strengthening activity.
- Sexually Transmitted Diseases (STD):
  - STD HP2020-3a: Reduce the proportion of females, aged 15 to 24 years with Chlamydia trachomatis infections attending family planning clinics.
- Substance Abuse (SA):
  - SA HP2020-4: Percentage of adolescents who report they rode during the previous 30 days with a driver who had been drinking alcohol, grades 9 through 12.
  - SA HP2020-7d: Proportion of adolescents engaging in binge drinking of alcohol.
  - SA HP2020-9b: Proportion of adolescents in the 10<sup>th</sup> grade reporting steroid use.
  - SA HP2020-9c: Proportion of adolescents in the 12<sup>th</sup> grade reporting steroid use.
  - SA HP1010-10: Reduce the proportion of adolescents who use inhalants.
- Tobacco Use (TU):
  - TU HP2020-6b: Proportion of adolescents reporting cigarette use in the past month.
  - TU HP2020-6c: Proportion of adolescents reporting spit tobacco use in the past month.

The following Healthy People 2010 indicators were not reported in the Eureka County Report due to a lack of available data, counts of 0:

- Cancer (C):
  - C HP2020-4: Cervical cancer death rate.
  - C HP2020-5: Colorectal cancer death rate.
  - C HO2020-6: Oropharyngeal cancer death rate.
  - C HP2020-8: Melanoma cancer death rate.
- Food Safety (FS):
  - FS HP2020-3b: Rate of reported cases of Escherichia Coli 0157:H7.
  - FS HP2020-3c: Rate of reported cases of Listeriosis.
- Immunizations and Infectious Diseases (IID):
  - IID HP2020-3: Crude rate of reported new cases of Hepatitis A.
  - IID HP2020-4: Crude rate of reported cases of Meningococcal disease.
  - IID HP2020-5: Crude Rate of reported new cases of Tuberculosis.
- Injury and Violence Prevention (IVP):
  - IVP HP2020-18b: Hospitalization rate for nonfatal spinal cord injuries.

- IVP HP2020-6: Pedestrian death rate on public roads.
- IVP HP2020-26a: Reduce fall related deaths in all persons.
- IVP HP2020-2: Death rate from homicides.
- Maternal, Infant, Child Health (MICH):
  - MICH HP2020-15f: Reduce infant deaths related to birth defects.
  - MICH HP2020-15g: Reduce infant deaths related to birth defects (congenital heart defects).
  - MICH HP2020-2a: Death rate of adolescents aged 10 to 14 years.
  - MICH HP2020-2b: Death rate of adolescents aged 15 to 19 years.
- Sexually Transmitted Diseases (STD):
  - STD HP2020-4: Reduce gonorrhea rate for males and females.
  - STD HP2020-5: Reduce the rate of primary and secondary syphilis.

The following Healthy People 2010 indicators were not reported in the Eureka County Report due to a lack of available data, counts below 5 but greater than 0:

- Blood Disorders and Blood Safety (BDBS):
  - BDBS HP2020-2: Reduce hospitalizations for sickle cell disease among children aged 9 years and younger.
- Cancer (C):
  - C HP2020-3: Breast cancer death rate.
  - C HO2020-7: Prostate cancer death rate.
- Diabetes (D):
  - D HP2020-3: Diabetes-related death rate.
- Family Planning (FP):
  - FP HP2020-8: Reduce pregnancy rates among adolescent females, aged 15 to 17 and aged 18 to 19.
- Food Safety (FS):
  - FS HP2020-3d: Rate of reported cases of Salmonella.
- Heart Disease and Stroke (HDS):
  - HDS HP2020-3: Stroke death rate.
- Human Immunodeficiency Virus (HIV):
  - HIV HP2020-1: Reduce acquired immunodeficiency syndrome.
  - HIV HP2020-4: Reduce the new cases of human immunodeficiency virus/acquired immunodeficiency syndrome (HIV/AIDS) diagnosed among adults and adolescents.
  - HIV HP2020-7: HIV infection death rate.
- Immunizations and Infectious Diseases (IID):
  - IID HP2020-14: Reduce or eliminate cases of vaccine preventable diseases.
- Injury and Violence Prevention (IVP):
  - IVP HP2020-3: Firearm related death rate.
  - IVP HP2020-19a: Death rate caused by poisoning.
  - IVP HP2020-27: Death rate from drowning.
- Mental Health and Mental Disorders (MHMD):
  - MHMD HP2020-1: Suicide death rate.
- Maternal, Infant, Child Health (MICH):

- MICH HP2020-15a: Fetal deaths at 20 or more completed weeks of gestation.
- MICH HP2020-15c: Infant death rate (within 1 year of life).
- MICH HP2020-15d: Neonatal death rate (within the first 28 days of life).
- MICH HP2020-15e: Postneonatal death rate (between 28 days and 1 year of life).
- MICH HP2020-1a: Death rate of children aged 1 to 4 years.
- MICH HP2020-1b: Death rate of children aged 5 to 9 years.
- MICH HP2020-2c: Death rate of young adults aged 20 to 24 years.
- MICH HP2020-7b: Proportion of very low-birth weight infants.
- MICH HP2020-8c: Proportion of live births at less than 32 completed weeks of gestation.
- Respiratory Diseases (RD):
  - RD HP2020-1a: Reduce hospitalizations for asthma in children under age 5 years.
  - RD HP2020-1b: Reduce hospitalizations for asthma in children and adults aged 5 to 64 years old.
  - RD HP2020-1c: Reduce hospitalizations for asthma in adults aged 65 years and older.
- Substance Abuse (SA):
  - SA HP2020-2: Drug induced death rate.

The following Healthy People 2010 indicators were not reported in the Eureka County Report due to a lack of available data, less than 50 BRFSS respondents:

- Access to Quality Health Services (AHS):
  - AS HP2020-1: Persons reporting health insurance coverage.
- Cancer (C):
  - C HP2020-14: Increase the proportion of women aged 18 years and older who have received a cervical cancer screening based on the most current guidelines.
  - C HP2020-15a: Increase the proportion of adults who receive a colorectal cancer screening.
  - C HP2020-15b: Increase the proportion of adults aged 50+ who have ever had a sigmoidoscopy or a colonoscopy.
  - C HP2020-16: Increase the proportion of women aged 40 years and older who have ever received a breast cancer screening based on the most recent guidelines.
- Diabetes (D):
  - D HP2020-1: Proportion of persons with diabetes who receive formal diabetes education.
  - D HP2020-2: Increase the proportion of adults with diabetes whose condition has been diagnosed.
  - D HP2020-6: Increase the proportion of adults with diabetes who have a glycosylated hemoglobin measurement at least twice a year.

- D HP2020-8: Increase the proportion of adults with diabetes who have had at least an annual foot examination.
- Heart Disease and Stroke (HDS):
  - HDS HP2020-13a: Proportion of adults with high blood pressure.
  - HDS HP2020-7: Proportion of adults with high blood cholesterol levels.
  - HDS HP2020-8: Proportion of adults having had their blood cholesterol checked within the preceding 5 years.
- Immunizations and Infectious Diseases (IID):
  - IID HP2020-24a: Proportion of adults aged 65 years and older who are vaccinated against influenza.
  - IID HP2020-24b: Proportion of adults aged 65 and older who have ever received a pneumococcal vaccination.
- Injury and Violence Prevention (IVP):
  - IVP HP2020-8: Proportion of people using safety belts.
- Nutrition and Weight Status (NWS):
  - NWS HP2020-1: Proportion of adults who are at a healthy weight.
  - NWS HP2020-2: Proportion of adults who are obese.
- Oral Health (OH):
  - OH HP2020-8a: Proportion of older adults aged 65 years and older reporting having all their natural teeth extracted.
- Physical Activity and Fitness (PAF):
  - PAF HP2020-1: Proportion of adults who reengage in no leisure time physical activity.
  - PAF HP2020-6a: Increase the proportion of adults who engage in aerobic physical activity of at least moderate intensity for at least 150 minutes/week or 75 minutes/week of vigorous intensity or equivalent combination.
  - PAF HP2020-6b: Increase the proportion of adults who engage in aerobic physical activity of at least moderate intensity for more than 300 minutes/week or more than 150 minutes/week of vigorous intensity or equivalent combination.
- Substance Abuse (SA):
  - SA HP2020-7c: Proportion of adults aged 18 years and older engaging in binge drinking of alcohol.
- Tobacco Use (TU):
  - TU HP2020-5a: Proportion of cigarette smoking adults.
  - TU HP2020-8a: Proportion of adults reporting smoking cessation attempts in the past year.