

Impact Analysis: Opioid Prescription Patterns Pre and Post Implementation of AB 474

Prescription Drug Monitoring Program Data, January 2017 - May 2018

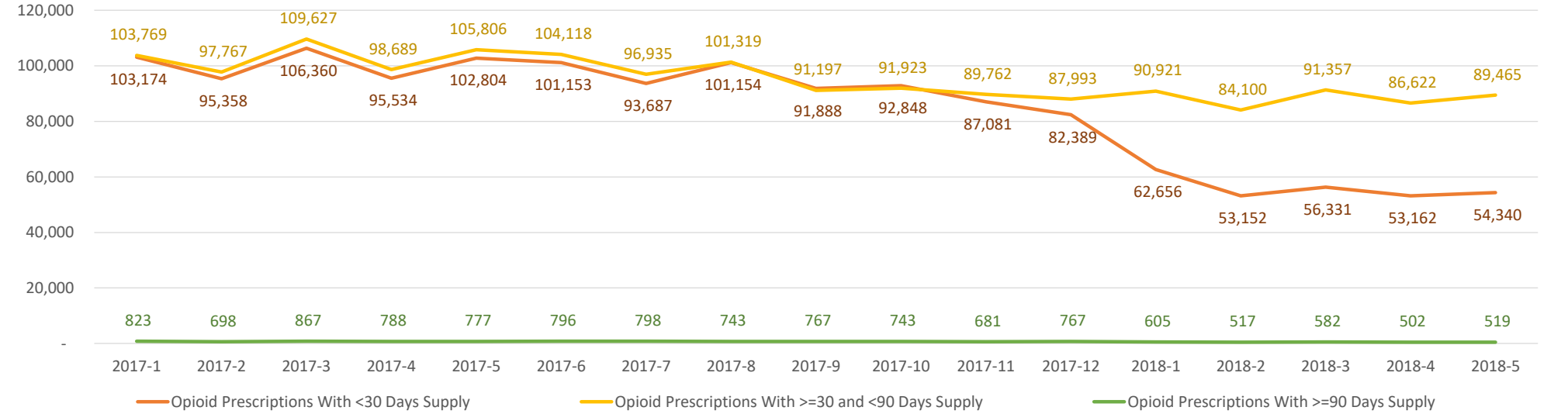
Summary Highlights:

- From January of 2017 to May of 2018, there was a 31% decrease in the rate of opioid prescriptions per 100 Nevada residents.
 - Opioid prescriptions with less than a 30 days supply decreased by 48%.
 - Opioid prescriptions with greater than or equal to a 30 days supply and less than a 90 days supply decreased by 15%.
 - Opioid prescriptions with greater than or equal to a 90 days supply decreased by 38%.
- All Nevada counties observed a decrease in both the number of and rate of opioid prescriptions by month, with the decrease in rates ranging from 14% (Lincoln) to 44% (Esmeralda).
- The number of prescriptions and unique patients receiving less than 50 MMEs per month decreased 27% from January of 2017 to May of 2018.
- The number of prescriptions and unique patients receiving 50 MMEs to 90 MMEs per month decreased approximately 44% from January of 2017 to May of 2018.
- The number of prescriptions and unique patients receiving greater than 90 MMEs per month decreased 32% from January of 2017 to May of 2018.
- Diagnosis information is available for 2018 only (January - May):
 - Opioid Related Disorders (ICD-10-CM code F11) was the third most common diagnosis code on prescriptions with less than a 30 days supply, the tenth most common diagnosis code on prescriptions with a 30-89 days supply, and not one of the top ten diagnoses on prescriptions with a 90 day or greater days supply.
 - Dorsalgia (back pain) was the most common diagnosis among all opioid prescriptions, regardless of the days supply on the prescription.
- The number of individuals who were co-prescribed Opioid and Benzodiazepines during the same month also decreased significantly, by 41% in Nevada overall.

Opioid Prescription Counts and Rates per 100 Population For Less Than and Greater Than 30 Days and 90 Days by Month, January 2017 - May 2018

	Opioid Prescriptions With <30 Days Supply		Opioid Prescriptions With >=30 and <90 Days Supply		Opioid Prescriptions With >=90 Days Supply		Total Opioid Prescriptions by Month	
	N	Rate per 100 Population	N	Rate per 100 Population	N	Rate per 100 Population	N	Rate per 100 Population
2017-1	103,174	3.46	103,769	3.48	823	0.03	207,766	6.96
2017-2	95,358	3.19	97,767	3.28	698	0.02	193,823	6.49
2017-3	106,360	3.56	109,627	3.67	867	0.03	216,854	7.26
2017-4	95,534	3.20	98,689	3.31	788	0.03	195,011	6.53
2017-5	102,804	3.44	105,806	3.54	777	0.03	209,387	7.01
2017-6	101,153	3.39	104,118	3.49	796	0.03	206,067	6.90
2017-7	93,687	3.14	96,935	3.25	798	0.03	191,420	6.41
2017-8	101,154	3.39	101,319	3.39	743	0.02	203,216	6.81
2017-9	91,888	3.08	91,197	3.05	767	0.03	183,852	6.16
2017-10	92,848	3.11	91,923	3.08	743	0.02	185,514	6.21
2017-11	87,081	2.92	89,762	3.01	681	0.02	177,524	5.95
2017-12	82,389	2.76	87,993	2.95	767	0.03	171,149	5.73
2018-1	62,656	2.08	90,921	3.02	605	0.02	154,182	5.12
2018-2	53,152	1.76	84,100	2.79	517	0.02	137,769	4.57
2018-3	56,331	1.87	91,357	3.03	582	0.02	148,270	4.92
2018-4	53,162	1.76	86,622	2.88	502	0.02	140,286	4.66
2018-5	54,340	1.80	89,465	2.97	519	0.02	144,324	4.79

% Change -47.33% -47.81% -13.78% -14.57% -36.94% -37.52% -30.54% -31.17%



Note: Annual population estimates were used for the denominator each month because monthly populations are not available. Therefore this representation is not comparable to **annual** prescription rates per 100 population.

Department of Health and Human Services
Office of Analytics

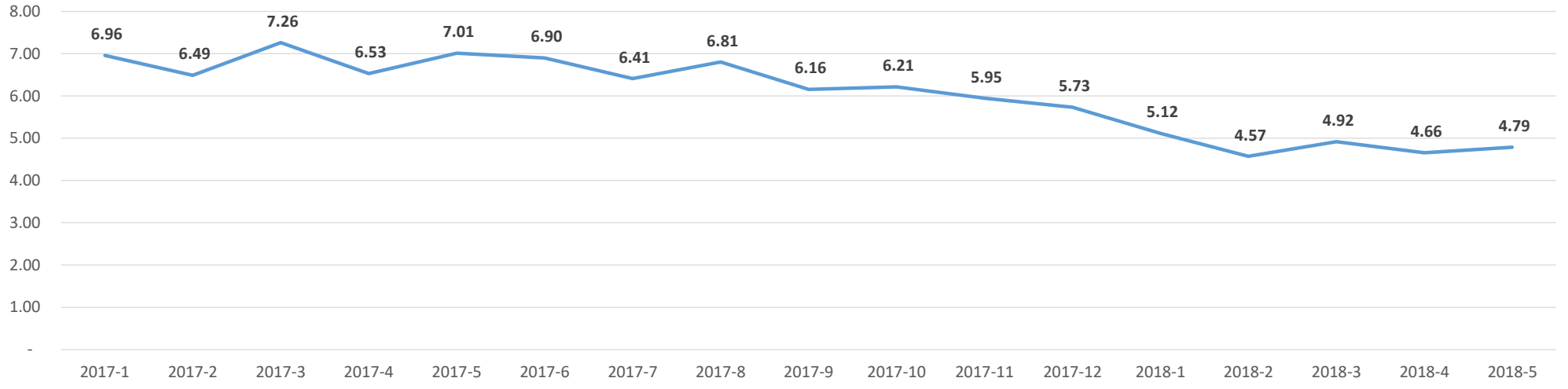
Opioid Prescription Counts by Month and Resident County, January 2017 - May 2018

	Carson City	Churchill	Clark	Douglas	Elko	Esmeralda	Eureka	Humboldt	Lander	Lincoln	Lyon	Mineral	Nye	Pershing	Storey	Washoe	White Pine	Total
2017-1	4,740	2,229	147,154	4,129	3,063	56	161	1,053	414	392	5,545	499	5,650	391	469	31,051	770	207,766
2017-2	4,292	2,034	137,943	3,700	2,764	45	142	984	391	335	5,194	430	5,232	372	464	28,756	745	193,823
2017-3	4,763	2,343	154,079	4,265	3,187	62	144	1,069	476	330	5,894	496	5,859	394	499	32,193	801	216,854
2017-4	4,343	2,052	138,350	3,810	2,792	49	142	973	415	360	5,285	505	5,349	338	440	29,017	791	195,011
2017-5	4,729	2,293	148,437	4,002	3,097	50	147	943	405	481	5,536	465	5,626	409	501	31,415	851	209,387
2017-6	4,462	2,207	146,554	3,994	2,898	53	160	982	426	434	5,359	553	5,525	384	477	30,792	807	206,067
2017-7	4,215	2,134	136,304	3,624	2,954	56	133	922	424	370	5,168	463	5,108	306	421	28,024	794	191,420
2017-8	4,734	2,310	143,905	4,046	3,006	50	142	986	408	384	5,484	530	5,399	368	468	30,189	807	203,216
2017-9	4,302	2,118	129,413	3,734	2,852	48	139	912	385	390	5,125	501	4,977	317	446	27,453	740	183,852
2017-10	4,325	2,094	129,883	3,776	2,894	37	128	938	381	393	5,136	475	5,113	330	428	28,420	763	185,514
2017-11	4,113	1,870	123,342	3,532	2,829	36	124	931	390	376	4,935	387	4,788	325	438	28,373	735	177,524
2017-12	3,995	1,905	118,943	3,582	2,443	32	107	879	326	349	4,788	400	4,577	308	436	27,391	688	171,149
2018-1	3,672	1,676	107,280	3,367	1,977	31	95	693	301	375	4,336	415	4,356	275	375	24,306	652	154,182
2018-2	3,247	1,487	96,206	2,977	1,785	36	85	668	267	314	3,822	356	4,040	248	315	21,478	438	137,769
2018-3	3,465	1,609	103,436	3,218	1,928	34	98	692	273	339	4,156	395	4,307	276	372	23,073	599	148,270
2018-4	3,262	1,457	98,103	2,977	1,918	33	92	638	261	328	4,006	329	4,114	261	320	21,584	603	140,286
2018-5	3,323	1,572	101,108	3,197	2,000	31	96	704	289	335	4,154	347	4,274	281	363	21,648	602	144,324
% Change	-29.89%	-29.48%	-31.29%	-22.57%	-34.70%	-44.64%	-40.37%	-33.14%	-30.19%	-14.54%	-25.09%	-30.46%	-24.35%	-28.13%	-22.60%	-30.28%	-21.82%	-30.54%

Opioid Prescription Rates per 100 Population by Month and Resident County, January 2017 - May 2018

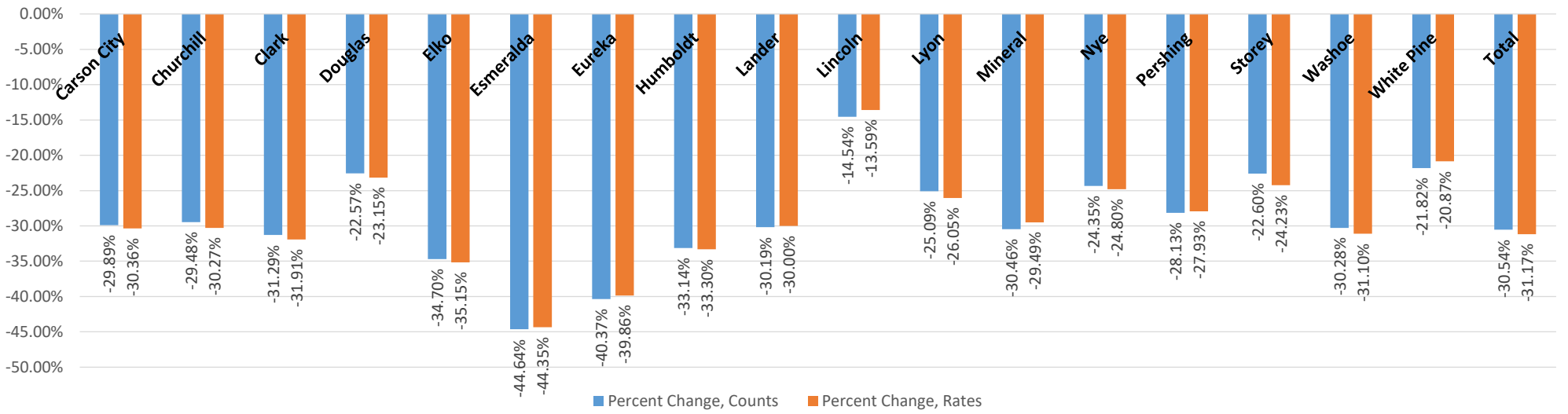
	Carson City	Churchill	Clark	Douglas	Elko	Esmeralda	Eureka	Humboldt	Lander	Lincoln	Lyon	Mineral	Nye	Pershing	Storey	Washoe	White Pine	Total
2017-1	8.54	8.73	6.72	8.50	5.62	5.83	8.51	6.24	6.67	7.87	10.19	11.06	12.27	5.89	11.17	6.85	7.47	6.96
2017-2	7.73	7.96	6.30	7.61	5.07	4.69	7.51	5.83	6.30	6.72	9.54	9.53	11.36	5.61	11.05	6.34	7.23	6.49
2017-3	8.58	9.17	7.03	8.78	5.85	6.46	7.61	6.33	7.67	6.62	10.83	10.99	12.72	5.94	11.88	7.10	7.77	7.26
2017-4	7.82	8.03	6.32	7.84	5.12	5.10	7.51	5.77	6.68	7.23	9.71	11.19	11.62	5.09	10.48	6.40	7.68	6.53
2017-5	8.52	8.98	6.78	8.23	5.68	5.21	7.77	5.59	6.52	9.65	10.17	10.31	12.22	6.16	11.93	6.93	8.26	7.01
2017-6	8.04	8.64	6.69	8.22	5.32	5.52	8.46	5.82	6.86	8.71	9.85	12.26	12.00	5.79	11.36	6.79	7.83	6.90
2017-7	7.59	8.36	6.22	7.46	5.42	5.83	7.03	5.46	6.83	7.43	9.50	10.26	11.09	4.61	10.03	6.18	7.71	6.41
2017-8	8.53	9.04	6.57	8.33	5.52	5.21	7.51	5.84	6.57	7.71	10.08	11.75	11.72	5.55	11.15	6.66	7.83	6.81
2017-9	7.75	8.29	5.91	7.68	5.23	5.00	7.35	5.40	6.20	7.83	9.42	11.10	10.81	4.78	10.62	6.06	7.18	6.16
2017-10	7.79	8.20	5.93	7.77	5.31	3.85	6.77	5.56	6.14	7.89	9.44	10.53	11.10	4.97	10.19	6.27	7.40	6.21
2017-11	7.41	7.32	5.63	7.27	5.19	3.75	6.55	5.52	6.28	7.55	9.07	8.58	10.40	4.90	10.43	6.26	7.13	5.95
2017-12	7.20	7.46	5.43	7.37	4.48	3.33	5.66	5.21	5.25	7.01	8.80	8.87	9.94	4.64	10.38	6.04	6.68	5.73
2018-1	6.57	6.49	4.85	6.88	3.60	3.25	5.06	4.10	4.86	7.61	7.87	9.33	9.40	4.16	8.74	5.30	6.40	5.12
2018-2	5.81	5.76	4.35	6.08	3.25	3.77	4.53	3.95	4.31	6.37	6.93	8.00	8.72	3.75	7.34	4.68	4.30	4.57
2018-3	6.20	6.23	4.68	6.57	3.51	3.56	5.22	4.09	4.41	6.88	7.54	8.88	9.30	4.17	8.67	5.03	5.88	4.92
2018-4	5.84	5.64	4.44	6.08	3.50	3.46	4.90	3.77	4.22	6.66	7.27	7.39	8.88	3.94	7.46	4.71	5.92	4.66
2018-5	5.95	6.09	4.57	6.53	3.64	3.25	5.12	4.16	4.67	6.80	7.54	7.80	9.23	4.25	8.46	4.72	5.91	4.79
% Change	-30.36%	-30.27%	-31.91%	-23.15%	-35.15%	-44.35%	-39.86%	-33.30%	-30.00%	-13.59%	-26.05%	-29.49%	-24.80%	-27.93%	-24.23%	-31.10%	-20.87%	-31.17%

Nevada Opioid Prescription Rate per 100 Population, by Month, January 2017 - May 2018



Note: Annual population estimates were used for the denominator each month because monthly populations are not available. Therefore this representation is not comparable to **annual** prescription rates per 100 population.

Overall Percent Change (from January of 2017 to May of 2018) in Opioid Prescription Rates per 100 Population, By Resident County



Number of Opioid Prescriptions and Patients with Less Than 50 MMEs per Month, by Month and Resident County, January 2017 - May 2018

Carson City - Lander Counties

	Carson City		Churchill		Clark		Douglas		Elko		Esmeralda		Eureka		Humboldt		Lander	
	Prescriptions	Patients	Prescriptions	Patients	Prescriptions	Patients	Prescriptions	Patients	Prescriptions	Patients	Prescriptions	Patients	Prescriptions	Patients	Prescriptions	Patients	Prescriptions	Patients
2017-1	3,149	2,657	1,540	1,243	95,995	83,457	2,620	2,235	2,209	1,863	36	32	89	71	749	614	329	260
2017-2	2,800	2,459	1,380	1,151	90,225	79,639	2,398	2,063	1,953	1,697	31	28	75	63	680	591	306	251
2017-3	3,153	2,679	1,593	1,271	100,772	86,252	2,747	2,310	2,288	1,913	42	37	81	64	760	604	368	293
2017-4	2,858	2,477	1,400	1,181	90,708	80,095	2,425	2,079	2,007	1,744	31	28	72	66	696	599	334	267
2017-5	3,165	2,656	1,537	1,257	97,547	83,811	2,582	2,201	2,235	1,884	37	35	77	63	645	554	320	246
2017-6	2,977	2,527	1,462	1,179	96,221	82,799	2,577	2,199	2,117	1,829	36	32	88	78	687	589	324	251
2017-7	2,881	2,454	1,409	1,157	89,646	78,158	2,360	2,035	2,154	1,808	40	38	79	67	643	546	332	278
2017-8	3,158	2,573	1,521	1,175	95,087	81,633	2,648	2,218	2,164	1,801	35	28	83	73	691	583	308	235
2017-9	2,891	2,425	1,423	1,166	86,557	76,002	2,440	2,087	2,053	1,741	29	28	86	69	658	553	298	246
2017-10	2,882	2,437	1,374	1,165	86,283	75,445	2,484	2,111	2,070	1,713	26	24	81	71	670	555	295	226
2017-11	2,750	2,358	1,239	1,008	80,686	70,506	2,256	1,941	2,095	1,751	26	25	75	62	679	562	303	248
2017-12	2,672	2,269	1,255	1,030	78,393	68,263	2,362	2,026	1,757	1,495	22	21	64	56	601	509	249	200
2018-1	2,496	2,187	1,203	1,004	72,762	63,980	2,342	1,999	1,470	1,240	25	23	64	56	521	455	236	183
2018-2	2,218	1,960	1,078	914	65,625	59,034	2,110	1,828	1,315	1,147	29	25	56	47	510	460	212	174
2018-3	2,366	2,025	1,194	986	70,622	61,696	2,261	1,950	1,422	1,243	24	21	73	63	530	452	207	172
2018-4	2,269	1,977	1,071	919	67,577	60,275	2,080	1,843	1,436	1,230	23	20	61	51	483	436	195	166
2018-5	2,280	1,971	1,170	976	69,184	60,399	2,249	1,948	1,530	1,298	24	19	66	54	519	459	218	178
% Change	-27.60%	-25.82%	-24.03%	-21.48%	-27.93%	-27.63%	-14.16%	-12.84%	-30.74%	-30.33%	-33.33%	-40.63%	-25.84%	-23.94%	-30.71%	-25.24%	-33.74%	-31.54%

Number of Opioid Prescriptions and Patients with more than 50 and Less Than 90 MMEs per Month, by Month and Resident County, January 2017 - May 2018

Carson City - Lander Counties

	Carson City		Churchill		Clark		Douglas		Elko		Esmeralda		Eureka		Humboldt		Lander	
	Prescriptions	Patients	Prescriptions	Patients	Prescriptions	Patients	Prescriptions	Patients	Prescriptions	Patients	Prescriptions	Patients	Prescriptions	Patients	Prescriptions	Patients	Prescriptions	Patients
2017-1	817	706	449	392	26,129	23,164	790	698	529	472	10	9	42	37	173	144	64	58
2017-2	771	700	415	378	24,375	21,997	682	626	505	464	7	7	42	35	170	145	56	52
2017-3	833	722	501	425	27,477	23,709	804	705	557	485	9	8	40	37	167	145	76	63
2017-4	760	673	435	384	24,747	22,172	746	684	495	451	7	6	44	40	142	124	48	44
2017-5	774	672	496	418	26,423	22,950	736	662	542	476	4	4	44	40	166	146	49	43
2017-6	729	647	504	428	26,251	22,716	761	673	479	428	9	9	48	47	176	146	64	54
2017-7	674	614	484	409	24,255	21,347	664	598	486	427	9	9	34	33	162	145	61	54
2017-8	822	671	521	429	25,613	22,215	762	652	504	442	7	5	43	39	164	143	61	51
2017-9	730	628	480	412	22,730	20,393	712	634	480	428	14	11	36	35	141	120	60	53
2017-10	736	635	501	422	23,229	20,684	715	617	491	439	7	6	29	26	149	126	60	50
2017-11	688	610	429	360	22,286	19,713	659	589	445	401	7	7	35	31	142	119	57	49
2017-12	648	572	443	387	20,599	18,142	636	571	400	354	6	6	31	27	156	138	44	40
2018-1	538	465	300	268	16,185	14,290	534	477	271	228	4	4	23	20	98	92	36	31
2018-2	483	446	277	250	14,355	12,965	457	418	276	241	4	4	24	24	92	82	31	30
2018-3	538	465	273	247	15,240	13,253	514	459	283	239	5	5	19	17	86	78	41	35
2018-4	472	430	273	245	14,053	12,619	464	425	282	240	5	5	23	21	83	75	42	34
2018-5	509	433	273	244	14,708	12,764	486	440	263	218	3	3	25	23	103	96	41	34
% Change	-37.70%	-38.67%	-39.20%	-37.76%	-43.71%	-44.90%	-38.48%	-36.96%	-50.28%	-53.81%	-70.00%	-66.67%	-40.48%	-37.84%	-40.46%	-33.33%	-35.94%	-41.38%

Number of Opioid Prescriptions and Patients with more than 90 MMEs per Month, by Month and Resident County, January 2017 - May 2018

Carson City - Lander Counties

	Carson City		Churchill		Clark		Douglas		Elko		Esmeralda		Eureka		Humboldt		Lander	
	Prescriptions	Patients	Prescriptions	Patients	Prescriptions	Patients	Prescriptions	Patients	Prescriptions	Patients	Prescriptions	Patients	Prescriptions	Patients	Prescriptions	Patients	Prescriptions	Patients
2017-1	774	586	240	195	25,030	18,383	719	565	325	256	10	8	30	26	131	98	21	17
2017-2	721	551	239	204	23,343	17,712	620	499	306	241	7	6	25	22	134	107	29	20
2017-3	777	585	249	204	25,830	18,525	714	536	342	254	11	7	23	19	142	100	32	26
2017-4	725	561	217	178	22,895	17,413	639	505	290	232	11	9	26	21	135	109	33	28
2017-5	790	578	260	197	24,467	17,854	684	536	320	248	9	7	26	17	132	100	36	27
2017-6	756	577	241	184	24,082	17,694	656	507	302	238	8	6	24	15	119	91	38	26
2017-7	660	522	241	188	22,403	16,919	600	482	314	241	7	6	20	15	117	90	31	23
2017-8	754	545	268	196	23,205	17,178	636	479	338	240	8	7	16	11	131	88	39	30
2017-9	681	511	215	170	20,126	15,514	582	469	319	249	5	5	17	14	113	85	27	22
2017-10	707	534	219	165	20,371	15,590	577	457	333	256	4	4	18	14	119	89	26	20
2017-11	675	524	202	164	20,370	15,567	617	472	289	235	3	3	14	11	110	87	30	25
2017-12	675	521	207	164	19,951	15,209	584	451	286	230	4	3	12	11	122	88	33	28
2018-1	638	476	173	134	18,333	13,956	491	379	236	177	2	2	8	6	74	60	29	23
2018-2	546	432	132	109	16,226	12,893	410	347	194	164	3	3	5	4	66	51	24	18
2018-3	561	431	142	109	17,574	13,288	443	347	223	168	5	5	6	5	76	63	25	20
2018-4	521	414	113	94	16,473	12,845	433	327	200	156	5	5	8	5	72	58	24	19
2018-5	534	409	129	107	17,216	12,907	462	348	207	159	4	4	5	4	82	57	30	22
% Change	-31.01%	-30.20%	-46.25%	-45.13%	-31.22%	-29.79%	-35.74%	-38.41%	-36.31%	-37.89%	-60.00%	-50.00%	-83.33%	-84.62%	-37.40%	-41.84%	42.86%	29.41%

Number of Opioid Prescriptions and Patients with Less Than 50 MMEs per Month, by Month and Resident County, January 2017 - May 2018

Lincoln - White Pine Counties

	Lincoln		Lyon		Mineral		Nye		Pershing		Storey		Washoe		White Pine	
	Prescriptions	Patients	Prescriptions	Patients	Prescriptions	Patients	Prescriptions	Patients	Prescriptions	Patients	Prescriptions	Patients	Prescriptions	Patients	Prescriptions	Patients
2017-1	258	223	3,603	3,061	322	271	3,639	3,181	277	224	295	249	20,160	17,011	514	413
2017-2	228	209	3,359	2,927	282	243	3,370	3,001	271	219	291	248	18,630	16,008	469	392
2017-3	234	189	3,861	3,193	322	267	3,793	3,258	290	231	311	267	20,857	17,242	503	397
2017-4	234	207	3,477	3,014	344	295	3,466	3,057	248	206	276	241	18,829	16,186	508	411
2017-5	318	236	3,648	3,094	323	274	3,669	3,178	311	253	315	266	20,388	16,901	562	442
2017-6	284	225	3,526	2,987	371	298	3,587	3,121	283	228	290	253	20,040	16,796	516	392
2017-7	236	208	3,427	2,929	312	266	3,351	2,942	222	184	266	225	18,279	15,584	536	416
2017-8	257	216	3,609	3,036	351	286	3,526	3,065	255	199	286	252	19,912	16,643	526	396
2017-9	257	227	3,397	2,942	330	276	3,318	2,914	228	182	292	256	18,175	15,586	474	378
2017-10	261	228	3,481	2,993	312	248	3,417	2,970	236	199	286	247	19,146	15,820	524	414
2017-11	257	218	3,275	2,816	242	207	3,180	2,759	230	194	292	250	19,183	15,162	476	374
2017-12	235	210	3,192	2,746	265	222	3,015	2,638	214	181	277	239	18,449	14,627	457	381
2018-1	259	211	3,002	2,597	303	262	2,945	2,584	205	166	250	218	17,146	13,594	455	368
2018-2	232	210	2,691	2,379	252	220	2,749	2,458	182	157	204	179	15,077	12,317	309	261
2018-3	241	213	2,912	2,528	285	239	2,940	2,539	210	178	230	203	16,318	12,992	422	344
2018-4	235	204	2,833	2,508	241	213	2,907	2,541	195	168	209	191	15,235	12,234	419	345
2018-5	235	201	2,926	2,496	249	207	3,006	2,597	201	163	238	208	15,133	12,515	412	345
% Change	-8.91%	-9.87%	-18.79%	-18.46%	-22.67%	-23.62%	-17.39%	-18.36%	-27.44%	-27.23%	-19.32%	-16.47%	-24.94%	-26.43%	-19.84%	-16.46%

Number of Opioid Prescriptions and Patients with more than 50 and Less Than 90 MMEs per Month, by Month and Resident County, January 2017 - May 2018

Lincoln - White Pine Counties

	Lincoln		Lyon		Mineral		Nye		Pershing		Storey		Washoe		White Pine	
	Prescriptions	Patients	Prescriptions	Patients	Prescriptions	Patients	Prescriptions	Patients	Prescriptions	Patients	Prescriptions	Patients	Prescriptions	Patients	Prescriptions	Patients
2017-1	78	70	1,045	930	104	91	1,025	901	70	62	92	83	5,919	5,254	139	117
2017-2	54	50	1,027	939	91	82	962	885	65	59	87	80	5,541	4,958	136	123
2017-3	49	46	1,136	965	89	80	1,033	909	74	61	97	88	6,233	5,356	151	131
2017-4	70	64	1,008	901	86	81	976	880	56	54	81	76	5,629	5,025	157	133
2017-5	81	67	1,062	924	80	76	1,019	888	56	54	94	88	6,033	5,257	149	123
2017-6	76	67	1,033	889	104	89	1,029	901	64	58	97	90	5,893	5,159	150	118
2017-7	75	68	995	878	81	73	907	805	53	46	85	77	5,357	4,762	127	109
2017-8	70	59	1,073	923	95	85	967	833	67	55	102	91	5,610	4,911	135	108
2017-9	79	72	1,014	900	97	85	877	768	41	36	82	74	5,065	4,529	119	100
2017-10	77	64	975	861	80	74	894	779	44	40	81	70	5,029	4,468	128	112
2017-11	75	61	954	844	82	72	848	755	54	49	81	69	5,041	4,432	135	106
2017-12	71	61	919	806	75	73	823	724	55	49	82	74	4,765	4,256	120	96
2018-1	72	63	751	669	62	57	718	629	34	32	48	41	3,568	3,212	109	92
2018-2	54	48	620	569	55	53	646	596	32	27	46	43	3,180	2,909	73	68
2018-3	59	53	701	619	59	51	710	609	35	30	61	53	3,338	2,921	88	80
2018-4	64	55	654	592	43	42	619	568	40	36	51	48	3,129	2,809	98	81
2018-5	60	54	677	598	58	49	679	582	39	34	61	56	3,143	2,793	110	93
% Change	-23.08%	-22.86%	-35.22%	-35.70%	-44.23%	-46.15%	-33.76%	-35.41%	-44.29%	-45.16%	-33.70%	-32.53%	-46.90%	-46.84%	-20.86%	-20.51%

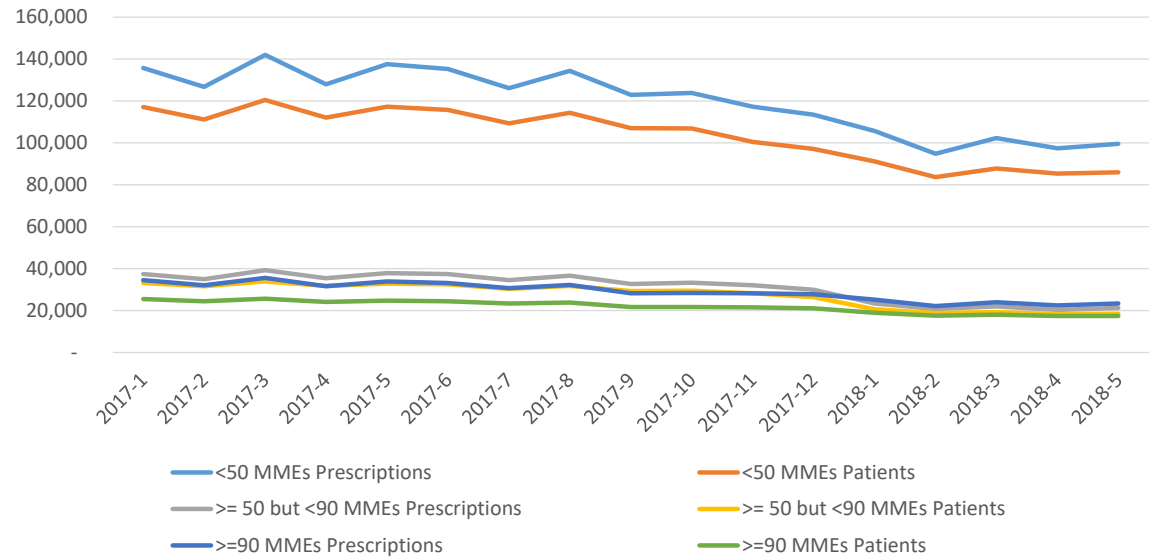
Number of Opioid Prescriptions and Patients with more than 90 MMEs per Month, by Month and Resident County, January 2017 - May 2018

Lincoln - White Pine Counties

	Lincoln		Lyon		Mineral		Nye		Pershing		Storey		Washoe		White Pine	
	Prescriptions	Patients	Prescriptions	Patients	Prescriptions	Patients	Prescriptions	Patients	Prescriptions	Patients	Prescriptions	Patients	Prescriptions	Patients	Prescriptions	Patients
2017-1	56	48	897	697	73	57	986	741	44	34	82	69	4,972	3,641	117	93
2017-2	53	47	808	654	57	49	900	691	36	30	86	69	4,585	3,476	140	104
2017-3	47	39	897	699	85	63	1,033	744	30	27	91	74	5,103	3,677	147	106
2017-4	56	48	800	631	75	62	907	692	34	27	83	63	4,559	3,454	126	99
2017-5	82	56	826	649	62	53	938	684	42	37	92	65	4,994	3,601	140	105
2017-6	74	52	800	624	78	64	909	671	37	30	90	64	4,859	3,501	141	104
2017-7	59	49	746	603	70	62	850	643	31	27	70	56	4,388	3,306	131	104
2017-8	57	50	802	624	84	64	906	663	46	36	80	60	4,667	3,383	146	105
2017-9	54	51	714	570	74	63	782	603	48	37	72	55	4,213	3,197	147	105
2017-10	55	47	680	553	83	63	802	610	50	38	61	48	4,245	3,132	111	88
2017-11	44	40	706	565	63	53	760	584	41	31	65	54	4,149	3,098	124	93
2017-12	43	40	677	550	60	47	739	552	39	32	77	59	4,177	3,076	111	88
2018-1	44	34	583	460	50	38	693	518	36	31	77	53	3,592	2,561	88	68
2018-2	28	24	511	429	49	38	645	505	34	29	65	51	3,221	2,419	56	45
2018-3	39	35	543	438	51	36	657	495	31	23	81	54	3,417	2,445	89	70
2018-4	29	26	519	424	45	32	588	459	26	22	60	48	3,220	2,364	86	67
2018-5	40	28	551	429	40	30	589	440	41	32	64	53	3,372	2,370	80	56
% Change	-28.57%	-41.67%	-38.57%	-38.45%	-45.21%	-47.37%	-40.26%	-40.62%	-6.82%	-5.88%	-21.95%	-23.19%	-32.18%	-34.91%	-31.62%	-39.78%

Nevada Opioid Prescriptions and Patients by MME per Month, by Month, January 2017 - May 2018

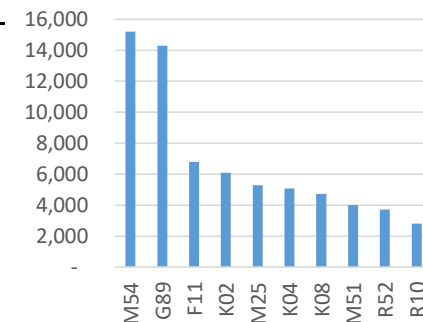
	<50 MMEs		≥ 50 but <90 MMEs		≥90 MMEs	
	Prescriptions	Patients	Prescriptions	Patients	Prescriptions	Patients
2017-1	135,784	117,065	37,475	33,188	34,507	25,514
2017-2	126,748	111,189	34,986	31,580	32,089	24,482
2017-3	141,975	120,467	39,326	33,935	35,553	25,685
2017-4	127,913	112,153	35,487	31,792	31,611	24,132
2017-5	137,679	117,351	37,808	32,888	33,900	24,814
2017-6	135,386	115,783	37,467	32,519	33,214	24,448
2017-7	126,173	109,295	34,509	30,454	30,738	23,336
2017-8	134,417	114,412	36,616	31,712	32,183	23,759
2017-9	122,906	107,078	32,757	29,278	28,189	21,720
2017-10	123,828	106,866	33,225	29,473	28,461	21,708
2017-11	117,244	100,441	32,018	28,267	28,262	21,606
2017-12	113,479	97,113	29,873	26,376	27,797	21,149
2018-1	105,684	91,127	23,351	20,670	25,147	18,976
2018-2	94,849	83,770	20,705	18,773	22,215	17,561
2018-3	102,257	87,844	22,050	19,214	23,963	18,032
2018-4	97,469	85,321	20,395	18,325	22,422	17,365
2018-5	99,640	86,034	21,238	18,514	23,446	17,455
% Change	-26.62%	-26.51%	-43.33%	-44.21%	-32.05%	-31.59%



Opioid Prescriptions For Both Less Than and Greater Than 30 Days and 90 Days, by Top 10 ICD 10 Group, 2018 (Jan - May)

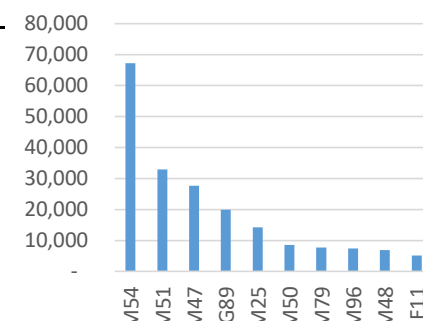
< 30 Days Supply

Top 10 Diagnosis Groups	ICD 10 Group	Prescriptions
Dorsalgia	M54	15,192
Diseases of the Nervous System, Pain, not elsewhere classified	G89	14,298
Opioid related disorders	F11	6,786
Dental caries	K02	6,090
Other joint disorder, not elsewhere classified	M25	5,286
Diseases of pulp and periapical tissues	K04	5,081
Other disorders of teeth and supporting structures	K08	4,721
Thoracic, thoracolumbar, and lumbosacral intervertebral disc disorders	M51	4,011
Pain, unspecified	R52	3,712
Abdominal and pelvic pain	R10	2,804



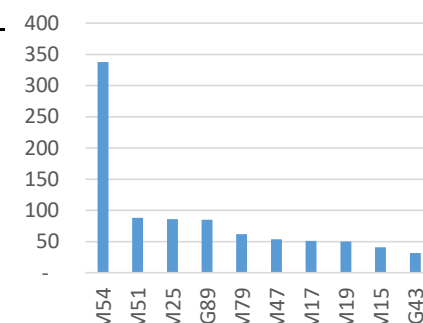
>= 30 but < 90 Days Supply

Top 10 Diagnosis Groups	ICD 10 Group	Prescriptions
Dorsalgia	M54	67,263
Thoracic, thoracolumbar, and lumbosacral intervertebral disc disorders	M51	32,896
Spondylosis	M47	27,661
Diseases of the Nervous System, Pain, not elsewhere classified	G89	19,938
Other joint disorder, not elsewhere classified	M25	14,280
Cervical disc disorders	M50	8,535
Other and unspecified soft tissue disorders, not elsewhere classified	M79	7,728
Intraoperative and postprocedural complications and disorders of musculoskeletal system, not elsewhere classified	M96	7,426
Other spondylopathies	M48	6,955
Opioid related disorders	F11	5,149



>= 90 Days Supply

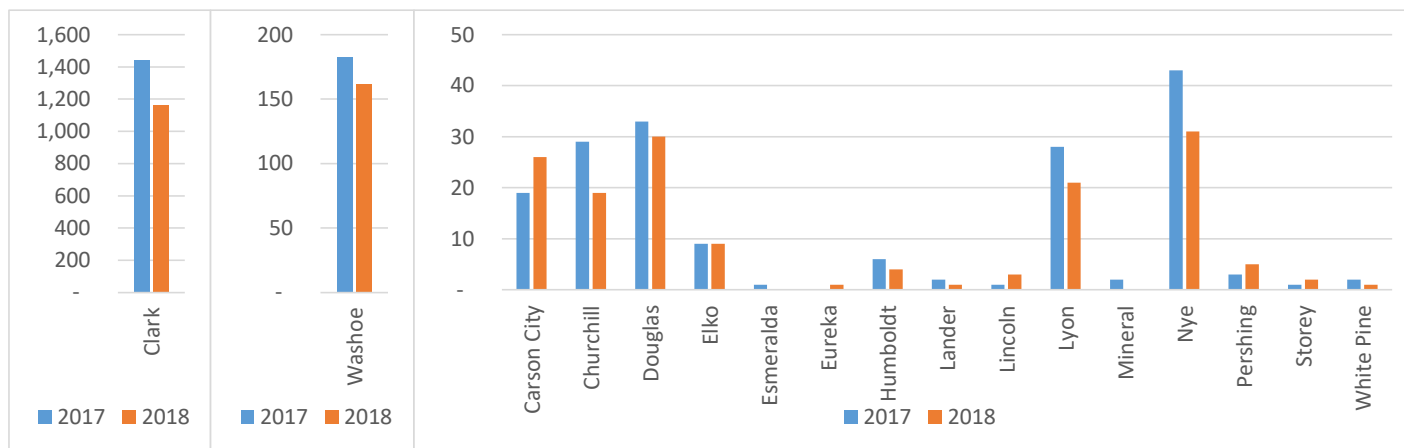
Top 10 Diagnosis Groups	ICD 10 Group	Prescriptions
Dorsalgia	M54	338
Thoracic, thoracolumbar, and lumbosacral intervertebral disc disorders	M51	88
Other joint disorder, not elsewhere classified	M25	86
Diseases of the Nervous System, Pain, not elsewhere classified	G89	85
Other and unspecified soft tissue disorders, not elsewhere classified	M79	62
Spondylosis	M47	54
Osteoarthritis of knee	M17	51
Other and unspecified osteoarthritis	M19	50
Polyosteoarthritis	M15	41
Migraine	G43	32



Opioid Prescriptions with Refills Where Initial Rx is for < 15 Days Supply, by Month and Resident County, January 2017 - May 2018

	2017	2018
Carson City	19	26
Churchill	29	19
Clark	1,445	1,163
Douglas	33	30
Elko	9	9
Esmeralda	1	-
Eureka	-	1
Humboldt	6	4
Lander	2	1
Lincoln	1	3
Lyon	28	21
Mineral	2	-
Nye	43	31
Pershing	3	5
Storey	1	2
Washoe	183	162
White Pine	2	1
Total	1,807	1,478

Only initial prescriptions filled in January of 2017 and 2018 were considered, respectively. Then, for each year, refill prescriptions were considered for January-May of 2017 and 2018 respectively. This was done in order to compare year over year between 2017 and 2018, since 2018 data are only through May.



Note: Clark and Washoe Counties are represented separately above due to the volume of prescriptions in those regions, and so that the differences in the smaller regions can be seen in the graphs.

Number of Individuals who were Co-Prescribed Benzodiazepines and Opioids in the Same Month, by Month and Resident County, January 2017 - May 2018

	Carson City	Churchill	Clark	Douglas	Elko	Esmeralda	Eureka	Humboldt	Lander	Lincoln	Lyon	Mineral	Nye	Pershing	Storey	Washoe	White Pine	Total
2017-1	674	291	22,854	537	324	4	24	101	55	62	663	52	894	47	73	3,993	95	30,743
2017-2	590	250	21,171	466	303	4	21	120	55	49	613	59	858	40	70	3,643	102	28,414
2017-3	670	287	23,316	518	377	8	26	123	46	48	688	63	921	50	68	3,966	104	31,279
2017-4	598	261	20,811	457	318	5	21	103	46	64	604	57	831	43	57	3,609	96	27,981
2017-5	674	273	22,046	505	354	5	23	103	37	55	628	48	908	56	63	3,812	117	29,707
2017-6	628	266	21,397	504	309	4	22	109	39	56	611	60	827	49	58	3,690	105	28,734
2017-7	556	238	19,894	457	326	7	21	96	37	51	540	49	767	35	53	3,340	104	26,571
2017-8	597	285	20,849	504	337	7	23	107	42	52	585	56	786	34	54	3,584	97	27,999
2017-9	570	279	18,777	475	306	5	25	93	31	45	550	49	719	27	57	3,311	92	25,411
2017-10	639	265	19,019	474	325	4	15	112	36	56	552	43	766	28	55	3,405	104	25,898
2017-11	578	247	17,827	441	301	7	18	98	34	47	565	27	673	34	55	3,299	91	24,342
2017-12	559	252	17,043	475	241	4	16	109	34	52	554	32	668	31	58	3,133	90	23,351
2018-1	537	234	15,599	423	213	6	9	88	34	54	485	39	626	28	42	2,811	86	21,314
2018-2	450	222	13,303	383	184	2	14	69	30	51	454	44	544	28	39	2,511	57	18,385
2018-3	474	209	14,257	411	208	5	14	74	25	46	447	42	597	29	46	2,665	85	19,634
2018-4	469	193	13,586	392	192	5	12	73	25	50	439	32	560	26	42	2,515	81	18,692
2018-5	439	214	13,141	389	188	3	12	68	29	46	424	32	532	29	39	2,340	90	18,015
Total	9,702	4,266	314,890	7,811	4,806	85	316	1,646	635	884	9,402	784	12,477	614	929	55,627	1,596	426,470

% Change	-34.87%	-26.46%	-42.50%	-27.56%	-41.98%	-25.00%	-50.00%	-32.67%	-47.27%	-25.81%	-36.05%	-38.46%	-40.49%	-38.30%	-46.58%	-41.40%	-5.26%	-41.40%
----------	---------	---------	---------	---------	---------	---------	---------	---------	---------	---------	---------	---------	---------	---------	---------	---------	--------	---------

