



STATE OF NEVADA
DEPARTMENT OF HEALTH AND HUMAN SERVICES
AGING AND DISABILITY SERVICES DIVISION

Administrative Office
3416 Goni Road, D-132
Carson City, NV 89706

(775) 687-4210 • Fax (775) 687-0574

adسد@adسد.nv.gov

RICHARD WHITLEY
Director

JANE GRUNER
Administrator

BRIAN SANDOVAL
Governor

June 24, 2015

Dear Long-Term Care Provider,

I am pleased to inform you that Assembly Bill 28 was signed into law on May 19, 2015 by Governor Brian Sandoval. This bill makes changes to NRS 427A.125 by requiring the State Long Term Care Ombudsman Program (SLTCOP) to:

"develop a course of training to be made available to officers, directors and employees of facility for long term care to encourage such facilities to provide services to their residents in a manner that allows the resident to follow their own routine and make their own decisions concerning the daily activities in which to participate. The course must also provide information concerning how to provide services in that manner."

Our program has developed training on the topics of person-centered care, consistent staffing, person-centered dining practices, and person-centered activities. Ombudsman Program staff are looking forward to the opportunity to provide training to you and your employees. The Nevada SLTCOP's mission is to advocate for and on behalf of the residents we serve to improve the quality of life and quality of care in long term care settings. Focusing on individual's needs, interests, life-styles, choices and abilities are long standing principles and values for the Nevada SLTCOP.

Please contact our offices to set up a Person-Centered training for you and your staff by calling:

Las Vegas (702) 786-3544
Reno (775) 687-0823
Carson City (775) 687-0538
Elko (775) 738-1966

Thank you,

A handwritten signature in black ink that reads "HEATHER KORBOLIC".

Heather Korbolic
Nevada State Long Term Care Ombudsman
(775) 687-0818
hkkorbolic@adسد.nv.gov

Aging and Disability Services Division
Administrative Office
3416 Goni Road, D-132
Carson City, NV 89706
(775) 687-4210 ~ (775) 687-0574

ASPEN: Tag Summary Report (TAG1)

from 10/01/2014 thru 10/27/2015

FED - FF09 - F - LONG TERM CARE FACILITIES (14.02)

Tag	Cite Frequency	Average Severity	Average Scope
0309 - PROVIDE CARE/SERVICES FOR HIGHEST WELL BEING	3	2.00	1.00
0371 - FOOD PROCURE, STORE/PREPARE/SERVE - SANITARY	3	2.00	1.33
0431 - DRUG RECORDS, LABEL/STORE DRUGS & BIOLOGICALS	3	2.00	1.67
0441 - INFECTION CONTROL, PREVENT SPREAD, LINENS	3	2.00	2.33
0315 - NO CATHETER, PREVENT UTI, RESTORE BLADDER	2	2.00	1.00
0323 - FREE OF ACCIDENT HAZARDS/SUPERVISION/DEVICES	2	2.00	1.00
0328 - TREATMENT/CARE FOR SPECIAL NEEDS	2	2.00	1.00
0329 - DRUG REGIMEN IS FREE FROM UNNECESSARY DRUGS	2	2.00	1.50
0155 - RIGHT TO REFUSE; FORMULATE ADVANCE DIRECTIVES	1	2.00	1.00
0156 - NOTICE OF RIGHTS, RULES, SERVICES, CHARGES	1	2.00	3.00
0167 - RIGHT TO SURVEY RESULTS - READILY ACCESSIBLE	1	1.00	3.00
0176 - RESIDENT SELF-ADMINISTER DRUGS IF DEEMED SAFE	1	2.00	1.00
0204 - PREPARATION FOR SAFE/ORDERLY TRANSFER/DISCHRG	1	2.00	1.00
0226 - DEVELOP/IMPLMENT ABUSE/NEGLECT, ETC POLICIES	1	2.00	1.00
0241 - DIGNITY AND RESPECT OF INDIVIDUALITY	1	2.00	1.00
0242 - SELF-DETERMINATION - RIGHT TO MAKE CHOICES	1	2.00	1.00
0243 - RIGHT TO PARTICIPATE IN RESIDENT/FAMILY GROUP	1	1.00	3.00
0248 - ACTIVITIES MEET INTERESTS/NEEDS OF EACH RES	1	2.00	2.00
0271 - ADMISSION PHYSICIAN ORDERS FOR IMMEDIATE CARE	1	2.00	1.00
0278 - ASSESSMENT ACCURACY/COORDINATION/CERTIFIED	1	2.00	3.00
0322 - NG TREATMENT/SERVICES - RESTORE EATING SKILLS	1	2.00	1.00
0325 - MAINTAIN NUTRITION STATUS UNLESS UNAVOIDABLE	1	2.00	1.00
0332 - FREE OF MEDICATION ERROR RATES OF 5% OR MORE	1	2.00	2.00
0356 - POSTED NURSE STAFFING INFORMATION	1	1.00	3.00
0372 - DISPOSE GARBAGE & REFUSE PROPERLY	1	2.00	1.00
0428 - DRUG REGIMEN REVIEW, REPORT IRREGULAR, ACT ON	1	2.00	2.00
0465 - SAFE/FUNCTIONAL/SANITARY/COMFORTABLE ENVIRON	1	2.00	1.00
0466 - PROCEDURES TO ENSURE WATER AVAILABILITY	1	2.00	3.00
0514 - RES RECORDS-COMPLETE/ACCURATE/ACCESSIBLE	1	2.00	1.00
0517 - WRITTEN PLANS TO MEET EMERGENCIES/DISASTERS	1	2.00	3.00
0518 - TRAIN ALL STAFF-EMERGENCY PROCEDURES/DRILLS	1	2.00	1.00
0520 - QAA COMMITTEE-MEMBERS/MEET QUARTERLY/PLANS	1	2.00	3.00

FED - K201 - K - LSC 2000 Health Existing (01.03)

Tag	Cite Frequency	Average Severity	Average Scope
0062 - LIFE SAFETY CODE STANDARD	2	2.00	2.00
0144 - LIFE SAFETY CODE STANDARD	2	2.00	3.00
0147 - LIFE SAFETY CODE STANDARD	2	2.00	2.00
0018 - LIFE SAFETY CODE STANDARD	1	2.00	3.00
0027 - LIFE SAFETY CODE STANDARD	1	2.00	1.00
0050 - LIFE SAFETY CODE STANDARD	1	2.00	3.00
0067 - LIFE SAFETY CODE STANDARD	1	2.00	3.00
0069 - LIFE SAFETY CODE STANDARD	1	2.00	1.00
0104 - LIFE SAFETY CODE STANDARD	1	2.00	2.00

FED - K202 - K - LSC 2000 Health New (01.03)

Tag	Cite Frequency	Average Severity	Average Scope
0027 - LIFE SAFETY CODE STANDARD	1	2.00	2.00
0039 - LIFE SAFETY CODE STANDARD	1	2.00	1.00
0050 - LIFE SAFETY CODE STANDARD	1	2.00	1.00
0054 - LIFE SAFETY CODE STANDARD	1	2.00	1.00
0056 - LIFE SAFETY CODE STANDARD	1	2.00	1.00
0064 - LIFE SAFETY CODE STANDARD	1	2.00	1.00
0066 - LIFE SAFETY CODE STANDARD	1	2.00	1.00
0108 - LIFE SAFETY CODE STANDARD	1	2.00	1.00
0130 - MISCELLANEOUS	1	2.00	1.00
0141 - LIFE SAFETY CODE STANDARD	1	2.00	2.00
0147 - LIFE SAFETY CODE STANDARD	1	2.00	1.00

ASPEN: Tag Summary Report (TAG1)

from 10/01/2014 thru 10/27/2015

ST - UPEV - Z - Z-Nursing Home Licensure 99 (1.00)

Tag	Cite Frequency	Average Severity	Average Scope
501 - Compliance with NFPA 101	2	0.00	0.00
5015 - Compliance with AIA	2	0.00	0.00
254 - Program for Control of Infections	1	2.00	3.00
342 - Personnel Records - Licenses, TB, Background	1	2.00	1.00
441 - Laboratory Services	1	2.00	1.00
505 - Plans Submittal	1	0.00	0.00

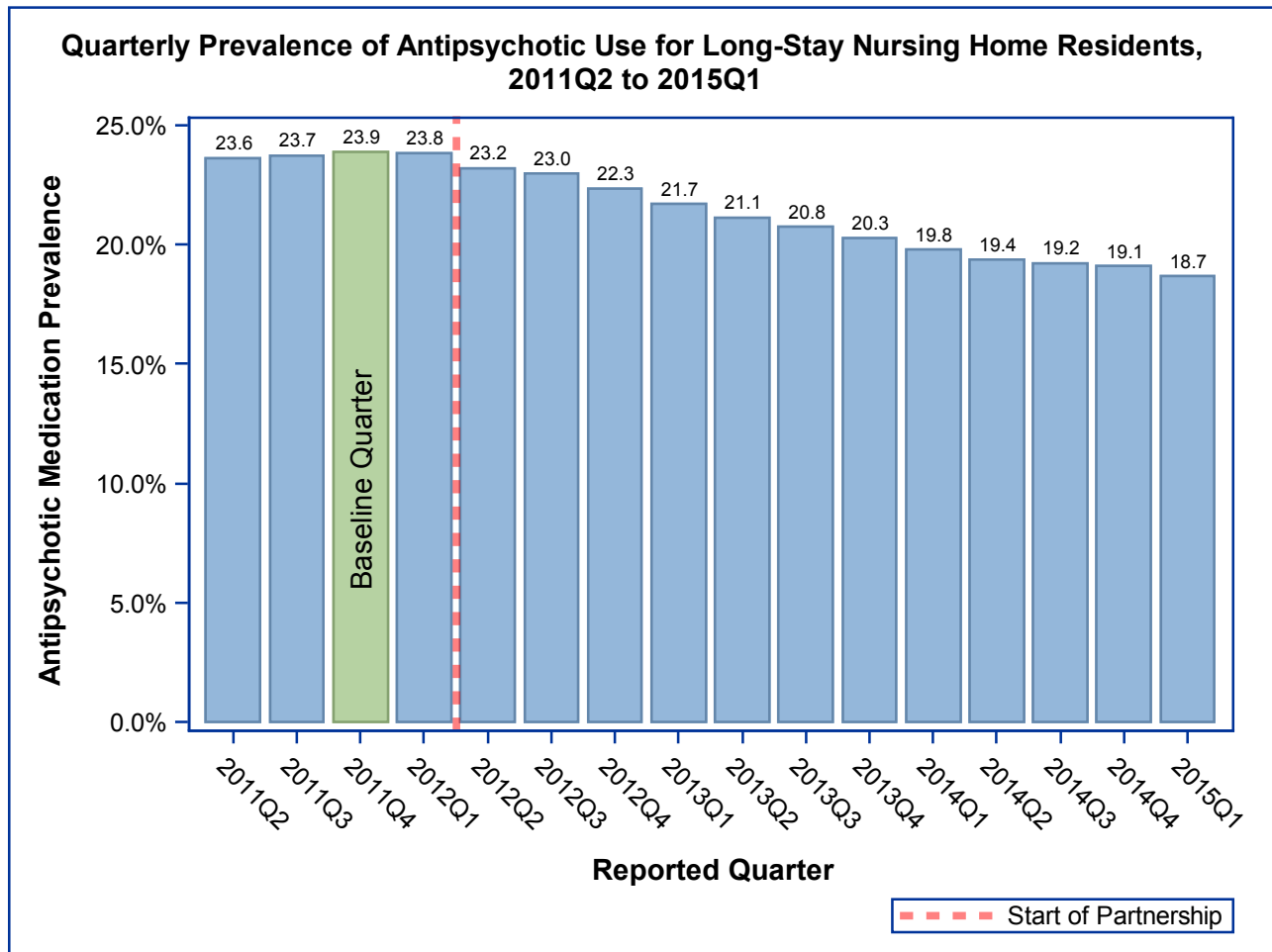
Partnership to Improve Dementia Care in Nursing Homes Antipsychotic Drug use in Nursing Homes Trend Update

The National Partnership to Improve Dementia Care in Nursing Homes is committed to improving the quality of care for individuals with dementia living in nursing homes. The Partnership has a mission to deliver health care that is person-centered, comprehensive and interdisciplinary with a specific focus on protecting residents from being prescribed antipsychotic medications unless there is a valid, clinical indication and a systematic process to evaluate each individual's need. The Centers for Medicare & Medicaid Services (CMS) promotes a multidimensional approach that includes; research, partnerships and state-based coalitions, revised surveyor guidance, training for providers and surveyors and public reporting.

CMS is tracking the progress of the Partnership by reviewing publicly reported measures. The official measure of the Partnership is the percentage of long-stay nursing home residents who are receiving an antipsychotic medication, excluding those residents diagnosed with schizophrenia, Huntington's Disease or Tourette's Syndrome. In 2011Q4 23.9% of long-stay nursing home residents were receiving an antipsychotic medication; since then there has been a decrease of 21.7% to a national prevalence of 18.7% in 2015Q1. Success has varied by state and CMS region, with some states and regions having seen a reduction of greater than 20%.

A three-quarter measure is posted to the Nursing Home Compare website at www.medicare.gov/nursinghomecompare. The long-stay measure on Nursing Home Compare, is the exact same measure as below, except each facility's score is averaged over the last three quarters in order to give consumers information on the past history of each facility.

For more information on this National Partnership, please send correspondence to dnh_behavioralhealth@cms.hhs.gov.

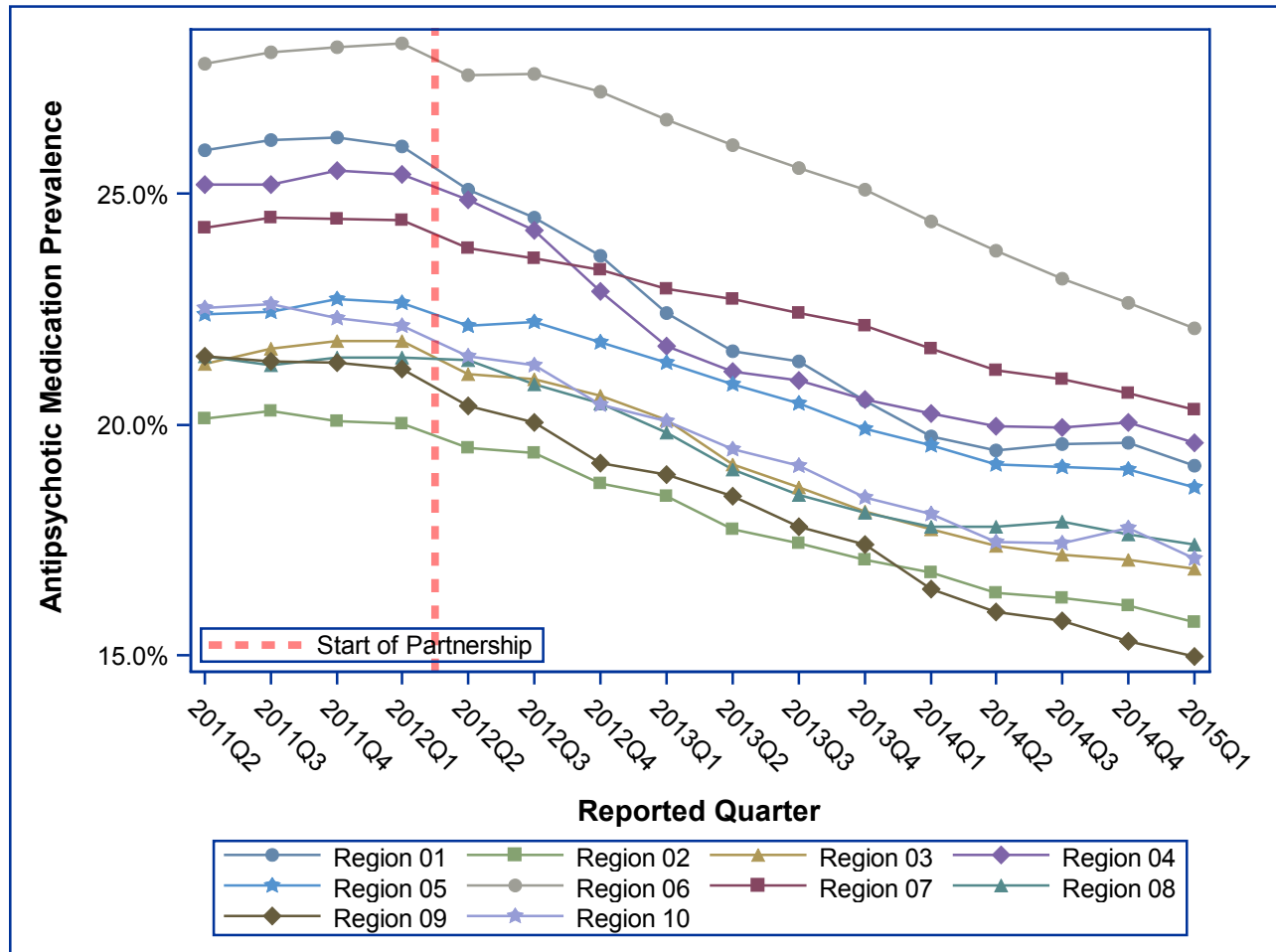


Partnership to Improve Dementia Care in Nursing Homes

Antipsychotic Drug use in Nursing Homes Trend Update

Quarterly Prevalence of Antipsychotic Use for Long-Stay Residents, CMS Regions 2011Q2 to 2015Q1

CMS Region- and State-specific data are displayed below. These data show the change in the single-quarter prevalence of antipsychotic medication use amongst long-stay residents since 2011Q2 and shows the change since the start of the Partnership



Region	2011Q4	2012Q1	2012Q2	2012Q3	2013Q3	2013Q4	2014Q1	2014Q2	2014Q3	2014Q4	2015Q1	Percentage point difference (2011Q4-2015Q1)	% Change
National	23.9%	23.8%	23.2%	23.0%	20.8%	20.3%	19.79	19.4%	19.2%	19.1%	18.68	-5.19	-21.7%
Region 01	26.2%	26.0%	25.1%	24.5%	21.4%	20.5%	19.74	19.4%	19.6%	19.6%	19.12	-7.10	-27.1%
Region 02	20.1%	20.0%	19.5%	19.4%	17.4%	17.1%	16.78	16.3%	16.2%	16.1%	15.72	-4.36	-21.7%
Region 03	21.8%	21.8%	21.1%	21.0%	18.6%	18.1%	17.73	17.4%	17.2%	17.1%	16.88	-4.93	-22.6%
Region 04	25.5%	25.4%	24.9%	24.2%	20.9%	20.5%	20.24	20.0%	19.9%	20.0%	19.60	-5.91	-23.2%
Region 05	22.7%	22.7%	22.1%	22.2%	20.5%	19.9%	19.55	19.1%	19.1%	19.0%	18.63	-4.08	-18.0%
Region 06	28.2%	28.3%	27.6%	27.6%	25.6%	25.1%	24.40	23.8%	23.2%	22.6%	22.10	-6.09	-21.6%
Region 07	24.5%	24.4%	23.8%	23.6%	22.4%	22.1%	21.65	21.2%	21.0%	20.7%	20.32	-4.15	-17.0%
Region 08	21.4%	21.5%	21.4%	20.9%	18.5%	18.1%	17.77	17.8%	17.9%	17.6%	17.39	-4.06	-18.9%
Region 09	21.3%	21.2%	20.4%	20.1%	17.8%	17.4%	16.44	15.9%	15.7%	15.3%	14.96	-6.38	-29.9%
Region 10	22.3%	22.1%	21.5%	21.3%	19.1%	18.4%	18.05	17.5%	17.4%	17.8%	17.10	-5.19	-23.3%

**Partnership to Improve Dementia Care in Nursing Homes
Antipsychotic Drug use in Nursing Homes Trend Update
Quarterly Prevalence of Antipsychotic Use for Long-Stay Residents, States 2011Q2 to 2015Q1**

State	2011Q2	2011Q3	2011Q4	2012Q1	2012Q2	2012Q3	2012Q4	2013Q1	2013Q2	2013Q3	2013Q4	2014Q1	2014Q2	2014Q3	2014Q4	2015Q1	Rank in 2015Q1 (lower=better)	Percentage point difference (2011Q4-2015Q1)	% Change
ALABAMA	27.0%	27.4%	27.3%	27.5%	26.5%	26.0%	24.0%	22.9%	22.2%	22.3%	22.2%	22.1%	22.4%	22.0%	21.9%	21.69	46	-5.62	-20.6%
ALASKA	15.6%	15.1%	13.7%	13.4%	13.0%	13.6%	12.4%	12.5%	11.8%	15.0%	12.8%	12.7%	14.8%	15.9%	16.4%	14.40	7	0.66	4.8%
ARIZONA	22.4%	22.5%	22.7%	22.7%	21.7%	21.6%	20.9%	20.4%	20.2%	19.9%	20.7%	18.5%	17.5%	18.4%	17.7%	17.27	21	-5.47	-24.1%
ARKANSAS	25.7%	27.0%	26.1%	26.1%	25.3%	25.8%	25.5%	25.1%	24.4%	23.8%	22.8%	21.7%	19.9%	18.8%	17.9%	17.62	24	-8.50	-32.5%
CALIFORNIA	21.7%	21.6%	21.6%	21.3%	20.4%	20.1%	19.2%	19.0%	18.4%	17.7%	17.1%	16.3%	15.8%	15.5%	15.2%	14.73	11	-6.83	-31.7%
COLORADO	19.8%	19.7%	19.9%	19.9%	20.3%	19.6%	19.4%	18.5%	17.5%	17.0%	16.4%	16.4%	16.1%	16.0%	15.9%	16.13	15	-3.77	-19.0%
CONNECTICUT	25.8%	26.1%	26.0%	25.8%	25.0%	24.3%	23.2%	22.4%	21.6%	22.0%	21.0%	20.4%	20.3%	20.1%	20.5%	19.87	36	-6.17	-23.7%
DELAWARE	21.1%	21.0%	21.3%	21.8%	22.6%	21.9%	20.9%	18.0%	16.8%	16.8%	15.5%	15.5%	14.7%	14.8%	14.8%	14.48	8	-6.81	-32.0%
DISTRICT OF COLUMBIA	21.4%	20.0%	20.0%	19.4%	18.8%	19.4%	18.2%	17.4%	17.6%	15.9%	14.5%	14.8%	15.0%	14.7%	14.1%	13.13	2	-6.85	-34.3%
FLORIDA	24.2%	24.3%	24.5%	24.6%	23.8%	23.5%	23.3%	22.7%	22.1%	21.8%	21.2%	21.2%	20.6%	20.6%	20.8%	20.30	39	-4.18	-17.1%
GEORGIA	28.4%	28.4%	28.7%	28.7%	28.0%	27.1%	24.2%	22.7%	21.8%	21.4%	21.1%	20.6%	20.3%	20.1%	20.2%	20.08	37	-8.58	-29.9%
HAWAII	11.4%	12.2%	12.5%	13.5%	15.3%	13.2%	11.7%	11.0%	11.4%	12.1%	11.6%	8.5%	9.1%	8.7%	8.4%	10.92	1	-1.53	-12.3%
IDAHO	26.4%	25.7%	25.3%	26.4%	25.1%	24.5%	23.9%	23.1%	21.9%	20.7%	19.3%	19.3%	18.9%	18.4%	17.2%	18.72	31	-6.62	-26.1%
ILLINOIS	26.0%	25.8%	25.7%	25.6%	25.3%	25.7%	25.5%	25.0%	25.2%	24.8%	24.0%	24.1%	23.7%	23.5%	23.1%	22.91	49	-2.78	-10.8%
INDIANA	23.0%	23.6%	24.0%	24.1%	22.9%	23.1%	22.2%	21.7%	20.9%	21.0%	20.2%	19.9%	19.2%	19.0%	18.9%	18.35	30	-5.68	-23.6%
IOWA	22.2%	22.3%	22.3%	22.0%	21.7%	21.1%	20.6%	20.2%	20.2%	19.9%	20.0%	19.7%	19.3%	19.2%	18.9%	18.26	29	-4.07	-18.2%
KANSAS	26.1%	26.5%	26.1%	26.1%	25.2%	25.3%	25.1%	24.2%	23.9%	23.5%	23.0%	23.1%	22.8%	23.2%	22.3%	22.19	47	-3.92	-15.0%
KENTUCKY	25.5%	25.2%	26.0%	26.0%	25.2%	24.4%	23.1%	21.9%	22.0%	21.8%	21.6%	21.2%	20.9%	21.1%	21.1%	21.36	44	-4.62	-17.8%
LOUISIANA	29.7%	29.9%	29.7%	29.7%	29.1%	28.9%	28.6%	27.8%	27.0%	26.6%	26.5%	25.5%	25.1%	25.0%	25.0%	24.88	51	-4.84	-16.3%
MAINE	26.4%	26.7%	27.2%	26.9%	25.9%	25.1%	24.2%	22.6%	21.7%	21.3%	20.1%	18.5%	18.2%	19.1%	19.3%	18.87	33	-8.38	-30.7%
MARYLAND	19.5%	19.8%	19.8%	19.6%	18.5%	17.8%	17.7%	17.3%	16.7%	15.6%	15.9%	15.9%	15.8%	15.4%	14.8%	15.03	13	-4.76	-24.1%
MASSACHUSETTS	26.6%	26.7%	26.7%	26.6%	25.4%	25.1%	24.5%	22.9%	22.2%	21.8%	21.2%	20.6%	20.2%	20.1%	19.9%	19.44	35	-7.28	-27.3%
MICHIGAN	16.2%	16.0%	16.4%	16.4%	15.8%	16.0%	15.5%	14.9%	14.4%	14.1%	13.9%	13.7%	13.4%	13.3%	13.7%	13.62	3	-2.77	-16.9%
MINNESOTA	18.9%	19.0%	19.0%	18.8%	18.1%	18.0%	18.0%	17.9%	17.3%	16.7%	16.6%	16.0%	15.3%	15.1%	14.6%	14.50	9	-4.53	-23.8%
MISSISSIPPI	26.6%	26.8%	26.6%	26.3%	26.6%	26.1%	25.3%	24.7%	24.4%	25.3%	24.3%	23.8%	23.0%	23.0%	23.1%	22.73	48	-3.85	-14.5%
MISSOURI	25.5%	26.0%	26.1%	26.0%	25.3%	25.2%	24.9%	24.6%	24.4%	23.7%	23.1%	22.2%	21.6%	20.8%	20.7%	20.55	41	-5.60	-21.4%
MONTANA	21.6%	22.0%	21.5%	21.5%	19.5%	19.7%	19.5%	19.7%	19.2%	18.1%	17.2%	16.9%	16.3%	17.0%	16.9%	16.24	16	-5.24	-24.4%
NEBRASKA	22.7%	22.4%	22.3%	22.9%	22.6%	22.6%	22.9%	22.5%	22.2%	22.8%	22.7%	22.0%	21.4%	21.7%	21.6%	21.00	42	-1.33	-6.0%
NEVADA	22.2%	20.7%	20.3%	20.5%	21.1%	19.7%	20.2%	20.1%	20.4%	19.9%	19.7%	19.1%	18.8%	19.3%	18.4%	17.91	26	-2.36	-11.7%
NEW HAMPSHIRE	25.7%	25.4%	25.5%	25.1%	24.0%	23.8%	23.7%	22.7%	21.1%	21.2%	20.1%	18.8%	18.4%	18.6%	18.8%	17.67	25	-7.86	-30.8%
NEW JERSEY	17.0%	18.2%	17.9%	17.8%	17.5%	17.4%	17.1%	16.6%	15.9%	15.4%	15.1%	14.5%	14.2%	14.3%	14.1%	13.67	4	-4.23	-23.6%
NEW MEXICO	22.4%	22.3%	21.7%	22.0%	20.0%	20.4%	22.2%	20.3%	20.7%	17.7%	18.1%	19.5%	17.3%	16.9%	16.1%	15.81	14	-5.86	-27.0%
NEW YORK	22.0%	21.6%	21.3%	21.4%	20.8%	20.6%	19.7%	19.5%	18.9%	18.7%	18.2%	18.0%	17.6%	17.4%	17.3%	16.94	19	-4.37	-20.5%
NORTH CAROLINA	21.1%	20.8%	21.4%	21.3%	20.7%	19.9%	18.0%	16.5%	16.0%	15.8%	15.6%	15.0%	14.8%	15.4%	15.3%	14.91	12	-6.54	-30.5%
NORTH DAKOTA	20.8%	21.4%	21.3%	21.2%	20.6%	20.4%	19.8%	19.1%	18.5%	18.3%	18.7%	18.0%	18.3%	19.0%	19.3%	19.11	34	-2.20	-10.3%
OHIO	24.9%	25.0%	25.4%	25.4%	25.0%	24.8%	24.5%	24.1%	23.3%	22.7%	22.0%	21.6%	21.6%	21.8%	22.0%	21.28	43	-4.17	-16.4%
OKLAHOMA	26.7%	26.8%	27.3%	27.5%	27.3%	26.6%	25.5%	23.0%	22.7%	22.3%	21.7%	21.5%	20.9%	20.7%	21.0%	20.19	38	-7.13	-26.1%
OREGON	20.6%	21.0%	21.5%	21.3%	20.0%	19.9%	19.2%	19.1%	18.6%	18.8%	18.3%	18.4%	17.1%	17.8%	18.5%	16.79	18	-4.70	-21.9%
PENNSYLVANIA	21.6%	22.1%	22.3%	22.2%	21.7%	21.7%	21.1%	20.5%	19.4%	19.2%	18.8%	18.3%	17.9%	17.6%	17.6%	17.29	22	-5.01	-22.5%
RHODE ISLAND	23.0%	23.8%	24.0%	23.9%	23.1%	21.7%	20.2%	20.3%	19.3%	18.4%	17.5%	16.9%	16.5%	17.0%	17.2%	17.30	23	-6.69	-27.9%
SOUTH CAROLINA	20.6%	20.5%	20.7%	20.6%	20.7%	20.2%	18.3%	17.2%	16.9%	15.9%	15.5%	15.3%	15.6%	15.3%	15.5%	14.56	10	-6.14	-29.7%
SOUTH DAKOTA	21.8%	21.8%	21.5%	21.5%	21.3%	21.4%	20.5%	20.0%	18.8%	18.1%	18.6%	18.0%	18.1%	18.2%	18.4%	18.06	27	-3.47	-16.1%
TENNESSEE	29.3%	29.5%	30.0%	29.3%	29.0%	27.7%	27.2%	25.0%	23.9%	24.0%	23.4%	23.1%	22.7%	22.5%	22.8%	21.57	45	-8.39	-28.0%

Partnership to Improve Dementia Care in Nursing Homes
Antipsychotic Drug use in Nursing Homes Trend Update
Quarterly Prevalence of Antipsychotic Use for Long-Stay Residents, States 2011Q2 to 2015Q1

State	2011Q2	2011Q3	2011Q4	2012Q1	2012Q2	2012Q3	2012Q4	2013Q1	2013Q2	2013Q3	2013Q4	2014Q1	2014Q2	2014Q3	2014Q4	2015Q1	Rank in 2015Q1 (lower=better)	Percentage point difference (2011Q4-2015Q1)	% Change
TEXAS	28.4%	28.5%	28.8%	28.9%	28.2%	28.3%	28.0%	27.9%	27.3%	27.0%	26.5%	25.7%	25.3%	24.6%	23.8%	23.17	50	-5.68	-19.7%
UTAH	26.9%	24.7%	27.1%	26.9%	27.1%	26.3%	26.4%	25.0%	24.5%	23.6%	21.7%	21.7%	23.1%	22.8%	21.2%	20.44	40	-6.67	-24.6%
VERMONT	25.5%	26.1%	25.4%	25.7%	26.2%	24.9%	23.4%	20.3%	20.2%	20.2%	18.8%	18.2%	18.0%	19.2%	18.9%	18.76	32	-6.64	-26.1%
VIRGINIA	22.4%	22.8%	23.0%	22.9%	21.8%	21.9%	22.1%	22.1%	21.0%	20.5%	19.7%	19.0%	18.2%	18.5%	18.4%	18.06	28	-4.99	-21.6%
WASHINGTON	22.8%	23.0%	22.3%	21.8%	21.7%	21.6%	20.6%	20.2%	19.7%	19.1%	18.6%	17.8%	17.5%	17.0%	17.6%	16.98	20	-5.35	-24.0%
WEST VIRGINIA	20.1%	20.3%	20.5%	21.5%	20.4%	20.7%	20.4%	19.8%	19.0%	18.0%	16.5%	16.1%	16.6%	16.2%	16.4%	16.74	17	-3.76	-18.3%
WISCONSIN	18.7%	18.7%	19.0%	18.9%	18.9%	19.0%	18.0%	17.7%	17.4%	16.8%	16.3%	15.4%	14.6%	14.2%	14.3%	13.91	5	-5.14	-27.0%
WYOMING	17.8%	18.4%	16.8%	16.9%	19.4%	16.8%	17.5%	17.0%	16.5%	17.2%	17.9%	16.5%	15.6%	15.1%	14.6%	13.95	6	-2.88	-17.1%

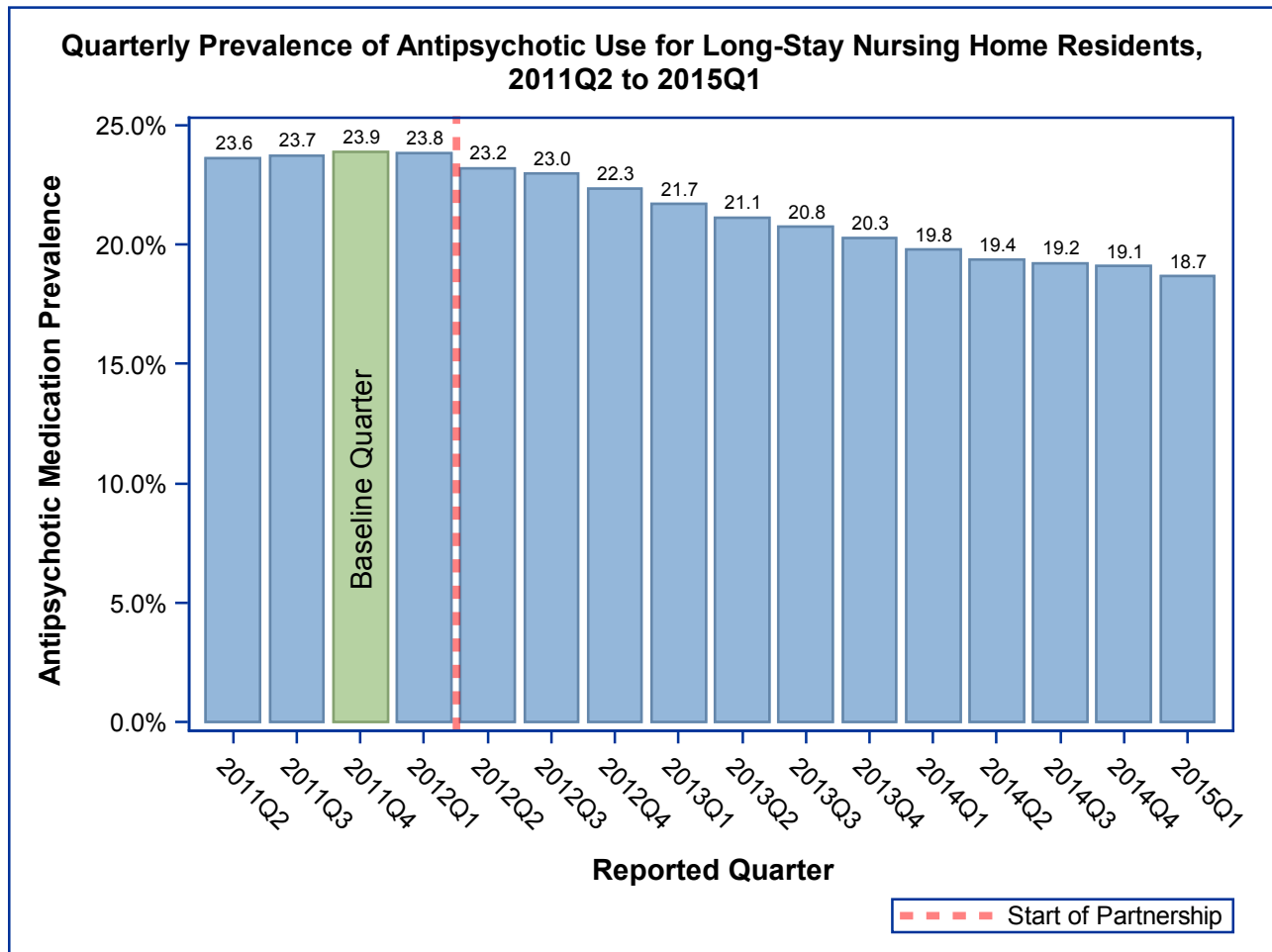
Partnership to Improve Dementia Care in Nursing Homes Antipsychotic Drug use in Nursing Homes Trend Update

The National Partnership to Improve Dementia Care in Nursing Homes is committed to improving the quality of care for individuals with dementia living in nursing homes. The Partnership has a mission to deliver health care that is person-centered, comprehensive and interdisciplinary with a specific focus on protecting residents from being prescribed antipsychotic medications unless there is a valid, clinical indication and a systematic process to evaluate each individual's need. The Centers for Medicare & Medicaid Services (CMS) promotes a multidimensional approach that includes; research, partnerships and state-based coalitions, revised surveyor guidance, training for providers and surveyors and public reporting.

CMS is tracking the progress of the Partnership by reviewing publicly reported measures. The official measure of the Partnership is the percentage of long-stay nursing home residents who are receiving an antipsychotic medication, excluding those residents diagnosed with schizophrenia, Huntington's Disease or Tourette's Syndrome. In 2011Q4 23.9% of long-stay nursing home residents were receiving an antipsychotic medication; since then there has been a decrease of 21.7% to a national prevalence of 18.7% in 2015Q1. Success has varied by state and CMS region, with some states and regions having seen a reduction of greater than 20%.

A three-quarter measure is posted to the Nursing Home Compare website at www.medicare.gov/nursinghomecompare. The long-stay measure on Nursing Home Compare, is the exact same measure as below, except each facility's score is averaged over the last three quarters in order to give consumers information on the past history of each facility.

For more information on this National Partnership, please send correspondence to dnh_behavioralhealth@cms.hhs.gov.

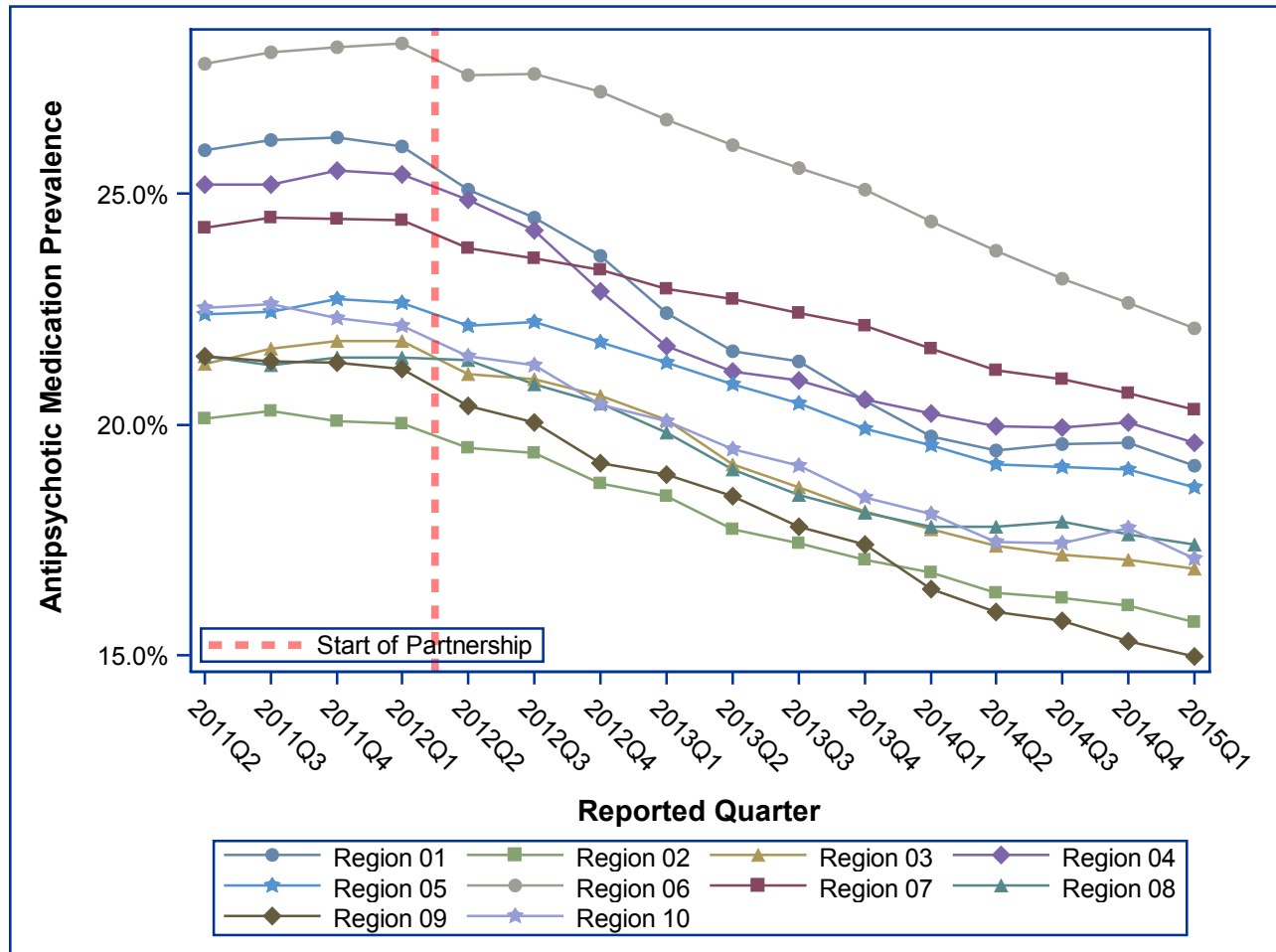


Partnership to Improve Dementia Care in Nursing Homes

Antipsychotic Drug use in Nursing Homes Trend Update

Quarterly Prevalence of Antipsychotic Use for Long-Stay Residents, CMS Regions 2011Q2 to 2015Q1

CMS Region- and State-specific data are displayed below. These data show the change in the single-quarter prevalence of antipsychotic medication use amongst long-stay residents since 2011Q2 and shows the change since the start of the Partnership



Region	2011Q4	2012Q1	2012Q2	2012Q3	2013Q3	2013Q4	2014Q1	2014Q2	2014Q3	2014Q4	2015Q1	Percentage point difference (2011Q4-2015Q1)	% Change
National	23.9%	23.8%	23.2%	23.0%	20.8%	20.3%	19.79	19.4%	19.2%	19.1%	18.68	-5.19	-21.7%
Region 01	26.2%	26.0%	25.1%	24.5%	21.4%	20.5%	19.74	19.4%	19.6%	19.6%	19.12	-7.10	-27.1%
Region 02	20.1%	20.0%	19.5%	19.4%	17.4%	17.1%	16.78	16.3%	16.2%	16.1%	15.72	-4.36	-21.7%
Region 03	21.8%	21.8%	21.1%	21.0%	18.6%	18.1%	17.73	17.4%	17.2%	17.1%	16.88	-4.93	-22.6%
Region 04	25.5%	25.4%	24.9%	24.2%	20.9%	20.5%	20.24	20.0%	19.9%	20.0%	19.60	-5.91	-23.2%
Region 05	22.7%	22.7%	22.1%	22.2%	20.5%	19.9%	19.55	19.1%	19.1%	19.0%	18.63	-4.08	-18.0%
Region 06	28.2%	28.3%	27.6%	27.6%	25.6%	25.1%	24.40	23.8%	23.2%	22.6%	22.10	-6.09	-21.6%
Region 07	24.5%	24.4%	23.8%	23.6%	22.4%	22.1%	21.65	21.2%	21.0%	20.7%	20.32	-4.15	-17.0%
Region 08	21.4%	21.5%	21.4%	20.9%	18.5%	18.1%	17.77	17.8%	17.9%	17.6%	17.39	-4.06	-18.9%
Region 09	21.3%	21.2%	20.4%	20.1%	17.8%	17.4%	16.44	15.9%	15.7%	15.3%	14.96	-6.38	-29.9%
Region 10	22.3%	22.1%	21.5%	21.3%	19.1%	18.4%	18.05	17.5%	17.4%	17.8%	17.10	-5.19	-23.3%

Partnership to Improve Dementia Care in Nursing Homes

Antipsychotic Drug use in Nursing Homes Trend Update

Quarterly Prevalence of Antipsychotic Use for Long-Stay Residents, States 2011Q2 to 2015Q1

State	2011Q2	2011Q3	2011Q4	2012Q1	2012Q2	2012Q3	2012Q4	2013Q1	2013Q2	2013Q3	2013Q4	2014Q1	2014Q2	2014Q3	2014Q4	2015Q1	Rank in 2015Q1 (lower=better)	Percentage point difference (2011Q4-2015Q1)	% Change
ALABAMA	27.0%	27.4%	27.3%	27.5%	26.5%	26.0%	24.0%	22.9%	22.2%	22.3%	22.2%	22.1%	22.4%	22.0%	21.9%	21.69	46	-5.62	-20.6%
ALASKA	15.6%	15.1%	13.7%	13.4%	13.0%	13.6%	12.4%	12.5%	11.8%	15.0%	12.8%	12.7%	14.8%	15.9%	16.4%	14.40	7	0.66	4.8%
ARIZONA	22.4%	22.5%	22.7%	22.7%	21.7%	21.6%	20.9%	20.4%	20.2%	19.9%	20.7%	18.5%	17.5%	18.4%	17.7%	17.27	21	-5.47	-24.1%
ARKANSAS	25.7%	27.0%	26.1%	26.1%	25.3%	25.8%	25.5%	25.1%	24.4%	23.8%	22.8%	21.7%	19.9%	18.8%	17.9%	17.62	24	-8.50	-32.5%
CALIFORNIA	21.7%	21.6%	21.6%	21.3%	20.4%	20.1%	19.2%	19.0%	18.4%	17.7%	17.1%	16.3%	15.8%	15.5%	15.2%	14.73	11	-6.83	-31.7%
COLORADO	19.8%	19.7%	19.9%	19.9%	20.3%	19.6%	19.4%	18.5%	17.5%	17.0%	16.4%	16.4%	16.1%	16.0%	15.9%	16.13	15	-3.77	-19.0%
CONNECTICUT	25.8%	26.1%	26.0%	25.8%	25.0%	24.3%	23.2%	22.4%	21.6%	22.0%	21.0%	20.4%	20.3%	20.1%	20.5%	19.87	36	-6.17	-23.7%
DELAWARE	21.1%	21.0%	21.3%	21.8%	22.6%	21.9%	20.9%	18.0%	16.8%	16.8%	15.5%	15.5%	14.7%	14.8%	14.8%	14.48	8	-6.81	-32.0%
DISTRICT OF COLUMBIA	21.4%	20.0%	20.0%	19.4%	18.8%	19.4%	18.2%	17.4%	17.6%	15.9%	14.5%	14.8%	15.0%	14.7%	14.1%	13.13	2	-6.85	-34.3%
FLORIDA	24.2%	24.3%	24.5%	24.6%	23.8%	23.5%	23.3%	22.7%	22.1%	21.8%	21.2%	21.2%	20.6%	20.6%	20.8%	20.30	39	-4.18	-17.1%
GEORGIA	28.4%	28.4%	28.7%	28.7%	28.0%	27.1%	24.2%	22.7%	21.8%	21.4%	21.1%	20.6%	20.3%	20.1%	20.2%	20.08	37	-8.58	-29.9%
HAWAII	11.4%	12.2%	12.5%	13.5%	15.3%	13.2%	11.7%	11.0%	11.4%	12.1%	11.6%	8.5%	9.1%	8.7%	8.4%	10.92	1	-1.53	-12.3%
IDAHO	26.4%	25.7%	25.3%	26.4%	25.1%	24.5%	23.9%	23.1%	21.9%	20.7%	19.3%	19.3%	18.9%	18.4%	17.2%	18.72	31	-6.62	-26.1%
ILLINOIS	26.0%	25.8%	25.7%	25.6%	25.3%	25.7%	25.5%	25.0%	25.2%	24.8%	24.0%	24.1%	23.7%	23.5%	23.1%	22.91	49	-2.78	-10.8%
INDIANA	23.0%	23.6%	24.0%	24.1%	22.9%	23.1%	22.2%	21.7%	20.9%	21.0%	20.2%	19.9%	19.2%	19.0%	18.9%	18.35	30	-5.68	-23.6%
IOWA	22.2%	22.3%	22.3%	22.0%	21.7%	21.1%	20.6%	20.2%	20.2%	19.9%	20.0%	19.7%	19.3%	19.2%	18.9%	18.26	29	-4.07	-18.2%
KANSAS	26.1%	26.5%	26.1%	26.1%	25.2%	25.3%	25.1%	24.2%	23.9%	23.5%	23.0%	23.1%	22.8%	23.2%	22.3%	22.19	47	-3.92	-15.0%
KENTUCKY	25.5%	25.2%	26.0%	26.0%	25.2%	24.4%	23.1%	21.9%	22.0%	21.8%	21.6%	21.2%	20.9%	21.1%	21.1%	21.36	44	-4.62	-17.8%
LOUISIANA	29.7%	29.9%	29.7%	29.7%	29.1%	28.9%	28.6%	27.8%	27.0%	26.6%	26.5%	25.5%	25.1%	25.0%	25.0%	24.88	51	-4.84	-16.3%
MAINE	26.4%	26.7%	27.2%	26.9%	25.9%	25.1%	24.2%	22.6%	21.7%	21.3%	20.1%	18.5%	18.2%	19.1%	19.3%	18.87	33	-8.38	-30.7%
MARYLAND	19.5%	19.8%	19.8%	19.6%	18.5%	17.8%	17.7%	17.3%	16.7%	15.6%	15.9%	15.9%	15.8%	15.4%	14.8%	15.03	13	-4.76	-24.1%
MASSACHUSETTS	26.6%	26.7%	26.7%	26.6%	25.4%	25.1%	24.5%	22.9%	22.2%	21.8%	21.2%	20.6%	20.2%	20.1%	19.9%	19.44	35	-7.28	-27.3%
MICHIGAN	16.2%	16.0%	16.4%	16.4%	15.8%	16.0%	15.5%	14.9%	14.4%	14.1%	13.9%	13.7%	13.4%	13.3%	13.7%	13.62	3	-2.77	-16.9%
MINNESOTA	18.9%	19.0%	19.0%	18.8%	18.1%	18.0%	18.0%	17.9%	17.3%	16.7%	16.6%	16.0%	15.3%	15.1%	14.6%	14.50	9	-4.53	-23.8%
MISSISSIPPI	26.6%	26.8%	26.6%	26.3%	26.6%	26.1%	25.3%	24.7%	24.4%	25.3%	24.3%	23.8%	23.0%	23.0%	23.1%	22.73	48	-3.85	-14.5%
MISSOURI	25.5%	26.0%	26.1%	26.0%	25.3%	25.2%	24.9%	24.6%	24.4%	23.7%	23.1%	22.2%	21.6%	20.8%	20.7%	20.55	41	-5.60	-21.4%
MONTANA	21.6%	22.0%	21.5%	21.5%	19.5%	19.7%	19.5%	19.7%	19.2%	18.1%	17.2%	16.9%	16.3%	17.0%	16.9%	16.24	16	-5.24	-24.4%
NEBRASKA	22.7%	22.4%	22.3%	22.9%	22.6%	22.6%	22.9%	22.5%	22.2%	22.8%	22.7%	22.0%	21.4%	21.7%	21.6%	21.00	42	-1.33	-6.0%
NEVADA	22.2%	20.7%	20.3%	20.5%	21.1%	19.7%	20.2%	20.1%	20.4%	19.9%	19.7%	19.1%	18.8%	19.3%	18.4%	17.91	26	-2.36	-11.7%
NEW HAMPSHIRE	25.7%	25.4%	25.5%	25.1%	24.0%	23.8%	23.7%	22.7%	21.1%	21.2%	20.1%	18.8%	18.4%	18.6%	18.8%	17.67	25	-7.86	-30.8%
NEW JERSEY	17.0%	18.2%	17.9%	17.8%	17.5%	17.4%	17.1%	16.6%	15.9%	15.4%	15.1%	14.5%	14.2%	14.3%	14.1%	13.67	4	-4.23	-23.6%
NEW MEXICO	22.4%	22.3%	21.7%	22.0%	20.0%	20.4%	22.2%	20.3%	20.7%	17.7%	18.1%	19.5%	17.3%	16.9%	16.1%	15.81	14	-5.86	-27.0%
NEW YORK	22.0%	21.6%	21.3%	21.4%	20.8%	20.6%	19.7%	19.5%	18.9%	18.7%	18.2%	18.0%	17.6%	17.4%	17.3%	16.94	19	-4.37	-20.5%
NORTH CAROLINA	21.1%	20.8%	21.4%	21.3%	20.7%	19.9%	18.0%	16.5%	16.0%	15.8%	15.6%	15.0%	14.8%	15.4%	15.3%	14.91	12	-6.54	-30.5%
NORTH DAKOTA	20.8%	21.4%	21.3%	21.2%	20.6%	20.4%	19.8%	19.1%	18.5%	18.3%	18.7%	18.0%	18.3%	19.0%	19.3%	19.11	34	-2.20	-10.3%
OHIO	24.9%	25.0%	25.4%	25.4%	25.0%	24.8%	24.5%	24.1%	23.3%	22.7%	22.0%	21.6%	21.6%	21.8%	22.0%	21.28	43	-4.17	-16.4%
OKLAHOMA	26.7%	26.8%	27.3%	27.5%	27.3%	26.6%	25.5%	23.0%	22.7%	22.3%	21.7%	21.5%	20.9%	20.7%	21.0%	20.19	38	-7.13	-26.1%
OREGON	20.6%	21.0%	21.5%	21.3%	20.0%	19.9%	19.2%	19.1%	18.6%	18.8%	18.3%	18.4%	17.1%	17.8%	18.5%	16.79	18	-4.70	-21.9%
PENNSYLVANIA	21.6%	22.1%	22.3%	22.2%	21.7%	21.7%	21.1%	20.5%	19.4%	19.2%	18.8%	18.3%	17.9%	17.6%	17.6%	17.29	22	-5.01	-22.5%
RHODE ISLAND	23.0%	23.8%	24.0%	23.9%	23.1%	21.7%	20.2%	20.3%	19.3%	18.4%	17.5%	16.9%	16.5%	17.0%	17.2%	17.30	23	-6.69	-27.9%
SOUTH CAROLINA	20.6%	20.5%	20.7%	20.6%	20.7%	20.2%	18.3%	17.2%	16.9%	15.9%	15.5%	15.3%	15.6%	15.3%	15.5%	14.56	10	-6.14	-29.7%
SOUTH DAKOTA	21.8%	21.8%	21.5%	21.5%	21.3%	21.4%	20.5%	20.0%	18.8%	18.1%	18.6%	18.0%	18.1%	18.2%	18.4%	18.06	27	-3.47	-16.1%
TENNESSEE	29.3%	29.5%	30.0%	29.3%	29.0%	27.7%	27.2%	25.0%	23.9%	24.0%	23.4%	23.1%	22.7%	22.5%	22.8%	21.57	45	-8.39	-28.0%

Partnership to Improve Dementia Care in Nursing Homes
Antipsychotic Drug use in Nursing Homes Trend Update
Quarterly Prevalence of Antipsychotic Use for Long-Stay Residents, States 2011Q2 to 2015Q1

State	2011Q2	2011Q3	2011Q4	2012Q1	2012Q2	2012Q3	2012Q4	2013Q1	2013Q2	2013Q3	2013Q4	2014Q1	2014Q2	2014Q3	2014Q4	2015Q1	Rank in 2015Q1 (lower=better)	Percentage point difference (2011Q4-2015Q1)	% Change
TEXAS	28.4%	28.5%	28.8%	28.9%	28.2%	28.3%	28.0%	27.9%	27.3%	27.0%	26.5%	25.7%	25.3%	24.6%	23.8%	23.17	50	-5.68	-19.7%
UTAH	26.9%	24.7%	27.1%	26.9%	27.1%	26.3%	26.4%	25.0%	24.5%	23.6%	21.7%	21.7%	23.1%	22.8%	21.2%	20.44	40	-6.67	-24.6%
VERMONT	25.5%	26.1%	25.4%	25.7%	26.2%	24.9%	23.4%	20.3%	20.2%	20.2%	18.8%	18.2%	18.0%	19.2%	18.9%	18.76	32	-6.64	-26.1%
VIRGINIA	22.4%	22.8%	23.0%	22.9%	21.8%	21.9%	22.1%	22.1%	21.0%	20.5%	19.7%	19.0%	18.2%	18.5%	18.4%	18.06	28	-4.99	-21.6%
WASHINGTON	22.8%	23.0%	22.3%	21.8%	21.7%	21.6%	20.6%	20.2%	19.7%	19.1%	18.6%	17.8%	17.5%	17.0%	17.6%	16.98	20	-5.35	-24.0%
WEST VIRGINIA	20.1%	20.3%	20.5%	21.5%	20.4%	20.7%	20.4%	19.8%	19.0%	18.0%	16.5%	16.1%	16.6%	16.2%	16.4%	16.74	17	-3.76	-18.3%
WISCONSIN	18.7%	18.7%	19.0%	18.9%	18.9%	19.0%	18.0%	17.7%	17.4%	16.8%	16.3%	15.4%	14.6%	14.2%	14.3%	13.91	5	-5.14	-27.0%
WYOMING	17.8%	18.4%	16.8%	16.9%	19.4%	16.8%	17.5%	17.0%	16.5%	17.2%	17.9%	16.5%	15.6%	15.1%	14.6%	13.95	6	-2.88	-17.1%

LTC Stats:

Nursing Facility Patient Characteristics Report

March 2015 Update

Prepared By

Research Department
American Health Care Association



© American Health Care Association, 2015

LTC Stats: Nursing Facility Patient Characteristics Report

Table of Contents

Table 1: Nursing Facility Patient Overview	3
Table 2: Patients by Payor – Number of Patients	4
Table 3: Patients by Payor – Percentage of Patients.....	5
Table 4: Activities of Daily Living – Bathing – Percent of Patients and Dependency.....	6
Table 5: Activities of Daily Living – Dressing – Percent of Patients and Dependency	7
Table 6: Activities of Daily Living – Eating – Percent of Patients and Dependency	8
Table 7: Activities of Daily Living – Toileting – Percent of Patients and Dependency.....	9
Table 8: Activities of Daily Living – Transferring – Percent of Patients and Dependency	10
Table 9: Medical Condition – Bladder and Bowel Status.....	11
Table 10: Medical Condition – Medications	12
Table 11: Medical Condition – Mobility	13
Table 12: Medical Condition – Mental Status	14
Table 13: Medical Condition – Weight Loss and Communication	15
Table 14: Medical Condition – Advance Directives and Vaccinations	16
Table 15: Medical Condition – Skin Integrity	17
Table 16: Medical Condition – Special Care.....	18
Glossary of Terms.....	21
Contact Information.....	23

Source: Center for Medicare & Medicaid Services Certification and Survey Provider Enhanced Reporting (CMS-CASPER) formerly OSCAR data as of March 2015

Table 1: Nursing Facility Patient Overview, March 2015

State	Facilities	Total Patients	Avg Facility Patients	Median Facility Patients	State Avg ADL Dependence
US	15,639	1,368,896	87.5	80.0	4.21
AK	18	624	34.7	19.0	4.18
AL	226	22,772	100.8	95.0	4.16
AR	229	17,719	77.4	75.0	3.99
AZ	146	11,487	78.7	75.0	4.19
CA	1,216	102,617	84.4	81.0	4.37
CO	214	16,355	76.4	73.0	4.07
CT	229	24,176	105.6	104.0	3.92
DC	19	2,521	132.7	114.0	4.09
DE	46	4,279	93.0	96.5	4.09
FL	688	73,492	106.8	108.0	4.27
GA	356	33,930	95.3	89.0	4.34
HI	46	3,643	79.2	78.5	4.62
IA	443	24,908	56.2	51.0	3.84
ID	78	3,918	50.2	44.0	4.21
IL	761	72,523	95.3	83.0	3.98
IN	528	39,043	73.9	68.0	4.33
KS	345	18,405	53.3	47.0	3.79
KY	288	23,319	81.0	82.0	4.28
LA	280	25,859	92.4	93.0	4.35
MA	414	41,055	99.2	102.5	4.09
MD	228	24,487	107.4	104.0	4.27
ME	103	6,176	60.0	56.0	4.35
MI	434	39,553	91.1	87.0	4.24
MN	378	26,586	70.3	57.5	3.96
MO	512	38,329	74.9	67.5	3.74
MS	205	16,124	78.7	74.0	4.30
MT	83	4,566	55.0	48.0	4.13
NC	421	36,887	87.6	89.0	4.41
ND	81	5,648	69.7	52.0	3.97
NE	219	12,038	55.0	45.0	4.09
NH	76	6,773	89.1	80.5	3.97
NJ	363	45,234	124.6	115.0	4.13
NM	71	5,431	76.5	79.0	4.29
NV	53	4,807	90.7	87.0	4.24
NY	629	105,167	167.2	145.0	4.35
OH	952	76,269	80.1	77.5	4.29
OK	308	18,958	61.6	57.0	3.73
OR	138	7,366	53.4	49.5	4.18
PA	698	79,449	113.8	104.5	4.25
RI	84	8,026	95.5	92.0	3.99
SC	188	16,772	89.2	85.5	4.47
SD	111	6,352	57.2	49.0	3.98
TN	322	28,961	89.9	86.0	4.47
TX	1,213	93,201	76.8	77.0	4.30
UT	99	5,541	56.0	51.0	4.50
VA	287	28,445	99.1	100.0	4.32
VT	37	2,685	72.6	69.0	4.11
WA	221	17,118	77.5	77.0	4.24
WI	389	27,412	70.5	61.0	4.03
WV	127	9,549	75.2	68.0	4.17
WY	39	2,341	60.0	52.0	3.93

Source: CMS Form 672: F78 - F93

LTC Stats: Nursing Facility Patient Characteristics Report - Research Department - American Health Care Association

Table 2: Nursing Facility Patients by Payor - Number of Patients, March 2015

State	Total Patients	Medicare	Medicaid	Other Payor
US	1,368,896	194,299	856,980	317,617
AK	624	55	499	70
AL	22,772	2,857	15,555	4,360
AR	17,719	2,082	11,878	3,759
AZ	11,487	1,779	6,821	2,887
CA	102,617	15,355	68,086	19,176
CO	16,355	1,977	9,771	4,607
CT	24,176	3,227	16,418	4,531
DC	2,521	286	2,053	182
DE	4,279	754	2,576	949
FL	73,492	15,211	41,861	16,420
GA	33,930	4,367	24,276	5,287
HI	3,643	384	2,222	1,037
IA	24,908	1,968	11,833	11,107
ID	3,918	675	2,464	779
IL	72,523	11,009	43,233	18,281
IN	39,043	6,317	24,366	8,360
KS	18,405	2,097	9,767	6,541
KY	23,319	3,499	15,368	4,452
LA	25,859	2,854	19,033	3,972
MA	41,055	5,185	25,020	10,850
MD	24,487	4,627	14,938	4,922
ME	6,176	909	4,021	1,246
MI	39,553	7,466	24,094	7,993
MN	26,586	2,873	14,251	9,462
MO	38,329	4,124	24,037	10,168
MS	16,124	2,359	12,180	1,585
MT	4,566	540	2,669	1,357
NC	36,887	5,881	23,945	7,061
ND	5,648	406	2,914	2,328
NE	12,038	1,497	6,307	4,234
NH	6,773	958	4,407	1,408
NJ	45,234	8,477	27,731	9,026
NM	5,431	649	3,469	1,313
NV	4,807	894	2,655	1,258
NY	105,167	12,461	72,947	19,759
OH	76,269	8,934	47,255	20,080
OK	18,958	2,226	12,517	4,215
OR	7,366	1,118	4,208	2,040
PA	79,449	8,464	49,526	21,459
RI	8,026	727	5,050	2,249
SC	16,772	3,014	10,270	3,488
SD	6,352	584	3,268	2,500
TN	28,961	5,077	17,688	6,196
TX	93,201	13,352	57,447	22,402
UT	5,541	1,006	2,863	1,672
VA	28,445	5,224	17,073	6,148
VT	2,685	461	1,716	508
WA	17,118	3,106	9,983	4,029
WI	27,412	3,559	15,787	8,066
WV	9,549	1,110	7,213	1,226
WY	2,341	278	1,451	612

Source: CMS Form 672: F75 - F78

LTC Stats: Nursing Facility Patient Characteristics Report - Research Department - American Health Care Association

Table 3: Nursing Facility Patients by Payor - Percentage of Patients, March 2015

State	Total Patients	Medicare	Medicaid	Other Payor
US	1,368,896	14.2%	62.6%	23.2%
AK	624	8.8%	80.0%	11.2%
AL	22,772	12.5%	68.3%	19.1%
AR	17,719	11.8%	67.0%	21.2%
AZ	11,487	15.5%	59.4%	25.1%
CA	102,617	15.0%	66.3%	18.7%
CO	16,355	12.1%	59.7%	28.2%
CT	24,176	13.3%	67.9%	18.7%
DC	2,521	11.3%	81.4%	7.2%
DE	4,279	17.6%	60.2%	22.2%
FL	73,492	20.7%	57.0%	22.3%
GA	33,930	12.9%	71.5%	15.6%
HI	3,643	10.5%	61.0%	28.5%
IA	24,908	7.9%	47.5%	44.6%
ID	3,918	17.2%	62.9%	19.9%
IL	72,523	15.2%	59.6%	25.2%
IN	39,043	16.2%	62.4%	21.4%
KS	18,405	11.4%	53.1%	35.5%
KY	23,319	15.0%	65.9%	19.1%
LA	25,859	11.0%	73.6%	15.4%
MA	41,055	12.6%	60.9%	26.4%
MD	24,487	18.9%	61.0%	20.1%
ME	6,176	14.7%	65.1%	20.2%
MI	39,553	18.9%	60.9%	20.2%
MN	26,586	10.8%	53.6%	35.6%
MO	38,329	10.8%	62.7%	26.5%
MS	16,124	14.6%	75.5%	9.8%
MT	4,566	11.8%	58.5%	29.7%
NC	36,887	15.9%	64.9%	19.1%
ND	5,648	7.2%	51.6%	41.2%
NE	12,038	12.4%	52.4%	35.2%
NH	6,773	14.1%	65.1%	20.8%
NJ	45,234	18.7%	61.3%	20.0%
NM	5,431	11.9%	63.9%	24.2%
NV	4,807	18.6%	55.2%	26.2%
NY	105,167	11.8%	69.4%	18.8%
OH	76,269	11.7%	62.0%	26.3%
OK	18,958	11.7%	66.0%	22.2%
OR	7,366	15.2%	57.1%	27.7%
PA	79,449	10.7%	62.3%	27.0%
RI	8,026	9.1%	62.9%	28.0%
SC	16,772	18.0%	61.2%	20.8%
SD	6,352	9.2%	51.4%	39.4%
TN	28,961	17.5%	61.1%	21.4%
TX	93,201	14.3%	61.6%	24.0%
UT	5,541	18.2%	51.7%	30.2%
VA	28,445	18.4%	60.0%	21.6%
VT	2,685	17.2%	63.9%	18.9%
WA	17,118	18.1%	58.3%	23.5%
WI	27,412	13.0%	57.6%	29.4%
WV	9,549	11.6%	75.5%	12.8%
WY	2,341	11.9%	62.0%	26.1%

Source: CMS Form 672: F75 - F78

LTC Stats: Nursing Facility Patient Characteristics Report - Research Department - American Health Care Association

Table 4: Activities of Daily Living - Bathing - Percent of Patients and Dependency, March 2015

State	Independent	Assisted	Dependent	Total Bathing Dependence
US	3.55%	63.74%	32.70%	96.45%
AK	4.01%	59.29%	36.70%	95.99%
AL	2.53%	60.44%	37.04%	97.47%
AR	3.26%	67.96%	28.78%	96.74%
AZ	3.99%	64.22%	31.79%	96.01%
CA	3.52%	58.05%	38.43%	96.48%
CO	4.08%	68.75%	27.17%	95.92%
CT	5.72%	59.97%	34.31%	94.28%
DC	6.70%	36.49%	56.80%	93.30%
DE	5.21%	50.48%	44.31%	94.79%
FL	2.71%	63.90%	33.40%	97.29%
GA	2.61%	52.61%	44.78%	97.39%
HI	0.82%	55.15%	44.03%	99.18%
IA	1.17%	81.73%	17.10%	98.83%
ID	1.66%	74.73%	23.61%	98.34%
IL	8.15%	71.93%	19.92%	91.85%
IN	2.84%	64.38%	32.79%	97.16%
KS	5.35%	71.42%	23.23%	94.65%
KY	1.59%	61.58%	36.83%	98.41%
LA	3.45%	65.73%	30.82%	96.55%
MA	3.98%	59.07%	36.95%	96.02%
MD	3.97%	45.32%	50.72%	96.03%
ME	2.17%	62.84%	34.99%	97.83%
MI	1.55%	74.09%	24.36%	98.45%
MN	3.56%	76.31%	20.13%	96.44%
MO	6.17%	71.34%	22.49%	93.83%
MS	2.88%	63.61%	33.51%	97.12%
MT	3.15%	79.17%	17.67%	96.85%
NC	3.06%	50.25%	46.69%	96.94%
ND	1.93%	77.16%	20.91%	98.07%
NE	1.71%	73.33%	24.95%	98.29%
NH	3.63%	72.38%	23.99%	96.37%
NJ	4.41%	59.97%	35.62%	95.59%
NM	3.09%	70.56%	26.35%	96.91%
NV	5.08%	62.12%	32.81%	94.92%
NY	3.28%	64.00%	32.72%	96.72%
OH	3.38%	69.63%	26.98%	96.62%
OK	4.96%	72.22%	22.82%	95.04%
OR	2.91%	72.66%	24.44%	97.09%
PA	3.90%	57.91%	38.19%	96.10%
RI	4.00%	66.91%	29.09%	96.00%
SC	1.07%	55.34%	43.59%	98.93%
SD	1.94%	78.68%	19.38%	98.06%
TN	1.70%	57.38%	40.92%	98.30%
TX	2.95%	61.05%	36.00%	97.05%
UT	2.65%	70.98%	26.37%	97.35%
VA	3.64%	51.64%	44.72%	96.36%
VT	3.13%	65.77%	31.10%	96.87%
WA	2.64%	74.68%	22.68%	97.36%
WI	2.79%	72.71%	24.50%	97.21%
WV	3.53%	47.98%	48.49%	96.47%
WY	2.69%	77.45%	19.86%	97.31%

Source: CMS Form 672: F78 - F81

LTC Stats: Nursing Facility Patient Characteristics Report - Research Department - American Health Care Association

Table 5: Activities of Daily Living - Dressing - Percent of Patients and Dependency, March 2015

State	Independent	Assisted	Dependent	Total Dressing Dependence
US	7.99%	72.87%	19.14%	92.01%
AK	8.01%	78.37%	13.62%	91.99%
AL	6.87%	68.19%	24.94%	93.13%
AR	10.63%	69.58%	19.79%	89.37%
AZ	9.36%	71.37%	19.27%	90.64%
CA	6.22%	69.89%	23.89%	93.78%
CO	11.23%	76.73%	12.04%	88.77%
CT	10.11%	65.48%	24.40%	89.89%
DC	9.52%	51.41%	39.07%	90.48%
DE	8.90%	67.35%	23.74%	91.10%
FL	6.57%	69.90%	23.53%	93.43%
GA	6.39%	67.20%	26.41%	93.61%
HI	1.43%	71.01%	27.56%	98.57%
IA	11.77%	78.96%	9.27%	88.23%
ID	7.86%	80.50%	11.64%	92.14%
IL	12.53%	76.59%	10.88%	87.47%
IN	6.74%	80.14%	13.12%	93.26%
KS	15.45%	72.88%	11.67%	84.55%
KY	5.07%	73.12%	21.81%	94.93%
LA	9.39%	74.41%	16.21%	90.61%
MA	5.77%	64.93%	29.30%	94.23%
MD	6.17%	60.64%	33.19%	93.83%
ME	2.96%	81.19%	15.85%	97.04%
MI	5.76%	80.67%	13.57%	94.24%
MN	10.65%	81.28%	8.07%	89.35%
MO	17.47%	67.89%	14.64%	82.53%
MS	7.89%	76.80%	15.31%	92.11%
MT	11.63%	79.22%	9.15%	88.37%
NC	5.13%	71.84%	23.03%	94.87%
ND	9.26%	84.90%	5.84%	90.74%
NE	10.64%	78.25%	11.11%	89.36%
NH	8.12%	79.05%	12.83%	91.88%
NJ	8.48%	64.09%	27.43%	91.52%
NM	7.70%	79.62%	12.69%	92.30%
NV	8.59%	73.00%	18.41%	91.41%
NY	6.40%	70.91%	22.69%	93.60%
OH	7.06%	79.64%	13.31%	92.94%
OK	17.63%	66.61%	15.76%	82.37%
OR	6.01%	81.47%	12.52%	93.99%
PA	6.49%	74.09%	19.42%	93.51%
RI	8.09%	74.05%	17.87%	91.91%
SC	2.44%	72.49%	25.07%	97.56%
SD	11.68%	81.83%	6.49%	88.32%
TN	3.75%	72.95%	23.29%	96.25%
TX	8.20%	73.65%	18.14%	91.80%
UT	4.66%	82.46%	12.89%	95.34%
VA	6.83%	66.19%	26.97%	93.17%
VT	6.74%	74.15%	19.11%	93.26%
WA	6.90%	80.15%	12.95%	93.10%
WI	8.34%	79.78%	11.87%	91.66%
WV	8.22%	72.61%	19.16%	91.78%
WY	12.17%	77.92%	9.91%	87.83%

Source: CMS Form 672: F78, F82 - F84

LTC Stats: Nursing Facility Patient Characteristics Report - Research Department - American Health Care Association

Table 6: Activities of Daily Living - Eating - Percent of Patients and Dependency, March 2015

State	Independent	Assisted	Dependent	Total Eating Dependence
US	41.65%	45.97%	12.38%	58.35%
AK	43.59%	44.39%	12.02%	56.41%
AL	48.00%	34.81%	17.20%	52.00%
AR	47.85%	39.61%	12.54%	52.15%
AZ	42.95%	45.45%	11.60%	57.05%
CA	33.37%	47.83%	18.81%	66.63%
CO	45.70%	48.08%	6.22%	54.30%
CT	54.72%	30.89%	14.39%	45.28%
DC	42.76%	36.89%	20.35%	57.24%
DE	49.71%	36.50%	13.79%	50.29%
FL	41.88%	43.17%	14.95%	58.12%
GA	33.96%	49.41%	16.63%	66.04%
HI	29.45%	45.32%	25.23%	70.55%
IA	61.25%	33.15%	5.60%	38.75%
ID	46.45%	45.97%	7.58%	53.55%
IL	43.27%	48.25%	8.48%	56.73%
IN	34.24%	57.29%	8.47%	65.76%
KS	54.80%	38.51%	6.69%	45.20%
KY	45.19%	40.15%	14.66%	54.81%
LA	24.00%	66.06%	9.93%	76.00%
MA	53.43%	34.10%	12.47%	46.57%
MD	41.69%	41.34%	16.98%	58.31%
ME	46.47%	43.72%	9.81%	53.53%
MI	49.21%	41.27%	9.52%	50.79%
MN	55.33%	38.40%	6.27%	44.67%
MO	51.86%	39.86%	8.28%	48.14%
MS	34.67%	51.60%	13.73%	65.33%
MT	38.87%	54.93%	6.20%	61.13%
NC	35.32%	51.50%	13.18%	64.68%
ND	55.08%	39.94%	4.98%	44.92%
NE	47.67%	45.36%	6.97%	52.33%
NH	55.13%	37.04%	7.83%	44.87%
NJ	44.47%	39.29%	16.24%	55.53%
NM	35.26%	57.06%	7.68%	64.74%
NV	38.61%	47.45%	13.94%	61.39%
NY	33.51%	50.27%	16.21%	66.49%
OH	38.53%	52.54%	8.93%	61.47%
OK	53.14%	37.03%	9.83%	46.86%
OR	53.33%	37.54%	9.14%	46.67%
PA	43.26%	45.54%	11.19%	56.74%
RI	55.53%	35.42%	9.05%	44.47%
SC	38.34%	44.64%	17.02%	61.66%
SD	52.76%	42.52%	4.72%	47.24%
TN	33.74%	49.75%	16.52%	66.26%
TX	33.16%	54.96%	11.88%	66.84%
UT	26.66%	65.31%	8.03%	73.34%
VA	35.04%	49.48%	15.48%	64.96%
VT	52.55%	35.31%	12.14%	47.45%
WA	45.29%	44.73%	9.98%	54.71%
WI	55.98%	36.49%	7.52%	44.02%
WV	44.83%	43.94%	11.23%	55.17%
WY	51.69%	42.63%	5.68%	48.31%

Source: CMS Form 672: F78, F91 - F93

LTC Stats: Nursing Facility Patient Characteristics Report - Research Department - American Health Care Association

Table 7: Activities of Daily Living - Toileting - Percent of Patients and Dependency, March 2015

State	Independent	Assisted	Dependent	Total Toileting Dependence
US	11.77%	65.72%	22.51%	88.23%
AK	11.70%	65.06%	23.24%	88.30%
AL	12.41%	55.09%	32.50%	87.59%
AR	17.16%	58.72%	24.12%	82.84%
AZ	11.11%	64.89%	24.00%	88.89%
CA	9.10%	61.01%	29.89%	90.90%
CO	14.23%	70.88%	14.89%	85.77%
CT	16.61%	57.41%	25.98%	83.39%
DC	14.60%	42.40%	43.00%	85.40%
DE	11.92%	61.07%	27.02%	88.08%
FL	9.93%	63.04%	27.03%	90.07%
GA	10.30%	55.97%	33.73%	89.70%
HI	2.77%	59.04%	38.18%	97.23%
IA	18.07%	69.78%	12.16%	81.93%
ID	10.31%	71.64%	18.04%	89.69%
IL	17.97%	67.49%	14.54%	82.03%
IN	9.89%	75.47%	14.64%	90.11%
KS	20.64%	65.12%	14.25%	79.36%
KY	8.88%	66.68%	24.44%	91.12%
LA	13.09%	68.59%	18.32%	86.91%
MA	12.33%	61.74%	25.93%	87.67%
MD	9.32%	55.07%	35.61%	90.68%
ME	4.91%	77.53%	17.57%	95.09%
MI	8.32%	74.66%	17.02%	91.68%
MN	14.73%	74.67%	10.60%	85.27%
MO	23.05%	59.35%	17.60%	76.95%
MS	11.01%	67.58%	21.41%	88.99%
MT	14.59%	72.16%	13.25%	85.41%
NC	7.06%	67.52%	25.42%	92.94%
ND	15.47%	76.31%	8.22%	84.53%
NE	13.18%	72.82%	14.00%	86.82%
NH	15.21%	69.35%	15.44%	84.79%
NJ	13.47%	57.51%	29.02%	86.53%
NM	10.90%	74.48%	14.62%	89.10%
NV	10.38%	67.76%	21.86%	89.62%
NY	9.40%	64.54%	26.06%	90.60%
OH	9.99%	73.44%	16.57%	90.01%
OK	23.79%	56.74%	19.47%	76.21%
OR	8.73%	69.96%	21.31%	91.27%
PA	9.59%	69.14%	21.27%	90.41%
RI	13.71%	67.07%	19.23%	86.29%
SC	4.48%	62.78%	32.74%	95.52%
SD	15.66%	77.16%	7.18%	84.34%
TN	6.08%	66.44%	27.47%	93.92%
TX	11.73%	66.10%	22.17%	88.27%
UT	6.53%	78.51%	14.96%	93.47%
VA	9.85%	60.61%	29.54%	90.15%
VT	10.17%	65.18%	24.66%	89.83%
WA	9.69%	73.24%	17.07%	90.31%
WI	13.23%	71.43%	15.34%	86.77%
WV	11.71%	66.20%	22.10%	88.29%
WY	16.83%	68.52%	14.65%	83.17%

Source: CMS Form 672: F78, F88 - F90

LTC Stats: Nursing Facility Patient Characteristics Report - Research Department - American Health Care Association

Table 8: Activities of Daily Living - Transferring - Percent of Patients and Dependency, March 2015

State	Independent	Assisted	Dependent	Total Transferring Dependent
US	14.47%	65.27%	20.26%	85.53%
AK	14.74%	56.09%	29.17%	85.26%
AL	14.43%	56.35%	29.22%	85.57%
AR	21.63%	57.46%	20.91%	78.37%
AZ	13.10%	64.98%	21.92%	86.90%
CA	10.90%	63.17%	25.94%	89.10%
CO	17.52%	68.94%	13.54%	82.48%
CT	20.41%	56.39%	23.19%	79.59%
DC	17.10%	46.01%	36.89%	82.90%
DE	15.40%	59.64%	24.96%	84.60%
FL	11.46%	64.67%	23.87%	88.54%
GA	12.80%	59.91%	27.30%	87.20%
HI	3.43%	64.81%	31.76%	96.57%
IA	24.12%	64.09%	11.79%	75.88%
ID	12.79%	70.27%	16.95%	87.21%
IL	20.01%	66.17%	13.82%	79.99%
IN	12.81%	72.99%	14.19%	87.19%
KS	24.74%	62.01%	13.25%	75.26%
KY	11.51%	65.97%	22.52%	88.49%
LA	14.94%	69.73%	15.33%	85.06%
MA	15.47%	63.19%	21.34%	84.53%
MD	11.77%	57.73%	30.50%	88.23%
ME	8.23%	75.28%	16.50%	91.77%
MI	11.12%	71.38%	17.50%	88.88%
MN	19.24%	67.84%	12.92%	80.76%
MO	27.41%	57.14%	15.45%	72.59%
MS	13.45%	65.39%	21.17%	86.55%
MT	19.21%	70.35%	10.45%	80.79%
NC	8.91%	68.08%	23.00%	91.09%
ND	20.89%	68.80%	10.30%	79.11%
NE	17.92%	68.44%	13.64%	82.08%
NH	21.16%	63.68%	15.16%	78.84%
NJ	15.92%	59.27%	24.81%	84.08%
NM	14.47%	72.49%	13.04%	85.53%
NV	12.96%	67.05%	19.99%	87.04%
NY	12.22%	63.82%	23.95%	87.78%
OH	12.23%	71.59%	16.18%	87.77%
OK	27.82%	55.45%	16.73%	72.18%
OR	11.11%	69.59%	19.30%	88.89%
PA	12.00%	67.84%	20.17%	88.00%
RI	19.21%	64.98%	15.81%	80.79%
SC	6.24%	67.01%	26.75%	93.76%
SD	19.82%	72.02%	8.15%	80.18%
TN	7.71%	68.01%	24.28%	92.29%
TX	13.89%	67.38%	18.73%	86.11%
UT	9.02%	77.42%	13.55%	90.98%
VA	12.29%	61.95%	25.77%	87.71%
VT	16.61%	61.79%	21.60%	83.39%
WA	11.36%	72.57%	16.08%	88.64%
WI	16.95%	66.76%	16.28%	83.05%
WV	15.00%	64.51%	20.49%	85.00%
WY	23.79%	63.56%	12.64%	76.21%

Source: CMS Form 672: F78, F85 - F87

LTC Stats: Nursing Facility Patient Characteristics Report - Research Department - American Health Care Association

Table 9: Medical Condition - Bladder and Bowel Status, March 2015

State	Catheter	Catheter at Admission*	Bladder Incontinent	Bowel Incontinent	Training Program**
US	5.67%	4.27%	62.36%	45.66%	38.52%
AK	11.06%	7.85%	58.65%	43.91%	38.62%
AL	4.76%	3.57%	65.20%	51.75%	30.74%
AR	5.20%	3.60%	63.19%	47.34%	13.80%
AZ	9.31%	8.06%	58.33%	47.27%	24.88%
CA	6.23%	5.21%	53.59%	45.99%	39.43%
CO	7.62%	5.86%	61.86%	39.52%	39.08%
CT	4.35%	3.21%	59.60%	44.06%	40.90%
DC	2.90%	2.58%	72.51%	63.19%	16.62%
DE	6.96%	3.62%	65.25%	47.44%	61.23%
FL	5.66%	4.76%	59.76%	50.25%	34.32%
GA	4.54%	3.32%	68.64%	56.21%	36.76%
HI	3.57%	2.64%	71.01%	56.52%	34.26%
IA	6.05%	3.85%	65.14%	30.46%	25.16%
ID	8.37%	6.89%	59.75%	35.07%	56.10%
IL	5.14%	3.89%	54.19%	34.74%	41.02%
IN	5.16%	3.88%	65.78%	45.03%	61.28%
KS	5.02%	3.78%	63.32%	35.14%	70.56%
KY	6.39%	4.63%	63.18%	48.30%	34.99%
LA	4.89%	2.65%	64.70%	47.77%	20.95%
MA	5.03%	3.84%	62.38%	46.94%	31.75%
MD	5.27%	3.97%	66.20%	54.96%	63.35%
ME	6.23%	4.71%	69.06%	43.35%	67.33%
MI	6.55%	4.88%	60.29%	42.13%	44.96%
MN	5.91%	4.33%	65.35%	37.93%	56.22%
MO	4.75%	3.48%	59.25%	35.40%	32.34%
MS	4.46%	2.60%	70.14%	53.57%	15.86%
MT	6.90%	5.06%	60.29%	31.32%	62.97%
NC	5.48%	4.04%	68.74%	55.20%	27.00%
ND	6.53%	4.60%	66.63%	35.48%	38.99%
NE	7.52%	4.95%	66.01%	31.96%	47.52%
NH	6.05%	4.53%	62.69%	35.23%	62.41%
NJ	5.34%	4.42%	56.29%	45.84%	26.88%
NM	5.80%	4.77%	62.59%	46.47%	45.28%
NV	8.76%	7.74%	58.10%	47.85%	10.78%
NY	5.14%	3.74%	63.86%	50.50%	26.73%
OH	5.47%	4.23%	58.59%	37.41%	46.79%
OK	5.77%	4.37%	57.96%	39.76%	38.65%
OR	9.84%	7.72%	59.46%	42.94%	37.89%
PA	6.19%	4.51%	66.42%	48.63%	45.70%
RI	3.97%	2.69%	61.54%	41.49%	57.29%
SC	4.55%	3.15%	70.07%	58.42%	25.78%
SD	6.45%	4.31%	68.56%	31.64%	64.61%
TN	6.49%	4.24%	66.25%	51.77%	46.93%
TX	5.31%	4.01%	68.12%	52.51%	24.64%
UT	7.20%	5.76%	62.19%	41.58%	29.80%
VA	5.49%	4.13%	65.33%	53.33%	30.86%
VT	6.52%	5.33%	65.96%	44.51%	40.74%
WA	8.47%	6.51%	62.47%	46.45%	33.39%
WI	6.62%	5.05%	62.05%	35.43%	74.88%
WV	5.97%	4.60%	64.78%	45.07%	76.03%
WY	6.88%	5.17%	62.45%	32.25%	87.78%

Source: CMS Form 672: F78, F94 - F99. *As a percentage of those patients with a catheter at the time of the survey. **Total patients in bladder and/or bowel training.

Table 10: Medical Condition - Medications, March 2015

State	Psychoactive Medication*	Antibiotics	Pain Management
US	63.94%	9.15%	47.13%
AK	56.57%	9.13%	67.79%
AL	71.36%	8.92%	53.63%
AR	66.18%	9.20%	33.20%
AZ	62.69%	13.76%	53.21%
CA	54.19%	8.74%	39.22%
CO	60.00%	8.77%	59.71%
CT	70.07%	7.63%	37.31%
DC	53.51%	4.64%	39.79%
DE	58.21%	9.58%	48.82%
FL	64.43%	10.55%	40.36%
GA	67.62%	8.50%	45.19%
HI	44.44%	7.77%	42.99%
IA	65.58%	8.65%	62.31%
ID	66.95%	11.33%	66.18%
IL	64.78%	8.70%	40.85%
IN	65.95%	10.07%	50.58%
KS	68.57%	10.46%	58.56%
KY	68.94%	9.68%	43.43%
LA	68.40%	10.56%	36.75%
MA	71.22%	7.01%	46.45%
MD	59.26%	9.94%	43.91%
ME	66.92%	9.00%	61.90%
MI	61.36%	9.03%	57.08%
MN	60.51%	8.21%	65.95%
MO	70.31%	8.79%	47.23%
MS	66.59%	9.63%	45.08%
MT	63.58%	8.67%	61.04%
NC	65.60%	10.81%	47.06%
ND	65.72%	8.37%	67.78%
NE	66.61%	10.59%	63.80%
NH	66.34%	6.82%	59.01%
NJ	56.81%	7.87%	39.32%
NM	59.36%	8.73%	44.19%
NV	54.63%	13.13%	43.52%
NY	56.75%	7.63%	45.07%
OH	66.46%	9.98%	46.21%
OK	70.84%	8.52%	55.46%
OR	63.09%	10.64%	61.35%
PA	64.56%	8.21%	46.90%
RI	68.65%	7.74%	52.54%
SC	63.29%	9.66%	47.82%
SD	63.18%	9.73%	64.48%
TN	71.68%	10.55%	51.39%
TX	67.49%	9.90%	43.50%
UT	67.42%	12.62%	60.04%
VA	64.03%	10.93%	42.98%
VT	66.93%	7.23%	63.31%
WA	61.65%	10.25%	53.28%
WI	62.79%	7.06%	61.92%
WV	64.57%	10.84%	56.53%
WY	65.01%	10.38%	61.77%

Source: CMS Form 672: F78, F133 - F139. *Includes antipsychotic, antianxiety, antidepressant, and hypnotic medications.

LTC Stats: Nursing Facility Patient Characteristics Report - Research Department - American Health Care Association

Table 11: Medical Condition - Mobility, March 2015

State	Bedfast	Chairbound	Ambulatory*	Physically Restrained	W/Orders for Restraint**	Contractures
US	3.63%	65.69%	39.07%	1.74%	0.45%	23.63%
AK	8.97%	65.06%	35.58%	1.44%	1.28%	39.10%
AL	7.37%	69.99%	24.43%	1.69%	0.47%	35.38%
AR	4.97%	65.89%	30.26%	1.51%	0.29%	17.17%
AZ	6.13%	67.04%	36.23%	0.69%	0.13%	19.27%
CA	4.72%	66.89%	41.15%	2.57%	1.17%	26.00%
CO	2.16%	62.45%	35.45%	1.12%	0.15%	18.79%
CT	1.69%	59.30%	51.89%	1.01%	0.20%	15.37%
DC	6.39%	64.97%	28.32%	1.55%	0.12%	16.86%
DE	4.21%	67.31%	35.08%	0.84%	0.14%	30.40%
FL	3.58%	71.79%	32.17%	1.57%	0.34%	18.27%
GA	6.23%	67.59%	27.25%	1.24%	0.23%	30.88%
HI	6.56%	72.25%	34.86%	2.11%	0.77%	33.71%
IA	1.18%	52.36%	55.90%	1.44%	0.29%	24.75%
ID	3.85%	73.33%	43.82%	3.06%	1.58%	30.14%
IL	1.60%	59.06%	50.99%	1.75%	0.53%	22.31%
IN	2.57%	68.29%	45.78%	0.90%	0.18%	18.84%
KS	2.11%	55.07%	42.84%	0.66%	0.28%	19.05%
KY	5.67%	64.52%	30.41%	2.55%	0.40%	24.07%
LA	4.37%	69.02%	27.46%	2.76%	0.39%	25.36%
MA	1.94%	56.68%	51.40%	1.41%	0.23%	19.37%
MD	5.72%	66.51%	30.87%	1.23%	0.18%	22.26%
ME	3.84%	59.03%	50.10%	0.52%	0.15%	23.59%
MI	3.30%	70.13%	38.16%	1.86%	0.54%	19.97%
MN	1.18%	65.18%	55.88%	0.68%	0.12%	18.36%
MO	1.91%	61.55%	43.78%	2.06%	0.73%	19.72%
MS	6.08%	71.99%	22.42%	3.91%	0.38%	40.77%
MT	1.23%	63.36%	48.62%	1.91%	0.42%	36.14%
NC	5.09%	72.57%	27.68%	1.34%	0.16%	23.43%
ND	1.54%	68.27%	57.74%	0.64%	0.09%	35.82%
NE	1.22%	65.40%	54.60%	1.20%	0.20%	20.34%
NH	4.30%	57.76%	56.33%	0.75%	0.30%	28.61%
NJ	3.79%	67.74%	34.93%	2.32%	0.74%	16.70%
NM	1.80%	69.64%	36.84%	0.70%	0.11%	20.95%
NV	9.59%	68.19%	35.41%	1.89%	0.48%	21.14%
NY	2.04%	65.07%	41.75%	2.50%	0.72%	30.71%
OH	2.95%	64.45%	50.00%	1.34%	0.25%	24.08%
OK	4.97%	59.23%	38.51%	0.98%	0.21%	20.18%
OR	5.99%	63.66%	32.24%	0.80%	0.14%	23.78%
PA	3.89%	61.88%	34.49%	1.34%	0.23%	21.32%
RI	1.30%	58.66%	64.14%	0.45%	0.21%	23.52%
SC	6.60%	74.68%	20.95%	2.99%	0.46%	30.63%
SD	0.98%	65.88%	55.24%	1.29%	0.35%	35.25%
TN	6.04%	72.33%	33.02%	3.11%	0.39%	24.57%
TX	4.27%	69.98%	26.63%	2.04%	0.60%	24.11%
UT	2.76%	63.54%	48.10%	2.44%	0.54%	19.85%
VA	5.24%	68.87%	26.33%	0.95%	0.23%	25.78%
VT	3.76%	60.71%	55.08%	0.26%	0.04%	23.46%
WA	4.32%	69.57%	40.30%	1.22%	0.55%	22.41%
WI	2.24%	65.42%	47.62%	0.65%	0.14%	22.39%
WV	5.28%	66.75%	40.38%	2.95%	0.38%	34.63%
WY	2.35%	59.25%	51.69%	1.75%	0.60%	22.13%

Source: CMS Form 672: F78, F100 - F106. *Percentage of patients that ambulate independently or w/assistive devices. **As a percentage of patients physically restrained.

Table 12: Medical Condition - Mental Status, March 2015

State	Mental Retardation	Depression	Psych Diagnosis	Dementia	Behavior Symptoms
US	2.14%	41.75%	31.74%	47.01%	23.61%
AK	2.24%	35.10%	15.54%	37.66%	24.52%
AL	4.92%	37.49%	33.51%	55.06%	22.38%
AR	3.41%	34.59%	33.44%	50.09%	20.67%
AZ	0.77%	39.66%	25.71%	38.10%	23.71%
CA	2.03%	28.48%	28.15%	36.45%	19.87%
CO	1.42%	48.65%	23.30%	46.82%	26.84%
CT	2.11%	39.87%	26.13%	50.66%	20.07%
DC	0.75%	21.22%	23.84%	47.32%	18.13%
DE	1.71%	37.60%	29.35%	49.50%	34.42%
FL	1.23%	39.28%	30.89%	45.82%	21.81%
GA	3.62%	48.04%	36.39%	50.83%	28.56%
HI	1.43%	33.27%	8.92%	54.30%	21.77%
IA	2.85%	53.14%	28.18%	47.95%	25.02%
ID	3.29%	50.23%	29.63%	37.47%	28.59%
IL	1.28%	49.51%	33.98%	41.25%	26.80%
IN	2.89%	39.97%	29.21%	50.26%	21.57%
KS	1.28%	49.73%	36.03%	47.60%	28.22%
KY	2.91%	40.98%	35.70%	49.74%	23.08%
LA	1.61%	33.20%	43.97%	39.46%	23.64%
MA	1.16%	42.50%	34.62%	54.85%	29.97%
MD	1.42%	36.93%	24.29%	42.92%	17.94%
ME	1.20%	50.86%	27.43%	54.86%	32.89%
MI	1.54%	38.52%	27.69%	52.97%	22.07%
MN	0.73%	47.51%	28.88%	46.32%	30.76%
MO	2.93%	41.31%	36.15%	43.95%	23.24%
MS	2.49%	32.90%	41.48%	47.26%	23.21%
MT	2.61%	47.42%	26.70%	45.47%	21.81%
NC	2.09%	37.90%	29.90%	44.96%	23.34%
ND	1.74%	57.83%	34.05%	52.83%	27.71%
NE	2.18%	51.23%	33.14%	44.01%	29.37%
NH	1.40%	46.92%	37.62%	56.08%	28.73%
NJ	3.07%	29.93%	24.20%	42.74%	19.28%
NM	1.60%	35.06%	25.69%	44.12%	26.57%
NV	1.93%	34.43%	27.61%	33.20%	17.14%
NY	1.90%	41.14%	25.15%	49.59%	19.43%
OH	1.98%	54.53%	39.85%	47.73%	28.18%
OK	2.85%	46.32%	34.11%	41.34%	22.41%
OR	1.82%	39.59%	23.42%	35.30%	23.00%
PA	2.76%	39.70%	31.81%	46.98%	21.59%
RI	0.80%	42.96%	30.61%	52.75%	19.49%
SC	2.59%	38.56%	30.18%	53.20%	24.95%
SD	1.81%	56.12%	31.19%	48.65%	29.90%
TN	2.25%	42.39%	42.67%	52.86%	25.54%
TX	2.37%	45.74%	38.37%	55.49%	25.10%
UT	2.78%	49.90%	27.16%	35.17%	31.89%
VA	2.88%	38.14%	29.47%	44.31%	20.99%
VT	1.42%	56.20%	31.99%	53.04%	31.17%
WA	3.17%	48.57%	25.48%	42.13%	24.41%
WI	1.20%	45.85%	29.84%	47.49%	23.18%
WV	2.86%	46.74%	40.25%	54.75%	25.86%
WY	1.28%	57.24%	26.48%	50.02%	25.54%

Source: CMS Form 672: F78, F108 - F114

LTC Stats: Nursing Facility Patient Characteristics Report - Research Department - American Health Care Association

Table 13: Medical Condition - Weight Loss and Communication, March 2015

State	Unplanned Weight Loss/Gain	Non-English Speaking	Non-Oral Communication Devices
US	7.82%	3.38%	1.37%
AK	10.10%	3.04%	4.33%
AL	10.68%	0.22%	1.11%
AR	9.28%	0.36%	1.00%
AZ	7.31%	5.60%	2.77%
CA	6.93%	13.75%	4.69%
CO	7.91%	2.18%	1.31%
CT	4.97%	3.94%	0.73%
DC	5.20%	1.31%	0.36%
DE	7.10%	1.10%	0.91%
FL	4.91%	4.43%	0.93%
GA	9.23%	0.93%	0.81%
HI	7.82%	6.97%	3.71%
IA	9.39%	0.39%	1.18%
ID	7.89%	1.38%	1.28%
IL	8.73%	3.22%	1.74%
IN	8.97%	0.37%	0.80%
KS	8.60%	0.81%	0.85%
KY	7.89%	0.35%	0.86%
LA	10.19%	0.50%	0.97%
MA	5.12%	5.30%	1.28%
MD	7.35%	2.61%	0.96%
ME	9.38%	0.37%	0.65%
MI	8.15%	1.14%	1.48%
MN	7.42%	0.98%	0.79%
MO	8.61%	0.48%	0.65%
MS	9.97%	0.23%	1.07%
MT	9.31%	0.39%	0.74%
NC	10.24%	0.48%	0.74%
ND	9.42%	0.19%	1.04%
NE	8.50%	0.75%	0.83%
NH	9.36%	0.93%	0.72%
NJ	5.71%	7.48%	2.42%
NM	7.38%	6.83%	0.57%
NV	6.66%	3.60%	1.73%
NY	5.77%	7.78%	1.23%
OH	8.94%	0.72%	0.66%
OK	10.62%	0.62%	0.78%
OR	8.77%	1.81%	1.36%
PA	8.52%	1.55%	0.93%
RI	6.78%	4.25%	0.88%
SC	10.82%	0.25%	0.87%
SD	9.79%	0.33%	1.01%
TN	7.78%	0.37%	1.08%
TX	7.12%	3.40%	1.02%
UT	7.58%	2.44%	1.06%
VA	8.36%	1.18%	0.89%
VT	7.26%	0.34%	1.01%
WA	7.54%	2.72%	1.28%
WI	8.54%	0.56%	0.96%
WV	11.60%	0.66%	1.30%
WY	9.35%	0.47%	0.94%

Source: CMS Form 672: F78, F140 - F142

LTC Stats: Nursing Facility Patient Characteristics Report - Research Department - American Health Care Association

Table 14: Medical Condition - Advance Directives and Vaccinations, March 2015

State	Advance Directives	Influenza Immunization	Pneumococcal Vaccine
US	54.41%	68.21%	64.86%
AK	67.15%	74.04%	79.65%
AL	35.50%	66.07%	59.63%
AR	70.33%	83.16%	81.90%
AZ	74.63%	62.72%	60.10%
CA	46.42%	67.35%	63.45%
CO	79.17%	64.41%	63.52%
CT	69.37%	75.00%	69.95%
DC	40.94%	64.14%	55.22%
DE	43.94%	70.41%	73.66%
FL	57.37%	54.01%	42.78%
GA	40.31%	64.80%	62.75%
HI	67.28%	81.94%	84.98%
IA	63.55%	79.12%	81.40%
ID	66.05%	64.68%	69.24%
IL	50.84%	62.32%	57.08%
IN	57.04%	66.40%	61.55%
KS	72.22%	73.40%	69.48%
KY	52.86%	70.64%	65.25%
LA	30.28%	67.68%	70.40%
MA	73.60%	76.49%	69.44%
MD	55.70%	66.69%	59.33%
ME	63.12%	74.74%	75.19%
MI	74.52%	64.20%	65.66%
MN	60.09%	75.29%	79.61%
MO	53.71%	68.02%	62.32%
MS	32.54%	65.91%	70.36%
MT	68.48%	71.07%	70.00%
NC	46.23%	65.15%	62.38%
ND	58.82%	77.53%	81.80%
NE	62.28%	74.85%	76.02%
NH	83.01%	77.91%	81.69%
NJ	37.79%	70.17%	65.54%
NM	42.99%	56.09%	55.22%
NV	36.38%	49.91%	39.75%
NY	62.65%	77.74%	73.70%
OH	53.96%	62.84%	60.01%
OK	31.61%	67.69%	56.27%
OR	38.58%	63.33%	67.20%
PA	59.04%	72.88%	68.04%
RI	61.81%	73.15%	73.54%
SC	48.62%	68.85%	77.22%
SD	58.44%	79.77%	84.56%
TN	67.86%	66.09%	62.56%
TX	34.54%	60.31%	56.69%
UT	64.93%	63.63%	61.70%
VA	41.57%	70.30%	64.06%
VT	63.87%	76.57%	78.21%
WA	70.32%	68.17%	66.16%
WI	79.60%	82.70%	85.43%
WV	50.69%	65.24%	68.80%
WY	65.95%	70.61%	71.59%

Source: CMS Form 672: F78, F143 - F145

LTC Stats: Nursing Facility Patient Characteristics Report - Research Department - American Health Care Association

Table 15: Medical Condition - Skin Integrity, March 2015

State	Pressure Sores	Pressure Sores at Admission	Preventative Skin Care	Rashes
US	6.25%	3.62%	76.99%	2.63%
AK	5.61%	3.04%	73.24%	4.17%
AL	5.94%	3.68%	82.66%	2.60%
AR	5.44%	2.89%	27.59%	2.47%
AZ	7.83%	4.87%	69.84%	3.19%
CA	6.61%	4.70%	64.35%	3.23%
CO	4.89%	2.60%	82.95%	1.65%
CT	4.52%	2.27%	69.48%	3.95%
DC	6.90%	4.40%	80.01%	1.03%
DE	5.14%	2.94%	83.03%	5.73%
FL	7.07%	4.93%	81.82%	3.32%
GA	6.84%	4.21%	79.35%	2.25%
HI	4.20%	2.74%	76.64%	5.46%
IA	3.89%	1.39%	77.54%	1.90%
ID	4.85%	3.37%	84.46%	3.27%
IL	5.81%	3.40%	76.88%	2.26%
IN	6.10%	2.86%	80.78%	1.30%
KS	4.49%	2.06%	70.10%	2.96%
KY	6.61%	3.15%	81.97%	1.45%
LA	8.53%	3.92%	80.85%	2.11%
MA	4.62%	2.19%	84.40%	1.81%
MD	7.27%	4.68%	81.20%	2.52%
ME	5.05%	2.51%	74.11%	3.35%
MI	6.13%	4.09%	81.34%	2.48%
MN	4.29%	2.02%	73.08%	2.57%
MO	4.98%	2.21%	70.55%	1.88%
MS	7.50%	3.77%	76.89%	1.85%
MT	4.64%	2.30%	87.28%	2.96%
NC	7.91%	4.18%	77.91%	2.19%
ND	3.98%	1.74%	84.31%	2.90%
NE	3.94%	1.70%	81.41%	2.46%
NH	3.96%	1.88%	89.07%	5.05%
NJ	6.59%	4.39%	74.74%	2.35%
NM	6.55%	3.70%	74.98%	1.14%
NV	9.44%	7.41%	63.93%	3.43%
NY	7.37%	4.78%	77.55%	4.72%
OH	5.61%	3.16%	86.01%	2.18%
OK	6.11%	3.14%	63.25%	1.42%
OR	7.13%	4.28%	77.19%	4.15%
PA	5.79%	3.15%	86.11%	2.61%
RI	5.28%	2.88%	84.86%	2.78%
SC	7.64%	4.42%	83.43%	1.99%
SD	4.69%	1.86%	76.62%	2.44%
TN	7.18%	4.49%	82.73%	2.39%
TX	7.17%	3.73%	70.96%	1.43%
UT	6.59%	3.86%	80.45%	2.65%
VA	6.80%	4.03%	78.25%	3.26%
VT	4.32%	2.16%	84.69%	3.76%
WA	6.51%	3.49%	76.57%	3.95%
WI	4.59%	2.34%	79.47%	3.07%
WV	7.12%	4.50%	81.56%	2.09%
WY	3.80%	1.71%	82.19%	1.54%

Source: CMS Form 672: F78, F115 - F118

LTC Stats: Nursing Facility Patient Characteristics Report - Research Department - American Health Care Association

Table 16: Medical Condition - Special Care, March 2015

State	Hospice Care	Radiation Therapy	Chemotherapy	Dialysis	IV Therapy (Nutrition or Blood)
US	4.69%	0.10%	0.37%	2.10%	1.41%
AK	0.00%	0.00%	0.32%	1.92%	1.60%
AL	5.60%	0.04%	0.22%	1.82%	0.65%
AR	4.74%	0.02%	0.19%	1.30%	0.52%
AZ	5.03%	0.08%	0.17%	2.93%	4.38%
CA	3.20%	0.09%	0.23%	3.02%	2.34%
CO	5.43%	0.07%	0.29%	1.39%	1.24%
CT	2.57%	0.10%	0.30%	1.58%	1.17%
DC	3.01%	0.08%	0.52%	3.85%	0.48%
DE	6.59%	0.12%	0.21%	2.69%	1.31%
FL	6.04%	0.12%	0.15%	2.12%	1.85%
GA	5.21%	0.09%	0.32%	2.90%	0.96%
HI	5.05%	0.08%	0.33%	2.03%	1.98%
IA	5.46%	0.06%	0.36%	0.99%	0.60%
ID	3.39%	0.18%	0.46%	2.07%	2.04%
IL	4.27%	0.12%	0.33%	2.01%	1.33%
IN	5.23%	0.10%	0.47%	1.91%	1.61%
KS	5.60%	0.28%	0.36%	1.12%	0.74%
KY	2.08%	0.05%	0.29%	1.75%	1.56%
LA	5.43%	0.09%	0.46%	2.42%	0.84%
MA	4.88%	0.12%	0.34%	1.33%	1.06%
MD	2.79%	0.13%	0.28%	3.37%	1.87%
ME	5.72%	0.08%	0.42%	0.96%	1.08%
MI	5.12%	0.14%	0.31%	2.30%	1.62%
MN	4.69%	0.32%	0.75%	1.19%	0.97%
MO	6.95%	0.06%	0.27%	1.54%	0.69%
MS	3.93%	0.03%	0.65%	2.53%	0.63%
MT	2.19%	0.04%	0.26%	1.18%	0.57%
NC	3.79%	0.09%	0.33%	2.39%	1.22%
ND	2.89%	0.04%	0.53%	1.33%	0.57%
NE	5.71%	0.08%	0.46%	1.05%	1.08%
NH	4.06%	0.07%	0.21%	1.02%	1.06%
NJ	3.45%	0.12%	0.38%	2.54%	1.74%
NM	5.14%	0.06%	0.20%	1.53%	0.94%
NV	3.20%	0.10%	0.23%	2.37%	4.56%
NY	1.49%	0.09%	0.72%	2.41%	1.07%
OH	6.55%	0.11%	0.53%	2.22%	1.68%
OK	9.64%	0.06%	0.20%	1.53%	0.63%
OR	4.18%	0.19%	0.18%	2.16%	2.25%
PA	4.57%	0.10%	0.49%	1.80%	1.56%
RI	6.06%	0.06%	0.35%	1.32%	1.21%
SC	6.19%	0.04%	0.27%	2.25%	0.66%
SD	2.93%	0.02%	0.46%	1.02%	0.94%
TN	5.31%	0.06%	0.15%	1.81%	1.44%
TX	7.56%	0.06%	0.20%	2.45%	1.39%
UT	8.12%	0.04%	0.18%	1.89%	2.69%
VA	3.24%	0.08%	0.43%	2.34%	1.41%
VT	1.86%	0.07%	0.22%	1.15%	0.86%
WA	2.70%	0.14%	0.46%	2.08%	1.77%
WI	4.52%	0.09%	0.45%	1.55%	0.91%
WV	3.76%	0.10%	0.49%	1.46%	1.92%
WY	1.15%	0.21%	0.21%	0.85%	1.11%

Source: CMS Form 672: F78, F119 - F123

LTC Stats: Nursing Facility Patient Characteristics Report - Research Department - American Health Care Association

Table 16: Medical Condition - Special Care, March 2015

State	Respiratory Therapy	Tracheostomy Care	Ostomy Care	Suctioning	Injections
US	15.08%	1.31%	2.71%	1.54%	21.91%
AK	13.30%	1.76%	6.73%	3.37%	22.44%
AL	17.00%	0.51%	3.83%	1.04%	22.40%
AR	19.24%	0.39%	3.76%	1.02%	17.64%
AZ	21.12%	2.63%	2.70%	2.71%	26.21%
CA	14.05%	4.15%	3.83%	4.75%	24.92%
CO	29.78%	0.56%	1.94%	0.54%	17.14%
CT	13.60%	0.49%	2.06%	0.64%	18.16%
DC	11.74%	1.82%	3.29%	3.21%	25.03%
DE	13.39%	1.47%	2.22%	2.08%	19.51%
FL	17.61%	0.95%	3.41%	1.27%	24.77%
GA	13.40%	0.78%	3.08%	1.16%	23.25%
HI	9.28%	3.02%	4.94%	3.84%	13.48%
IA	14.28%	0.54%	1.92%	0.56%	16.11%
ID	25.11%	1.15%	2.81%	1.30%	24.89%
IL	13.19%	1.08%	2.36%	1.24%	23.76%
IN	14.57%	0.95%	2.30%	0.97%	21.07%
KS	15.85%	0.47%	1.80%	0.46%	19.17%
KY	19.11%	1.24%	3.50%	1.98%	23.46%
LA	10.58%	1.07%	2.70%	1.16%	22.15%
MA	11.13%	0.72%	1.82%	0.75%	17.27%
MD	13.69%	1.89%	2.70%	2.15%	24.49%
ME	12.82%	0.19%	1.76%	0.28%	18.23%
MI	15.66%	1.18%	2.54%	1.31%	23.29%
MN	13.33%	0.66%	1.85%	0.59%	17.59%
MO	14.33%	0.33%	1.96%	0.37%	20.65%
MS	11.36%	0.83%	3.93%	0.79%	23.77%
MT	20.61%	0.26%	2.12%	0.26%	17.54%
NC	15.11%	0.81%	2.37%	0.91%	24.18%
ND	14.31%	0.28%	2.34%	0.25%	19.10%
NE	16.93%	0.91%	2.11%	1.01%	17.74%
NH	14.54%	0.46%	1.45%	0.46%	17.39%
NJ	14.02%	1.74%	3.44%	1.97%	21.19%
NM	22.89%	0.35%	1.68%	1.64%	18.67%
NV	25.13%	3.72%	4.31%	3.70%	28.29%
NY	12.95%	2.24%	3.14%	2.60%	20.88%
OH	15.69%	1.11%	2.48%	1.21%	24.79%
OK	17.18%	0.88%	2.47%	1.27%	19.99%
OR	14.65%	0.60%	2.82%	0.65%	24.04%
PA	17.12%	1.30%	2.31%	1.47%	21.70%
RI	10.02%	0.37%	2.33%	0.45%	19.89%
SC	12.97%	0.61%	3.48%	0.75%	22.08%
SD	16.29%	0.19%	2.36%	0.22%	17.62%
TN	18.37%	1.15%	2.55%	1.61%	22.28%
TX	12.62%	0.96%	2.52%	1.09%	21.88%
UT	29.31%	1.88%	2.22%	1.75%	23.97%
VA	16.70%	0.86%	2.49%	1.27%	22.56%
VT	14.23%	0.67%	2.35%	0.78%	15.49%
WA	15.52%	1.30%	2.56%	1.51%	23.06%
WI	15.29%	0.69%	1.99%	0.69%	18.38%
WV	16.48%	0.46%	2.39%	0.53%	22.79%
WY	31.57%	0.00%	2.05%	0.00%	16.36%

Source: CMS Form 672: F78, F124 - F128

LTC Stats: Nursing Facility Patient Characteristics Report - Research Department - American Health Care Association

Table 16: Medical Condition - Special Care, March 2015

State	Tube Feeding	Mechanically Altered Diet	Special Rehab	Assistive Eating Device
US	5.28%	32.41%	30.10%	8.51%
AK	7.37%	39.42%	15.71%	8.97%
AL	7.25%	37.21%	26.35%	8.12%
AR	4.41%	33.15%	19.61%	7.62%
AZ	5.21%	30.72%	33.03%	7.05%
CA	10.63%	40.56%	26.61%	5.61%
CO	1.96%	25.85%	28.71%	9.67%
CT	2.66%	35.10%	27.32%	9.03%
DC	10.04%	31.65%	18.68%	2.98%
DE	4.91%	32.88%	31.90%	6.75%
FL	6.50%	34.25%	35.07%	8.73%
GA	6.68%	37.88%	28.40%	7.82%
HI	9.61%	56.03%	20.72%	8.10%
IA	1.72%	24.90%	21.90%	14.24%
ID	3.24%	28.99%	34.94%	13.32%
IL	4.29%	26.05%	28.02%	5.97%
IN	3.64%	27.60%	39.63%	10.36%
KS	2.11%	25.30%	22.27%	10.77%
KY	6.27%	36.20%	31.28%	12.81%
LA	6.84%	28.77%	34.38%	2.85%
MA	2.75%	34.16%	26.37%	12.01%
MD	7.02%	30.76%	30.62%	4.40%
ME	1.30%	35.22%	26.83%	12.40%
MI	5.11%	27.90%	31.92%	12.44%
MN	2.10%	22.11%	23.36%	10.52%
MO	2.80%	25.16%	22.32%	7.50%
MS	9.12%	35.83%	33.78%	4.58%
MT	1.49%	25.49%	21.35%	9.26%
NC	5.52%	38.12%	35.55%	10.32%
ND	2.02%	24.47%	15.42%	18.77%
NE	2.64%	24.51%	26.09%	13.21%
NH	1.43%	32.30%	31.68%	12.61%
NJ	6.48%	34.24%	29.60%	4.50%
NM	3.81%	35.87%	28.12%	9.02%
NV	9.11%	28.25%	33.49%	5.68%
NY	6.37%	33.41%	26.72%	7.23%
OH	4.30%	28.53%	32.42%	10.00%
OK	3.96%	28.47%	16.45%	3.78%
OR	3.46%	30.71%	34.43%	8.54%
PA	4.16%	34.42%	36.65%	13.45%
RI	1.99%	29.90%	27.98%	5.06%
SC	6.27%	39.58%	29.47%	7.10%
SD	1.20%	25.22%	18.89%	10.06%
TN	5.56%	39.41%	32.20%	8.87%
TX	6.10%	34.12%	37.77%	4.46%
UT	3.36%	29.89%	37.23%	8.30%
VA	5.61%	33.29%	31.11%	6.48%
VT	2.01%	38.96%	29.72%	15.49%
WA	4.45%	31.58%	34.71%	11.69%
WI	2.21%	26.44%	28.50%	15.80%
WV	3.50%	37.76%	32.86%	9.11%
WY	1.20%	25.93%	20.08%	11.28%

Source: CMS Form 672: F78, F129 - F132

LTC Stats: Nursing Facility Patient Characteristics Report - Research Department - American Health Care Association

Glossary of Terms for use with CASPER data

Activities of Daily Living (ADL) are activities done during a normal day such as getting in and out of bed, dressing, bathing, eating, and using the bathroom. Patients are considered to be *independent* if they can execute an activity of daily living independent of direct care staff or with only “set up” assistance. Patients needing *assistance* can partially execute the activity of daily living but must have considerable assistance from direct care staff to successfully complete the activity. Patients who are *dependent* for an activity of daily living are not at all capable of executing the activity of daily living.

Advance Directive (Health Care) is a written health care directive prepared by patients in advance of needing to apply its contents which documents how a patient wants medical decisions to be made on their behalf in the event they become disabled and are unable to make their own health related decisions. A health care advance directive may include a Living Will and a Durable Power of Attorney for health care.

Certified Beds This measure represents the total number of certified beds in the nursing home. Some nursing homes can have a combination of Medicare, Medicaid, and/or private pay beds. Certified beds refer to those beds certified for use under the Medicare and/or Medicaid programs.

Certified Nursing Assistants (CNAs) provide care on a twenty-four hour basis. They work under the direction of a licensed nurse to assist patients with activities of daily living, i.e., eating, grooming, hygiene, dressing, transferring, and toileting. All full-time certified nursing assistants (CNAs) must have completed a competency evaluation program or nurse assistant training within 4 months of their permanent employment. They must also pursue continuing education each year.

Hospital-based - The nursing home is affiliated with a hospital.

Medicare is the federal health insurance program for: people 65 years of age or older, certain younger people with disabilities, and people with End-Stage Renal Disease (permanent kidney failure with dialysis or a transplant, sometimes called ESRD). Medicare pays for some nursing home care in specific situations and for no more than 100 days for each benefit period. A benefit period begins the day you go to a skilled nursing facility. The benefit period ends when you have not received skilled nursing care for 60 days in a row.

Medicaid is the joint federal and state program that helps with medical costs for some people with low incomes and limited resources. Medicaid programs vary from state to state, but most health care costs are covered if you qualify for both Medicare and Medicaid. Medicaid pays for long term care for people with low incomes and resources.



Multifacility - Multi-nursing home chains have two or more homes under one ownership or operation

Occupancy This measure indicates the percentage of certified beds occupied by patients at the time of the inspection. It is obtained by taking the number of patients occupying certified beds at the time of the inspection divided by the total number of certified beds in the nursing home.

Ownership - Nursing homes can be run by private for-profit corporations, non-profit corporations or government entities.

Patients in Certified Beds This number tells you how many patients in certified beds were living in the nursing home at the time of the inspection

Primary Payor is an insurance policy, plan, or program that pays first on a claim for medical care. This could be Medicare, Medicaid or other health insurance.

Registered Nurses and Licensed Practical and Vocational Nurses - Registered nurses (RNs) have between 2 and 6 years of education. Licensed practical and vocational nurses (LPNs/LVNs) generally have 1 year of training. By law, RNs must assess residents' needs. RNs and LPNs/LVNs work together to plan care, implement care and treatment, and evaluate residents' outcomes. Nurses must be licensed in the state and are on site to provide care to residents twenty-four hours per day, seven days a week.

Restraint is any physical or chemical way to stop a patient from being free to move. These restraints are used to prevent patient injury and are not used for treating medical symptoms.



1201 L Street, NW
Washington, DC, 20005
T: (202) 842-4444
Email: research@ahca.org

Table 2: Ten Most Frequently Cited Deficiencies in the Nation, March 2015

Rank	Number of Facilities Cited	Percent of Facilities Cited	Tag	Tag Description
1	5,891	37.7%	F441	Investigates, controls/prevents infections.
2	5,512	35.2%	F371	Store, prepare, distribute, and serve food.
3	4,634	29.6%	F323	Accident hazards.
4	3,840	24.6%	F309	Each resident must receive care for highest well-being.
5	3,469	22.2%	F329	Unnecessary drug: In excessive dose.
6	3,259	20.8%	F431	Labeling of drugs and biologicals.
7	3,027	19.4%	F279	Facility must develop a comprehensive care plan with objectives/timetables.
8	2,364	15.1%	F241	Dignity: Facility must allow residents to maintain his/her self-esteem and self-worth.
9	2,273	14.5%	F514	Criteria for clinical records.
10	2,130	13.6%	F282	Services must be provided by qualified persons.

LTC Stats: Nursing Facility Standard Health Survey Report
Research Department - American Health Care Association

Table 4: Percent of Facilities by State Cited for Ten Most Frequent Deficiencies, March 2015

State	Tag 1	Tag 2	Tag 3	Tag 4	Tag 5	Tag 6	Tag 7	Tag 8	Tag 9	Tag 10
	F441	F371	F323	F309	F329	F431	F279	F241	F514	F282
US	37.7%	35.2%	29.6%	24.6%	22.2%	20.8%	19.4%	15.1%	14.5%	13.6%
AK	77.8%	72.2%	55.6%	55.6%	16.7%	22.2%	44.4%	83.3%	33.3%	50.0%
AL	54.0%	51.3%	10.2%	2.7%	3.1%	11.1%	3.5%	15.5%	10.2%	16.8%
AR	37.6%	42.8%	41.0%	25.3%	7.4%	3.1%	2.2%	16.2%	1.7%	25.3%
AZ	50.7%	24.0%	24.7%	25.3%	37.7%	41.1%	16.4%	20.5%	21.9%	11.6%
CA	54.9%	55.1%	39.9%	38.5%	35.5%	33.9%	31.3%	21.9%	29.3%	5.3%
CO	42.5%	59.3%	47.7%	40.7%	36.9%	52.3%	22.0%	22.9%	12.6%	3.7%
CT	33.2%	35.8%	50.7%	48.0%	23.1%	21.8%	26.6%	28.8%	18.3%	20.5%
DC	57.9%	89.5%	63.2%	73.7%	42.1%	57.9%	47.4%	47.4%	89.5%	15.8%
DE	41.3%	58.7%	34.8%	54.3%	26.1%	28.3%	52.2%	32.6%	32.6%	0.00%
FL	36.0%	32.4%	14.0%	18.8%	17.2%	27.6%	12.8%	17.2%	9.4%	22.8%
GA	25.3%	25.3%	15.2%	25.8%	3.1%	10.1%	8.7%	5.1%	3.1%	21.6%
HI	50.0%	63.0%	37.0%	30.4%	28.3%	17.4%	56.5%	52.2%	26.1%	6.5%
IA	28.4%	34.8%	38.6%	13.5%	27.5%	7.0%	4.3%	8.1%	4.1%	6.1%
ID	52.6%	41.0%	70.5%	62.8%	59.0%	46.2%	16.7%	38.5%	44.9%	0.00%
IL	51.4%	30.4%	41.0%	20.9%	22.3%	15.8%	8.4%	11.8%	2.4%	5.4%
IN	40.3%	39.2%	35.8%	22.5%	31.4%	24.8%	26.3%	18.4%	10.8%	37.1%
KS	57.4%	60.0%	64.6%	35.9%	49.6%	31.3%	41.4%	22.0%	2.3%	1.7%
KY	38.9%	27.1%	27.1%	10.1%	5.2%	16.3%	12.5%	12.2%	10.4%	27.8%
LA	31.8%	31.8%	24.3%	4.6%	19.6%	18.9%	17.1%	17.9%	11.1%	30.7%
MA	14.5%	10.9%	23.2%	6.3%	7.0%	9.2%	9.2%	4.3%	17.6%	29.5%
MD	27.2%	47.8%	36.4%	45.2%	36.0%	41.7%	42.1%	27.6%	39.9%	9.6%
ME	7.8%	33.0%	30.1%	12.6%	10.7%	33.0%	12.6%	9.7%	4.9%	17.5%
MI	45.4%	38.7%	36.9%	27.6%	27.2%	20.5%	13.8%	12.0%	9.7%	4.1%
MN	39.2%	19.8%	23.0%	27.2%	34.1%	28.0%	26.7%	16.4%	1.6%	39.2%
MO	43.8%	37.3%	30.9%	14.5%	14.5%	20.1%	15.2%	10.5%	4.9%	0.2%
MS	30.2%	23.4%	12.7%	5.4%	7.8%	19.0%	18.5%	5.9%	28.3%	26.3%
MT	55.4%	36.1%	53.0%	16.9%	21.7%	21.7%	48.2%	30.1%	31.3%	6.0%
NC	12.6%	25.2%	10.9%	11.6%	9.5%	20.4%	8.3%	7.6%	3.1%	2.1%
ND	50.6%	30.9%	63.0%	49.4%	23.5%	14.8%	1.2%	21.0%	3.7%	0.00%
NE	38.8%	32.4%	34.7%	27.4%	26.9%	14.6%	24.2%	15.5%	4.6%	5.9%
NH	15.8%	13.2%	5.3%	3.9%	3.9%	15.8%	19.7%	2.6%	17.1%	2.6%
NJ	21.5%	30.6%	30.3%	19.0%	14.3%	17.1%	12.9%	9.4%	7.4%	9.6%
NM	32.4%	21.1%	23.9%	23.9%	38.0%	22.5%	23.9%	25.4%	21.1%	28.2%
NV	71.7%	49.1%	56.6%	56.6%	50.9%	45.3%	13.2%	32.1%	20.8%	0.00%
NY	25.8%	27.0%	20.2%	17.6%	12.7%	12.9%	19.6%	11.9%	14.0%	19.2%
OH	22.5%	22.5%	22.3%	20.8%	22.0%	12.1%	13.6%	11.3%	7.8%	2.4%
OK	49.4%	43.2%	34.4%	39.0%	40.9%	23.1%	42.5%	19.5%	39.0%	16.9%
OR	25.4%	21.0%	20.3%	36.2%	31.9%	21.0%	15.2%	8.7%	10.1%	1.4%
PA	31.1%	29.2%	23.6%	43.3%	18.5%	18.8%	18.6%	14.8%	23.4%	4.7%
RI	9.5%	13.1%	9.5%	0.00%	3.6%	3.6%	0.00%	3.6%	4.8%	7.1%
SC	18.6%	35.1%	28.2%	35.6%	17.6%	16.0%	12.8%	14.9%	18.6%	9.0%
SD	68.5%	36.0%	44.1%	16.2%	11.7%	18.0%	10.8%	15.3%	18.0%	0.9%
TN	42.9%	43.2%	27.0%	13.7%	7.1%	28.9%	15.2%	20.5%	18.0%	15.8%
TX	44.4%	39.1%	17.6%	15.6%	12.9%	19.8%	23.1%	12.0%	17.6%	17.7%
UT	37.4%	36.4%	35.4%	19.2%	32.3%	44.4%	18.2%	17.2%	10.1%	7.1%
VA	34.5%	32.4%	35.9%	54.4%	31.4%	19.9%	19.2%	9.8%	44.9%	1.7%
VT	21.6%	24.3%	10.8%	8.1%	16.2%	16.2%	21.6%	16.2%	13.5%	40.5%
WA	34.4%	30.3%	23.1%	37.1%	39.8%	25.8%	38.0%	23.5%	14.5%	16.3%
WI	48.3%	37.8%	38.6%	23.9%	34.2%	3.6%	21.6%	12.3%	8.7%	27.2%
WV	44.1%	50.4%	38.6%	29.1%	31.5%	31.5%	43.3%	26.8%	30.7%	33.1%
WY	61.5%	69.2%	46.2%	41.0%	17.9%	20.5%	30.8%	38.5%	23.1%	35.9%

Table 4: Nursing Facility State and Median Occupancy Rate for Certified Beds, March 2015

State	Facilities	Patients	Beds	State Occupancy*	Median Facility Occupancy
US	15,632	1,368,351	1,662,757	82.3%	85.8%
AK	18	624	693	90.0%	93.7%
AL	226	22,772	26,385	86.3%	88.6%
AR	229	17,719	24,533	72.2%	75.0%
AZ	146	11,487	16,454	69.8%	72.9%
CA	1,216	102,617	119,210	86.1%	88.9%
CO	214	16,355	20,451	80.0%	82.7%
CT	229	24,176	27,652	87.4%	90.0%
DC	19	2,521	2,766	91.1%	91.1%
DE	46	4,279	4,846	88.3%	90.7%
FL	688	73,492	83,061	88.5%	90.0%
GA	356	33,930	39,935	85.0%	89.2%
HI	46	3,643	4,043	90.1%	91.4%
IA	443	24,908	31,241	79.7%	81.1%
ID	78	3,918	5,951	65.8%	70.5%
IL	761	72,523	93,813	77.3%	78.2%
IN	528	39,043	50,964	76.6%	73.5%
KS	345	18,405	22,795	80.7%	77.8%
KY	288	23,319	26,676	87.4%	90.0%
LA	280	25,859	34,473	75.0%	75.3%
MA	414	41,055	47,271	86.9%	90.0%
MD	228	24,487	27,751	88.2%	89.8%
ME	103	6,176	6,864	90.0%	92.9%
MI	434	39,553	46,412	85.2%	87.5%
MN	376	26,386	29,538	89.3%	90.8%
MO	512	38,329	52,984	72.3%	72.3%
MS	205	16,124	18,473	87.3%	91.6%
MT	83	4,566	6,732	67.8%	69.6%
NC	421	36,887	44,196	83.5%	86.7%
ND	81	5,648	6,105	92.5%	95.0%
NE	219	12,038	15,799	76.2%	77.8%
NH	76	6,773	7,525	90.0%	91.1%
NJ	363	45,234	52,253	86.6%	89.3%
NM	71	5,431	6,869	79.1%	82.1%
NV	53	4,807	6,048	79.5%	85.0%
NY	629	105,167	116,739	90.1%	93.8%
OH	949	76,037	90,199	84.3%	87.0%
OK	308	18,958	28,484	66.6%	67.9%
OR	138	7,366	12,241	60.2%	59.7%
PA	697	79,383	87,778	90.4%	92.5%
RI	84	8,026	8,720	92.0%	92.9%
SC	188	16,772	19,276	87.0%	88.6%
SD	111	6,352	6,939	91.5%	94.0%
TN	322	28,961	36,928	78.4%	81.3%
TX	1,213	93,201	131,967	70.6%	70.4%
UT	99	5,541	8,527	65.0%	70.0%
VA	287	28,445	32,179	88.4%	89.6%
VT	37	2,685	3,174	84.6%	90.9%
WA	221	17,118	21,171	80.9%	83.3%
WI	388	27,365	33,828	80.9%	84.3%
WV	127	9,549	10,880	87.8%	91.7%
WY	39	2,341	2,965	79.0%	80.6%

Source: CMS Form 671:L18, L37, L38, L39 and Form 672:F78. *State occupancy is calculated by dividing the sum of patients occupying certified beds by the sum of all certified beds in the state. CASPER data only reflects patients who occupy a certified bed. Occupancy rate of 0% and greater than 100% were eliminated from this analysis.

Table 8: Average Direct Care Staff Hours per Patient Day by State, March 2015

State	Total Direct Care Staff HPPD	RN HPPD	LPN HPPD	Aide HPPD*
US	3.75	0.48	0.83	2.43
AK	6.09	1.42	0.68	3.99
AL	4.12	0.41	1.01	2.69
AR	4.01	0.17	0.96	2.87
AZ	4.10	0.58	0.96	2.56
CA	4.15	0.58	0.93	2.64
CO	3.79	0.69	0.71	2.39
CT	3.79	0.57	0.78	2.44
DC	4.62	0.75	0.96	2.91
DE	4.13	0.70	0.96	2.47
FL	4.14	0.42	0.93	2.79
GA	3.47	0.24	1.04	2.20
HI	4.14	0.92	0.45	2.76
IA	3.53	0.49	0.63	2.42
ID	4.43	0.68	0.78	2.97
IL	3.25	0.58	0.57	2.10
IN	3.79	0.49	0.98	2.32
KS	3.77	0.46	0.64	2.67
KY	3.84	0.45	0.94	2.45
LA	3.34	0.14	0.96	2.24
MA	3.73	0.57	0.81	2.36
MD	3.91	0.62	0.90	2.39
ME	4.24	0.81	0.44	3.00
MI	3.91	0.55	0.80	2.56
MN	3.75	0.57	0.75	2.44
MO	3.59	0.30	0.75	2.54
MS	3.80	0.40	1.00	2.40
MT	3.77	0.68	0.50	2.60
NC	3.74	0.44	0.86	2.44
ND	4.16	0.50	0.65	3.01
NE	3.87	0.53	0.75	2.59
NH	3.93	0.71	0.63	2.59
NJ	3.66	0.63	0.76	2.27
NM	3.30	0.45	0.50	2.35
NV	3.96	0.67	0.89	2.39
NY	3.68	0.50	0.81	2.36
OH	3.70	0.48	0.90	2.33
OK	3.58	0.19	0.85	2.54
OR	4.37	0.57	0.66	3.13
PA	3.62	0.56	0.83	2.23
RI	3.56	0.67	0.33	2.55
SC	3.77	0.41	0.93	2.43
SD	3.40	0.59	0.35	2.45
TN	3.61	0.33	1.02	2.25
TX	3.47	0.24	0.93	2.30
UT	4.05	0.96	0.44	2.65
VA	3.67	0.38	1.03	2.26
VT	3.97	0.65	0.78	2.54
WA	4.08	0.77	0.65	2.66
WI	3.85	0.71	0.55	2.59
WV	3.42	0.44	0.90	2.09
WY	3.46	0.71	0.42	2.33

Note: Staff positions are measured in full-time equivalents, which is based on a 35-hour workweek. *Aide staff is equal to the sum of certified nurse aides+nurse aides in training+medication aides. Due to invalid or incomplete data, some facilities were eliminated from the staffing analysis. Source: CMS Form 671:F41-F45, current surveys.