

Origin of Quality Measures Data

March 2014

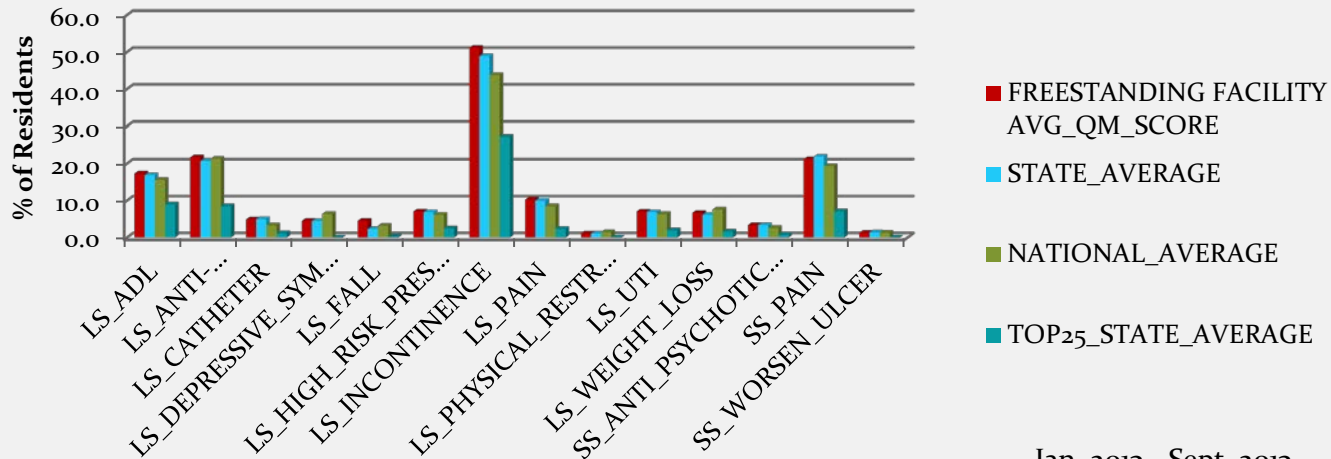
The nursing facility QMs are derived from the Minimum Data Set (MDS 3.0) and reported at the facility level. Two sets of QMs are used in the calculation of the state average: the CMS three-quarter QM score (as reported on Nursing Home Compare) and the one-quarter QM score. Subject to a number of exclusions and resident-level adjustments, the score for each facility-level QM is computed as the ratio of the sum of eligible residents in the facility with a particular condition to the sum of eligible residents in the facility over the respective time period

This report features AHCA Analysis of CMS Nursing Home Compare Data, 3 Quarter Average (Jan. 2013 –Sept. 2013) data.

American Health Care Association - Research Department, March 2014

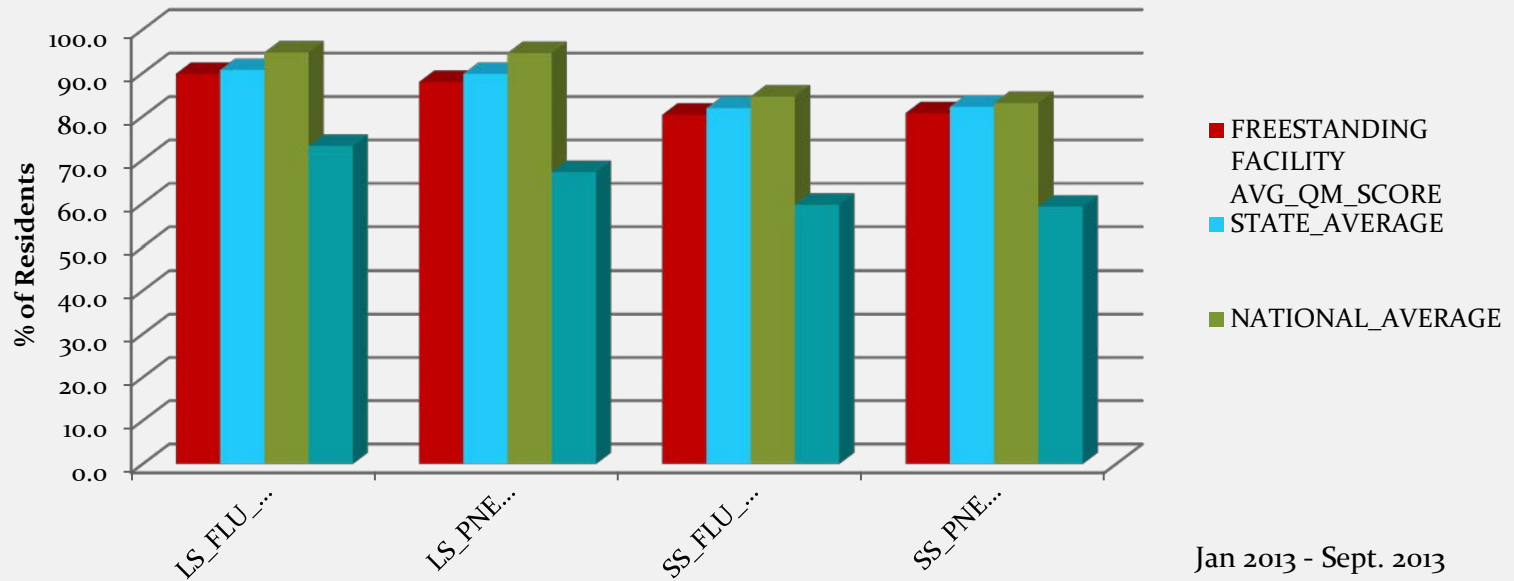


Freestanding Facilities - Quality Measure Comparison



| | | FREESTANDING FACILITY AVG_QM_SCORE | STATE_AVERAGE | NATIONAL_AVERAGE | TOP25_STATE_AVERAGE |
|-----------------------|---------|---------------------------------------|---------------|------------------|---------------------|
| LS_ADL | 2013_Q3 | 17.3 | 16.9 | 15.6 | 9 |
| LS_ANTI-PSYCHOTIC-MED | 2013_Q3 | 21.7 | 20.7 | 21.3 | 8.5 |
| LS_CATHETER | 2013_Q3 | 4.9 | 5 | 3.3 | 1.2 |
| LS_DEPRESSIVE_SYMPTOM | 2013_Q3 | 4.5 | 4.5 | 6.4 | 0 |
| LS_FALL | 2013_Q3 | 4.5 | 2.3 | 3.2 | 0.2 |
| LS_HIGH_RISK_PRESSURE | 2013_Q3 | 7.1 | 6.9 | 6.2 | 2.5 |
| LS_INCONTINENCE | 2013_Q3 | 51.1 | 48.9 | 43.8 | 27.3 |
| LS_PAIN | 2013_Q3 | 10.3 | 10 | 8.5 | 2.4 |
| LS_PHYSICAL_RESTRAINT | 2013_Q3 | 1.1 | 1.1 | 1.5 | 0 |
| LS_UTI | 2013_Q3 | 7.1 | 6.9 | 6.4 | 2 |
| LS_WEIGHT_LOSS | 2013_Q3 | 6.7 | 6.2 | 7.6 | 1.6 |
| SS_ANTI_PSYCHOTIC_MED | 2013_Q3 | 3.4 | 3.4 | 2.6 | 0.8 |
| SS_PAIN | 2013_Q3 | 21.2 | 21.9 | 19.3 | 7.1 |
| SS_WORSEN_ULCER | 2013_Q3 | 1.3 | 1.4 | 1.3 | 0 |

Freestanding Facilities - Quality Measure Comparison



| | | FREESTANDING FACILITY AVG_QM_SCORE | STATE_AVERAGE | NATIONAL_AVERAGE | TOP25_STATE_AVERAGE |
|-----------------|---------|---------------------------------------|---------------|------------------|---------------------|
| LS_FLU_VACCINE | 2013_Q3 | 89.8 | 90.7 | 94.7 | 73.2 |
| LS_PNEU_VACCINE | 2013_Q3 | 87.9 | 89.8 | 94.6 | 67.2 |
| SS_FLU_VACCINE | 2013_Q3 | 80.4 | 81.9 | 84.6 | 59.7 |
| SS_PNEU_VACCINE | 2013_Q3 | 80.8 | 82.2 | 83.1 | 59.2 |

| FREESTANDING FACILITY AVERAGE | | | | | | | | | | | |
|-------------------------------|---------|---------|----------|--|---------|---------|----------|--|---------|---------|----------|
| | 2012 Q4 | 2013 Q1 | % Change | | 2013 Q1 | 2013 Q2 | % Change | | 2013 Q2 | 2013 Q3 | |
| LS_ADL | 17.1 | 17.5 | ↓ 2.5% | | 17.5 | 17.5 | ↓ 0.0% | | 17.5 | 17.3 | ↑ -1.0% |
| LS_ANTI-PSYCHOTIC MEDS | 22.7 | 20.9 | ↑ -7.9% | | 20.9 | 21.9 | ↓ 4.6% | | 21.9 | 21.7 | ↑ -0.8% |
| LS_CATHETER | 6.0 | 6.1 | ↓ 2.3% | | 6.1 | 5.7 | ↑ -5.8% | | 5.7 | 4.9 | ↑ -14.4% |
| LS_DEPRESSIVE SYMPTOMS | 5.1 | 4.8 | ↑ -5.2% | | 4.8 | 4.7 | ↑ -2.9% | | 4.7 | 4.5 | ↑ -3.0% |
| LS_FALLS | 2.8 | 2.5 | ↑ -11.4% | | 2.5 | 2.4 | ↑ -2.6% | | 2.4 | 4.5 | ↓ 85.7% |
| LS_HIGH PRESSURE ULCER | 8.0 | 7.6 | ↑ -5.0% | | 7.6 | 7.4 | ↑ -2.3% | | 7.4 | 7.1 | ↑ -4.7% |
| LS_INCONTINENCE | 49.5 | 50.9 | ↓ 2.9% | | 50.9 | 52.2 | ↓ 2.6% | | 52.2 | 51.1 | ↑ -2.0% |
| LS_PAIN | 10.5 | 10.2 | ↑ -3.3% | | 10.2 | 10.5 | ↓ 2.9% | | 10.5 | 10.3 | ↑ -2.2% |
| LS_PHYSICAL RESTRAINT | 1.4 | 1.4 | ↓ 3.1% | | 1.4 | 1.2 | ↑ -11.5% | | 1.2 | 1.1 | ↑ -9.1% |
| LS_UTI | 7.2 | 7.1 | ↑ -1.9% | | 7.1 | 7.1 | ↓ 0.5% | | 7.1 | 7.1 | ↑ -1.2% |
| LS_WEIGHT_LOSS | 7.1 | 6.8 | ↑ -4.2% | | 6.8 | 7.0 | ↓ 2.5% | | 7.0 | 6.7 | ↑ -4.1% |
| SS_ANTI-PSYCHOTIC MEDS | 3.9 | 3.9 | ↓ 0.1% | | 3.9 | 3.8 | ↑ -3.2% | | 3.8 | 3.4 | ↑ -10.2% |
| SS_PAIN | 24.1 | 23.7 | ↑ -1.9% | | 23.7 | 22.7 | ↑ -4.4% | | 22.7 | 21.2 | ↑ -6.5% |
| SS_WORSENING_ULCER | 1.1 | 1.2 | ↓ 11.3% | | 1.2 | 1.3 | ↓ 6.8% | | 1.3 | 1.3 | ↓ 1.9% |
| LS_FLU VACCINE | 82.3 | 83.6 | ↑ 1.5% | | 83.6 | 86.3 | ↑ 3.3% | | 86.3 | 89.8 | ↓ 4.0% |
| LS_PNEUMONA VACCINE | 90.0 | 86.8 | ↓ -3.5% | | 86.8 | 86.7 | ↓ -0.2% | | 86.7 | 87.9 | ↓ 1.5% |
| SS_FLU VACCINE | 77.1 | 86.8 | ↑ 12.6% | | 86.8 | 79.6 | ↓ -8.4% | | 79.6 | 80.4 | ↓ 1.1% |
| SS_PNEUMONA VACCINE | 75.5 | 77.3 | ↑ 2.4% | | 77.3 | 78.9 | ↑ 2.0% | | 78.9 | 80.8 | ↓ 2.4% |

Research Department American Health Care Association
 Updated with March 2014 Data

| Comparing Nevada data to states with similar # beds, HPPDs & ADL Dependence Scores | | | | | | | | | | | | | | | | | | |
|--|------------------|--------------|------|----------------------------|-----------|------------|-------------|------------|------------------------------|----------------------|----------------------|----------------------|----------------------|----------------------|----------------------|----------------------|----------------------|----------------------|
| ID | # Certified Beds | % Occu-pancy | HPPD | ↑ Behavioral Acuity Levels | | | | Ave # Tags | National Top 10 Deficiencies | | | | | | | | | |
| | | | | % Psycho-active Meds | % Psyc DX | % Behavior | % Demen-tia | | 1 F441 | 2 F371 | 3 F323 | 4 F309 | 5 F329 | 6 F279 | 7 F431 | 8 F241 | 9 F514 | 10 F281 |
| US | 1,492,387 | 87.5 | 3.71 | 64.25 | 73.86 | 23.66 | 47.61 | 5.7↓ | 37.2 | 34.9 | 29.7 | 24.5 | 23.7 | 21.5 | 19.6 | 16.4 | 14.8 | 13.9 |
| NV | 5979 | 84.1 | 3.63 | 61.34 | 65.69 | 24.78 | 35.95 | 10.9↓ | 74.5↓ | 62.7↓ | 39.2↑ | 66.7↓ | 35.3↑ | 25.5↓ | 56.9↑ | 31.4↓ | 56.9↓ | 47.1↑ |
| ID | 5930 | 76 | 4.39 | 69.16 | 80.17 | 29.82 | 41.28 | 10↓ | 51.3 | 33.3 | 46.2 | 61.5 | 57.7 | 12.8 | 39.7 | 46.2 | 38.5 | 25.6 |
| ND | 6138 | 92.0 | 4.09 | 65.21 | 87.65 | 26.23 | 50.53 | 5↑ | 28.4↑ | 22.2↓ | 45.7↓ | 37.0↑ | 18.5↓ | 1.2↑ | 22.2↑ | 14.8↑ | 3.7↓ | 25.9↓ |
| NM | 6716 | 82.7 | 3.33 | 63.40 | 67.14 | 27.39 | 45.85 | 2↓ | 11.3↓ | 2.8↓ | 8.5↓ | 5.6↓ | 15.5↓ | 14.1↓ | 8.5↑ | 2.8↓ | 5.6↓ | 0.00↓ |
| VT | 3199 | 85.2 | 4.07 | 62.99 | 89.92 | 30.57 | 50.72 | 3.6↓ | 10.5↓ | 18.4↓ | 13.2↑ | 10.5↓ | 21.1↓ | 21.1↓ | 10.5↓ | 2.6↓ | 13.2↑ | 34.2↓ |
| NEVADA TOP 10 DEFICIENCIES | | | | | | | | | F441 74.5 | F309 66.7 | F371 62.7 | F431 56.9 | F514 56.9 | F281 47.1 | F323 39.2 | F329 35.3 | F241 31.4 | F253 29.4 |

| Nevada Top 10 for March 2014 | | | | |
|------------------------------|--------------|------------------------------|----------------------------------|---|
| | <i>F Tag</i> | <i>% US Facilities Cited</i> | <i>% Nevada Facilities Cited</i> | <i>Examples of activity or system changes that can be adopted to avoid survey findings cited on 2567s</i> |
| 1 | F441 | 36.8 | 74.5 | Infection Control: Investigates, controls/prevents infections. |
| 2 | F309 | 24.2 | 66.7 | Highest Well-being: Each resident must receive care for highest well-being. |
| 3 | F371 | 35.5 | 62.7 | Dietary: Store, prepare, distribute, and serve food. |
| 4 | F431 | 20.0 | 56.9 | Labeling: Labeling of drugs and biologicals. |
| 5 | F514 | 14.9 | 56.9 | Clinical Records: Criteria for clinical records. |
| 6 | F281 | 13.9 | 47.1 | Professional Standards of Practice: Services must meet professional standards of quality. |
| 7 | F323 | 29.7 | 39.2 | Accidents: Accident hazards. |
| 8 | F329 | 24.1 | 35.3 | Unnecessary drug: In excessive dose. |
| 9 | F241 | 16.3 | 21.4 | Dignity: Facility must allow residents to maintain his/her self-esteem and self-worth. |
| 10 | F253 | no data | 29.4 | Housekeeping and maintenance services. |