



# 2015 Nevada County Health Rankings

Amberlee Baxa, MPH

YRBS Program Coordinator

Nevada Division of Public and Behavioral Health



# County Health Rankings & Roadmaps

- Collaboration between the Robert Wood Johnson Foundation and University of Wisconsin Population Health Institute
- Rankings influence how healthy residents are and how long they will live.
- Roadmaps help select strategies that work and make changes that will impact health.



# County Health Rankings

Health  
Outcomes

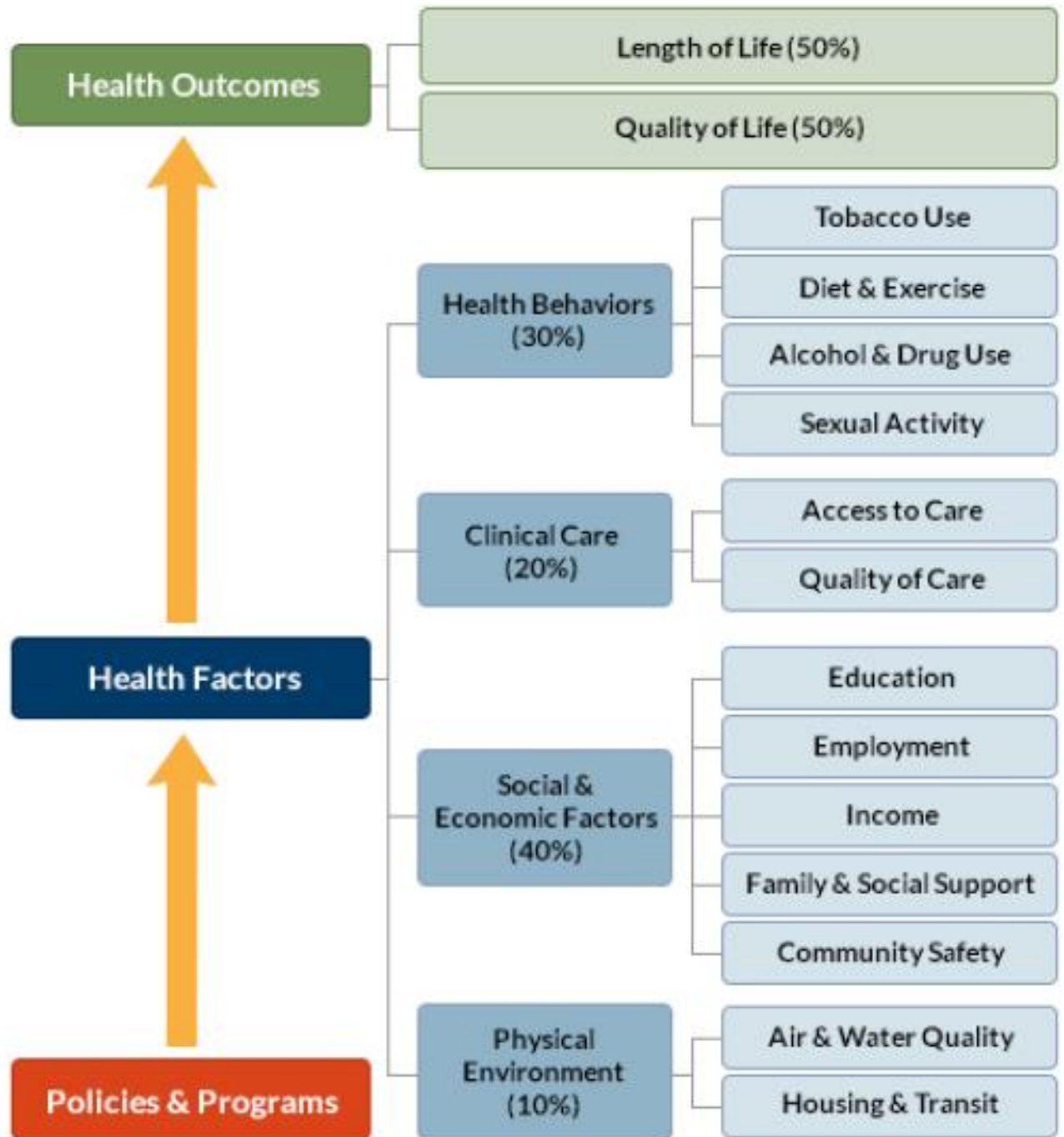
Today's  
Health

Health  
Factors

Tomorrow's  
Health



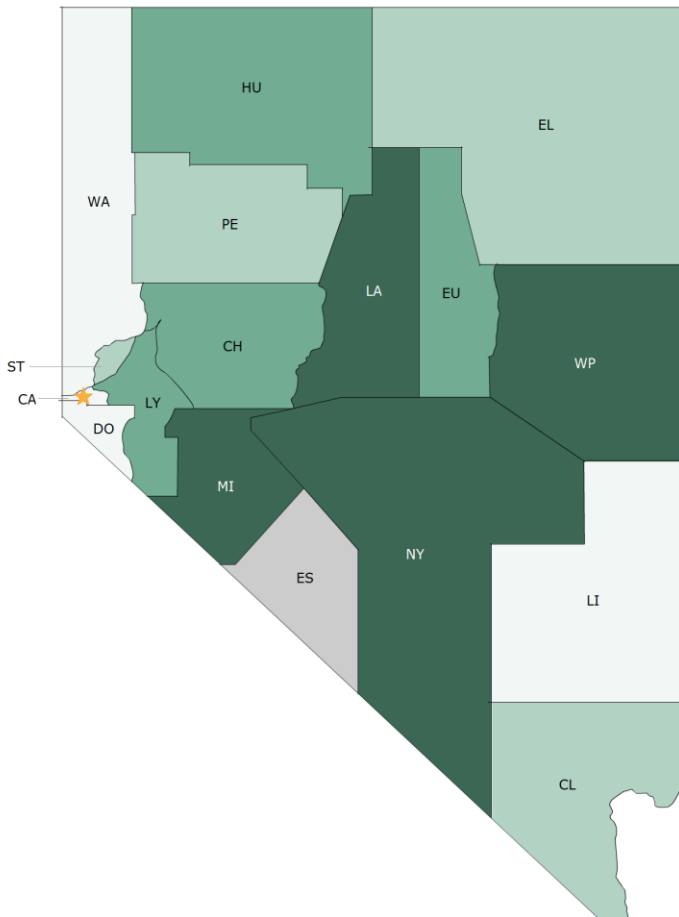
# Measures of the County Health Rankings





# Nevada Counties Rank: Health Outcomes

2015 Health Outcomes - Nevada



Rank 1-4   Rank 5-8   Rank 9-12   Rank 13-16   Not Ranked

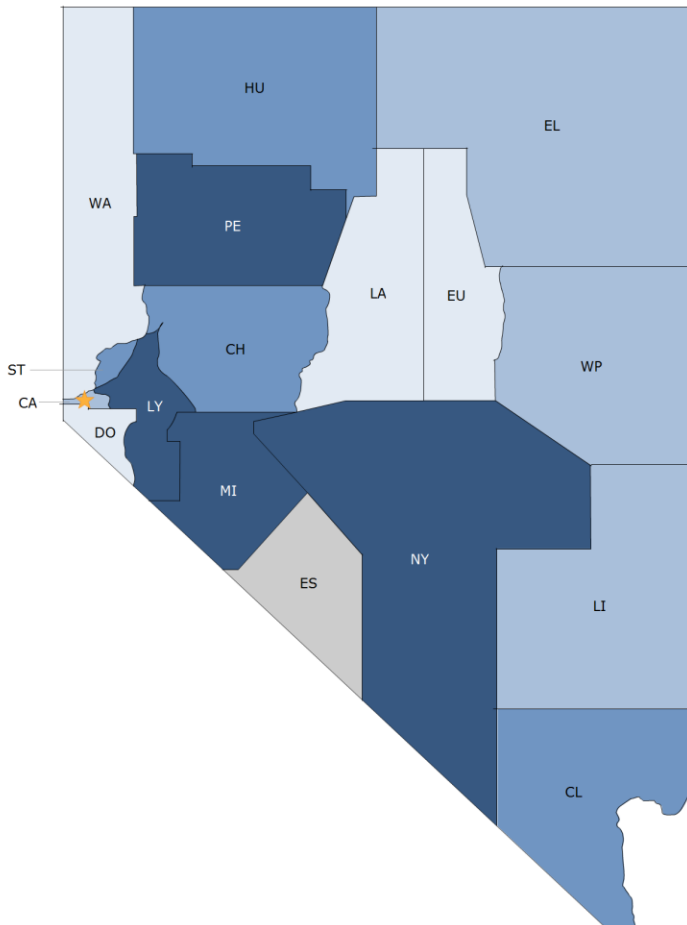
County	Rank
Carson City	4
Churchill	10
Clark	6
Douglas	2
Elko	5
Esmeralda	NR
Eureka	9
Humboldt	12
Lander	13
<b>Lincoln</b>	<b>1</b>

County	Rank
Lyon	11
Mineral	15
<b>Nye</b>	<b>16</b>
Pershing	8
Storey	7
Washoe	3
White Pine	14



# Nevada Counties Rank: Health Factors

2015 Health Factors - Nevada



Rank 1-4   Rank 5-8   Rank 9-12   Rank 13-16   Not Ranked

County	Rank
Carson City	7
Churchill	11
Clark	12
<b>Douglas</b>	<b>1</b>
Elko	6
Esmeralda	NR
Eureka	3
Humboldt	10
Lander	2
Lincoln	8

County	Rank
Lyon	13
<b>Mineral</b>	<b>16</b>
Nye	15
Pershing	14
Storey	9
Washoe	4
White Pine	5



# Health Outcomes

Measure	Nevada	United States Median
<b>Length of Life</b>		
Premature death (per 100,000 population)	7065	7681
<b>Quality of Life</b>		
Poor or fair health	17%	17%
Poor or physical health days	3.7	3.7
Poor mental health days	3.7	3.5
Low birthweight	8.2%	8



# Health Factors

Measure	Nevada	United States Median
<b>Health Behaviors</b>		
Adult smoking	21%	21%
Adult obesity	25%	31%
Food environment index, (0-10)	7.4	7.3
Physical inactivity	21%	27%
Access to exercise opportunities	87%	65%
Excessive drinking	18%	16%
Alcohol-impaired driving deaths	33%	31%





# Network of Care



## Nevada



Seniors & People with Disabilities

Mental Health / Behavioral Health

Kids

Children & Families

Developmental Disabilities

Domestic Violence

**Public Health**

Prisoner Reentry/Corrections

Service Members, Veterans & Their Families

Foster Care

211/Resource Book

[Learn More](#)

[Watch A Demo](#)

[Schedule a Demo](#)

[See What's Inside](#)

Select a state and region below:

Nevada

Select a Region (18)



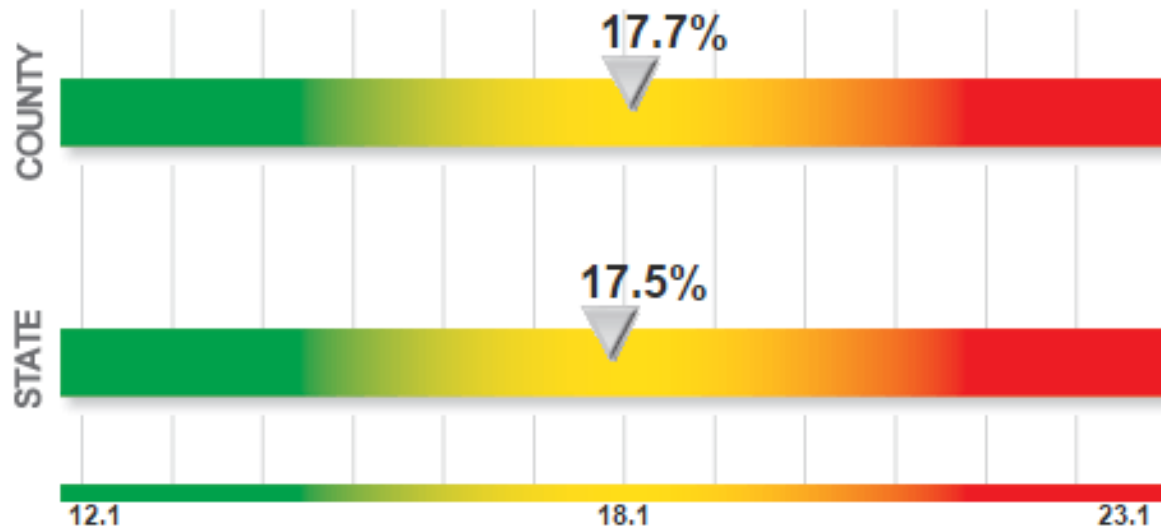
[Network of Care - Nevada](#)



# Network of Care Example: Carson City

## Fair Or Poor Health: Adults (Percent) Nevada - Carson City

Measurement Period: 2006-2012





# Network of Care Example: Carson City

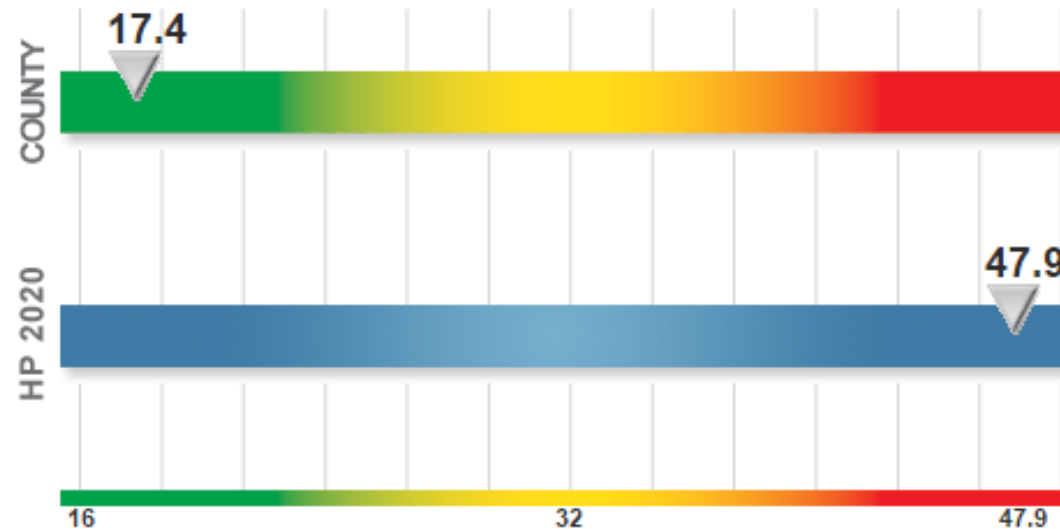
## Adults Who Are Physically Inactive (CDC)

Shows the percentage of adults (aged 20+) who are physically inactive. A person is considered physically inactive if during the past month, other than a regular job, he or she did not participate in any physical activities.

**Measurement Period:** 2012

**Value:** 17.4

**HP 2020 Target:** Healthy People 2020 target: Increase the proportion of adults who engage in aerobic physical activity of at least moderate intensity for at least 150 minutes/week, or 75 minutes/week of vigorous intensity, or an equivalent combination to 47.9%





# Summary

- Where we live matters to our health
- Rankings highlight considerable disparities in health based on where we live
- Health is more than health care – many factors influence health beyond clinical care