



**Steve Sisolak**  
*Governor*



**Richard Whitley**  
*Director*

State of Nevada  
Department of Health and Human Services

---

# Seclusion and Restraint

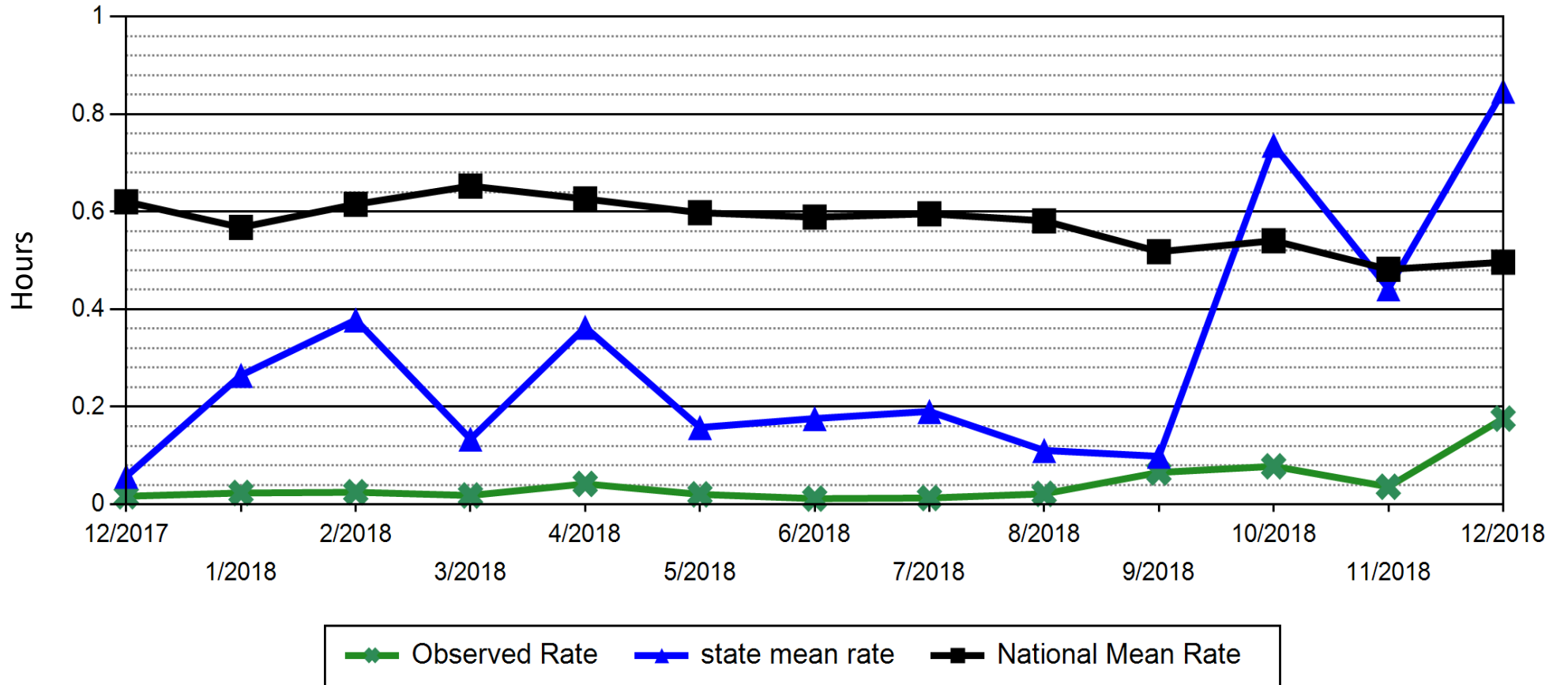
Division of Public and Behavioral Health: Clinical Services  
Julie Kotchevar, Ph.D.  
March 4, 2019





# PHYSICAL RESTRAINT (NUMBER OF HOURS CLIENTS SPENT IN PHYSICAL RESTRAINT FOR EVERY 1000 HOURS), ADULTS

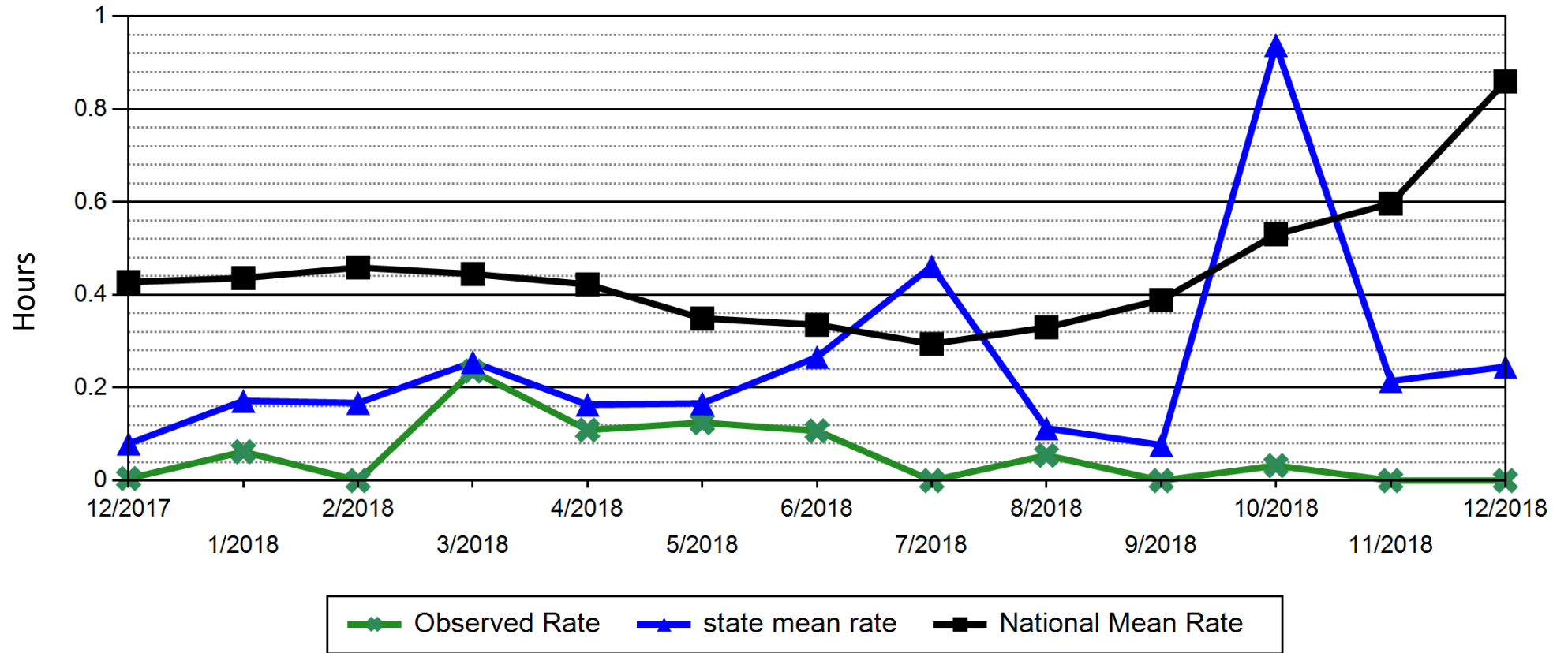
**NNAMHS RESTRAINT DATA**  
(NRI-HBIPS COMPARATIVE REPORT 12/2018)





# SECLUSION (NUMBER OF HOURS CLIENTS SPENT IN SECLUSION FOR EVERY 1000 PHYSICAL HOURS), ADULTS

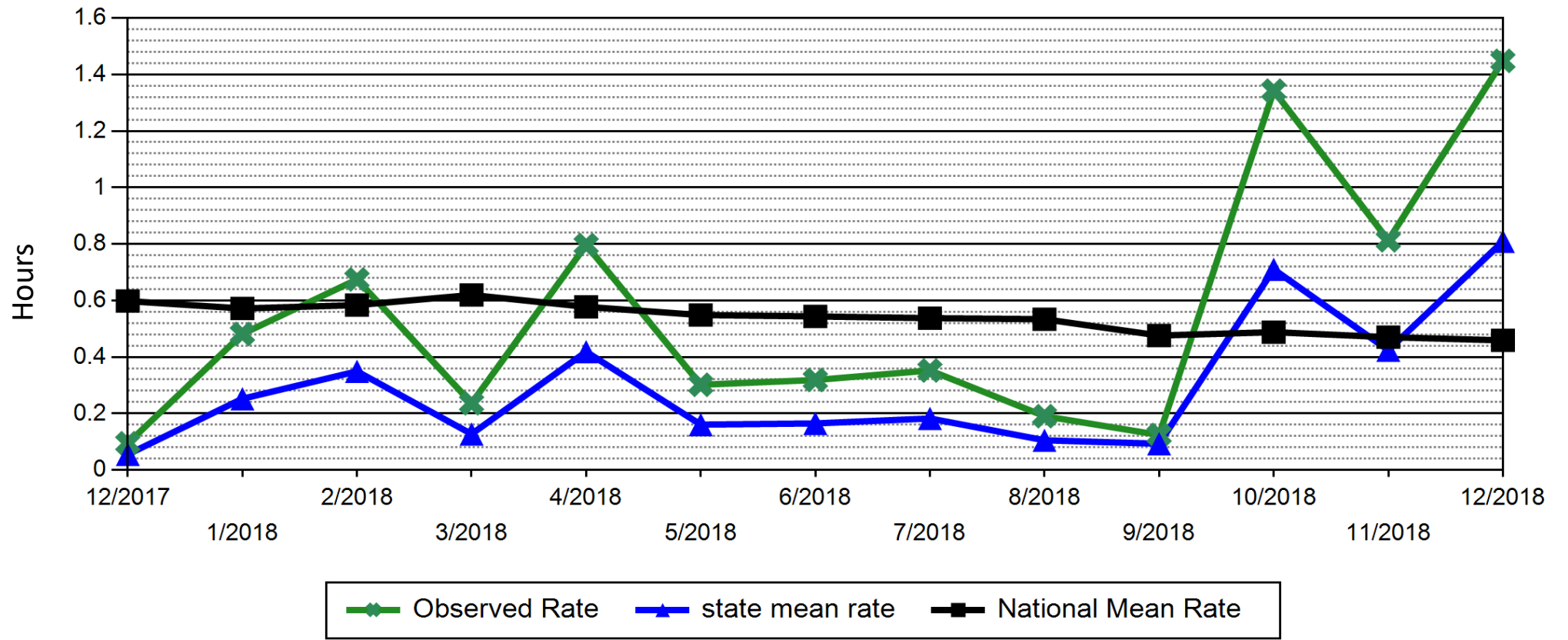
NNAMHS SECLUSION DATA  
(NRI-HBIPS COMPARATIVE REPORT 12/2018)





# PHYSICAL RESTRAINT (NUMBER OF HOURS CLIENTS SPENT IN PHYSICAL RESTRAINT FOR EVERY 1000 PHYSICAL HOURS), ADULTS

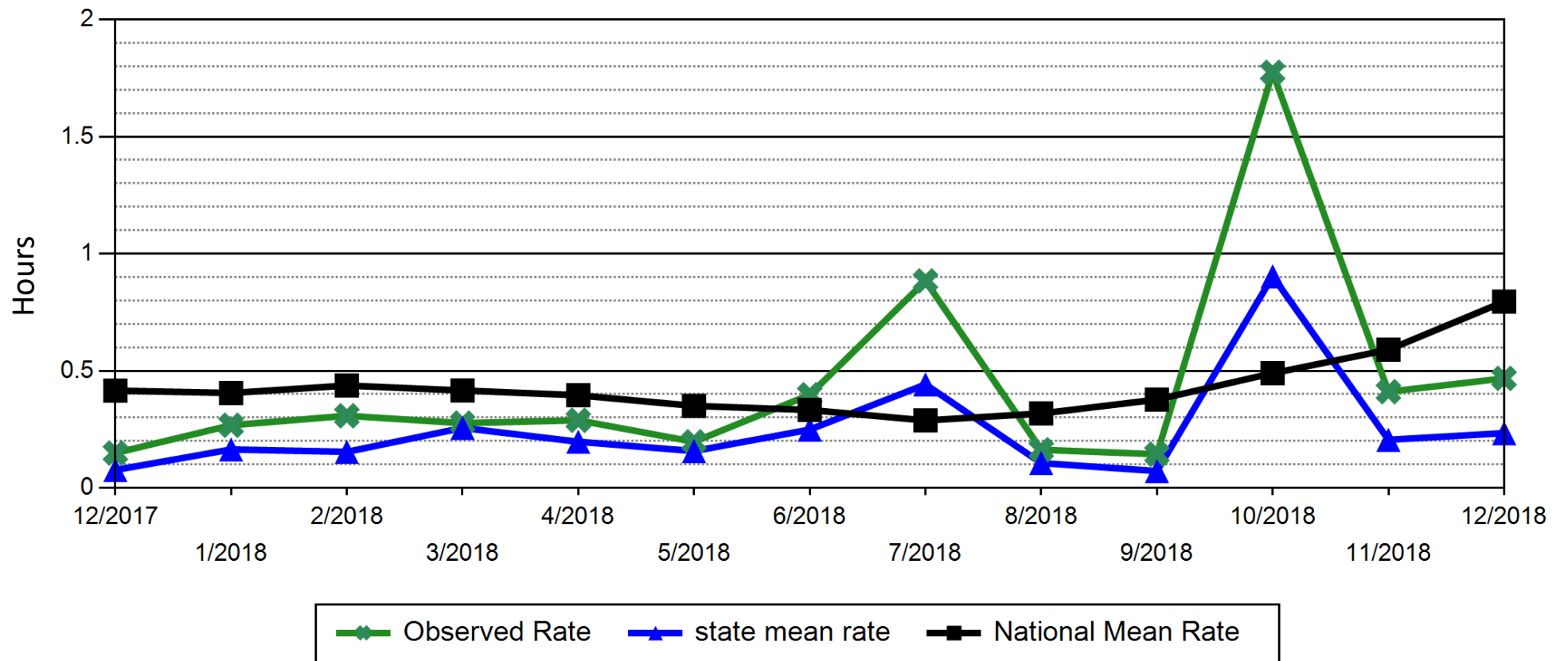
SNAMHS RESTRAINT DATA  
(NRI-HBIPS COMPARATIVE REPORT 12/2018)





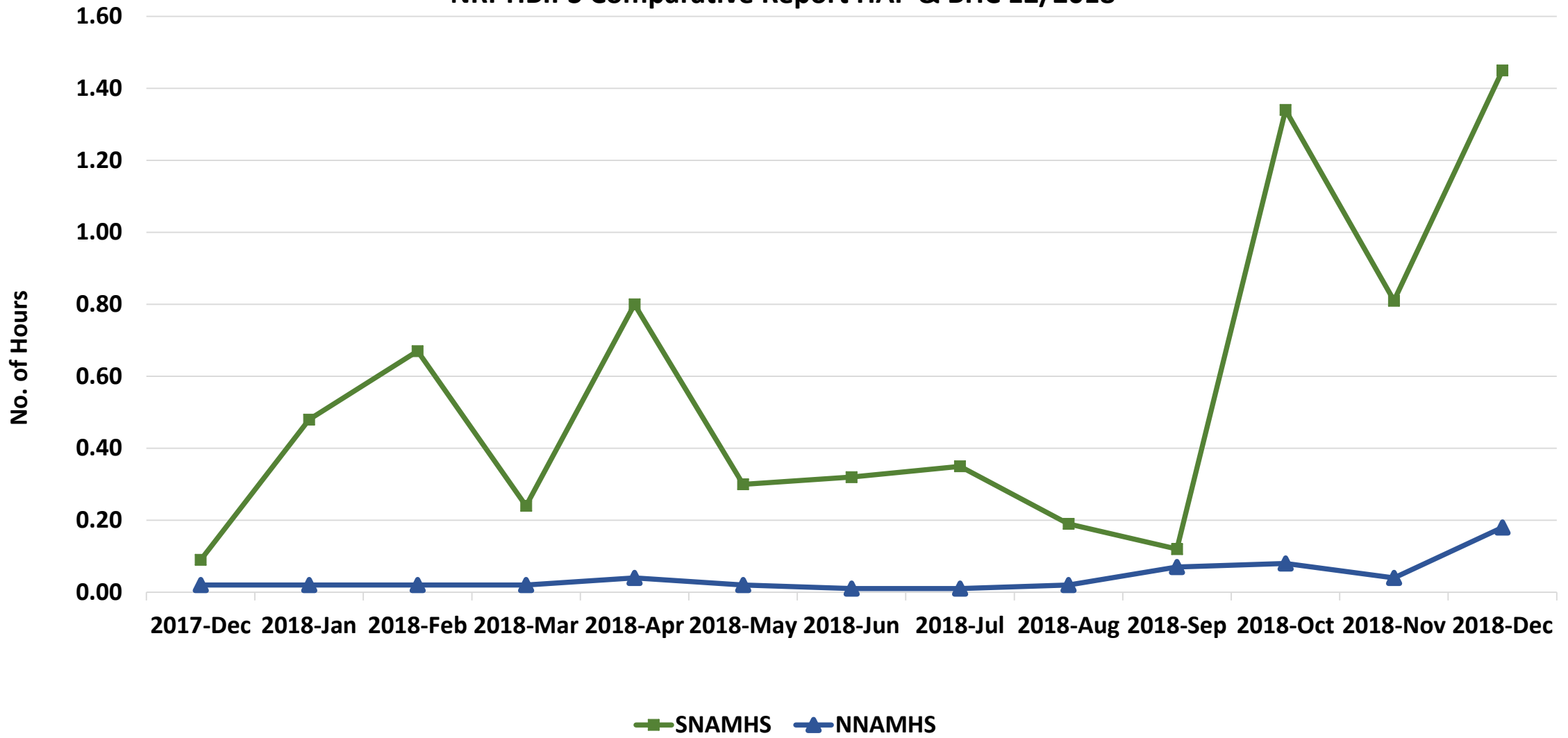
# SECLUSION (NUMBER OF HOURS CLIENTS SPENT IN SECLUSION FOR EVERY 1000 PHYSICAL HOURS), ADULTS

SNAMHS SECLUSION DATA  
(NRI-HBIPS COMPARATIVE REPORT 12/2018)



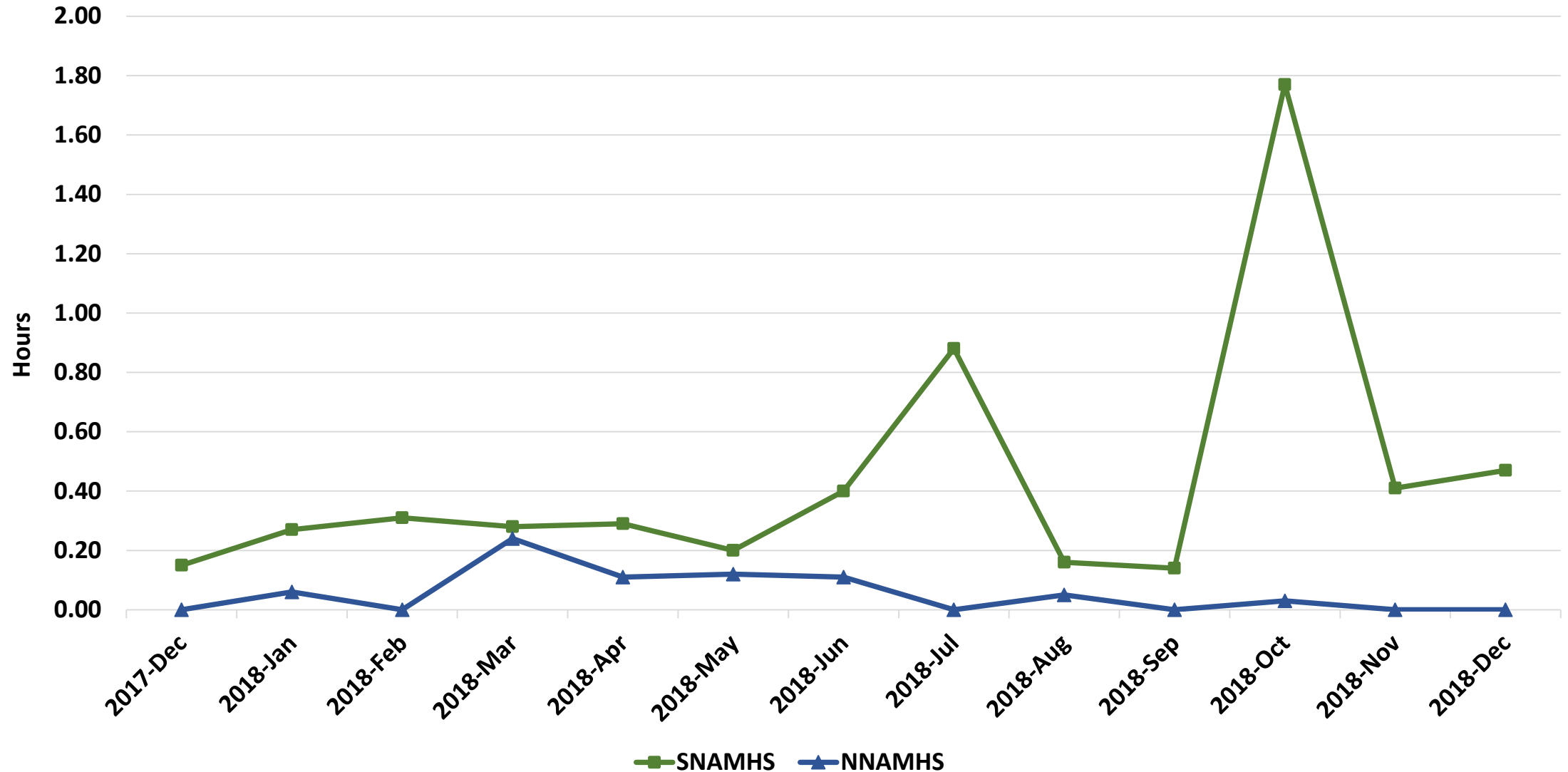


**STATEWIDE**  
**Overall Use of Restraints (# of hours clients spent for every 1000 hours)**  
**NRI-HBIPS Comparative Report HAP & BHC 12/2018**





**STATEWIDE**  
**Overall Use of Seclusion (# of hours clients spent for every 1000 hours)**  
**NRI-HBIPS Comparative Report HAP & BHC 12/2018**



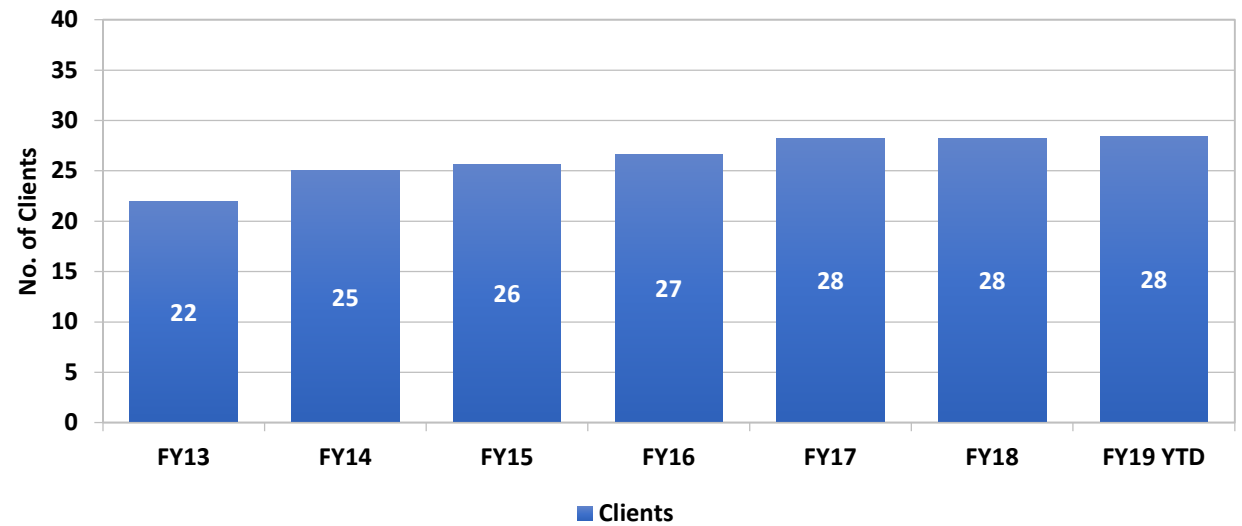


# NNAMHS: DINI TOWNSEND HOSPITAL

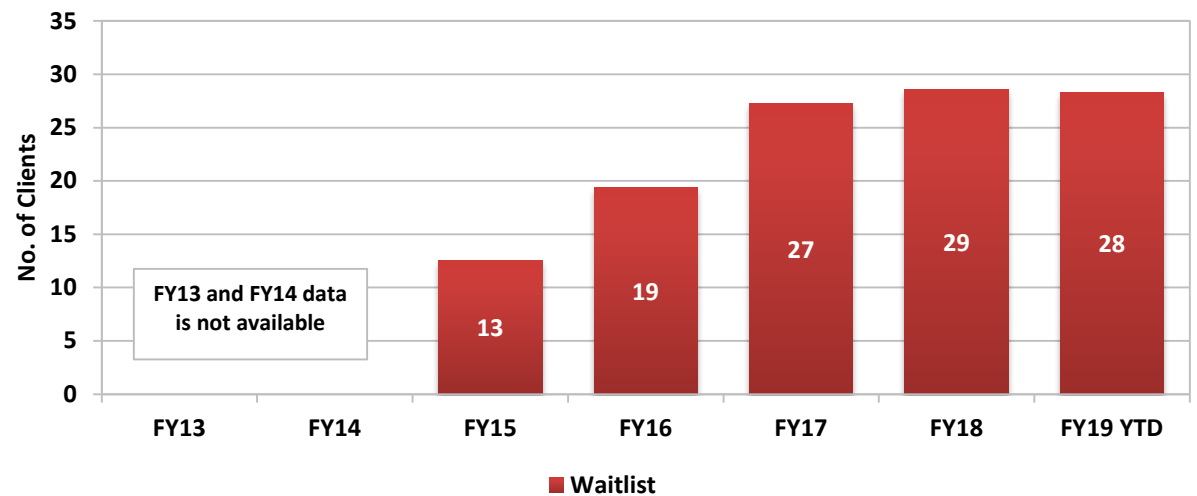
(DHHS Director's Office)

|        | Clients | Average Length of Stay (Days) | Waitlist |
|--------|---------|-------------------------------|----------|
| Jan-17 | 28      | 11                            | 29       |
| Feb-17 | 29      | 17                            | 32       |
| Mar-17 | 29      | 13                            | 29       |
| Apr-17 | 29      | 14                            | 29       |
| May-17 | 28      | 16                            | 28       |
| Jun-17 | 29      | 38                            | 29       |
| Jul-17 | 29      | 21                            | 29       |
| Aug-17 | 28      | 14                            | 30       |
| Sep-17 | 29      | 11                            | 30       |
| Oct-17 | 28      | 20                            | 28       |
| Nov-17 | 27      | 21                            | 27       |
| Dec-17 | 27      | 19                            | 27       |
| Jan-18 | 29      | 14                            | 29       |
| Feb-18 | 29      | 21                            | 29       |
| Mar-18 | 29      | 13                            | 29       |
| Apr-18 | 29      | 16                            | 29       |
| May-18 | 28      | 29                            | 29       |
| Jun-18 | 27      | 22                            | 27       |
| Jul-18 | 26      | 15                            | 25       |
| Aug-18 | 26      | 14                            | 26       |
| Sep-18 | 28      | 21                            | 28       |
| Oct-18 | 30      | 15                            | 30       |
| Nov-18 | 30      | 21                            | 30       |
| Dec-18 | 29      | 20                            | 29       |
| Jan-19 | 30      | 31                            | 30       |

**NNAMHS Dini-Townsend Hospital Clients - Fiscal Year Averages**



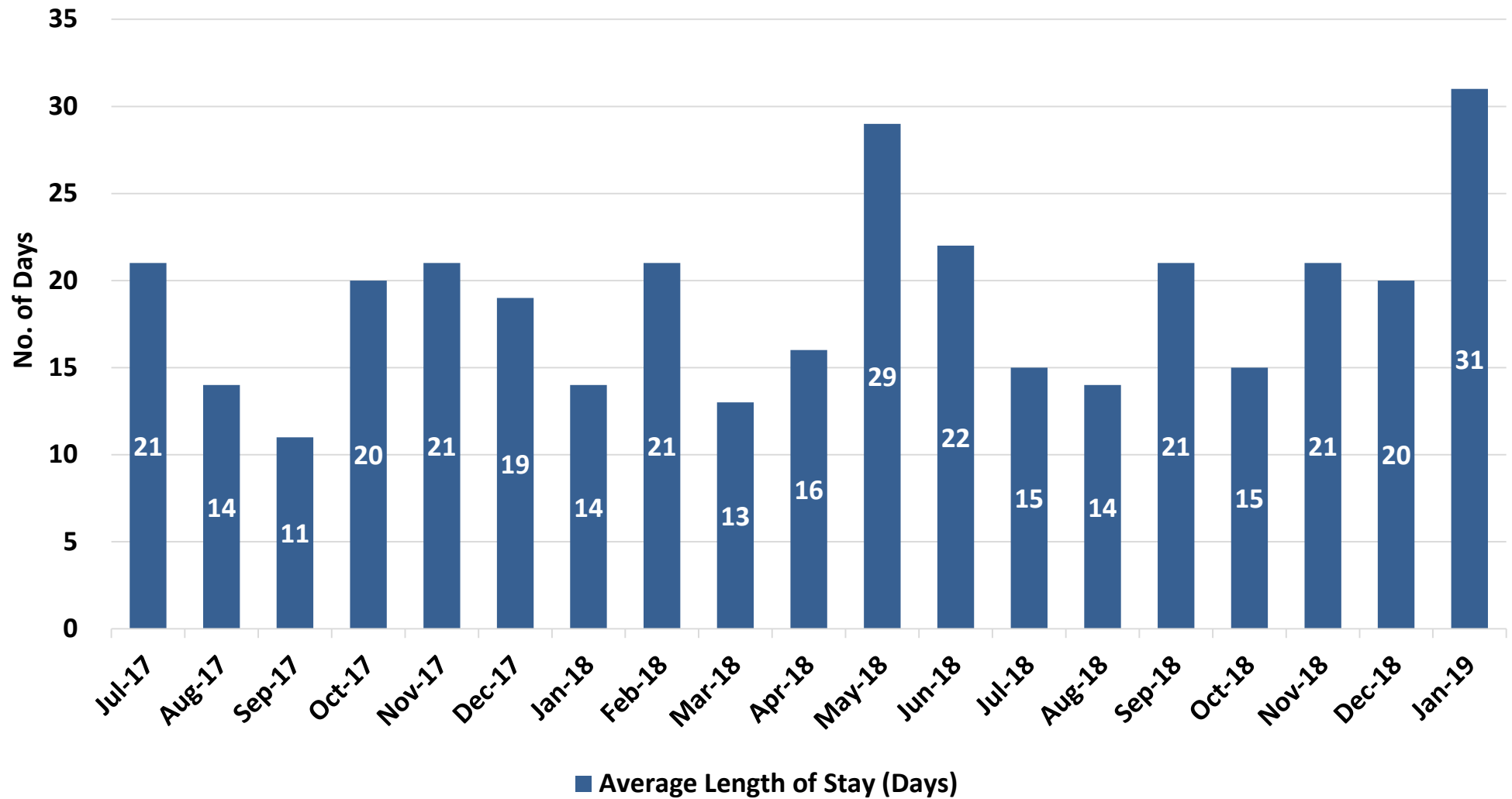
**NNAMHS Dini-Townsend Hospital Waitlist - Fiscal Year Averages**







## NNAMHS Average Length of Stay (Days)



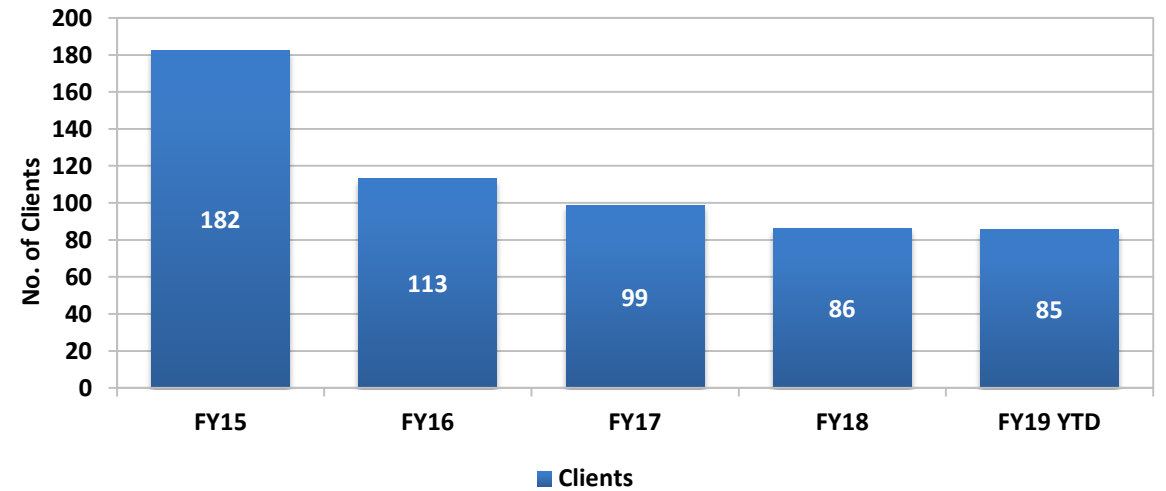


# SNAMHS: RAWSON NEAL HOSPITAL

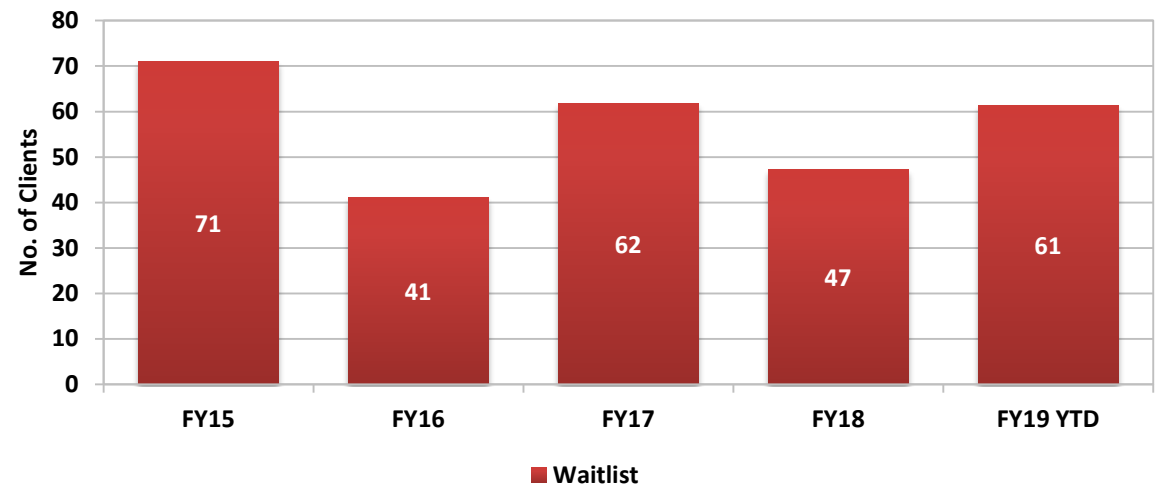
(DHHS Director's Office)

|        | Clients | Average Length of Stay (Days) | Waitlist |
|--------|---------|-------------------------------|----------|
| Jan-17 | 104     | 19                            | 73       |
| Feb-17 | 97      | 24                            | 65       |
| Mar-17 | 96      | 19                            | 55       |
| Apr-17 | 94      | 17                            | 61       |
| May-17 | 91      | 13                            | 60       |
| Jun-17 | 81      | 17                            | 79       |
| Jul-17 | 87      | 21                            | 60       |
| Aug-17 | 87      | 16                            | 57       |
| Sep-17 | 85      | 11                            | 38       |
| Oct-17 | 86      | 13                            | 38       |
| Nov-17 | 86      | 14                            | 42       |
| Dec-17 | 86      | 11                            | 43       |
| Jan-18 | 87      | 12                            | 48       |
| Feb-18 | 86      | 12                            | 49       |
| Mar-18 | 87      | 9                             | 43       |
| Apr-18 | 86      | 15                            | 42       |
| May-18 | 86      | 11                            | 46       |
| Jun-18 | 87      | 13                            | 61       |
| Jul-18 | 87      | 17                            | 55       |
| Aug-18 | 87      | 18                            | 65       |
| Sep-18 | 87      | 19                            | 57       |
| Oct-18 | 87      | 12                            | 67       |
| Nov-18 | 86      | 16                            | 58       |
| Dec-18 | 83      | 14                            | 64       |
| Jan-19 | 81      | 17                            | 63       |

SNAMHS Rawson-Neal Hospital Clients - Fiscal Year Averages

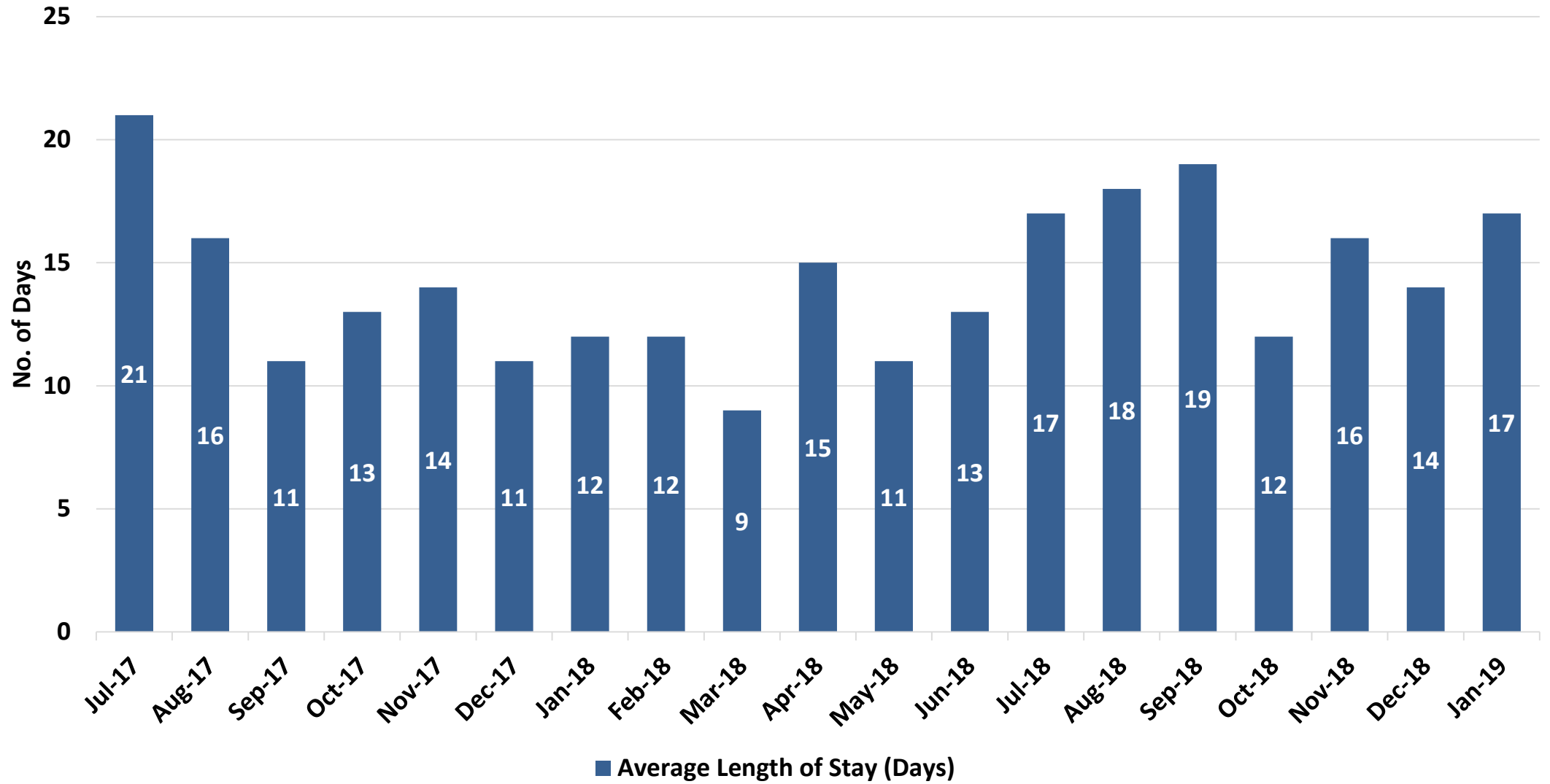


SNAMHS Rawson-Neal Hospital Waitlist - Fiscal Year Averages





### SNAMHS Average Length of Stay (Days)





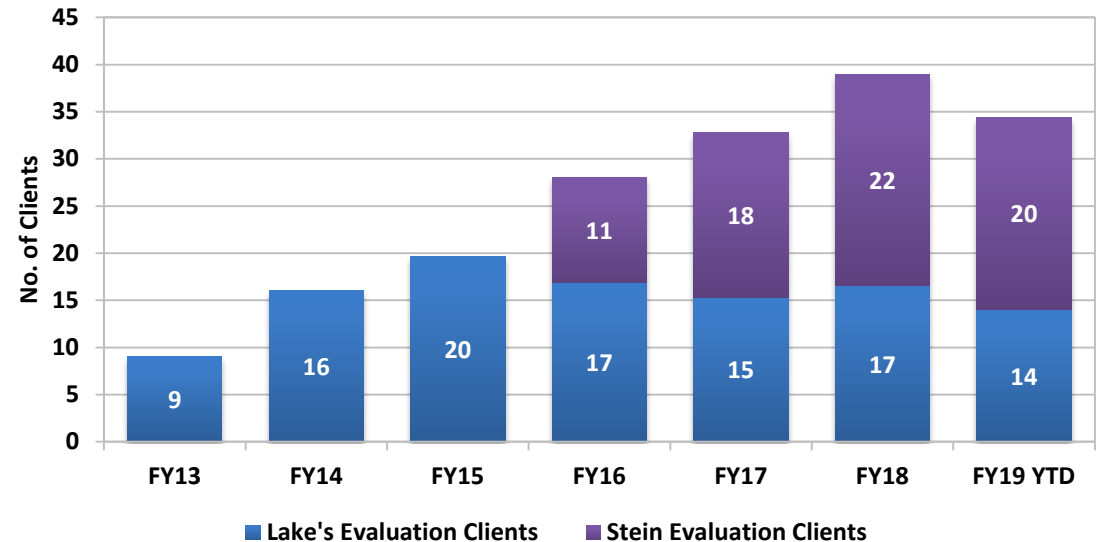
# ADULT FORENSIC FACILITIES: EVALUATION CLIENTS

(DHHS Director's Office)

|        | Lake's Evaluation Clients | Lake's Average Length of Stay (Days) | Stein Evaluation Clients | Stein Average Length of Stay (Days) |
|--------|---------------------------|--------------------------------------|--------------------------|-------------------------------------|
| Jan-17 | 13                        | 88                                   | 22                       | 87                                  |
| Feb-17 | 14                        | 158                                  | 15                       | 102                                 |
| Mar-17 | 19                        | 31                                   | 16                       | 96                                  |
| Apr-17 | 18                        | 53                                   | 15                       | 75                                  |
| May-17 | 13                        | 98                                   | 20                       | 72                                  |
| Jun-17 | 11                        | 183                                  | 20                       | 127                                 |
| Jul-17 | 12                        | 151                                  | 23                       | 64                                  |
| Aug-17 | 9                         | 62                                   | 22                       | 75                                  |
| Sep-17 | 14                        | 62                                   | 17                       | 98                                  |
| Oct-17 | 15                        | 60                                   | 19                       | 88                                  |
| Nov-17 | 16                        | 86                                   | 23                       | 63                                  |
| Dec-17 | 15                        | 76                                   | 25                       | 100                                 |
| Jan-18 | 16                        | 69                                   | 25                       | 64                                  |
| Feb-18 | 18                        | 14                                   | 22                       | 130                                 |
| Mar-18 | 22                        | 89                                   | 19                       | 70                                  |
| Apr-18 | 21                        | 98                                   | 21                       | 110                                 |
| May-18 | 20                        | 31                                   | 26                       | 141                                 |
| Jun-18 | 21                        | 100                                  | 27                       | 61                                  |
| Jul-18 | 18                        | 120                                  | 27                       | 86                                  |
| Aug-18 | 16                        | 98                                   | 26                       | 93                                  |
| Sep-18 | 15                        | 60                                   | 24                       | 110                                 |
| Oct-18 | 14                        | 127                                  | 16                       | 89                                  |
| Nov-18 | 12                        | 86                                   | 17                       | 108                                 |
| Dec-18 | 11                        | 118                                  | 19                       | 77                                  |
| Jan-19 | 12                        | 78                                   | 14                       | 56                                  |

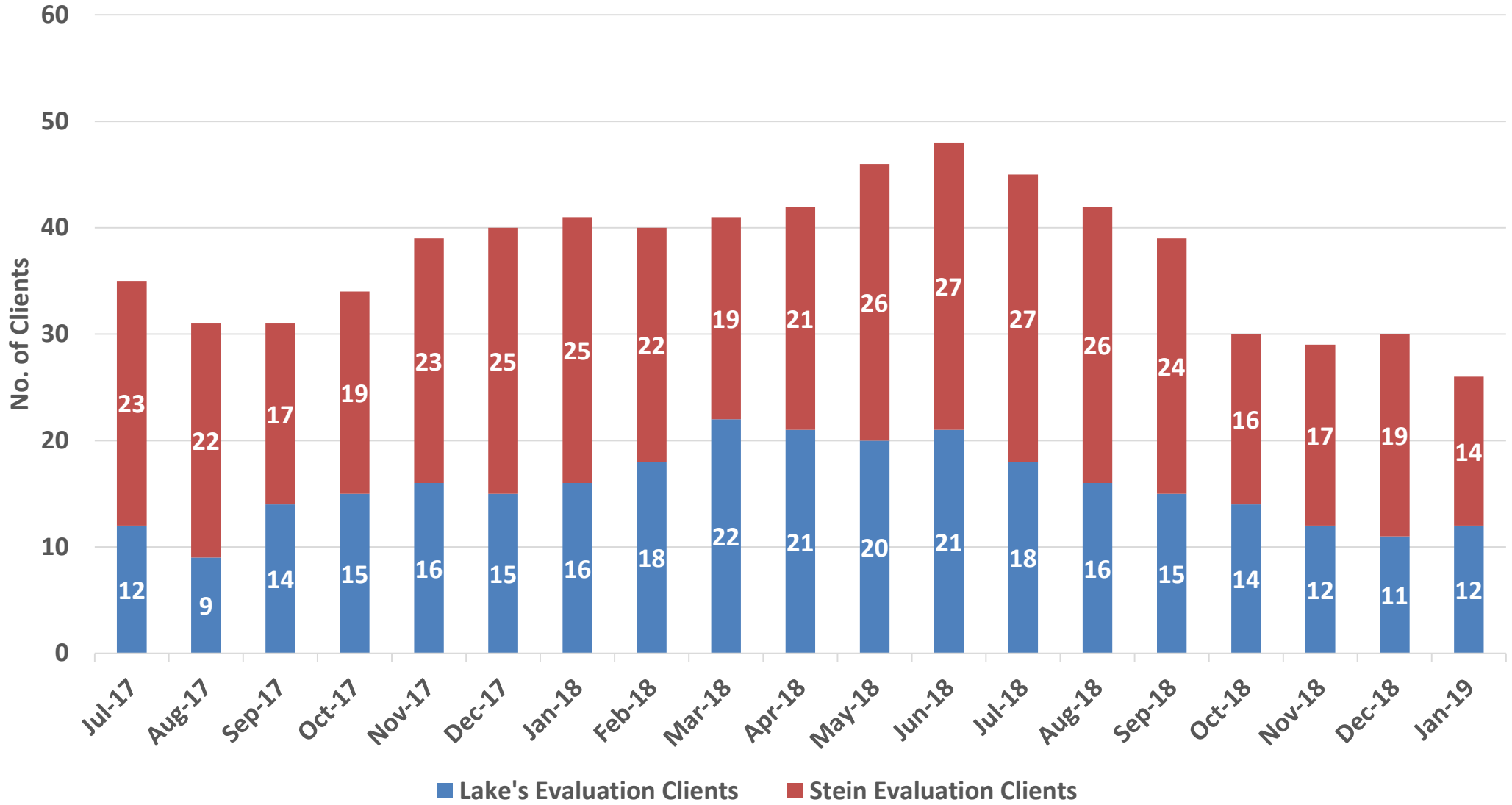
| Fiscal Year Averages |                           |                                      |                          |                                     |
|----------------------|---------------------------|--------------------------------------|--------------------------|-------------------------------------|
|                      | Lake's Evaluation Clients | Lake's Average Length of Stay (Days) | Stein Evaluation Clients | Stein Average Length of Stay (Days) |
| FY13                 | 9                         | 98                                   |                          |                                     |
| FY14                 | 16                        | 61                                   |                          |                                     |
| FY15                 | 20                        | 94                                   |                          |                                     |
| FY16                 | 17                        | 84                                   | 11                       | 88                                  |
| FY17                 | 15                        | 90                                   | 18                       | 89                                  |
| FY18                 | 17                        | 75                                   | 22                       | 89                                  |
| FY19 YTD             | 14                        | 98                                   | 20                       | 88                                  |

Evaluation Clients - Fiscal Year Averages



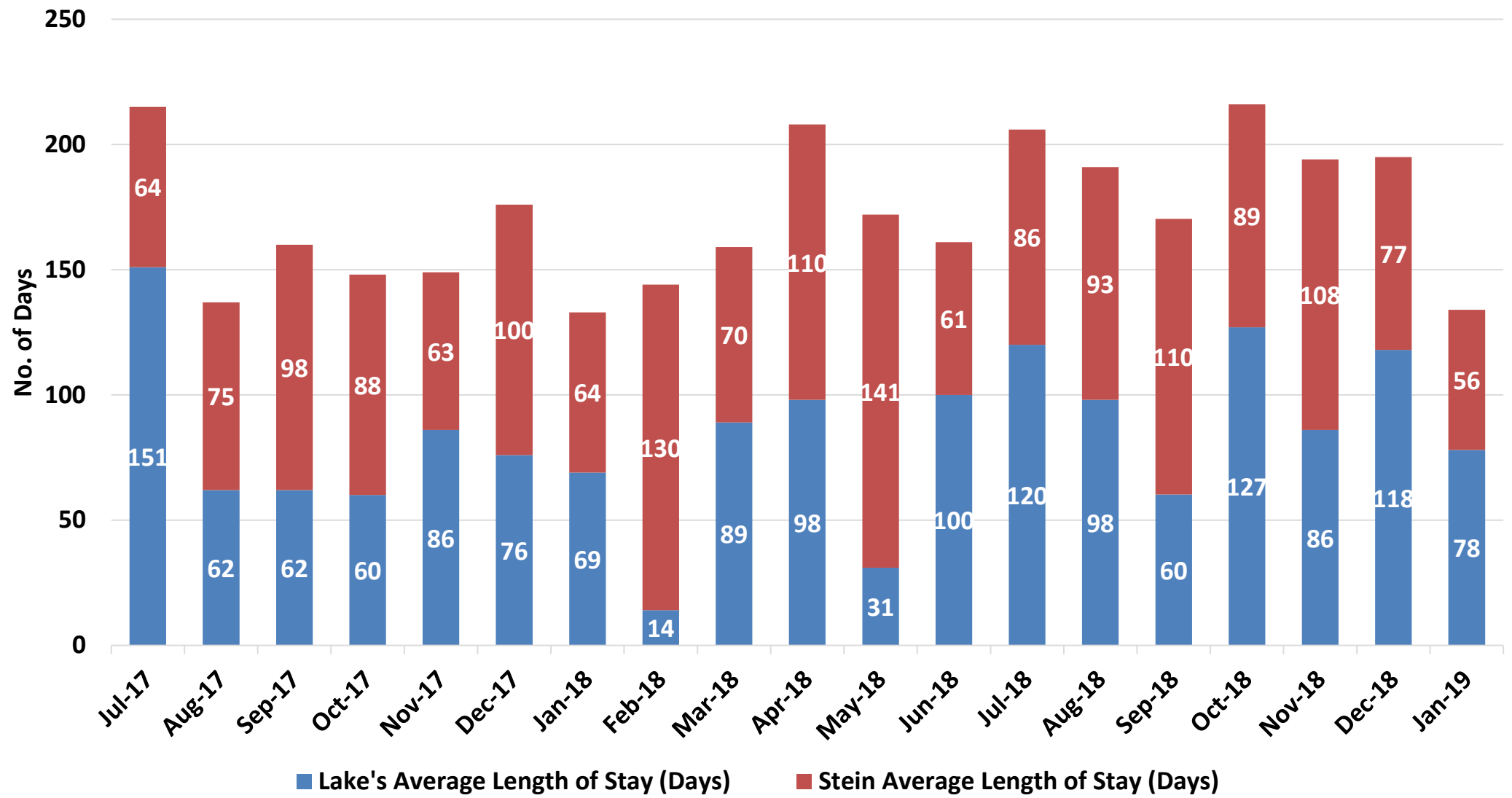


### Adult Forensic Evaluation Clients





### Evaluation Clients - Average Length of Stay (Days)





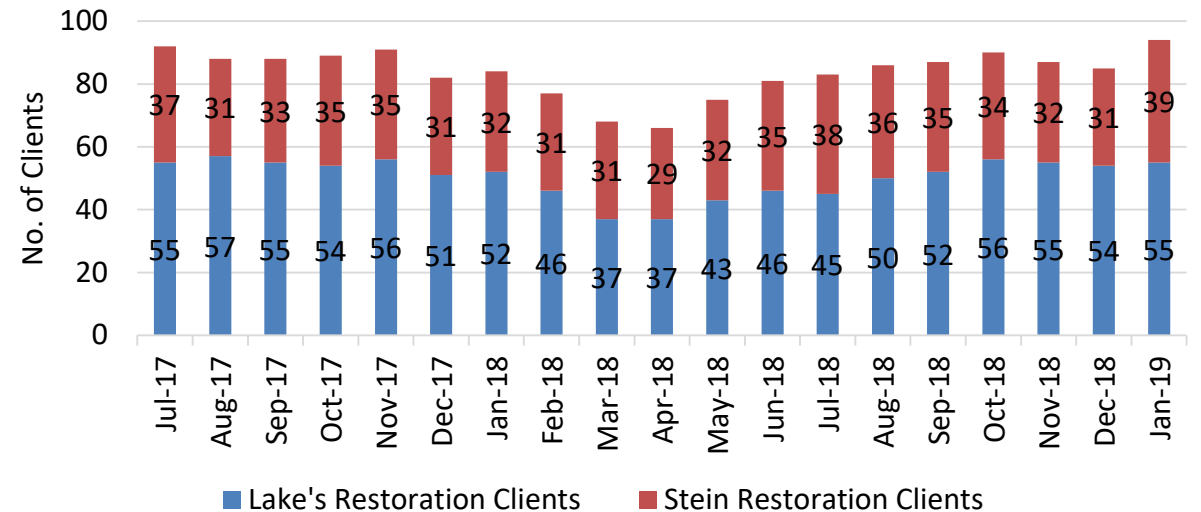
# ADULT FORENSIC FACILITIES: RESTORATION CLIENTS

## (DHHS Director's Office)

|        | Lake's Restoration Clients | Lake's Average Length of Stay (Days) | Stein Restoration Clients | Stein Average Length of Stay (Days) | Statewide Restoration Waitlist | Statewide Average Wait (Days) |
|--------|----------------------------|--------------------------------------|---------------------------|-------------------------------------|--------------------------------|-------------------------------|
| Jan-17 | 49                         | 116                                  | 39                        | 115                                 | 22                             | 5                             |
| Feb-17 | 48                         | 105                                  | 47                        | 105                                 | 16                             | 4                             |
| Mar-17 | 44                         | 76                                   | 44                        | 94                                  | 12                             | 6                             |
| Apr-17 | 41                         | 110                                  | 41                        | 137                                 | 21                             | 4                             |
| May-17 | 50                         | 93                                   | 40                        | 87                                  | 25                             | 6                             |
| Jun-17 | 52                         | 64                                   | 44                        | 114                                 | 29                             | 6                             |
| Jul-17 | 55                         | 117                                  | 37                        | 83                                  | 19                             | 4                             |
| Aug-17 | 57                         | 101                                  | 31                        | 120                                 | 17                             | 5                             |
| Sep-17 | 55                         | 72                                   | 33                        | 101                                 | 23                             | 5                             |
| Oct-17 | 54                         | 87                                   | 35                        | 98                                  | 17                             | 5                             |
| Nov-17 | 56                         | 115                                  | 35                        | 68                                  | 14                             | 6                             |
| Dec-17 | 51                         | 93                                   | 31                        | 98                                  | 16                             | 4                             |
| Jan-18 | 52                         | 119                                  | 32                        | 94                                  | 15                             | 7                             |
| Feb-18 | 46                         | 125                                  | 31                        | 75                                  | 9                              | 6                             |
| Mar-18 | 37                         | 110                                  | 31                        | 81                                  | 10                             | 4                             |
| Apr-18 | 37                         | 82                                   | 29                        | 82                                  | 12                             | 5                             |
| May-18 | 43                         | 119                                  | 32                        | 122                                 | 18                             | 4                             |
| Jun-18 | 46                         | 66                                   | 35                        | 104                                 | 17                             | 4                             |
| Jul-18 | 45                         | 102                                  | 38                        | 55                                  | 22                             | 3                             |
| Aug-18 | 50                         | 100                                  | 36                        | 70                                  | 16                             | 5                             |
| Sep-18 | 52                         | 93                                   | 35                        | 69                                  | 16                             | 6                             |
| Oct-18 | 56                         | 106                                  | 34                        | 60                                  | 17                             | 5                             |
| Nov-18 | 55                         | 92                                   | 32                        | 111                                 | 22                             | 4                             |
| Dec-18 | 54                         | 103                                  | 31                        | 67                                  | 24                             | 5                             |
| Jan-19 | 55                         | 114                                  | 39                        | 71                                  | 16                             | 6                             |

| Fiscal Year Averages |                            |                                      |                           |                                     |                                |                     |
|----------------------|----------------------------|--------------------------------------|---------------------------|-------------------------------------|--------------------------------|---------------------|
|                      | Lake's Restoration Clients | Lake's Average Length of Stay (Days) | Stein Restoration Clients | Stein Average Length of Stay (Days) | Statewide Restoration Waitlist | Average Wait (Days) |
| FY13                 | 45                         | 81                                   |                           |                                     |                                |                     |
| FY14                 | 48                         | 96                                   |                           |                                     |                                |                     |
| FY15                 | 50                         | 92                                   |                           |                                     |                                |                     |
| FY16                 | 49                         | 108                                  | 32                        | 88                                  | 17                             | 24                  |
| FY17                 | 47                         | 97                                   | 42                        | 105                                 | 18                             | 5                   |
| FY18                 | 49                         | 101                                  | 33                        | 94                                  | 16                             | 5                   |
| FY19 YTD             | 52                         | 101                                  | 35                        | 72                                  | 19                             | 5                   |

Adult Forensic Restoration Clients

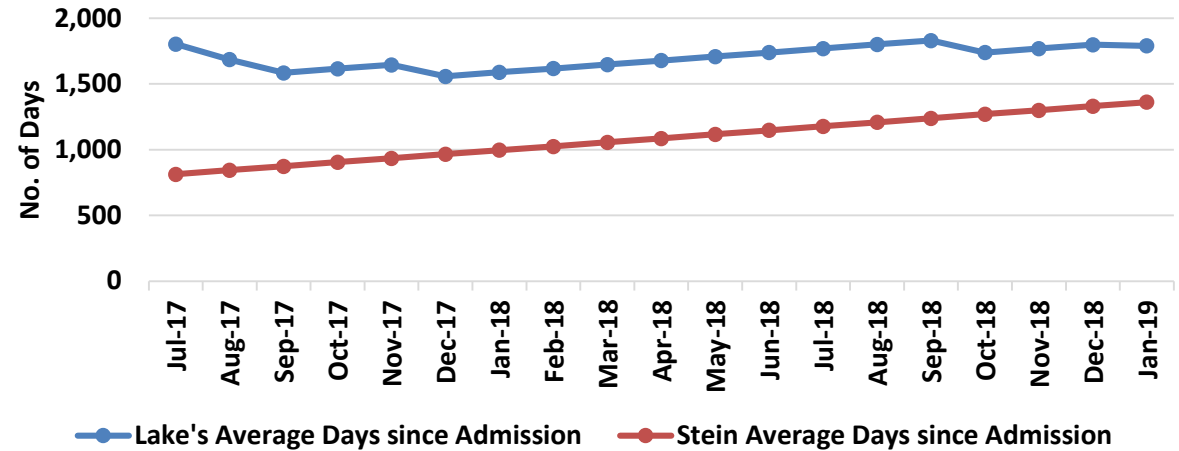


# ADULT FORENSIC FACILITIES: LONG-TERM COMMITMENTS

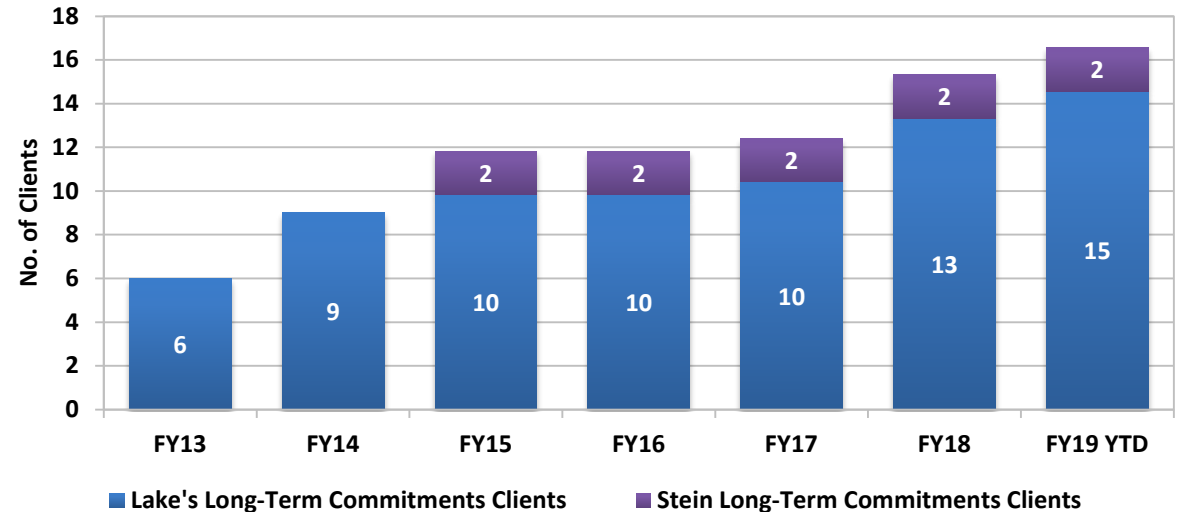
(DHHS Director's Office)

|        | Lake's Long-Term Commitments Clients | Lake's Average Days since Admission | Stein Long-Term Commitments Clients | Stein Average Days since Admission |
|--------|--------------------------------------|-------------------------------------|-------------------------------------|------------------------------------|
| Jan-17 | 11                                   | 1,637                               | 2                                   | 632                                |
| Feb-17 | 11                                   | 1,665                               | 2                                   | 660                                |
| Mar-17 | 10                                   | 1,853                               | 2                                   | 691                                |
| Apr-17 | 10                                   | 1,883                               | 2                                   | 721                                |
| May-17 | 11                                   | 1,613                               | 2                                   | 752                                |
| Jun-17 | 11                                   | 1,773                               | 2                                   | 782                                |
| Jul-17 | 11                                   | 1,804                               | 2                                   | 813                                |
| Aug-17 | 12                                   | 1,685                               | 2                                   | 844                                |
| Sep-17 | 13                                   | 1,585                               | 2                                   | 874                                |
| Oct-17 | 13                                   | 1,616                               | 2                                   | 905                                |
| Nov-17 | 13                                   | 1,646                               | 2                                   | 935                                |
| Dec-17 | 14                                   | 1,558                               | 2                                   | 966                                |
| Jan-18 | 14                                   | 1,589                               | 2                                   | 997                                |
| Feb-18 | 14                                   | 1,617                               | 2                                   | 1,025                              |
| Mar-18 | 14                                   | 1,648                               | 2                                   | 1,056                              |
| Apr-18 | 14                                   | 1,678                               | 2                                   | 1,086                              |
| May-18 | 14                                   | 1,709                               | 2                                   | 1,117                              |
| Jun-18 | 14                                   | 1,739                               | 2                                   | 1,147                              |
| Jul-18 | 14                                   | 1,770                               | 2                                   | 1,178                              |
| Aug-18 | 14                                   | 1,801                               | 2                                   | 1,209                              |
| Sep-18 | 14                                   | 1,831                               | 2                                   | 1,239                              |
| Oct-18 | 15                                   | 1,739                               | 2                                   | 1,270                              |
| Nov-18 | 15                                   | 1,769                               | 2                                   | 1,300                              |
| Dec-18 | 15                                   | 1,799                               | 2                                   | 1,331                              |
| Jan-19 | 15                                   | 1,790                               | 2                                   | 1,362                              |

### Long Term Average Length of Stay (Days)



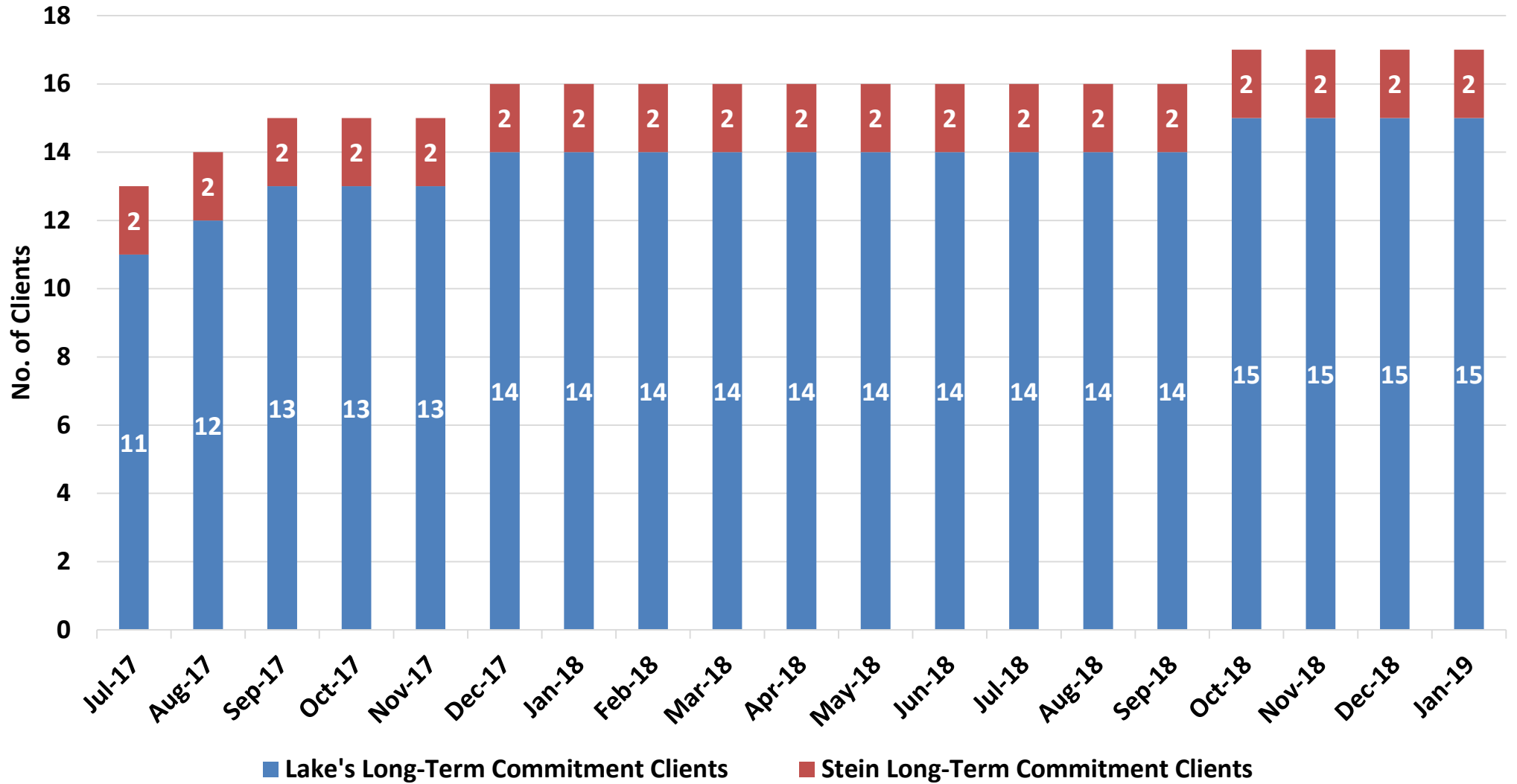
### Long-Term Commitments - Fiscal Year Averages







### Adult Forensic Long-Term Commitment Clients



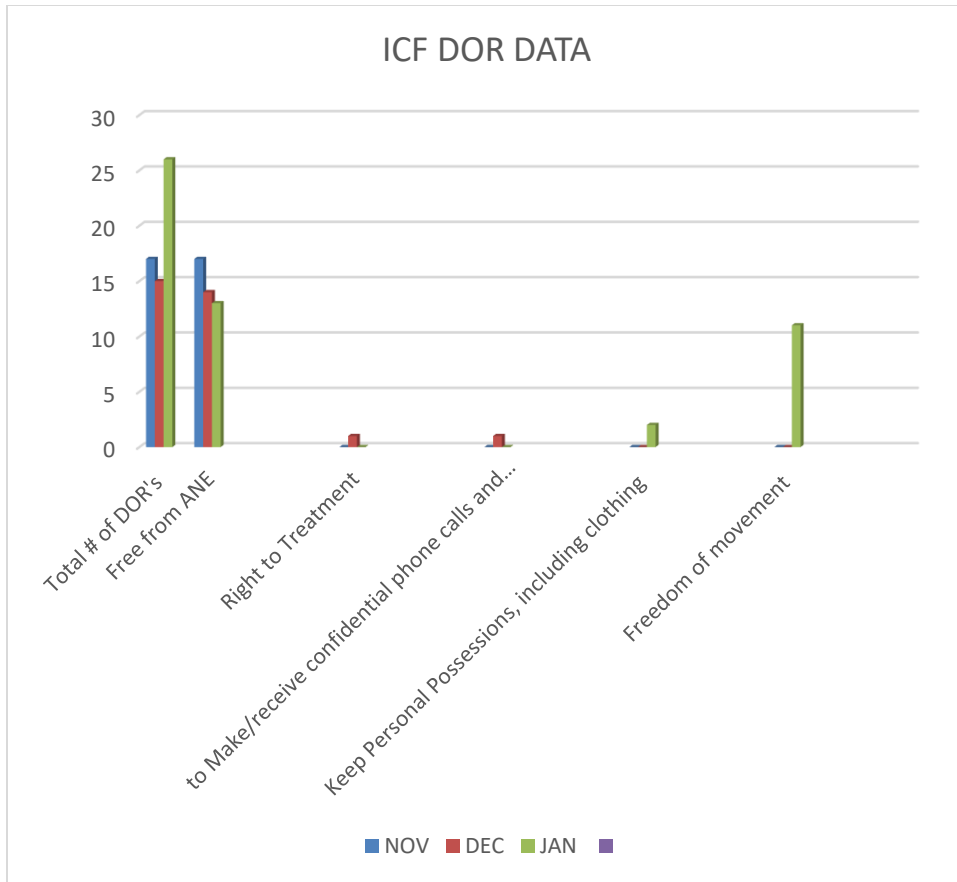


# THANK YOU!

Julie Kotchevar, Ph.D.  
[jukotchevar@dhhs.nv.gov](mailto:jukotchevar@dhhs.nv.gov)  
(775)684-5850

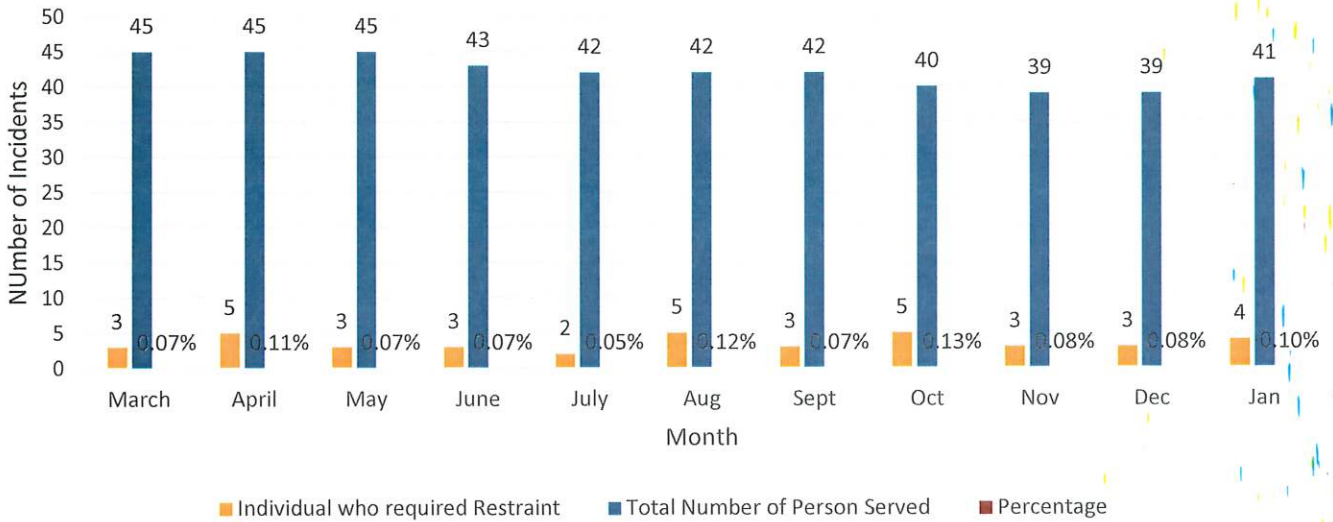
Division of Public and Behavioral Health

State of Nevada

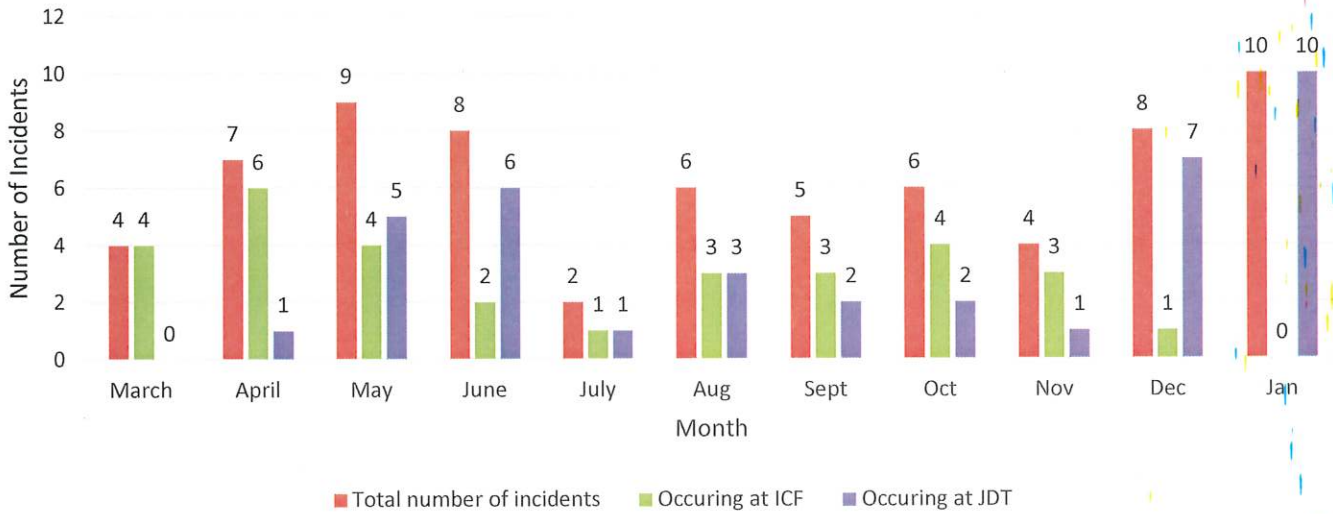


- Free from ANE -Note DRC ICF must report and investigated each incident of Peer to Peer Aggression as Abuse -physical abuse due to the physical contact. Must also rule out staff being neglectful DOR's were completed due to the peer to peer physical contact, neglect was not substantiated in the numbers above.
- Freedom of movement increase in January was due to Kitchen needing to be locked for safety - exposed wire needed to be repaired

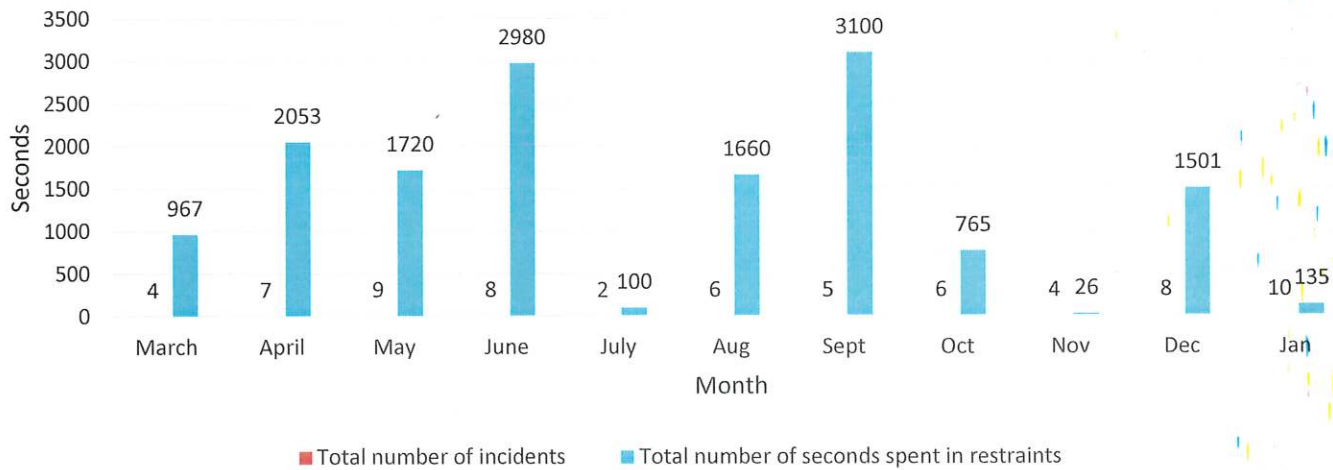
### DRC ICF TOTALS



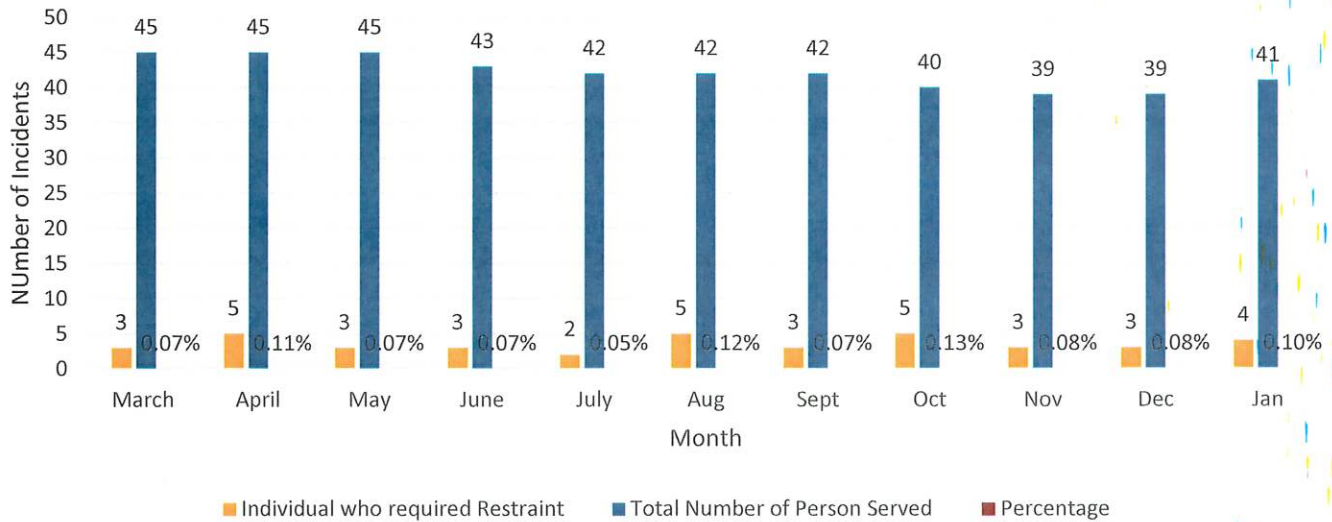
### DRC ICF TOTALS



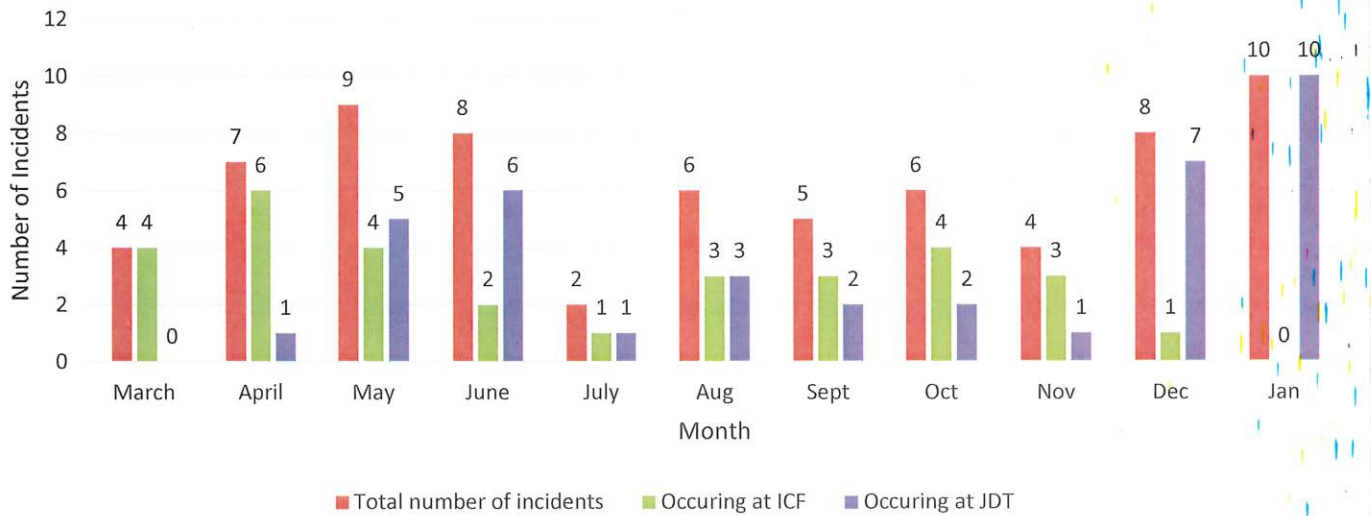
### DRC ICF TOTALS



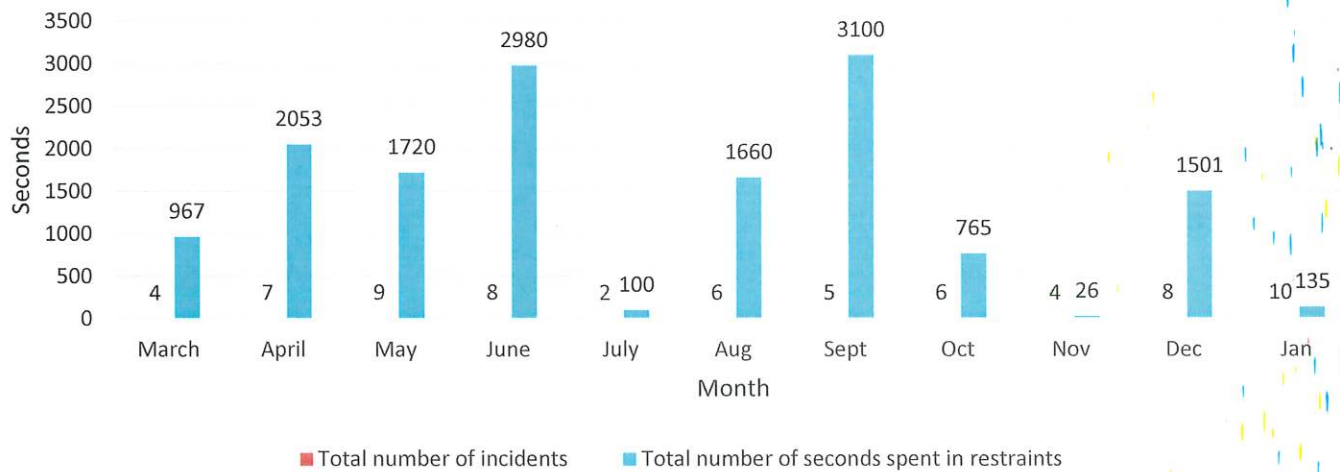
### DRC ICF TOTALS



### DRC ICF TOTALS

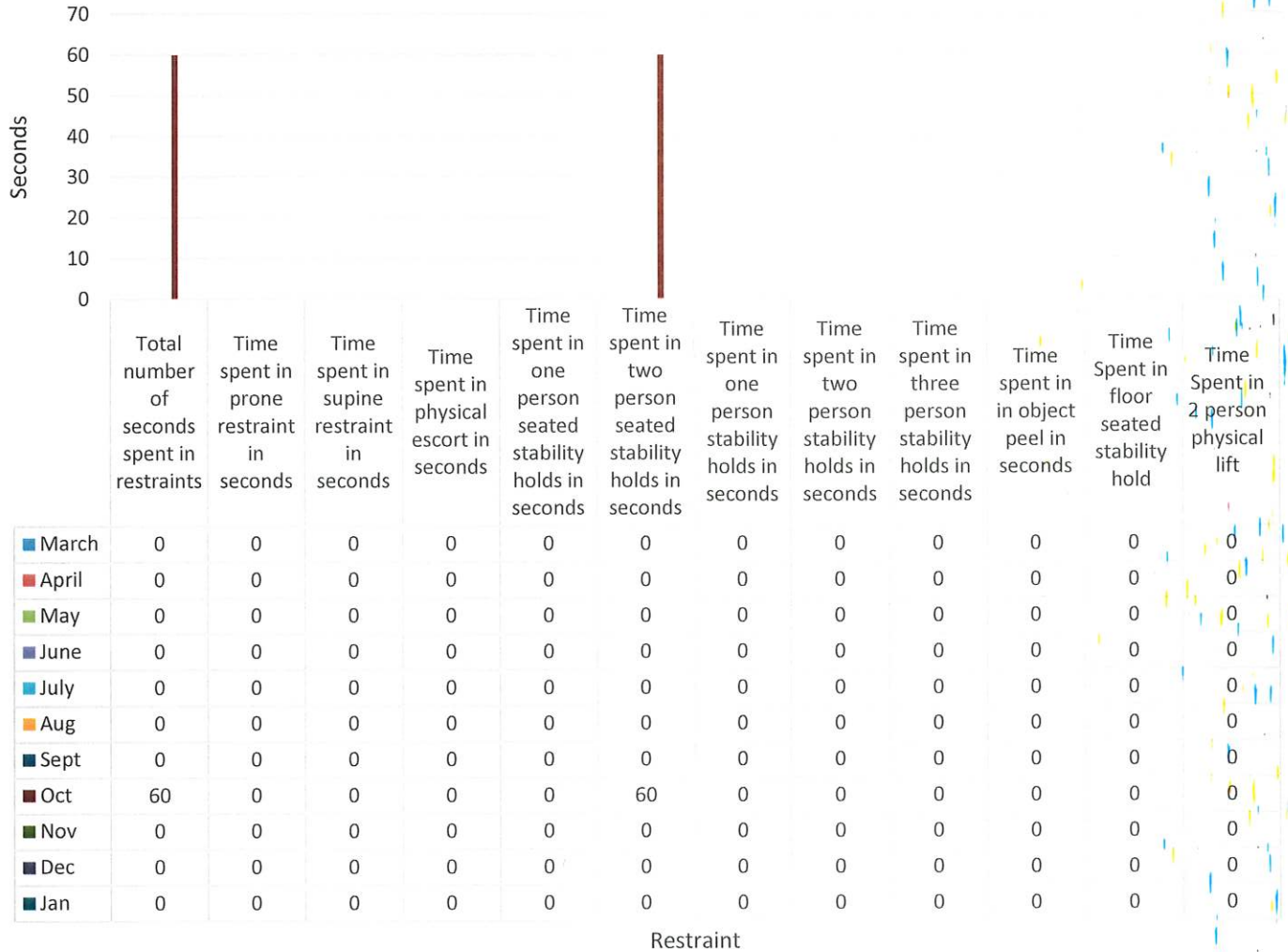


### DRC ICF TOTALS





## AS Restraint in Seconds per Month



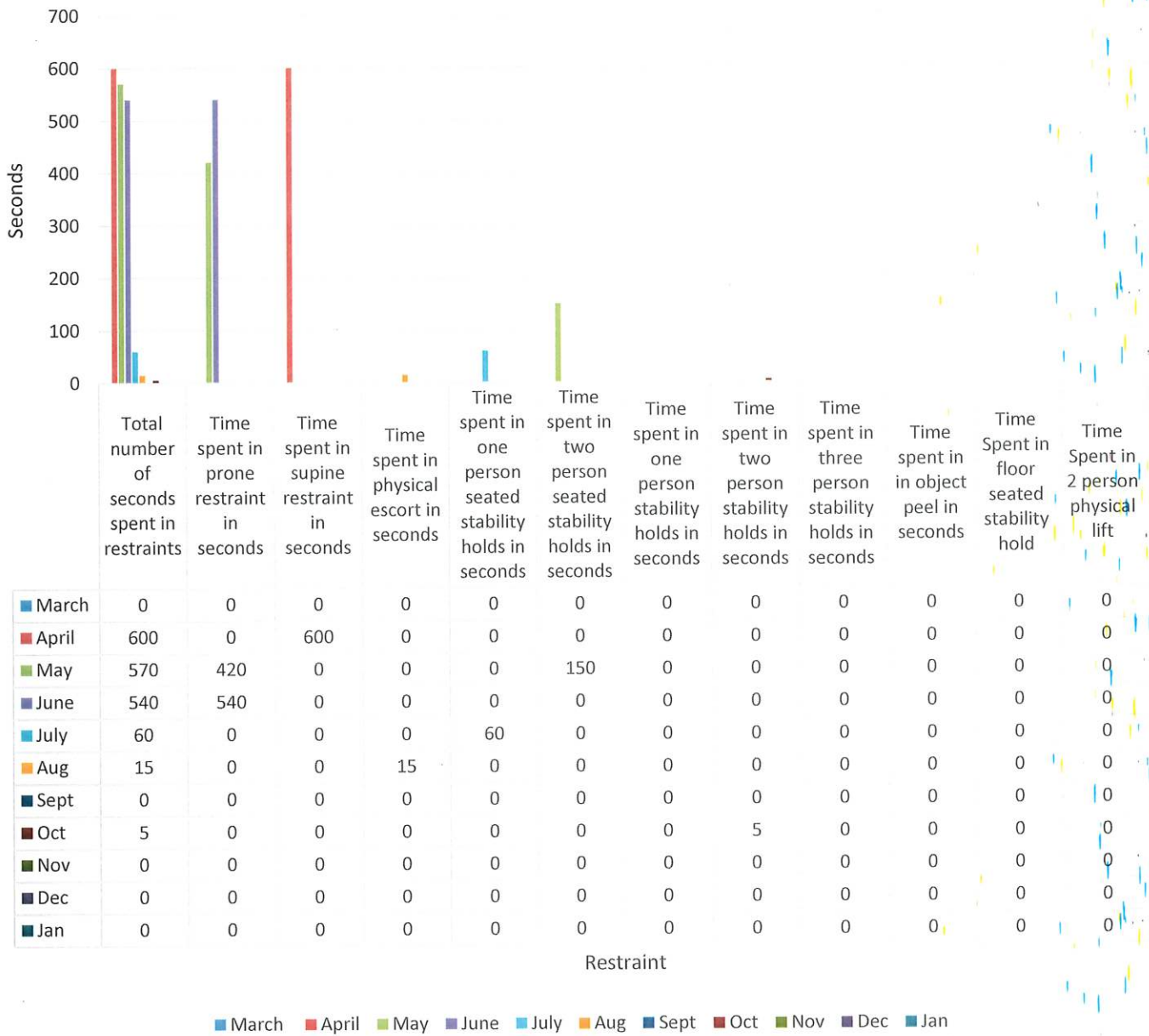
Restraint

■ March 
 ■ April 
 ■ May 
 ■ June 
 ■ July 
 ■ Aug 
 ■ Sept 
 ■ Oct 
 ■ Nov 
 ■ Dec 
 ■ Jan

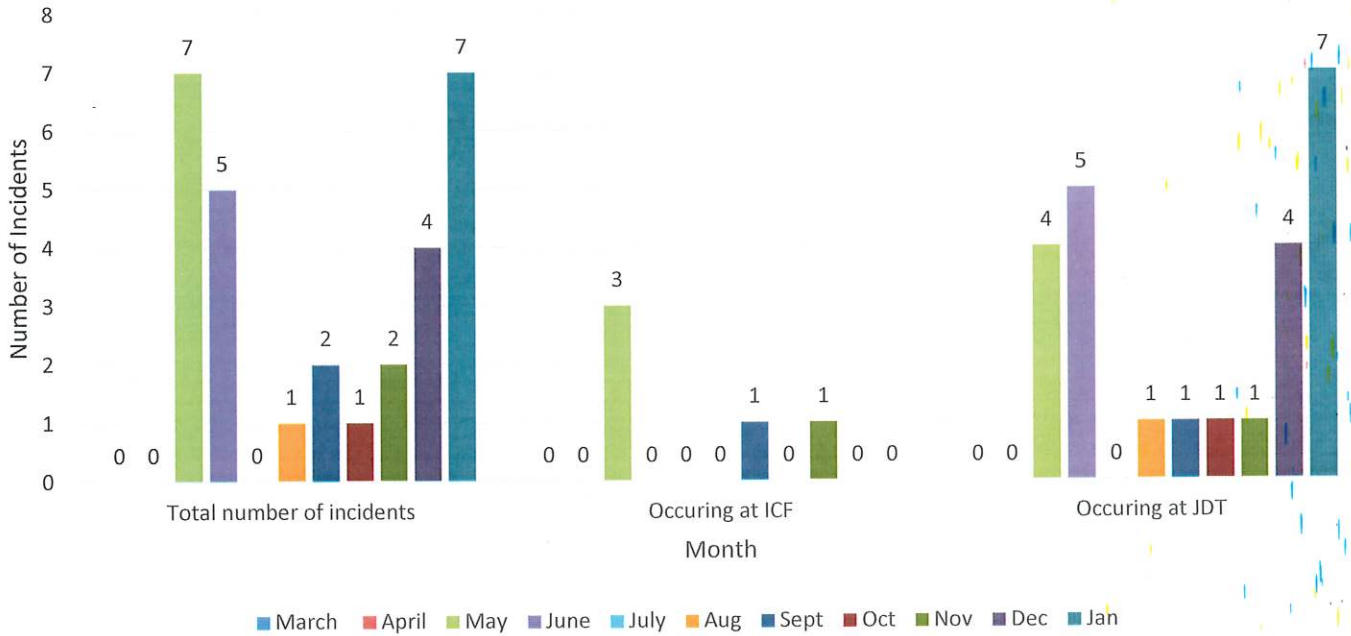




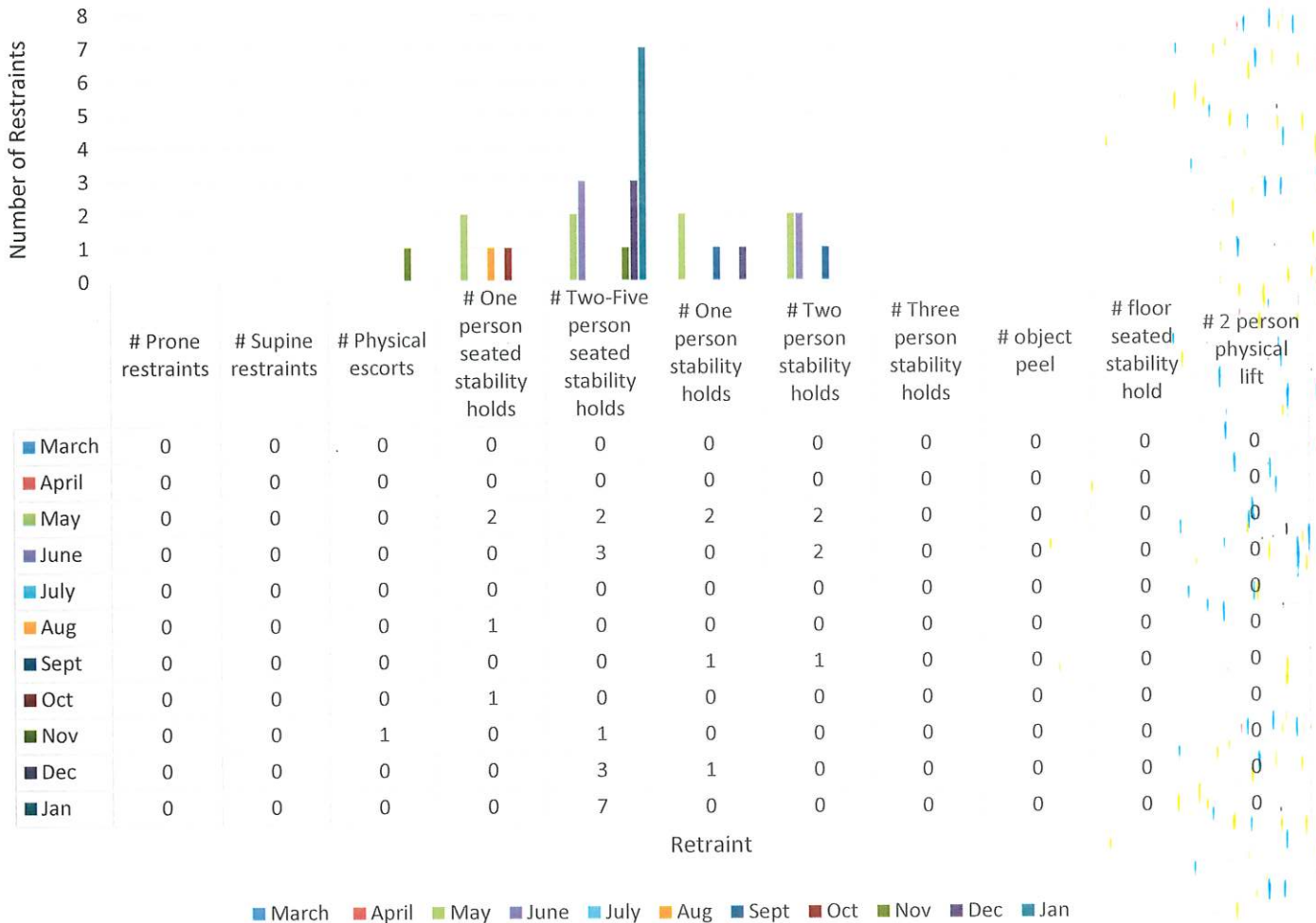
## BD Restraint per Seconds per Month



### DR Chart

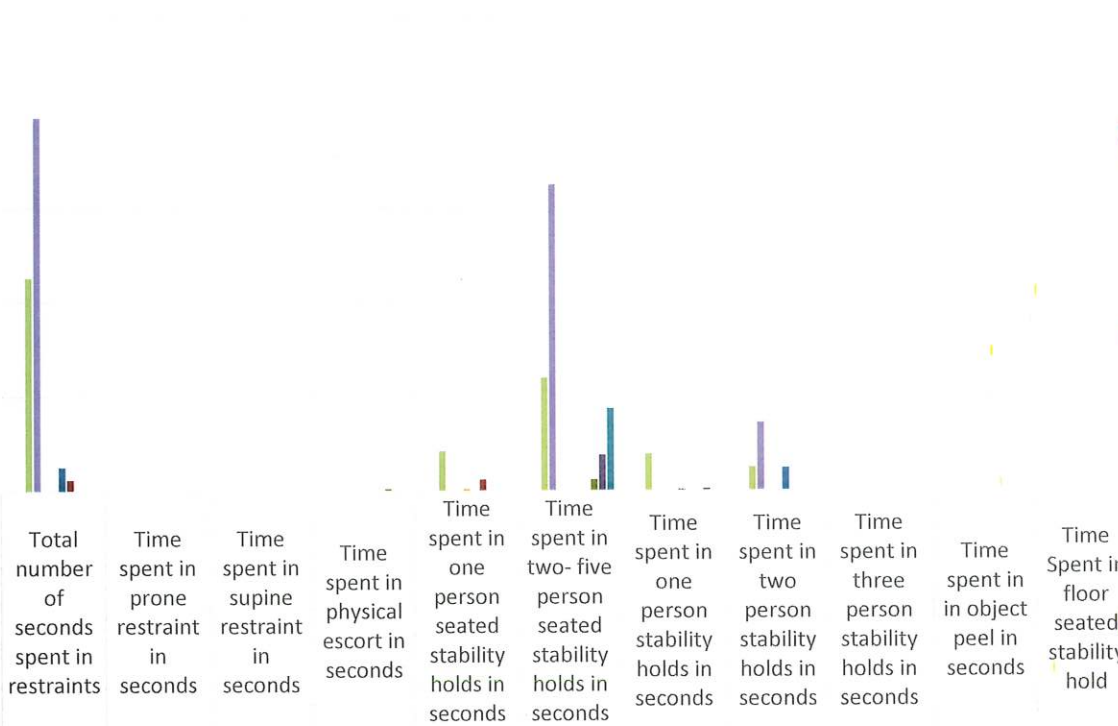


### DR Number of Restraints per Month



## DR Restraint in Seconds per Month

Seconds

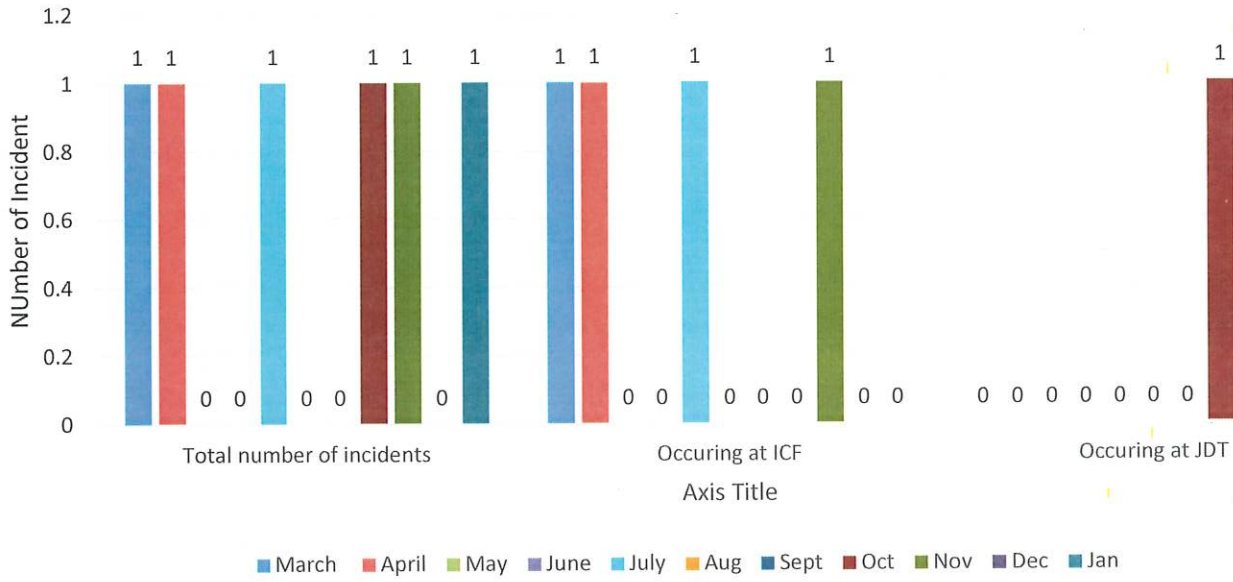


|       |      |   |   |    |     |      |     |     |   |   |   |   |
|-------|------|---|---|----|-----|------|-----|-----|---|---|---|---|
| March | 0    | 0 | 0 | 0  | 0   | 0    | 0   | 0   | 0 | 0 | 0 | 0 |
| April | 0    | 0 | 0 | 0  | 0   | 0    | 0   | 0   | 0 | 0 | 0 | 0 |
| May   | 1130 | 0 | 0 | 0  | 210 | 600  | 195 | 125 | 0 | 0 | 0 | 0 |
| June  | 1980 | 0 | 0 | 0  | 0   | 1620 | 0   | 360 | 0 | 0 | 0 | 0 |
| July  | 0    | 0 | 0 | 0  | 0   | 0    | 0   | 0   | 0 | 0 | 0 | 0 |
| Aug   | 0    | 0 | 0 | 0  | 10  | 0    | 0   | 0   | 0 | 0 | 0 | 0 |
| Sept  | 128  | 0 | 0 | 0  | 0   | 0    | 8   | 120 | 0 | 0 | 0 | 0 |
| Oct   | 60   | 0 | 0 | 0  | 60  | 0    | 0   | 0   | 0 | 0 | 0 | 0 |
| Nov   | 0    | 0 | 0 | 10 | 0   | 60   | 0   | 0   | 0 | 0 | 0 | 0 |
| Dec   | 0    | 0 | 0 | 0  | 0   | 190  | 10  | 0   | 0 | 0 | 0 | 0 |
| Jan   | 0    | 0 | 0 | 0  | 0   | 435  | 0   | 0   | 0 | 0 | 0 | 0 |

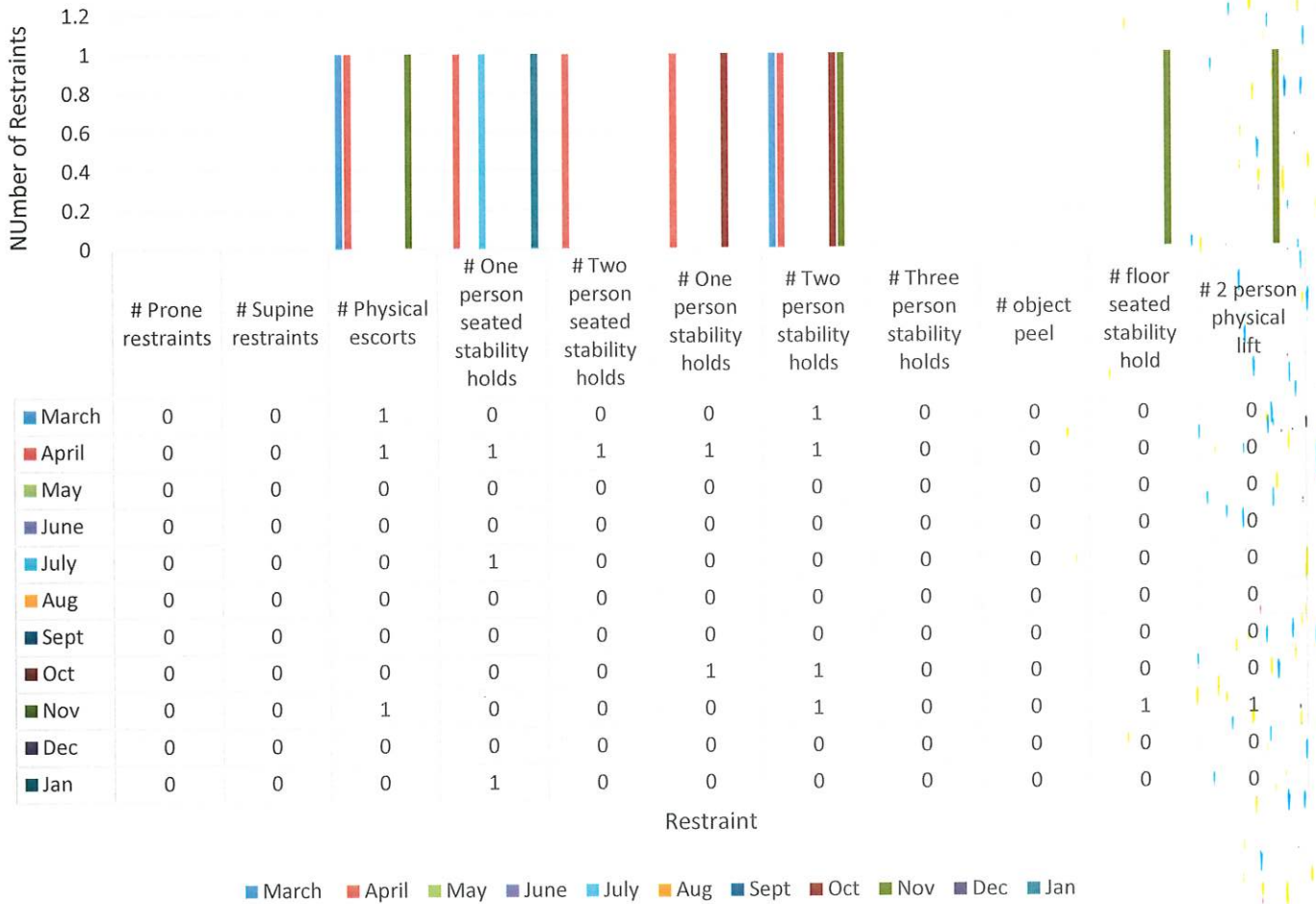
Restraint

■ March 
 ■ April 
 ■ May 
 ■ June 
 ■ July 
 ■ Aug 
 ■ Sept 
 ■ Oct 
 ■ Nov 
 ■ Dec 
 ■ Jan

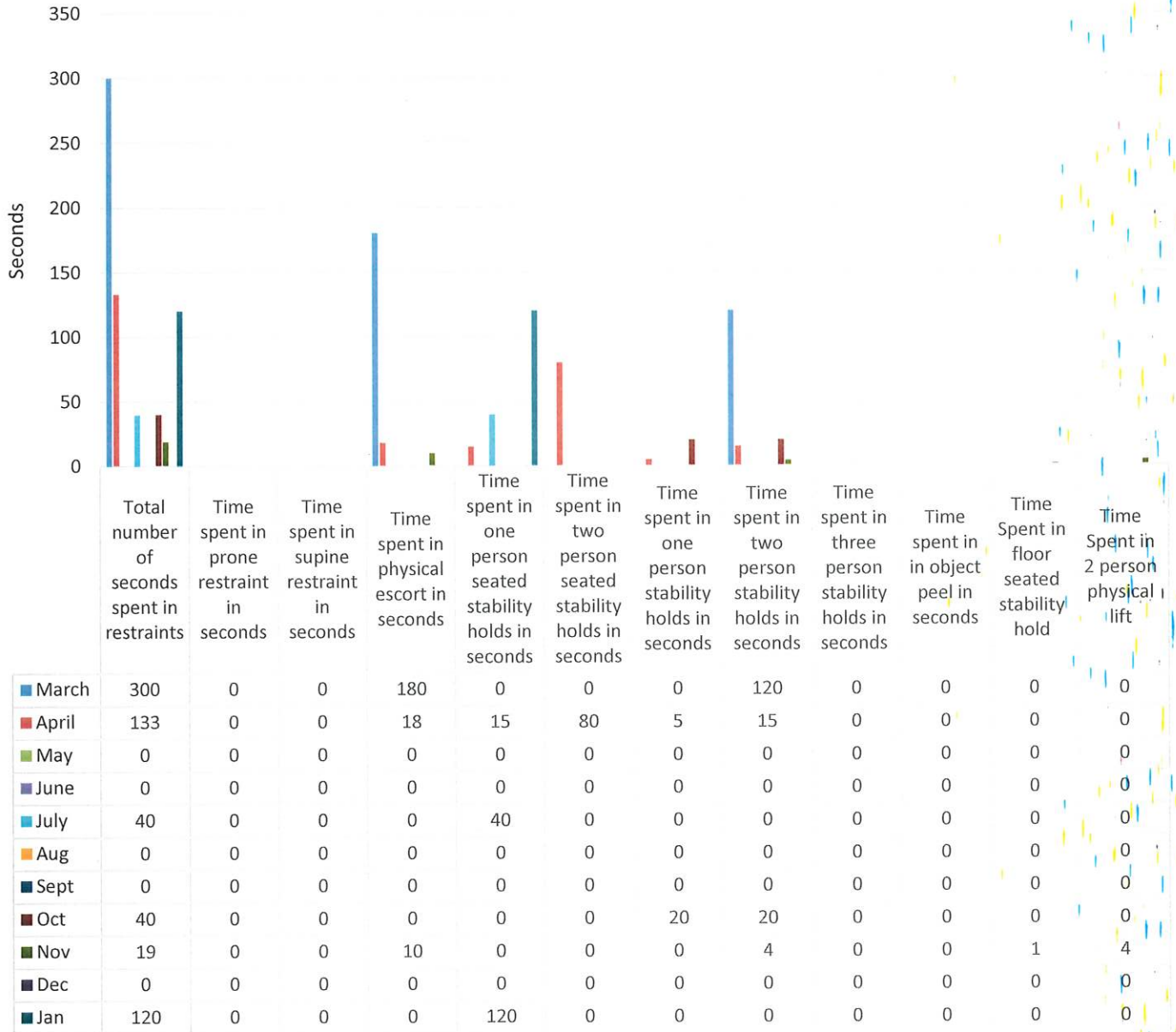
### GB Chart



### GB Number of Restraints per Month



## GB Restraint in Seconds per Month

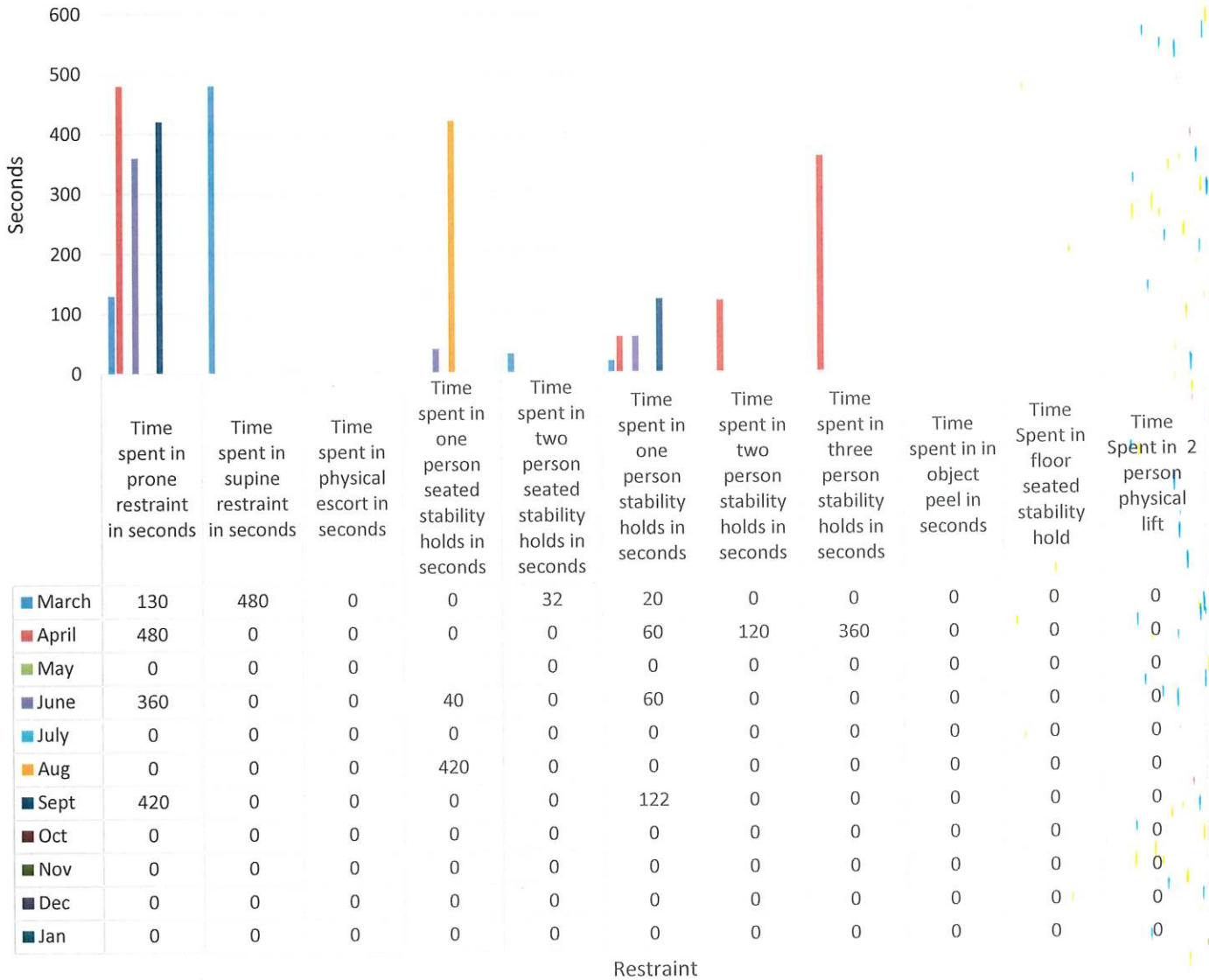


Restraint

■ March 
 ■ April 
 ■ May 
 ■ June 
 ■ July 
 ■ Aug 
 ■ Sept 
 ■ Oct 
 ■ Nov 
 ■ Dec 
 ■ Jan



## KB Restraint in Seconds per Month



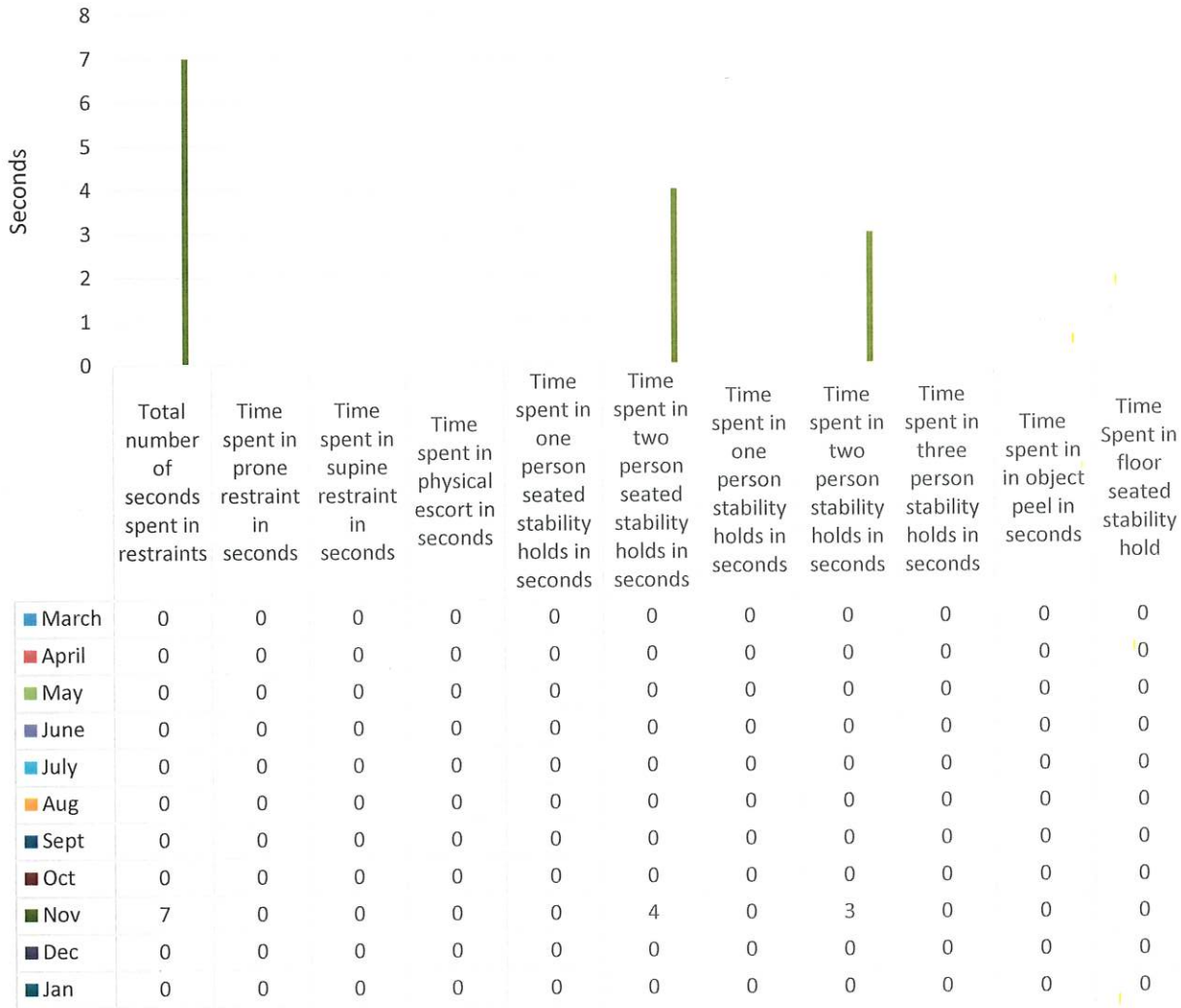
Restraint

■ March 
 ■ April 
 ■ May 
 ■ June 
 ■ July 
 ■ Aug 
 ■ Sept 
 ■ Oct 
 ■ Nov 
 ■ Dec 
 ■ Jan





# KL Restraint in Seconds per Month



Restraint

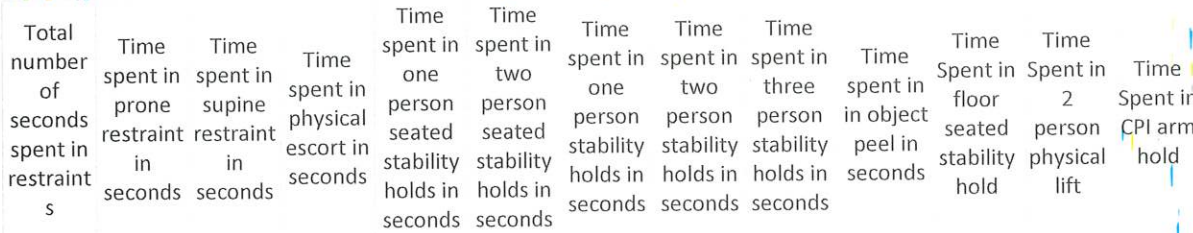
■ March 
 ■ April 
 ■ May 
 ■ June 
 ■ July 
 ■ Aug 
 ■ Sept 
 ■ Oct 
 ■ Nov 
 ■ Dec 
 ■ Jan



# MG Restraint in Seconds per Month

Seconds

160  
140  
120  
100  
80  
60  
40  
20  
0



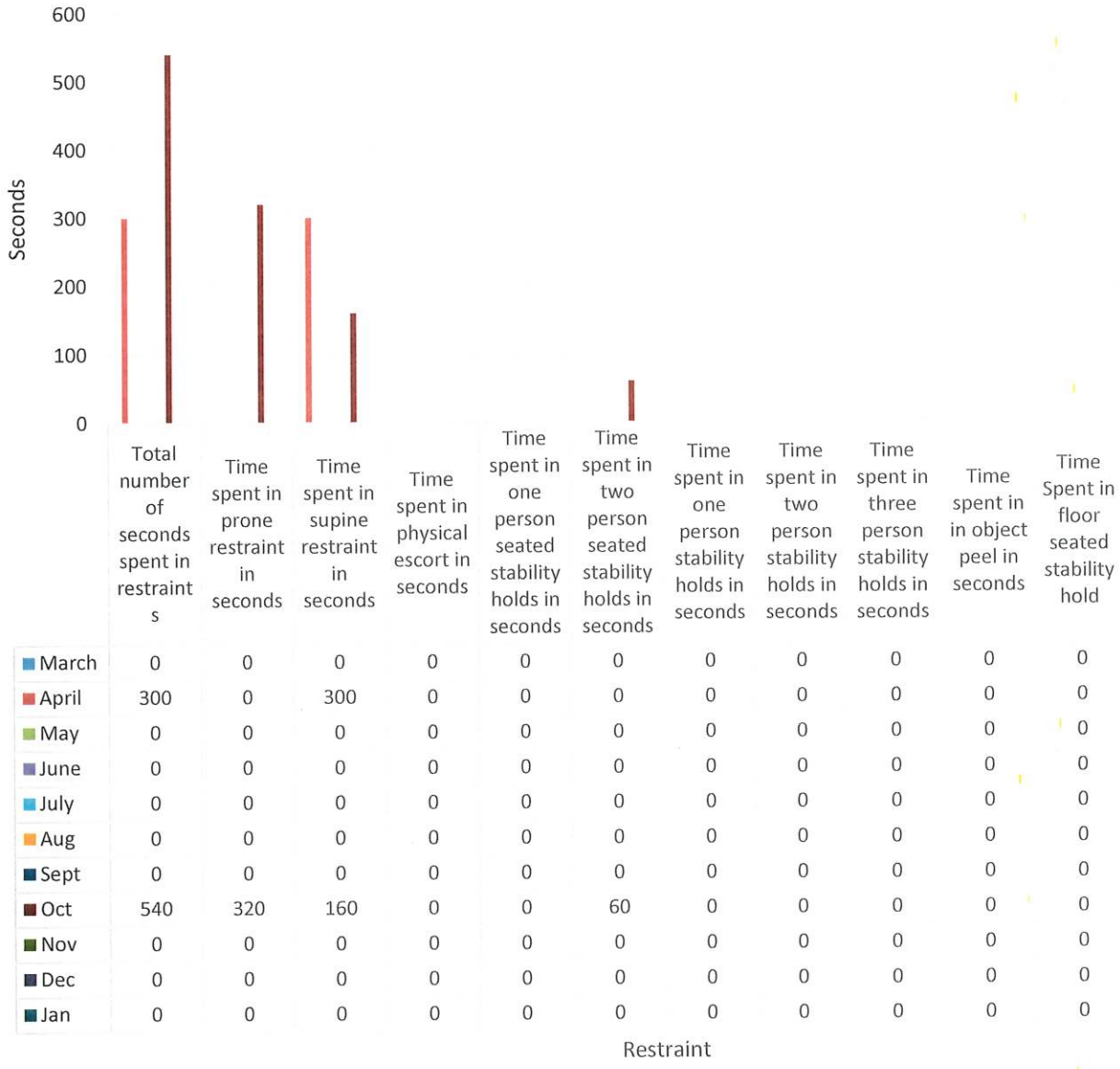
|       | Total number of seconds spent in restraints | Time spent in prone restraint in seconds | Time spent in supine restraint in seconds | Time spent in physical escort in seconds | Time spent in one person seated stability holds in seconds | Time spent in two person seated stability holds in seconds | Time spent in one person stability holds in seconds | Time spent in two person stability holds in seconds | Time spent in three person stability holds in seconds | Time spent in object peel in seconds | Time Spent in floor seated stability hold | Time Spent in 2 person physical lift | Time Spent in CPI arm hold |
|-------|---|--|---|--|--|--|---|---|---|--------------------------------------|---|--------------------------------------|----------------------------|
| March | 0   | 0  | 0   | 0  | 0  | 0  | 0   | 0   | 0   | 0                                    | 0   | 0                                    | 0                          |
| April | 0   | 0  | 0   | 0  | 0  | 0  | 0   | 0   | 0   | 0                                    | 0   | 0                                    | 0                          |
| May   | 20  | 0  | 0   | 0  | 0  | 0  | 0   | 20  | 0   | 0                                    | 0   | 0                                    | 0                          |
| June  | 0   | 0  | 0   | 0  | 0  | 0  | 0   | 0   | 0   | 0                                    | 0   | 0                                    | 0                          |
| July  | 0   | 0  | 0   | 0  | 0  | 0  | 0   | 0   | 0   | 0                                    | 0   | 0                                    | 0                          |
| Aug   | 140   | 0  | 0   | 0  | 0  | 80   | 1   | 0   | 0   | 0                                    | 0   | 0                                    | 0                          |
| Sept  | 0   | 0  | 0   | 0  | 0  | 0  | 0   | 0   | 0   | 0                                    | 0   | 0                                    | 0                          |
| Oct   | 0   | 0  | 0   | 0  | 0  | 0  | 0   | 0   | 0   | 0                                    | 0   | 0                                    | 0                          |
| Nov   | 0   | 0  | 0   | 0  | 0  | 0  | 0   | 0   | 0   | 0                                    | 0   | 0                                    | 0                          |
| Dec   | 31  | 0  | 0   | 0  | 0  | 0  | 0   | 0   | 0   | 0                                    | 0   | 0                                    | 31                         |
| Jan   | 15  | 0  | 0   | 0  | 0  | 0  | 0   | 0   | 0   | 0                                    | 0   | 0                                    | 15                         |

Restraint

March April May June July Aug Sept Oct Nov Dec Jan



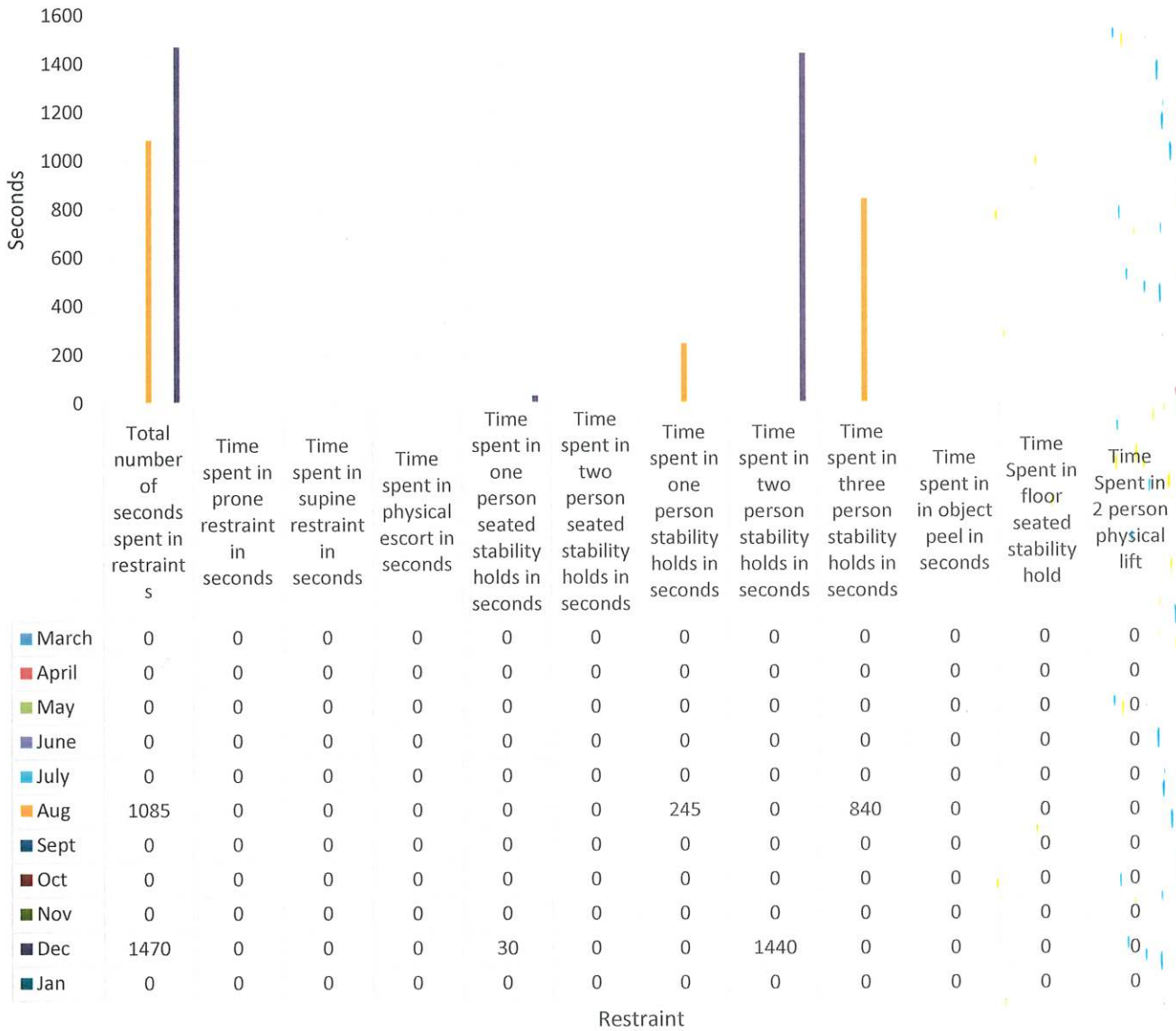
# SC Restraint in Seconds per MOnth



■ March ■ April ■ May ■ June ■ July ■ Aug ■ Sept ■ Oct ■ Nov ■ Dec ■ Jan



## TK Restraint in Seconds per Month



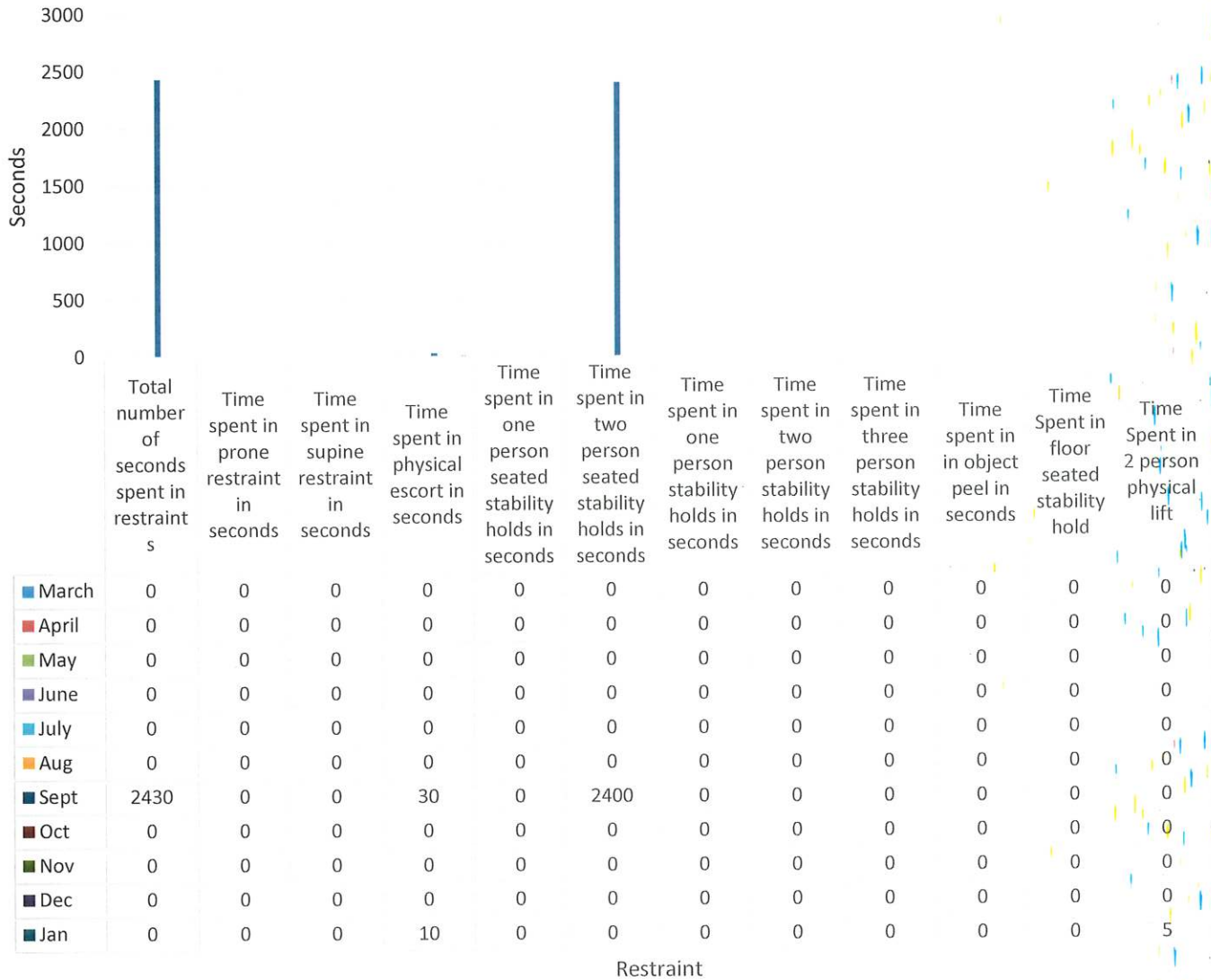
Restraint

■ March 
 ■ April 
 ■ May 
 ■ June 
 ■ July 
 ■ Aug 
 ■ Sept 
 ■ Oct 
 ■ Nov 
 ■ Dec 
 ■ Jan





## WG Restraint in Seconds per Month



■ March 
 ■ April 
 ■ May 
 ■ June 
 ■ July 
 ■ Aug 
 ■ Sept 
 ■ Oct 
 ■ Nov 
 ■ Dec 
 ■ Jan



# ZM Restraint in Seconds per Month

Seconds

70  
60  
50  
40  
30  
20  
10  
0

|  | Total number of seconds spent in restraints | Time spent in prone restraint in seconds | Time spent in supine restraint in seconds | Time spent in physical escort in seconds | Time spent in one person seated stability holds in seconds | Time spent in two person seated stability holds in seconds | Time spent in one person stability holds in seconds | Time spent in two person stability holds in seconds | Time spent in three person stability holds in seconds | Time spent in in object peel in seconds | Time Spent in floor seated stability hold | Time Spent in 2 person physical lift |
|--|---|--|---|--|--|--|---|---|---|---|---|--------------------------------------|
|--|---|--|---|--|--|--|---|---|---|---|---|--------------------------------------|

|       |    |   |   |   |    |   |   |   |   |   |   |   |
|-------|----|---|---|---|----|---|---|---|---|---|---|---|
| March | 0  | 0 | 0 | 0 | 0  | 0 | 0 | 0 | 0 | 0 | 0 | 0 |
| April | 0  | 0 | 0 | 0 | 0  | 0 | 0 | 0 | 0 | 0 | 0 | 0 |
| May   | 0  | 0 | 0 | 0 | 0  | 0 | 0 | 0 | 0 | 0 | 0 | 0 |
| June  | 0  | 0 | 0 | 0 | 0  | 0 | 0 | 0 | 0 | 0 | 0 | 0 |
| July  | 0  | 0 | 0 | 0 | 0  | 0 | 0 | 0 | 0 | 0 | 0 | 0 |
| Aug   | 0  | 0 | 0 | 0 | 0  | 0 | 0 | 0 | 0 | 0 | 0 | 0 |
| Sept  | 0  | 0 | 0 | 0 | 0  | 0 | 0 | 0 | 0 | 0 | 0 | 0 |
| Oct   | 60 | 0 | 0 | 0 | 60 | 0 | 0 | 0 | 0 | 0 | 0 | 0 |
| Nov   | 0  | 0 | 0 | 0 | 0  | 0 | 0 | 0 | 0 | 0 | 0 | 0 |
| Dec   | 0  | 0 | 0 | 0 | 0  | 0 | 0 | 0 | 0 | 0 | 0 | 0 |
| Jan   | 0  | 0 | 0 | 0 | 0  | 0 | 0 | 0 | 0 | 0 | 0 | 0 |

Restraint

March April May June July Aug Sept Oct Nov Dec Jan