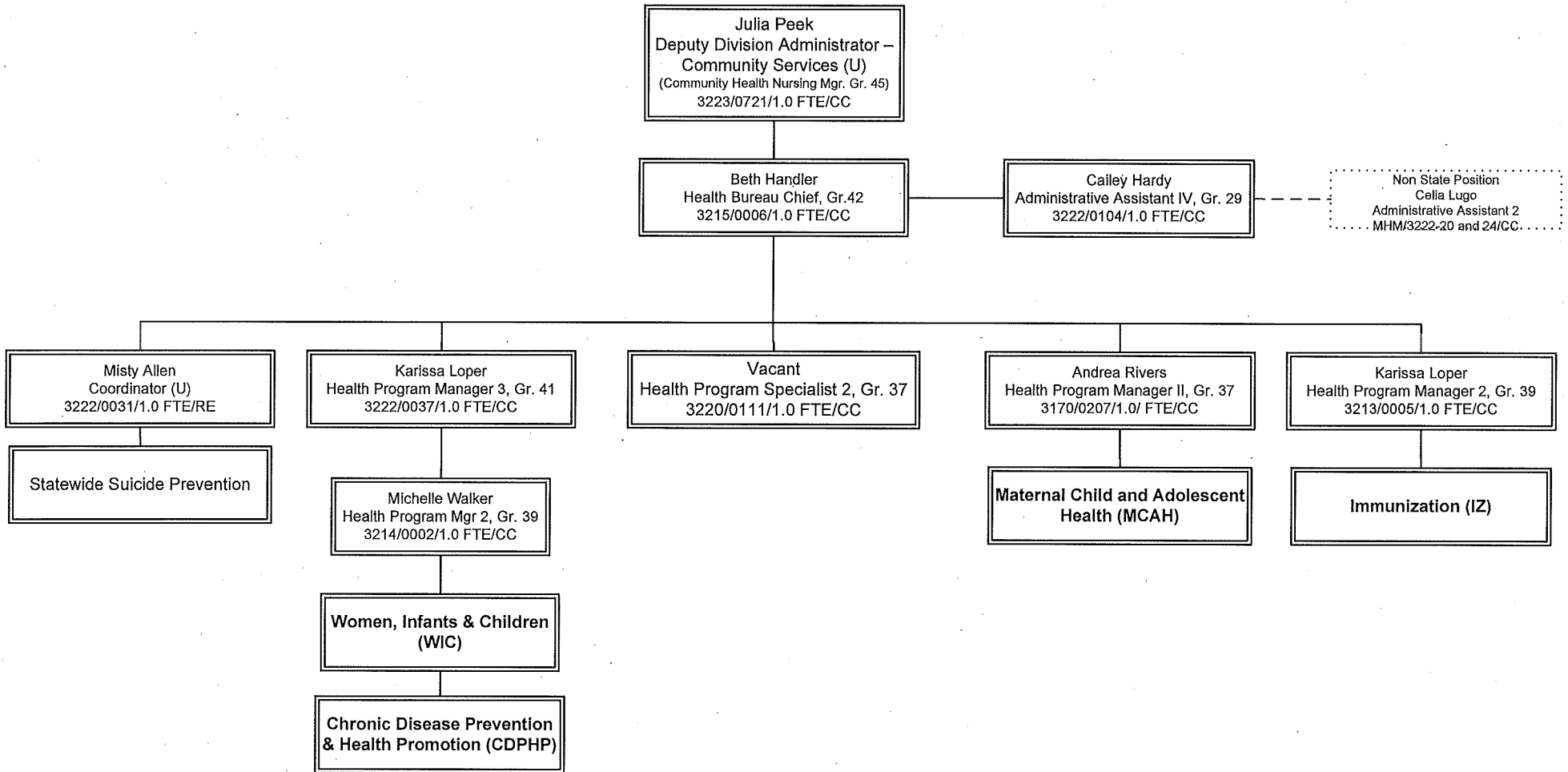


Division of Public & Behavioral Health
 Community Services
 Bureau of Child, Family and Community Wellness
 June, 2017



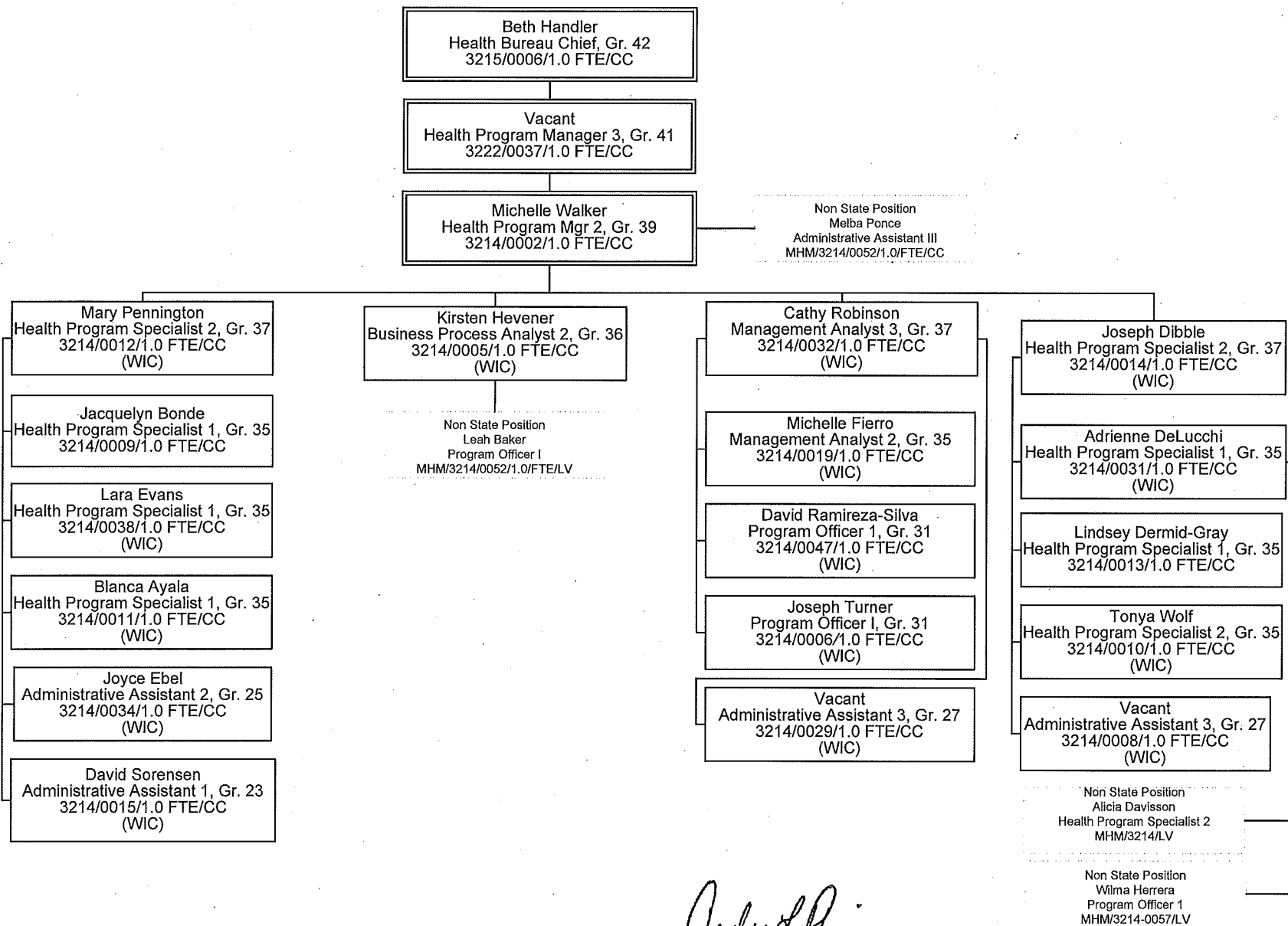
Cody Phinney

 Cody Phinney, Administrator

6-22-17

 Date

Division of Public & Behavioral Health
 Community Services
 Bureau of Child, Family and Community Wellness
 Women, Infants and Children (WIC) Program
 June, 2017



Cody Phinney
 Cody Phinney, Administrator

6-22-17
 Date

Division of Public & Behavioral Health
 Community Services
 Bureau of Child, Family and Community Wellness
 Maternal, Child & Adolescent Health
 June, 2017

Beth Handler
 Health Bureau Chief, Gr. 42
 3215/0006/1.0 FTE/CC

Vickie Ives
 Health Program Mgr 2, Gr. 39
 3222/0052/1.0 FTE/CC

Deborah Tom
 Administrative Asst. 3 Gr. 27
 3222/0055/1.0 FTE/CC
 (MCAH)

Misty Allen
 Statewide Suicide Prevention
 Coordinator (U)
 3222/0031/1.0 FTE/RE

Richard Egan
 Statewide Suicide Prevention
 Trainer Fac. (U)
 3222/0030/1.00 FTE/LV

Non State Position
 Floreece Bolden
 AWARE Admin Assistant
 Manpower/3222-0019/CC
 BCFCW/Suicide Prev

Angela Friedman
 Administrative Assistant 4, Gr. 29
 3222/0033/1.0 FTE/RE

Janett Massolo
 Statewide Suicide Prevention
 Trainer Fac. (U)
 3222/0032/1.0 FTE/RE

Eileen Hough
 Health Program Specialist 1, Gr. 35
 3222/0063/1.0 FTE (CC)
 (Metabolic)

Non State Position
 Andrea Skewers
 Health Program Specialist 1
 MHM3222/CC
 PREP

Non State Position
 Sarah Demuth
 Program Officer 2
 MHM/3222/CC
 PREP/Abstinence

Margot Chappel
 Health Program Mgr 1, Gr. 37
 3222/0114/1.0 FTE /CC
 (MCH)

Christina Turner
 Health Program Specialist 1, Gr. 35
 3222/0103/1.0 FTE/CC
 (Maternal & Infant)

Deborah Duchesne
 Health Program Specialist 1, Gr. 35
 3222/0066/1.0 FTE/CC
 (MCH/RPE)

Brian DeValliere
 Health Program Specialist 2, Gr. 35
 3222/0071/1.0 FTE (CC)
 (MCH-EPI)

Kristine Hughes
 Management Analyst 2 Gr. 35
 3222/0503/1.0 FTE/CC
 (MCH-Fiscal)

Evelyn Dryer
 Health Program Specialist 2 Gr 37
 3222/0515/1.0/FTE/CC
 Home Visiting

Charlotte Andreasen
 Health Program Specialist 1 Gr 35
 3222/0508/1.0/FTE/CC
 Home Visiting

Melissa Madera
 Health Program Specialist II Gr 35
 3222/0509/1.0/FTE/CC
 Home Visiting

Jennifer Quihuis
 Management Analyst 2 Gr 35
 3222/0510/1.0/FTE/CC

Vacant
 Administrative Assistant I Gr. 23
 3222/0511/1.0 FTE (CC)
 Home Visiting

Perry Smith
 Health Program Specialist 1, Gr. 35
 3222/0070/1.0 FTE/CC
 (NBS-NBHS)

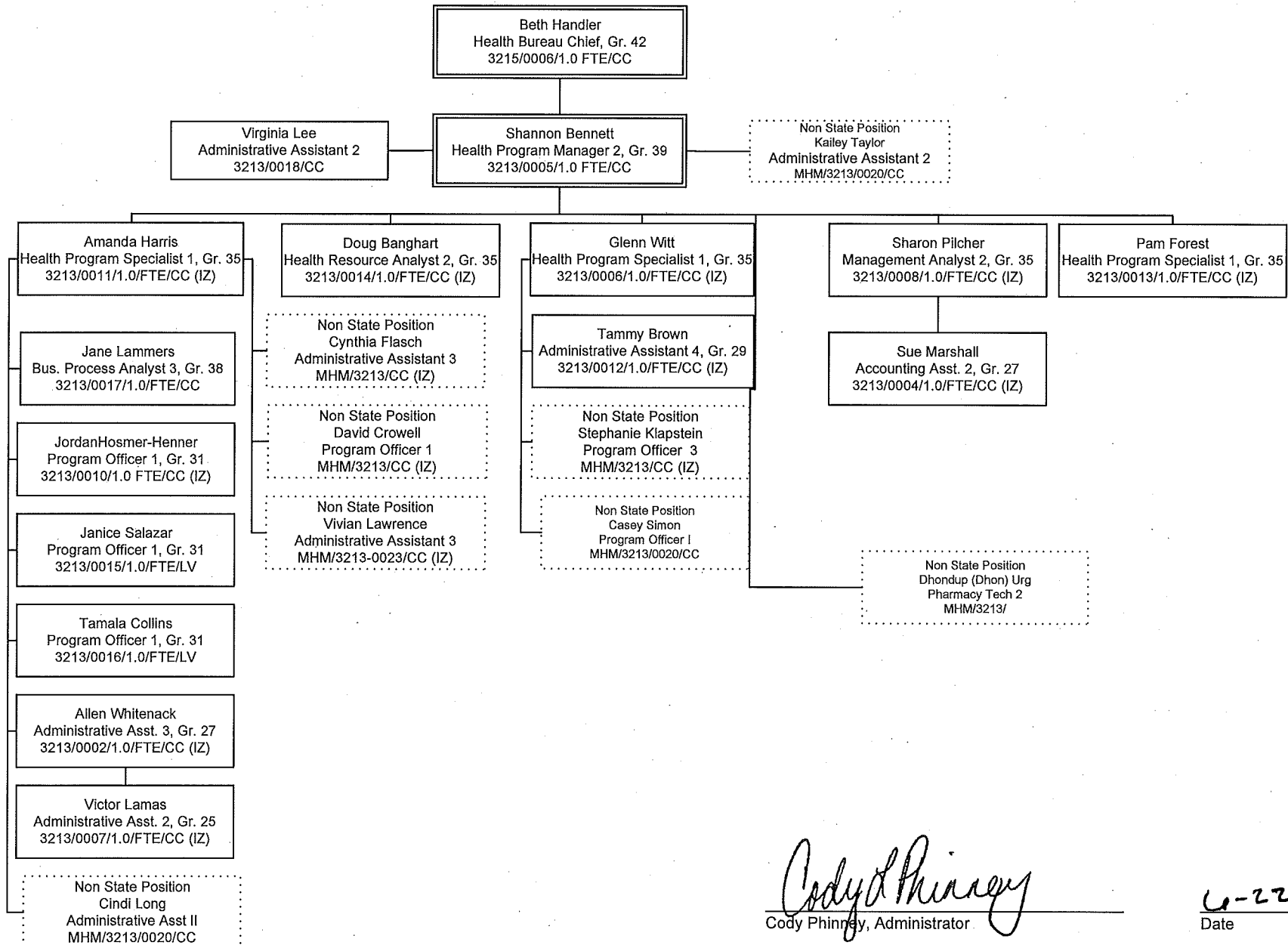
Michelle Friend
 Administrative Asst. 2, Gr. 25
 3222/0506/1.0 FTE/CC
 (NBS-NBHS)

Non State Position
 Karli Dodge
 Health Resiurce Analyst I
 MHM3222/CC

Cody Phinney
 Cody Phinney Administrator

6-22-17
 Date

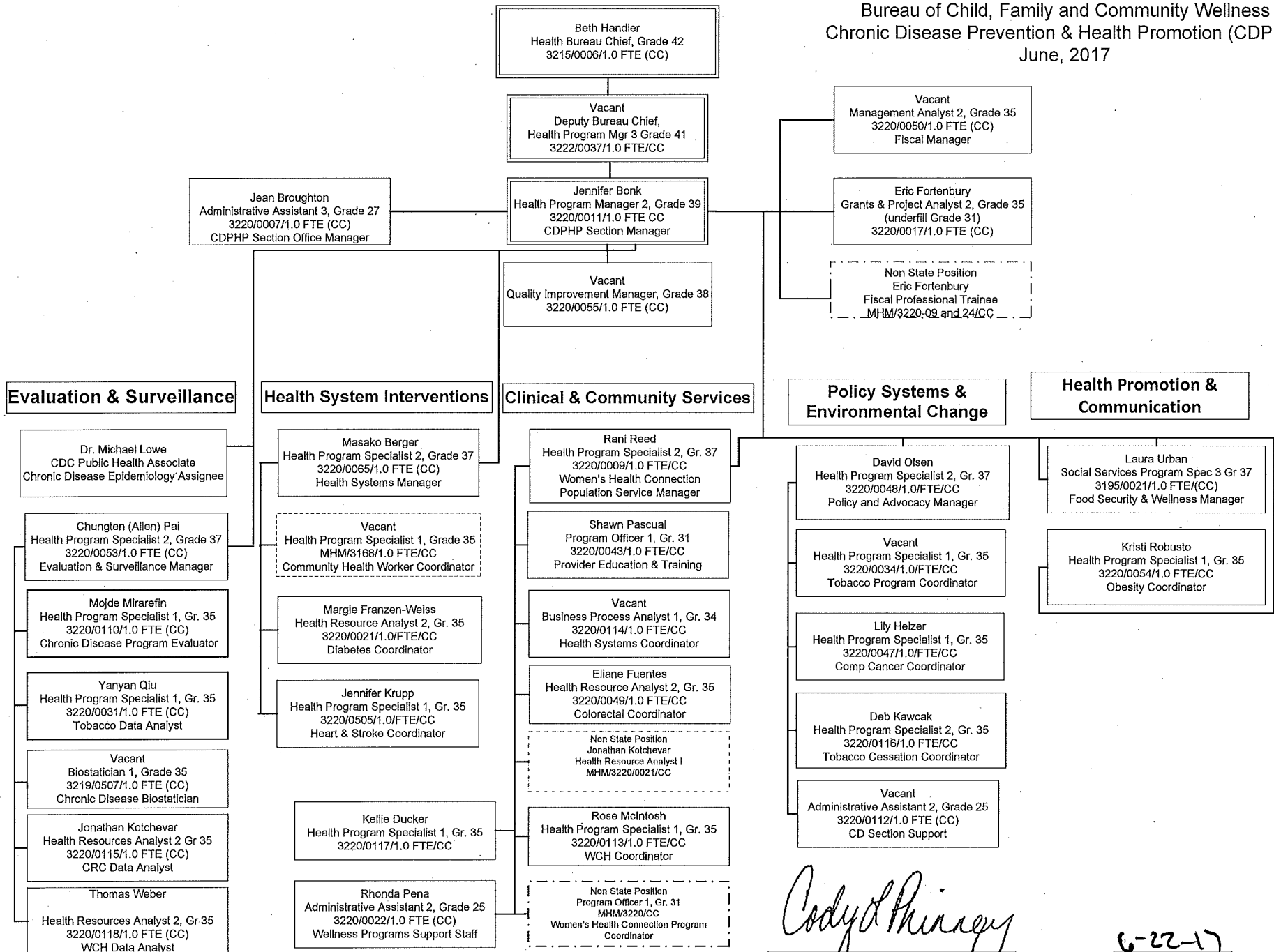
Division of Public & Behavioral Health
 Community Services
 Bureau of Child, Family and Community Wellness
 Immunization Program
 June, 2017



Cody Phinney
 Cody Phinney, Administrator

6-22-17
 Date

Division of Public & Behavioral Health
Community Services
Bureau of Child, Family and Community Wellness
Chronic Disease Prevention & Health Promotion (CDPHP)
June, 2017



Cody Phinney
Cody Phinney, Administrator

6-22-17
Date