

Non State Position  
Diane Allen  
Health Facilities Inspection Manager RN  
MHM/3216/CC

Paul Shubert  
Health Bureau Chief, Gr 42  
3216/0033/1.0 FTE/CC

Leticia Metherell  
Health Program Manager 3, Gr 41  
3216/0002/1.0 FTE/LV

Division of Public & Behavioral Health  
Regulatory & Planning Services  
Health Care Quality and Compliance  
Inspections Management/Complaint Investigations  
June, 2017

Amir Bringard  
Health Fac. Insp. Manager, Gr 38  
3216/0132/1.0 FTE/LV

Steven Gerleman  
Health Fac. Insp. Mgr, Gr 38  
3216/0130/1.0 FTE/LV

M. Jeanne Hesterlee  
Health Fac. Insp. Mgr - RN, Gr 40  
3216/0020/1.0 FTE/CC

Dorothy Sims  
Health Fac. Insp. Mgr RN, Gr 40  
3216/0001/1.0 FTE/LV

Patti Elkins  
Health Fac. Insp. Mgr - RN, Gr 40  
3216/0008/1.0 FTE/CC

Minou Nelson  
HFI 3, Gr 36  
3216/0402/1.0 FTE/LV

Vacant  
Health Fac. Insp. 2 Gr 35  
3216/0051/1.0 FTE/LV

Esther Ortega  
Health Fac. Insp. 2 Gr 35  
(underfill H/HSPT Gr 30)  
3216/0418/1.0 FTE/CC

Kristina Leopard  
Health Fac. Insp. 2 Gr 35  
3216/0093/1.0 FTE/LV

Vacant  
Health Fac. Insp. 2 Gr 35  
3216/0419/1.0 FTE/LV

Non State Position  
Kyle Parkson  
UNL Investigator  
MHM/3216/LV

Jennifer Dunaway  
HFI 3 Gr 36  
3216/0044/1.0 FTE/LV

Vacant  
HFI 2 RN Gr 37  
3216/0404/1.0 FTE/LV

Vacant  
HFI 2 - RN Gr 37  
3216/0043/1.0 FTE/LV

Marian Niedrauer  
HFI 2 - RN, Gr 37  
3216/0034/1.0 FTE/LV

Vacant  
HFI 2 - RN, Gr 37  
3216/0035/1.0 FTE/LV

Vacant  
HFI 2 - RN, Gr 37  
3216/0406/1.0 FTE/LV

Vacant  
Health Fac. Insp. 2 Gr 35  
(underfill HFI 2, Gr 32)  
3216/0411/1.0 FTE/LV

Penny Orr  
Health Fac. Insp. 2 RN, Gr 37  
3216/0122/1.0 FTE/LV

Moises Gomez Rivas  
Health Fac. Insp 2-RN Gr 37  
3216/0091/1.0 FTE/LV

Leah Arvidson  
HFI 3 Supervisor Gr 36  
3216/0041/1.0 FTE/LV

Robert Cain  
Health Fac. Insp. 2 Gr 35  
3216/0120/1.0 FTE/CC

John Gemar  
Health Fac. Insp. 2 Gr 35  
3216/0042/1.0 FTE/LV

Anne Meyer  
Health Fac. Insp. 2 Gr 35  
3216/0059/1.0 FTE/LV

Gerardo Caudal  
HFI 3 RN Gr 38  
3216/0076/1.0 FTE/LV

Vacant  
Health Fac. Insp 2 Gr 35  
3216/0048/1.0 FTE/CC

Vacant  
HFI 2 RN, Gr 37  
3216/0138/1.0 FTE/LV

Galy Schoenlein  
HFI 2 - RN, Gr 37  
3216/0092/1.0 FTE/LV

Vickie Estes  
Health Fac. Insp. 3 Gr 36  
3216/0036/1.0 FTE/CC

Bradley Waples  
Health Fac. Insp. 2 Gr 35  
3216/0045/1.0 FTE/LV

Doris Litman  
Health Fac. Insp. 2 Gr 35  
3216/0005/1.0 FTE/LV

Emma Duarte  
Health Fac. Insp. 2 Gr 35  
3216/0412/1.0 FTE/CC

Connie Stein  
Health Fac. Insp. 2 Gr 35  
3216/0415/1.0 FTE/LV

Non State Position  
Evelyn Sayre  
Health Fac. Insp. 2 MedLab  
MHM/3216/LV

Viva Wells  
HFI 3 - RN, Gr 38  
3216/0026/1.0 FTE/LV

Pamela Ross  
HFI 2 Gr 35  
3216/0080/1.0 FTE/LV

Vacant  
Health Fac. Insp 2-RN  
Gr 37  
3216/0058/1.0 FTE/LV

Eutemia Quiday-Richman  
Health Fac. Insp 2-RN  
Gr 37  
3216/0079/1.0 FTE/CC

Deborah Denson  
Health Fac. Insp 2-RN  
Gr 37  
3216/0409/1.0 FTE/CC

Yolanda Simsgallo  
Health Fac. Insp. 2 Gr 35  
3216/0098/1.0 FTE/LV

Sherry Crance  
HFI 3 - RN, Gr 38  
3216/0102/1.0 FTE/CC

Vacant  
HFI 2-RN, Gr 37  
3216/0050/1.0 FTE/CC

Niculina Popa  
HFI 2 RN Gr 37  
3216/0123/1.0 FTE/CC

Vacant  
Health Fac. Insp 2-RN  
Gr 37  
3216/0027/1.0 FTE/LV

Shirley Rains  
HFI Trainee, Gr 37  
3216/0038/1.0 FTE/CC

Renee Burch  
HFI 2-RN Gr 37  
3216/0101/0.5 FTE/CC

Sonja Cook  
HFI 2-RN, Gr 35  
3216/0143/1.0 FTE/CC

Non State Position  
Nadine Howard  
Health Fac. Insp 2 RN  
MHM/CC

Ellen Clark  
Health Fac. Insp. 3 - RN, Gr 38  
3216/0040/1.0 FTE/CC

Jeffrey Caine  
Health Fac. Insp. 2 - RN, Gr 37  
3216/0031/1.0 FTE/LV

Anchita Panganiban  
Health Fac. Insp. 2 - RN, Gr 37  
3216/0408/1.0 FTE/LV

Maria Victoria Lokke  
Health Fac. Insp. 2 - RN, Gr 37  
3216/0140/1.0 FTE/LV

Vacant  
Health Fac. Insp. 2 - RN, Gr 37  
3216/0124/1.0 FTE/LV

Grant Maher  
Health Fac. Insp 2-RN Gr 37  
3216/0097/1.0 FTE/CC

Donald Sampson  
HFI 3 Gr 36  
3216/0403/1.0 FTE/LV

Michael Kupper  
Health Fac. Insp. 2 Gr 35  
3216/0006/1.0 FTE/CC

Juanamarie Harris  
Health Fac. Insp. 2 Gr 35  
3216/0421/1.0 FTE/LV

Ashley Riedy  
Health Fac. Insp. 2 Gr 35  
3216/0135/1.0 FTE/LV

Jeremy Lovell  
HFI 1, Gr 35  
3216/0414/1.0 FTE/CC

Johna Thacker  
Health Fac. Insp. 2 Gr 35  
3216/0142/1.0 FTE/LV

Maria Lingat-Collier  
Health Fac. Insp. 2 Gr 35  
3216/0407/1.0 FTE/LV

Sheri Abell  
Health Fac. Insp. 2 Gr 35  
3216/0417/1.0 FTE/LV

Terri Henwood  
Health Fac. Insp. 2 Gr 35  
3216/0410/1.0 FTE/LV

HFI = Health Facilities Inspection

*Cody Phinney*  
Cody Phinney, Administrator

6-22-17  
Date

Division of Public & Behavioral Health  
 Regulatory & Planning Services  
 Health Care Quality and Compliance  
 Administration  
 June, 2017

Joe Pollock  
 Deputy Division Administrator (U)  
 3223/0007/1.0 FTE/CC

Paul Shubert  
 Health Bureau Chief, Gr 42  
 3216/0033/1.0 FTE/CC

Leticia Metherell  
 Health Program Manager 3, Gr 41  
 3216/0002/1.0 FTE/LV

**Fiscal**

Lawrence Stanton  
 Management Analyst 2, Gr 35  
 3216/0423/1.0 FTE/CC  
 Fiscal

Michelle Bonnano  
 Fiscal Business Prof. Trainee  
 Gr 31  
 3216/0145/1.0 FTE/CC  
 Fiscal

Robert Renaud  
 Administrative Assistant 2, Gr 25  
 3216/0075/1.0 FTE/CC  
 Fiscal

**Office Management**

Tammy Carney  
 Administrative Assistant 4, Gr 29  
 3216/0003/1.0 FTE/LV

Kaitlyn Burnett  
 Administrative Assistant 1, Gr 23  
 3216/0007/1.0 FTE/CC

Betsy Greenspan  
 Administrative Assistant 3, Gr 27  
 3216/0148/1.0 FTE/CC

Non State Position  
 Sherrie Winkler  
 Administrative Assistant I  
 Manpower/3216/CC

Non State Position  
 Nenita Wasserman  
 Administrative Assistant IV  
 Manpower/3216/0004(CC)

M. Jeanne Hesterlee  
 Health Fac. Insp. Manager RN, Gr 40  
 3216/0020/1.0 FTE/CC

**CMS Medical Facilities/  
 Inspection Management/  
 Complaint Investigations**

Anna Lisa Acoste  
 Health Fac. Insp. 3 - RN, Gr 38  
 3216/0137/1.0 FTE/CC

Sherry Crance  
 Health Fac. Insp. 3 - RN, Gr 38  
 3216/0102/1.0 FTE/CC

Devonne Johannessen  
 Fiscal Business Prof Trainee Gr.31  
 3216/0054/1.0 FTE/CC

Michelle Smothers  
 Administrative Assistant 3, Gr 27  
 3216/0039/1.0 FTE/CC

Kali Moriarty  
 Administrative Assistant 3, Gr 27  
 3216/0074/1.0 FTE/CC

**CMS Systems  
 Management**

Carol Eastburg  
 HFI II-RN-Gr 37  
 3216/0405/1.0 FTE/CC

Mike Guzzetta  
 IT Professional 2, Gr 37  
 3216/0077/1.0 FTE/CC

Steve Gerleman  
 Health Fac. Insp. Manager, Gr 38  
 3216/0130/1.0 FTE/LV

**State Medical Facilities  
 Inspection Management/  
 Complaint Investigations**

**Environmental Health**

Vincent Vallente  
 Envir. Health Specialist 3, Gr 36  
 3216/0080/1.0 FTE/CC

Dominick DiFranco  
 Envir. Health Specialist 3, Gr 36  
 3216/0081/1.0 FTE/LV

Vacant  
 Administrative Assistant 3, Gr 27  
 3216/0062/1.0 FTE/LV  
 Complaint Intake

Claudia Dye  
 Administrative Assistant 2, Gr 25  
 3216/0032/1.0 FTE/LV

Selena Gray  
 Administrative Assistant 2, Gr 25  
 3216/0110/1.0 FTE/LV

Pamela Carter  
 Administrative Assistant 2, Gr 25  
 3216/0413/1.0 FTE/LV

Amir Bringard  
 Health Fac. Insp. Manager, Gr 38  
 3216/0132/1.0 FTE/LV

**Non-Medical Facilities  
 Inspection Management/  
 Complaint Investigations/  
 Complaint Intake**

Vacant  
 HFI 3-RN, Gr 38  
 3216/0076/1.0 FTE/LV

Crystal Blackeye  
 Administrative Assistant 2, Gr 25  
 3216/0096/1.0 FTE/CC

Chanel Gafford  
 Administrative Assistant 4, Gr 29  
 3216/0012/1.0 FTE/CC

Mary Benson  
 Administrative Assistant 2, Gr 25  
 3216/0416/0.51 FTE/LV(.51%)

Vacant  
 Administrative Assistant 1, Gr 23  
 3216/0053/1.0 FTE/LV

Non State Position  
 Dolores Montoya  
 Administrative Assistant 2  
 Apple 1/3216/LV

Dorothy Sims  
 Health Fac. Insp. Manager-RN, Gr 40  
 3216/0001/1.0 FTE/LV

**Quality Improvement  
 Management**

**Training**

Ellen Clark  
 HFI 3-RN, Gr 38  
 3216/0040/1.0 FTE/LV

Donald Sampson  
 HFI 3, Gr 36  
 3216/0403/1.0 FTE/LV

Patti Elkins  
 Health Fac. Insp. Manager - RN, Gr 40  
 3216/0008/1.0 FTE/CC

**Medical Laboratories  
 Inspection Management/  
 Complaint Investigations**

Vickie Estes  
 Health Fac. Insp 3 Gr 36  
 3216/0036/1.0 FTE/CC

Michele Young  
 Administrative Assistant 3, Gr 27  
 3216/0149/1.0 FTE/CC

Christie Casey  
 Administrative Assistant 3, Gr 27  
 3216/0070/1.0 FTE/CC

Shannon Stodieck  
 Administrative Assistant 2, Gr 25  
 3216/0037/1.0 FTE/CC

**Background Checks**

Todd South  
 Admin Assist 2 Gr 25  
 3216/0112/1.0 FTE/CC

Non State Position  
 Tuhin Verma  
 Project Manager  
 MSA/3216/CC

**Dietitians/Music  
 Therapists**

Nikki Feister  
 Admin Assist 3 Gr 27  
 3216/0013/1.0 FTE/CC

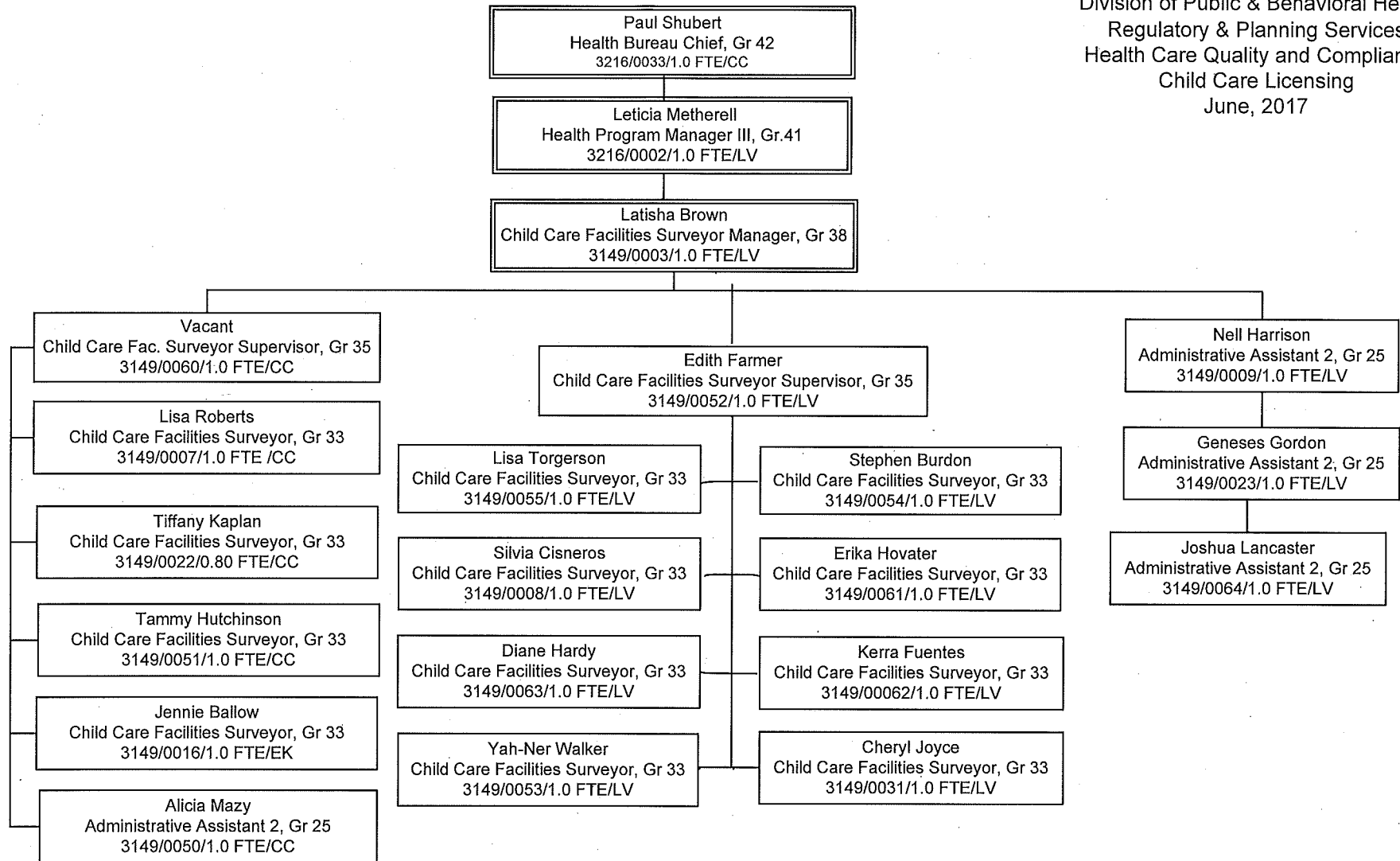
**Education and  
 Information**

Nathan Orme  
 Education & Information  
 Officer, Gr 35  
 3218/0020/1.0 FTE/CC

*Cody Phinney*  
 Cody Phinney, Administrator

6-22-17  
 Date

Division of Public & Behavioral Health  
 Regulatory & Planning Services  
 Health Care Quality and Compliance  
 Child Care Licensing  
 June, 2017



*Cody Phinney*  
 Cody Phinney, Administrator

6-22-17  
 Date