

Division of Public & Behavioral Health
 Regulatory & Planning Services
 Health Care Quality and Compliance
 Inspections Management/Complaint Investigations
 September, 2018

Paul Shubert
 Health Bureau Chief, Gr 42
 3216/0033/1.0 FTE/CC

Leticia Metherell
 Health Program Manager 3, Gr 41
 3216/0002/1.0 FTE/LV

Amir Bringard
 Health Fac. Insp. Manager, Gr 38
 3216/0132/1.0 FTE/LV

Steven Gerleman
 Health Fac. Insp. Mgr, Gr 38
 3216/0130/1.0 FTE/LV

M. Jeanne Hesterlee
 Health Fac. Insp. Mgr – RN, Gr 40
 3216/0020/1.0 FTE/CC

Dorothy Sims
 Health Fac. Insp. Mgr RN, Gr 40
 3216/0001/1.0 FTE/LV

Patti Ekins
 Health Fac. Insp. Mgr – RN, Gr 40
 3216/0008/1.0 FTE/CC

Minou Nelson
 HFI 3, Gr 36
 3216/0402/1.0 FTE/LV

Vacant
 Health Fac. Insp. 2 Gr 35
 3216/0051/1.0 FTE/LV

Vacant
 Health Fac. Insp. 2 Gr 35
 3216/0418/1.0 FTE/CC

Vacant
 Health Fac. Insp. 2 Gr 35
 3216/0093/1.0 FTE/LV

Vacant
 Health Fac. Insp. 2 Gr 35
 3216/0419/1.0 FTE/LV

Sheri Abell
 Health Fac. Insp. 2 Gr 35
 3216/0417/1.0 FTE/LV

Non State Position
 Kyle Parkson
 UNL Investigator
 MHM/3216/LV

Jennifer Dunaway
 HFI 3 Gr 36
 3216/0044/1.0 FTE/LV

Vacant
 HFI 2 - RN Gr 37
 3216/0404/1.0 FTE/LV

Michael Leon
 HFI 2 - RN Gr 37
 3216/0043/1.0 FTE/LV

Marian Niedrauer
 HFI 2 – RN, Gr 37
 3216/0034/1.0 FTE/LV

Vacant
 HFI 2 – RN, Gr 37
 3216/0035/1.0 FTE/LV

Vacant
 HFI 2 – RN, Gr 37
 3216/0406/1.0 FTE/LV

Victoria Sepdc
 Health Fac. Insp. 2 Gr 35
 3216/0411/1.0 FTE/LV

Penny Orr
 HFI 2 - RN, Gr 37
 3216/0122/1.0 FTE/LV

Mises Gomez Rivas
 HFI 2 - RN Gr 37
 3216/0091/1.0 FTE/LV

Leah Arvidson
 HFI 3 Supervisor Gr 36
 3216/0041/1.0 FTE/LV

Robert Cain
 Health Fac. Insp. 2 Gr 35
 3216/0120/1.0 FTE/CC

John Cemar
 Health Fac. Insp. 2 Gr 35
 3216/0042/1.0 FTE/LV

Anne Meyer
 Health Fac. Insp. 2 Gr 35
 3216/0059/1.0 FTE/LV

Gerardo Caudal
 HFI 3 RN Gr 38
 3216/0076/1.0 FTE/LV

Vacant
 Health Fac. Insp 2 Gr 35
 3216/0048/1.0 FTE/CC

Anna Mae DeLeon
 HFI 2 RN, Gr 37
 3216/0138/1.0 FTE/LV

Galyn Schoenstein
 HFI 2 – RN, Gr 37
 3216/0092/1.0 FTE/LV

Vickie Estes
 Health Fac. Insp. 3 Gr 36
 3216/0036/1.0 FTE/CC

Bradley Waples
 Health Fac. Insp. 2 Gr 35
 3216/0045/1.0 FTE/LV

Doris Litman
 Health Fac. Insp. 2 Gr 35
 3216/0005/1.0 FTE/LV

Emma Duarte
 Health Fac. Insp. 2 Gr 35
 3216/0412/1.0 FTE/CC

Connie Stein
 Health Fac. Insp. 2 Gr 35
 3216/0415/1.0 FTE/LV

Non State Position
 Evelyn Sayre
 Health Fac. Insp 2 MedLab
 MHM/3216/LV

Viva Wells
 HFI 3 – RN, Gr 38
 3216/0026/1.0 FTE/LV

Pamela Ross
 HFI 2 Gr 35
 3216/0060/1.0 FTE/LV

Vacant
 Health Fac. Insp 2-RN
 Gr 37
 3216/0058/1.0 FTE/LV

Eulemia Quiday-Richman
 Health Fac. Insp 2-RN
 Gr 37
 3216/0079/1.0 FTE/CC

Deborah Denson
 Health Fac. Insp 2-RN
 Gr 37
 3216/0409/1.0 FTE/CC

Yolanda Sinisgallo
 Health Fac. Insp. 2 Gr 35
 3216/0098/1.0 FTE/LV

Sherry Cranoe
 HFI 3 – RN, Gr 38
 3216/0102/1.0 FTE/CC

Susan Fimmel
 HFI 2-RN, Gr 37
 3216/0050/1.0 FTE/CC

Niculina Popa
 HFI 2 RN Gr 37
 3216/0123/1.0 FTE/CC

Vacant
 Health Fac. Insp 2-RN
 Gr 37
 3216/0027/1.0 FTE/LV

Shirley Rains
 HFI Trainee, Gr 37
 3216/0038/1.0 FTE/CC

Renee Burch
 HFI 2-RN Gr 37
 3216/0101/0.5/ FTE/CC

Alicia Mazy
 HFI 2-RN, Gr 35
 3216/0143/1.0 FTE/CC

Sherrie Winkler
 Admin Assistant 3, Gr 27
 3216/0018/51 FTE/CC

Non State Position
 Nadine Howard
 Health Fac. Insp 2 RN
 MHM/CC

Sonja Cook
 HFI 3 Gr 36
 3216/0137/1.0 FTE/CC

John Coder
 Health Fac. Insp. 2 Gr 35
 (underfill HFI 1, Gr. 32)
 3216/0090/1.0 FTE/CC

Elen Clark
 Health Fac. Insp. 3 – RN, Gr 38
 3216/0040/1.0 FTE/CC

Jeffrey Caine
 Health Fac. Insp. 2 – RN, Gr 37
 3216/0031/1.0 FTE/LV

Anchita Panganiban
 Health Fac. Insp. 2 – RN, Gr 37
 3216/0408/1.0 FTE/LV

Vacant
 Health Fac. Insp. 2 – RN, Gr 37
 3216/0140/1.0 FTE/LV

Vacant
 Health Fac. Insp. 2 - RN, Gr 37
 3216/0124/1.0 FTE/LV

Grant Maher
 Health Fac. Insp 2-RN Gr 37
 3216/0097/1.0 FTE/CC

Donald Sampson
 HFI 3 Gr 36
 3216/0403/1.0 FTE/LV

Michael Kupper
 Health Fac. Insp. 2 Gr 35
 3216/0006/1.0 FTE/CC

Juaramarie Harris
 Health Fac. Insp. 2 Gr 35
 3216/0421/1.0 FTE/LV

Ashley Riedy
 Health Fac. Insp. 2 Gr 35
 3216/0135/1.0 FTE/LV

Domirick Spatola
 HFI 1, Gr 35
 3216/0414/1.0 FTE/CC

Johna Thacker
 Health Fac. Insp. 2 Gr 35
 3216/0142/1.0 FTE/LV

Maria Lingat-Collier
 Health Fac. Insp. 2 Gr 35
 3216/0407/1.0 FTE/LV

Vacant
 Health Fac. Insp. 2 Gr 35
 3216/0417/1.0 FTE/LV

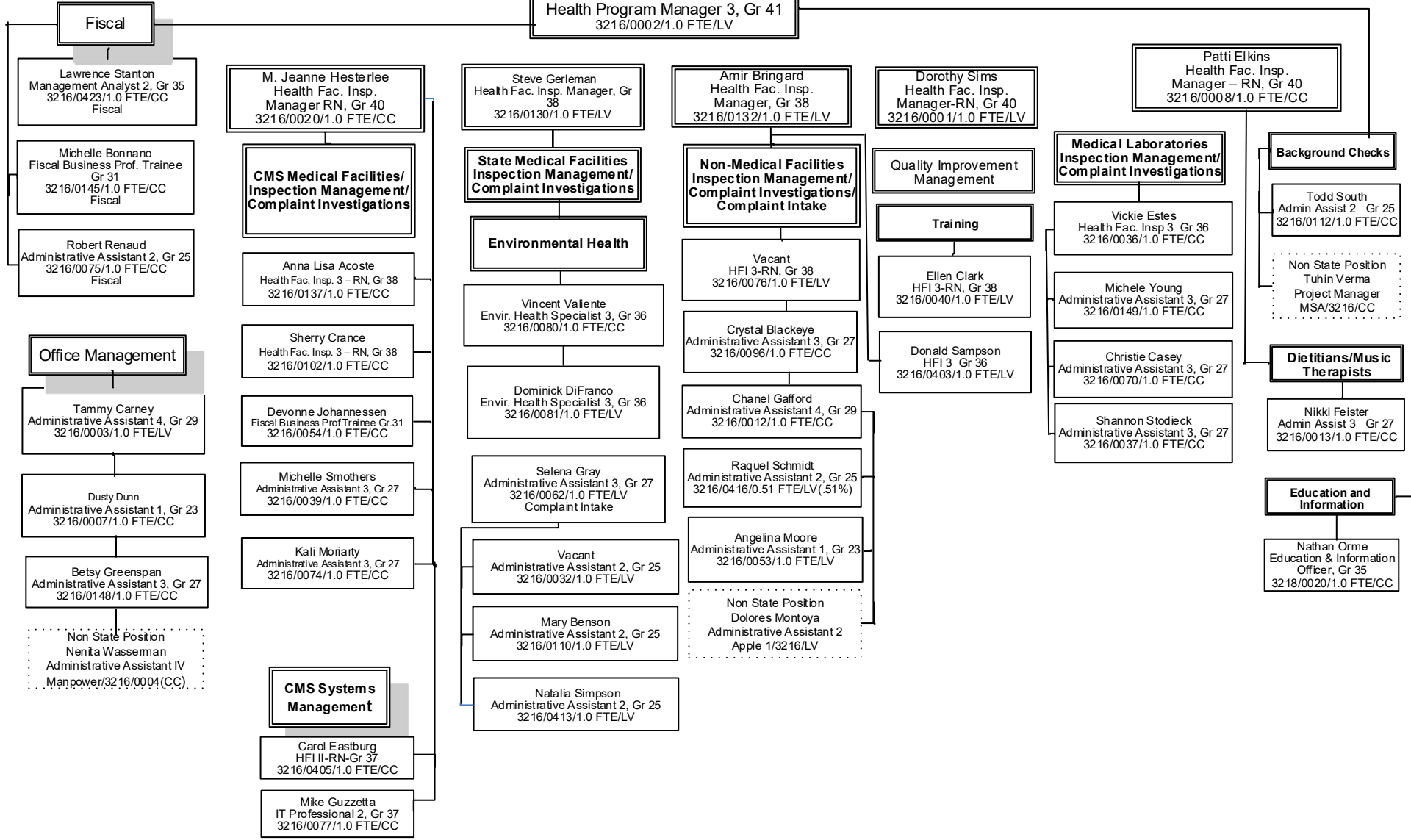
Terri Henwood
 Health Fac. Insp. 2 Gr 35
 3216/0410/1.0 FTE/LV

Division of Public & Behavioral Health
 Regulatory & Planning Services
 Health Care Quality and Compliance
 Administration
 September, 2018

Margot Chappel
 Deputy Division Administrator (U)
 3223/0007/1.0 FTE/CC

Paul Shubert
 Health Bureau Chief, Gr 42
 3216/0033/1.0 FTE/CC

Leticia Metherell
 Health Program Manager 3, Gr 41
 3216/0002/1.0 FTE/LV



Division of Public & Behavioral Health
 Regulatory & Planning Services
 Health Care Quality and Compliance
 Child Care Licensing
 September, 2018

