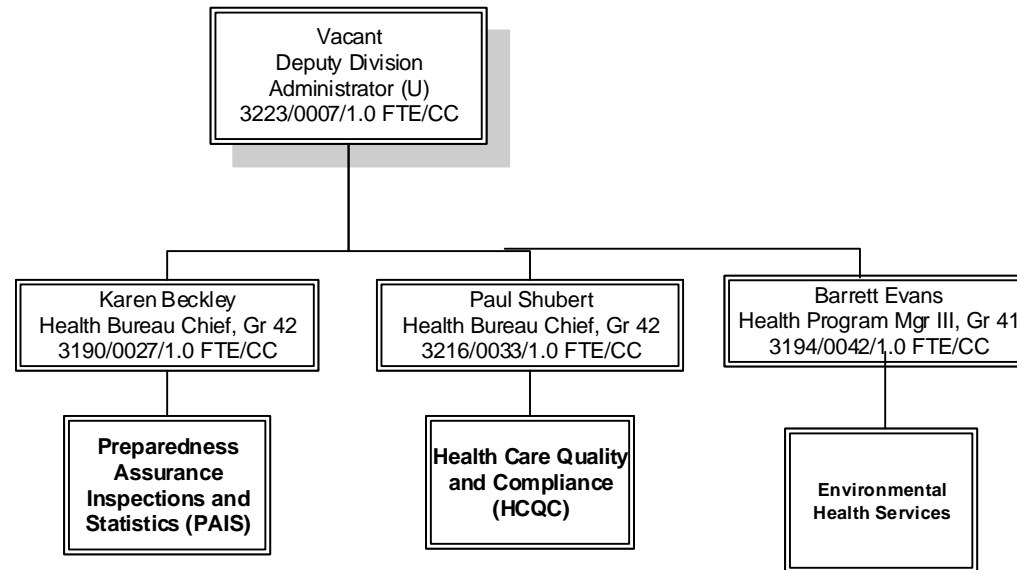
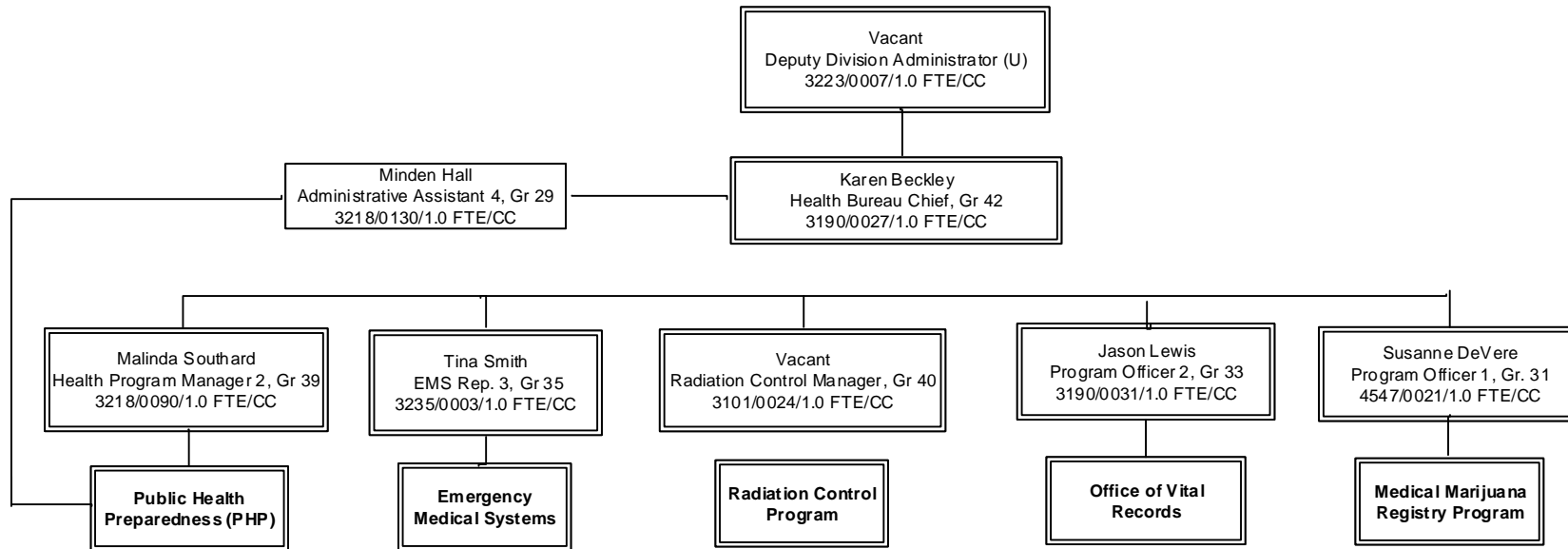


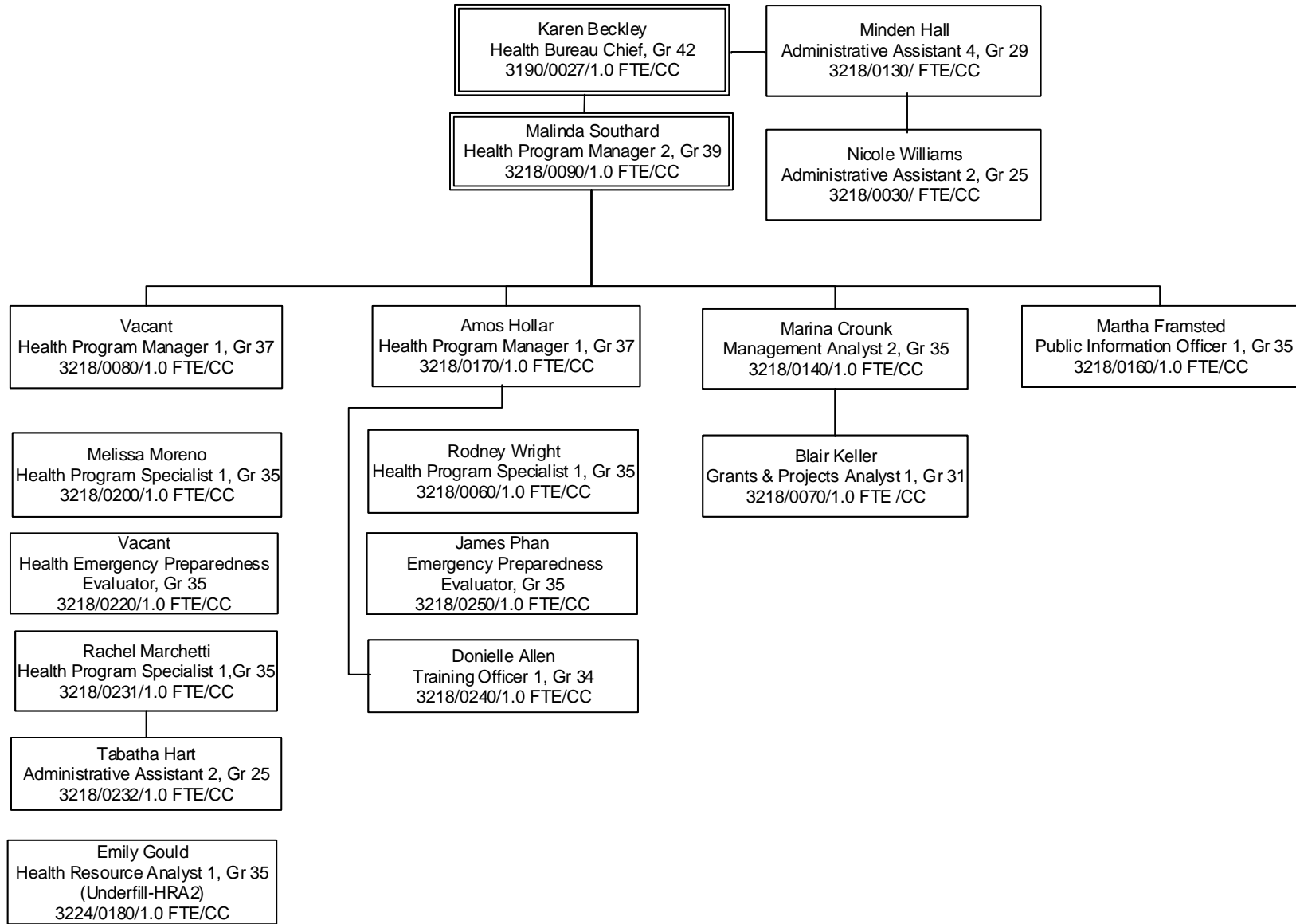
Division of Public & Behavioral Health
Regulatory and Planning Services
Administrative
June, 2018



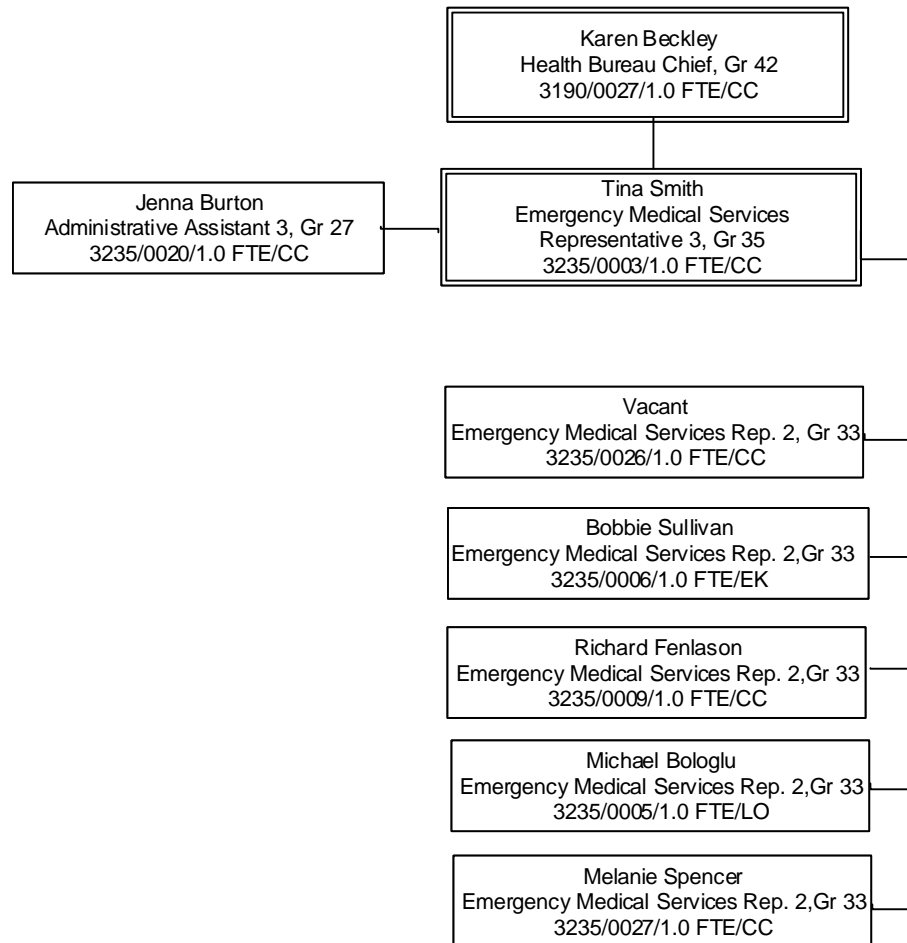
Division of Public & Behavioral Health
Regulatory and Planning Services
Preparedness, Assurance, Inspections and Statistics
(PAIS)
May, 2018



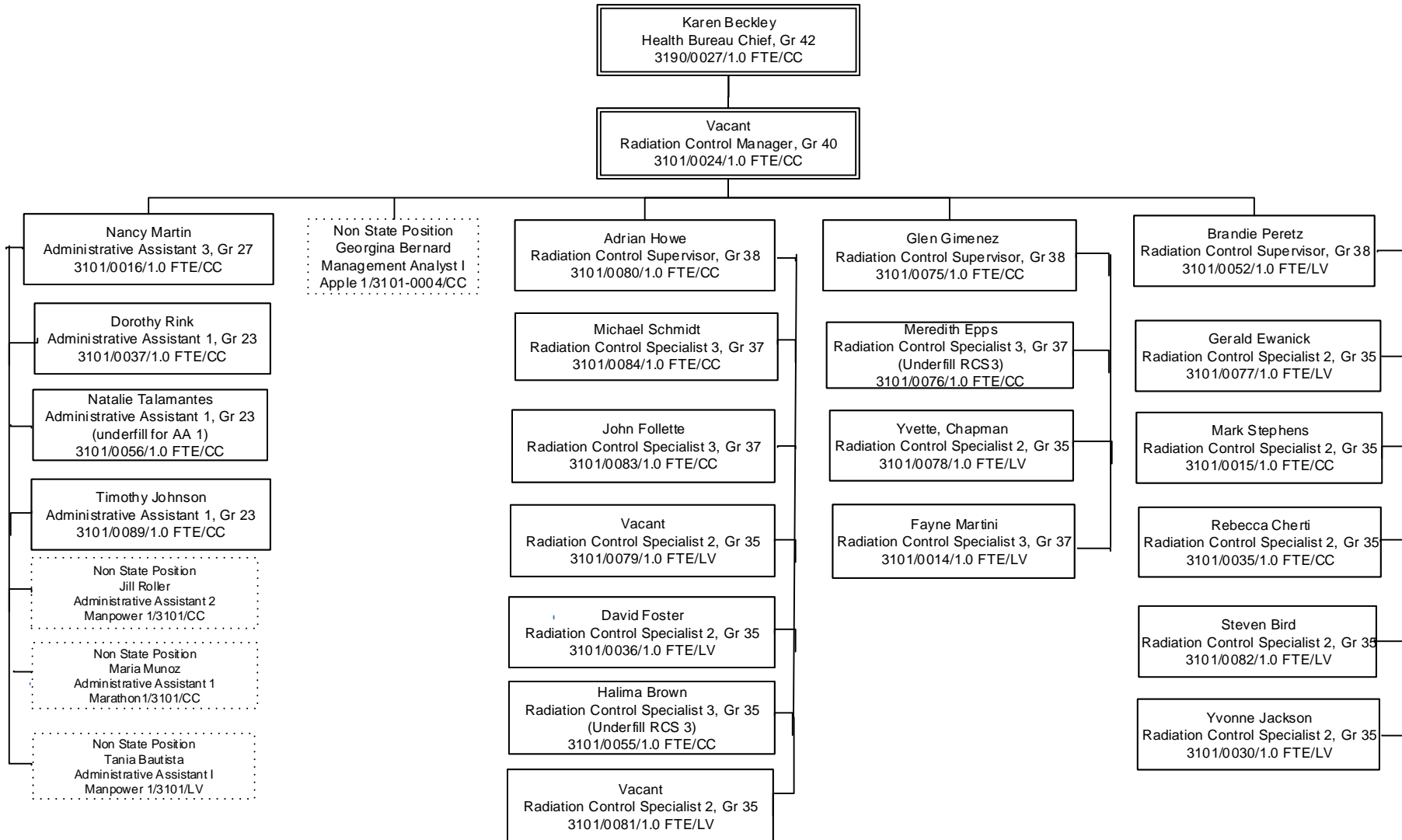
Division of Public & Behavioral Health
 Regulatory and Planning Services
 Preparedness, Assurance, Inspections and Statistics
 Public Health Preparedness
 May, 2018



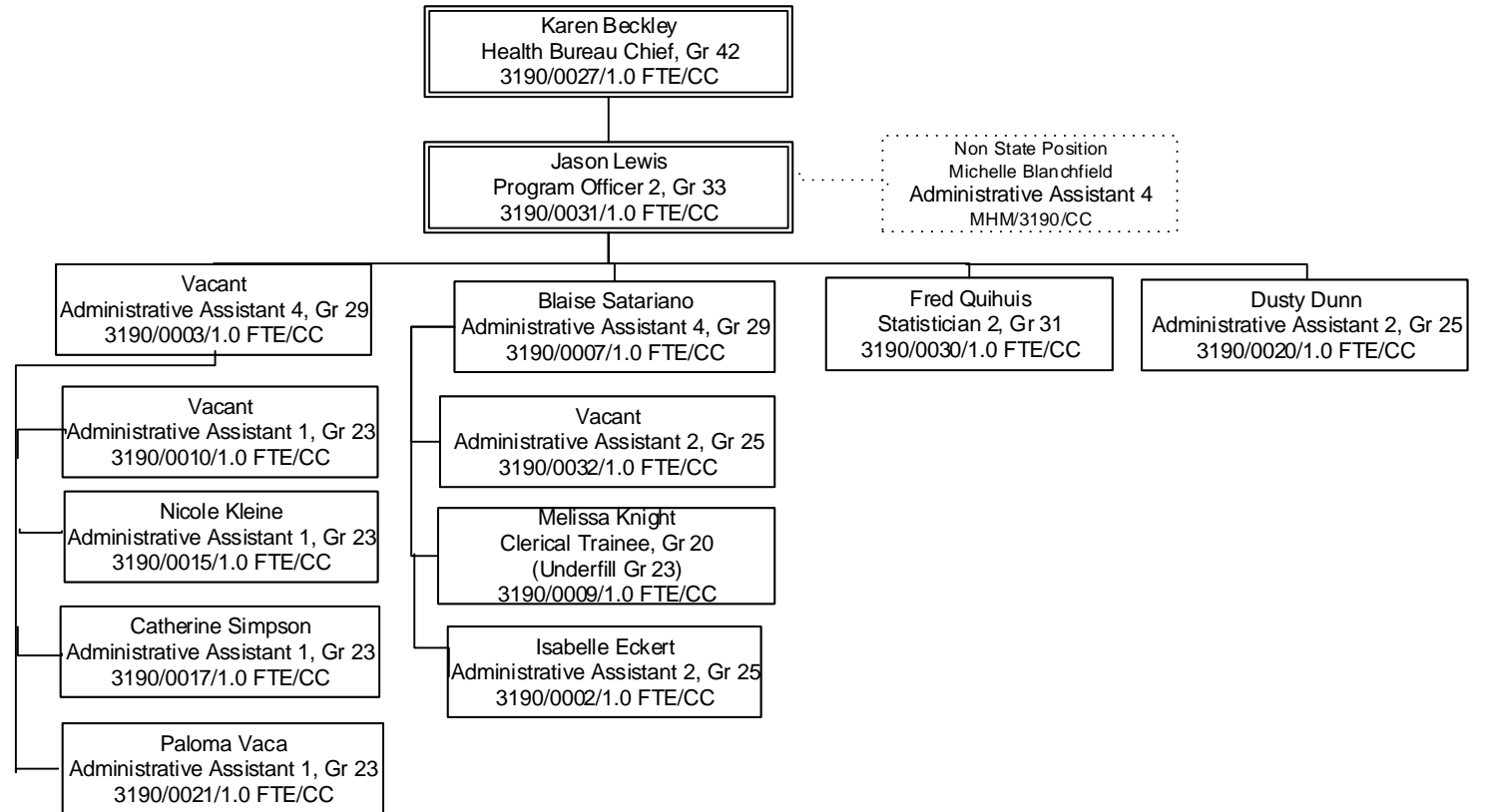
Division of Public & Behavioral Health
Regulatory and Planning Services
Preparedness, Assurance, Inspections and Statistics
Emergency Medical System
May, 2018



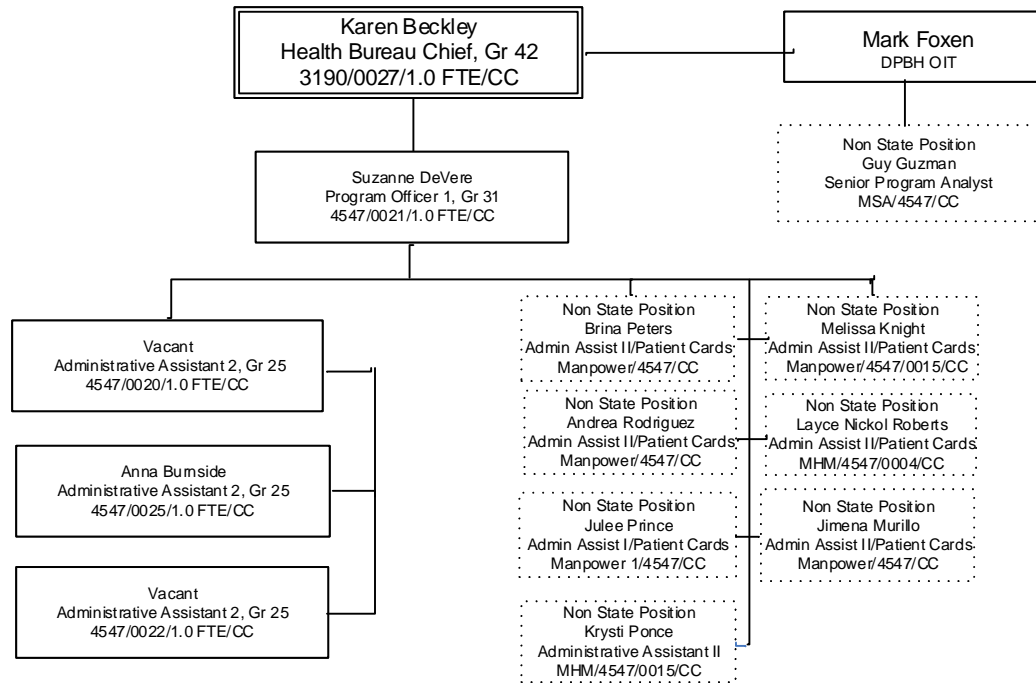
Division of Public & Behavioral Health
 Regulatory and Planning Services
 Preparedness, Assurance, Inspections and Statistics
 Radiation Control Program
 May, 2018



Division of Public & Behavioral Health
 Regulatory and Planning Services
 Preparedness, Assurance, Inspections and Statistics
 Office of Vital Records
 May, 2018



Division of Public & Behavioral Health
 Regulatory and Planning Services
 Preparedness, Assurance, Inspections and Statistics
 Medical Marijuana Registry
 May, 2018



Non State Position
Diane Allen
Health Facilities Inspection Manager RN:
MHM/3216/CC

Paul Shubert
Health Bureau Chief, Gr 42
3216/0033/1.0 FTE/CC

Leticia Metherell
Health Program Manager 3, Gr 41
3216/0002/1.0 FTE/LV

Division of Public & Behavioral Health
Regulatory & Planning Services
Health Care Quality and Compliance
Inspections Management/Complaint Investigations
May, 2018

Amir Bringard
Health Fac. Insp. Manager, Gr 38
3216/0132/1.0 FTE/LV

Steven Gerleman
Health Fac. Insp. Mgr, Gr 38
3216/0130/1.0 FTE/LV

M. Jeanne Hesterlee
Health Fac. Insp. Mgr – RN, Gr 40
3216/0020/1.0 FTE/CC

Dorothy Sims
Health Fac. Insp. Mgr RN, Gr 40
3216/0001/1.0 FTE/LV

Patti Ekins
Health Fac. Insp. Mgr – RN, Gr 40
3216/0008/1.0 FTE/CC

Minou Nelson
HFI 3, Gr 36
3216/0402/1.0 FTE/LV

Jennifer Dunaway
HFI 3 Gr 36
3216/0044/1.0 FTE/LV

Leah Arvidson
HFI 3 Supervisor Gr 36
3216/0041/1.0 FTE/LV

Gerardo Caudal
HFI 3 RN Gr 38
3216/0076/1.0 FTE/LV

Vickie Estes
Health Fac. Insp. 3 Gr 36
3216/0036/1.0 FTE/CC

Viva Wells
HFI 3 – RN, Gr 38
3216/0026/1.0 FTE/LV

Sherry Cranoe
HFI 3 – RN, Gr 38
3216/0102/1.0 FTE/CC

Sonja Cook
HFI 3 Gr 36
3216/0137/1.0 FTE/CC

Ellen Clark
Health Fac. Insp. 3 – RN, Gr 38
3216/0040/1.0 FTE/CC

Johna Thacker
Health Fac. Insp. 2 Gr 35
3216/0142/1.0 FTE/LV

Donald Walsh
Health Fac. Insp. 2 Gr 35
3216/0051/1.0 FTE/LV

Vacant
HFI 2 RN Gr 37
3216/0404/1.0 FTE/LV

Robert Cain
Health Fac. Insp. 2 Gr 35
3216/0120/1.0 FTE/CC

Korinne McVeety
Health Fac. Insp 2 Gr 35
3216/0048/1.0 FTE/CC

Bradley Waples
Health Fac. Insp. 2 Gr 35
3216/0045/1.0 FTE/LV

Pamela Ross
HFI 2 Gr 35
3216/0060/1.0 FTE/LV

Susan Finnell
HFI 2-RN, Gr 37
3216/0050/1.0 FTE/CC

John Coder
Health Fac. Insp. 2 Gr 35
(underfill HFI 1, Gr. 32)
3216/0090/1.0 FTE/CC

Jeffrey Caine
Health Fac. Insp. 2 – RN, Gr 37
3216/0031/1.0 FTE/LV

Maria Lingat-Collier
Health Fac. Insp. 2 Gr 35
3216/0407/1.0 FTE/LV

Esther Ortega
Health Fac. Insp. 2 Gr 35
(underfill H/HSP/ Gr 30)
3216/0418/1.0 FTE/CC

Michael Leon
HFI 2 - RN Gr 37
3216/0043/1.0 FTE/LV

John Gemar
Health Fac. Insp. 2 Gr 35
3216/0042/1.0 FTE/LV

Anna Mae DeLeon
HFI 2 RN, Gr 37
3216/0138/1.0 FTE/LV

Doris Litman
Health Fac. Insp. 2 Gr 35
3216/0005/1.0 FTE/LV

Vacant
Health Fac. Insp 2-RN
Gr 37
3216/0058/1.0 FTE/LV

Niculina Popa
HFI 2 RN Gr 37
3216/0123/1.0 FTE/CC

Anchita Panganiban
Health Fac. Insp. 2 – RN, Gr 37
3216/0408/1.0 FTE/LV

Sheri Abdil
Health Fac. Insp. 2 Gr 35
3216/0417/1.0 FTE/LV

Kristina Leopard
Health Fac. Insp. 2 Gr 35
3216/0093/1.0 FTE/LV

Marian Niedrauer
HFI 2 – RN, Gr 37
3216/0034/1.0 FTE/LV

Anne Meyer
Health Fac. Insp. 2 Gr 35
3216/0059/1.0 FTE/LV

Galynd Schoenstein
HFI 2 – RN, Gr 37
3216/0092/1.0 FTE/LV

Emma Duarte
Health Fac. Insp. 2 Gr 35
3216/0412/1.0 FTE/CC

Eulemia Quiday-Richman
Health Fac. Insp 2-RN
Gr 37
3216/0079/1.0 FTE/CC

Vacant
Health Fac. Insp 2-RN
Gr 37
3216/0027/1.0 FTE/LV

Vacant
Health Fac. Insp. 2 – RN, Gr 37
3216/0140/1.0 FTE/LV

Terri Henwood
Health Fac. Insp. 2 Gr 35
3216/0410/1.0 FTE/LV

Mekeya Brown-Williams
Health Fac. Insp. 2 Gr 35
3216/0419/1.0 FTE/LV

Vacant
HFI 2 – RN, Gr 37
3216/0035/1.0 FTE/LV

Vacant
HFI 2 – RN, Gr 37
3216/0406/1.0 FTE/LV

Connie Stein
Health Fac. Insp. 2 Gr 35
3216/0415/1.0 FTE/LV

Non State Position
Evelyn Sayre
Health Fac. Insp 2 MedLab:
MHM/3216/LV

Deborah Denson
Health Fac. Insp 2-RN
Gr 37
3216/0409/1.0 FTE/CC

Shirley Rains
HFI Trainee, Gr 37
3216/0038/1.0 FTE/CC

Vacant
Health Fac. Insp. 2 – RN, Gr 37
3216/0124/1.0 FTE/LV

Grant Maher
Health Fac. Insp 2-RN Gr 37
3216/0097/1.0 FTE/CC

Non State Position
Kyle Parkson
UNL Investigator
MHM/3216/LV

Victoria Sepdc
Health Fac. Insp. 2 Gr 35
3216/0411/1.0 FTE/LV

Penny Orr
HFI 2 - RN Gr 37
3216/0122/1.0 FTE/LV

Non State Position
Nadine Howard
Health Fac. Insp 2 RN:
MHM/CC

Yolanda Sinisgallo
Health Fac. Insp. 2 Gr 35
3216/0098/1.0 FTE/LV

Renee Burch
HFI 2-RN Gr 37
3216/0101/0.5 FTE/CC

Donald Sampson
HFI 3 Gr 36
3216/0403/1.0 FTE/LV

Michael Kupper
Health Fac. Insp. 2 Gr 35
3216/0006/1.0 FTE/CC

Mises Gomez Rivas
HFI 2 - RN Gr 37
3216/0091/1.0 FTE/LV

Alicia Mazy
HFI 2-RN, Gr 35
3216/0143/1.0 FTE/CC

Sherrie Winkler
Admin Assistant 3, Gr 27
3216/0018/51 FTE/CC

Non State Position
Ashley Riedy
Health Fac. Insp. 2 Gr 35
3216/0135/1.0 FTE/LV

Jeremy Lovell
HFI 1, Gr 35
3216/0414/1.0 FTE/CC

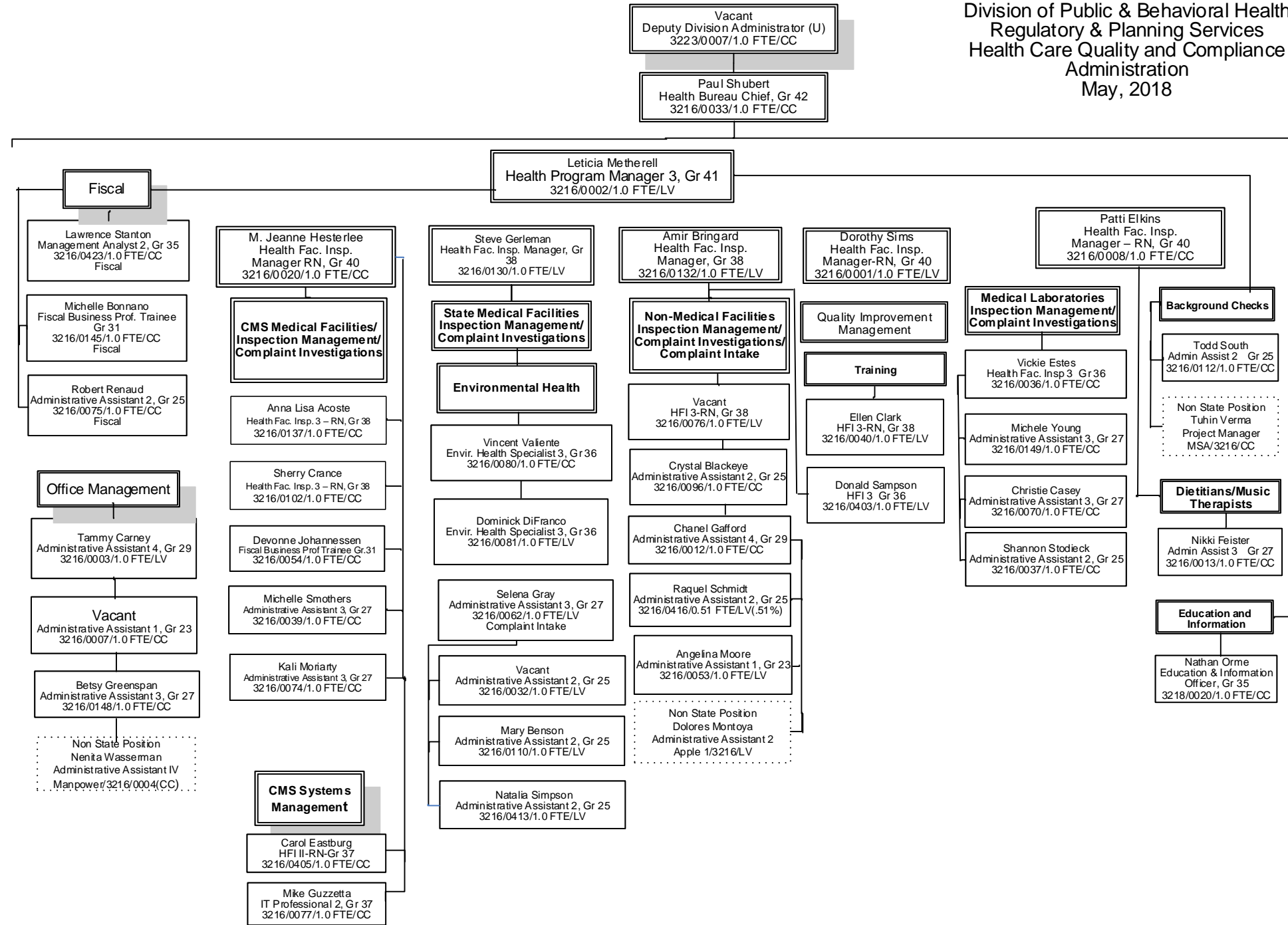
Non State Position
Nadine Howard
Health Fac. Insp 2 RN:
MHM/CC

Juaramarie Harris
Health Fac. Insp. 2 Gr 35
3216/0421/1.0 FTE/LV

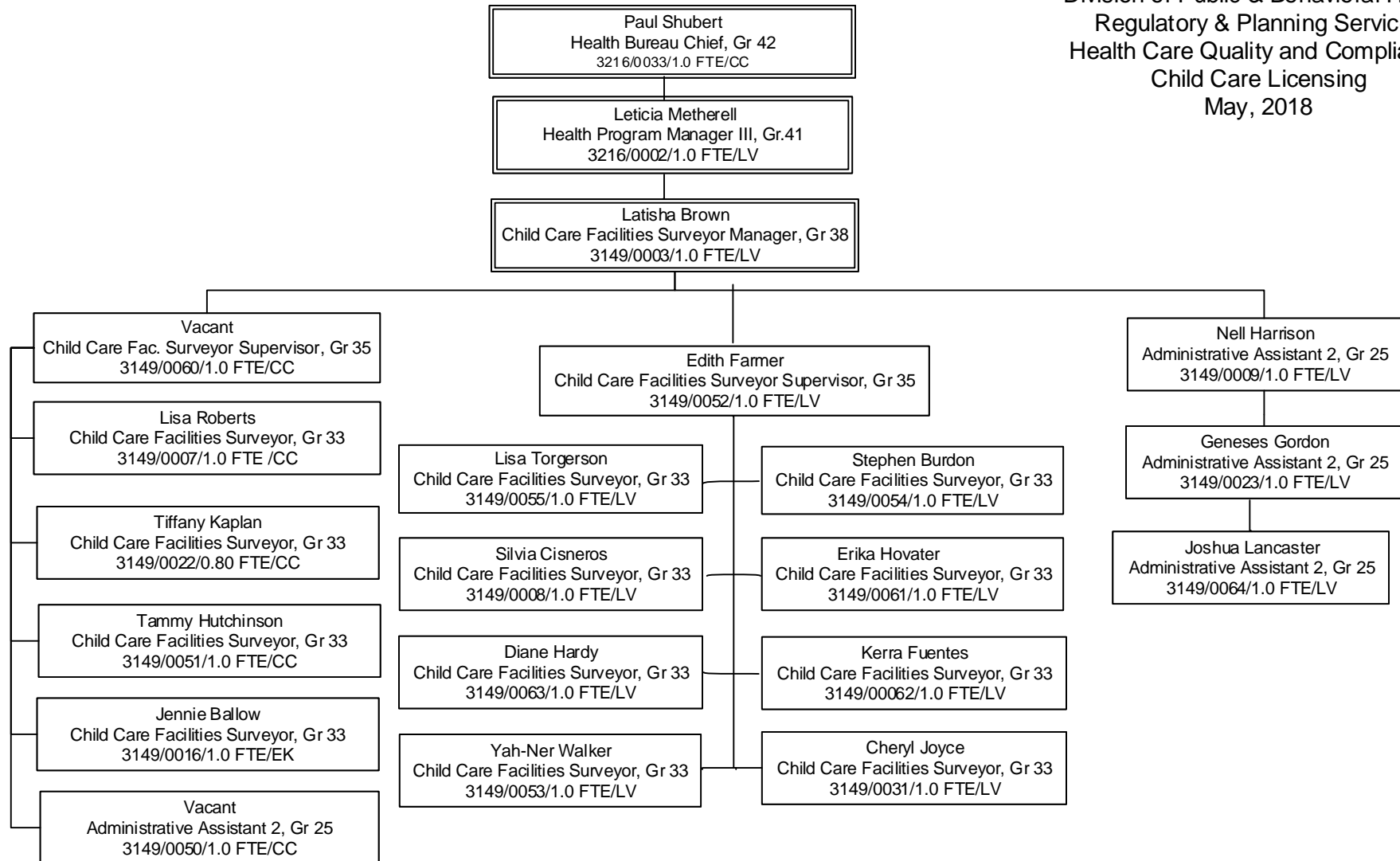
Ashley Riedy
Health Fac. Insp. 2 Gr 35
3216/0135/1.0 FTE/LV

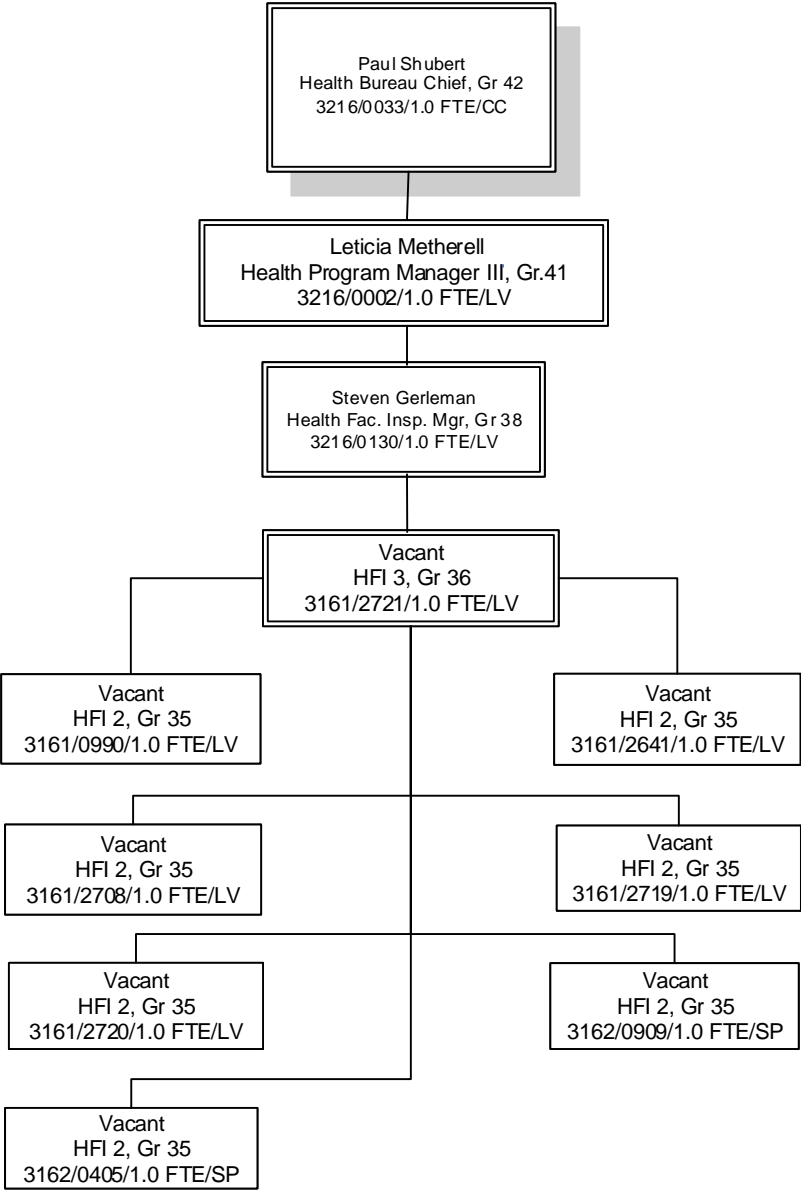
Jeremy Lovell
HFI 1, Gr 35
3216/0414/1.0 FTE/CC

Division of Public & Behavioral Health
 Regulatory & Planning Services
 Health Care Quality and Compliance
 Administration
 May, 2018



Division of Public & Behavioral Health
 Regulatory & Planning Services
 Health Care Quality and Compliance
 Child Care Licensing
 May, 2018





Division of Public and Behavioral
Health
Regulatory and Planning Services
Environmental Health Program
May, 2018

