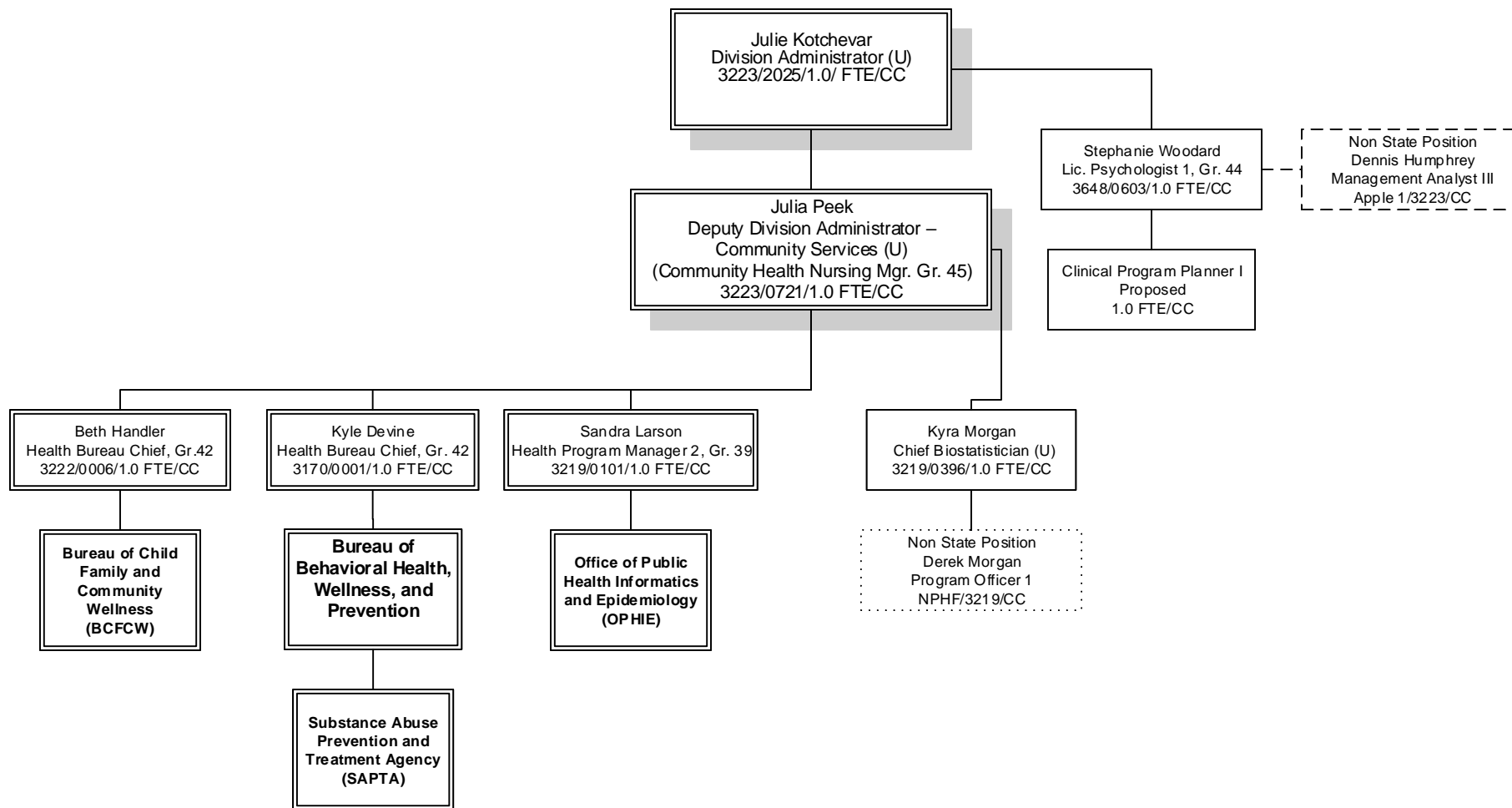
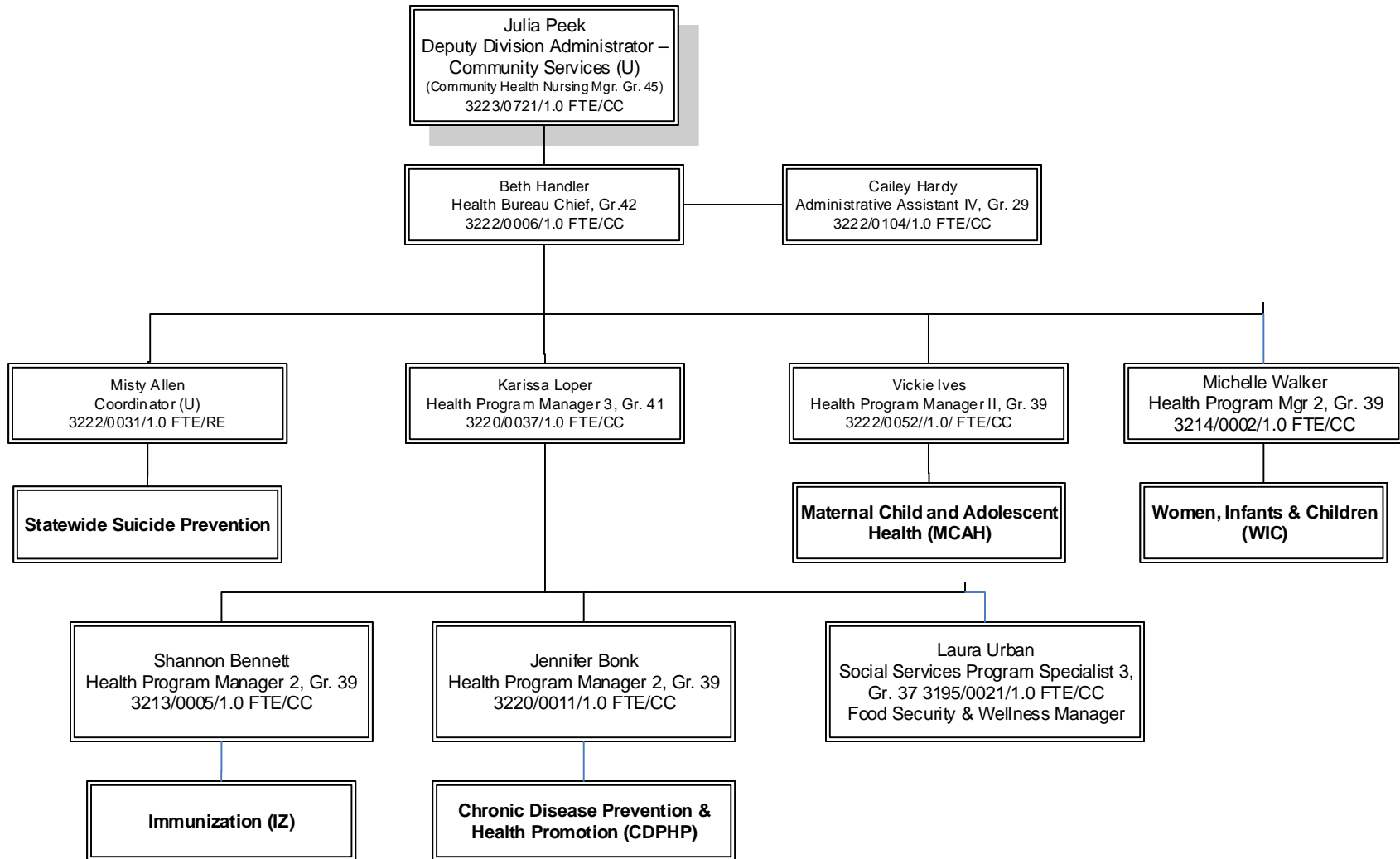


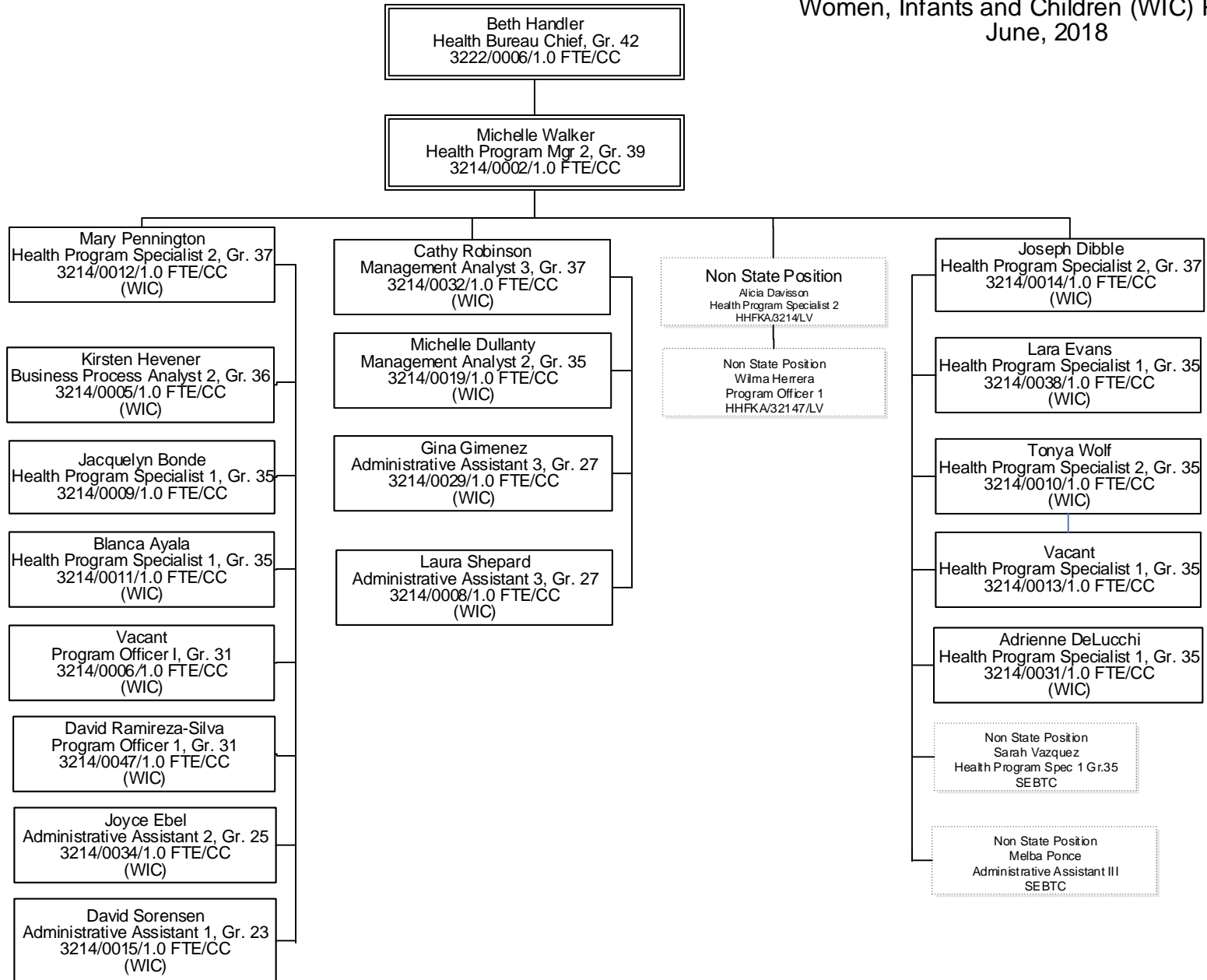
Division of Public & Behavioral Health
 Community Services
 Administrative
 June, 2018



Division of Public & Behavioral Health
 Community Services
 Bureau of Child, Family and Community Wellness
 June, 2018



Division of Public & Behavioral Health
 Community Services
 Bureau of Child, Family and Community Wellness
 Women, Infants and Children (WIC) Program
 June, 2018



Division of Public & Behavioral Health
 Community Services
 Bureau of Child, Family and Community Wellness
 Maternal, Child & Adolescent Health
 June, 2018

Beth Handler
 Health Bureau Chief, Gr. 42
 3222/0006/1.0 FTE/CC

Vickie Ives
 Health Program Mgr 2, Gr. 39
 3222/0052/1.0 FTE/CC

Deborah Tom
 Administrative Asst. 3 Gr. 27
 3222/0055/1.0 FTE/CC
 (MCAH)

Misty Allen
 Statewide Suicide Prevention
 Coordinator (U)
 3222/0031/1.0 FTE/RE

Richard Egan
 Statewide Suicide Prevention
 Trainer Fac. (U)
 3222/0030/1.0 FTE/LV

Non State Position
 Florece Bolden
 AWARE Admin Assistant
 Manpower/3222-0019/CC
 BCFW/Suicide Prev

Angela Friedman
 Administrative Assistant 4, Gr. 29
 3222/0033/1.0 FTE/RE

Janett Massolo
 Statewide Suicide Prevention
 Trainer Fac. (U)
 3222/0032/1.0 FTE/RE

Non State Position
 Susan Rpsom
 Youth Mental Health First Aid
 Coord.
 3222/CC

Sarah Demuth
 Management Analyst 2 Gr. 35
 3222/0503/1.0 FTE/CC
 (MCH-Fiscal)

Non State Position
 Vacant
 Health Program Specialist 1
 3222/CC
 PREP

Non State Position
 Aundrea Ogushi
 Program Officer 2
 3222/CC
 AEGP

Non State Position
 Cecilia Flores
 Administrative Assistant 2
 3222/CC
 PRAMS/AEGP

Non State Position
 Christabell Sotelo-Zecena
 Grants & Projects Analyst 1
 3222/CC
 PRAMS/AEGP

Brian DeValiere
 Health Program Mgr 1, Gr. 37
 3222/0114/1.0 FTE /CC
 (MCH)

Christina Turner
 Health Program Specialist 1, Gr. 35
 3222/0103/1.0 FTE/CC
 (Maternal & Infant)

Deborah Duchesne
 Health Program Specialist 1, Gr. 35
 3222/0066/1.0 FTE/CC
 (MCH/RPE)

Vacant
 Health Program Specialist 2, Gr. 35
 3222/0071/1.0 FTE (CC)
 (MCH-EPI)

Eileen Hough
 Health Program Specialist 1, Gr. 35
 3222/0063/1.0 FTE (CC)
 (Metabolic)

Non State Position
 Vacant
 Health Program Specialist 1
 MHM/3233/CC

Evelyn Dryer
 Health Program Specialist 2 Gr 37
 3222/0515/1.0/FTE/CC
 Home Visiting

Charlotte Andreasen
 Health Program Specialist 1 Gr 35
 3222/0508/1.0/FTE/CC
 Home Visiting

Melissa Madera
 Health Program Specialist II Gr 35
 3222/0509/1.0/FTE/CC
 Home Visiting

Jennifer Quihuis
 Management Analyst 2 Gr 35
 3222/0510/1.0/FTE/CC

Theresa Coleman
 Administrative Assistant I Gr. 23
 3222/0511/1.0 FTE (CC)
 Home Visiting

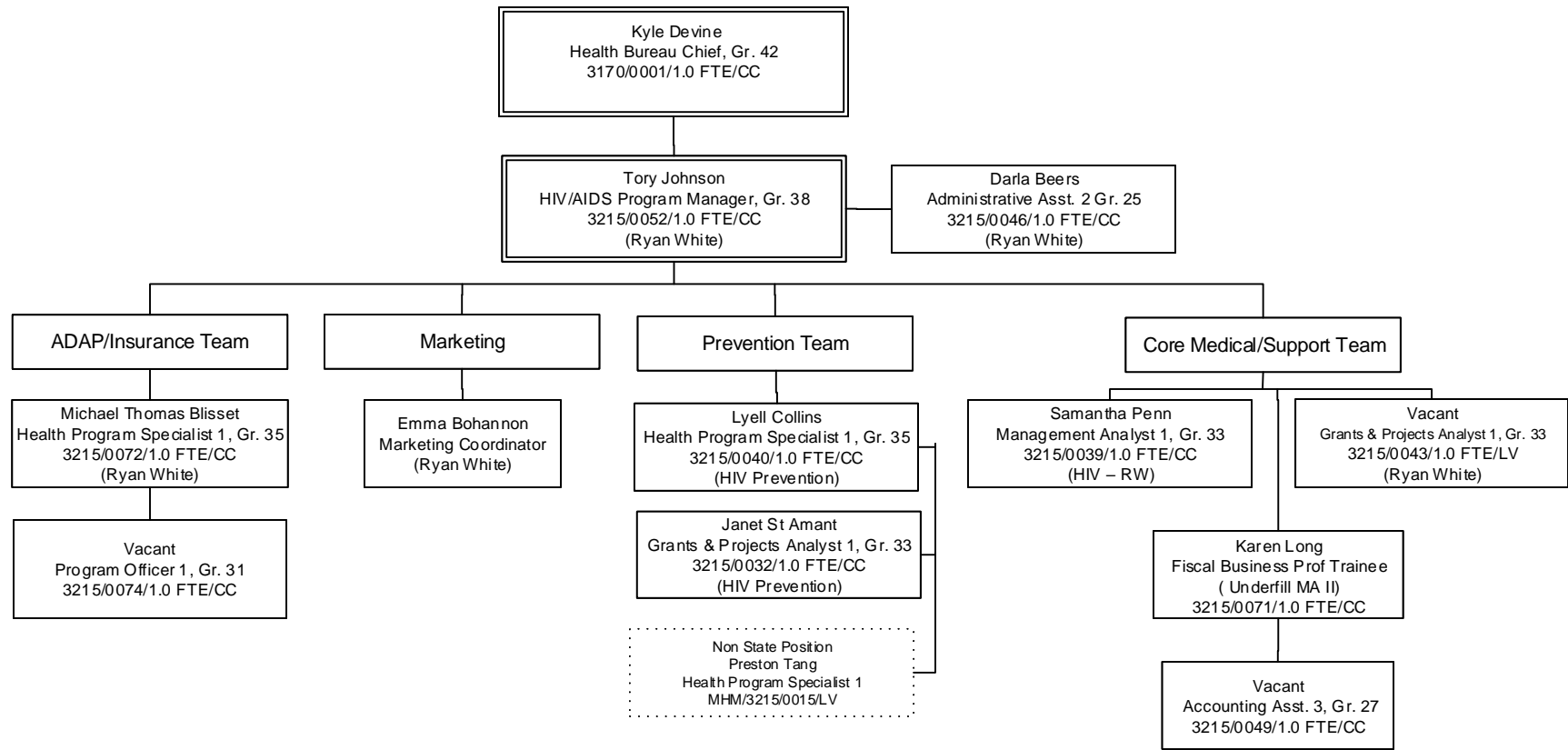
Perry Smith
 Health Program Specialist 1, Gr. 35
 3222/0070/1.0 FTE/CC
 EHDl

Vacant
 Administrative Asst. 2, Gr. 25
 3222/0506/1.0 FTE/CC
 EHDl

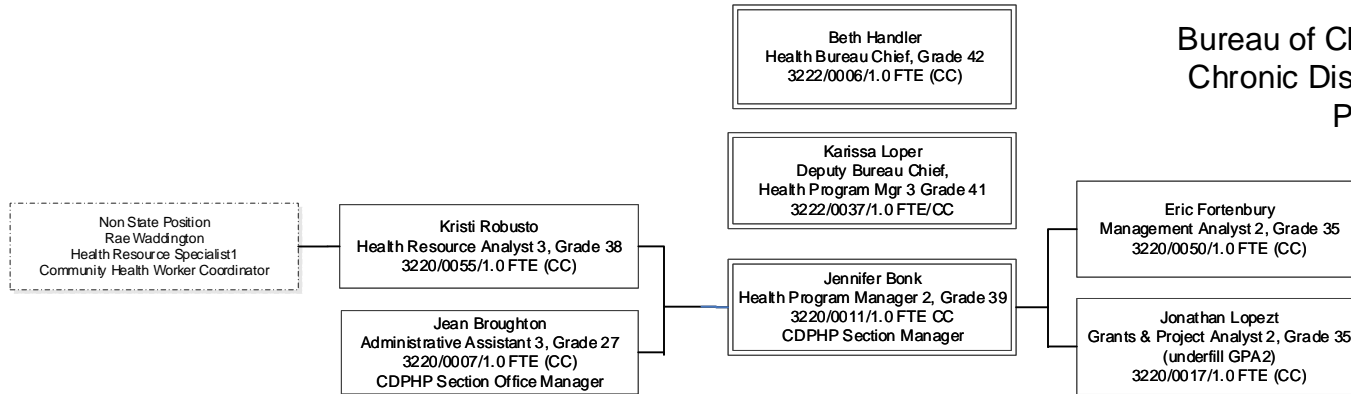
Non State Position
 Alana Woodbury
 Health Resource Analyst I
 MHM322/CC

Non State Position
 Diane Miller
 Contracted Audiologist
 EHDl

Division of Public & Behavioral Health
 Community Services
 Behavioral Health, Wellness and Prevention
 HIV Prevention and Ryan White Part B AIDS Drugs
 Assistance Program
 June, 2018



Division of Public & Behavioral Health
 Community Services
 Bureau of Child, Family and Community Wellness
 Chronic Disease Prevention & Health Promotion
 Promotion (CDPHP) Section
 June, 2018



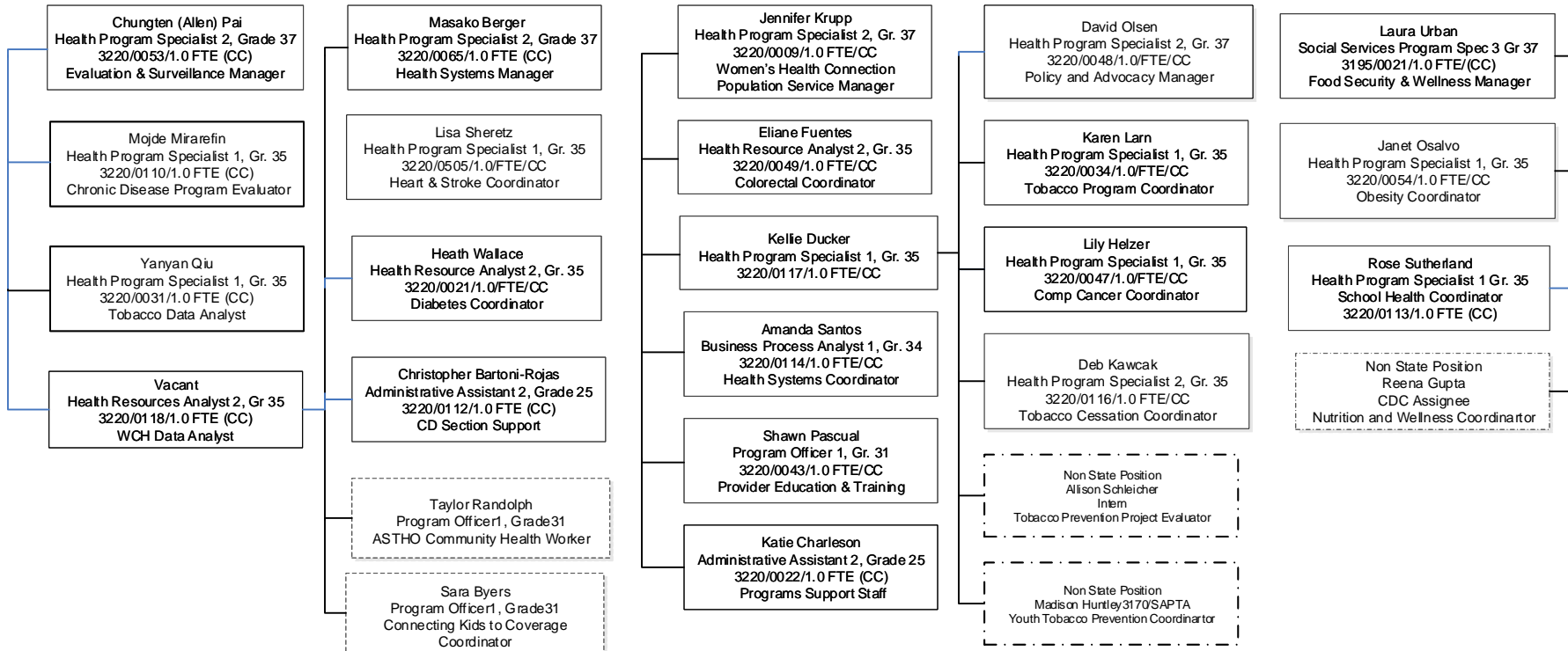
Evaluation & Surveillance

Health System Interventions

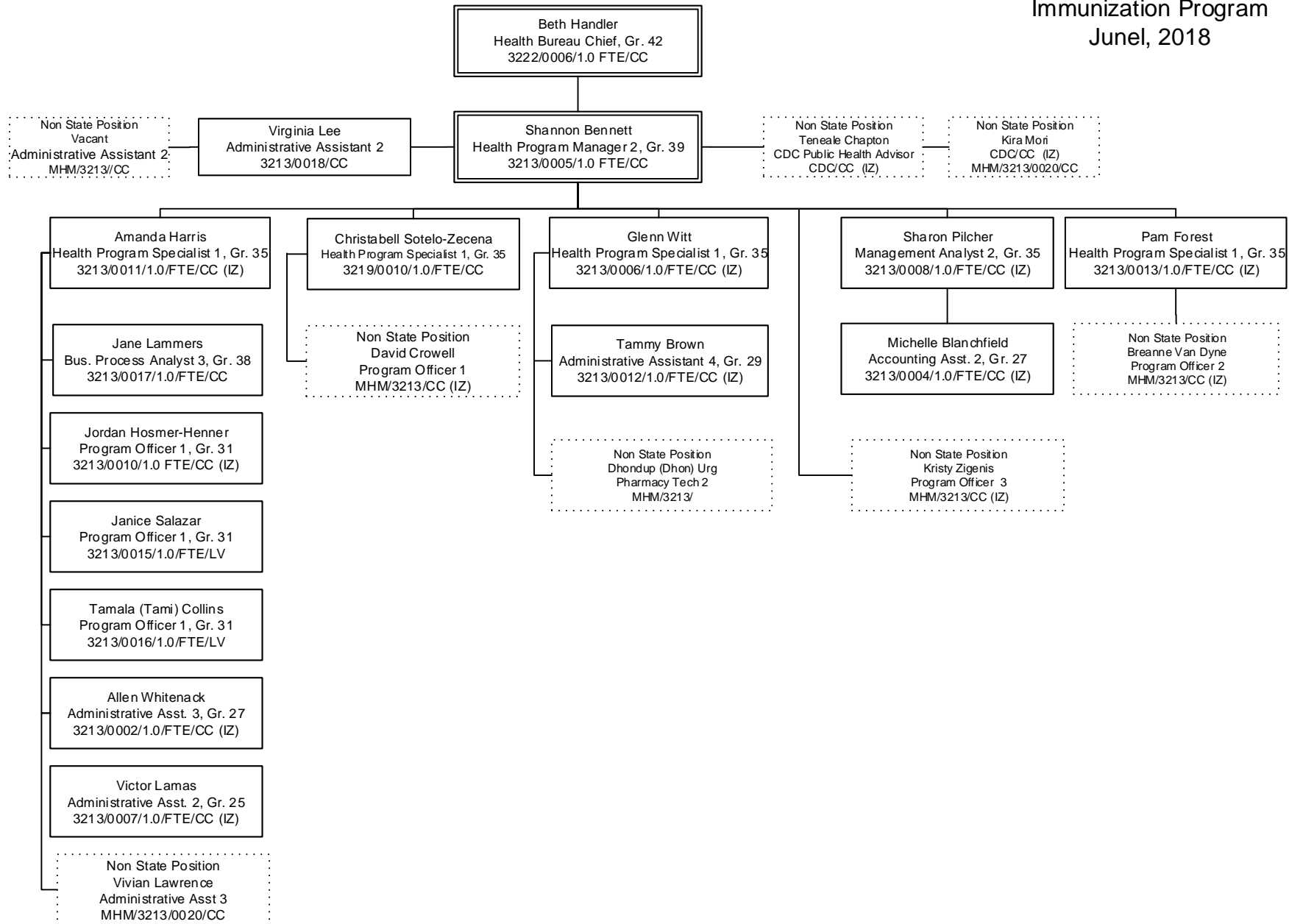
Clinical & Community Services

Policy Systems & Environmental Change

Office of Food Security and Wellness



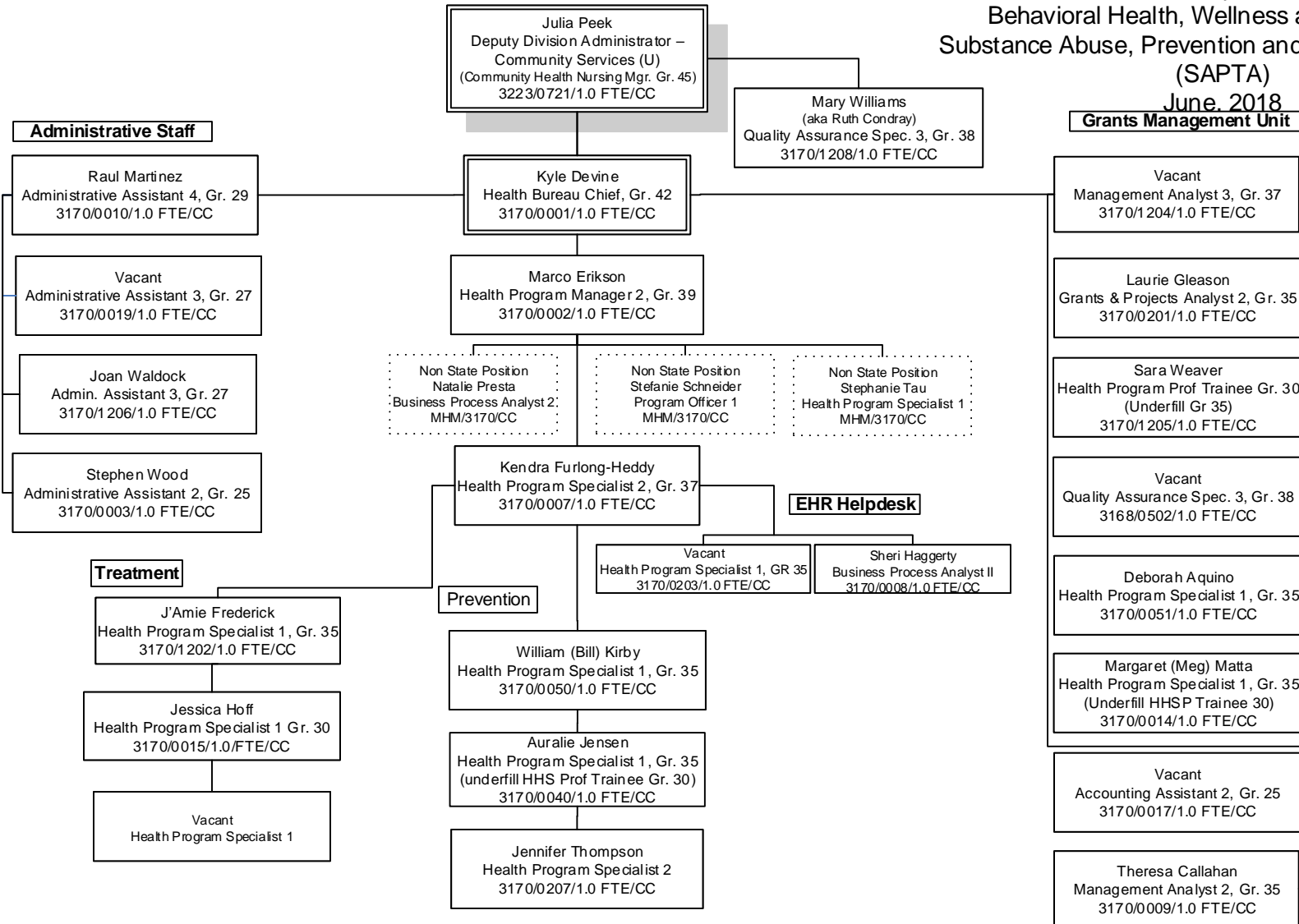
Division of Public & Behavioral Health
 Community Services
 Bureau of Child, Family and Community Wellness
 Immunization Program
 June, 2018



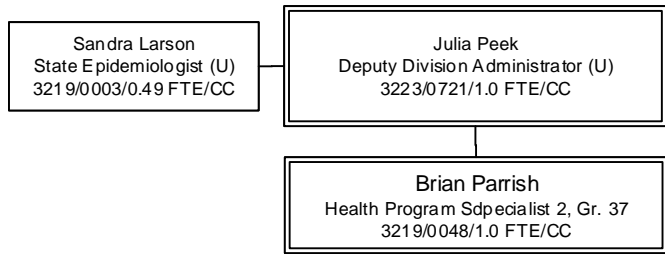
Division of Public & Behavioral Health
Community Services
Behavioral Health, Wellness and Prevention
Substance Abuse, Prevention and Treatment Agency
(SAPTA)

June 2018

Grants Management Unit



Division of Public & Behavioral Health
 Community Services
 Office of Public Health Investigations
 (OPHIE)
 June, 2018



Disease Investigation

- Melissa Peek-Bullock
State Epidemiologist (U)
3219/0003/0.51 FTE/RE
- Tami Conn
Health Program Specialist I, Gr. 35
3219/0117/1.0 FTE/CC

Cancer Registry

- Christina Pool
Health Program Specialist II, Gr. 37
3153/0006/1.0 FTE/CC
- Rani Reed
Business Process Analyst II, Gr. 36
3153/0012/1.0/FTE/CC
- Catherina Short
Cancer Control Specialist, Gr. 32
3153/0010/1.0 FTE/LV
- Vacant
Cancer Tumor Registrar Gr.32
3153/0005/1.0/FTE/CC
- Non State Position
Nina Shaffer
Cancer Registrar Specialist
MHM/3153/0021/CC
- Non-State Position
Jane Saavedra
Cancer Registrar Specialist
MHM/3153/0021/CC
- Non State Position
Dolores Perez-Cowlishaw
Cancer Registrar Specialist
MHM/3153/0021/CC

Administrative/Fiscal

- Karen Felicetta
Business Proc Analyst 2, Gr. 36
3219/0118/1.0 FTE/CC
- Tom Fletcher
Management Analyst 2, Gr. 35
3219/0115/1.0 FTE/CC
- Petra Bartella
Grants & Projects Analyst I, Gr. 35
3219/0119/1.0/FTE/RE
- Vacant
Administrative Asst. II, Gr. 25
3153/0008/1.0 FTE/CC

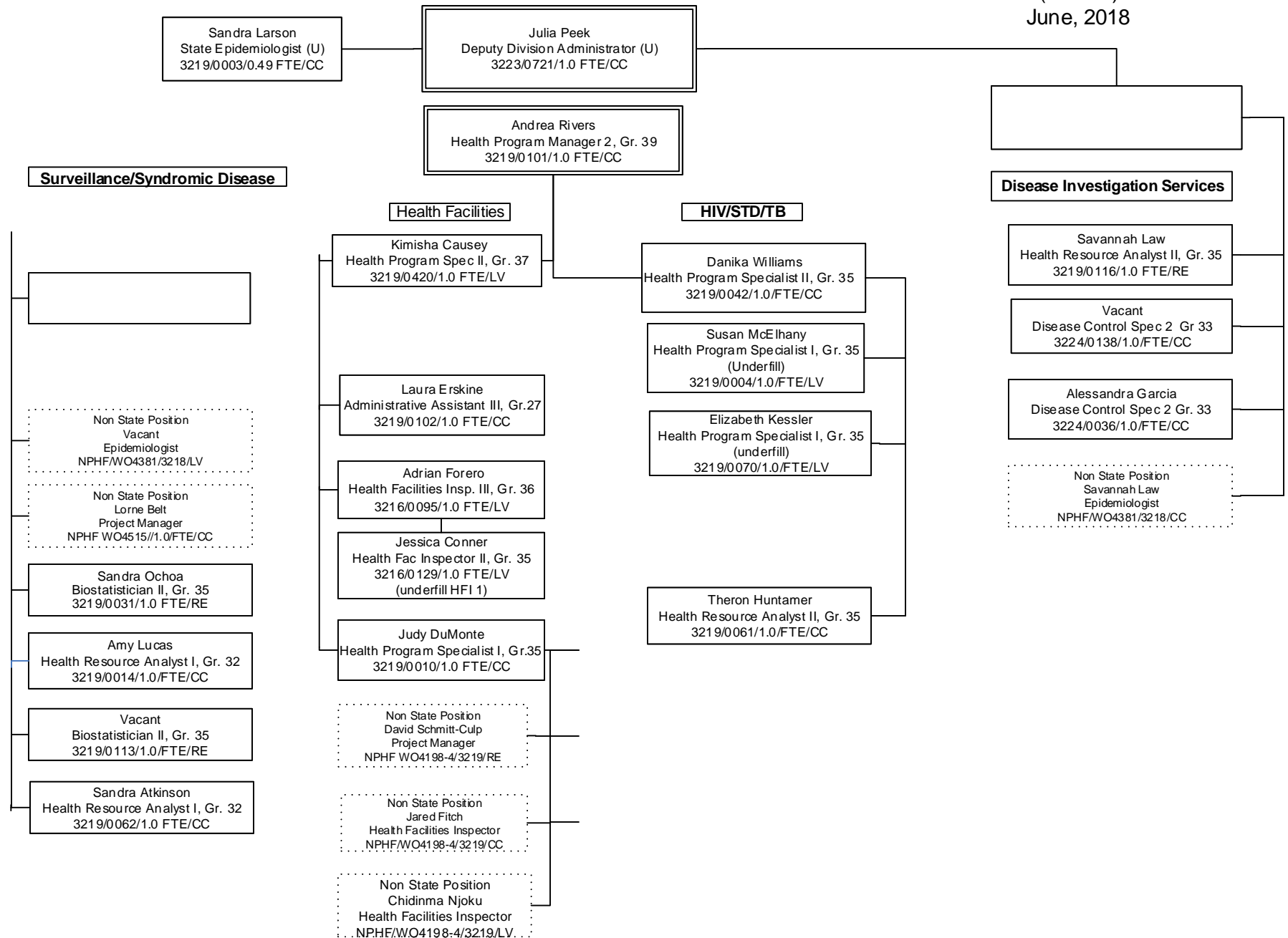
HIV/STD/TB

- Danika Williams
Health Program Specialist 2, Gr. 35
3219/0042/1.0 FTE/CC
- Susan McElhany
Health Program Specialist 2, Gr. 35
(underfill)
3219/0004/1.0 FTE/LV
- Elizabeth Kessler
Health Program Specialist 1, Gr. 35
(underfill)
3219/0070/1.0 FTE/LV
- Theron Huntamer
Health Resource Analyst 2, Gr. 35
3219/0061/1.0 FTE/CC

Health Facilities

- Non State Position
David Schmitt-Culp
Project Manager
NPHF WO4198-4/3219/RE
- Non State Position
Jared Fitch
Health Facilities Inspector
NPHF/WO4198-4/3219/CC
- Non State Position
Chidinma Njoku
Health Facilities Inspector
NPHF/WO4198-4/3219/LV

Division of Public & Behavioral Health
 Community Services
 Office of Public Health Investigations
 (OPHIE)
 June, 2018



Division of Public & Behavioral Health
 Community Services
 Office of Analytics
 June, 2018

Julie Kotchevar
 Division Administrator (U)
 3223/0721/1.0 FTE/CC

Kyra Morgan
 Chief Biostatistician (U)
 3219/0396/1.0 FTE/CC

Jane Dreiling
 Administrative Assistant 3, Gr.27
 3219/0047/1.0 FTE/CC

Andrea Rivers
 Health Program Manager 2, Gr. 39
 3219/0101/1.0 FTE/CC

Vacant
 Health Resource Analyst 3, Gr. 38
 3279/0640/1.0 FTE/CC

Jeff Stroup
 Economist 3, Gr. 38
 3158/0046/1.0 FTE/CC

Jennifer Thompson
 Health Program Specialist 2, Gr. 37
 3170/0016/1.0 FTE/CC

Alexia Benshoof
 Management Analyst IV, Gr. 39
 3143/9000/1.0 FTE/CC

Isaac Humpherys
 Economist 3, Gr. 38
 3158/1702/1.0 FTE/CC

Carmen Ponce
 Biostatistician 2, Gr. 35
 3153/0011/1.0 FTE/CC

Sandra Ochoa
 Biostatistician 2, Gr.35
 3219/0031/1.0 FTE/CC

Sneha Ravikumar
 Health Program Specialist 2, Gr. 37
 3170/0016/1.0 FTE/CC

Stephen Dotter
 Management Analyst I, Gr. 33
 3143/0506/1.0 FTE/CC

Vacant
 Management Analyst 3, Gr. 37
 3158/0067/1.0 FTE/CC

Helen See
 Biostatistician 2, Gr. 35
 3219/0507/1.0 FTE/CC

Amy Lucas
 Health Resource Analyst 1, Gr.32
 3119/0014/1.0 FTE/CC

Henry Agbewali
 Biostatistician 2, Gr. 35
 3170/0119/1.0 FTE/CC

David Goldstein
 Statistician 2, Gr. 31
 3143/0042/1.0 FTE/CC

Yucui "Yurie" Liu
 Economist 2, Gr. 37
 3158/1703/1.0 FTE/CC

Jesse Wellman
 Biostatistician 2, Gr. 35
 3216/0401/1.0 FTE/CC

Ingrid Mburia
 Biostatistician 2, Gr.35
 3219/0113/1.0 FTE/CC

Vacant
 Biostatistician 2, Gr. 35
 3228/0120/

Sandra Atkinson
 Health Resource Analyst 2, Gr. 35
 3219/0062/1.0 FTE/CC

Vacant
 Health Resource Analyst 2, Gr. 35
 3219/0060/1.0 FTE/CC

Mina Mahmoudi
 Economist 1,
 Contractor 0.5 3158

Vacant
 Biostatistician 2, Gr. 35
 3228/2763/1.0 fye/cc

Mark Hanqiu
 Economist 1
 Contractor 0.5 3158

Michelle Khau
 Health Resource Analyst 2, Gr. 35
 3219/0116/1.0 FTE/CC

Vacant
 Health Resource Analyst 2, Gr.35
 3219/1.0 FTE

Doug Banghart
 Health Resource Analyst 2, Gr. 35
 3213/0014/1.0 FTE/CC

Jonathan Kotchevar
 Health Resource Analyst 2, Gr. 35
 3220/0115/1.0 FTE/CC

Melissa Madera
 Health Resource Analyst 2, Gr. 35
 3222/0509/1.0 FTE/CC

Alana Woodbury
 Health Resource Analyst 2, Gr. 35
 Contractor 3222

Division of Public & Behavioral Health
Community Services
Behavioral Health, Wellness and Prevention
Mental Health Administrative Programs
Behavioral Health Services Planning
June, 2018

