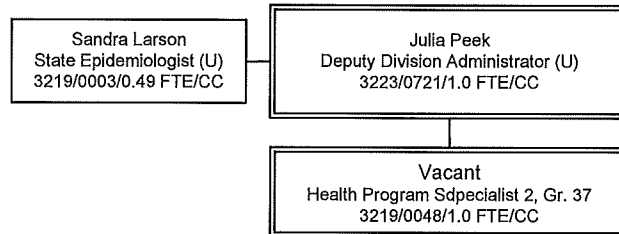


Division of Public & Behavioral Health
 Community Health
 Office of Public Health Investigations
 (OPHIE)
 October, 2018



Disease Investigation

Melissa Peek-Bullock
 State Epidemiologist (U)
 3219/0003/0.51 FTE/RE

Tami Conn
 Health Program Specialist I, Gr. 35
 3219/0117/1.0 FTE/CC

Cancer Registry

Christina Pool
 Health Program Specialist II, Gr. 37
 3153/0006/1.0 FTE/CC

Rani Reed
 Business Process Analyst II, Gr. 36
 3153/0012/1.0/FTE/CC

Catherina Short
 Cancer Control Specialist, Gr. 32
 3153/0010/1.0 FTE/LV

Lorraine Tooker
 Cancer Tumor Registrar Gr.32
 3153/0005/1.0/FTE/CC

Non State Position
 Nina Shaffer
 Cancer Registrar Specialist
 MHM/3153/0021/CC

Non-State Position
 Jane Saavedra
 Cancer Registrar Specialist
 MHM/3153/0021/CC

Non State Position
 Dolores Perez-Cowlshaw
 Cancer Registrar Specialist
 MHM/3153/0021/CC

Administrative/Fiscal

Karen Felicetta
 Business Proc Analyst 2, Gr. 36
 3219/0118/1.0 FTE/CC

Tom Fletcher
 Management Analyst 2, Gr. 35
 3219/0115/1.0 FTE/CC

Petra Bartella
 Grants & Projects Analyst I, Gr. 35
 3219/0119/1.0/FTE/RE

Vacant
 Administrative Asst. II, Gr. 25
 3153/0008/1.0 FTE/CC

HIV/STD/TB

Danika Williams
 Health Program Specialist 2, Gr. 35
 3219/0042/1.0 FTE/CC

Susan McElhany
 Health Program Specialist 2, Gr. 35
 (underfill)
 3219/0004/1.0 FTE/LV

Elizabeth Kessler
 Health Program Specialist 1, Gr. 35
 (underfill)
 3219/0070/1.0 FTE/LV

Theron Huntamer
 Health Resource Analyst 2, Gr. 35
 3219/0061/1.0 FTE/CC

Health Facilities

[Empty box]

Non State Position
 David Schmitt-Culp
 Project Manager
 NPHF/WO4198-4/3219/RE

Non State Position
 Jared Fitch
 Health Facilities Inspector
 NPHF/WO4198-4/3219/CC

Non State Position
 Chidinma Njoku
 Health Facilities Inspector
 NPHF/WO4198-4/3219/LV

Division of Public & Behavioral Health
 Community Health
 Office of Public Health Investigations
 (OPHIE)
 October, 2018

