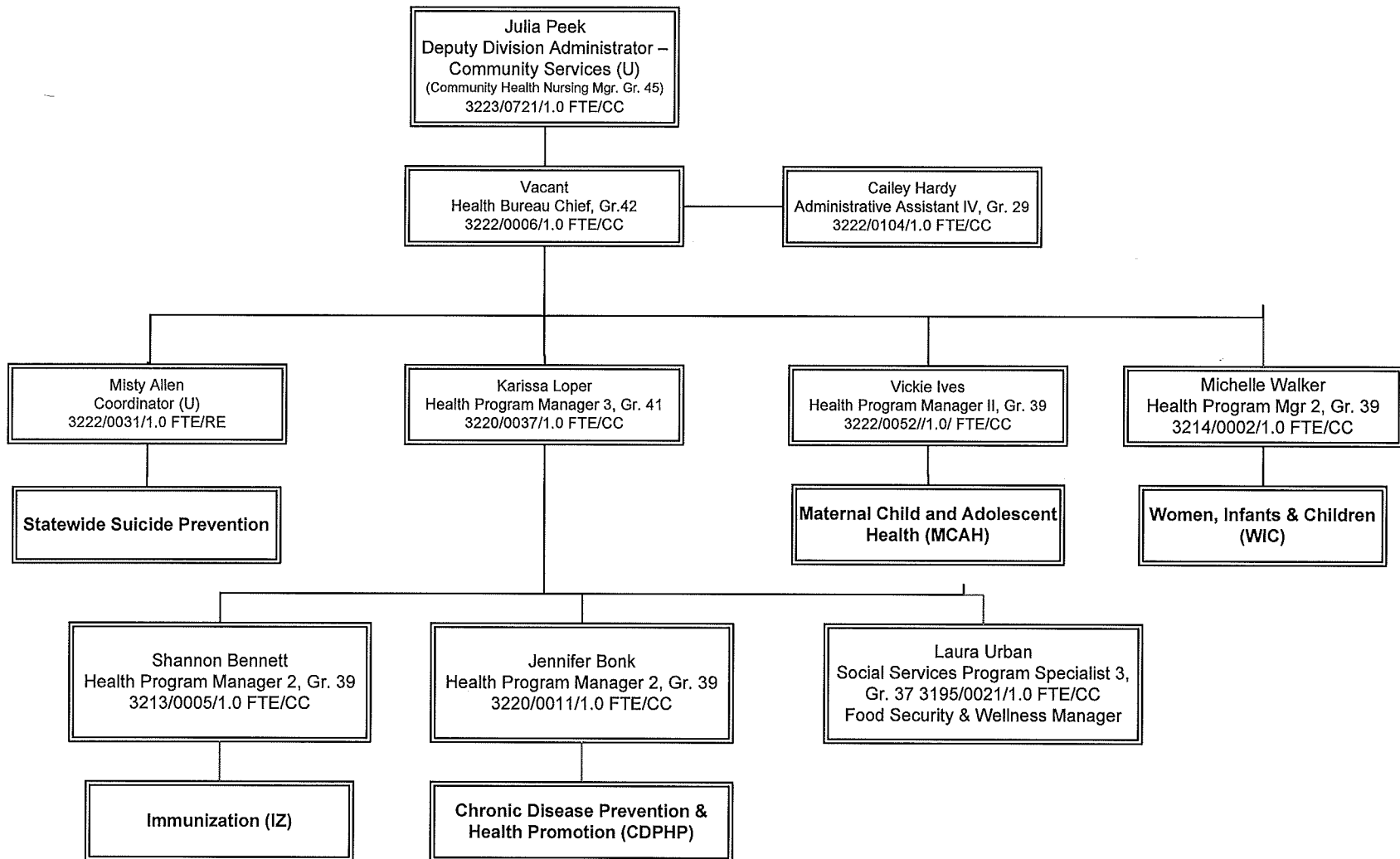
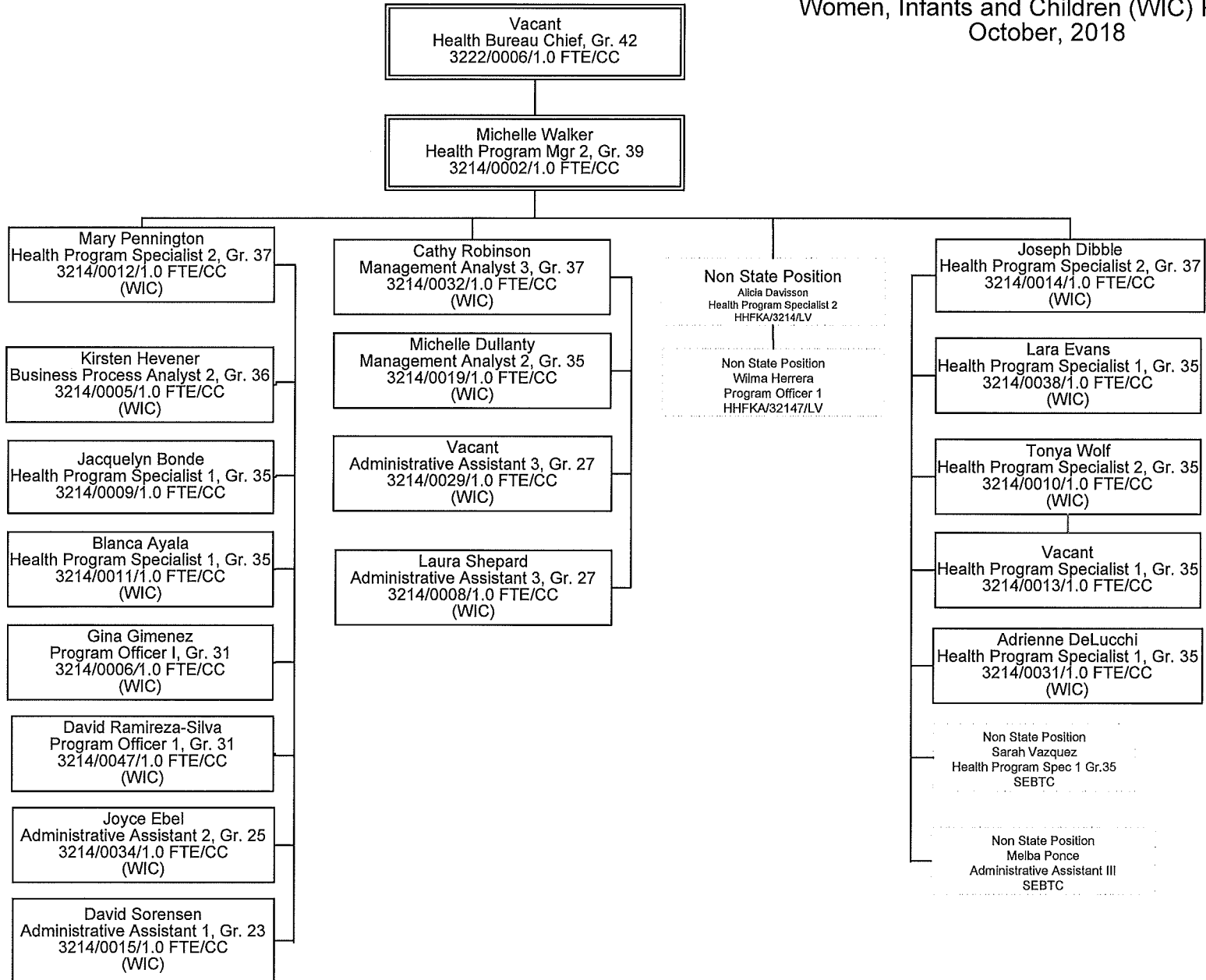


Division of Public & Behavioral Health  
 Community Health  
 Bureau of Child, Family and Community Wellness  
 October, 2018



Division of Public & Behavioral Health  
 Community Health  
 Bureau of Child, Family and Community Wellness  
 Women, Infants and Children (WIC) Program  
 October, 2018



Division of Public & Behavioral Health  
 Community Health  
 Bureau of Child, Family and Community Wellness  
 Maternal, Child & Adolescent Health  
 October, 2018

Vacant  
 Health Bureau Chief, Gr. 42  
 3222/0006/1.0 FTE/CC

Vickie Ives  
 Health Program Mgr 2, Gr. 39  
 3222/0052/1.0 FTE/CC

McKenna Bacon  
 Administrative Asst. 3 Gr. 27  
 3222/0055/1.0 FTE/CC  
 (MCAH)

Misty Allen  
 Statewide Suicide Prevention  
 Coordinator (U)  
 3222/0031/1.0 FTE/RE

Richard Egan  
 Statewide Suicide Prevention  
 Trainer Fac. (U)  
 3222/0030/1.00 FTE/LV

Non State Position  
 Florece Bolden  
 AWARE Admin Assistant  
 Manpower/3222-0019/CC  
 BCFCW/Suicide Prev

Angela Friedman  
 Administrative Assistant 4, Gr. 29  
 3222/0033/1.0 FTE/RE

Janett Massolo  
 Statewide Suicide Prevention  
 Trainer Fac. (U)  
 3222/0032/1.0 FTE/RE

Non State Position  
 Susan Ripsom  
 Youth Mental Health First Aid  
 Coord.  
 3222/CC

Vacant  
 Management Analyst 2 Gr. 35  
 3222/0503/1.0 FTE/CC  
 (MCH-Fiscal)

Non State Position  
 Vacant  
 Health Program Specialist 1  
 3222/CC  
 PREP

Non State Position  
 Aundrea Ogushi  
 Program Officer 2  
 3222/CC  
 AEGP

Non State Position  
 Cecilia Flores  
 Administrative Assistant 2  
 3222/CC  
 PRAMS/AEGP

Non State Position  
 Christabell Sotelo-Zecena  
 Grants & Projects Analyst 1  
 3222/CC  
 PRAMS/AEGP

Brian DeValliere  
 Health Program Mgr 1, Gr. 37  
 3222/0114/1.0 FTE /CC  
 (MCH)

Christina Turner  
 Health Program Specialist 1, Gr. 35  
 3222/0103/1.0 FTE/CC  
 (Maternal & Infant)

Deborah Duchesne  
 Health Program Specialist 1, Gr. 35  
 3222/0066/1.0 FTE/CC  
 (MCH/RPE)

Vacant  
 Health Program Specialist 2, Gr. 35  
 3222/0071/1.0 FTE (CC)  
 (MCH-EPI)

Eileen Hough  
 Health Program Specialist 1, Gr. 35  
 3222/0063/1.0 FTE (CC)  
 (Metabolic)

Non State Position  
 Vacant  
 Health Program Specialist 1  
 MHM/3233/CC

Evelyn Dryer  
 Health Program Specialist 2 Gr 37  
 3222/0515/1.0/FTE/CC  
 Home Visiting

Charlotte Andreasen  
 Health Program Specialist 1 Gr 35  
 3222/0508/1.0/FTE/CC  
 Home Visiting

Melissa Madera  
 Health Program Specialist II Gr 35  
 3222/0509/1.0/FTE/CC  
 Home Visiting

Jennifer Quihuis  
 Management Analyst 2 Gr 35  
 3222/0510/1.0/FTE/CC

Rachel Hunter  
 Administrative Assistant I Gr. 23  
 3222/0511/1.0 FTE (CC)  
 Home Visiting

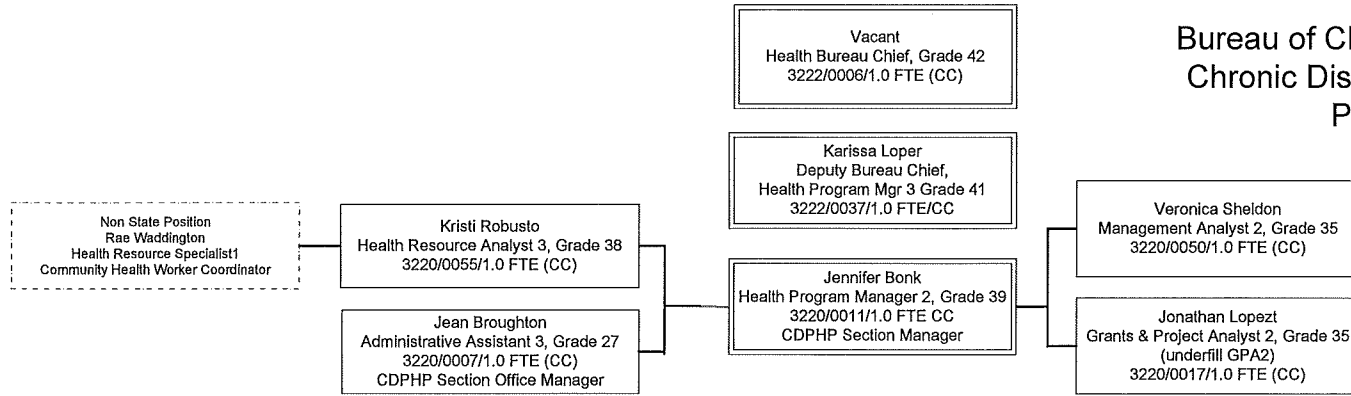
Perry Smith  
 Health Program Specialist 1, Gr. 35  
 3222/0070/1.0 FTE/CC  
 EHDl

Cecilia Flores-Mendez  
 Administrative Asst. 2, Gr. 25  
 3222/0506/1.0 FTE/CC  
 EHDl

Non State Position  
 Alana Woodbury  
 Health Resource Analyst I  
 MHM3222/CC

Non State Position  
 Diane Miller  
 Contracted Audiologist  
 EHDl

Division of Public & Behavioral Health  
 Community Health  
 Bureau of Child, Family and Community Wellness  
 Chronic Disease Prevention & Health Promotion  
 Promotion (CDPHP)Section  
 October, 2018



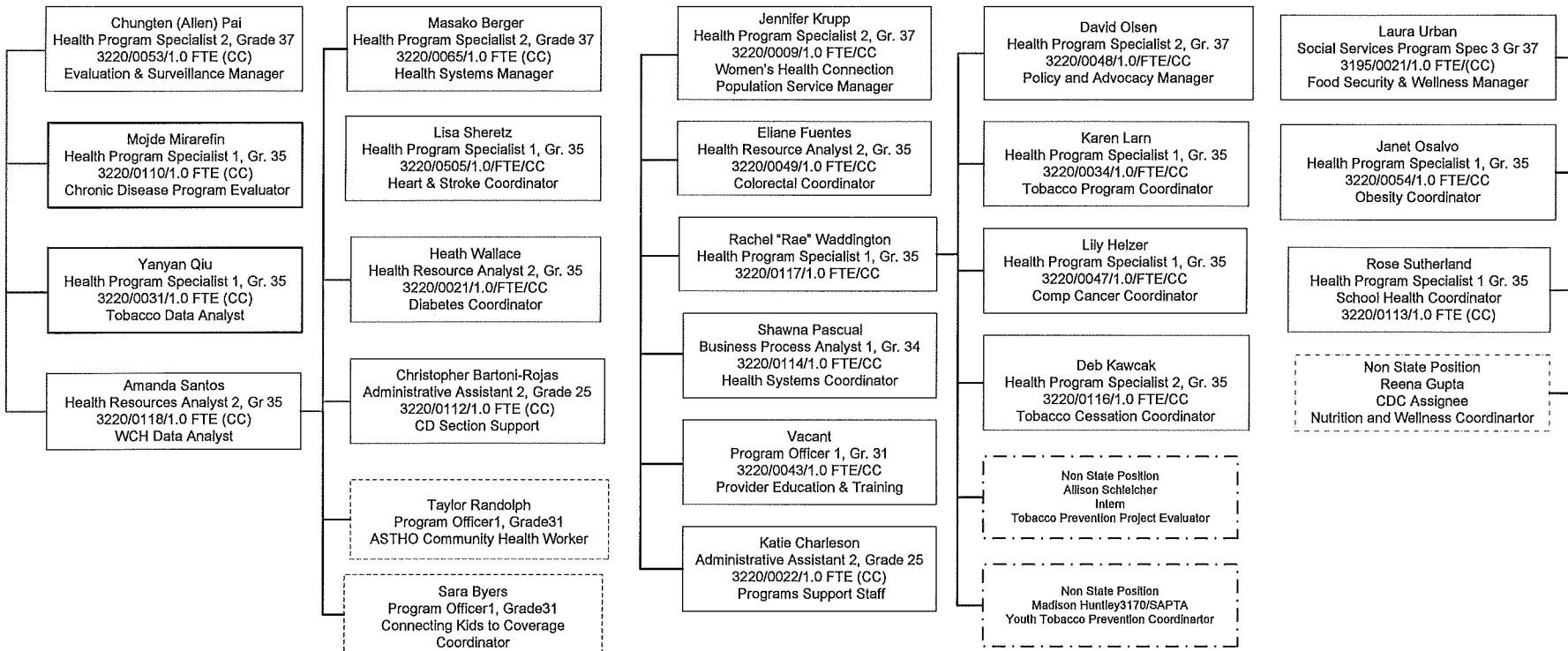
**Evaluation & Surveillance**

**Health System Interventions**

**Clinical & Community Services**

**Policy Systems & Environmental Change**

**Office of Food Security and Wellness**



Division of Public & Behavioral Health  
 Community Health  
 Bureau of Child, Family and Community Wellness  
 Immunization Program  
 October, 2018

