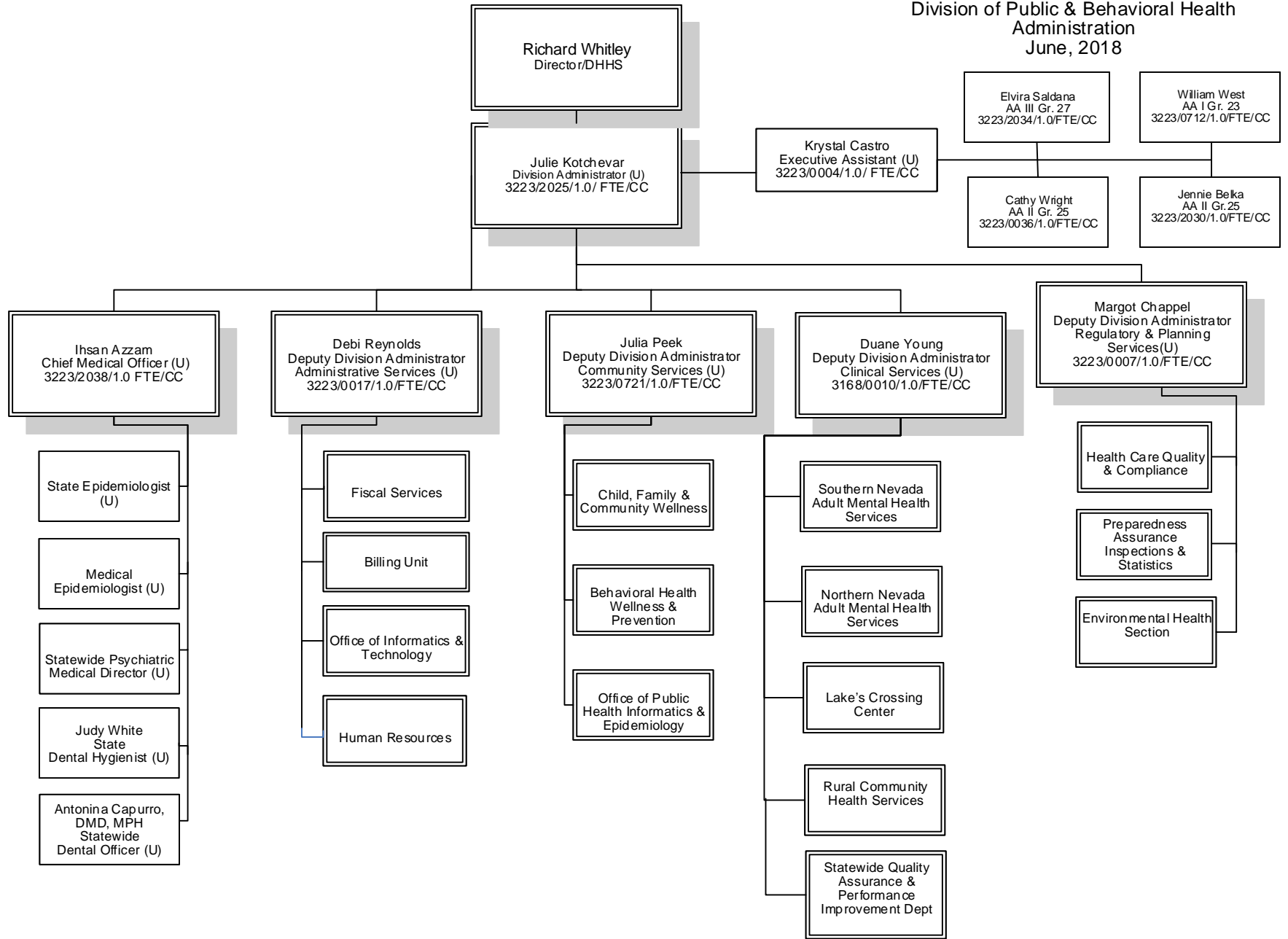
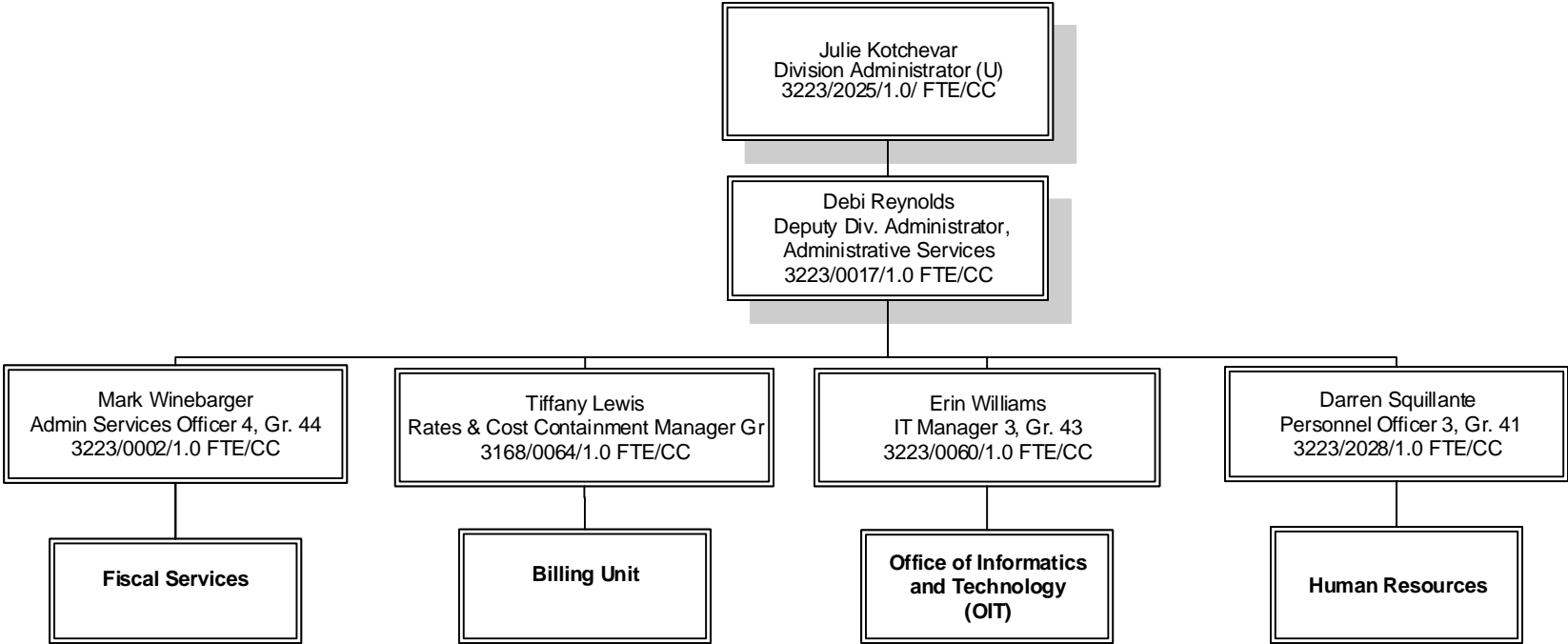


Department of Health and Human Services
 Division of Public & Behavioral Health
 Administration
 June, 2018



Division of Public & Behavioral Health
Administrative Services
June, 2018



Julie Kotchevar
Division Administrator (U)
3223/2025/1.0/ FTE/CC

Debi Reynolds
Deputy Administrator (U)
Administrative Services
3223/0017/1.0 FTE/CC

Tiffany Lewis
Rates & Cost Containment Manager Gr. 41
3168/0064/1.0 FTE/CC

BILLING

ACCOUNTS RECEIVABLES

DENIAL MANAGEMENT

COST ALLOCATION

Annette Gatlin
Management Analyst 2, Gr. 35
3168/0018/1.0 FTE/CC

Vacant
Accounting Tech 1, Gr. 30
3223/0206/1.0 FTE/CC

Wendy Nicora
Accounting Assistant 3, Gr. 27
3168/0112/1.0 FTE/CC

Francisca Obregon
Accounting Assistant 3, Gr. 27
3168/0871/1.0 FTE/CC

Aaron Schoch
Management Analyst 2, Gr. 35
3168/0066/1.0 FTE/CC

Sangitalaxmi Kalakonda
Accounting Assistant 2, Gr.25
3168/0867/1.0 FTE/CC

Lisa Light
Accounting Assistant 2, Gr. 25
3168/1378/1.0 FTE/CC

Catherine Wold
Accounting Assistant 2, Gr. 25
3168/1522/1.0 FTE/CC

Vacant
Accountant Technician 1, Gr.30
3168/0262/1.0 FTE/CC

Kathleen Kopp
Accounting Assistant 2, Gr. 25
3168/0915/1.0 FTE/CC

David Lenzner
Admin. Services Officer 2, Gr. 39
3223/2029/1.0 FTE/CC

Brooke Barlow
Budget Analyst 3, Gr 38
3223/0006/1.0 FTE/CC

Paul Ripple
 Admin. Services Officer 3, Gr. 41
 3161/0001/1.0 FTE/LV

D. Kurt Green
 Admin. Services Officer 3, Gr. 41
 3162/0002/1.0 FTE/CC

Debi Reynolds
 Deputy Div. Administrator, Admin. Services
 3223/0017/1.0 FTE/CC

Mark Winebarger
 Admin Services Officer 4, Gr. 44
 3223/0002/1.0 FTE/CC

Budget

Accounting

Grants Management Unit

Contract Unit

Gary Long
 Admin. Services Officer 3, Gr. 41
 3223/0849/1.0 FTE/CC

Sue Genzler
 Management Analyst 3, Gr. 37
 3223/0008/1.0 FTE/CC

Stacy Harris
 Management Analyst 3, Gr. 37
 3223/0506/1.0 FTE/CC

Philene O'Keefe
 Admin. Services Officer 1, Gr. 37
 3223/0515/1.0 FTE/CC

Richard Jacobs
 Admin Services Officer 1, Gr. 37
 3223/1030/1.0 FTE/CC

Mitchell Varner
 Admin. Services Officer 1, Gr. 37
 3223/0118/1.0 FTE/CC

Karen Salm
 Management Analyst 3, Gr. 37
 3223/2036/1.0 FTE/CC

Michael Urban
 Management Analyst 3, Gr. 37
 3223/0933/1.00/CC

Wendy Koch
 Management Analyst 4, Gr. 39
 3223/0320/1.0 FTE/CC

Judith Bray
 Accounting Assistant 3, Gr. 27
 3223/0518/1.0 FTE/CC

Mary Milstead
 Accounting Assistant 3, Gr. 27
 3223/0514/1.0 FTE/CC

Christine Goetz
 Accounting Assistant 3, Gr. 27
 3223/0109/1.0 FTE/CC

Carol Hamlin
 Accounting Assistant 3, Gr. 27
 3223/0516/1.0 FTE/CC

Tammy Hohenstein
 Accounting Assistant 3, Gr. 27
 3223/0205/1.0 FTE/CC

Sherry Aseph
 Accounting Assistant 3, Gr. 27
 3223/0513/1.0 FTE/CC

Pamela Lee
 Accounting Assistant 2, Gr. 27
 3223/2035/1.0 FTE/CC

Emily deBoer
 Accounting Assistant 3, Gr. 27
 3223/0108/1.0 FTE/CC

Gupta Veethika
 Accounting Assistant 3, Gr. 27
 3223/0517/1.0 FTE/CC

Mindi Eaton
 Accounting Assistant 2, Gr. 25
 3223/0037/1.0 FTE/CC

Michele Silzell
 Management Analyst 4, Gr. 39
 3223/2031/1.0 FTE/CC

Vacant
 Management Analyst 3, Gr. 37
 3223/2027/1.0 FTE/CC

Michelle Travers
 Management Analyst 2, Gr. 35
 3223/0714/1.0 FTE/CC

Annette Finch
 Management Analyst 2, Gr. 35
 3223/0715/1.0 FTE/CC

Linda Marantette
 Management Analyst 2, Gr. 35
 3223/0713/1.0 FTE/CC

April Romo
 Management Analyst 2, Gr. 35
 3223/0716/1.0 FTE/CC

Jamie Florence
 Management Analyst 2, Gr. 35
 3223/0590/1.0 FTE/CC

Sophia LaBranch
 Management Analyst 2, Gr. 35
 3223/0100/1.00 FTE/CC

Bandi Huckabay
 Management Analyst 1, Gr. 33
 3223/0216/1.0 FTE/CC

Kelli Quintero
 Admin. Services Officer 3, Gr. 41
 3223/0003/1.0 FTE/CC

Sharon Usher
 Accounting Assistant 3, Gr. 27
 3223/0511/1.0 FTE/CC

Jeremy Walkama
 Accountant Technician 2, Gr. 32
 3223/2032/1.0 FTE/CC

Leelavathi Tenneti
 Accountant Technician 2, Gr. 32
 3223/0580/1.0 FTE/CC

Martha Green
 Accounting Technician 2, Gr. 30
 3223/0512/1.0 FTE/CC

Richard Morse
 Management Analyst 3, Gr. 37
 3223/0590/1.0 FTE/CC

Deborah Ohl
 Program Officer 2, Gr. 33
 3223/2033/1.0 FTE/CC

Division of Public & Behavioral Health
 Administrative Services
 Office of Informatics and Technology
 June, 2018

Debi Reynolds
 Deputy Div. Administrator,
 Admin. Services
 3223/0017/1.0 FTE/CC

Erin Williams
 Chief IT Manager
 IT Manager 3, Gr. 44
 3223/0060/1.0 FTE/CC

Mary Lou Flanagan
 Office Manager
 Admin. Assistant 2, Gr. 25
 3223/0592/1.0 FTE/CC

Field & Technical Services: Networking
 Anedrea Hodges
 IT Manager 2, Gr. 42
 3223/0603/1.0 FTE/CC

Information Security Office
 Michael Kennedy
 IT Professional 6, Gr. 38
 3223/0904/1.0 FTE/CC

Applications & Databases Manager
 Mark Foxen
 IT Professional 4, Gr. 41
 3223/0016/1.00 FTE/CC

Projects Management/IT Operations
 Amber Little
 IT Manager 1, Gr. 42
 3223/0716/1.0 FTE/LV

Kimberly Rose-Brown
 IT Professional 3, Gr. 39
 3223/0030/1.0 FTE/LV

Justin Harris
 Bus.Proc.Analyst 2, Gr 36
 3223/0020/1.0 FTE/CC

Vacant
 IT Professional 2, Gr. 37
 3223/0210/1.00 FTE/CC

AVATAR TEAM
 Michael Buccambuso
 IT Professional 3 Gr. 40
 3168/0065/1.0 FTE/SP

Denise Madera
 IT Professional 3, Gr. 40
 3223/0018/1.0 FTE/CC

Lorraine McMullen
 IT Professional 3, Gr. 40
 3223/0115/1.0 FTE/CC

Sheri Haggerty
 Bus.Proc.Analyst 2, Gr 36
 3170/0008/1.0 FTE/CC

FIELD & TECH SER

Darrell Brown
 IT Professional 3, Gr. 39
 3223/0190/1.0 FTE/CC

Erik Kelliher
 IT Technician Spvs Gr 37
 3223/1032/1.0 FTE/CC

Robert Beckley
 IT Professional 3, Gr. 39
 3223/0011/1.0 FTE/CC

Mark Rutter
 IT Technician 6, Gr. 35
 3223/1989/1.0 FTE/LV

Tyler Hopkins
 IT Technician 6, Gr. 35
 3223/1400/1.0 FTE/CC

Frank Lazzarino
 IT Technician 6, Gr. 35
 3223/0905/1.0 FTE/CC

Sarah Quick
 IT Technician 2, Gr. 37
 3150/0090/1.0 FTE/CC

Brian Guinaran
 IT Technician 5, Gr. 33
 3223/10104/1.0 FTE/LV

Nicole Jones-Shore
 IT Technician 5, Gr. 34
 (Underfill for IT5)
 3223/0591/1.0 FTE/CC

Jeremy Stipech
 IT Technician 3, Gr. 30
 3223/0050/1.0 FTE/CC

VIDEO CONFERENCING

Brent Geerhart
 IT Technician 6, Gr. 35
 3223/0600/1.0 FTE/CC

Michael Viego
 IT Technician 5, Gr. 33
 3223/0063/1.0 FTE/LV

Robert Miller
 IT Technician 5, Gr. 34
 3223/1033/1.0 FTE/CC

Anthony Blue
 IT Technician 3, Gr 29
 3223/0990/1.0 FTE/LV

Brian Heward
 IT Technician 5, Gr. 33
 3223/10132/1.0 FTE/CC

James Brown
 IT Technician 5, Gr. 33
 3223/0882/1.0 FTE/LV

James Biselli
 IT Technician 4, Gr. 32
 3223/1034/1.0 FTE/LV

Cody Ross
 IT Technician 2, Gr. 28
 3223/0726/1.0 FTE/CC

MSA CONTRACTORS

Non State Position
 Doug Hooper
 Sr Programmer/Analyst
 MSA 3223

Non State Position
 Vacant
 Programmer/Analyst
 MSA/3223

Rachel Potter
 Admini Assistant 2, Gr. 25
 3170/0005/1.0 FTE/SP

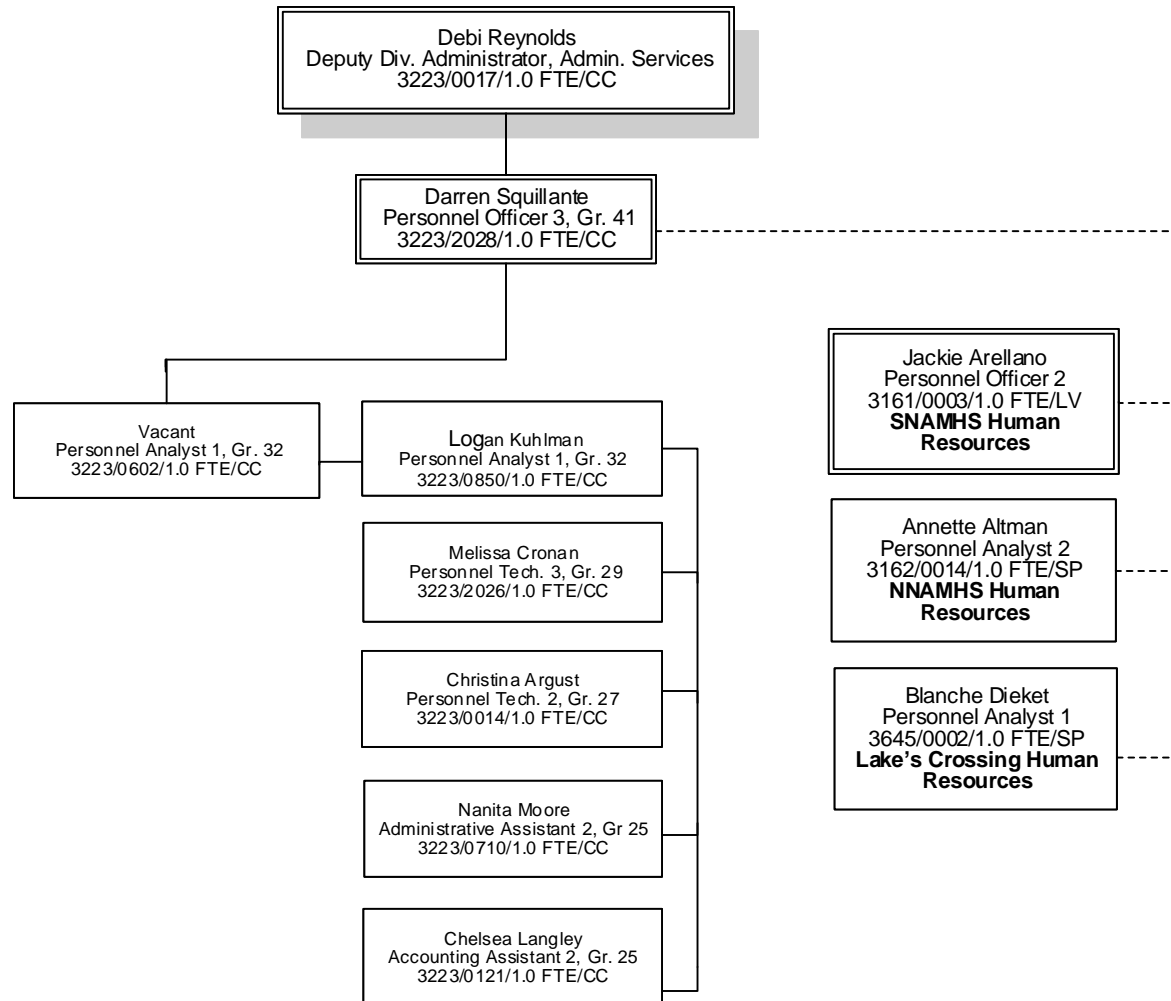
Stacy King
 IT Professional 3, Gr. 40
 3223/0737/1.0 FTE/LV

Nadine Ow
 IT Professional 2, Gr. 38
 3168/0111/1.0 FTE/SP

MSA CONTRACTORS

Non State Position
 Robert DeMarco
 MSA Project Manager
 B/A 3170

Non State Position
 Christina Caire
 MSA Project Manager
 B/A 3223



Division of Public & Behavioral Health Organizational Chart Legend

FTE Full Time Equivalency
Gr. Grade

Locations:

BM Battle Mountain
CC Carson City
CL Caliente
DA Dayton
EK Elko
EL Ely
FA Fallon
FE Fernley
GA Gardnerville
HA Hawthorne
HE Henderson
LA Laughlin
LO Lovelock
LV Las Vegas
ME Mesquite
PA Pahrump
RE Reno
SP Sparks
SS Silver Springs
TO Tonopah
WI Winnemucca
YE Yerington

_____ Supervisory relationship

- - - - - Secondary supervisory/collaborative relationship/clinical supervision

xxxx/xxxx "Four digit budget account"/"position control number"

Name Title

 Executive position

Name Title

 Manager position or Program

Name Title

 Position other than Exec., Manager or Contract

Name Title

 Contract/temporary agency contracted position