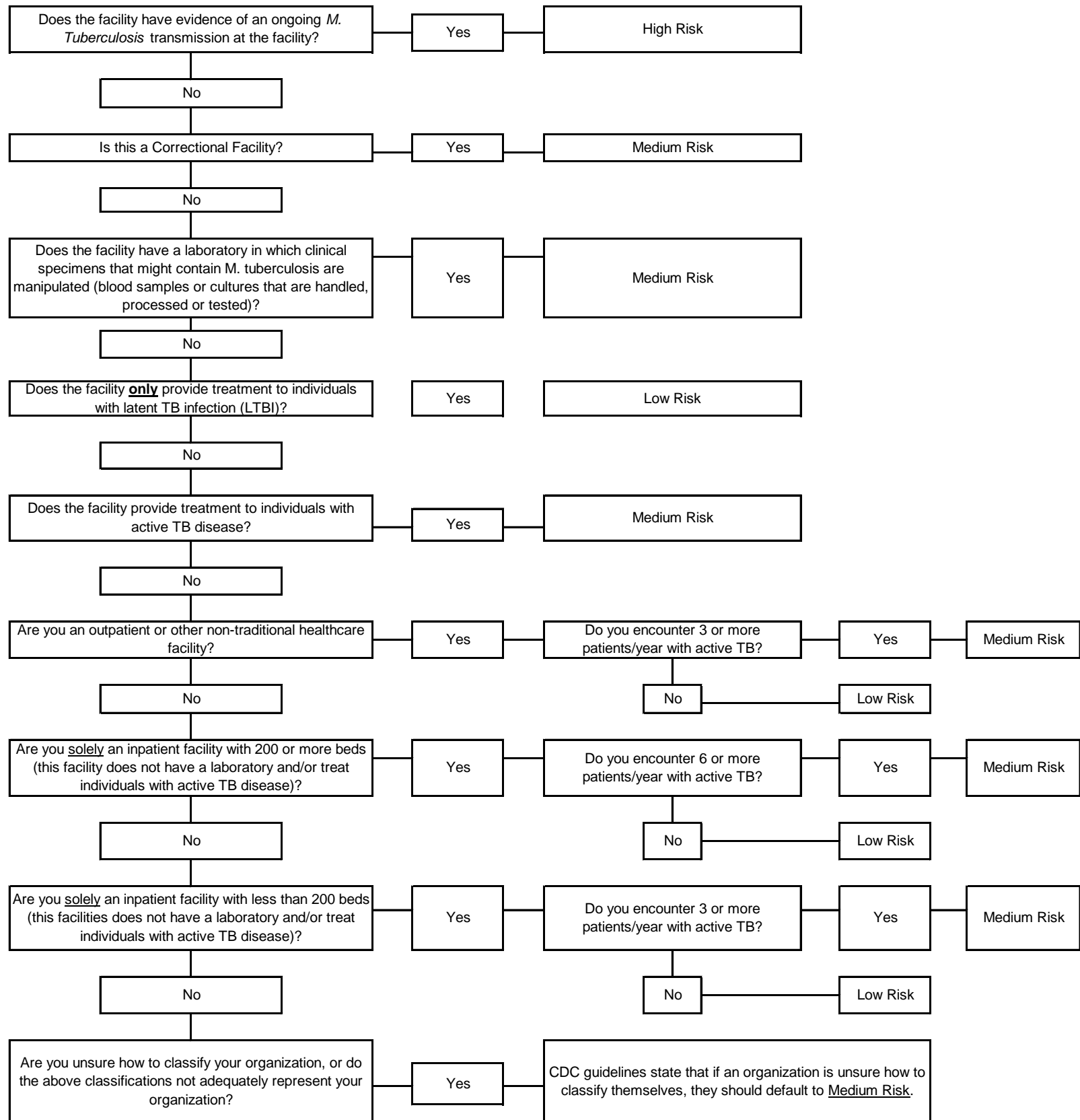


Tuberculosis Risk Classification Determination



*All healthcare facilities (medical facilities, facilities for the dependent, homes for individual residential care and outpatient facilities) must perform a TB test before hire and annually on all of their healthcare workers (HCWs). For a list of who the CDC considers as a healthcare worker, see page 5 <http://www.cdc.gov/mmwr/PDF/rr/rr5417.pdf>. A healthcare facility may choose to do an annual Risk Assessment in lieu of performing the healthcare workers annual TB test to determine if the facility qualifies for a lesser frequency of TB testing; however, completion of the CDC Risk Assessment Worksheet does not guarantee that a healthcare facility qualifies for a lesser frequency of TB testing (NAC 441.375).

1.) The Nevada Tuberculosis Program requires that CDC's Risk Assessment Worksheet (Appendix B) is the sole document that may be used by a healthcare facility to determine their TB Risk Classification. The document can be found at <http://www.cdc.gov/mmwr/PDF/rr/rr5417.pdf>.

2.) CDC guidelines state that a facility must consider all units (entire facility) when determining the risk classification for a setting (e.g. hospitals). The CDC guidelines recommends that only one risk classification be determined for the entire setting; however, healthcare organizations that encompass multiple sites or types of services may need separate risk classifications (page 10, <http://www.cdc.gov/mmwr/PDF/rr/rr5417.pdf>).

All language in this document for the Nevada Tuberculosis Program is based on the Nevada Administrative Code (NAC), Nevada Revised Statutes (NRS), and the Centers for Disease Control and Prevention's 2005 MMWR report (Vol. 54/RR-17) "Guidelines for Preventing the Transmission of *Mycobacterium Tuberculosis* in Health-Care Settings."

Tuberculosis Risk Classification Determination

For additional information regarding this publication, contact:

State of Nevada Tuberculosis Controller
Office of Public Health Informatics and Epidemiology
Division of Public and Behavioral Health
3811 W. Charleston Ste. 205
Las Vegas NV 89102
Phone: (702) 486-0089

Funding Source:

This publication was supported by a grant (CDC-RFA-PS15-1501) funded by the Centers for Disease Control and Prevention. Its contents are solely the responsibility of the authors and do not necessarily represent the official views of the Centers for Disease Control and Prevention or the Department of Health and Human Services.