

Influenza Weekly Report

2015 Week 6 (February 8 – 14) through 2016 Week 6 (February 7 – 13)

Department of Health and Human Services
Division of Public and Behavioral Health
Office of Public Health Informatics and Epidemiology



Brian Sandoval
Governor
State of Nevada

Richard Whitley, MS
Director
Department of Health and Human Services

Cody L. Phinney, MPH
Administrator
Division of Public and Behavioral Health

Tracey D Green, MD
Chief Medical Officer
Division of Public and Behavioral Health

*February 2016
Edition 1.0*

Data for the graphs and tables on the following pages are provisional and may be updated as additional information becomes available.

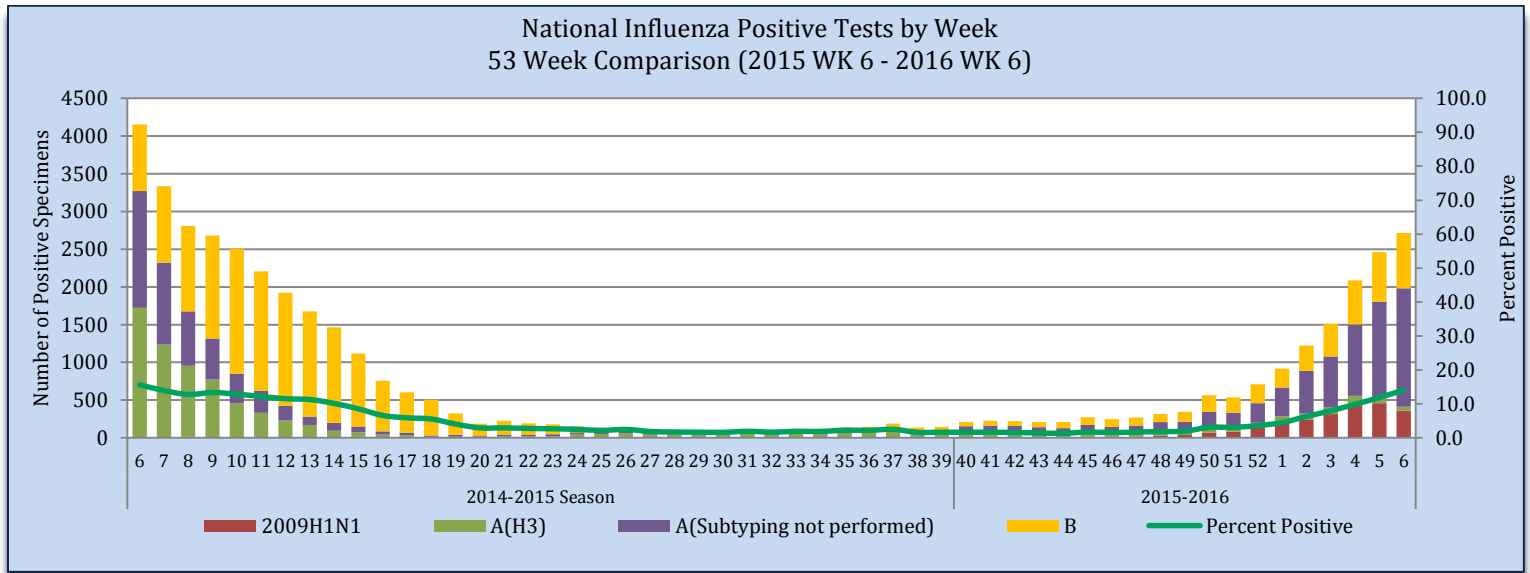
Purpose

The purpose of this report is to provide an overview of and statistics for the influenza season in Nevada for the local public health authorities, sentinel providers and the public.

Influenza-Like Illness Network Surveillance (ILINet)

Respiratory specimens are tested for influenza by the World Health Organization (WHO) and National Respiratory and Enteric Virus Surveillance System (NRVESS) collaborating laboratories by sub-type. During week 6, there were 19,328 specimens collected and tested for influenza, of those 2,715 were positive (14.0%).

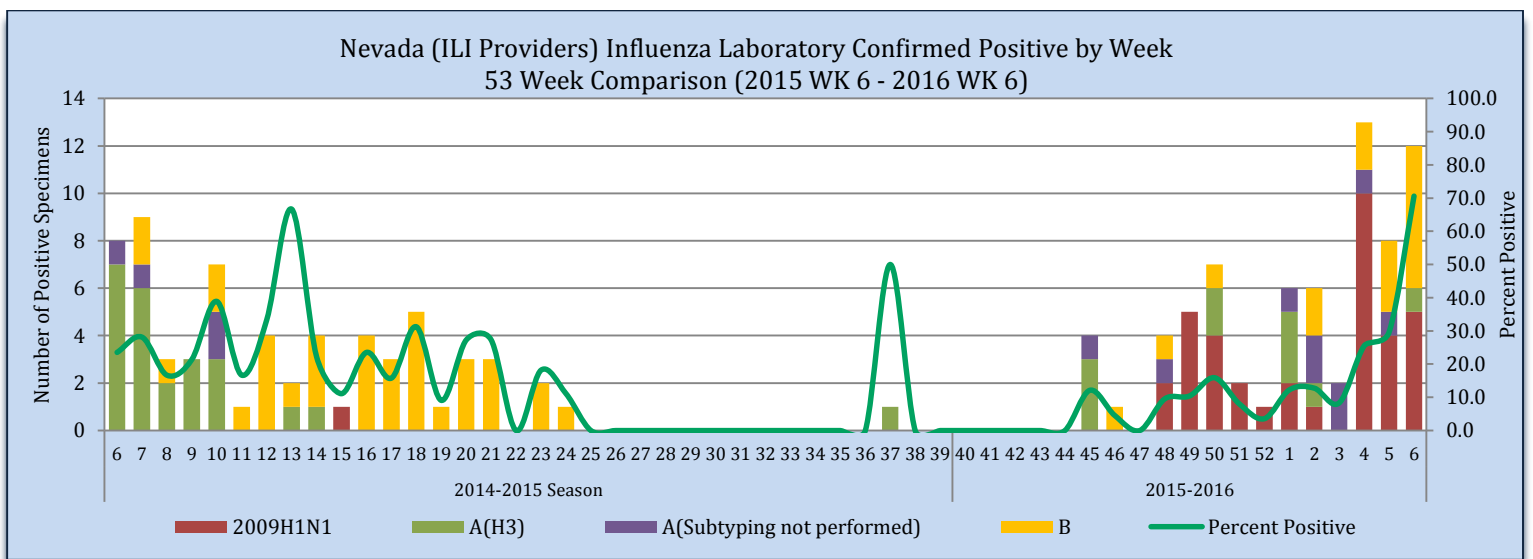
Figure 1



Source of Data: CDC: FluView Weekly Report.

The Nevada total includes laboratory tests for all Nevada residents including out of state laboratories. During week 6, there were 17 specimen collected and tested for influenza of which 12 was positive (70.6%).

Figure 2



Source of Data: CDC: ILINet.

Nevada State Public Health Laboratory (NSPHL) has tested 78 specimens for influenza from sentinel providers, of which there have been 38 positive (48.7%). Southern Nevada Public Health Laboratory (SNPHL) has tested 172 specimens this season of which there have been 8 positive (4.7%). Nationally, there have been 329,044 specimens sent to the WHO and NERVSS laboratories of which 15,234 have been positive or 4.6%. The national numbers in Table 1 are reflected in Figure 1. The state of Nevada data in Table 1 is reflected in Figure 2. The Nevada total includes laboratory test for all Nevada residents including out of state laboratories.

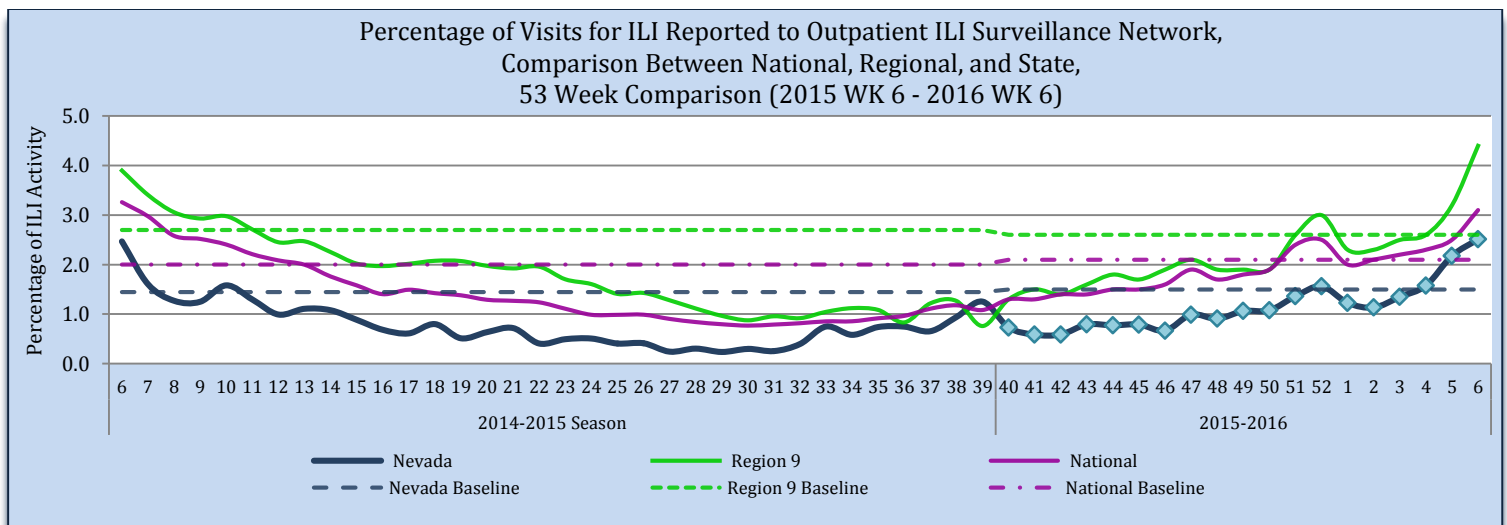
Table 1

ILINet Surveillance: Influenza Specimens Tested State and Nationally										
	NSPHL	SNPHL	State of Nevada (Week 6)		State of Nevada (Season)		National (Week 6)		National (Season)	
			#	%	#	%	#	%	#	%
Specimens Tested	78	172	17	-	588	-	19,328	-	329,044	-
Positives to Influenza	38	8	12	70.6	71	12.1	2,715	14.0	15,234	4.6
Influenza A:	24	8	6	50.0	55	77.5	1,982	73.0	10,691	70.2
A (2009 H1N1)	16	8	5	83.3	36	65.5	361	18.2	2,459	23.0
A (H3)	8	0	1	16.7	10	18.2	51	2.6	980	9.2
A (Sub-typing not performed)	0	0	0	0.0	9	16.4	1,570	79.2	7,252	67.8
Influenza B:	14	0	6	50.0	16	22.5	733	27.0	4,543	29.8
B (Victoria Linage)	7	0	3	50.0	7	43.8	27	3.7	178	3.9
B (Yamagata Linage)	7	0	3	50.0	8	50.0	63	8.6	531	11.7
B (Sub-typing not performed)	0	0	0	0.0	1	6.3	643	87.7	3,834	84.4

Source of Data: CDC: FluView Report and CDC: ILINet.

Influenza-like illness (ILI) Surveillance Network has each sentinel providers report the number of patients that meet the ILI case definition and number of patients that visit the provider weekly. The “percentage of visits” is the number of ILI patients divided by the total number of patients visit per week. Nevada’s ILI percentage of visits to providers for week 6 is 2.5% and is above the state baseline 1.5% the 3rd consecutive week. Region 9 ILI percentage for week 6 is 4.4% and is above the region baseline 2.6% for the 2nd consecutive week. Region 9 includes the following states/territory: Arizona, California, Guam, Hawaii, and Nevada. The national ILI percentage for week 6 is 3.1% and is above the national baseline 2.1% for the 4th consecutive week.

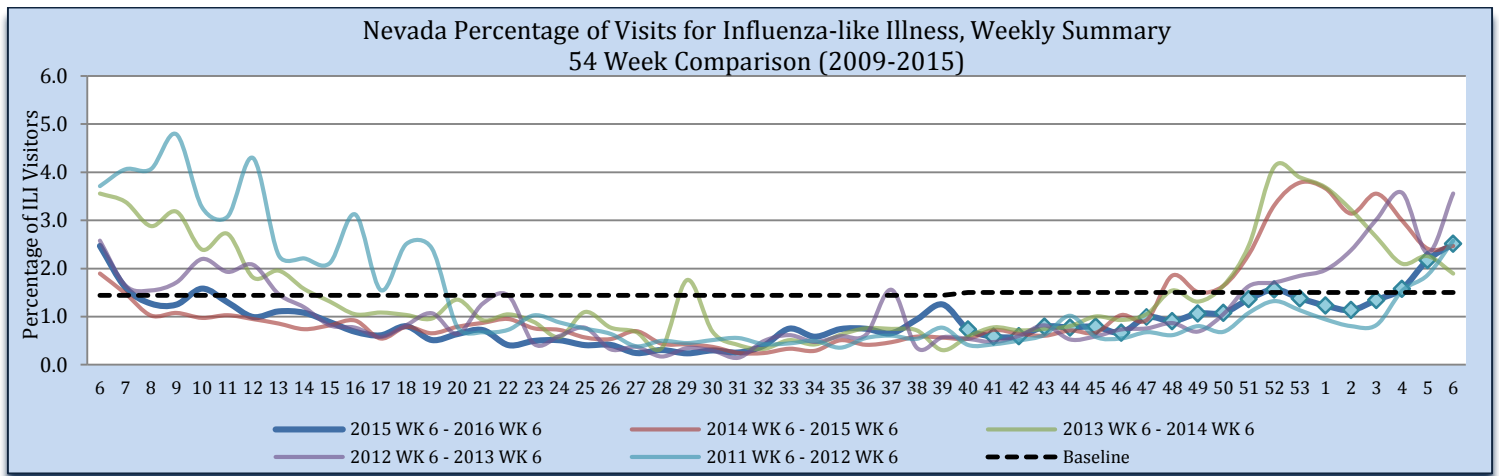
Figure 3



Source of Data: CDC: Flu View Report and CDC: ILINet.

During week 6, 2.5% of visits to sentinel providers were due to ILI; this is same at the 2014-2015 influenza season. There were 11,112 patients seen by ILI providers during week 6, of which 279 patients presented with ILI; week 6 of 2015, there were 453 patients seen with ILI (19,124 total patients seen). There was no week 53 in the previous influenza seasons displayed below; therefore the week 53 data point for those seasons is an average of week 52 and 1.

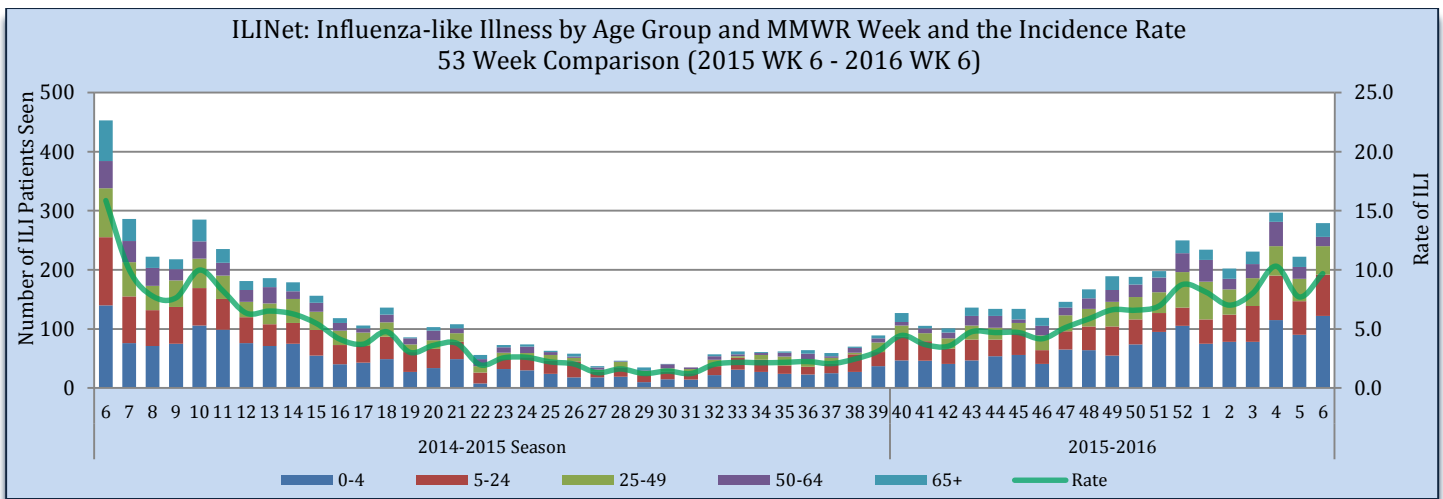
Figure 4



Source of Data: CDC: ILINet.

Influenza-like Illness is reported by age groups, during week 6, patients age 0-4 were the greatest number of patients seen with ILI, at 112 patients seen. The rate for week 6 is 9.7 per 100,000 population. The rate is calculated by the number of patients presented with ILI, divided by the state population, multiplied by 100,000. The estimated state population for 2016 is 2,880,169.

Figure 5



Source of Data: CDC: ILINet.

Influenza Positive Surveillance (NBS and NETSS)

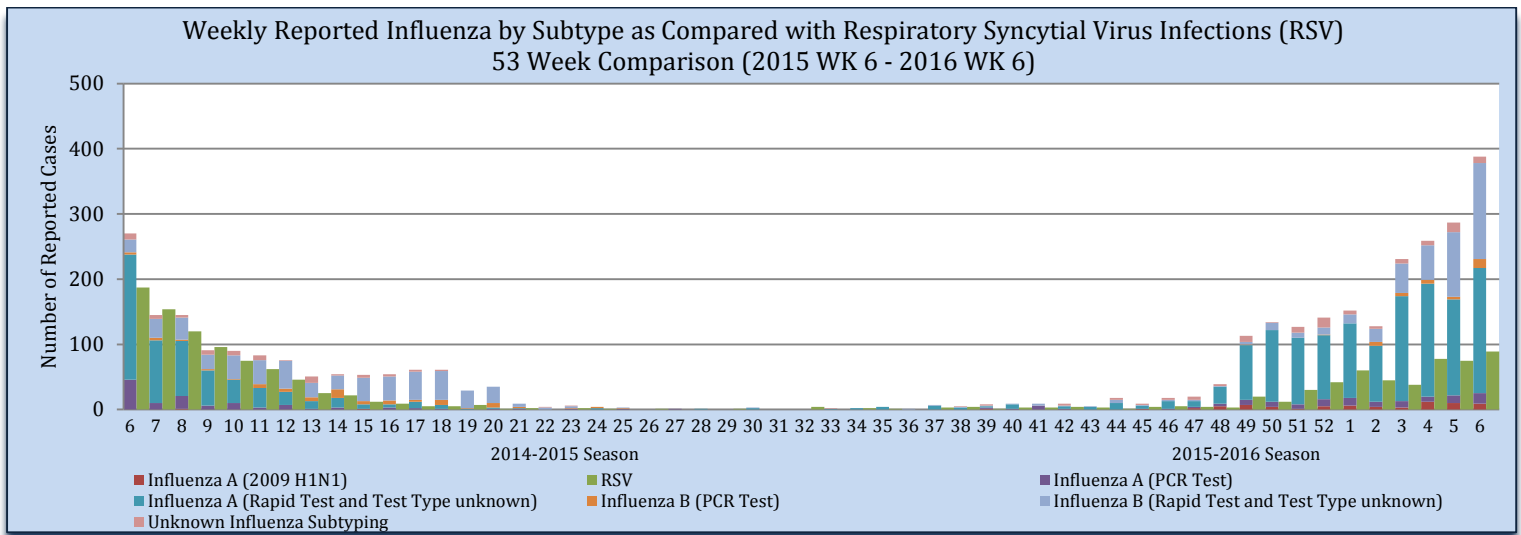
Positive cases of influenza are reported to the state health authority for surveillance purposes. Table 2 and Figure 6 reflect all positive influenza cases reported to the state. Types of influenza testing include commercial rapid diagnostic test (rapid), viral culture, fluorescent antibody, enzyme immunoassay, RT-PCR (PCR), and Immunohistochemistry. The two most common test types in Nevada are Rapid and PCR tests. During week 6, there were 379 influenza cases reported to the state, 8 H1N1 influenza A, 200 influenza A (H3 or unknown subtyping) and 161 influenza B case.

Table 2

Reporting Jurisdiction	Reported Influenza Cases by County Jurisdiction and Influenza Type									
	Current Week (Week 6)					Cumulative Influenza Season				
	H1N1	A	B	Unknown	Total	H1N1	A	B	Unknown	Total
Carson City Health and Human Services	0	15	37	0	52	0	74	76	0	150
Rural Community Health Services	3	3	11	0	17	7	31	38	1	77
Southern Nevada Health District	5	150	65	6	226	55	1,194	224	88	1,561
Washoe County Health District	0	32	48	4	84	1	164	129	14	308
State of Nevada	8	200	161	10	379	63	1,463	467	103	2,096

Source: OPHIE: NBS and SNHD: NETSS.

Figure 6



Source of Data: OPHIE: NBS and SNHD: NETSS.

Hospitalizations

There was 24 hospitalization associated with influenza reported to the state health authority for week 6.

Table 3

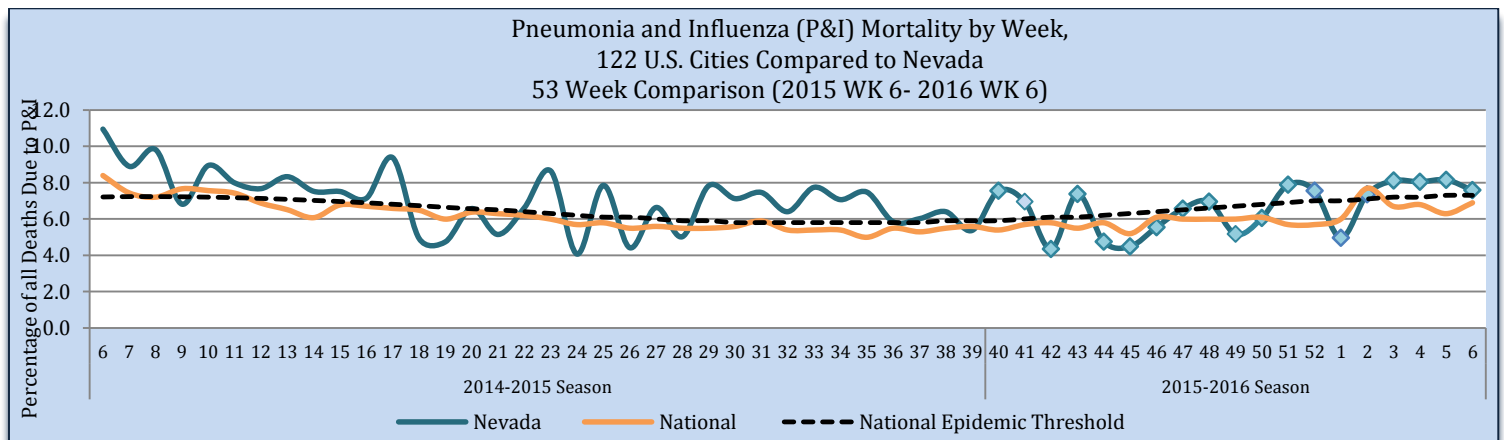
Reporting Jurisdiction	Influenza Hospitalizations			
	Current Week (Week 6)		Cumulative Influenza Season	
	#	%	#	%
Carson City Health and Human Services	0	0.0	8	5.2
Rural Community Health Services	0	0.0	6	3.9
Southern Nevada Health District	24	100	129	84.3
Washoe County Health District	0	0.0	10	6.5
State of Nevada	24	100	153	100

Source: Reported to Office of Public Health Informatics and Epidemiology from each Jurisdiction.

Pneumonia and Influenza (P&I) Mortality Surveillance

The Pneumonia and Influenza (P&I) mortality percentage is the deaths, where Pneumonia or Influenza is listed as the underlying or contributing cause of death, divided by the total deaths in Nevada for each week. As of February 24, there were 33 P&I deaths and 435 total deaths for week 6. The P&I mortality percent is above the threshold at 7.6% (threshold 7.3%). Nationally, the P&I mortality is below the national epidemic threshold at 6.9% for week 6.

Figure 7



Source: OVR: WEVRRS and CDC: FluView.

Technical Notes

- Influenza-like illness (ILI): a fever greater than or equal 100°F with cough and/or sore throat
- Percent positive: The number of positive influenza laboratory tests divided by the total number of tests performed.
- Incidence rate is per 100,000 population as estimated by the state demographer.

This report contains information from national and state-level data sources. Influenza surveillance data is collected by a various systems, including:

- Influenza-like Illness Network (ILINet): a sentinel surveillance system in collaboration with the Centers for the Disease Control and Prevention (CDC) where outpatient providers report ILI information weekly.
- National Electronic Telecommunication System for Surveillance (NETSS): a system whereby data is transmits to CDC. Influenza data collected through NETSS does not provide influenza sub-typing information.
- National Electronic Disease Surveillance System (NEDSS): a system for collecting data and monitoring disease trends and outbreaks.
- NEDSS Based System (NBS): an implementation of the NEDSS standards. It provides a secure, accurate, and efficient means of collecting, transmitting, and analyzing public health data.

Citations

1. CDC. FluView: A Weekly Influenza Surveillance Report. <http://www.cdc.gov/flu/weekly/pastreports.htm>.
2. Nevada State Demographer's Office. 2003-2014 ASRHO Estimates and Projections. Division of Public and Behavioral Health edition. Vintage 2014.
3. OPHIE. DPBH. NBS. 2013-2014. Accessed February 2016.
4. Office of Vital Records (OVR). DPBH. Web Enabled Vital Records Registry System (WEVRRS) [unpublished data]. 2013-2014. Accessed February 2016.
5. Southern Nevada Health District (SNHD). NETSS/Trisano. 2013-2014. Accessed February 2016.

Comments, suggestions, and requests for further information may be addressed to:

NEVADA INFLUENZA SURVEILLANCE PROGRAM
OFFICE OF PUBLIC HEALTH INFORMATICS AND EPIDEMIOLOGY
4126 TECHNOLOGY WAY, STE 200
CARSON CITY NV 89706
TEL: (775) 684-5897
FAX: (775) 684-5999

Compiled and Written by:

JEN THOMPSON

Recommended Citation:

Division of Public and Behavioral Health. Office of Public Health Informatics and Epidemiology. Influenza Weekly Report, 2015 Week 6 (February 8) through 2016 Week 6 (February 13), Nevada. February 2016 i 6 edition 1.0.

This publication was supported by Cooperative Agreement Number TP000534-02 from the Centers for Disease Control and Prevention and/or Assistant Secretary for Preparedness and Response. Its contents are solely the responsibility of the authors and do not necessarily represent the official views of the Centers for Disease Control and Prevention and/or Assistant Secretary for Preparedness and Response.

