

Influenza Weekly Report

2014 Week 16 (April 13 – 19) through 2015 Week 16 (April 19 – 25)

Department of Health and Human Services
Division of Public and Behavioral Health
Office of Public Health Informatics and Epidemiology



Brian Sandoval
Governor
State of Nevada

Richard Whitley, MS
Director
Department of Health and Human Services

Marta E. Jensen
Acting Administrator
Division of Public and Behavioral Health

Tracey D Green, MD
Chief Medical Officer
Division of Public and Behavioral Health

Data for the graphs and tables on the following pages are provisional and may be updated as additional information becomes available.

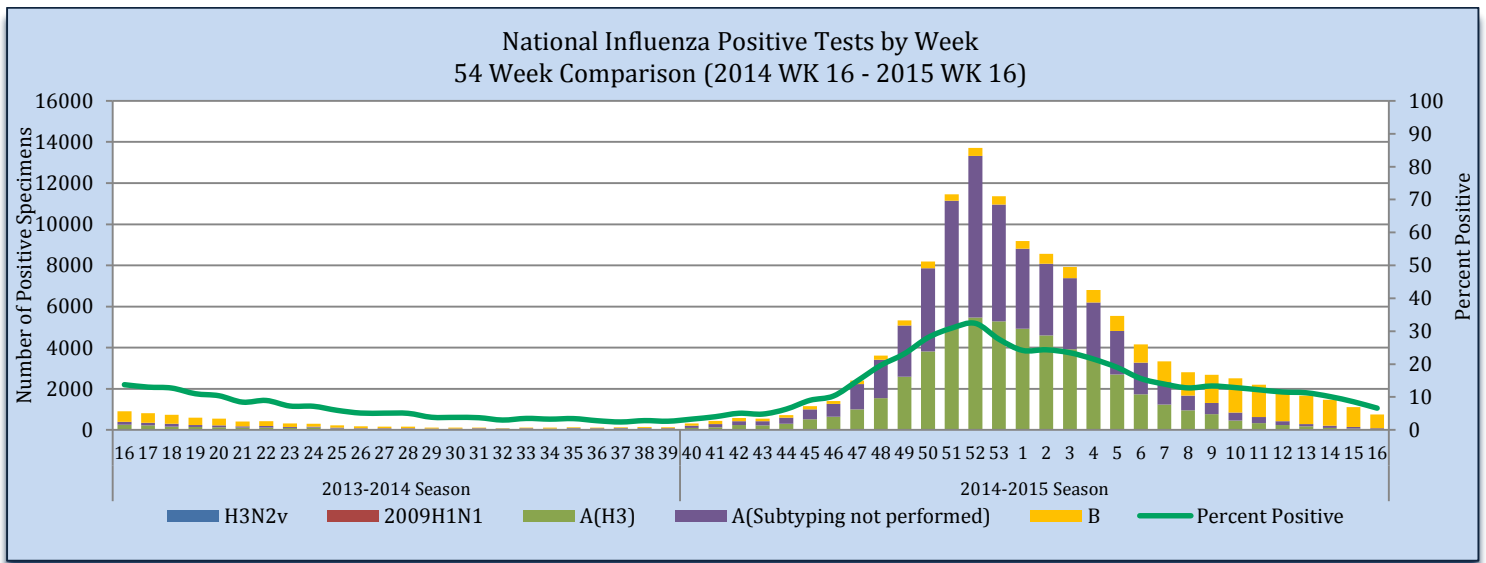
Purpose

The purpose of this report is to provide an overview of and statistics for the influenza season in Nevada for the local public health authorities, sentinel providers and the public.

Influenza-Like Illness Network Surveillance (ILINet)

Respiratory specimens are tested for influenza by the World Health Organization (WHO) and National Respiratory and Enteric Virus Surveillance System (NRVESS) collaborating laboratories by sub-type. During week 16, there were 11,473 specimens collected and tested for influenza, of those 754 were positive (6.6%).

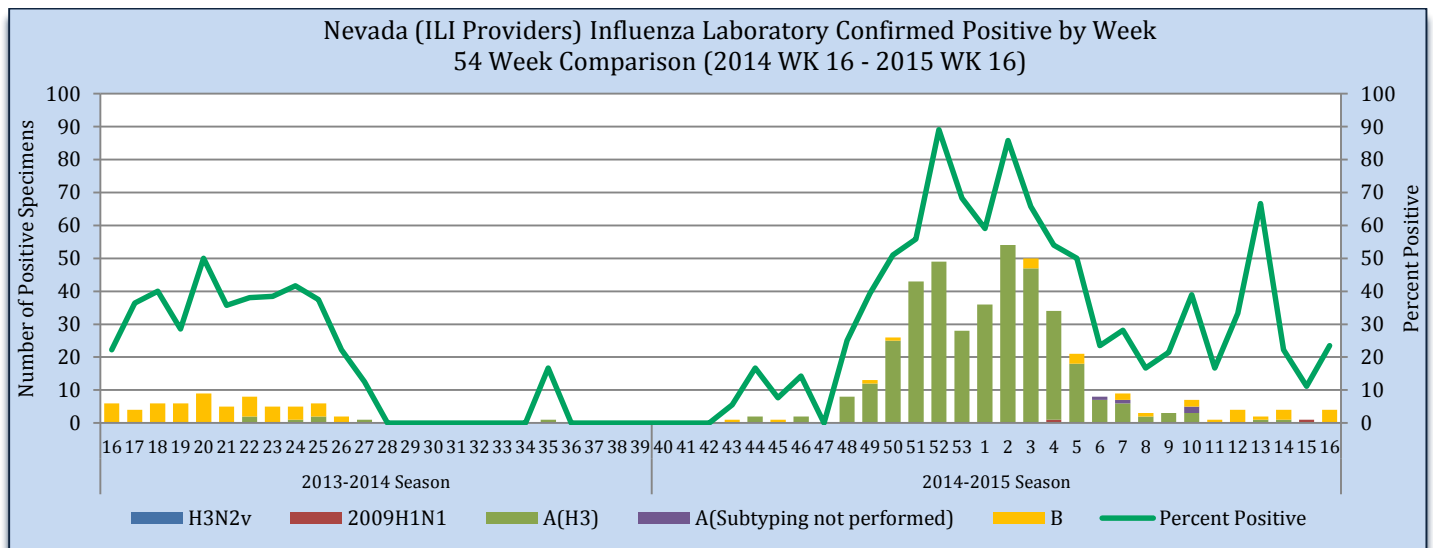
Figure 1



Source of Data: CDC: FluView Weekly Report.

The Nevada total includes laboratory tests for all Nevada residents including out of state laboratories. During week 16, there was 17 specimen collected and tested for influenza, of those 4 were positive (23.5%).

Figure 2



Source of Data: CDC: ILINet.

Nevada State Public Health Laboratory (NSPHL) has tested 404 specimens for influenza from sentinel providers, of which 279 have been positive (69.1%). Southern Nevada Public Health Laboratory (SNPHL) has test 464 specimens this season of which 110 were positive. Nationally, there have been 658,272 specimens sent to the WHO and NERVSS laboratories of which 123,848 were positive or 18.8%. The national numbers in Table 1 are reflected in Figure 1. The state of Nevada data in Table 1 is reflected in Figure 2. The Nevada total includes laboratory test for all Nevada residents including out of state laboratories.

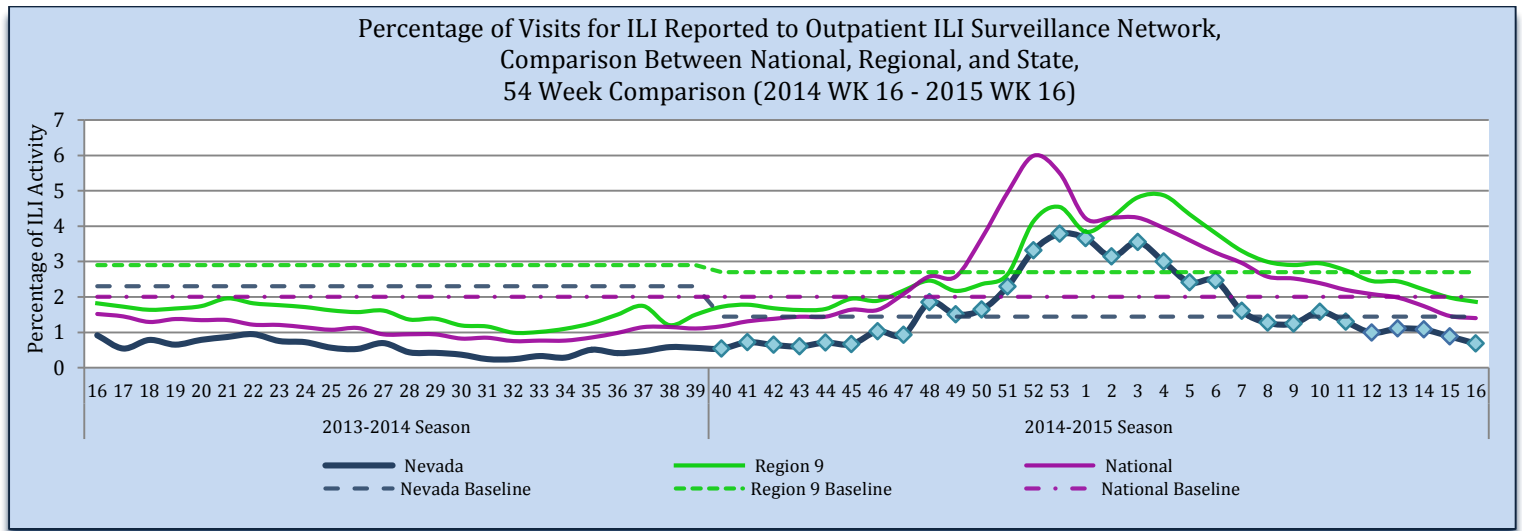
Table 1

ILINet Surveillance: Influenza Specimens Tested State and Nationally										
	NSPHL	SNPHL	State of Nevada (Week 16)		State of Nevada (Season)		National (Week 16)		National (Season)	
			#	%	#	%	#	%	#	%
Specimens Tested	404	464	17		923		11,473		658,272	
Positives to Influenza	279	110	4	23.5	414	44.9	754	6.6	123,848	18.8
Influenza A:	257	103	0	0.0	382	92.3	85	11.3	104,666	84.5
A(2009 H1N1)	2	0	0	0.0	2	0.5	1	1.2	212	0.2
A(H3)	255	103	0	0.0	380	99.5	41	48.2	52,211	49.9
A(Sub-typing not performed)	0	0	0	0.0	0	0.0	43	50.6	52,243	49.9
Influenza B:	18	7	4	100.0	28	6.8	669	88.7	19,181	15.5

Source of Data: CDC: FluView Report and CDC: ILINet.

Influenza-like Illness (ILI) Surveillance Network has each sentinel providers report the number of patients that meet the ILI case definition and number of patients that visit the provider weekly. The “percentage of visits” is the number of ILI patients divided by the total number of patients visit per week. Nevada’s ILI percentage of visits to providers for week 16 is 0.7% and is below the state baseline 1.4%. Region 9 ILI percentage for week 16 is 1.9% and is below the region baseline of 2.7%. Region 9 includes the following states/territory: Arizona, California, Guam, Hawaii, and Nevada. The national ILI percentage for week 16 is 1.4% and is below the national baseline 2.0%.

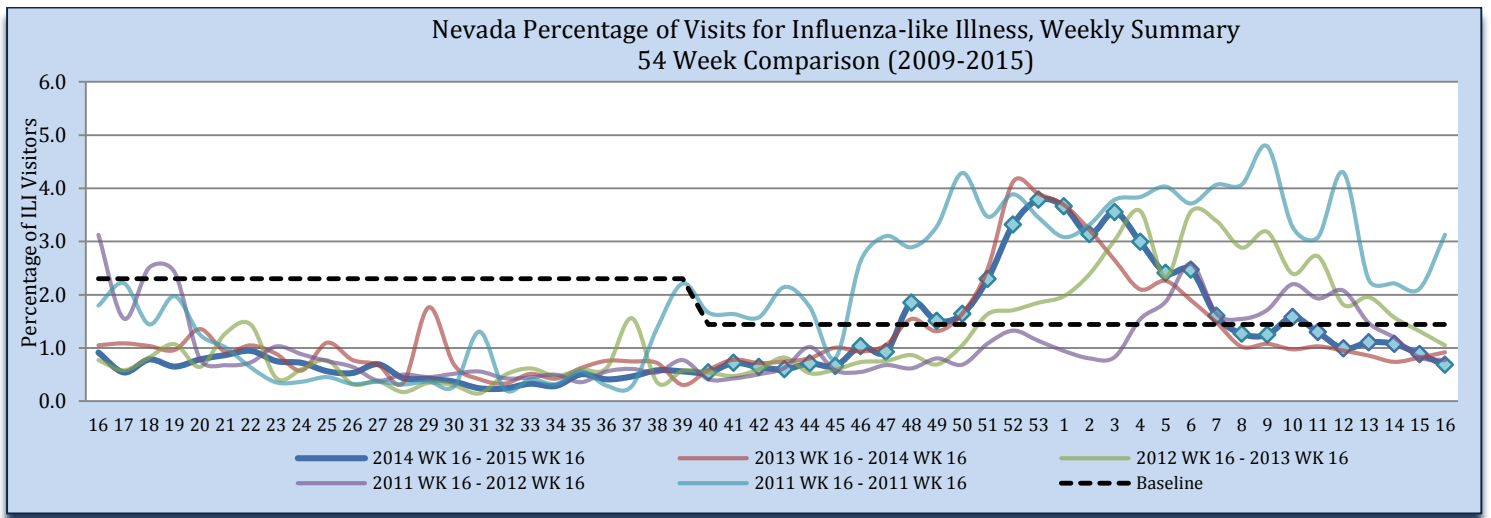
Figure 3



Source of Data: CDC: Flu View Report and CDC: ILINet.

During week 16, 0.7% of visits to sentinel providers were due to ILI; this is less than the 2013-2014 influenza season (0.9%). There were 17,269 patients seen by ILI providers during week 16, of which 118 patients presented with ILI; week 16 of 2014, there were 152 patients seen with ILI. There was no week 53 in the previous influenza season displayed below; therefore the week 53 data point for those seasons is an average of week 52 and 1.

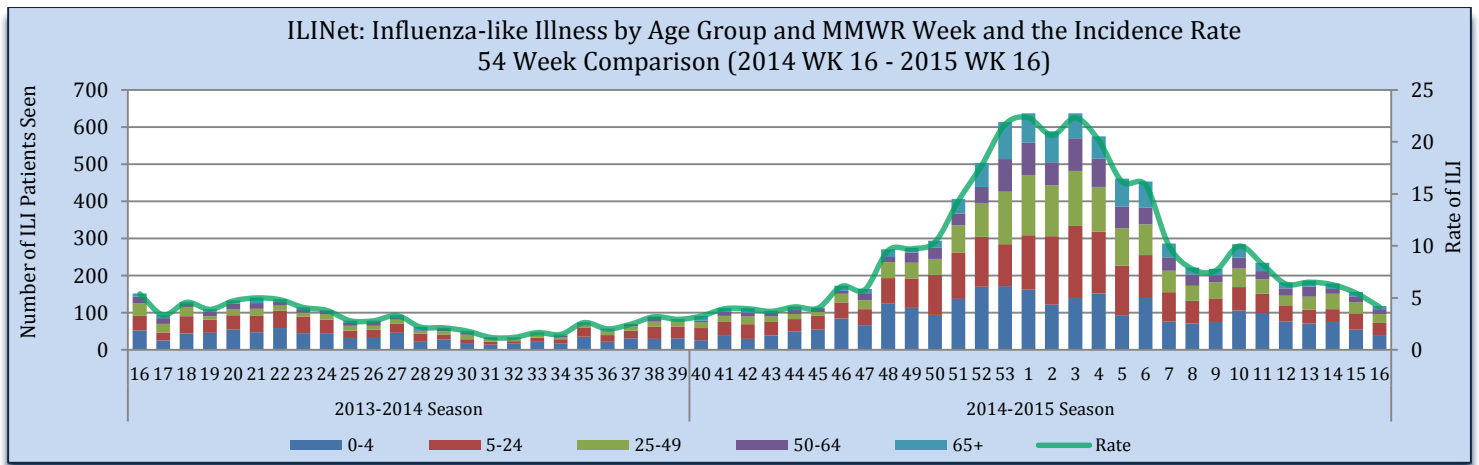
Figure 4



Source of Data: CDC: ILINet.

Influenza-like Illness is reported by age groups, during week 16, patients age 0-4 were the greatest number of patients seen with ILI, at 33 patients seen. The rate for week 16 is 3.2 per 100,000. The rate is calculated by the number of patients presented with ILI, divided by the state population, multiplied by 100,000. The estimated state population for 2015 is 2,855,061.

Figure 5



Source of Data: CDC: ILINet.

Influenza Positive Surveillance (NBS and NETSS)

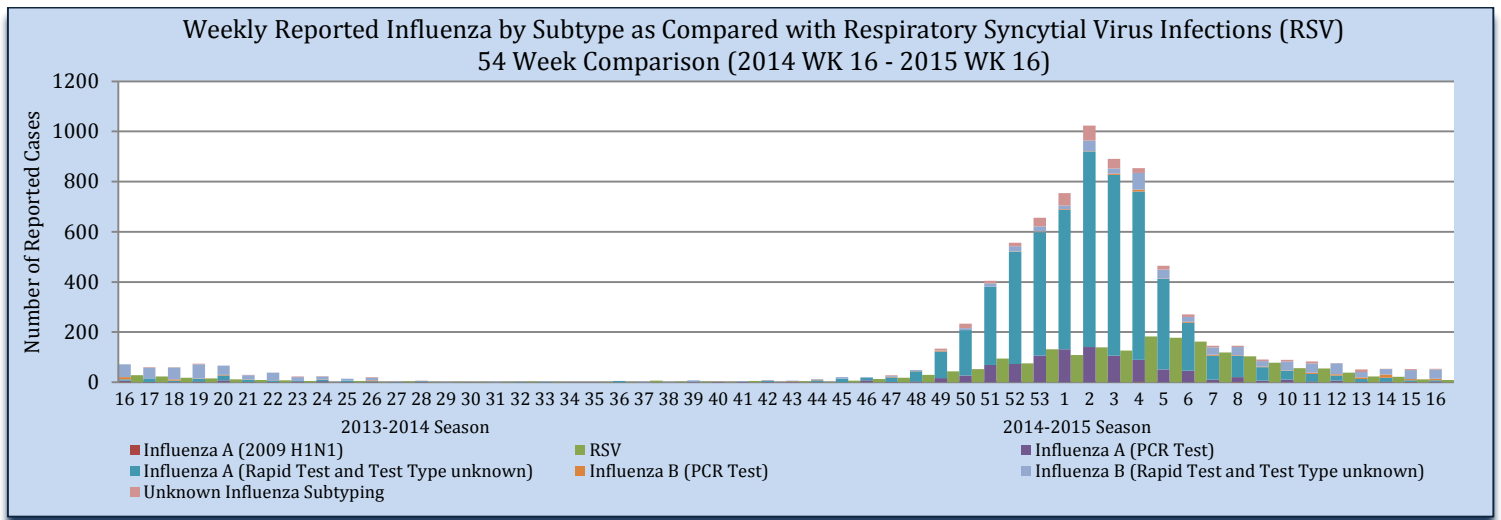
Positive cases of influenza are reported to the state health authority for surveillance purposes. Table 2 and Figure 6 reflect all positive influenza cases reported to the state. Types of influenza testing include commercial rapid diagnostic test (rapid), viral culture, fluorescent antibody, enzyme immunoassay, RT-PCR (PCR), and Immunohistochemistry. The two most common test types in Nevada are Rapid and PCR tests. During week 16, there were 54 influenza cases reported to the state, 8 influenza A cases, 43 influenza B cases and 3 unknown subtyping.

Table 2

Reporting Jurisdiction	Reported Influenza Cases by County Jurisdiction and Influenza Type									
	Current Week (Week 16)					Cumulative Influenza Season				
	H1N1	A	B	Unknown	Total	H1N1	A	B	Unknown	Total
Carson City Health and Human Services	0	0	4	0	4	0	936	114	3	1,053
Rural Community Health Services	0	0	4	0	4	0	563	58	48	669
Southern Nevada Health District	0	8	27	2	37	1	3,220	350	228	3,799
Washoe County Health District	0	0	8	1	9	1	1,493	168	52	1,714
State of Nevada	0	8	43	3	54	2	6,212	690	331	7,235

Source: OPHIE: NBS and SNHD: NETSS.

Figure 6



Source of Data: OPHIE: NBS and SNHD: NETSS.

Hospitalizations

There have been 3 hospitalizations associated with influenza reported to the state health authority during week 16.

Table 3

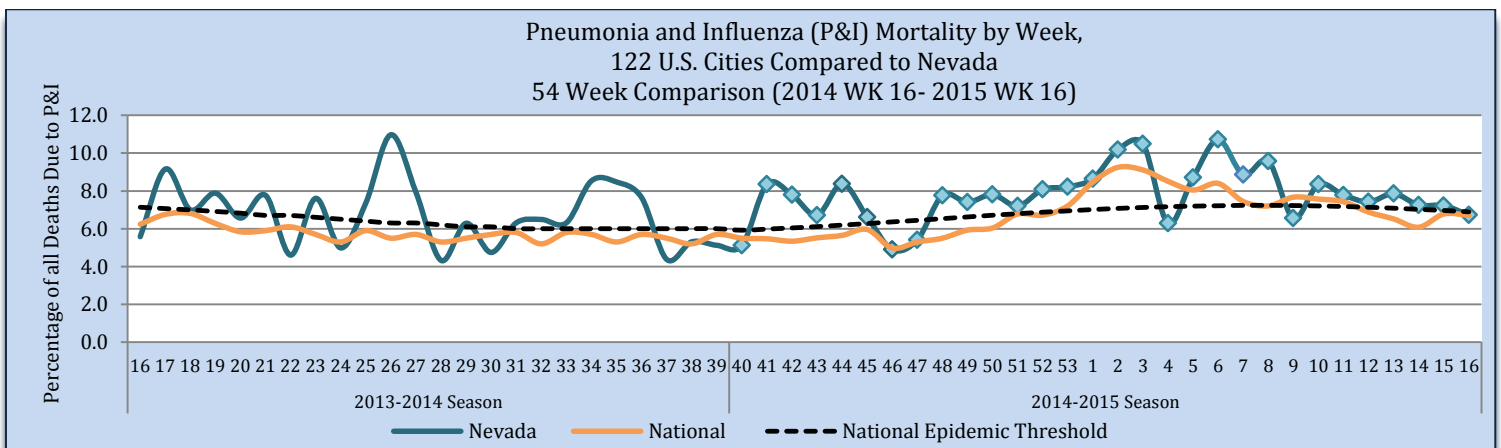
Reporting Jurisdiction	Influenza Hospitalizations			
	Current Week (Week 16)		Cumulative Influenza Season	
	#	%	#	%
Carson City Health and Human Services	0	0.0	44	7.4
Rural Community Health Services	0	0.0	30	5.1
Southern Nevada Health District	3	100	299	50.6
Washoe County Health District	0	0.0	218	36.9
State of Nevada	3	100	590	100

Source: Reported to Office of Public Health Informatics and Epidemiology from each Jurisdiction.

Pneumonia and Influenza (P&I) Mortality Surveillance

The Pneumonia and Influenza (P&I) mortality percentage is the deaths, where Pneumonia or Influenza is listed as the underlying or contributing cause of death, divided by the total deaths in Nevada for each week. As of June 17, there were 30 P&I deaths and 446 total deaths for week 16. The P&I mortality percent is below the threshold at 6.7% (threshold 6.9 %). Nationally, the P&I mortality is below the national epidemic threshold at 6.7% for week 16.

Figure 7



Source: OVR: WEVRRS and CDC: FluView.

Technical Notes

- Influenza-like illness (ILI): a fever greater than or equal 100°F with cough and/or sore throat
- Percent positive: The number of positive influenza laboratory tests divided by the total number of tests performed.
- Incidence rate is per 100,000 population as estimated by the state demographer.

This report contains information from national and state-level data sources. Influenza surveillance data is collected by a various systems, including:

- Influenza-like Illness Network (ILINet): a sentinel surveillance system in collaboration with the Centers for the Disease Control and Prevention (CDC) where outpatient providers report ILI information weekly.
- National Electronic Telecommunication System for Surveillance (NETSS): a system whereby data is transmits to CDC. Influenza data collected through NETSS does not provide influenza sub-typing information.
- National Electronic Disease Surveillance System (NEDSS): a system for collecting data and monitoring disease trends and outbreaks.
- NEDSS Based System (NBS): an implementation of the NEDSS standards. It provides a secure, accurate, and efficient means of collecting, transmitting, and analyzing public health data.

Citations

1. CDC. FluView: A Weekly Influenza Surveillance Report. <http://www.cdc.gov/flu/weekly/pastreports.htm>.
2. Nevada State Demographer's Office. 2003-2014 ASRHO Estimates and Projections. Division of Public and Behavioral Health edition. Vintage 2014.
3. OPHIE. DPBS. BioSense. 2013-2014. Accessed June 2015.
4. OPHIE. DPBH. NBS. 2013-2014. Accessed June 2015.
5. Office of Vital Records (OVR). DPBH. Web Enabled Vital Records Registry System (WEVRRS) [unpublished data]. 2013-2014. Accessed June 2015.
6. Southern Nevada Health District (SNHD). NETSS/Trisano. 2013-2014. Accessed June 2015.

Comments, suggestions, and requests for further information may be addressed to:

NEVADA INFLUENZA SURVEILLANCE PROGRAM
OFFICE OF PUBLIC HEALTH INFORMATICS AND EPIDEMIOLOGY
4126 TECHNOLOGY WAY, STE 200
CARSON CITY NV 89706
TEL: (775) 684-5897
FAX: (775) 684-5999

Compiled and Written by:

JEN THOMPSON

Recommended Citation:

Division of Public and Behavioral Health. Office of Public Health Informatics and Epidemiology. Influenza Weekly Report, 2014 Week 16 (April 13) through 2015 Week 16 (April 25), Nevada. June 2015 i 16 edition 1.0.

This publication was supported by Cooperative Agreement Number TP000534-02 from the Centers for Disease Control and Prevention and/or Assistant Secretary for Preparedness and Response. Its contents are solely the responsibility of the authors and do not necessarily represent the official views of the Centers for Disease Control and Prevention and/or Assistant Secretary for Preparedness and Response.

