

# **ALL OTHER CANCERS**

## ALL OTHER CANCERS

**Table 255. Cancer Incidence, Inpatient Hospital Discharges and Mortality by Type of Cancer, Nevada Residents, 1996-2000**

Type of Cancer	Incidence	Hospital Admissions	Mortality
<b>Total</b>	<b>38,261</b>	<b>32,109</b>	<b>16,806</b>
Rate*	449.2	372.2	207.6
95% C.I.	(444.6-453.9)	(368.1-376.4)	(204.4-210.9)
Skin	875	71	249
Rate*	9.8	0.8	2.9
95% C.I.	(9.2-10.5)	(0.6-1.1)	(2.5-3.3)
Corpus Uteri & Uterus NOS	850	853	131
Rate*	18.8	18.8	3.1
95% C.I.	(17.6-20.1)	(17.6-20.2)	(2.6-3.6)
Ovary	741	635	361
Rate*	16.6	14.1	8.3
95% C.I.	(15.4-17.8)	(13.0-15.2)	(7.5-9.3)
Thyroid Gland	563	750	29
Rate*	6.0	8.0	0.4
95% C.I.	(5.6-6.6)	(7.4-8.6)	(0.2-0.5)
Brain and Other Central Nervous System	560	728	320
Rate*	6.4	8.1	3.7
95% C.I.	(5.9-7.0)	(7.5-8.7)	(3.3-4.2)
Stomach	544	571	326
Rate*	6.8	6.9	4.2
95% C.I.	(6.3-7.5)	(6.3-7.5)	(3.7-4.7)
Liver and Intrahepatic Bile Ducts	501	338	388
Rate*	5.9	3.9	4.7
95% C.I.	(5.4-6.5)	(3.5-4.3)	(4.3-5.3)
Cervix Uteri	497	611	133
Rate*	10.9	13.3	3.0
95% C.I.	(9.9-11.9)	(12.3-14.4)	(2.5-3.6)
Esophagus	444	293	368
Rate*	5.2	3.4	4.3
95% C.I.	(4.7-5.7)	(3.0-3.8)	(3.8-4.7)
Larynx	371	226	136
Rate*	4.3	2.5	1.6
95% C.I.	(3.8-4.7)	(2.2-2.9)	(1.4-1.9)
Multiple Myeloma	337	320	229
Rate*	4.0	3.7	2.8
95% C.I.	(3.6-4.5)	(3.3-4.1)	(2.4-3.2)
Hodgkin's Lymphoma	187	116	39
Rate*	2.0	1.2	0.4
95% C.I.	(1.7-2.3)	(1.0-1.5)	(0.3-0.6)
All Other Sites	3,145	7,626	2,015
Rate*	37.8	88.4	25.5
95% C.I.	(36.4-39.1)	(86.4-90.5)	(24.3-26.7)

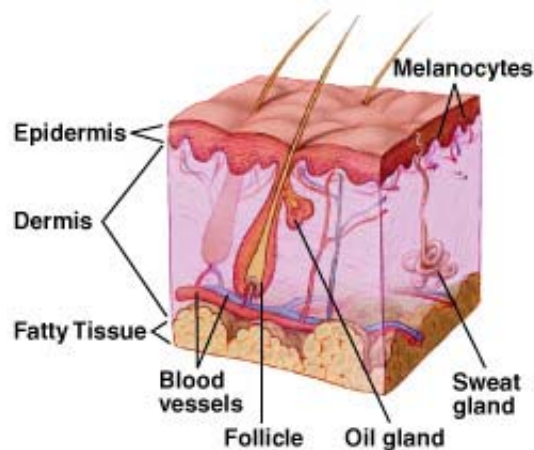
\* Rates are per 100,000 population and age-adjusted to the 2000 US Standard population. Gender-specific cancers are per 100,000 gender-specific population and age-adjusted to the 2000 US Standard population.

Note: The "---" is used for rates calculated on numbers less than ten.

## SKIN CANCER

### GENERAL PROFILE<sup>4</sup>

**Figure 166. Anatomy of the Skin<sup>4</sup>**



**General Anatomy:** The skin is the body's largest organ. It protects against heat, sunlight, injury, and infection. It helps regulate body temperature, stores water and fat, and produces vitamin D. The skin has two main layers: the outer epidermis and the inner dermis. The epidermis is mostly made up of flat, scalelike cells called squamous cells. Round cells called basal cells lie under the squamous cells in the epidermis. The lower part of the epidermis also contains melanocytes. The dermis contains blood vessels, lymph vessels, hair follicles, and glands. Some of these glands produce sweat, which helps regulate body temperature. Other glands produce sebum, an oily substance that helps keep the skin from drying out. Sweat and sebum reach the skin's surface through tiny openings called pores. Melanoma is one of the most common cancers and occurs when melanocytes (pigment cells) become malignant.

**Risk Factors:** Dysplastic nevi moles, many (more than 50) ordinary moles, fair skin, personal history of melanoma or skin cancer, family history of melanoma, weakened immune system, severe, blistering sunburns, and ultraviolet (UV) radiation.

**Signs and Symptoms:** Asymmetrical, border, color, and diameter changes in a mole, and Dysplastic Nevi moles are common signs and symptoms.

**Diagnosing the Cancer:** Excisional biopsy.

**Treatment:** Treatment options include: surgery (Sentinel lymph node biopsy, Lymph node dissection), chemotherapy (Orally or injection or Isolated limb perfusion), biological therapy, or radiation therapy.

**Table 256. Skin Cancer Cases by Age Group and County/Region of Residence at Diagnosis, Nevada Residents (1996-2000) and SEER-11 (1995-1999)**

Category	County/Region of Residence					SEER 11 (1995-1999)
	Nevada Total	Clark	Washoe	All Other Counties	Unknown	
<b>Total</b>						
<b>Cases</b>	875	538	183	154	0	28,292
<b>Rate*</b>	9.4	8.5	11.2	11.2	---	15.3
<b>95% C.I.</b>	(8.8-10.0)	(7.8-9.3)	(9.6-12.8)	(9.5-13.0)	---	(15.1-15.5)
<b>Age Group</b>						
<1	0	0	0	0	0	---
Rate*	---	---	---	---	---	---
95% C.I.	---	---	---	---	---	---
1-4	0	0	0	0	0	6
Rate*	---	---	---	---	---	---
95% C.I.	---	---	---	---	---	---
5-14	1	0	0	1	0	51
Rate*	---	---	---	---	---	0.2
95% C.I.	---	---	---	---	---	(0.1-0.2)
15-24	22	13	4	5	0	631
Rate*	1.7	1.5	---	---	---	2.4
95% C.I.	(1.0-2.4)	(0.7-2.3)	---	---	---	(2.3-2.6)
25-34	70	51	12	7	0	2,327
Rate*	4.9	5.0	4.8	---	---	8.0
95% C.I.	(3.7-6.0)	(3.6-6.4)	(2.1-7.4)	---	---	(7.6-8.3)
35-44	122	57	39	26	0	4,568
Rate*	8.2	5.8	14.0	11.5	---	14.6
95% C.I.	(6.7-9.6)	(4.3-7.2)	(9.6-18.5)	(7.1-15.9)	---	(14.2-15.0)
45-54	161	87	41	33	0	5,493
Rate*	13.3	11.0	18.3	17.2	---	24.0
95% C.I.	(11.3-15.4)	(8.7-13.3)	(12.7-23.8)	(11.3-23.0)	---	(23.4-24.6)
55-64	176	117	35	24	0	4,750
Rate*	20.4	20.1	24.7	17.4	---	33.9
95% C.I.	(17.4-23.5)	(16.5-23.8)	(16.5-32.9)	(10.4-24.4)	---	(33.0-34.9)
65-74	187	122	30	35	0	5,292
Rate*	30.2	29.4	29.7	33.5	---	45.9
95% C.I.	(25.8-34.5)	(24.2-34.7)	(19.1-40.4)	(22.4-44.6)	---	(44.6-47.1)
75-84	119	80	21	18	0	3,878
Rate*	36.3	37.0	38.2	31.9	---	53.4
95% C.I.	(29.8-42.8)	(28.9-45.1)	(21.8-54.5)	(17.1-46.6)	---	(51.7-55.0)
85+	16	10	1	5	0	1,292
Rate*	22.7	23.3	---	---	---	52.1
95% C.I.	(11.6-33.8)	(8.9-37.8)	---	---	---	(49.3-54.9)
Unknown	1	1	0	0	0	0

\* Rates are per 100,000 age-specific population.

Note: The “---” is used for rates calculated on numbers less than ten and SEER numbers less than five. See Technical Notes for more information.

**Table 257. Skin Cancer Inpatient Discharges by Gender, Charges, Length of Stay, and County/Region of Residence, Nevada Residents, 1996-2000**

Category	County/Region of Residence				
	Nevada Total	Clark	Washoe	All Other Counties	Unknown
<b>Total</b>					
Discharges	71	52	8	11	0
Rate*	0.8	0.9	---	0.7	---
95% C.I.	(0.6-1.1)	(0.7-1.3)	---	(0.4-1.4)	---
<b>Gender</b>					
Male	42	26	6	10	0
Rate*	1.1	1.1	---	1.3	---
95% C.I.	(0.7-1.6)	(0.7-1.8)	---	(0.6-2.8)	---
Female	29	26	2	1	0
Rate*	0.6	0.9	---	---	---
95% C.I.	(0.4-0.9)	(0.6-1.3)	---	---	---
Other/Unknown	0	0	0	0	0
<b>Inpatient Discharge Charges (\$)</b>					
Total Charges	\$968,720	\$747,948	\$82,084	\$138,688	---
Average Charges	\$13,644	\$14,384	\$10,261	\$12,608	---
Median Charges	\$11,084	\$11,139	\$9,973	\$11,084	---
<b>Discharge Length of Stay (LOS) (Days)</b>					
Total LOS	238	190	29	19	---
Average LOS	3.4	3.7	3.6	1.7	---
Median LOS	2.0	3.0	3.5	1.0	---

\* Rates are per 100,000 population and are age-adjusted to the 2000 US Standard population.

Note: The "----" is used for rates calculated on numbers less than ten. Caution should be used when comparing inpatient hospital discharge data to other data sources, since it is occurrence-based data. Please see Technical Notes for more information.

**Table 258. Skin Cancer Mortality by Age Group and County/Region of Residence, Nevada Residents, 1996-2000**

Category	County/Region of Residence			
	Nevada Total	Clark	Washoe	All Other Counties
<b>Total</b>				
<b>Mortality</b>	249	166	35	48
<b>Rate*</b>	2.7	2.6	2.1	3.5
<b>95% C.I.</b>	(2.3-3.0)	(2.2-3.0)	(1.4-2.8)	(2.5-4.5)
<b>Age Group</b>				
<1	0	0	0	0
Rate*	---	---	---	---
95% C.I.	---	---	---	---
1-4	0	0	0	0
Rate*	---	---	---	---
95% C.I.	---	---	---	---
5-14	0	0	0	0
Rate*	---	---	---	---
95% C.I.	---	---	---	---
15-24	1	1	0	0
Rate*	---	---	---	---
95% C.I.	---	---	---	---
25-34	5	4	1	0
Rate*	---	---	---	---
95% C.I.	---	---	---	---
35-44	28	17	7	4
Rate*	1.9	1.7	---	---
95% C.I.	(1.2-2.6)	(0.9-2.5)	---	---
45-54	41	26	7	8
Rate*	3.4	3.3	---	---
95% C.I.	(2.4-4.4)	(2.0-4.5)	---	---
55-64	53	36	5	12
Rate*	6.2	6.2	---	8.7
95% C.I.	(4.5-7.8)	(4.2-8.2)	---	(3.8-13.6)
65-74	72	49	9	14
Rate*	11.6	11.8	---	13.4
95% C.I.	(8.9-14.3)	(8.5-15.1)	---	(6.4-20.4)
75-84	41	29	6	6
Rate*	12.5	13.4	---	---
95% C.I.	(8.7-16.3)	(8.5-18.3)	---	---
85+	8	4	0	4
Rate*	---	---	---	---
95% C.I.	---	---	---	---
Unknown	0	0	0	0

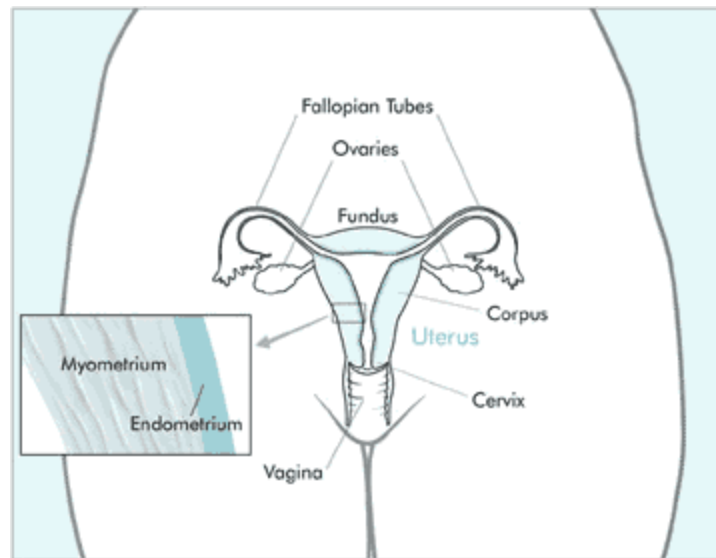
\* Rates are per 100,000 age-specific population.

Note: The "—" is used for rates calculated on numbers less than ten.

## UTERINE CANCER

### GENERAL PROFILE<sup>4</sup>

**Figure 167. Anatomical Drawing of Female Reproductive System<sup>4</sup>**



**General Anatomy:** The uterus is part of a woman's reproductive system. It is the hollow, pear-shaped organ where a baby grows. The uterus is in the pelvis between the bladder and the rectum. The narrow, lower portion of the uterus is the cervix. The broad, middle part of the uterus is the body, or corpus. The dome-shaped top of the uterus is the fundus. The fallopian tubes extend from either side of the top of the uterus to the ovaries.

The wall of the uterus has two layers of tissue. The inner layer, or lining, is the endometrium. The outer layer is muscle tissue called the myometrium. In women of childbearing age, the lining of the uterus grows and thickens each month to prepare for pregnancy. If a woman does not become pregnant, the thick, bloody lining flows out of the body through the vagina. This flow is called menstruation.

**Risk Factors:** Age (Women over 50), Endometrial hyperplasia, Hormone replacement therapy (HRT), Obesity and related conditions, Women taking the drug Tamoxifen, Race (White Females), and Inherited form of Colorectal Cancer.

**Signs and Symptoms:** Unusual vaginal bleeding or discharge, difficult or painful urination, pain during intercourse, and pain in the pelvic area.

**Diagnosing the Cancer:** Pelvic exam, Pap test, transvaginal ultrasound, and biopsy.

**Treatment:** Treatment options include: surgery (Hysterectomy), radiation therapy and hormonal therapy.

**Table 259. Uterine Cancer Cases by Age Group and County/Region of Residence at Diagnosis, Nevada Residents (1996-2000) and SEER-11 (1995-1999)**

Category	County/Region of Residence					
	Nevada Total	Clark	Washoe	All Other Counties	Unknown	SEER 11 (1995-1999)
<b>Total</b>						
<b>Cases</b>	850	592	139	119	0	22,634
<b>Rate*</b>	18.6	19.1	17.2	17.7	---	24.1
<b>95% C.I.</b>	(17.3-19.8)	(17.6-20.7)	(14.4-20.1)	(14.5-20.9)	---	(23.8-24.4)
<b>Age Group</b>						
<1	0	0	0	0	0	---
Rate*	---	---	---	---	---	---
95% C.I.	---	---	---	---	---	---
1-4	0	0	0	0	0	---
Rate*	---	---	---	---	---	---
95% C.I.	---	---	---	---	---	---
5-14	0	0	0	0	0	---
Rate*	---	---	---	---	---	---
95% C.I.	---	---	---	---	---	---
15-24	1	1	0	0	0	16
Rate*	---	---	---	---	---	0.1
95% C.I.	---	---	---	---	---	(0.1-0.2)
25-34	20	17	2	1	0	302
Rate*	2.9	3.5	---	---	---	2.1
95% C.I.	(1.6-4.2)	(1.8-5.1)	---	---	---	(1.8-2.3)
35-44	47	35	5	7	0	1,374
Rate*	6.5	7.4	---	---	---	8.8
95% C.I.	(4.6-8.4)	(4.9-9.8)	---	---	---	(8.3-9.2)
45-54	153	105	29	19	0	3,924
Rate*	25.6	26.7	26.4	20.2	---	33.8
95% C.I.	(21.6-29.7)	(21.6-31.8)	(16.8-36.1)	(11.1-29.3)	---	(32.7-34.8)
55-64	208	152	34	22	0	5,573
Rate*	48.1	51.5	48.8	32.7	---	76.5
95% C.I.	(41.6-54.7)	(43.3-59.7)	(32.4-65.2)	(19.0-46.3)	---	(74.5-78.5)
65-74	252	174	38	40	0	5,979
Rate*	80.2	82.9	73.0	76.5	---	93.7
95% C.I.	(70.3-90.1)	(70.6-95.2)	(49.8-96.3)	(52.8-100.2)	---	(91.3-96.0)
75-84	146	95	26	25	0	4,276
Rate*	81.0	80.3	82.6	81.9	---	97.8
95% C.I.	(67.8-94.1)	(64.2-96.5)	(50.9-114.4)	(49.8-113.9)	---	(94.9-100.8)
85+	23	13	5	5	0	1,188
Rate*	48.1	44.3	---	---	---	68.3
95% C.I.	(28.5-67.8)	(20.2-68.4)	---	---	---	(64.4-72.2)
Unknown	0	0	0	0	0	0

\* Rates are per 100,000 age-specific female population.

Note: The "----" is used for rates calculated on numbers less than ten and SEER numbers less than five. See Technical Notes for more information.



**Table 260. Uterine Cancer Inpatient Discharges by Gender, Charges, Length of Stay, and County/Region of Residence, Nevada Residents, 1996-2000**

Category	County/Region of Residence				
	Nevada Total	Clark	Washoe	All Other Counties	Unknown
<b>Total</b>					
Discharges	853	613	127	113	0
Rate*	9.7	10.5	8.4	8.0	---
95% C.I.	(9.1-10.4)	(9.7-11.4)	(7.0-10.1)	(6.6-9.7)	---
<b>Gender</b>					
Male	0	0	0	0	0
Rate*	---	---	---	---	---
95% C.I.	---	---	---	---	---
Female	853	613	127	113	0
Rate*	18.8	20.3	16.3	15.6	---
95% C.I.	(17.6-20.2)	(18.7-22.0)	(13.6-19.4)	(12.9-18.8)	---
Other/Unknown	0	0	0	0	0
<b>Inpatient Discharge Charges (\$)</b>					
Total Charges	\$17,544,696	\$12,570,807	\$2,803,900	\$2,169,989	---
Average Charges	\$20,568	\$20,507	\$22,078	\$19,203	---
Median Charges	\$15,534	\$15,534	\$18,436	\$13,783	---
<b>Discharge Length of Stay (LOS) (Days)</b>					
Total LOS	3,738	2,735	545	458	---
Average LOS	4.4	4.5	4.3	4.1	---
Median LOS	3.0	3.0	3.0	3.0	---

\* Rates are per 100,000 population and are age-adjusted to the 2000 US Standard population.

Note: The "---" is used for rates calculated on numbers less than ten. Caution should be used when comparing inpatient hospital discharge data to other data sources, since it is occurrence-based data. Please see Technical Notes for more information.

**Table 261. Uterine Cancer Mortality by Age Group and County/Region of Residence, Nevada Residents, 1996-2000**

Category	County/Region of Residence			
	Nevada Total	Clark	Washoe	All Other Counties
<b>Total</b>				
<b>Cases</b>	131	85	28	18
<b>Rate*</b>	2.9	2.7	3.5	2.7
<b>95% C.I.</b>	(2.4-3.4)	(2.2-3.3)	(2.2-4.8)	(1.4-3.9)
<b>Age Group</b>				
<1	0	0	0	0
Rate*	---	---	---	---
95% C.I.	---	---	---	---
1-4	0	0	0	0
Rate*	---	---	---	---
95% C.I.	---	---	---	---
5-14	0	0	0	0
Rate*	---	---	---	---
95% C.I.	---	---	---	---
15-24	0	0	0	0
Rate*	---	---	---	---
95% C.I.	---	---	---	---
25-34	1	1	0	0
Rate*	---	---	---	---
95% C.I.	---	---	---	---
35-44	6	6	0	0
Rate*	---	---	---	---
95% C.I.	---	---	---	---
45-54	15	11	4	0
Rate*	2.5	2.8	---	---
95% C.I.	(1.2-3.8)	(1.1-4.5)	---	---
55-64	22	17	4	1
Rate*	5.1	5.8	---	---
95% C.I.	(3.0-7.2)	(3.0-8.5)	---	---
65-74	37	19	9	9
Rate*	11.8	9.1	---	---
95% C.I.	(8.0-15.6)	(5.0-13.1)	---	---
75-84	37	24	7	6
Rate*	20.5	20.3	---	---
95% C.I.	(13.9-27.1)	(12.2-28.4)	---	---
85+	13	7	4	2
Rate*	27.2	---	---	---
95% C.I.	(12.4-42.0)	---	---	---
Unknown	0	0	0	0

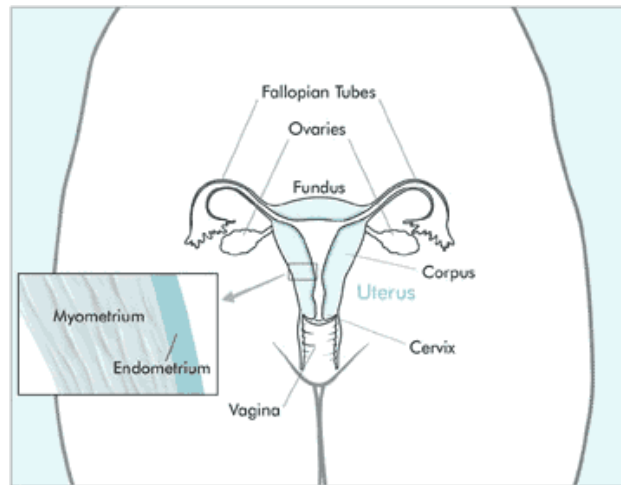
\* Rates are per 100,000 age-specific female population.

Note: The "----" is used for rates calculated on numbers less than ten.

## OVARIAN CANCER

### GENERAL PROFILE<sup>4</sup>

**Figure 168. Anatomical Drawing of Female Reproductive System<sup>4</sup>**



**General Anatomy:** The ovaries are a pair of organs in the female reproductive system. They are located in the pelvis, one on each side of the uterus. Each ovary is about the size and shape of an almond. The ovaries have two functions: they produce eggs and female hormones (chemicals that control the way certain cells or organs function).

Every month, during the menstrual cycle, an egg is released from one ovary in a process called ovulation. The egg travels from the ovary through the fallopian tube to the uterus. The ovaries are also the main source of the female hormones estrogen and progesterone, which influence the development of a woman's breasts, body shape, and body hair. They also regulate the menstrual cycle and pregnancy.

**Risk Factors:** Family History, Age (Women over 50, especially over 60), Women who never had children, Personal history of Breast or Colorectal Cancer, Use of Fertility drugs, Use of Talc, and Hormone replacement therapy (HRT).

**Signs and Symptoms:** General abdominal discomfort and/or pain (gas, indigestion, pressure, swelling, bloating, cramps), Nausea, diarrhea, constipation, or frequent urination, Loss of appetite, Feeling of fullness even after a light meal, Weight gain or loss with no known reason, and Abnormal bleeding from the vagina.

**Diagnosing the Cancer:** Pelvic exam, ultrasound, CA-125 assay blood test, lower gastrointestinal (GI) series, or barium enema (Colon and Rectum X-rays), CT (or CAT) scan, and biopsy.

**Treatment:** Surgery (hysterectomy with bilateral Salpingo-oophorectomy), chemotherapy, radiation therapy, and clinical trials.

**Table 262. Ovarian Cancer Cases by Age Group and County/Region of Residence at Diagnosis, Nevada Residents (1996-2000) and SEER-11 (1995-1999)**

Category	County/Region of Residence					SEER 11 (1995-1999)
	Nevada Total	Clark	Washoe	All Other Counties	Unknown	
<b>Total</b>						
<b>Cases</b>	741	507	140	94	0	15,611
<b>Rate*</b>	16.2	16.4	17.3	14.0	---	16.6
<b>95% C.I.</b>	(15.0-17.4)	(15.0-17.8)	(14.5-20.2)	(11.1-16.8)	---	(16.3-16.9)
<b>Age Group</b>						
<1	0	0	0	0	0	---
Rate*	---	---	---	---	---	---
95% C.I.	---	---	---	---	---	---
1-4	1	0	0	1	0	5
Rate*	---	---	---	---	---	---
95% C.I.	---	---	---	---	---	---
5-14	1	1	0	0	0	67
Rate*	---	---	---	---	---	0.5
95% C.I.	---	---	---	---	---	(0.4-0.6)
15-24	6	4	0	2	0	328
Rate*	---	---	---	---	---	2.6
95% C.I.	---	---	---	---	---	(2.3-2.9)
25-34	34	24	6	4	0	836
Rate*	4.9	4.9	---	---	---	5.7
95% C.I.	(3.3-6.6)	(3.0-6.9)	---	---	---	(5.4-6.1)
35-44	74	49	16	9	0	1,701
Rate*	10.2	10.3	11.8	---	---	10.8
95% C.I.	(7.9-12.6)	(7.4-13.2)	(6.0-17.5)	---	---	(10.3-11.4)
45-54	123	83	28	12	0	2,962
Rate*	20.6	21.1	25.5	12.8	---	25.5
95% C.I.	(17.0-24.3)	(16.6-25.7)	(16.1-35.0)	(5.5-20.0)	---	(24.6-26.4)
55-64	157	109	24	24	0	2,858
Rate*	36.3	36.9	34.5	35.6	---	39.2
95% C.I.	(30.7-42.0)	(30.0-43.9)	(20.7-48.2)	(21.4-49.9)	---	(37.8-40.7)
65-74	196	135	34	27	0	3,334
Rate*	62.4	64.3	65.4	51.7	---	52.2
95% C.I.	(53.7-71.1)	(53.5-75.2)	(43.4-87.3)	(32.2-71.1)	---	(50.5-54.0)
75-84	113	77	27	9	0	2,603
Rate*	62.7	65.1	85.8	---	---	59.6
95% C.I.	(51.1-74.2)	(50.6-79.6)	(53.5-118.2)	---	---	(57.3-61.8)
85+	36	25	5	6	0	916
Rate*	75.4	85.2	---	---	---	52.7
95% C.I.	(50.7-100.0)	(51.8-118.7)	---	---	---	(49.3-56.1)
Unknown	0	0	0	0	0	0

\* Rates are per 100,000 age-specific female population.

Note: The "----" is used for rates calculated on numbers less than ten and SEER numbers less than five. See Technical Notes for more information.

**Table 263. Ovarian Cancer Inpatient Discharges by Gender, Charges, Length of Stay, and County/Region of Residence, Nevada Residents, 1996-2000**

Category	County/Region of Residence				
	Nevada Total	Clark	Washoe	All Other Counties	Unknown
<b>Total</b>					
Discharges	635	438	128	69	0
Rate*	7.2	7.5	8.5	4.8	---
95% C.I.	(6.7-7.8)	(6.8-8.3)	(7.1-10.2)	(3.7-6.2)	---
<b>Gender</b>					
Male	0	0	0	0	0
Rate*	---	---	---	---	---
95% C.I.	---	---	---	---	---
Female	635	438	128	69	0
Rate*	14.1	14.6	16.4	9.6	---
95% C.I.	(13.0-15.2)	(13.2-16.0)	(13.7-19.6)	(7.4-12.2)	---
Other/Unknown	0	0	0	0	0
<b>Inpatient Discharge Charges (\$)</b>					
Total Charges	\$23,133,925	\$15,619,677	\$5,436,491	\$2,077,757	---
Average Charges	\$36,431	\$35,661	\$42,473	\$30,112	---
Median Charges	\$25,411	\$25,239	\$25,861	\$24,107	---
<b>Discharge Length of Stay (LOS) (Days)</b>					
Total LOS	4,956	3,459	1,086	411	---
Average LOS	7.8	7.9	8.5	6.0	---
Median LOS	6.0	6.0	6.0	5.0	---

\* Rates are per 100,000 population and are age-adjusted to the 2000 US Standard population.

Note: The "---" is used for rates calculated on numbers less than ten. Caution should be used when comparing inpatient hospital discharge data to other data sources, since it is occurrence-based data. Please see Technical Notes for more information.

**Table 264. Ovarian Cancer Mortality by Age Group and County/Region of Residence, Nevada Residents, 1996-2000**

Category	County/Region of Residence			
	Nevada Total	Clark	Washoe	All Other Counties
<b>Total</b>				
<b>Cases</b>	361	259	66	36
<b>Rate*</b>	7.9	8.4	8.2	5.3
<b>95% C.I.</b>	(7.1-8.7)	(7.4-9.4)	(6.2-10.2)	(3.6-7.1)
<b>Age Group</b>				
<1	0	0	0	0
Rate*	---	---	---	---
95% C.I.	---	---	---	---
1-4	0	0	0	0
Rate*	---	---	---	---
95% C.I.	---	---	---	---
5-14	0	0	0	0
Rate*	---	---	---	---
95% C.I.	---	---	---	---
15-24	0	0	0	0
Rate*	---	---	---	---
95% C.I.	---	---	---	---
25-34	2	2	0	0
Rate*	---	---	---	---
95% C.I.	---	---	---	---
35-44	11	8	2	1
Rate*	1.5	---	---	---
95% C.I.	(0.6-2.4)	---	---	---
45-54	54	42	9	3
Rate*	9.0	10.7	---	---
95% C.I.	(6.6-11.5)	(7.5-13.9)	---	---
55-64	65	42	14	9
Rate*	15.0	14.2	20.1	---
95% C.I.	(11.4-18.7)	(9.9-18.5)	(9.6-30.6)	---
65-74	115	83	22	10
Rate*	36.6	39.5	42.3	19.1
95% C.I.	(29.9-43.3)	(31.0-48.1)	(24.6-60.0)	(7.3-31.0)
75-84	80	59	14	7
Rate*	44.4	49.9	44.5	---
95% C.I.	(34.7-54.1)	(37.2-62.6)	(21.2-67.8)	---
85+	34	23	5	6
Rate*	71.2	78.4	---	---
95% C.I.	(47.2-95.1)	(46.4-110.5)	---	---
Unknown	0	0	0	0

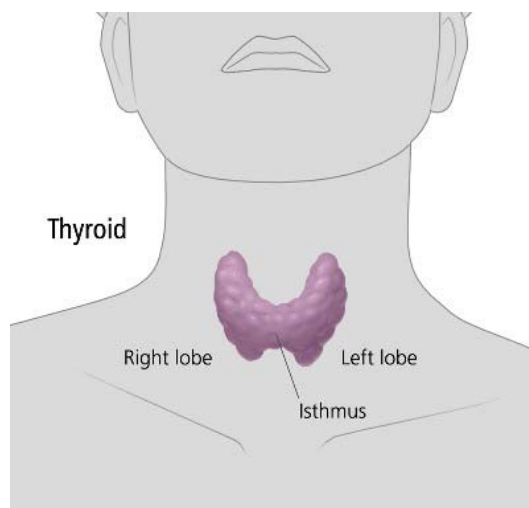
\* Rates are per 100,000 age-specific female population.

Note: The "----" is used for rates calculated on numbers less than ten.

## THYROID GLAND CANCER

### GENERAL PROFILE<sup>4</sup>

Figure 169. Anatomical Drawing of the Thyroid Gland<sup>4</sup>



**General Anatomy:** The thyroid is a gland in the neck. It has two kinds of cells that make hormones. Follicular cells make thyroid hormone, which affects heart rate, body temperature, and energy level. C cells make calcitonin, a hormone that helps control the level of calcium in the blood. The thyroid is shaped like a butterfly and lies at the front of the neck, beneath the voice box (larynx). It has two parts, or lobes. The two lobes are separated by a thin section called the isthmus. A healthy thyroid is a little larger than a quarter. It usually cannot be felt through the skin. A swollen lobe might look or feel like a lump in the front of the neck. A swollen thyroid is called a goiter. Most goiters are caused by not enough iodine in the diet.

**Risk Factors:** Exposure to radiation, Family history, Being female, Age (over 40), Race (Whites are more likely to be diagnosed with Thyroid Cancer than Blacks, as a racial/ethnic group,), and not enough iodine in the diet.

**Signs and Symptoms:** A lump, or nodule, in the front of the neck near the Adam's apple, hoarseness or difficulty speaking in a normal voice, swollen lymph nodes, especially in the neck, difficulty swallowing or breathing, or pain in the throat or neck.

**Diagnosing the Cancer:** Physical exam, blood tests, ultrasonography, radionuclide scanning, and fine-needle aspiration.

**Treatment:** surgery (Total thyroidectomy, Lobectomy), radioactive iodine, hormone treatment, external radiation, and chemotherapy.

**Table 265. Thyroid Gland Cancer Cases by Age Group and County/Region of Residence at Diagnosis, Nevada Residents (1996-2000) and SEER-11 (1995-1999)**

Category	County/Region of Residence					SEER 11 (1995-1999)
	Nevada Total	Clark	Washoe	All Other Counties	Unknown	
<b>Total</b>						
<b>Cases</b>	563	373	113	77	0	11,885
<b>Rate*</b>	6.1	5.9	6.9	5.6	---	6.4
<b>95% C.I.</b>	(5.6-6.6)	(5.3-6.5)	(5.6-8.2)	(4.4-6.9)	---	(6.3-6.5)
<b>Age Group</b>						
<1	0	0	0	0	0	---
Rate*	---	---	---	---	---	---
95% C.I.	---	---	---	---	---	---
1-4	0	0	0	0	0	---
Rate*	---	---	---	---	---	---
95% C.I.	---	---	---	---	---	---
5-14	2	2	0	0	0	68
Rate*	---	---	---	---	---	0.3
95% C.I.	---	---	---	---	---	(0.2-0.3)
15-24	31	20	8	3	0	742
Rate*	2.4	2.3	---	---	---	2.9
95% C.I.	(1.6-3.3)	(1.3-3.3)	---	---	---	(2.7-3.1)
25-34	116	82	23	11	0	2,089
Rate*	8.1	8.0	9.1	6.9	---	7.1
95% C.I.	(6.6-9.6)	(6.3-9.8)	(5.4-12.8)	(2.8-11.0)	---	(6.8-7.4)
35-44	134	80	32	22	0	2,793
Rate*	9.0	8.1	11.5	9.7	---	8.9
95% C.I.	(7.5-10.5)	(6.3-9.8)	(7.5-15.5)	(5.7-13.8)	---	(8.6-9.3)
45-54	133	82	31	20	0	2,495
Rate*	11.0	10.4	13.8	10.4	---	10.9
95% C.I.	(9.1-12.9)	(8.1-12.6)	(8.9-18.7)	(5.8-15.0)	---	(10.5-11.3)
55-64	76	52	12	12	0	1,578
Rate*	8.8	8.9	8.5	8.7	---	11.3
95% C.I.	(6.8-10.8)	(6.5-11.4)	(3.7-13.3)	(3.8-13.6)	---	(10.7-11.8)
65-74	41	32	5	4	0	1,212
Rate*	6.6	7.7	---	---	---	10.5
95% C.I.	(4.6-8.6)	(5.0-10.4)	---	---	---	(9.9-11.1)
75-84	26	21	1	4	0	723
Rate*	7.9	9.7	---	---	---	9.9
95% C.I.	(4.9-11.0)	(5.6-13.9)	---	---	---	(9.2-10.7)
85+	4	2	1	1	0	184
Rate*	---	---	---	---	---	7.4
95% C.I.	---	---	---	---	---	(6.3-8.5)
Unknown	0	0	0	0	0	0

\* Rates are per 100,000 age-specific population.

Note: The "----" is used for rates calculated on numbers less than ten and SEER numbers less than five. See Technical Notes for more information.



**Table 266. Thyroid Gland Cancer Inpatient Discharges by Gender, Charges, Length of Stay, and County/Region of Residence, Nevada Residents, 1996-2000**

Category	County/Region of Residence				
	Nevada Total	Clark	Washoe	All Other Counties	Unknown
<b>Total</b>					
Discharges	750	546	134	70	0
Rate*	8.0	8.7	8.0	5.0	---
95% C.I.	(7.4-8.6)	(7.9-9.4)	(6.7-9.6)	(3.9-6.4)	---
<b>Gender</b>					
Male	167	120	26	21	0
Rate*	3.6	3.9	3.2	2.9	---
95% C.I.	(3.1-4.3)	(3.3-4.8)	(2.0-5.0)	(1.8-4.8)	---
Female	583	426	108	49	0
Rate*	12.6	13.7	13.0	7.2	---
95% C.I.	(11.6-13.7)	(12.4-15.1)	(10.7-15.8)	(5.3-9.6)	---
Other/Unknown	0	0	0	0	0
<b>Inpatient Discharge Charges (\$)</b>					
Total Charges	\$8,268,800	\$5,802,653	\$1,677,976	\$788,171	---
Average Charges	\$11,025	\$10,628	\$12,522	\$11,260	---
Median Charges	\$9,952	\$9,610	\$11,166	\$10,512	---
<b>Discharge Length of Stay (LOS) (Days)</b>					
Total LOS	1,673	1,205	304	164	---
Average LOS	2.2	2.2	2.3	2.3	---
Median LOS	2.0	2.0	2.0	2.0	---

\* Rates are per 100,000 population and are age-adjusted to the 2000 US Standard population.

Note: The "---" is used for rates calculated on numbers less than ten. Caution should be used when comparing inpatient hospital discharge data to other data sources, since it is occurrence-based data. Please see Technical Notes for more information.

**Table 267. Thyroid Gland Cancer Mortality by Age Group and County/Region of Residence, Nevada Residents, 1996-2000**

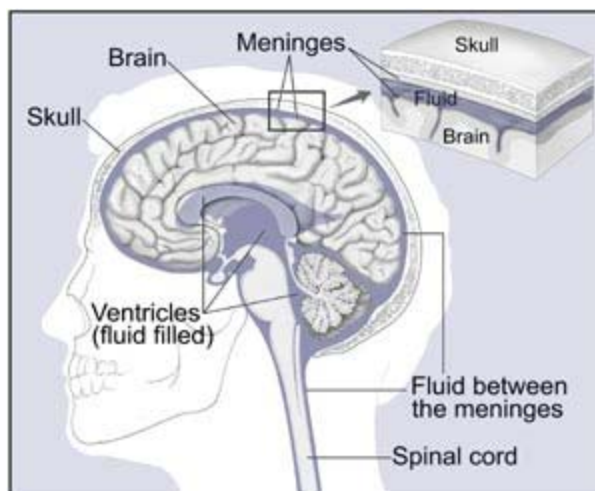
Category	County/Region of Residence			
	Nevada Total	Clark	Washoe	All Other Counties
<b>Total</b>				
<b>Mortality</b>	29	19	5	5
<b>Rate*</b>	0.3	0.3	0.3	0.4
<b>95% C.I.</b>	(0.2-0.4)	(0.2-0.4)	(0.0-0.6)	(0.0-0.7)
<b>Age Group</b>				
<1	0	0	0	0
Rate*	---	---	---	---
95% C.I.	---	---	---	---
1-4	0	0	0	0
Rate*	---	---	---	---
95% C.I.	---	---	---	---
5-14	0	0	0	0
Rate*	---	---	---	---
95% C.I.	---	---	---	---
15-24	0	0	0	0
Rate*	---	---	---	---
95% C.I.	---	---	---	---
25-34	0	0	0	0
Rate*	---	---	---	---
95% C.I.	---	---	---	---
35-44	0	0	0	0
Rate*	---	---	---	---
95% C.I.	---	---	---	---
45-54	3	3	0	0
Rate*	---	---	---	---
95% C.I.	---	---	---	---
55-64	7	5	1	1
Rate*	---	---	---	---
95% C.I.	---	---	---	---
65-74	7	4	1	2
Rate*	---	---	---	---
95% C.I.	---	---	---	---
75-84	9	6	1	2
Rate*	---	---	---	---
95% C.I.	---	---	---	---
85+	3	1	2	0
Rate*	---	---	---	---
95% C.I.	---	---	---	---
Unknown	0	0	0	0

\* Rates are per 100,000 age-specific population.  
 Note: The “---” is used for rates calculated on numbers less than ten.

# BRAIN AND OTHER CENTRAL NERVOUS SYSTEM CANCER

## GENERAL PROFILE<sup>4</sup>

**Figure 170. Anatomical Drawing of the Brain and Nearby Structures<sup>4</sup>**



**General Anatomy:** The brain is a soft, spongy mass of tissue. It is protected by the bones of the skull and three thin membranes called meninges. Watery fluid called cerebrospinal fluid cushions the brain. This fluid flows through spaces between the meninges and through spaces within the brain called ventricles. A network of nerves carries messages back and forth between the brain and the rest of the body. Some nerves go directly from the brain to the eyes, ears, and other parts of the head. Other nerves run through the spinal cord to connect the brain with the other parts of the body. Within the brain and spinal cord, glial cells surround nerve cells and hold them in place.

**Risk Factors:** Being male, being white, age (over 70 years of age), family history, and exposure to: radiation or certain chemicals: formaldehyde, vinyl chloride, and acrylonitrile.

**Signs and Symptoms:** Headaches (usually worse in the morning), nausea or vomiting, changes in speech, vision, or hearing, problems balancing or walking, changes in mood, personality, or ability to concentrate, problems with memory, muscle jerking or twitching (seizures or convulsions), and numbness or tingling in the arms or legs.

**Diagnosing the Cancer:** Physical exam, neurologic exam, computed tomography (CAT) scan, magnetic resonance imaging (MRI), angiogram, skull x-ray, spinal tap, myelogram, and biopsy.

**Treatment:** surgery (Craniotomy), radiation therapy (Fractionation, Hyperfractionation, Stereotactic, 3-dimensional conformal, and Proton beam), and chemotherapy

**Table 268. Brain and Other Central Nervous System Cancer Cases by Age Group and County/Region of Residence at Diagnosis, Nevada Residents (1996-2000) and SEER-11 (1995-1999)**

Category	County/Region of Residence					SEER 11 (1995-1999)
	Nevada Total	Clark	Washoe	All Other Counties	Unknown	
<b>Total</b>						
Cases	560	372	91	97	0	11,214
Rate*	6.0	5.9	5.6	7.1	---	6.1
95% C.I.	(5.5-6.5)	(5.3-6.5)	(4.4-6.7)	(5.7-8.5)	---	(5.9-6.2)
<b>Age Group</b>						
<1	3	1	1	1	0	105
Rate*	---	---	---	---	---	3.8
95% C.I.	---	---	---	---	---	(3.1-4.5)
1-4	15	13	1	1	0	403
Rate*	2.7	3.4	---	---	---	3.6
95% C.I.	(1.4-4.1)	(1.6-5.3)	---	---	---	(3.3-4.0)
5-14	35	22	6	7	0	741
Rate*	2.6	2.5	---	---	---	2.8
95% C.I.	(1.8-3.5)	(1.4-3.5)	---	---	---	(2.6-3.0)
15-24	20	11	4	5	0	499
Rate*	1.6	1.3	---	---	---	1.9
95% C.I.	(0.9-2.2)	(0.5-2.0)	---	---	---	(1.8-2.1)
25-34	41	29	6	6	0	868
Rate*	2.9	2.8	---	---	---	3.0
95% C.I.	(2.0-3.7)	(1.8-3.9)	---	---	---	(2.8-3.2)
35-44	55	35	7	13	0	1,264
Rate*	3.7	3.5	---	5.8	---	4.0
95% C.I.	(2.7-4.7)	(2.4-4.7)	---	(2.6-8.9)	---	(3.8-4.3)
45-54	73	48	14	11	0	1,559
Rate*	6.0	6.1	6.2	5.7	---	6.8
95% C.I.	(4.7-7.4)	(4.3-7.8)	(3.0-9.5)	(2.3-9.1)	---	(6.5-7.2)
55-64	105	69	19	17	0	1,749
Rate*	12.2	11.9	13.4	12.3	---	12.5
95% C.I.	(9.9-14.5)	(9.1-14.7)	(7.4-19.5)	(6.5-18.2)	---	(11.9-13.1)
65-74	108	76	13	19	0	2,097
Rate*	17.4	18.3	12.9	18.2	---	18.2
95% C.I.	(14.1-20.7)	(14.2-22.5)	(5.9-19.9)	(10.0-26.4)	---	(17.4-19.0)
75-84	84	54	15	15	0	1,554
Rate*	25.6	25.0	27.3	26.6	---	21.4
95% C.I.	(20.1-31.1)	(18.3-31.6)	(13.5-41.1)	(13.1-40.0)	---	(20.3-22.4)
85+	21	14	5	2	0	375
Rate*	29.8	32.7	---	---	---	15.1
95% C.I.	(17.1-42.6)	(15.6-49.8)	---	---	---	(13.6-16.7)
Unknown	0	0	0	0	0	0

\* Rates are per 100,000 age-specific population.

Note: The “---” is used for rates calculated on numbers less than ten and SEER numbers less than five. See Technical Notes for more information.

**Table 269. Brain and Other Central Nervous System Cancer Inpatient Discharges by Gender, Charges, Length of Stay, and County/Region of Residence, Nevada Residents, 1996-2000**

Category	County/Region of Residence				
	Nevada Total	Clark	Washoe	All Other Counties	Unknown
<b>Total</b>					
Discharges	728	510	115	102	1
Rate*	8.1	8.5	7.5	7.3	---
95% C.I.	(7.5-8.7)	(7.7-9.3)	(6.2-9.1)	(6.0-9.0)	---
<b>Gender</b>					
Male	426	307	58	60	1
Rate*	9.5	10.3	7.3	8.6	---
95% C.I.	(8.6-10.6)	(9.1-11.7)	(5.5-9.8)	(6.5-11.4)	---
Female	302	203	57	42	0
Rate*	6.7	6.7	7.4	6.1	---
95% C.I.	(6.0-7.5)	(5.8-7.7)	(5.6-9.6)	(4.4-8.3)	---
Other/Unknown	0	0	0	0	0
<b>Inpatient Discharge Charges (\$)</b>					
Total Charges	\$25,861,154	\$19,244,597	\$3,538,484	\$3,072,021	\$6,052
Average Charges	\$35,524	\$37,735	\$30,769	\$30,118	\$6,052
Median Charges	\$29,375	\$30,644	\$27,692	\$27,401	\$6,052
<b>Discharge Length of Stay (LOS) (Days)</b>					
Total LOS	5,676	4,178	819	678	1
Average LOS	7.8	8.2	7.1	6.6	1.0
Median LOS	5.0	5.0	5.0	5.0	1.0

\* Rates are per 100,000 population and are age-adjusted to the 2000 US Standard population.

Note: The "----" is used for rates calculated on numbers less than ten. Caution should be used when comparing inpatient hospital discharge data to other data sources, since it is occurrence-based data. Please see Technical Notes for more information.

**Table 270. Brain and Other Central Nervous System Cancer Mortality by Age Group and County/Region of Residence, Nevada Residents, 1996-2000**

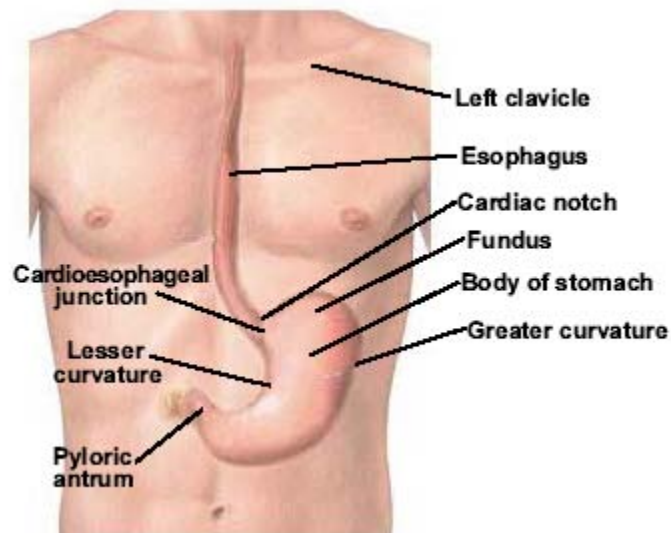
Category	County/Region of Residence			
	Nevada Total	Clark	Washoe	All Other Counties
<b>Total</b>				
<b>Mortality</b>	320	212	53	55
<b>Rate*</b>	3.4	3.4	3.2	4.0
<b>95% C.I.</b>	(3.1-3.8)	(2.9-3.8)	(2.4-4.1)	(3.0-5.1)
<b>Age Group</b>				
<1	0	0	0	0
Rate*	---	---	---	---
95% C.I.	---	---	---	---
1-4	3	3	0	0
Rate*	---	---	---	---
95% C.I.	---	---	---	---
5-14	9	6	2	1
Rate*	---	---	---	---
95% C.I.	---	---	---	---
15-24	3	1	1	1
Rate*	---	---	---	---
95% C.I.	---	---	---	---
25-34	14	12	2	0
Rate*	1.0	1.2	---	---
95% C.I.	(0.5-1.5)	(0.5-1.8)	---	---
35-44	30	21	4	5
Rate*	2.0	2.1	---	---
95% C.I.	(1.3-2.7)	(1.2-3.0)	---	---
45-54	35	24	9	2
Rate*	2.9	3.0	---	---
95% C.I.	(1.9-3.9)	(1.8-4.2)	---	---
55-64	72	52	9	11
Rate*	8.4	8.9	---	8.0
95% C.I.	(6.4-10.3)	(6.5-11.4)	---	(3.3-12.7)
65-74	81	55	10	16
Rate*	13.1	13.3	9.9	15.3
95% C.I.	(10.2-15.9)	(9.8-16.8)	(3.8-16.1)	(7.8-22.8)
75-84	58	32	11	15
Rate*	17.7	14.8	20.0	26.6
95% C.I.	(13.1-22.3)	(9.7-19.9)	(8.2-31.8)	(13.1-40.0)
85+	15	6	5	4
Rate*	21.3	---	---	---
95% C.I.	(10.5-32.1)	---	---	---
Unknown	0	0	0	0

\* Rates are per 100,000 age-specific population.  
 Note: The “---” is used for rates calculated on numbers less than ten.

## STOMACH CANCER

### GENERAL PROFILE<sup>4</sup>

**Figure 171. Anatomical Drawing of the Esophagus and Stomach<sup>5</sup>**



**General Anatomy:** The stomach is part of the digestive system. It is located in the upper abdomen, under the ribs. The upper part of the stomach connects to the esophagus, and the lower part leads into the small intestine. When food enters the stomach, muscles in the stomach wall create a rippling motion that mixes and mashes the food. At the same time, juices made by glands in the lining of the stomach help digest the food. After about 3 hours, the food becomes a liquid and moves into the small intestine, where digestion continues.

**Risk Factors:** While the cause of Stomach Cancer is still unknown common some people are more likely to be diagnosed with Stomach Cancer. It is more common in: people over 55 years of age, males, Blacks as a racial/ethnic group, and people who have had stomach surgery or have pernicious anemia, achlorhydria, or gastric atrophy (which generally result in lower than normal amounts of digestive juices) have an increased risk. Stomach Cancer is also more common in parts of the world like Japan, Korea, parts of Eastern Europe, and Latin America than in the United States.

**Signs and Symptoms:** Indigestion or a burning sensation (heartburn), discomfort or pain in the abdomen, nausea and vomiting, diarrhea or constipation, bloating of the stomach after meals, loss of appetite, weakness and fatigue, and bleeding (vomiting blood or having blood in the stool).

**Diagnosing the Cancer:** Fecal occult blood test, upper gastrointestinal (GI) x-ray series, and endoscopy are some of the common ways of diagnosing Stomach Cancer.

**Treatment:** surgery (Gastrectomy), chemotherapy, radiation therapy, and biological therapy.

**Table 271. Stomach Cancer Mortality by Age Group and County/Region of Residence at Diagnosis, Nevada Residents, 1996-2000**

Category	County/Region of Residence					SEER 11 (1995-1999)
	Nevada Total	Clark	Washoe	All Other Counties	Unknown	
<b>Total</b>						
<b>Cases</b>	544	373	104	67	0	15,187
<b>Rate*</b>	5.8	5.9	6.4	4.9	---	8.2
<b>95% C.I.</b>	(5.4-6.3)	(5.3-6.5)	(5.1-7.6)	(3.7-6.1)	---	(8.1-8.3)
<b>Age Group</b>						
<1	0	0	0	0	0	---
Rate*	---	---	---	---	---	---
95% C.I.	---	---	---	---	---	---
1-4	0	0	0	0	0	---
Rate*	---	---	---	---	---	---
95% C.I.	---	---	---	---	---	---
5-14	0	0	0	0	0	---
Rate*	---	---	---	---	---	---
95% C.I.	---	---	---	---	---	---
15-24	2	1	1	0	0	25
Rate*	---	---	---	---	---	0.1
95% C.I.	---	---	---	---	---	(0.1-0.1)
25-34	6	4	1	1	0	219
Rate*	---	---	---	---	---	0.7
95% C.I.	---	---	---	---	---	(0.6-0.8)
35-44	23	16	4	3	0	748
Rate*	1.5	1.6	---	---	---	2.4
95% C.I.	(0.9-2.2)	(0.8-2.4)	---	---	---	(2.2-2.6)
45-54	52	41	7	4	0	1,434
Rate*	4.3	5.2	---	---	---	6.3
95% C.I.	(3.1-5.5)	(3.6-6.8)	---	---	---	(5.9-6.6)
55-64	102	66	21	15	0	2,387
Rate*	11.8	11.4	14.8	10.9	---	17.0
95% C.I.	(9.5-14.1)	(8.6-14.1)	(8.5-21.2)	(5.4-16.4)	---	(16.4-17.7)
65-74	148	94	36	18	0	4,180
Rate*	23.9	22.7	35.7	17.2	---	36.2
95% C.I.	(20.0-27.7)	(18.1-27.3)	(24.0-47.4)	(9.3-25.2)	---	(35.1-37.3)
75-84	159	112	26	21	0	4,276
Rate*	48.5	51.8	47.2	37.2	---	58.8
95% C.I.	(41.0-56.1)	(42.2-61.4)	(29.1-65.4)	(21.3-53.1)	---	(57.1-60.6)
85+	52	39	8	5	0	1,914
Rate*	73.8	91.0	---	---	---	77.2
95% C.I.	(53.7-93.9)	(62.5-119.6)	---	---	---	(73.7-80.6)
Unknown	0	0	0	0	0	0

\* Rates are per 100,000 age-specific population.

Note: The "----" is used for rates calculated on numbers less than ten and SEER numbers less than five. See Technical Notes for more information.



**Table 272. Stomach Cancer Inpatient Discharges by Gender, Charges, Length of Stay, and County/Region of Residence, Nevada Residents, 1996-2000**

Category	County/Region of Residence				
	Nevada Total	Clark	Washoe	All Other Counties	Unknown
<b>Total</b>					
Discharges	571	410	106	55	0
Rate*	6.9	7.6	7.5	3.9	---
95% C.I.	(6.3-7.5)	(6.8-8.4)	(6.1-9.1)	(2.9-5.2)	---
<b>Gender</b>					
Male	389	279	68	42	0
Rate*	10.2	11.3	10.4	6.2	---
95% C.I.	(9.1-11.4)	(9.9-13.0)	(7.9-13.6)	(4.4-8.7)	---
Female	182	131	38	13	0
Rate*	4.2	4.6	5.0	1.8	---
95% C.I.	(3.6-4.8)	(3.8-5.4)	(3.6-7.0)	(1.0-3.2)	---
Other/Unknown	0	0	0	0	0
<b>Inpatient Discharge Charges (\$)</b>					
Total Charges	\$27,949,044	\$20,978,443	\$4,570,239	\$2,400,362	---
Average Charges	\$48,948	\$51,167	\$43,115	\$43,643	---
Median Charges	\$34,005	\$35,556	\$30,752	\$28,316	---
<b>Discharge Length of Stay (LOS) (Days)</b>					
Total LOS	6,318	4,663	1,089	566	---
Average LOS	11.1	11.4	10.3	10.3	---
Median LOS	9.0	9.0	8.0	9.0	---

\* Rates are per 100,000 population and are age-adjusted to the 2000 US Standard population.

Note: The "---" is used for rates calculated on numbers less than ten. Caution should be used when comparing inpatient hospital discharge data to other data sources, since it is occurrence-based data. Please see Technical Notes for more information.

**Table 273. Stomach Cancer Mortality by Age Group and County/Region of Residence, Nevada Residents, 1996-2000**

Category	County/Region of Residence			
	Nevada Total	Clark	Washoe	All Other Counties
<b>Total</b>				
<b>Mortality</b>	326	232	59	35
<b>Rate*</b>	3.5	3.7	3.6	2.6
<b>95% C.I.</b>	(3.1-3.9)	(3.2-4.2)	(2.7-4.5)	(1.7-3.4)
<b>Age Group</b>				
<1	0	0	0	0
Rate*	---	---	---	---
95% C.I.	---	---	---	---
1-4	0	0	0	0
Rate*	---	---	---	---
95% C.I.	---	---	---	---
5-14	0	0	0	0
Rate*	---	---	---	---
95% C.I.	---	---	---	---
15-24	0	0	0	0
Rate*	---	---	---	---
95% C.I.	---	---	---	---
25-34	2	2	0	0
Rate*	---	---	---	---
95% C.I.	---	---	---	---
35-44	14	11	3	0
Rate*	0.9	1.1	---	---
95% C.I.	(0.4-1.4)	(0.5-1.8)	---	---
45-54	30	25	2	3
Rate*	2.5	3.2	---	---
95% C.I.	(1.6-3.4)	(1.9-4.4)	---	---
55-64	56	41	12	3
Rate*	6.5	7.1	8.5	---
95% C.I.	(4.8-8.2)	(4.9-9.2)	(3.7-13.3)	---
65-74	82	55	14	13
Rate*	13.2	13.3	13.9	12.4
95% C.I.	(10.4-16.1)	(9.8-16.8)	(6.6-21.2)	(5.7-19.2)
75-84	109	76	20	13
Rate*	33.3	35.1	36.3	23.0
95% C.I.	(27.0-39.5)	(27.2-43.0)	(20.4-52.3)	(10.5-35.5)
85+	33	22	8	3
Rate*	46.8	51.4	---	---
95% C.I.	(30.9-62.8)	(29.9-72.8)	---	---
Unknown	0	0	0	0

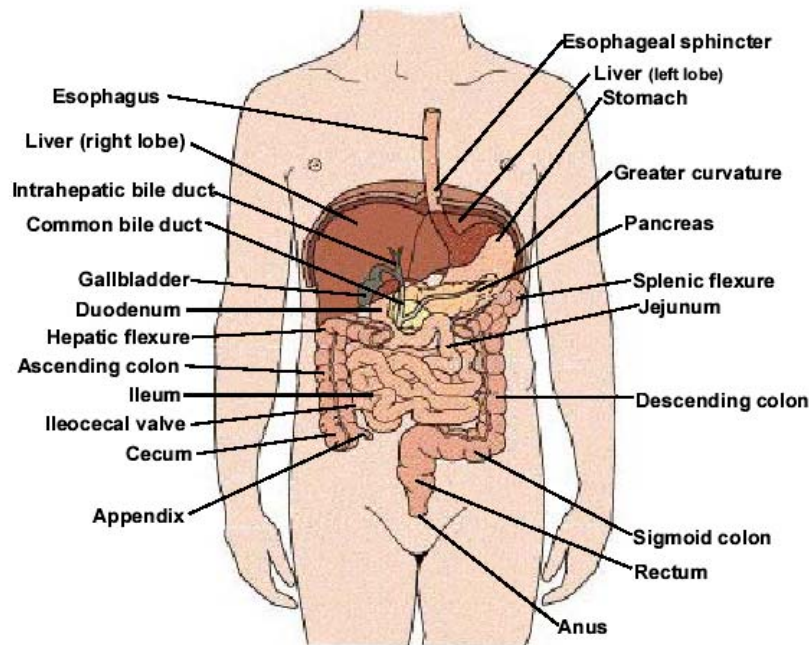
\* Rates are per 100,000 age-specific population.

Note: The "—" is used for rates calculated on numbers less than ten.

## LIVER AND INTRAHEPATIC BILE DUCTS CANCER

### GENERAL PROFILE<sup>4</sup>

Figure 172. Anatomical Drawing of the Digestive System<sup>5</sup>



**General Anatomy:** The liver is the largest organ in the body. It is found behind the ribs on the right side of the abdomen. The liver has two parts, a right lobe and a smaller left lobe. The liver has many important functions that keep a person healthy. It removes harmful material from the blood. It makes enzymes and bile that help digest food. It also converts food into substances needed for life and growth. The liver gets its supply of blood from two vessels. Most of its blood comes from the hepatic portal vein. The rest comes from the hepatic artery.

**Risk Factors:** Chronic liver infection (hepatitis), cirrhosis, Aflatoxin (type of mold), being male, family history, and age (over 60 years of age).

**Signs and Symptoms:** Pain in the upper abdomen on the right side; the pain may extend to the back and shoulder, swollen abdomen (bloating), weight loss, loss of appetite and feelings of fullness, weakness or feeling very tired, nausea and vomiting, yellow skin and eyes and dark urine from jaundice, and fever.

**Diagnosing the Cancer:** Physical exam, blood tests, computed tomography (CAT) scan, ultrasound test, magnetic resonance imaging (MRI), angiogram, and biopsy.

**Treatment:** surgery (Hepatectomy, Transplantation), radio frequency ablation, percutaneous ethanol injection, cryosurgery, hepatic arterial infusion, chemoembolization, chemotherapy, and radiation therapy.

**Table 274. Liver and Intrahepatic Bile Ducts Cancer Cases by Age Group and County/Region of Residence at Diagnosis, Nevada Residents (1996-2000) and SEER-11 (1995-1999)**

Category	County/Region of Residence					SEER 11 (1995-1999)
	Nevada Total	Clark	Washoe	All Other Counties	Unknown	
<b>Total</b>						
<b>Cases</b>	501	360	70	70	1	9,504
<b>Rate*</b>	5.4	5.7	4.3	5.1	---	5.1
<b>95% C.I.</b>	(4.9-5.9)	(5.1-6.3)	(3.3-5.3)	(3.9-6.3)	---	(5.0-5.2)
<b>Age Group</b>						
<1	2	2	0	0	0	30
Rate*	---	---	---	---	---	1.1
95% C.I.	---	---	---	---	---	(0.7-1.5)
1-4	6	3	2	1	0	51
Rate*	---	---	---	---	---	0.5
95% C.I.	---	---	---	---	---	(0.3-0.6)
5-14	1	0	0	1	0	27
Rate*	---	---	---	---	---	0.1
95% C.I.	---	---	---	---	---	(0.1-0.1)
15-24	3	2	1	0	0	45
Rate*	---	---	---	---	---	0.2
95% C.I.	---	---	---	---	---	(0.1-0.2)
25-34	0	0	0	0	0	98
Rate*	---	---	---	---	---	0.3
95% C.I.	---	---	---	---	---	(0.3-0.4)
35-44	21	14	2	5	0	464
Rate*	1.4	1.4	---	---	---	1.5
95% C.I.	(0.8-2.0)	(0.7-2.2)	---	---	---	(1.3-1.6)
45-54	75	62	6	6	1	1,402
Rate*	6.2	7.8	---	---	---	6.1
95% C.I.	(4.8-7.6)	(5.9-9.8)	---	---	---	(5.8-6.4)
55-64	105	76	14	15	0	1,913
Rate*	12.2	13.1	9.9	10.9	---	13.7
95% C.I.	(9.9-14.5)	(10.1-16.0)	(4.7-15.1)	(5.4-16.4)	---	(13.1-14.3)
65-74	154	106	27	21	0	2,662
Rate*	24.8	25.6	26.8	20.1	---	23.1
95% C.I.	(20.9-28.8)	(20.7-30.4)	(16.7-36.9)	(11.5-28.7)	---	(22.2-23.9)
75-84	110	81	13	16	0	2,137
Rate*	33.6	37.5	23.6	28.3	---	29.4
95% C.I.	(27.3-39.8)	(29.3-45.6)	(10.8-36.5)	(14.4-42.2)	---	(28.2-30.6)
85+	24	14	5	5	0	675
Rate*	34.1	32.7	---	---	---	27.2
95% C.I.	(20.4-47.7)	(15.6-49.8)	---	---	---	(25.2-29.3)
Unknown	0	0	0	0	0	0

\* Rates are per 100,000 age-specific population.

Note: The “---” is used for rates calculated on numbers less than ten and SEER numbers less than five. See Technical Notes for more information.

**Table 275. Liver and Intrahepatic Bile Ducts Cancer Inpatient Discharges by Gender, Charges, Length of Stay, and County/Region of Residence, Nevada Residents, 1996-2000**

Category	County/Region of Residence				
	Nevada Total	Clark	Washoe	All Other Counties	Unknown
<b>Total</b>					
Discharges	338	271	41	26	0
Rate*	3.9	4.7	2.9	1.8	---
95% C.I.	(3.5-4.3)	(4.1-5.3)	(2.0-4.0)	(1.2-2.7)	---
<b>Gender</b>					
Male	234	192	24	18	0
Rate*	5.6	6.8	3.9	2.4	---
95% C.I.	(4.8-6.4)	(5.8-8.0)	(2.4-6.3)	(1.4-4.2)	---
Female	104	79	17	8	0
Rate*	2.3	2.7	2.2	---	---
95% C.I.	(1.9-2.8)	(2.1-3.4)	(1.3-3.5)	---	---
Other/Unknown	0	0	0	0	0
<b>Inpatient Discharge Charges (\$)</b>					
Total Charges	\$8,504,961	\$7,505,425	\$642,474	\$357,062	---
Average Charges	\$25,163	\$27,695	\$15,670	\$13,733	---
Median Charges	\$17,071	\$18,867	\$13,155	\$10,258	---
<b>Discharge Length of Stay (LOS) (Days)</b>					
Total LOS	2,308	1,940	263	105	---
Average LOS	6.8	7.2	6.4	4.0	---
Median LOS	5.0	5.0	6.0	3.0	---

\* Rates are per 100,000 population and are age-adjusted to the 2000 US Standard population.

Note: The "----" is used for rates calculated on numbers less than ten. Caution should be used when comparing inpatient hospital discharge data to other data sources, since it is occurrence-based data. Please see Technical Notes for more information.

**Table 276. Liver and Intrahepatic Bile Ducts Cancer Mortality by Age Group and County/Region of Residence, Nevada Residents, 1996-2000**

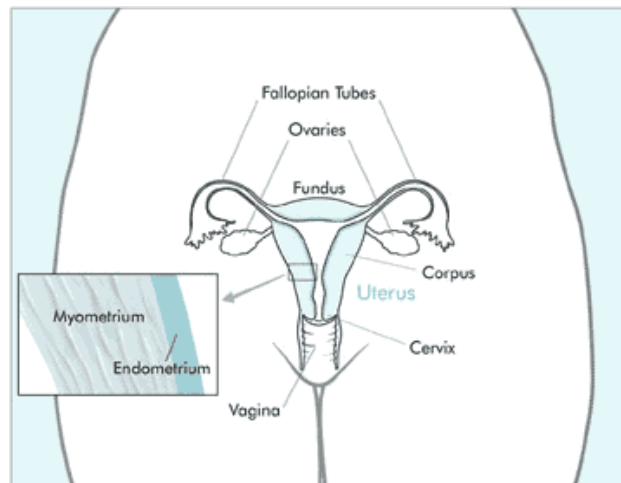
Category	County/Region of Residence			
	Nevada Total	Clark	Washoe	All Other Counties
<b>Total</b>				
<b>Mortality</b>	388	278	53	57
<b>Rate*</b>	4.2	4.4	3.2	4.2
<b>95% C.I.</b>	(3.8-4.6)	(3.9-4.9)	(2.4-4.1)	(3.1-5.2)
<b>Age Group</b>				
<1	0	0	0	0
Rate*	---	---	---	---
95% C.I.	---	---	---	---
1-4	1	0	0	1
Rate*	---	---	---	---
95% C.I.	---	---	---	---
5-14	1	0	0	1
Rate*	---	---	---	---
95% C.I.	---	---	---	---
15-24	3	2	0	1
Rate*	---	---	---	---
95% C.I.	---	---	---	---
25-34	1	1	0	0
Rate*	---	---	---	---
95% C.I.	---	---	---	---
35-44	8	7	0	1
Rate*	---	---	---	---
95% C.I.	---	---	---	---
45-54	56	48	5	3
Rate*	4.6	6.1	---	---
95% C.I.	(3.4-5.8)	(4.3-7.8)	---	---
55-64	72	50	10	12
Rate*	8.4	8.6	7.1	8.7
95% C.I.	(6.4-10.3)	(6.2-11.0)	(2.7-11.5)	(3.8-13.6)
65-74	126	86	23	17
Rate*	20.3	20.7	22.8	16.3
95% C.I.	(16.8-23.9)	(16.4-25.1)	(13.5-32.1)	(8.5-24.0)
75-84	91	63	11	17
Rate*	27.8	29.1	20.0	30.1
95% C.I.	(22.1-33.5)	(21.9-36.3)	(8.2-31.8)	(15.8-44.4)
85+	29	21	4	4
Rate*	41.2	49.0	---	---
95% C.I.	(26.2-56.1)	(28.1-70.0)	---	---
Unknown	0	0	0	0

\* Rates are per 100,000 age-specific population.  
 Note: The “---” is used for rates calculated on numbers less than ten.

## CERVICAL CANCER

### GENERAL PROFILE<sup>4</sup>

**Figure 173. Anatomical Drawing of the Female Reproductive System<sup>4</sup>**



**General Anatomy:** The cervix is the lower, narrow part of the uterus (womb). The uterus, a hollow, pear-shaped organ, is located in a woman's lower abdomen, between the bladder and the rectum. The cervix forms a canal that opens into the vagina, which leads to the outside of the body. Cells on the surface of the cervix sometimes appear abnormal but not cancerous. Scientists believe that some abnormal changes in cells on the cervix are the first step in a series of slow changes that can lead to cancer years later. If these changes form abnormal cells that spread deeper into the cervix or to other tissues or organs, the disease is then called cervical cancer, or invasive cervical cancer.

**Risk Factors:** Researchers believe that, in many cases, cervical cancer develops when two or more risk factors act together. These include: women who began having sexual intercourse before age 18, women who have had many sexual partners, women whose partners began having sexual intercourse at a young age, have had many sexual partners, or were previously married to women who had cervical cancer, some sexually transmitted human papillomaviruses (HPVs), smoking, women whose mothers were given the drug diethylstilbestrol (DES) during pregnancy to prevent miscarriage, weakened immune systems, and the use of oral contraceptives (the pill).

**Signs and Symptoms:** Precancerous changes of the cervix usually do not cause pain. In fact, they generally do not cause any symptoms until abnormal cervical cells become cancerous and invade nearby tissue, unless a woman has a pelvic exam and a Pap test. Symptoms include: abnormal bleeding (longer and heavier than usual), bleeding after menopause, and increased vaginal discharge is another symptom of cervical cancer.

**Diagnosing the Cancer:** Pap Smear tests (Early Detection), colposcopy, endocervical curettage, conization, dilation and curettage,

**Treatment:** Surgery (Hysterectomy), cryosurgery, cauterization, laser surgery, conization, radiation therapy, and chemotherapy.

**Table 277. Cervical Cancer Screening by County/Region of Residence, Education, Age Group, and Income, Nevada Residents, 1996-2000**

Responses	Answers						Total
	Yes			No			
	Number	Percent*	95% C.I.	Number	Percent*	95% C.I.	
<b>Total</b>							
<b>Responses</b>	5,339	95.3%	(94.7%-95.9%)	244	4.7%	(4.1%-5.3%)	5,583
<b>County/Region of Residence</b>							
Clark County	1,711	95.2%	(94.2%-96.2%)	82	4.8%	(3.8%-5.8%)	1,793
Washoe County	1,769	95.7%	(94.8%-96.6%)	79	4.3%	(3.4%-5.2%)	1,848
All Other Counties	1,859	95.7%	(94.8%-96.6%)	83	4.3%	(3.4%-5.2%)	1,942
<b>Education</b>							
Less than High School	457	88.6%	(85.8%-91.4%)	42	11.4%	(8.6%-14.2%)	499
High School	1,715	95.0%	(94.0%-96.0%)	95	5.0%	(4.0%-6.0%)	1,810
Some Post High School	1,885	96.2%	(95.4%-97.0%)	76	3.8%	(3.0%-4.6%)	1,961
College Graduate	1,270	97.3%	(96.4%-98.2%)	31	2.7%	(1.8%-3.6%)	1,301
<b>Age Group</b>							
18-24 years old	425	84.1%	(80.9%-87.3%)	83	15.9%	(12.7%-19.1%)	508
25-34 years old	1,008	96.1%	(94.9%-97.3%)	30	3.9%	(2.7%-5.1%)	1,038
35-44 years old	1,284	98.3%	(97.6%-99.0%)	22	1.7%	(1.0%-2.4%)	1,306
45-54 years old	1,033	98.6%	(97.9%-99.3%)	17	1.4%	(0.7%-2.1%)	1,050
55-64 years old	678	98.4%	(97.5%-99.3%)	14	1.6%	(0.7%-2.5%)	692
65+ years old	887	92.0%	(90.3%-93.7%)	76	8.0%	(6.3%-9.7%)	963
<b>Income</b>							
Less than \$15,000	605	92.9%	(90.9%-94.9%)	44	7.1%	(5.1%-9.1%)	649
\$15,000 - \$24,999	493	94.8%	(92.9%-96.7%)	33	5.2%	(3.3%-7.1%)	526
\$25,000 - \$34,999	820	95.2%	(93.8%-96.6%)	43	4.8%	(3.4%-6.2%)	863
\$35,000 - \$49,999	1,042	97.1%	(96.1%-98.1%)	21	2.9%	(1.9%-3.9%)	1,063
\$50,000 or More	1,546	98.0%	(97.3%-98.7%)	23	2.0%	(1.3%-2.7%)	1,569

\*Denominator is persons age 18-64 and excludes missing, don't know, and refused responses.

Note: This table includes those respondents who answered "Yes" or "No" to the following question:

- 1) A Pap smear is a test for cancer of the cervix. Have you ever had a Pap smear?



**Table 278. Cervical Cancer Cases by Age Group and County/Region of Residence at Diagnosis, Nevada Residents (1996-2000) and SEER-11 (1995-1999)**

Category	County/Region of Residence					SEER 11 (1995-1999)
	Nevada Total	Clark	Washoe	All Other Counties	Unknown	
<b>Total</b>						
<b>Cases</b>	497	366	83	48	0	9,206
<b>Rate*</b>	10.9	11.8	10.3	7.1	---	9.8
<b>95% C.I.</b>	(9.9-11.8)	(10.6-13.0)	(8.1-12.5)	(5.1-9.1)	---	(9.6-10.0)
<b>Age Group</b>						
<1	0	0	0	0	0	---
Rate*	---	---	---	---	---	---
95% C.I.	---	---	---	---	---	---
1-4	0	0	0	0	0	---
Rate*	---	---	---	---	---	---
95% C.I.	---	---	---	---	---	---
5-14	0	0	0	0	0	---
Rate*	---	---	---	---	---	---
95% C.I.	---	---	---	---	---	---
15-24	4	3	0	1	0	130
Rate*	---	---	---	---	---	1.0
95% C.I.	---	---	---	---	---	(0.9-1.2)
25-34	59	42	11	6	0	1,390
Rate*	8.6	8.6	9.0	---	---	9.6
95% C.I.	(6.4-10.8)	(6.0-11.2)	(3.7-14.4)	---	---	(9.1-10.1)
35-44	127	95	25	7	0	2,483
Rate*	17.6	20.0	18.4	---	---	15.8
95% C.I.	(14.5-20.7)	(16.0-24.1)	(11.2-25.6)	---	---	(15.2-16.4)
45-54	112	82	16	14	0	2,020
Rate*	18.8	20.9	14.6	14.9	---	17.4
95% C.I.	(15.3-22.2)	(16.3-25.4)	(7.4-21.7)	(7.1-22.7)	---	(16.6-18.1)
55-64	96	68	15	13	0	1,258
Rate*	22.2	23.0	21.5	19.3	---	17.3
95% C.I.	(17.8-26.7)	(17.6-28.5)	(10.6-32.4)	(8.8-29.8)	---	(16.3-18.2)
65-74	63	49	10	4	0	1,033
Rate*	20.1	23.3	19.2	---	---	16.2
95% C.I.	(15.1-25.0)	(16.8-29.9)	(7.3-31.1)	---	---	(15.2-17.2)
75-84	25	19	3	3	0	652
Rate*	13.9	16.1	---	---	---	14.9
95% C.I.	(8.4-19.3)	(8.8-23.3)	---	---	---	(13.8-16.1)
85+	11	8	3	0	0	239
Rate*	23.0	---	---	---	---	13.7
95% C.I.	(9.4-36.6)	---	---	---	---	(12.0-15.5)
Unknown	0	0	0	0	0	0

\* Rates are per 100,000 age-specific female population.

Note: The "----" is used for rates calculated on numbers less than ten and SEER numbers less than five. See Technical Notes for more information.

**Table 279. Cervical Cancer Inpatient Discharges by Gender, Charges, Length of Stay, and County/Region of Residence, Nevada Residents, 1996-2000**

Category	County/Region of Residence				
	Nevada Total	Clark	Washoe	All Other Counties	Unknown
<b>Total</b>					
Discharges	611	463	82	66	0
Rate*	6.6	7.5	5.0	4.6	---
95% C.I.	(6.1-7.2)	(6.8-8.3)	(4.0-6.2)	(3.6-6.0)	---
<b>Gender</b>					
Male	0	0	0	0	0
Rate*	---	---	---	---	---
95% C.I.	---	---	---	---	---
Female	611	463	82	66	0
Rate*	13.3	15.1	10.0	9.4	---
95% C.I.	(12.3-14.4)	(13.8-16.6)	(7.9-12.5)	(7.2-12.0)	---
Other/Unknown	0	0	0	0	0
<b>Inpatient Discharge Charges (\$)</b>					
Total Charges	\$12,449,843	\$9,340,499	\$1,949,138	\$1,160,206	---
Average Charges	\$20,376	\$20,174	\$23,770	\$17,579	---
Median Charges	\$15,940	\$15,893	\$19,656	\$12,092	---
<b>Discharge Length of Stay (LOS) (Days)</b>					
Total LOS	2,803	2,182	366	255	---
Average LOS	4.6	4.7	4.5	3.9	---
Median LOS	3.0	3.0	3.0	3.0	---

\* Rates are per 100,000 population and are age-adjusted to the 2000 US Standard population.

Note: The "----" is used for rates calculated on numbers less than ten. Caution should be used when comparing inpatient hospital discharge data to other data sources, since it is occurrence-based data. Please see Technical Notes for more information.

**Table 280. Cervical Cancer Mortality by Age Group and County/Region of Residence, Nevada Residents, 1996-2000**

Category	County/Region of Residence			
	Nevada Total	Clark	Washoe	All Other Counties
<b>Total</b>				
<b>Cases</b>	133	99	21	13
<b>Rate*</b>	2.9	3.2	2.6	1.9
<b>95% C.I.</b>	(2.4-3.4)	(2.6-3.8)	(1.5-3.7)	(0.9-3.0)
<b>Age Group</b>				
<1	0	0	0	0
Rate*	---	---	---	---
95% C.I.	---	---	---	---
1-4	0	0	0	0
Rate*	---	---	---	---
95% C.I.	---	---	---	---
5-14	0	0	0	0
Rate*	---	---	---	---
95% C.I.	---	---	---	---
15-24	0	0	0	0
Rate*	---	---	---	---
95% C.I.	---	---	---	---
25-34	10	7	3	0
Rate*	1.5	---	---	---
95% C.I.	(0.6-2.4)	---	---	---
35-44	24	21	3	0
Rate*	3.3	4.4	---	---
95% C.I.	(2.0-4.7)	(2.5-6.3)	---	---
45-54	38	28	6	4
Rate*	6.4	7.1	---	---
95% C.I.	(4.3-8.4)	(4.5-9.8)	---	---
55-64	17	13	1	3
Rate*	3.9	4.4	---	---
95% C.I.	(2.1-5.8)	(2.0-6.8)	---	---
65-74	23	15	4	4
Rate*	7.3	7.1	---	---
95% C.I.	(4.3-10.3)	(3.5-10.8)	---	---
75-84	13	9	2	2
Rate*	7.2	---	---	---
95% C.I.	(3.3-11.1)	---	---	---
85+	8	6	2	0
Rate*	---	---	---	---
95% C.I.	---	---	---	---
Unknown	0	0	0	0

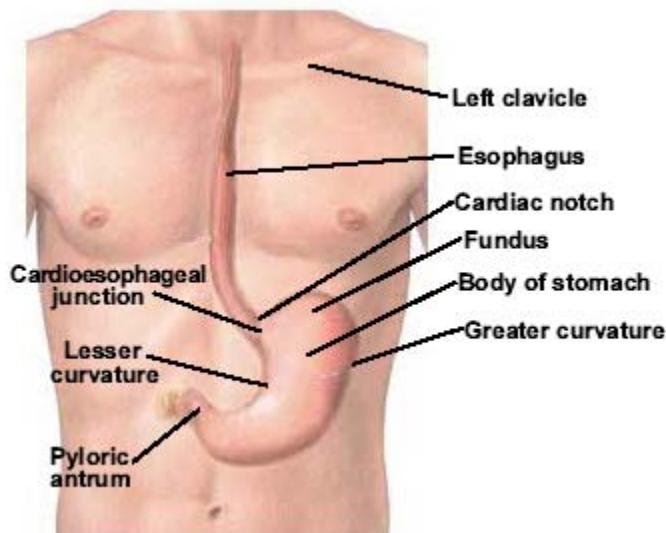
\* Rates are per 100,000 age-specific female population.

Note: The "----" is used for rates calculated on numbers less than ten.

## ESOPHAGEAL CANCER

### GENERAL PROFILE<sup>4</sup>

Figure 174. Anatomical Drawing of the Esophagus and Stomach<sup>5</sup>



**General Anatomy:** The esophagus is a hollow tube that carries food and liquids from the throat to the stomach. When a person swallows, the muscular walls of the esophagus contract to push food down into the stomach. Glands in the lining of the esophagus produce mucus, which keeps the passageway moist and makes swallowing easier. The esophagus is located just behind the trachea (windpipe). In an adult, the esophagus is about 10 inches long.

**Risk Factors:** Age, (over 60 years of age), being male, tobacco use, chronic and/or heavy alcohol use, Barrett's Esophagus (Long-term irritation from gastric reflux), medical history, and other types of irritation that cause significant irritation or damage to the lining of the esophagus (swallowing lye or other caustic substances) can increase the risk of developing esophageal cancer.

**Signs and Symptoms:** Difficult or painful swallowing, severe weight loss, pain in the throat or back, behind the breastbone or between the shoulder blades, hoarseness or chronic cough, vomiting, and coughing up blood are some common symptoms of Esophageal Cancer.

**Diagnosing the Cancer:** Barium swallow x-rays (also called an Esophagram), biopsy procedures (Esophagoscopy/Endoscopy), computed tomography (CAT) scan, bone scan, and bronchoscopy are common ways of diagnosing this type of cancer.

**Treatment:** Surgery (Esophagectomy), radiation therapy, chemotherapy, laser therapy, and photodynamic therapy (PDT).

**Table 281. Esophageal Cancer Cases by Age Group and County/Region of Residence at Diagnosis, Nevada Residents (1996-2000) and SEER-11 (1995-1999)**

Category	County/Region of Residence					SEER 11 (1995-1999)
	Nevada Total	Clark	Washoe	All Other Counties	Unknown	
<b>Total</b>						
<b>Cases</b>	444	311	76	57	0	7,483
<b>Rate*</b>	4.8	4.9	4.6	4.2	---	4.0
<b>95% C.I.</b>	(4.3-5.2)	(4.4-5.5)	(3.6-5.7)	(3.1-5.2)	---	(3.9-4.1)
<b>Age Group</b>						
<1	0	0	0	0	0	---
Rate*	---	---	---	---	---	---
95% C.I.	---	---	---	---	---	---
1-4	0	0	0	0	0	---
Rate*	---	---	---	---	---	---
95% C.I.	---	---	---	---	---	---
5-14	0	0	0	0	0	---
Rate*	---	---	---	---	---	---
95% C.I.	---	---	---	---	---	---
15-24	0	0	0	0	0	6
Rate*	---	---	---	---	---	---
95% C.I.	---	---	---	---	---	---
25-34	0	0	0	0	0	31
Rate*	---	---	---	---	---	0.1
95% C.I.	---	---	---	---	---	(0.1-0.1)
35-44	16	11	3	2	0	205
Rate*	1.1	1.1	---	---	---	0.7
95% C.I.	(0.5-1.6)	(0.5-1.8)	---	---	---	(0.6-0.7)
45-54	47	34	4	9	0	877
Rate*	3.9	4.3	---	---	---	3.8
95% C.I.	(2.8-5.0)	(2.8-5.7)	---	---	---	(3.6-4.1)
55-64	138	92	30	16	0	1,641
Rate*	16.0	15.8	21.2	11.6	---	11.7
95% C.I.	(13.4-18.7)	(12.6-19.1)	(13.6-28.8)	(5.9-17.3)	---	(11.2-12.3)
65-74	135	92	23	20	0	2,431
Rate*	21.8	22.2	22.8	19.1	---	21.1
95% C.I.	(18.1-25.5)	(17.7-26.7)	(13.5-32.1)	(10.8-27.5)	---	(20.2-21.9)
75-84	90	72	11	7	0	1,747
Rate*	27.5	33.3	20.0	---	---	24.0
95% C.I.	(21.8-33.1)	(25.6-41.0)	(8.2-31.8)	---	---	(22.9-25.2)
85+	18	10	5	3	0	544
Rate*	25.6	23.3	---	---	---	21.9
95% C.I.	(13.7-37.4)	(8.9-37.8)	---	---	---	(20.1-23.8)
Unknown	0	0	0	0	0	0

\* Rates are per 100,000 age-specific population.

Note: The “---” is used for rates calculated on numbers less than ten and SEER numbers less than five. See Technical Notes for more information.

**Table 282. Esophageal Cancer Inpatient Discharges by Gender, Charges, Length of Stay, and County/Region of Residence, Nevada Residents, 1996-2000**

Category	County/Region of Residence				
	Nevada Total	Clark	Washoe	All Other Counties	Unknown
<b>Total</b>					
Discharges	293	216	42	35	0
Rate*	3.4	3.7	2.9	2.4	---
95% C.I.	(3.0-3.8)	(3.2-4.3)	(2.1-4.0)	(1.6-3.4)	---
<b>Gender</b>					
Male	223	160	34	29	0
Rate*	5.3	5.7	5.1	3.9	---
95% C.I.	(4.6-6.2)	(4.8-6.9)	(3.5-7.6)	(2.6-6.0)	---
Female	70	56	8	6	0
Rate*	1.6	1.9	---	---	---
95% C.I.	(1.2-2.0)	(1.4-2.5)	---	---	---
Other/Unknown	0	0	0	0	0
<b>Inpatient Discharge Charges (\$)</b>					
Total Charges	\$12,470,581	\$9,972,796	\$1,316,354	\$1,181,431	---
Average Charges	\$42,562	\$46,170	\$31,342	\$33,755	---
Median Charges	\$24,270	\$24,457	\$25,724	\$21,466	---
<b>Discharge Length of Stay (LOS) (Days)</b>					
Total LOS	2,945	2,274	368	303	---
Average LOS	10.1	10.5	8.8	8.7	---
Median LOS	7.0	7.0	7.5	7.0	---

\* Rates are per 100,000 population and are age-adjusted to the 2000 US Standard population.

Note: The “---” is used for rates calculated on numbers less than ten. Caution should be used when comparing inpatient hospital discharge data to other data sources, since it is occurrence-based data. Please see Technical Notes for more information.

**Table 283. Esophageal Cancer Mortality by Age Group and County/Region of Residence, Nevada Residents, 1996-2000**

Category	County/Region of Residence			
	Nevada Total	Clark	Washoe	All Other Counties
<b>Total</b>				
<b>Mortality</b>	368	252	72	44
<b>Rate*</b>	4.0	4.0	4.4	3.2
<b>95% C.I.</b>	(3.6-4.4)	(3.5-4.5)	(3.4-5.4)	(2.3-4.2)
<b>Age Group</b>				
<1	0	0	0	0
Rate*	---	---	---	---
95% C.I.	---	---	---	---
1-4	0	0	0	0
Rate*	---	---	---	---
95% C.I.	---	---	---	---
5-14	0	0	0	0
Rate*	---	---	---	---
95% C.I.	---	---	---	---
15-24	0	0	0	0
Rate*	---	---	---	---
95% C.I.	---	---	---	---
25-34	0	0	0	0
Rate*	---	---	---	---
95% C.I.	---	---	---	---
35-44	11	9	2	0
Rate*	0.7	---	---	---
95% C.I.	(0.3-1.2)	---	---	---
45-54	29	22	3	4
Rate*	2.4	2.8	---	---
95% C.I.	(1.5-3.3)	(1.6-3.9)	---	---
55-64	119	79	24	16
Rate*	13.8	13.6	17.0	11.6
95% C.I.	(11.3-16.3)	(10.6-16.6)	(10.2-23.8)	(5.9-17.3)
65-74	115	72	26	17
Rate*	18.6	17.4	25.8	16.3
95% C.I.	(15.2-21.9)	(13.4-21.4)	(15.9-35.7)	(8.5-24.0)
75-84	82	65	12	5
Rate*	25.0	30.1	21.8	---
95% C.I.	(19.6-30.4)	(22.8-37.4)	(9.5-34.1)	---
85+	12	5	5	2
Rate*	17.0	---	---	---
95% C.I.	(7.4-26.7)	---	---	---
Unknown	0	0	0	0

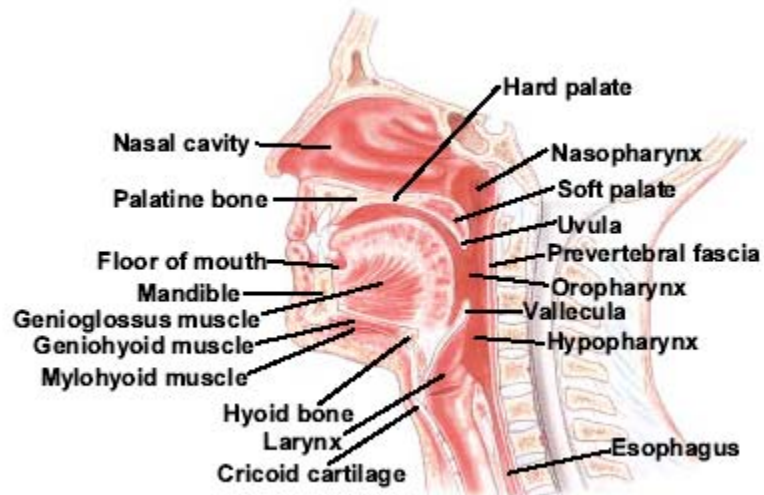
\* Rates are per 100,000 age-specific population.

Note: The "—" is used for rates calculated on numbers less than ten.

## LARYNX CANCER

### GENERAL PROFILE<sup>4</sup>

Figure 175. Anatomy of the Oral Cavity<sup>5</sup>



**General Anatomy:** The larynx, also called the voice box, is a 2-inch-long, tube-shaped organ made of cartilage in the neck. We use the larynx when we breathe, talk, or swallow. The larynx is at the top of the windpipe (trachea). The large cartilage that forms the front of the larynx is sometimes called the Adam's apple. The vocal cords, two bands of muscle, form a "V" inside the larynx.

**Risk Factors:** Cancer of the larynx occurs most often in people over the age of 55, men, Blacks, as a racial/ethnic group, smokers, and those who work with asbestos.

**Signs and Symptoms:** The symptoms of cancer of the larynx depend mainly on the size and location of the tumor. Most cancers of the larynx begin on the vocal cords. These tumors are seldom painful, but they almost always cause hoarseness or other changes in the voice. Tumors in the area above the vocal cords may cause a lump on the neck, a sore throat, or an earache. Tumors that begin in the area below the vocal cords are rare. They can make it hard to breathe, and breathing may be noisy.

A cough that doesn't go away or the feeling of a lump in the throat may also be warning signs of cancer of the larynx. As the tumor grows, it may cause pain, weight loss, bad breath, and frequent choking on food. In some cases, a tumor in the larynx can make it hard to swallow.

**Diagnosing the Cancer:** Direct and indirect laryngoscopy, computed tomography (CAT) scan, and magnetic resonance imaging (MRI) are some common ways of diagnosing cancer of the larynx.

**Treatment:** Radiation therapy, surgery (Partial or Total Laryngectomy), and chemotherapy are the most common treatment options for those diagnosed with Larynx Cancer.



**Table 284. Larynx Cancer Cases by Age Group and County/Region of Residence at Diagnosis, Nevada Residents (1996-2000) and SEER-11 (1995-1999)**

Category	County/Region of Residence					SEER 11 (1995-1999)
	Nevada Total	Clark	Washoe	All Other Counties	Unknown	
<b>Total</b>						
<b>Cases</b>	371	231	79	61	0	6,718
<b>Rate*</b>	4.0	3.7	4.8	4.5	---	3.6
<b>95% C.I.</b>	(3.6-4.4)	(3.2-4.1)	(3.8-5.9)	(3.3-5.6)	---	(3.5-3.7)
<b>Age Group</b>						
<1	0	0	0	0	0	---
Rate*	---	---	---	---	---	---
95% C.I.	---	---	---	---	---	---
1-4	0	0	0	0	0	---
Rate*	---	---	---	---	---	---
95% C.I.	---	---	---	---	---	---
5-14	0	0	0	0	0	---
Rate*	---	---	---	---	---	---
95% C.I.	---	---	---	---	---	---
15-24	0	0	0	0	0	---
Rate*	---	---	---	---	---	---
95% C.I.	---	---	---	---	---	---
25-34	3	2	1	0	0	30
Rate*	---	---	---	---	---	0.1
95% C.I.	---	---	---	---	---	(0.1-0.1)
35-44	11	4	5	2	0	282
Rate*	0.7	---	---	---	---	0.9
95% C.I.	(0.3-1.2)	---	---	---	---	(0.8-1.0)
45-54	62	40	13	9	0	957
Rate*	5.1	5.0	5.8	---	---	4.2
95% C.I.	(3.9-6.4)	(3.5-6.6)	(2.6-8.9)	---	---	(3.9-4.4)
55-64	111	82	15	14	0	1,777
Rate*	12.9	14.1	10.6	10.1	---	12.7
95% C.I.	(10.5-15.3)	(11.1-17.2)	(5.2-16.0)	(4.8-15.5)	---	(12.1-13.3)
65-74	109	57	26	26	0	2,235
Rate*	17.6	13.7	25.8	24.9	---	19.4
95% C.I.	(14.3-20.9)	(10.2-17.3)	(15.9-35.7)	(15.3-34.4)	---	(18.6-20.2)
75-84	62	39	16	7	0	1,192
Rate*	18.9	18.0	29.1	---	---	16.4
95% C.I.	(14.2-23.6)	(12.4-23.7)	(14.8-43.3)	---	---	(15.5-17.3)
85+	13	7	3	3	0	239
Rate*	18.5	---	---	---	---	9.6
95% C.I.	(8.4-28.5)	---	---	---	---	(8.4-10.9)
Unknown	0	0	0	0	0	0

\* Rates are per 100,000 age-specific population.

Note: The “---” is used for rates calculated on numbers less than ten and SEER numbers less than five. See Technical Notes for more information.

**Table 285. Larynx Cancer Inpatient Discharges by Gender, Charges, Length of Stay, and County/Region of Residence, Nevada Residents, 1996-2000**

Category	County/Region of Residence				
	Nevada Total	Clark	Washoe	All Other Counties	Unknown
<b>Total</b>					
Discharges	226	142	47	37	0
Rate*	2.5	2.4	3.0	2.5	---
95% C.I.	(2.2-2.9)	(2.0-2.9)	(2.2-4.1)	(1.7-3.5)	---
<b>Gender</b>					
Male	172	109	30	33	0
Rate*	4.0	4.0	3.8	4.5	---
95% C.I.	(3.4-4.8)	(3.2-5.0)	(2.6-5.8)	(3.1-6.6)	---
Female	54	33	17	4	0
Rate*	1.2	1.1	2.2	---	---
95% C.I.	(0.9-1.6)	(0.7-1.5)	(1.3-3.6)	---	---
Other/Unknown	0	0	0	0	0
<b>Inpatient Discharge Charges (\$)</b>					
Total Charges	\$8,982,071	\$6,203,467	\$1,696,114	\$1,082,490	---
Average Charges	\$39,744	\$43,686	\$36,088	\$29,256	---
Median Charges	\$29,728	\$30,779	\$30,236	\$25,340	---
<b>Discharge Length of Stay (LOS) (Days)</b>					
Total LOS	2,174	1,387	467	320	---
Average LOS	9.6	9.8	9.9	8.6	---
Median LOS	7.0	7.0	9.0	7.0	---

\* Rates are per 100,000 population and are age-adjusted to the 2000 US Standard population.

Note: The “---” is used for rates calculated on numbers less than ten. Caution should be used when comparing inpatient hospital discharge data to other data sources, since it is occurrence-based data. Please see Technical Notes for more information.

**Table 286. Larynx Cancer Mortality by Age Group and County/Region of Residence, Nevada Residents, 1996-2000**

Category	County/Region of Residence			
	Nevada Total	Clark	Washoe	All Other Counties
<b>Total</b>				
<b>Mortality</b>	136	91	18	27
<b>Rate*</b>	1.5	1.4	1.1	2.0
<b>95% C.I.</b>	(1.2-1.7)	(1.1-1.7)	(0.6-1.6)	(1.2-2.7)
<b>Age Group</b>				
<1	0	0	0	0
Rate*	---	---	---	---
95% C.I.	---	---	---	---
1-4	0	0	0	0
Rate*	---	---	---	---
95% C.I.	---	---	---	---
5-14	0	0	0	0
Rate*	---	---	---	---
95% C.I.	---	---	---	---
15-24	0	0	0	0
Rate*	---	---	---	---
95% C.I.	---	---	---	---
25-34	0	0	0	0
Rate*	---	---	---	---
95% C.I.	---	---	---	---
35-44	1	1	0	0
Rate*	---	---	---	---
95% C.I.	---	---	---	---
45-54	12	9	1	2
Rate*	1.0	---	---	---
95% C.I.	(0.4-1.6)	---	---	---
55-64	33	26	2	5
Rate*	3.8	4.5	---	---
95% C.I.	(2.5-5.1)	(2.8-6.2)	---	---
65-74	54	33	7	14
Rate*	8.7	8.0	---	13.4
95% C.I.	(6.4-11.0)	(5.2-10.7)	---	(6.4-20.4)
75-84	27	19	4	4
Rate*	8.2	8.8	---	---
95% C.I.	(5.1-11.3)	(4.8-12.7)	---	---
85+	9	3	4	2
Rate*	---	---	---	---
95% C.I.	---	---	---	---
Unknown	0	0	0	0

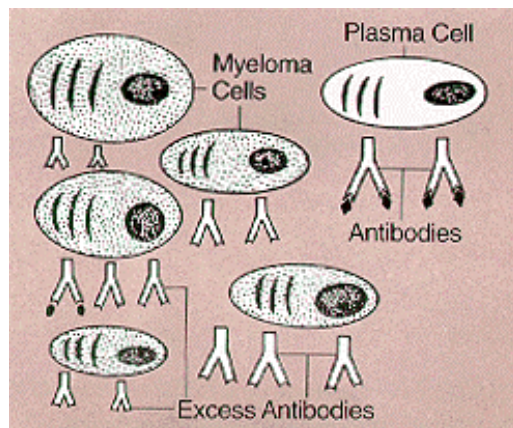
\* Rates are per 100,000 age-specific population.

Note: The "—" is used for rates calculated on numbers less than ten.

## MULTIPLE MYELOMA

### GENERAL PROFILE<sup>4</sup>

Figure 176. Picture of Myeloma Cells<sup>4</sup>



**General Anatomy:** Multiple Myeloma affects certain white blood cells called plasma cells that are part of the body's immune system. Plasma cells begin their development in the bone marrow and help the immune system fight infection and disease by producing antibodies. When cancer involves plasma cells, the body keeps producing more and more of these cells. The unneeded plasma cells -- all abnormal and all exactly alike -- are called myeloma cells. Myeloma cells tend to collect in the bone marrow and in the hard, outer part of bones. Sometimes they collect in only one bone and form a single mass, or tumor, called a plasmacytoma. In most cases, however, the myeloma cells collect in many bones, often forming many tumors and causing other problems. When this happens, the disease is called multiple myeloma.

**Risk Factors:** While the cause is unknown most multiple myeloma patients are between 50 and 70 years of age and affects Blacks, as a racial/ethnic group, more often than whites and men more often than women. Those with a family history of multiple myeloma and those exposed to certain chemicals and radiation seem to have a slightly higher increase in the risk of developing this type of cancer. In most cases, people who develop multiple myeloma have no clear risk factors. The disease may be the result of several factors (known and/or unknown) acting together.

**Signs and Symptoms:** Symptoms of multiple myeloma depend on how advanced the disease is. In the earliest stage of the disease, there may be no symptoms. When symptoms do occur, patients commonly have: bone pain in the back or ribs, broken bones, weakness, fatigue, weight loss, or repeated infections. When the disease is advanced, symptoms may include nausea, vomiting, constipation, problems with urination, and weakness or numbness in the legs.

**Diagnosing the Cancer:** X-rays, blood and urine tests (high levels of antibody proteins), bone marrow aspiration and/or bone marrow biopsy.

**Treatment:** chemotherapy, radiation therapy, and secondary surgical procedures to help the individual recover from these types of therapy include: bone marrow transplantation, peripheral stem cell support, and treatment with colony-stimulating factors.

**Table 287. Multiple Myeloma Cases by Age Group and County/Region of Residence at Diagnosis, Nevada Residents (1996-2000) and SEER-11 (1995-1999)**

Category	County/Region of Residence					SEER 11 (1995-1999)
	Nevada Total	Clark	Washoe	All Other Counties	Unknown	
<b>Total</b>						
<b>Cases</b>	337	198	87	52	0	9,106
<b>Rate*</b>	3.6	3.1	5.3	3.8	---	4.9
<b>95% C.I.</b>	(3.2-4.0)	(2.7-3.6)	(4.2-6.4)	(2.8-4.8)	---	(4.8-5.0)
<b>Age Group</b>						
<1	0	0	0	0	0	---
Rate*	---	---	---	---	---	---
95% C.I.	---	---	---	---	---	---
1-4	0	0	0	0	0	---
Rate*	---	---	---	---	---	---
95% C.I.	---	---	---	---	---	---
5-14	0	0	0	0	0	---
Rate*	---	---	---	---	---	---
95% C.I.	---	---	---	---	---	---
15-24	0	0	0	0	0	6
Rate*	---	---	---	---	---	---
95% C.I.	---	---	---	---	---	---
25-34	0	0	0	0	0	51
Rate*	---	---	---	---	---	0.2
95% C.I.	---	---	---	---	---	(0.1-0.2)
35-44	13	9	2	2	0	311
Rate*	0.9	---	---	---	---	1.0
95% C.I.	(0.4-1.3)	---	---	---	---	(0.9-1.1)
45-54	39	23	9	7	0	998
Rate*	3.2	2.9	---	---	---	4.4
95% C.I.	(2.2-4.2)	(1.7-4.1)	---	---	---	(4.1-4.6)
55-64	77	46	16	15	0	1,638
Rate*	8.9	7.9	11.3	10.9	---	11.7
95% C.I.	(6.9-10.9)	(5.6-10.2)	(5.8-16.9)	(5.4-16.4)	---	(11.1-12.3)
65-74	108	59	31	18	0	2,683
Rate*	17.4	14.2	30.7	17.2	---	23.3
95% C.I.	(14.1-20.7)	(10.6-17.9)	(19.9-41.6)	(9.3-25.2)	---	(22.4-24.1)
75-84	79	48	22	9	0	2,602
Rate*	24.1	22.2	40.0	---	---	35.8
95% C.I.	(18.8-29.4)	(15.9-28.5)	(23.3-56.7)	---	---	(34.4-37.2)
85+	20	12	7	1	0	817
Rate*	28.4	28.0	---	---	---	32.9
95% C.I.	(15.9-40.8)	(12.2-43.9)	---	---	---	(30.7-35.2)
Unknown	1	1	0	0	0	0

\* Rates are per 100,000 age-specific population.

Note: The “---“ is used for rates calculated on numbers less than ten and SEER numbers less than five. See Technical Notes for more information.

**Table 288. Multiple Myeloma Inpatient Discharges by Gender, Charges, Length of Stay, and County/Region of Residence, Nevada Residents, 1996-2000**

Category	County/Region of Residence				
	Nevada Total	Clark	Washoe	All Other Counties	Unknown
<b>Total</b>					
Discharges	320	200	84	36	0
Rate*	3.7	3.5	5.7	2.5	---
95% C.I.	(3.3-4.1)	(3.0-4.0)	(4.5-7.1)	(1.7-3.5)	---
<b>Gender</b>					
Male	189	115	51	23	0
Rate*	4.6	4.2	7.7	3.2	---
95% C.I.	(3.9-5.4)	(3.4-5.2)	(5.6-10.6)	(2.0-5.1)	---
Female	131	85	33	13	0
Rate*	2.9	2.9	4.2	1.8	---
95% C.I.	(2.4-3.5)	(2.3-3.6)	(2.9-6.0)	(0.9-3.1)	---
Other/Unknown	0	0	0	0	0
<b>Inpatient Discharge Charges (\$)</b>					
Total Charges	\$10,815,334	\$7,298,287	\$2,659,695	\$857,352	---
Average Charges	\$33,798	\$36,491	\$31,663	\$23,815	---
Median Charges	\$21,511	\$22,806	\$18,735	\$13,518	---
<b>Discharge Length of Stay (LOS) (Days)</b>					
Total LOS	2,970	1,879	828	263	---
Average LOS	9.3	9.4	9.9	7.3	---
Median LOS	7.0	7.0	7.0	7.0	---

\* Rates are per 100,000 population and are age-adjusted to the 2000 US Standard population.

Note: The "---" is used for rates calculated on numbers less than ten. Caution should be used when comparing inpatient hospital discharge data to other data sources, since it is occurrence-based data. Please see Technical Notes for more information.

**Table 289. Multiple Myeloma Mortality by Age Group and County/Region of Residence, Nevada Residents, 1996-2000**

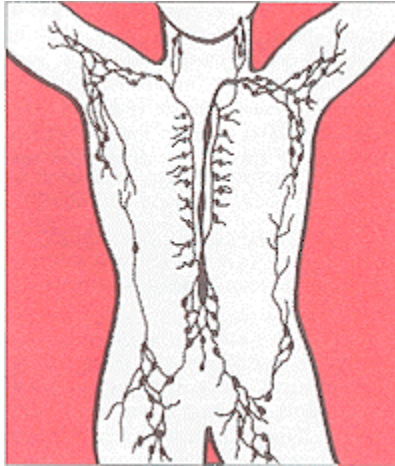
Category	County/Region of Residence			
	Nevada Total	Clark	Washoe	All Other Counties
<b>Total</b>				
<b>Mortality</b>	229	147	54	28
<b>Rate*</b>	2.5	2.3	3.3	2.0
<b>95% C.I.</b>	(2.1-2.8)	(2.0-2.7)	(2.4-4.2)	(1.3-2.8)
<b>Age Group</b>				
<1	0	0	0	0
Rate*	---	---	---	---
95% C.I.	---	---	---	---
1-4	0	0	0	0
Rate*	---	---	---	---
95% C.I.	---	---	---	---
5-14	0	0	0	0
Rate*	---	---	---	---
95% C.I.	---	---	---	---
15-24	0	0	0	0
Rate*	---	---	---	---
95% C.I.	---	---	---	---
25-34	0	0	0	0
Rate*	---	---	---	---
95% C.I.	---	---	---	---
35-44	2	2	0	0
Rate*	---	---	---	---
95% C.I.	---	---	---	---
45-54	19	13	4	2
Rate*	1.6	1.6	---	---
95% C.I.	(0.9-2.3)	(0.7-2.5)	---	---
55-64	48	31	11	6
Rate*	5.6	5.3	7.8	---
95% C.I.	(4.0-7.2)	(3.5-7.2)	(3.2-12.4)	---
65-74	77	46	20	11
Rate*	12.4	11.1	19.8	10.5
95% C.I.	(9.6-15.2)	(7.9-14.3)	(11.1-28.5)	(4.3-16.7)
75-84	69	46	14	9
Rate*	21.1	21.3	25.4	---
95% C.I.	(16.1-26.0)	(15.1-27.4)	(12.1-38.8)	---
85+	14	9	5	0
Rate*	19.9	---	---	---
95% C.I.	(9.5-30.3)	---	---	---
Unknown	0	0	0	0

\* Rates are per 100,000 age-specific population.  
 Note: The “---” is used for rates calculated on numbers less than ten.

## HODGKIN'S LYMPHOMA

### GENERAL PROFILE<sup>4</sup>

**Figure 177. Anatomy of the Lymphatic System<sup>4</sup>**



**General Anatomy:** Lymphoma is a general term for cancers that develop in the lymphatic system. The lymphatic system is part of the body's immune system that helps the body fight disease and infection and includes a network of thin tubes (lymphatic vessels) that branch, like blood vessels, into tissues throughout the body. These vessels carry lymph, a colorless, watery fluid that contains infection-fighting cells called lymphocytes. Along this network of vessels are small organs called lymph nodes that are found in the underarms, groin, neck, chest, and abdomen. Other parts of the lymphatic system are the spleen, thymus, tonsils, and bone marrow. Lymphatic tissue is also found in other parts of the body, including the stomach, intestines, and skin.

Hodgkin's disease, an uncommon lymphoma, accounts for less than 1 percent of all cases of cancer in the United States. This type of cancer tends to spread in a fairly orderly way from one group of lymph nodes to the next group. For example, Hodgkin's disease that arises in the lymph nodes in the neck spreads first to the nodes above the collarbones, and then to the lymph nodes under the arms and within the chest. Eventually, it can spread to almost any other part of the body.

**Risk Factors:** Common risk factors that are believed to be associated with the development of Hodgkin's Lymphoma are: age (between 15 and 34 and over 55 years of age), being male, family History, and certain viruses (Epstein-Barr virus).

**Signs and Symptoms:** A painless swelling in the lymph nodes in the neck, underarm, or groin, unexplained recurrent fevers, night sweats, unexplained weight loss, and itchy skin are some common symptoms that can be associated with Hodgkin's Lymphoma.

**Diagnosing the Cancer:** X-rays, computed tomography (CAT) scan, and magnetic resonance imaging (MRI), and biopsy (Reed-Sternberg cells in lymph node tissue).

**Treatment:** Radiation therapy and chemotherapy are the most common treatments, but others include: bone marrow transplantation, peripheral stem cell transplantation, and biological therapies are being studied in clinical trials.



**Table 290. Hodgkin’s Lymphoma Cases by Age Group and County/Region of Residence at Diagnosis, Nevada Residents (1996-2000) and SEER-11 (1995-1999)**

Category	County/Region of Residence					SEER 11 (1995-1999)
	Nevada Total	Clark	Washoe	All Other Counties	Unknown	
<b>Total</b>						
<b>Cases</b>	187	122	35	30	0	5,019
<b>Rate*</b>	2.0	1.9	2.1	2.2	---	2.7
<b>95% C.I.</b>	(1.7-2.3)	(1.6-2.3)	(1.4-2.8)	(1.4-3.0)	---	(2.6-2.8)
<b>Age Group</b>						
<1	0	0	0	0	0	---
Rate*	---	---	---	---	---	---
95% C.I.	---	---	---	---	---	---
1-4	2	0	1	1	0	11
Rate*	---	---	---	---	---	0.1
95% C.I.	---	---	---	---	---	(0.0-0.2)
5-14	5	4	0	1	0	211
Rate*	---	---	---	---	---	0.8
95% C.I.	---	---	---	---	---	(0.7-0.9)
15-24	24	16	4	4	0	927
Rate*	1.9	1.8	---	---	---	3.6
95% C.I.	(1.1-2.6)	(0.9-2.7)	---	---	---	(3.4-3.8)
25-34	43	30	10	3	0	1,228
Rate*	3.0	2.9	4.0	---	---	4.2
95% C.I.	(2.1-3.9)	(1.9-4.0)	(1.5-6.4)	---	---	(4.0-4.4)
35-44	33	24	4	5	0	889
Rate*	2.2	2.4	---	---	---	2.8
95% C.I.	(1.5-3.0)	(1.5-3.4)	---	---	---	(2.7-3.0)
45-54	31	19	8	4	0	569
Rate*	2.6	2.4	---	---	---	2.5
95% C.I.	(1.7-3.5)	(1.3-3.5)	---	---	---	(2.3-2.7)
55-64	18	11	3	4	0	434
Rate*	2.1	1.9	---	---	---	3.1
95% C.I.	(1.1-3.1)	(0.8-3.0)	---	---	---	(2.8-3.4)
65-74	23	12	5	6	0	376
Rate*	3.7	2.9	---	---	---	3.3
95% C.I.	(2.2-5.2)	(1.3-4.5)	---	---	---	(2.9-3.6)
75-84	5	5	0	0	0	295
Rate*	---	---	---	---	---	4.1
95% C.I.	---	---	---	---	---	(3.6-4.5)
85+	3	1	0	2	0	77
Rate*	---	---	---	---	---	3.1
95% C.I.	---	---	---	---	---	(2.4-3.8)
Unknown	0	0	0	0	0	0

\* Rates are per 100,000 age-specific population.

Note: The “---” is used for rates calculated on numbers less than ten and SEER numbers less than five. See Technical Notes for more information.

**Table 291. Hodgkin's Lymphoma Inpatient Discharges by Gender, Charges, Length of Stay, and County/Region of Residence, Nevada Residents, 1996-2000**

Category	County/Region of Residence				
	Nevada Total	Clark	Washoe	All Other Counties	Unknown
<b>Total</b>					
Discharges	116	89	18	9	0
Rate*	1.2	1.4	1.1	---	---
95% C.I.	(1.0-1.5)	(1.1-1.7)	(0.7-1.8)	---	---
<b>Gender</b>					
Male	61	51	7	3	0
Rate*	1.3	1.5	---	---	---
95% C.I.	(1.0-1.7)	(1.2-2.2)	---	---	---
Female	55	38	11	6	0
Rate*	1.2	1.2	1.4	---	---
95% C.I.	(0.9-1.6)	(0.9-1.7)	(0.7-2.5)	---	---
Other/Unknown	0	0	0	0	0
<b>Inpatient Discharge Charges (\$)</b>					
Total Charges	\$4,306,209	\$3,302,741	\$716,230	\$287,238	---
Average Charges	\$37,122	\$37,109	\$39,791	\$31,915	---
Median Charges	\$18,413	\$18,383	\$20,569	\$16,777	---
<b>Discharge Length of Stay (LOS) (Days)</b>					
Total LOS	1,031	834	140	57	---
Average LOS	8.9	9.4	7.8	6.3	---
Median LOS	5.0	5.0	5.5	5.0	---

\* Rates are per 100,000 population and are age-adjusted to the 2000 US Standard population.

Note: The "---" is used for rates calculated on numbers less than ten. Caution should be used when comparing inpatient hospital discharge data to other data sources, since it is occurrence-based data. Please see Technical Notes for more information.

**Table 292. Hodgkin’s Lymphoma Mortality by Age Group and County/Region of Residence, Nevada Residents, 1996-2000**

Category	County/Region of Residence			
	Nevada Total	Clark	Washoe	All Other Counties
<b>Total</b>				
<b>Mortality</b>	39	27	6	6
<b>Rate*</b>	0.4	0.4	0.4	0.4
<b>95% C.I.</b>	(0.3-0.6)	(0.3-0.6)	(0.1-0.7)	(0.1-0.8)
<b>Age Group</b>				
<1	0	0	0	0
Rate*	---	---	---	---
95% C.I.	---	---	---	---
1-4	0	0	0	0
Rate*	---	---	---	---
95% C.I.	---	---	---	---
5-14	0	0	0	0
Rate*	---	---	---	---
95% C.I.	---	---	---	---
15-24	2	2	0	0
Rate*	---	---	---	---
95% C.I.	---	---	---	---
25-34	4	4	0	0
Rate*	---	---	---	---
95% C.I.	---	---	---	---
35-44	4	3	1	0
Rate*	---	---	---	---
95% C.I.	---	---	---	---
45-54	8	4	3	1
Rate*	---	---	---	---
95% C.I.	---	---	---	---
55-64	3	2	0	1
Rate*	---	---	---	---
95% C.I.	---	---	---	---
65-74	13	8	2	3
Rate*	2.1	---	---	---
95% C.I.	(1.0-3.2)	---	---	---
75-84	4	4	0	0
Rate*	---	---	---	---
95% C.I.	---	---	---	---
85+	1	0	0	1
Rate*	---	---	---	---
95% C.I.	---	---	---	---
Unknown	0	0	0	0

\* Rates are per 100,000 age-specific population.  
 Note: The “---” is used for rates calculated on numbers less than ten.

## ALL OTHER SITES

Table 293. Cancer Cases for All Other Sites by Age Group and County/Region of Residence at Diagnosis, Nevada Residents (1996-2000) and SEER-11 (1995-1999)

Category	County/Region of Residence					SEER 11 (1995-1999)
	Nevada Total	Clark	Washoe	All Other Counties	Unknown	
<b>Total</b>						
<b>Cases</b>	3,145	1,798	790	556	1	57,829
<b>Rate*</b>	33.8	28.6	48.2	40.6	---	31.2
<b>95% C.I.</b>	(32.6-35.0)	(27.2-29.9)	(44.9-51.6)	(37.2-44.0)	---	(31.0-31.5)
<b>Age Group</b>						
<1	16	10	2	4	0	308
Rate*	11.5	10.2	---	---	---	11.1
95% C.I.	(5.8-17.1)	(3.9-16.5)	---	---	---	(9.9-12.4)
1-4	14	11	1	2	0	474
Rate*	2.6	2.9	---	---	---	4.3
95% C.I.	(1.2-3.9)	(1.2-4.6)	---	---	---	(3.9-4.6)
5-14	26	17	5	4	0	625
Rate*	2.0	1.9	---	---	---	2.3
95% C.I.	(1.2-2.7)	(1.0-2.8)	---	---	---	(2.2-2.5)
15-24	72	40	15	16	1	1,745
Rate*	5.6	4.6	6.6	8.8	---	6.8
95% C.I.	(4.3-6.9)	(3.2-6.0)	(3.3-10.0)	(4.5-13.2)	---	(6.4-7.1)
25-34	143	96	34	13	0	4,286
Rate*	10.0	9.4	13.5	8.2	---	14.6
95% C.I.	(8.4-11.6)	(7.5-11.3)	(8.9-18.0)	(3.7-12.6)	---	(14.2-15.1)
35-44	218	140	52	26	0	5,739
Rate*	14.6	14.1	18.7	11.5	---	18.4
95% C.I.	(12.7-16.5)	(11.8-16.5)	(13.6-23.8)	(7.1-15.9)	---	(17.9-18.8)
45-54	379	223	105	51	0	6,286
Rate*	31.3	28.2	46.8	26.5	---	27.5
95% C.I.	(28.2-34.5)	(24.5-31.8)	(37.8-55.7)	(19.2-33.8)	---	(26.8-28.1)
55-64	566	326	133	107	0	7,717
Rate*	65.7	56.1	94.0	77.6	---	55.1
95% C.I.	(60.3-71.2)	(50.0-62.2)	(78.0-110.0)	(62.9-92.3)	---	(53.9-56.3)
65-74	801	437	210	154	0	12,290
Rate*	129.2	105.4	208.2	147.4	---	106.5
95% C.I.	(120.3-138.2)	(95.5-115.3)	(180.1-236.4)	(124.1-170.7)	---	(104.6-108.4)
75-84	704	376	186	142	0	12,543
Rate*	214.8	173.9	338.0	251.4	---	172.6
95% C.I.	(198.9-230.7)	(156.3-191.4)	(289.4-386.6)	(210.1-292.8)	---	(169.5-175.6)
85+	206	122	47	37	0	5,816
Rate*	292.4	284.8	326.0	280.4	---	234.5
95% C.I.	(252.5-332.3)	(234.2-335.3)	(232.8-419.2)	(190.1-370.8)	---	(228.5-240.5)
Unknown	0	0	0	0	0	0

\* Rates are per 100,000 age-specific population.

Note: The "----" is used for rates calculated on numbers less than ten and SEER numbers less than five. See Technical Notes for more information.

**Table 294. Inpatient Discharges for All Other Sites by Gender, Charges, Length of Stay, and County/Region of Residence, Nevada Residents, 1996-2000**

Category	County/Region of Residence				
	Nevada Total	Clark	Washoe	All Other Counties	Unknown
<b>Total</b>					
Discharges	7,626	5,382	1,290	951	3
Rate*	88.4	93.4	88.8	67.6	---
95% C.I.	(86.4-90.5)	(90.8-96.0)	(84.0-93.9)	(63.3-72.2)	---
<b>Gender</b>					
Male	3,532	2,469	585	476	2
Rate*	86.8	90.2	88.3	70.6	---
95% C.I.	(83.7-89.9)	(86.4-94.1)	(80.9-96.5)	(64.1-77.8)	---
Female	4,094	2,913	705	475	1
Rate*	91.5	97.7	91.8	65.7	---
95% C.I.	(88.7-94.4)	(94.2-101.4)	(85.1-98.9)	(59.9-71.9)	---
Other/Unknown	0	0	0	0	0
<b>Inpatient Discharge Charges (\$)</b>					
Total Charges	\$204,669,570	\$152,850,142	\$31,503,531	\$20,190,179	\$125,718
Average Charges	\$26,838	\$28,400	\$24,421	\$21,230	\$41,906
Median Charges	\$18,143	\$19,205	\$16,959	\$13,765	\$14,655
<b>Discharge Length of Stay (LOS) (Days)</b>					
Total LOS	56,235	40,211	9,707	6,290	27
Average LOS	7.4	7.5	7.5	6.6	9.0
Median LOS	5.0	5.0	6.0	5.0	5.0

\* Rates are per 100,000 population and are age-adjusted to the 2000 US Standard population.

Note: The "---" is used for rates calculated on numbers less than ten. Caution should be used when comparing inpatient hospital discharge data to other data sources, since it is occurrence-based data. Please see Technical Notes for more information.

**Table 295. All Other Sites Cancer Mortality by Age Group and County/Region of Residence, Nevada Residents, 1996-2000**

Category	County/Region of Residence			
	Nevada Total	Clark	Washoe	All Other Counties
<b>Total</b>				
<b>Mortality</b>	2,015	1,255	382	378
<b>Rate*</b>	21.7	19.9	23.3	27.6
<b>95% C.I.</b>	(20.7-22.6)	(18.8-21.0)	(21.0-25.7)	(24.8-30.4)
<b>Age Group</b>				
<1	2	2	0	0
Rate*	---	---	---	---
95% C.I.	---	---	---	---
1-4	3	2	0	1
Rate*	---	---	---	---
95% C.I.	---	---	---	---
5-14	9	5	3	1
Rate*	---	---	---	---
95% C.I.	---	---	---	---
15-24	9	4	1	4
Rate*	---	---	---	---
95% C.I.	---	---	---	---
25-34	20	16	2	2
Rate*	1.4	1.6	---	---
95% C.I.	(0.8-2.0)	(0.8-2.3)	---	---
35-44	65	43	10	12
Rate*	4.4	4.3	3.6	5.3
95% C.I.	(3.3-5.4)	(3.0-5.6)	(1.4-5.8)	(2.3-8.3)
45-54	175	115	26	34
Rate*	14.5	14.5	11.6	17.7
95% C.I.	(12.3-16.6)	(11.9-17.2)	(7.1-16.0)	(11.7-23.6)
55-64	366	239	55	72
Rate*	42.5	41.1	38.9	52.2
95% C.I.	(38.2-46.9)	(35.9-46.3)	(28.6-49.2)	(40.1-64.2)
65-74	615	392	119	104
Rate*	99.2	94.6	118.0	99.5
95% C.I.	(91.4-107.0)	(85.2-103.9)	(96.8-139.2)	(80.4-118.7)
75-84	529	315	121	93
Rate*	161.4	145.7	219.9	164.7
95% C.I.	(147.6-175.2)	(129.6-161.7)	(180.7-259.1)	(131.2-198.1)
85+	222	122	45	55
Rate*	315.1	284.8	312.2	416.9
95% C.I.	(273.7-356.6)	(234.2-335.3)	(221.0-403.4)	(306.7-527.0)
Unknown	0	0	0	0

\* Rates are per 100,000 age-specific population.

Note: The "—" is used for rates calculated on numbers less than ten.