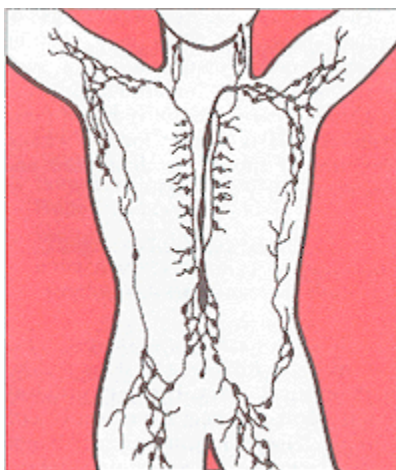


NON-HODGKIN'S LYMPHOMA

NON-HODGKIN'S LYMPHOMA

GENERAL PROFILE⁴

Figure 101. Anatomy of the Lymphatic System



General Anatomy: Lymphoma is a general term for cancers that develop in the lymphatic system. The lymphatic system is part of the body's immune system that helps the body fight disease and infection and includes a network of thin tubes (lymphatic vessels) that branch, like blood vessels, into tissues throughout the body. Lymphatic vessels carry lymph, a colorless, watery fluid that contains infection-fighting cells called lymphocytes. Along this network of vessels are small organs called lymph nodes that are found in the underarms, groin, neck, chest, and abdomen. Other parts of the lymphatic system are the spleen, thymus, tonsils, and bone marrow. Lymphatic tissue is also found in other parts of the body, including the stomach, intestines, and skin.

In Non-Hodgkin's Lymphoma, cells in the lymphatic system become abnormal. They divide and grow without any order or control, or old cells do not die as cells normally do. Non-Hodgkin's lymphoma can start almost anywhere in the body and may occur in a single lymph node, a group of lymph nodes, or in another organ. This type of cancer can spread to almost any part of the body, including the liver, bone marrow, and spleen.

Risk Factors: Age, male gender, weakened immune system, viruses (Human T-lymphotropic virus type I (HTLV-1) and Epstein-Barr virus), and environment (chemical exposure).

Signs and Symptoms: Unexplained fever, night sweats, constant fatigue, unexplained weight loss, itchy skin, and reddened patches on the skin.

Diagnosing the Cancer: X-rays, computed tomography (CAT) scan, magnetic resonance imaging (MRI), and lymphangiogram.

Treatment: Treatment options include: chemotherapy, radiation therapy, bone marrow transplantation (BMT), biological therapy, surgery, and clinical trials.

HIGHLIGHTS

- The ratio of the age-adjusted incidence rate, 17.7, to the age-adjusted mortality rate, 6.6 (per 100,000 – 2000 US Standard population), for Non-Hodgkin's Lymphoma in Nevada was 2.7 during the 2000 to 2004 period, which means that for every 269 Non-Hodgkin's Lymphoma cases there was 100 deaths due to Non-Hodgkin's Lymphoma in Nevada during this period.
- Nevadan females had a higher ratio (2.76) than males (2.58) when the incidence and mortality age-adjusted rates for Non-Hodgkin's Lymphoma were compared. This means that for every 100 deaths due to Non-Hodgkin's Lymphoma there was 276 female cases while only 258 cases for every male death during the 2000 to 2004 period.
- The median age at diagnosis of Non-Hodgkin's Lymphoma for Nevadans was 66 years of age from 2000 to 2004. The median age at time of death due to Non-Hodgkin's Lymphoma during this period was 73 years.

INCIDENCE

- There were 1,815 cases of Non-Hodgkin's Lymphoma in Nevada from 2000 to 2004. Nevada's higher incidence rate, 21.2 (19.9-22.7), for Non-Hodgkin's Lymphoma showed statistical significance when compared to the national rate, 19.34 (19.2), per 100,000 – 2000 US Standard population.
- Regional comparisons showed that Clark County's age-adjusted incidence rate, 18.2, was higher than the rate for Washoe County and All Other Counties who had rates of 17.6 and 15.5 (per 100,000 – 2000 US Standard population) from 2000 to 2004.
- Males had a statistically significant higher age-adjusted incidence rate, 21.2 (19.9-22.7), for Non-Hodgkin's Lymphoma than females from 2000 to 2004 who had a rate of 14.6 (13.6-15.7), (per 100,000 – 2000 US Standard population).
- Whites had the highest age-adjusted incidence rate, 18.7, for Non-Hodgkin's Lymphoma of all racial/ethnic groups and were followed by Blacks, Asians and Hispanics with rates of 13.5, 11.0, and 9.1 (per 100,000 – 2000 US Standard population), respectively, during this period.

INPATIENT HOSPITAL DISCHARGES

- Statistical regional comparisons indicate that Washoe County had the highest age-adjusted inpatient discharge rate for Non-Hodgkin's Lymphoma, 11.8 (10.2-13.6), and was followed by Clark County, 10.3 (9.6-11.1), and All Other Counties, 7.9 (6.5-9.4), (per 100,000 – 2000 US Standard population) from 2000 to 2004.

- Clark County had the highest median total charge (\$36,352) for Non-Hodgkin's Lymphoma inpatient hospital discharges during the 2000 to 2004 period and was followed by Washoe County (\$25,024) and All Other Counties (\$21,433).
- Total billed charges for Non-Hodgkin's Lymphoma inpatient hospital discharges in Nevada totaled 59.7 million dollars from 2000 to 2004. The overall average billed charge per day for a hospital inpatient discharge due to Non-Hodgkin's Lymphoma was approximately \$5,991 in Nevada during this period.

MORTALITY

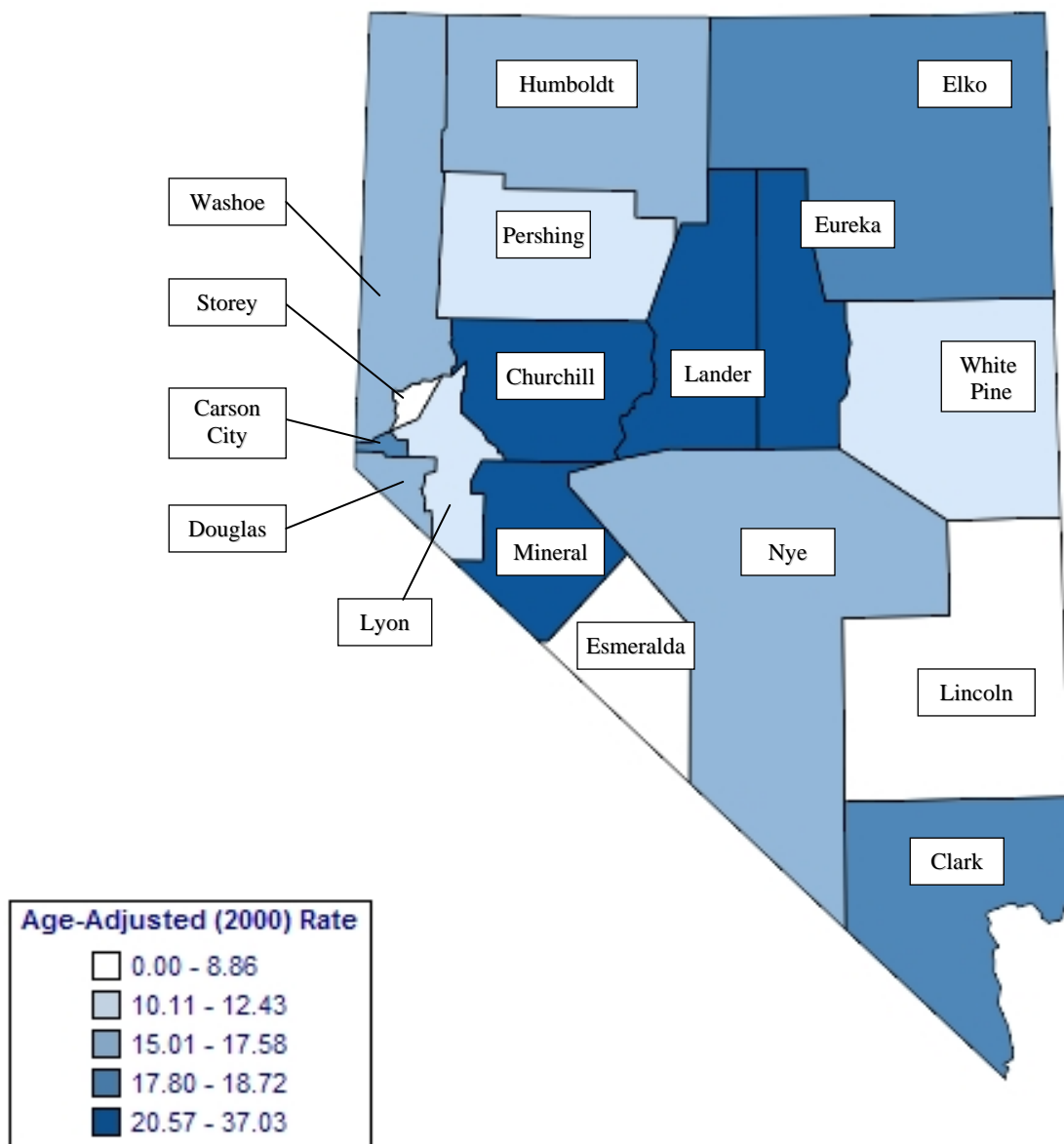
- There were 630 resident deaths due to Non-Hodgkin's Lymphoma from 2000 to 2004. Regional comparisons were fairly similar between Washoe County, All Other Counties, as a region, and Clark County with rates of 7.1, 7.1 and 6.3 (per 100,000 – 2000 US Standard population), respectively.
- While racial/ethnic comparisons showed that Whites had highest age-adjusted mortality rate (6.9) for Non-Hodgkin's Lymphoma, and were followed by Blacks, Hispanics, and Asians with rates of 5.6, 5.4 and 3.9 (per 100,000 – 2000 US Standard population), respectively; statistical analysis does not show any statistical significance between any of the racial/ethnic groups during the 2000 to 2004 period.

SURVIVAL RATE

- Females had a slightly higher one-year survival rate (78.8%) than males (78.4%) for Non-Hodgkin's Lymphoma in Nevada from 2000 to 2004. This difference increased at the five-year survival rate where females had a higher rate at 64.6% and males with a rate of 60.3% during this period.
- The Non-Hodgkin's Lymphoma survival rate varies greatly by the stage of the cancer at time of diagnosis. Those diagnosed at the localized stage had the highest one- and five-year survival rates with 85.6% and 71.2%, respectively. This was followed by those with regional and then distant diagnoses with rates of 84.4% and 72.8% for the one year period and 55.8% and 58.5% for the five year period.

INCIDENCE

Figure 102. Non-Hodgkin’s Lymphoma Age-Adjusted (2000) Incidence Rates, Nevada Residents, 2000-2004



Note: Rates are per 100,000 population and age-adjusted to 2000 US Standard population. Caution should be used when interpreting rates based upon small numbers. See Technical Notes for more information.

Figure 103. Non-Hodgkin’s Lymphoma Age-Adjusted Incidence Rates by County/Region of Residence, Nevada Residents, 2000-2004

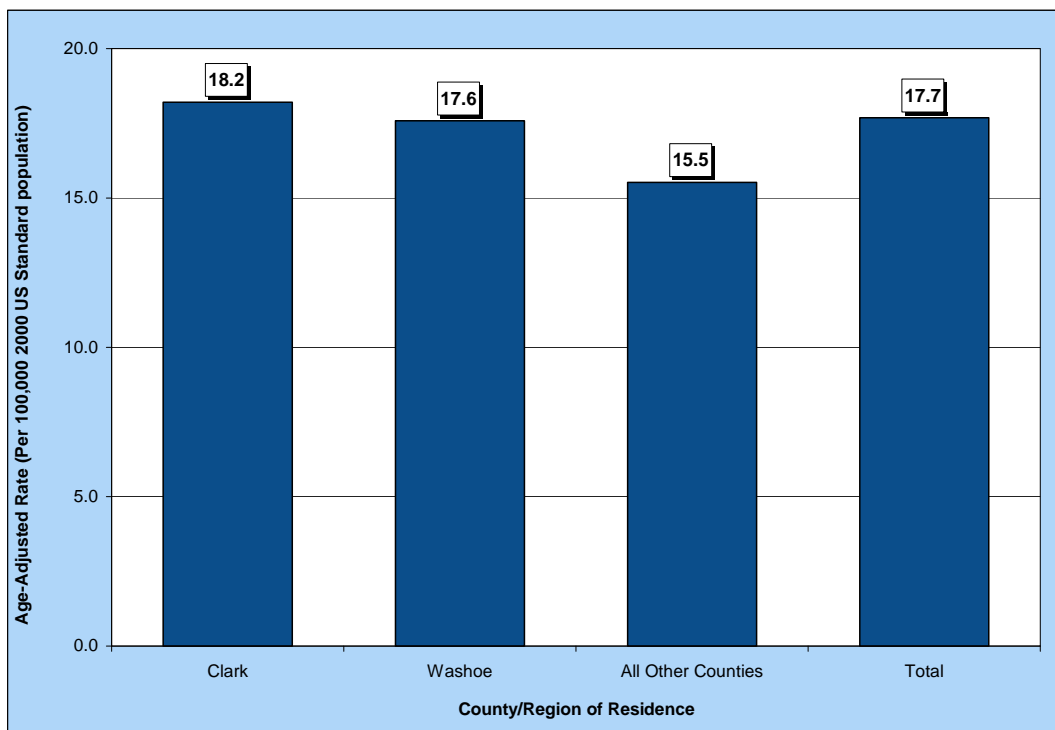


Figure 104. Non-Hodgkin’s Lymphoma Age-Adjusted Incidence Rates by Race/Ethnicity, Nevada Residents, 2000-2004

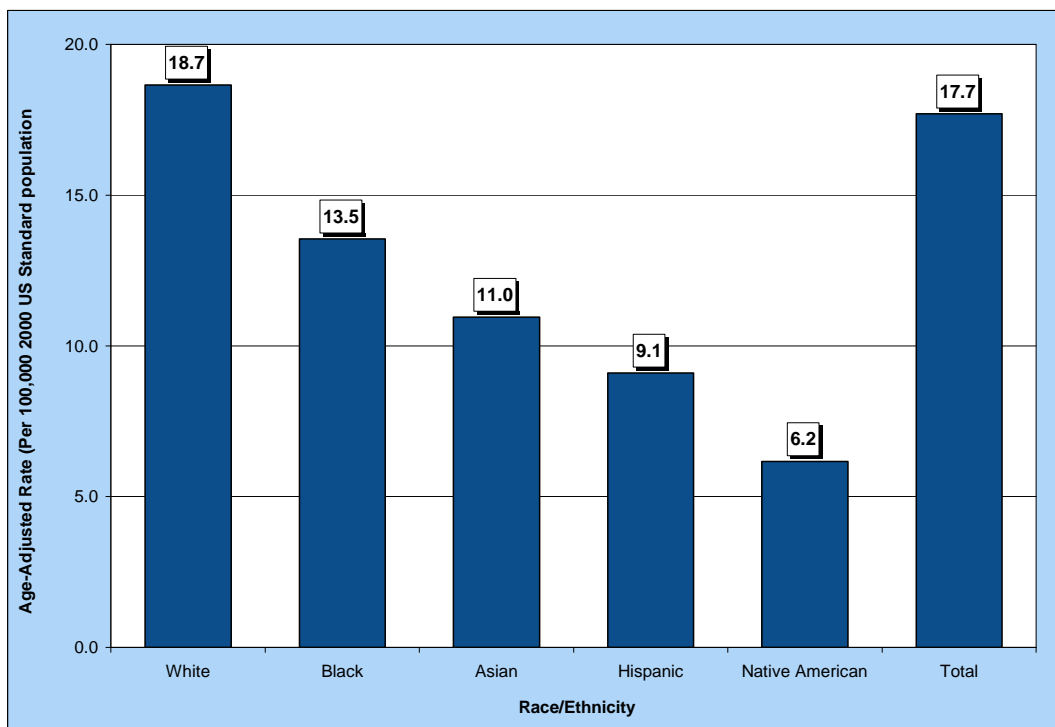


Table 150. Non-Hodgkin's Lymphoma Cases by Gender, Race/Ethnicity and County/Region of Residence at Diagnosis, Nevada Residents (2000-2004) and SEER-17 (2000-2004)

Category	County/Region of Residence					SEER 17 (2000-2004)
	Nevada Total	Clark	Washoe	All Other Counties	Unknown	
Total						
Cases	1,815	1,274	293	247	1	69,044
Rate*	17.7	18.2	17.6	15.5	---	19.3
95% C.I.	(16.9-18.6)	(17.2-19.3)	(15.6-19.8)	(13.6-17.6)	---	(19.2-19.5)
Gender						
Male	1,035	728	174	132	1	36,882
Rate*	21.2	22.0	21.9	17.2	---	23.2
95% C.I.	(19.9-22.7)	(20.3-23.9)	(18.6-25.8)	(14.3-20.6)	---	(23.0-23.5)
Female	780	546	119	115	0	32,162
Rate*	14.6	15.0	13.8	13.9	---	16.3
95% C.I.	(13.6-15.7)	(13.7-16.3)	(11.4-16.5)	(11.5-16.8)	---	(16.1-16.4)
Other/Unknown	0	0	0	0	0	0
Race/Ethnicity						
White	1,515	1,030	259	226	0	59,191
Rate*	18.7	19.5	18.3	15.8	---	20.2
95% C.I.	(17.7-19.7)	(18.3-20.8)	(16.1-20.7)	(13.8-18.1)	---	(20.0-20.3)
Black	75	70	3	1	1	4,864
Rate*	13.5	13.5	---	---	---	14.6
95% C.I.	(10.5-17.5)	(10.4-17.8)	---	---	---	(14.2-15.0)
Native American	6	3	1	2	0	252
Rate*	---	---	---	---	---	7.7
95% C.I.	---	---	---	---	---	(6.7-6.7)
Asian	50	36	11	3	0	3,784
Rate*	11.0	9.4	18.7	---	---	13.2
95% C.I.	(7.5-16.3)	(5.8-15.7)	(7.4-45.4)	---	---	(12.8-13.6)
Hispanic	94	73	11	10	0	6,648
Rate*	9.1	9.6	5.6	10.3	---	16.5
95% C.I.	(7.0-12.0)	(7.1-13.3)	(2.3-12.0)	(4.4-22.3)	---	(16.1-16.9)
Other/Unknown	75	62	8	5	0	953

* Rates are per 100,000 population and are age-adjusted to the 2000 US Standard population.

Note: The "----" is used for rates calculated on numbers less than ten and SEER numbers less than five. Caution should be used when comparing rates for racial/ethnic groups to the national (SEER) rates. See Technical Notes for more information.

Table 151. Non-Hodgkin's Lymphoma Cases by Age Group and County/Region of Residence at Diagnosis, Nevada Residents (2000-2004) and SEER-17 (2000-2004)

Category	County/Region of Residence					
	Nevada Total	Clark	Washoe	All Other Counties	Unknown	SEER 17 (2000-2004)
Total						
Cases	1,815	1,274	293	247	1	69,044
Rate*	17.7	18.2	17.6	15.5	---	19.3
95% C.I.	(16.9-18.6)	(17.2-19.3)	(15.6-19.8)	(13.6-17.6)	---	(19.2-19.5)
Age Group						
<1	1	1	0	0	0	8
Rate*	---	---	---	---	---	0.2
95% C.I.	---	---	---	---	---	(0.1-0.3)
1-4	3	2	1	0	0	121
Rate*	---	---	---	---	---	0.6
95% C.I.	---	---	---	---	---	(0.5-0.7)
5-14	16	10	4	2	0	584
Rate*	1.0	0.9	---	---	---	1.1
95% C.I.	(0.53-1.54)	(0.35-1.48)	---	---	---	(1.0-1.1)
15-24	23	18	4	1	0	1,118
Rate*	1.5	1.6	---	---	---	2.1
95% C.I.	(0.87-2.07)	(0.88-2.40)	---	---	---	(2.0-2.2)
25-34	61	43	11	7	0	2,266
Rate*	3.8	3.6	4.2	---	---	4.2
95% C.I.	(2.82-4.71)	(2.51-4.66)	(1.73-6.75)	---	---	(4.0-4.4)
35-44	131	93	25	13	0	5,326
Rate*	7.7	7.7	8.8	6.0	---	8.9
95% C.I.	(6.37-9.00)	(6.17-9.31)	(5.33-12.20)	(2.72-9.19)	---	(8.7-9.2)
45-54	222	154	38	30	0	9,736
Rate*	14.9	15.3	14.5	13.4	---	18.8
95% C.I.	(12.91-16.82)	(12.87-17.70)	(9.89-19.10)	(8.62-18.23)	---	(18.4-19.2)
55-64	384	263	73	48	0	12,486
Rate*	35.2	35.0	42.0	28.8	---	37.8
95% C.I.	(31.66-38.69)	(30.76-39.22)	(32.39-51.67)	(20.68-37.00)	---	(37.1-38.5)
65-74	463	329	64	70	0	15,571
Rate*	64.6	66.5	60.1	60.6	---	71.4
95% C.I.	(58.71-70.47)	(59.32-73.69)	(45.35-74.79)	(46.38-74.76)	---	(70.3-72.5)
75-84	398	281	55	61	1	16,193
Rate*	96.8	100.4	86.9	89.9	---	105.3
95% C.I.	(87.32-106.35)	(88.68-112.17)	(63.90-109.81)	(67.33-112.45)	---	(103.7-106.9)
85+	113	80	18	15	0	5,635
Rate*	118.9	131.4	103.1	90.0	---	102.0
95% C.I.	(97.00-140.86)	(102.61-160.21)	(55.47-150.74)	(44.43-135.46)	---	(99.3-104.7)
Unknown	0	0	0	0	0	0

* Rates are per 100,000 age-specific population.

Note: The "---" is used for rates calculated on numbers less than ten and SEER numbers less than five. See Technical Notes for more information.

Table 152. Non-Hodgkin's Lymphoma Cases by County of Residence at Diagnosis, Nevada Residents, 2000-2004

County of Residence at Diagnosis	2000-2004 Incidence				
	Cases	Rate*		Age-Adjusted Rate**	
		Rate	95% C.I.	Rate	95% C.I.
Carson City	54	21.1	(15.5-26.8)	18.7	(14.0-24.7)
Churchill	25	20.0	(12.2-27.9)	20.6	(13.3-30.9)
Clark	1,274	16.6	(15.6-17.5)	18.2	(17.2-19.3)
Douglas	44	19.9	(14.0-25.7)	15.0	(10.8-20.7)
Elko	24	10.5	(6.3-14.7)	17.8	(10.8-28.4)
Esmeralda	0	---	---	---	---
Eureka	3	---	---	---	---
Humboldt	9	---	---	---	---
Lander	4	---	---	---	---
Lincoln	2	---	---	---	---
Lyon	28	14.3	(9.0-19.6)	12.4	(8.2-18.3)
Mineral	7	---	---	---	---
Nye	38	21.6	(14.7-28.4)	15.6	(10.8-22.5)
Pershing	3	---	---	---	---
Storey	0	---	---	---	---
Washoe	293	16.3	(14.5-18.2)	17.6	(15.6-19.8)
White Pine	6	---	---	---	---
Unknown	1	---	---	---	---
Total	1,815	16.6	(15.8-17.4)	17.7	(16.9-18.6)

Note: The "---" is used for rates calculated on numbers less than ten. *Rates are per 100,000 population. **Rates are per 100,000 population and are age-adjusted to the 2000 US Standard population.

Table 153. Non-Hodgkin's Lymphoma Cases by Race/Ethnicity and Gender, Nevada Residents, 2000-2004

Race/Ethnicity	Gender				
	Male	Female	Other/Unknown	Total	
White	Incidence	846	669	0	1,515
	Rate*	21.9	15.8	---	18.7
	95% C.I.	(20.3-23.5)	(14.7-17.1)	---	(17.7-19.7)
Black	Incidence	46	29	0	75
	Rate*	16.1	10.6	---	13.5
	95% C.I.	(11.6-22.0)	(6.9-15.7)	---	(10.5-17.5)
Native American	Incidence	3	3	0	6
	Rate*	---	---	---	---
	95% C.I.	---	---	---	---
Asian	Incidence	30	20	0	50
	Rate*	15.9	7.2	---	11.0
	95% C.I.	(9.4-27.4)	(3.9-14.0)	---	(7.5-16.3)
Hispanic	Incidence	57	37	0	94
	Rate*	13.0	6.2	---	9.1
	95% C.I.	(8.9-19.8)	(4.2-9.2)	---	(7.0-12.0)
Other/Unknown	53	22	0	75	
Total	Incidence	1,035	780	0	1,815
	Rate*	21.2	14.6	---	17.7
	95% C.I.	(19.9-22.7)	(13.6-15.7)	---	(16.9-18.6)

Note: The "---" is used for rates calculated on numbers less than ten. *Rates are per 100,000 population and are age-adjusted to the 2000 US Standard population.

Table 154. Non-Hodgkin's Lymphoma Cases by Age Group and Gender, Nevada Residents, 2000-2004

Age Group	Gender			
	Male	Female	Unknown	Total
<1	1	0	0	1
Rate*	---	---	---	---
95% C.I.	---	---	---	---
1-4	1	2	0	3
Rate*	---	---	---	---
95% C.I.	---	---	---	---
5-14	12	4	0	16
Rate*	1.50	---	---	1.03
95% C.I.	(0.65-2.35)	---	---	(0.53-1.54)
15-24	12	11	0	23
Rate*	1.48	1.46	---	1.47
95% C.I.	(0.64-2.32)	(0.60-2.33)	---	(0.87-2.07)
25-34	40	21	0	61
Rate*	4.74	2.71	---	3.77
95% C.I.	(3.27-6.21)	(1.55-3.87)	---	(2.82-4.71)
35-44	85	46	0	131
Rate*	9.60	5.61	---	7.68
95% C.I.	(7.56-11.64)	(3.99-7.23)	---	(6.37-9.00)
45-54	130	92	0	222
Rate*	17.18	12.49	---	14.87
95% C.I.	(14.22-20.13)	(9.94-15.05)	---	(12.91-16.82)
55-64	244	140	0	384
Rate*	45.34	25.29	---	35.18
95% C.I.	(39.65-51.02)	(21.10-29.48)	---	(31.66-38.69)
65-74	257	206	0	463
Rate*	72.74	56.67	---	64.59
95% C.I.	(63.85-81.63)	(48.93-64.41)	---	(58.71-70.47)
75-84	198	200	0	398
Rate*	106.64	88.76	---	96.84
95% C.I.	(91.79-121.50)	(76.46-101.06)	---	(87.32-106.35)
85+	55	58	0	113
Rate*	173.14	91.71	---	118.93
95% C.I.	(127.38-218.89)	(68.10-115.31)	---	(97.00-140.86)
Unknown	0	0	0	0
Total	1,035	780	0	1,815
Rate*	18.62	14.49	---	16.59
95% C.I.	(17.5-19.8)	(13.5-15.5)	---	(15.8-17.4)

* Rates are per 100,000 age-specific population.

Note: The "---" is used for rates calculated on numbers less than ten.

Table 155. Non-Hodgkin's Lymphoma Cases by Age Group and Stage, Nevada Residents, 2000-2004

Age Group		Stage					Total
		In situ	Localized	Regional	Distant	Unstaged	
<1	Number	---	0	0	0	1	1
	Percent	---	---	---	---	100.0%	100.0%
1-4	Number	---	1	0	1	1	3
	Percent	---	33.3%	---	33.3%	33.3%	100.0%
5-14	Number	---	2	2	5	7	16
	Percent	---	12.5%	12.5%	31.3%	43.8%	100.0%
15-24	Number	---	7	2	7	7	23
	Percent	---	30.4%	8.7%	30.4%	30.4%	100.0%
25-34	Number	---	16	11	12	22	61
	Percent	---	26.2%	18.0%	19.7%	36.1%	100.0%
35-44	Number	---	36	8	40	47	131
	Percent	---	27.5%	6.1%	30.5%	35.9%	100.0%
45-54	Number	---	53	21	65	83	222
	Percent	---	23.9%	9.5%	29.3%	37.4%	100.0%
55-64	Number	---	81	36	126	141	384
	Percent	---	21.1%	9.4%	32.8%	36.7%	100.0%
65-74	Number	---	99	30	139	195	463
	Percent	---	21.4%	6.5%	30.0%	42.1%	100.0%
75-84	Number	---	70	31	130	167	398
	Percent	---	17.6%	7.8%	32.7%	42.0%	100.0%
85+	Number	---	22	6	29	56	113
	Percent	---	19.5%	5.3%	25.7%	49.6%	100.0%
Unknown	Number	---	0	0	0	0	0
	Percent	---	---	---	---	---	---
Total	Number	---	387	147	554	727	1,815
	Percent	---	21.3%	8.1%	30.5%	40.1%	100.0%

Table 156. Non-Hodgkin's Lymphoma Cases by Stage and Race/Ethnicity, Nevada Residents, 2000-2004

Stage		Race/Ethnicity						Total
		White	Black	Native American	Asian	Hispanic	Other/Unknown	
In situ	Number	---	---	---	---	---	---	---
	Percent	---	---	---	---	---	---	---
Localized	Number	317	27	2	9	22	10	387
	Percent	20.9%	36.0%	33.3%	18.0%	23.4%	13.3%	21.3%
Regional	Number	126	5	0	3	8	5	147
	Percent	8.3%	6.7%	---	6.0%	8.5%	6.7%	8.1%
Distant	Number	464	20	3	18	29	20	554
	Percent	30.6%	26.7%	50.0%	36.0%	30.9%	26.7%	30.5%
Unstaged	Number	608	23	1	20	35	40	727
	Percent	40.1%	30.7%	16.7%	40.0%	37.2%	53.3%	40.1%
Total	Number	1,515	75	6	50	94	75	1,815
	Percent	100.0%	100.0%	100.0%	100.0%	100.0%	100.0%	100.0%

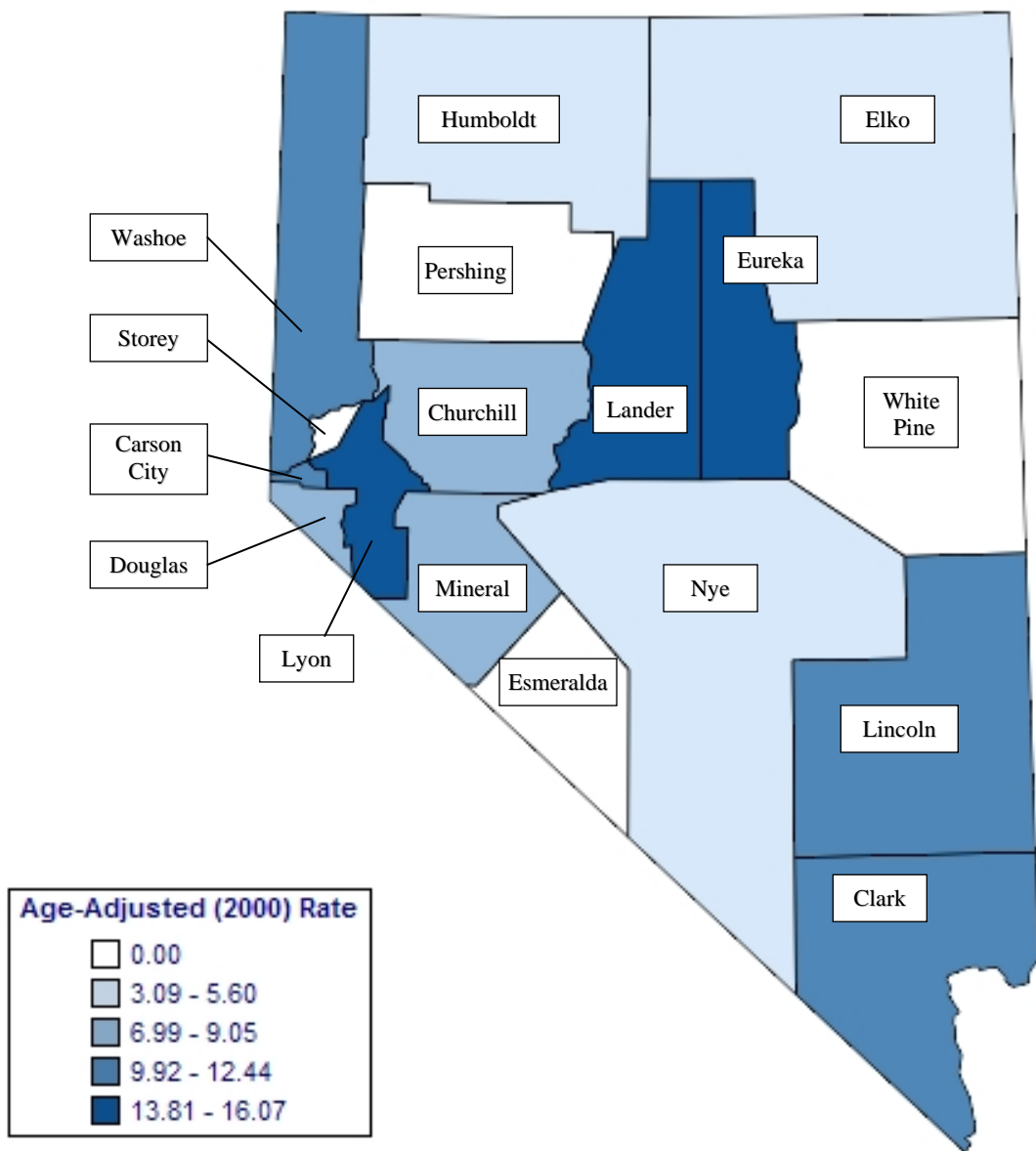
Table 157. Median Age at Diagnosis of Non-Hodgkin's Lymphoma by Race/Ethnicity and Gender, Nevada Residents, 2000-2004

Race/Ethnicity	Gender					
	Male		Female		Total	
	Cases	Median Age	Cases	Median Age	Cases	Median Age
White	846	65.5	669	69.0	1,515	67.0
Black	46	57.0	29	63.0	75	58.0
Native American	3	---	3	---	6	68.5
Asian	30	61.5	20	53.5	50	57.0
Hispanic	57	57.0	37	52.0	94	55.0
Other/Unknown	53	62.0	22	70.5	75	65.0
Total	1,035	64.0	780	68.0	1,815	66.0

Note: Those cases of other/unknown gender and/or unknown ages are not included in this table. The median age was not calculated for those numbers less than five.

INPATIENT HOSPITAL DISCHARGES

Figure 105. Non-Hodgkin’s Lymphoma Age-Adjusted (2000) Inpatient Discharge Rates, Nevada Residents, 2000-2004



Note: Rates are per 100,000 population and age-adjusted to 2000 US Standard population. Caution should be used when interpreting rates based upon small numbers and comparing inpatient hospital discharge rates to other data sources, because it is occurrence based data. See Technical Notes for more information.

Figure 106. Non-Hodgkin’s Lymphoma Age-Adjusted Inpatient Discharge Rates by County/Region of Residence, Nevada Residents, 2000-2004

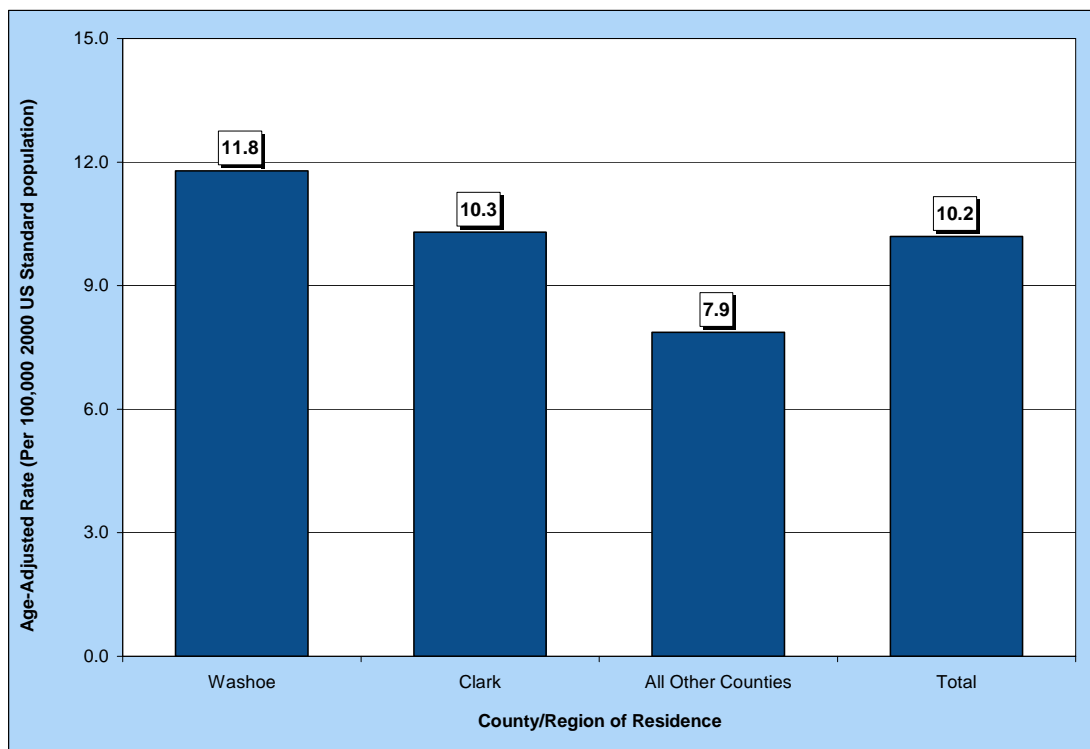


Figure 107. Median Charges for Non-Hodgkin’s Lymphoma Discharges by County/Region of Residence, Nevada Residents, 2000-2004

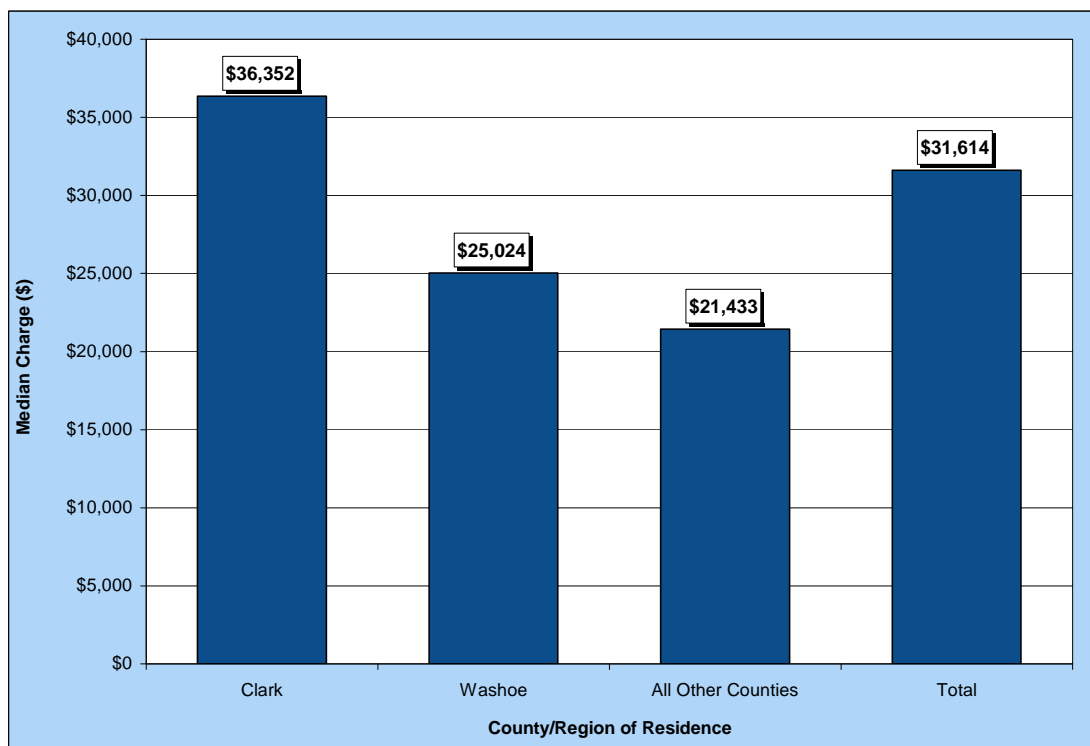


Figure 108. Average Length of Stay for Non-Hodgkin’s Lymphoma Discharges by County/Region of Residence, Nevada Residents, 2000-2004

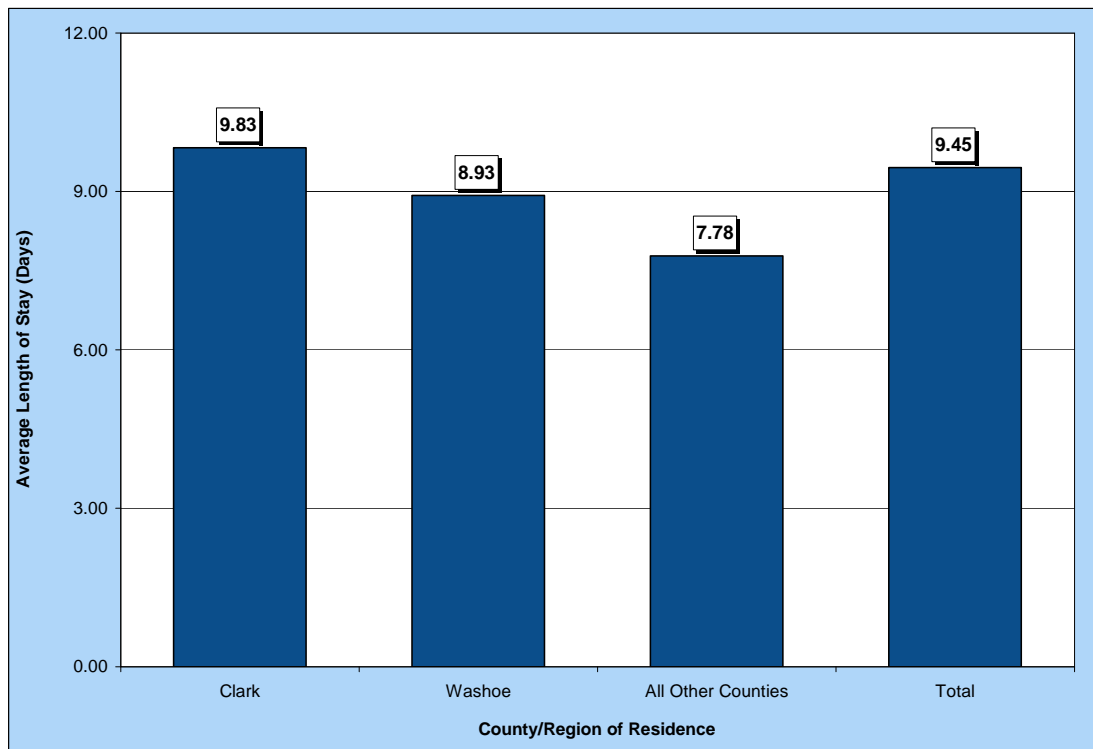


Table 158. Non-Hodgkin's Lymphoma Discharges by Gender, Charges, Length of Stay, and County/Region of Residence, Nevada Residents, 2000-2004

Category	County/Region of Residence				
	Nevada Total	Clark	Washoe	All Other Counties	Unknown
Total					
Discharges	1,055	736	196	122	1
Rate*	10.2	10.3	11.8	7.9	---
95% C.I.	(9.6-10.9)	(9.6-11.1)	(10.2-13.6)	(6.5-9.4)	---
Gender					
Male	583	430	98	55	0
Rate*	11.6	12.4	12.0	7.4	---
95% C.I.	(10.6-12.7)	(11.2-13.8)	(9.6-14.9)	(5.5-9.9)	---
Female	472	306	98	67	1
Rate*	8.9	8.4	11.4	8.3	---
95% C.I.	(8.1-9.8)	(7.4-9.4)	(9.2-13.9)	(6.4-10.6)	---
Other/Unknown	0	0	0	0	0
Inpatient Discharge Charges (\$)					
Total Charges	\$59,713,417	\$44,479,958	\$10,040,841	\$4,786,891	\$405,727
Average Charges	\$56,600	\$60,435	\$51,229	\$39,237	\$405,727
Median Charges	\$31,614	\$36,352	\$25,024	\$21,433	\$405,727
Discharge Length of Stay (LOS) (Days)					
Total LOS	9,968	7,233	1,750	949	36
Average LOS	9.4	9.8	8.9	7.8	36.0
Median LOS	6.0	7.0	6.0	4.0	36.0

* Rates are per 100,000 population and are age-adjusted to the 2000 US Standard population.

Note: The "---" is used for rates calculated on numbers less than ten. Caution should be used when comparing inpatient hospital discharge data to other data sources, since it is occurrence-based data. Please See Technical Notes for more information.

Table 159. Non-Hodgkin's Lymphoma Discharges by Age Group and County/Region of Residence, Nevada Residents, 2000-2004

Category	County/Region of Residence			
	Nevada Total	Clark	Washoe	All Other Counties
Total				
Discharges	1,055	736	196	122
Rate*	9.6	9.6	10.9	8.4
95% C.I.	(9.1-10.2)	(8.9-10.3)	(9.4-12.4)	(6.9-9.9)
Age Group				
<1	1	1	0	0
Rate*	---	---	---	---
95% C.I.	---	---	---	---
1-4	1	1	0	0
Rate*	---	---	---	---
95% C.I.	---	---	---	---
5-14	24	19	3	1
Rate*	1.6	1.7	---	---
95% C.I.	(0.93-2.16)	(0.95-2.52)	---	---
15-24	31	26	4	1
Rate*	2.0	2.4	---	---
95% C.I.	(1.29-2.68)	(1.46-3.28)	---	---
25-34	44	37	4	3
Rate*	2.7	3.1	---	---
95% C.I.	(1.91-3.52)	(2.09-4.08)	---	---
35-44	77	59	10	8
Rate*	4.5	4.9	3.5	---
95% C.I.	(3.51-5.52)	(3.66-6.16)	(1.33-5.68)	---
45-54	153	110	33	10
Rate*	10.3	10.9	12.6	4.5
95% C.I.	(8.62-11.87)	(8.88-12.96)	(8.29-16.88)	(1.70-7.25)
55-64	199	140	41	18
Rate*	18.2	18.6	23.6	10.8
95% C.I.	(15.70-20.76)	(15.54-21.71)	(16.38-30.83)	(5.82-15.81)
65-74	257	169	52	36
Rate*	35.9	34.2	48.8	31.2
95% C.I.	(31.47-40.24)	(29.01-39.31)	(35.54-62.07)	(20.97-41.33)
75-84	213	140	39	34
Rate*	51.8	50.0	61.6	50.1
95% C.I.	(44.87-58.79)	(41.75-58.32)	(42.26-80.92)	(33.26-66.94)
85+	55	34	10	11
Rate*	57.9	55.9	57.3	66.0
95% C.I.	(42.59-73.19)	(37.08-74.62)	(21.78-92.78)	(26.98-104.94)
Unknown	0	0	0	0

* Rates are per 100,000 age-specific population.

Note: The "---" is used for rates calculated on numbers less than ten. Caution should be used when comparing inpatient hospital discharge data to other data sources, since it is occurrence-based data. Please See Technical Notes for more information.

Table 160. Non-Hodgkin's Lymphoma Discharges by Age Group and Gender, Nevada Residents, 2000-2004

Age Group	Gender		
	Male	Female	Total
<1	0	1	1
Rate*	---	---	---
95% C.I.	---	---	---
1-4	1	0	1
Rate*	---	---	---
95% C.I.	---	---	---
5-14	16	8	24
Rate*	2.01	---	1.55
95% C.I.	(1.02-2.99)	---	(0.93-2.16)
15-24	18	13	31
Rate*	2.22	1.73	1.99
95% C.I.	(1.19-3.25)	(0.79-2.67)	(1.29-2.68)
25-34	28	16	44
Rate*	3.32	2.06	2.72
95% C.I.	(2.09-4.55)	(1.05-3.08)	(1.91-3.52)
35-44	57	20	77
Rate*	6.44	2.44	4.52
95% C.I.	(4.77-8.11)	(1.37-3.51)	(3.51-5.52)
45-54	89	64	153
Rate*	11.76	8.69	10.25
95% C.I.	(9.32-14.20)	(6.56-10.82)	(8.62-11.87)
55-64	126	73	199
Rate*	23.41	13.19	18.23
95% C.I.	(19.32-27.50)	(10.16-16.22)	(15.70-20.76)
65-74	129	128	257
Rate*	36.51	35.21	35.85
95% C.I.	(30.21-42.81)	(29.11-41.31)	(31.47-40.24)
75-84	96	117	213
Rate*	51.71	51.92	51.83
95% C.I.	(41.36-62.05)	(42.51-61.33)	(44.87-58.79)
85+	23	32	55
Rate*	72.40	50.60	57.89
95% C.I.	(42.81-101.99)	(33.07-68.13)	(42.59-73.19)
Unknown	0	0	0
Total	583	472	1,055
Rate*	10.49	8.77	9.64
95% C.I.	(9.6-11.3)	(8.0-9.6)	(9.1-10.2)

* Rates are per 100,000 age-specific population.

Note: The "----" is used for rates calculated on numbers less than ten. Caution should be used when comparing inpatient hospital discharge data to other data sources, since it is occurrence-based data. Please See Technical Notes for more information.

Table 161. Non-Hodgkin's Lymphoma Discharges by County/Region of Residence, Nevada Residents, 2000-2004

County of Residence	2000-2004 Inpatient Hospital Discharges				
	Cases	Rate*		Age-Adjusted Rate**	
		Rate	95% C.I.	Rate	95% C.I.
Carson City	30	11.7	(7.5-15.9)	9.9	(6.7-14.4)
Churchill	8	---	---	---	---
Clark	736	9.6	(8.9-10.3)	10.3	(9.6-11.1)
Douglas	25	11.3	(6.9-15.7)	9.1	(5.7-14.0)
Elko	3	---	---	---	---
Esmeralda	0	---	---	---	---
Eureka	1	---	---	---	---
Humboldt	3	---	---	---	---
Lander	2	---	---	---	---
Lincoln	2	---	---	---	---
Lyon	30	15.3	(9.8-20.8)	14.3	(9.6-20.7)
Mineral	3	---	---	---	---
Nye	15	8.5	(4.2-12.8)	5.6	(3.1-9.6)
Pershing	0	---	---	---	---
Storey	0	---	---	---	---
Washoe	196	10.9	(9.4-12.4)	11.8	(10.2-13.6)
White Pine	0	---	---	---	---
Unknown	1	---	---	---	---
Total	1,055	9.6	(9.1-10.2)	10.2	(9.6-10.9)

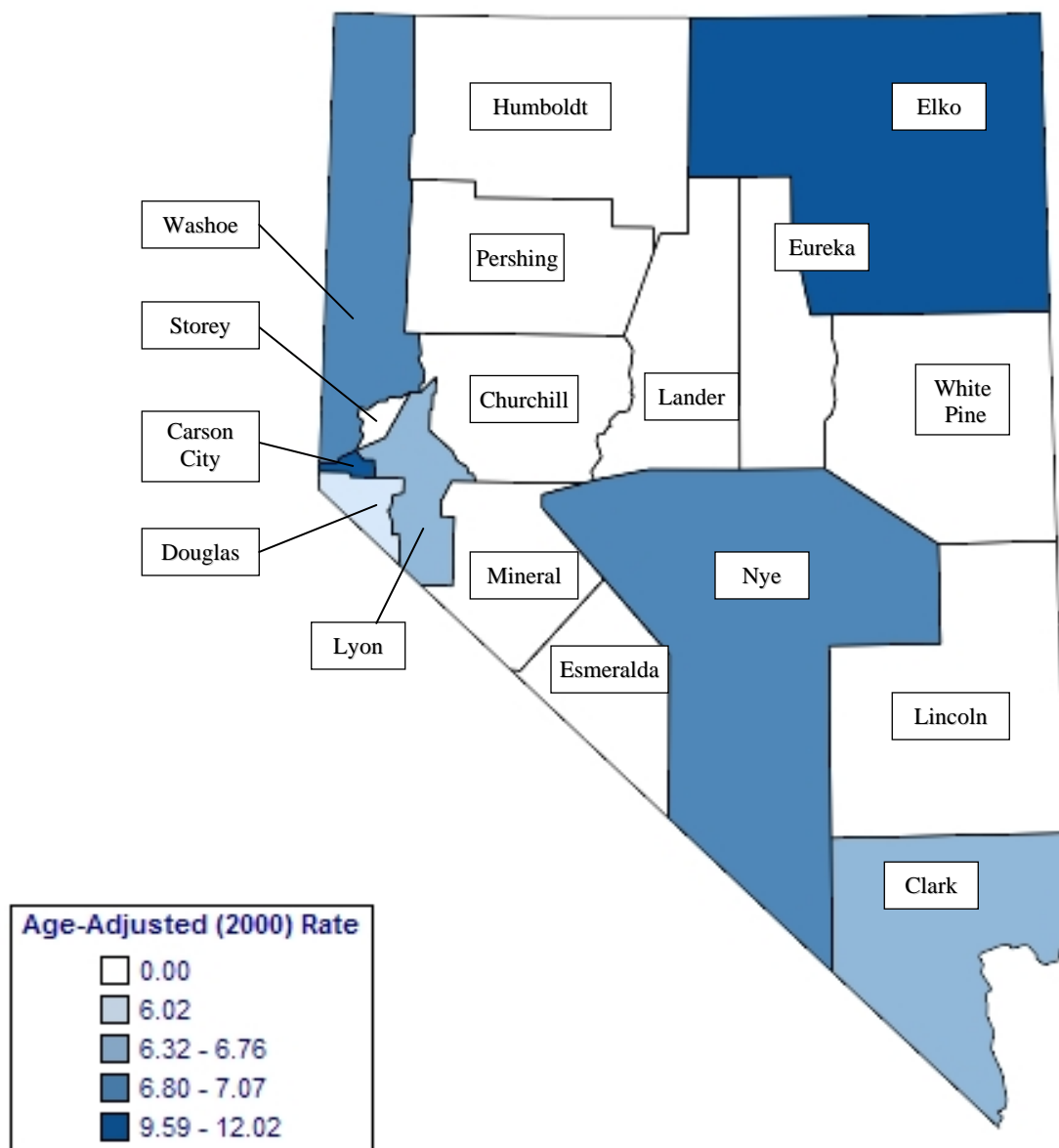
Note: The "---" is used for rates calculated on numbers less than ten. *Rates are per 100,000 population. **Rates are per 100,000 population and are age-adjusted to the 2000 US Standard population.

Table 162. Non-Hodgkin's Lymphoma Discharges by Age Group, Charges and Length of Stay, Nevada Residents, 2000-2004

Age Group	Discharges	Charges (\$)			Length of Stay (Days)		
		Total	Average	Median	Total	Average	Median
<1	1	---	---	---	---	---	---
1-4	1	---	---	---	---	---	---
5-14	24	1,937,559	80,732	40,577	242	10.1	6.0
15-24	31	3,465,050	111,776	43,081	457	14.7	8.0
25-34	44	2,081,594	47,309	33,678	436	9.9	7.0
35-44	77	5,222,710	67,827	36,318	808	10.5	6.0
45-54	153	8,297,838	54,234	29,598	1,371	9.0	6.0
55-64	199	11,465,202	57,614	33,409	2,003	10.1	7.0
65-74	257	14,259,591	55,485	32,341	2,329	9.1	6.0
75-84	213	10,530,766	49,440	27,359	1,806	8.5	6.0
85+	55	2,378,787	43,251	28,658	503	9.2	7.0
Unknown	0	---	---	---	---	---	---
Total	1,055	59,713,417	56,600	31,614	9,968	9.4	6.0

MORTALITY

Figure 109. Non-Hodgkin's Lymphoma Age-Adjusted (2000) Mortality Rates, Nevada Residents, 2000-2004



Note: Rates are per 100,000 population and age-adjusted to 2000 US Standard population. Caution should be used when interpreting rates based upon small numbers. See Technical Notes for more information.

Figure 110. Non-Hodgkin's Lymphoma Age-Adjusted Mortality Rates by County/Region of Residence, Nevada Residents, 2000-2004

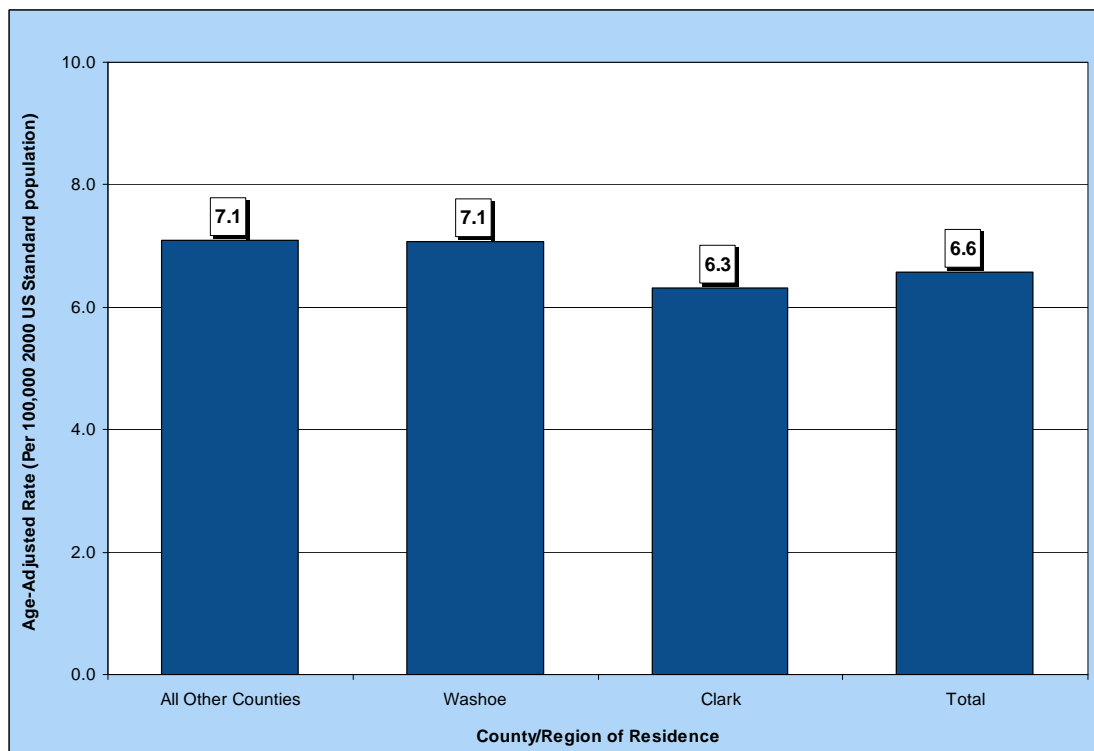


Figure 111. Non-Hodgkin's Lymphoma Age-Adjusted Mortality Rates by Race/Ethnicity, Nevada Residents, 2000-2004

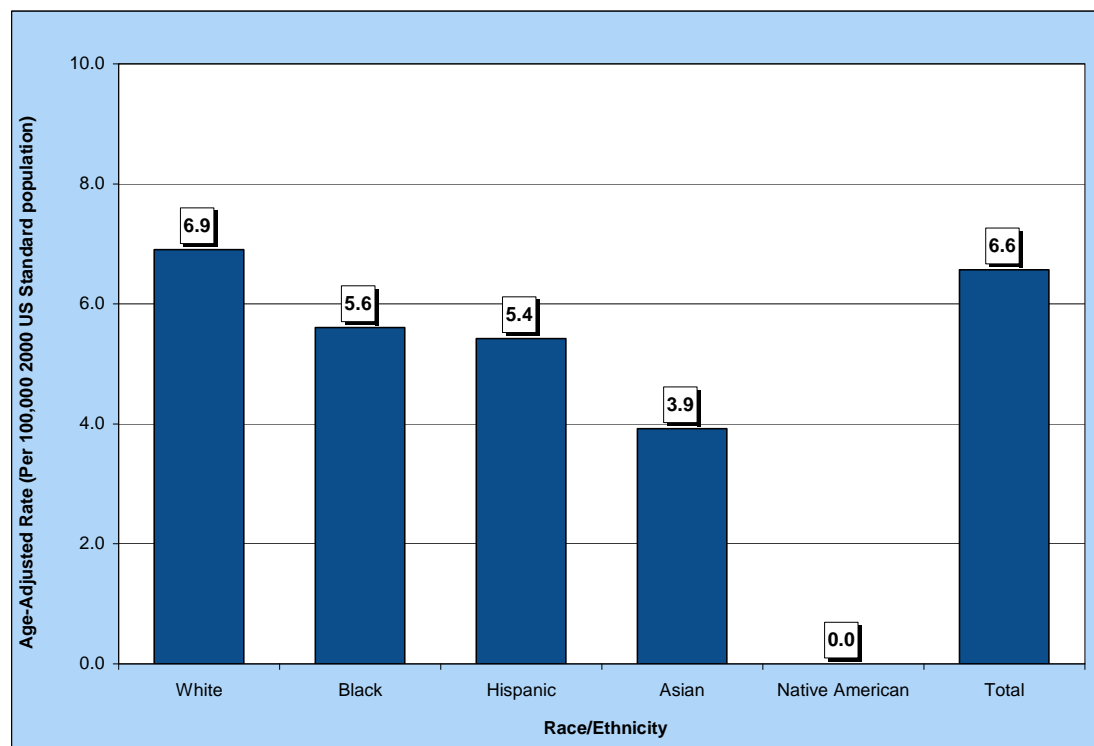


Table 163. Non-Hodgkin's Lymphoma Mortality by Gender, Race/Ethnicity and County/Region of Residence, Nevada Residents, 2000-2004

Category	County/Region of Residence			
	Nevada Total	Clark	Washoe	All Other Counties
Total				
Mortality	630	415	109	106
Rate*	6.6	6.3	7.1	7.1
95% C.I.	(6.0-7.1)	(5.7-7.0)	(5.8-8.6)	(5.8-8.6)
Gender				
Male	357	245	60	52
Rate*	8.2	8.5	8.5	7.2
95% C.I.	(7.3-9.2)	(7.3-9.8)	(6.3-11.2)	(5.3-9.7)
Female	273	170	49	54
Rate*	5.3	4.8	5.9	6.8
95% C.I.	(4.7-6.0)	(4.1-5.6)	(4.4-7.8)	(5.1-8.9)
Other/Unknown	0	0	0	0
Race/Ethnicity				
White	548	352	97	99
Rate*	6.9	6.8	7.2	7.2
95% C.I.	(6.3-7.5)	(6.0-7.5)	(5.8-8.8)	(5.8-8.8)
Black	24	21	2	1
Rate*	5.6	5.4	---	---
95% C.I.	(3.4-8.9)	(3.1-9.0)	---	---
Native American	4	0	2	2
Rate*	---	---	---	---
95% C.I.	---	---	---	---
Asian	19	16	2	1
Rate*	3.9	3.8	---	---
95% C.I.	(2.3-6.4)	(2.1-6.5)	---	---
Hispanic	34	25	6	3
Rate*	5.4	5.5	---	---
95% C.I.	(3.5-8.4)	(3.2-9.2)	---	---
Other/Unknown	1	1	0	0

Note: The "---" is used for rates calculated on numbers less than ten.

*Rates are per 100,000 population and are age-adjusted to the 2000 US Standard population.

Table 164. Non-Hodgkin's Lymphoma Mortality by Age Group and County/Region of Residence, Nevada Residents, 2000-2004

Category	County/Region of Residence			
	Nevada Total	Clark	Washoe	All Other Counties
Total				
Deaths	630	415	109	106
Rate*	6.6	6.3	7.1	7.1
95% C.I.	(6.0-7.1)	(5.7-7.0)	(5.8-8.6)	(5.8-8.6)
Age Group				
<1	0	0	0	0
Rate*	---	---	---	---
95% C.I.	---	---	---	---
1-4	0	0	0	0
Rate*	---	---	---	---
95% C.I.	---	---	---	---
5-14	1	1	0	0
Rate*	---	---	---	---
95% C.I.	---	---	---	---
15-24	5	4	1	0
Rate*	---	---	---	---
95% C.I.	---	---	---	---
25-34	5	5	0	0
Rate*	---	---	---	---
95% C.I.	---	---	---	---
35-44	24	15	6	3
Rate*	1.4	1.3	---	---
95% C.I.	(0.84-1.97)	(0.62-1.88)	---	---
45-54	38	29	5	4
Rate*	2.5	2.9	---	---
95% C.I.	(1.74-3.35)	(1.83-3.93)	---	---
55-64	107	77	19	11
Rate*	9.8	10.3	10.9	6.6
95% C.I.	(7.94-11.66)	(7.96-12.53)	(6.02-15.86)	(2.70-10.52)
65-74	177	117	31	29
Rate*	24.7	23.7	29.1	25.1
95% C.I.	(21.05-28.33)	(19.36-27.93)	(18.85-39.34)	(15.96-34.23)
75-84	193	117	35	41
Rate*	47.0	41.8	55.3	60.4
95% C.I.	(40.33-53.58)	(34.24-49.39)	(36.96-73.58)	(41.92-78.91)
85+	80	50	12	18
Rate*	84.2	82.1	68.7	107.9
95% C.I.	(65.75-102.65)	(59.37-104.90)	(29.85-107.63)	(58.07-157.80)
Unknown	0	0	0	0

* Rates are per 100,000 age-specific population.

Note: The "----" is used for rates calculated on numbers less than ten.

Table 165. Non-Hodgkin's Lymphoma Mortality by County of Residence, Nevada Residents, 2000-2004

County of Residence at Diagnosis	2000-2004 Mortality				
	Cases	Rate*		Age-Adjusted Rate**	
		Rate	95% C.I.	Rate	95% C.I.
Carson City	29	11.3	(7.2-15.5)	9.6	(6.4-14.0)
Churchill	3	---	---	---	---
Clark	415	5.4	(4.9-5.9)	6.3	(5.7-7.0)
Douglas	16	7.2	(3.7-10.8)	6.0	(3.4-10.4)
Elko	12	5.3	(2.3-8.2)	12.0	(5.9-22.3)
Esmeralda	0	---	---	---	---
Eureka	0	---	---	---	---
Humboldt	6	---	---	---	---
Lander	1	---	---	---	---
Lincoln	1	---	---	---	---
Lyon	14	7.1	(3.4-10.9)	6.8	(3.6-11.7)
Mineral	4	---	---	---	---
Nye	16	9.1	(4.6-13.5)	6.8	(3.7-12.0)
Pershing	0	---	---	---	---
Storey	0	---	---	---	---
Washoe	109	6.1	(4.9-7.2)	7.1	(5.8-8.6)
White Pine	4	---	---	---	---
Unknown	0	---	---	---	---
Total	630	5.8	(5.3-6.2)	6.6	(6.0-7.1)

Note: The "---" is used for rates calculated on numbers less than ten. *Rates are per 100,000 population. **Rates are per 100,000 population and are age-adjusted to the 2000 US Standard population.

Table 166. Non-Hodgkin's Lymphoma Mortality by Race/Ethnicity and Gender, Nevada Residents, 2000-2004

Race/Ethnicity	Gender				
	Male	Female	Other/Unknown	Total	
White	Incidence	314	234	0	548
	Rate*	8.7	5.5	---	6.9
	95% C.I.	(7.7-9.9)	(4.8-6.2)	---	(6.3-7.5)
Black	Incidence	12	12	0	24
	Rate*	4.5	5.6	---	5.6
	95% C.I.	(2.2-8.4)	(2.8-10.2)	---	(3.4-8.9)
Native American	Incidence	2	2	0	4
	Rate*	---	---	---	---
	95% C.I.	---	---	---	---
Asian	Incidence	9	10	0	19
	Rate*	---	3.6	---	3.9
	95% C.I.	---	(1.7-7.1)	---	(2.3-6.4)
Hispanic	Incidence	20	14	0	34
	Rate*	7.7	3.9	---	5.4
	95% C.I.	(4.0-14.7)	(2.0-7.5)	---	(3.5-8.4)
Other/Unknown	0	1	0	1	
Total	Incidence	357	273	0	630
	Rate*	8.2	5.3	---	6.6
	95% C.I.	(7.3-9.2)	(4.7-6.0)	---	(6.0-7.1)

Note: The "---" is used for rates calculated on numbers less than ten. *Rates are per 100,000 population and are age-adjusted to the 2000 US Standard population.

Table 167. Non-Hodgkin's Lymphoma Mortality by Age Group and Gender, Nevada Residents, 2000-2004

Age Group	Gender		
	Male	Female	Total
<1	0	0	0
Rate*	---	---	---
95% C.I.	---	---	---
1-4	0	0	0
Rate*	---	---	---
95% C.I.	---	---	---
5-14	1	0	1
Rate*	---	---	---
95% C.I.	---	---	---
15-24	4	1	5
Rate*	---	---	---
95% C.I.	---	---	---
25-34	3	2	5
Rate*	---	---	---
95% C.I.	---	---	---
35-44	16	8	24
Rate*	1.81	---	1.41
95% C.I.	(0.92-2.69)	---	(0.84-1.97)
45-54	26	12	38
Rate*	3.44	1.63	2.54
95% C.I.	(2.11-4.76)	(0.71-2.55)	(1.74-3.35)
55-64	70	37	107
Rate*	13.01	6.69	9.80
95% C.I.	(9.96-16.05)	(4.53-8.84)	(7.94-11.66)
65-74	91	86	177
Rate*	25.76	23.66	24.69
95% C.I.	(20.46-31.05)	(18.66-28.66)	(21.05-28.33)
75-84	107	86	193
Rate*	57.63	38.17	46.96
95% C.I.	(46.71-68.55)	(30.10-46.23)	(40.33-53.58)
85+	39	41	80
Rate*	122.77	64.83	84.20
95% C.I.	(84.24-161.30)	(44.98-84.67)	(65.75-102.65)
Unknown	0	0	0
Total	357	273	630
Rate*	6.42	5.07	5.76
95% C.I.	(5.8-7.1)	(4.5-5.7)	(5.3-6.2)

* Rates are per 100,000 age-specific population.

Note: The "---" is used for rates calculated on numbers less than ten.

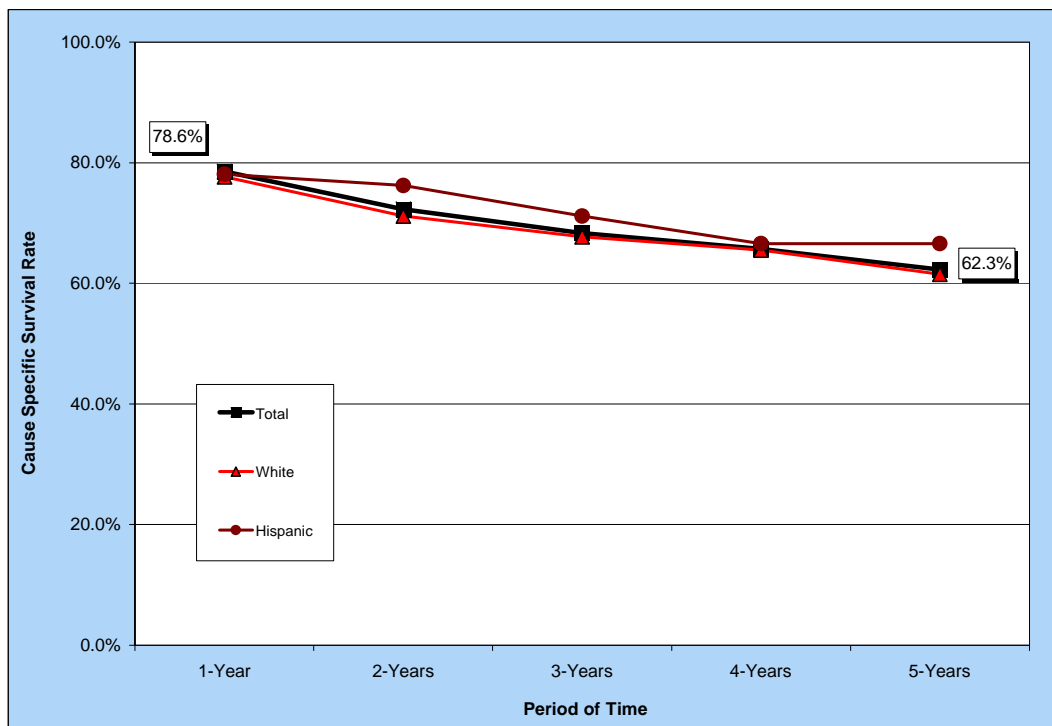
Table 168. Median Age at Death from Non-Hodgkin’s Lymphoma by Race/Ethnicity and Gender, Nevada Residents, 2000-2004

Race/Ethnicity	Gender					
	Male		Female		Total	
	Cases	Median Age	Cases	Median Age	Cases	Median Age
White	314	71.0	234	74.0	548	73.0
Black	12	59.0	12	79.5	24	67.0
Native American	2	---	2	---	4	---
Asian	9	64.0	10	73.0	19	71.0
Hispanic	20	67.0	14	70.5	34	70.0
Other/Unknown	0	---	1	---	1	---
Total	357	71.0	273	74.0	630	73.0

Note: Those cases of other/unknown gender and/or unknown ages are not included in this table. The median age was not calculated for those numbers less than five.

SURVIVAL RATE

Figure 112. Survival Rates for Non-Hodgkin’s Lymphoma by Race/Ethnicity, Nevada Residents, 2000-2004



Notes: The survival rate for those racial/ethnic groups not included in this chart could not be calculated due to small cell size.

Figure 113. Survival Rates for Non-Hodgkin’s Lymphoma by Stage of Cancer at Diagnosis, Nevada Residents, 2000-2004

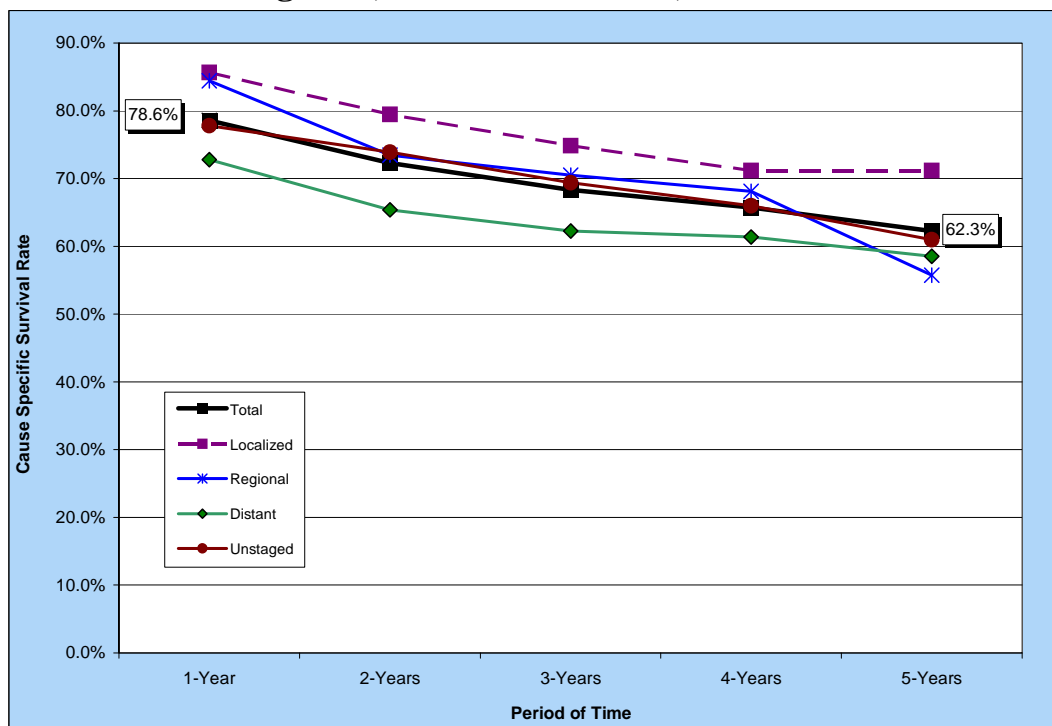


Table 169. Cause-Specific Survival Rates for Non-Hodgkin's Lymphoma by Race/Ethnicity and Gender, Nevada Residents, 2000-2004

Race/ Ethnicity and Gender	Number of Cases	Cause Specific Survival Rate					Median Survival Time (years)
		One Year	Two Years	Three Years	Four Years	Five Years	
Total	1,494	78.6%	72.3%	68.4%	65.7%	62.3%	> 5 YEARS
Male	839	78.4%	71.8%	66.9%	64.2%	60.3%	> 5 YEARS
Female	655	78.8%	72.9%	70.2%	67.6%	64.6%	> 5 YEARS
Race/Ethnicity							
White	1,233	77.7%	71.2%	67.7%	65.5%	61.5%	> 5 YEARS
Male	677	77.0%	69.9%	65.3%	63.2%	58.7%	> 5 YEARS
Female	556	78.4%	72.7%	70.6%	68.2%	64.8%	> 5 YEARS
Black	68	80.3%	71.9%	62.5%	51.6%	51.6%	> 5 YEARS
Male	41	---	---	---	---	---	.
Female	27	---	---	---	---	---	.
Native American	2	---	---	---	---	---	.
Male	0	---	---	---	---	---	---
Female	2	---	---	---	---	---	.
Asian	41	---	---	---	---	---	.
Male	24	---	---	---	---	---	.
Female	17	---	---	---	---	---	.
Hispanic	83	78.1%	76.2%	71.2%	66.6%	66.6%	> 5 YEARS
Male	50	79.6%	76.5%	67.2%	56.9%	56.9%	> 5 YEARS
Female	33	---	---	---	---	---	.

Notes: 1) The "---" indicates that survival rate could not be calculated due to small cell size. Caution should be used when interpreting survival rates based upon categories with a small number of cases. 2) Those cases where the gender and/or race/ethnicity were other/unknown, are not shown separately, but are included in the category totals. 3) These rates may not be directly comparable to national rates because of different methodologies. Caution should be used when trying to compare rates for Nevada and the nation. For more information on the calculation of survival rates, please refer to Technical Notes section.

Table 170. Cause-Specific Survival Rates for Non-Hodgkin’s Lymphoma by Stage of Cancer at Diagnosis and Gender, Nevada Residents, 2000-2004

Survival Rate of Stage at Diagnosis		Gender		
		Total	Male	Female
Total	Cases	1,494	839	655
	One Year	78.6%	78.4%	78.8%
	5 Years	62.3%	60.3%	64.6%
	Median Survival	> 5 YEARS	> 5 YEARS	> 5 YEARS
Stage at Diagnosis				
In situ	Cases	---	---	---
	One Year	---	---	---
	5 Years	---	---	---
	Median Survival	---	---	---
Localized	Cases	319	178	141
	One Year	85.6%	83.6%	88.2%
	5 Years	71.2%	68.7%	74.4%
	Median Survival	> 5 YEARS	> 5 YEARS	> 5 YEARS
Regional	Cases	127	68	59
	One Year	84.4%	84.5%	84.3%
	5 Years	55.8%	42.7%	76.4%
	Median Survival	> 5 YEARS	4.62	> 5 YEARS
Distant	Cases	448	261	187
	One Year	72.8%	71.4%	74.8%
	5 Years	58.5%	56.6%	61.3%
	Median Survival	> 5 YEARS	> 5 YEARS	> 5 YEARS
Unstaged	Cases	600	332	268
	One Year	77.8%	80.0%	75.2%
	5 Years	61.0%	64.8%	56.2%
	Median Survival	> 5 YEARS	> 5 YEARS	> 5 YEARS

Notes: 1) The "---" indicates that survival rate could not be calculated due to small cell size. Caution should be used when interpreting survival rates based upon categories with a small number of cases. 2) These rates may not be directly comparable to national rates because of different methodologies. Caution should be used when trying to compare rates for Nevada and the nation. For more information on the calculation of survival rates, please refer to Technical Notes section.