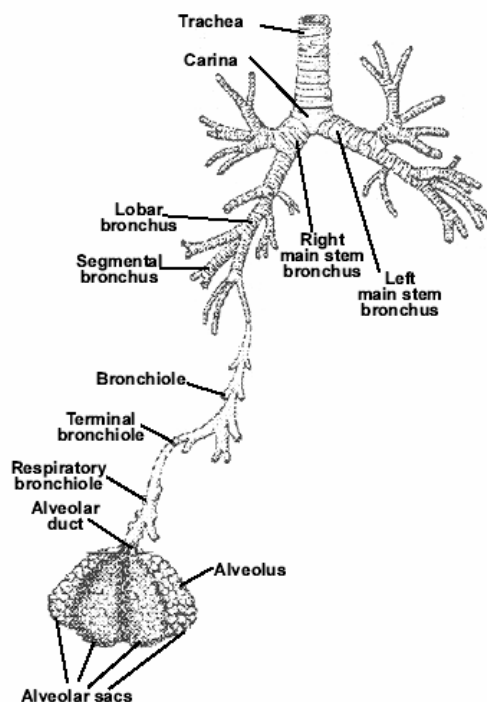


LUNG AND BRONCHUS CANCER

LUNG AND BRONCHUS CANCER

GENERAL PROFILE⁴

Figure 36. Anatomy of the Respiratory Tract⁵



General Anatomy: The lungs, a pair of sponge-like, cone-shaped organs, are part of the respiratory system. The right lung has three sections, called lobes; it is a little larger than the left lung, which has two lobes. When we breathe in, the lungs take in oxygen, which our cells need to live and carry out their normal functions. When we breathe out, the lungs get rid of carbon dioxide, which is a waste product of the body's cells.

Risk Factors: Smoking is the most prevalent risk factor in determining risk for Lung and Bronchus Cancer. Exposure to radon, asbestos, pollution, certain lung diseases, such as tuberculosis, and personal family history are all also important risk factors.

Signs and Symptoms: Common signs and symptoms include: a cough that doesn't go away and gets worse over time, constant chest pain, coughing up blood, shortness of breath, wheezing or hoarseness, repeated problems with pneumonia or bronchitis, swelling of the neck and face, loss of appetite or weight loss, and fatigue.

Diagnosing the Cancer: The most common ways of diagnosing Lung and Bronchus Cancer are: bronchoscopy, needle aspiration, thoracentesis, thoracotomy.

Treatment: Treatment options include: surgery, chemotherapy, radiation therapy, and photodynamic therapy.

HIGHLIGHTS

- Nevadan females had a higher ratio than males when the incidence and mortality age-adjusted rates for Lung and Bronchus Cancer were compared. Females had a ratio of 1.32 while the ratio for males was 1.24. This means that for every 100 deaths due to Lung and Bronchus Cancer there would be 132 female cases while only 124 cases for every male death.
- The median age at diagnosis of Lung and Bronchus cancer was 69 years of age for Nevada residents from 2000 to 2004. The median age at time of death due to Lung and Bronchus cancer was 70 years for males and Nevada overall. The median age at time of death for females was 71 years of age.

INCIDENCE

- There were 7,839 cases of Lung and Bronchus Cancer reported in Nevada from 2000 to 2004, which was the highest of any type of cancer during this period. Clark County had a statistically significant higher incidence rate of Lung and Bronchus Cancer (78.1) during this period, with both Washoe County and All Other Counties, as a region having slightly lower rates of 72.0 and 69.3, respectively. Furthermore, Nevada, as a whole, as well as its three regions had statistically significant higher rates than the national rate of 64.52 (per 100,000 – 2000 US Standard population).
- Whites, as a racial/ethnic group, accounted for 88.7% of all reported cancer cases in Nevada during the 2000 to 2004 period. Their age-adjusted incidence rate of 81.7, followed by Blacks (71.6) showed statistical significance over the rates for Asians and Hispanics, who had rates of 40.2 and 31.6, respectively, during this period.
- The higher age-adjusted incidence rate [85.0,C.I. (82.5-88.0)] for males with Lung and Bronchus cancer was statistically significant at the 95% CL over the rate for females, [68.0, C.I. (65.8-70.3)], during the 2000 to 2004 period. However, both had statistically significant higher rates when compared to their national counterparts. The percentage point difference was considerably more for females who were 30.0% greater than the national rate, 52.3 (52.0-52.6), while the percentage point difference for males was still 4.7% over the national rate, 81.2 (80.7-81.7), during this period.

INPATIENT HOSPITAL DISCHARGES

- Billed charges from Lung and Bronchus Cancer inpatient discharges accounted for approximately 215.1 million dollars from 2000 to 2004. Nevadans in the 55-64 and 65-74 age groups accounted for 64.7% of the total charges during this period. The overall daily billed amount for these discharges was approximately \$5,598 in Nevada during this period.
- There were 4,842 Inpatient Discharges for Lung and Bronchus Cancer to Nevada residents in Nevada from 2000 to 2004. Clark County (47.8) had the highest age-adjusted

inpatient discharge rate for Lung and Bronchus Cancer in Nevada, followed by Nevada overall, Washoe County, and All Other Counties who had rates of 46.0, 45.2 and 39.0 (per 100,000 – 2000 US Standard population), respectively.

- The median total billed charges in Nevada for inpatient discharges due to Lung and Bronchus Cancer from 2000 to 2004 was \$32,755. Clark County had the highest median total billed charge, \$35,058, when compared to the amounts for Washoe County and All Other Counties of \$28,173 and \$25,318.

MORTALITY

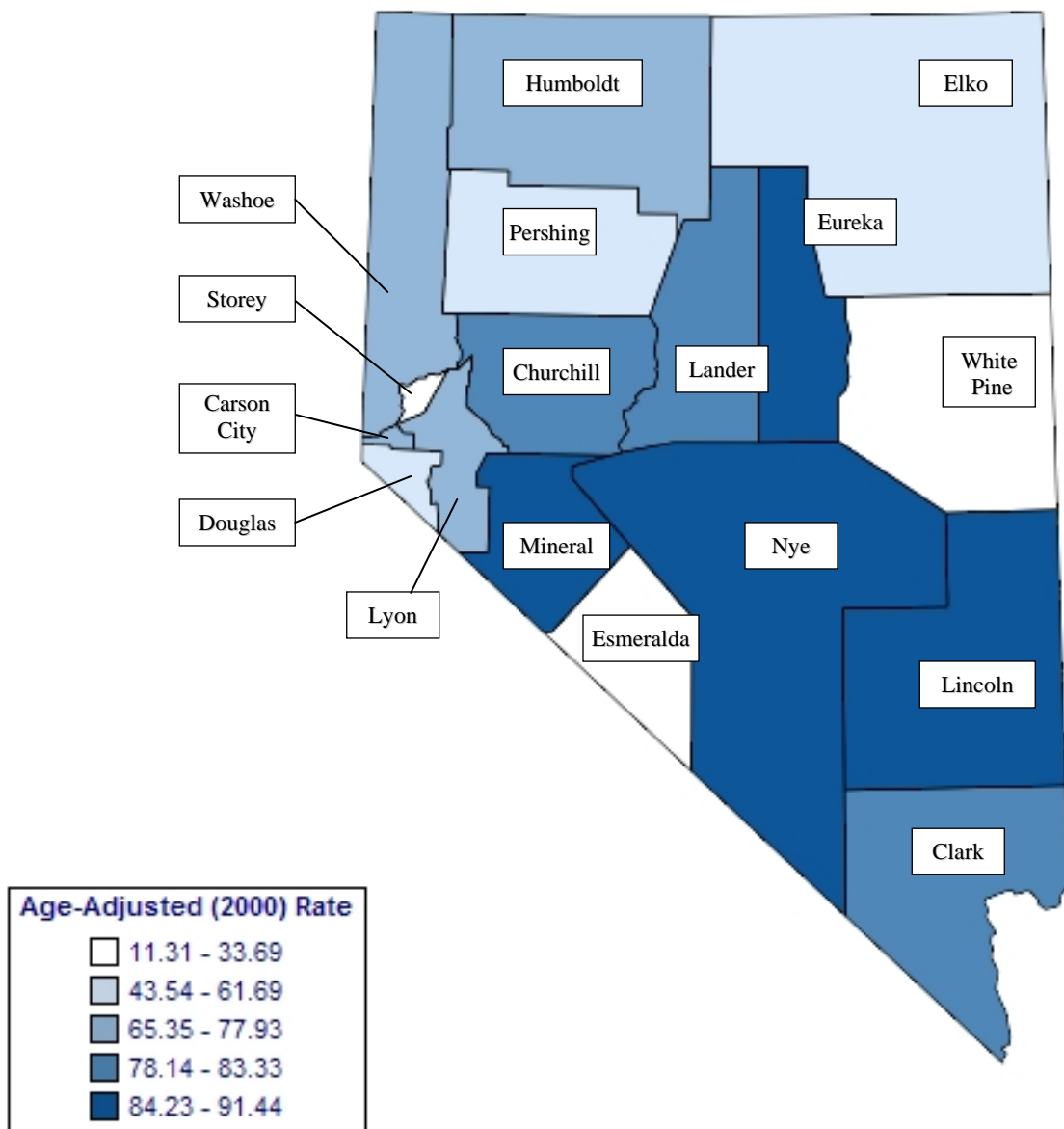
- There were 6,005 resident deaths due to Lung and Bronchus Cancer from 2000 to 2004. All Other Counties, as a region, had a higher age-adjusted mortality rate (60.7) than Washoe County (59.3) and Clark County, (59.0) during the 2000 to 2004 period.
- Nevadan males had a 33.1% higher statistically significant age-adjusted mortality rate 68.7 for Lung and Bronchus Cancer when compared to the female rate of 51.6 (per 100,000 – 2000 US Standard population) for the 2000 to 2004 period.
- Whites and Blacks, as racial/ethnic groups, accounted for 94.9% of all reported Lung and Bronchus cancer cases in Nevada during the 2000 to 2004 period. Their higher age-adjusted incidence rates of 64.4 and 55.7, respectively, showed statistical significance over the rates for Asians, Hispanics and Native Americans, who had rates of 27.0, 24.2 and 25.2, respectively, during this period.

SURVIVAL RATE

- Females had a higher one-year survival rate (44.9%) than males (39.6%) for Lung and Bronchus Cancer in Nevada from 2000 to 2004. This trend was similar for the median survival time with females and males at 0.91 and 0.83 years, respectively. This difference maintained out to the five-year survival rate where females only had a higher rate at 22.4% with males at 18.0% during this period.
- Asians, as a racial/ethnic group, had the highest One-Year Survival Rate for Lung and Bronchus cancer (49.8%) in the state, and were followed by Hispanics, Whites, and Blacks, with rates of 44.6%, 41.6%, and 41.0%, respectively, during the 2000 to 2004 period.
- The Lung and Bronchus Cancer Survival Rate varies greatly by the stage of the cancer at time of diagnosis. Those diagnosed at the localized stage had the highest one- and five-year survival rates with 79.0% and 52.6%, respectively. This was followed by those with Regional and then Distant diagnoses with rates of 55.3% and 23.3% for the one year period and 24.5% and 8.1% for the five year period.

INCIDENCE

Figure 37. Lung and Bronchus Cancer Age-Adjusted (2000) Incidence Rates, Nevada Residents, 2000-2004



Note: Rates are per 100,000 population and age-adjusted to 2000 US Standard population. Caution should be used when interpreting rates based upon small numbers. See Technical Notes for more information.

Figure 38. Lung and Bronchus Cancer Age-Adjusted Incidence Rates by County/Region of Residence, Nevada Residents, 2000-2004

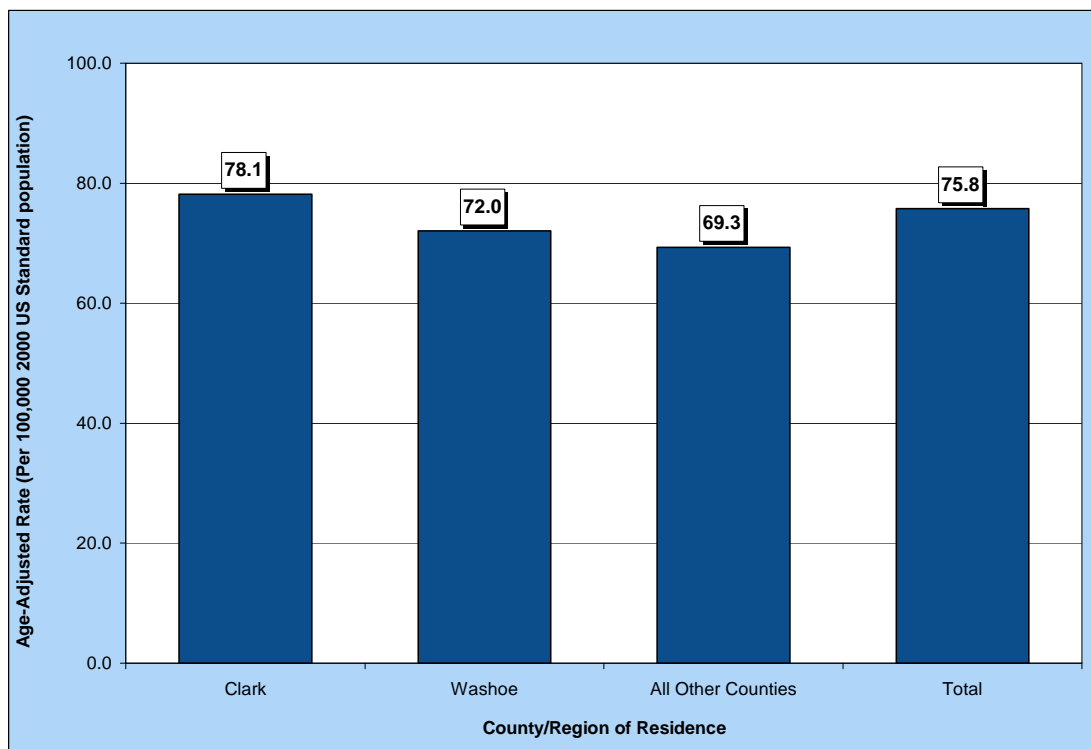


Figure 39. Lung and Bronchus Cancer Age-Adjusted Incidence Rates by Race/Ethnicity, Nevada Residents, 2000-2004

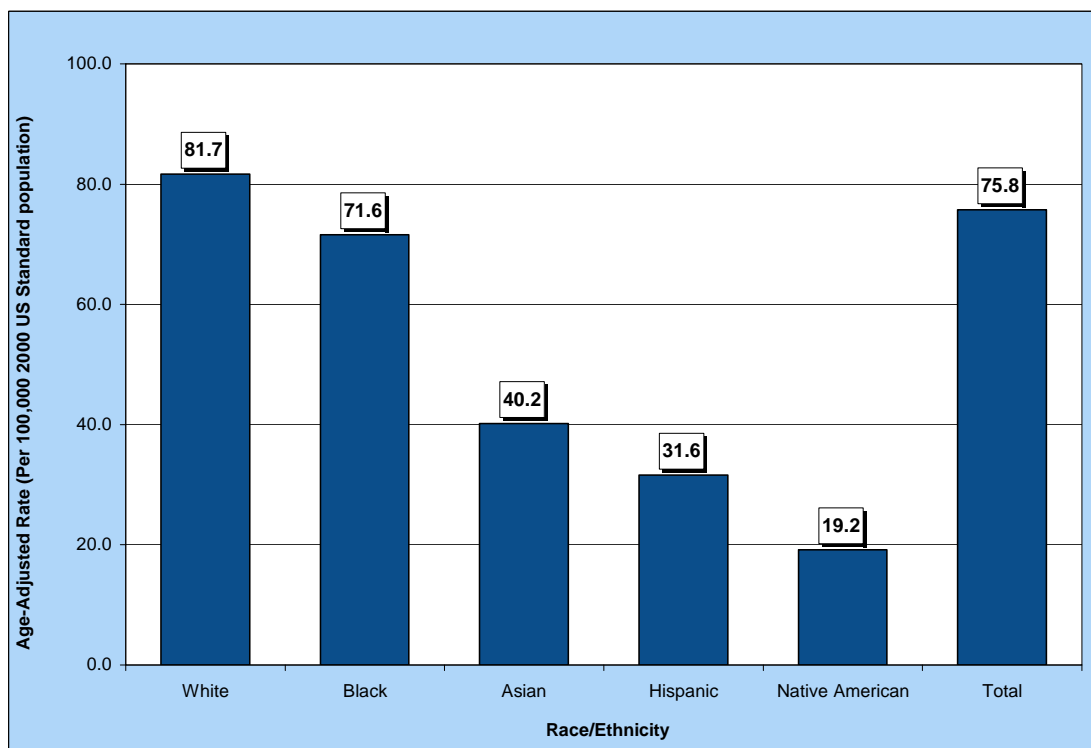


Table 42. Lung and Bronchus Cancer Cases by Gender, Race/Ethnicity and County/Region of Residence at Diagnosis, Nevada Residents (2000-2004) and SEER-17 (2000-2004)

Category	County/Region of Residence					SEER 17 (2000-2004)
	Nevada Total	Clark	Washoe	All Other Counties	Unknown	
Total						
Cases	7,839	5,515	1,166	1,153	5	225,630
Rate*	75.8	78.1	72.0	69.3	---	64.5
95% C.I.	(74.1-77.5)	(76.0-80.3)	(67.9-76.4)	(65.3-73.5)	---	(64.3-64.8)
Gender						
Male	4,139	2,908	601	626	4	122,993
Rate*	85.2	87.7	81.1	78.4	---	81.3
95% C.I.	(82.5-88.0)	(84.4-91.2)	(74.5-88.3)	(72.2-85.1)	---	(80.8-81.8)
Female	3,699	2,607	565	526	1	102,637
Rate*	68.0	70.2	65.6	61.5	---	52.3
95% C.I.	(65.8-70.3)	(67.5-73.0)	(60.3-71.3)	(56.3-67.0)	---	(52.0-52.7)
Other/Unknown	1	0	0	1	0	0
Race/Ethnicity						
White	6,956	4,748	1,089	1,114	5	190,974
Rate*	81.7	85.2	77.2	73.0	---	65.7
95% C.I.	(79.7-83.6)	(82.7-87.7)	(72.6-81.9)	(68.7-77.5)	---	(65.4-66.0)
Black	382	353	24	5	0	22,492
Rate*	71.6	70.8	90.7	---	---	76.7
95% C.I.	(64.3-79.7)	(63.3-79.2)	(57.0-139.7)	---	---	(75.7-77.7)
Native American	22	11	4	7	0	908
Rate*	19.2	21.6	---	---	---	33.1
95% C.I.	(11.6-30.4)	(9.8-43.8)	---	---	---	(30.9-30.9)
Asian	198	161	31	6	0	10,709
Rate*	40.2	39.9	47.5	---	---	39.4
95% C.I.	(34.1-47.8)	(33.1-48.7)	(30.1-77.8)	---	---	(38.7-40.2)
Hispanic	210	180	16	14	0	10,856
Rate*	31.6	35.7	18.3	19.1	---	33.6
95% C.I.	(26.8-37.2)	(29.8-42.8)	(9.4-35.1)	(9.9-34.6)	---	(32.9-34.3)
Other/Unknown	71	62	2	7	0	547

* Rates are per 100,000 population and age-adjusted to the 2000 US Standard population.

Note: The "----" is used for rates calculated on numbers less than ten. Caution should be used when comparing rates for racial/ethnic groups to the national (SEER) rates. See Technical Notes for more information.

Table 43. Lung and Bronchus Cancer Cases by Age Group and County/Region of Residence at Diagnosis, Nevada Residents (2000-2004) and SEER-17 (2000-2004)

Category	County/Region of Residence					SEER 17 (2000-2004)
	Nevada Total	Clark	Washoe	All Other Counties	Unknown	
Total						
Cases	7,839	5,515	1,166	1,153	5	225,630
Rate*	75.8	78.1	72.0	69.3	---	64.5
95% C.I.	(74.1-77.5)	(76.0-80.3)	(67.9-76.4)	(65.3-73.5)	---	(64.3-64.8)
Age Group						
<1	0	0	0	0	0	2
Rate*	---	---	---	---	---	0.0
95% C.I.	---	---	---	---	---	(0.0-0.1)
1-4	0	0	0	0	0	10
Rate*	---	---	---	---	---	0.1
95% C.I.	---	---	---	---	---	(0.0-0.1)
5-14	1	1	0	0	0	17
Rate*	---	---	---	---	---	0.0
95% C.I.	---	---	---	---	---	(0.0-0.1)
15-24	4	3	1	0	0	109
Rate*	---	---	---	---	---	0.2
95% C.I.	---	---	---	---	---	(0.2-0.2)
25-34	9	8	1	0	0	484
Rate*	---	---	---	---	---	0.9
95% C.I.	---	---	---	---	---	(0.8-1.0)
35-44	105	79	14	12	0	4,609
Rate*	6.2	6.6	4.9	5.5	---	7.7
95% C.I.	(4.98-7.34)	(5.13-8.03)	(2.34-7.48)	(2.39-8.60)	---	(7.5-7.9)
45-54	624	444	116	64	0	19,853
Rate*	41.8	44.1	44.3	28.7	---	38.3
95% C.I.	(38.51-45.06)	(39.96-48.16)	(36.20-52.30)	(21.63-35.66)	---	(37.8-38.9)
55-64	1,898	1,337	266	295	0	47,466
Rate*	173.9	177.9	153.1	177.3	---	144.2
95% C.I.	(166.04-181.68)	(168.36-187.43)	(134.74-171.55)	(157.02-197.48)	---	(142.9-145.5)
65-74	2,822	1,992	404	425	1	73,025
Rate*	393.7	402.7	379.2	367.8	---	334.9
95% C.I.	(379.15-408.20)	(384.97-420.33)	(342.22-416.18)	(332.78-402.71)	---	(332.4-337.3)
75-84	2,020	1,395	310	311	4	64,165
Rate*	491.5	498.6	489.6	458.3	---	419.0
95% C.I.	(470.06-512.92)	(472.38-524.71)	(435.06-544.06)	(407.36-509.23)	---	(415.7-422.2)
85+	356	256	54	46	0	15,890
Rate*	374.7	420.5	309.3	275.8	---	287.6
95% C.I.	(335.76-413.61)	(369.00-472.02)	(226.81-391.82)	(196.12-355.55)	---	(283.1-292.1)
Unknown	0	0	0	0	0	0

* Rates are per 100,000 age-specific population.

Note: The "----" is used for rates calculated on numbers less than ten and SEER numbers less than five. See Technical Notes for more information.

Table 44. Lung and Bronchus Cancer Cases by County of Residence at Diagnosis, Nevada Residents, 2000-2004

County of Residence at Diagnosis	2000-2004 Incidence				
	Cases	Rate*		Age-Adjusted Rate**	
		Rate	95% C.I.	Rate	95% C.I.
Carson City	231	90.4	(78.7-102.0)	73.9	(64.6-84.2)
Churchill	101	80.9	(65.1-96.7)	83.3	(67.8-101.8)
Clark	5,515	71.6	(69.8-73.5)	78.1	(76.0-80.3)
Douglas	179	80.8	(69.0-92.6)	61.7	(52.8-72.0)
Elko	61	26.7	(20.0-33.4)	43.5	(32.5-58.0)
Esmeralda	1	---	---	---	---
Eureka	8	---	---	---	---
Humboldt	44	54.4	(38.3-70.4)	65.4	(46.9-89.5)
Lander	17	61.9	(32.5-91.4)	80.5	(44.4-137.8)
Lincoln	20	113.5	(63.8-163.3)	84.5	(51.3-134.2)
Lyon	187	95.4	(81.8-109.1)	77.9	(67.1-90.3)
Mineral	33	139.1	(91.7-186.6)	91.4	(62.3-133.6)
Nye	232	131.7	(114.7-148.6)	84.2	(73.3-96.8)
Pershing	14	51.5	(24.5-78.5)	52.5	(28.6-89.4)
Storey	7	---	---	---	---
Washoe	1,166	64.9	(61.2-68.7)	72.0	(67.9-76.4)
White Pine	18	47.2	(25.4-69.0)	33.7	(19.9-53.4)
Unknown	5	---	---	---	---
Total	7,839	71.6	(70.1-73.2)	75.8	(74.1-77.5)

Note: The "---" is used for rates calculated on numbers less than ten. *Rates are per 100,000 population. **Rates are per 100,000 population and are age-adjusted to the 2000 US Standard population.

Table 45. Lung and Bronchus Cancer Cases by Race/Ethnicity and Gender, Nevada Residents, 2000-2004

Race/Ethnicity	Gender				
	Male	Female	Other/Unknown	Total	
White	Incidence	3,640	3,315	1	6,956
	Rate*	90.0	74.9	---	81.7
	95% C.I.	(87.0-93.2)	(72.4-77.5)	---	(79.7-83.6)
Black	Incidence	214	168	0	382
	Rate*	83.2	60.5	---	71.6
	95% C.I.	(71.9-97.0)	(51.4-70.9)	---	(64.3-79.7)
Native American	Incidence	14	8	0	22
	Rate*	28.1	---	---	19.2
	95% C.I.	(14.5-50.6)	---	---	(11.6-30.4)
Asian	Incidence	109	89	0	198
	Rate*	55.8	29.1	---	40.2
	95% C.I.	(44.4-71.3)	(22.8-38.0)	---	(34.1-47.8)
Hispanic	Incidence	123	87	0	210
	Rate*	38.3	25.6	---	31.6
	95% C.I.	(30.5-48.7)	(19.9-32.7)	---	(26.8-37.2)
Other/Unknown	39	32	0	71	
Total	Incidence	4,139	3,699	1	7,839
	Rate*	85.2	68.0	---	75.8
	95% C.I.	(82.5-88.0)	(65.8-70.3)	---	(74.1-77.5)

Note: The "---" is used for rates calculated on numbers less than ten.

*Rates are per 100,000 population and are age-adjusted to the 2000 US Standard population.

Table 46. Lung and Bronchus Cancer Cases by Age Group and Gender, Nevada Residents, 2000-2004

Age Group	Gender			
	Male	Female	Unknown	Total
<1	0	0	0	0
Rate*	---	---	---	---
95% C.I.	---	---	---	---
1-4	0	0	0	0
Rate*	---	---	---	---
95% C.I.	---	---	---	---
5-14	0	1	0	1
Rate*	---	---	---	---
95% C.I.	---	---	---	---
15-24	2	2	0	4
Rate*	---	---	---	---
95% C.I.	---	---	---	---
25-34	5	4	0	9
Rate*	---	---	---	---
95% C.I.	---	---	---	---
35-44	60	45	0	105
Rate*	6.78	5.49	---	6.16
95% C.I.	(5.06-8.49)	(3.88-7.09)	---	(4.98-7.34)
45-54	322	302	0	624
Rate*	42.54	41.01	---	41.79
95% C.I.	(37.89-47.19)	(36.38-45.64)	---	(38.51-45.06)
55-64	974	923	1	1,898
Rate*	180.97	166.76	---	173.86
95% C.I.	(169.60-192.34)	(156.01-177.52)	---	(166.04-181.68)
65-74	1,582	1,240	0	2,822
Rate*	447.75	341.12	---	393.68
95% C.I.	(425.69-469.82)	(322.13-360.10)	---	(379.15-408.20)
75-84	1,030	990	0	2,020
Rate*	554.76	439.35	---	491.49
95% C.I.	(520.88-588.64)	(411.99-466.72)	---	(470.06-512.92)
85+	164	192	0	356
Rate*	516.26	303.58	---	374.69
95% C.I.	(437.24-595.27)	(260.64-346.52)	---	(335.76-413.61)
Unknown	0	0	0	0
Total	4,139	3,699	1	7,839
Rate*	74.46	68.72	---	71.65
95% C.I.	(72.2-76.7)	(66.5-70.9)	---	(70.1-73.2)

Note: The "---" is used for rates calculated on numbers less than ten.

* Rates are per 100,000 age-specific population.

Table 47. Lung and Bronchus Cancer Cases by Age Group and Stage, Nevada Residents, 2000-2004

Age Group		Stage					Total
		In situ	Localized	Regional	Distant	Unstaged	
<1	Number	---	0	0	0	0	0
	Percent	---	---	---	---	---	---
1-4	Number	---	0	0	0	0	0
	Percent	---	---	---	---	---	---
5-14	Number	---	0	1	0	0	1
	Percent	---	---	100.0%	---	---	100.0%
15-24	Number	---	1	2	1	0	4
	Percent	---	25.0%	50.0%	25.0%	---	100.0%
25-34	Number	---	1	0	3	5	9
	Percent	---	11.1%	---	33.3%	55.6%	100.0%
35-44	Number	---	16	17	48	24	105
	Percent	---	15.2%	16.2%	45.7%	22.9%	100.0%
45-54	Number	---	69	131	271	153	624
	Percent	---	11.1%	21.0%	43.4%	24.5%	100.0%
55-64	Number	---	233	340	729	596	1,898
	Percent	---	12.3%	17.9%	38.4%	31.4%	100.0%
65-74	Number	---	466	523	867	966	2,822
	Percent	---	16.5%	18.5%	30.7%	34.2%	100.0%
75-84	Number	---	315	339	563	803	2,020
	Percent	---	15.6%	16.8%	27.9%	39.8%	100.0%
85+	Number	---	31	44	91	190	356
	Percent	---	8.7%	12.4%	25.6%	53.4%	100.0%
Unknown	Number	---	0	0	0	0	0
	Percent	---	---	---	---	---	---
Total	Number	---	1,132	1,397	2,573	2,737	7,839
	Percent	---	14.4%	17.8%	32.8%	34.9%	100.0%

Table 48. Lung and Bronchus Cancer Cases by Stage and Race/Ethnicity, Nevada Residents, 2000-2004

Stage		Race/Ethnicity						Total
		White	Black	Native American	Asian	Hispanic	Other/Unknown	
In situ	Number	---	---	---	---	---	---	---
	Percent	---	---	---	---	---	---	---
Localized	Number	1,016	56	1	22	25	12	1,132
	Percent	14.6%	14.7%	4.5%	11.1%	11.9%	16.9%	14.4%
Regional	Number	1,269	58	6	23	33	8	1,397
	Percent	18.2%	15.2%	27.3%	11.6%	15.7%	11.3%	17.8%
Distant	Number	2,249	136	14	85	79	10	2,573
	Percent	32.3%	35.6%	63.6%	42.9%	37.6%	14.1%	32.8%
Unstaged	Number	2,422	132	1	68	73	41	2,737
	Percent	34.8%	34.6%	4.5%	34.3%	34.8%	57.7%	34.9%
Total	Number	6,956	382	22	198	210	71	7,839
	Percent	100.0%	100.0%	100.0%	100.0%	100.0%	100.0%	100.0%

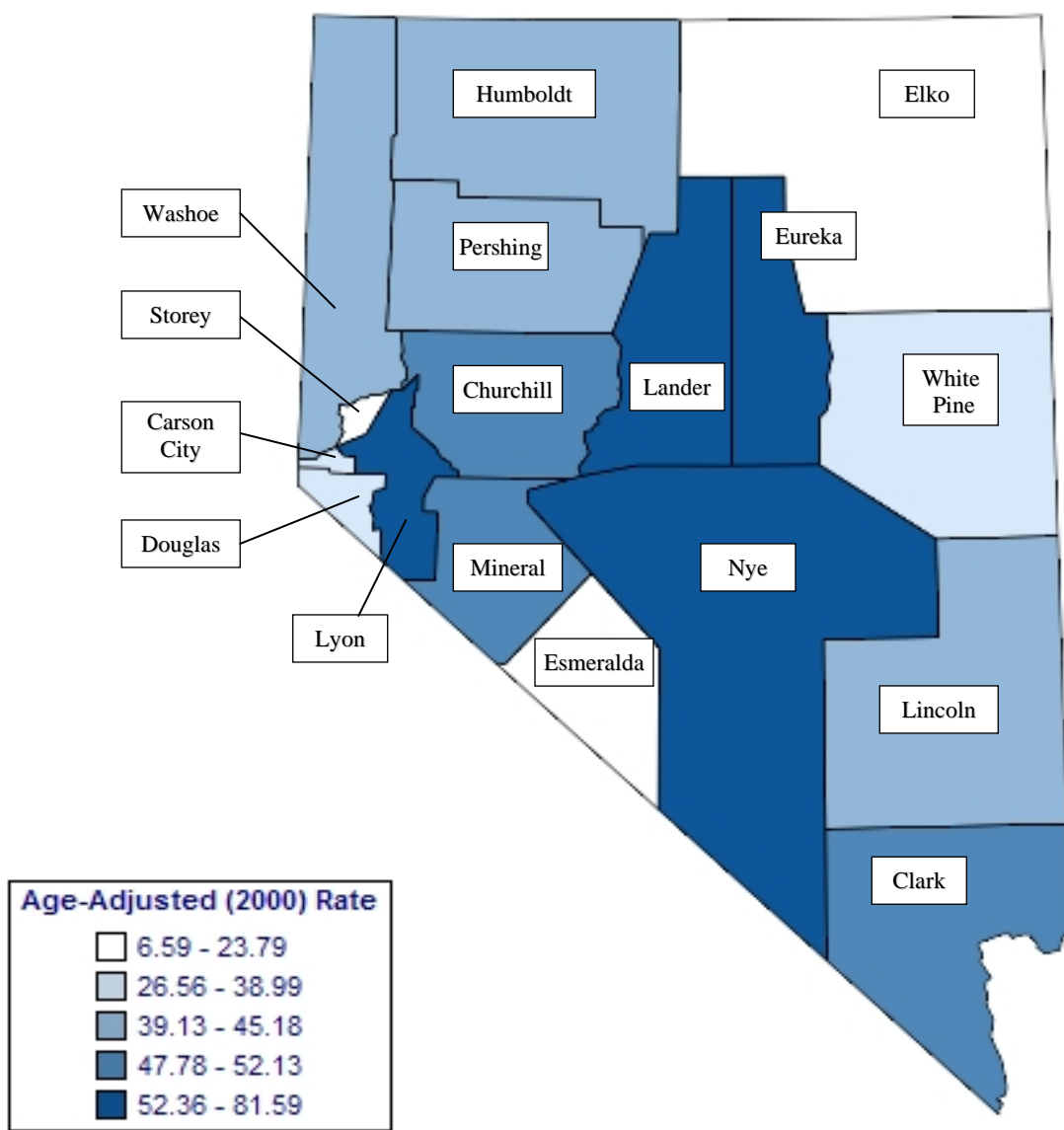
Table 49. Median Age at Diagnosis of Lung and Bronchus Cancer by Race/Ethnicity and Gender, Nevada Residents, 2000-2004

Race/Ethnicity	Gender					
	Male		Female		Total	
	Cases	Median Age	Cases	Median Age	Cases	Median Age
White	3,640	69.0	3,315	70.0	6,955	69.0
Black	214	65.0	168	67.0	382	66.0
Native American	14	62.5	8	63.5	22	63.5
Asian	109	68.0	89	65.0	198	67.0
Hispanic	123	65.0	87	68.0	210	67.0
Other/Unknown	39	69.0	32	69.0	71	69.0
Total	4,139	69.0	3,699	69.0	7,838	69.0

Note: Those cases of other/unknown gender and/or unknown ages are not included in this table. The median age was not calculated for those numbers less than five.

INPATIENT HOSPITAL DISCHARGES

Figure 40. Lung and Bronchus Cancer Age-Adjusted (2000) Inpatient Hospital Discharge Rates, Nevada Residents, 2000-2004



Note: Rates are per 100,000 population and age-adjusted to 2000 US Standard population. Caution should be used when interpreting rates based upon small numbers and comparing inpatient hospital discharge rates to other data sources, because it is occurrence based data. See Technical Notes for more information.

Figure 41. Lung and Bronchus Cancer Age-Adjusted Inpatient Discharge Rates by County/Region of Residence, Nevada Residents, 2000-2004

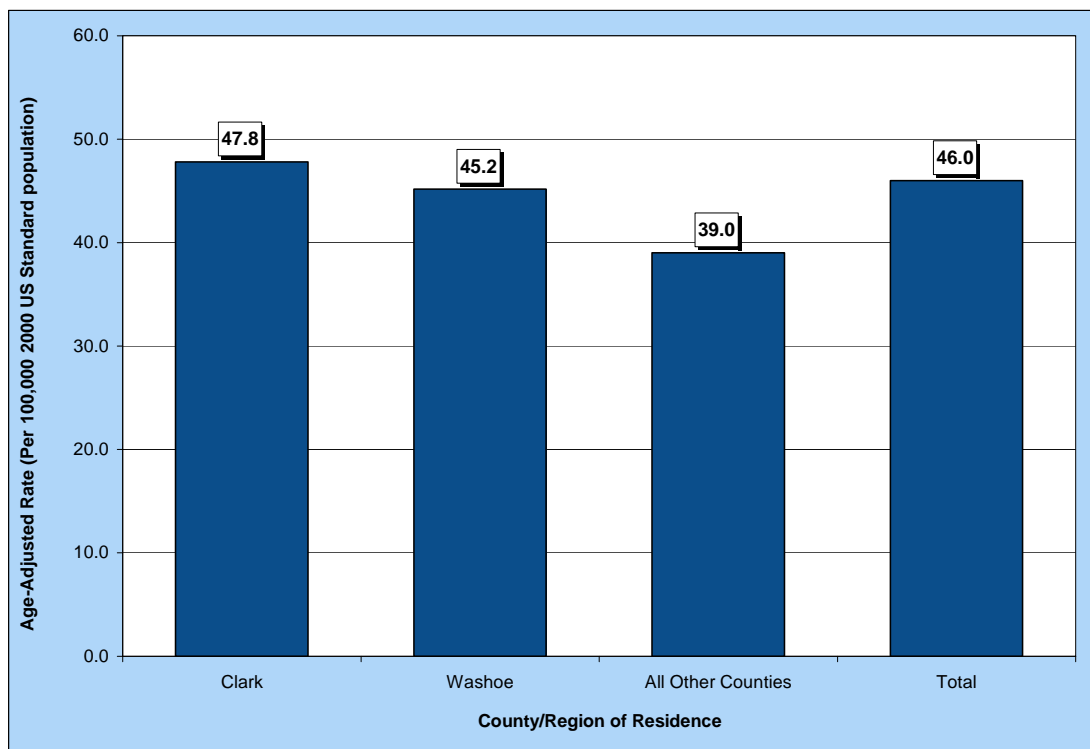


Figure 42. Median Charges for Lung and Bronchus Cancer Inpatient Discharges by County/Region of Residence, Nevada Residents, 2000-2004

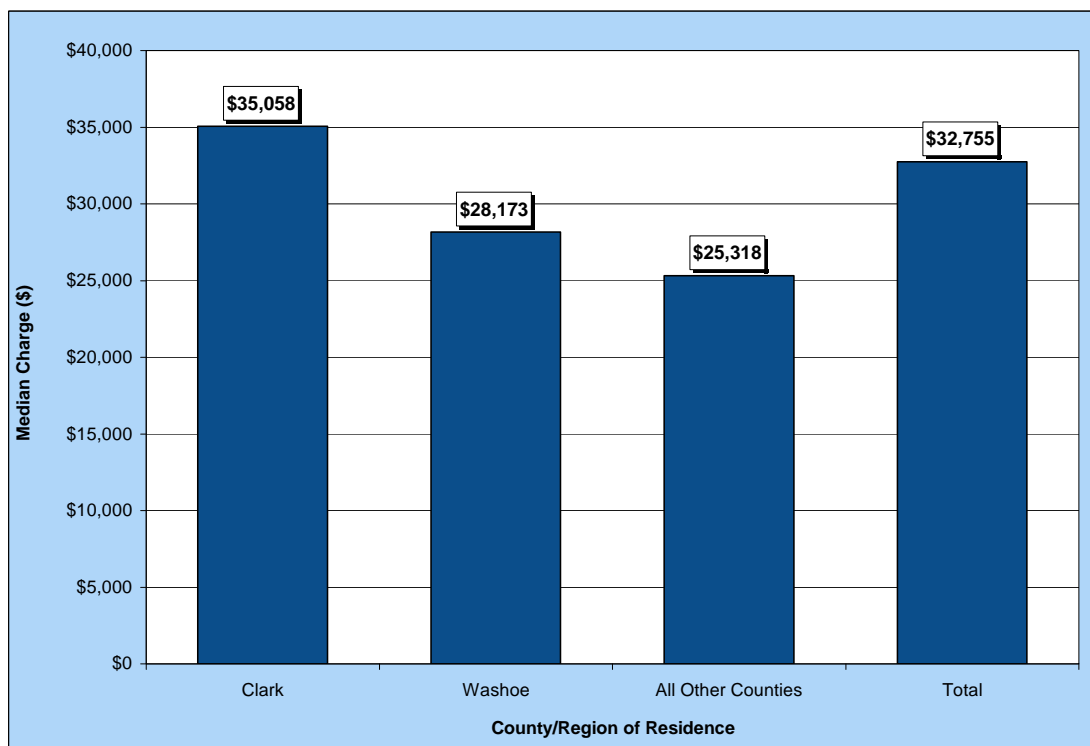


Figure 43. Average Length of Stay for Lung and Bronchus Cancer Inpatient Discharges by County/Region of Residence, Nevada Residents, 2000-2004

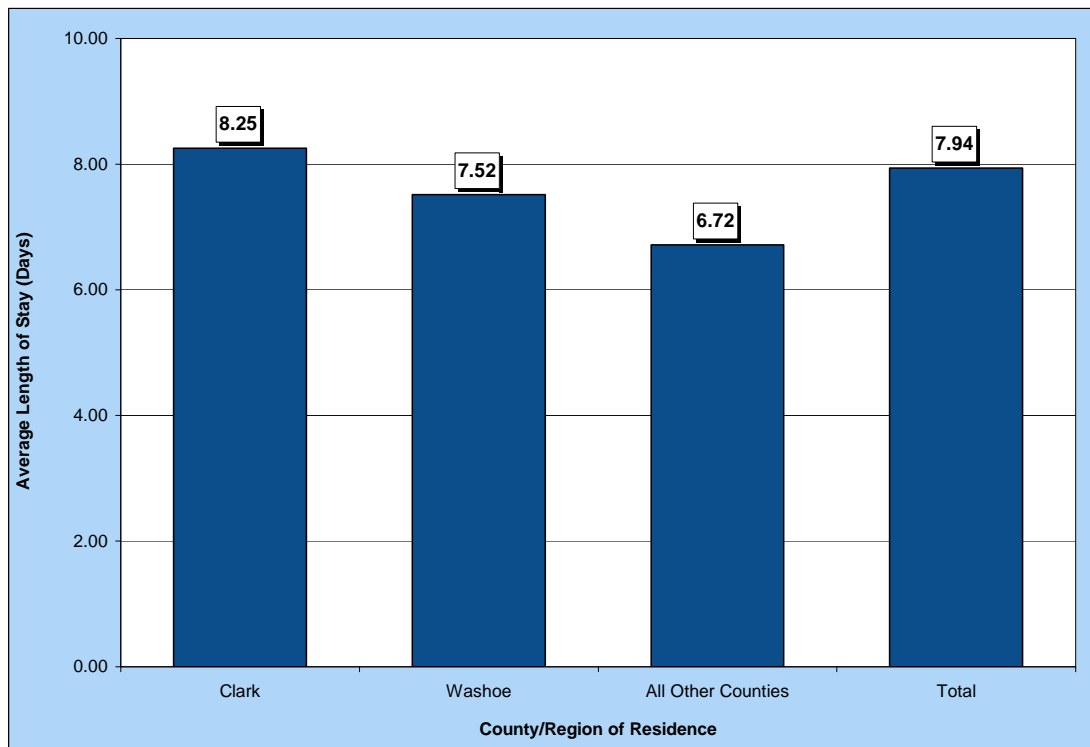


Table 50. Lung and Bronchus Cancer Inpatient Discharges by Gender, Charges, Length of Stay, and County/Region of Residence, Nevada Residents, 2000-2004

Category	County/Region of Residence				
	Nevada Total	Clark	Washoe	All Other Counties	Unknown
Total					
Discharges	4,842	3,449	738	653	2
Rate*	46.0	47.8	45.2	39.0	---
95% C.I.	(44.7-47.3)	(46.2-49.5)	(41.9-48.6)	(36.1-42.2)	---
Gender					
Male	2,463	1,798	331	333	1
Rate*	49.3	52.5	43.6	41.4	---
95% C.I.	(47.3-51.4)	(50.0-55.2)	(38.9-48.9)	(37.0-46.4)	---
Female	2,379	1,651	407	320	1
Rate*	43.3	43.8	47.2	37.4	---
95% C.I.	(41.6-45.1)	(41.7-46.0)	(42.7-52.0)	(33.4-41.8)	---
Other/Unknown	0	0	0	0	0
Inpatient Discharge Charges (\$)					
Total Charges	\$215,074,862	\$163,330,103	\$29,067,516	\$22,553,901	\$123,342
Average Charges	\$44,419	\$47,356	\$39,387	\$34,539	\$61,671
Median Charges	\$32,755	\$35,058	\$28,173	\$25,318	\$61,671
Discharge Length of Stay (LOS) (Days)					
Total LOS	38,422	28,461	5,548	4,386	27
Average LOS	7.9	8.3	7.5	6.7	13.5
Median LOS	6.0	7.0	6.0	5.0	13.5

* Rates are per 100,000 population and are age-adjusted to the 2000 US Standard population.

Note: The "---" is used for rates calculated on numbers less than ten. Caution should be used when comparing inpatient hospital discharge data to other data sources, since it is occurrence-based data. Please See Technical Notes for more information.

Table 51. Lung and Bronchus Cancer Inpatient Discharges by Age Group and County/Region of Residence, Nevada Residents, 2000-2004

Category	County/Region of Residence			
	Nevada Total	Clark	Washoe	All Other Counties
Total				
Discharges	4,842	3,449	738	653
Rate*	44.3	44.8	41.1	45.1
95% C.I.	(43.0-45.5)	(43.3-46.3)	(38.1-44.1)	(41.6-48.5)
Age Group				
<1	0	0	0	0
Rate*	---	---	---	---
95% C.I.	---	---	---	---
1-4	0	0	0	0
Rate*	---	---	---	---
95% C.I.	---	---	---	---
5-14	0	0	0	0
Rate*	---	---	---	---
95% C.I.	---	---	---	---
15-24	6	4	1	1
Rate*	---	---	---	---
95% C.I.	---	---	---	---
25-34	8	6	1	1
Rate*	---	---	---	---
95% C.I.	---	---	---	---
35-44	95	73	10	12
Rate*	5.6	6.1	3.5	5.5
95% C.I.	(4.45-6.69)	(4.68-7.47)	(1.33-5.68)	(2.39-8.60)
45-54	457	348	69	40
Rate*	30.6	34.5	26.3	17.9
95% C.I.	(27.80-33.41)	(30.90-38.16)	(20.11-32.53)	(12.36-23.45)
55-64	1,268	912	184	172
Rate*	116.2	121.4	105.9	103.4
95% C.I.	(109.76-122.54)	(113.47-129.22)	(90.63-121.24)	(87.90-118.79)
65-74	1,695	1,200	255	238
Rate*	236.5	242.6	239.4	205.9
95% C.I.	(225.20-247.71)	(228.83-256.28)	(209.97-268.72)	(179.77-232.10)
75-84	1,173	809	192	172
Rate*	285.4	289.1	303.2	253.5
95% C.I.	(269.07-301.74)	(269.20-309.04)	(260.32-346.10)	(215.58-291.34)
85+	140	97	26	17
Rate*	147.4	159.3	148.9	101.9
95% C.I.	(122.94-171.76)	(127.63-191.04)	(91.68-206.18)	(53.48-150.40)
Unknown	0	0	0	0

* Rates are per 100,000 age-specific population.

Note: The "----" is used for rates calculated on numbers less than ten. Caution should be used when comparing inpatient hospital discharge data to other data sources, since it is occurrence-based data. Please See Technical Notes for more information.

Table 52. Lung and Bronchus Cancer Inpatient Discharges by Age Group and Gender, Nevada Residents, 2000-2004

Age Group	Gender		
	Male	Female	Total
<1	0	0	0
Rate*	---	---	---
95% C.I.	---	---	---
1-4	0	0	0
Rate*	---	---	---
95% C.I.	---	---	---
5-14	0	0	0
Rate*	---	---	---
95% C.I.	---	---	---
15-24	4	2	6
Rate*	---	---	---
95% C.I.	---	---	---
25-34	4	4	8
Rate*	---	---	---
95% C.I.	---	---	---
35-44	50	45	95
Rate*	5.65	5.49	5.57
95% C.I.	(4.08-7.21)	(3.88-7.09)	(4.45-6.69)
45-54	229	228	457
Rate*	30.25	30.96	30.60
95% C.I.	(26.34-34.17)	(26.94-34.98)	(27.80-33.41)
55-64	621	647	1,268
Rate*	115.38	116.90	116.15
95% C.I.	(106.31-124.46)	(107.89-125.91)	(109.76-122.54)
65-74	907	788	1,695
Rate*	256.71	216.77	236.46
95% C.I.	(240.00-273.41)	(201.64-231.91)	(225.20-247.71)
75-84	586	587	1,173
Rate*	315.62	260.51	285.40
95% C.I.	(290.07-341.18)	(239.43-281.58)	(269.07-301.74)
85+	62	78	140
Rate*	195.17	123.33	147.35
95% C.I.	(146.59-243.75)	(95.96-150.70)	(122.94-171.76)
Unknown	0	0	0
Total	2,463	2,379	4,842
Rate*	44.31	44.20	44.25
95% C.I.	(42.6-46.1)	(42.4-46.0)	(43.0-45.5)

* Rates are per 100,000 age-specific population.

Note: The "---" is used for rates calculated on numbers less than ten. Caution should be used when comparing inpatient hospital discharge data to other data sources, since it is occurrence-based data. Please See Technical Notes for more information.

Table 53. Lung and Bronchus Cancer Inpatient Discharges by County/Region of Residence, Nevada Residents, 2000-2004

County of Residence	2000-2004 Inpatient Hospital Discharges				
	Cases	Rate*		Age-Adjusted Rate**	
		Rate	95% C.I.	Rate	95% C.I.
Carson City	84	32.9	(25.8-39.9)	26.6	(21.2-32.9)
Churchill	58	46.4	(34.5-58.4)	47.8	(36.2-62.3)
Clark	3,449	44.8	(43.3-46.3)	47.8	(46.2-49.5)
Douglas	86	38.8	(30.6-47.0)	29.5	(23.5-37.0)
Elko	30	13.1	(8.4-17.8)	23.8	(15.3-35.9)
Esmeralda	2	---	---	---	---
Eureka	7	---	---	---	---
Humboldt	28	34.6	(21.8-47.4)	39.1	(25.6-58.3)
Lander	16	58.3	(29.7-86.8)	81.6	(44.3-140.6)
Lincoln	10	56.8	(21.6-91.9)	44.8	(21.1-86.4)
Lyon	137	69.9	(58.2-81.6)	57.3	(48.0-68.0)
Mineral	17	71.7	(37.6-105.8)	52.1	(29.4-89.2)
Nye	144	81.7	(68.4-95.1)	52.4	(43.9-62.5)
Pershing	11	40.5	(16.6-64.4)	40.5	(20.1-74.1)
Storey	2	---	---	---	---
Washoe	738	41.1	(38.1-44.1)	45.2	(41.9-48.6)
White Pine	21	55.1	(31.5-78.6)	39.0	(24.1-60.4)
Unknown	2	---	---	---	---
Total	4,842	44.3	(43.0-45.5)	46.0	(44.7-47.3)

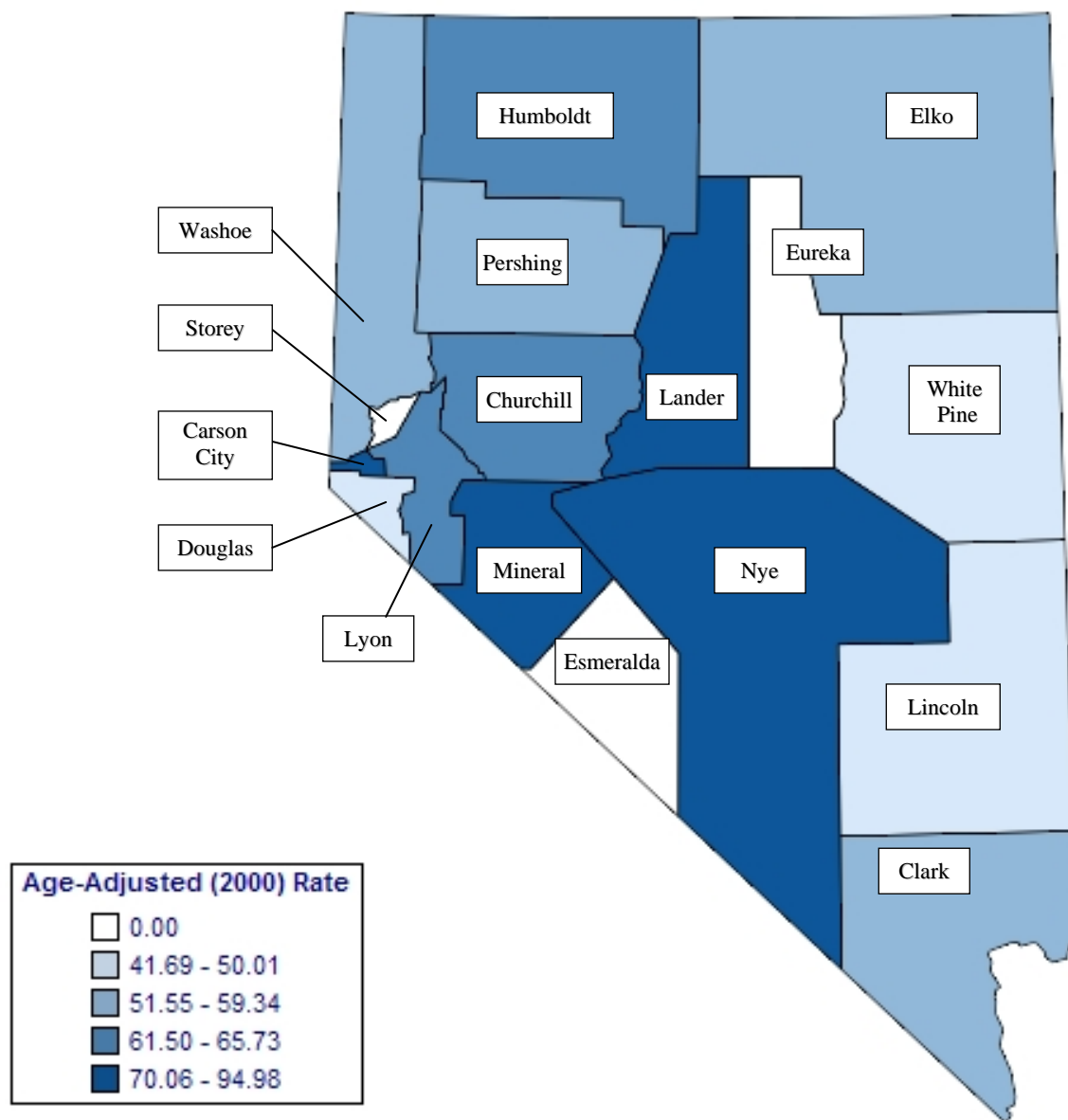
Note: The "---" is used for rates calculated on numbers less than ten. *Rates are per 100,000 population. **Rates are per 100,000 population and are age-adjusted to the 2000 US Standard population.

Table 54. Lung and Bronchus Cancer Inpatient Discharges by Age Group, Charges and Length of Stay, Nevada Residents, 2000-2004

Age Group	Discharges	Charges (\$)			Length of Stay (Days)		
		Total	Average	Median	Total	Average	Median
<1	0	---	---	---	---	---	---
1-4	0	---	---	---	---	---	---
5-14	0	---	---	---	---	---	---
15-24	6	---	---	---	---	---	---
25-34	8	---	---	---	---	---	---
35-44	95	3,517,080	37,022	33,497	652	6.9	6.0
45-54	457	19,667,064	43,035	31,511	3,721	8.1	6.0
55-64	1,268	59,528,600	46,947	34,168	10,545	8.3	6.0
65-74	1,695	79,539,882	46,926	33,468	13,566	8.0	6.0
75-84	1,173	47,474,844	40,473	30,958	8,763	7.5	6.0
85+	140	4,495,469	32,110	22,198	1,013	7.2	6.0
Unknown	0	---	---	---	---	---	---
Total	4,842	215,074,862	44,419	32,755	38,422	7.9	6.0

MORTALITY

Figure 44. Lung and Bronchus Cancer Age-Adjusted (2000) Mortality Rates, Nevada Residents, 2000-2004



Note: Rates are per 100,000 population and age-adjusted to 2000 US Standard population. Caution should be used when interpreting rates based upon small numbers. See Technical Notes for more information.

Figure 45. Lung and Bronchus Cancer Age-Adjusted Mortality Rates by County/Region of Residence, Nevada Residents, 2000-2004

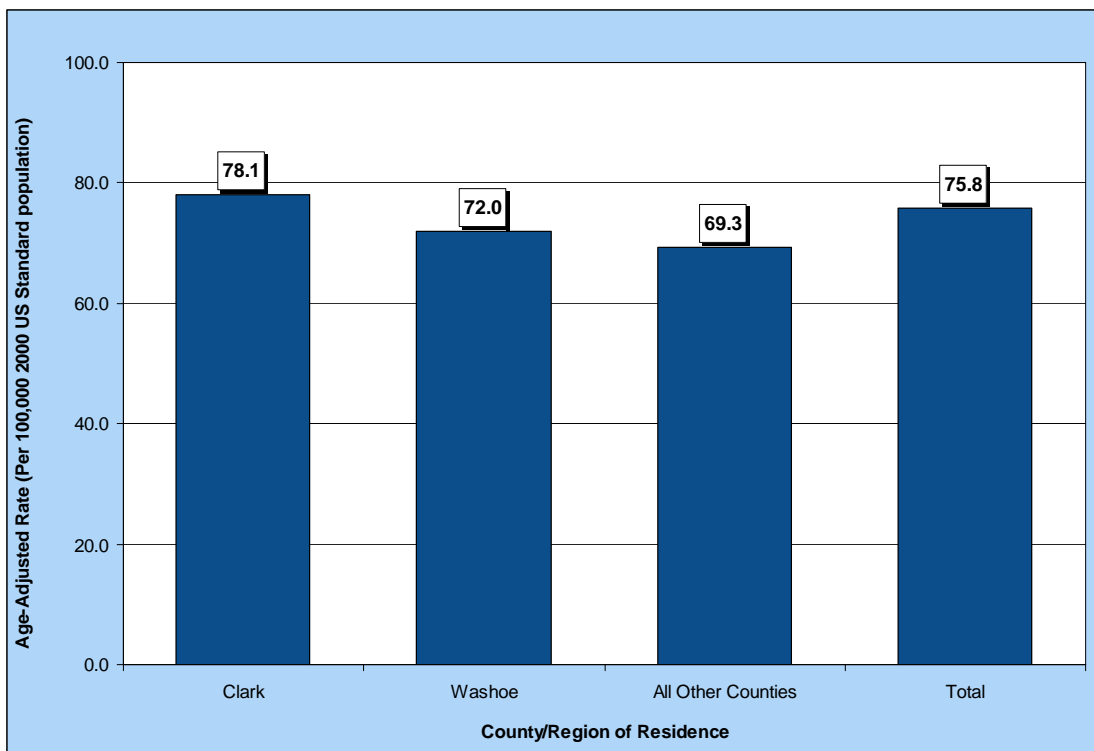


Figure 46. Lung and Bronchus Cancer Age-Adjusted Mortality Rates by Race/Ethnicity, Nevada Residents, 2000-2004

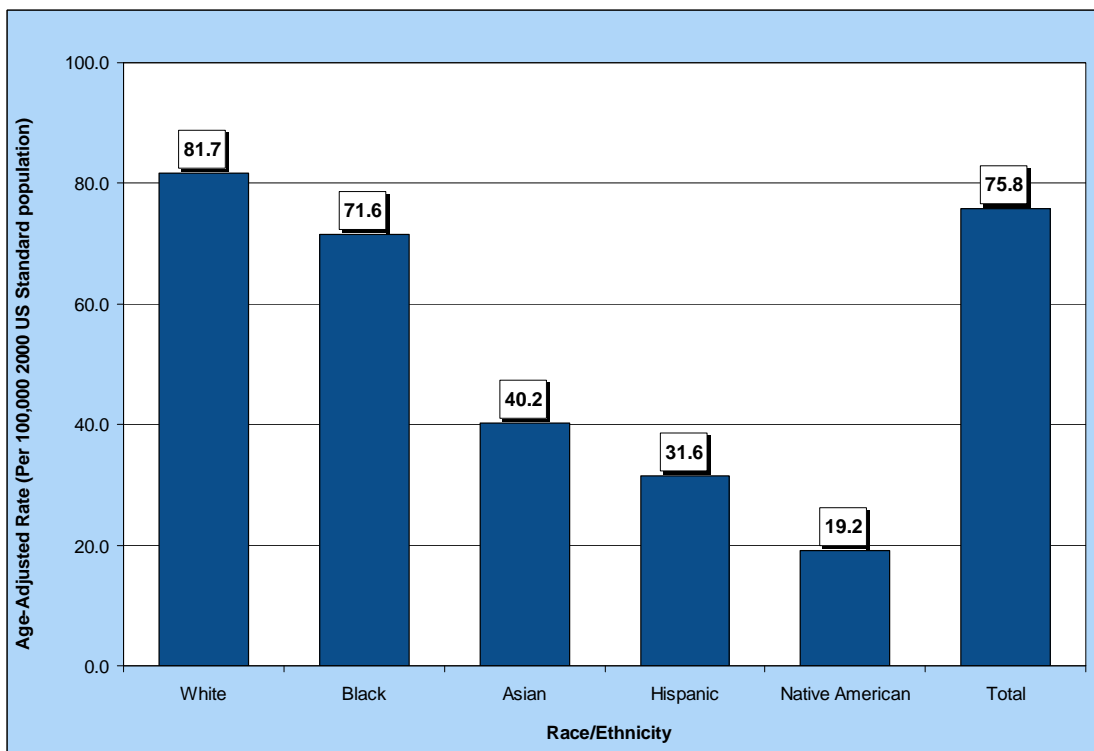


Table 55. Lung and Bronchus Cancer Mortality by Gender, Race/Ethnicity and County/Region of Residence, Nevada Residents, 2000-2004

Category	County/Region of Residence			
	Nevada Total	Clark	Washoe	All Other Counties
Total				
Mortality	6,005	4,066	943	996
Rate*	59.3	59.0	59.3	60.7
95% C.I.	(57.7-60.8)	(57.2-60.9)	(55.6-63.3)	(56.9-64.7)
Gender				
Male	3,244	2,193	497	554
Rate*	68.7	68.4	68.8	70.5
95% C.I.	(66.2-71.2)	(65.4-71.6)	(62.6-75.6)	(64.6-76.9)
Female	2,761	1,873	446	442
Rate*	51.6	51.4	52.4	52.1
95% C.I.	(49.6-53.5)	(49.1-53.8)	(47.6-57.5)	(47.3-57.2)
Other/Unknown	0	0	0	0
Race/Ethnicity				
White	5,408	3,561	880	967
Rate*	64.4	65.0	63.3	64.1
95% C.I.	(62.7-66.2)	(62.8-67.2)	(59.2-67.7)	(60.1-68.3)
Black	287	263	18	6
Rate*	55.7	55.0	67.2	---
95% C.I.	(49.1-63.2)	(48.2-62.7)	(38.3-111.9)	---
Native American	25	8	8	9
Rate*	25.2	---	---	---
95% C.I.	(16.0-38.2)	---	---	---
Asian	127	105	22	0
Rate*	27.0	27.9	31.7	---
95% C.I.	(21.8-33.8)	(21.8-36.3)	(19.3-50.3)	---
Hispanic	151	125	14	12
Rate*	24.2	27.2	12.3	17.9
95% C.I.	(19.9-29.3)	(21.9-33.7)	(6.5-22.6)	(8.5-35.5)
Other/Unknown	7	4	1	2

Note: The "---" is used for rates calculated on numbers less than ten.

*Rates are per 100,000 population and are age-adjusted to the 2000 US Standard population.

Table 56. Lung and Bronchus Cancer Mortality by Age Group and County/Region of Residence, Nevada Residents, 2000-2004

Category	County/Region of Residence			
	Nevada Total	Clark	Washoe	All Other Counties
Total				
Deaths	6,005	4,066	943	996
Rate*	59.3	59.0	59.3	60.7
95% C.I.	(57.7-60.8)	(57.2-60.9)	(55.6-63.3)	(56.9-64.7)
Age Group				
<1	0	0	0	0
Rate*	---	---	---	---
95% C.I.	---	---	---	---
1-4	0	0	0	0
Rate*	---	---	---	---
95% C.I.	---	---	---	---
5-14	0	0	0	0
Rate*	---	---	---	---
95% C.I.	---	---	---	---
15-24	1	1	0	0
Rate*	---	---	---	---
95% C.I.	---	---	---	---
25-34	6	6	0	0
Rate*	---	---	---	---
95% C.I.	---	---	---	---
35-44	69	52	9	8
Rate*	4.1	4.3	---	---
95% C.I.	(3.09-5.00)	(3.15-5.50)	---	---
45-54	418	301	68	49
Rate*	28.0	29.9	25.9	21.9
95% C.I.	(25.31-30.67)	(26.49-33.24)	(19.77-32.11)	(15.79-28.07)
55-64	1,271	843	196	232
Rate*	116.4	112.2	112.8	139.4
95% C.I.	(110.02-122.83)	(104.59-119.74)	(97.04-128.64)	(121.46-157.34)
65-74	2,135	1,457	332	346
Rate*	297.8	294.5	311.6	299.4
95% C.I.	(285.20-310.47)	(279.38-309.63)	(278.10-345.14)	(267.84-330.94)
75-84	1,734	1,144	279	311
Rate*	421.9	408.8	440.6	458.3
95% C.I.	(402.04-441.76)	(385.15-432.54)	(388.90-492.31)	(407.36-509.23)
85+	369	261	58	50
Rate*	388.4	428.7	332.2	299.8
95% C.I.	(348.74-427.99)	(376.71-480.74)	(246.73-417.73)	(216.71-382.93)
Unknown	2	1	1	0

Note: The "---" is used for rates calculated on numbers less than ten.

* Rates are per 100,000 age-specific population.

Table 57. Lung and Bronchus Cancer Mortality by County of Residence, Nevada Residents, 2000-2004

County of Residence at Diagnosis	2000-2004 Mortality				
	Cases	Rate*		Age-Adjusted Rate**	
		Rate	95% C.I.	Rate	95% C.I.
Carson City	220	86.1	(74.7-97.4)	70.1	(61.1-80.1)
Churchill	76	60.9	(47.2-74.5)	64.2	(50.5-80.9)
Clark	4,066	52.8	(51.2-54.4)	59.0	(57.2-60.9)
Douglas	129	58.2	(48.2-68.3)	44.2	(36.8-53.1)
Elko	69	30.2	(23.1-37.3)	51.5	(39.0-67.5)
Esmeralda	2	---	---	---	---
Eureka	4	---	---	---	---
Humboldt	42	51.9	(36.2-67.6)	61.5	(43.7-85.0)
Lander	17	61.9	(32.5-91.4)	95.0	(53.2-158.8)
Lincoln	12	68.1	(29.6-106.6)	50.0	(25.7-88.6)
Lyon	157	80.1	(67.6-92.7)	65.7	(55.8-77.2)
Mineral	27	113.8	(70.9-156.8)	72.2	(47.4-107.1)
Nye	196	111.2	(95.7-126.8)	70.5	(60.6-82.0)
Pershing	15	55.2	(27.3-83.2)	57.7	(32.1-96.3)
Storey	8	---	---	---	---
Washoe	943	52.5	(49.2-55.9)	59.3	(55.6-63.3)
White Pine	22	57.7	(33.6-81.8)	41.7	(26.1-63.9)
Unknown	0	---	---	---	---
Total	6,005	54.9	(53.5-56.3)	59.3	(57.7-60.8)

Note: The "---" is used for rates calculated on numbers less than ten. *Rates are per 100,000 population. **Rates are per 100,000 population and are age-adjusted to the 2000 US Standard population.

Table 58. Lung and Bronchus Cancer Mortality by Race/Ethnicity and Gender, Nevada Residents, 2000-2004

Race/Ethnicity		Gender			
		Male	Female	Other/Unknown	Total
White	Incidence	2,897	2,511	0	5,408
	Rate*	73.3	57.2	---	64.4
	95% C.I.	(70.6-76.2)	(55.0-59.5)	---	(62.7-66.2)
Black	Incidence	171	116	0	287
	Rate*	69.8	43.3	---	55.7
	95% C.I.	(58.9-83.4)	(35.6-52.5)	---	(49.1-63.2)
Native American	Incidence	15	10	0	25
	Rate*	32.6	18.9	---	25.2
	95% C.I.	(17.7-56.5)	(8.8-36.1)	---	(16.0-38.2)
Asian	Incidence	62	65	0	127
	Rate*	32.1	23.3	---	27.0
	95% C.I.	(23.4-45.1)	(17.2-32.3)	---	(21.8-33.8)
Hispanic	Incidence	96	55	0	151
	Rate*	32.5	17.2	---	24.2
	95% C.I.	(25.1-42.6)	(12.5-23.4)	---	(19.9-29.3)
Other/Unknown		3	4	0	7
Total	Incidence	3,244	2,761	0	6,005
	Rate*	68.7	51.6	---	59.3
	95% C.I.	(66.2-71.2)	(49.6-53.5)	---	(57.7-60.8)

Note: The "---" is used for rates calculated on numbers less than ten.

*Rates are per 100,000 population and are age-adjusted to the 2000 US Standard population.

Table 59. Lung and Bronchus Cancer Mortality by Age Group and Gender, Nevada Residents, 2000-2004

Age Group	Gender		
	Male	Female	Total
<1	0	0	0
Rate*	---	---	---
95% C.I.	---	---	---
1-4	0	0	0
Rate*	---	---	---
95% C.I.	---	---	---
5-14	0	0	0
Rate*	---	---	---
95% C.I.	---	---	---
15-24	0	1	1
Rate*	---	---	---
95% C.I.	---	---	---
25-34	2	4	6
Rate*	---	---	---
95% C.I.	---	---	---
35-44	36	33	69
Rate*	4.07	4.02	4.05
95% C.I.	(2.74-5.40)	(2.65-5.40)	(3.09-5.00)
45-54	223	195	418
Rate*	29.46	26.48	27.99
95% C.I.	(25.59-33.33)	(22.76-30.20)	(25.31-30.67)
55-64	691	580	1,271
Rate*	128.39	104.79	116.43
95% C.I.	(118.82-137.96)	(96.26-113.32)	(110.02-122.83)
65-74	1,226	909	2,135
Rate*	346.99	250.06	297.84
95% C.I.	(327.57-366.42)	(233.80-266.32)	(285.20-310.47)
75-84	894	840	1,734
Rate*	481.51	372.79	421.90
95% C.I.	(449.95-513.08)	(347.58-398.00)	(402.04-441.76)
85+	170	199	369
Rate*	535.15	314.65	388.37
95% C.I.	(454.70-615.59)	(270.93-358.36)	(348.74-427.99)
Unknown	2	0	2
Total	3,244	2,761	6,005
Rate*	58.36	51.29	54.88
95% C.I.	(56.3-60.4)	(49.4-53.2)	(53.5-56.3)

Note: The "---" is used for rates calculated on numbers less than ten.

* Rates are per 100,000 age-specific population.

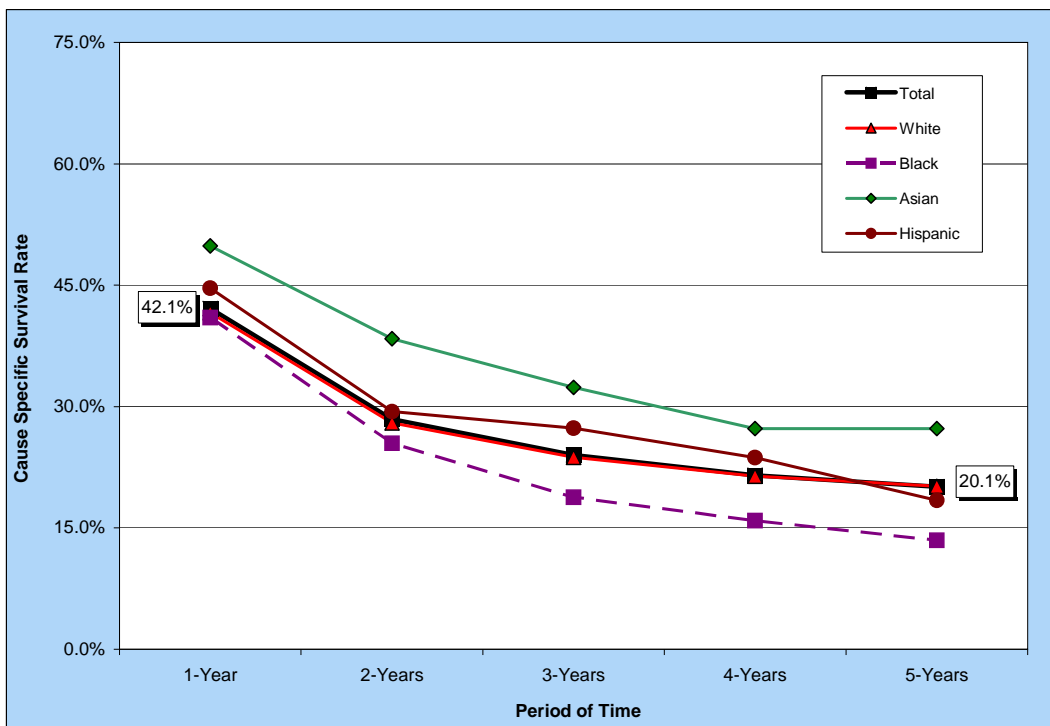
Table 60. Median Age at Death from Lung and Bronchus Cancer by Race/Ethnicity and Gender, Nevada Residents, 2000-2004

Race/Ethnicity	Gender					
	Male		Female		Total	
	Cases	Median Age	Cases	Median Age	Cases	Median Age
White	2,896	70.0	2,511	71.0	5,407	71.0
Black	170	66.0	116	68.5	286	67.0
Native American	15	70.0	10	68.5	25	69.0
Asian	62	68.5	65	66.0	127	67.0
Hispanic	96	69.0	55	71.0	151	70.0
Other/Unknown	3	---	4	---	7	67.0
Total	3,242	70.0	2,761	71.0	6,003	70.0

Note: Those cases of other/unknown gender and/or unknown ages are not included in this table. The median age was not calculated for those numbers less than five.

SURVIVAL RATE

Figure 47. Survival Rates for Lung and Bronchus Cancer by Race/Ethnicity, Nevada Residents, 2000-2004



Notes: The survival rate for those racial/ethnic groups not included in this chart could not be calculated due to small cell size.

Figure 48. Survival Rates for Lung and Bronchus Cancer by Stage of Cancer at Diagnosis, Nevada Residents, 2000-2004

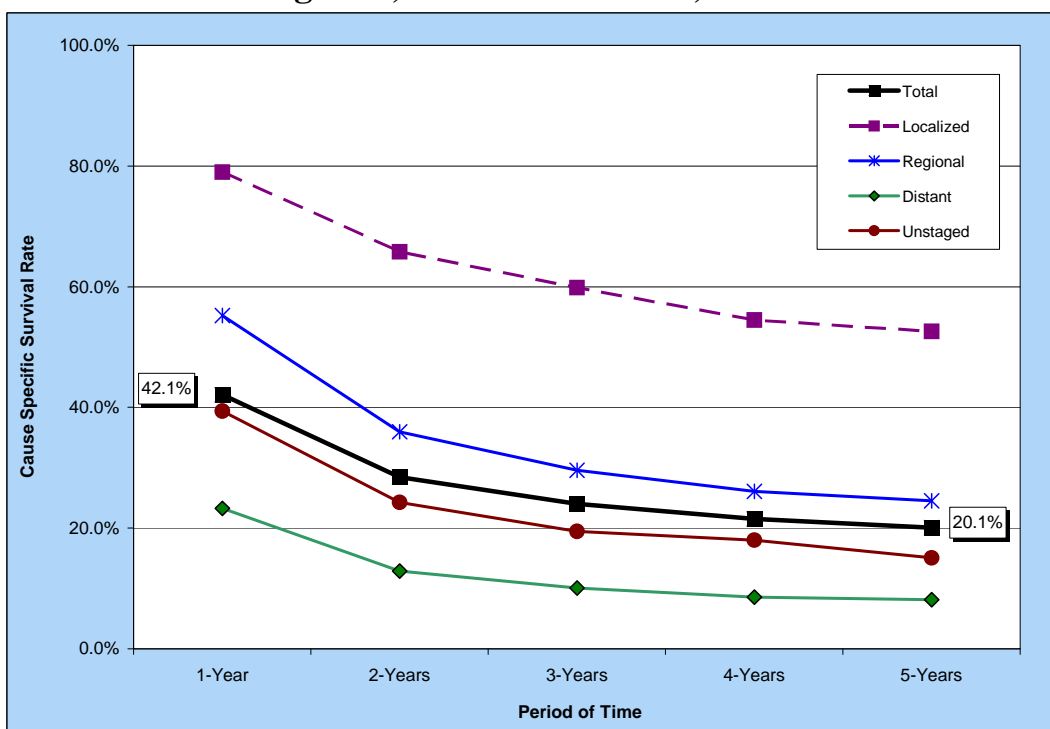


Table 61. Cause-Specific Survival Rates for Lung and Bronchus Cancer by Race/Ethnicity and Gender, Nevada Residents, 2000-2004

Race/ Ethnicity and Gender	Number of Cases	Cause Specific Survival Rate					Median Survival Time (years)
		One Year	Two Years	Three Years	Four Years	Five Years	
Total	6,194	42.1%	28.4%	24.0%	21.5%	20.1%	0.86
Male	3,260	39.6%	25.8%	21.8%	19.3%	18.0%	0.83
Female	2,934	44.9%	31.4%	26.5%	24.1%	22.4%	0.91
Race/Ethnicity							
White	5,470	41.6%	28.0%	23.7%	21.4%	20.1%	0.86
Male	2,844	39.4%	25.4%	21.6%	19.2%	18.2%	0.82
Female	2,626	44.1%	30.8%	26.1%	23.8%	22.3%	0.89
Black	310	41.0%	25.5%	18.8%	15.9%	13.5%	0.85
Male	174	37.4%	23.2%	17.8%	14.3%	9.5%	0.80
Female	136	45.7%	28.4%	20.1%	18.0%	18.0%	0.92
Native American	3	---	---	---	---	---	.
Male	2	---	---	---	---	---	.
Female	1	---	---	---	---	---	.
Asian	174	49.8%	38.4%	32.4%	27.3%	27.3%	1.00
Male	100	44.6%	35.2%	31.0%	25.4%	25.4%	0.90
Female	74	57.0%	42.8%	34.2%	29.9%	29.9%	1.49
Hispanic	176	44.6%	29.4%	27.3%	23.7%	18.4%	0.90
Male	106	38.7%	23.2%	21.5%	18.4%	18.4%	0.82
Female	70	53.3%	38.1%	35.5%	31.1%	20.7%	1.22

Notes: 1) The "---" indicates that survival rate could not be calculated due to small cell size. Caution should be used when interpreting survival rates based upon categories with a small number of cases. 2) Those cases where the gender and/or race/ethnicity were other/unknown, are not shown separately, but are included in the category totals. 3) These rates may not be directly comparable to national rates because of different methodologies. Caution should be used when trying to compare rates for Nevada and the nation. For more information on the calculation of survival rates, please refer to Technical Notes section.

Table 62. Cause-Specific Survival Rates for Lung and Bronchus Cancer by Stage of Cancer at Diagnosis and Gender, Nevada Residents, 2000-2004

Survival Rate of Stage at Diagnosis		Gender		
		Total	Male	Female
Total	Cases	6,194	3,260	2,934
	One Year	42.1%	39.6%	44.9%
	5 Years	20.1%	18.0%	22.4%
	Median Survival	0.86	0.83	0.91
Stage at Diagnosis				
In situ	Cases	---	---	---
	One Year	---	---	---
	5 Years	---	---	---
	Median Survival	---	---	---
Localized	Cases	858	421	437
	One Year	79.0%	75.9%	81.9%
	5 Years	52.6%	48.9%	56.2%
	Median Survival	> 5 YEARS	3.76	> 5 YEARS
Regional	Cases	1,096	593	503
	One Year	55.3%	53.3%	57.6%
	5 Years	24.5%	22.2%	27.3%
	Median Survival	1.27	1.16	1.42
Distant	Cases	2,134	1,179	955
	One Year	23.3%	21.4%	25.6%
	5 Years	8.1%	7.2%	9.3%
	Median Survival	0.65	0.64	0.67
Unstaged	Cases	2,106	1,067	1,039
	One Year	39.4%	38.2%	40.7%
	5 Years	15.1%	14.1%	16.0%
	Median Survival	0.83	0.81	0.84

Notes: 1) The "---" indicates that survival rate could not be calculated due to small cell size. Caution should be used when interpreting survival rates based upon categories with a small number of cases. 2) These rates may not be directly comparable to national rates because of different methodologies. Caution should be used when trying to compare rates for Nevada and the nation. For more information on the calculation of survival rates, please refer to Technical Notes section.