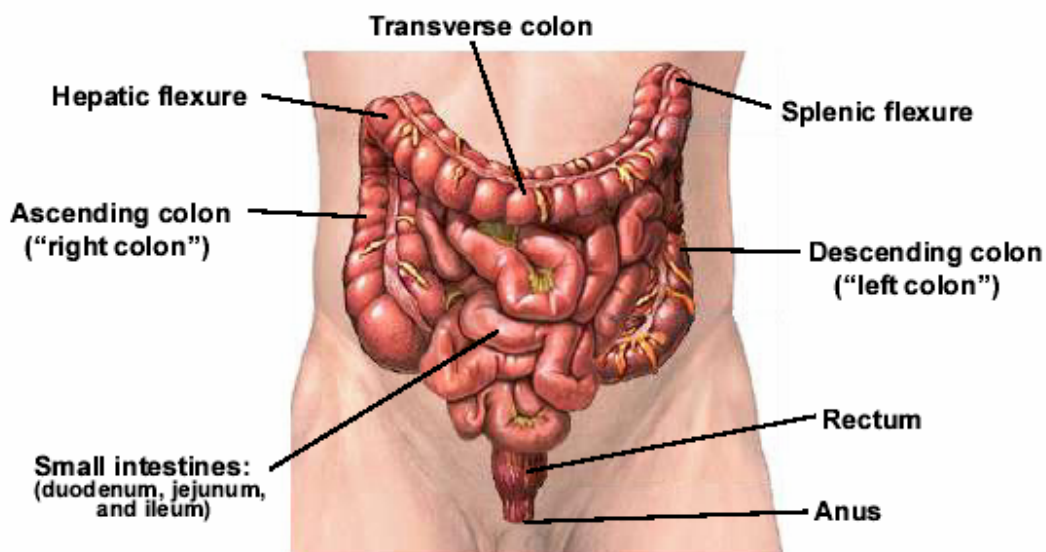


# **COLORECTAL CANCER**

## COLORECTAL CANCER

### GENERAL PROFILE<sup>4</sup>

Figure 75. Anatomy of the Digestive System<sup>5</sup>



**General Anatomy:** The colon and rectum are parts of the body's digestive system, which removes nutrients from food and stores waste until it passes out of the body. Together, the colon and rectum form a long, muscular tube called the large intestine (also called the large bowel). The colon is the first 6 feet of the large intestine, and the rectum is the last 8 to 10 inches.

**Risk Factors:** Age, diet, polyps (benign growths on the inner wall of the colon and rectum), personal medical history, family medical history, and ulcerative colitis (the lining of the colon becomes inflamed).

**Signs and Symptoms:** A change in bowel habits, diarrhea, constipation, or feeling that the bowel does not empty completely, blood (either bright red or very dark) in the stool, stools that are narrower than usual, general abdominal discomfort (frequent gas pains, bloating, fullness, and/or cramps), weight loss with no known reason, constant tiredness, and vomiting.

**Diagnosing the Cancer:** Fecal occult blood test, sigmoidoscopy, colonoscopy, double contrast barium enema (DCBE), polypectomy, biopsy, and a digital rectal exam.

**Treatment:** Treatment options include: surgery (Colostomy), chemotherapy, radiation therapy, biological therapy, and clinical trials.

## **HIGHLIGHTS**

- The ratio of the age-adjusted incidence rate, 51.4, to the age-adjusted mortality rate, 21.4 (per 100,000 – 2000 US Standard population), for Colorectal Cancer was 2.4 during the 2000 to 2004 period, which means that for every 241 Colorectal Cancer cases there was 100 deaths due to Colorectal Cancer in Nevada during this period.
- Nevadan females had a higher ratio (2.52) than males (2.28) when the incidence and mortality age-adjusted rates for Colorectal Cancer were compared. Females had a ratio of 2.52 while the ratio for males was 2.28. This means that for every 100 deaths due to Colorectal Cancer there would be 252 female cases while only 228 cases for every male death.
- The median age at diagnosis of Colorectal Cancer for Nevadans was 69 years of age from 2000 to 2004. The median age at time of death due to Colorectal Cancer during this period was 73 years.

## **CANCER SCREENING**

- Of the 2,188 people surveyed in Nevada during the 2001, 2002 and 2004 period, 43.7% responded No to ever having a blood stool test and/or a sigmoidoscopy or colonoscopy to try and detect early signs of Colorectal Cancer.
- Males had a slightly higher percentage of respondents who said yes to ever having a blood stool test and/or a sigmoidoscopy or colonoscopy than females (56.0%) with a percentage of 56.7% when the questions were asked in 2001, 2002 and 2004.
- Each age group showed statistical significance over the next age group for those respondents who said that they had never had a blood stool test and/or a sigmoidoscopy or colonoscopy, with the 45 to 54 age group having the highest percentage at 38.5% (32.5-44.6); being followed by the 55 to 64 and 65 and older age groups with percentages of 56.0% (52.3-59.6) and 66.9% (63.6-70.2), respectively, when these questions were included in the Behavioral Risk Factor Surveillance Survey.

## **INCIDENCE**

- Nevada's incidence rate for Colorectal Cancer 51.4 was slightly lower than the national rate of 53.1 (per 100,000 – 2000 US Standard population) from 2000 to 2004.
- There were 5,173 cases of Colorectal Cancer reported in Nevada from 2000 to 2004. Regional comparisons showed that Clark County's age-adjusted incidence rate, 52.7 (49.1-56.5), was only slightly higher than the rate for Nevada as a whole 51.4 (50.0-52.9), Washoe County 52.7 (49.1-56.5) and the All Other Counties region 44.3 (41.1-47.8) during this period.
- Nevada's cancer incidence rate for Males diagnosed with Colorectal Cancer (58.9) was

lower than the 2000-2004 national rate of 60.8 (per 100,000 – 2000 US Standard population) from 2000 to 2004, while Nevada’s female population had an age-adjusted incidence rate (44.8) that was only slightly above the rate for their national counterparts (44.6) during this period.

- The Colorectal Cancer age-adjusted incidence rates for Blacks, 56.0 (49.5-63.4), and Whites, 53.5 (51.9-55.1), showed statistical significance over all other racial/ethnic groups from 2000 to 2004. They were followed by Asians, Hispanics and Native Americans with rates of 43.1 (35.7-52.2), 29.1 (24.6-34.5) and 15.7 (9.0-26.2), respectively.

### **INPATIENT HOSPITAL DISCHARGES**

- There were 4,433 Inpatient Discharges for Colorectal Cancer to Nevada residents in Nevada from 2000 to 2004. Washoe County (45.5) had the highest age-adjusted inpatient discharge rate for Colorectal Cancer in Nevada, followed by Clark County, Nevada Overall, and All Other Counties who had rates of 45.0, 44.1 and 38.5 (per 100,000 – 2000 US Standard population), respectively.
- Total billed charges for Colorectal Cancer inpatient hospital discharges in Nevada totaled 219.1 million dollars from 2000 to 2004. The overall average billed charge per day for a hospital inpatient discharge due to Colorectal Cancer was approximately \$5,755 in Nevada during this period.
- Washoe County had the highest median total billed amount (\$36,788) and average length of stay (9.1 days) during the 2000 to 2004 period, once regional comparisons were made.

### **MORTALITY**

- There were 2,030 resident deaths due to Colorectal Cancer in Nevada from 2000 to 2004. Males had a higher statistically significant age-adjusted mortality rate, 25.8 (24.2-27.5), than females who had a rate of 17.8 (per 100,000 – 2000 US Standard population), during this period.
- Racial/ethnic comparisons showed that Blacks and Whites had higher age-adjusted mortality rates for Colorectal Cancer 27.8 and 22.1, respectively, when compared to Asians and Hispanics who had rates of 14.6 and 14.1 (per 100,000 – 2000 US Standard population), respectively, from 2000 to 2004.

### **SURVIVAL RATE**

- The one-year survival rate for Colorectal cancer in Nevada was 79.0% during the 2000 to 2004 period, while the five-year survival rate was 55.3% during this same time. The median survival rate in Nevada was greater than five years during this period.
- Females had a slightly higher one-year survival rate (79.4%) than males (78.7%) for Colorectal Cancer in Nevada from 2000 to 2004. This difference maintained out to the

five-year survival rate where females had a higher rate at 56.5% and males with a rate of 54.3% during this period.

- The five-year survival rate for those diagnosed with Colorectal Cancer at the localized stage was 92.7% for Nevada from 2000 to 2004, while those recorded at the regional, distant and unstaged stages had rates of 69.2%, 34.7% and 11.2%, respectively.

**SCREENING (BRFSS)**

**Table 107. Colorectal Cancer Screening by County/Region of Residence, Gender, Education, Age Group, and Income, Nevada Residents, 2001 and 2002 and 2004**

Responses	Answers						Total
	Yes			No			
	Number	Percent*	95% C.I.	Number	Percent*	95% C.I.	
<b>Total</b>							
Responses	2,188	56.3%	(54.0-58.6)	1,678	43.7%	(41.4-46.0)	3,866
<b>County/Region of Residence</b>							
Clark County	695	56.5%	(53.2-59.8)	533	43.5%	(40.2-46.8)	1,228
Washoe County	717	57.5%	(54.3-60.6)	483	42.5%	(39.4-45.7)	1,200
All Other Counties	776	54.4%	(51.3-57.4)	662	45.6%	(42.6-48.7)	1,438
<b>Gender</b>							
Male	1,061	56.7%	(53.2-60.1)	843	43.3%	(39.9-46.8)	1,904
Female	1,127	56.0%	(52.8-59.1)	835	44.0%	(40.9-47.2)	1,962
<b>Education</b>							
Less than High School	153	41.9%	(34.0-49.8)	180	58.1%	(50.2-66.0)	333
High School	577	52.4%	(48.2-56.5)	538	47.6%	(43.5-51.8)	1,115
Some Post High School	695	56.1%	(52.2-60.0)	514	43.9%	(40.0-47.8)	1,209
College Graduate	758	64.8%	(60.6-69.0)	440	35.2%	(31.0-39.4)	1,198
<b>Age Group</b>							
18-24 years old	---	---	---	---	---	---	---
25-34 years old	---	---	---	---	---	---	---
35-44 years old	---	---	---	---	---	---	---
45-54 years old	329	38.5%	(32.5-44.6)	513	61.5%	(55.4-67.5)	842
55-64 years old	760	56.0%	(52.3-59.6)	608	44.0%	(40.4-47.7)	1,368
65+ years old	1,099	66.9%	(63.6-70.2)	557	33.1%	(29.8-36.4)	1,656
<b>Income</b>							
Less than \$15,000	167	42.5%	(35.1-50.0)	194	57.5%	(50.0-64.9)	361
\$15,000-\$24,999	293	49.5%	(43.5-55.4)	263	50.5%	(44.6-56.5)	556
\$25,000-\$34,999	271	53.3%	(47.1-59.6)	216	46.7%	(40.4-52.9)	487
\$35,000-\$49,999	350	59.0%	(53.6-64.4)	262	41.0%	(35.6-46.4)	612
\$50,000 or More	735	57.7%	(53.8-61.6)	507	42.3%	(38.4-46.2)	1,242

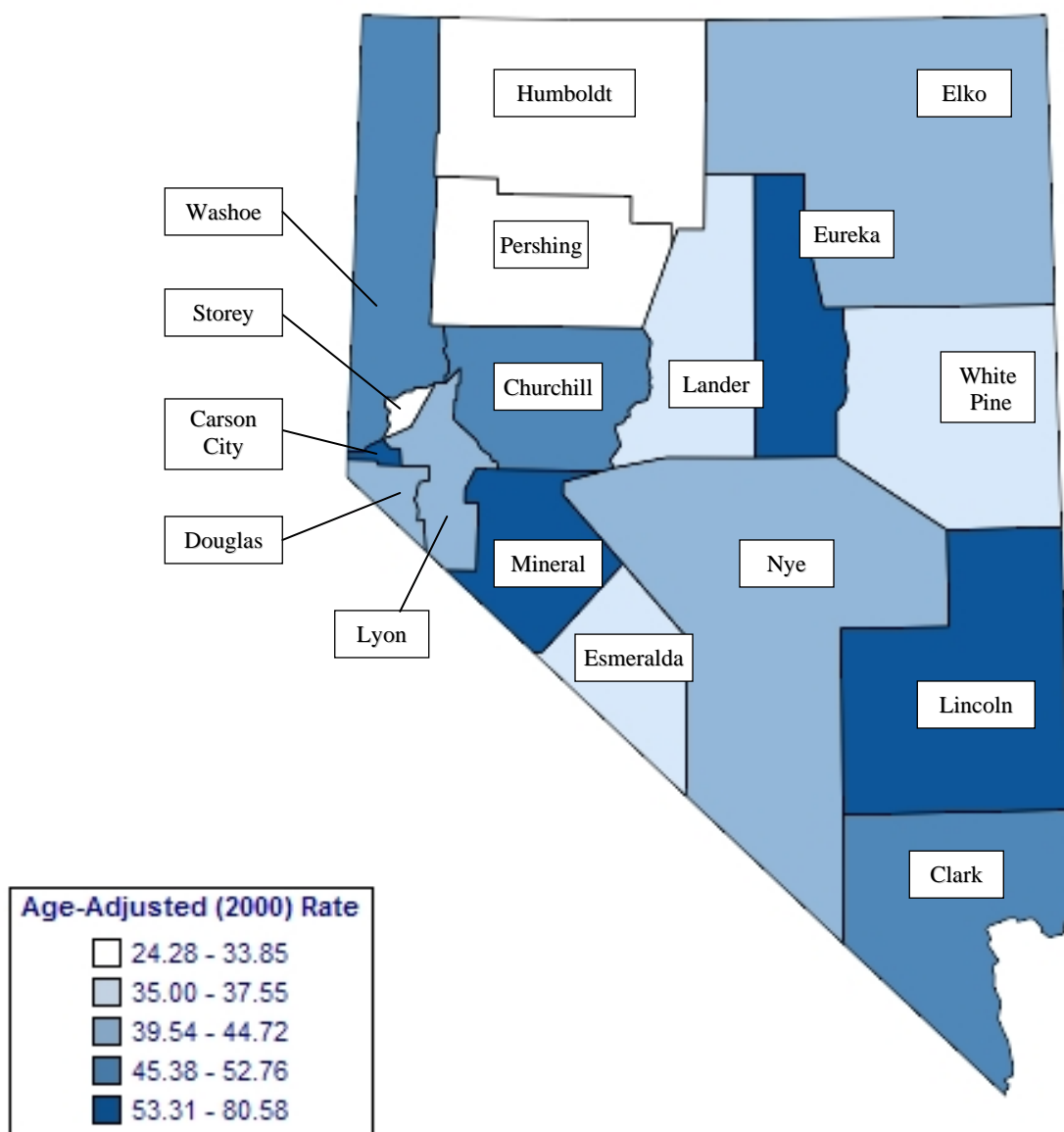
\*Denominator is persons age 50-65+ and excludes missing, don't know, and refused responses.

Note: This table includes those respondents who answered "Yes" or "No" to either of the following questions:

- 1) A blood stool test is a test that may use a special kit at home to determine whether the stool contains blood. Have you ever had this test using a home kit?
- 2) A sigmoidoscopy or colonoscopy is when a tube is inserted in the rectum to view the bowel for signs of cancer and other health problems. Have you ever had this exam?

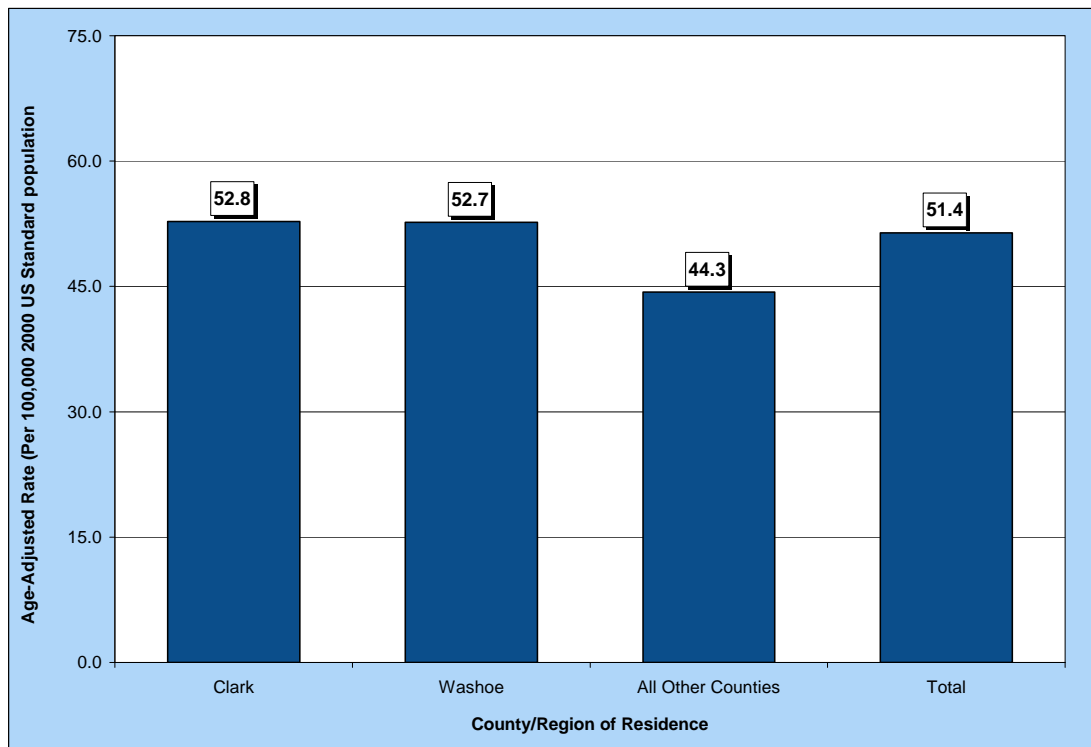
## INCIDENCE

**Figure 76. Colorectal Cancer Age-Adjusted (2000) Incidence Rates, Nevada Residents, 2000-2004**

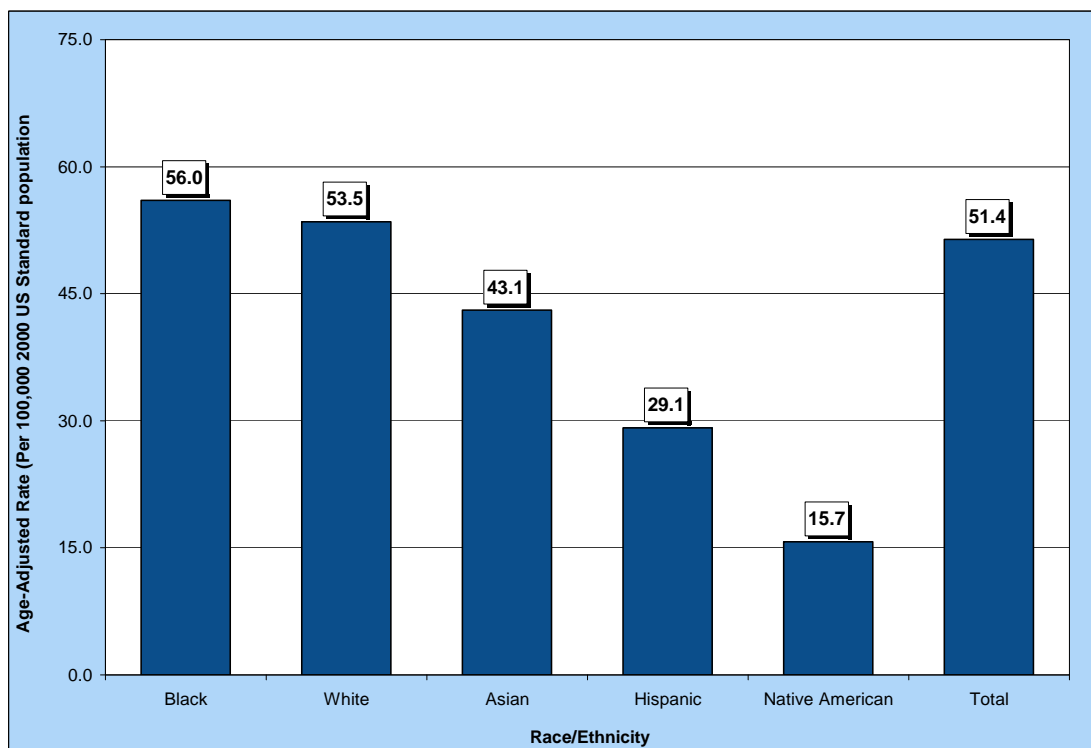


Note: Rates are per 100,000 population and age-adjusted to 2000 US Standard population. Caution should be used when interpreting rates based upon small numbers. See Technical Notes for more information.

**Figure 77. Colorectal Cancer Age-Adjusted Incidence Rates by County/Region of Residence, Nevada Residents, 2000-2004**



**Figure 78. Colorectal Cancer Age-Adjusted Incidence Rates by Race/Ethnicity, Nevada Residents, 2000-2004**





**Table 108. Colorectal Cancer Cases by Gender, Race/Ethnicity and County/Region of Residence at Diagnosis, Nevada Residents (2000-2004) and SEER-17 (2000-2004)**

Category	County/Region of Residence					
	Nevada Total	Clark	Washoe	All Other Counties	Unknown	SEER 17 (2000-2004)
<b>Total</b>						
Cases	5,173	3,628	832	710	3	187,391
Rate*	51.4	52.8	52.7	44.3	---	53.1
95% C.I.	(50.0-52.9)	(51.0-54.6)	(49.1-56.5)	(41.1-47.8)	---	(52.9-53.4)
<b>Gender</b>						
Male	2,810	1,979	438	393	0	94,459
Rate*	58.9	60.8	60.1	50.6	---	62.1
95% C.I.	(56.6-61.3)	(58.0-63.8)	(54.4-66.5)	(45.5-56.1)	---	(61.7-62.5)
Female	2,363	1,649	394	317	3	92,932
Rate*	44.8	45.9	46.3	38.4	---	46.2
95% C.I.	(43.0-46.7)	(43.6-48.2)	(41.9-51.2)	(34.2-42.9)	---	(45.9-46.5)
Other/Unknown	0	0	0	0	0	0
<b>Race/Ethnicity</b>						
White	4,401	2,950	777	673	1	155,076
Rate*	53.5	54.7	56.5	46.1	---	52.8
95% C.I.	(51.9-55.1)	(52.7-56.7)	(52.6-60.7)	(42.6-49.8)	---	(52.6-53.1)
Black	296	282	11	2	1	18,551
Rate*	56.0	57.8	35.9	---	---	63.6
95% C.I.	(49.5-63.4)	(50.8-65.7)	(17.3-70.1)	---	---	(62.7-64.6)
Native American	18	3	2	12	1	849
Rate*	15.7	---	---	27.1	---	28.8
95% C.I.	(9.0-26.2)	---	---	(13.8-49.6)	---	(26.8-26.8)
Asian	184	153	26	5	0	11,668
Rate*	43.1	45.4	43.2	---	---	42.1
95% C.I.	(35.7-52.2)	(36.4-56.8)	(26.2-73.5)	---	---	(41.3-42.9)
Hispanic	214	190	12	12	0	14,046
Rate*	29.1	33.1	12.1	20.5	---	40.4
95% C.I.	(24.6-34.5)	(27.6-39.8)	(5.9-22.9)	(9.7-40.1)	---	(39.7-41.1)
Other/Unknown	60	50	4	6	0	1,247

\* Rates are per 100,000 population and age-adjusted to the 2000 US Standard population.

Note: The "---" is used for rates calculated on numbers less than ten and SEER numbers less than five. Caution should be used when comparing rates for racial/ethnic groups to the national (SEER) rates. See Technical Notes for more information.

**Table 109. Colorectal Cancer Cases by Age Group and County/Region of Residence at Diagnosis, Nevada Residents (2000-2004) and SEER-17 (2000-2004)**

Category	County/Region of Residence					SEER 17 (2000-2004)
	Nevada Total	Clark	Washoe	All Other Counties	Unknown	
<b>Total</b>						
<b>Cases</b>	5,173	3,628	832	710	3	187,391
<b>Rate*</b>	51.4	52.8	52.7	44.3	---	53.1
<b>95% C.I.</b>	(50.0-52.9)	(51.0-54.6)	(49.1-56.5)	(41.1-47.8)	---	(52.9-53.4)
<b>Age Group</b>						
<1	0	0	0	0	0	1
Rate*	---	---	---	---	---	0.0
95% C.I.	---	---	---	---	---	(0.0-0.1)
1-4	0	0	0	0	0	1
Rate*	---	---	---	---	---	0.0
95% C.I.	---	---	---	---	---	(0.0-0.0)
5-14	1	0	1	0	0	17
Rate*	---	---	---	---	---	0.0
95% C.I.	---	---	---	---	---	(0.0-0.1)
15-24	5	4	1	0	0	279
Rate*	---	---	---	---	---	0.5
95% C.I.	---	---	---	---	---	(0.5-0.6)
25-34	42	30	11	1	0	1,634
Rate*	2.6	2.5	4.2	---	---	3.0
95% C.I.	(1.81-3.38)	(1.61-3.40)	(1.73-6.75)	---	---	(2.9-3.2)
35-44	168	125	19	24	0	7,166
Rate*	9.9	10.4	6.7	11.0	---	12.0
95% C.I.	(8.36-11.34)	(8.58-12.23)	(3.67-9.65)	(6.59-15.39)	---	(11.7-12.3)
45-54	563	399	89	74	1	21,470
Rate*	37.7	39.6	34.0	33.1	---	41.4
95% C.I.	(34.59-40.82)	(35.71-43.48)	(26.90-41.00)	(25.57-40.67)	---	(40.9-42.0)
55-64	1,080	776	169	134	1	33,445
Rate*	98.9	103.3	97.3	80.5	---	101.4
95% C.I.	(93.03-104.83)	(95.99-110.52)	(82.63-111.97)	(66.88-94.15)	---	(100.3-102.5)
65-74	1,539	1,074	226	239	0	47,795
Rate*	214.7	217.1	212.1	206.8	---	219.2
95% C.I.	(203.97-225.42)	(204.11-230.07)	(184.47-239.78)	(180.58-233.02)	---	(217.2-221.2)
75-84	1,375	961	235	179	0	52,947
Rate*	334.6	343.4	371.1	263.8	---	343.8
95% C.I.	(316.87-352.24)	(321.73-365.16)	(323.67-418.57)	(225.14-302.42)	---	(340.9-346.8)
85+	400	259	81	59	1	22,636
Rate*	421.0	425.4	464.0	353.8	---	409.7
95% C.I.	(379.74-462.25)	(373.63-477.25)	(362.93-565.02)	(263.51-444.06)	---	(404.3-415.0)
Unknown	0	0	0	0	0	0

\* Rates are per 100,000 age-specific population.

Note: The "---" is used for rates calculated on numbers less than ten and SEER numbers less than five. See Technical Notes for more information.

**Table 110. Colorectal Cancer Cases by County of Residence at Diagnosis, Nevada Residents, 2000-2004**

County of Residence at Diagnosis	2000-2004 Incidence				
	Cases	Rate*		Age-Adjusted Rate**	
		Rate	95% C.I.	Rate	95% C.I.
Carson City	162	63.4	(53.6-73.1)	53.3	(45.4-62.4)
Churchill	54	43.2	(31.7-54.8)	45.4	(34.0-59.7)
Clark	3,628	47.1	(45.6-48.7)	52.8	(51.0-54.6)
Douglas	110	49.6	(40.4-58.9)	39.5	(32.3-48.2)
Elko	58	25.4	(18.9-31.9)	41.6	(30.5-56.1)
Esmeralda	2	---	---	---	---
Eureka	4	---	---	---	---
Humboldt	23	28.4	(16.8-40.0)	33.8	(21.0-52.6)
Lander	9	---	---	---	---
Lincoln	16	90.8	(46.3-135.3)	74.0	(42.1-123.2)
Lyon	95	48.5	(38.7-58.2)	41.9	(33.8-51.5)
Mineral	27	113.8	(70.9-156.8)	80.6	(52.4-122.3)
Nye	119	67.5	(55.4-79.7)	44.7	(36.7-54.7)
Pershing	6	---	---	---	---
Storey	7	---	---	---	---
Washoe	832	46.3	(43.2-49.5)	52.7	(49.1-56.5)
White Pine	18	47.2	(25.4-69.0)	35.0	(20.5-58.0)
Unknown	3	---	---	---	---
<b>Total</b>	<b>5,173</b>	<b>47.3</b>	<b>(46.0-48.6)</b>	<b>51.4</b>	<b>(50.0-52.9)</b>

Note: The "---" is used for rates calculated on numbers less than ten. \*Rates are per 100,000 population. \*\*Rates are per 100,000 population and are age-adjusted to the 2000 US Standard population.

**Table 111. Colorectal Cancer Cases by Race/Ethnicity and Gender, Nevada Residents, 2000-2004**

Race/Ethnicity	Gender				
	Male	Female	Other/Unknown	Total	
White	Incidence	2,400	2,001	0	4,401
	Rate*	60.9	46.8	---	53.5
	95% C.I.	(58.3-63.5)	(44.7-48.9)	---	(51.9-55.1)
Black	Incidence	162	134	0	296
	Rate*	67.7	47.6	---	56.0
	95% C.I.	(56.3-81.9)	(39.6-57.0)	---	(49.5-63.4)
Native American	Incidence	6	12	0	18
	Rate*	---	17.9	---	15.7
	95% C.I.	---	(8.9-33.6)	---	(9.0-26.2)
Asian	Incidence	88	96	0	184
	Rate*	49.6	38.6	---	43.1
	95% C.I.	(37.4-66.2)	(29.6-50.5)	---	(35.7-52.2)
Hispanic	Incidence	121	93	0	214
	Rate*	35.4	24.4	---	29.1
	95% C.I.	(27.5-45.9)	(19.0-31.1)	---	(24.6-34.5)
Other/Unknown	33	27	0	60	
Total	Incidence	2,810	2,363	0	5,173
	Rate*	58.9	44.8	---	51.4
	95% C.I.	(56.6-61.3)	(43.0-46.7)	---	(50.0-52.9)

Note: The "---" is used for rates calculated on numbers less than ten. \*Rates are per 100,000 population and are age-adjusted to the 2000 US Standard population.

**Table 112. Colorectal Cancer Cases by Age Group and Gender, Nevada Residents, 2000-2004**

Age Group	Gender			
	Male	Female	Unknown	Total
<1	0	0	0	0
Rate*	---	---	---	---
95% C.I.	---	---	---	---
1-4	0	0	0	0
Rate*	---	---	---	---
95% C.I.	---	---	---	---
5-14	0	1	0	1
Rate*	---	---	---	---
95% C.I.	---	---	---	---
15-24	3	2	0	5
Rate*	---	---	---	---
95% C.I.	---	---	---	---
25-34	18	24	0	42
Rate*	2.13	3.10	---	2.59
95% C.I.	(1.15-3.12)	(1.86-4.33)	---	(1.81-3.38)
35-44	90	78	0	168
Rate*	10.17	9.51	---	9.85
95% C.I.	(8.07-12.27)	(7.40-11.62)	---	(8.36-11.34)
45-54	291	272	0	563
Rate*	38.45	36.94	---	37.70
95% C.I.	(34.03-42.86)	(32.55-41.33)	---	(34.59-40.82)
55-64	666	414	0	1,080
Rate*	123.74	74.80	---	98.93
95% C.I.	(114.35-133.14)	(67.59-82.01)	---	(93.03-104.83)
65-74	895	644	0	1,539
Rate*	253.31	177.16	---	214.69
95% C.I.	(236.72-269.91)	(163.48-190.84)	---	(203.97-225.42)
75-84	695	680	0	1,375
Rate*	374.33	301.78	---	334.55
95% C.I.	(346.50-402.16)	(279.10-324.46)	---	(316.87-352.24)
85+	152	248	0	400
Rate*	478.48	392.12	---	421.00
95% C.I.	(402.42-554.55)	(343.32-440.92)	---	(379.74-462.25)
Unknown	0	0	0	0
Total	2,810	2,363	0	5,173
Rate*	50.55	43.90	---	47.28
95% C.I.	(48.7-52.4)	(42.1-45.7)	---	(46.0-48.6)

Note: The "---" is used for rates calculated on numbers less than ten.

\* Rates are per 100,000 age-specific population.

**Table 113. Colorectal Cancer Cases by Age Group and Stage, Nevada Residents, 2000-2004**

Age Group		Stage					Total
		In situ	Localized	Regional	Distant	Unstaged	
<1	Number	---	0	0	0	0	0
	Percent	---	---	---	---	---	---
1-4	Number	---	0	0	0	0	0
	Percent	---	---	---	---	---	---
5-14	Number	---	0	1	0	0	1
	Percent	---	---	100.0%	---	---	100.0%
15-24	Number	---	0	2	2	1	5
	Percent	---	---	40.0%	40.0%	20.0%	100.0%
25-34	Number	---	12	16	1	13	42
	Percent	---	28.6%	38.1%	2.4%	31.0%	100.0%
35-44	Number	---	42	67	28	31	168
	Percent	---	25.0%	39.9%	16.7%	18.5%	100.0%
45-54	Number	---	157	188	105	113	563
	Percent	---	27.9%	33.4%	18.7%	20.1%	100.0%
55-64	Number	---	314	359	188	219	1,080
	Percent	---	29.1%	33.2%	17.4%	20.3%	100.0%
65-74	Number	---	460	501	248	330	1,539
	Percent	---	29.9%	32.6%	16.1%	21.4%	100.0%
75-84	Number	---	425	432	195	323	1,375
	Percent	---	30.9%	31.4%	14.2%	23.5%	100.0%
85+	Number	---	115	112	48	125	400
	Percent	---	28.8%	28.0%	12.0%	31.3%	100.0%
Unknown	Number	---	0	0	0	0	0
	Percent	---	---	---	---	---	---
Total	Number	---	1,525	1,678	815	1,155	5,173
	Percent	---	29.5%	32.4%	15.8%	22.3%	100.0%

**Table 114. Colorectal Cancer Cases by Stage and Race/Ethnicity, Nevada Residents, 2000-2004**

Stage		Race/Ethnicity						Total
		White	Black	Native American	Asian	Hispanic	Other/Unknown	
In situ	Number	---	---	---	---	---	---	---
	Percent	---	---	---	---	---	---	---
Localized	Number	1,329	73	7	46	53	17	1,525
	Percent	30.2%	24.7%	38.9%	25.0%	24.8%	28.3%	29.5%
Regional	Number	1,438	93	5	73	57	12	1,678
	Percent	32.7%	31.4%	27.8%	39.7%	26.6%	20.0%	32.4%
Distant	Number	667	65	0	32	44	7	815
	Percent	15.2%	22.0%	---	17.4%	20.6%	11.7%	15.8%
Unstaged	Number	967	65	6	33	60	24	1,155
	Percent	22.0%	22.0%	33.3%	17.9%	28.0%	40.0%	22.3%
Total	Number	4,401	296	18	184	214	60	5,173
	Percent	100.0%	100.0%	100.0%	100.0%	100.0%	100.0%	100.0%

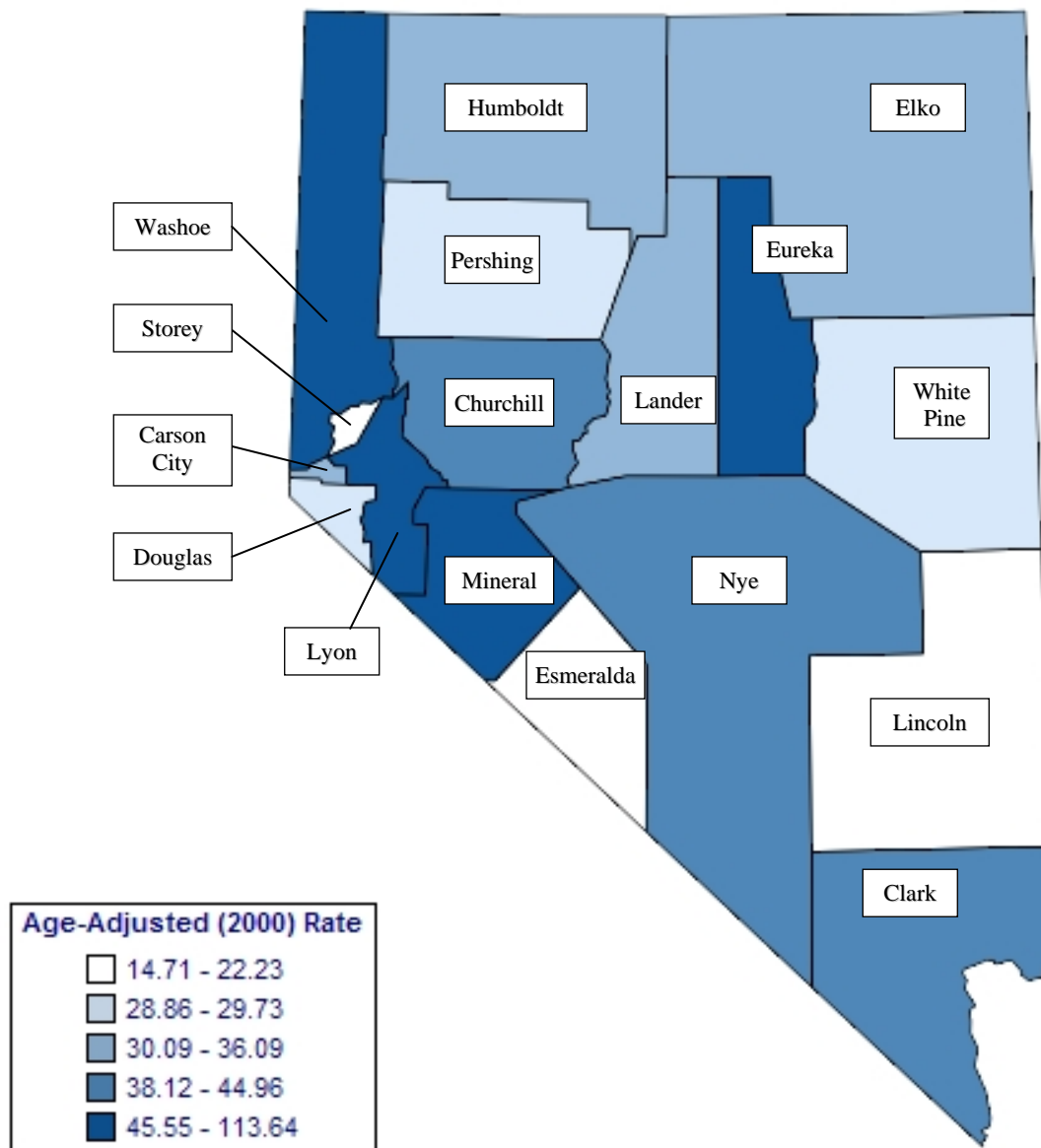
**Table 115. Median Age at Diagnosis of Colorectal Cancer by Race/Ethnicity and Gender, Nevada Residents, 2000-2004**

Race/Ethnicity	Gender					
	Male		Female		Total	
	Cases	Median Age	Cases	Median Age	Cases	Median Age
White	2,400	69.0	2,001	72.0	4,401	70.0
Black	162	65.0	134	66.0	296	65.0
Native American	6	68.0	12	57.0	18	58.5
Asian	88	66.0	96	65.5	184	66.0
Hispanic	121	64.0	93	66.0	214	64.5
Other/Unknown	33	68.0	27	78.0	60	70.5
Total	2,810	68.0	2,363	71.0	5,173	69.0

Note: Those cases of other/unknown gender and/or unknown ages are not included in this table. The median age was not calculated for those numbers less than five.

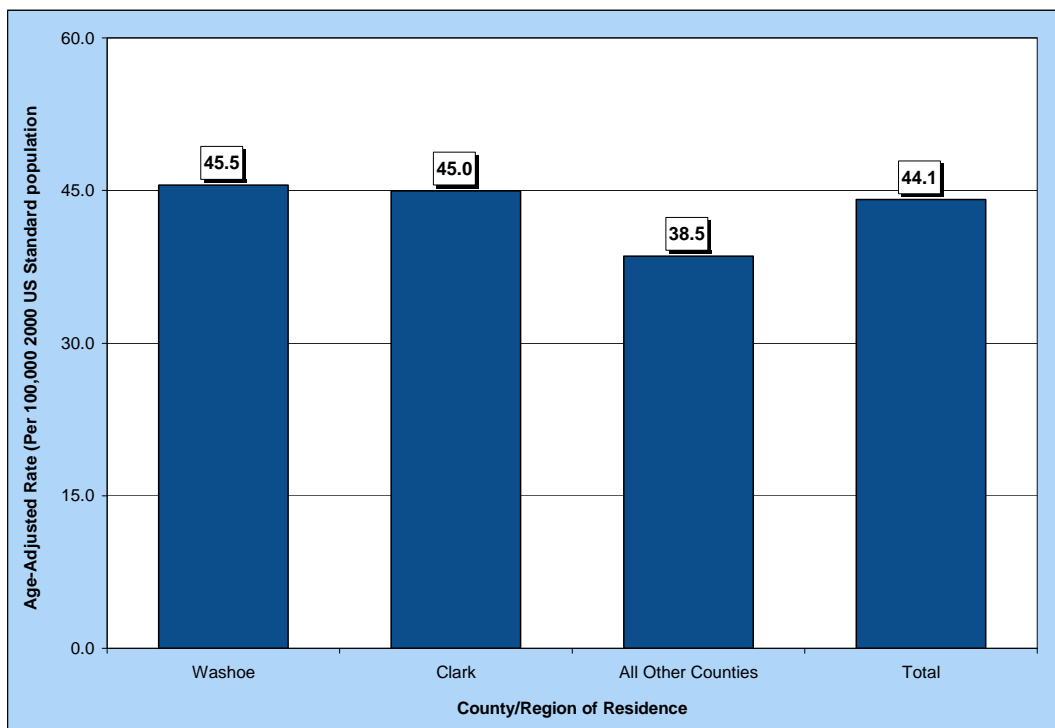
## INPATIENT HOSPITAL DISCHARGES

**Figure 79. Colorectal Cancer Age-Adjusted (2000) Inpatient Discharge Rates, Nevada Residents, 2000-2004**

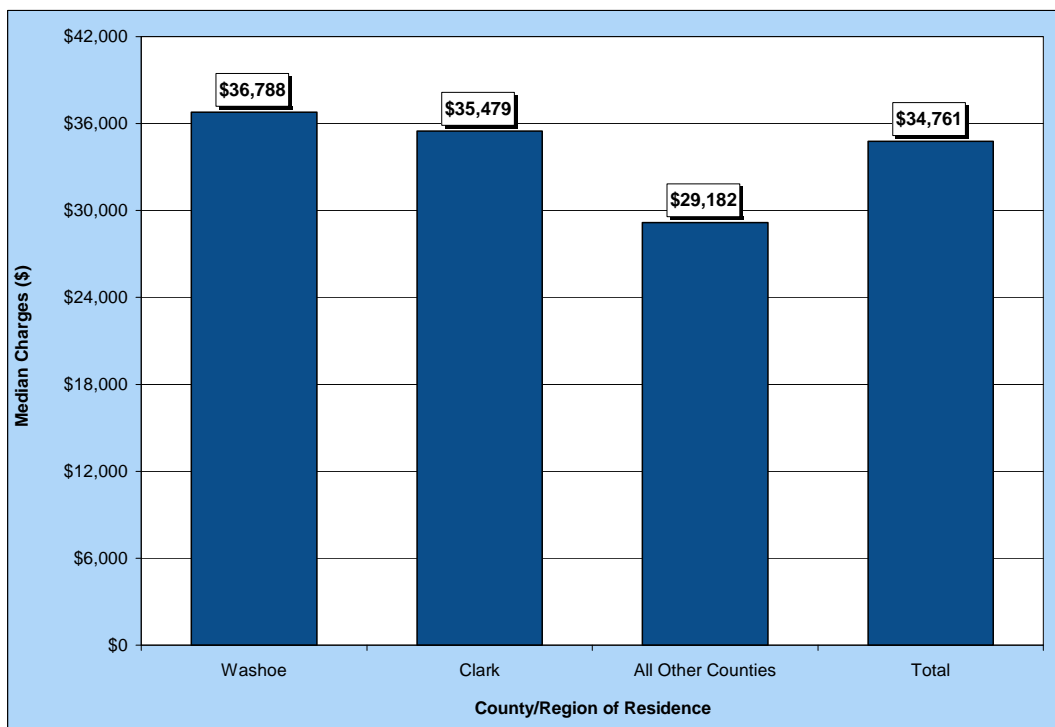


Note: Rates are per 100,000 population and age-adjusted to 2000 US Standard population. Caution should be used when interpreting rates based upon small numbers and comparing inpatient hospital discharge rates to other data sources, because it is occurrence based data. See Technical Notes for more information.

**Figure 80. Colorectal Cancer Age-Adjusted Inpatient Discharge Rates by County/Region of Residence, Nevada Residents, 2000-2004**

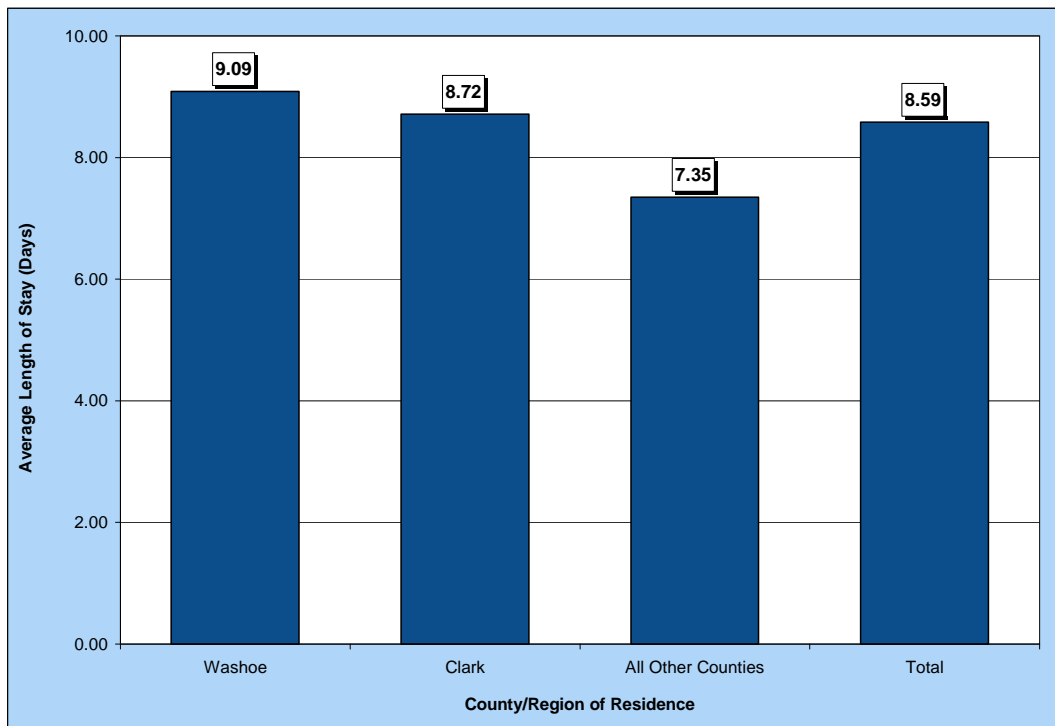


**Figure 81. Median Charges for Colorectal Cancer Inpatient Discharges by County/Region of Residence, Nevada Residents, 2000-2004**





**Figure 82. Average Length of Stay for Colorectal Cancer Inpatient Discharges by County/Region of Residence, Nevada Residents, 2000-2004**



**Table 116. Colorectal Cancer Inpatient Discharges by Gender, Charges, Length of Stay, and County/Region of Residence, Nevada Residents, 2000-2004**

Category	County/Region of Residence				
	Nevada Total	Clark	Washoe	All Other Counties	Unknown
<b>Total</b>					
Discharges	4,433	3,098	717	617	1
Rate*	44.1	45.0	45.5	38.5	---
95% C.I.	(42.8-45.5)	(43.3-46.6)	(42.2-49.1)	(35.5-41.8)	---
<b>Gender</b>					
Male	2,300	1,617	342	341	0
Rate*	48.0	49.7	46.7	43.0	---
95% C.I.	(46.0-50.1)	(47.2-52.4)	(41.6-52.3)	(38.4-48.0)	---
Female	2,133	1,481	375	276	1
Rate*	40.5	41.0	44.2	33.6	---
95% C.I.	(38.8-42.2)	(38.9-43.1)	(39.8-48.9)	(29.8-37.9)	---
Other/Unknown	0	0	0	0	0
<b>Inpatient Discharge Charges (\$)</b>					
Total Charges	\$219,084,483	\$160,833,847	\$35,182,584	\$22,990,609	\$77,443
Average Charges	\$49,421	\$51,915	\$49,069	\$37,262	\$77,443
Median Charges	\$34,761	\$35,479	\$36,788	\$29,182	\$77,443
<b>Discharge Length of Stay (LOS) (Days)</b>					
Total LOS	38,066	27,001	6,519	4,536	10
Average LOS	8.6	8.7	9.1	7.4	10.0
Median LOS	7.0	7.0	7.0	6.0	10.0

\* Rates are per 100,000 population and are age-adjusted to the 2000 US Standard population.

Note: The "---" is used for rates calculated on numbers less than ten. Caution should be used when comparing inpatient hospital discharge data to other data sources, since it is occurrence-based data. Please See Technical Notes for more information.

**Table 117. Colorectal Cancer Inpatient Discharges by Age Group and County/Region of Residence, Nevada Residents, 2000-2004**

Category	County/Region of Residence			
	Nevada Total	Clark	Washoe	All Other Counties
<b>Total</b>				
<b>Discharges</b>	4,433	3,098	717	617
<b>Rate*</b>	40.5	40.2	39.9	42.6
<b>95% C.I.</b>	(39.3-41.7)	(38.8-41.7)	(37.0-42.9)	(39.2-45.9)
<b>Age Group</b>				
<1	0	0	0	0
Rate*	---	---	---	---
95% C.I.	---	---	---	---
1-4	0	0	0	0
Rate*	---	---	---	---
95% C.I.	---	---	---	---
5-14	1	0	1	0
Rate*	---	---	---	---
95% C.I.	---	---	---	---
15-24	8	5	3	0
Rate*	---	---	---	---
95% C.I.	---	---	---	---
25-34	33	24	9	0
Rate*	2.0	2.0	---	---
95% C.I.	(1.34-2.73)	(1.20-2.80)	---	---
35-44	145	108	15	22
Rate*	8.5	9.0	5.3	10.1
95% C.I.	(7.12-9.89)	(7.29-10.68)	(2.60-7.92)	(5.86-14.28)
45-54	493	349	84	60
Rate*	33.0	34.6	32.0	26.9
95% C.I.	(30.10-35.93)	(31.00-38.27)	(25.19-38.90)	(20.06-33.65)
55-64	929	678	147	104
Rate*	85.1	90.2	84.6	62.5
95% C.I.	(79.63-90.57)	(83.42-97.00)	(70.95-98.31)	(50.48-74.50)
65-74	1,310	902	182	226
Rate*	182.8	182.3	170.8	195.6
95% C.I.	(172.85-192.64)	(170.42-194.22)	(146.01-195.65)	(170.06-221.05)
75-84	1,164	816	194	154
Rate*	283.2	291.6	306.4	226.9
95% C.I.	(266.94-299.48)	(271.61-311.63)	(263.26-349.48)	(191.09-262.78)
85+	350	216	82	51
Rate*	368.4	354.8	469.7	305.8
95% C.I.	(329.78-406.96)	(307.49-402.12)	(368.04-571.37)	(221.88-389.75)
Unknown	0	0	0	0

\* Rates are per 100,000 age-specific population.

Note: The "---" is used for rates calculated on numbers less than ten. Caution should be used when comparing inpatient hospital discharge data to other data sources, since it is occurrence-based data. Please See Technical Notes for more information.

**Table 118. Colorectal Cancer Inpatient Discharges by Age Group and Gender, Nevada Residents, 2000-2004**

Age Group	Gender		
	Male	Female	Total
<1	0	0	0
Rate*	---	---	---
95% C.I.	---	---	---
1-4	0	0	0
Rate*	---	---	---
95% C.I.	---	---	---
5-14	0	1	1
Rate*	---	---	---
95% C.I.	---	---	---
15-24	4	4	8
Rate*	---	---	---
95% C.I.	---	---	---
25-34	10	23	33
Rate*	1.19	2.97	2.04
95% C.I.	(0.45-1.92)	(1.75-4.18)	(1.34-2.73)
35-44	81	64	145
Rate*	9.15	7.81	8.50
95% C.I.	(7.16-11.14)	(5.89-9.72)	(7.12-9.89)
45-54	252	241	493
Rate*	33.29	32.73	33.01
95% C.I.	(29.18-37.40)	(28.59-36.86)	(30.10-35.93)
55-64	542	387	929
Rate*	100.70	69.92	85.10
95% C.I.	(92.23-109.18)	(62.96-76.89)	(79.63-90.57)
65-74	733	577	1,310
Rate*	207.46	158.73	182.75
95% C.I.	(192.44-222.48)	(145.78-171.68)	(172.85-192.64)
75-84	559	605	1,164
Rate*	301.08	268.49	283.21
95% C.I.	(276.12-326.04)	(247.10-289.89)	(266.94-299.48)
85+	119	231	350
Rate*	374.60	365.24	368.37
95% C.I.	(307.30-441.91)	(318.14-412.34)	(329.78-406.96)
Unknown	0	0	0
Total	2,300	2,133	4,433
Rate*	41.38	39.63	40.52
95% C.I.	(39.7-43.1)	(37.9-41.3)	(39.3-41.7)

\* Rates are per 100,000 age-specific population.

Note: The "---" is used for rates calculated on numbers less than ten. Caution should be used when comparing inpatient hospital discharge data to other data sources, since it is occurrence-based data. Please See Technical Notes for more information.

**Table 119. Colorectal Cancer Inpatient Discharges by County/Region of Residence, Nevada Residents, 2000-2004**

County of Residence	2000-2004 Inpatient Hospital Discharges				
	Cases	Rate*		Age-Adjusted Rate**	
		Rate	95% C.I.	Rate	95% C.I.
Carson City	109	42.6	(34.6-50.6)	36.1	(29.6-43.7)
Churchill	46	36.8	(26.2-47.5)	38.1	(27.8-51.4)
Clark	3,098	40.2	(38.8-41.7)	45.0	(43.3-46.6)
Douglas	84	37.9	(29.8-46.0)	29.7	(23.6-37.3)
Elko	46	20.1	(14.3-26.0)	34.8	(24.6-48.2)
Esmeralda	1	---	---	---	---
Eureka	7	---	---	---	---
Humboldt	22	27.2	(15.8-38.5)	34.0	(20.9-53.2)
Lander	7	---	---	---	---
Lincoln	5	---	---	---	---
Lyon	133	67.9	(56.3-79.4)	59.5	(49.7-70.9)
Mineral	27	113.8	(70.9-156.8)	86.3	(55.9-130.6)
Nye	104	59.0	(47.7-70.4)	39.2	(31.6-48.6)
Pershing	7	---	---	---	---
Storey	4	---	---	---	---
Washoe	717	39.9	(37.0-42.9)	45.5	(42.2-49.1)
White Pine	15	39.3	(19.4-59.3)	28.9	(16.1-48.4)
Unknown	1	---	---	---	---
<b>Total</b>	<b>4,433</b>	<b>40.5</b>	<b>(39.3-41.7)</b>	<b>44.1</b>	<b>(42.8-45.5)</b>

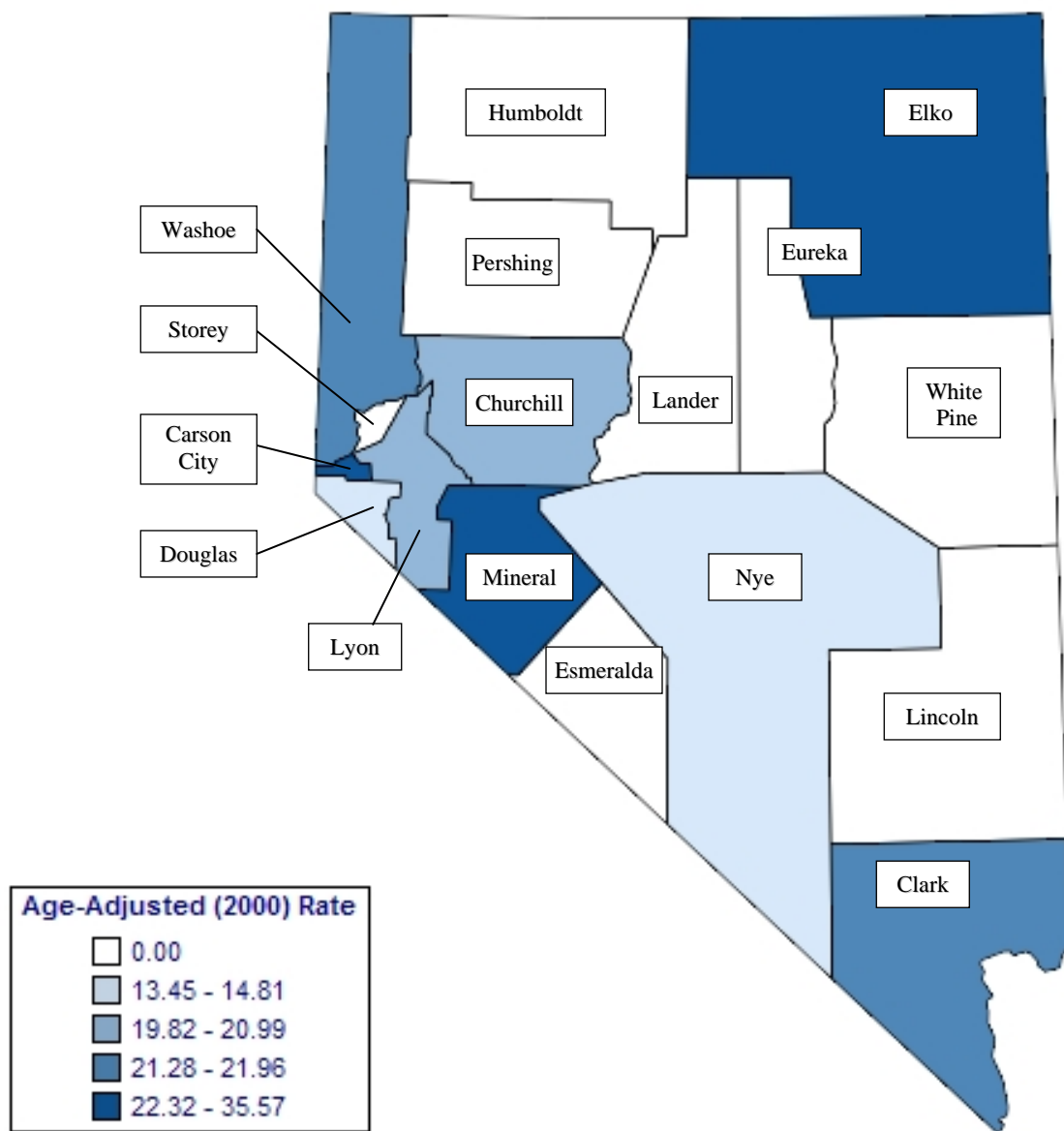
Note: The "----" is used for rates calculated on numbers less than ten. \*Rates are per 100,000 population. \*\*Rates are per 100,000 population and are age-adjusted to the 2000 US Standard population.

**Table 120. Colorectal Cancer Inpatient Discharges by Age Group, Charges and Length of Stay, Nevada Residents, 2000-2004**

Age Group	Discharges	Charges (\$)			Length of Stay (Days)		
		Total	Average	Median	Total	Average	Median
<1	0	---	---	---	---	---	---
1-4	0	---	---	---	---	---	---
5-14	1	---	---	---	---	---	---
15-24	8	---	---	---	---	---	---
25-34	33	2,067,746	62,659	36,746	339	10.3	7.0
35-44	145	5,885,069	40,587	34,295	1,112	7.7	7.0
45-54	493	24,562,662	49,823	33,290	4,344	8.8	7.0
55-64	929	40,470,628	43,564	33,221	7,231	7.8	6.0
65-74	1,310	62,891,626	48,009	33,818	10,701	8.2	7.0
75-84	1,164	60,938,806	52,353	36,983	10,701	9.2	7.0
85+	350	21,970,894	62,774	37,082	3,585	10.2	8.0
Unknown	0	---	---	---	---	---	---
<b>Total</b>	<b>4,433</b>	<b>219,084,483</b>	<b>49,421</b>	<b>34,761</b>	<b>38,066</b>	<b>8.6</b>	<b>7.0</b>

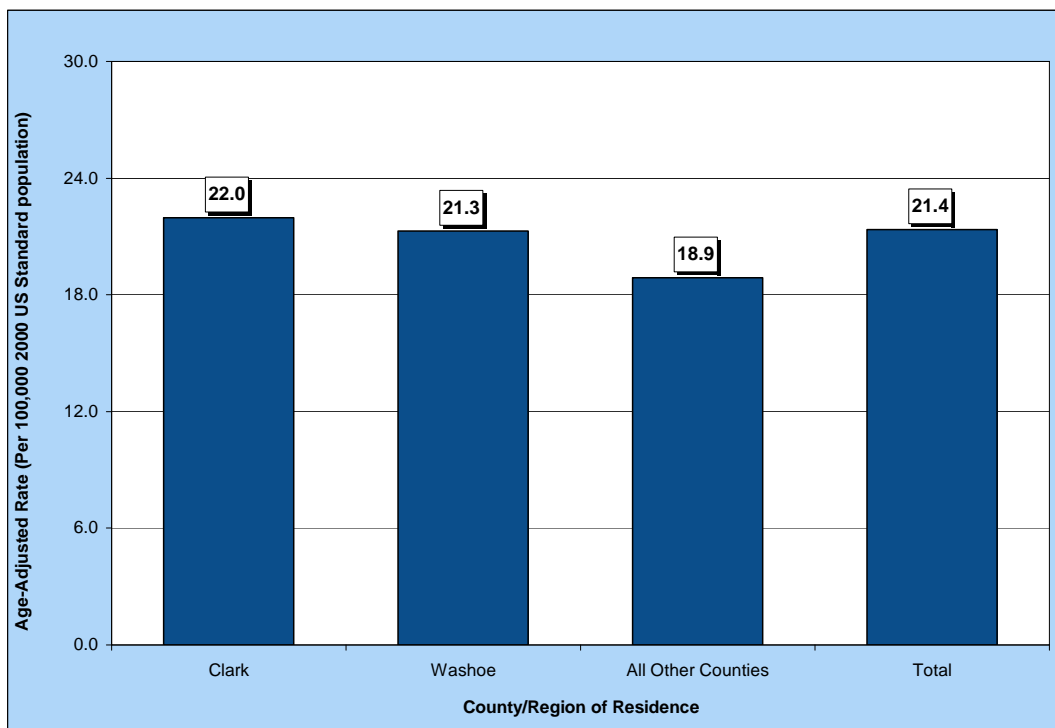
## MORTALITY

**Figure 83. Colorectal Cancer Age-Adjusted (2000) Mortality Rates, Nevada Residents, 2000-2004**

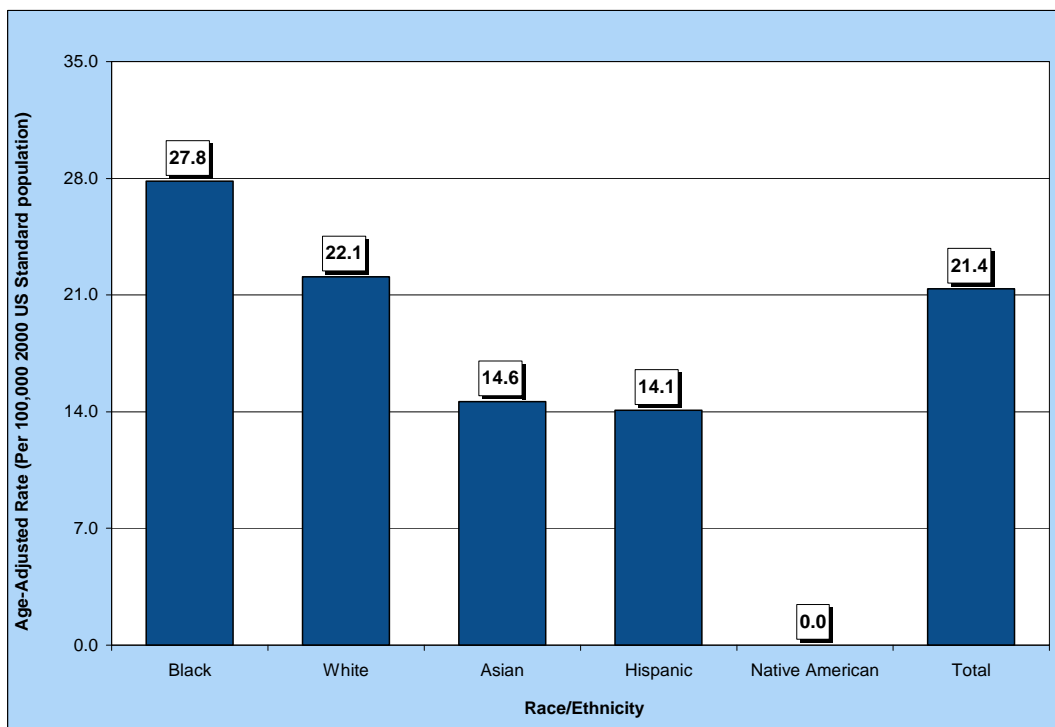


Note: Rates are per 100,000 population and age-adjusted to 2000 US Standard population. Caution should be used when interpreting rates based upon small numbers. See Technical Notes for more information.

**Figure 84. Colorectal Cancer Age-Adjusted Mortality Rates by County/Region of Residence, Nevada Residents, 2000-2004**



**Figure 85. Colorectal Cancer Age-Adjusted Mortality Rates by Race/Ethnicity, Nevada Residents, 2000-2004**



**Table 121. Colorectal Cancer Mortality by Gender, Race/Ethnicity and County/Region of Residence, Nevada Residents, 2000-2004**

Category	County/Region of Residence			
	Nevada Total	Clark	Washoe	All Other Counties
<b>Total</b>				
<b>Mortality</b>	2,030	1,422	322	286
<b>Rate*</b>	21.4	22.0	21.3	18.9
<b>95% C.I.</b>	(20.4-22.4)	(20.8-23.2)	(19.0-23.8)	(16.7-21.3)
<b>Gender</b>				
Male	1,120	778	183	159
Rate*	25.8	26.6	26.4	22.3
95% C.I.	(24.2-27.5)	(24.6-28.8)	(22.5-30.9)	(18.8-26.3)
Female	910	644	139	127
Rate*	17.8	18.4	16.8	15.9
95% C.I.	(16.7-19.0)	(17.0-19.9)	(14.1-19.8)	(13.2-18.9)
Other/Unknown	0	0	0	0
<b>Race/Ethnicity</b>				
White	1,752	1,194	291	267
Rate*	22.1	22.9	21.8	19.2
95% C.I.	(21.1-23.2)	(21.6-24.3)	(19.4-24.6)	(16.9-21.7)
Black	128	119	6	3
Rate*	27.8	28.1	---	---
95% C.I.	(22.9-33.8)	(22.8-34.4)	---	---
Native American	9	1	3	5
Rate*	---	---	---	---
95% C.I.	---	---	---	---
Asian	59	45	12	2
Rate*	14.6	12.7	27.1	---
95% C.I.	(10.4-20.6)	(8.6-19.4)	(11.6-58.1)	---
Hispanic	77	60	9	8
Rate*	14.1	13.9	---	---
95% C.I.	(10.6-18.5)	(10.0-19.2)	---	---
Other/Unknown	5	3	1	1

Note: The "---" is used for rates calculated on numbers less than ten.

\*Rates are per 100,000 population and are age-adjusted to the 2000 US Standard population.



**Table 122. Colorectal Cancer Mortality by Age Group and County/Region of Residence, Nevada Residents, 2000-2004**

Category	County/Region of Residence			
	Nevada Total	Clark	Washoe	All Other Counties
<b>Total</b>				
Deaths	2,030	1,422	322	286
Rate*	21.4	22.0	21.3	18.9
95% C.I.	(20.4-22.4)	(20.8-23.2)	(19.0-23.8)	(16.7-21.3)
<b>Age Group</b>				
<1	0	0	0	0
Rate*	---	---	---	---
95% C.I.	---	---	---	---
1-4	0	0	0	0
Rate*	---	---	---	---
95% C.I.	---	---	---	---
5-14	0	0	0	0
Rate*	---	---	---	---
95% C.I.	---	---	---	---
15-24	0	0	0	0
Rate*	---	---	---	---
95% C.I.	---	---	---	---
25-34	7	6	1	0
Rate*	---	---	---	---
95% C.I.	---	---	---	---
35-44	46	34	7	5
Rate*	2.7	2.8	---	---
95% C.I.	(1.92-3.48)	(1.88-3.78)	---	---
45-54	154	114	25	15
Rate*	10.3	11.3	9.5	6.7
95% C.I.	(8.68-11.94)	(9.24-13.39)	(5.80-13.28)	(3.32-10.11)
55-64	330	234	53	43
Rate*	30.2	31.1	30.5	25.8
95% C.I.	(26.97-33.49)	(27.15-35.12)	(22.30-38.73)	(18.11-33.56)
65-74	576	405	89	82
Rate*	80.4	81.9	83.5	71.0
95% C.I.	(73.79-86.92)	(73.89-89.84)	(66.18-100.89)	(55.60-86.31)
75-84	634	449	94	91
Rate*	154.3	160.5	148.5	134.1
95% C.I.	(142.25-166.27)	(145.62-175.31)	(118.44-178.46)	(106.55-161.65)
85+	283	180	53	50
Rate*	297.9	295.7	303.6	299.8
95% C.I.	(263.15-332.56)	(252.48-338.87)	(221.85-385.32)	(216.71-382.93)
Unknown	0	0	0	0

Note: The "---" is used for rates calculated on numbers less than ten.

\* Rates are per 100,000 age-specific population.

**Table 123. Colorectal Cancer Mortality by County of Residence, Nevada Residents, 2000-2004**

County of Residence at Diagnosis	2000-2004 Mortality				
	Cases	Rate*		Age-Adjusted Rate**	
		Rate	95% C.I.	Rate	95% C.I.
Carson City	67	26.2	(19.9-32.5)	22.3	(17.3-28.5)
Churchill	25	20.0	(12.2-27.9)	21.0	(13.5-31.5)
Clark	1,422	18.5	(17.5-19.4)	22.0	(20.8-23.2)
Douglas	35	15.8	(10.6-21.0)	13.5	(9.2-19.3)
Elko	34	14.9	(9.9-19.9)	30.0	(19.9-43.8)
Esmeralda	1	---	---	---	---
Eureka	0	---	---	---	---
Humboldt	6	---	---	---	---
Lander	2	---	---	---	---
Lincoln	5	---	---	---	---
Lyon	43	21.9	(15.4-28.5)	19.8	(14.3-27.1)
Mineral	12	50.6	(22.0-79.2)	35.6	(18.1-64.3)
Nye	40	22.7	(15.7-29.7)	14.8	(10.4-21.1)
Pershing	9	---	---	---	---
Storey	1	---	---	---	---
Washoe	322	17.9	(16.0-19.9)	21.3	(19.0-23.8)
White Pine	6	---	---	---	---
Unknown	0	---	---	---	---
<b>Total</b>	<b>2,030</b>	<b>18.6</b>	<b>(17.7-19.4)</b>	<b>21.4</b>	<b>(20.4-22.4)</b>

Note: The "---" is used for rates calculated on numbers less than ten. \*Rates are per 100,000 population. \*\*Rates are per 100,000 population and are age-adjusted to the 2000 US Standard population.

**Table 124. Colorectal Cancer Mortality by Race/Ethnicity and Gender, Nevada Residents, 2000-2004**

Race/Ethnicity	Gender				
	Male	Female	Other/Unknown	Total	
White	Incidence	978	774	0	1,752
	Rate*	26.7	18.3	---	22.1
	95% C.I.	(24.9-28.5)	(17.0-19.6)	---	(21.1-23.2)
Black	Incidence	65	63	0	128
	Rate*	32.3	24.7	---	27.8
	95% C.I.	(23.7-44.1)	(18.8-32.2)	---	(22.9-33.8)
Native American	Incidence	4	5	0	9
	Rate*	---	---	---	---
	95% C.I.	---	---	---	---
Asian	Incidence	24	35	0	59
	Rate*	14.1	14.9	---	14.6
	95% C.I.	(8.3-24.7)	(9.4-23.7)	---	(10.4-20.6)
Hispanic	Incidence	45	32	0	77
	Rate*	20.2	10.3	---	14.1
	95% C.I.	(13.3-30.3)	(6.7-15.4)	---	(10.6-18.5)
Other/Unknown	4	1	0	5	
Total	Incidence	1,120	910	0	2,030
	Rate*	25.8	17.8	---	21.4
	95% C.I.	(24.2-27.5)	(16.7-19.0)	---	(20.4-22.4)

Note: The "---" is used for rates calculated on numbers less than ten. \*Rates are per 100,000 population and are age-adjusted to the 2000 US Standard population.

**Table 125. Colorectal Cancer Mortality by Age Group and Gender, Nevada Residents, 2000-2004**

Age Group	Gender		
	Male	Female	Total
<1	0	0	0
Rate*	---	---	---
95% C.I.	---	---	---
1-4	0	0	0
Rate*	---	---	---
95% C.I.	---	---	---
5-14	0	0	0
Rate*	---	---	---
95% C.I.	---	---	---
15-24	0	0	0
Rate*	---	---	---
95% C.I.	---	---	---
25-34	3	4	7
Rate*	---	---	---
95% C.I.	---	---	---
35-44	24	22	46
Rate*	2.71	2.68	2.70
95% C.I.	(1.63-3.80)	(1.56-3.80)	(1.92-3.48)
45-54	86	68	154
Rate*	11.36	9.23	10.31
95% C.I.	(8.96-13.76)	(7.04-11.43)	(8.68-11.94)
55-64	202	128	330
Rate*	37.53	23.13	30.23
95% C.I.	(32.36-42.71)	(19.12-27.13)	(26.97-33.49)
65-74	342	234	576
Rate*	96.80	64.37	80.35
95% C.I.	(86.54-107.05)	(56.12-72.62)	(73.79-86.92)
75-84	345	289	634
Rate*	185.82	128.26	154.26
95% C.I.	(166.21-205.43)	(113.47-143.04)	(142.25-166.27)
85+	118	165	283
Rate*	371.45	260.89	297.85
95% C.I.	(304.43-438.48)	(221.08-300.69)	(263.15-332.56)
Unknown	0	0	0
Total	1,120	910	2,030
Rate*	20.15	16.91	18.55
95% C.I.	(19.0-21.3)	(15.8-18.0)	(17.7-19.4)

Note: The "---" is used for rates calculated on numbers less than ten.

\* Rates are per 100,000 age-specific population.

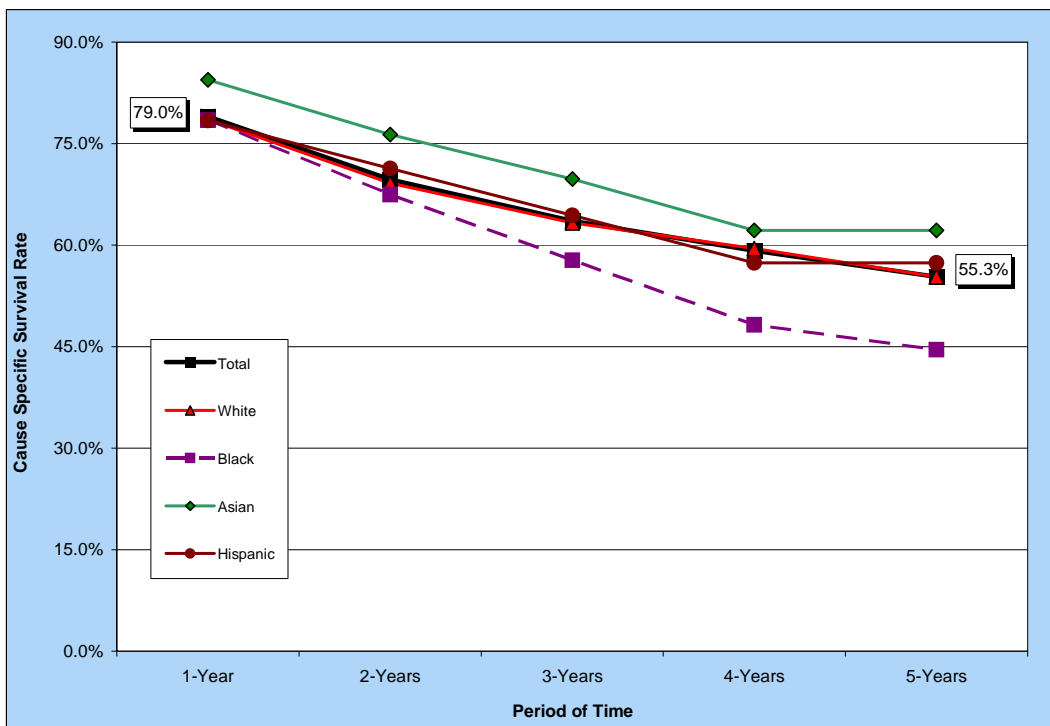
**Table 126. Median Age at Death from Colorectal Cancer by Race/Ethnicity and Gender, Nevada Residents, 2000-2004**

Race/Ethnicity	Gender					
	Male		Female		Total	
	Cases	Median Age	Cases	Median Age	Cases	Median Age
White	978	72.0	774	75.0	1,752	73.0
Black	65	69.0	63	68.0	128	69.0
Native American	4	---	5	66.0	9	58.0
Asian	24	68.0	35	66.0	59	67.0
Hispanic	45	70.0	32	72.5	77	72.0
Other/Unknown	4	---	1	---	5	73.0
<b>Total</b>	<b>1,120</b>	<b>72.0</b>	<b>910</b>	<b>74.0</b>	<b>2,030</b>	<b>73.0</b>

Note: Those cases of other/unknown gender and/or unknown ages are not included in this table. The median age was not calculated for those numbers less than five.

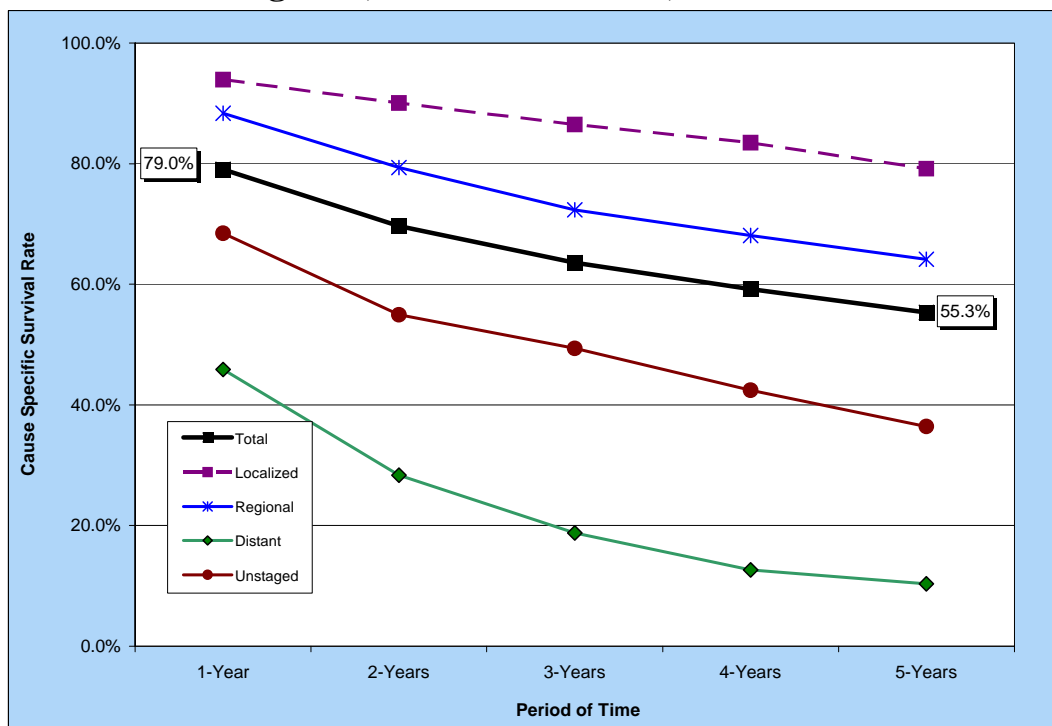
## SURVIVAL RATE

**Figure 86. Survival Rates for Colorectal Cancer by Race/Ethnicity, Nevada Residents, 2000-2004**



Notes: The survival rate for those racial/ethnic groups not included in this chart could not be calculated due to small cell size.

**Figure 87. Survival Rates for Colorectal Cancer by Stage of Cancer at Diagnosis, Nevada Residents, 2000-2004**



**Table 127. Cause-Specific Survival Rates for Colorectal Cancer by Race/Ethnicity and Gender, Nevada Residents, 2000-2004**

Race/ Ethnicity and Gender	Number of Cases	Cause Specific Survival Rate					Median Survival Time (years)
		One Year	Two Years	Three Years	Four Years	Five Years	
Total	4,121	79.0%	69.7%	63.6%	59.2%	55.3%	> 5 YEARS
Male	2,211	78.7%	68.2%	61.9%	57.5%	54.3%	> 5 YEARS
Female	1,910	79.4%	71.4%	65.5%	61.3%	56.5%	> 5 YEARS
<b>Race/Ethnicity</b>							
White	3,479	78.6%	69.2%	63.3%	59.5%	55.3%	> 5 YEARS
Male	1,885	78.2%	67.7%	61.6%	57.5%	54.5%	> 5 YEARS
Female	1,594	79.0%	70.9%	65.3%	61.8%	56.3%	> 5 YEARS
Black	246	78.4%	67.5%	57.8%	48.3%	44.6%	3.82
Male	127	80.3%	64.5%	53.2%	46.1%	39.9%	3.45
Female	119	76.4%	71.3%	63.8%	51.0%	51.0%	> 5 YEARS
Native American	11	---	---	---	---	---	.
Male	2	---	---	---	---	---	.
Female	9	---	---	---	---	---	.
Asian	154	84.4%	76.4%	69.8%	62.2%	62.2%	> 5 YEARS
Male	72	84.9%	77.1%	77.1%	71.6%	71.6%	> 5 YEARS
Female	82	84.0%	75.7%	63.7%	54.2%	54.2%	> 5 YEARS
Hispanic	176	78.4%	71.3%	64.4%	57.4%	57.4%	> 5 YEARS
Male	98	76.1%	69.9%	62.9%	55.3%	55.3%	> 5 YEARS
Female	78	81.3%	73.1%	66.3%	60.2%	60.2%	> 5 YEARS

Notes: 1) The "---" indicates that survival rate could not be calculated due to small cell size. Caution should be used when interpreting survival rates based upon categories with a small number of cases. 2) Those cases where the gender and/or race/ethnicity were other/unknown, are not shown separately, but are included in the category totals. 3) These rates may not be directly comparable to national rates because of different methodologies. Caution should be used when trying to compare rates for Nevada and the nation. For more information on the calculation of survival rates, please refer to Technical Notes section.

**Table 128. Cause-Specific Survival Rates for Colorectal Cancer by Stage of Cancer at Diagnosis and Gender, Nevada Residents, 2000-2004**

Survival Rate of Stage at Diagnosis		Gender		
		Total	Male	Female
Total	Cases	4,121	2,211	1,910
	One Year	79.0%	78.7%	79.4%
	5 Years	55.3%	54.3%	56.5%
	Median Survival	> 5 YEARS	> 5 YEARS	> 5 YEARS
<b>Stage at Diagnosis</b>				
In situ	Cases	---	---	---
	One Year	---	---	---
	5 Years	---	---	---
	Median Survival	---	---	---
Localized	Cases	1,189	639	550
	One Year	93.9%	93.8%	94.1%
	5 Years	79.1%	76.6%	82.6%
	Median Survival	> 5 YEARS	> 5 YEARS	> 5 YEARS
Regional	Cases	1,346	724	622
	One Year	88.4%	89.9%	86.6%
	5 Years	64.2%	66.2%	62.2%
	Median Survival	> 5 YEARS	> 5 YEARS	> 5 YEARS
Distant	Cases	671	384	287
	One Year	45.8%	43.9%	48.4%
	5 Years	10.4%	9.8%	11.6%
	Median Survival	0.92	0.89	0.97
Unstaged	Cases	915	464	451
	One Year	68.4%	67.6%	69.3%
	5 Years	36.4%	33.5%	39.7%
	Median Survival	2.89	2.59	3.34

Notes: 1) The "---" indicates that survival rate could not be calculated due to small cell size. Caution should be used when interpreting survival rates based upon categories with a small number of cases. 2) These rates may not be directly comparable to national rates because of different methodologies. Caution should be used when trying to compare rates for Nevada and the nation. For more information on the calculation of survival rates, please refer to Technical Notes section.