

ALL OTHER CANCERS

Table 255. Cancer Incidence, Inpatient Hospital Discharges and Mortality by Type of Cancer, Nevada Residents, 2000-2004

Type of Cancer	Incidence	Hospital Admissions	Mortality
Total	49,963	34,796	19,379
Rate*	480.0	330.0	197.0
95% C.I.	(475.6-484.2)	(326.9-334.0)	(193.7-199.4)
Skin	2,023	93	298
Rate*	19.0	0.9	2.8
95% C.I.	(18.4-20.1)	(0.7-1.1)	(2.5-3.2)
Corpus Uteri & Uterus NOS	1,033	946	156
Rate*	9.7	8.8	1.6
95% C.I.	(9.1-10.3)	(8.3-9.4)	(1.4-1.9)
Ovary	734	721	457
Rate*	7.0	6.7	4.5
95% C.I.	(6.5-7.5)	(6.2-7.2)	(4.1-5.0)
Thyroid Gland	1,126	1,570	29
Rate*	10.0	14.0	0.3
95% C.I.	(9.5-10.7)	(13.4-14.8)	(0.2-0.4)
Brain and Other Central Nervous System	663	946	415
Rate*	6.3	8.8	4.0
95% C.I.	(5.8-6.8)	(8.2-9.4)	(3.6-4.4)
Stomach	639	597	346
Rate*	6.4	5.8	3.6
95% C.I.	(5.9-6.9)	(5.3-6.3)	(3.2-4.0)
Liver and Intrahepatic Bile Ducts	555	379	501
Rate*	5.4	3.6	4.9
95% C.I.	(4.9-5.8)	(3.3-4.0)	(4.5-5.4)
Cervix Uteri	514	609	149
Rate*	4.7	5.5	1.4
95% C.I.	(4.3-5.2)	(5.1-6.0)	(1.2-1.7)
Esophagus	545	302	459
Rate*	5.2	2.9	4.4
95% C.I.	(4.8-5.7)	(2.5-3.2)	(4.0-4.9)
Larynx	391	166	108
Rate*	3.7	1.6	1.1
95% C.I.	(3.3-4.1)	(1.3-1.8)	(0.9-1.3)
Multiple Myeloma	453	373	341
Rate*	4.4	3.6	3.4
95% C.I.	(4.0-4.9)	(3.2-4.0)	(3.1-3.8)
Hodgkin's Lymphoma	279	118	37
Rate*	2.5	1.1	0.4
95% C.I.	(2.2-2.8)	(0.9-1.3)	(0.2-0.5)
All Other Sites	3,464	8,238	2,180
Rate*	34.0	78.0	22.0
95% C.I.	(32.7-35.1)	(76.2-79.7)	(21.4-23.4)

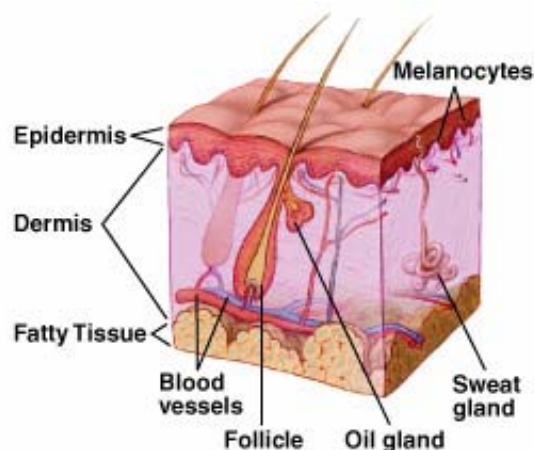
* Rates are per 100,000 population and age-adjusted to the 2000 US Standard population. Gender-specific cancers are per 100,000 gender-specific population and age-adjusted to the 2000 US Standard population.

Note: The "---" is used for rates calculated on numbers less than ten.

SKIN CANCER

GENERAL PROFILE⁴

Figure 166. Anatomy of the Skin⁴



General Anatomy: The skin is the body's largest organ. It protects against heat, sunlight, injury, and infection. It helps regulate body temperature, stores water and fat, and produces vitamin D. The skin has two main layers: the outer epidermis and the inner dermis. The epidermis is mostly made up of flat, scalelike cells called squamous cells. Round cells called basal cells lie under the squamous cells in the epidermis. The lower part of the epidermis also contains melanocytes. The dermis contains blood vessels, lymph vessels, hair follicles, and glands. Some of these glands produce sweat, which helps regulate body temperature. Other glands produce sebum, an oily substance that helps keep the skin from drying out. Sweat and sebum reach the skin's surface through tiny openings called pores. Melanoma is one of the most common cancers and occurs when melanocytes (pigment cells) become malignant.

Risk Factors: Dysplastic nevi moles, many (more than 50) ordinary moles, fair skin, personal history of melanoma or skin cancer, family history of melanoma, weakened immune system, severe blistering sunburns, and ultraviolet (UV) radiation.

Signs and Symptoms: Asymmetrical, border, color, and diameter changes in a mole, and Dysplastic Nevi moles are common signs and symptoms.

Diagnosing the Cancer: Excisional biopsy.

Treatment: Treatment options include: surgery (Sentinel lymph node biopsy, Lymph node dissection), chemotherapy (Orally or injection or Isolated limb perfusion), biological therapy, or radiation therapy.

Table 256. Skin Cancer Cases by Gender, Race/Ethnicity and County/Region of Residence at Diagnosis, Nevada Residents (2000-2004) and SEER-17 (2000-2004)

Category	County/Region of Residence					
	Nevada Total	Clark	Washoe	All Other Counties	Unknown	SEER 17 (2000-2004)
Total						
Cases	2,023	1,505	301	215	2	67,272
Rate*	19.2	20.8	17.5	13.8	---	18.5
95% C.I.	(18.4-20.1)	(19.7-21.9)	(15.5-19.7)	(12.0-15.9)	---	(18.4-18.7)
Gender						
Male	1,227	933	162	131	1	38,221
Rate*	24.5	27.3	19.8	16.9	---	23.6
95% C.I.	(23.0-26.0)	(25.4-29.2)	(16.8-23.5)	(14.1-20.3)	---	(23.4-23.9)
Female	795	571	139	84	1	29,051
Rate*	14.7	15.3	15.6	10.9	---	14.9
95% C.I.	(13.7-15.8)	(14.0-16.6)	(13.1-18.7)	(8.7-13.6)	---	(14.8-15.1)
Other/Unknown	1	1	0	0	0	0
Race/Ethnicity						
White	1,926	1,420	295	210	1	63,542
Rate*	24.1	27.2	20.8	15.6	---	21.6
95% C.I.	(23.0-25.2)	(25.7-28.7)	(18.4-23.4)	(13.5-18.0)	---	(21.4-21.7)
Black	15	14	0	1	0	309
Rate*	3.1	3.0	---	---	---	1.0
95% C.I.	(1.6-5.6)	(1.6-5.7)	---	---	---	(0.9-1.1)
Native American	2	1	0	1	0	83
Rate*	---	---	---	---	---	2.3
95% C.I.	---	---	---	---	---	(1.8-1.8)
Asian	6	6	0	0	0	440
Rate*	---	---	---	---	---	1.5
95% C.I.	---	---	---	---	---	(1.3-1.6)
Hispanic	33	29	3	1	0	2,013
Rate*	3.2	3.5	---	---	---	4.5
95% C.I.	(1.9-5.4)	(2.0-6.4)	---	---	---	(4.3-4.7)
Other/Unknown	41	35	3	2	1	2,898

* Rates are per 100,000 age-specific population.

Note: The "---" is used for rates calculated on numbers less than ten and SEER numbers less than five. See Technical Notes for more information.

Table 257. Skin Cancer Inpatient Discharges by Gender, Charges, Length of Stay, and County/Region of Residence, Nevada Residents, 2000-2004

Category	County/Region of Residence				
	Nevada Total	Clark	Washoe	All Other Counties	Unknown
Total					
Discharges	93	63	14	16	0
Rate*	0.9	0.8	0.8	1.0	---
95% C.I.	(0.7-1.1)	(0.6-1.1)	(0.4-1.4)	(0.6-1.6)	---
Gender					
Male	63	45	11	7	0
Rate*	1.2	1.2	1.4	---	---
95% C.I.	(0.9-1.5)	(0.9-1.6)	(0.7-2.6)	---	---
Female	30	18	3	9	0
Rate*	0.6	0.5	---	---	---
95% C.I.	(0.4-0.8)	(0.3-0.8)	---	---	---
Other/Unknown	0	0	0	0	0
Inpatient Discharge Charges (\$)					
Total Charges	\$2,273,481	\$1,652,293	\$360,763	\$260,425	\$0
Average Charges	\$24,446	\$26,227	\$25,769	\$16,277	\$0
Median Charges	\$15,620	\$14,513	\$23,518	\$13,906	\$0
Discharge Length of Stay (LOS) (Days)					
Total LOS	328	230	42	56	0
Average LOS	3.5	3.7	3.0	3.5	0.0
Median LOS	2.0	2.0	2.0	2.0	0.0

* Rates are per 100,000 population and are age-adjusted to the 2000 US Standard population.

Note: The "---" is used for rates calculated on numbers less than ten. Caution should be used when comparing inpatient hospital discharge data to other data sources, since it is occurrence-based data. Please See Technical Notes for more information.

Table 258. Skin Cancer Mortality by Age Group and County/Region of Residence, Nevada Residents, 2000-2004

Category	County/Region of Residence			
	Nevada Total	Clark	Washoe	All Other Counties
Total				
Deaths	298	197	51	50
Rate*	2.8	2.7	3.0	3.1
95% C.I.	(2.5-3.2)	(2.4-3.2)	(2.2-4.0)	(2.3-4.1)
Age Group				
<1	0	0	0	0
Rate*	---	---	---	---
95% C.I.	---	---	---	---
1-4	0	0	0	0
Rate*	---	---	---	---
95% C.I.	---	---	---	---
5-14	0	0	0	0
Rate*	---	---	---	---
95% C.I.	---	---	---	---
15-24	3	1	2	0
Rate*	---	---	---	---
95% C.I.	---	---	---	---
25-34	7	6	1	0
Rate*	---	---	---	---
95% C.I.	---	---	---	---
35-44	31	18	7	6
Rate*	1.8	1.5	---	---
95% C.I.	(1.18-2.46)	(0.81-2.19)	---	---
45-54	58	32	17	9
Rate*	3.9	3.2	6.5	---
95% C.I.	(2.88-4.88)	(2.08-4.28)	(3.40-9.57)	---
55-64	63	46	7	10
Rate*	5.8	6.1	---	6.0
95% C.I.	(4.35-7.20)	(4.35-7.89)	---	(2.28-9.73)
65-74	73	49	7	17
Rate*	10.2	9.9	---	14.7
95% C.I.	(7.85-12.52)	(7.13-12.68)	---	(7.72-21.70)
75-84	49	36	7	6
Rate*	11.9	12.9	---	---
95% C.I.	(8.58-15.26)	(8.66-17.07)	---	---
85+	14	9	3	2
Rate*	14.7	---	---	---
95% C.I.	(7.02-22.45)	---	---	---
Unknown	0	0	0	0

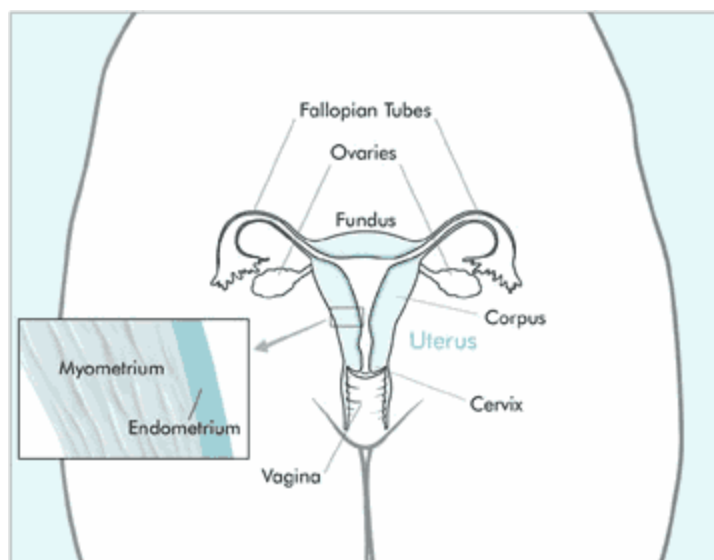
* Rates are per 100,000 age-specific population.

Note: The "----" is used for rates calculated on numbers less than ten.

UTERINE CANCER

GENERAL PROFILE⁴

Figure 167. Anatomical Drawing of Female Reproductive System⁴



General Anatomy: The uterus is part of a woman's reproductive system. It is the hollow, pear-shaped organ where a baby grows. The uterus is in the pelvis between the bladder and the rectum. The narrow, lower portion of the uterus is the cervix. The broad, middle part of the uterus is the body, or corpus. The dome-shaped top of the uterus is the fundus. The fallopian tubes extend from either side of the top of the uterus to the ovaries.

The wall of the uterus has two layers of tissue. The inner layer, or lining, is the endometrium. The outer layer is muscle tissue called the myometrium. In women of childbearing age, the lining of the uterus grows and thickens each month to prepare for pregnancy. If a woman does not become pregnant, the thick, bloody lining flows out of the body through the vagina. This flow is called menstruation.

Risk Factors: Age (Women over 50), Endometrial hyperplasia, Hormone replacement therapy (HRT), Obesity and related conditions, Women taking the drug Tamoxifen, Race (White Females), and Inherited form of Colorectal Cancer.

Signs and Symptoms: Unusual vaginal bleeding or discharge, difficult or painful urination, pain during intercourse, and pain in the pelvic area.

Diagnosing the Cancer: Pelvic exam, Pap test, transvaginal ultrasound, and biopsy.

Treatment: Treatment options include: surgery (Hysterectomy), radiation therapy and hormonal therapy.

Table 259. Uterine Cancer Cases by Gender, Race/Ethnicity and County/Region of Residence at Diagnosis, Nevada Residents (2000-2004) and SEER-17 (2000-2004)

Category	County/Region of Residence					SEER 17 (2000-2004)
	Nevada Total	Clark	Washoe	All Other Counties	Unknown	
Total						
Cases	1,033	717	159	157	0	45,110
Rate*	9.7	9.8	9.4	9.6	---	12.5
95% C.I.	(9.1-10.3)	(9.1-10.6)	(8.0-11.0)	(8.1-11.2)	---	(12.4-12.7)
Gender						
Male	---	---	---	---	---	---
Rate*	---	---	---	---	---	---
95% C.I.	---	---	---	---	---	---
Female	1,033	717	159	157	0	45,110
Rate*	18.8	18.9	18.0	18.6	---	23.1
95% C.I.	(17.6-20.0)	(17.6-20.4)	(15.3-21.1)	(15.8-21.8)	---	(22.9-23.3)
Other/Unknown	0	0	0	0	0	0
Race/Ethnicity						
White	880	592	142	146	0	38,338
Rate*	20.5	21.3	19.1	19.1	---	24.2
95% C.I.	(19.2-21.9)	(19.6-23.1)	(16.1-22.6)	(16.1-22.7)	---	(23.9-24.4)
Black	38	36	1	1	0	3,423
Rate*	13.1	13.3	---	---	---	19.4
95% C.I.	(9.2-18.5)	(9.2-19.1)	---	---	---	(18.8-20.1)
Native American	7	0	5	2	0	201
Rate*	---	---	---	---	---	10.8
95% C.I.	---	---	---	---	---	(9.3-12.6)
Asian	45	35	6	4	0	2,758
Rate*	12.1	11.3	---	---	---	16.1
95% C.I.	(8.7-16.6)	(7.8-16.2)	---	---	---	(15.5-16.7)
Hispanic	50	41	5	4	0	3,860
Rate*	9.4	9.3	---	---	---	17.3
95% C.I.	(6.7-13.3)	(6.5-13.2)	---	---	---	(16.7-17.9)
Other/Unknown	13	13	0	0	0	390

* Rates are per 100,000 age-specific female population.

Note: The "---" is used for rates calculated on numbers less than ten and SEER numbers less than five. See Technical Notes for more information.

Table 260. Uterine Cancer Inpatient Discharges by Gender, Charges, Length of Stay, and County/Region of Residence, Nevada Residents, 2000-2004

Category	County/Region of Residence				
	Nevada Total	Clark	Washoe	All Other Counties	Unknown
Total					
Discharges	946	652	161	133	0
Rate*	8.8	8.8	9.5	8.1	---
95% C.I.	(8.3-9.4)	(8.1-9.5)	(8.1-11.1)	(6.8-9.6)	---
Gender					
Male	---	---	---	---	---
Rate*	---	---	---	---	---
95% C.I.	---	---	---	---	---
Female	946	652	161	133	0
Rate*	17.1	17.1	18.3	15.7	---
95% C.I.	(16.1-18.3)	(15.8-18.5)	(15.6-21.4)	(13.1-18.7)	---
Other/Unknown	0	0	0	0	0
Inpatient Discharge Charges (\$)					
Total Charges	\$32,282,509	\$21,957,763	\$5,534,909	\$4,789,837	\$0
Average Charges	\$34,125	\$33,678	\$34,378	\$36,014	\$0
Median Charges	\$26,896	\$25,680	\$34,123	\$28,690	\$0
Discharge Length of Stay (LOS) (Days)					
Total LOS	4,306	3,039	670	597	0
Average LOS	4.6	4.7	4.2	4.5	0.0
Median LOS	3.0	3.5	3.0	3.0	0.0

* Rates are per 100,000 population and are age-adjusted to the 2000 US Standard population.

Note: The "---" is used for rates calculated on numbers less than ten. Caution should be used when comparing inpatient hospital discharge data to other data sources, since it is occurrence-based data. Please See Technical Notes for more information.

Table 261. Uterine Cancer Mortality by Age Group and County/Region of Residence, Nevada Residents, 2000-2004

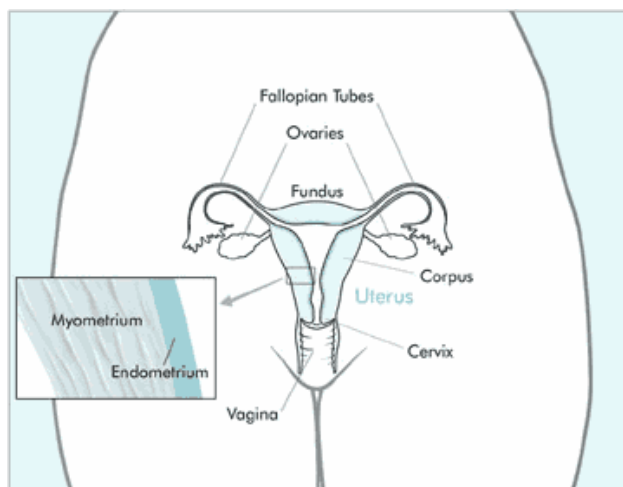
Category	County/Region of Residence			
	Nevada Total	Clark	Washoe	All Other Counties
Total				
Deaths	155	119	17	19
Rate*	3.0	3.4	2.1	2.3
95% C.I.	(2.5-3.5)	(2.8-4.0)	(1.2-3.3)	(1.4-3.7)
Age Group				
<1	0	0	0	0
Rate*	---	---	---	---
95% C.I.	---	---	---	---
1-4	0	0	0	0
Rate*	---	---	---	---
95% C.I.	---	---	---	---
5-14	0	0	0	0
Rate*	---	---	---	---
95% C.I.	---	---	---	---
15-24	0	0	0	0
Rate*	---	---	---	---
95% C.I.	---	---	---	---
25-34	2	2	0	0
Rate*	---	---	---	---
95% C.I.	---	---	---	---
35-44	7	7	0	0
Rate*	---	---	---	---
95% C.I.	---	---	---	---
45-54	18	16	1	1
Rate*	2.4	3.2	---	---
95% C.I.	(1.32-3.57)	(1.64-4.80)	---	---
55-64	26	20	2	4
Rate*	4.7	5.2	---	---
95% C.I.	(2.89-6.50)	(2.91-7.46)	---	---
65-74	41	32	5	4
Rate*	11.3	12.7	---	---
95% C.I.	(7.83-14.73)	(8.32-17.13)	---	---
75-84	36	25	4	7
Rate*	16.0	16.4	---	---
95% C.I.	(10.76-21.20)	(9.94-22.77)	---	---
85+	25	17	5	3
Rate*	39.5	41.6	---	---
95% C.I.	(24.03-55.02)	(21.82-61.35)	---	---
Unknown	0	0	0	0

* Rates are per 100,000 age-specific female population.
 Note: The "----" is used for rates calculated on numbers less than ten.

OVARIAN CANCER

GENERAL PROFILE⁴

Figure 168. Anatomical Drawing of Female Reproductive System⁴



General Anatomy: The ovaries are a pair of organs in the female reproductive system. They are located in the pelvis, one on each side of the uterus. Each ovary is about the size and shape of an almond. The ovaries have two functions: they produce eggs and female hormones (chemicals that control the way certain cells or organs function).

Every month, during the menstrual cycle, an egg is released from one ovary in a process called ovulation. The egg travels from the ovary through the fallopian tube to the uterus. The ovaries are also the main source of the female hormones estrogen and progesterone, which influence the development of a woman's breasts, body shape, and body hair. They also regulate the menstrual cycle and pregnancy.

Risk Factors: Family History, Age (Women over 50, especially over 60), Women who never had children, Personal history of Breast or Colorectal Cancer, Use of Fertility drugs, Use of Talc, and Hormone replacement therapy (HRT).

Signs and Symptoms: General abdominal discomfort and/or pain (gas, indigestion, pressure, swelling, bloating, cramps), Nausea, diarrhea, constipation, or frequent urination, Loss of appetite, Feeling of fullness even after a light meal, Weight gain or loss with no known reason, and Abnormal bleeding from the vagina.

Diagnosing the Cancer: Pelvic exam, ultrasound, CA-125 assay blood test, lower gastrointestinal (GI) series, or barium enema (Colon and Rectum X-rays), CT (or CAT) scan, and biopsy.

Treatment: Surgery (hysterectomy with bilateral Salpingo-oophorectomy), chemotherapy, radiation therapy, and clinical trials.

Table 262. Ovarian Cancer Cases by Gender, Race/Ethnicity and County/Region of Residence at Diagnosis, Nevada Residents (2000-2004) and SEER-17 (2000-2004)

Category	County/Region of Residence					
	Nevada Total	Clark	Washoe	All Other Counties	Unknown	SEER 17 (2000-2004)
Total						
Cases	734	516	123	94	1	26,546
Rate*	7.0	7.1	7.4	6.0	---	7.4
95% C.I.	(6.5-7.5)	(6.5-7.8)	(6.1-8.9)	(4.8-7.4)	---	(7.3-7.5)
Gender						
Male	---	---	---	---	---	---
Rate*	---	---	---	---	---	---
95% C.I.	---	---	---	---	---	---
Female	734	516	123	94	1	26,546
Rate*	13.4	13.8	14.1	11.7	---	13.5
95% C.I.	(12.5-14.5)	(12.6-15.0)	(11.7-16.8)	(9.5-14.5)	---	(13.4-13.7)
Other/Unknown	0	0	0	0	0	0
Race/Ethnicity						
White	617	428	106	83	0	22,790
Rate*	14.6	15.5	14.3	11.7	---	14.3
95% C.I.	(13.4-15.8)	(14.0-17.1)	(11.7-17.4)	(9.2-14.6)	---	(14.1-14.5)
Black	28	23	4	1	0	1,833
Rate*	10.6	8.8	---	---	---	10.1
95% C.I.	(6.9-15.9)	(5.5-13.9)	---	---	---	(9.7-10.6)
Native American	5	0	0	5	0	141
Rate*	---	---	---	---	---	7.8
95% C.I.	---	---	---	---	---	(6.5-9.3)
Asian	32	28	3	1	0	1,644
Rate*	8.8	9.1	---	---	---	9.7
95% C.I.	(6.0-12.9)	(6.0-13.3)	---	---	---	(9.3-10.2)
Hispanic	49	35	10	4	0	2,594
Rate*	8.2	7.7	13.9	---	---	11.5
95% C.I.	(5.9-11.5)	(5.1-11.4)	(6.2-29.6)	---	---	(11.0-12.0)
Other/Unknown	3	2	0	0	1	138

* Rates are per 100,000 age-specific female population.

Note: The "---" is used for rates calculated on numbers less than ten and SEER numbers less than five. See Technical Notes for more information.

Table 263. Ovarian Cancer Inpatient Discharges by Gender, Charges, Length of Stay, and County/Region of Residence, Nevada Residents, 2000-2004

Category	County/Region of Residence				
	Nevada Total	Clark	Washoe	All Other Counties	Unknown
Total					
Discharges	721	491	145	84	1
Rate*	6.7	6.7	8.5	5.3	---
95% C.I.	(6.2-7.2)	(6.1-7.3)	(7.2-10.1)	(4.2-6.7)	---
Gender					
Male	---	---	---	---	---
Rate*	---	---	---	---	---
95% C.I.	---	---	---	---	---
Female	721	491	145	84	1
Rate*	13.1	12.9	16.4	10.6	---
95% C.I.	(12.1-14.1)	(11.8-14.2)	(13.9-19.4)	(8.4-13.2)	---
Other/Unknown	0	0	0	0	0
Inpatient Discharge Charges (\$)					
Total Charges	\$44,972,093	\$28,517,658	\$12,067,132	\$4,308,828	\$78,475
Average Charges	\$62,375	\$58,081	\$83,222	\$51,296	\$78,475
Median Charges	\$40,741	\$36,256	\$60,309	\$39,423	\$78,475
Discharge Length of Stay (LOS) (Days)					
Total LOS	6,217	3,811	1,726	657	23
Average LOS	8.6	7.8	11.9	7.8	23.0
Median LOS	6.0	6.0	9.0	7.0	23.0

* Rates are per 100,000 population and are age-adjusted to the 2000 US Standard population.

Note: The "---" is used for rates calculated on numbers less than ten. Caution should be used when comparing inpatient hospital discharge data to other data sources, since it is occurrence-based data. Please See Technical Notes for more information.

Table 264. Ovarian Cancer Mortality by Age Group and County/Region of Residence, Nevada Residents, 2000-2004

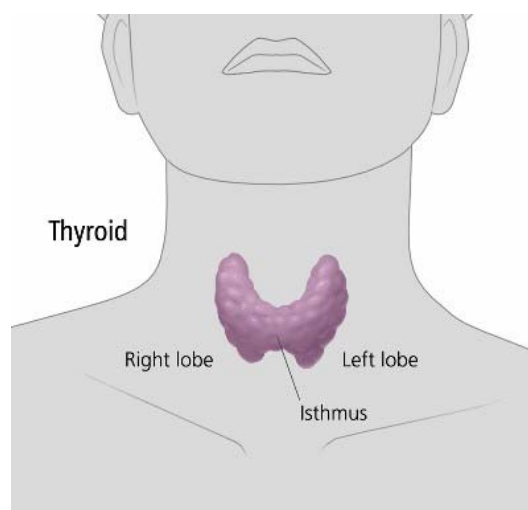
Category	County/Region of Residence			
	Nevada Total	Clark	Washoe	All Other Counties
Total				
Deaths	456	321	77	58
Rate*	8.5	8.7	9.1	6.9
95% C.I.	(7.7-9.3)	(7.8-9.7)	(7.1-11.4)	(5.2-9.0)
Age Group				
<1	0	0	0	0
Rate*	---	---	---	---
95% C.I.	---	---	---	---
1-4	0	0	0	0
Rate*	---	---	---	---
95% C.I.	---	---	---	---
5-14	0	0	0	0
Rate*	---	---	---	---
95% C.I.	---	---	---	---
15-24	0	0	0	0
Rate*	---	---	---	---
95% C.I.	---	---	---	---
25-34	2	1	1	0
Rate*	---	---	---	---
95% C.I.	---	---	---	---
35-44	17	13	2	2
Rate*	2.1	2.3	---	---
95% C.I.	(1.09-3.06)	(1.04-3.51)	---	---
45-54	52	42	7	3
Rate*	7.1	8.5	---	---
95% C.I.	(5.14-8.98)	(5.90-11.02)	---	---
55-64	106	71	15	20
Rate*	19.2	18.4	17.5	24.3
95% C.I.	(15.51-22.80)	(14.13-22.70)	(8.65-26.38)	(13.66-34.98)
65-74	128	95	22	11
Rate*	35.2	37.8	40.4	19.1
95% C.I.	(29.11-41.31)	(30.18-45.38)	(23.52-57.29)	(7.81-30.38)
75-84	117	82	20	15
Rate*	51.9	53.7	55.5	41.2
95% C.I.	(42.51-61.33)	(42.04-65.26)	(31.15-79.75)	(20.35-62.04)
85+	34	17	10	7
Rate*	53.8	41.6	84.3	---
95% C.I.	(35.69-71.83)	(21.82-61.35)	(32.06-136.59)	---
Unknown	0	0	0	0

* Rates are per 100,000 age-specific female population.
 Note: The "----" is used for rates calculated on numbers less than ten.

THYROID GLAND CANCER

GENERAL PROFILE⁴

Figure 169. Anatomical Drawing of the Thyroid Gland⁴



General Anatomy: The thyroid is a gland in the neck. It has two kinds of cells that make hormones. Follicular cells make thyroid hormone, which affects heart rate, body temperature, and energy level. C cells make calcitonin, a hormone that helps control the level of calcium in the blood. The thyroid is shaped like a butterfly and lies at the front of the neck, beneath the voice box (larynx). It has two parts, or lobes. The two lobes are separated by a thin section called the isthmus. A healthy thyroid is a little larger than a quarter. It usually cannot be felt through the skin. A swollen lobe might look or feel like a lump in the front of the neck. A swollen thyroid is called a goiter. Most goiters are caused by not enough iodine in the diet.

Risk Factors: Exposure to radiation, Family history, Being female, Age (over 40), Race (Whites are more likely to be diagnosed with Thyroid Cancer than Blacks, as a racial/ethnic group,), and not enough iodine in the diet.

Signs and Symptoms: A lump, or nodule, in the front of the neck near the Adam's apple, hoarseness or difficulty speaking in a normal voice, swollen lymph nodes, especially in the neck, difficulty swallowing or breathing, or pain in the throat or neck.

Diagnosing the Cancer: Physical exam, blood tests, ultrasonography, radionuclide scanning, and fine-needle aspiration.

Treatment: surgery (Total thyroidectomy, Lobectomy), radioactive iodine, hormone treatment, external radiation, and chemotherapy.

Table 265. Thyroid Gland Cancer Cases by Gender, Race/Ethnicity and County/Region of Residence at Diagnosis, Nevada Residents (2000-2004) and SEER-17 (2000-2004)

Category	County/Region of Residence					SEER 17 (2000-2004)
	Nevada Total	Clark	Washoe	All Other Counties	Unknown	
Total						
Cases	1,126	814	196	115	1	31,505
Rate*	10.1	10.5	10.7	7.4	---	8.5
95% C.I.	(9.5-10.7)	(9.8-11.3)	(9.2-12.3)	(6.1-8.9)	---	(8.4-8.6)
Gender						
Male	245	172	41	31	1	7,579
Rate*	4.4	4.6	4.3	3.8	---	4.4
95% C.I.	(3.9-5.1)	(3.9-5.4)	(3.1-5.9)	(2.6-5.5)	---	(4.3-4.5)
Female	881	642	155	84	0	23,926
Rate*	16.0	16.7	17.2	11.1	---	12.5
95% C.I.	(15.0-17.1)	(15.4-18.1)	(14.6-20.1)	(8.8-13.9)	---	(12.3-12.6)
Other/Unknown	0	0	0	0	0	0
Race/Ethnicity						
White	881	608	167	105	1	26,249
Rate*	11.4	12.0	11.9	8.2	---	8.9
95% C.I.	(10.6-12.2)	(11.1-13.0)	(10.1-13.9)	(6.6-10.0)	---	(8.8-9.0)
Black	43	39	4	0	0	1,867
Rate*	6.3	6.2	---	---	---	5.1
95% C.I.	(4.5-8.7)	(4.3-8.6)	---	---	---	(4.9-5.3)
Native American	3	0	2	1	0	163
Rate*	---	---	---	---	---	3.7
95% C.I.	---	---	---	---	---	(3.2-3.2)
Asian	83	66	15	2	0	2,872
Rate*	12.9	12.9	14.6	---	---	8.5
95% C.I.	(10.0-17.5)	(9.5-18.7)	(8.1-24.4)	---	---	(8.2-8.8)
Hispanic	95	83	6	6	0	4,229
Rate*	6.0	6.8	---	---	---	7.5
95% C.I.	(4.7-7.6)	(5.2-8.7)	---	---	---	(7.2-7.7)
Other/Unknown	21	18	2	1	0	354

* Rates are per 100,000 age-specific population.

Note: The "----" is used for rates calculated on numbers less than ten and SEER numbers less than five. See Technical Notes for more information.

Table 266. Thyroid Gland Cancer Inpatient Discharges by Gender, Charges, Length of Stay, and County/Region of Residence, Nevada Residents, 2000-2004

Category	County/Region of Residence				
	Nevada Total	Clark	Washoe	All Other Counties	Unknown
Total					
Discharges	1,570	1,312	161	97	0
Rate*	14.1	16.9	8.8	6.2	---
95% C.I.	(13.4-14.8)	(16.0-17.9)	(7.4-10.2)	(5.0-7.7)	---
Gender					
Male	332	272	34	26	0
Rate*	6.0	7.2	3.6	3.1	---
95% C.I.	(5.4-6.8)	(6.3-8.2)	(2.5-5.0)	(2.0-4.7)	---
Female	1,238	1,040	127	71	0
Rate*	22.5	27.1	14.1	9.4	---
95% C.I.	(21.3-23.8)	(25.5-28.8)	(11.7-16.7)	(7.3-11.9)	---
Other/Unknown	0	0	0	0	0
Inpatient Discharge Charges (\$)					
Total Charges	\$23,968,521	\$19,591,628	\$2,892,023	\$1,484,870	\$0
Average Charges	\$15,267	\$14,933	\$17,963	\$15,308	\$0
Median Charges	\$12,740	\$11,990	\$15,993	\$13,963	\$0
Discharge Length of Stay (LOS) (Days)					
Total LOS	3,179	2,644	349	186	0
Average LOS	2.0	2.0	2.2	1.9	0.0
Median LOS	2.0	2.0	2.0	2.0	0.0

* Rates are per 100,000 population and are age-adjusted to the 2000 US Standard population.

Note: The "---" is used for rates calculated on numbers less than ten. Caution should be used when comparing inpatient hospital discharge data to other data sources, since it is occurrence-based data. Please See Technical Notes for more information.

Table 267. Thyroid Gland Cancer Mortality by Age Group and County/Region of Residence, Nevada Residents, 2000-2004

Category	County/Region of Residence			
	Nevada Total	Clark	Washoe	All Other Counties
Total				
Deaths	29	24	3	2
Rate*	0.3	0.4	0.0	0.0
95% C.I.	(0.2-0.4)	(0.2-0.6)	---	---
Age Group				
<1	0	0	0	0
Rate*	---	---	---	---
95% C.I.	---	---	---	---
1-4	0	0	0	0
Rate*	---	---	---	---
95% C.I.	---	---	---	---
5-14	0	0	0	0
Rate*	---	---	---	---
95% C.I.	---	---	---	---
15-24	0	0	0	0
Rate*	---	---	---	---
95% C.I.	---	---	---	---
25-34	0	0	0	0
Rate*	---	---	---	---
95% C.I.	---	---	---	---
35-44	1	1	0	0
Rate*	---	---	---	---
95% C.I.	---	---	---	---
45-54	3	2	0	1
Rate*	---	---	---	---
95% C.I.	---	---	---	---
55-64	6	4	2	0
Rate*	---	---	---	---
95% C.I.	---	---	---	---
65-74	8	7	0	1
Rate*	---	---	---	---
95% C.I.	---	---	---	---
75-84	9	8	1	0
Rate*	---	---	---	---
95% C.I.	---	---	---	---
85+	2	2	0	0
Rate*	---	---	---	---
95% C.I.	---	---	---	---
Unknown	0	0	0	0

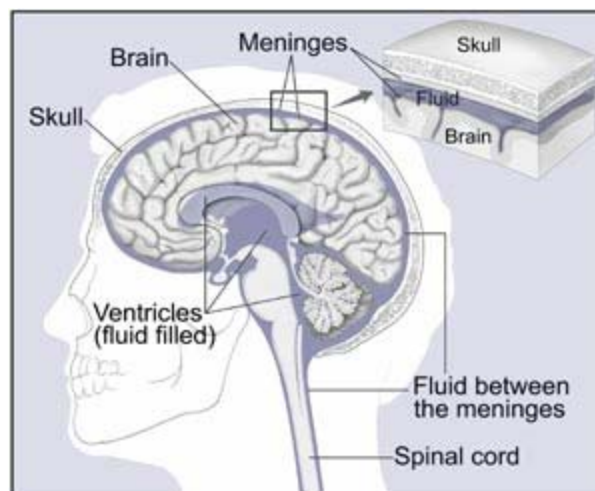
* Rates are per 100,000 age-specific population.

Note: The "----" is used for rates calculated on numbers less than ten.

BRAIN AND OTHER CENTRAL NERVOUS SYSTEM CANCER

GENERAL PROFILE⁴

Figure 170. Anatomical Drawing of the Brain and Nearby Structures⁴



General Anatomy: The brain is a soft, spongy mass of tissue. It is protected by the bones of the skull and three thin membranes called meninges. Watery fluid called cerebrospinal fluid cushions the brain. This fluid flows through spaces between the meninges and through spaces within the brain called ventricles. A network of nerves carries messages back and forth between the brain and the rest of the body. Some nerves go directly from the brain to the eyes, ears, and other parts of the head. Other nerves run through the spinal cord to connect the brain with the other parts of the body. Within the brain and spinal cord, glial cells surround nerve cells and hold them in place.

Risk Factors: Being male, being white, age (over 70 years of age), family history, and exposure to: radiation or certain chemicals: formaldehyde, vinyl chloride, and acrylonitrile.

Signs and Symptoms: Headaches (usually worse in the morning), nausea or vomiting, changes in speech, vision, or hearing, problems balancing or walking, changes in mood, personality, or ability to concentrate, problems with memory, muscle jerking or twitching (seizures or convulsions), and numbness or tingling in the arms or legs.

Diagnosing the Cancer: Physical exam, neurologic exam, computed tomography (CAT) scan, magnetic resonance imaging (MRI), angiogram, skull x-ray, spinal tap, myelogram, and biopsy.

Treatment: surgery (Craniotomy), radiation therapy (Fractionation, Hyperfractionation, Stereotactic, 3-dimensional conformal, and Proton beam), and chemotherapy

Table 268. Brain and Other Central Nervous System Cancer Cases by Gender, Race/Ethnicity and County/Region of Residence at Diagnosis, Nevada Residents (2000-2004) and SEER-17 (2000-2004)

Category	County/Region of Residence					SEER 17 (2000-2004)
	Nevada Total	Clark	Washoe	All Other Counties	Unknown	
Total						
Cases	663	430	118	115	0	23,505
Rate*	6.3	5.9	7.0	7.5	---	6.4
95% C.I.	(5.8-6.8)	(5.3-6.5)	(5.8-8.5)	(6.0-9.8)	---	(6.4-6.5)
Gender						
Male	385	242	76	67	0	12,996
Rate*	7.5	6.8	9.1	8.5	---	7.7
95% C.I.	(6.7-8.3)	(6.0-7.9)	(7.1-11.7)	(6.6-11.1)	---	(7.5-7.8)
Female	278	188	42	48	0	10,509
Rate*	5.2	5.1	4.8	6.5	---	5.4
95% C.I.	(4.6-5.9)	(4.4-5.9)	(3.5-6.5)	(4.4-10.7)	---	(5.3-5.5)
Other/Unknown	0	0	0	0	0	0
Race/Ethnicity						
White	545	336	102	107	0	20,695
Rate*	6.9	6.5	7.4	7.6	---	7.1
95% C.I.	(6.3-7.5)	(5.8-7.3)	(6.0-9.0)	(6.2-9.3)	---	(7.0-7.1)
Black	29	26	2	1	0	1,484
Rate*	4.7	4.6	---	---	---	4.1
95% C.I.	(3.0-7.3)	(2.9-7.5)	---	---	---	(3.9-4.3)
Native American	0	0	0	0	0	85
Rate*	---	---	---	---	---	2.2
95% C.I.	---	---	---	---	---	(1.7-1.7)
Asian	20	17	2	1	0	1,073
Rate*	3.2	3.2	---	---	---	3.4
95% C.I.	(1.9-5.2)	(1.8-5.3)	---	---	---	(3.2-3.6)
Hispanic	59	43	12	4	0	2,869
Rate*	4.8	3.8	7.6	---	---	5.3
95% C.I.	(3.3-7.1)	(2.5-5.7)	(2.3-21.9)	---	---	(5.1-5.5)
Other/Unknown	10	8	0	2	0	168

* Rates are per 100,000 age-specific population.

Note: The "----" is used for rates calculated on numbers less than ten and SEER numbers less than five. See Technical Notes for more information.

Table 269. Brain and Other Central Nervous System Cancer Inpatient Discharges by Gender, Charges, Length of Stay, and County/Region of Residence, Nevada Residents, 2000-2004

Category	County/Region of Residence				
	Nevada Total	Clark	Washoe	All Other Counties	Unknown
Total					
Discharges	946	676	129	141	0
Rate*	8.8	9.1	7.4	8.8	---
95% C.I.	(8.2-9.4)	(8.4-9.8)	(6.2-8.8)	(7.4-10.5)	---
Gender					
Male	524	359	85	80	0
Rate*	9.8	9.7	9.7	10.2	---
95% C.I.	(9.0-10.8)	(8.7-10.8)	(7.7-12.3)	(8.0-12.9)	---
Female	422	317	44	61	0
Rate*	7.8	8.5	5.0	7.6	---
95% C.I.	(7.1-8.6)	(7.6-9.5)	(3.6-6.7)	(5.8-9.8)	---
Other/Unknown	0	0	0	0	0
Inpatient Discharge Charges (\$)					
Total Charges	\$47,679,851	\$36,154,520	\$5,551,517	\$5,973,814	\$0
Average Charges	\$50,402	\$53,483	\$43,035	\$42,367	\$0
Median Charges	\$37,562	\$38,316	\$37,060	\$31,538	\$0
Discharge Length of Stay (LOS) (Days)					
Total LOS	7,068	5,113	978	977	0
Average LOS	7.5	7.6	7.6	6.9	0.0
Median LOS	5.0	5.0	5.0	5.0	0.0

* Rates are per 100,000 population and are age-adjusted to the 2000 US Standard population.

Note: The "----" is used for rates calculated on numbers less than ten. Caution should be used when comparing inpatient hospital discharge data to other data sources, since it is occurrence-based data. Please See Technical Notes for more information.

Table 270. Brain and Other Central Nervous System Cancer Mortality by Age Group and County/Region of Residence, Nevada Residents, 2000-2004

Category	County/Region of Residence			
	Nevada Total	Clark	Washoe	All Other Counties
Total				
Deaths	415	277	63	75
Rate*	4.0	3.9	3.8	4.7
95% C.I.	(3.6-4.4)	(3.4-4.4)	(2.9-4.9)	(3.7-6.0)
Age Group				
<1	0	0	0	0
Rate*	---	---	---	---
95% C.I.	---	---	---	---
1-4	6	4	1	1
Rate*	---	---	---	---
95% C.I.	---	---	---	---
5-14	6	3	2	1
Rate*	---	---	---	---
95% C.I.	---	---	---	---
15-24	11	7	3	1
Rate*	0.7	---	---	---
95% C.I.	(0.29-1.12)	---	---	---
25-34	13	10	2	1
Rate*	0.8	0.8	---	---
95% C.I.	(0.37-1.24)	(0.32-1.35)	---	---
35-44	29	16	7	6
Rate*	1.7	1.3	---	---
95% C.I.	(1.08-2.32)	(0.68-1.98)	---	---
45-54	58	43	8	7
Rate*	3.9	4.3	---	---
95% C.I.	(2.88-4.88)	(2.99-5.54)	---	---
55-64	90	60	13	17
Rate*	8.2	8.0	7.5	10.2
95% C.I.	(6.54-9.95)	(5.96-10.00)	(3.42-11.55)	(5.36-15.07)
65-74	96	67	14	15
Rate*	13.4	13.5	13.1	13.0
95% C.I.	(10.71-16.07)	(10.30-16.79)	(6.26-20.02)	(6.41-19.55)
75-84	85	56	7	22
Rate*	20.7	20.0	---	32.4
95% C.I.	(16.28-25.08)	(14.77-25.26)	---	(18.87-45.97)
85+	21	11	6	4
Rate*	22.1	18.1	---	---
95% C.I.	(12.65-31.56)	(7.39-28.75)	---	---
Unknown	0	0	0	0

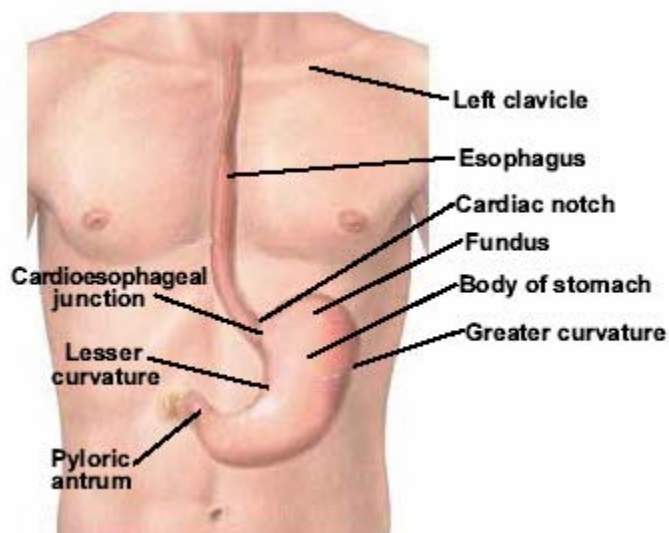
* Rates are per 100,000 age-specific population.

Note: The "----" is used for rates calculated on numbers less than ten.

STOMACH CANCER

GENERAL PROFILE⁴

Figure 171. Anatomical Drawing of the Esophagus and Stomach⁵



General Anatomy: The stomach is part of the digestive system. It is located in the upper abdomen, under the ribs. The upper part of the stomach connects to the esophagus, and the lower part leads into the small intestine. When food enters the stomach, muscles in the stomach wall create a rippling motion that mixes and mashes the food. At the same time, juices made by glands in the lining of the stomach help digest the food. After about 3 hours, the food becomes a liquid and moves into the small intestine, where digestion continues.

Risk Factors: While the cause of Stomach Cancer is still unknown, some people are more likely to be diagnosed with Stomach Cancer. It is more common in: people over 55 years of age, males, Blacks as a racial/ethnic group, and people who have had stomach surgery or have pernicious anemia, achlorhydria, or gastric atrophy (which generally result in lower than normal amounts of digestive juices) have an increased risk. Stomach Cancer is also more common in parts of the world like Japan, Korea, parts of Eastern Europe, and Latin America than in the United States.

Signs and Symptoms: Indigestion or a burning sensation (heartburn), discomfort or pain in the abdomen, nausea and vomiting, diarrhea or constipation, bloating of the stomach after meals, loss of appetite, weakness and fatigue, and bleeding (vomiting blood or having blood in the stool).

Diagnosing the Cancer: Fecal occult blood test, upper gastrointestinal (GI) x-ray series, and endoscopy are some of the common ways of diagnosing Stomach Cancer.

Treatment: surgery (Gastrectomy), chemotherapy, radiation therapy, and biological therapy.

Table 271. Stomach Cancer Cases by Gender, Race/Ethnicity and County/Region of Residence at Diagnosis, Nevada Residents (2000-2004) and SEER-17 (2000-2004)

Category	County/Region of Residence					
	Nevada Total	Clark	Washoe	All Other Counties	Unknown	SEER 17 (2000-2004)
Total						
Cases	639	462	102	74	1	28,598
Rate*	6.4	6.8	6.4	4.7	---	8.1
95% C.I.	(5.9-6.9)	(6.2-7.5)	(5.2-7.8)	(3.7-6.0)	---	(8.0-8.2)
Gender						
Male	421	300	71	50	0	17,355
Rate*	8.9	9.3	9.8	6.2	---	11.4
95% C.I.	(8.0-9.9)	(8.2-10.6)	(7.5-12.7)	(4.6-8.4)	---	(11.3-11.6)
Female	218	162	31	24	1	11,243
Rate*	4.2	4.6	3.6	3.0	---	5.6
95% C.I.	(3.7-4.8)	(3.9-5.3)	(2.5-5.2)	(1.9-4.6)	---	(5.5-5.7)
Other/Unknown	0	0	0	0	0	0
Race/Ethnicity						
White	478	329	81	68	0	20,827
Rate*	5.9	6.2	5.9	4.7	---	7.1
95% C.I.	(5.4-6.4)	(5.5-6.9)	(4.7-7.4)	(3.6-6.1)	---	(7.0-7.2)
Black	58	54	4	0	0	3,568
Rate*	11.6	11.6	---	---	---	12.5
95% C.I.	(8.7-15.5)	(8.5-15.7)	---	---	---	(12.1-13.0)
Native American	1	0	1	0	0	221
Rate*	---	---	---	---	---	7.8
95% C.I.	---	---	---	---	---	(6.8-6.8)
Asian	39	33	4	1	1	3,835
Rate*	7.7	8.2	---	---	---	14.3
95% C.I.	(5.4-10.8)	(5.5-11.9)	---	---	---	(13.8-14.7)
Hispanic	56	42	9	5	0	4,338
Rate*	7.8	7.5	---	---	---	12.3
95% C.I.	(5.5-11.0)	(5.0-11.3)	---	---	---	(11.9-12.7)
Other/Unknown	7	4	3	0	0	147

* Rates are per 100,000 age-specific population.

Note: The "---" is used for rates calculated on numbers less than ten and SEER numbers less than five. See Technical Notes for more information.

Table 272. Stomach Cancer Inpatient Discharges by Gender, Charges, Length of Stay, and County/Region of Residence, Nevada Residents, 2000-2004

Category	County/Region of Residence				
	Nevada Total	Clark	Washoe	All Other Counties	Unknown
Total					
Discharges	597	448	91	58	0
Rate*	5.8	6.3	5.6	3.8	---
95% C.I.	(5.3-6.3)	(5.7-7.0)	(4.5-6.9)	(2.8-4.9)	---
Gender					
Male	409	312	58	39	0
Rate*	8.2	9.2	7.5	5.0	---
95% C.I.	(7.4-9.1)	(8.1-10.4)	(5.6-10.0)	(3.5-7.0)	---
Female	188	136	33	19	0
Rate*	3.6	3.7	3.9	2.4	---
95% C.I.	(3.1-4.1)	(3.1-4.4)	(2.7-5.5)	(1.4-3.8)	---
Other/Unknown	0	0	0	0	0
Inpatient Discharge Charges (\$)					
Total Charges	\$40,467,096	\$31,023,880	\$5,894,195	\$3,549,021	\$0
Average Charges	\$67,784	\$69,250	\$64,771	\$61,190	\$0
Median Charges	\$46,095	\$47,289	\$44,733	\$36,127	\$0
Discharge Length of Stay (LOS) (Days)					
Total LOS	6,669	5,040	1,047	582	0
Average LOS	11.2	11.3	11.5	10.0	0.0
Median LOS	9.0	9.0	9.0	8.0	0.0

* Rates are per 100,000 population and are age-adjusted to the 2000 US Standard population.

Note: The "---" is used for rates calculated on numbers less than ten. Caution should be used when comparing inpatient hospital discharge data to other data sources, since it is occurrence-based data. Please See Technical Notes for more information.

Table 273. Stomach Cancer Mortality by Age Group and County/Region of Residence, Nevada Residents, 2000-2004

Category	County/Region of Residence			
	Nevada Total	Clark	Washoe	All Other Counties
Total				
Deaths	346	253	52	41
Rate*	3.6	3.9	3.3	2.7
95% C.I.	(3.2-4.0)	(3.4-4.4)	(2.5-4.4)	(1.9-3.7)
Age Group				
<1	0	0	0	0
Rate*	---	---	---	---
95% C.I.	---	---	---	---
1-4	0	0	0	0
Rate*	---	---	---	---
95% C.I.	---	---	---	---
5-14	0	0	0	0
Rate*	---	---	---	---
95% C.I.	---	---	---	---
15-24	2	1	0	1
Rate*	---	---	---	---
95% C.I.	---	---	---	---
25-34	5	5	0	0
Rate*	---	---	---	---
95% C.I.	---	---	---	---
35-44	11	10	1	0
Rate*	0.7	0.8	---	---
95% C.I.	(0.26-1.03)	(0.32-1.35)	---	---
45-54	35	25	6	4
Rate*	2.3	2.5	---	---
95% C.I.	(1.57-3.12)	(1.51-3.45)	---	---
55-64	51	30	11	10
Rate*	4.7	4.0	6.3	6.0
95% C.I.	(3.39-5.95)	(2.56-5.42)	(2.59-10.08)	(2.28-9.73)
65-74	91	70	14	7
Rate*	12.7	14.2	13.1	---
95% C.I.	(10.09-15.30)	(10.83-17.46)	(6.26-20.02)	---
75-84	107	82	13	12
Rate*	26.0	29.3	20.5	17.7
95% C.I.	(21.10-30.97)	(22.96-35.65)	(9.37-31.69)	(7.68-27.69)
85+	44	30	7	7
Rate*	46.3	49.3	---	---
95% C.I.	(32.63-59.99)	(31.64-66.91)	---	---
Unknown	0	0	0	0

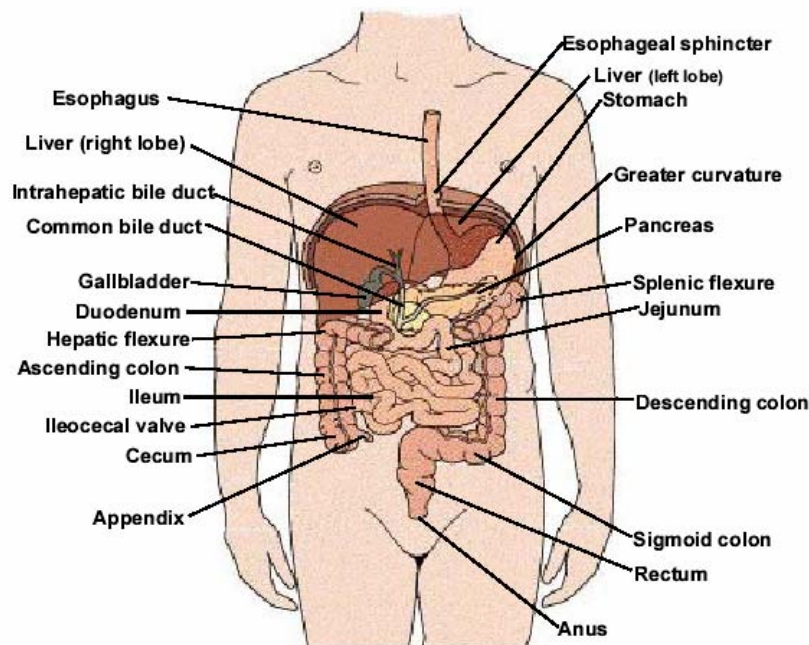
* Rates are per 100,000 age-specific population.

Note: The "----" is used for rates calculated on numbers less than ten.

LIVER AND INTRAHEPATIC BILE DUCTS CANCER

GENERAL PROFILE⁴

Figure 172. Anatomical Drawing of the Digestive System⁵



General Anatomy: The liver is the largest organ in the body. It is found behind the ribs on the right side of the abdomen. The liver has two parts, a right lobe and a smaller left lobe. The liver has many important functions that keep a person healthy. It removes harmful material from the blood. It makes enzymes and bile that help digest food. It also converts food into substances needed for life and growth. The liver gets its supply of blood from two vessels. Most of its blood comes from the hepatic portal vein. The rest comes from the hepatic artery.

Risk Factors: Chronic liver infection (hepatitis), cirrhosis, Aflatoxin (type of mold), being male, family history, and age (over 60 years of age).

Signs and Symptoms: Pain in the upper abdomen on the right side; the pain may extend to the back and shoulder, swollen abdomen (bloating), weight loss, loss of appetite and feelings of fullness, weakness or feeling very tired, nausea and vomiting, yellow skin and eyes and dark urine from jaundice, and fever.

Diagnosing the Cancer: Physical exam, blood tests, computed tomography (CAT) scan, ultrasound test, magnetic resonance imaging (MRI), angiogram, and biopsy.

Treatment: surgery (Hepatectomy, Transplantation), radio frequency ablation, percutaneous ethanol injection, cryosurgery, hepatic arterial infusion, chemoembolization, chemotherapy, and radiation therapy.

Table 274. Liver and Intrahepatic Bile Ducts Cancer Cases by Gender, Race/Ethnicity and County/Region of Residence at Diagnosis, Nevada Residents (2000-2004) and SEER-17 (2000-2004)

Category	County/Region of Residence					SEER 17 (2000-2004)
	Nevada Total	Clark	Washoe	All Other Counties	Unknown	
Total						
Cases	555	398	90	67	0	22,078
Rate*	5.4	5.6	5.5	4.5	---	6.2
95% C.I.	(4.9-5.8)	(5.0-6.2)	(4.4-6.8)	(3.3-6.6)	---	(6.1-6.3)
Gender						
Male	392	277	70	45	0	15,363
Rate*	7.7	8.0	8.9	6.2	---	9.5
95% C.I.	(7.0-8.6)	(7.1-9.1)	(6.9-11.5)	(4.2-10.0)	---	(9.4-9.7)
Female	163	121	20	22	0	6,715
Rate*	3.1	3.4	2.4	2.7	---	3.4
95% C.I.	(2.7-3.7)	(2.8-4.1)	(1.5-3.7)	(1.7-4.2)	---	(3.3-3.5)
Other/Unknown	0	0	0	0	0	0
Race/Ethnicity						
White	402	262	76	64	0	15,267
Rate*	4.9	4.8	5.3	4.9	---	5.2
95% C.I.	(4.4-5.4)	(4.3-5.5)	(4.2-6.7)	(3.5-7.3)	---	(5.1-5.3)
Black	32	31	1	0	0	2,432
Rate*	5.2	5.4	---	---	---	7.6
95% C.I.	(3.5-7.6)	(3.6-7.9)	---	---	---	(7.3-8.0)
Native American	2	1	0	1	0	232
Rate*	---	---	---	---	---	7.1
95% C.I.	---	---	---	---	---	(6.2-6.2)
Asian	63	55	7	1	0	4,021
Rate*	13.1	13.8	---	---	---	13.9
95% C.I.	(9.5-18.6)	(9.7-20.4)	---	---	---	(13.5-14.4)
Hispanic	51	44	6	1	0	3,593
Rate*	7.0	7.5	---	---	---	9.7
95% C.I.	(5.0-9.9)	(5.2-11.2)	---	---	---	(9.4-10.0)
Other/Unknown	5	5	0	0	0	126

* Rates are per 100,000 age-specific population.

Note: The "----" is used for rates calculated on numbers less than ten and SEER numbers less than five. See Technical Notes for more information.

Table 275. Liver and Intrahepatic Bile Ducts Cancer Inpatient Discharges by Gender, Charges, Length of Stay, and County/Region of Residence, Nevada Residents, 2000-2004

Category	County/Region of Residence				
	Nevada Total	Clark	Washoe	All Other Counties	Unknown
Total					
Discharges	379	297	58	23	1
Rate*	3.6	4.1	3.5	1.5	---
95% C.I.	(3.3-4.0)	(3.7-4.7)	(2.7-4.6)	(0.9-2.2)	---
Gender					
Male	257	206	38	12	1
Rate*	4.9	5.7	4.8	1.4	---
95% C.I.	(4.3-5.6)	(4.9-6.6)	(3.4-6.9)	(0.7-2.6)	---
Female	122	91	20	11	0
Rate*	2.4	2.6	2.4	1.4	---
95% C.I.	(2.0-2.9)	(2.1-3.3)	(1.4-3.7)	(0.7-2.5)	---
Other/Unknown	0	0	0	0	0
Inpatient Discharge Charges (\$)					
Total Charges	\$12,734,532	\$10,877,493	\$1,230,212	\$577,331	\$49,496
Average Charges	\$33,600	\$36,625	\$21,211	\$25,101	\$49,496
Median Charges	\$22,134	\$24,422	\$17,305	\$12,643	\$49,496
Discharge Length of Stay (LOS) (Days)					
Total LOS	2,374	1,913	321	127	13
Average LOS	6.3	6.4	5.5	5.5	13.0
Median LOS	5.0	5.0	4.0	4.0	13.0

* Rates are per 100,000 population and are age-adjusted to the 2000 US Standard population.

Note: The "----" is used for rates calculated on numbers less than ten. Caution should be used when comparing inpatient hospital discharge data to other data sources, since it is occurrence-based data. Please See Technical Notes for more information.

Table 276. Liver and Intrahepatic Bile Ducts Cancer Mortality by Age Group and County/Region of Residence, Nevada Residents, 2000-2004

Category	County/Region of Residence			
	Nevada Total	Clark	Washoe	All Other Counties
Total				
Deaths	501	352	80	69
Rate*	4.9	5.1	5.0	4.4
95% C.I.	(4.5-5.4)	(4.5-5.6)	(3.9-6.2)	(3.4-5.7)
Age Group				
<1	1	1	0	0
Rate*	---	---	---	---
95% C.I.	---	---	---	---
1-4	1	1	0	0
Rate*	---	---	---	---
95% C.I.	---	---	---	---
5-14	2	2	0	0
Rate*	---	---	---	---
95% C.I.	---	---	---	---
15-24	3	3	0	0
Rate*	---	---	---	---
95% C.I.	---	---	---	---
25-34	3	2	0	1
Rate*	---	---	---	---
95% C.I.	---	---	---	---
35-44	16	13	1	2
Rate*	0.9	1.1	---	---
95% C.I.	(0.48-1.40)	(0.49-1.67)	---	---
45-54	84	62	17	5
Rate*	5.6	6.2	6.5	---
95% C.I.	(4.42-6.83)	(4.62-7.68)	(3.40-9.57)	---
55-64	83	64	8	11
Rate*	7.6	8.5	---	6.6
95% C.I.	(5.97-9.24)	(6.43-10.60)	---	(2.70-10.52)
65-74	152	103	33	16
Rate*	21.2	20.8	31.0	13.8
95% C.I.	(17.83-24.58)	(16.80-24.84)	(20.41-41.54)	(7.06-20.63)
75-84	125	81	16	28
Rate*	30.4	29.0	25.3	41.3
95% C.I.	(25.08-35.75)	(22.64-35.25)	(12.89-37.65)	(25.98-56.54)
85+	31	20	5	6
Rate*	32.6	32.9	---	---
95% C.I.	(21.14-44.11)	(18.45-47.25)	---	---
Unknown	0	0	0	0

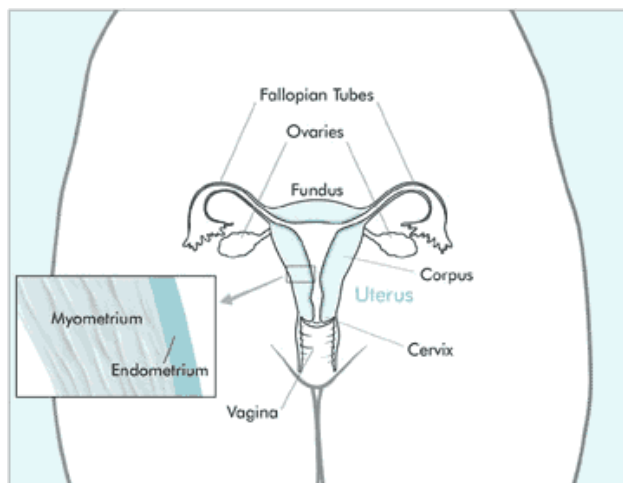
* Rates are per 100,000 age-specific population.

Note: The "----" is used for rates calculated on numbers less than ten.

CERVICAL CANCER

GENERAL PROFILE⁴

Figure 173. Anatomical Drawing of the Female Reproductive System⁴



General Anatomy: The cervix is the lower, narrow part of the uterus (womb). The uterus, a hollow, pear-shaped organ, is located in a woman's lower abdomen, between the bladder and the rectum. The cervix forms a canal that opens into the vagina, which leads to the outside of the body. Cells on the surface of the cervix sometimes appear abnormal but not cancerous. Scientists believe that some abnormal changes in cells on the cervix are the first step in a series of slow changes that can lead to cancer years later. If these changes form abnormal cells that spread deeper into the cervix or to other tissues or organs, the disease is then called cervical cancer, or invasive cervical cancer.

Risk Factors: Researchers believe that, in many cases, cervical cancer develops when two or more risk factors act together. These include: women who began having sexual intercourse before age 18, women who have had many sexual partners, women whose partners began having sexual intercourse at a young age, have had many sexual partners, or were previously married to women who had cervical cancer, some sexually transmitted human papillomaviruses (HPVs), smoking, women whose mothers were given the drug diethylstilbestrol (DES) during pregnancy to prevent miscarriage, weakened immune systems, and the use of oral contraceptives (the pill).

Signs and Symptoms: Precancerous changes of the cervix usually do not cause pain. In fact, they generally do not cause any symptoms until abnormal cervical cells become cancerous and invade nearby tissue, unless a woman has a pelvic exam and a Pap test. Symptoms include: abnormal bleeding (longer and heavier than usual), bleeding after menopause, and increased vaginal discharge is another symptom of cervical cancer.

Diagnosing the Cancer: Pap Smear tests (Early Detection), colposcopy, endocervical curettage, conization, dilation and curettage,

Treatment: Surgery (Hysterectomy), cryosurgery, cauterization, laser surgery, conization, radiation therapy, and chemotherapy.

Table 277. Cervical Cancer Screening by County/Region of Residence, Education, Age Group, and Income, Nevada Residents, 2000, 2002 and 2004

Responses	Answers						Total
	Yes			No			
	Number	Percent*	95% C.I.	Number	Percent*	95% C.I.	
Total							
Responses	3,942	94.7%	(93.6-95.8)	177	5.3%	(4.2-6.4)	4,119
County/Region of Residence							
Clark County	1,289	95.3%	(93.8-96.7)	50	4.7%	(3.3-6.2)	1,339
Washoe County	1,295	95.8%	(94.5-97.1)	52	4.2%	(2.9-5.5)	1,347
All Other Counties	1,358	91.3%	(88.0-94.6)	75	8.7%	(5.4-12.0)	1,433
Education							
Less than High School	370	89.9%	(85.0-94.8)	36	10.1%	(5.2-15.0)	406
High School	1,212	93.4%	(91.3-95.5)	73	6.6%	(4.5-8.7)	1,285
Some Post High School	1,337	95.7%	(94.0-97.4)	46	4.3%	(2.6-6.0)	1,383
College Graduate	1,014	97.5%	(95.7-99.2)	21	2.5%	(0.8-4.3)	1,035
Age Group							
18-24 years old	280	76.8%	(70.1-83.4)	62	23.2%	(16.6-29.9)	342
25-34 years old	639	96.8%	(94.9-98.8)	20	3.2%	(1.2-5.1)	659
35-44 years old	825	97.6%	(96.0-99.2)	15	2.4%	(0.8-4.0)	840
45-54 years old	803	98.8%	(97.6-100.0)	11	1.2%	(0.0-2.4)	814
55-64 years old	594	97.5%	(95.6-99.4)	13	2.5%	(0.6-4.4)	607
65+ years old	796	94.0%	(91.2-96.8)	56	6.0%	(3.2-8.8)	852
Income							
Less than \$15,000	367	87.4%	(81.7-93.2)	43	12.6%	(6.8-18.3)	410
\$15,000-\$24,999	636	93.4%	(90.2-96.7)	36	6.6%	(3.3-9.8)	672
\$25,000-\$34,999	530	95.0%	(92.2-97.8)	22	5.0%	(2.2-7.8)	552
\$35,000-\$49,999	688	96.9%	(95.0-98.8)	20	3.1%	(1.2-5.0)	708
\$50,000 or More	1,200	97.7%	(96.1-99.3)	15	2.3%	(0.7-3.9)	1,215

*Denominator is persons age 18-65+ and excludes missing, don't know, and refused responses.

Note: This table includes those respondents who answered "Yes" or "No" to the following question:

- 1) A Pap smear is a test for cancer of the cervix. Have you ever had a Pap smear?

Table 278. Cervical Cancer Cases by Gender, Race/Ethnicity and County/Region of Residence at Diagnosis, Nevada Residents (2000-2004) and SEER-17 (2000-2004)

Category	County/Region of Residence					
	Nevada Total	Clark	Washoe	All Other Counties	Unknown	SEER 17 (2000-2004)
Total						
Cases	514	383	85	46	0	16,674
Rate*	4.7	5.1	4.8	3.1	---	4.5
95% C.I.	(4.3-5.2)	(4.6-5.6)	(3.8-6.0)	(2.2-4.1)	---	(4.4-4.6)
Gender						
Male	---	---	---	---	---	---
Rate*	---	---	---	---	---	---
95% C.I.	---	---	---	---	---	---
Female	514	383	85	46	0	16,674
Rate*	9.4	10.1	9.4	6.1	---	8.7
95% C.I.	(8.6-10.3)	(9.1-11.2)	(7.5-11.7)	(4.5-8.2)	---	(8.5-8.8)
Other/Unknown	0	0	0	0	0	0
Race/Ethnicity						
White	371	266	64	41	0	12,762
Rate*	9.5	10.5	9.0	6.3	---	8.5
95% C.I.	(8.6-10.6)	(9.3-11.9)	(6.9-11.6)	(4.5-8.7)	---	(8.3-8.6)
Black	31	29	2	0	0	2,235
Rate*	9.4	9.5	---	---	---	11.4
95% C.I.	(6.3-14.0)	(6.3-14.3)	---	---	---	(10.9-11.9)
Native American	2	1	1	0	0	106
Rate*	---	---	---	---	---	5.0
95% C.I.	---	---	---	---	---	(4.1-6.2)
Asian	40	33	5	2	0	1,387
Rate*	11.5	11.9	---	---	---	8.0
95% C.I.	(7.7-18.3)	(7.4-20.6)	---	---	---	(7.6-8.4)
Hispanic	58	43	13	2	0	3,794
Rate*	9.1	8.0	20.3	---	---	13.8
95% C.I.	(6.7-12.4)	(5.6-11.6)	(10.0-38.7)	---	---	(13.3-14.3)
Other/Unknown	12	11	0	1	0	184

* Rates are per 100,000 age-specific female population.

Note: The "---" is used for rates calculated on numbers less than ten and SEER numbers less than five. See Technical Notes for more information.

Table 279. Cervical Cancer Inpatient Discharges by Gender, Charges, Length of Stay, and County/Region of Residence, Nevada Residents, 2000-2004

Category	County/Region of Residence				
	Nevada Total	Clark	Washoe	All Other Counties	Unknown
Total					
Discharges	609	418	110	81	0
Rate*	5.5	5.4	6.0	5.2	---
95% C.I.	(5.1-6.0)	(4.9-6.0)	(4.9-7.3)	(4.1-6.5)	---
Gender					
Male	---	---	---	---	---
Rate*	---	---	---	---	---
95% C.I.	---	---	---	---	---
Female	609	418	110	81	0
Rate*	11.1	11.0	12.0	10.4	---
95% C.I.	(10.2-12.0)	(10.0-12.1)	(9.9-14.5)	(8.2-13.0)	---
Other/Unknown	0	0	0	0	0
Inpatient Discharge Charges (\$)					
Total Charges	\$20,427,803	\$13,756,202	\$4,140,247	\$2,531,354	\$0
Average Charges	\$33,543	\$32,910	\$37,639	\$31,251	\$0
Median Charges	\$24,485	\$23,788	\$31,221	\$18,854	\$0
Discharge Length of Stay (LOS) (Days)					
Total LOS	2,981	2,063	494	424	0
Average LOS	4.9	4.9	4.5	5.2	0.0
Median LOS	3.0	4.0	3.0	3.0	0.0

* Rates are per 100,000 population and are age-adjusted to the 2000 US Standard population.

Note: The "---" is used for rates calculated on numbers less than ten. Caution should be used when comparing inpatient hospital discharge data to other data sources, since it is occurrence-based data. Please See Technical Notes for more information.

Table 280. Cervical Cancer Mortality by Age Group and County/Region of Residence, Nevada Residents, 2000-2004

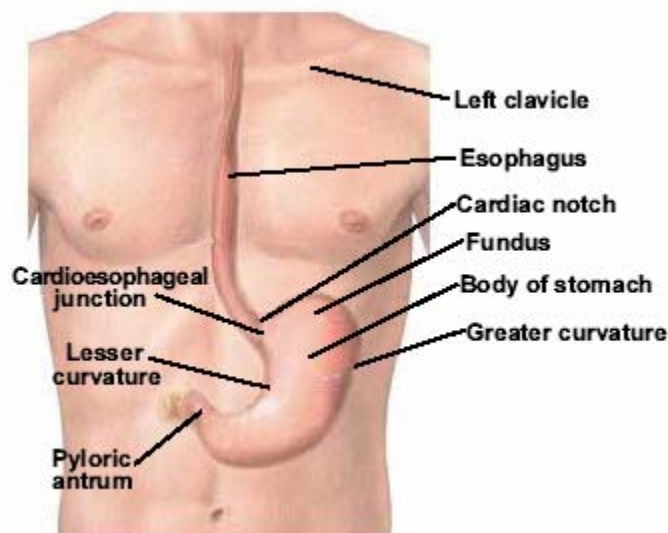
Category	County/Region of Residence			
	Nevada Total	Clark	Washoe	All Other Counties
Total				
Deaths	149	110	22	17
Rate*	2.8	3.0	2.5	2.1
95% C.I.	(2.3-3.3)	(2.5-3.6)	(1.5-3.8)	(1.2-3.4)
Age Group				
<1	0	0	0	0
Rate*	---	---	---	---
95% C.I.	---	---	---	---
1-4	0	0	0	0
Rate*	---	---	---	---
95% C.I.	---	---	---	---
5-14	0	0	0	0
Rate*	---	---	---	---
95% C.I.	---	---	---	---
15-24	0	0	0	0
Rate*	---	---	---	---
95% C.I.	---	---	---	---
25-34	9	8	1	0
Rate*	---	---	---	---
95% C.I.	---	---	---	---
35-44	24	18	3	3
Rate*	2.9	3.2	---	---
95% C.I.	(1.76-4.10)	(1.69-4.60)	---	---
45-54	35	28	3	4
Rate*	4.8	5.6	---	---
95% C.I.	(3.18-6.33)	(3.55-7.73)	---	---
55-64	29	17	8	4
Rate*	5.2	4.4	---	---
95% C.I.	(3.33-7.15)	(2.31-6.50)	---	---
65-74	24	18	2	4
Rate*	6.6	7.2	---	---
95% C.I.	(3.96-9.24)	(3.85-10.47)	---	---
75-84	20	14	4	2
Rate*	8.9	9.2	---	---
95% C.I.	(4.99-12.77)	(4.36-13.96)	---	---
85+	8	7	1	0
Rate*	---	---	---	---
95% C.I.	---	---	---	---
Unknown	0	0	0	0

* Rates are per 100,000 age-specific female population.
 Note: The "----" is used for rates calculated on numbers less than ten.

ESOPHAGEAL CANCER

GENERAL PROFILE⁴

Figure 174. Anatomical Drawing of the Esophagus and Stomach⁵



General Anatomy: The esophagus is a hollow tube that carries food and liquids from the throat to the stomach. When a person swallows, the muscular walls of the esophagus contract to push food down into the stomach. Glands in the lining of the esophagus produce mucus, which keeps the passageway moist and makes swallowing easier. The esophagus is located just behind the trachea (windpipe). In an adult, the esophagus is about 10 inches long.

Risk Factors: Age, (over 60 years of age), being male, tobacco use, chronic and/or heavy alcohol use, Barrett's Esophagus (Long-term irritation from gastric reflux), medical history, and other types of irritation that cause significant irritation or damage to the lining of the esophagus (swallowing lye or other caustic substances) can increase the risk of developing esophageal cancer.

Signs and Symptoms: Difficult or painful swallowing, severe weight loss, pain in the throat or back, behind the breastbone or between the shoulder blades, hoarseness or chronic cough, vomiting, and coughing up blood are some common symptoms of Esophageal Cancer.

Diagnosing the Cancer: Barium swallow x-rays (also called an Esophagram), biopsy procedures (Esophagoscopy/Endoscopy), computed tomography (CAT) scan, bone scan, and bronchoscopy are common ways of diagnosing this type of cancer.

Treatment: Surgery (Esophagectomy), radiation therapy, chemotherapy, laser therapy, and photodynamic therapy (PDT).

Table 281. Esophageal Cancer Cases by Gender, Race/Ethnicity and County/Region of Residence at Diagnosis, Nevada Residents (2000-2004) and SEER-17 (2000-2004)

Category	County/Region of Residence					SEER 17 (2000-2004)
	Nevada Total	Clark	Washoe	All Other Counties	Unknown	
Total						
Cases	545	370	81	94	0	16,227
Rate*	5.2	5.1	5.0	5.6	---	4.6
95% C.I.	(4.8-5.7)	(4.6-5.7)	(4.0-6.3)	(4.5-7.0)	---	(4.5-4.7)
Gender						
Male	425	291	60	74	0	12,213
Rate*	8.5	8.4	8.2	9.1	---	7.9
95% C.I.	(7.7-9.4)	(7.4-9.5)	(6.2-10.8)	(7.1-11.7)	---	(7.7-8.0)
Female	120	79	21	20	0	4,014
Rate*	2.2	2.2	2.5	2.4	---	2.0
95% C.I.	(1.9-2.7)	(1.7-2.7)	(1.5-3.8)	(1.5-3.8)	---	(2.0-2.1)
Other/Unknown	0	0	0	0	0	0
Race/Ethnicity						
White	475	309	75	91	0	13,524
Rate*	5.5	5.5	5.3	6.0	---	4.6
95% C.I.	(5.1-6.1)	(4.9-6.2)	(4.2-6.7)	(4.8-7.4)	---	(4.5-4.7)
Black	33	29	3	1	0	1,878
Rate*	6.5	6.2	---	---	---	6.2
95% C.I.	(4.4-9.7)	(4.0-9.6)	---	---	---	(5.9-6.5)
Native American	0	0	0	0	0	75
Rate*	---	---	---	---	---	2.7
95% C.I.	---	---	---	---	---	(2.1-2.1)
Asian	11	10	1	0	0	691
Rate*	2.0	2.3	---	---	---	2.5
95% C.I.	(1.0-3.8)	(1.1-4.5)	---	---	---	(2.3-2.7)
Hispanic	17	14	2	1	0	1,011
Rate*	2.5	2.8	---	---	---	3.0
95% C.I.	(1.3-4.7)	(1.4-5.7)	---	---	---	(2.8-3.2)
Other/Unknown	9	8	0	1	0	59

* Rates are per 100,000 age-specific population.

Note: The "----" is used for rates calculated on numbers less than ten and SEER numbers less than five. See Technical Notes for more information.

Table 282. Esophageal Cancer Inpatient Discharges by Gender, Charges, Length of Stay, and County/Region of Residence, Nevada Residents, 2000-2004

Category	County/Region of Residence				
	Nevada Total	Clark	Washoe	All Other Counties	Unknown
Total					
Discharges	302	216	43	43	0
Rate*	2.9	3.0	2.6	2.6	---
95% C.I.	(2.5-3.2)	(2.6-3.4)	(1.9-3.6)	(1.8-3.5)	---
Gender					
Male	227	162	33	32	0
Rate*	4.5	4.6	4.5	3.9	---
95% C.I.	(3.9-5.2)	(3.9-5.5)	(3.1-6.7)	(2.6-5.7)	---
Female	75	54	10	11	0
Rate*	1.4	1.5	1.2	1.3	---
95% C.I.	(1.1-1.7)	(1.1-1.9)	(0.6-2.1)	(0.6-2.3)	---
Other/Unknown	0	0	0	0	0
Inpatient Discharge Charges (\$)					
Total Charges	\$16,603,106	\$12,097,988	\$1,996,242	\$2,508,876	\$0
Average Charges	\$54,977	\$56,009	\$46,424	\$58,346	\$0
Median Charges	\$31,245	\$33,147	\$25,413	\$24,912	\$0
Discharge Length of Stay (LOS) (Days)					
Total LOS	2,781	2,052	324	405	0
Average LOS	9.2	9.5	7.5	9.4	0.0
Median LOS	7.0	7.0	6.0	7.0	0.0

* Rates are per 100,000 population and are age-adjusted to the 2000 US Standard population.

Note: The "---" is used for rates calculated on numbers less than ten. Caution should be used when comparing inpatient hospital discharge data to other data sources, since it is occurrence-based data. Please See Technical Notes for more information.

Table 283. Esophageal Cancer Mortality by Age Group and County/Region of Residence, Nevada Residents, 2000-2004

Category	County/Region of Residence			
	Nevada Total	Clark	Washoe	All Other Counties
Total				
Deaths	459	327	54	78
Rate*	4.4	4.6	3.4	4.7
95% C.I.	(4.0-4.9)	(4.1-5.1)	(2.5-4.4)	(3.7-6.0)
Age Group				
<1	0	0	0	0
Rate*	---	---	---	---
95% C.I.	---	---	---	---
1-4	0	0	0	0
Rate*	---	---	---	---
95% C.I.	---	---	---	---
5-14	0	0	0	0
Rate*	---	---	---	---
95% C.I.	---	---	---	---
15-24	0	0	0	0
Rate*	---	---	---	---
95% C.I.	---	---	---	---
25-34	0	0	0	0
Rate*	---	---	---	---
95% C.I.	---	---	---	---
35-44	12	10	1	1
Rate*	0.7	0.8	---	---
95% C.I.	(0.31-1.10)	(0.32-1.35)	---	---
45-54	45	33	5	7
Rate*	3.0	3.3	---	---
95% C.I.	(2.13-3.89)	(2.16-4.39)	---	---
55-64	130	99	12	19
Rate*	11.9	13.2	6.9	11.4
95% C.I.	(9.86-13.96)	(10.58-15.77)	(3.00-10.82)	(6.28-16.55)
65-74	135	88	22	25
Rate*	18.8	17.8	20.7	21.6
95% C.I.	(15.66-22.01)	(14.07-21.50)	(12.02-29.28)	(13.15-30.11)
75-84	113	82	9	22
Rate*	27.5	29.3	---	32.4
95% C.I.	(22.42-32.56)	(22.96-35.65)	---	(18.87-45.97)
85+	24	15	5	4
Rate*	25.3	24.6	---	---
95% C.I.	(15.15-35.37)	(12.17-37.11)	---	---
Unknown	0	0	0	0

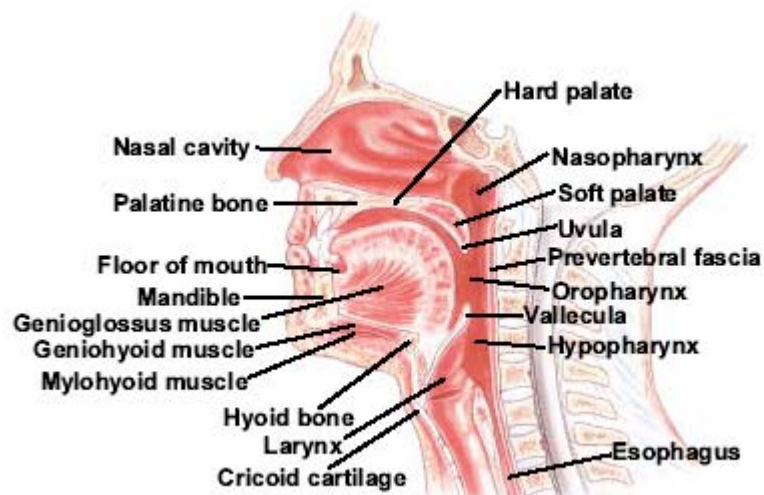
* Rates are per 100,000 age-specific population.

Note: The "----" is used for rates calculated on numbers less than ten.

LARYNX CANCER

GENERAL PROFILE⁴

Figure 175. Anatomy of the Oral Cavity⁵



General Anatomy: The larynx, also called the voice box, is a 2-inch-long, tube-shaped organ made of cartilage in the neck. We use the larynx when we breathe, talk, or swallow. The larynx is at the top of the windpipe (trachea). The large cartilage that forms the front of the larynx is sometimes called the Adam's apple. The vocal cords, two bands of muscle, form a "V" inside the larynx.

Risk Factors: Cancer of the larynx occurs most often in people over the age of 55, men, Blacks as a racial/ethnic group, smokers, and those who work with asbestos.

Signs and Symptoms: The symptoms of cancer of the larynx depend mainly on the size and location of the tumor. Most cancers of the larynx begin on the vocal cords. These tumors are seldom painful, but they almost always cause hoarseness or other changes in the voice. Tumors in the area above the vocal cords may cause a lump on the neck, a sore throat, or an earache. Tumors that begin in the area below the vocal cords are rare. They can make it hard to breathe, and breathing may be noisy.

A cough that doesn't go away or the feeling of a lump in the throat may also be warning signs of cancer of the larynx. As the tumor grows, it may cause pain, weight loss, bad breath, and frequent choking on food. In some cases, a tumor in the larynx can make it hard to swallow.

Diagnosing the Cancer: Direct and indirect laryngoscopy, computed tomography (CAT) scan, and magnetic resonance imaging (MRI) are some common ways of diagnosing cancer of the larynx.

Treatment: Radiation therapy, surgery (Partial or Total Laryngectomy), and chemotherapy are the most common treatment options for those diagnosed with Larynx Cancer.

Table 284. Larynx Cancer Cases by Gender, Race/Ethnicity and County/Region of Residence at Diagnosis, Nevada Residents (2000-2004) and SEER-17 (2000-2004)

Category	County/Region of Residence					SEER 17 (2000-2004)
	Nevada Total	Clark	Washoe	All Other Counties	Unknown	
Total						
Cases	391	273	66	52	0	13,226
Rate*	3.7	3.7	4.0	3.1	---	3.7
95% C.I.	(3.3-4.1)	(3.3-4.2)	(3.1-5.1)	(2.3-4.1)	---	(3.7-3.8)
Gender						
Male	305	213	47	45	0	10,581
Rate*	6.0	6.1	5.9	5.3	---	6.6
95% C.I.	(5.3-6.7)	(5.3-7.1)	(4.3-8.2)	(3.8-7.3)	---	(6.5-6.8)
Female	86	60	19	7	0	2,645
Rate*	1.6	1.6	2.2	---	---	1.4
95% C.I.	(1.3-2.0)	(1.2-2.1)	(1.3-3.5)	---	---	(1.3-1.4)
Other/Unknown	0	0	0	0	0	0
Race/Ethnicity						
White	355	240	64	51	0	10,801
Rate*	4.1	4.3	4.4	3.3	---	3.7
95% C.I.	(3.7-4.6)	(3.7-4.8)	(3.4-5.7)	(2.5-4.4)	---	(3.6-3.8)
Black	15	13	2	0	0	1,892
Rate*	2.8	2.5	---	---	---	6.0
95% C.I.	(1.6-4.9)	(1.3-4.4)	---	---	---	(5.8-6.3)
Native American	0	0	0	0	0	43
Rate*	---	---	---	---	---	1.3
95% C.I.	---	---	---	---	---	(0.9-0.9)
Asian	4	4	0	0	0	409
Rate*	---	---	---	---	---	1.5
95% C.I.	---	---	---	---	---	(1.3-1.6)
Hispanic	11	11	0	0	0	952
Rate*	1.4	1.8	---	---	---	2.7
95% C.I.	(0.7-2.8)	(0.9-3.6)	---	---	---	(2.5-2.8)
Other/Unknown	6	5	0	1	0	81

* Rates are per 100,000 age-specific population.

Note: The "---" is used for rates calculated on numbers less than ten and SEER numbers less than five. See Technical Notes for more information.

Table 285. Larynx Cancer Inpatient Discharges by Gender, Charges, Length of Stay, and County/Region of Residence, Nevada Residents, 2000-2004

Category	County/Region of Residence				
	Nevada Total	Clark	Washoe	All Other Counties	Unknown
Total					
Discharges	166	120	23	23	0
Rate*	1.6	1.7	1.4	1.3	---
95% C.I.	(1.3-1.8)	(1.4-2.0)	(0.9-2.2)	(0.8-2.0)	---
Gender					
Male	125	96	11	18	0
Rate*	2.5	2.9	1.3	1.9	---
95% C.I.	(2.0-3.0)	(2.3-3.7)	(0.6-2.4)	(1.2-3.1)	---
Female	41	24	12	5	0
Rate*	0.8	0.7	1.4	---	---
95% C.I.	(0.6-1.1)	(0.4-1.0)	(0.7-2.5)	---	---
Other/Unknown	0	0	0	0	0
Inpatient Discharge Charges (\$)					
Total Charges	\$10,039,307	\$7,276,794	\$1,226,554	\$1,535,959	\$0
Average Charges	\$60,478	\$60,640	\$53,328	\$66,781	\$0
Median Charges	\$42,372	\$43,241	\$44,226	\$36,996	\$0
Discharge Length of Stay (LOS) (Days)					
Total LOS	1,716	1,238	199	279	0
Average LOS	10.3	10.3	8.7	12.1	0.0
Median LOS	8.0	8.0	8.0	9.0	0.0

* Rates are per 100,000 population and are age-adjusted to the 2000 US Standard population.

Note: The "---" is used for rates calculated on numbers less than ten. Caution should be used when comparing inpatient hospital discharge data to other data sources, since it is occurrence-based data. Please See Technical Notes for more information.

Table 286. Larynx Cancer Mortality by Age Group and County/Region of Residence, Nevada Residents, 2000-2004

Category	County/Region of Residence			
	Nevada Total	Clark	Washoe	All Other Counties
Total				
Deaths	108	73	19	16
Rate*	1.1	1.1	1.1	1.0
95% C.I.	(0.9-1.3)	(0.8-1.3)	(0.7-1.8)	(0.5-1.6)
Age Group				
<1	0	0	0	0
Rate*	---	---	---	---
95% C.I.	---	---	---	---
1-4	0	0	0	0
Rate*	---	---	---	---
95% C.I.	---	---	---	---
5-14	0	0	0	0
Rate*	---	---	---	---
95% C.I.	---	---	---	---
15-24	0	0	0	0
Rate*	---	---	---	---
95% C.I.	---	---	---	---
25-34	0	0	0	0
Rate*	---	---	---	---
95% C.I.	---	---	---	---
35-44	1	1	0	0
Rate*	---	---	---	---
95% C.I.	---	---	---	---
45-54	8	5	1	2
Rate*	---	---	---	---
95% C.I.	---	---	---	---
55-64	38	25	10	3
Rate*	3.5	3.3	5.8	---
95% C.I.	(2.37-4.59)	(2.02-4.63)	(2.19-9.33)	---
65-74	28	19	2	7
Rate*	3.9	3.8	---	---
95% C.I.	(2.46-5.35)	(2.11-5.57)	---	---
75-84	24	17	4	3
Rate*	5.8	6.1	---	---
95% C.I.	(3.50-8.18)	(3.19-8.96)	---	---
85+	9	6	2	1
Rate*	---	---	---	---
95% C.I.	---	---	---	---
Unknown	0	0	0	0

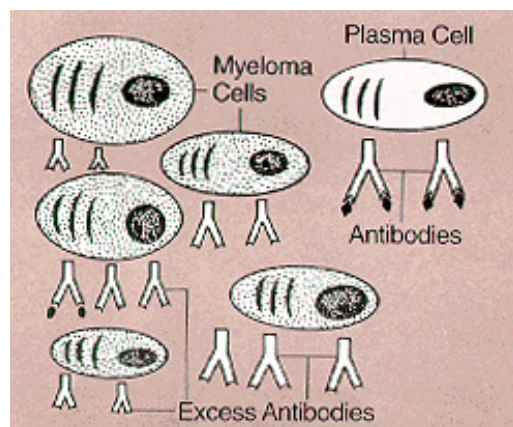
* Rates are per 100,000 age-specific population.

Note: The "----" is used for rates calculated on numbers less than ten.

MULTIPLE MYELOMA

GENERAL PROFILE⁴

Figure 176. Picture of Myeloma Cells⁴



General Anatomy: Multiple Myeloma affects certain white blood cells called plasma cells that are part of the body's immune system. Plasma cells begin their development in the bone marrow and help the immune system fight infection and disease by producing antibodies. When cancer involves plasma cells, the body keeps producing more and more of these cells. The unneeded plasma cells -- all abnormal and all exactly alike -- are called myeloma cells. Myeloma cells tend to collect in the bone marrow and in the hard, outer part of bones. Sometimes they collect in only one bone and form a single mass, or tumor, called a plasmacytoma. In most cases, however, the myeloma cells collect in many bones, often forming many tumors and causing other problems. When this happens, the disease is called multiple myeloma.

Risk Factors: While the cause is unknown most multiple myeloma patients are between 50 and 70 years of age and affects Blacks, as a racial/ethnic group, more often than whites and men more often than women. Those with a family history of multiple myeloma and those exposed to certain chemicals and radiation seem to have a slightly higher increase in the risk of developing this type of cancer. In most cases, people who develop multiple myeloma have no clear risk factors. The disease may be the result of several factors (known and/or unknown) acting together.

Signs and Symptoms: Symptoms of multiple myeloma depend on how advanced the disease is. In the earliest stage of the disease, there may be no symptoms. When symptoms do occur, patients commonly have: bone pain in the back or ribs, broken bones, weakness, fatigue, weight loss, or repeated infections. When the disease is advanced, symptoms may include nausea, vomiting, constipation, problems with urination, and weakness or numbness in the legs.

Diagnosing the Cancer: X-rays, blood and urine tests (high levels of antibody proteins), bone marrow aspiration and/or bone marrow biopsy.

Treatment: chemotherapy, radiation therapy, and secondary surgical procedures to help the individual recover from these types of therapy include: bone marrow transplantation, peripheral stem cell support, and treatment with colony-stimulating factors.

Table 287. Multiple Myeloma Cases by Gender, Race/Ethnicity and County/Region of Residence at Diagnosis, Nevada Residents (2000-2004) and SEER-17 (2000-2004)

Category	County/Region of Residence					
	Nevada Total	Clark	Washoe	All Other Counties	Unknown	SEER 17 (2000-2004)
Total						
Cases	453	298	89	66	0	19,650
Rate*	4.4	4.3	5.5	4.1	---	5.6
95% C.I.	(4.0-4.9)	(3.8-4.8)	(4.4-6.8)	(3.1-5.2)	---	(5.5-5.7)
Gender						
Male	264	168	49	47	0	10,621
Rate*	5.5	5.1	6.5	6.1	---	7.0
95% C.I.	(4.8-6.3)	(4.3-6.1)	(4.7-8.9)	(4.4-8.3)	---	(6.8-7.1)
Female	189	130	40	19	0	9,029
Rate*	3.5	3.6	4.7	2.2	---	4.5
95% C.I.	(3.0-4.1)	(3.0-4.2)	(3.4-6.4)	(1.3-3.5)	---	(4.5-4.6)
Other/Unknown	0	0	0	0	0	0
Race/Ethnicity						
White	360	224	76	60	0	15,118
Rate*	4.3	4.1	5.3	4.1	---	5.2
95% C.I.	(3.9-4.8)	(3.6-4.7)	(4.2-6.7)	(3.1-5.3)	---	(5.1-5.3)
Black	40	37	2	1	0	3,284
Rate*	7.7	7.6	---	---	---	11.3
95% C.I.	(5.4-10.9)	(5.3-11.0)	---	---	---	(10.9-11.7)
Native American	4	1	0	3	0	106
Rate*	---	---	---	---	---	3.9
95% C.I.	---	---	---	---	---	(3.1-3.1)
Asian	15	8	7	0	0	914
Rate*	3.8	---	---	---	---	3.3
95% C.I.	(1.9-7.8)	---	---	---	---	(3.1-3.5)
Hispanic	21	16	3	2	0	1,953
Rate*	2.7	2.7	---	---	---	5.7
95% C.I.	(1.6-4.4)	(1.4-4.7)	---	---	---	(5.4-5.9)
Other/Unknown	13	12	1	0	0	228

* Rates are per 100,000 age-specific population.

Note: The "---" is used for rates calculated on numbers less than ten and SEER numbers less than five. See Technical Notes for more information.

Table 288. Multiple Myeloma Inpatient Discharges by Gender, Charges, Length of Stay, and County/Region of Residence, Nevada Residents, 2000-2004

Category	County/Region of Residence				
	Nevada Total	Clark	Washoe	All Other Counties	Unknown
Total					
Discharges	373	255	74	44	0
Rate*	3.6	3.6	4.4	2.6	---
95% C.I.	(3.2-4.0)	(3.2-4.1)	(3.5-5.6)	(1.9-3.6)	---
Gender					
Male	213	150	41	22	0
Rate*	4.3	4.6	5.1	2.6	---
95% C.I.	(3.7-5.0)	(3.8-5.5)	(3.6-7.3)	(1.6-4.0)	---
Female	160	105	33	22	0
Rate*	2.9	2.8	3.9	2.6	---
95% C.I.	(2.5-3.4)	(2.3-3.4)	(2.6-5.4)	(1.6-4.0)	---
Other/Unknown	0	0	0	0	0
Inpatient Discharge Charges (\$)					
Total Charges	\$20,511,188	\$15,682,775	\$3,334,873	\$1,493,540	\$0
Average Charges	\$54,990	\$61,501	\$45,066	\$33,944	\$0
Median Charges	\$33,120	\$35,636	\$27,761	\$27,031	\$0
Discharge Length of Stay (LOS) (Days)					
Total LOS	3,637	2,541	785	311	0
Average LOS	9.8	10.0	10.6	7.1	0.0
Median LOS	7.0	7.0	8.0	7.0	0.0

* Rates are per 100,000 population and are age-adjusted to the 2000 US Standard population.

Note: The "---" is used for rates calculated on numbers less than ten. Caution should be used when comparing inpatient hospital discharge data to other data sources, since it is occurrence-based data. Please See Technical Notes for more information.

Table 289. Multiple Myeloma Mortality by Age Group and County/Region of Residence, Nevada Residents, 2000-2004

Category	County/Region of Residence			
	Nevada Total	Clark	Washoe	All Other Counties
Total				
Deaths	341	228	70	43
Rate*	3.4	3.4	4.4	2.7
95% C.I.	(3.1-3.8)	(3.0-3.9)	(3.5-5.7)	(1.9-3.6)
Age Group				
<1	0	0	0	0
Rate*	---	---	---	---
95% C.I.	---	---	---	---
1-4	0	0	0	0
Rate*	---	---	---	---
95% C.I.	---	---	---	---
5-14	0	0	0	0
Rate*	---	---	---	---
95% C.I.	---	---	---	---
15-24	0	0	0	0
Rate*	---	---	---	---
95% C.I.	---	---	---	---
25-34	0	0	0	0
Rate*	---	---	---	---
95% C.I.	---	---	---	---
35-44	4	4	0	0
Rate*	---	---	---	---
95% C.I.	---	---	---	---
45-54	28	21	4	3
Rate*	1.9	2.1	---	---
95% C.I.	(1.18-2.57)	(1.19-2.98)	---	---
55-64	77	50	13	14
Rate*	7.1	6.7	7.5	8.4
95% C.I.	(5.48-8.63)	(4.81-8.50)	(3.42-11.55)	(4.01-12.82)
65-74	102	62	27	13
Rate*	14.2	12.5	25.3	11.3
95% C.I.	(11.47-16.99)	(9.41-15.65)	(15.78-34.90)	(5.13-17.36)
75-84	101	71	22	8
Rate*	24.6	25.4	34.7	---
95% C.I.	(19.78-29.37)	(19.47-31.28)	(20.22-49.26)	---
85+	29	20	4	5
Rate*	30.5	32.9	---	---
95% C.I.	(19.41-41.63)	(18.45-47.25)	---	---
Unknown	0	0	0	0

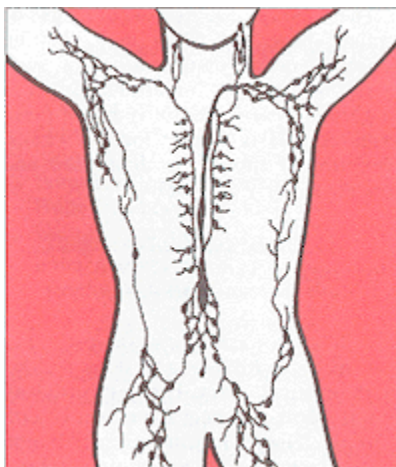
* Rates are per 100,000 age-specific population.

Note: The "----" is used for rates calculated on numbers less than ten.

HODGKIN'S LYMPHOMA

GENERAL PROFILE⁴

Figure 177. Anatomy of the Lymphatic System⁴



General Anatomy: Lymphoma is a general term for cancers that develop in the lymphatic system. The lymphatic system is part of the body's immune system that helps the body fight disease and infection and includes a network of thin tubes (lymphatic vessels) that branch, like blood vessels, into tissues throughout the body. These vessels carry lymph, a colorless, watery fluid that contains infection-fighting cells called lymphocytes. Along this network of vessels are small organs called lymph nodes that are found in the underarms, groin, neck, chest, and abdomen. Other parts of the lymphatic system are the spleen, thymus, tonsils, and bone marrow. Lymphatic tissue is also found in other parts of the body, including the stomach, intestines, and skin.

Hodgkin's disease, an uncommon lymphoma, accounts for less than 1 percent of all cases of cancer in the United States. This type of cancer tends to spread in a fairly orderly way from one group of lymph nodes to the next group. For example, Hodgkin's disease that arises in the lymph nodes in the neck spreads first to the nodes above the collarbones, and then to the lymph nodes under the arms and within the chest. Eventually, it can spread to almost any other part of the body.

Risk Factors: Common risk factors that are believed to be associated with the development of Hodgkin's Lymphoma are: age (between 15 and 34 and over 55 years of age), being male, family history, and certain viruses (Epstein-Barr virus).

Signs and Symptoms: A painless swelling in the lymph nodes in the neck, underarm, or groin, unexplained recurrent fevers, night sweats, unexplained weight loss, and itchy skin are some common symptoms that can be associated with Hodgkin's Lymphoma.

Diagnosing the Cancer: X-rays, computed tomography (CAT) scan, and magnetic resonance imaging (MRI), and biopsy (Reed-Sternberg cells in lymph node tissue).

Treatment: Radiation therapy and chemotherapy are the most common treatments, but others include: bone marrow transplantation, peripheral stem cell transplantation, and biological therapies are being studied in clinical trials.

Table 290. Hodgkin's Lymphoma Cases by Gender, Race/Ethnicity and County/Region of Residence at Diagnosis, Nevada Residents (2000-2004) and SEER-17 (2000-2004)

Category	County/Region of Residence					SEER 17 (2000-2004)
	Nevada Total	Clark	Washoe	All Other Counties	Unknown	
Total						
Cases	279	206	49	24	0	10,117
Rate*	2.5	2.6	2.7	1.6	---	2.7
95% C.I.	(2.2-2.8)	(2.3-3.0)	(2.0-3.6)	(1.0-2.5)	---	(2.6-2.8)
Gender						
Male	151	111	30	10	0	5,517
Rate*	2.7	2.8	3.4	1.2	---	3.0
95% C.I.	(2.3-3.1)	(2.3-3.4)	(2.3-4.9)	(0.6-2.4)	---	(3.0-3.1)
Female	128	95	19	14	0	4,600
Rate*	2.3	2.5	2.1	2.0	---	2.4
95% C.I.	(2.0-2.8)	(2.0-3.0)	(1.3-3.4)	(1.1-3.4)	---	(2.3-2.5)
Other/Unknown	0	0	0	0	0	0
Race/Ethnicity						
White	221	156	44	21	0	8,555
Rate*	3.0	3.2	3.3	1.8	---	2.9
95% C.I.	(2.6-3.4)	(2.7-3.7)	(2.4-4.4)	(1.1-2.8)	---	(2.8-3.0)
Black	22	22	0	0	0	1,000
Rate*	3.1	3.4	---	---	---	2.4
95% C.I.	(1.9-5.0)	(2.1-5.3)	---	---	---	(2.3-2.6)
Native American	1	0	1	0	0	34
Rate*	---	---	---	---	---	0.8
95% C.I.	---	---	---	---	---	(0.5-0.5)
Asian	11	10	1	0	0	417
Rate*	1.6	1.8	---	---	---	1.2
95% C.I.	(0.8-2.9)	(0.8-3.4)	---	---	---	(1.1-1.3)
Hispanic	17	13	1	3	0	1,379
Rate*	0.9	0.9	---	---	---	2.2
95% C.I.	(0.4-1.6)	(0.4-1.8)	---	---	---	(2.1-2.4)
Other/Unknown	7	5	2	0	0	111

* Rates are per 100,000 age-specific population.

Note: The "----" is used for rates calculated on numbers less than ten and SEER numbers less than five. See Technical Notes for more information.

Table 291. Hodgkin's Lymphoma Inpatient Discharges by Gender, Charges, Length of Stay, and County/Region of Residence, Nevada Residents, 2000-2004

Category	County/Region of Residence				
	Nevada Total	Clark	Washoe	All Other Counties	Unknown
Total					
Discharges	118	91	19	8	0
Rate*	1.1	1.1	1.1	---	---
95% C.I.	(0.9-1.3)	(0.9-1.4)	(0.6-1.7)	---	---
Gender					
Male	63	50	11	2	0
Rate*	1.1	1.2	1.2	---	---
95% C.I.	(0.8-1.4)	(0.9-1.6)	(0.6-2.2)	---	---
Female	54	40	8	6	0
Rate*	1.0	1.0	---	---	---
95% C.I.	(0.7-1.3)	(0.7-1.4)	---	---	---
Other/Unknown	1	1	0	0	0
Inpatient Discharge Charges (\$)					
Total Charges	\$5,352,582	\$4,228,715	\$792,825	\$331,042	\$0
Average Charges	\$45,361	\$46,469	\$41,728	\$41,380	\$0
Median Charges	\$31,299	\$31,043	\$34,998	\$27,653	\$0
Discharge Length of Stay (LOS) (Days)					
Total LOS	873	693	131	49	0
Average LOS	7.4	7.6	6.9	6.1	0.0
Median LOS	5.0	5.0	5.0	5.5	0.0

* Rates are per 100,000 population and are age-adjusted to the 2000 US Standard population.

Note: The "---" is used for rates calculated on numbers less than ten. Caution should be used when comparing inpatient hospital discharge data to other data sources, since it is occurrence-based data. Please See Technical Notes for more information.

Table 292. Hodgkin's Lymphoma Mortality by Age Group and County/Region of Residence, Nevada Residents, 2000-2004

Category	County/Region of Residence			
	Nevada Total	Clark	Washoe	All Other Counties
Total				
Deaths	37	25	7	5
Rate*	0.4	0.3	0.0	0.0
95% C.I.	(0.2-0.5)	(0.2-0.5)	---	---
Age Group				
<1	0	0	0	0
Rate*	---	---	---	---
95% C.I.	---	---	---	---
1-4	0	0	0	0
Rate*	---	---	---	---
95% C.I.	---	---	---	---
5-14	0	0	0	0
Rate*	---	---	---	---
95% C.I.	---	---	---	---
15-24	1	0	0	1
Rate*	---	---	---	---
95% C.I.	---	---	---	---
25-34	2	2	0	0
Rate*	---	---	---	---
95% C.I.	---	---	---	---
35-44	4	3	0	1
Rate*	---	---	---	---
95% C.I.	---	---	---	---
45-54	7	3	3	1
Rate*	---	---	---	---
95% C.I.	---	---	---	---
55-64	4	3	0	1
Rate*	---	---	---	---
95% C.I.	---	---	---	---
65-74	13	10	3	0
Rate*	1.8	2.0	---	---
95% C.I.	(0.83-2.80)	(0.77-3.27)	---	---
75-84	4	3	1	0
Rate*	---	---	---	---
95% C.I.	---	---	---	---
85+	2	1	0	1
Rate*	---	---	---	---
95% C.I.	---	---	---	---
Unknown	0	0	0	0

* Rates are per 100,000 age-specific population.

Note: The "----" is used for rates calculated on numbers less than ten.

ALL OTHER SITES

Table 293. Cancer Cases for All Other Sites by Gender, County/Region of Residence at Diagnosis and Race/Ethnicity, Nevada Residents (2000-2004) and SEER-17 (2000-2004)

Category	County/Region of Residence					
	Nevada Total	Clark	Washoe	All Other Counties	Unknown	SEER 17 (2000-2004)
Total						
Cases	3,464	2,408	567	488	1	117,455
Rate*	33.9	34.2	34.8	31.2	---	32.8
95% C.I.	(32.7-35.1)	(32.8-35.6)	(31.9-37.9)	(28.4-34.1)	---	(32.6-32.9)
Gender						
Male	1,995	1,363	337	294	1	63,222
Rate*	40.2	40.0	42.4	38.5	---	39.4
95% C.I.	(38.4-42.1)	(37.8-42.4)	(37.8-47.6)	(34.1-43.4)	---	(39.1-39.7)
Female	1,468	1,044	230	194	0	54,233
Rate*	27.8	28.7	27.2	24.0	---	27.1
95% C.I.	(26.3-29.3)	(26.9-30.5)	(23.8-31.0)	(20.7-27.7)	---	(26.9-27.4)
Other/Unknown	1	1	0	0	0	0
Race/Ethnicity						
White	2,838	1,883	505	449	1	98,916
Rate*	35.6	35.9	37.4	32.2	---	33.6
95% C.I.	(34.3-37.0)	(34.3-37.6)	(34.2-41.0)	(29.2-35.4)	---	(33.4-33.8)
Black	182	167	10	5	0	10,370
Rate*	31.2	30.7	32.9	---	---	32.7
95% C.I.	(26.6-36.6)	(26.0-36.4)	(15.3-66.3)	---	---	(32.0-33.3)
Native American	13	2	1	10	0	623
Rate*	9.5	---	---	20.3	---	19.4
95% C.I.	(5.0-16.7)	---	---	(9.6-38.1)	---	(17.8-17.8)
Asian	102	83	19	0	0	6,203
Rate*	21.6	22.1	26.9	---	---	21.7
95% C.I.	(16.8-28.2)	(16.5-30.1)	(13.9-54.0)	---	---	(21.2-22.3)
Hispanic	230	188	27	15	0	13,154
Rate*	21.4	22.4	19.9	14.5	---	31.1
95% C.I.	(18.0-25.6)	(18.4-27.6)	(12.2-31.8)	(7.0-28.2)	---	(30.5-31.7)
Other/Unknown	99	85	5	9	0	1,343

* Rates are per 100,000 age-specific population.

Note: The "----" is used for rates calculated on numbers less than ten and SEER numbers less than five. See Technical Notes for more information.

Table 294. Inpatient Discharges for All Other Sites by Gender, Charges, Length of Stay, and County/Region of Residence, Nevada Residents, 2000-2004

Category	County/Region of Residence				
	Nevada Total	Clark	Washoe	All Other Counties	Unknown
Total					
Discharges	8,238	5,881	1,351	1,003	3
Rate*	77.9	80.7	80.9	61.9	---
95% C.I.	(76.2-79.7)	(78.6-82.9)	(76.6-85.4)	(58.0-66.4)	---
Gender					
Male	3,729	2,620	599	507	3
Rate*	75.1	76.3	78.0	66.0	---
95% C.I.	(72.6-77.7)	(73.2-79.5)	(71.6-85.0)	(60.1-73.2)	---
Female	4,508	3,260	752	496	0
Rate*	82.2	86.3	85.9	59.2	---
95% C.I.	(79.8-84.7)	(83.3-89.4)	(79.8-92.3)	(54.0-64.7)	---
Other/Unknown	1	1	0	0	0
Inpatient Discharge Charges (\$)					
Total Charges	\$339,550,160	\$254,132,975	\$52,420,532	\$32,877,477	\$119,176
Average Charges	\$41,218	\$43,213	\$38,801	\$32,779	\$39,725
Median Charges	\$26,975	\$28,368	\$26,135	\$22,672	\$26,925
Discharge Length of Stay (LOS) (Days)					
Total LOS	61,414	44,391	10,458	6,525	40
Average LOS	7.5	7.5	7.7	6.5	13.3
Median LOS	5.0	5.0	6.0	5.0	10.0

* Rates are per 100,000 population and are age-adjusted to the 2000 US Standard population.

Note: The "---" is used for rates calculated on numbers less than ten. Caution should be used when comparing inpatient hospital discharge data to other data sources, since it is occurrence-based data. Please See Technical Notes for more information.

Table 295. All Other Sites Cancer Mortality by Age Group and County/Region of Residence, Nevada Residents, 2000-2004

Category	County/Region of Residence			
	Nevada Total	Clark	Washoe	All Other Counties
Total				
Deaths	2,180	1,434	359	387
Rate*	22.4	21.5	23.3	25.1
95% C.I.	(21.4-23.4)	(20.3-22.7)	(20.9-26.0)	(22.7-27.8)
Age Group				
<1	1	1	0	0
Rate*	---	---	---	---
95% C.I.	---	---	---	---
1-4	1	0	0	1
Rate*	---	---	---	---
95% C.I.	---	---	---	---
5-14	5	5	0	0
Rate*	---	---	---	---
95% C.I.	---	---	---	---
15-24	17	12	3	2
Rate*	1.1	1.1	---	---
95% C.I.	(0.57-1.61)	(0.48-1.71)	---	---
25-34	36	30	3	3
Rate*	2.2	2.5	---	---
95% C.I.	(1.50-2.95)	(1.61-3.40)	---	---
35-44	53	34	8	11
Rate*	3.1	2.8	---	5.0
95% C.I.	(2.27-3.95)	(1.88-3.78)	---	(2.06-8.01)
45-54	187	132	28	27
Rate*	12.5	13.1	10.7	12.1
95% C.I.	(10.73-14.32)	(10.86-15.33)	(6.72-14.64)	(7.53-16.64)
55-64	420	295	61	64
Rate*	38.5	39.3	35.1	38.5
95% C.I.	(34.79-42.15)	(34.77-43.73)	(26.31-43.93)	(29.03-47.88)
65-74	588	381	101	106
Rate*	82.0	77.0	94.8	91.7
95% C.I.	(75.40-88.66)	(69.28-84.75)	(76.31-113.29)	(74.26-109.18)
75-84	622	391	109	122
Rate*	151.3	139.7	172.1	179.8
95% C.I.	(139.45-163.23)	(125.89-153.59)	(139.82-204.45)	(147.88-211.68)
85+	250	153	46	51
Rate*	263.1	251.3	263.5	305.8
95% C.I.	(230.51-295.74)	(211.50-291.14)	(187.35-339.64)	(221.88-389.75)
Unknown	0	0	0	0

* Rates are per 100,000 age-specific population.

Note: The "----" is used for rates calculated on numbers less than ten.