

# **ALL OTHER CANCERS**

## ALL OTHER CANCERS

**Table 255. Cancer Incidence, Inpatient Hospital Discharges and Mortality by Type of Cancer, Nevada Residents, 1999-2003**

Type of Cancer	Incidence	Hospital Admissions	Mortality
<b>Total</b>	<b>44,824</b>	<b>33,951</b>	<b>17,459</b>
Rate*	470.2	351.8	204.8
95% C.I.	(465.8-474.7)	(348.0-355.6)	(201.7-207.9)
Skin	1,333	88	264
Rate*	13.5	0.9	2.9
95% C.I.	(12.8-14.3)	(0.7-1.2)	(2.6-3.3)
Corpus Uteri & Uterus NOS	915	853	134
Rate*	18.2	16.8	3.0
95% C.I.	(17.0-19.4)	(15.7-18.0)	(2.5-3.6)
Ovary	755	721	376
Rate*	15.0	14.3	8.2
95% C.I.	(14.0-16.2)	(13.3-15.4)	(7.4-9.0)
Thyroid Gland	843	1,167	29
Rate*	8.2	11.3	0.3
95% C.I.	(7.7-8.8)	(10.7-12.0)	(0.2-0.5)
Brain and Other Central Nervous System	626	824	338
Rate*	6.4	8.3	3.7
95% C.I.	(5.9-6.9)	(7.7-8.9)	(3.3-4.2)
Stomach	584	584	325
Rate*	6.5	6.2	3.9
95% C.I.	(5.9-7.0)	(5.7-6.7)	(3.5-4.4)
Liver and Intrahepatic Bile Ducts	534	358	415
Rate*	5.6	3.7	4.8
95% C.I.	(5.1-6.1)	(3.3-4.1)	(4.3-5.3)
Cervix Uteri	507	632	140
Rate*	10.1	12.5	3.0
95% C.I.	(9.2-11.0)	(11.5-13.5)	(2.5-3.5)
Esophagus	512	311	384
Rate*	5.3	3.2	4.2
95% C.I.	(4.9-5.8)	(2.8-3.6)	(3.8-4.7)
Larynx	375	195	124
Rate*	3.9	2.0	1.4
95% C.I.	(3.5-4.3)	(1.7-2.3)	(1.2-1.7)
Multiple Myeloma	426	337	261
Rate*	4.6	3.5	3.0
95% C.I.	(4.1-5.0)	(3.1-3.9)	(2.7-3.4)
Hodgkin's Lymphoma	248	110	38
Rate*	2.4	1.1	0.4
95% C.I.	(2.1-2.8)	(0.9-1.3)	(0.3-0.6)
All Other Sites	3,172	7,954	2,029
Rate*	33.8	82.5	24.1
95% C.I.	(32.6-35.1)	(80.7-84.4)	(23.1-25.3)

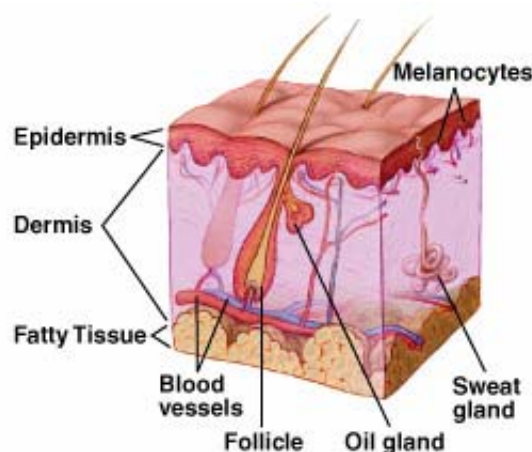
\* Rates are per 100,000 population and age-adjusted to the 2000 US Standard population. Gender-specific cancers are per 100,000 gender-specific population and age-adjusted to the 2000 US Standard population.

Note: The "---" is used for rates calculated on numbers less than ten.

## SKIN CANCER

### GENERAL PROFILE<sup>4</sup>

**Figure 166. Anatomy of the Skin<sup>4</sup>**



**General Anatomy:** The skin is the body's largest organ. It protects against heat, sunlight, injury, and infection. It helps regulate body temperature, stores water and fat, and produces vitamin D. The skin has two main layers: the outer epidermis and the inner dermis. The epidermis is mostly made up of flat, scalelike cells called squamous cells. Round cells called basal cells lie under the squamous cells in the epidermis. The lower part of the epidermis also contains melanocytes. The dermis contains blood vessels, lymph vessels, hair follicles, and glands. Some of these glands produce sweat, which helps regulate body temperature. Other glands produce sebum, an oily substance that helps keep the skin from drying out. Sweat and sebum reach the skin's surface through tiny openings called pores. Melanoma is one of the most common cancers and occurs when melanocytes (pigment cells) become malignant.

**Risk Factors:** Dysplastic nevi moles, many (more than 50) ordinary moles, fair skin, personal history of melanoma or skin cancer, family history of melanoma, weakened immune system, severe blistering sunburns, and ultraviolet (UV) radiation.

**Signs and Symptoms:** Asymmetrical, border, color, and diameter changes in a mole, and Dysplastic Nevi moles are common signs and symptoms.

**Diagnosing the Cancer:** Excisional biopsy.

**Treatment:** Treatment options include: surgery (Sentinel lymph node biopsy, Lymph node dissection), chemotherapy (Orally or injection or Isolated limb perfusion), biological therapy, or radiation therapy.

**Table 256. Skin Cancer Cases by Age Group and County/Region of Residence at Diagnosis, Nevada Residents (1999-2003) and SEER-13 (1998-2002)**

Category	County/Region of Residence					
	Nevada Total	Clark	Washoe	All Other Counties	Unknown	SEER 13 (1998-2002)
Total						
Cases	1,787	1,314	262	211	0	31,586
Rate*	17.7	17.7	17.7	17.7	---	17.3
95% C.I.	(16.8-18.5)	(16.8-18.5)	(16.8-18.5)	(16.8-18.5)	---	(17.1-17.5)
Gender						
Male	1,064	1,064	1,064	1,064	0	17,072
Rate*	22.1	22.1	22.1	22.1	---	21.5
95% C.I.	(20.7-23.6)	(20.7-23.6)	(20.7-23.6)	(20.7-23.6)	---	(21.1-21.8)
Female	722	722	722	722	0	13,406
Rate*	13.9	13.9	13.9	13.9	---	13.9
95% C.I.	(12.9-15.0)	(12.9-15.0)	(12.9-15.0)	(12.9-15.0)	---	(13.6-14.1)
Other/Unknown	1	1	0	0	0	0
Race/Ethnicity						
White	1,712	1,248	257	207	0	28,929
Rate*	22.1	22.1	22.1	22.1	---	20.3
95% C.I.	(21.1-23.2)	(21.1-23.2)	(21.1-23.2)	(21.1-23.2)	---	(20.1-20.6)
Black	14	13	0	1	0	157
Rate*	3.0	3.0	---	---	---	1.0
95% C.I.	(1.5-5.6)	(1.5-5.6)	---	---	---	(0.9-1.2)
Native American	3	1	1	1	0	35
Rate*	---	---	---	---	---	1.9
95% C.I.	---	---	---	---	---	(1.3-1.3)
Asian	7	7	0	0	0	294
Rate*	---	---	---	---	---	1.6
95% C.I.	---	---	---	---	---	(1.4-1.8)
Hispanic	32	29	2	1	0	899
Rate*	3.1	3.1	---	---	---	4.3
95% C.I.	(1.8-5.4)	(1.8-5.4)	---	---	---	(4.0-4.6)
Other/Unknown	19	16	2	1	0	1,068

\* Rates are per 100,000 age-specific population.

Note: The "---" is used for rates calculated on numbers less than ten and SEER numbers less than five. See Technical Notes for more information.

**Table 257. Skin Cancer Inpatient Discharges by Gender, Charges, Length of Stay, and County/Region of Residence, Nevada Residents, 1999-2003**

Category	County/Region of Residence				
	Nevada Total	Clark	Washoe	All Other Counties	Unknown
<b>Total</b>					
Discharges	93	65	12	16	0
Rate*	0.9	0.9	0.8	1.0	---
95% C.I.	(0.7-1.1)	(0.7-1.2)	(0.4-1.3)	(0.6-1.7)	---
<b>Gender</b>					
Male	61	43	10	8	0
Rate*	1.2	1.3	1.4	---	---
95% C.I.	(0.9-1.6)	(0.9-1.8)	(0.7-2.6)	---	---
Female	32	22	2	8	0
Rate*	0.6	0.6	---	---	---
95% C.I.	(0.4-0.9)	(0.4-1.0)	---	---	---
Other/Unknown	0	0	0	0	0
<b>Inpatient Discharge Charges (\$)</b>					
Total Charges	\$2,038,956	\$1,551,404	\$293,688	\$193,864	\$0
Average Charges	\$21,924	\$23,868	\$24,474	\$12,117	\$0
Median Charges	\$14,136	\$13,530	\$21,745	\$11,656	\$0
<b>Discharge Length of Stay (LOS) (Days)</b>					
Total LOS	316	234	37	45	0
Average LOS	3.4	3.6	3.1	2.8	0.0
Median LOS	2.0	2.0	2.5	1.5	0.0

\* Rates are per 100,000 population and are age-adjusted to the 2000 US Standard population.

Note: The "---" is used for rates calculated on numbers less than ten. Caution should be used when comparing inpatient hospital discharge data to other data sources, since it is occurrence-based data. Please See Technical Notes for more information.

**Table 258. Skin Cancer Mortality by Age Group and County/Region of Residence, Nevada Residents, 1999-2003**

Category	County/Region of Residence			
	Nevada Total	Clark	Washoe	All Other Counties
<b>Total</b>				
Deaths	289	185	48	56
Rate*	2.9	2.7	3.0	3.6
95% C.I.	(2.6-3.3)	(2.3-3.2)	(2.2-4.0)	(2.7-4.7)
<b>Age Group</b>				
<1	0	0	0	0
Rate*	---	---	---	---
95% C.I.	---	---	---	---
1-4	0	0	0	0
Rate*	---	---	---	---
95% C.I.	---	---	---	---
5-14	0	0	0	0
Rate*	---	---	---	---
95% C.I.	---	---	---	---
15-24	3	1	2	0
Rate*	---	---	---	---
95% C.I.	---	---	---	---
25-34	8	7	1	0
Rate*	---	---	---	---
95% C.I.	---	---	---	---
35-44	34	19	9	6
Rate*	2.1	1.7	---	---
95% C.I.	(1.36-2.74)	(0.91-2.40)	---	---
45-54	55	33	13	9
Rate*	3.9	3.5	5.1	---
95% C.I.	(2.85-4.89)	(2.28-4.65)	(2.34-7.93)	---
55-64	60	43	4	13
Rate*	5.8	6.1	---	8.2
95% C.I.	(4.36-7.31)	(4.27-7.92)	---	(3.74-12.64)
65-74	63	39	6	18
Rate*	9.2	8.3	---	16.1
95% C.I.	(6.90-11.42)	(5.68-10.87)	---	(8.63-23.46)
75-84	52	35	10	7
Rate*	13.3	13.2	16.3	---
95% C.I.	(9.65-16.86)	(8.82-17.56)	(6.18-26.34)	---
85+	14	8	3	3
Rate*	15.9	---	---	---
95% C.I.	(7.58-24.25)	---	---	---
Unknown	0	0	0	0

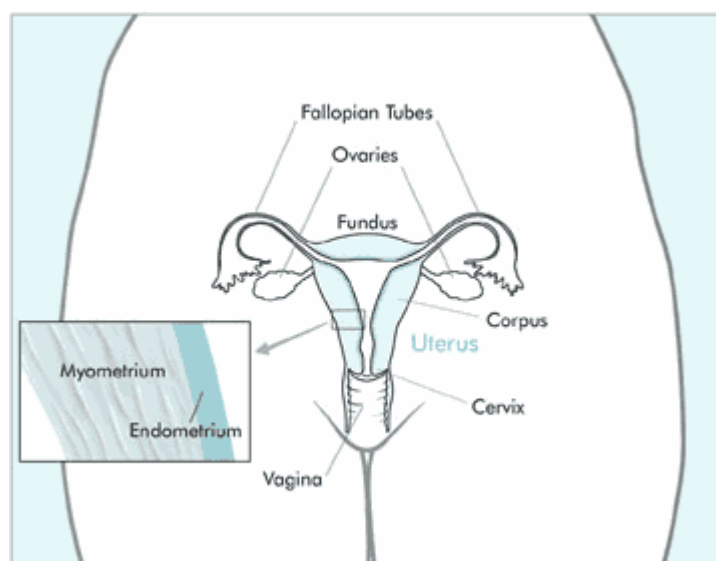
\* Rates are per 100,000 age-specific population.

Note: The "---" is used for rates calculated on numbers less than ten.

## UTERINE CANCER

### GENERAL PROFILE<sup>4</sup>

**Figure 167. Anatomical Drawing of Female Reproductive System<sup>4</sup>**



**General Anatomy:** The uterus is part of a woman's reproductive system. It is the hollow, pear-shaped organ where a baby grows. The uterus is in the pelvis between the bladder and the rectum. The narrow, lower portion of the uterus is the cervix. The broad, middle part of the uterus is the body, or corpus. The dome-shaped top of the uterus is the fundus. The fallopian tubes extend from either side of the top of the uterus to the ovaries.

The wall of the uterus has two layers of tissue. The inner layer, or lining, is the endometrium. The outer layer is muscle tissue called the myometrium. In women of childbearing age, the lining of the uterus grows and thickens each month to prepare for pregnancy. If a woman does not become pregnant, the thick, bloody lining flows out of the body through the vagina. This flow is called menstruation.

**Risk Factors:** Age (Women over 50), Endometrial hyperplasia, Hormone replacement therapy (HRT), Obesity and related conditions, Women taking the drug Tamoxifen, Race (White Females), and Inherited form of Colorectal Cancer.

**Signs and Symptoms:** Unusual vaginal bleeding or discharge, difficult or painful urination, pain during intercourse, and pain in the pelvic area.

**Diagnosing the Cancer:** Pelvic exam, Pap test, transvaginal ultrasound, and biopsy.

**Treatment:** Treatment options include: surgery (Hysterectomy), radiation therapy and hormonal therapy.

**Table 259. Uterine Cancer Cases by Age Group and County/Region of Residence at Diagnosis, Nevada Residents (1999-2003) and SEER-13 (1998-2002)**

Category	County/Region of Residence					
	Nevada Total	Clark	Washoe	All Other Counties	Unknown	SEER 13 (1998-2002)
<b>Total</b>						
Cases	984	685	157	142	0	23,466
Rate*	9.7	9.7	9.7	9.7	---	13.2
95% C.I.	(9.1-10.4)	(9.1-10.4)	(9.1-10.4)	(9.1-10.4)	---	(13.0-13.3)
<b>Gender</b>						
Male	---	---	---	---	---	---
Rate*	---	---	---	---	---	---
95% C.I.	---	---	---	---	---	---
Female	984	984	984	984	0	23,226
Rate*	18.8	18.8	18.8	18.8	---	24.5
95% C.I.	(17.6-20.0)	(17.6-20.0)	(17.6-20.0)	(17.6-20.0)	---	(24.2-24.8)
Other/Unknown	0	0	0	0	0	0
<b>Race/Ethnicity</b>						
White	839	567	141	131	0	19,682
Rate*	20.4	20.4	20.4	20.4	---	26.1
95% C.I.	(19.0-21.8)	(19.0-21.8)	(19.0-21.8)	(19.0-21.8)	---	(25.7-26.5)
Black	39	39	0	0	0	1,536
Rate*	14.4	14.4	---	---	---	18.1
95% C.I.	(10.1-20.2)	(10.1-20.2)	---	---	---	(17.2-19.1)
Native American	5	0	2	3	0	107
Rate*	---	---	---	---	---	10.2
95% C.I.	---	---	---	---	---	(8.2-12.5)
Asian	38	27	7	4	0	1,762
Rate*	11.2	11.2	---	---	---	17.2
95% C.I.	(7.8-16.0)	(7.8-16.0)	---	---	---	(16.4-18.1)
Hispanic	50	40	6	4	0	1,742
Rate*	10.1	10.1	---	---	---	16.5
95% C.I.	(7.3-13.9)	(7.3-13.9)	---	---	---	(15.7-17.3)
Other/Unknown	13	12	1	0	0	162

\* Rates are per 100,000 age-specific female population.

Note: The "---" is used for rates calculated on numbers less than ten and SEER numbers less than five. See Technical Notes for more information.



**Table 260. Uterine Cancer Inpatient Discharges by Gender, Charges, Length of Stay, and County/Region of Residence, Nevada Residents, 1999-2003**

Category	County/Region of Residence				
	Nevada Total	Clark	Washoe	All Other Counties	Unknown
<b>Total</b>					
Discharges	896	636	147	113	0
Rate*	8.8	9.1	8.9	7.2	---
95% C.I.	(8.2-9.4)	(8.4-9.8)	(7.5-10.5)	(5.9-8.7)	---
<b>Gender</b>					
Male	---	---	---	---	---
Rate*	---	---	---	---	---
95% C.I.	---	---	---	---	---
Female	896	636	147	113	0
Rate*	17.0	17.6	17.2	14.0	---
95% C.I.	(15.9-18.2)	(16.3-19.1)	(14.5-20.3)	(11.6-17.0)	---
Other/Unknown	0	0	0	0	0
<b>Inpatient Discharge Charges (\$)</b>					
Total Charges	\$28,200,384	\$19,906,653	\$4,723,380	\$3,570,351	\$0
Average Charges	\$31,474	\$31,300	\$32,132	\$31,596	\$0
Median Charges	\$25,099	\$23,105	\$31,437	\$26,139	\$0
<b>Discharge Length of Stay (LOS) (Days)</b>					
Total LOS	4,082	2,959	636	487	0
Average LOS	4.6	4.7	4.3	4.3	0.0
Median LOS	3.0	3.0	3.0	3.0	0.0

\* Rates are per 100,000 population and are age-adjusted to the 2000 US Standard population.

Note: The "---" is used for rates calculated on numbers less than ten. Caution should be used when comparing inpatient hospital discharge data to other data sources, since it is occurrence-based data. Please See Technical Notes for more information.

**Table 261. Uterine Cancer Mortality by Age Group and County/Region of Residence, Nevada Residents, 1999-2003**

Category	County/Region of Residence			
	Nevada Total	Clark	Washoe	All Other Counties
<b>Total</b>				
Deaths	149	110	21	18
Rate*	3.0	3.3	2.6	2.3
95% C.I.	(2.6-3.6)	(2.7-4.0)	(1.6-4.0)	(1.4-3.7)
<b>Age Group</b>				
<1	0	0	0	0
Rate*	---	---	---	---
95% C.I.	---	---	---	---
1-4	0	0	0	0
Rate*	---	---	---	---
95% C.I.	---	---	---	---
5-14	0	0	0	0
Rate*	---	---	---	---
95% C.I.	---	---	---	---
15-24	0	0	0	0
Rate*	---	---	---	---
95% C.I.	---	---	---	---
25-34	2	2	0	0
Rate*	---	---	---	---
95% C.I.	---	---	---	---
35-44	7	7	0	0
Rate*	---	---	---	---
95% C.I.	---	---	---	---
45-54	20	17	2	1
Rate*	2.9	3.6	---	---
95% C.I.	(1.60-4.10)	(1.90-5.34)	---	---
55-64	24	18	3	3
Rate*	4.6	5.0	---	---
95% C.I.	(2.77-6.46)	(2.68-7.29)	---	---
65-74	36	25	6	5
Rate*	10.3	10.5	---	---
95% C.I.	(6.96-13.71)	(6.36-14.56)	---	---
75-84	37	27	5	5
Rate*	17.2	18.6	---	---
95% C.I.	(11.67-22.76)	(11.61-25.67)	---	---
85+	23	14	5	4
Rate*	39.1	37.3	---	---
95% C.I.	(23.09-55.01)	(17.74-56.78)	---	---
Unknown	0	0	0	0

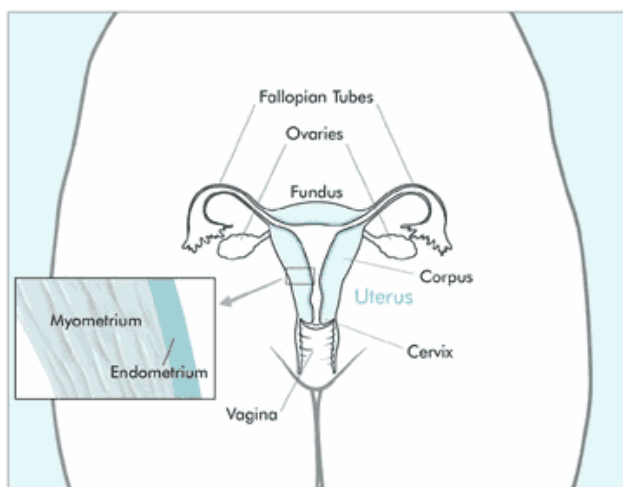
\* Rates are per 100,000 age-specific female population.

Note: The "---" is used for rates calculated on numbers less than ten.

## OVARIAN CANCER

### GENERAL PROFILE<sup>4</sup>

**Figure 168. Anatomical Drawing of Female Reproductive System<sup>4</sup>**



**General Anatomy:** The ovaries are a pair of organs in the female reproductive system. They are located in the pelvis, one on each side of the uterus. Each ovary is about the size and shape of an almond. The ovaries have two functions: they produce eggs and female hormones (chemicals that control the way certain cells or organs function).

Every month, during the menstrual cycle, an egg is released from one ovary in a process called ovulation. The egg travels from the ovary through the fallopian tube to the uterus. The ovaries are also the main source of the female hormones estrogen and progesterone, which influence the development of a woman's breasts, body shape, and body hair. They also regulate the menstrual cycle and pregnancy.

**Risk Factors:** Family History, Age (Women over 50, especially over 60), Women who never had children, Personal history of Breast or Colorectal Cancer, Use of Fertility drugs, Use of Talc, and Hormone replacement therapy (HRT).

**Signs and Symptoms:** General abdominal discomfort and/or pain (gas, indigestion, pressure, swelling, bloating, cramps), Nausea, diarrhea, constipation, or frequent urination, Loss of appetite, Feeling of fullness even after a light meal, Weight gain or loss with no known reason, and Abnormal bleeding from the vagina.

**Diagnosing the Cancer:** Pelvic exam, ultrasound, CA-125 assay blood test, lower gastrointestinal (GI) series, or barium enema (Colon and Rectum X-rays), CT (or CAT) scan, and biopsy.

**Treatment:** Surgery (hysterectomy with bilateral Salpingo-oophorectomy), chemotherapy, radiation therapy, and clinical trials.

**Table 262. Ovarian Cancer Cases by Age Group and County/Region of Residence at Diagnosis, Nevada Residents (1999-2003) and SEER-13 (1998-2002)**

Category	County/Region of Residence					
	Nevada Total	Clark	Washoe	All Other Counties	Unknown	SEER 13 (1998-2002)
<b>Total</b>						
Cases	752	514	134	104	0	13,576
Rate*	7.5	7.5	7.5	7.5	---	7.6
95% C.I.	(7.0-8.1)	(7.0-8.1)	(7.0-8.1)	(7.0-8.1)	---	(7.4-7.7)
<b>Gender</b>						
Male	---	---	---	---	---	---
Rate*	---	---	---	---	---	---
95% C.I.	---	---	---	---	---	---
Female	752	752	752	752	0	13,333
Rate*	14.5	14.5	14.5	14.5	---	13.9
95% C.I.	(13.5-15.6)	(13.5-15.6)	(13.5-15.6)	(13.5-15.6)	---	(13.7-14.2)
Other/Unknown	0	0	0	0	0	0
<b>Race/Ethnicity</b>						
White	633	430	114	89	0	11,279
Rate*	15.6	15.6	15.6	15.6	---	14.8
95% C.I.	(14.4-16.9)	(14.4-16.9)	(14.4-16.9)	(14.4-16.9)	---	(14.6-15.1)
Black	34	29	4	1	0	875
Rate*	13.6	13.6	---	---	---	10.1
95% C.I.	(9.2-19.6)	(9.2-19.6)	---	---	---	(9.4-10.8)
Native American	3	0	0	3	0	86
Rate*	---	---	---	---	---	9.0
95% C.I.	---	---	---	---	---	(7.1-11.4)
Asian	31	24	6	1	0	1,062
Rate*	9.9	9.9	---	---	---	10.3
95% C.I.	(6.6-14.6)	(6.6-14.6)	---	---	---	(9.7-10.9)
Hispanic	45	29	10	6	0	1,195
Rate*	7.8	7.8	7.8	---	---	11.2
95% C.I.	(5.5-11.2)	(5.5-11.2)	(5.5-11.2)	---	---	(10.6-11.9)
Other/Unknown	6	2	0	4	0	46

\* Rates are per 100,000 age-specific female population.

Note: The "---" is used for rates calculated on numbers less than ten and SEER numbers less than five. See Technical Notes for more information.

**Table 263. Ovarian Cancer Inpatient Discharges by Gender, Charges, Length of Stay, and County/Region of Residence, Nevada Residents, 1999-2003**

Category	County/Region of Residence				
	Nevada Total	Clark	Washoe	All Other Counties	Unknown
<b>Total</b>					
Discharges	709	469	148	91	1
Rate*	6.9	6.7	8.9	5.9	---
95% C.I.	(6.4-7.5)	(6.1-7.4)	(7.5-10.6)	(4.7-7.3)	---
<b>Gender</b>					
Male	---	---	---	---	---
Rate*	---	---	---	---	---
95% C.I.	---	---	---	---	---
Female	709	469	148	91	1
Rate*	13.5	13.1	17.2	11.6	---
95% C.I.	(12.6-14.6)	(11.9-14.4)	(14.6-20.3)	(9.3-14.4)	---
Other/Unknown	0	0	0	0	0
<b>Inpatient Discharge Charges (\$)</b>					
Total Charges	\$41,821,261	\$26,772,062	\$10,506,016	\$4,464,708	\$78,475
Average Charges	\$58,986	\$57,083	\$70,987	\$49,063	\$78,475
Median Charges	\$37,768	\$35,164	\$51,756	\$35,836	\$78,475
<b>Discharge Length of Stay (LOS) (Days)</b>					
Total LOS	6,165	3,832	1,627	683	23
Average LOS	8.7	8.2	11.0	7.5	23.0
Median LOS	6.0	6.0	9.0	6.0	23.0

\* Rates are per 100,000 population and are age-adjusted to the 2000 US Standard population.

Note: The "---" is used for rates calculated on numbers less than ten. Caution should be used when comparing inpatient hospital discharge data to other data sources, since it is occurrence-based data. Please See Technical Notes for more information.

**Table 264. Ovarian Cancer Mortality by Age Group and County/Region of Residence, Nevada Residents, 1999-2003**

Category	County/Region of Residence			
	Nevada Total	Clark	Washoe	All Other Counties
<b>Total</b>				
<b>Deaths</b>	426	300	76	50
<b>Rate*</b>	8.4	8.7	9.1	6.2
<b>95% C.I.</b>	(7.6-9.2)	(7.7-9.7)	(7.2-11.5)	(4.6-8.2)
<b>Age Group</b>				
<1	0	0	0	0
Rate*	---	---	---	---
95% C.I.	---	---	---	---
1-4	0	0	0	0
Rate*	---	---	---	---
95% C.I.	---	---	---	---
5-14	0	0	0	0
Rate*	---	---	---	---
95% C.I.	---	---	---	---
15-24	0	0	0	0
Rate*	---	---	---	---
95% C.I.	---	---	---	---
25-34	2	1	1	0
Rate*	---	---	---	---
95% C.I.	---	---	---	---
35-44	17	14	2	1
Rate*	2.1	2.6	---	---
95% C.I.	(1.12-3.15)	(1.22-3.90)	---	---
45-54	61	48	11	2
Rate*	8.7	10.2	8.9	---
95% C.I.	(6.52-10.89)	(7.32-13.10)	(3.62-14.10)	---
55-64	87	56	15	16
Rate*	16.7	15.5	18.5	20.5
95% C.I.	(13.20-20.23)	(11.44-19.56)	(9.14-27.88)	(10.43-30.47)
65-74	115	83	21	11
Rate*	33.0	34.7	39.3	19.7
95% C.I.	(26.97-39.03)	(27.25-42.19)	(22.48-56.07)	(8.04-31.28)
75-84	113	81	18	14
Rate*	52.6	55.9	51.4	39.9
95% C.I.	(42.87-62.25)	(43.74-68.10)	(27.63-75.07)	(19.00-60.82)
85+	31	17	8	6
Rate*	52.6	45.3	---	---
95% C.I.	(34.11-71.16)	(23.74-66.76)	---	---
Unknown	0	0	0	0

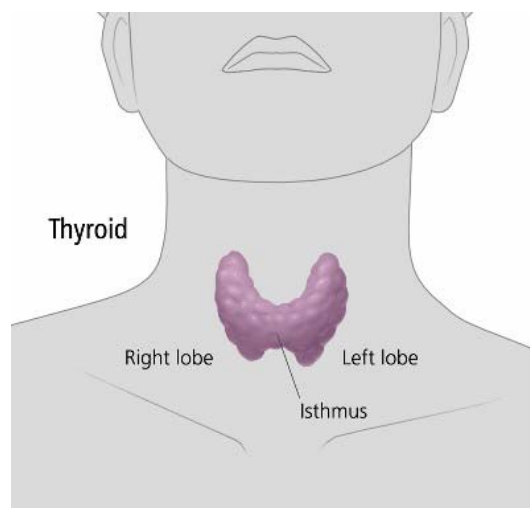
\* Rates are per 100,000 age-specific female population.

Note: The "---" is used for rates calculated on numbers less than ten.

## THYROID GLAND CANCER

### GENERAL PROFILE<sup>4</sup>

**Figure 169. Anatomical Drawing of the Thyroid Gland<sup>4</sup>**



**General Anatomy:** The thyroid is a gland in the neck. It has two kinds of cells that make hormones. Follicular cells make thyroid hormone, which affects heart rate, body temperature, and energy level. C cells make calcitonin, a hormone that helps control the level of calcium in the blood. The thyroid is shaped like a butterfly and lies at the front of the neck, beneath the voice box (larynx). It has two parts, or lobes. The two lobes are separated by a thin section called the isthmus. A healthy thyroid is a little larger than a quarter. It usually cannot be felt through the skin. A swollen lobe might look or feel like a lump in the front of the neck. A swollen thyroid is called a goiter. Most goiters are caused by not enough iodine in the diet.

**Risk Factors:** Exposure to radiation, Family history, Being female, Age (over 40), Race (Whites are more likely to be diagnosed with Thyroid Cancer than Blacks, as a racial/ethnic group,), and not enough iodine in the diet.

**Signs and Symptoms:** A lump, or nodule, in the front of the neck near the Adam's apple, hoarseness or difficulty speaking in a normal voice, swollen lymph nodes, especially in the neck, difficulty swallowing or breathing, or pain in the throat or neck.

**Diagnosing the Cancer:** Physical exam, blood tests, ultrasonography, radionuclide scanning, and fine-needle aspiration.

**Treatment:** surgery (Total thyroidectomy, Lobectomy), radioactive iodine, hormone treatment, external radiation, and chemotherapy.

**Table 265. Thyroid Gland Cancer Cases by Age Group and County/Region of Residence at Diagnosis, Nevada Residents (1999-2003) and SEER-13 (1998-2002)**

Category	County/Region of Residence					
	Nevada Total	Clark	Washoe	All Other Counties	Unknown	SEER 13 (1998-2002)
<b>Total</b>						
Cases	982	699	180	103	0	14,527
Rate*	9.2	9.2	9.2	9.2	---	7.6
95% C.I.	(8.7-9.8)	(8.7-9.8)	(8.7-9.8)	(8.7-9.8)	---	(7.5-7.7)
<b>Gender</b>						
Male	219	219	219	219	0	3,335
Rate*	4.2	4.2	4.2	4.2	---	3.8
95% C.I.	(3.6-4.8)	(3.6-4.8)	(3.6-4.8)	(3.6-4.8)	---	(3.7-4.0)
Female	763	763	763	763	0	10,138
Rate*	14.5	14.5	14.5	14.5	---	10.5
95% C.I.	(13.5-15.6)	(13.5-15.6)	(13.5-15.6)	(13.5-15.6)	---	(10.2-10.7)
Other/Unknown	0	0	0	0	0	0
<b>Race/Ethnicity</b>						
White	792	536	159	97	0	10,909
Rate*	10.6	10.6	10.6	10.6	---	7.5
95% C.I.	(9.8-11.3)	(9.8-11.3)	(9.8-11.3)	(9.8-11.3)	---	(7.3-7.6)
Black	35	30	4	1	0	734
Rate*	5.5	5.5	---	---	---	4.2
95% C.I.	(3.7-8.3)	(3.7-8.3)	---	---	---	(3.8-4.5)
Native American	2	0	1	1	0	93
Rate*	---	---	---	---	---	4.0
95% C.I.	---	---	---	---	---	(3.2-3.2)
Asian	63	51	12	0	0	1,651
Rate*	11.1	11.1	11.1	---	---	8.1
95% C.I.	(8.2-16.0)	(8.2-16.0)	(8.2-16.0)	---	---	(7.7-8.5)
Hispanic	75	68	4	3	0	1,721
Rate*	4.8	4.8	---	---	---	6.3
95% C.I.	(3.6-6.2)	(3.6-6.2)	---	---	---	(6.0-6.7)
Other/Unknown	15	14	0	1	0	115

\* Rates are per 100,000 age-specific population.

Note: The "---" is used for rates calculated on numbers less than ten and SEER numbers less than five. See Technical Notes for more information.



**Table 266. Thyroid Gland Cancer Inpatient Discharges by Gender, Charges, Length of Stay, and County/Region of Residence, Nevada Residents, 1999-2003**

Category	County/Region of Residence				
	Nevada Total	Clark	Washoe	All Other Counties	Unknown
<b>Total</b>					
Discharges	1,401	1,148	163	90	0
Rate*	13.1	15.6	9.1	6.0	---
95% C.I.	(12.5-13.9)	(14.7-16.5)	(7.8-10.7)	(4.8-7.4)	---
<b>Gender</b>					
Male	295	237	32	26	0
Rate*	5.6	6.6	3.5	3.3	---
95% C.I.	(5.0-6.3)	(5.8-7.6)	(2.4-5.0)	(2.1-4.9)	---
Female	1,106	911	131	64	0
Rate*	21.0	25.0	14.9	8.7	---
95% C.I.	(19.8-22.3)	(23.4-26.7)	(12.4-17.7)	(6.7-11.2)	---
Other/Unknown	0	0	0	0	0
<b>Inpatient Discharge Charges (\$)</b>					
Total Charges	\$20,510,365	\$16,517,641	\$2,737,823	\$1,254,901	\$0
Average Charges	\$14,640	\$14,388	\$16,796	\$13,943	\$0
Median Charges	\$11,811	\$10,904	\$14,243	\$12,738	\$0
<b>Discharge Length of Stay (LOS) (Days)</b>					
Total LOS	2,956	2,410	368	178	0
Average LOS	2.1	2.1	2.3	2.0	0.0
Median LOS	2.0	2.0	2.0	2.0	0.0

\* Rates are per 100,000 population and are age-adjusted to the 2000 US Standard population.

Note: The "---" is used for rates calculated on numbers less than ten. Caution should be used when comparing inpatient hospital discharge data to other data sources, since it is occurrence-based data. Please See Technical Notes for more information.

**Table 267. Thyroid Gland Cancer Mortality by Age Group and County/Region of Residence, Nevada Residents, 1999-2003**

Category	County/Region of Residence			
	Nevada Total	Clark	Washoe	All Other Counties
<b>Total</b>				
Deaths	32	24	4	4
Rate*	0.3	0.4	0.0	0.0
95% C.I.	(0.2-0.5)	(0.2-0.6)	---	---
<b>Age Group</b>				
<1	0	0	0	0
Rate*	---	---	---	---
95% C.I.	---	---	---	---
1-4	0	0	0	0
Rate*	---	---	---	---
95% C.I.	---	---	---	---
5-14	0	0	0	0
Rate*	---	---	---	---
95% C.I.	---	---	---	---
15-24	0	0	0	0
Rate*	---	---	---	---
95% C.I.	---	---	---	---
25-34	0	0	0	0
Rate*	---	---	---	---
95% C.I.	---	---	---	---
35-44	1	1	0	0
Rate*	---	---	---	---
95% C.I.	---	---	---	---
45-54	3	2	0	1
Rate*	---	---	---	---
95% C.I.	---	---	---	---
55-64	6	4	2	0
Rate*	---	---	---	---
95% C.I.	---	---	---	---
65-74	8	7	0	1
Rate*	---	---	---	---
95% C.I.	---	---	---	---
75-84	11	8	1	2
Rate*	2.8	---	---	---
95% C.I.	(1.15-4.46)	---	---	---
85+	3	2	1	0
Rate*	---	---	---	---
95% C.I.	---	---	---	---
Unknown	0	0	0	0

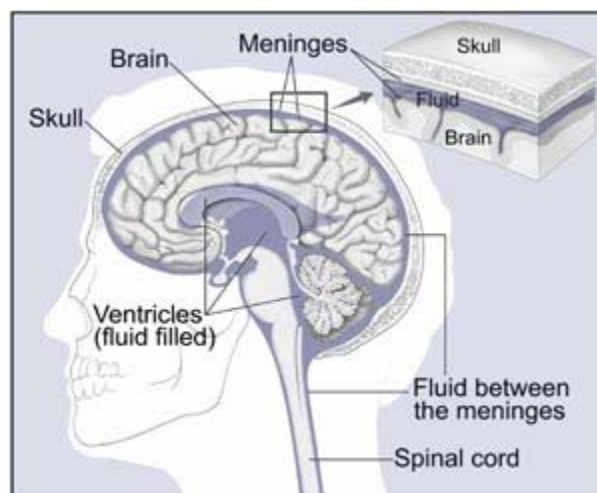
\* Rates are per 100,000 age-specific population.

Note: The "---" is used for rates calculated on numbers less than ten.

## BRAIN AND OTHER CENTRAL NERVOUS SYSTEM CANCER

### GENERAL PROFILE<sup>4</sup>

**Figure 170. Anatomical Drawing of the Brain and Nearby Structures<sup>4</sup>**



**General Anatomy:** The brain is a soft, spongy mass of tissue. It is protected by the bones of the skull and three thin membranes called meninges. Watery fluid called cerebrospinal fluid cushions the brain. This fluid flows through spaces between the meninges and through spaces within the brain called ventricles. A network of nerves carries messages back and forth between the brain and the rest of the body. Some nerves go directly from the brain to the eyes, ears, and other parts of the head. Other nerves run through the spinal cord to connect the brain with the other parts of the body. Within the brain and spinal cord, glial cells surround nerve cells and hold them in place.

**Risk Factors:** Being male, being white, age (over 70 years of age), family history, and exposure to: radiation or certain chemicals: formaldehyde, vinyl chloride, and acrylonitrile.

**Signs and Symptoms:** Headaches (usually worse in the morning), nausea or vomiting, changes in speech, vision, or hearing, problems balancing or walking, changes in mood, personality, or ability to concentrate, problems with memory, muscle jerking or twitching (seizures or convulsions), and numbness or tingling in the arms or legs.

**Diagnosing the Cancer:** Physical exam, neurologic exam, computed tomography (CAT) scan, magnetic resonance imaging (MRI), angiogram, skull x-ray, spinal tap, myelogram, and biopsy.

**Treatment:** surgery (Craniotomy), radiation therapy (Fractionation, Hyperfractionation, Stereotactic, 3-dimensional conformal, and Proton beam), and chemotherapy

**Table 268. Brain and Other Central Nervous System Cancer Cases by Age Group and County/Region of Residence at Diagnosis, Nevada Residents (1999-2003) and SEER-13 (1998-2002)**

Category	County/Region of Residence					
	Nevada Total	Clark	Washoe	All Other Counties	Unknown	SEER 13 (1998-2002)
<b>Total</b>						
Cases	649	417	116	116	0	11,742
Rate*	6.5	6.5	6.5	6.5	---	6.4
95% C.I.	(6.0-7.0)	(6.0-7.0)	(6.0-7.0)	(6.0-7.0)	---	(6.3-6.5)
<b>Gender</b>						
Male	377	377	377	377	0	6,396
Rate*	7.7	7.7	7.7	7.7	---	7.6
95% C.I.	(6.9-8.5)	(6.9-8.5)	(6.9-8.5)	(6.9-8.5)	---	(7.4-7.8)
Female	272	272	272	272	0	5,157
Rate*	5.3	5.3	5.3	5.3	---	5.3
95% C.I.	(4.7-6.0)	(4.7-6.0)	(4.7-6.0)	(4.7-6.0)	---	(5.2-5.5)
Other/Unknown	0	0	0	0	0	0
<b>Race/Ethnicity</b>						
White	539	331	98	110	0	10,116
Rate*	7.1	7.1	7.1	7.1	---	7.1
95% C.I.	(6.5-7.7)	(6.5-7.7)	(6.5-7.7)	(6.5-7.7)	---	(7.0-7.2)
Black	26	24	2	0	0	714
Rate*	4.6	4.6	---	---	---	4.0
95% C.I.	(2.9-7.4)	(2.9-7.4)	---	---	---	(3.7-4.3)
Native American	0	0	0	0	0	57
Rate*	---	---	---	---	---	2.5
95% C.I.	---	---	---	---	---	(1.8-1.8)
Asian	20	17	2	1	0	638
Rate*	3.4	3.4	---	---	---	3.3
95% C.I.	(2.1-5.6)	(2.1-5.6)	---	---	---	(3.0-3.6)
Hispanic	58	41	13	4	0	1,300
Rate*	5.1	5.1	5.1	---	---	5.1
95% C.I.	(3.5-7.7)	(3.5-7.7)	(3.5-7.7)	---	---	(4.7-5.4)
Other/Unknown	6	4	1	1	0	40

\* Rates are per 100,000 age-specific population.

Note: The "---" is used for rates calculated on numbers less than ten and SEER numbers less than five. See Technical Notes for more information.

**Table 269. Brain and Other Central Nervous System Cancer Inpatient Discharges by Gender, Charges, Length of Stay, and County/Region of Residence, Nevada Residents, 1999-2003**

Category	County/Region of Residence				
	Nevada Total	Clark	Washoe	All Other Counties	Unknown
<b>Total</b>					
Discharges	891	626	130	135	0
Rate*	8.7	8.9	7.7	8.6	---
95% C.I.	(8.1-9.3)	(8.2-9.6)	(6.4-9.2)	(7.2-10.3)	---
<b>Gender</b>					
Male	491	333	79	79	0
Rate*	9.6	9.5	9.3	10.1	---
95% C.I.	(8.8-10.6)	(8.5-10.7)	(7.3-11.9)	(8.0-12.9)	---
Female	400	293	51	56	0
Rate*	7.7	8.3	6.0	7.2	---
95% C.I.	(7.0-8.6)	(7.3-9.3)	(4.4-7.9)	(5.4-9.5)	---
Other/Unknown	0	0	0	0	0
<b>Inpatient Discharge Charges (\$)</b>					
Total Charges	\$38,980,351	\$29,411,876	\$4,718,608	\$4,849,867	\$0
Average Charges	\$43,749	\$46,984	\$36,297	\$35,925	\$0
Median Charges	\$33,685	\$34,865	\$33,832	\$29,714	\$0
<b>Discharge Length of Stay (LOS) (Days)</b>					
Total LOS	6,439	4,633	922	884	0
Average LOS	7.2	7.4	7.1	6.5	0.0
Median LOS	5.0	5.0	4.0	5.0	0.0

\* Rates are per 100,000 population and are age-adjusted to the 2000 US Standard population.

Note: The "---" is used for rates calculated on numbers less than ten. Caution should be used when comparing inpatient hospital discharge data to other data sources, since it is occurrence-based data. Please See Technical Notes for more information.

**Table 270. Brain and Other Central Nervous System Cancer Mortality by Age Group and County/Region of Residence, Nevada Residents, 1999-2003**

Category	County/Region of Residence			
	Nevada Total	Clark	Washoe	All Other Counties
<b>Total</b>				
Deaths	402	267	63	72
Rate*	4.1	3.9	4.0	4.6
95% C.I.	(3.7-4.5)	(3.5-4.5)	(3.0-5.1)	(3.6-5.9)
<b>Age Group</b>				
<1	0	0	0	0
Rate*	---	---	---	---
95% C.I.	---	---	---	---
1-4	5	4	1	0
Rate*	---	---	---	---
95% C.I.	---	---	---	---
5-14	7	4	2	1
Rate*	---	---	---	---
95% C.I.	---	---	---	---
15-24	8	6	1	1
Rate*	---	---	---	---
95% C.I.	---	---	---	---
25-34	13	10	3	0
Rate*	0.8	0.9	---	---
95% C.I.	(0.38-1.29)	(0.33-1.41)	---	---
35-44	30	18	6	6
Rate*	1.8	1.6	---	---
95% C.I.	(1.16-2.46)	(0.84-2.29)	---	---
45-54	57	41	10	6
Rate*	4.0	4.3	4.0	---
95% C.I.	(2.97-5.05)	(2.99-5.62)	(1.50-6.40)	---
55-64	84	56	11	17
Rate*	8.2	7.9	6.7	10.7
95% C.I.	(6.42-9.91)	(5.86-10.02)	(2.74-10.65)	(5.62-15.80)
65-74	96	63	14	19
Rate*	14.0	13.4	13.4	16.9
95% C.I.	(11.16-16.75)	(10.07-16.67)	(6.38-20.43)	(9.32-24.56)
75-84	80	53	8	19
Rate*	20.4	20.0	---	29.1
95% C.I.	(15.93-24.87)	(14.59-25.35)	---	(16.00-42.14)
85+	22	12	7	3
Rate*	25.0	21.6	---	---
95% C.I.	(14.56-35.45)	(9.37-33.78)	---	---
Unknown	0	0	0	0

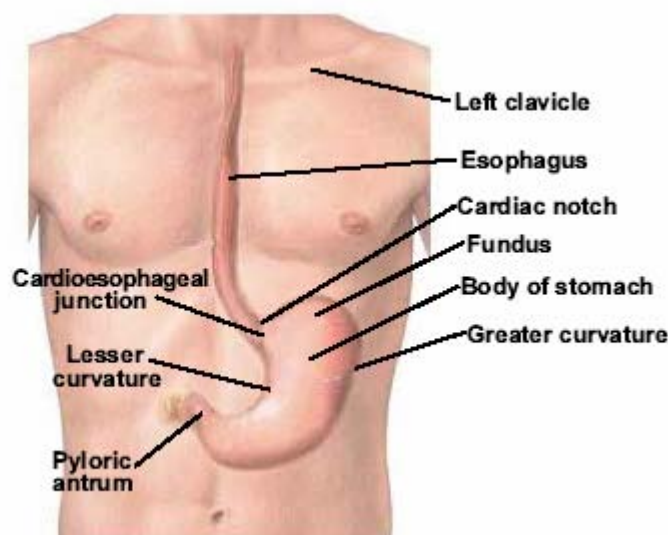
\* Rates are per 100,000 age-specific population.

Note: The "---" is used for rates calculated on numbers less than ten.

## STOMACH CANCER

### GENERAL PROFILE<sup>4</sup>

**Figure 171. Anatomical Drawing of the Esophagus and Stomach<sup>5</sup>**



**General Anatomy:** The stomach is part of the digestive system. It is located in the upper abdomen, under the ribs. The upper part of the stomach connects to the esophagus, and the lower part leads into the small intestine. When food enters the stomach, muscles in the stomach wall create a rippling motion that mixes and mashes the food. At the same time, juices made by glands in the lining of the stomach help digest the food. After about 3 hours, the food becomes a liquid and moves into the small intestine, where digestion continues.

**Risk Factors:** While the cause of Stomach Cancer is still unknown, some people are more likely to be diagnosed with Stomach Cancer. It is more common in: people over 55 years of age, males, Blacks as a racial/ethnic group, and people who have had stomach surgery or have pernicious anemia, achlorhydria, or gastric atrophy (which generally result in lower than normal amounts of digestive juices) have an increased risk. Stomach Cancer is also more common in parts of the world like Japan, Korea, parts of Eastern Europe, and Latin America than in the United States.

**Signs and Symptoms:** Indigestion or a burning sensation (heartburn), discomfort or pain in the abdomen, nausea and vomiting, diarrhea or constipation, bloating of the stomach after meals, loss of appetite, weakness and fatigue, and bleeding (vomiting blood or having blood in the stool).

**Diagnosing the Cancer:** Fecal occult blood test, upper gastrointestinal (GI) x-ray series, and endoscopy are some of the common ways of diagnosing Stomach Cancer.

**Treatment:** surgery (Gastrectomy), chemotherapy, radiation therapy, and biological therapy.

**Table 271. Stomach Cancer Mortality by Age Group and County/Region of Residence at Diagnosis, Nevada Residents, 1999-2003**

Category	County/Region of Residence					
	Nevada Total	Clark	Washoe	All Other Counties	Unknown	SEER 13 (1998-2002)
<b>Total</b>						
Cases	607	437	99	71	0	15,338
Rate*	6.4	6.4	6.4	6.4	---	8.8
95% C.I.	(5.9-6.9)	(5.9-6.9)	(5.9-6.9)	(5.9-6.9)	---	(8.6-8.9)
<b>Gender</b>						
Male	399	399	399	399	0	9,157
Rate*	8.9	8.9	8.9	8.9	---	12.6
95% C.I.	(8.0-9.9)	(8.0-9.9)	(8.0-9.9)	(8.0-9.9)	---	(12.3-12.9)
Female	208	208	208	208	0	6,049
Rate*	4.2	4.2	4.2	4.2	---	6.1
95% C.I.	(3.6-4.8)	(3.6-4.8)	(3.6-4.8)	(3.6-4.8)	---	(6.0-6.3)
Other/Unknown	0	0	0	0	0	0
<b>Race/Ethnicity</b>						
White	457	314	77	66	0	10,474
Rate*	5.9	5.9	5.9	5.9	---	7.5
95% C.I.	(5.3-6.5)	(5.3-6.5)	(5.3-6.5)	(5.3-6.5)	---	(7.4-7.7)
Black	51	43	7	1	0	1,845
Rate*	10.2	10.2	---	---	---	13.6
95% C.I.	(7.5-14.0)	(7.5-14.0)	---	---	---	(12.9-14.2)
Native American	0	0	0	0	0	175
Rate*	---	---	---	---	---	11.8
95% C.I.	---	---	---	---	---	(10.0-10.0)
Asian	35	31	4	0	0	2,737
Rate*	7.3	7.3	---	---	---	16.5
95% C.I.	(5.0-10.6)	(5.0-10.6)	---	---	---	(15.9-17.2)
Hispanic	59	46	10	3	0	2,096
Rate*	8.6	8.6	8.6	---	---	13.0
95% C.I.	(6.2-12.0)	(6.2-12.0)	(6.2-12.0)	---	---	(12.4-13.6)
Other/Unknown	5	3	1	1	0	43

\* Rates are per 100,000 age-specific population.

Note: The "---" is used for rates calculated on numbers less than ten and SEER numbers less than five. See Technical Notes for more information.



**Table 272. Stomach Cancer Inpatient Discharges by Gender, Charges, Length of Stay, and County/Region of Residence, Nevada Residents, 1999-2003**

Category	County/Region of Residence				
	Nevada Total	Clark	Washoe	All Other Counties	Unknown
<b>Total</b>					
Discharges	578	433	91	54	0
Rate*	5.9	6.4	5.8	3.6	---
95% C.I.	(5.4-6.4)	(5.8-7.1)	(4.6-7.2)	(2.7-4.8)	---
<b>Gender</b>					
Male	395	300	58	37	0
Rate*	8.2	9.2	7.7	4.8	---
95% C.I.	(7.4-9.2)	(8.1-10.4)	(5.7-10.3)	(3.4-6.6)	---
Female	183	133	33	17	0
Rate*	3.7	3.9	4.0	2.3	---
95% C.I.	(3.1-4.2)	(3.2-4.6)	(2.8-5.7)	(1.3-3.7)	---
Other/Unknown	0	0	0	0	0
<b>Inpatient Discharge Charges (\$)</b>					
Total Charges	\$37,284,333	\$28,709,763	\$5,332,067	\$3,242,503	\$0
Average Charges	\$64,506	\$66,304	\$58,594	\$60,046	\$0
Median Charges	\$41,956	\$44,018	\$37,091	\$30,358	\$0
<b>Discharge Length of Stay (LOS) (Days)</b>					
Total LOS	6,559	5,045	976	538	0
Average LOS	11.3	11.7	10.7	10.0	0.0
Median LOS	9.0	9.0	9.0	8.0	0.0

\* Rates are per 100,000 population and are age-adjusted to the 2000 US Standard population.

Note: The "---" is used for rates calculated on numbers less than ten. Caution should be used when comparing inpatient hospital discharge data to other data sources, since it is occurrence-based data. Please See Technical Notes for more information.

**Table 273. Stomach Cancer Mortality by Age Group and County/Region of Residence, Nevada Residents, 1999-2003**

Category	County/Region of Residence			
	Nevada Total	Clark	Washoe	All Other Counties
<b>Total</b>				
Deaths	351	253	55	43
Rate*	3.8	4.0	3.6	2.9
95% C.I.	(3.4-4.2)	(3.5-4.6)	(2.7-4.8)	(2.1-4.0)
<b>Age Group</b>				
<1	0	0	0	0
Rate*	---	---	---	---
95% C.I.	---	---	---	---
1-4	0	0	0	0
Rate*	---	---	---	---
95% C.I.	---	---	---	---
5-14	0	0	0	0
Rate*	---	---	---	---
95% C.I.	---	---	---	---
15-24	2	1	0	1
Rate*	---	---	---	---
95% C.I.	---	---	---	---
25-34	6	6	0	0
Rate*	---	---	---	---
95% C.I.	---	---	---	---
35-44	13	12	1	0
Rate*	0.8	1.0	---	---
95% C.I.	(0.36-1.21)	(0.45-1.63)	---	---
45-54	39	28	6	5
Rate*	2.7	2.9	---	---
95% C.I.	(1.88-3.61)	(1.85-4.03)	---	---
55-64	53	35	9	9
Rate*	5.2	5.0	---	---
95% C.I.	(3.77-6.54)	(3.32-6.61)	---	---
65-74	94	69	18	7
Rate*	13.7	14.6	17.2	---
95% C.I.	(10.90-16.43)	(11.19-18.10)	(9.27-25.20)	---
75-84	106	77	15	14
Rate*	27.0	29.0	24.4	21.4
95% C.I.	(21.88-32.17)	(22.53-35.49)	(12.05-36.74)	(10.20-32.64)
85+	38	25	6	7
Rate*	43.2	45.0	---	---
95% C.I.	(29.46-56.92)	(27.33-62.57)	---	---
Unknown	0	0	0	0

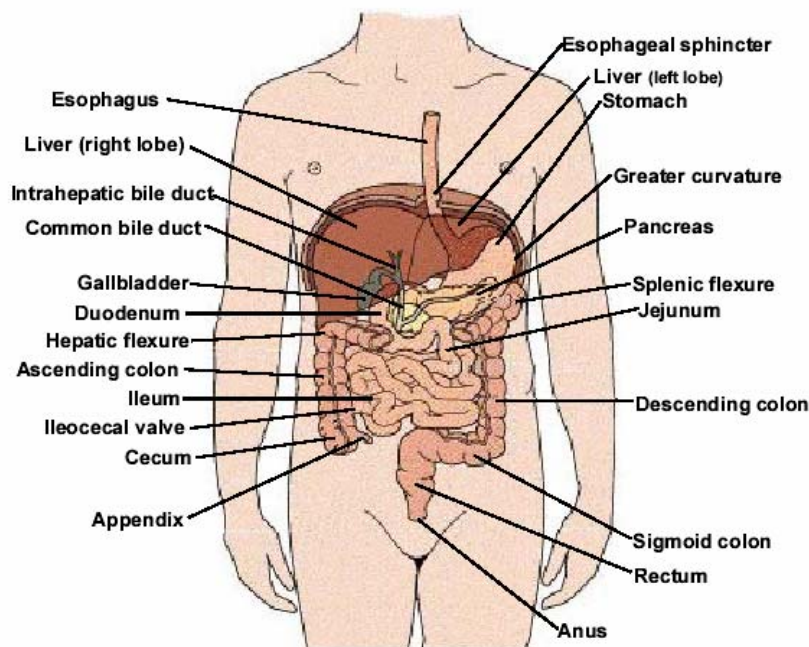
\* Rates are per 100,000 age-specific population.

Note: The "---" is used for rates calculated on numbers less than ten.

# LIVER AND INTRAHEPATIC BILE DUCTS CANCER

## GENERAL PROFILE<sup>4</sup>

Figure 172. Anatomical Drawing of the Digestive System<sup>5</sup>



**General Anatomy:** The liver is the largest organ in the body. It is found behind the ribs on the right side of the abdomen. The liver has two parts, a right lobe and a smaller left lobe. The liver has many important functions that keep a person healthy. It removes harmful material from the blood. It makes enzymes and bile that help digest food. It also converts food into substances needed for life and growth. The liver gets its supply of blood from two vessels. Most of its blood comes from the hepatic portal vein. The rest comes from the hepatic artery.

**Risk Factors:** Chronic liver infection (hepatitis), cirrhosis, Aflatoxin (type of mold), being male, family history, and age (over 60 years of age).

**Signs and Symptoms:** Pain in the upper abdomen on the right side; the pain may extend to the back and shoulder, swollen abdomen (bloating), weight loss, loss of appetite and feelings of fullness, weakness or feeling very tired, nausea and vomiting, yellow skin and eyes and dark urine from jaundice, and fever.

**Diagnosing the Cancer:** Physical exam, blood tests, computed tomography (CAT) scan, ultrasound test, magnetic resonance imaging (MRI), angiogram, and biopsy.

**Treatment:** surgery (Hepatectomy, Transplantation), radio frequency ablation, percutaneous ethanol injection, cryosurgery, hepatic arterial infusion, chemoembolization, chemotherapy, and radiation therapy.

**Table 274. Liver and Intrahepatic Bile Ducts Cancer Cases by Age Group and County/Region of Residence at Diagnosis, Nevada Residents (1999-2003) and SEER-13 (1998-2002)**

Category	County/Region of Residence					
	Nevada Total	Clark	Washoe	All Other Counties	Unknown	SEER 13 (1998-2002)
<b>Total</b>						
Cases	547	390	86	71	0	10,919
Rate*	5.5	5.5	5.5	5.5	---	6.2
95% C.I.	(5.1-6.0)	(5.1-6.0)	(5.1-6.0)	(5.1-6.0)	---	(6.1-6.3)
<b>Gender</b>						
Male	386	386	386	386	0	7,011
Rate*	8.1	8.1	8.1	8.1	---	9.1
95% C.I.	(7.3-9.0)	(7.3-9.0)	(7.3-9.0)	(7.3-9.0)	---	(8.9-9.3)
Female	161	161	161	161	0	3,360
Rate*	3.2	3.2	3.2	3.2	---	3.5
95% C.I.	(2.7-3.8)	(2.7-3.8)	(2.7-3.8)	(2.7-3.8)	---	(3.3-3.6)
Other/Unknown	0	0	0	0	0	0
<b>Race/Ethnicity</b>						
White	397	260	71	66	0	6,731
Rate*	5.0	5.0	5.0	5.0	---	4.8
95% C.I.	(4.5-5.5)	(4.5-5.5)	(4.5-5.5)	(4.5-5.5)	---	(4.7-5.0)
Black	39	38	1	0	0	1,081
Rate*	6.9	6.9	---	---	---	7.2
95% C.I.	(4.8-10.0)	(4.8-10.0)	---	---	---	(6.8-7.7)
Native American	0	0	0	0	0	99
Rate*	---	---	---	---	---	6.4
95% C.I.	---	---	---	---	---	(5.1-5.1)
Asian	60	52	7	1	0	2,448
Rate*	13.0	13.0	---	---	---	13.7
95% C.I.	(9.3-18.6)	(9.3-18.6)	---	---	---	(13.2-14.3)
Hispanic	48	38	7	3	0	1,519
Rate*	6.7	6.7	---	---	---	9.1
95% C.I.	(4.6-9.7)	(4.6-9.7)	---	---	---	(8.6-9.6)
Other/Unknown	3	2	0	1	0	36

\* Rates are per 100,000 age-specific population.

Note: The "---" is used for rates calculated on numbers less than ten and SEER numbers less than five. See Technical Notes for more information.

**Table 275. Liver and Intrahepatic Bile Ducts Cancer Inpatient Discharges by Gender, Charges, Length of Stay, and County/Region of Residence, Nevada Residents, 1999-2003**

Category	County/Region of Residence				
	Nevada Total	Clark	Washoe	All Other Counties	Unknown
<b>Total</b>					
Discharges	368	291	57	20	0
Rate*	3.7	4.2	3.5	1.3	---
95% C.I.	(3.3-4.1)	(3.8-4.8)	(2.7-4.6)	(0.8-2.1)	---
<b>Gender</b>					
Male	245	202	32	11	0
Rate*	4.9	5.9	4.2	1.3	---
95% C.I.	(4.3-5.6)	(5.1-6.9)	(2.8-6.3)	(0.6-2.4)	---
Female	123	89	25	9	0
Rate*	2.5	2.6	3.0	---	---
95% C.I.	(2.1-3.0)	(2.1-3.3)	(1.9-4.4)	---	---
Other/Unknown	0	0	0	0	0
<b>Inpatient Discharge Charges (\$)</b>					
Total Charges	\$10,860,361	\$9,255,081	\$1,103,338	\$501,942	\$0
Average Charges	\$29,512	\$31,804	\$19,357	\$25,097	\$0
Median Charges	\$19,601	\$20,878	\$16,894	\$12,207	\$0
<b>Discharge Length of Stay (LOS) (Days)</b>					
Total LOS	2,370	1,915	335	120	0
Average LOS	6.4	6.6	5.9	6.0	0.0
Median LOS	5.0	5.0	5.0	4.0	0.0

\* Rates are per 100,000 population and are age-adjusted to the 2000 US Standard population.

Note: The "---" is used for rates calculated on numbers less than ten. Caution should be used when comparing inpatient hospital discharge data to other data sources, since it is occurrence-based data. Please See Technical Notes for more information.

**Table 276. Liver and Intrahepatic Bile Ducts Cancer Mortality by Age Group and County/Region of Residence, Nevada Residents, 1999-2003**

Category	County/Region of Residence			
	Nevada Total	Clark	Washoe	All Other Counties
<b>Total</b>				
<b>Deaths</b>	463	326	73	64
<b>Rate*</b>	4.8	5.0	4.7	4.2
<b>95% C.I.</b>	(4.4-5.3)	(4.4-5.6)	(3.7-6.0)	(3.2-5.4)
<b>Age Group</b>				
<1	1	1	0	0
Rate*	---	---	---	---
95% C.I.	---	---	---	---
1-4	1	1	0	0
Rate*	---	---	---	---
95% C.I.	---	---	---	---
5-14	1	1	0	0
Rate*	---	---	---	---
95% C.I.	---	---	---	---
15-24	4	3	0	1
Rate*	---	---	---	---
95% C.I.	---	---	---	---
25-34	3	2	0	1
Rate*	---	---	---	---
95% C.I.	---	---	---	---
35-44	15	13	0	2
Rate*	0.9	1.1	---	---
95% C.I.	(0.45-1.36)	(0.52-1.75)	---	---
45-54	71	55	13	3
Rate*	5.0	5.8	5.1	---
95% C.I.	(3.83-6.16)	(4.25-7.30)	(2.34-7.93)	---
55-64	84	63	8	13
Rate*	8.2	8.9	---	8.2
95% C.I.	(6.42-9.91)	(6.73-11.14)	---	(3.74-12.64)
65-74	140	92	30	18
Rate*	20.4	19.5	28.7	16.1
95% C.I.	(16.98-23.73)	(15.53-23.51)	(18.45-39.00)	(8.63-23.46)
75-84	112	73	18	21
Rate*	28.6	27.5	29.3	32.1
95% C.I.	(23.27-33.84)	(21.20-33.82)	(15.75-42.80)	(18.39-45.87)
85+	31	22	4	5
Rate*	35.2	39.6	---	---
95% C.I.	(22.83-47.64)	(23.03-56.08)	---	---
Unknown	0	0	0	0

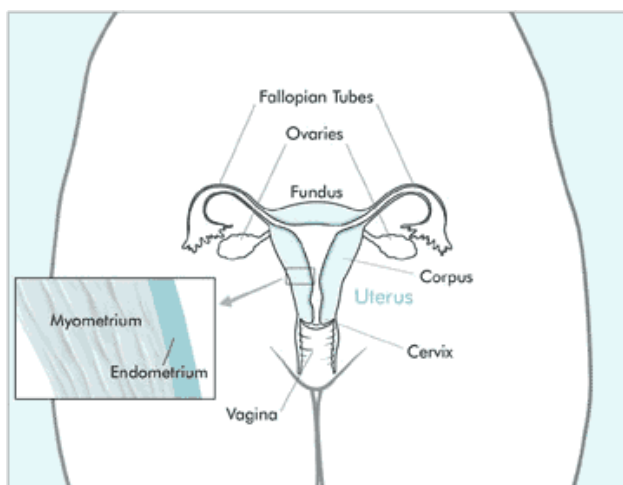
\* Rates are per 100,000 age-specific population.

Note: The "---" is used for rates calculated on numbers less than ten.

## CERVICAL CANCER

### GENERAL PROFILE<sup>4</sup>

**Figure 173. Anatomical Drawing of the Female Reproductive System<sup>4</sup>**



**General Anatomy:** The cervix is the lower, narrow part of the uterus (womb). The uterus, a hollow, pear-shaped organ, is located in a woman's lower abdomen, between the bladder and the rectum. The cervix forms a canal that opens into the vagina, which leads to the outside of the body. Cells on the surface of the cervix sometimes appear abnormal but not cancerous. Scientists believe that some abnormal changes in cells on the cervix are the first step in a series of slow changes that can lead to cancer years later. If these changes form abnormal cells that spread deeper into the cervix or to other tissues or organs, the disease is then called cervical cancer, or invasive cervical cancer.

**Risk Factors:** Researchers believe that, in many cases, cervical cancer develops when two or more risk factors act together. These include: women who began having sexual intercourse before age 18, women who have had many sexual partners, women whose partners began having sexual intercourse at a young age, have had many sexual partners, or were previously married to women who had cervical cancer, some sexually transmitted human papillomaviruses (HPVs), smoking, women whose mothers were given the drug diethylstilbestrol (DES) during pregnancy to prevent miscarriage, weakened immune systems, and the use of oral contraceptives (the pill).

**Signs and Symptoms:** Precancerous changes of the cervix usually do not cause pain. In fact, they generally do not cause any symptoms until abnormal cervical cells become cancerous and invade nearby tissue, unless a woman has a pelvic exam and a Pap test. Symptoms include: abnormal bleeding (longer and heavier than usual), bleeding after menopause, and increased vaginal discharge is another symptom of cervical cancer.

**Diagnosing the Cancer:** Pap Smear tests (Early Detection), colposcopy, endocervical curettage, conization, dilation and curettage,

**Treatment:** Surgery (Hysterectomy), cryosurgery, cauterization, laser surgery, conization, radiation therapy, and chemotherapy.

**Table 277. Cervical Cancer Screening by County/Region of Residence, Education, Age Group, and Income, Nevada Residents, 1999, 2000 and 2002**

Responses	Answers						Total
	Yes			No			
	Number	Percent*	95% C.I.	Number	Percent*	95% C.I.	
Total							
Responses	3,565	94.8%	(93.7-96.0)	152	5.2%	(4.0-6.3)	3,717
County/Region of Residence							
Clark County	1,163	95.2%	(93.8-96.7)	47	4.8%	(3.3-6.2)	1,210
Washoe County	1,144	96.0%	(94.6-97.3)	44	4.0%	(2.7-5.4)	1,188
All Other Counties	1,258	92.1%	(88.7-95.5)	61	7.9%	(4.5-11.3)	1,319
Education							
Less than High School	367	91.1%	(86.8-95.5)	29	8.9%	(4.5-13.2)	396
High School	1,125	93.5%	(91.4-95.7)	60	6.5%	(4.3-8.6)	1,185
Some Post High School	1,202	95.9%	(94.2-97.6)	45	4.1%	(2.4-5.8)	1,247
College Graduate	864	97.4%	(95.4-99.3)	18	2.6%	(0.7-4.6)	882
Age Group							
18-24 years old	282	78.1%	(71.7-84.5)	62	21.9%	(15.5-28.3)	344
25-34 years old	632	94.6%	(92.0-97.3)	24	5.4%	(2.7-8.0)	656
35-44 years old	820	97.9%	(96.6-99.2)	14	2.1%	(0.8-3.4)	834
45-54 years old	694	99.1%	(98.2-100.0)	11	0.9%	(0.0-1.8)	705
55-64 years old	461	98.6%	(97.0-100.0)	7	1.4%	(0.0-3.0)	468
65+ years old	667	94.6%	(91.6-97.6)	34	5.4%	(2.4-8.4)	701
Income							
Less than \$15,000	314	87.9%	(81.2-94.5)	28	12.1%	(5.5-18.8)	342
\$15,000-\$24,999	607	93.3%	(90.4-96.3)	36	6.7%	(3.7-9.6)	643
\$25,000-\$34,999	503	94.9%	(92.0-97.7)	24	5.1%	(2.3-8.0)	527
\$35,000-\$49,999	649	96.1%	(93.9-98.3)	19	3.9%	(1.7-6.1)	668
\$50,000 or More	1,057	98.4%	(97.1-99.7)	12	1.6%	(0.3-2.9)	1,069

\*Denominator is persons age 18-65+ and excludes missing, don't know, and refused responses.

Note: This table includes those respondents who answered "Yes" or "No" to the following question:

- 1) A Pap smear is a test for cancer of the cervix. Have you ever had a Pap smear?



**Table 278. Cervical Cancer Cases by Age Group and County/Region of Residence at Diagnosis, Nevada Residents (1999-2003) and SEER-13 (1998-2002)**

Category	County/Region of Residence					
	Nevada Total	Clark	Washoe	All Other Counties	Unknown	SEER 13 (1998-2002)
<b>Total</b>						
Cases	516	385	80	51	0	8,815
Rate*	5.0	5.0	5.0	5.0	---	4.7
95% C.I.	(4.5-5.4)	(4.5-5.4)	(4.5-5.4)	(4.5-5.4)	---	(4.6-4.8)
<b>Gender</b>						
Male	---	---	---	---	---	---
Rate*	---	---	---	---	---	---
95% C.I.	---	---	---	---	---	---
Female	516	516	516	516	0	8,968
Rate*	9.9	9.9	9.9	9.9	---	9.3
95% C.I.	(9.1-10.8)	(9.1-10.8)	(9.1-10.8)	(9.1-10.8)	---	(9.1-9.5)
Other/Unknown	0	0	0	0	0	0
<b>Race/Ethnicity</b>						
White	381	273	63	45	0	6,659
Rate*	10.1	10.1	10.1	10.1	---	8.9
95% C.I.	(9.1-11.2)	(9.1-11.2)	(9.1-11.2)	(9.1-11.2)	---	(8.7-9.1)
Black	33	31	2	0	0	1,143
Rate*	10.7	10.7	---	---	---	11.9
95% C.I.	(7.3-15.6)	(7.3-15.6)	---	---	---	(11.2-12.6)
Native American	1	1	0	0	0	68
Rate*	---	---	---	---	---	6.0
95% C.I.	---	---	---	---	---	(4.6-7.8)
Asian	35	31	2	2	0	1,009
Rate*	11.0	11.0	---	---	---	9.5
95% C.I.	(7.1-18.5)	(7.1-18.5)	---	---	---	(9.0-10.2)
Hispanic	57	42	11	4	0	2,085
Rate*	10.1	10.1	10.1	---	---	15.8
95% C.I.	(7.4-13.7)	(7.4-13.7)	(7.4-13.7)	---	---	(15.1-16.6)
Other/Unknown	9	7	2	0	0	104

\* Rates are per 100,000 age-specific female population.

Note: The "---" is used for rates calculated on numbers less than ten and SEER numbers less than five. See Technical Notes for more information.

**Table 279. Cervical Cancer Inpatient Discharges by Gender, Charges, Length of Stay, and County/Region of Residence, Nevada Residents, 1999-2003**

Category	County/Region of Residence				
	Nevada Total	Clark	Washoe	All Other Counties	Unknown
<b>Total</b>					
Discharges	624	439	97	88	0
Rate*	5.9	6.0	5.5	5.8	---
95% C.I.	(5.5-6.4)	(5.5-6.6)	(4.5-6.8)	(4.6-7.2)	---
<b>Gender</b>					
Male	---	---	---	---	---
Rate*	---	---	---	---	---
95% C.I.	---	---	---	---	---
Female	624	439	97	88	0
Rate*	11.9	12.2	11.0	11.6	---
95% C.I.	(11.0-12.9)	(11.1-13.4)	(8.9-13.5)	(9.3-14.4)	---
Other/Unknown	0	0	0	0	0
<b>Inpatient Discharge Charges (\$)</b>					
Total Charges	\$18,667,789	\$12,760,472	\$3,345,379	\$2,561,938	\$0
Average Charges	\$29,916	\$29,067	\$34,488	\$29,113	\$0
Median Charges	\$21,730	\$21,677	\$26,028	\$16,919	\$0
<b>Discharge Length of Stay (LOS) (Days)</b>					
Total LOS	3,072	2,178	456	438	0
Average LOS	4.9	5.0	4.7	5.0	0.0
Median LOS	3.0	4.0	3.0	3.0	0.0

\* Rates are per 100,000 population and are age-adjusted to the 2000 US Standard population.

Note: The "---" is used for rates calculated on numbers less than ten. Caution should be used when comparing inpatient hospital discharge data to other data sources, since it is occurrence-based data. Please See Technical Notes for more information.

**Table 280. Cervical Cancer Mortality by Age Group and County/Region of Residence, Nevada Residents, 1999-2003**

Category	County/Region of Residence			
	Nevada Total	Clark	Washoe	All Other Counties
<b>Total</b>				
Deaths	139	106	18	15
Rate*	2.7	3.0	2.1	1.9
95% C.I.	(2.3-3.2)	(2.5-3.7)	(1.2-3.3)	(1.0-3.1)
<b>Age Group</b>				
<1	0	0	0	0
Rate*	---	---	---	---
95% C.I.	---	---	---	---
1-4	0	0	0	0
Rate*	---	---	---	---
95% C.I.	---	---	---	---
5-14	0	0	0	0
Rate*	---	---	---	---
95% C.I.	---	---	---	---
15-24	0	0	0	0
Rate*	---	---	---	---
95% C.I.	---	---	---	---
25-34	5	4	1	0
Rate*	---	---	---	---
95% C.I.	---	---	---	---
35-44	22	18	2	2
Rate*	2.8	3.3	---	---
95% C.I.	(1.61-3.92)	(1.77-4.81)	---	---
45-54	40	30	5	5
Rate*	5.7	6.4	---	---
95% C.I.	(3.94-7.48)	(4.10-8.67)	---	---
55-64	27	19	5	3
Rate*	5.2	5.3	---	---
95% C.I.	(3.23-7.14)	(2.89-7.63)	---	---
65-74	23	15	4	4
Rate*	6.6	6.3	---	---
95% C.I.	(3.90-9.30)	(3.10-9.45)	---	---
75-84	15	14	0	1
Rate*	7.0	9.7	---	---
95% C.I.	(3.45-10.51)	(4.60-14.73)	---	---
85+	7	6	1	0
Rate*	---	---	---	---
95% C.I.	---	---	---	---
Unknown	0	0	0	0

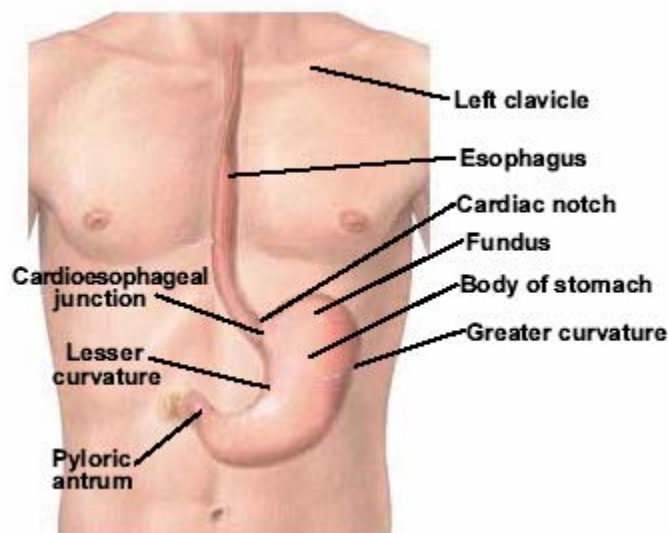
\* Rates are per 100,000 age-specific female population.

Note: The "---" is used for rates calculated on numbers less than ten.

## ESOPHAGEAL CANCER

### GENERAL PROFILE<sup>4</sup>

**Figure 174. Anatomical Drawing of the Esophagus and Stomach**<sup>5</sup>



**General Anatomy:** The esophagus is a hollow tube that carries food and liquids from the throat to the stomach. When a person swallows, the muscular walls of the esophagus contract to push food down into the stomach. Glands in the lining of the esophagus produce mucus, which keeps the passageway moist and makes swallowing easier. The esophagus is located just behind the trachea (windpipe). In an adult, the esophagus is about 10 inches long.

**Risk Factors:** Age, (over 60 years of age), being male, tobacco use, chronic and/or heavy alcohol use, Barrett's Esophagus (Long-term irritation from gastric reflux), medical history, and other types of irritation that cause significant irritation or damage to the lining of the esophagus (swallowing lye or other caustic substances) can increase the risk of developing esophageal cancer.

**Signs and Symptoms:** Difficult or painful swallowing, severe weight loss, pain in the throat or back, behind the breastbone or between the shoulder blades, hoarseness or chronic cough, vomiting, and coughing up blood are some common symptoms of Esophageal Cancer.

**Diagnosing the Cancer:** Barium swallow x-rays (also called an Esophagram), biopsy procedures (Esophagoscopy/Endoscopy), computed tomography (CAT) scan, bone scan, and bronchoscopy are common ways of diagnosing this type of cancer.

**Treatment:** Surgery (Esophagectomy), radiation therapy, chemotherapy, laser therapy, and photodynamic therapy (PDT).

**Table 281. Esophageal Cancer Cases by Age Group and County/Region of Residence at Diagnosis, Nevada Residents (1999-2003) and SEER-13 (1998-2002)**

Category	County/Region of Residence					
	Nevada Total	Clark	Washoe	All Other Counties	Unknown	SEER 13 (1998-2002)
Total						
Cases	522	354	83	85	0	7,891
Rate*	5.2	5.2	5.2	5.2	---	4.5
95% C.I.	(4.8-5.7)	(4.8-5.7)	(4.8-5.7)	(4.8-5.7)	---	(4.4-4.6)
Gender						
Male	402	402	402	402	0	5,759
Rate*	8.4	8.4	8.4	8.4	---	7.7
95% C.I.	(7.6-9.3)	(7.6-9.3)	(7.6-9.3)	(7.6-9.3)	---	(7.5-7.9)
Female	120	120	120	120	0	1,989
Rate*	2.3	2.3	2.3	2.3	---	2.0
95% C.I.	(1.9-2.8)	(1.9-2.8)	(1.9-2.8)	(1.9-2.8)	---	(2.0-2.1)
Other/Unknown	0	0	0	0	0	0
Race/Ethnicity						
White	465	305	77	83	0	6,244
Rate*	5.6	5.6	5.6	5.6	---	4.5
95% C.I.	(5.1-6.2)	(5.1-6.2)	(5.1-6.2)	(5.1-6.2)	---	(4.4-4.6)
Black	30	25	4	1	0	967
Rate*	6.1	6.1	---	---	---	6.7
95% C.I.	(4.0-9.3)	(4.0-9.3)	---	---	---	(6.2-7.1)
Native American	0	0	0	0	0	45
Rate*	---	---	---	---	---	3.2
95% C.I.	---	---	---	---	---	(2.3-2.3)
Asian	10	9	1	0	0	495
Rate*	1.9	---	---	---	---	2.9
95% C.I.	(0.9-3.8)	---	---	---	---	(2.6-3.2)
Hispanic	16	14	1	1	0	494
Rate*	2.4	2.4	---	---	---	3.2
95% C.I.	(1.2-4.8)	(1.2-4.8)	---	---	---	(2.9-3.5)
Other/Unknown	1	1	0	0	0	21

\* Rates are per 100,000 age-specific population.

Note: The "---" is used for rates calculated on numbers less than ten and SEER numbers less than five. See Technical Notes for more information.

**Table 282. Esophageal Cancer Inpatient Discharges by Gender, Charges, Length of Stay, and County/Region of Residence, Nevada Residents, 1999-2003**

Category	County/Region of Residence				
	Nevada Total	Clark	Washoe	All Other Counties	Unknown
<b>Total</b>					
Discharges	302	218	40	44	0
Rate*	3.0	3.2	2.5	2.7	---
95% C.I.	(2.7-3.4)	(2.8-3.7)	(1.8-3.5)	(2.0-3.7)	---
<b>Gender</b>					
Male	232	165	33	34	0
Rate*	4.8	5.1	4.5	4.2	---
95% C.I.	(4.2-5.6)	(4.3-6.0)	(3.1-6.7)	(2.9-6.2)	---
Female	70	53	7	10	0
Rate*	1.4	1.5	---	1.2	---
95% C.I.	(1.1-1.7)	(1.1-2.0)	---	(0.6-2.3)	---
Other/Unknown	0	0	0	0	0
<b>Inpatient Discharge Charges (\$)</b>					
Total Charges	\$15,716,160	\$11,870,477	\$1,649,131	\$2,196,552	\$0
Average Charges	\$52,040	\$54,452	\$41,228	\$49,922	\$0
Median Charges	\$26,542	\$28,549	\$25,997	\$17,799	\$0
<b>Discharge Length of Stay (LOS) (Days)</b>					
Total LOS	2,841	2,161	302	378	0
Average LOS	9.4	9.9	7.6	8.6	0.0
Median LOS	7.0	7.0	6.5	5.5	0.0

\* Rates are per 100,000 population and are age-adjusted to the 2000 US Standard population.

Note: The "---" is used for rates calculated on numbers less than ten. Caution should be used when comparing inpatient hospital discharge data to other data sources, since it is occurrence-based data. Please See Technical Notes for more information.

**Table 283. Esophageal Cancer Mortality by Age Group and County/Region of Residence, Nevada Residents, 1999-2003**

Category	County/Region of Residence			
	Nevada Total	Clark	Washoe	All Other Counties
<b>Total</b>				
Deaths	449	320	58	71
Rate*	4.5	4.7	3.6	4.5
95% C.I.	(4.1-5.0)	(4.2-5.3)	(2.8-4.8)	(3.5-5.7)
<b>Age Group</b>				
<1	0	0	0	0
Rate*	---	---	---	---
95% C.I.	---	---	---	---
1-4	0	0	0	0
Rate*	---	---	---	---
95% C.I.	---	---	---	---
5-14	0	0	0	0
Rate*	---	---	---	---
95% C.I.	---	---	---	---
15-24	0	0	0	0
Rate*	---	---	---	---
95% C.I.	---	---	---	---
25-34	0	0	0	0
Rate*	---	---	---	---
95% C.I.	---	---	---	---
35-44	12	10	1	1
Rate*	0.7	0.9	---	---
95% C.I.	(0.31-1.14)	(0.33-1.41)	---	---
45-54	40	30	3	7
Rate*	2.8	3.2	---	---
95% C.I.	(1.94-3.69)	(2.02-4.28)	---	---
55-64	130	97	16	17
Rate*	12.6	13.8	9.7	10.7
95% C.I.	(10.47-14.81)	(11.02-16.49)	(4.96-14.50)	(5.62-15.80)
65-74	136	88	24	24
Rate*	19.8	18.7	23.0	21.4
95% C.I.	(16.45-23.10)	(14.77-22.58)	(13.79-32.17)	(12.84-29.96)
75-84	113	82	12	19
Rate*	28.8	30.9	19.5	29.1
95% C.I.	(23.50-34.12)	(24.21-37.59)	(8.47-30.56)	(16.00-42.14)
85+	18	13	2	3
Rate*	20.5	23.4	---	---
95% C.I.	(11.01-29.91)	(10.67-36.08)	---	---
Unknown	0	0	0	0

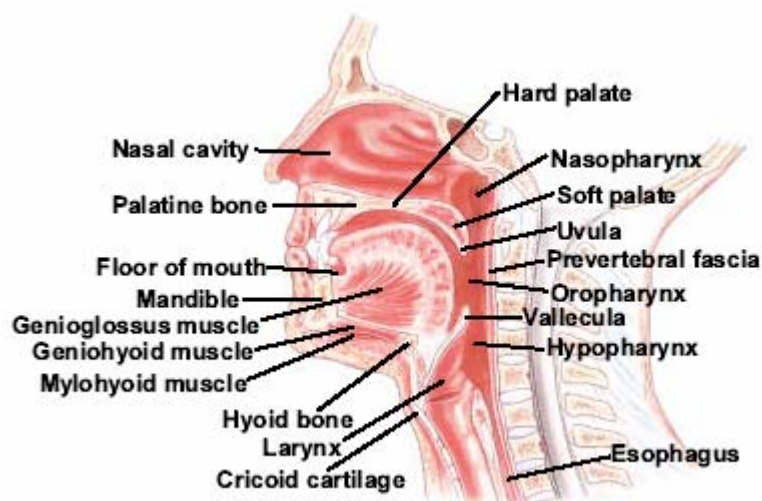
\* Rates are per 100,000 age-specific population.

Note: The "---" is used for rates calculated on numbers less than ten.

## LARYNX CANCER

### GENERAL PROFILE<sup>4</sup>

**Figure 175. Anatomy of the Oral Cavity<sup>5</sup>**



**General Anatomy:** The larynx, also called the voice box, is a 2-inch-long, tube-shaped organ made of cartilage in the neck. We use the larynx when we breathe, talk, or swallow. The larynx is at the top of the windpipe (trachea). The large cartilage that forms the front of the larynx is sometimes called the Adam's apple. The vocal cords, two bands of muscle, form a "V" inside the larynx.

**Risk Factors:** Cancer of the larynx occurs most often in people over the age of 55, men, Blacks as a racial/ethnic group, smokers, and those who work with asbestos.

**Signs and Symptoms:** The symptoms of cancer of the larynx depend mainly on the size and location of the tumor. Most cancers of the larynx begin on the vocal cords. These tumors are seldom painful, but they almost always cause hoarseness or other changes in the voice. Tumors in the area above the vocal cords may cause a lump on the neck, a sore throat, or an earache. Tumors that begin in the area below the vocal cords are rare. They can make it hard to breathe, and breathing may be noisy.

A cough that doesn't go away or the feeling of a lump in the throat may also be warning signs of cancer of the larynx. As the tumor grows, it may cause pain, weight loss, bad breath, and frequent choking on food. In some cases, a tumor in the larynx can make it hard to swallow.

**Diagnosing the Cancer:** Direct and indirect laryngoscopy, computed tomography (CAT) scan, and magnetic resonance imaging (MRI) are some common ways of diagnosing cancer of the larynx.

**Treatment:** Radiation therapy, surgery (Partial or Total Laryngectomy), and chemotherapy are the most common treatment options for those diagnosed with Larynx Cancer.



**Table 284. Larynx Cancer Cases by Age Group and County/Region of Residence at Diagnosis, Nevada Residents (1999-2003) and SEER-13 (1998-2002)**

Category	County/Region of Residence					
	Nevada Total	Clark	Washoe	All Other Counties	Unknown	SEER 13 (1998-2002)
Total						
Cases	389	264	64	61	0	6,437
Rate*	3.9	3.9	3.9	3.9	---	3.7
95% C.I.	(3.5-4.3)	(3.5-4.3)	(3.5-4.3)	(3.5-4.3)	---	(3.6-3.7)
Gender						
Male	310	310	310	310	0	5,137
Rate*	6.4	6.4	6.4	6.4	---	6.7
95% C.I.	(5.7-7.2)	(5.7-7.2)	(5.7-7.2)	(5.7-7.2)	---	(6.5-6.9)
Female	79	79	79	79	0	1,367
Rate*	1.6	1.6	1.6	1.6	---	1.5
95% C.I.	(1.2-1.9)	(1.2-1.9)	(1.2-1.9)	(1.2-1.9)	---	(1.4-1.5)
Other/Unknown	0	0	0	0	0	0
Race/Ethnicity						
White	356	235	61	60	0	5,203
Rate*	4.3	4.3	4.3	4.3	---	3.8
95% C.I.	(3.9-4.8)	(3.9-4.8)	(3.9-4.8)	(3.9-4.8)	---	(3.7-3.9)
Black	16	14	2	0	0	961
Rate*	3.1	3.1	---	---	---	6.5
95% C.I.	(1.7-5.2)	(1.7-5.2)	---	---	---	(6.0-6.9)
Native American	1	1	0	0	0	16
Rate*	---	---	---	---	---	0.9
95% C.I.	---	---	---	---	---	(0.5-0.5)
Asian	2	2	0	0	0	301
Rate*	---	---	---	---	---	1.8
95% C.I.	---	---	---	---	---	(1.6-2.0)
Hispanic	10	9	0	1	0	474
Rate*	1.4	---	---	---	---	2.8
95% C.I.	(0.6-2.8)	---	---	---	---	(2.6-3.1)
Other/Unknown	4	3	1	0	0	29

\* Rates are per 100,000 age-specific population.

Note: The "---" is used for rates calculated on numbers less than ten and SEER numbers less than five. See Technical Notes for more information.

**Table 285. Larynx Cancer Inpatient Discharges by Gender, Charges, Length of Stay, and County/Region of Residence, Nevada Residents, 1999-2003**

Category	County/Region of Residence				
	Nevada Total	Clark	Washoe	All Other Counties	Unknown
<b>Total</b>					
Discharges	182	128	25	29	0
Rate*	1.8	1.9	1.5	1.8	---
95% C.I.	(1.5-2.1)	(1.6-2.3)	(1.0-2.3)	(1.2-2.6)	---
<b>Gender</b>					
Male	141	104	14	23	0
Rate*	2.9	3.3	1.7	2.8	---
95% C.I.	(2.4-3.5)	(2.6-4.1)	(0.9-2.9)	(1.8-4.2)	---
Female	41	24	11	6	0
Rate*	0.8	0.7	1.3	---	---
95% C.I.	(0.6-1.1)	(0.4-1.0)	(0.7-2.4)	---	---
Other/Unknown	0	0	0	0	0
<b>Inpatient Discharge Charges (\$)</b>					
Total Charges	\$9,668,616	\$7,101,922	\$1,075,430	\$1,491,264	\$0
Average Charges	\$53,124	\$55,484	\$43,017	\$51,423	\$0
Median Charges	\$37,195	\$38,198	\$33,599	\$36,802	\$0
<b>Discharge Length of Stay (LOS) (Days)</b>					
Total LOS	1,902	1,378	211	313	0
Average LOS	10.5	10.8	8.4	10.8	0.0
Median LOS	8.0	8.0	8.0	8.0	0.0

\* Rates are per 100,000 population and are age-adjusted to the 2000 US Standard population.

Note: The "---" is used for rates calculated on numbers less than ten. Caution should be used when comparing inpatient hospital discharge data to other data sources, since it is occurrence-based data. Please See Technical Notes for more information.

**Table 286. Larynx Cancer Mortality by Age Group and County/Region of Residence, Nevada Residents, 1999-2003**

Category	County/Region of Residence			
	Nevada Total	Clark	Washoe	All Other Counties
<b>Total</b>				
Deaths	112	77	17	18
Rate*	1.2	1.1	1.1	1.2
95% C.I.	(0.9-1.4)	(0.9-1.4)	(0.6-1.8)	(0.7-2.0)
<b>Age Group</b>				
<1	0	0	0	0
Rate*	---	---	---	---
95% C.I.	---	---	---	---
1-4	0	0	0	0
Rate*	---	---	---	---
95% C.I.	---	---	---	---
5-14	0	0	0	0
Rate*	---	---	---	---
95% C.I.	---	---	---	---
15-24	0	0	0	0
Rate*	---	---	---	---
95% C.I.	---	---	---	---
25-34	0	0	0	0
Rate*	---	---	---	---
95% C.I.	---	---	---	---
35-44	2	2	0	0
Rate*	---	---	---	---
95% C.I.	---	---	---	---
45-54	7	5	1	1
Rate*	---	---	---	---
95% C.I.	---	---	---	---
55-64	40	28	8	4
Rate*	3.9	4.0	---	---
95% C.I.	(2.68-5.09)	(2.50-5.44)	---	---
65-74	28	21	1	6
Rate*	4.1	4.5	---	---
95% C.I.	(2.56-5.58)	(2.55-6.36)	---	---
75-84	25	17	4	4
Rate*	6.4	6.4	---	---
95% C.I.	(3.88-8.87)	(3.36-9.45)	---	---
85+	10	4	3	3
Rate*	11.4	---	---	---
95% C.I.	(4.32-18.41)	---	---	---
Unknown	0	0	0	0

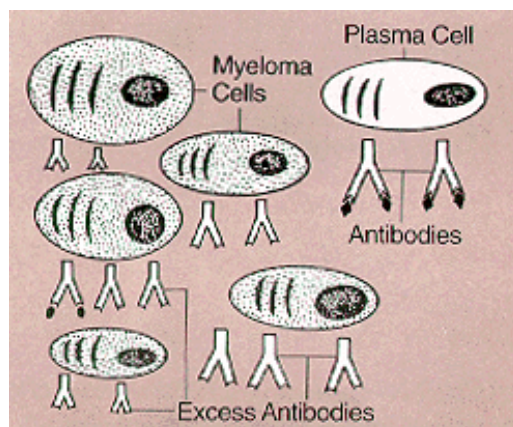
\* Rates are per 100,000 age-specific population.

Note: The "---" is used for rates calculated on numbers less than ten.

## MULTIPLE MYELOMA

### GENERAL PROFILE<sup>4</sup>

Figure 176. Picture of Myeloma Cells<sup>4</sup>



**General Anatomy:** Multiple Myeloma affects certain white blood cells called plasma cells that are part of the body's immune system. Plasma cells begin their development in the bone marrow and help the immune system fight infection and disease by producing antibodies. When cancer involves plasma cells, the body keeps producing more and more of these cells. The unneeded plasma cells -- all abnormal and all exactly alike -- are called myeloma cells. Myeloma cells tend to collect in the bone marrow and in the hard, outer part of bones. Sometimes they collect in only one bone and form a single mass, or tumor, called a plasmacytoma. In most cases, however, the myeloma cells collect in many bones, often forming many tumors and causing other problems. When this happens, the disease is called multiple myeloma.

**Risk Factors:** While the cause is unknown most multiple myeloma patients are between 50 and 70 years of age and affects Blacks, as a racial/ethnic group, more often than whites and men more often than women. Those with a family history of multiple myeloma and those exposed to certain chemicals and radiation seem to have a slightly higher increase in the risk of developing this type of cancer. In most cases, people who develop multiple myeloma have no clear risk factors. The disease may be the result of several factors (known and/or unknown) acting together.

**Signs and Symptoms:** Symptoms of multiple myeloma depend on how advanced the disease is. In the earliest stage of the disease, there may be no symptoms. When symptoms do occur, patients commonly have: bone pain in the back or ribs, broken bones, weakness, fatigue, weight loss, or repeated infections. When the disease is advanced, symptoms may include nausea, vomiting, constipation, problems with urination, and weakness or numbness in the legs.

**Diagnosing the Cancer:** X-rays, blood and urine tests (high levels of antibody proteins), bone marrow aspiration and/or bone marrow biopsy.

**Treatment:** chemotherapy, radiation therapy, and secondary surgical procedures to help the individual recover from these types of therapy include: bone marrow transplantation, peripheral stem cell support, and treatment with colony-stimulating factors.

**Table 287. Multiple Myeloma Cases by Age Group and County/Region of Residence at Diagnosis, Nevada Residents (1999-2003) and SEER-13 (1998-2002)**

Category	County/Region of Residence					
	Nevada Total	Clark	Washoe	All Other Counties	Unknown	SEER 13 (1998-2002)
<b>Total</b>						
Cases	443	283	95	65	0	9,694
Rate*	4.6	4.6	4.6	4.6	---	5.6
95% C.I.	(4.2-5.0)	(4.2-5.0)	(4.2-5.0)	(4.2-5.0)	---	(5.4-5.7)
<b>Gender</b>						
Male	258	258	258	258	0	5,066
Rate*	5.7	5.7	5.7	5.7	---	6.9
95% C.I.	(5.0-6.6)	(5.0-6.6)	(5.0-6.6)	(5.0-6.6)	---	(6.7-7.1)
Female	185	185	185	185	0	4,463
Rate*	3.6	3.6	3.6	3.6	---	4.6
95% C.I.	(3.1-4.2)	(3.1-4.2)	(3.1-4.2)	(3.1-4.2)	---	(4.5-4.7)
Other/Unknown	0	0	0	0	0	0
<b>Race/Ethnicity</b>						
White	360	213	85	62	0	7,287
Rate*	4.5	4.5	4.5	4.5	---	5.2
95% C.I.	(4.1-5.0)	(4.1-5.0)	(4.1-5.0)	(4.1-5.0)	---	(5.1-5.4)
Black	42	40	2	0	0	1,536
Rate*	8.7	8.7	---	---	---	11.0
95% C.I.	(6.2-12.3)	(6.2-12.3)	---	---	---	(10.5-11.6)
Native American	1	0	0	1	0	48
Rate*	---	---	---	---	---	3.2
95% C.I.	---	---	---	---	---	(2.3-2.3)
Asian	12	8	4	0	0	589
Rate*	3.3	---	---	---	---	3.5
95% C.I.	(1.4-7.7)	---	---	---	---	(3.2-3.8)
Hispanic	21	16	4	1	0	815
Rate*	2.8	2.8	---	---	---	5.0
95% C.I.	(1.6-4.6)	(1.6-4.6)	---	---	---	(4.6-5.4)
Other/Unknown	7	6	0	1	0	79

\* Rates are per 100,000 age-specific population.

Note: The "---" is used for rates calculated on numbers less than ten and SEER numbers less than five. See Technical Notes for more information.

**Table 288. Multiple Myeloma Inpatient Discharges by Gender, Charges, Length of Stay, and County/Region of Residence, Nevada Residents, 1999-2003**

Category	County/Region of Residence				
	Nevada Total	Clark	Washoe	All Other Counties	Unknown
<b>Total</b>					
Discharges	346	232	81	33	0
Rate*	3.5	3.5	5.0	2.0	---
95% C.I.	(3.1-3.9)	(3.0-4.0)	(3.9-6.2)	(1.4-2.9)	---
<b>Gender</b>					
Male	200	132	47	21	0
Rate*	4.3	4.3	6.1	2.6	---
95% C.I.	(3.7-5.0)	(3.6-5.3)	(4.4-8.5)	(1.6-4.0)	---
Female	146	100	34	12	0
Rate*	2.8	2.9	4.0	1.4	---
95% C.I.	(2.4-3.3)	(2.3-3.5)	(2.8-5.7)	(0.7-2.6)	---
Other/Unknown	0	0	0	0	0
<b>Inpatient Discharge Charges (\$)</b>					
Total Charges	\$17,398,605	\$12,951,910	\$3,351,552	\$1,095,143	\$0
Average Charges	\$50,285	\$55,827	\$41,377	\$33,186	\$0
Median Charges	\$28,587	\$31,223	\$24,889	\$27,264	\$0
<b>Discharge Length of Stay (LOS) (Days)</b>					
Total LOS	3,388	2,281	855	252	0
Average LOS	9.8	9.8	10.6	7.6	0.0
Median LOS	7.0	7.0	8.0	7.0	0.0

\* Rates are per 100,000 population and are age-adjusted to the 2000 US Standard population.

Note: The "---" is used for rates calculated on numbers less than ten. Caution should be used when comparing inpatient hospital discharge data to other data sources, since it is occurrence-based data. Please See Technical Notes for more information.

**Table 289. Multiple Myeloma Mortality by Age Group and County/Region of Residence, Nevada Residents, 1999-2003**

Category	County/Region of Residence			
	Nevada Total	Clark	Washoe	All Other Counties
<b>Total</b>				
Deaths	313	206	69	38
Rate*	3.3	3.3	4.5	2.4
95% C.I.	(3.0-3.7)	(2.9-3.8)	(3.5-5.8)	(1.7-3.4)
<b>Age Group</b>				
<1	0	0	0	0
Rate*	---	---	---	---
95% C.I.	---	---	---	---
1-4	0	0	0	0
Rate*	---	---	---	---
95% C.I.	---	---	---	---
5-14	0	0	0	0
Rate*	---	---	---	---
95% C.I.	---	---	---	---
15-24	0	0	0	0
Rate*	---	---	---	---
95% C.I.	---	---	---	---
25-34	0	0	0	0
Rate*	---	---	---	---
95% C.I.	---	---	---	---
35-44	3	3	0	0
Rate*	---	---	---	---
95% C.I.	---	---	---	---
45-54	27	21	4	2
Rate*	1.9	2.2	---	---
95% C.I.	(1.18-2.62)	(1.26-3.15)	---	---
55-64	70	43	14	13
Rate*	6.8	6.1	8.5	8.2
95% C.I.	(5.21-8.40)	(4.27-7.92)	(4.06-12.98)	(3.74-12.64)
65-74	86	50	25	11
Rate*	12.5	10.6	23.9	9.8
95% C.I.	(9.86-15.15)	(7.67-13.55)	(14.55-33.32)	(4.01-15.60)
75-84	98	68	21	9
Rate*	25.0	25.6	34.2	---
95% C.I.	(20.04-29.93)	(19.53-31.71)	(19.55-48.76)	---
85+	29	21	5	3
Rate*	33.0	37.8	---	---
95% C.I.	(20.96-44.96)	(21.61-53.90)	---	---
Unknown	0	0	0	0

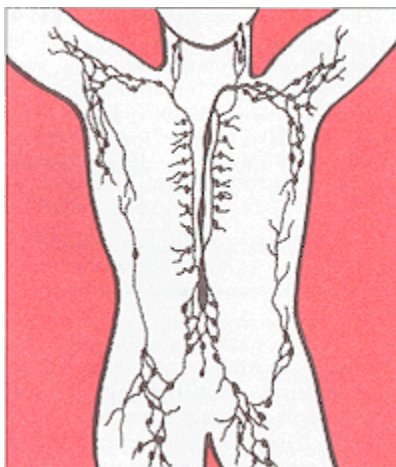
\* Rates are per 100,000 age-specific population.

Note: The "---" is used for rates calculated on numbers less than ten.

## HODGKIN'S LYMPHOMA

### GENERAL PROFILE<sup>4</sup>

**Figure 177. Anatomy of the Lymphatic System<sup>4</sup>**



**General Anatomy:** Lymphoma is a general term for cancers that develop in the lymphatic system. The lymphatic system is part of the body's immune system that helps the body fight disease and infection and includes a network of thin tubes (lymphatic vessels) that branch, like blood vessels, into tissues throughout the body. These vessels carry lymph, a colorless, watery fluid that contains infection-fighting cells called lymphocytes. Along this network of vessels are small organs called lymph nodes that are found in the underarms, groin, neck, chest, and abdomen. Other parts of the lymphatic system are the spleen, thymus, tonsils, and bone marrow. Lymphatic tissue is also found in other parts of the body, including the stomach, intestines, and skin.

Hodgkin's disease, an uncommon lymphoma, accounts for less than 1 percent of all cases of cancer in the United States. This type of cancer tends to spread in a fairly orderly way from one group of lymph nodes to the next group. For example, Hodgkin's disease that arises in the lymph nodes in the neck spreads first to the nodes above the collarbones, and then to the lymph nodes under the arms and within the chest. Eventually, it can spread to almost any other part of the body.

**Risk Factors:** Common risk factors that are believed to be associated with the development of Hodgkin's Lymphoma are: age (between 15 and 34 and over 55 years of age), being male, family history, and certain viruses (Epstein-Barr virus).

**Signs and Symptoms:** A painless swelling in the lymph nodes in the neck, underarm, or groin, unexplained recurrent fevers, night sweats, unexplained weight loss, and itchy skin are some common symptoms that can be associated with Hodgkin's Lymphoma.

**Diagnosing the Cancer:** X-rays, computed tomography (CAT) scan, and magnetic resonance imaging (MRI), and biopsy (Reed-Sternberg cells in lymph node tissue).

**Treatment:** Radiation therapy and chemotherapy are the most common treatments, but others include: bone marrow transplantation, peripheral stem cell transplantation, and biological therapies are being studied in clinical trials.



**Table 290. Hodgkin's Lymphoma Cases by Age Group and County/Region of Residence at Diagnosis, Nevada Residents (1999-2003) and SEER-13 (1998-2002)**

Category	County/Region of Residence					
	Nevada Total	Clark	Washoe	All Other Counties	Unknown	SEER 13 (1998-2002)
<b>Total</b>						
Cases	251	182	42	27	0	5,178
Rate*	2.4	2.4	2.4	2.4	---	2.7
95% C.I.	(2.1-2.7)	(2.1-2.7)	(2.1-2.7)	(2.1-2.7)	---	(2.6-2.8)
<b>Gender</b>						
Male	133	133	133	133	0	2,778
Rate*	2.5	2.5	2.5	2.5	---	3.0
95% C.I.	(2.1-2.9)	(2.1-2.9)	(2.1-2.9)	(2.1-2.9)	---	(2.9-3.1)
Female	118	118	118	118	0	2,320
Rate*	2.3	2.3	2.3	2.3	---	2.4
95% C.I.	(1.9-2.7)	(1.9-2.7)	(1.9-2.7)	(1.9-2.7)	---	(2.3-2.5)
Other/Unknown	0	0	0	0	0	0
<b>Race/Ethnicity</b>						
White	204	141	39	24	0	4,313
Rate*	2.9	2.9	2.9	2.9	---	2.9
95% C.I.	(2.5-3.3)	(2.5-3.3)	(2.5-3.3)	(2.5-3.3)	---	(2.8-3.0)
Black	18	18	0	0	0	505
Rate*	2.7	2.7	---	---	---	2.4
95% C.I.	(1.6-4.5)	(1.6-4.5)	---	---	---	(2.2-2.6)
Native American	1	0	1	0	0	10
Rate*	---	---	---	---	---	0.4
95% C.I.	---	---	---	---	---	(0.2-0.2)
Asian	9	8	1	0	0	227
Rate*	---	---	---	---	---	1.1
95% C.I.	---	---	---	---	---	(1.0-1.2)
Hispanic	15	11	1	3	0	721
Rate*	0.8	0.8	---	---	---	2.4
95% C.I.	(0.4-1.6)	(0.4-1.6)	---	---	---	(2.2-2.7)
Other/Unknown	4	4	0	0	0	46

\* Rates are per 100,000 age-specific population.

Note: The "---" is used for rates calculated on numbers less than ten and SEER numbers less than five. See Technical Notes for more information.

**Table 291. Hodgkin's Lymphoma Inpatient Discharges by Gender, Charges, Length of Stay, and County/Region of Residence, Nevada Residents, 1999-2003**

Category	County/Region of Residence				
	Nevada Total	Clark	Washoe	All Other Counties	Unknown
<b>Total</b>					
Discharges	107	83	15	9	0
Rate*	1.0	1.1	0.9	---	---
95% C.I.	(0.8-1.2)	(0.9-1.4)	(0.5-1.5)	---	---
<b>Gender</b>					
Male	59	49	8	2	0
Rate*	1.1	1.3	---	---	---
95% C.I.	(0.8-1.4)	(0.9-1.7)	---	---	---
Female	48	34	7	7	0
Rate*	0.9	0.9	---	---	---
95% C.I.	(0.7-1.2)	(0.6-1.3)	---	---	---
Other/Unknown	0	0	0	0	0
<b>Inpatient Discharge Charges (\$)</b>					
Total Charges	\$4,584,826	\$3,608,309	\$630,374	\$346,143	\$0
Average Charges	\$42,849	\$43,474	\$42,025	\$38,460	\$0
Median Charges	\$27,669	\$27,669	\$34,998	\$17,749	\$0
<b>Discharge Length of Stay (LOS) (Days)</b>					
Total LOS	811	654	103	54	0
Average LOS	7.6	7.9	6.9	6.0	0.0
Median LOS	5.0	5.0	5.0	5.0	0.0

\* Rates are per 100,000 population and are age-adjusted to the 2000 US Standard population.

Note: The "---" is used for rates calculated on numbers less than ten. Caution should be used when comparing inpatient hospital discharge data to other data sources, since it is occurrence-based data. Please See Technical Notes for more information.

**Table 292. Hodgkin's Lymphoma Mortality by Age Group and County/Region of Residence, Nevada Residents, 1999-2003**

Category	County/Region of Residence			
	Nevada Total	Clark	Washoe	All Other Counties
<b>Total</b>				
Deaths	33	22	6	5
Rate*	0.3	0.3	0.0	0.0
95% C.I.	(0.2-0.5)	(0.2-0.5)	---	---
<b>Age Group</b>				
<1	0	0	0	0
Rate*	---	---	---	---
95% C.I.	---	---	---	---
1-4	0	0	0	0
Rate*	---	---	---	---
95% C.I.	---	---	---	---
5-14	0	0	0	0
Rate*	---	---	---	---
95% C.I.	---	---	---	---
15-24	2	1	0	1
Rate*	---	---	---	---
95% C.I.	---	---	---	---
25-34	2	2	0	0
Rate*	---	---	---	---
95% C.I.	---	---	---	---
35-44	3	3	0	0
Rate*	---	---	---	---
95% C.I.	---	---	---	---
45-54	7	3	3	1
Rate*	---	---	---	---
95% C.I.	---	---	---	---
55-64	4	3	0	1
Rate*	---	---	---	---
95% C.I.	---	---	---	---
65-74	10	7	2	1
Rate*	1.5	---	---	---
95% C.I.	(0.55-2.35)	---	---	---
75-84	4	3	1	0
Rate*	---	---	---	---
95% C.I.	---	---	---	---
85+	1	0	0	1
Rate*	---	---	---	---
95% C.I.	---	---	---	---
Unknown	0	0	0	0

\* Rates are per 100,000 age-specific population.

Note: The "---" is used for rates calculated on numbers less than ten.

## ALL OTHER SITES

**Table 293. Cancer Cases for All Other Sites by Age Group and County/Region of Residence at Diagnosis, Nevada Residents (1999-2003) and SEER-13 (1998-2002)**

Category	County/Region of Residence					
	Nevada Total	Clark	Washoe	All Other Counties	Unknown	SEER 13 (1998-2002)
<b>Total</b>						
Cases	3,283	2,244	571	468	0	57,868
Rate*	33.8	33.8	33.8	33.8	---	32.2
95% C.I.	(32.6-35.0)	(32.6-35.0)	(32.6-35.0)	(32.6-35.0)	---	(31.9-32.4)
<b>Gender</b>						
Male	1,891	1,891	1,891	1,891	0	30,842
Rate*	39.9	39.9	39.9	39.9	---	38.9
95% C.I.	(38.0-41.9)	(38.0-41.9)	(38.0-41.9)	(38.0-41.9)	---	(38.5-39.4)
Female	1,391	1,391	1,391	1,391	0	26,292
Rate*	27.8	27.8	27.8	27.8	---	26.8
95% C.I.	(26.3-29.3)	(26.3-29.3)	(26.3-29.3)	(26.3-29.3)	---	(26.5-27.2)
Other/Unknown	1	1	0	0	0	0
<b>Race/Ethnicity</b>						
White	2,745	1,806	513	426	0	47,129
Rate*	35.9	35.9	35.9	35.9	---	33.3
95% C.I.	(34.6-37.3)	(34.6-37.3)	(34.6-37.3)	(34.6-37.3)	---	(33.0-33.6)
Black	170	154	10	6	0	5,156
Rate*	31.2	31.2	31.2	---	---	33.7
95% C.I.	(26.4-37.0)	(26.4-37.0)	(26.4-37.0)	---	---	(32.7-34.6)
Native American	6	1	0	5	0	400
Rate*	---	---	---	---	---	25.0
95% C.I.	---	---	---	---	---	(22.3-22.3)
Asian	94	74	17	3	0	4,000
Rate*	21.8	21.8	21.8	---	---	22.8
95% C.I.	(16.7-28.8)	(16.7-28.8)	(16.7-28.8)	---	---	(22.1-23.6)
Hispanic	229	183	28	18	0	6,123
Rate*	22.4	22.4	22.4	22.4	---	30.5
95% C.I.	(18.7-26.9)	(18.7-26.9)	(18.7-26.9)	(18.7-26.9)	---	(29.6-31.4)
Other/Unknown	39	26	3	10	0	553

\* Rates are per 100,000 age-specific population.

Note: The "---" is used for rates calculated on numbers less than ten and SEER numbers less than five. See Technical Notes for more information.

**Table 294. Inpatient Discharges for All Other Sites by Gender, Charges, Length of Stay, and County/Region of Residence, Nevada Residents, 1999-2003**

Category	County/Region of Residence				
	Nevada Total	Clark	Washoe	All Other Counties	Unknown
<b>Total</b>					
Discharges	8,150	5,795	1,346	1,007	2
Rate*	81.1	84.1	83.9	64.2	---
95% C.I.	(79.3-82.9)	(82.0-86.4)	(79.4-88.6)	(60.2-69.0)	---
<b>Gender</b>					
Male	3,696	2,595	601	498	2
Rate*	78.2	80.0	81.6	67.3	---
95% C.I.	(75.6-81.0)	(76.7-83.3)	(74.9-88.9)	(61.1-75.1)	---
Female	4,454	3,200	745	509	0
Rate*	85.4	89.7	88.1	62.6	---
95% C.I.	(82.9-87.9)	(86.6-92.9)	(81.9-94.7)	(57.2-68.3)	---
Other/Unknown	0	0	0	0	0
<b>Inpatient Discharge Charges (\$)</b>					
Total Charges	\$298,842,867	\$224,874,784	\$44,897,412	\$28,978,420	\$92,251
Average Charges	\$36,668	\$38,805	\$33,356	\$28,777	\$46,126
Median Charges	\$23,985	\$25,153	\$23,248	\$18,930	\$46,126
<b>Discharge Length of Stay (LOS) (Days)</b>					
Total LOS	60,380	43,543	10,180	6,627	30
Average LOS	7.4	7.5	7.6	6.6	15.0
Median LOS	5.0	5.0	6.0	5.0	15.0

\* Rates are per 100,000 population and are age-adjusted to the 2000 US Standard population.

Note: The "---" is used for rates calculated on numbers less than ten. Caution should be used when comparing inpatient hospital discharge data to other data sources, since it is occurrence-based data. Please See Technical Notes for more information.

**Table 295. All Other Sites Cancer Mortality by Age Group and County/Region of Residence, Nevada Residents, 1999-2003**

Category	County/Region of Residence			
	Nevada Total	Clark	Washoe	All Other Counties
<b>Total</b>				
Deaths	2,159	1,399	396	364
Rate*	23.3	22.2	26.6	24.6
95% C.I.	(22.3-24.3)	(21.0-23.5)	(24.0-29.5)	(22.1-27.3)
<b>Age Group</b>				
<1	1	1	0	0
Rate*	---	---	---	---
95% C.I.	---	---	---	---
1-4	1	0	0	1
Rate*	---	---	---	---
95% C.I.	---	---	---	---
5-14	6	6	0	0
Rate*	---	---	---	---
95% C.I.	---	---	---	---
15-24	14	10	2	2
Rate*	0.9	1.0	---	---
95% C.I.	(0.45-1.44)	(0.37-1.56)	---	---
25-34	31	24	3	4
Rate*	2.0	2.1	---	---
95% C.I.	(1.29-2.69)	(1.25-2.93)	---	---
35-44	54	37	10	7
Rate*	3.3	3.2	3.5	---
95% C.I.	(2.39-4.13)	(2.18-4.26)	(1.34-5.71)	---
45-54	193	131	33	29
Rate*	13.6	13.8	13.0	13.4
95% C.I.	(11.67-15.50)	(11.40-16.11)	(8.59-17.49)	(8.55-18.34)
55-64	407	289	62	56
Rate*	39.6	41.0	37.7	35.3
95% C.I.	(35.73-43.42)	(36.25-45.70)	(28.33-47.11)	(26.03-44.51)
65-74	594	384	111	99
Rate*	86.4	81.5	106.3	88.3
95% C.I.	(79.41-93.30)	(73.34-89.64)	(86.51-126.06)	(70.87-105.64)
75-84	617	369	128	120
Rate*	157.3	139.0	208.2	183.6
95% C.I.	(144.89-169.71)	(124.85-153.23)	(172.10-244.23)	(150.75-216.45)
85+	241	148	47	46
Rate*	273.9	266.1	282.9	292.1
95% C.I.	(239.34-308.50)	(223.22-308.96)	(202.02-363.77)	(207.69-376.52)
Unknown	0	0	0	0

\* Rates are per 100,000 age-specific population.

Note: The "---" is used for rates calculated on numbers less than ten.