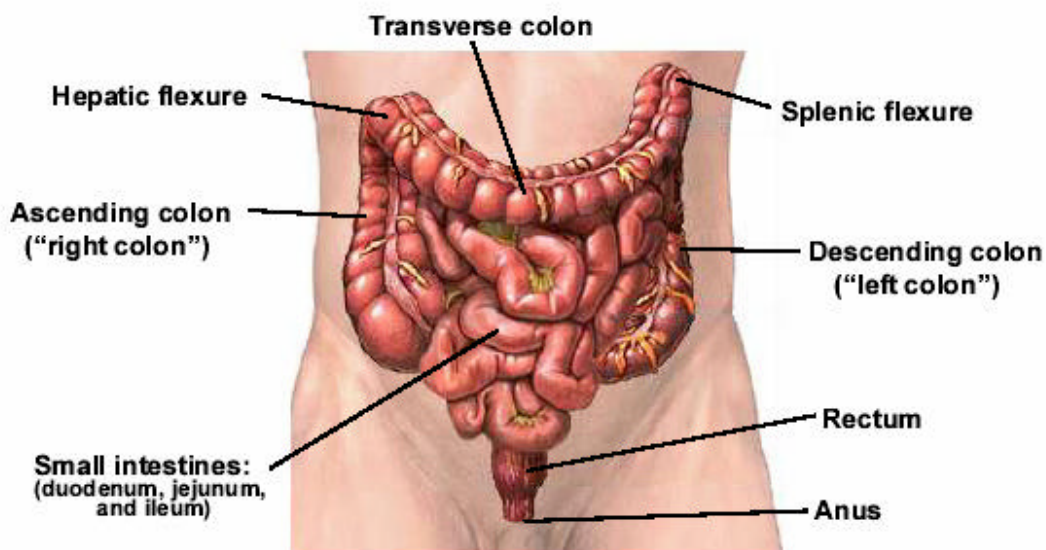


COLORECTAL CANCER

COLORECTAL CANCER

GENERAL PROFILE⁴

Figure 75. Anatomy of the Digestive System⁵



General Anatomy: The colon and rectum are parts of the body's digestive system, which removes nutrients from food and stores waste until it is passed out of the body. Together, the colon and rectum form a long, muscular tube called the large intestine (also called the large bowel). The colon makes up the proximal 6 feet of the large intestine, and the rectum is identified as the most distal 8 to 10 inches of the large intestine.

Risk Factors: Age, diet, polyps (benign growths on the inner wall of the colon and rectum), personal medical history, family medical history, and ulcerative colitis (the lining of the colon becomes inflamed).

Signs and Symptoms: A change in bowel habits, diarrhea, constipation, or feeling that the bowel does not empty completely, blood (either bright red or very dark) in the stool, stools that are narrower than usual, general abdominal discomfort (frequent gas pains, bloating, fullness, and/or cramps), weight loss with no known reason, constant tiredness, and vomiting.

Diagnosing the Cancer: Fecal occult blood test, sigmoidoscopy, colonoscopy, double contrast barium enema (DCBE), polypectomy, biopsy, and a digital rectal exam.

Treatment: Treatment options include: surgery (Colostomy), chemotherapy, radiation therapy, biological therapy, and clinical trials.

HIGHLIGHTS

- The ratio of the age-adjusted incidence rate, 52.4, to the age-adjusted mortality rate, 22.9 (per 100,000 – 2000 US Standard population), for Colorectal Cancer was 2.29 during the 1997 to 2001 period, which means that for every 2.29 Colorectal Cancer cases diagnosed during this period, there was one death due to Colorectal Cancer in Nevada.
- Nevadan females had a higher ratio than males when the age-adjusted incidence and age-adjusted mortality rates for Colorectal Cancer were compared. For every female death due to Colorectal Cancer there was 2.43 female cases while there were 2.17 male cases for every male Colorectal Cancer death in Nevada from 1997 to 2001.
- The median age at diagnosis of Colorectal Cancer was 70 years of age for Nevada residents from 1996 to 2001, while the median age at time of death was 72 years.

CANCER SCREENING

- Of the 3,841 individuals in Nevada who were surveyed in 1997, 1999 and 2001, 51.9% responded no to ever having a blood stool test and/or a sigmoidoscopy or colonoscopy to try and detect early signs of Colorectal Cancer.
- Males had a lower percentage of respondents who said yes to ever having a blood stool test and/or a sigmoidoscopy or colonoscopy than females (49.3%) with a percentage of 46.9% when the questions were asked in 1997, 1999 and 2001.
- Each age group showed statistical significance over the next age group for those respondents who said that they had never had a blood stool test and/or a sigmoidoscopy or colonoscopy, with the 35 to 44 age group having the highest percentage at 85.1% (82.1%-88.1%); being followed by the 45 to 54, 55 to 64 and 65 and older age groups with percentages of 59.8% (57.0%-62.6%), 44.5% (41.3%-47.7%) and 34.6% (31.8%-37.4%), respectively, when these questions were included in the Behavioral Risk Factor Surveillance Survey.

INCIDENCE

- Nevada's incidence rate for Colorectal Cancer (52.4) was only slightly lower than the National rate of 55.0 (per 100,000 – 2000 US Standard population) from 1997 to 2001.
- There were 4,530 cases of Colorectal Cancer reported in Nevada from 1997 to 2001. Regional comparisons of Colorectal Cancer incidence showed that Clark County had the highest age-adjusted incidence rate, 54.1, followed by Washoe County, 53.3, and the All Other Counties region, 44.7 (per 100,000 – 2001 US Standard population), during the 1997 to 2001 period.
- Males had a statistically significant higher age-adjusted incidence rate for Colorectal Cancer 59.3 (56.8-62.0) than the female rate of 46.5 (44.5-48.6) during the 1997 to 2001

period.

- The Colorectal Cancer age-adjusted incidence rates for Blacks, 56.7 (49.0-65.6), and Whites, 55.8 (54.0-57.6), showed statistical significance over, and were nearly double, the rates for all other racial/ethnic groups from 1997 to 2001. They were followed by Asians, Hispanics and Native Americans with rates of 30.8 (24.0-40.2), 23.8 (19.3-29.4) and 15.9 (8.6-28.3), respectively.

INPATIENT HOSPITAL DISCHARGES

- There were 4,196 Nevada resident hospital inpatient discharges with a primary diagnosis of Colorectal Cancer from 1997 to 2001. Clark County had the highest cancer age-adjusted inpatient discharge rate, 50.7 (48.8-52.7), once regional comparisons were made. However, the rate was only statistically significant over the All Other Counties region which had the lowest age-adjusted discharge rate, 39.4 (36.2-42.9), during this same period.
- Total billed charges for Colorectal Cancer inpatient hospital discharges in Nevada totaled nearly 145.3 million dollars from 1997 to 2001. The overall average billed charge per day for a hospital inpatient discharge due to Colorectal Cancer was approximately \$4,122 in Nevada from 1997 to 2001.
- Clark County had the highest median total billed amount (\$35,855). Washoe County had the highest average length of stay, once regional comparisons were made (8.7 days) during this time.

MORTALITY

- There were 1,891 resident deaths due to Colorectal Cancer in Nevada from 1997 to 2001. Males had a higher statistically significant age-adjusted mortality rate, 27.3 (25.5-29.2), than females who had a rate of 19.1 (17.8-20.4), per 100,000 – 2000 US Standard population, during this period.
- Blacks, as a racial/ethnic group, had the highest age-adjusted mortality rate for Colorectal Cancer of any racial/ethnic group, 31.3, and were followed by Whites, Native Americans, Asians, and Hispanics with rates of 23.6, 15.6, 12.9, and 12.0, (per 100,000 – 2000 US Standard population) respectively, from 1997 to 2001.

SURVIVAL RATE

- The one-year survival rate for Colorectal Cancer in Nevada was 74.1% during the 1997 to 2001 period, while the five-year survival rate was 49.0% during this same time. The median survival rate in Nevada was 3.81 years.
- Females in Nevada had a slightly higher one-year survival rate (75.2%) than males (73.2%) for Colorectal Cancer during the 1997 to 2001 period. This trend was similar for the median survival time with females and males at over 5 years and 3.49 years,

respectively. Females also had a higher five-year survival rate (50.3%) for Colorectal Cancer than males who had a rate of 48.1% during this time.

- Hispanics had a considerably higher median survival time than other racial/ethnic groups with a period of over five years, while Whites and Blacks had periods of 3.56 and 2.96 years, respectively.
- The five-year survival rate for those diagnosed at the localized stage for Colorectal Cancer was 67.8% for Nevada from 1997 to 2001, while those recorded at the regional, distant and unstaged stages had rates of 53.0%, 22.2% and 33.9%, respectively.
- While the median survival time for those diagnosed at the localized and Regional stages was over five years for Colorectal Cancer, those diagnosed at the distant and unstaged levels had median survival times of, 1.43 and 1.88 years, respectively, for Nevada during the 1997 to 2001 period.

SCREENING (BRFSS)**Table 107. Colorectal Cancer Screening by County/Region of Residence, Gender, Education, Age Group, and Income, Nevada Residents, 1997, 1999 and 2001**

Responses	Answers						Total
	Yes			No			
	Number	Percent*	95% C.I.	Number	Percent*	95% C.I.	
Total							
Responses	1,828	48.1%	(46.5%-49.7%)	2,013	51.9%	(50.3%-53.5%)	3,841
County/Region of Residence							
Clark County	569	48.0%	(45.2%-50.8%)	662	52.0%	(49.2%-54.8%)	1,231
Washoe County	581	49.2%	(46.4%-52.0%)	612	50.8%	(48.0%-53.6%)	1,193
All Other Counties	678	47.7%	(45.1%-50.3%)	739	52.3%	(49.7%-54.9%)	1,417
Gender							
Male	881	46.9%	(44.6%-49.2%)	989	53.1%	(50.8%-55.4%)	1,870
Female	947	49.3%	(47.1%-51.5%)	1,024	50.7%	(48.5%-52.9%)	1,971
Education							
Less than High School	169	51.7%	(46.4%-57.0%)	170	48.3%	(43.0%-53.6%)	339
High School	483	41.9%	(39.0%-44.8%)	664	58.1%	(55.2%-61.0%)	1,147
Some Post High School	600	50.1%	(47.3%-52.9%)	659	49.9%	(47.1%-52.7%)	1,259
College Graduate	572	51.6%	(48.6%-54.6%)	513	48.4%	(45.4%-51.4%)	1,085
Age Group							
18-24 years old	0	---	---	0	---	---	0
25-34 years old	0	---	---	0	---	---	0
35-44 years old	89	14.9%	(11.9%-17.9%)	468	85.1%	(82.1%-88.1%)	557
45-54 years old	443	40.2%	(37.4%-43.0%)	740	59.8%	(57.0%-62.6%)	1,183
55-64 years old	529	55.5%	(52.3%-58.7%)	422	44.5%	(41.3%-47.7%)	951
65+ years old	762	65.4%	(62.6%-68.2%)	370	34.6%	(31.8%-37.4%)	1,132
Income							
Less than \$15,000	179	40.0%	(35.1%-44.9%)	201	60.0%	(55.1%-64.9%)	380
\$15,000 - \$24,999	172	50.6%	(45.3%-55.9%)	166	49.4%	(44.1%-54.7%)	338
\$25,000 - \$34,999	228	41.9%	(37.7%-46.1%)	297	58.1%	(53.9%-62.3%)	525
\$35,000 - \$49,999	317	46.4%	(42.7%-50.1%)	392	53.6%	(49.9%-57.3%)	709
\$50,000 or More	606	48.1%	(45.4%-50.8%)	664	51.9%	(49.2%-54.6%)	1,270

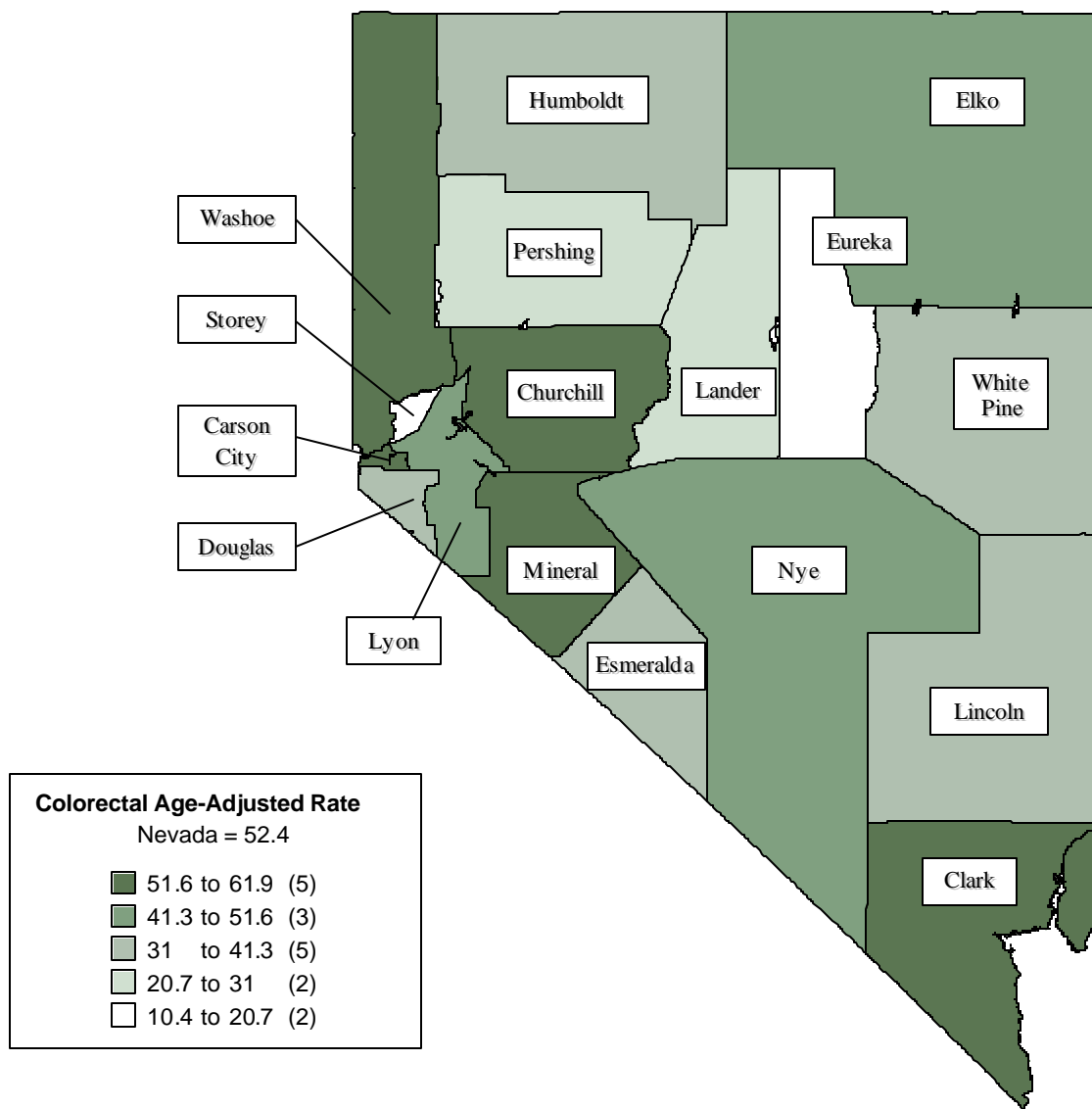
*Denominator is persons age 18-64 and excludes missing, don't know, and refused responses.

Note: This table includes those respondents who answered "Yes" or "No" to either of the following questions:

- 1) A blood stool test is a test that may use a special kit at home to determine whether the stool contains blood. Have you ever had this test using a home kit?
- 2) A sigmoidoscopy or colonoscopy is when a tube is inserted in the rectum to view the bowel for signs of cancer and other health problems. Have you ever had this exam?

INCIDENCE

Figure 76. Colorectal Cancer Age-Adjusted (2001) Incidence Rates, Nevada Residents, 1997-2001



Note: Rates are per 100,000 population and age-adjusted to 2001 US Standard population. Caution should be used when interpreting rates based upon small numbers. See Technical notes for more information.

Figure 77. Colorectal Cancer Age-Adjusted Incidence Rates by County/Region of Residence, Nevada Residents, 1997-2001

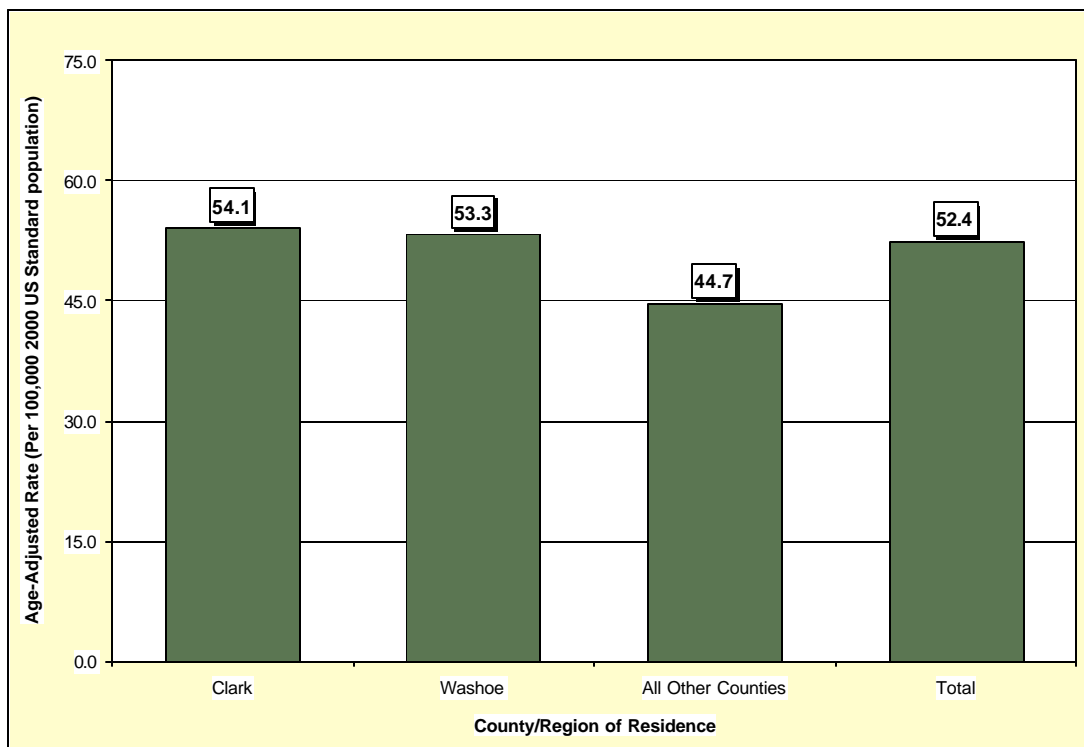


Figure 78. Colorectal Cancer Age-Adjusted Incidence Rates by Race/Ethnicity, Nevada Residents, 1997-2001

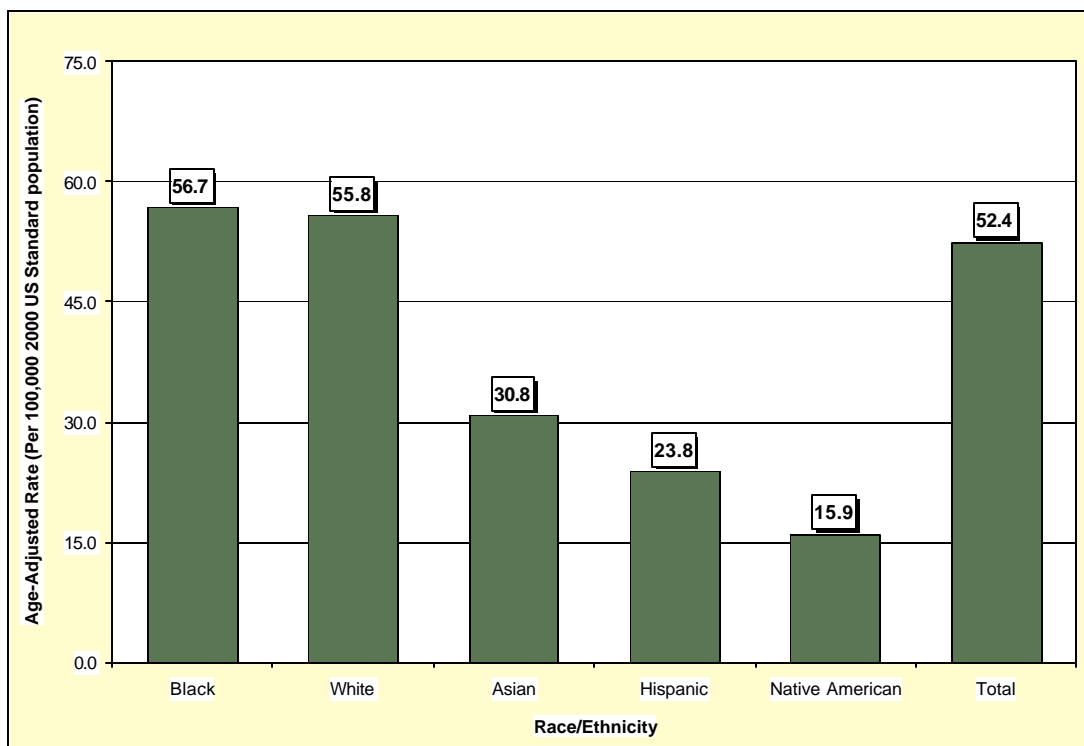


Table 108. Colorectal Cancer Cases by Gender, Race/Ethnicity and County/Region of Residence at Diagnosis, Nevada Residents (1997-2001) and SEER-11 (1997-2001)

Category	County/Region of Residence					SEER 11 (1997-2001)
	Nevada Total	Clark	Washoe	All Other Counties	Unknown	
Total						
Cases	4,530	3,118	775	637	0	94,216
Rate*	52.4	54.1	53.3	44.7	---	55.0
95% C.I.	(50.9-54.0)	(52.2-56.2)	(49.6-57.3)	(41.2-48.4)	---	(54.7-55.4)
Gender						
Male	2,419	1,659	419	341	0	47,193
Rate*	59.3	61.1	61.6	50.1	---	64.6
95% C.I.	(56.8-62.0)	(58.0-64.5)	(55.6-68.4)	(44.7-56.2)	---	(64.0-65.2)
Female	2,111	1,459	356	296	0	47,023
Rate*	46.5	48.3	45.8	40.0	---	47.8
95% C.I.	(44.5-48.6)	(45.8-50.9)	(41.2-50.9)	(35.6-44.9)	---	(47.3-48.2)
Other/Unknown	0	0	0	0	0	0
Race/Ethnicity						
White	4,026	2,714	712	600	0	76,262
Rate*	55.8	58.6	55.7	45.8	---	54.8
95% C.I.	(54.0-57.6)	(56.4-61.0)	(51.6-60.0)	(42.1-49.7)	---	(54.4-55.1)
Black	225	187	25	13	0	9,007
Rate*	56.7	50.4	112.1	172.7	---	64.6
95% C.I.	(49.0-65.6)	(42.8-59.3)	(71.5-169.4)	(91.2-301.2)	---	(63.2-65.9)
Native American	15	4	5	6	0	546
Rate*	15.9	---	---	---	---	35.9
95% C.I.	(8.6-28.3)	---	---	---	---	(32.7-32.7)
Asian	106	87	16	3	0	7,948
Rate*	30.8	31.5	30.0	---	---	46.8
95% C.I.	(24.0-40.2)	(23.6-43.1)	(16.1-60.7)	---	---	(45.8-47.9)
Hispanic	129	100	16	13	0	6,450
Rate*	23.8	23.7	21.6	28.0	---	40.3
95% C.I.	(19.3-29.4)	(18.5-30.4)	(11.7-40.2)	(14.0-51.8)	---	(39.3-41.4)
Other/Unknown	29	26	1	2	0	453

* Rates are per 100,000 population and age-adjusted to the 2001 US Standard population.

Note: The "----" is used for rates calculated on numbers less than ten and SEER numbers less than five. Caution should be used when comparing rates for racial/ethnic groups to the National (SEER) rates. See Technical Notes for more information.

Table 109. Colorectal Cancer Cases by Age Group and County/Region of Residence at Diagnosis, Nevada Residents (1997-2001) and SEER-11 (1997-2001)

Category	County/Region of Residence					SEER 11 (1997-2001)
	Nevada Total	Clark	Washoe	All Other Counties	Unknown	
Total						
Cases	4,530	3,118	775	637	0	94,216
Rate*	46.5	46.8	46.2	45.6	---	50.9
95% C.I.	(45.2-47.9)	(45.2-48.4)	(42.9-49.4)	(42.0-49.1)	---	(50.6-51.2)
Age Group						
<1	0	0	0	0	0	---
Rate*	---	---	---	---	---	---
95% C.I.	---	---	---	---	---	---
1-4	0	0	0	0	0	---
Rate*	---	---	---	---	---	---
95% C.I.	---	---	---	---	---	---
5-14	1	0	1	0	0	12
Rate*	---	---	---	---	---	0.0
95% C.I.	---	---	---	---	---	(0.0-0.1)
15-24	1	0	1	0	0	129
Rate*	---	---	---	---	---	0.5
95% C.I.	---	---	---	---	---	(0.4-0.6)
25-34	34	26	6	2	0	835
Rate*	2.3	2.4	---	---	---	2.9
95% C.I.	(1.5-3.1)	(1.5-3.4)	---	---	---	(2.7-3.0)
35-44	157	118	22	17	0	3,484
Rate*	10.1	11.3	7.8	7.5	---	11.2
95% C.I.	(8.5-11.7)	(9.2-13.3)	(4.5-11.0)	(3.9-11.1)	---	(10.8-11.5)
45-54	458	310	78	70	0	9,602
Rate*	35.7	36.6	33.0	34.9	---	42.0
95% C.I.	(32.4-38.9)	(32.5-40.7)	(25.7-40.3)	(26.7-43.0)	---	(41.1-42.8)
55-64	898	641	147	110	0	15,857
Rate*	98.0	103.1	97.9	76.1	---	113.3
95% C.I.	(91.6-104.4)	(95.1-111.1)	(82.1-113.8)	(61.9-90.4)	---	(111.5-115.0)
65-74	1,444	979	253	212	0	25,272
Rate*	224.8	226.3	246.8	197.8	---	219.1
95% C.I.	(213.2-236.4)	(212.2-240.5)	(216.4-277.2)	(171.1-224.4)	---	(216.3-221.8)
75-84	1,184	826	189	169	0	27,288
Rate*	337.1	353.7	326.8	282.1	---	375.4
95% C.I.	(317.9-356.3)	(329.6-377.8)	(280.2-373.4)	(239.6-324.7)	---	(371.0-379.9)
85+	348	218	74	56	0	11,736
Rate*	456.5	466.8	477.1	399.1	---	473.2
95% C.I.	(408.5-504.4)	(404.9-528.8)	(368.4-585.9)	(294.6-503.6)	---	(464.6-481.8)
Unknown	5	0	4	1	0	0

* Rates are per 100,000 age-specific population.

Note: The "----" is used for rates calculated on numbers less than ten and SEER numbers less than five. See Technical Notes for more information.

Table 110. Colorectal Cancer Cases by County of Residence at Diagnosis, Nevada Residents, 1997-2001

County of Residence at Diagnosis	1997-2001 Incidence				
	Cases	Rate*		Age-Adjusted Rate**	
		Rate	95% C.I.	Rate	95% C.I.
Carson City	161	64.6	(54.6-74.6)	55.8	(47.5-65.4)
Churchill	62	51.4	(38.6-64.2)	55.7	(42.6-72.0)
Clark	3,118	46.8	(45.2-48.4)	54.1	(52.2-56.2)
Douglas	90	43.9	(34.8-53.0)	37.8	(30.1-47.3)
Elko	50	21.6	(15.6-27.6)	45.5	(32.7-62.1)
Esmeralda	2	---	---	---	---
Eureka	1	---	---	---	---
Humboldt	20	23.8	(13.4-34.3)	36.7	(21.8-59.1)
Lander	7	---	---	---	---
Lincoln	10	49.4	(18.8-80.0)	39.1	(18.6-82.1)
Lyon	88	51.7	(40.9-62.6)	45.2	(36.1-56.3)
Mineral	21	79.6	(45.5-113.6)	61.8	(37.7-100.4)
Nye	100	63.6	(51.2-76.1)	44.9	(36.1-56.1)
Pershing	7	---	---	---	---
Storey	2	---	---	---	---
Washoe	775	46.2	(42.9-49.4)	53.3	(49.6-57.3)
White Pine	16	38.1	(19.4-56.7)	32.9	(18.7-55.8)
Unknown	0	---	---	---	---
Total	4,530	46.5	(45.2-47.9)	52.4	(50.9-54.0)

Note: The “---” is used for rates calculated on numbers less than ten. *Rates are per 100,000 population. **Rates are per 100,000 population and are age-adjusted to the 2001 US Standard population.

Table 111. Colorectal Cancer Cases by Race/Ethnicity and Gender, Nevada Residents, 1997-2001

Race/Ethnicity		Gender			
		Male	Female	Other/Unknown	Total
White	Incidence	2,155	1,871	0	4,026
	Rate*	62.7	49.7	---	55.8
	95% C.I.	(60.0-65.7)	(47.5-52.0)	---	(54.0-57.6)
Black	Incidence	116	109	0	225
	Rate*	62.2	52.0	---	56.7
	95% C.I.	(49.6-78.7)	(42.3-63.5)	---	(49.0-65.6)
Native American	Incidence	8	7	0	15
	Rate*	---	---	---	15.9
	95% C.I.	---	---	---	(8.6-28.3)
Asian	Incidence	58	48	0	106
	Rate*	42.7	21.8	---	30.8
	95% C.I.	(29.8-62.3)	(15.7-33.0)	---	(24.0-40.2)
Hispanic	Incidence	69	60	0	129
	Rate*	26.2	21.4	---	23.8
	95% C.I.	(19.2-36.4)	(15.8-28.8)	---	(19.3-29.4)
Other/Unknown		13	16	0	29
Total	Incidence	2,419	2,111	0	4,530
	Rate*	59.3	46.5	---	52.4
	95% C.I.	(56.8-62.0)	(44.5-48.6)	---	(50.9-54.0)

Note: The “---” is used for rates calculated on numbers less than ten. *Rates are per 100,000 population and are age-adjusted to the 2001 US Standard population.

Table 112. Colorectal Cancer Cases by Age Group and Gender, Nevada Residents, 1997-2001

Age Group	Gender			
	Male	Female	Other/ Unknown	Total
<1	0	0	0	0
Rate*	---	---	---	---
95% C.I.	---	---	---	---
1-4	0	0	0	0
Rate*	---	---	---	---
95% C.I.	---	---	---	---
5-14	0	1	0	1
Rate*	---	---	---	---
95% C.I.	---	---	---	---
15-24	0	1	0	1
Rate*	---	---	---	---
95% C.I.	---	---	---	---
25-34	13	21	0	34
Rate*	1.7	3.0	---	2.3
95% C.I.	(0.8-2.6)	(1.7-4.2)	---	(1.5-3.1)
35-44	77	80	0	157
Rate*	9.6	10.7	---	10.1
95% C.I.	(7.4-11.7)	(8.3-13.0)	---	(8.5-11.7)
45-54	241	217	0	458
Rate*	37.1	34.2	---	35.7
95% C.I.	(32.4-41.8)	(29.7-38.8)	---	(32.4-38.9)
55-64	536	362	0	898
Rate*	117.8	78.5	---	98.0
95% C.I.	(107.8-127.8)	(70.4-86.6)	---	(91.6-104.4)
65-74	822	622	0	1,444
Rate*	259.3	191.2	---	224.8
95% C.I.	(241.6-277.1)	(176.2-206.2)	---	(213.2-236.4)
75-84	595	589	0	1,184
Rate*	375.3	305.6	---	337.1
95% C.I.	(345.2-405.5)	(280.9-330.2)	---	(317.9-356.3)
85+	131	217	0	348
Rate*	529.4	421.4	---	456.5
95% C.I.	(438.7-620.0)	(365.4-477.5)	---	(408.5-504.4)
Unknown	4	1	0	5
Total	2,419	2,111	0	4,530
Rate*	48.9	44.1	---	46.5
95% C.I.	(46.9-50.8)	(42.2-46.0)	---	(45.2-47.9)

Note: The "----" is used for rates calculated on numbers less than ten.

* Rates are per 100,000 age-specific population.

Table 113. Colorectal Cancer Cases by Age Group and Stage, Nevada Residents, 1997-2001

Age Group		Stage					Total
		In situ	Localized	Regional	Distant	Unstaged	
<1	Number	0	0	0	0	0	0
	Percent	---	---	---	---	---	---
1-4	Number	0	0	0	0	0	0
	Percent	---	---	---	---	---	---
5-14	Number	0	0	1	0	0	1
	Percent	---	---	100.0%	---	---	100.0%
15-24	Number	0	0	0	1	0	1
	Percent	---	---	---	100.0%	---	100.0%
25-34	Number	0	13	12	3	6	34
	Percent	---	38.2%	35.3%	8.8%	17.6%	100.0%
35-44	Number	0	51	54	30	22	157
	Percent	---	32.5%	34.4%	19.1%	14.0%	100.0%
45-54	Number	0	133	175	95	55	458
	Percent	---	29.0%	38.2%	20.7%	12.0%	100.0%
55-64	Number	0	278	317	190	113	898
	Percent	---	31.0%	35.3%	21.2%	12.6%	100.0%
65-74	Number	0	450	537	281	176	1,444
	Percent	---	31.2%	37.2%	19.5%	12.2%	100.0%
75-84	Number	0	376	416	191	201	1,184
	Percent	---	31.8%	35.1%	16.1%	17.0%	100.0%
85+	Number	0	91	123	57	77	348
	Percent	---	26.1%	35.3%	16.4%	22.1%	100.0%
Unknown	Number	0	0	3	2	0	5
	Percent	---	---	60.0%	40.0%	---	100.0%
Total	Number	0	1,392	1,638	850	650	4,530
	Percent	---	30.7%	36.2%	18.8%	14.3%	100.0%

Table 114. Colorectal Cancer Cases by Stage and Race/Ethnicity, Nevada Residents, 1997-2001

Stage		Race/Ethnicity						Total
		White	Black	Native American	Asian	Hispanic	Other/Unknown	
In situ	Number	0	0	0	0	0	0	0
	Percent	---	---	---	---	---	---	---
Localized	Number	1,246	56	7	27	47	9	1,392
	Percent	30.9%	24.9%	46.7%	25.5%	36.4%	31.0%	30.7%
Regional	Number	1,455	84	6	42	39	12	1,638
	Percent	36.1%	37.3%	40.0%	39.6%	30.2%	41.4%	36.2%
Distant	Number	752	47	0	21	26	4	850
	Percent	18.7%	20.9%	---	19.8%	20.2%	13.8%	18.8%
Unstaged	Number	573	38	2	16	17	4	650
	Percent	14.2%	16.9%	13.3%	15.1%	13.2%	13.8%	14.3%
Total	Number	4,026	225	15	106	129	29	4,530
	Percent	100.0%	100.0%	100.0%	100.0%	100.0%	100.0%	100.0%

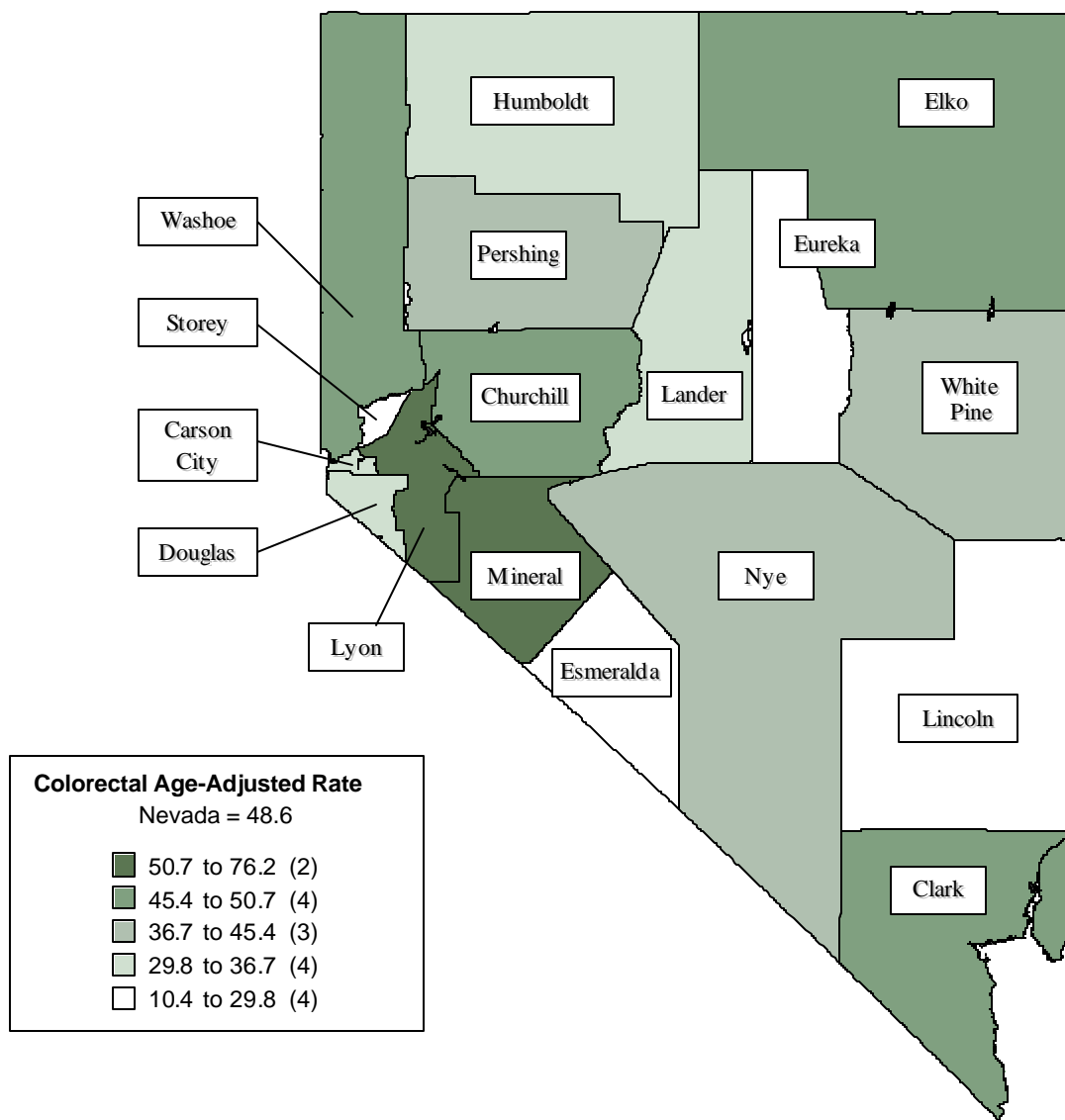
Table 115. Median Age at Diagnosis of Colorectal Cancer by Race/Ethnicity and Gender, Nevada Residents, 1997-2001

Race/Ethnicity	Gender					
	Male		Female		Total	
	Incidence	Median Age	Incidence	Median Age	Incidence	Median Age
White	2,152	69.0	1,870	71.0	4,022	70.0
Black	115	66.0	109	67.0	224	67.0
Native American	8	56.5	7	75.0	15	64.0
Asian	58	64.0	48	64.5	106	64.0
Hispanic	69	66.0	60	69.0	129	67.0
Other/Unknown	13	63.0	16	72.0	29	69.0
Total	2,415	69.0	2,110	71.0	4,525	70.0

Note: Those cases of other/unknown gender and/or unknown ages are not included in this table. The median age was not calculated for those numbers less than five.

INPATIENT HOSPITAL DISCHARGES

Figure 79. Colorectal Cancer Age-Adjusted (2001) Inpatient Discharge Rates, Nevada Residents, 1997-2001



Note: Rates are per 100,000 population and age-adjusted to 2001 US Standard population. Caution should be used when interpreting rates based upon small numbers and comparing inpatient hospital discharge rates to other data sources, because it is occurrence based data. See Technical notes for more information.

Figure 80. Colorectal Cancer Age-Adjusted Inpatient Discharge Rates by County/Region of Residence, Nevada Residents, 1997-2001

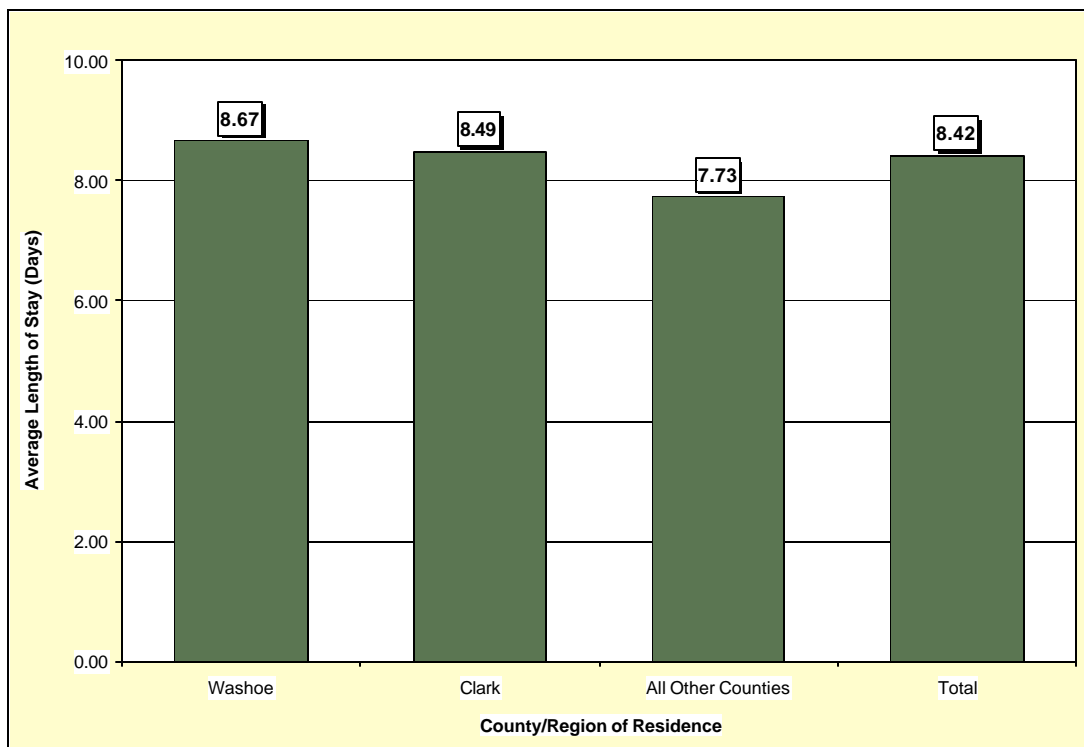


Figure 81. Median Charges for Colorectal Cancer Inpatient Discharges by County/Region of Residence, Nevada Residents, 1997-2001

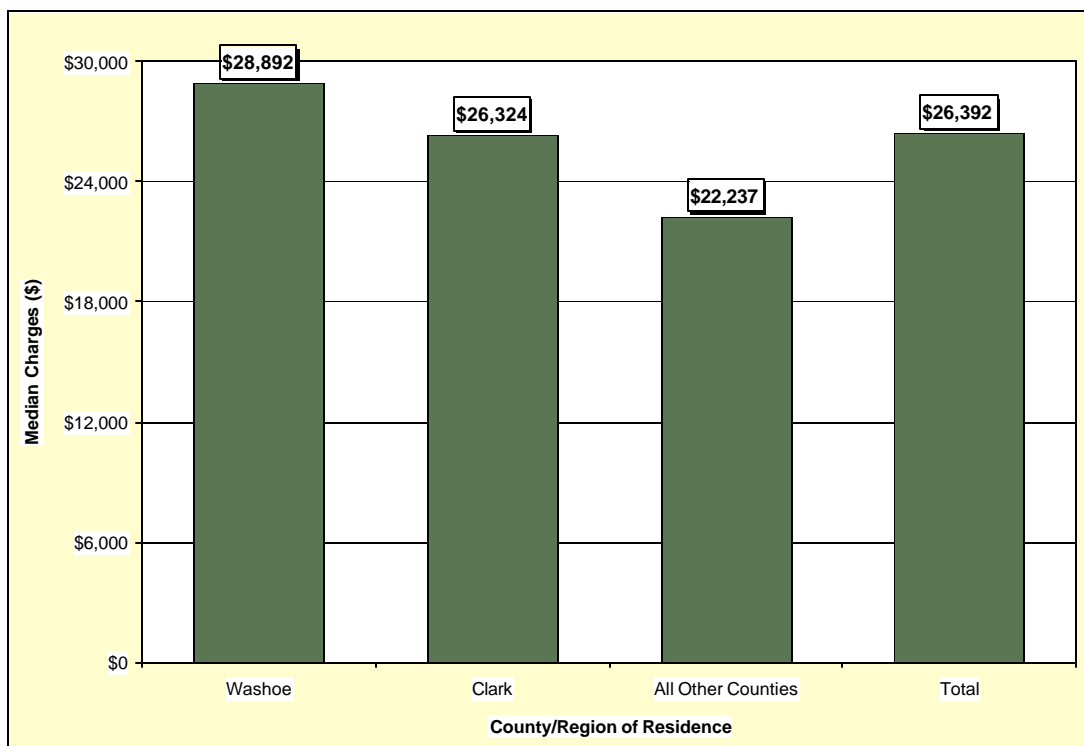


Figure 82. Average Length of Stay for Colorectal Cancer Inpatient Discharges by County/Region of Residence, Nevada Residents, 1997-2001

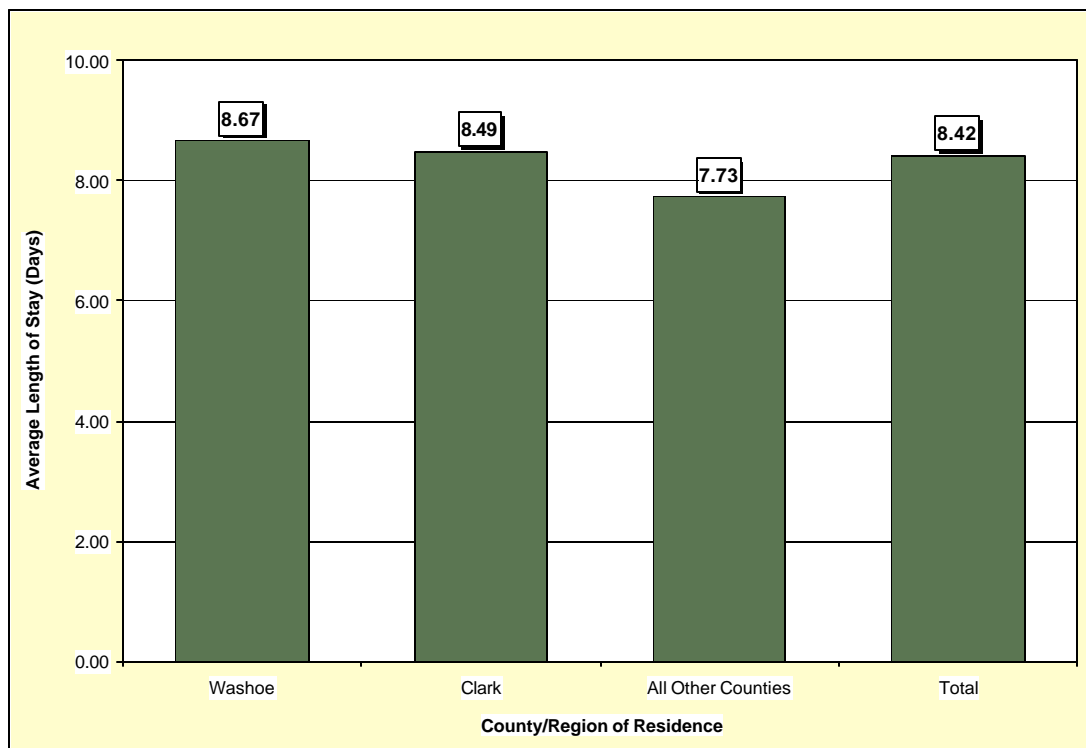


Table 116. Colorectal Cancer Inpatient Discharges by Gender, Charges, Length of Stay, and County/Region of Residence, Nevada Residents, 1997-2001

Category	County/Region of Residence				
	Nevada Total	Clark	Washoe	All Other Counties	Unknown
Total					
Discharges	4,196	2,928	706	562	0
Rate*	48.6	50.7	49.2	39.4	---
95% C.I.	(47.1-50.2)	(48.8-52.7)	(45.6-53.1)	(36.2-42.9)	---
Gender					
Male	2,169	1,529	339	301	0
Rate*	52.9	56.2	50.6	43.1	---
95% C.I.	(50.5-55.4)	(53.1-59.4)	(45.0-56.8)	(38.2-48.7)	---
Female	2,027	1,399	367	261	0
Rate*	44.7	46.2	47.4	35.5	---
95% C.I.	(42.8-46.8)	(43.7-48.7)	(42.7-52.6)	(31.3-40.2)	---
Other/Unknown	0	0	0	0	0
Inpatient Discharge Charges (\$)					
Total Charges	\$145,312,024	\$104,984,223	\$23,941,559	\$16,386,242	---
Average Charges	\$34,631	\$35,855	\$33,912	\$29,157	---
Median Charges	\$26,392	\$26,324	\$28,892	\$22,237	---
Discharge Length of Stay (LOS) (Days)					
Total LOS	35,339	24,868	6,124	4,347	---
Average LOS	8.4	8.5	8.7	7.7	---
Median LOS	7.0	7.0	8.0	6.0	---

* Rates are per 100,000 population and are age-adjusted to the 2001 US Standard population.

Note: The "---" is used for rates calculated on numbers less than ten. Caution should be used when comparing inpatient hospital discharge data to other data sources, since it is occurrence-based data. Please see Technical Notes for more information.

Table 117. Colorectal Cancer Inpatient Discharges by Age Group and County/Region of Residence, Nevada Residents, 1997-2001

Category	County/Region of Residence				
	Nevada Total	Clark	Washoe	All Other Counties	Unknown
Total					
Discharges	4,196	2,928	706	562	0
Rate*	43.1	44.0	42.1	40.2	---
95% C.I.	(41.8-44.4)	(42.4-45.5)	(39.0-45.2)	(36.9-43.5)	---
Age Group					
<1	0	0	0	0	0
Rate*	---	---	---	---	---
95% C.I.	---	---	---	---	---
1-4	0	0	0	0	0
Rate*	---	---	---	---	---
95% C.I.	---	---	---	---	---
5-14	1	0	1	0	0
Rate*	---	---	---	---	---
95% C.I.	---	---	---	---	---
15-24	2	2	0	0	0
Rate*	---	---	---	---	---
95% C.I.	---	---	---	---	---
25-34	31	23	3	5	0
Rate*	2.1	2.2	---	---	---
95% C.I.	(1.4-2.8)	(1.3-3.0)	---	---	---
35-44	121	95	14	12	0
Rate*	7.8	9.1	4.9	4.2	---
95% C.I.	(6.4-9.2)	(7.3-10.9)	(2.4-7.5)	(1.8-6.6)	---
45-54	414	292	71	51	0
Rate*	32.2	34.5	30.0	21.6	---
95% C.I.	(29.1-35.4)	(30.5-38.5)	(23.0-37.0)	(15.6-27.5)	---
55-64	824	611	124	89	0
Rate*	89.9	98.3	82.6	59.3	---
95% C.I.	(83.8-96.1)	(90.5-106.1)	(68.1-97.1)	(47.0-71.6)	---
65-74	1,347	914	236	197	0
Rate*	209.7	211.3	230.2	192.2	---
95% C.I.	(198.5-220.9)	(197.6-225.0)	(200.8-259.6)	(165.3-219.0)	---
75-84	1,138	799	177	162	0
Rate*	324.0	342.1	306.1	280.1	---
95% C.I.	(305.1-342.8)	(318.4-365.8)	(261.0-351.2)	(237.0-323.3)	---
85+	318	192	80	46	0
Rate*	417.1	411.2	515.8	296.6	---
95% C.I.	(371.3-463.0)	(353.0-469.3)	(402.8-628.9)	(210.9-382.3)	---
Unknown	0	0	0	0	0

* Rates are per 100,000 age-specific population.

Note: The "----" is used for rates calculated on numbers less than ten. Caution should be used when comparing inpatient hospital discharge data to other data sources, since it is occurrence-based data. Please see Technical Notes for more information.

Table 118. Colorectal Cancer Inpatient Discharges by Age Group and Gender, Nevada Residents, 1997-2001

Age Group	Gender		
	Male	Female	Total
<1	0	0	0
Rate*	---	---	---
95% C.I.	---	---	---
1-4	0	0	0
Rate*	---	---	---
95% C.I.	---	---	---
5-14	0	1	1
Rate*	---	---	---
95% C.I.	---	---	---
15-24	0	2	2
Rate*	---	---	---
95% C.I.	---	---	---
25-34	13	18	31
Rate*	1.7	2.5	2.1
95% C.I.	(0.8-2.6)	(1.4-3.7)	(1.4-2.8)
35-44	58	63	121
Rate*	7.2	8.4	7.8
95% C.I.	(5.3-9.1)	(6.3-10.5)	(6.4-9.2)
45-54	227	187	414
Rate*	34.9	29.5	32.2
95% C.I.	(30.4-39.5)	(25.3-33.7)	(29.1-35.4)
55-64	474	350	824
Rate*	104.2	75.9	89.9
95% C.I.	(94.8-113.6)	(67.9-83.8)	(83.8-96.1)
65-74	751	596	1,347
Rate*	236.9	183.2	209.7
95% C.I.	(220.0-253.9)	(168.5-197.9)	(198.5-220.9)
75-84	536	602	1,138
Rate*	338.1	312.3	324.0
95% C.I.	(309.5-366.7)	(287.4-337.3)	(305.1-342.8)
85+	110	208	318
Rate*	444.5	404.0	417.1
95% C.I.	(361.4-527.6)	(349.1-458.9)	(371.3-463.0)
Unknown	0	0	0
Total	2,169	2,027	4,196
Rate*	43.8	42.3	43.1
95% C.I.	(42.0-45.7)	(40.5-44.2)	(41.8-44.4)

* Rates are per 100,000 age-specific population.

Note: The "----" is used for rates calculated on numbers less than ten. Caution should be used when comparing inpatient hospital discharge data to other data sources, since it is occurrence-based data. Please see Technical Notes for more information.

Table 119. Colorectal Cancer Inpatient Discharges by County/Region of Residence, Nevada Residents, 1997-2001

County of Residence	1997-2001 Inpatient Hospital Discharges				
	Number	Rate*		Age-Adjusted Rate**	
		Rate	95% C.I.	Rate	95% C.I.
Carson City	88	35.3	(27.9-42.7)	30.3	(24.2-37.5)
Churchill	51	42.3	(30.7-53.9)	45.4	(33.7-60.3)
Clark	2,928	44.0	(42.4-45.5)	50.7	(48.8-52.7)
Douglas	71	34.6	(26.6-42.7)	29.8	(23.1-38.4)
Elko	50	21.6	(15.6-27.6)	46.4	(33.4-63.1)
Esmeralda	1	---	---	---	---
Eureka	1	---	---	---	---
Humboldt	18	21.4	(11.5-31.3)	31.0	(18.1-51.2)
Lander	10	32.0	(12.2-51.8)	32.7	(15.4-68.2)
Lincoln	4	---	---	---	---
Lyon	120	70.6	(57.9-83.2)	64.7	(53.4-78.1)
Mineral	26	98.5	(60.7-136.4)	76.1	(49.1-117.3)
Nye	93	59.2	(47.1-71.2)	41.1	(32.8-51.7)
Pershing	9	---	---	---	---
Storey	2	---	---	---	---
Washoe	706	42.1	(39.0-45.2)	49.2	(45.6-53.1)
White Pine	18	42.8	(23.1-62.6)	36.7	(21.7-60.4)
Unknown	0	---	---	---	---
Total	4,196	43.1	(41.8-44.4)	48.6	(47.1-50.2)

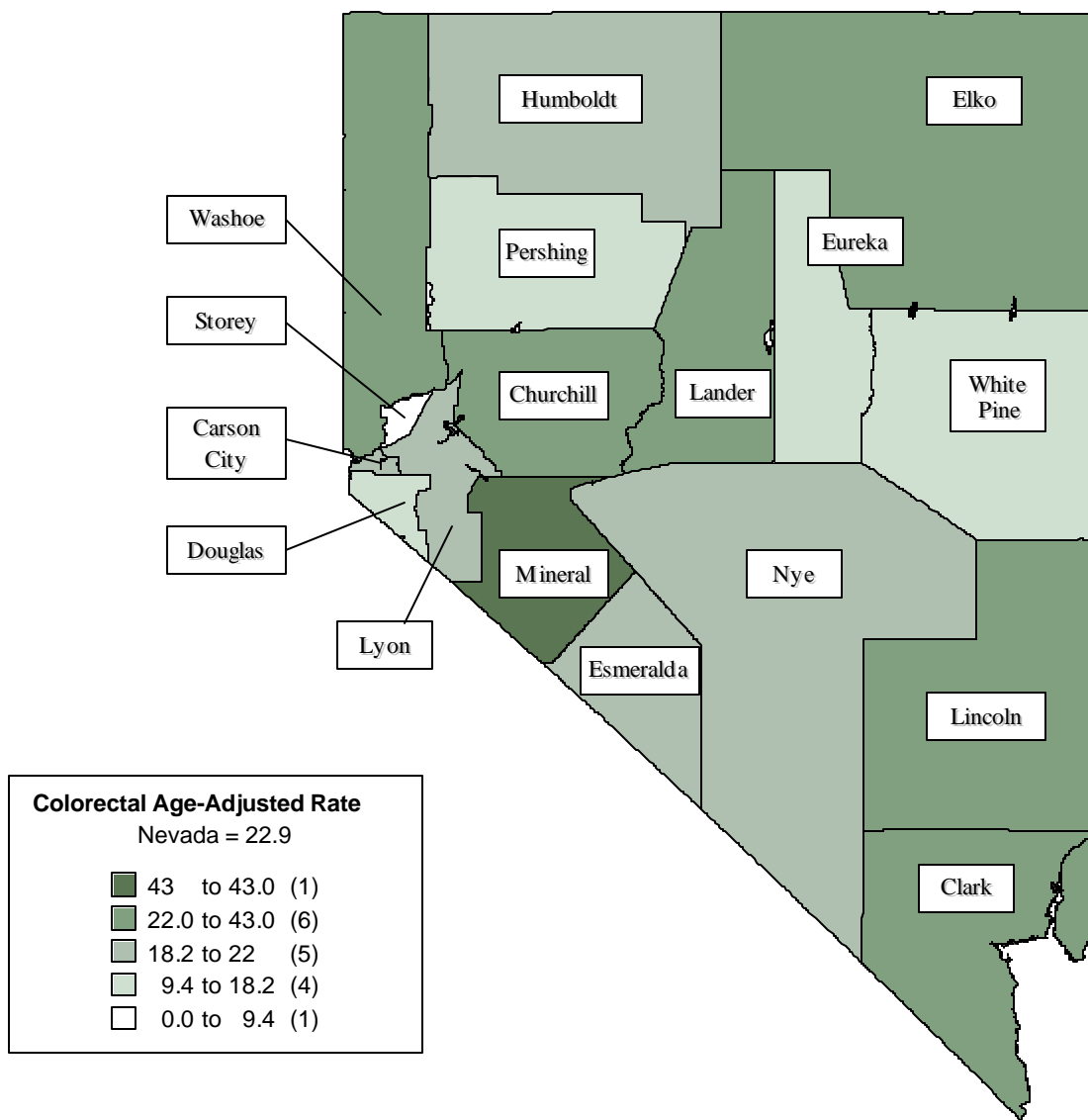
Note: The "----" is used for rates calculated on numbers less than ten. *Rates are per 100,000 population. **Rates are per 100,000 population and are age-adjusted to the 2001 US Standard population.

Table 120. Colorectal Cancer Inpatient Discharges by Age Group, Charges and Length of Stay, Nevada Residents, 1997-2001

Age Group	Discharges	Charges (\$)			Length of Stay (Days)		
		Total	Average	Median	Total	Average	Median
<1	0	---	---	---	---	---	---
1-4	0	---	---	---	---	---	---
5-14	1	---	---	---	---	---	---
15-24	2	---	---	---	---	---	---
25-34	31	1,048,962	33,837	21,826	280	9.0	6.0
35-44	121	3,756,150	31,043	27,498	947	7.8	7.0
45-54	414	13,627,471	32,917	25,617	3,384	8.2	7.0
55-64	824	27,131,697	32,927	26,750	6,558	8.0	7.0
65-74	1,347	44,529,624	33,058	25,389	10,592	7.9	7.0
75-84	1,138	42,906,514	37,703	27,321	10,399	9.1	7.0
85+	318	12,075,184	37,972	28,894	3,137	9.9	8.0
Unknown	0	---	---	---	---	---	---
Total	4,196	349,189	4,034	33,381	68	4,034.0	8.6

MORTALITY

Figure 83. Colorectal Cancer Age-Adjusted (2001) Mortality Rates, Nevada Residents, 1997-2001



Note: Rates are per 100,000 population and age-adjusted to 2001 US Standard population. Caution should be used when interpreting rates based upon small numbers. See Technical notes for more information.

Figure 84. Colorectal Cancer Age-Adjusted Mortality Rates by County/Region of Residence, Nevada Residents, 1997-2001

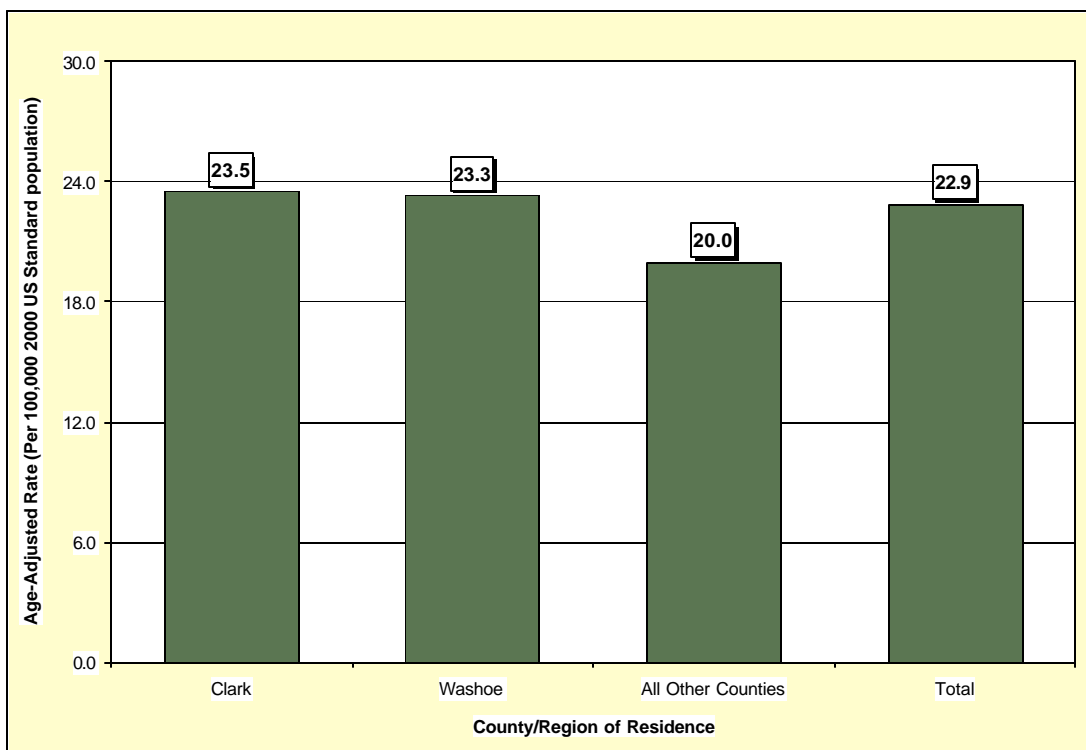


Figure 85. Colorectal Cancer Age-Adjusted Mortality Rates by Race/Ethnicity, Nevada Residents, 1997-2001

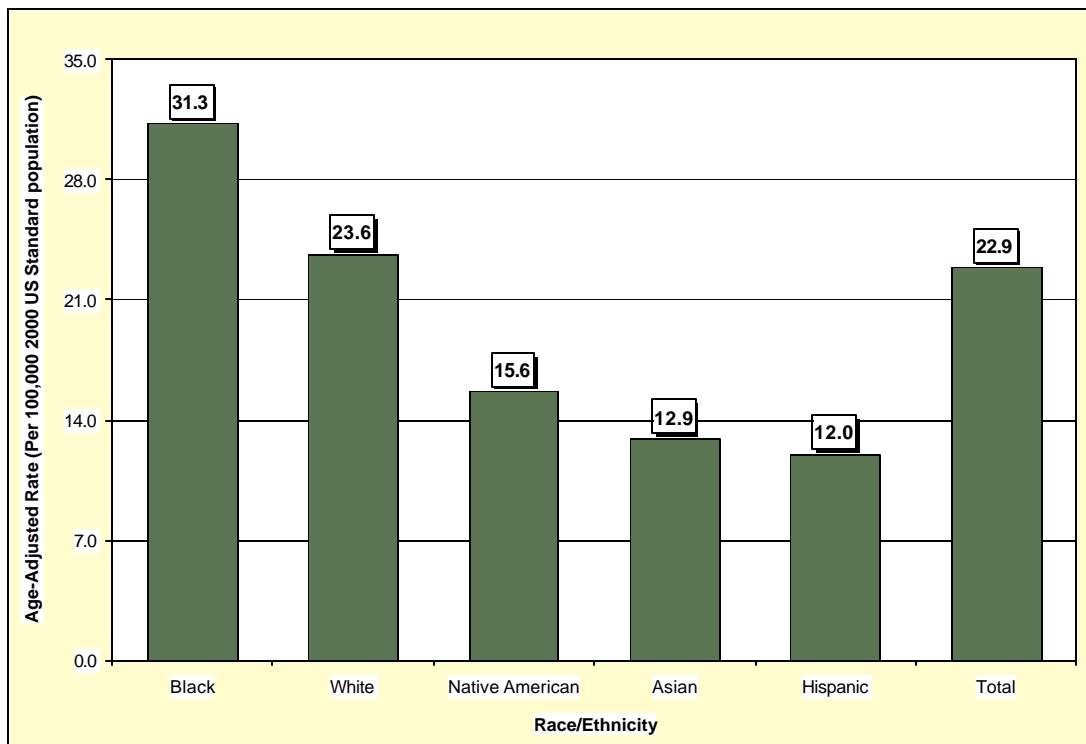


Table 121. Colorectal Cancer Mortality by Gender, Race/Ethnicity and County/Region of Residence, Nevada Residents, 1997-2001

Category	County/Region of Residence			
	Nevada Total	Clark	Washoe	All Other Counties
Total				
Mortality	1,891	1,291	328	272
Rate*	22.9	23.5	23.3	20.0
95% C.I.	(21.8-24.0)	(22.2-24.9)	(20.8-26.1)	(17.6-22.6)
Gender				
Male	1,055	719	198	138
Rate*	27.3	28.1	31.2	20.6
95% C.I.	(25.5-29.2)	(25.9-30.6)	(26.8-36.4)	(17.2-24.7)
Female	836	572	130	134
Rate*	19.1	19.7	17.0	18.8
95% C.I.	(17.8-20.4)	(18.1-21.4)	(14.2-20.2)	(15.7-22.3)
Other/Unknown	0	0	0	0
Race/Ethnicity				
White	1,650	1,093	300	257
Rate*	23.6	24.5	24.1	20.4
95% C.I.	(22.5-24.8)	(23.0-26.0)	(21.4-27.0)	(17.9-23.2)
Black	120	115	4	1
Rate*	31.3	32.7	---	---
95% C.I.	(25.5-38.4)	(26.5-40.4)	---	---
Native American	13	4	6	3
Rate*	15.6	---	---	---
95% C.I.	(8.0-28.6)	---	---	---
Asian	45	33	10	2
Rate*	12.9	10.7	22.2	---
95% C.I.	(8.8-19.9)	(7.2-18.2)	(8.4-55.0)	---
Hispanic	62	45	8	9
Rate*	12.0	11.2	---	---
95% C.I.	(8.8-16.4)	(7.6-16.5)	---	---
Other/Unknown	1	1	0	0

Note: The "----" is used for rates calculated on numbers less than ten.

*Rates are per 100,000 population and are age-adjusted to the 2001 US Standard population.

Table 122. Colorectal Cancer Mortality by Age Group and County/Region of Residence, Nevada Residents, 1997-2001

Category	County/Region of Residence			
	Nevada Total	Clark	Washoe	All Other Counties
Total				
Mortality	1,891	1,291	328	272
Rate*	19.4	19.4	19.5	19.5
95% C.I.	(18.5-20.3)	(18.3-20.4)	(17.4-21.7)	(17.2-21.8)
Age Group				
<1	0	0	0	0
Rate*	---	---	---	---
95% C.I.	---	---	---	---
1-4	0	0	0	0
Rate*	---	---	---	---
95% C.I.	---	---	---	---
5-14	0	0	0	0
Rate*	---	---	---	---
95% C.I.	---	---	---	---
15-24	1	0	1	0
Rate*	---	---	---	---
95% C.I.	---	---	---	---
25-34	9	8	0	1
Rate*	---	---	---	---
95% C.I.	---	---	---	---
35-44	52	37	13	2
Rate*	3.3	3.5	4.6	---
95% C.I.	(2.4-4.2)	(2.4-4.7)	(2.1-7.1)	---
45-54	128	97	20	11
Rate*	10.0	11.5	8.5	5.5
95% C.I.	(8.2-11.7)	(9.2-13.7)	(4.8-12.2)	(2.2-8.7)
55-64	320	223	56	41
Rate*	34.9	35.9	37.3	28.4
95% C.I.	(31.1-38.8)	(31.2-40.6)	(27.5-47.1)	(19.7-37.1)
65-74	598	410	103	85
Rate*	93.1	94.8	100.5	79.3
95% C.I.	(85.6-100.6)	(85.6-104.0)	(81.1-119.9)	(62.4-96.1)
75-84	557	375	90	92
Rate*	158.6	160.6	155.6	153.6
95% C.I.	(145.4-171.7)	(144.3-176.8)	(123.5-187.8)	(122.2-185.0)
85+	226	141	45	40
Rate*	296.4	302.0	290.2	285.1
95% C.I.	(257.8-335.1)	(252.1-351.8)	(205.4-374.9)	(196.7-373.4)
Unknown	0	0	0	0

Note: The "—" is used for rates calculated on numbers less than ten.

* Rates are per 100,000 age-specific population.

Table 123. Colorectal Cancer Mortality by County of Residence, Nevada Residents, 1997-2001

County of Residence	1997-2001 Mortality				
	Cases	Rate*		Age-Adjusted Rate**	
		Rate	95% C.I.	Rate	95% C.I.
Carson City	57	22.9	(16.9-28.8)	19.8	(14.9-25.8)
Churchill	25	20.7	(12.6-28.9)	22.8	(14.7-34.2)
Clark	1,291	19.4	(18.3-20.4)	23.5	(22.2-24.9)
Douglas	32	15.6	(10.2-21.0)	14.2	(9.5-21.0)
Elko	27	11.7	(7.3-16.1)	28.7	(18.4-43.0)
Esmeralda	1	---	---	---	---
Eureka	1	---	---	---	---
Humboldt	10	11.9	(4.5-19.3)	19.9	(9.2-38.4)
Lander	7	---	---	---	---
Lincoln	6	---	---	---	---
Lyon	35	20.6	(13.8-27.4)	19.4	(13.3-27.6)
Mineral	14	53.1	(25.3-80.8)	43.0	(23.2-77.9)
Nye	46	29.3	(20.8-37.7)	20.6	(14.8-28.8)
Pershing	3	---	---	---	---
Storey	0	---	---	---	---
Washoe	328	19.5	(17.4-21.7)	23.3	(20.8-26.1)
White Pine	8	---	---	---	---
Unknown	0	---	---	---	---
Total	1,891	19.4	(18.5-20.3)	22.9	(21.8-24.0)

Note: The "----" is used for rates calculated on numbers less than ten. *Rates are per 100,000 population. **Rates are per 100,000 population and are age-adjusted to the 2001 US Standard population.

Table 124. Colorectal Cancer Mortality by Race/Ethnicity and Gender, Nevada Residents, 1997-2001

Race/Ethnicity		Gender		
		Male	Female	Total
White	Mortality	917	733	1,650
	Rate*	27.9	19.8	23.6
	95% C.I.	(26.0-30.0)	(18.4-21.4)	(22.5-24.8)
Black	Mortality	70	50	120
	Rate*	41.0	23.7	31.3
	95% C.I.	(30.4-55.8)	(17.3-32.1)	(25.5-38.4)
Native American	Mortality	7	6	13
	Rate*	---	---	15.6
	95% C.I.	---	---	(8.0-28.6)
Asian	Mortality	25	20	45
	Rate*	16.6	10.2	12.9
	95% C.I.	(10.4-29.8)	(5.1-21.2)	(8.8-19.9)
Hispanic	Mortality	36	26	62
	Rate*	14.8	9.6	12.0
	95% C.I.	(9.4-23.8)	(5.9-15.2)	(8.8-16.4)
Other/Unknown		0	1	1
Total	Mortality	1,055	836	1,891
	Rate*	27.3	19.1	22.9
	95% C.I.	(25.5-29.2)	(17.8-20.4)	(21.8-24.0)

Note: The "----" is used for rates calculated on numbers less than ten. *Rates are per 100,000 population and are age-adjusted to the 2001 US Standard population.

Table 125. Colorectal Cancer Mortality by Age Group and Gender, Nevada Residents, 1997-2001

Age Group	Gender		
	Male	Female	Total
<1	0	0	0
Rate*	---	---	---
95% C.I.	---	---	---
1-4	0	0	0
Rate*	---	---	---
95% C.I.	---	---	---
5-14	0	0	0
Rate*	---	---	---
95% C.I.	---	---	---
15-24	0	1	1
Rate*	---	---	---
95% C.I.	---	---	---
25-34	2	7	9
Rate*	---	---	---
95% C.I.	---	---	---
35-44	29	23	52
Rate*	3.6	3.1	3.3
95% C.I.	(2.3-4.9)	(1.8-4.3)	(2.4-4.2)
45-54	72	56	128
Rate*	11.1	8.8	10.0
95% C.I.	(8.5-13.6)	(6.5-11.2)	(8.2-11.7)
55-64	205	115	320
Rate*	45.1	24.9	34.9
95% C.I.	(38.9-51.2)	(20.4-29.5)	(31.1-38.8)
65-74	368	230	598
Rate*	116.1	70.7	93.1
95% C.I.	(104.2-128.0)	(61.6-79.8)	(85.6-100.6)
75-84	296	261	557
Rate*	186.7	135.4	158.6
95% C.I.	(165.4-208.0)	(119.0-151.8)	(145.4-171.7)
85+	83	143	226
Rate*	335.4	277.7	296.4
95% C.I.	(263.2-407.6)	(232.2-323.2)	(257.8-335.1)
Unknown	0	0	0
Total	1,055	836	1,891
Rate*	21.3	17.5	19.4
95% C.I.	(20.0-22.6)	(16.3-18.6)	(18.5-20.3)

Note: The "—" is used for rates calculated on numbers less than ten.

* Rates are per 100,000 age-specific population.

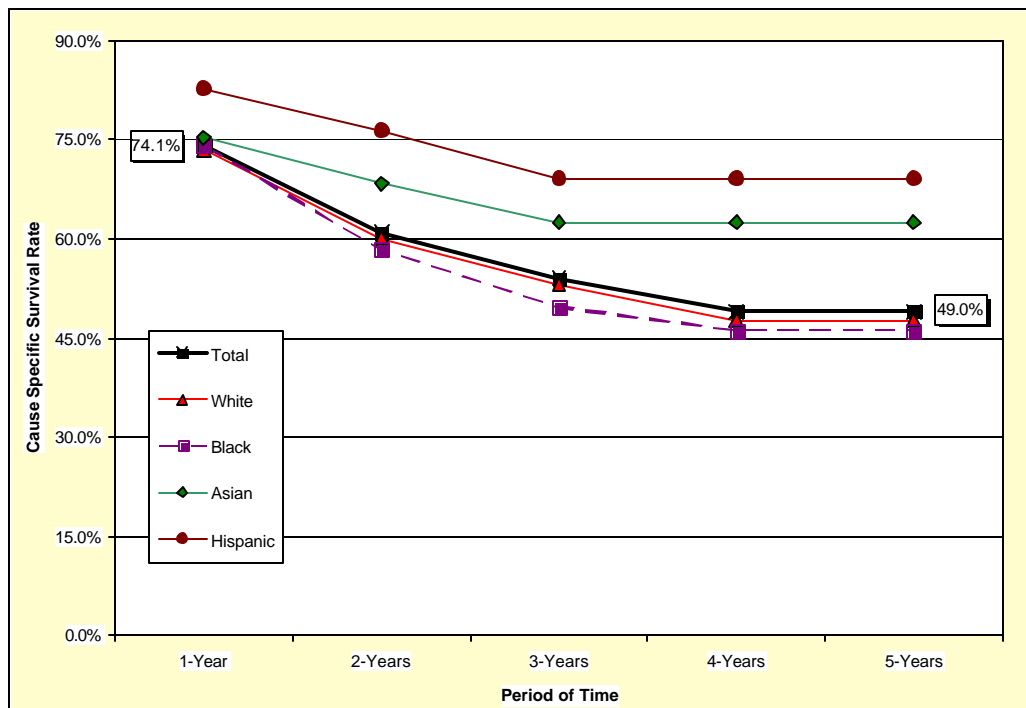
Table 126. Median Age at Death from Colorectal Cancer by Race/Ethnicity and Gender, Nevada Residents, 1997-2001

Race/Ethnicity	Gender					
	Male		Female		Total	
	Deaths	Median Age	Deaths	Median Age	Deaths	Median Age
White	917	71.0	733	75.0	1,650	72.0
Black	70	66.5	50	68.0	120	67.0
Native American	7	56.0	6	75.0	13	68.0
Asian	25	69.0	20	59.5	45	66.0
Hispanic	36	66.5	26	70.0	62	69.0
Other/Unknown	0	---	1	---	1	---
Total	1,055	70.0	836	74.0	1,891	72.0

Note: Those cases of other/unknown gender and/or unknown ages are not included in this table. The median age was not calculated for those numbers less than five.

SURVIVAL RATE

Figure 86. Survival Rates for Colorectal Cancer by Race/Ethnicity, Nevada Residents, 1997-2001



Notes: The survival rate for those racial/ethnic groups not included in this chart could not be calculated due to small cell size.

Figure 87. Survival Rates for Colorectal Cancer by Stage of Cancer at Diagnosis, Nevada Residents, 1997-2001

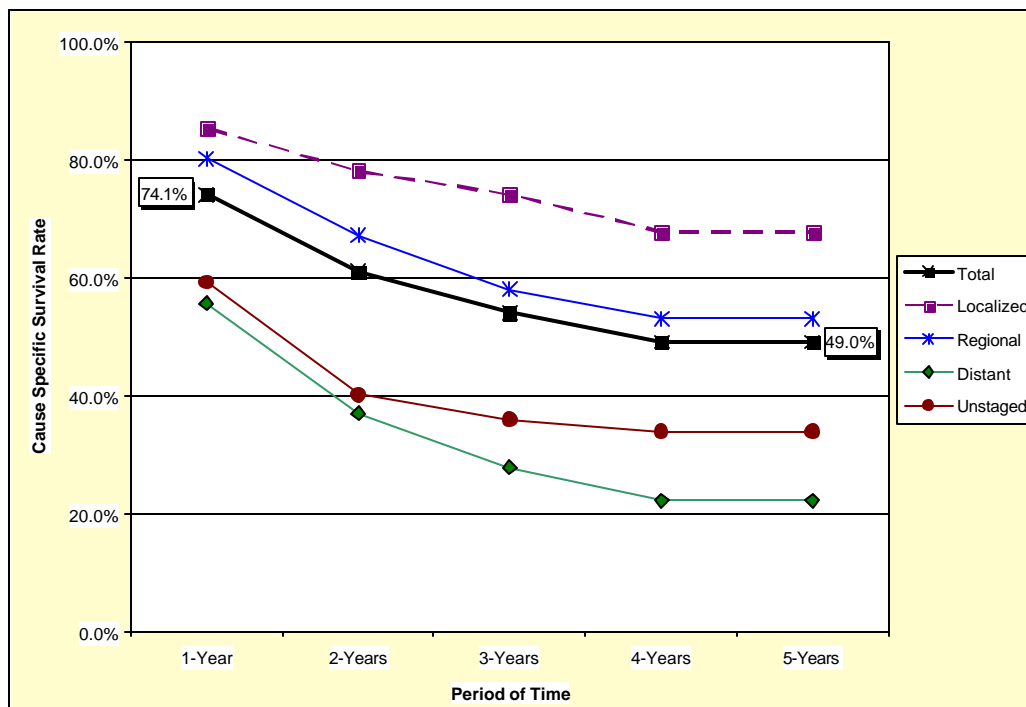


Table 127. Cause-Specific Survival Rates for Colorectal Cancer by Race/Ethnicity and Gender, Nevada Residents, 1997-2001

Race/ Ethnicity and Gender	Number of Cases	Cause Specific Survival Rate					Median Survival Time (years)
		One Year	Two Years	Three Years	Four Years	Five Years	
Total	3,404	74.1%	61.0%	54.0%	49.0%	49.0%	3.81
Male	1,820	73.2%	59.2%	51.8%	48.1%	48.1%	3.49
Female	1,584	75.2%	63.0%	56.7%	50.3%	50.3%	>5 years
Race/Ethnicity							
White	3,004	73.6%	60.0%	53.0%	47.6%	47.6%	3.56
Male	1,609	72.6%	57.9%	50.8%	46.9%	46.9%	3.20
Female	1,395	74.7%	62.6%	55.9%	48.5%	48.5%	3.80
Black	180	74.0%	58.3%	49.7%	46.1%	46.1%	2.96
Male	91	74.5%	62.6%	46.2%	36.0%	36.0%	2.77
Female	89	73.6%	54.9%	51.4%	51.4%	51.4%	>5 years
Native American	10	---	---	---	---	---	---
Male	6	---	---	---	---	---	---
Female	4	---	---	---	---	---	---
Asian	85	75.4%	68.4%	62.4%	62.4%	62.4%	>5 years
Male	46	---	---	---	---	---	---
Female	39	---	---	---	---	---	---
Hispanic	99	82.7%	76.4%	69.1%	69.1%	69.1%	>5 years
Male	57	82.8%	75.3%	68.4%	68.4%	68.4%	>5 years
Female	42	---	---	---	---	---	---

Notes: 1) The “---” indicates that survival rate could not be calculated due to small cell size. Caution should be used when interpreting survival rates based upon categories with a small number of cases. 2) Those cases where the gender and/or race/ethnicity were other/unknown, are not shown separately, but are included in the category totals. 3) These rates may not be directly comparable to National rates because of different methodologies. Caution should be used when trying to compare rates for Nevada and the Nation. For more information on the calculation of survival rates, please refer to Technical Notes section.

Table 128. Cause-Specific Survival Rates for Colorectal Cancer by Stage of Cancer at Diagnosis and Gender, Nevada Residents, 1997-2001

Survival Rate of Stage at Diagnosis		Gender		
		Total	Male	Female
Total	Cases	3,404	1,820	1,584
	One Year	74.1%	73.2%	75.2%
	5 Years	49.0%	48.1%	50.3%
	Median Survival	3.81	3.49	>5 years
Stage at Diagnosis				
In situ	Cases	0	0	0
	One Year	---	---	---
	5 Years	---	---	---
	Median Survival	---	---	---
Localized	Cases	1,063	566	497
	One Year	85.3%	84.8%	85.8%
	5 Years	67.8%	69.3%	65.9%
	Median Survival	>5 years	>5 years	>5 years
Regional	Cases	1,274	658	616
	One Year	80.1%	80.6%	79.6%
	5 Years	53.0%	52.3%	54.1%
	Median Survival	>5 years	>5 years	>5 years
Distant	Cases	650	371	279
	One Year	55.6%	53.9%	57.8%
	5 Years	22.2%	21.3%	22.8%
	Median Survival	1.30	1.21	1.43
Unstaged	Cases	417	225	192
	One Year	59.2%	56.8%	62.2%
	5 Years	33.9%	30.0%	39.2%
	Median Survival	1.48	1.30	1.88

Notes: 1) The “---” indicates that survival rate could not be calculated due to small cell size. Caution should be used when interpreting survival rates based upon categories with a small number of cases. 2) These rates may not be directly comparable to National rates because of different methodologies. Caution should be used when trying to compare rates for Nevada and the Nation. For more information on the calculation of survival rates, please refer to Technical Notes section.